



SUPERIOR
Black Lick, Pa.
Mercer, Pa.
Wooster, Oh.
Cleveland, Ok.
Trinidad, Co.

SINGLE INDUCTION LOG

Company	Pioneer Natural Resources	Company	Pioneer Natural Resources
Well	Lorencito 12-5-34-66	Well	Lorencito 12-5-34-66
Field	Purgatorie River	Field	Purgatorie River
County	Las Animas	County	Las Animas
State	CO	State	CO
Location:	API # : 05-071-09434-00 2623' FSL & 273' FWL	Other Services	CDL
Permanent Datum	SEC 5 TWP 34s RGE 66W	Elevation	
Log Measured From	Ground level	K.B. 7353	
Drilling Measured From	Kelly Bushing 9' A. G. L. Kelly Bushing	D.F. -----	
		G.L. 7344'	
Date	1-19-08	1-19-08	
Run Number	One	Three	
Depth Driller	2015'	2015'	
Depth Logger	1504'	2020'	
Bottom Logged Interval	1502'	2018'	
Top Log Interval	Surface Casing	5.5" Casing	
Casing Driller	8.625@261'	5.5" @ 1526'	
Casing Logger	261'	1528'	
Bit Size	7 7/8"	7 7/8"	
Type Fluid in Hole	Water	Water	
Density / Viscosity	///	///	
pH / Fluid Loss	///	///	
Source of Sample	///	///	
Rm @ Meas. Temp	///	///	
Rmf @ Meas. Temp	///	///	
Rmc @ Meas. Temp	///	///	
Source of Rmf / Rmc	///	///	
Rm @ BHT	///	///	
Time Circulation Stopped	4:30 AM	4:30 A.M.	
Time Logger on Bottom	7:30 AM	3:15 P.M.	
Maximum Recorded Temperature	85 DEG F	112 DEG F	
Equipment Number	T0700	T0701	
Location	Trinidad	Trinidad	
Recorded By	Karl Lucero	C. Sinerios	
Witnessed By	Mr. Neal Hawthorne	Mr. Neal Hawthorne	

>>> Fold Here >>>

All interpretations are opinions based on inferences from electrical or other measurements and we cannot and do not guarantee the accuracy or correctness of any interpretation, and we shall not, except in the case of gross or willful negligence on our part, be liable or responsible for any loss, costs, damages, or expenses incurred or sustained by anyone resulting from any interpretation made by any of our officers, agents or employees. These interpretations are also subject to our general terms and conditions set out in our current Price Schedule.

Comments

Multiple passes ran thru 5.5" casing.
Merged all data.
Well Directions:
Lorencito, 1st right turn up hill, second drive through location.



SUPERIOR

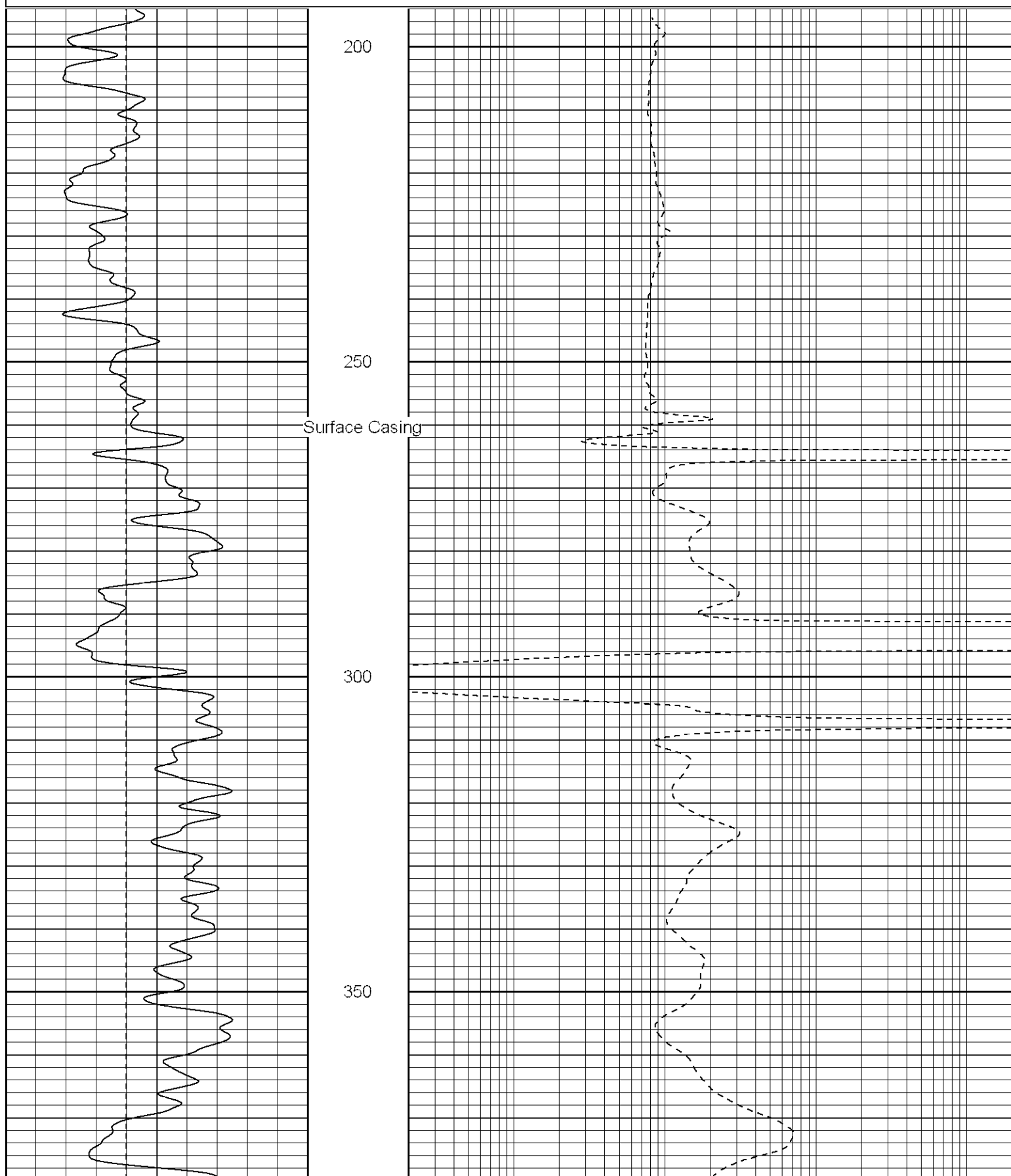
Black Lick, Pa.
Mercer, Pa.
Wooster, Oh.
Cleveland, Ok.
Trinidad, Co.

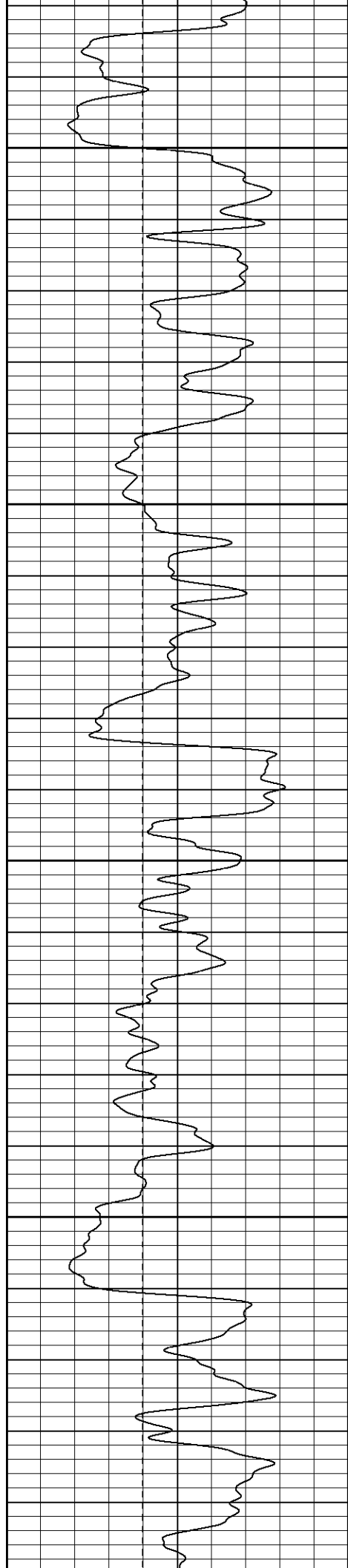
Main Pass

Database File: lorencito12-5-34-66.db
Dataset Pathname: pass1sil
Presentation Format: iel
Dataset Creation: Mon Jan 21 16:15:45 2008
Charted by: Depth in Feet scaled 1:240

0	GR (GAPI)	200
-80	SP (mV)	120

0.2	DIR (Ohm-m)	2000
0.2	SN (Ohm-m)	2000





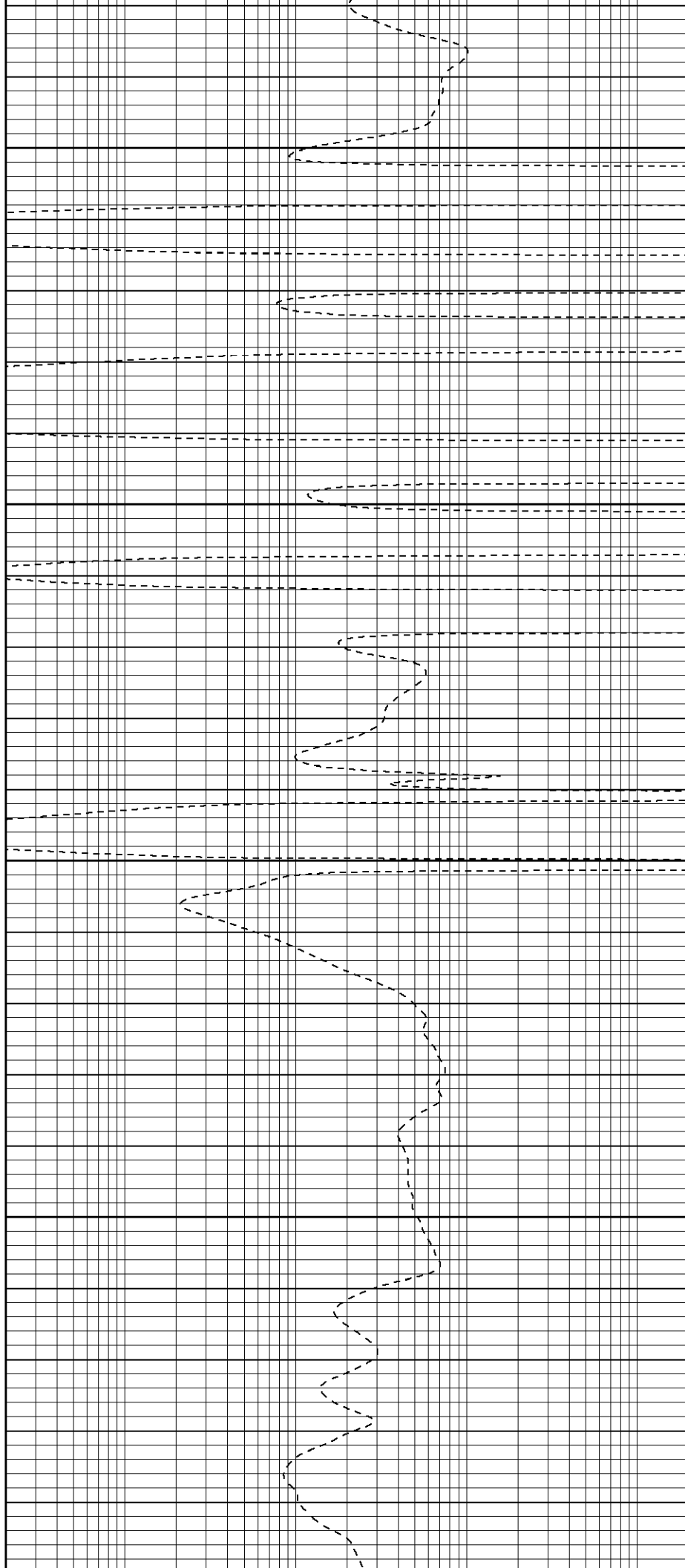
400

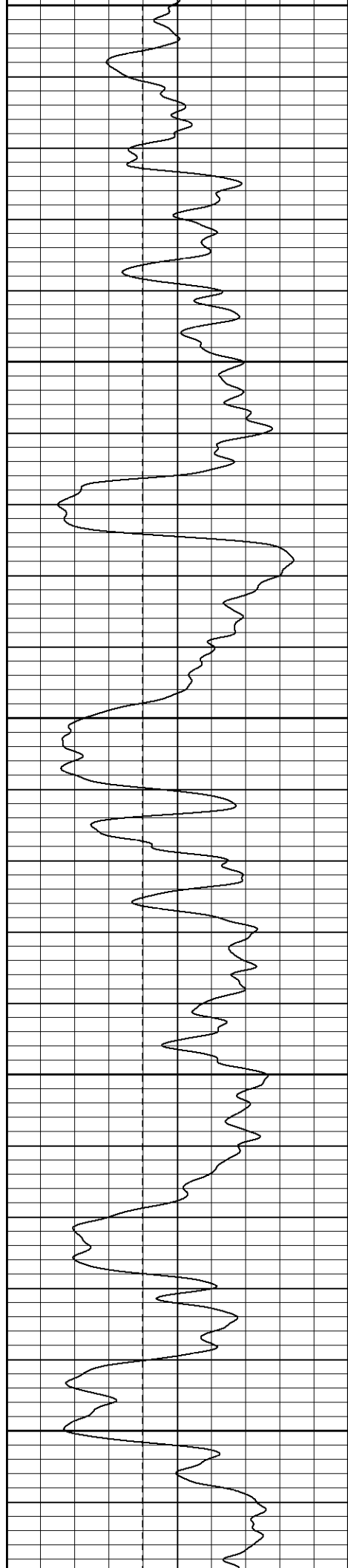
450

500

550

600





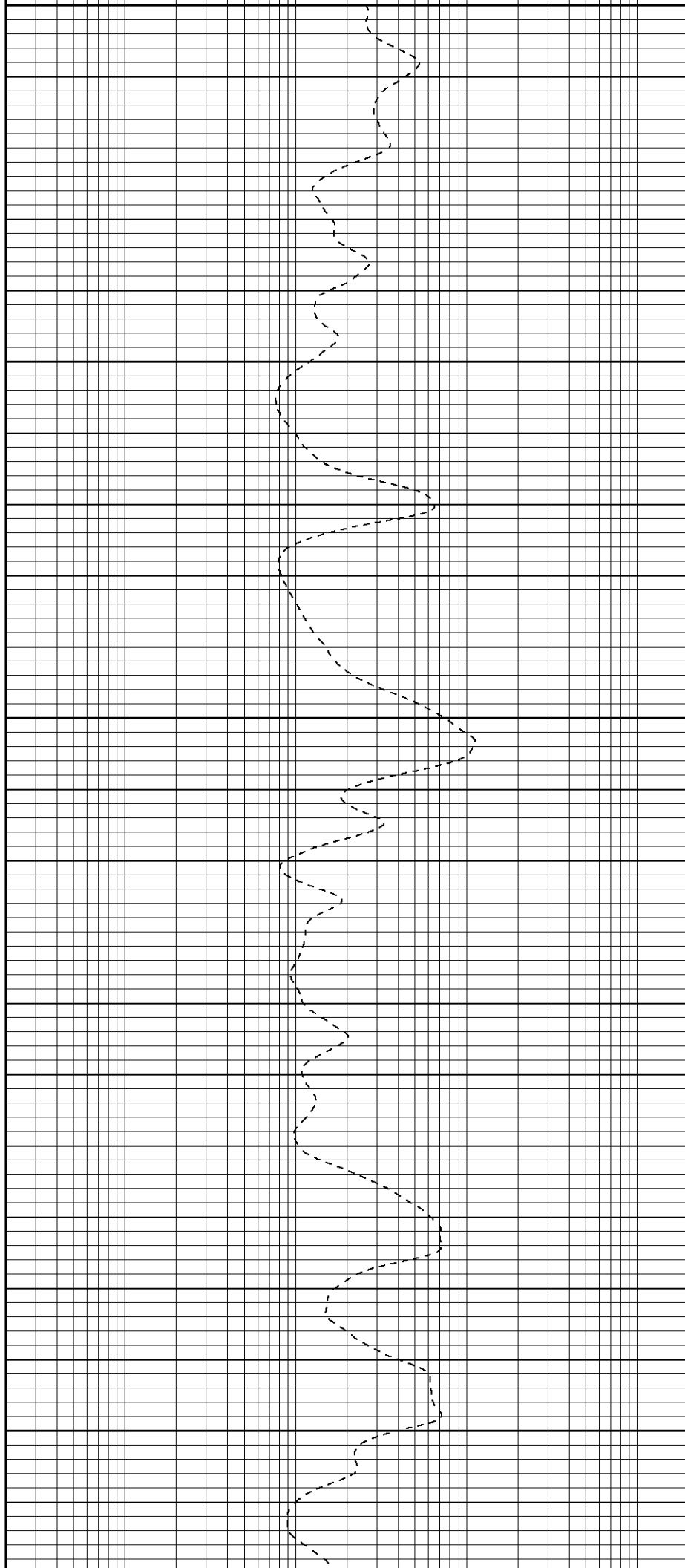
600

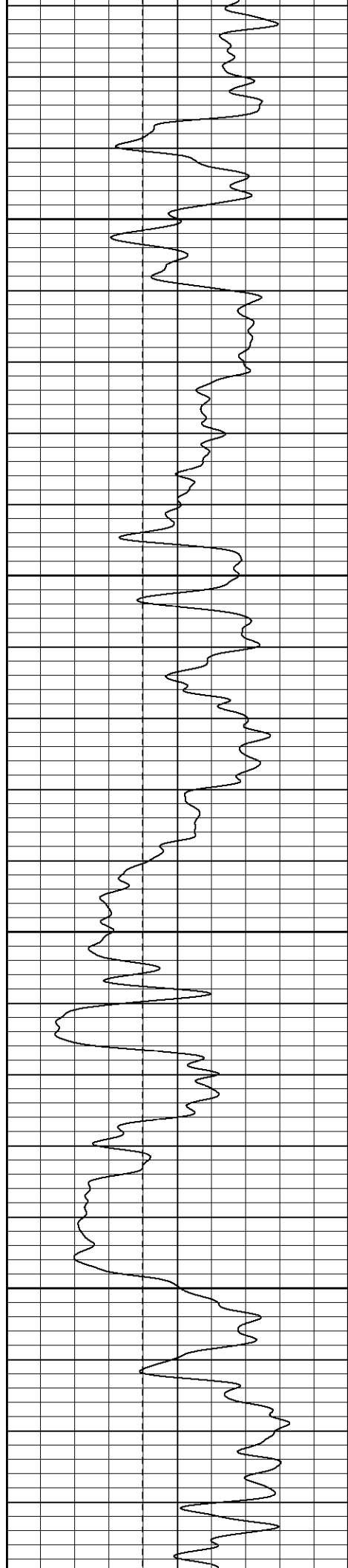
650

700

750

800



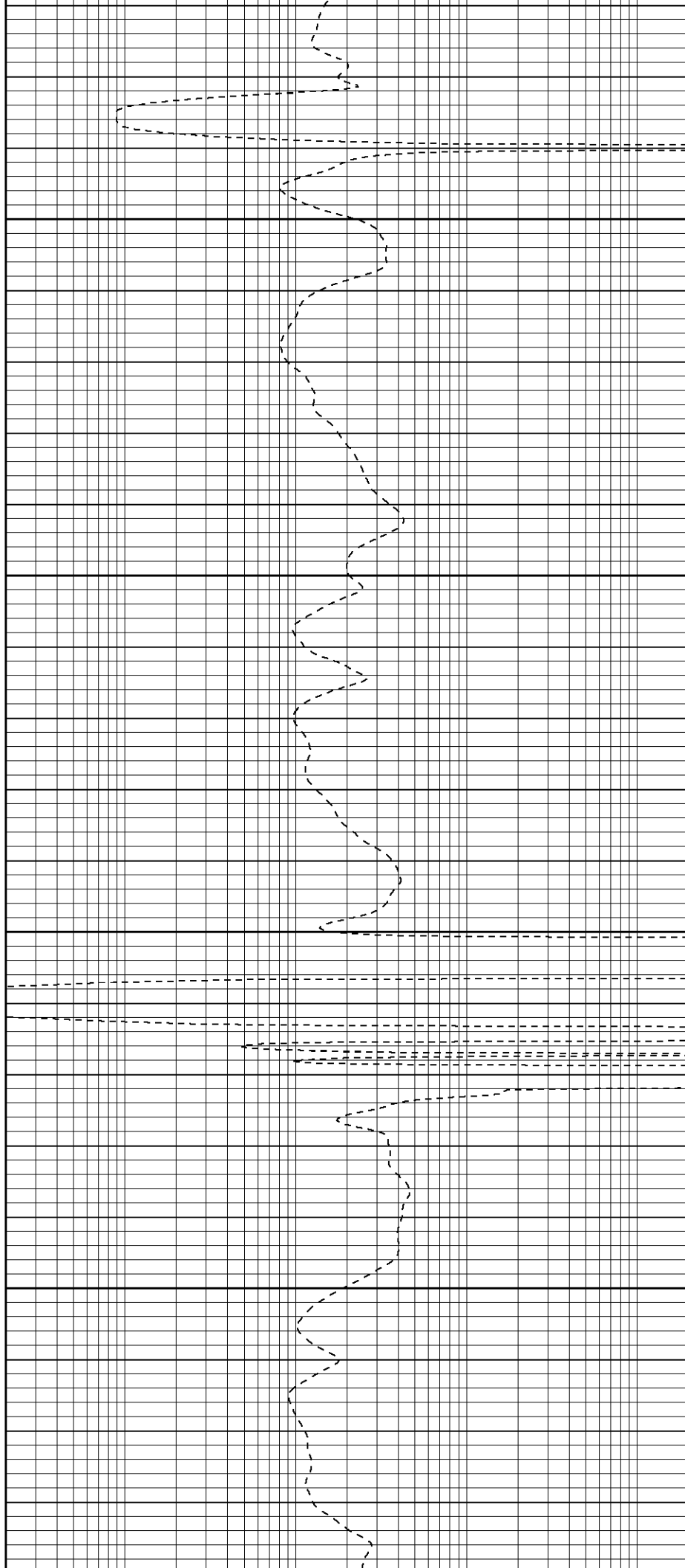


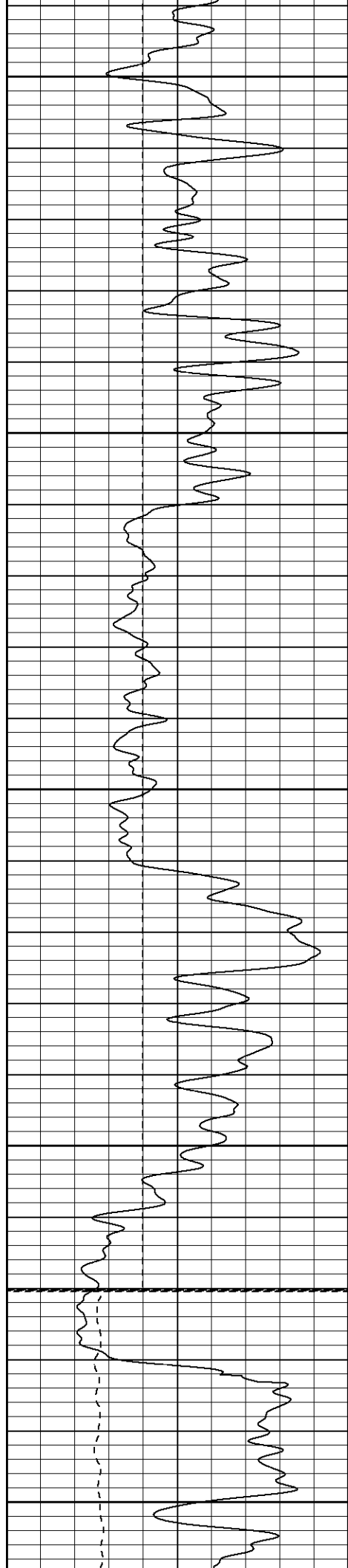
850

900

950

1000





1050

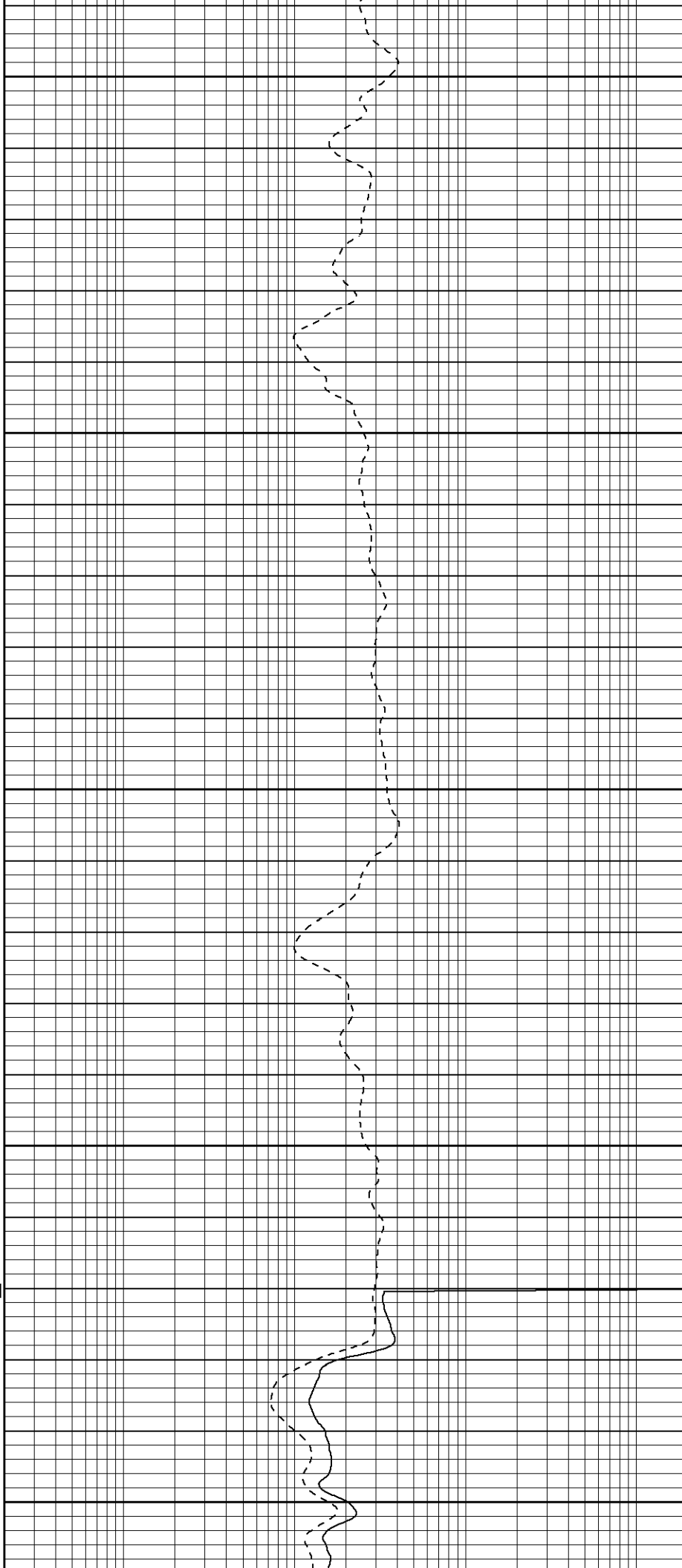
1100

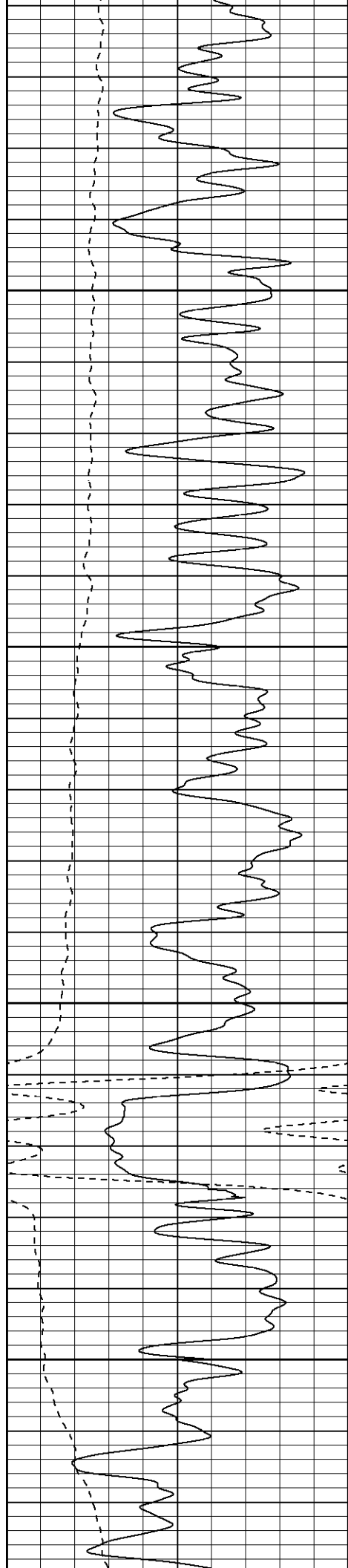
1150

1200

Fluid Level

1250



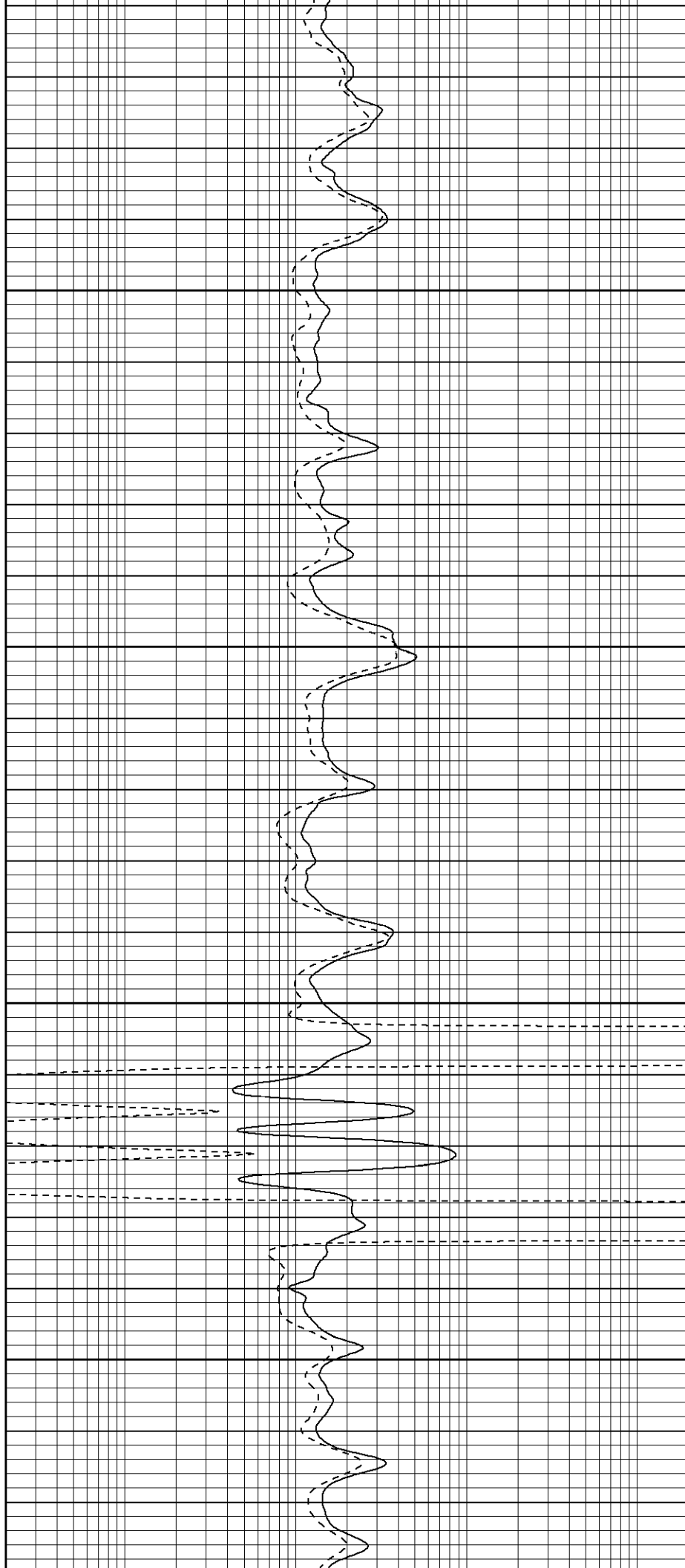


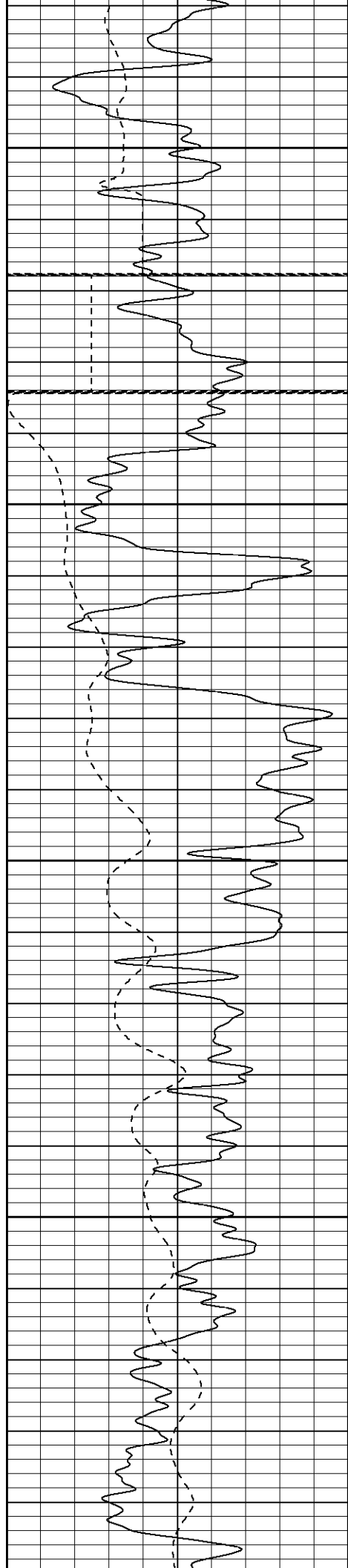
1300

1350

1400

1450





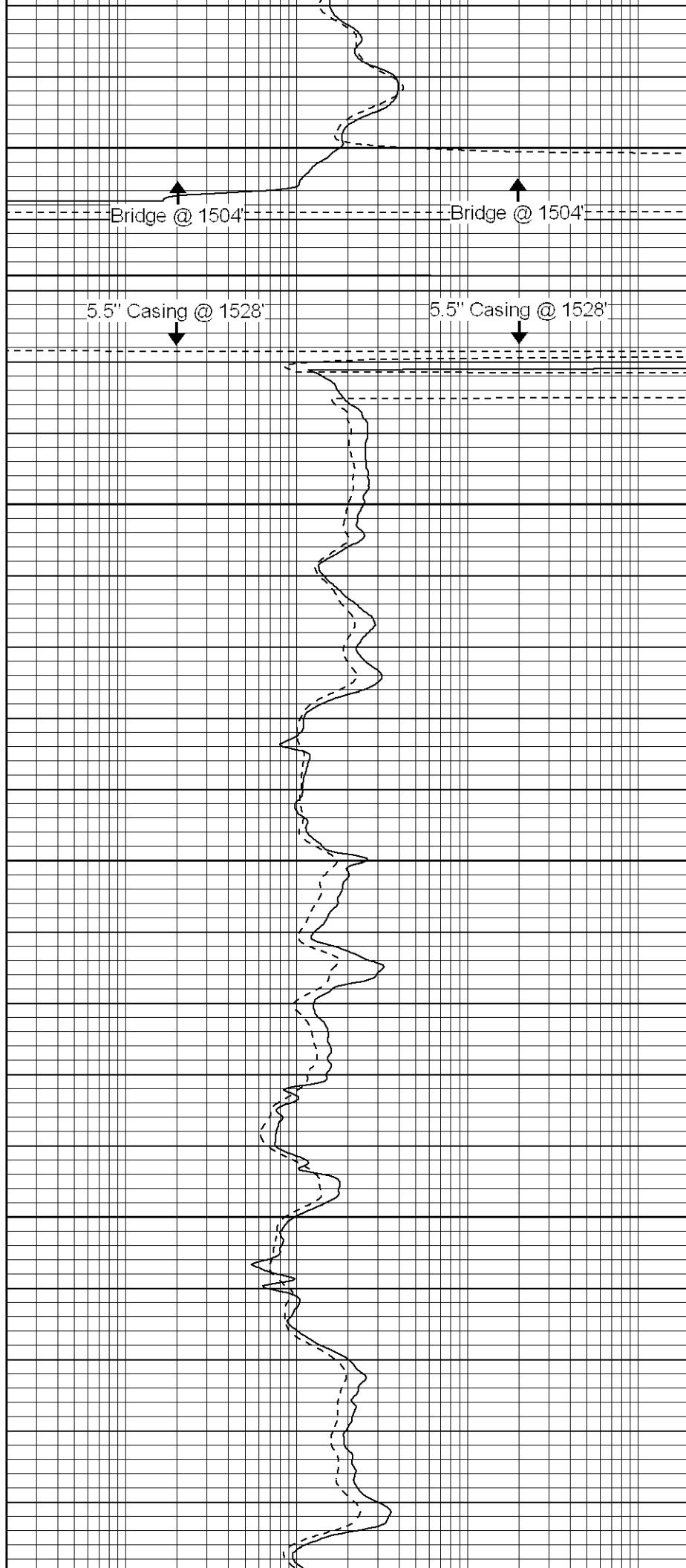
1500

1550

1600

1650

1700

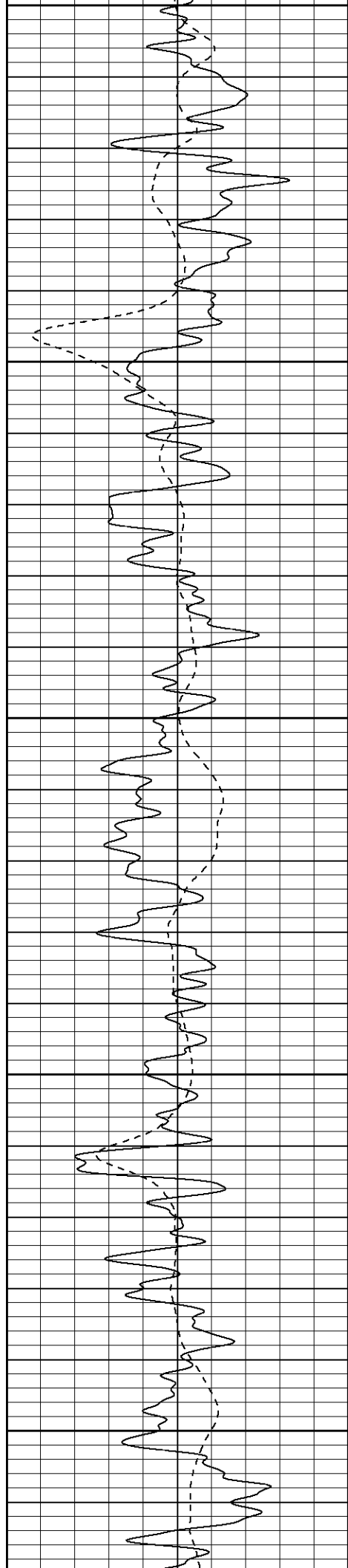


Bridge @ 1504'

Bridge @ 1504'

5.5" Casing @ 1528'

5.5" Casing @ 1528'



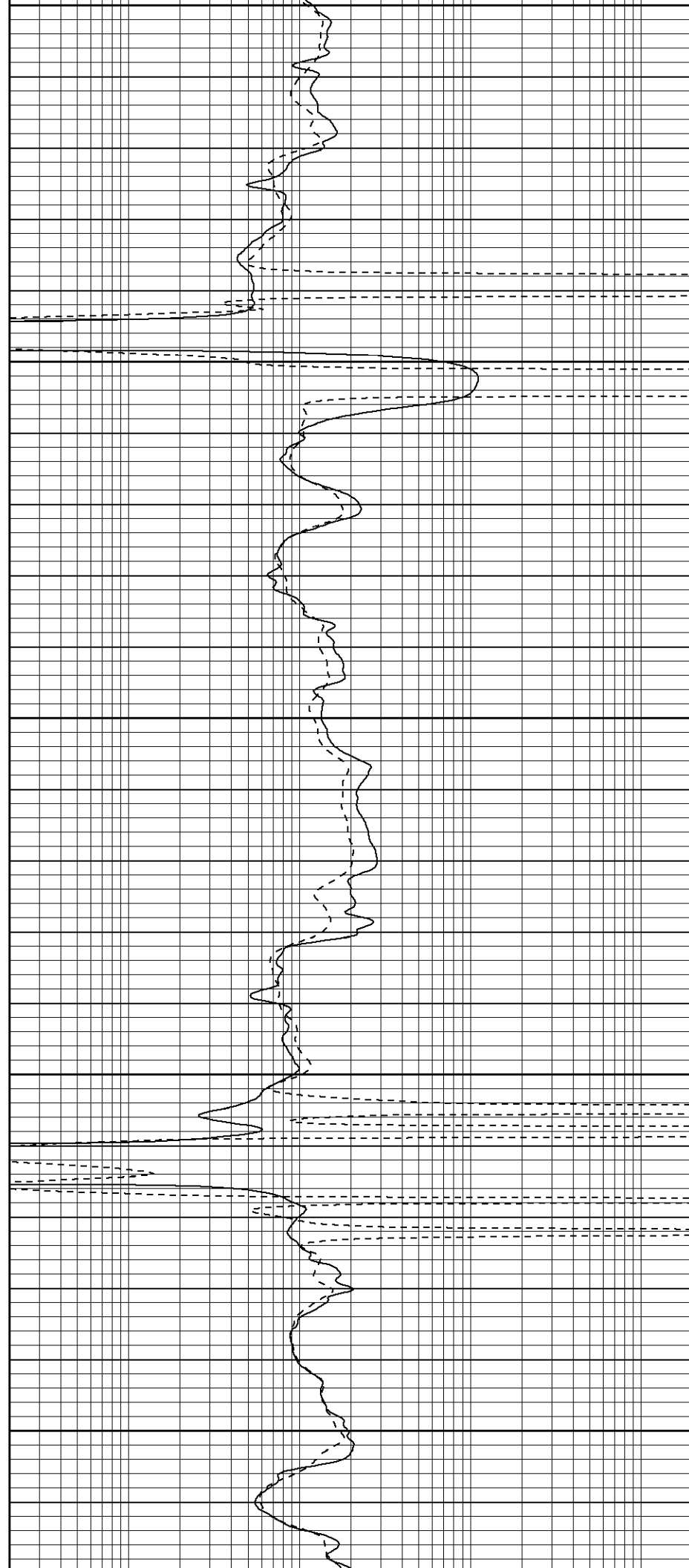
1700

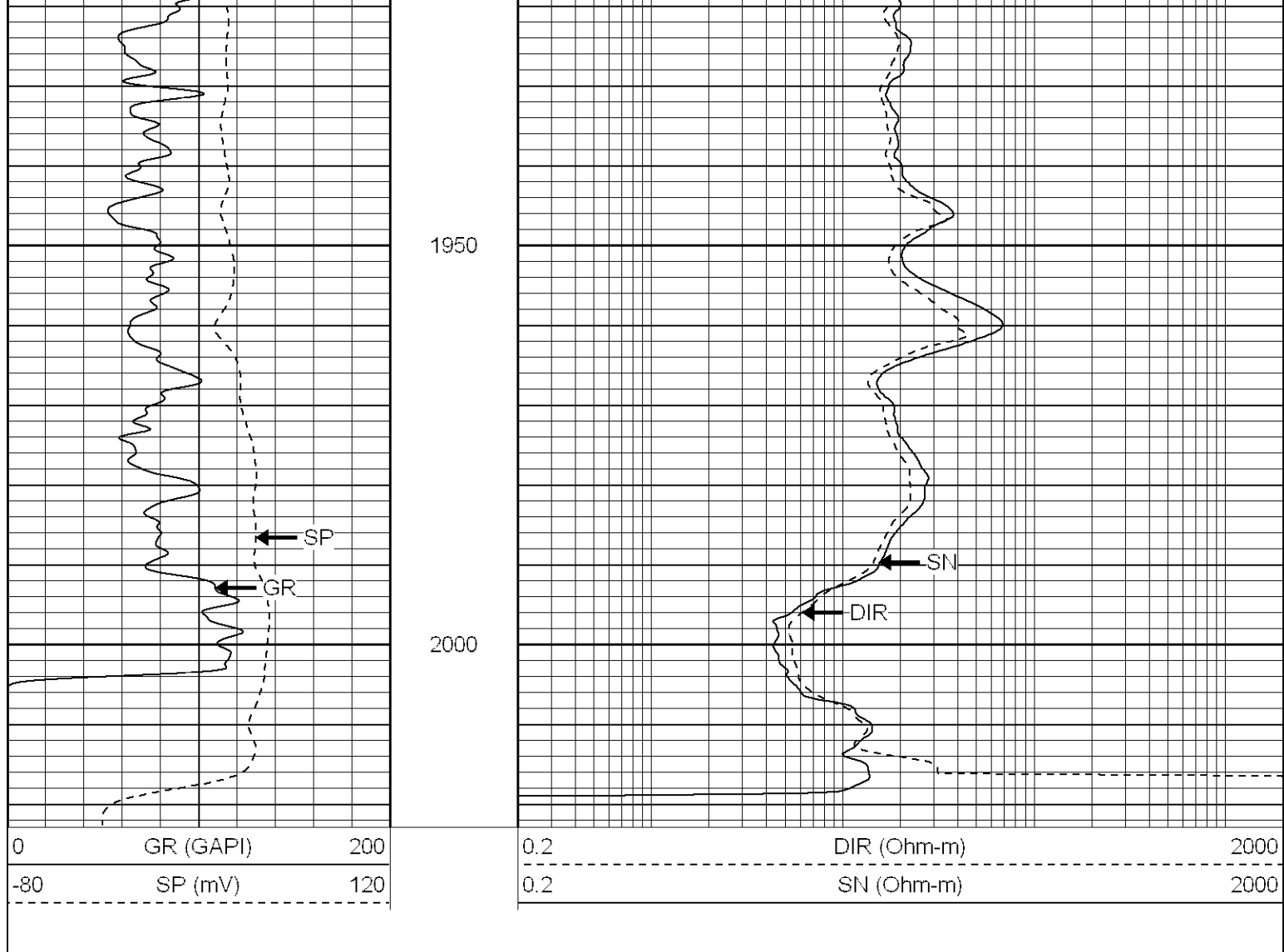
1750

1800

1850

1900





Calibration Report

Database File: lorencito12-5-34-662.db
 Dataset Pathname: pass1
 Dataset Creation: Sat Jan 19 08:09:08 2008 by Log Open-Cased 070814

Induction Tool Calibration Report

Serial Number: 120
 Tool Model: G
 Downhole Cal Performed: Wed Jan 02 10:31:57 2008
 Surface Cal Performed: Wed Jan 02 10:31:36 2008

Surface Calibration:	Air	Loop	
Conductivity Reference:	0.000	500.000	mmho
Conductivity Reading:	0.006	0.642	V
Internal Reference:	Zero	Cal	
Conductivity Reference:	0.000	500.000	mmho
Conductivity Reading:	0.005	0.641	V

Downhole Calibration:	Internal Zero	Internal Cal	
Conductivity Reference:	-0.432	499.755	mmho
Conductivity Reading:	-0.086	499.856	V
Short Normal Reference:	2.000	17.000	Ohm-m
Short Normal Reading:	0.004	0.200	V

Results:	Gain	Offset
Loop Conductivity:	786.490	-4.700
Downhole Correction:	1.000	-0.346
Short Normal Resistivity:	76.754	1.667

Gamma Ray Calibration Report		
Serial Number:	2000	
Tool Model:	P2000	
Performed:	Thu Jan 03 09:03:57 2008	
Calibrator Value:	200.0	GAPI
Background Reading:	54.0	cps
Calibrator Reading:	219.0	cps
Sensitivity:	0.2700	GAPI/cps

Sensor	Offset (ft)	Schematic	Description	Len (ft)	OD (in)	Wt (lb)
GR	17.75		GR-P2000 (2000)	3.50	3.25	40.00
DIC	6.89		IEL-G (120)	15.25	4.00	178.00
SP SN	1.50 1.00					
Dataset: lorencito12-5-34-66.db: field/well/run1/pass1 Total Length: 18.75 ft Total Weight: 218.00 lb O.D. 4.00 in						