

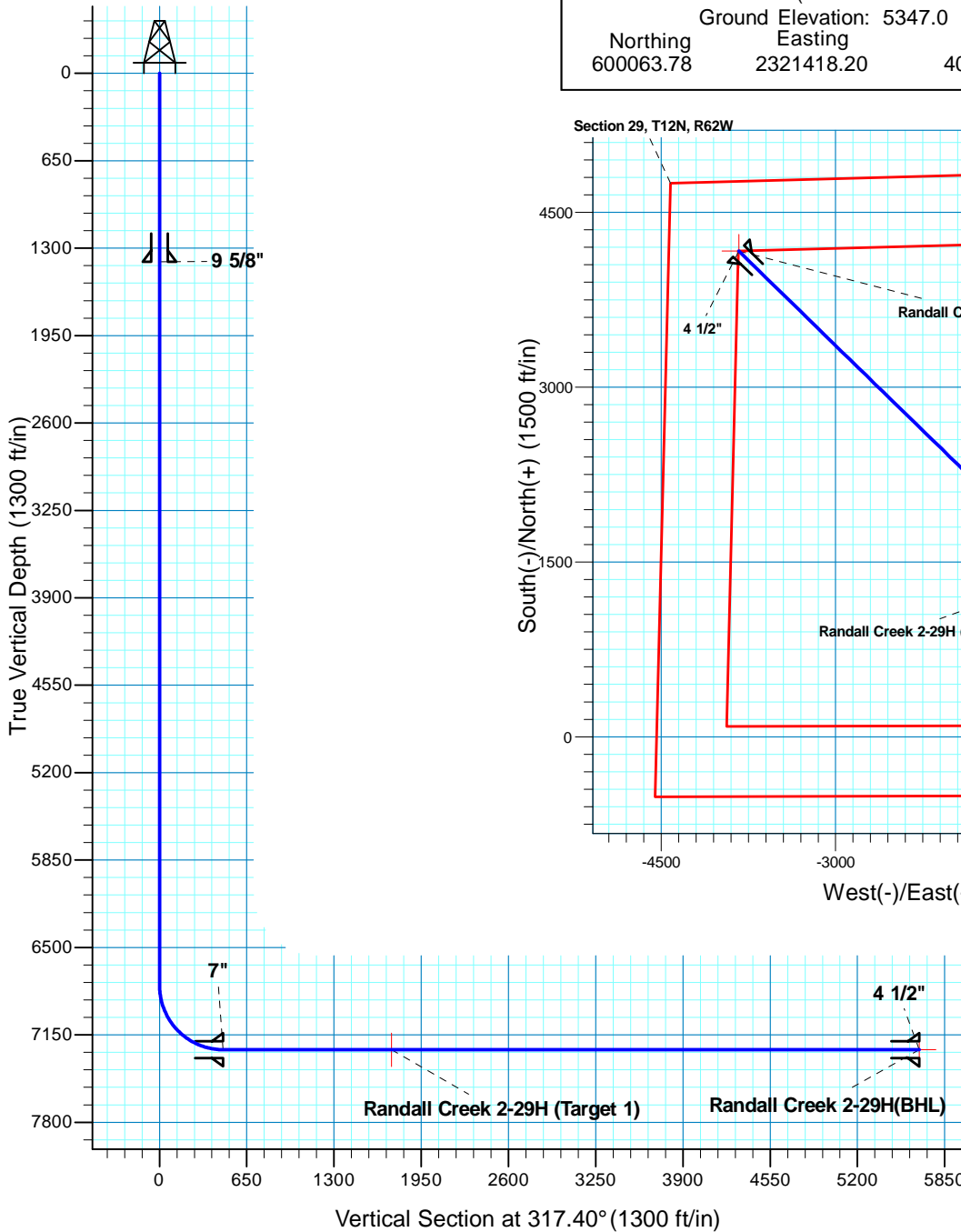
# Randall Creek 2-29H

Section 29 T12N R62W

Weld County, CO



Surface Location			
NAD 1927 (NADCON CONUS) Colorado North 501			
Ground Elevation: 5347.0 RIG @ 5372.0ft (TBD)			
Northing	Easting	Latitude	Longitude
600063.78	2321418.20	40° 58' 29.179 N	104° 20' 9.841 W



**T M**

Azimuths to True North  
Magnetic North: 8.83°

Magnetic Field  
Strength: 53637.1nT  
Dip Angle: 67.64°  
Date: 1/21/2010  
Model: IGRF200510

Project: DJ - Hereford Ranch  
Site: Randall Creek 02-29H  
Well: Randall Creek 2-29H  
Plan: APD

## SECTION DETAILS

Sec	MD	Inc	Azi	TVD	+N/-S	+E/-W	DLeg	TFace	VSec	Target
1	0.0	0.00	0.00	0.0	0.0	0.0	0.00	0.00	0.0	
2	6782.5	0.00	0.00	6782.5	0.0	0.0	0.00	0.00	0.0	
3	7532.5	90.00	323.42	7260.0	383.4	-284.5	12.00	323.42	474.8	
4	8793.5	90.00	323.42	7260.0	1396.0	-1036.1	0.00	0.00	1728.9	Randall Creek 2-29H (Target 1)
5	9254.4	90.00	314.20	7260.0	1742.5	-1339.2	2.00	-90.00	2189.1	Randall Creek 2-29H(BHL)
6	12731.0	90.00	314.20	7260.0	4166.4	-3831.6	0.00	0.00	5660.3	Randall Creek 2-29H(BHL)

## TARGET DETAILS

Name	TVD	+N/-S	+E/-W	Northing	Easting	Latitude	Longitude	Shape
Randall Creek 2-29H (Target 1)	7260.0	1396.0	-1036.1	601446.09	2320363.91	40° 58' 42.972 N	104° 20' 23.348 W	P point
Randall Creek 2-29H(BHL)	7260.0	4166.4	-3831.6	604179.48	2317532.27	40° 59' 10.342 N	104° 20' 59.798 W	Point