

Company		XTO Energy, Inc.	
Well		Apache Canyon 06-12	
Field		Purgatorie River	
County		Las Animas	
State		Colorado	
Location:		API # : 05-071-08470-00	
SEC 6		TWP 34S	
RGE 67W		Elevation 8117'	
Permanent Datum		Ground Level	
Log Measured From		Ground Level	
Drilling Measured From		Ground Level	
Date		1-18-06	
Run Number		One	
Depth Driller		1021'	
Depth Logger		972'	
Bottom Logged Interval		970'	
Top Log Interval		150'	
Open Hole Size		7 7/8"	
Type Fluid		Water	
Density / Viscosity		////	
Max. Recorded Temp.		N/A	
Estimated Cement Top		Surface	
Time Well Ready		7:00 A.M.	
Time Logger on Bottom		7:10 A.M.	
Equipment Number		T096	
Location		Trinidad	
Recorded By		S. Allen	
Witnessed By		Mr. Bill Blatnick	
Borehole Record		Tubing Record	
Run Number		Bit	
From		To	
Size		Weight	
From		To	
Casing Record		Size	
Surface String		8 5/8"	
Prot. String		Wgt/Ft	
Production String		Top	
Liner		Bottom	
		367'	
		00	
		N/A	

>>> Fold Here >>>

All interpretations are opinions based on inferences from electrical or other measurements and we cannot and do not guarantee the accuracy or correctness of any interpretation, and we shall not, except in the case of gross or willful negligence on our part, be liable or responsible for any loss, costs, damages, or expenses incurred or sustained by anyone resulting from any interpretation made by any of our officers, agents or employees. These interpretations are also subject to our general terms and conditions set out in our current Price Schedule.

Comments

Well Directions:
Alamosito Canyon-Go To Top of Hill-Turn Right at B2 Compressor-Next Right-Drive Through Location-
Follow Road to "Y"-Take Right Fork-Stay on Main Road-Drive Through AC 01-05, AC 01-08,
Follow Road to Location.

No Repeat Section Ran At Customer Request.

Log Ran With 0 PSI At Surface.

Database File: ac0612-11806b.db
Dataset Pathname: pass2
Presentation Format: cblrt
Dataset Creation: Wed Jan 18 07:11:54 2006 by Log Warrior 7.0 STD Ope
Charted by: Depth in Feet scaled 1:240

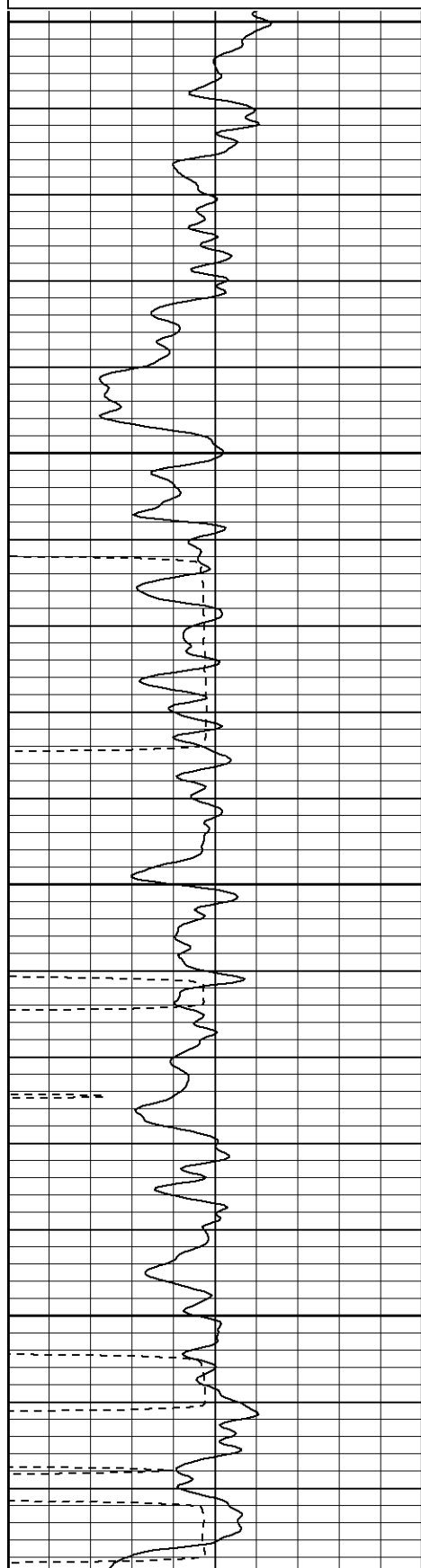
0	GR (GAPI)	200
400	TT3 (usec)	200

200	GR (GAPI)	400

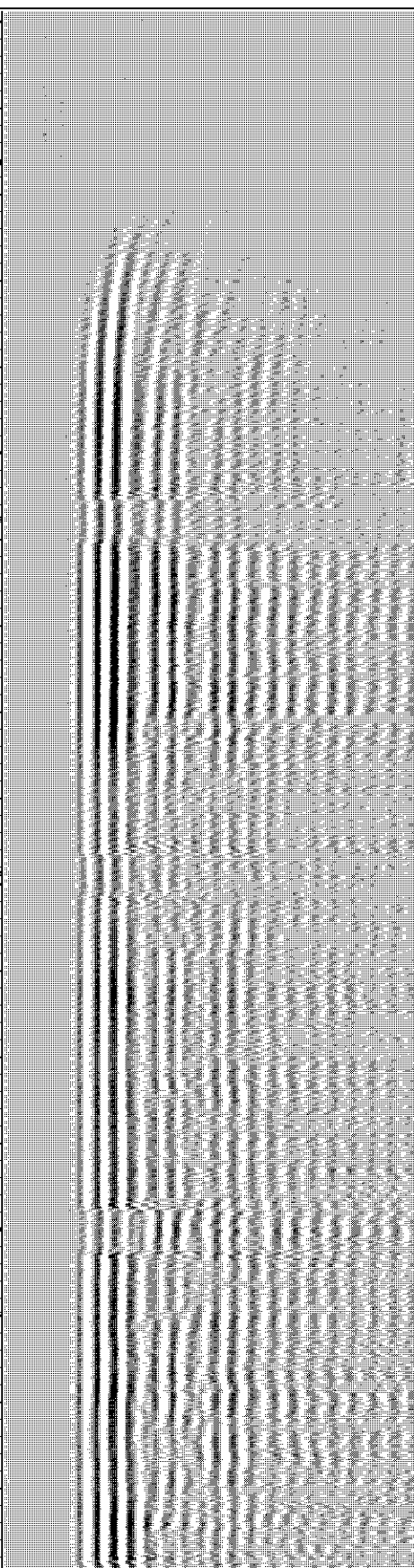
0	Amplitude (mV)	100
18	CCL	-2

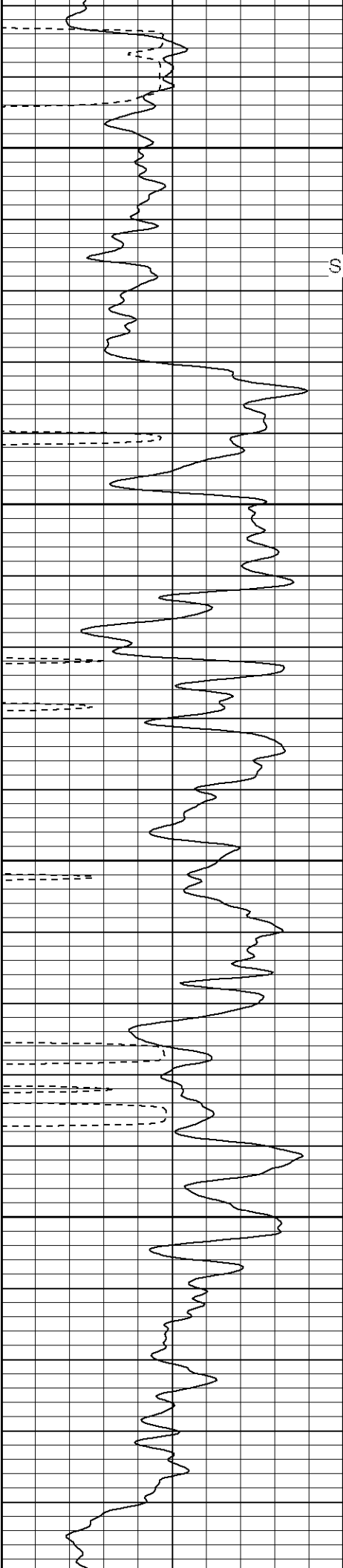
200	CBL5	1200

200 VDL 1200



150
Fluid Level
200
250
300





Surface Casing

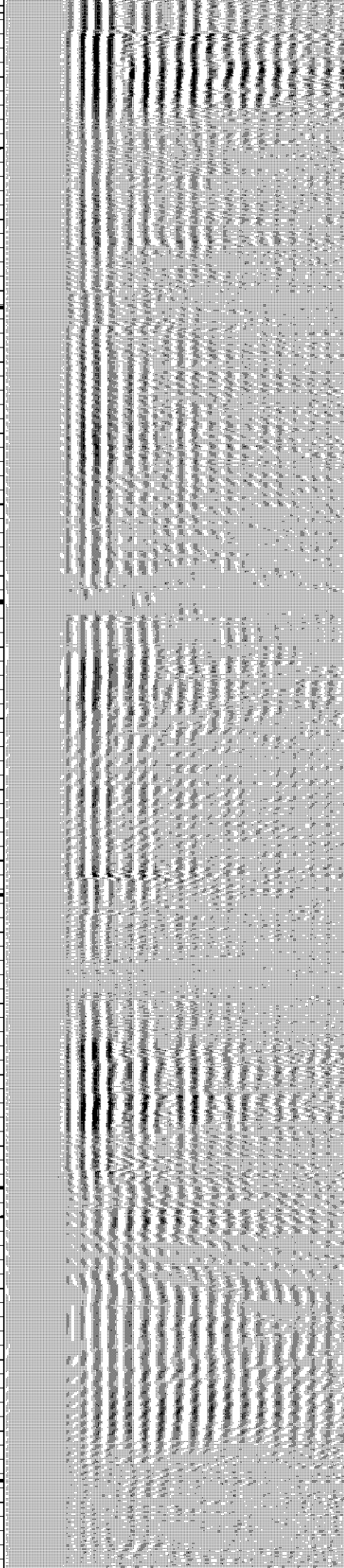
350

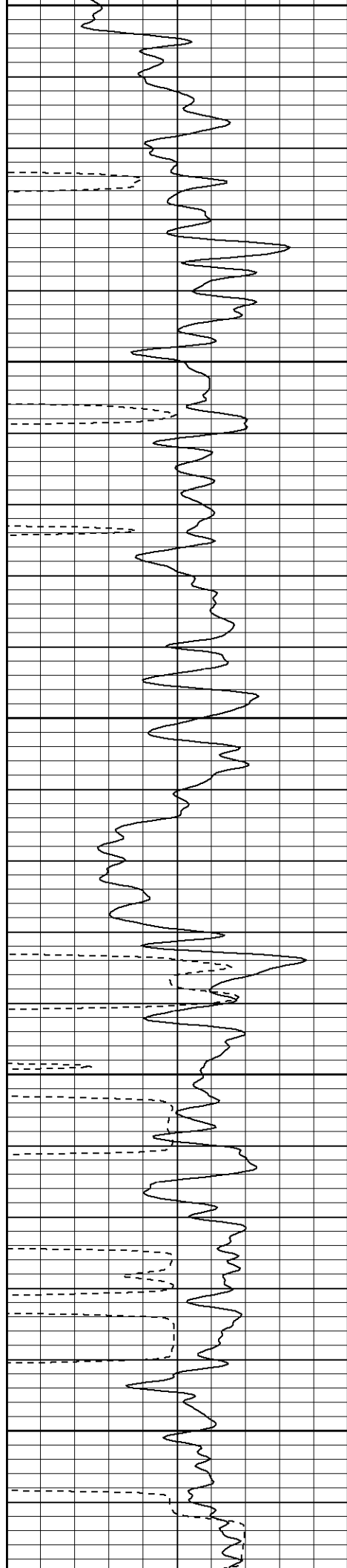
400

450

500

550





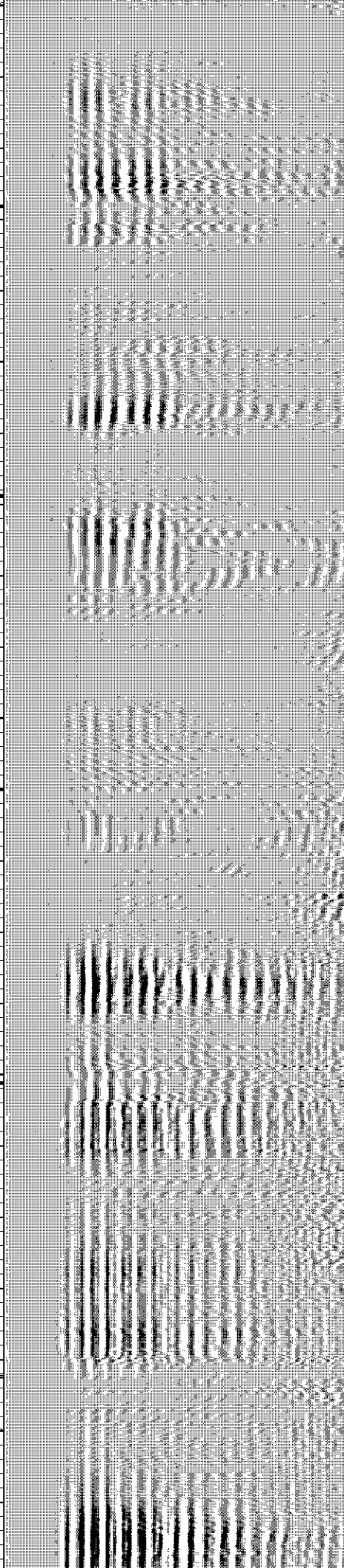
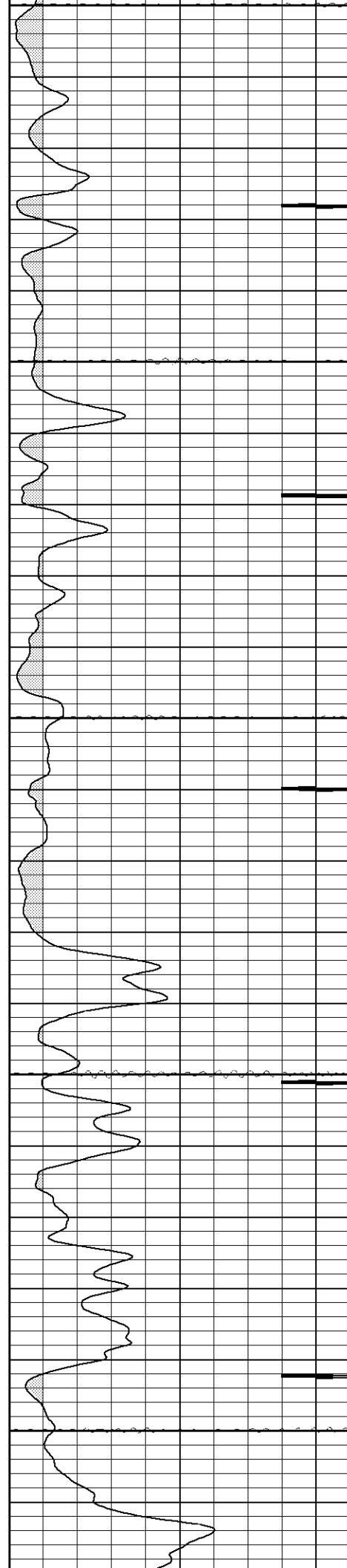
550

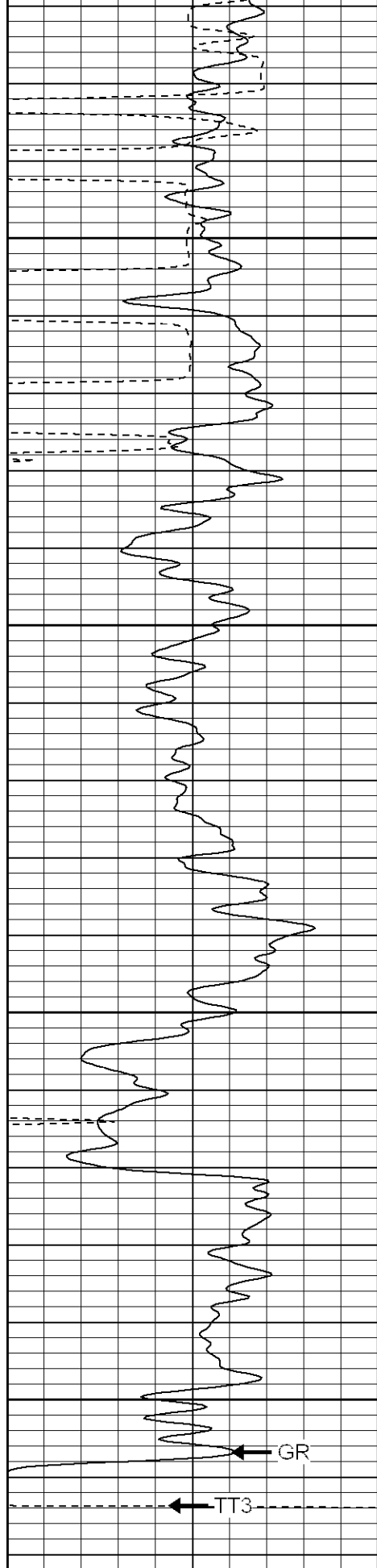
600

650

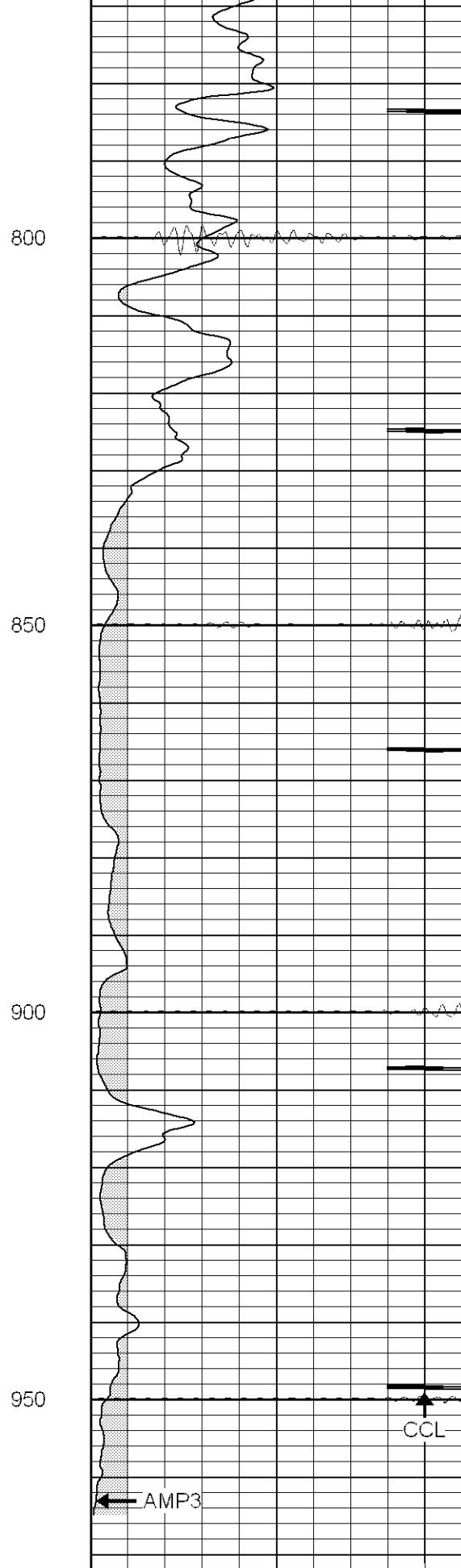
700

750

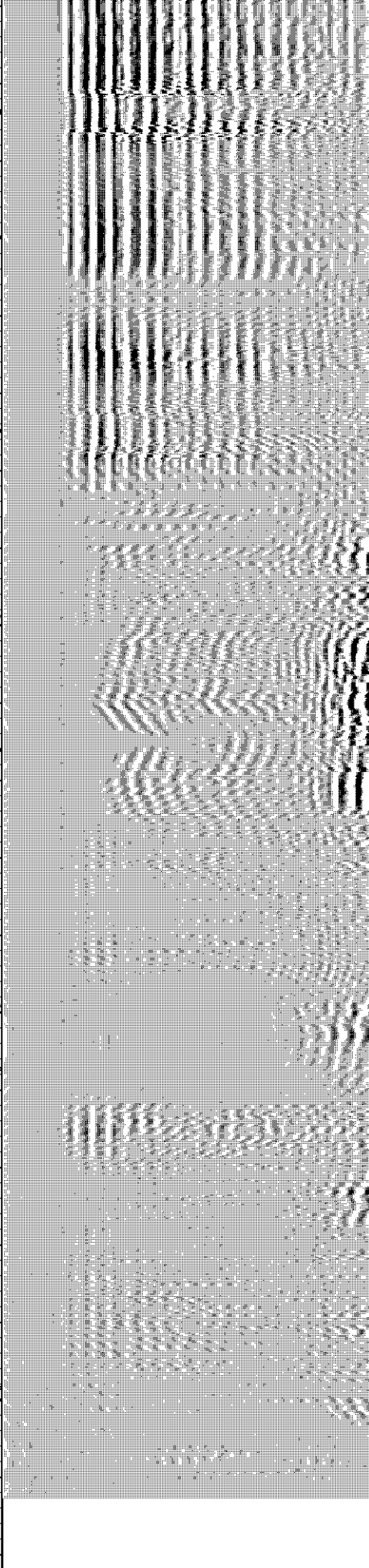




0	GR (GAPI)	200
400	TT3 (usec)	200
200	GR (GAPI)	400



0	Amplitude (mV)	100
18	CCL	-2
200	CBL5	1200



200	VDL	1200
-----	-----	------

Cement Bond Log Calibration Report

Serial Number:	Titan3		
Tool Model:	T3		
Performed:	Tue Jan 17 09:57:07 2006		
Depth:	758.779	ft	
Casing Diameter:	5.5	in	
	3' Spacing	5' Spacing	
Signal Zero:	1	1	mV
Calibrated Amplitude:	85	85	mV
Reading at Signal Zero:	0	0.01	V
Reading in Free Pipe:	1	1.4	V
Gain:	84	60.4317	
Offset:	1	0.395683	

Gamma Ray Calibration Report

Serial Number:	Titan3	
Tool Model:	T2	
Performed:	Tue Sep 20 15:01:32 2005	
Calibrator Value:	200.0	GAPI
Background Reading:	54.0	cps
Calibrator Reading:	219.0	cps
Sensitivity:	1.1000	GAPI/cps

Sensor	Offset (ft)	Schematic	Description	Len (ft)	OD (in)	Wt (lb)
GR	13.40		GR-T2 (Titan3)	2.52	2.44	25.00
WVF5	9.24		CBL-T3 (Titan3)	7.23	2.44	110.00
WVF3	8.24					
CENT	4.91		X	3.00	1.69	25.00
CCL	0.70		CCL-T2 (Titan2) Short	1.91	2.75	15.00
		Dataset:	/field/well/run1/_plots/_jobs_/cbl			
		Total Length:	14.66 ft			
		Total Weight:	175.00 lb			
		O.D.	2.75 in			