



SUPERIOR
Black Lick, Pa.
Mercer, Pa.
Wooster, Oh.
Cleveland, Ok.
Trinidad, Co.

CEMENT BOND GAMMA RAY

Company El Paso E&P Company, L.P.
Well VPR"C"-138
Field Purgatorie River
County Las Animas
State CO

Company El Paso E&P Company, L.P.
Well VPR"C"-138
Field Purgatorie River
County Las Animas
State CO

Location: API #: 05 071 09056 00

SEC 2 TWP 35S RGE 67W

Permanent Datum Ground Level Elevation 8033'
Log Measured From Ground Level
Drilling Measured From Ground Level

Other Services
TEMP
Elevation
K.B. -----
D.F. -----
G.L. 8033'

Date	1/30/07
Run Number	one
Depth Driller	2673'
Depth Logger	2597'
Bottom Logged Interval	2593'
Top Log Interval	Surf.
Open Hole Size	7 7/8"
Type Fluid	water
Density / Viscosity	///
Max. Recorded Temp.	134F
Estimated Cement Top	120'
Time Well Ready	ROA
Time Logger on Bottom	10:58
Equipment Number	T244
Location	Trinidad
Recorded By	Worley
Witnessed By	
Borehole Record	
Run Number	Bit From To Size Weight From To
Casing Record	Size Wgt/Ft Top Bottom
Surface String	8 5/8" 00 328'
Prot. String	
Production String	5 1/2" 00 NA
Liner	

<<< Fold Here >>>

All interpretations are opinions based on inferences from electrical or other measurements and we cannot and do not guarantee the accuracy or correctness of any interpretation, and we shall not, except in the case of gross or willful negligence on our part, be liable or responsible for any loss, costs, damages, or expenses incurred or sustained by anyone resulting from any interpretation made by any of our officers, agents or employees. These interpretations are also subject to our general terms and conditions set out in our current Price Schedule.

Comments

Lorencito Gate, at Y stay right, take 2nd right, drive to T, turn right, 1st left to location.



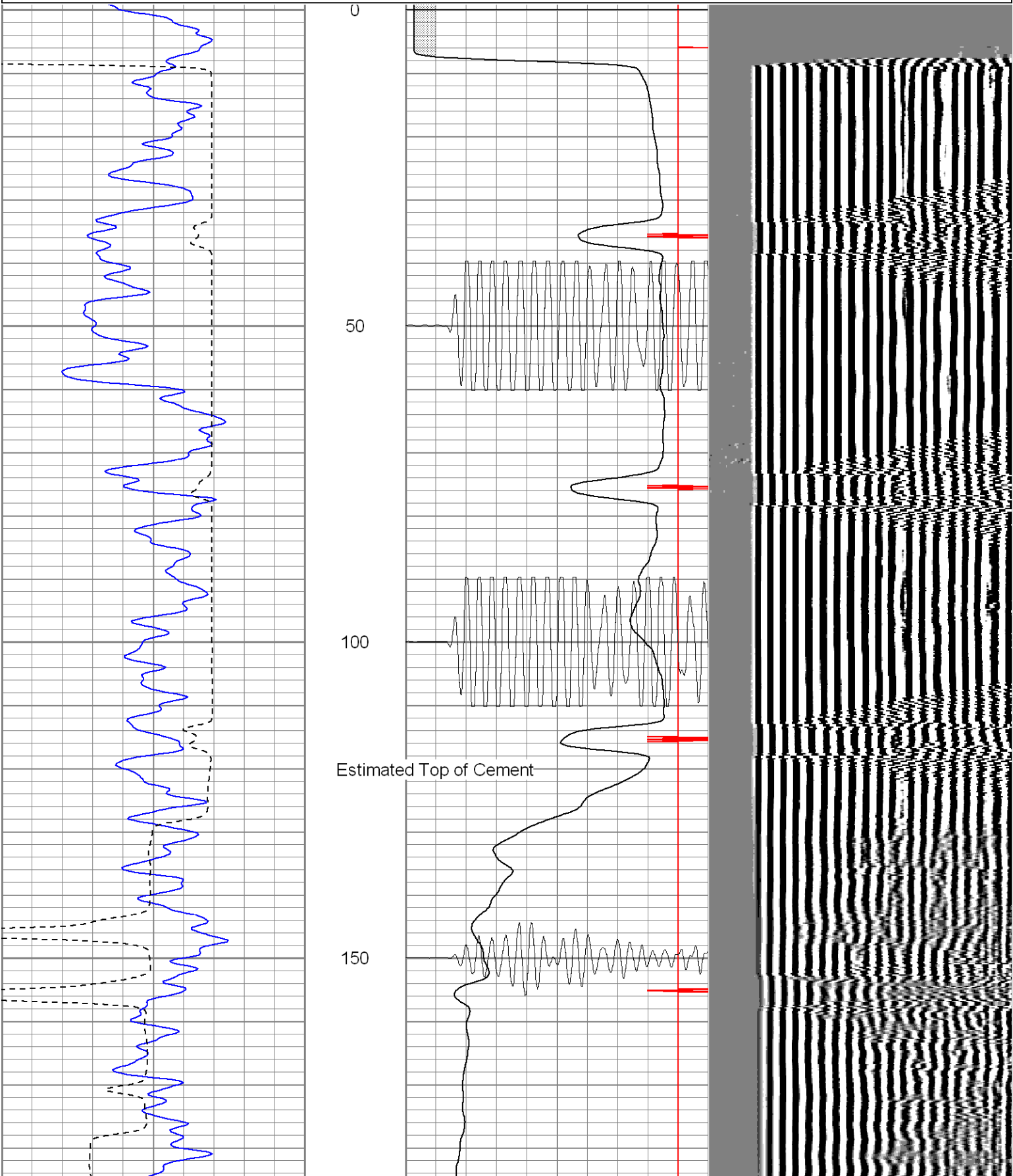
SUPERIOR

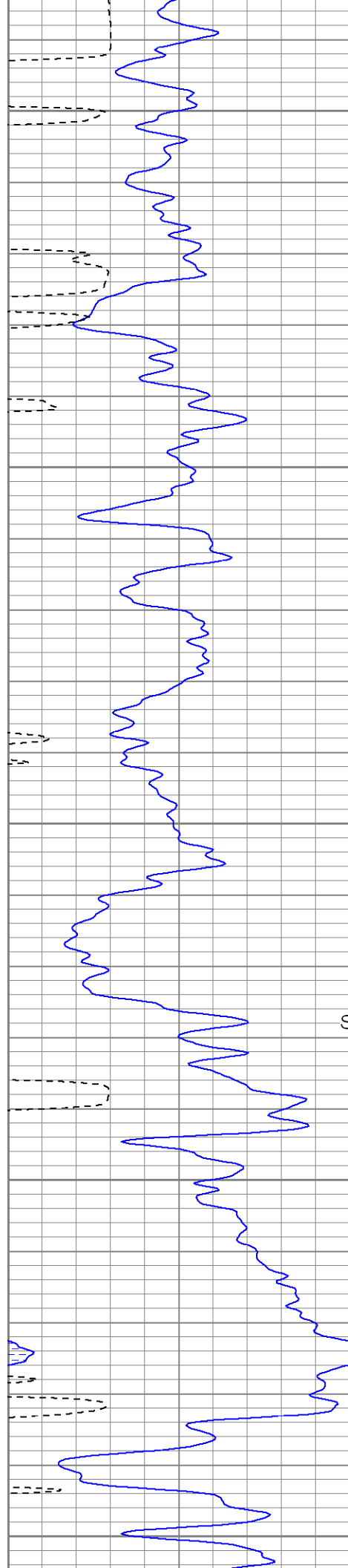
Black Lick, Pa.
Mercer, Pa.
Wooster, Oh.
Cleveland, Ok.
Trinidad, Co.

Main Pass

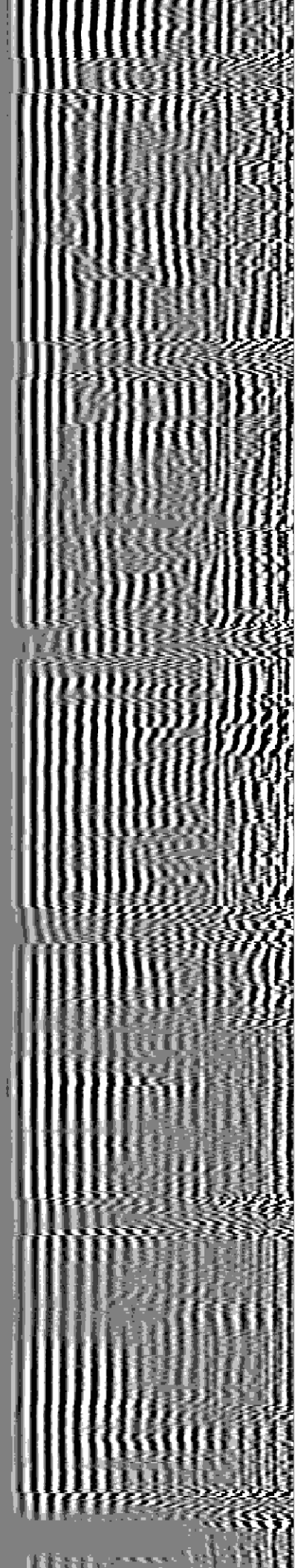
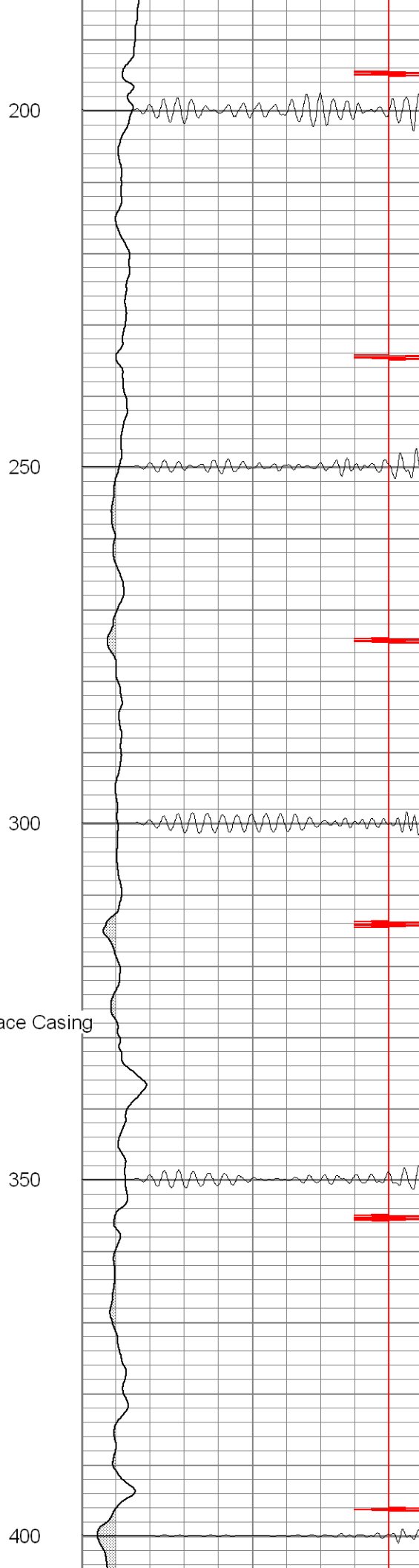
Database File: vprc138b13007.db
Dataset Pathname: pass3
Presentation Format: cblrt
Dataset Creation: Tue Jan 30 11:09:50 2007 by Log Warrior 7.0 STD Cas
Charted by: Depth in Feet scaled 1:240

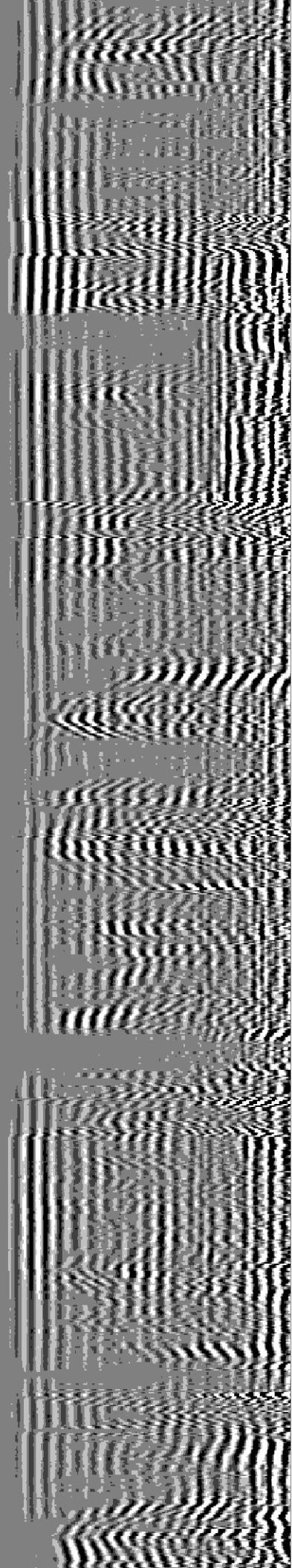
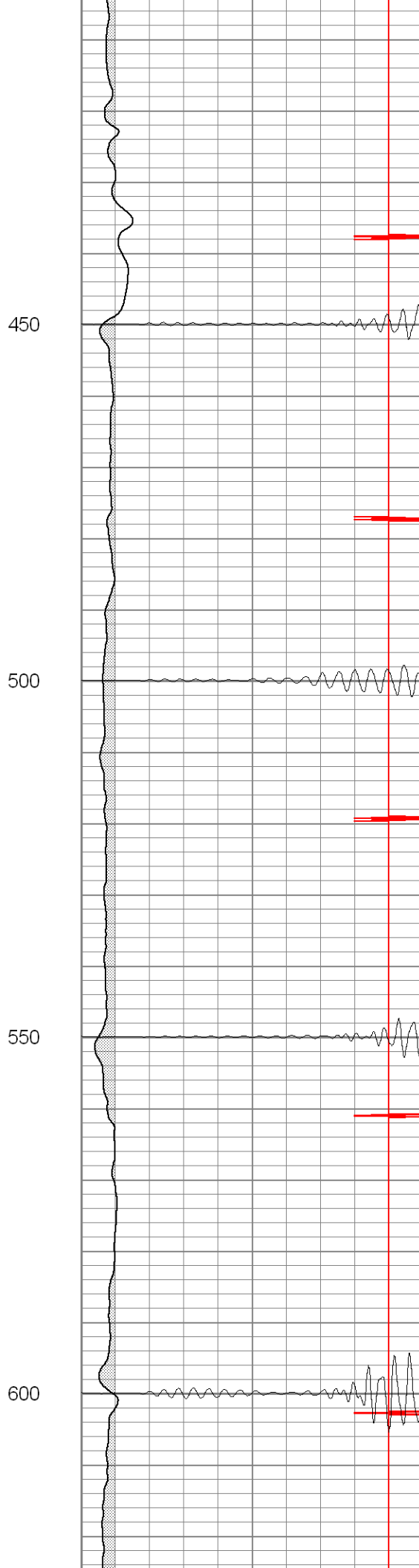
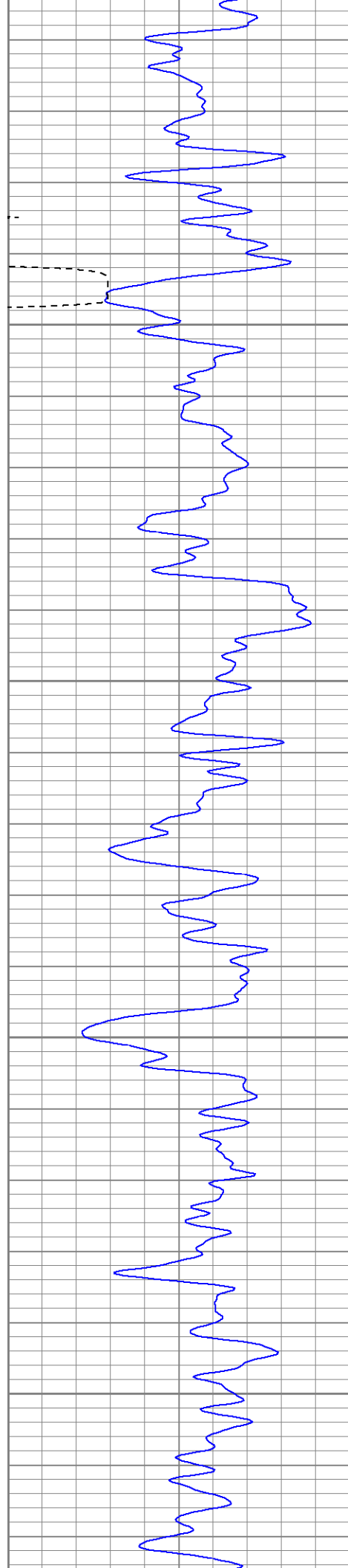
0	GR (GAPI)	200	0	AMP3 (mV)	100	200	Variable Density	1200
400	TT3 (usec)	200	18	CCL	-2			
			200	CBL5	1200			

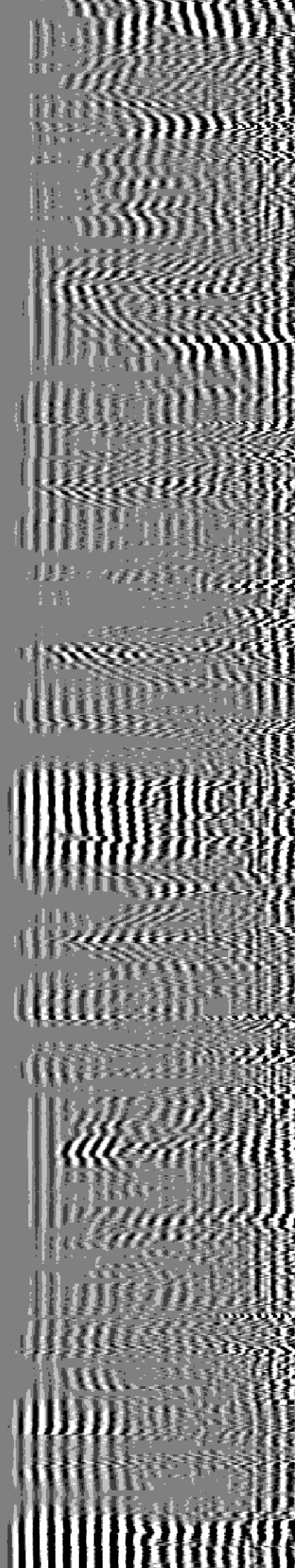
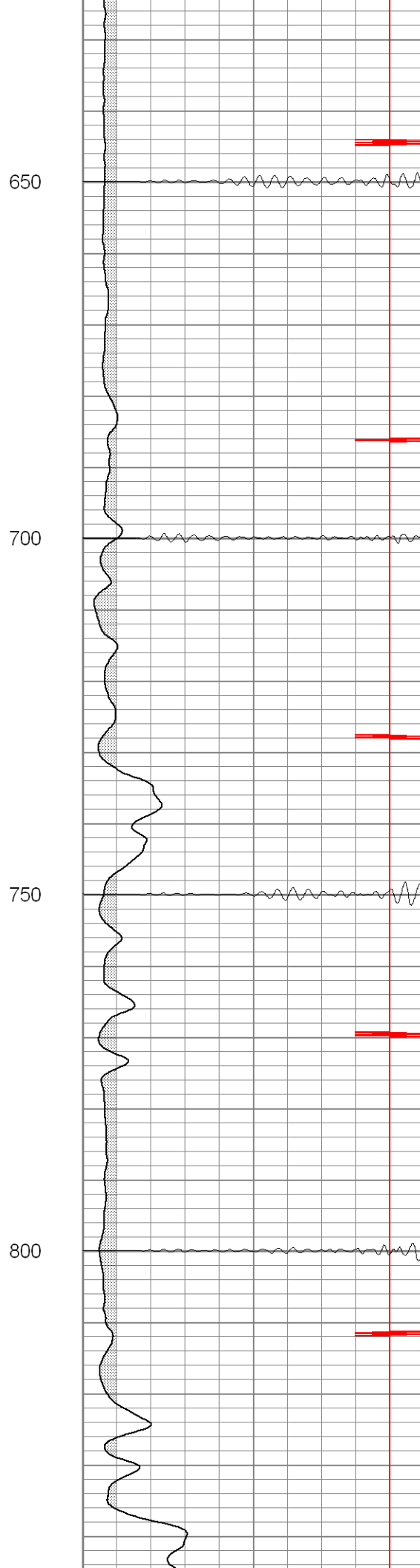
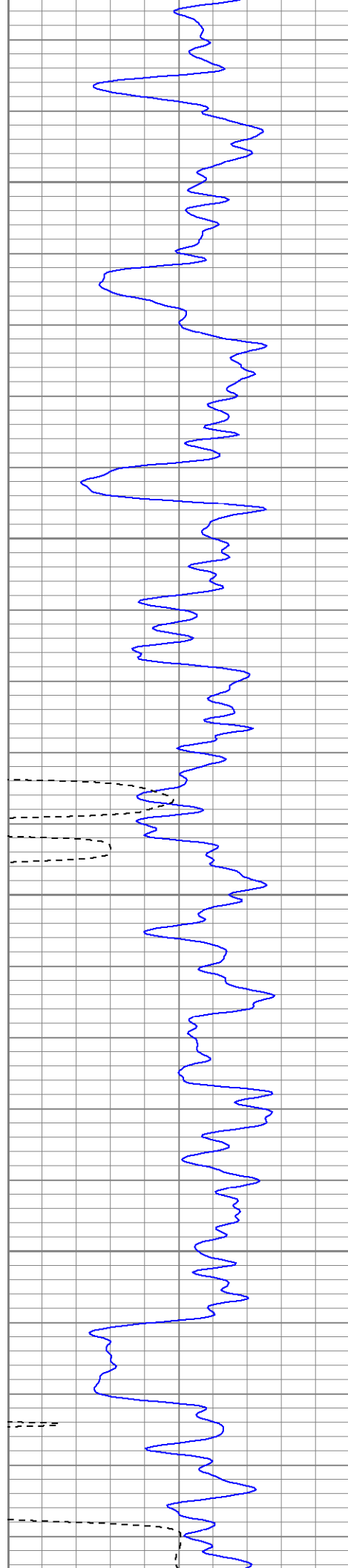


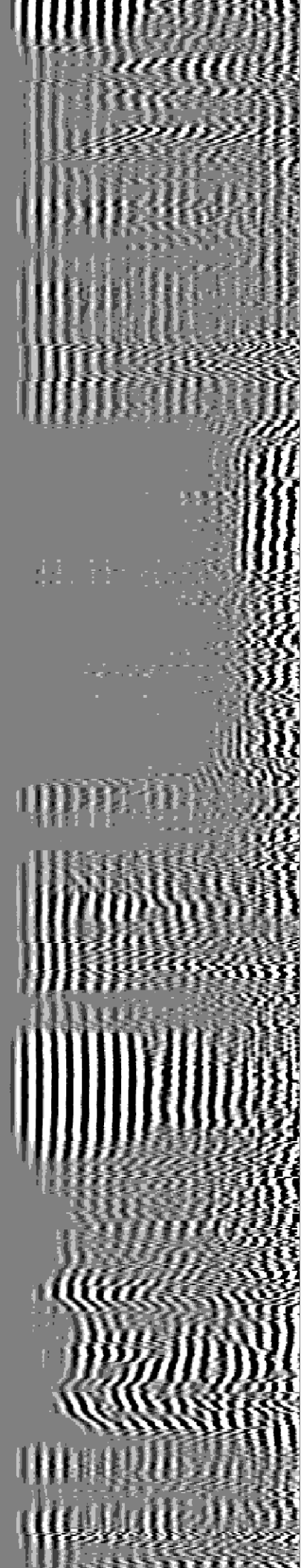
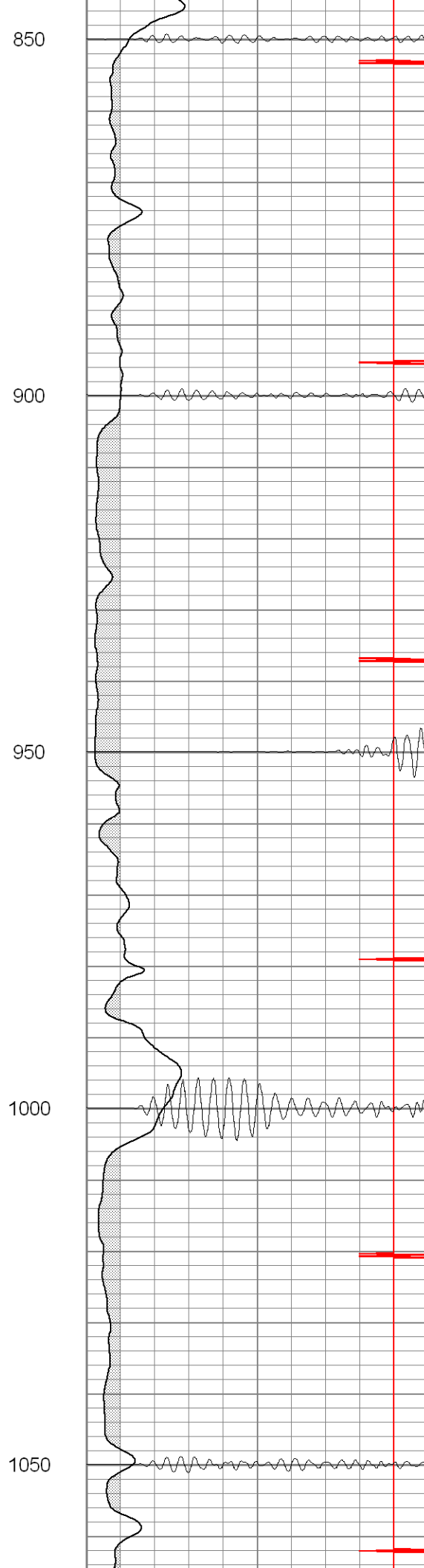
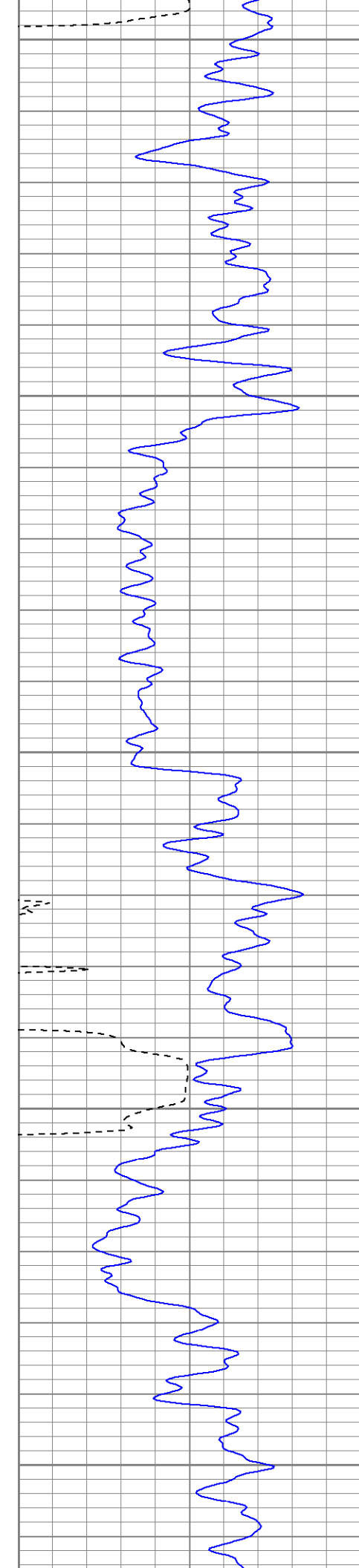


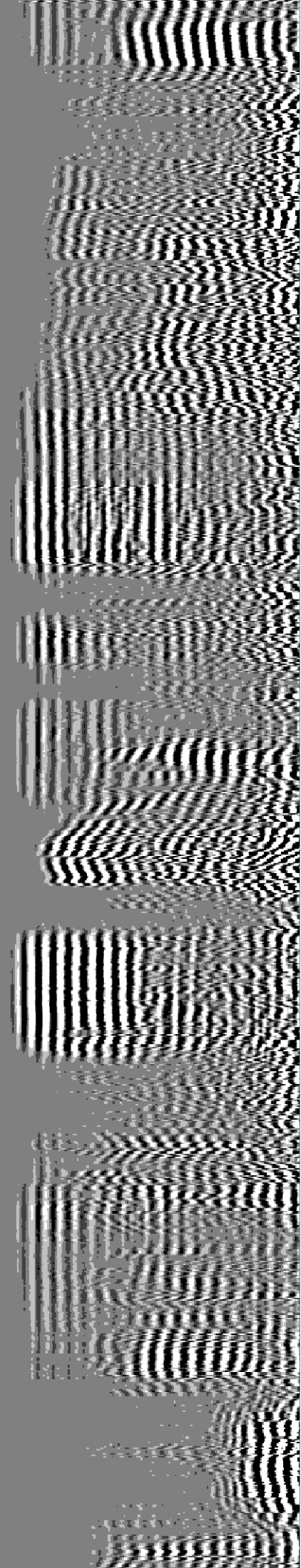
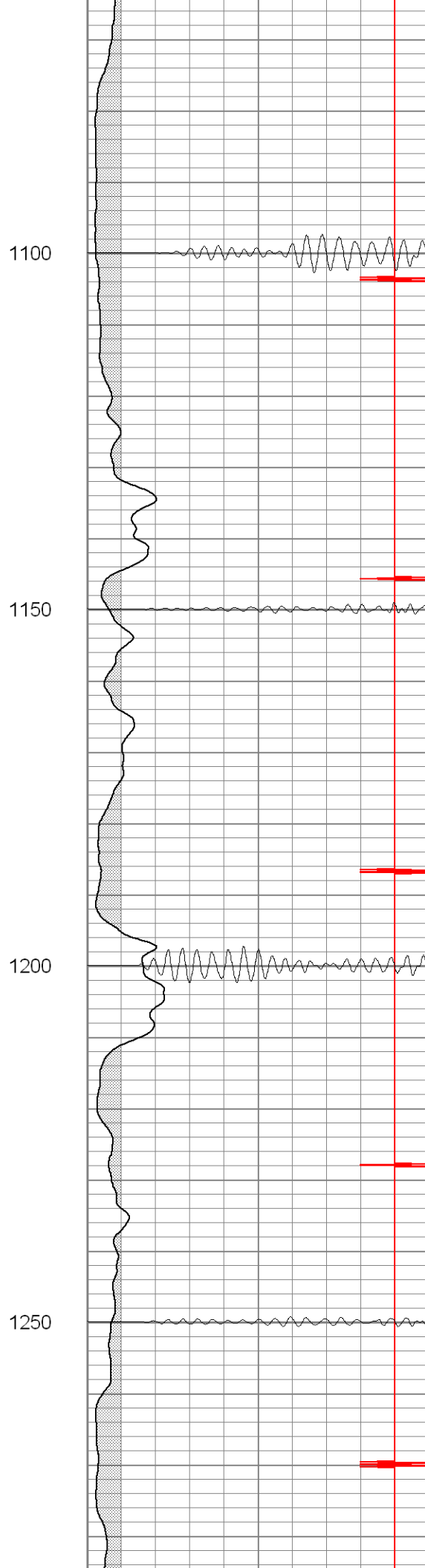
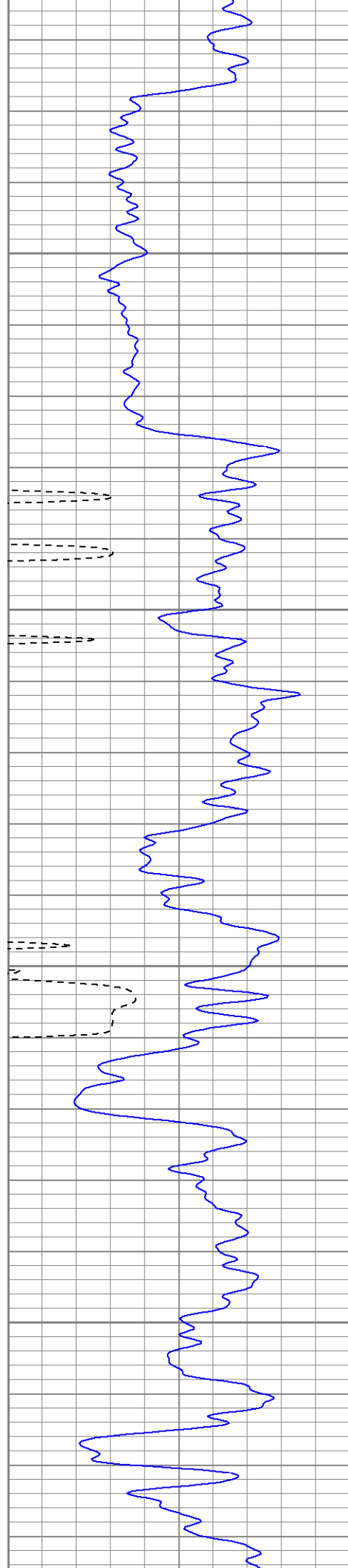
Surface Casing

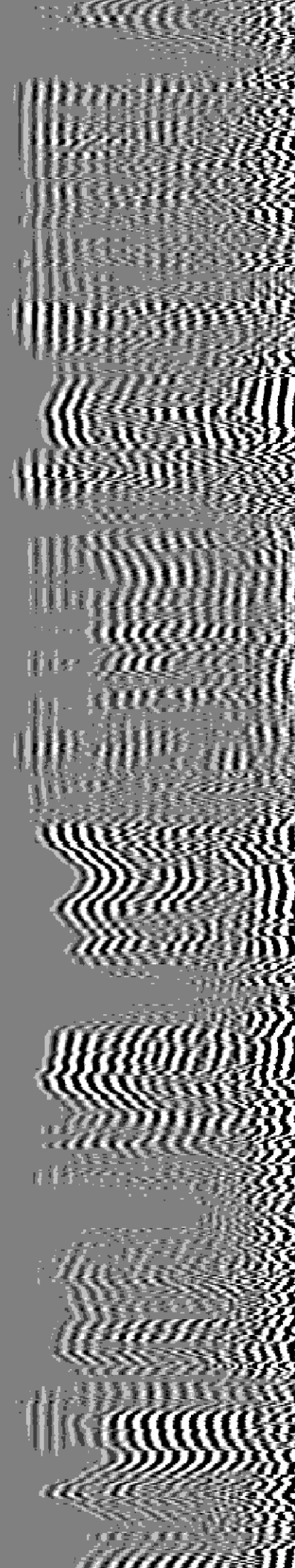
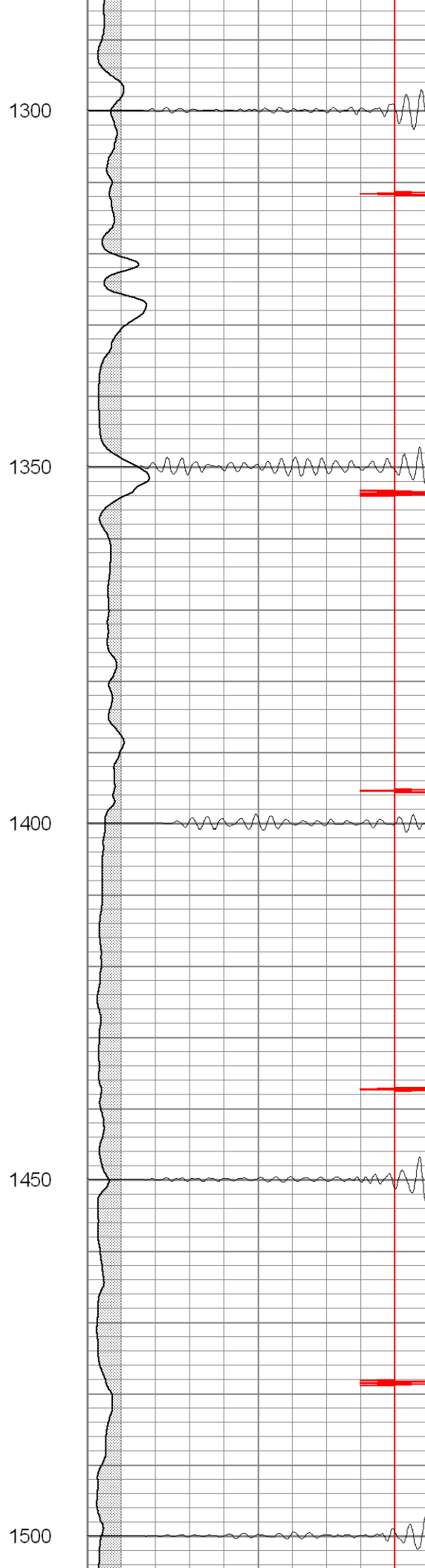
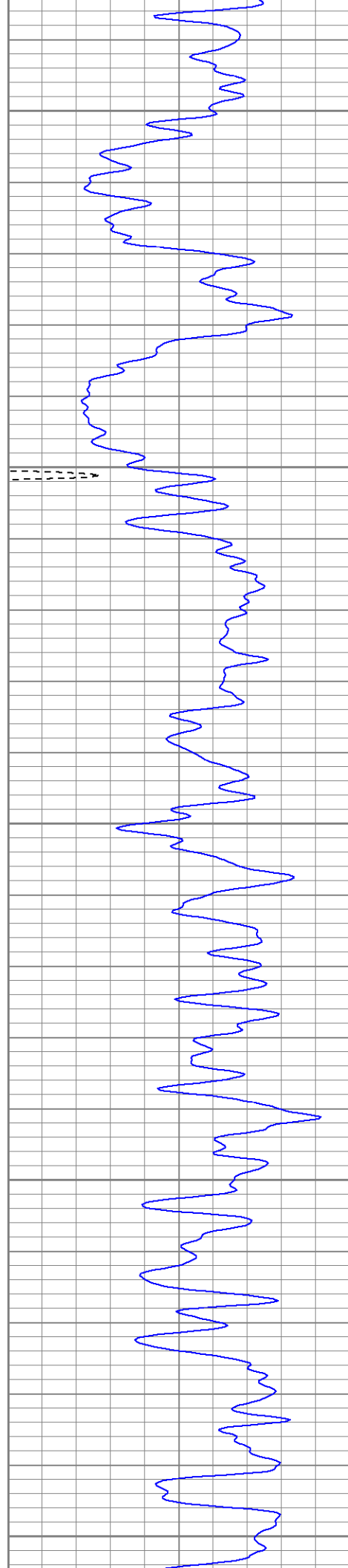


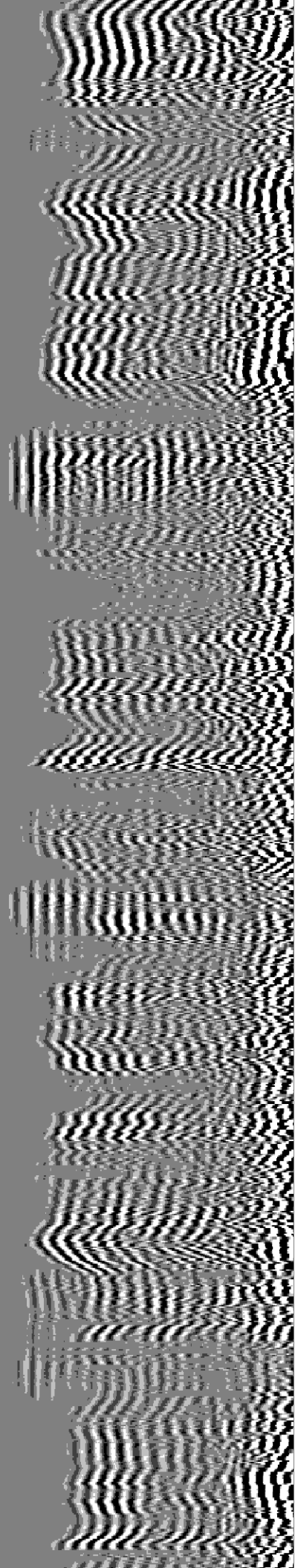
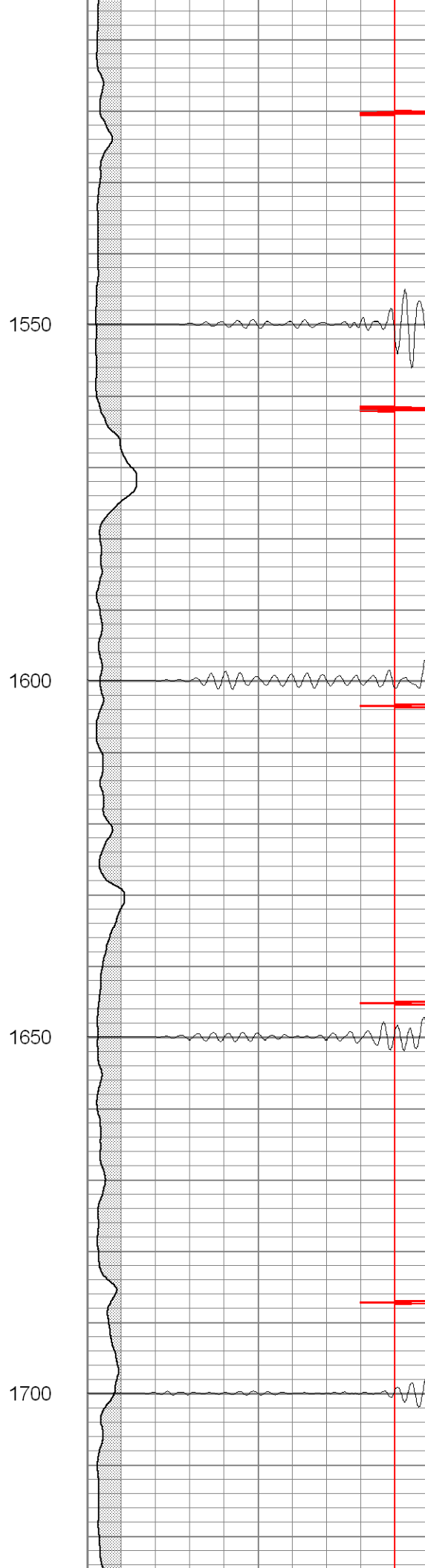
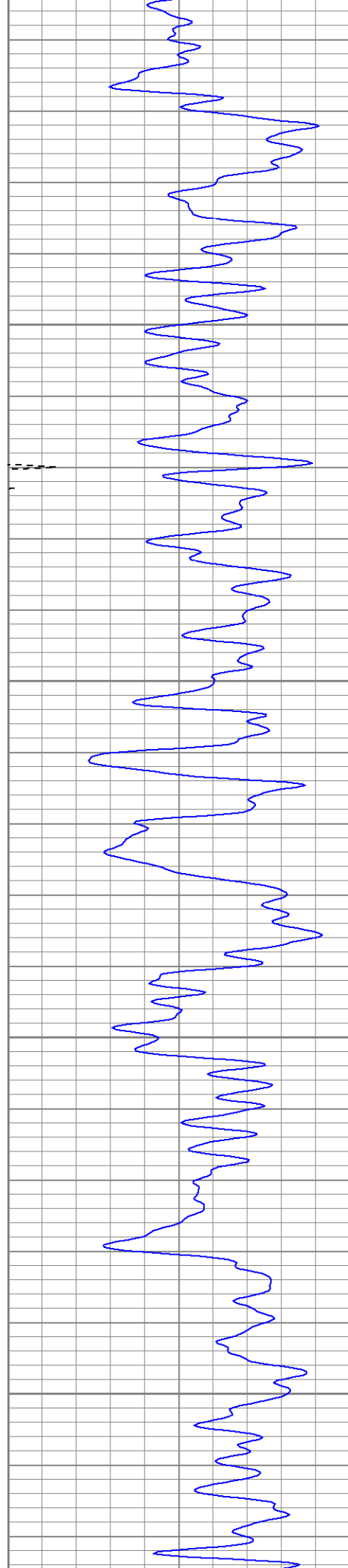


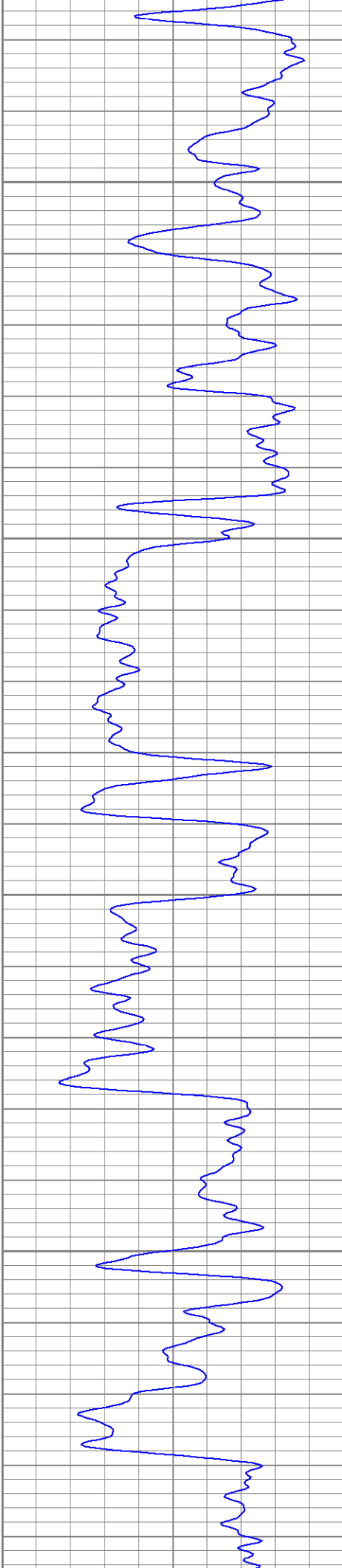










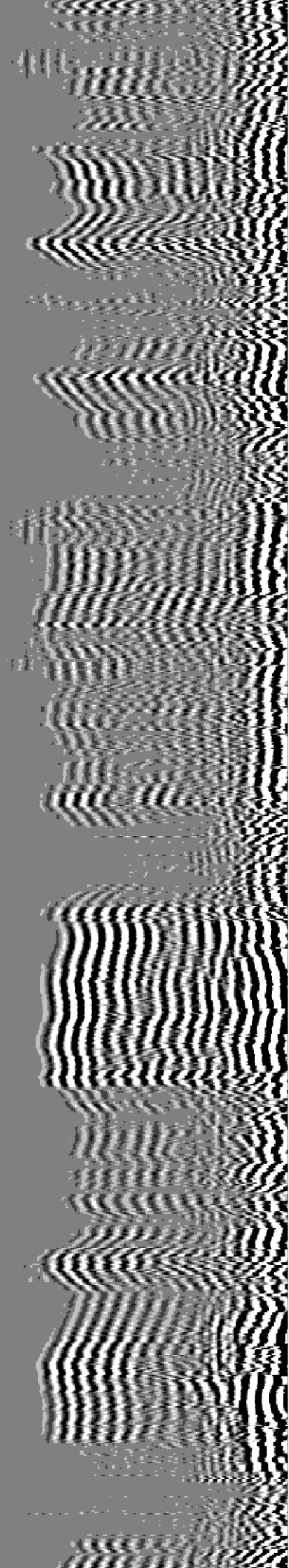


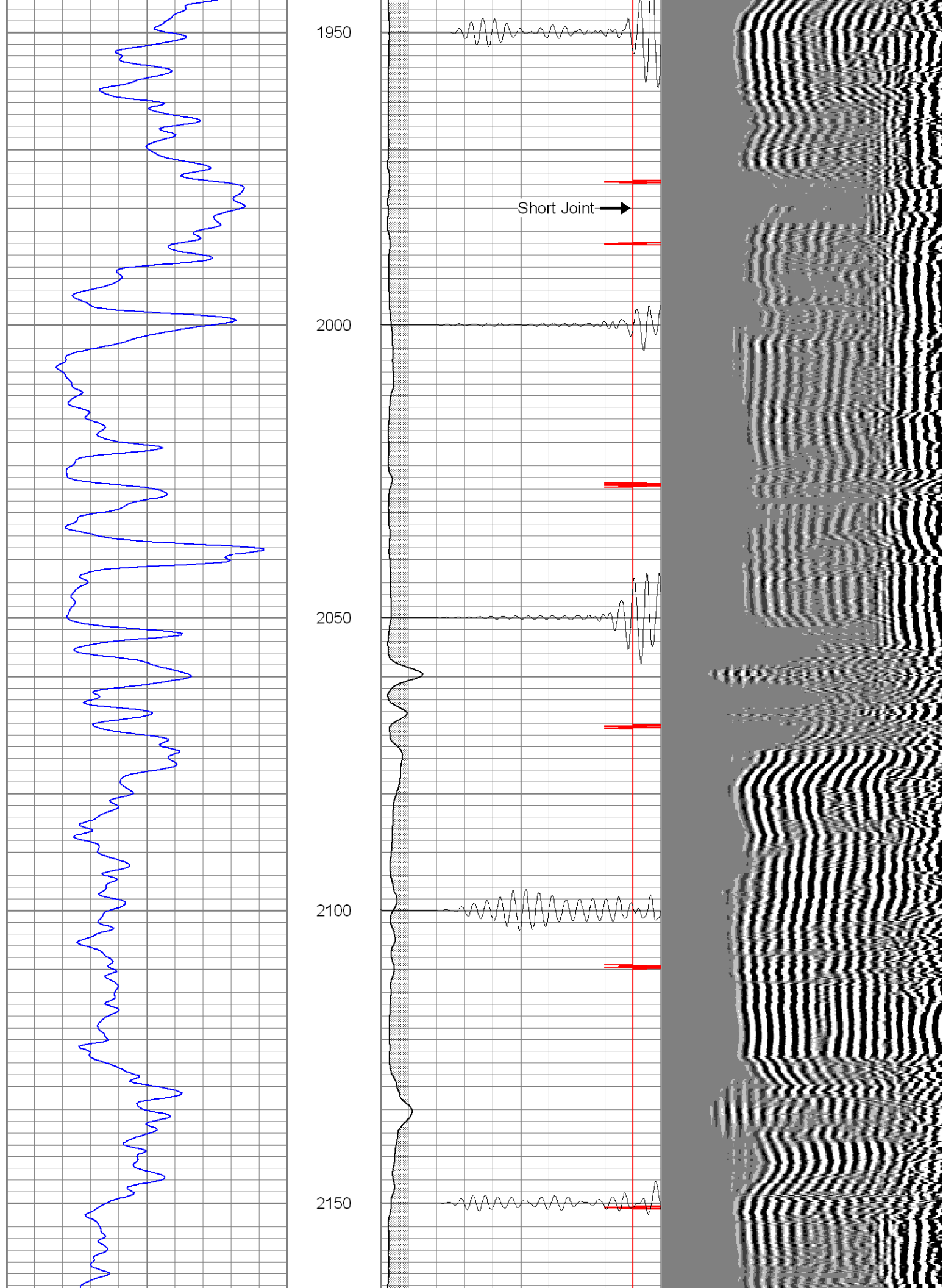
1750

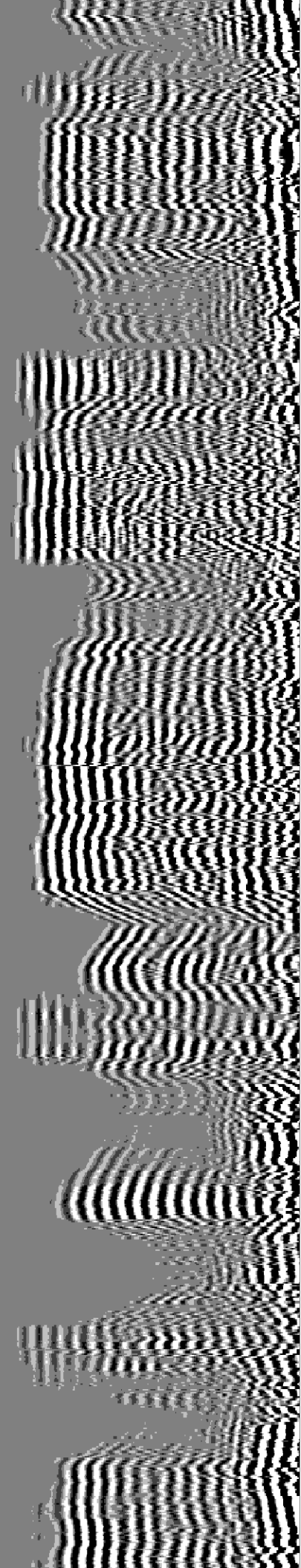
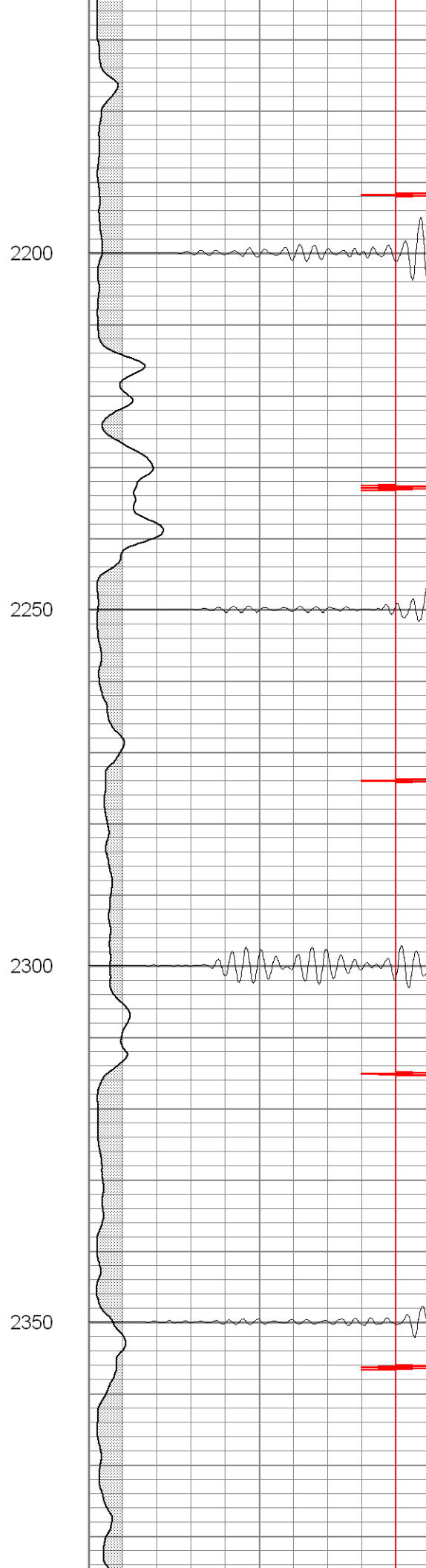
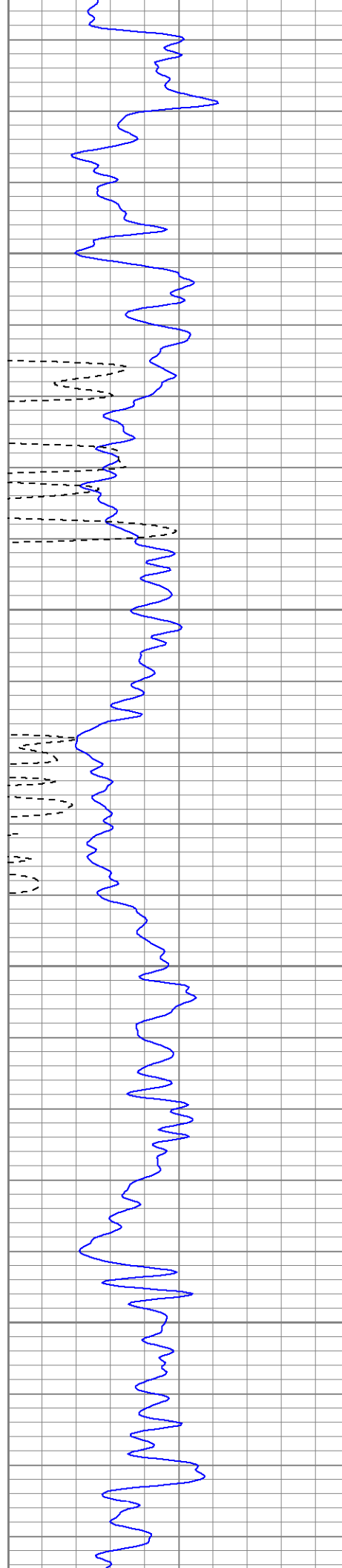
1800

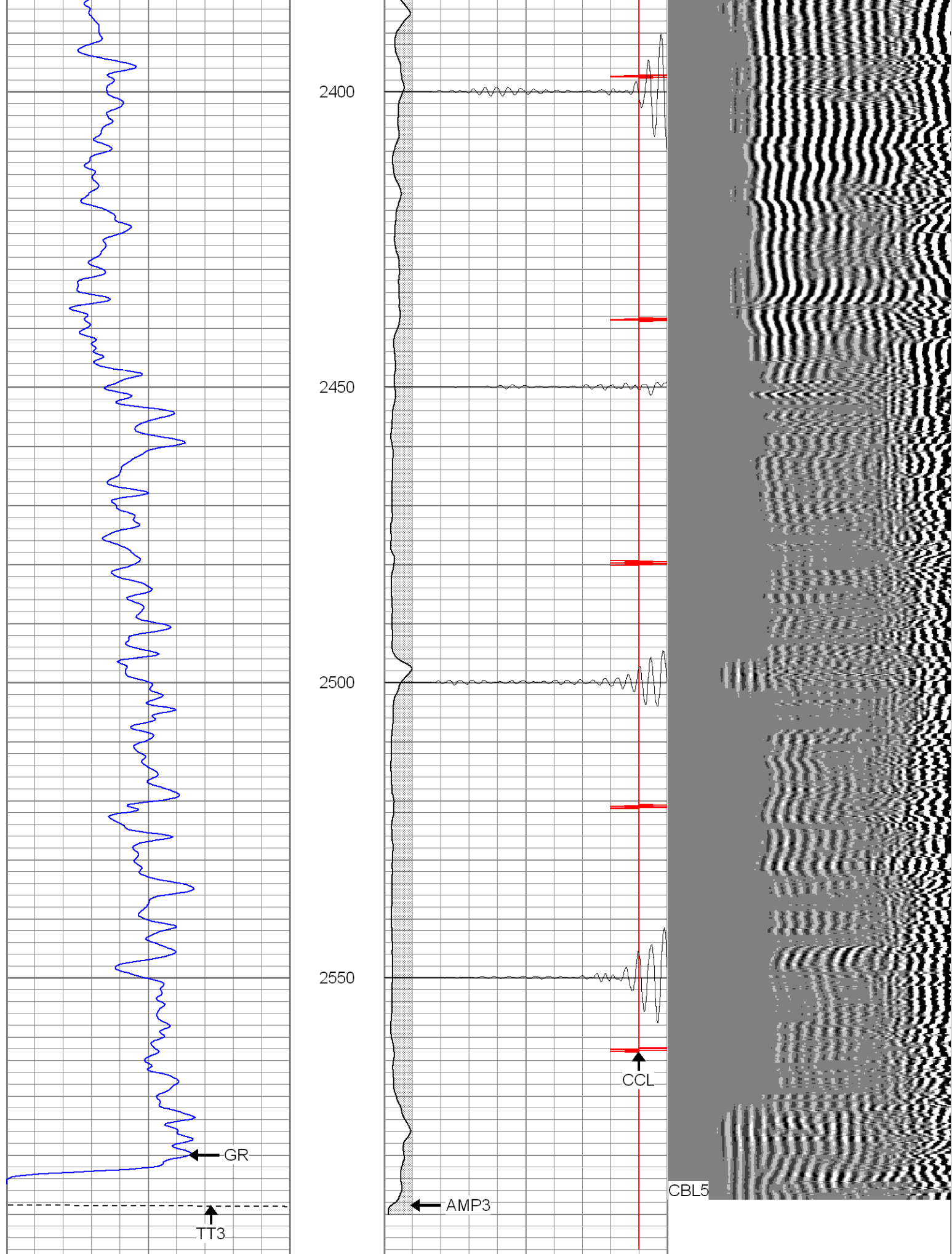
1850

1900









0	GR (GAPI)	200	0	AMP3 (mV)	100	200	Variable Density	1200
400	TT3 (usec)	200	18	CCL	-2			

100	TT3 (usec)	200
-----	------------	-----

10	CCL	2
200	CBL5	1200



SUPERIOR

Black Lick, Pa.
 Mercer, Pa.
 Wooster, Oh.
 Cleveland, Ok.
 Trinidad, Co.

Repeat Section

Database File:

vprc138b13007.db

Dataset Pathname:

pass1

Presentation Format:

cblrt

Dataset Creation:

Tue Jan 30 11:03:30 2007 by Log Warrior 7.0 STD Cas

Charted by:

Depth in Feet scaled 1:240

0	GR (GAPI)	200
400	TT3 (usec)	200

0	AMP3 (mV)	100
18	CCL	-2
200	CBL5	1200

200	Variable Density	1200
-----	------------------	------

