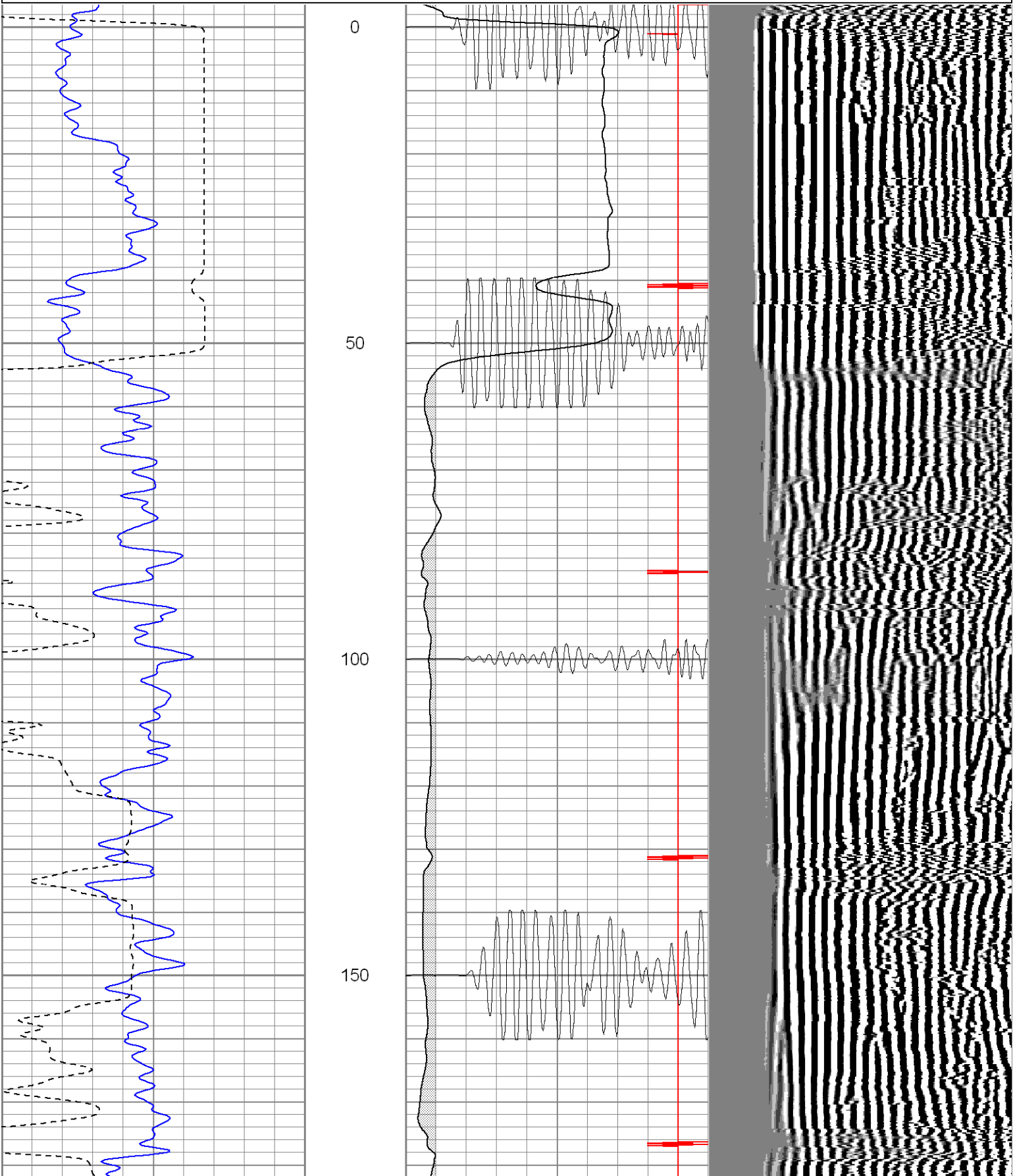


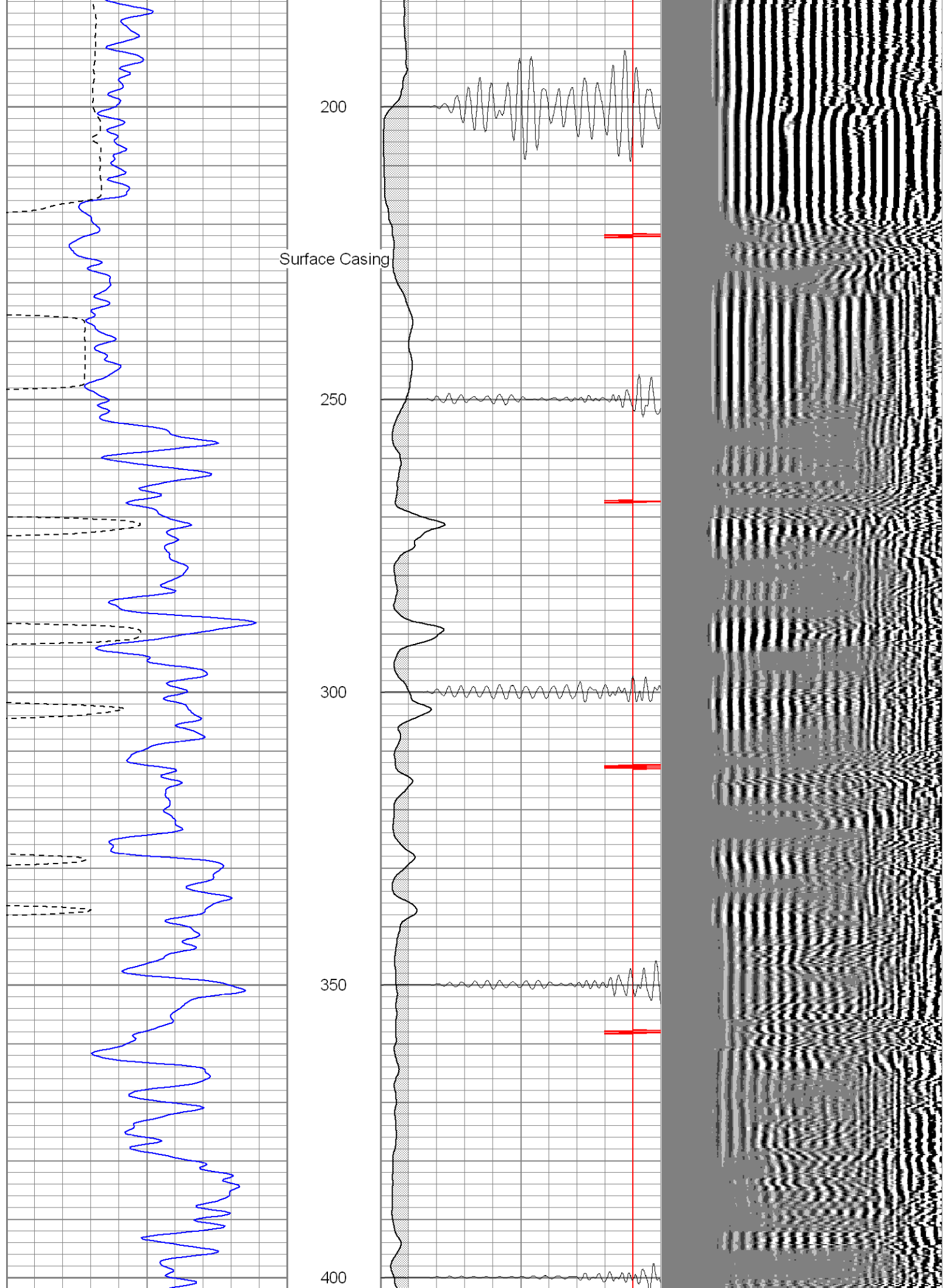
CEMENT BOND GAMMA RAY

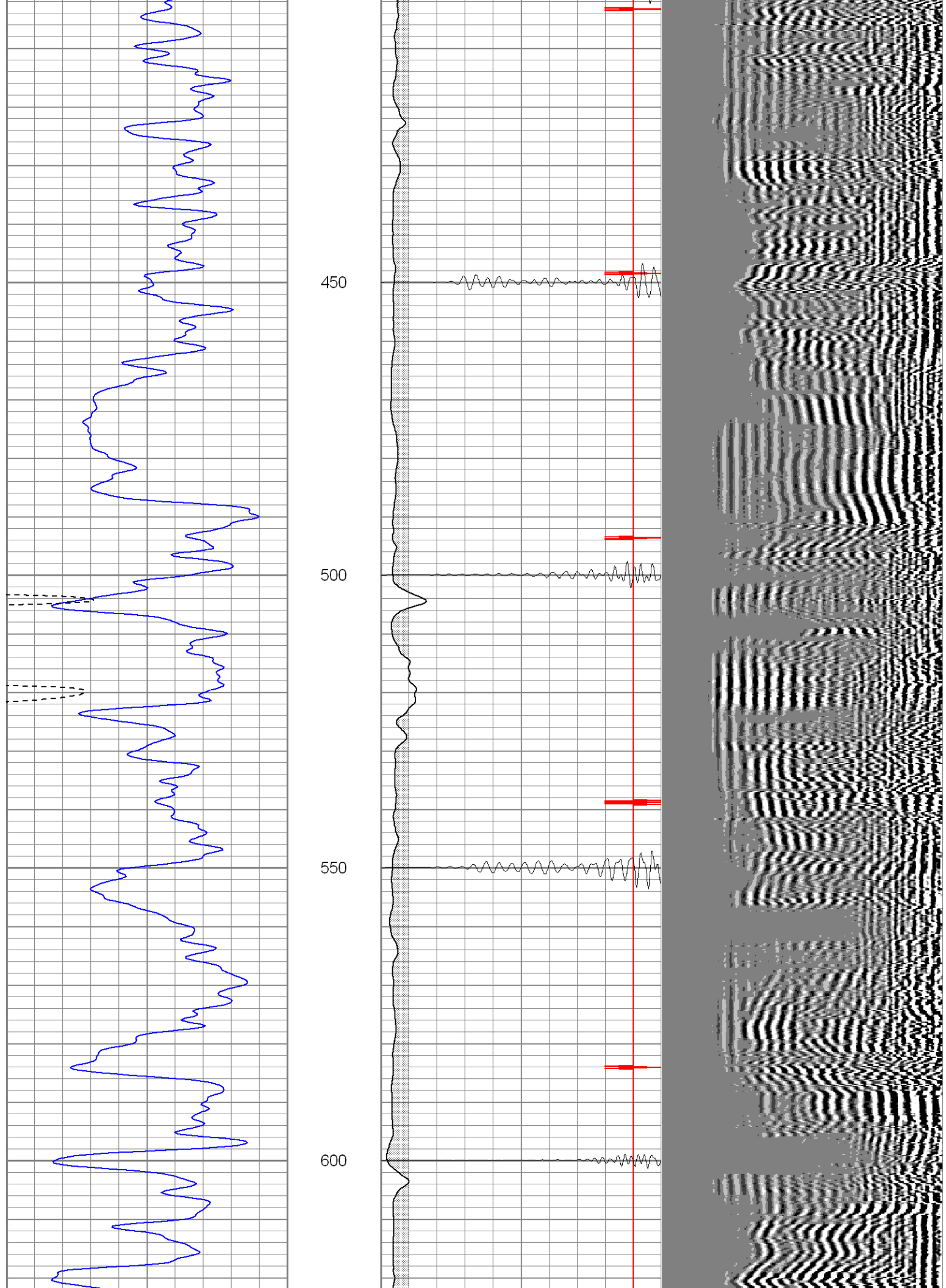
<<< Fold Here >>>
All interpretations are opinions based on inferences from electrical or other measurements and we cannot and do not guarantee the accuracy or correctness of any interpretation, and we shall not, except in the case of gross or willful negligence on our part, be liable or responsible for any loss, costs, damages, or expenses incurred or sustained by anyone resulting from any interpretation made by any of our officers, agents or employees. These interpretations are also subject to our general terms and conditions set out in our current Price Schedule.
Comments
Three Miles West Of Weston Turn Left, At Y Stay Left On Ceruila Canyon, At Windmill Stay Left, First Location.

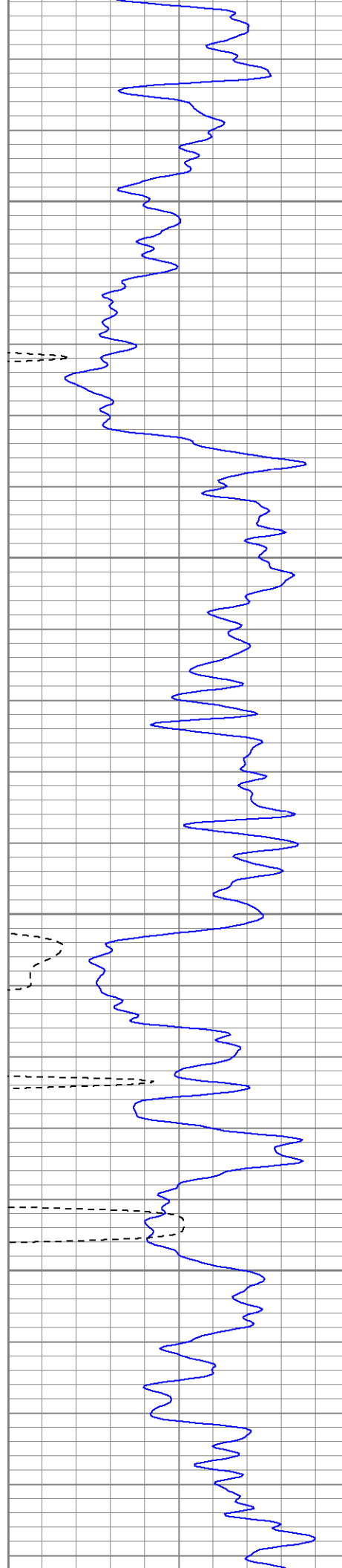
Main Pass

0	GR (GAPI)	200	0	AMP3 (mV)	100	200	Variable Density	1200
400	TT3 (usec)	200	18	CCL	-2			
			200	CBL5	1200			







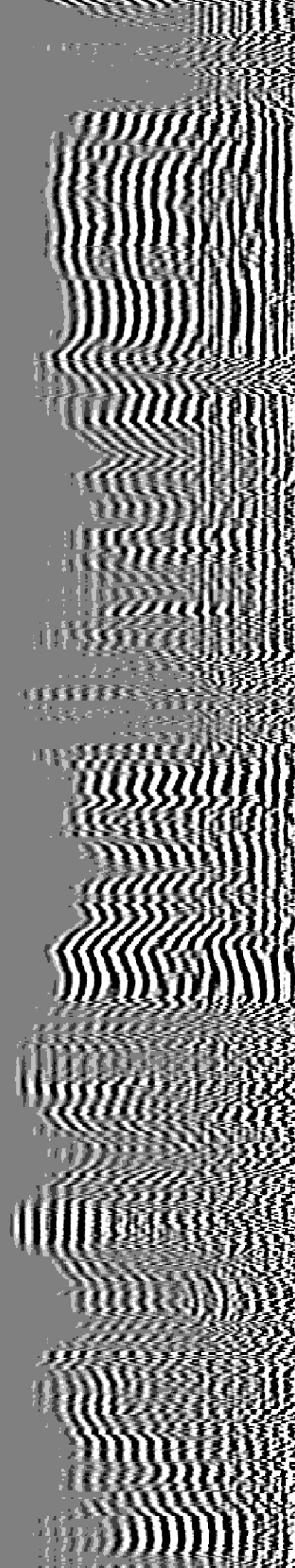


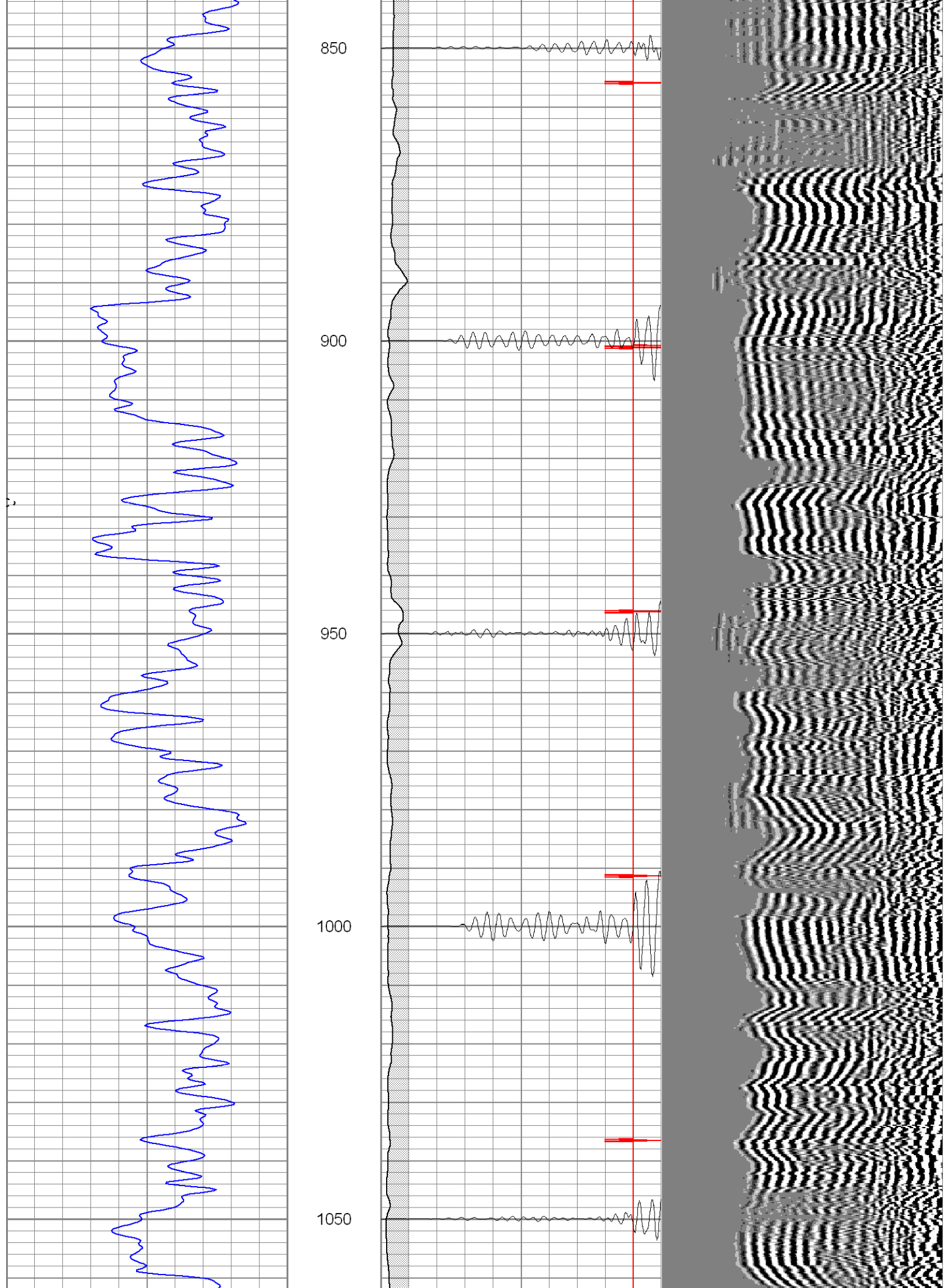
650

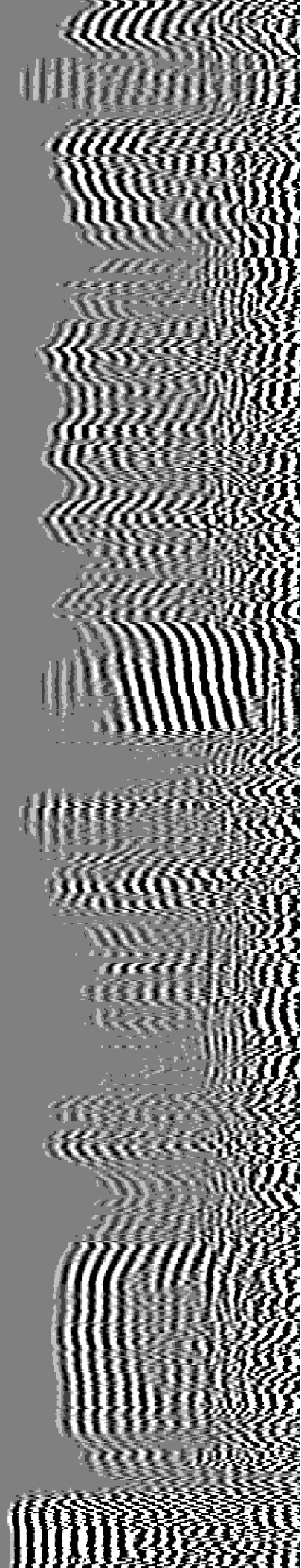
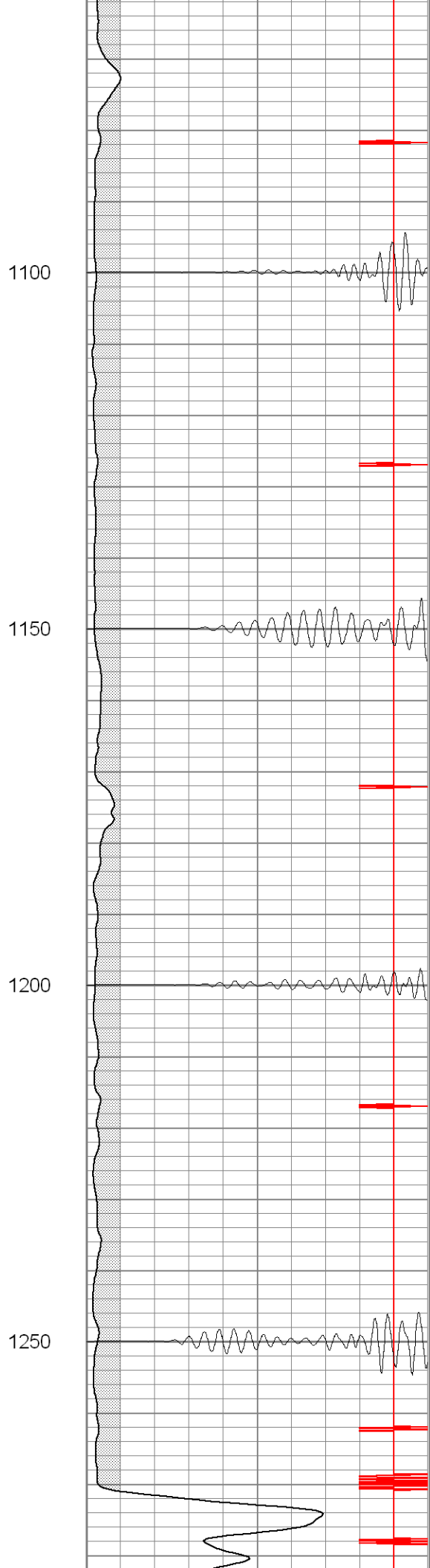
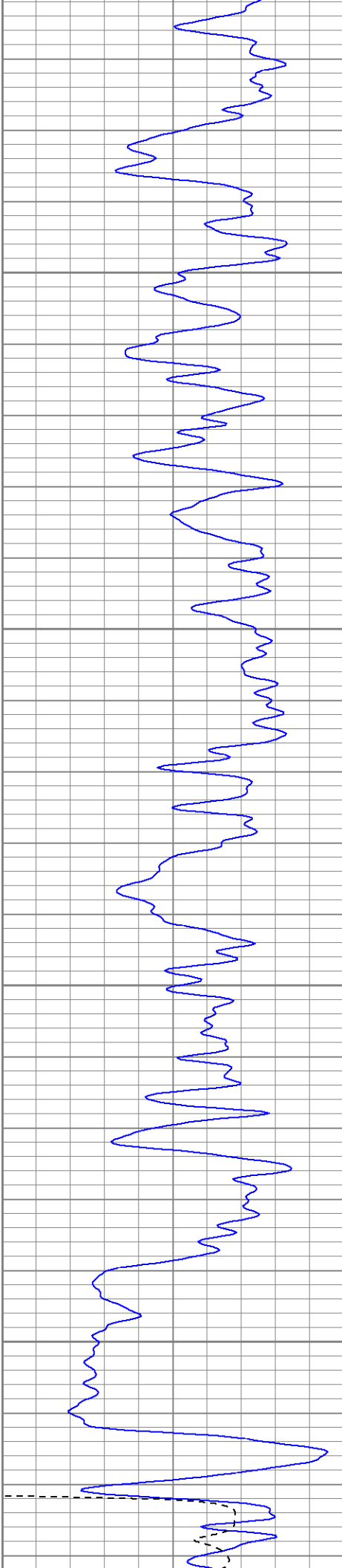
700

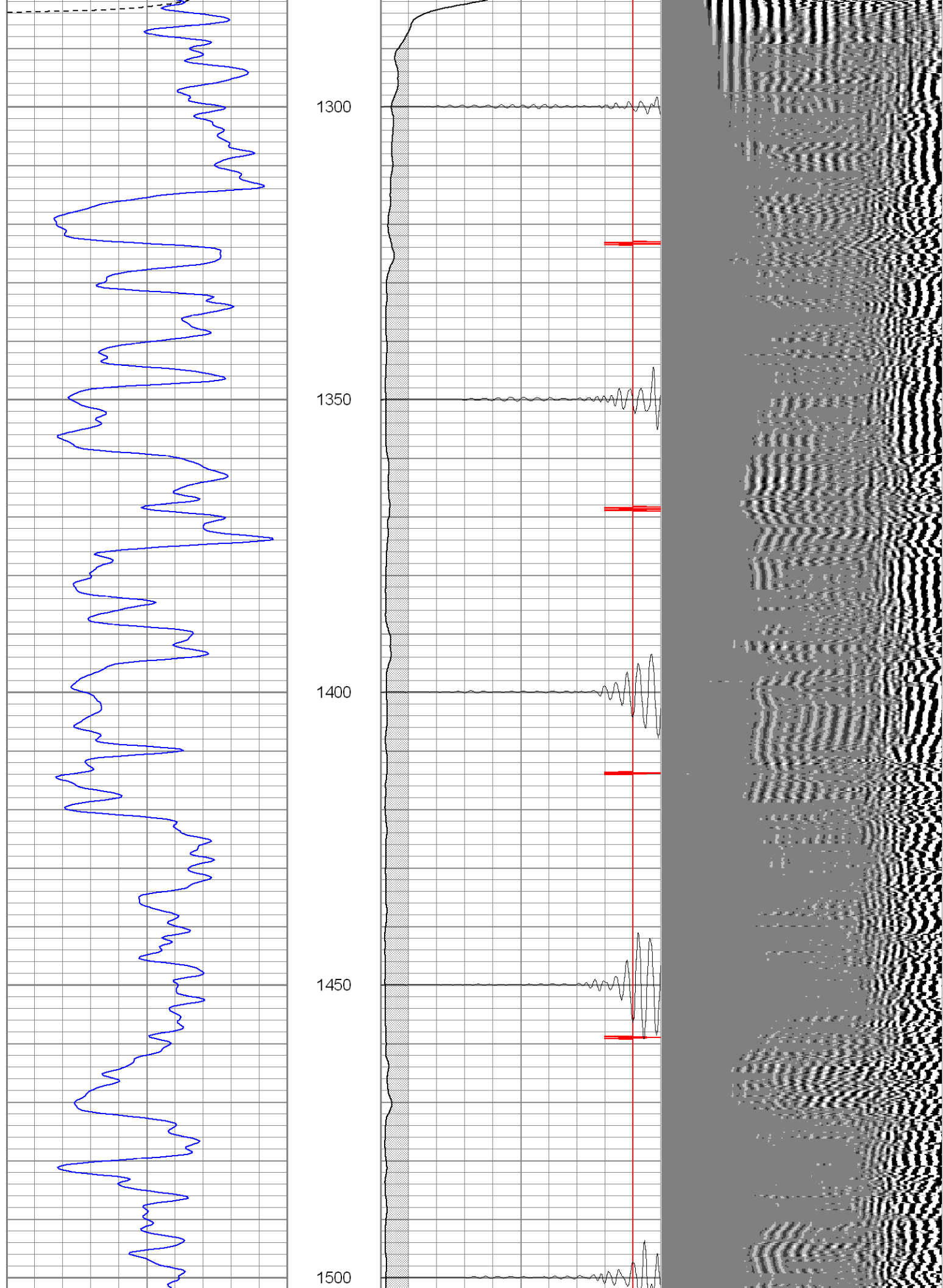
750

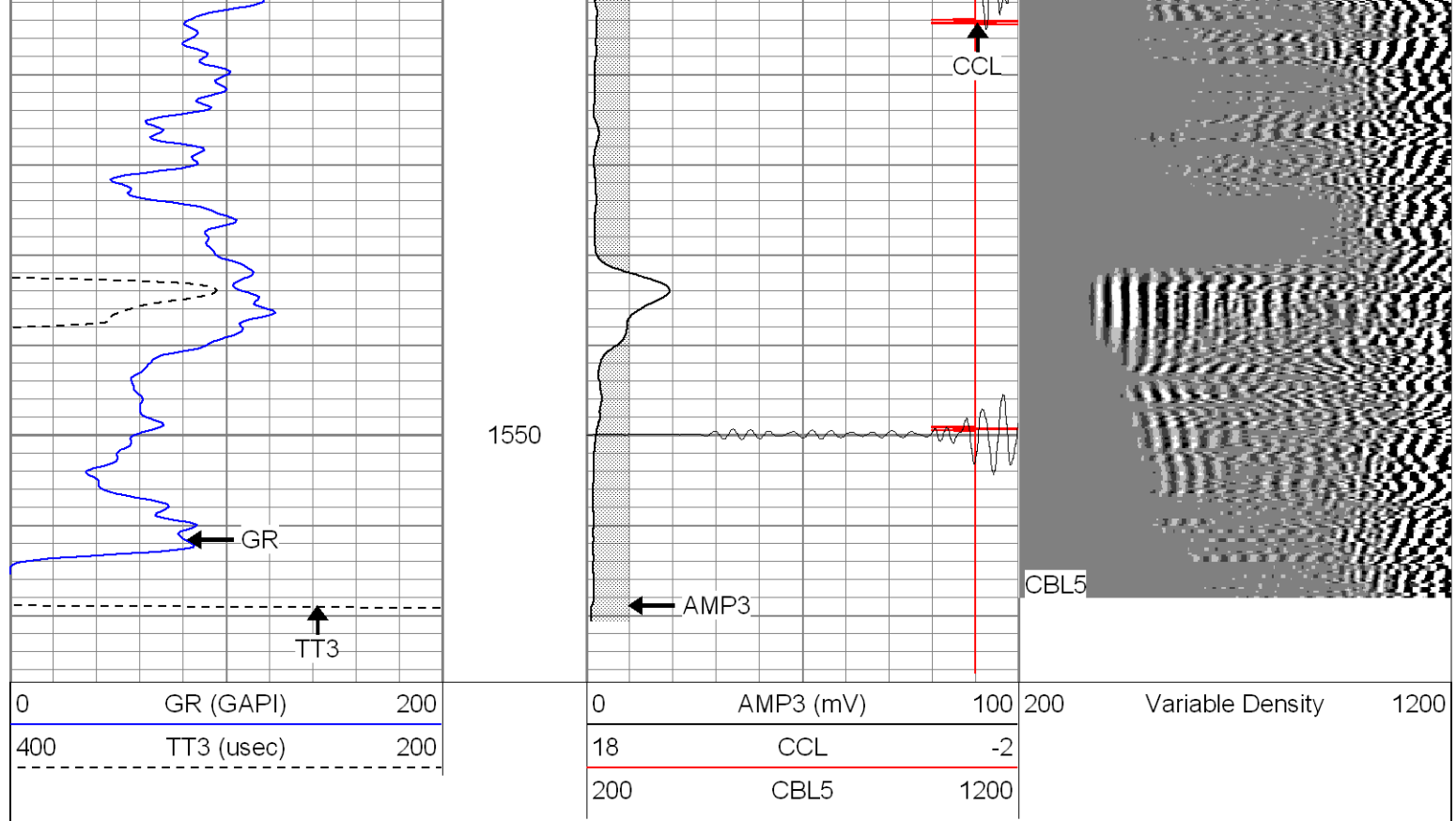
800







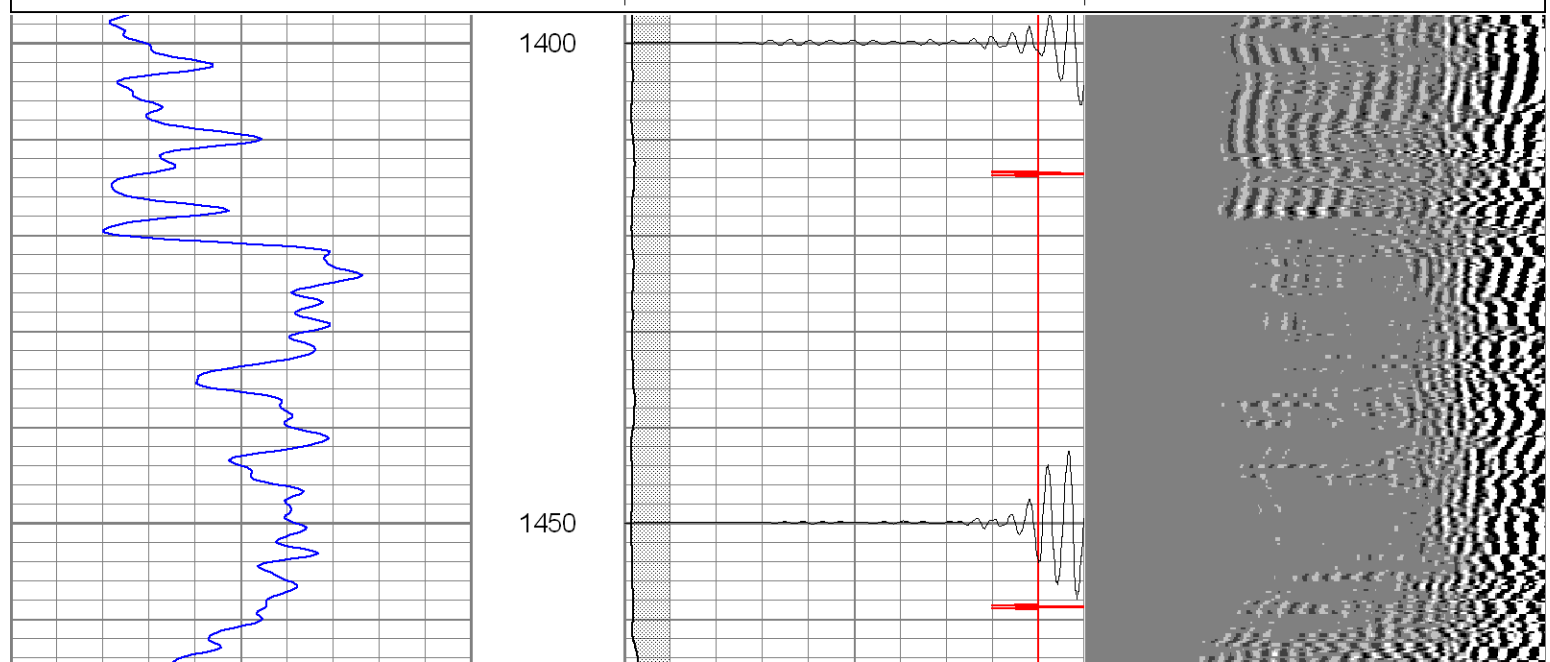
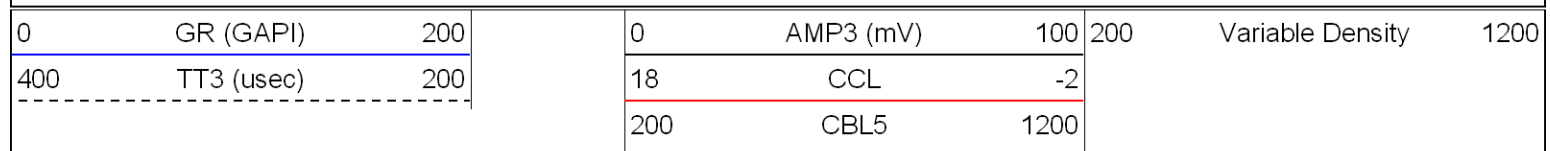


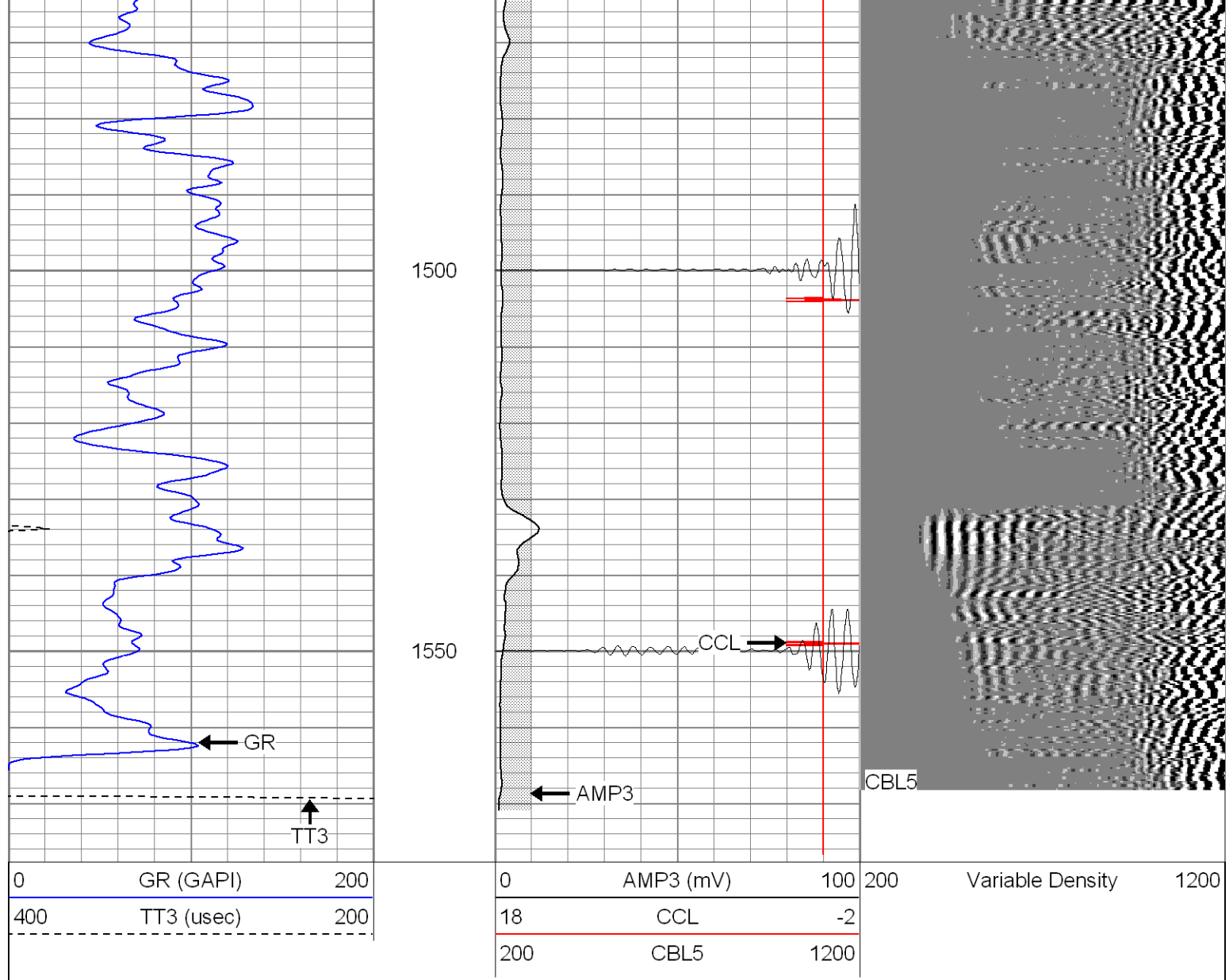


Patterson

Repeat Section

Database File: ge31-08b4606.db
 Dataset Pathname: pass1
 Presentation Format: cblrt
 Dataset Creation: Thu Apr 06 09:27:27 2006 by Log Warrior 7.0 STD Cas
 Charted by: Depth in Feet scaled 1:240





Cement Bond Log Calibration Report

Serial Number:	Titan5		
Tool Model:	2		
Performed:	Thu Apr 06 09:23:26 2006		
Depth:	295.435	ft	
Casing Diameter:	5.5	in	
	3' Spacing	5' Spacing	
Signal Zero:	0	0	mV
Calibrated Amplitude:	85	85	mV
Reading at Signal Zero:	-0.02	0.00878906	V
Reading in Free Pipe:	1.6	0.515479	V
Gain:	52.4691	167.756	
Offset:	1.04938	-1.47441	

Gamma Ray Calibration Report

Serial Number:	Titan5	
Tool Model:	T2	
Performed:	Mon Jan 30 08:59:20 2006	
Calibrator Value:	1.0	GAPI

Background Reading:

0.0

cps

Calibrator Reading:

1.0

cps

Sensitivity:

1.2000

GAPI/cps