

**Patterson**

**CEMENT BOND  
GAMMA RAY**

Company Pioneer Natural Resources  
Well Le Mans 44-11 Tr  
Field Purgatorie River  
County Las Animas  
State CO

Company Pioneer Natural Resources  
Well Le Mans 44-11 Tr  
Field Purgatorie River  
County Las Animas  
State CO

Location: API # : 05 071 008643 00

483' FSL & 211' FEL

SEC 11 TWP 33S RGE 67W

Permanent Datum Ground Level Elevation 7573'  
Log Measured From Kelly Bushing 4' Above G.L.  
Drilling Measured From Kelly Bushing

Other Services  
DEVI SUR/  
TEMP

Elevation

K.B. 7577'  
D.F. -----  
G.L. 7573'

Date

12/27/05

Run Number

one

Depth Driller

1385'

Depth Logger

1361'

Bottom Logged Interval

1357'

Top Log Interval

Surf.

Open Hole Size

7 7/8"

Type Fluid

water

Density / Viscosity

///

Max. Recorded Temp.

99F

Estimated Cement Top

Surf.

Time Well Ready

ROA

Time Logger on Bottom

12:52

Equipment Number

T244

Location

Trinidad

Recorded By

Worley

Witnessed By

Run Number

Bit

From

To

Size

Weight

From

To

Casing Record

Size

Wgt/Ft

Top

Bottom

Surface String

8 5/8"

00

378'

Prot. String

5 1/2"

00

NA

Production String

5 1/2"

00

NA

Liner

5 1/2"

00

NA

Run Number

Bit

From

To

Size

Weight

From

To

Casing Record

Size

Wgt/Ft

Top

Bottom

Surface String

8 5/8"

00

378'

Prot. String

5 1/2"

00

NA

Production String

5 1/2"

00

NA

Liner

5 1/2"

00

NA

Run Number

Bit

From

To

Size

Weight

From

To

Casing Record

Size

Wgt/Ft

Top

Bottom

Surface String

8 5/8"

00

378'

Prot. String

5 1/2"

00

NA

Production String

5 1/2"

00

NA

Liner

5 1/2"

00

NA

Run Number

Bit

From

To

Size

Weight

From

To

Casing Record

Size

Wgt/Ft

Top

Bottom

Surface String

8 5/8"

00

378'

Prot. String

5 1/2"

00

NA

Production String

5 1/2"

00

NA

Liner

5 1/2"

00

NA

Run Number

Bit

From

To

Size

Weight

From

To

Casing Record

Size

Wgt/Ft

Top

Bottom

Surface String

8 5/8"

00

378'

Prot. String

5 1/2"

00

NA

Production String

5 1/2"

00

NA

Liner

5 1/2"

00

NA

Run Number

Bit

From

To

Size

Weight

From

To

Casing Record

Size

Wgt/Ft

Top

Bottom

Surface String

8 5/8"

00

378'

Prot. String

5 1/2"

00

NA

Production String

5 1/2"

00

NA

Liner

5 1/2"

00

NA

Run Number

Bit

From

To

Size

Weight

From

To

Casing Record

Size

Wgt/Ft

Top

Bottom

Surface String

8 5/8"

00

378'

Prot. String

5 1/2"

00

NA

Production String

5 1/2"

00

NA

Liner

5 1/2"

00

NA

Run Number

Bit

From

To

Size

Weight

From

To

Casing Record

Size

Wgt/Ft

Top

Bottom

Surface String

8 5/8"

00

378'

Prot. String

5 1/2"

00

NA

Production String

5 1/2"

00

NA

Liner

5 1/2"

00

NA

Run Number

Bit

From

To

Size

Weight

From

To

Casing Record

Size

Wgt/Ft

Top

Bottom

Surface String

8 5/8"

00

378'

Prot. String

5 1/2"

00

NA

Production String

5 1/2"

00

NA

Liner

5 1/2"

00

NA

Run Number

Bit

From

To

Size

Weight

From

To

Casing Record

Size

Wgt/Ft

Top

Bottom

Surface String

8 5/8"

00

378'

Prot. String

5 1/2"

00

NA

Production String

5 1/2"

00

NA

Liner

5 1/2"

00

NA

Run Number

Bit

From

To

Size

Weight

From

To

Casing Record

Size

Wgt/Ft

Top

Bottom

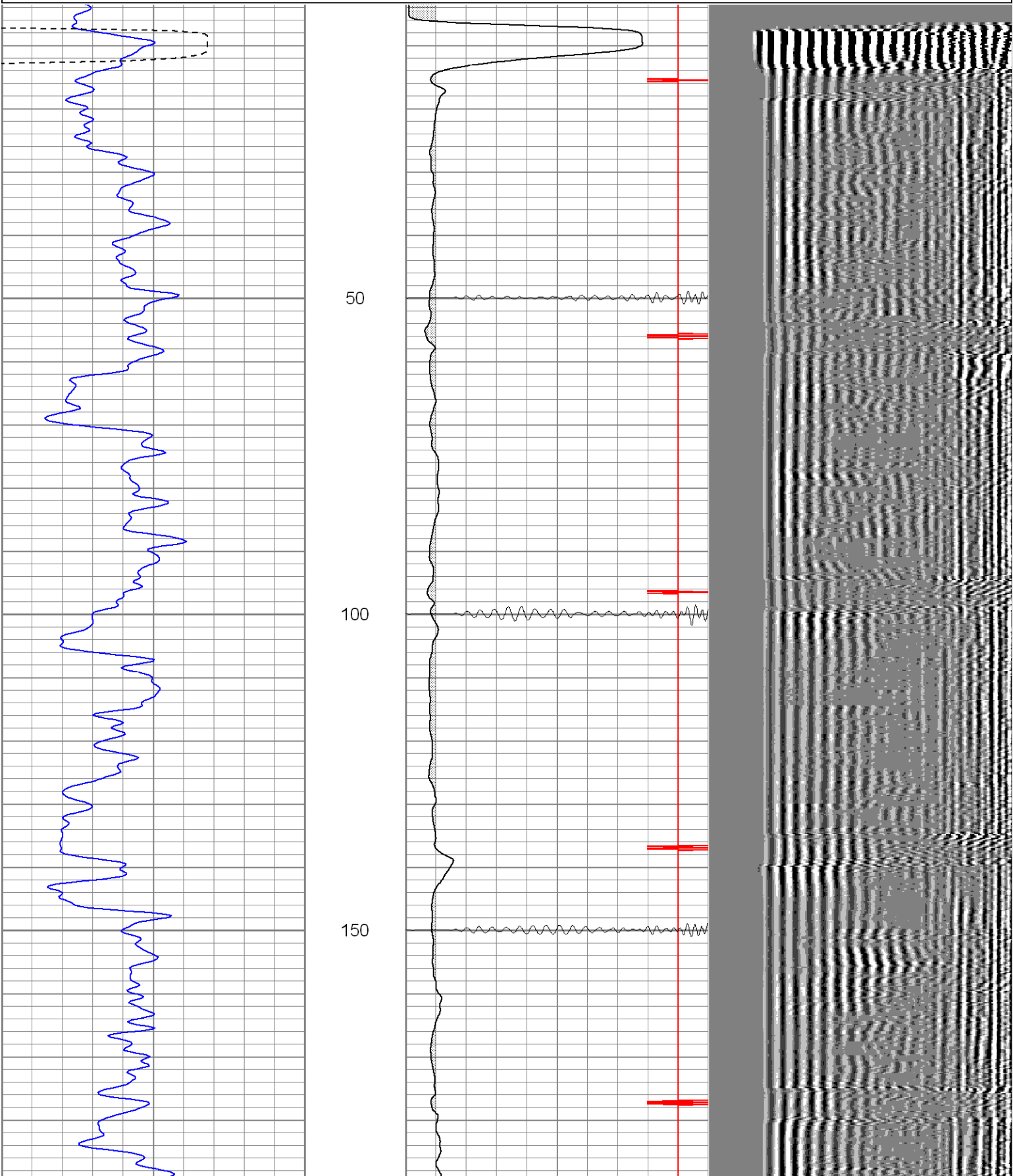
Surface String

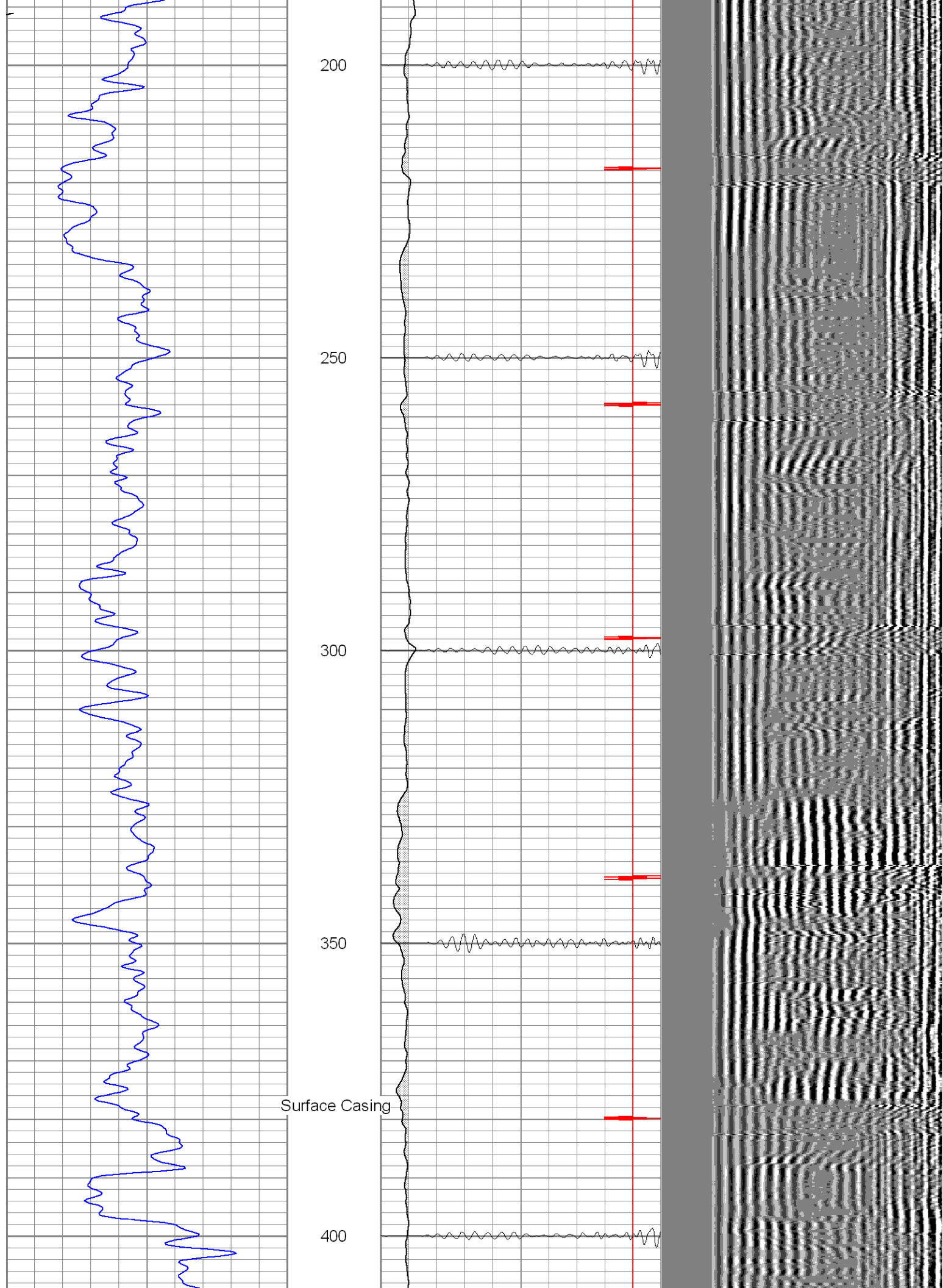
8 5/8"

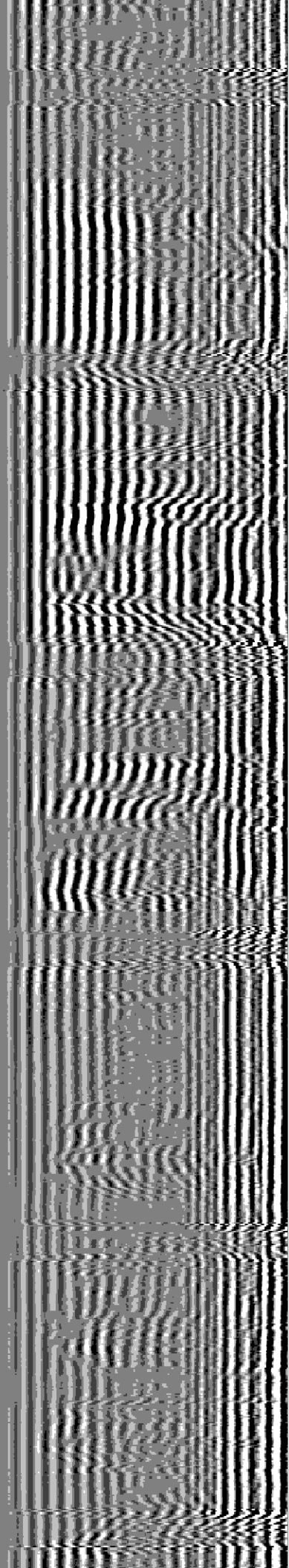
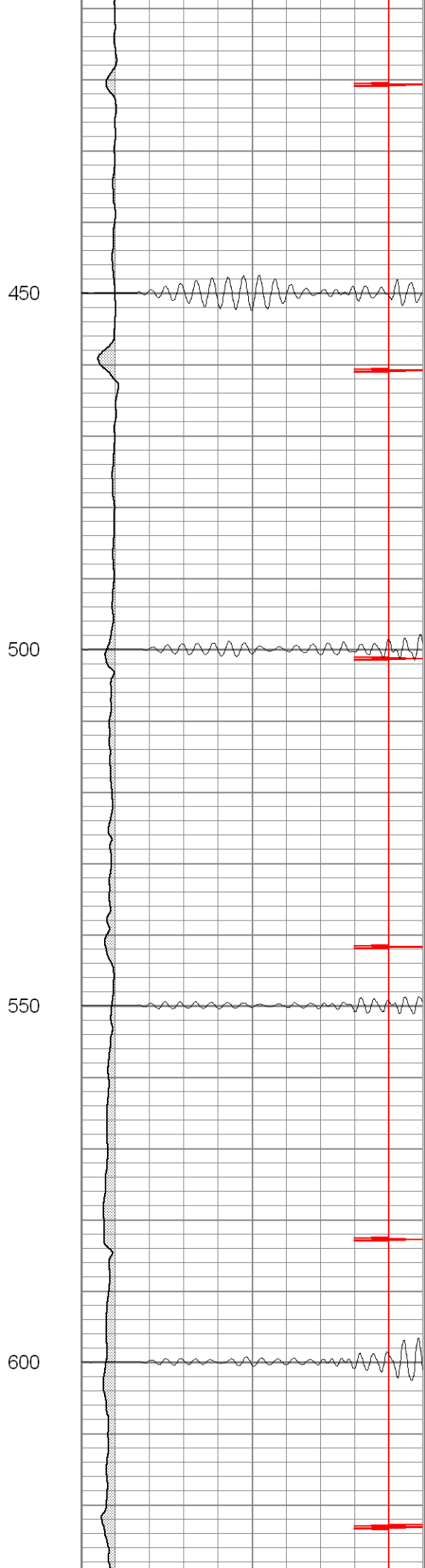
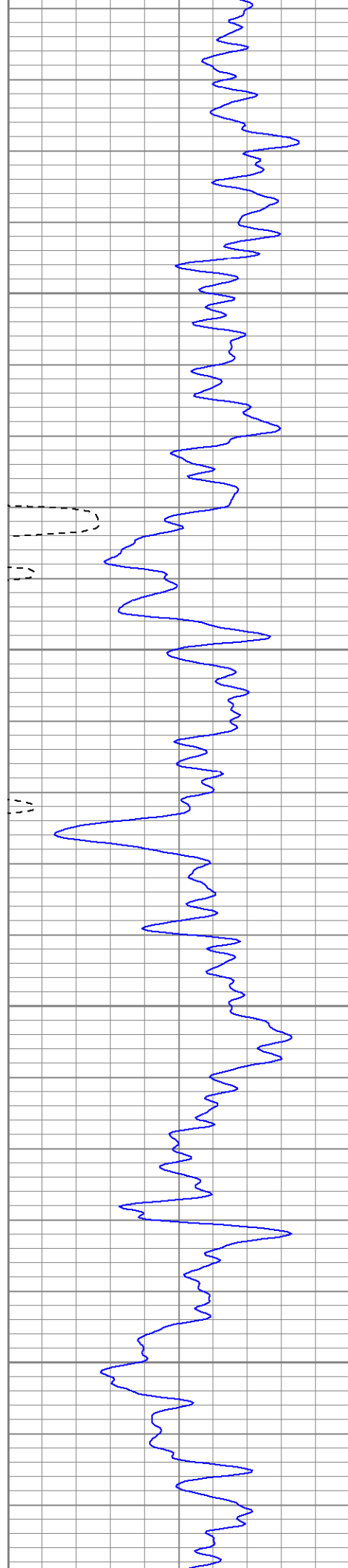
00

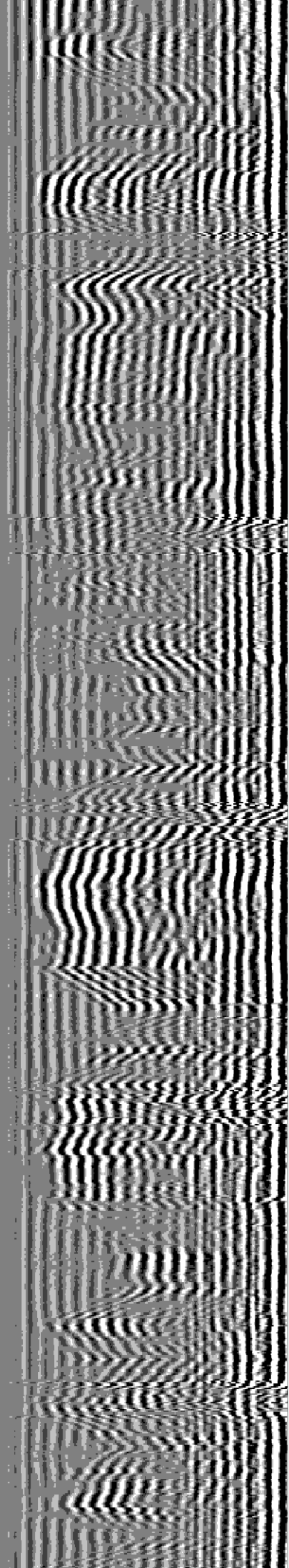
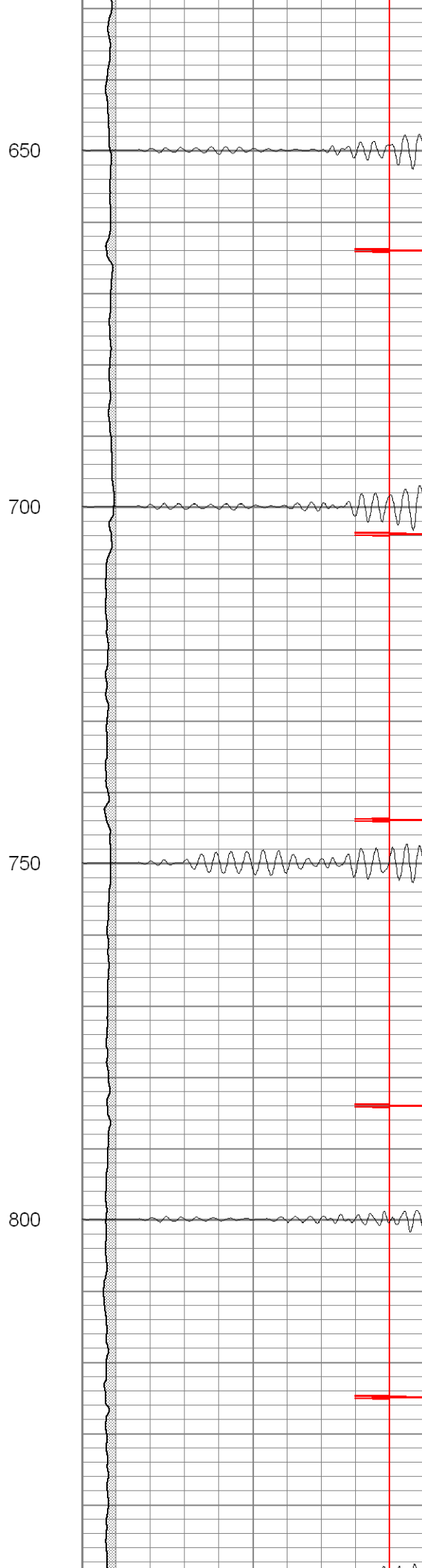
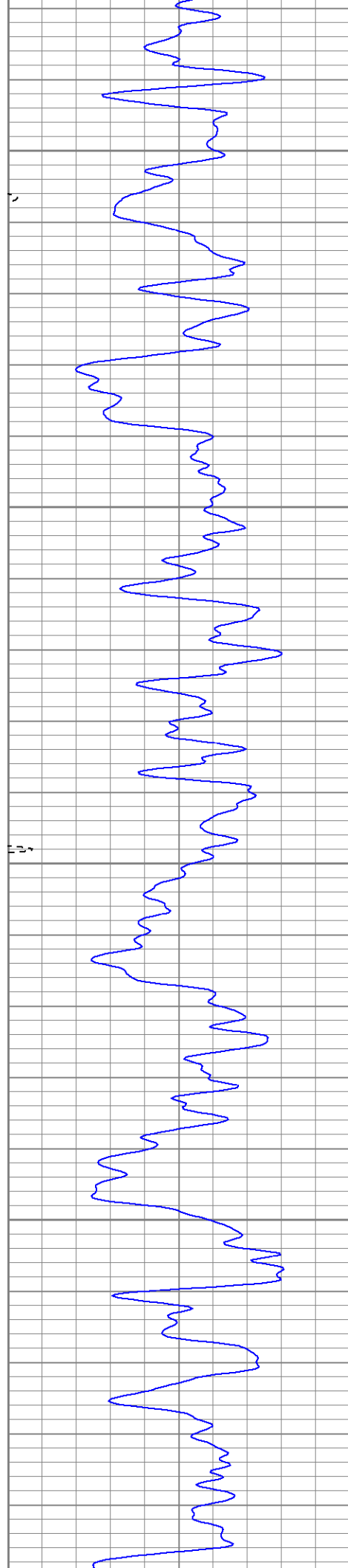
Database File: lemanstr122705b.db  
Dataset Pathname: pass2  
Presentation Format: cblrt  
Dataset Creation: Tue Dec 27 12:57:47 2005 by Log Warrior 7.0 STD Cas  
Charted by: Depth in Feet scaled 1:240

0	GR (GAPI)	200	0	AMP3 (mV)	100	200	Variable Density	1200
400	TT3 (usec)	200	18	CCL	-2			
			200	CBL5	1200			

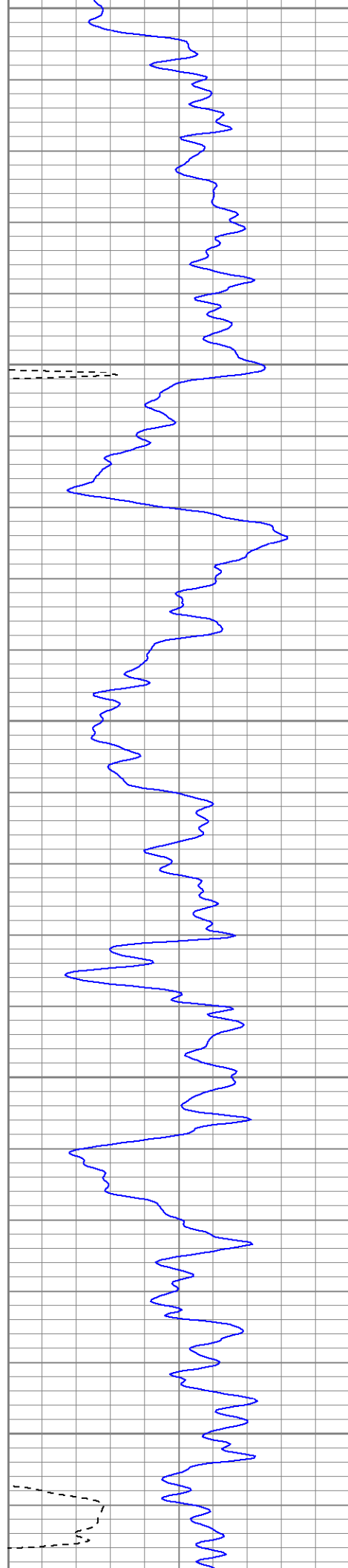




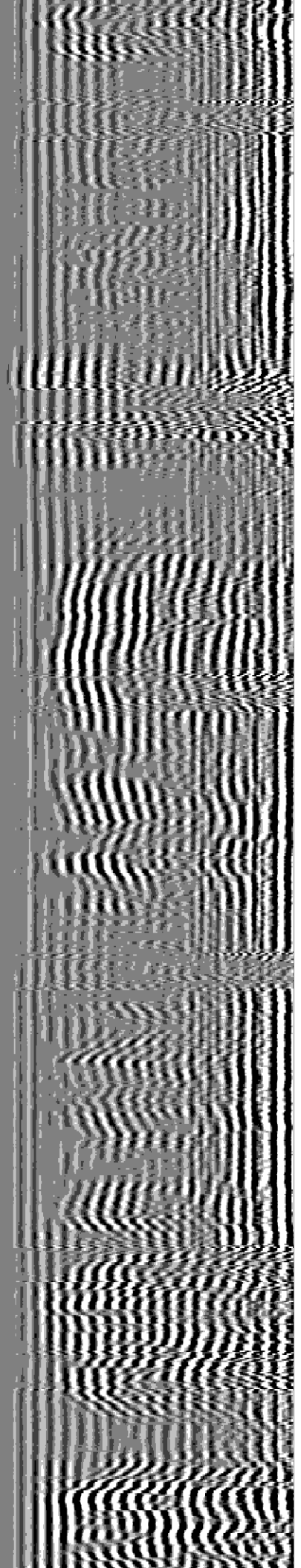


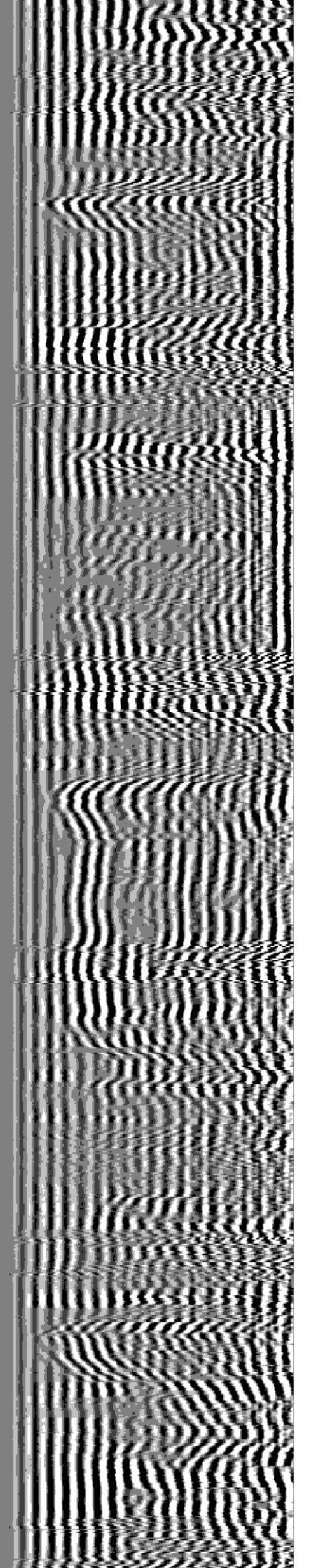
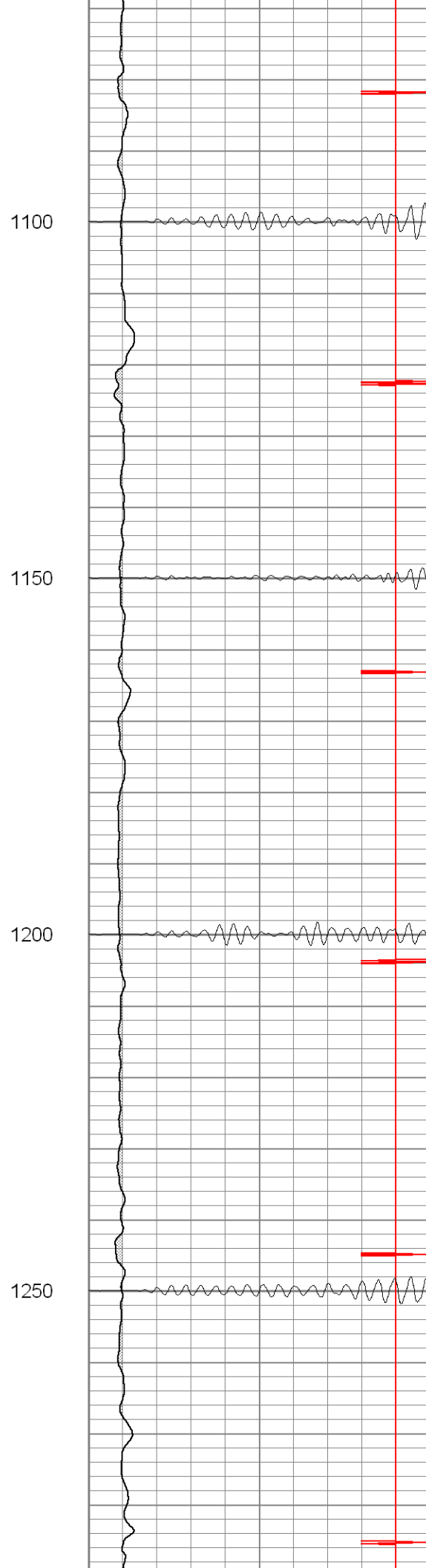
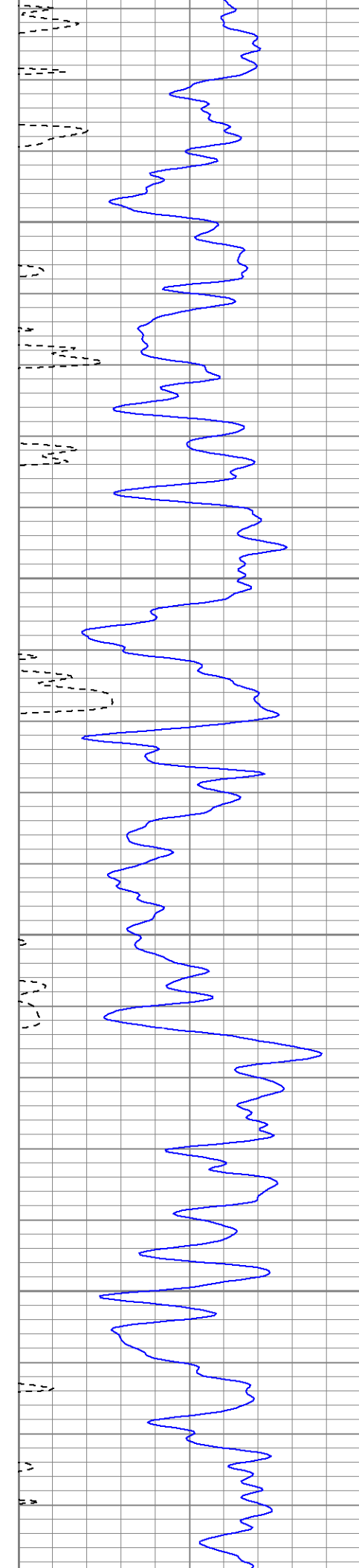


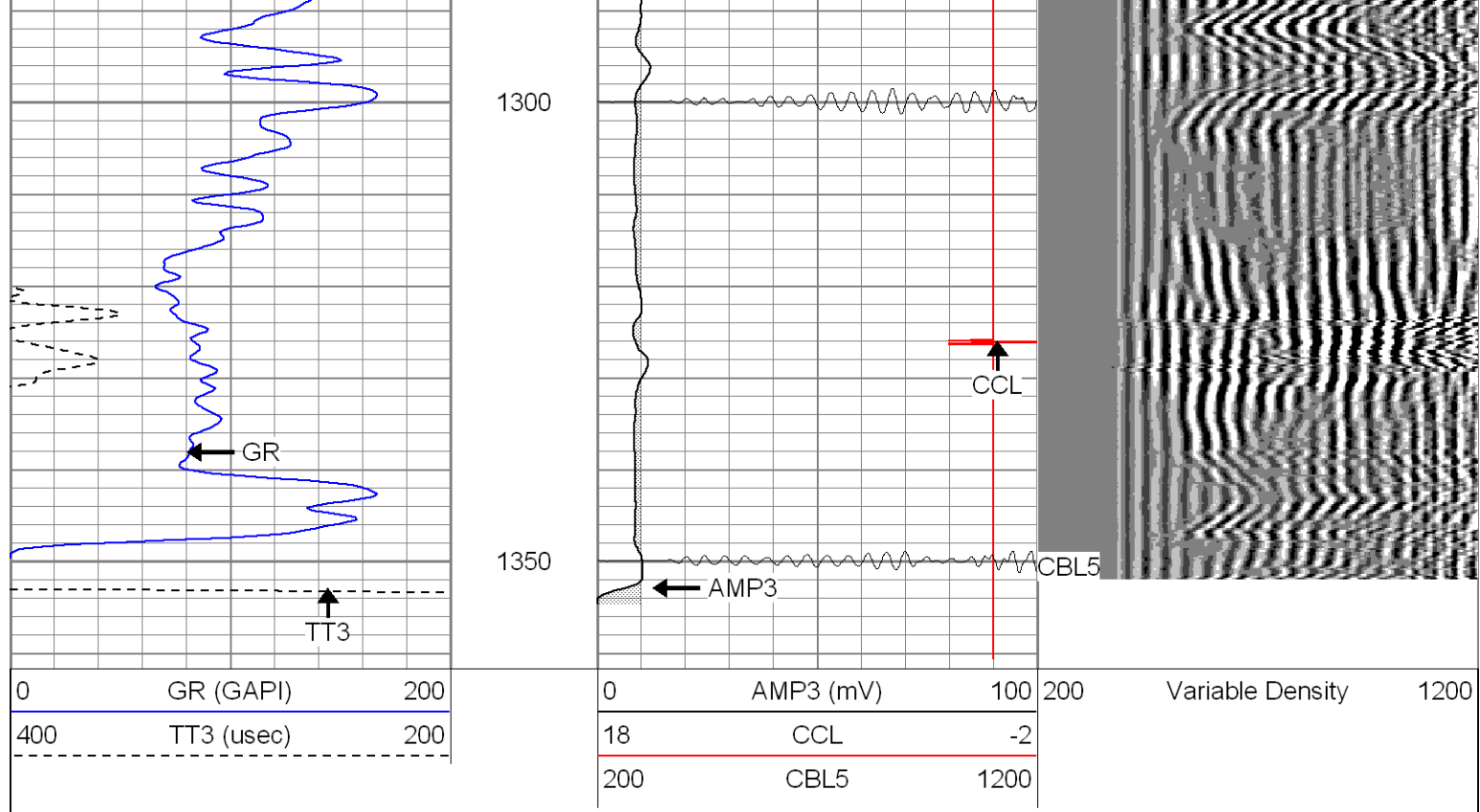




850  
900  
950  
1000  
1050



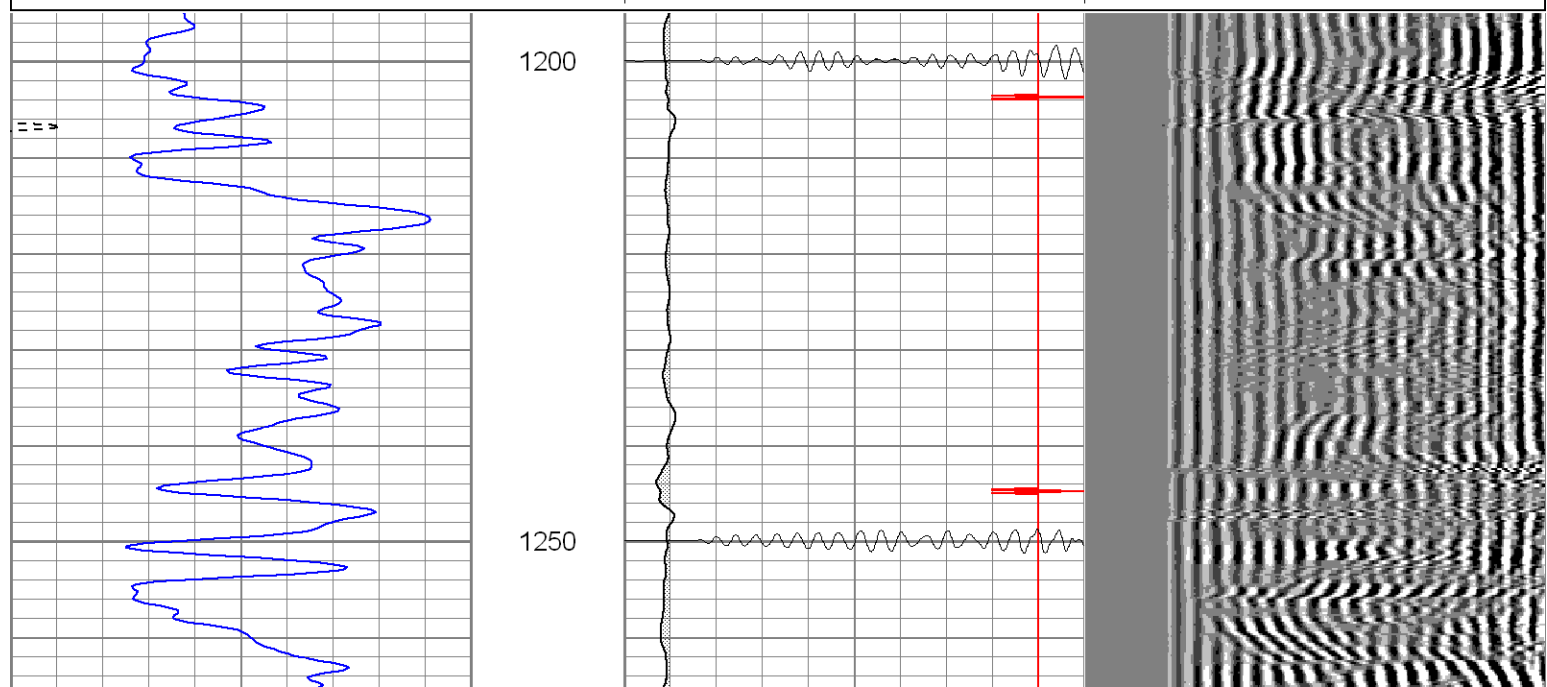
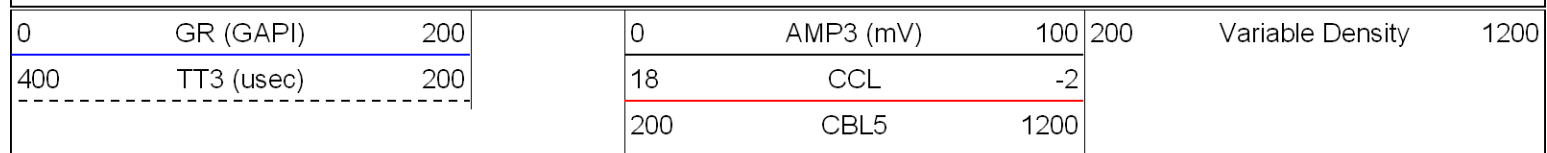




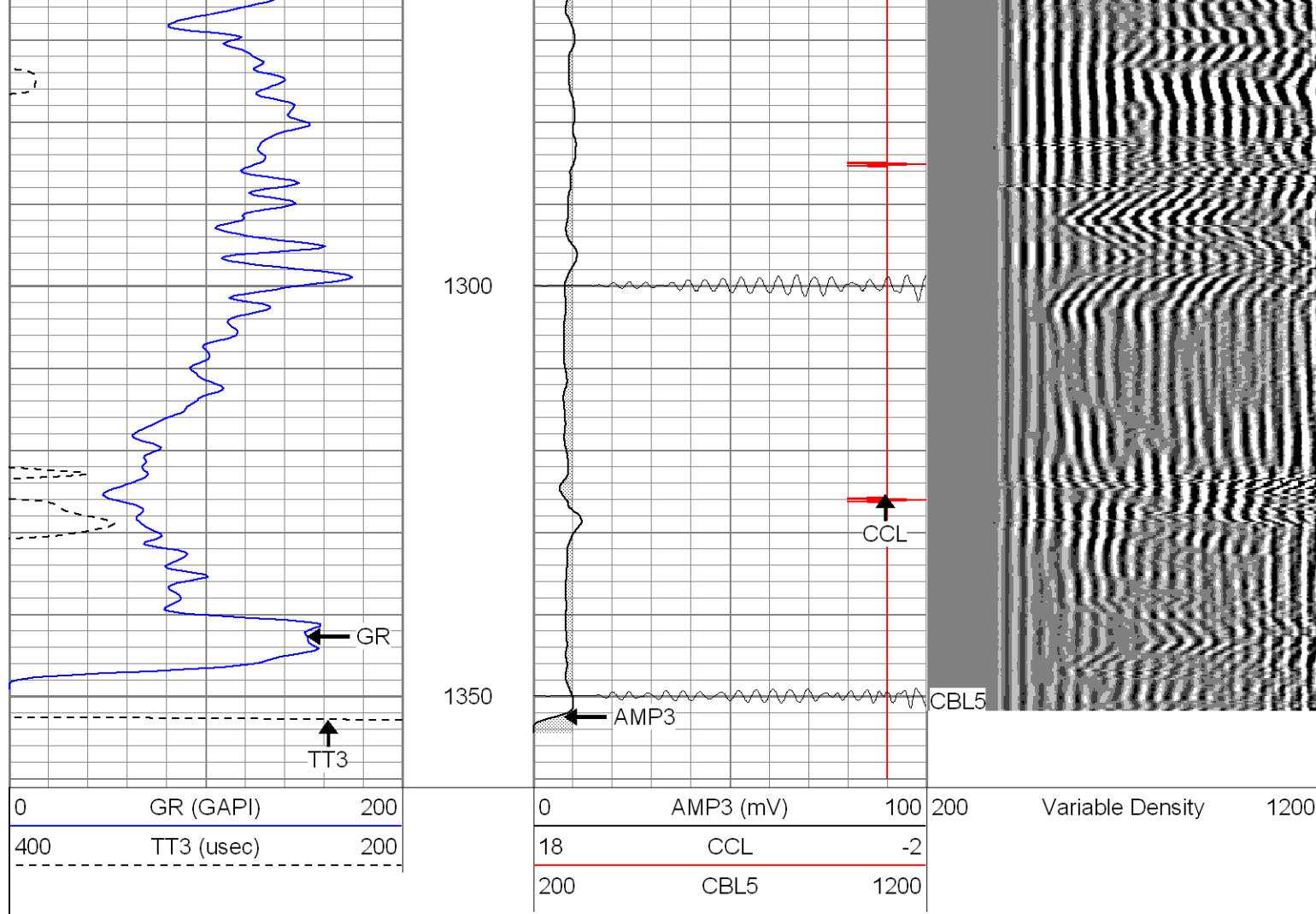
**Patterson**

# Repeat Section

Database File: lemanstr122705b.db  
Dataset Pathname: pass1.1  
Presentation Format: cblrt  
Dataset Creation: Tue Dec 27 12:55:58 2005 by Calc Warrior 7.0 STD Cas  
Charted by: Depth in Feet scaled 1:240







### Cement Bond Log Calibration Report

Serial Number:	Titan5		
Tool Model:	2		
Performed:	Tue Dec 27 08:52:57 2005		
Depth:	0	ft	
Casing Diameter:	0	in	
	3' Spacing	5' Spacing	
Signal Zero:	0	0	mV
Calibrated Amplitude:	85	85	mV
Reading at Signal Zero:	0	0	V
Reading in Free Pipe:	1	0.9	V
Gain:	85	94.4444	
Offset:	0	0	

### Gamma Ray Calibration Report

Serial Number:	Titan5	
Tool Model:	T2	
Performed:	Thu Dec 15 12:05:30 2005	
Calibrator Value:	1.0	GAPI
Background Reading:	0.0	cps
Calibrator Reading:	1.0	cps
Sensitivity:	1.2000	GAPI/cps

