

BRAN-DEX		GAMMA RAY - C.C.L. CEMENT BOND - V.D.L. SECTOR MAP LOG	
WIRELINE SERVICES			
Company: KERR MCGEE OIL&GAS ONSHORE LP		Well: LDS#39-24	
Field: WATTENBERG		County: WELD	
Location: SHL 6637FSL&2609FEL BHL 1443FSL&2044FEL(EST.)		State: COLORADO	
Permanent Datum: SEC 24 T14P 3N R3E 69W		Elevation: 4900	
Log Measured From: K.B.		G.L. 4914	
Drilling Measured From: K.B.		O.F. 4913 G.L. 4900	
Date: NOV 27 2006		Run Number: ONE	
Depth Unit: FEET		SUSSEX	
Open Hole: 7458		6400	
Bottom Logged Interval: 7458		6400	
Top Log Interval: 6400		3200	
Open Hole Size: WATER		FULL	
Type Fluid: WATER		254	
Density / Viscosity: Max. Recorded Temp.		Estimated Cement Top	
Time Logged at Bottom		Equipment Number: #429	
Location: STERILINS		Recorded By: GARDNER	
Witnessed By: LEWIS CAMP		Borehole Record From: To	
Run Number: 611		Size: Weight: From: To	
Cement Record: Size: VIBFRT		Top: Bottom:	
Surface String: 4 1/2		Liner:	

<<< Fold Here >>>

All interpretations are opinions based on inferences from electrical or other measurements and we cannot and do not guarantee the accuracy or correctness of any interpretation, and we shall not, except in the case of gross or willful negligence on our part, be liable or responsible for any loss, costs, damages, or expenses incurred or sustained by anyone resulting from any interpretation made by any of our officers, agents or employees. These interpretations are also subject to our general terms and conditions set out in our current Price Schedule.

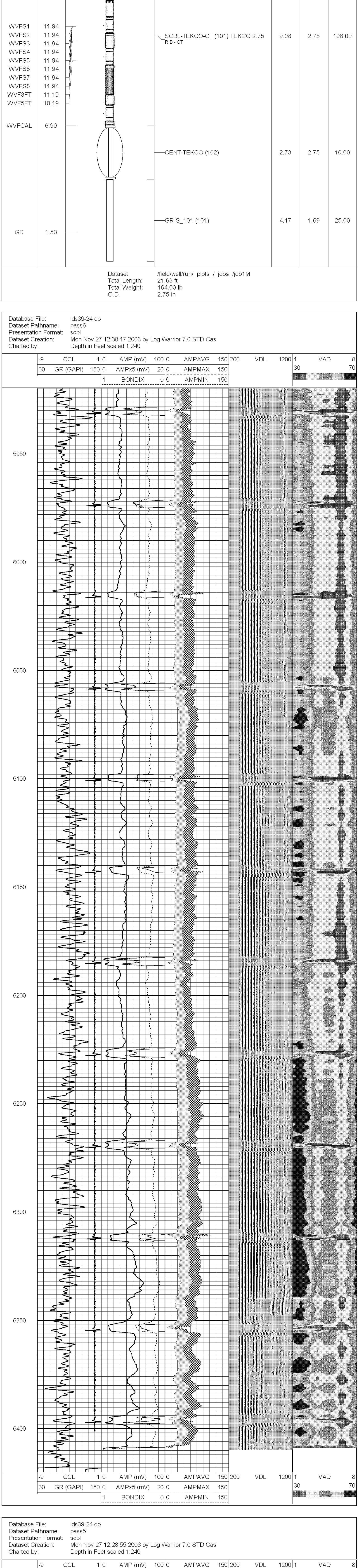
Comments

Comments

CCL		18.71	CCL-S_101 (101)	2.92	1.69	11.00
WVFS1		11.94	SCBL-TEKCO-CT (101) TEKCO 2.75 RIB-CT	9.08	2.75	108.00
WVFS2		11.94				
WVFS3		11.94				
WVFS4		11.94				
WVFS5		11.94				
WVFS6		11.94				
WVFS7		11.94				
WVFS8		11.94				
WVF3FT		11.19				
WVF5FT		10.19				
WVFCAL		6.90	CENT-TEKCO (102)	2.73	2.75	10.00
GR		1.50	GR-S_101 (101)	4.17	1.69	25.00

Dataset: /field/well/run/_plots/_jobs/_job1M
Total Length: 21.63 ft
Total Weight: 164.00 lb
O.D: 2.75 in

Database File: lds39-24.db
Dataset Pathname: pass6
Presentation Format: scbl
Dataset Creation: Mon Nov 27 12:38:17 2006 by Log Warrior 7.0 STD Cas
Charted by: Depth in Feet scaled 1:240



Database File: lds39-24.db
Dataset Pathname: pass5
Presentation Format: scbl
Dataset Creation: Mon Nov 27 12:28:55 2006 by Log Warrior 7.0 STD Cas
Charted by: Depth in Feet scaled 1:240

