



PHOENIX SURVEYS, INC.

DUAL INDUCTION
GUARD LOG
GAMMA RAY

Company Great Western Oil & Gas LLC

Well Peterson 30-41

Field Wattenberg

County Weld

State/Province Colorado

Location

748 FNL & 558 FEL

Sec 30, Twp - 5N, Rge - 63W

CL NENE

Elevation 4533

Permanent Datum KB

Log Measured From KB

Drilling Measured From KB

Date March 12, 2008

Run Number 1

Depth Driller 6723

Depth Logger 6723

Tool Joint Interval 6723

Casing Driller 545

Casing Logger 545

RI Size 7-7/8"

Type Fluid in Hole Chem Gel

pH / Fluid Loss 9.6 / 9.0

Flowline 8.6 / 9.0

Source of Sample 3.45 @ 19' F

Run @ Mass Temp 3.20 @ 19' F

Run @ Mass Temp 3.20 @ 19' F

Source of Refr / Pnc Messed Calc

Run @ BHT 1.40 @ 195' F

Time Circulation Stopped 0000

Time Logger on Bottom 0000

Maximum Recorded Temperature 195' F

Equipment Number 4000

Location Brighton, CO

Recorded By Shaun Schuman

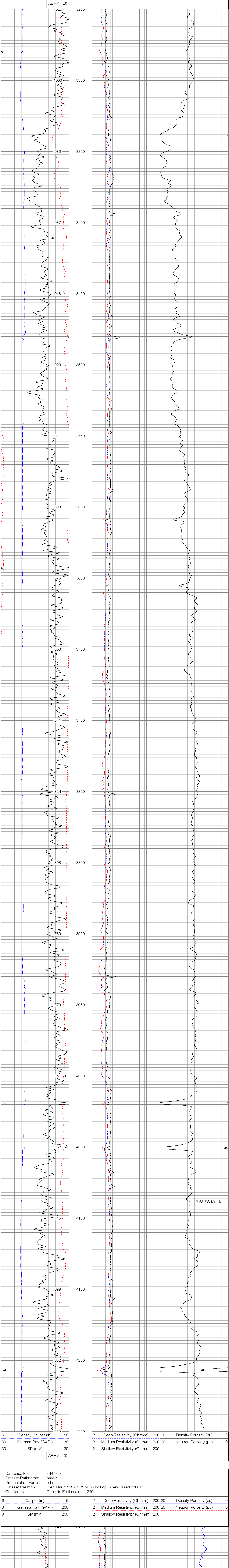
Revised By Robin Strickman

All interpretations are opinions based on inferences from electrical or other measurements and we cannot and do not guarantee the accuracy or correctness of any interpretation, and we shall not, except in the case of gross or willful negligence on our part, be liable or responsible for any loss, costs, damages, or expenses incurred or sustained by anyone resulting from any interpretation made by any of our officers, agents or employees. These interpretations are also subject to our general terms and conditions set out in our current Price Schedule.

Comments

Annular volume calculated for 4.5" casing
Ensign Drilling Rig 7
Thank you for using Phoenix Surveys.
API #: 05-123-25422-00

Database File: 8447.db
Dataset Pathname: pass3
Presentation Format: pdc
Dataset Creation: Wed Mar 12 08:04:21 2008 by Log Open-Cased 070814
Charted by: Depth in Feet scaled 1:240



Database File: 8447.db
Dataset Pathname: pass3
Presentation Format: pdc
Dataset Creation: Wed Mar 12 08:04:21 2008 by Log Open-Cased 070814
Charted by: Depth in Feet scaled 1:240

