



SUPERIOR
Black Lick, Pa.
Mercer, Pa.
Wooster, Oh.
Cleveland, Ok.
Trinidad, Co.

CEMENT BOND GAMMA RAY LOG

Company XTO Energy, Inc.

Well Apache Canyon 13-12X

Field Purgatoire River

County Las Animas State CO

Location: API # : 05 071 08828 00

2264' FSL & 627' FWL

SEC 13 TWP 34S RGE 68W

Permanent Datum Ground Level Elevation 8394'
Log Measured From Ground Level
Drilling Measured From Ground Level

Elevation
K.B. -----
D.F. -----
G.L. 8394'

Date 10-12-06

Run Number Two

Depth Driller 2400'

Depth Logger 1933'

Bottom Logged Interval 1931'

Top Log Interval 1470'

Open Hole Size 7 7/8"

Type Fluid Water

Density / Viscosity III

Max. Recorded Temp. 110F

Estimated Cement Top ?

Time Well Ready Portable Mast

Time Logger on Bottom 10:00AM

Equipment Number 1875

Location Trinidad

Recorded By E. Ray

Witnessed By Mr. Billy Blatnick

Run Number

Bit From To

Size

Weight From To

Size

Wgt/Ft

Top Bottom

00 216'

00 N/A

51/2"

Production String

Prot. String

Surface String

Casing Record

Liner

8 5/8"

Wgt/Ft

Top Bottom

00 216'

00 N/A

51/2"

Production String

Prot. String

Surface String

Casing Record

Liner

8 5/8"

Wgt/Ft

Top Bottom

00 216'

00 N/A

51/2"

Production String

Prot. String

Surface String

Casing Record

Liner

8 5/8"

Wgt/Ft

Top Bottom

00 216'

00 N/A

51/2"

Production String

Prot. String

Surface String

Casing Record

Liner

8 5/8"

Wgt/Ft

Top Bottom

00 216'

00 N/A

51/2"

Production String

Prot. String

Surface String

Casing Record

Liner

8 5/8"

Wgt/Ft

Top Bottom

00 216'

00 N/A

51/2"

Production String

Prot. String

Surface String

Casing Record

Liner

8 5/8"

Wgt/Ft

Top Bottom

00 216'

00 N/A

51/2"

Production String

Prot. String

Surface String

Casing Record

Liner

8 5/8"

Wgt/Ft

Top Bottom

00 216'

00 N/A

51/2"

Production String

Prot. String

Surface String

Casing Record

Liner

8 5/8"

Wgt/Ft

Top Bottom

00 216'

00 N/A

51/2"

Production String

Prot. String

Surface String

Casing Record

Liner

8 5/8"

Wgt/Ft

Top Bottom

00 216'

00 N/A

51/2"

Production String

Prot. String

Surface String

Casing Record

Liner

8 5/8"

Wgt/Ft

Top Bottom

00 216'

00 N/A

51/2"

Production String

Prot. String

Surface String

Casing Record

Liner

8 5/8"

Wgt/Ft

Top Bottom

00 216'

00 N/A

51/2"

Production String

Prot. String

Surface String

Casing Record

Liner

8 5/8"

Wgt/Ft

Top Bottom

00 216'

00 N/A

51/2"

Production String

Prot. String

Surface String

Casing Record

Liner

8 5/8"

Wgt/Ft

Top Bottom

00 216'

00 N/A

51/2"

Production String

Prot. String

Surface String

Casing Record

Liner

8 5/8"

Wgt/Ft

Top Bottom

00 216'

00 N/A

51/2"

Production String

Prot. String

Surface String

Casing Record

Liner

8 5/8"

Wgt/Ft

Top Bottom

00 216'

00 N/A

51/2"

Production String

Prot. String

Surface String

Casing Record

Liner

8 5/8"

Wgt/Ft

Top Bottom

00 216'

00 N/A

51/2"

Production String

Prot. String

Surface String

Casing Record

Liner

8 5/8"

Wgt/Ft

Top Bottom

00 216'

00 N/A

51/2"

Production String

Prot. String

Surface String

Casing Record

Liner

8 5/8"

Wgt/Ft

Top Bottom

00 216'

00 N/A

51/2"

Production String

Prot. String

Surface String

Casing Record

Liner

8 5/8"

Wgt/Ft

Top Bottom

00 216'

00 N/A

51/2"

Production String

Prot. String

Surface String

Casing Record

Liner

8 5/8"

Wgt/Ft

Top Bottom

00 216'

00 N/A

51/2"

Production String

Prot. String

Surface String

Casing Record

Liner

8 5/8"

Wgt/Ft

Top Bottom

00 216'

00 N/A

51/2"

Production String

Prot. String

Surface String

Casing Record

Liner

8 5/8"

Wgt/Ft

Top Bottom

00 216'

00 N/A

51/2"

Production String

Prot. String

Surface String

Casing Record

Liner

8 5/8"

Wgt/Ft

Top Bottom

00 216'

00 N/A

51/2"

Production String

Prot. String

Surface String

Casing Record

Liner

8 5/8"

Wgt/Ft

Top Bottom

00 216'

00 N/A

51/2"

Production String

Prot. String

Surface String

Casing Record

Liner

8 5/8"

Wgt/Ft

Top Bottom

00 216'

00 N/A

51/2"

Production String

Prot. String

Surface String

Casing Record

Liner

8 5/8"

Wgt/Ft

Top Bottom

00 216'

00 N/A

51/2"

Production String

Prot. String

Surface String

Casing Record

Liner

8 5/8"

Wgt/Ft

Top Bottom

00 216'

00 N/A

51/2"

Production String

Prot. String

Surface String

Casing Record

Liner

8 5/8"

Wgt/Ft

Top Bottom

00 216'

00 N/A

51/2"

Production String

Prot. String

Surface String

Casing Record

Liner

8 5/8"

Wgt/Ft

Top Bottom

00 216'

00 N/A

51/2"

Production String

Prot. String

Surface String

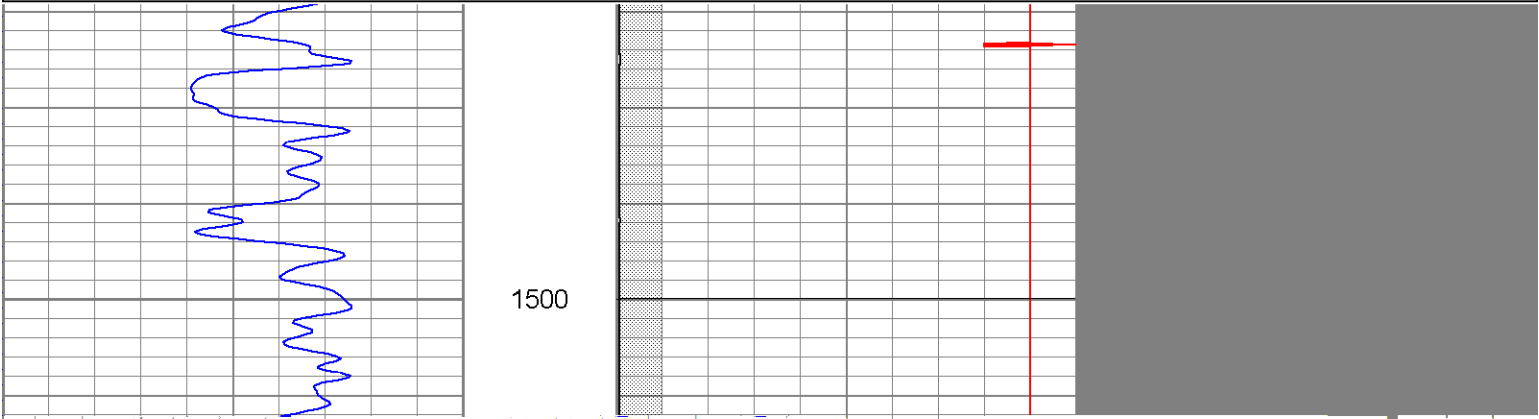
Casing Record

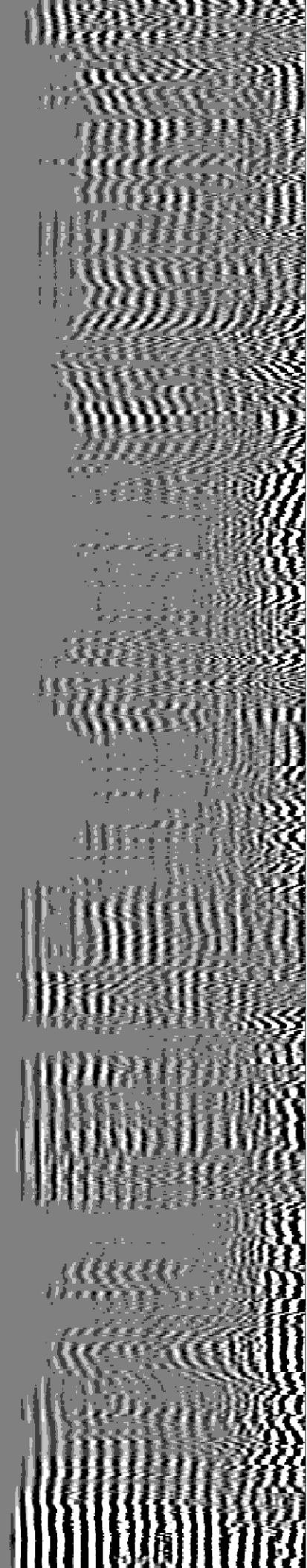
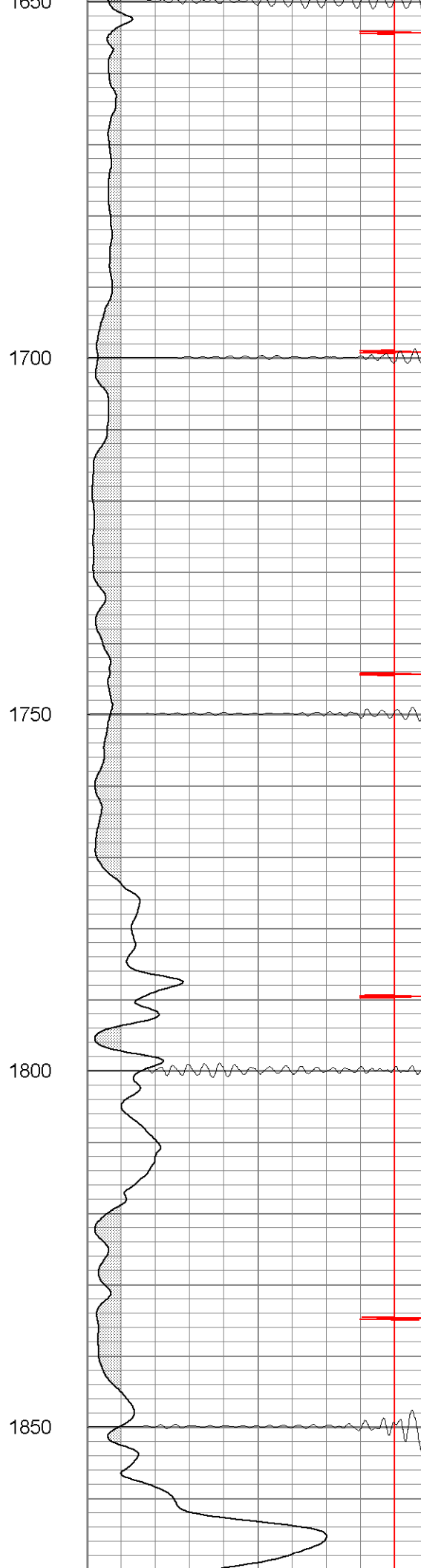
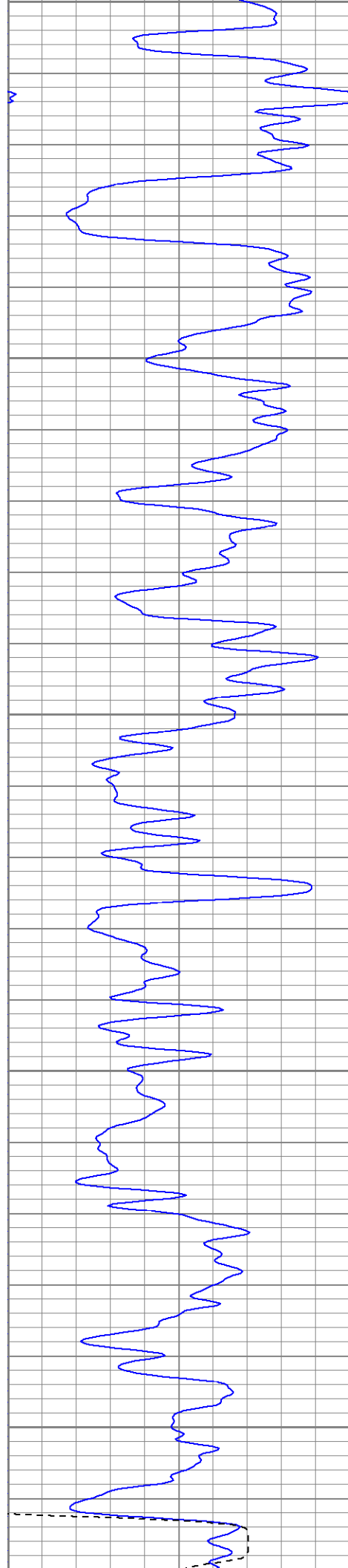
Liner

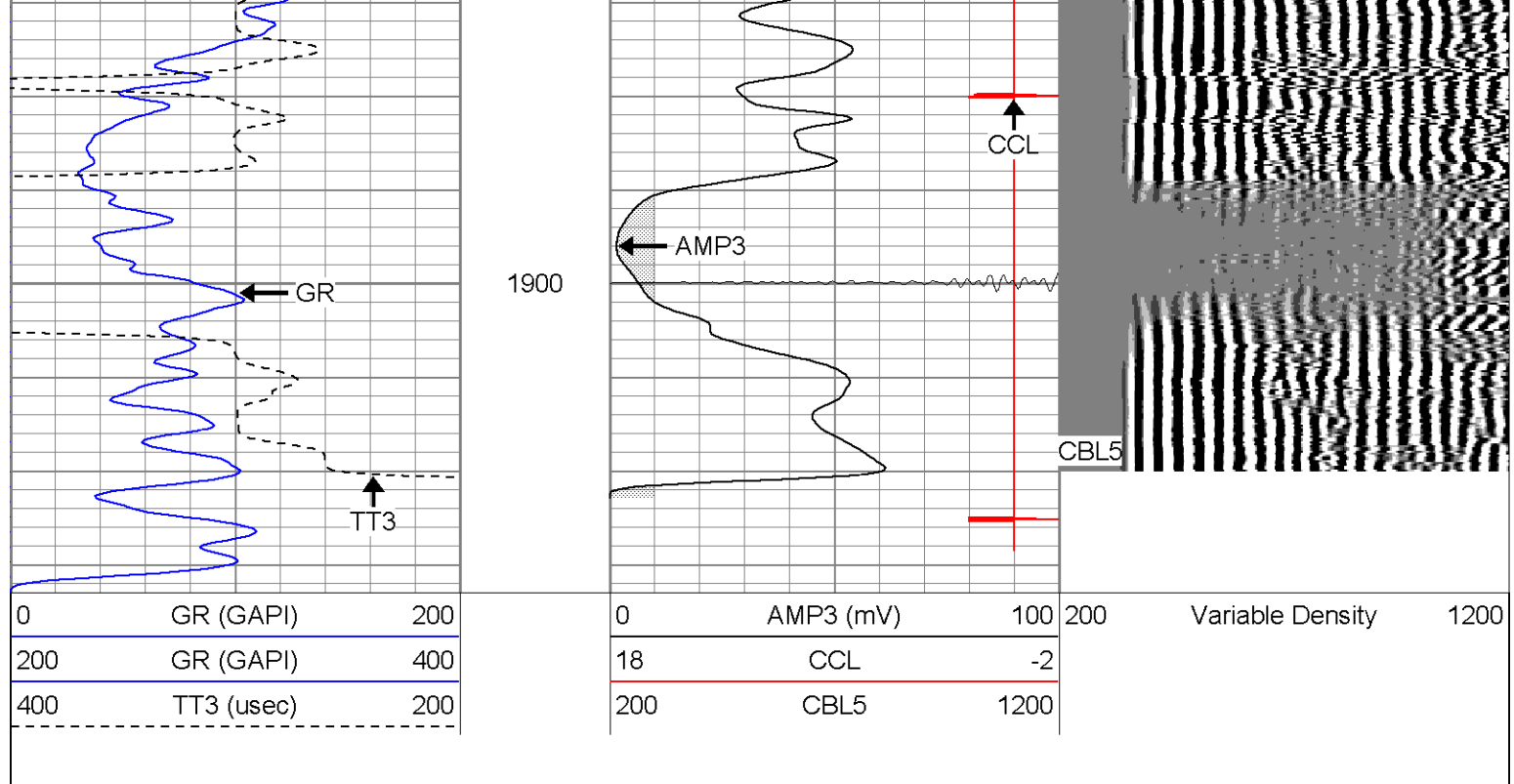
8 5/8"


Database File: ac1312x101206b.db
Dataset Pathname: pass2
Presentation Format: cblrt
Dataset Creation: Thu Oct 12 11:30:25 2006 by Log Open-Cased 060407
Charted by: Depth in Feet scaled 1:240

0	GR (GAPI)	200	0	AMP3 (mV)	100	200	Variable Density	1200
200	GR (GAPI)	400	18	CCL	-2			
400	TT3 (usec)	200	200	CBL5	1200			







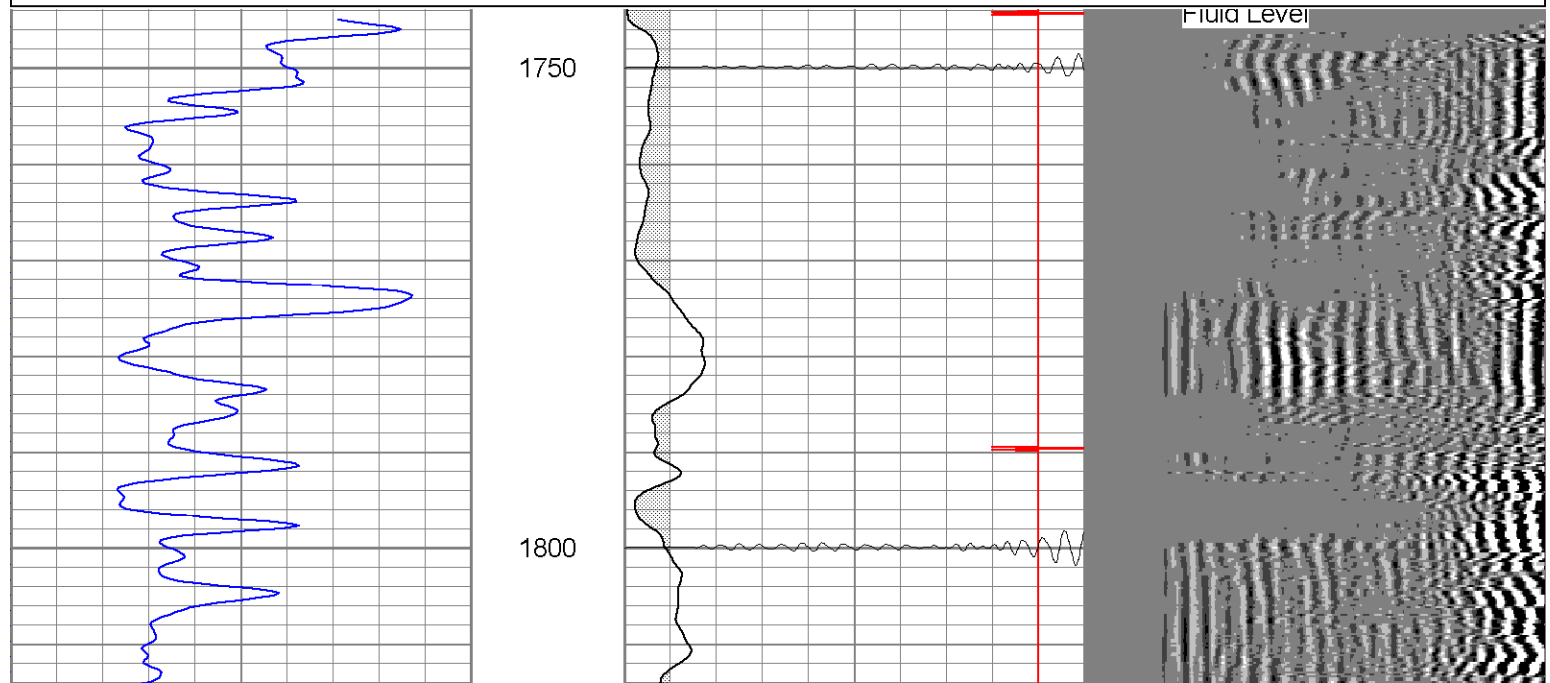


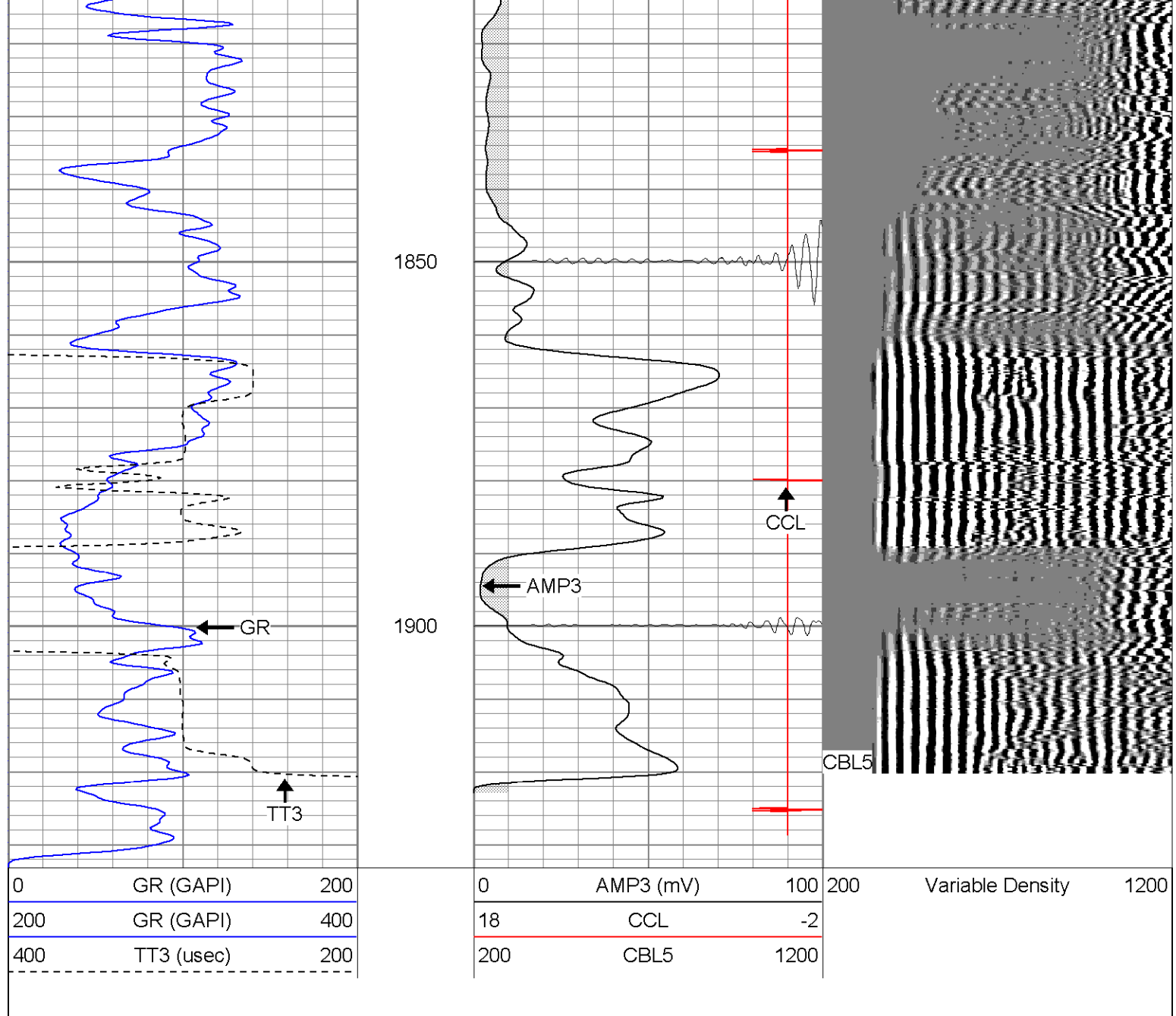
SUPERIOR
Black Lick, Pa.
Mercer, Pa.
Wooster, Oh.
Cleveland, Ok.
Trinidad, Co.

Repeat Section

Database File: ac1312x101206b.db
 Dataset Pathname: pass1
 Presentation Format: cblrt
 Dataset Creation: Thu Oct 12 11:18:06 2006 by Log Open-Cased 060407
 Charted by: Depth in Feet scaled 1:240

0	GR (GAPI)	200	0	AMP3 (mV)	100	200	Variable Density	1200
200	GR (GAPI)	400	18	CCL	-2			
400	TT3 (usec)	200	200	CBL5	1200			



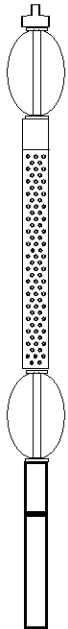


Calibration Report		
Database File:	ac1312x101206b.db	
Dataset Pathname:	pass1	
Dataset Creation:	Thu Oct 12 11:18:06 2006 by Log Open-Cased 060407	
Gamma Ray Calibration Report		
Serial Number:	Titan2.75	
Tool Model:	2.75	
Performed:	Thu Oct 12 07:01:01 2006	
Calibrator Value:	200.0	GAPI
Background Reading:	40.0	cps
Calibrator Reading:	240.0	cps
Sensitivity:	1.1000	GAPI/cps
Cement Bond Log Calibration Report		
Serial Number:	Titan4	
Tool Model:	4	
Performed:	Thu Oct 12 07:38:41 2006	

1054.62	ft
5.5	in

Signal Zero:	0	1	mV
Calibrated Amplitude:	85	85	mV
Reading at Signal Zero:	0.00161133	0.0143555	V
Reading in Free Pipe:	1.27	1.65081	V

67.0142	51.3306
-0.107982	0.263125

Sensor	Offset (ft)	Schematic	Description	Len (ft)	OD (in)	Wt (lb)
CHD	20.38		CHD-None (0)	0.75	1.50	5.00
CENT	19.63		CENT-X (2)	3.00	1.69	25.00
WVF5	12.82		CBL-4 (Titan4)	8.15	2.25	110.00
WVF3	11.82					
CENT	8.48		CENT-X (1)	3.00	1.69	25.00
CCL	4.27		CCL-2.75 (Titan2.75)	1.71	2.75	15.00
GR	1.42		GR-2.75 (Titan2.75) Two Point	3.77	2.75	25.00
<div>Dataset: ac1312x101206b.db: field/well/run1/pass1</div> <div>Total Length: 20.38 ft</div> <div>Total Weight: 205.00 lb</div> <div>O.D. 2.75 in</div>						