



SUPERIOR
Black Lick, Pa.
Mercer, Pa.
Wooster, Oh.
Cleveland, Ok.
Trinidad, Co.

DUAL INDUCTION LOG

Company XTO Energy Inc.
Well Hill Ranch 16-09 VX
Field Purgatoire River
County Las Animas State Colorado

Location: API #: 05 071 09207 00

3354' FNL & 511' FEL

SEC 16 TWP 35S RGE 67W

Permanent Datum Ground Level Elevation 7824'
Log Measured From Ground Level
Drilling Measured From Ground Level

Other Services
CDL
NEUTRON
Elevation
K.B. -----
D.F. -----
G.L. 7824'

Date 4-15-07

Run Number One

Depth Driller 2335'

Depth Logger 2325'

Bottom Logged Interval 2323'

Top Log Interval Surface Casing

Casing Driller 8 5/8" @ 483'

Casing Logger 483'

Bit Size 7 7/8"

Type Fluid in Hole Water

Density / Viscosity ///

pH / Fluid Loss ///

Source of Sample ///

Rm @ Meas. Temp ///

Rmf @ Meas. Temp ///

Rmc @ Meas. Temp ///

Source of Rmf / Rmc ///

Rm @ BHT ///

Time Circulation Stopped 8:00 P.M.

Time Logger on Bottom 10:15 P.M.

Maximum Recorded Temperature 104 DEG F

Equipment Number T0697

Location Trinidad

Recorded By M. Norton

Witnessed By Mr. Don Johnson

>>> Fold Here >>>

All interpretations are opinions based on inferences from electrical or other measurements and we cannot and do not guarantee the accuracy or correctness of any interpretation, and we shall not, except in the case of gross or willful negligence on our part, be liable or responsible for any loss, costs, damages, or expenses incurred or sustained by anyone resulting from any interpretation made by any of our officers, agents or employees. These interpretations are also subject to our general terms and conditions set out in our current Price Schedule.

Comments

Well Directions:

Lorencito up XTO hill at white dumpster stay right, stay left @ T, at deadhorse stay right, at Y stay left, at bottom of hill stay left, stay on main road first drive thru location.

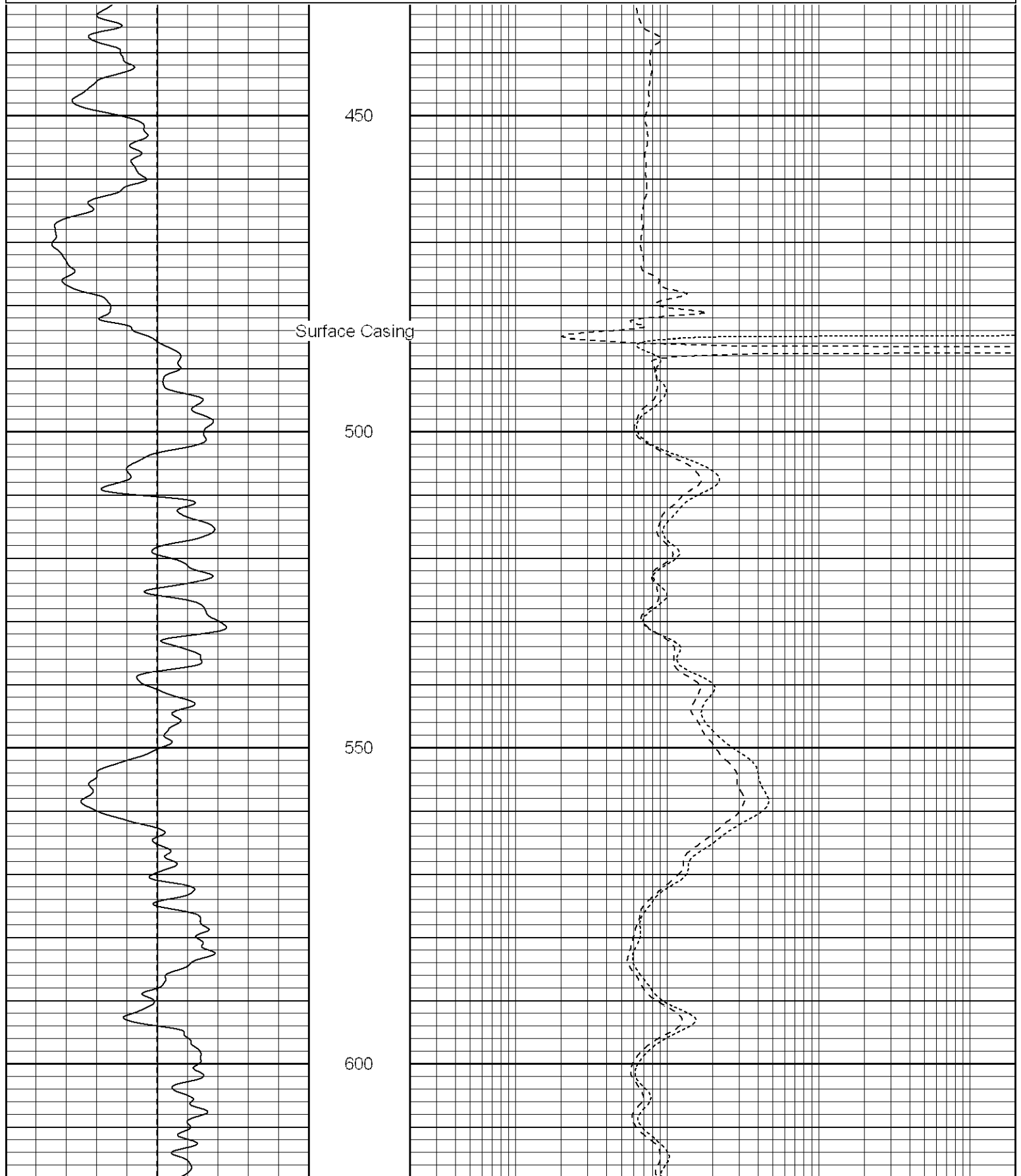


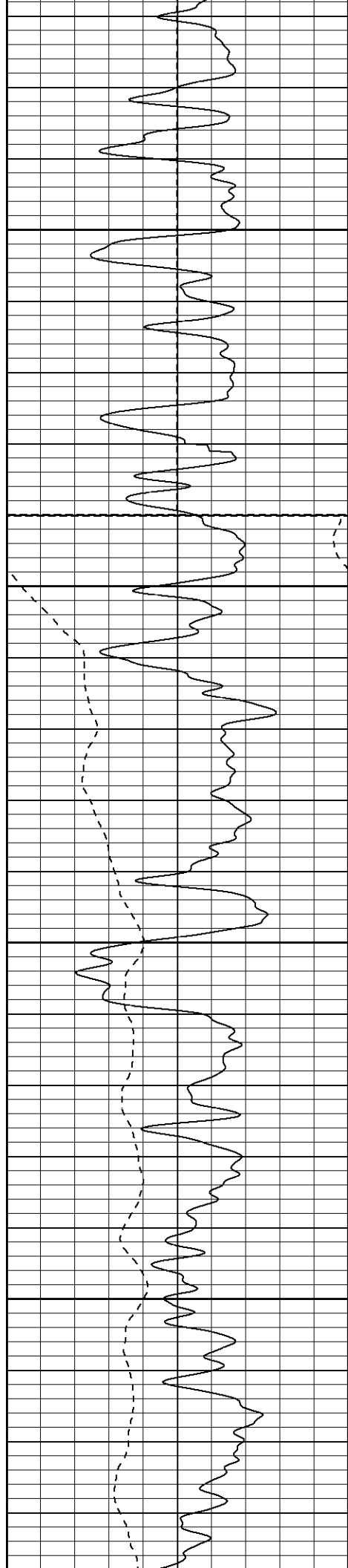
SUPERIOR
Black Lick, Pa.
Mercer, Pa.
Wooster, Oh.
Cleveland, Ok.
Trinidad, Co.

Main Pass

Database File: xtohr1609vx.db
Dataset Pathname: pass2.1
Presentation Format: dil
Dataset Creation: Mon Apr 16 00:23:45 2007 by Calc Open-Cased 061129
Charted by: Depth in Feet scaled 1:240

| | | | | | |
|------|-----------|-----|-----|--------------|------|
| 0 | GR (GAPI) | 200 | 0.2 | RILM (Ohm-m) | 2000 |
| -100 | SP (mV) | 100 | 0.2 | RILD (Ohm-m) | 2000 |
| | | | 0.2 | RLL3 (Ohm-m) | 2000 |





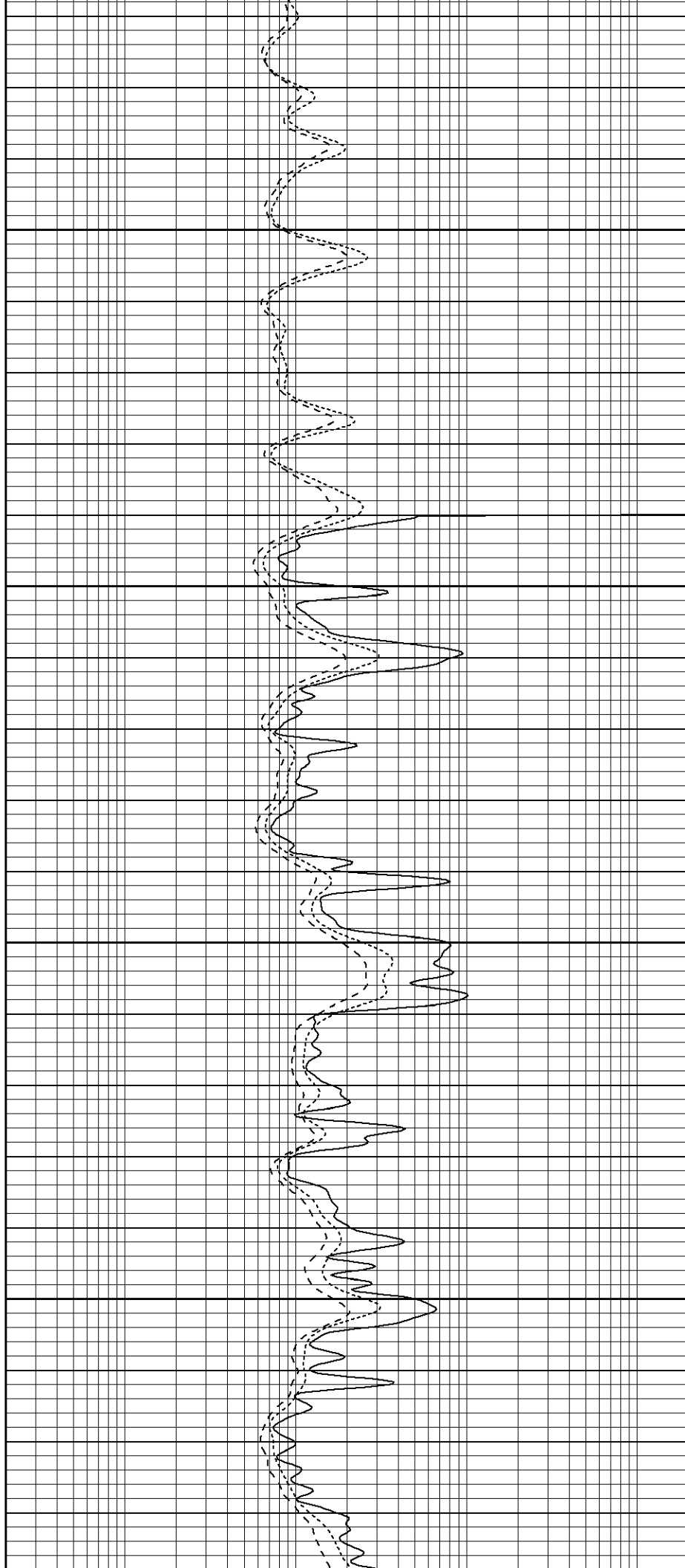
650

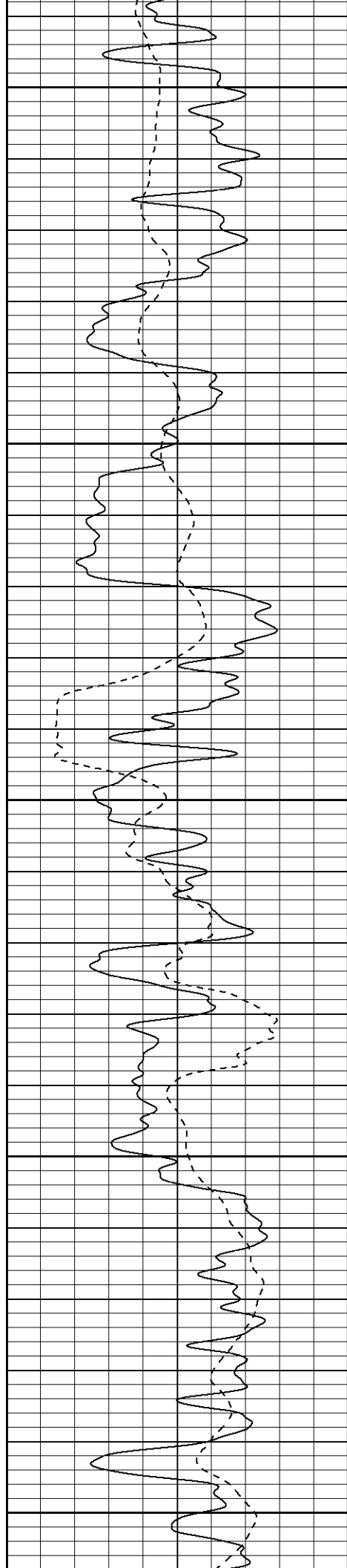
Fluid Level

700

750

800





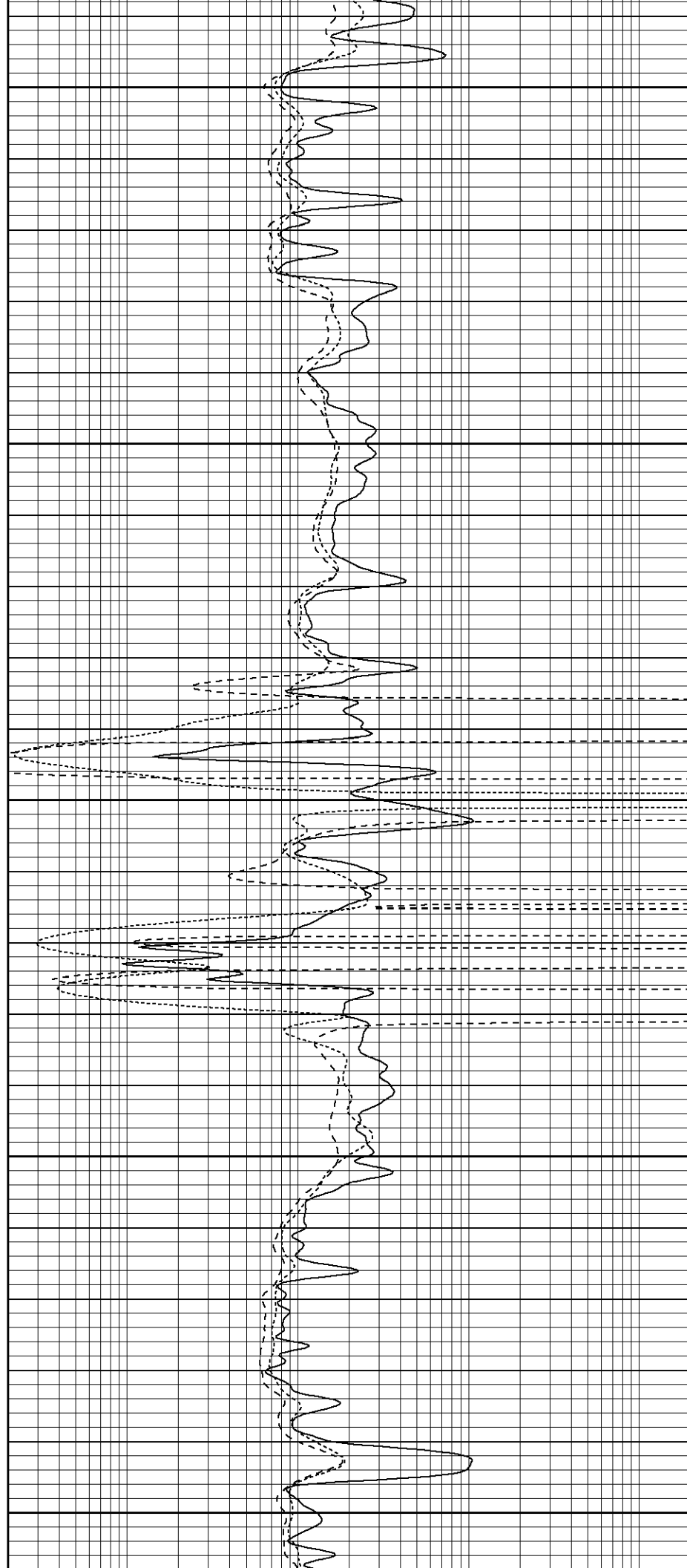
850

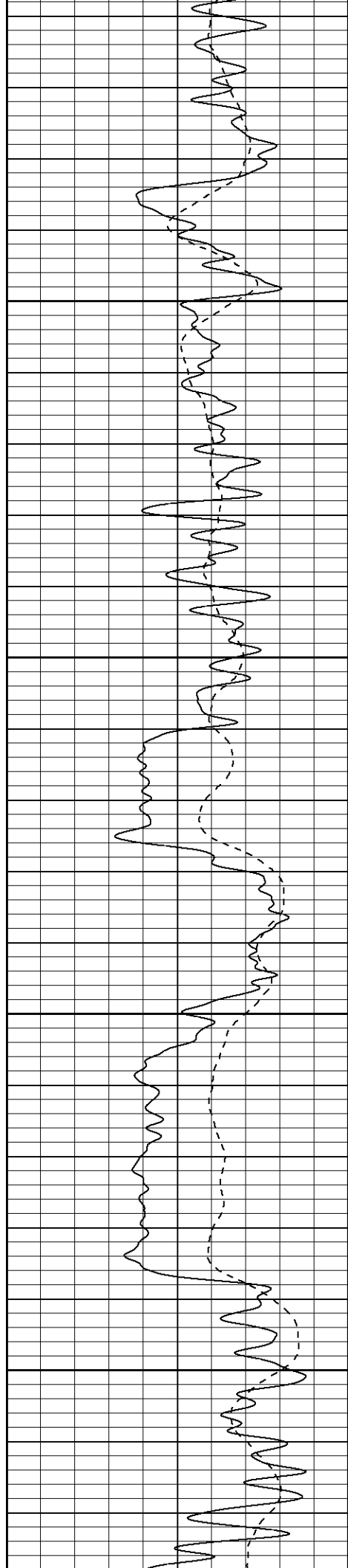
900

950

1000

1050



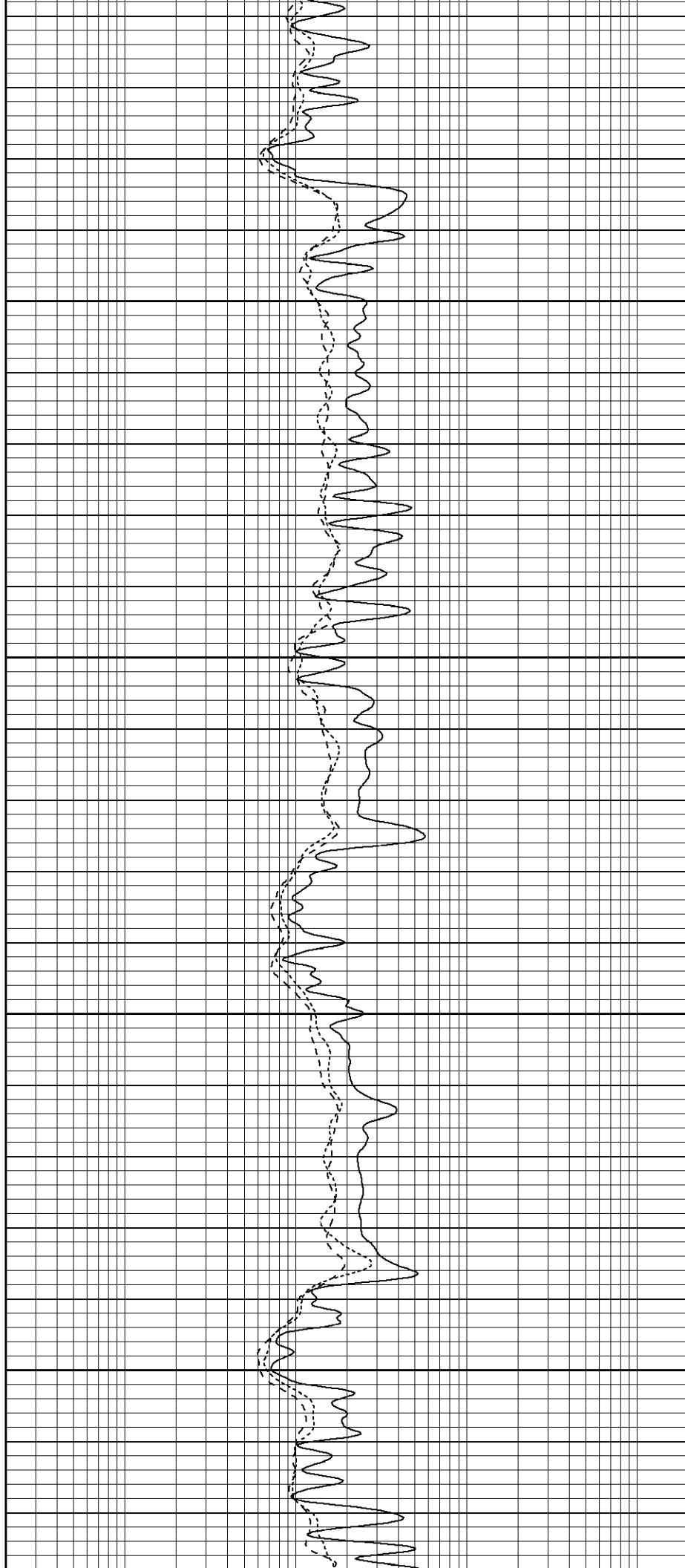


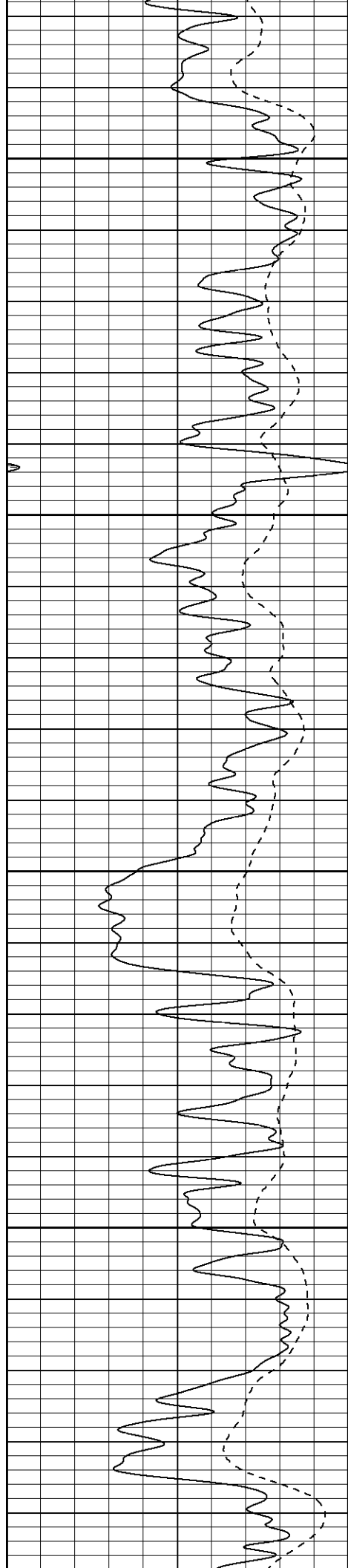
1100

1150

1200

1250



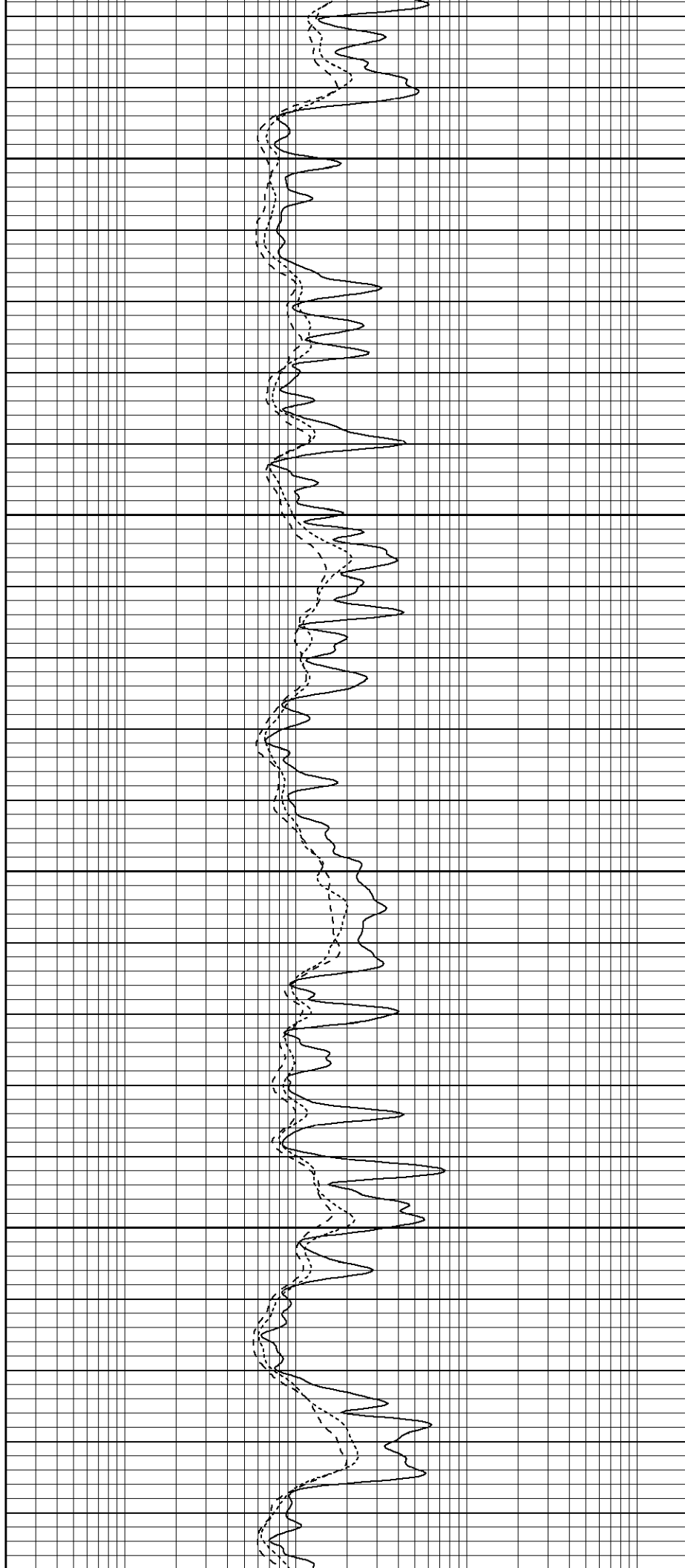


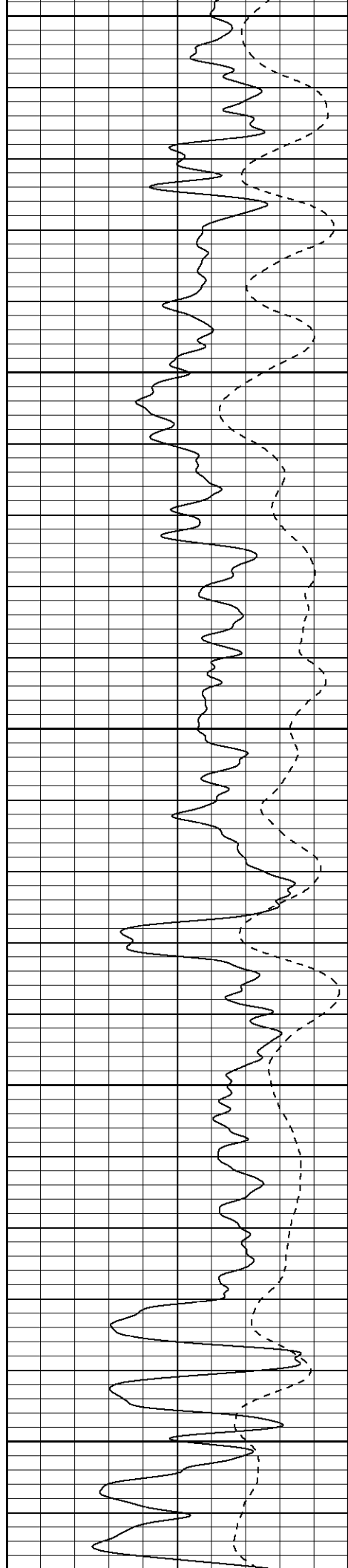
1300

1350

1400

1450





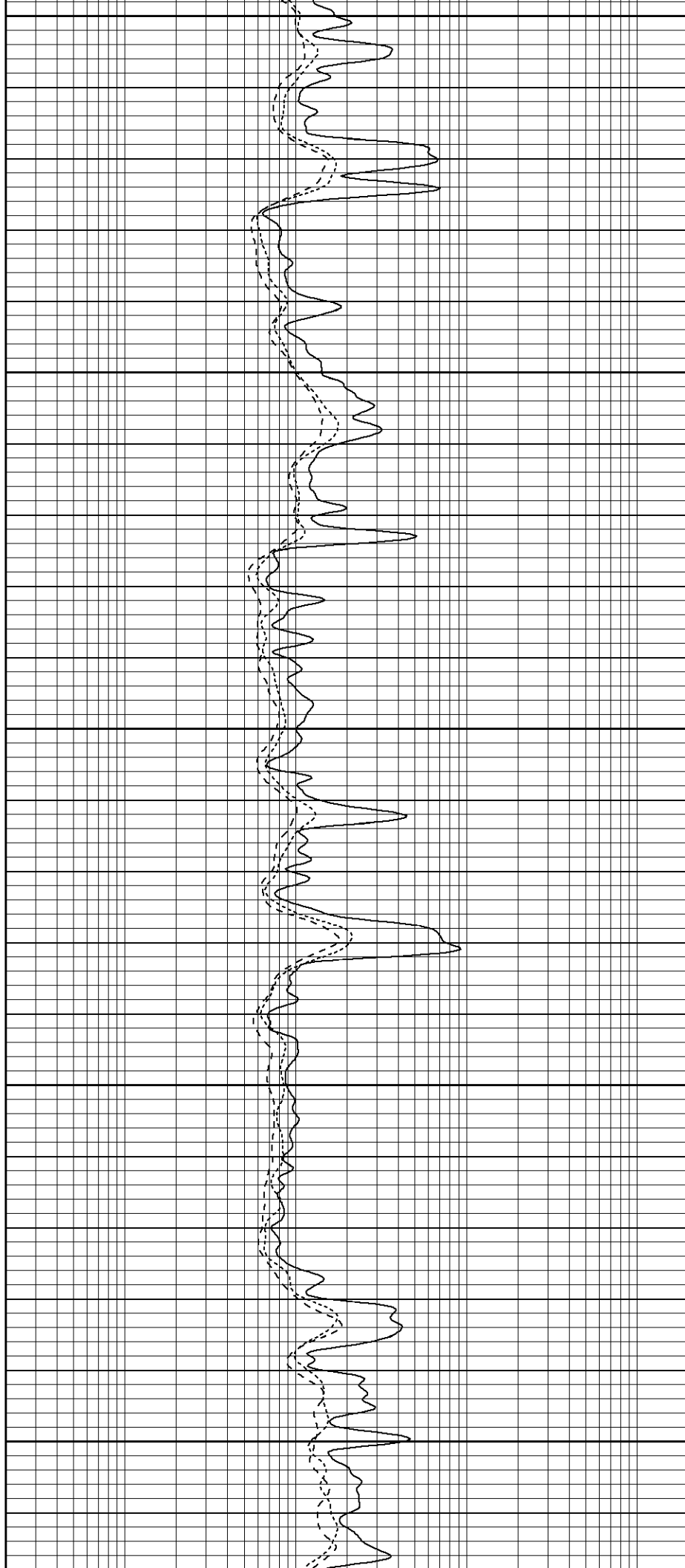
1500

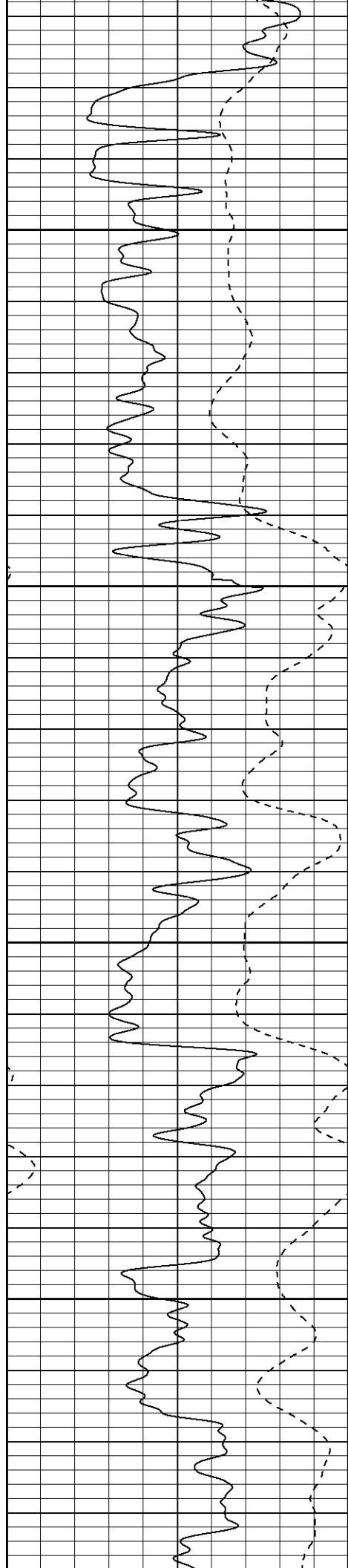
1550

1600

1650

1700



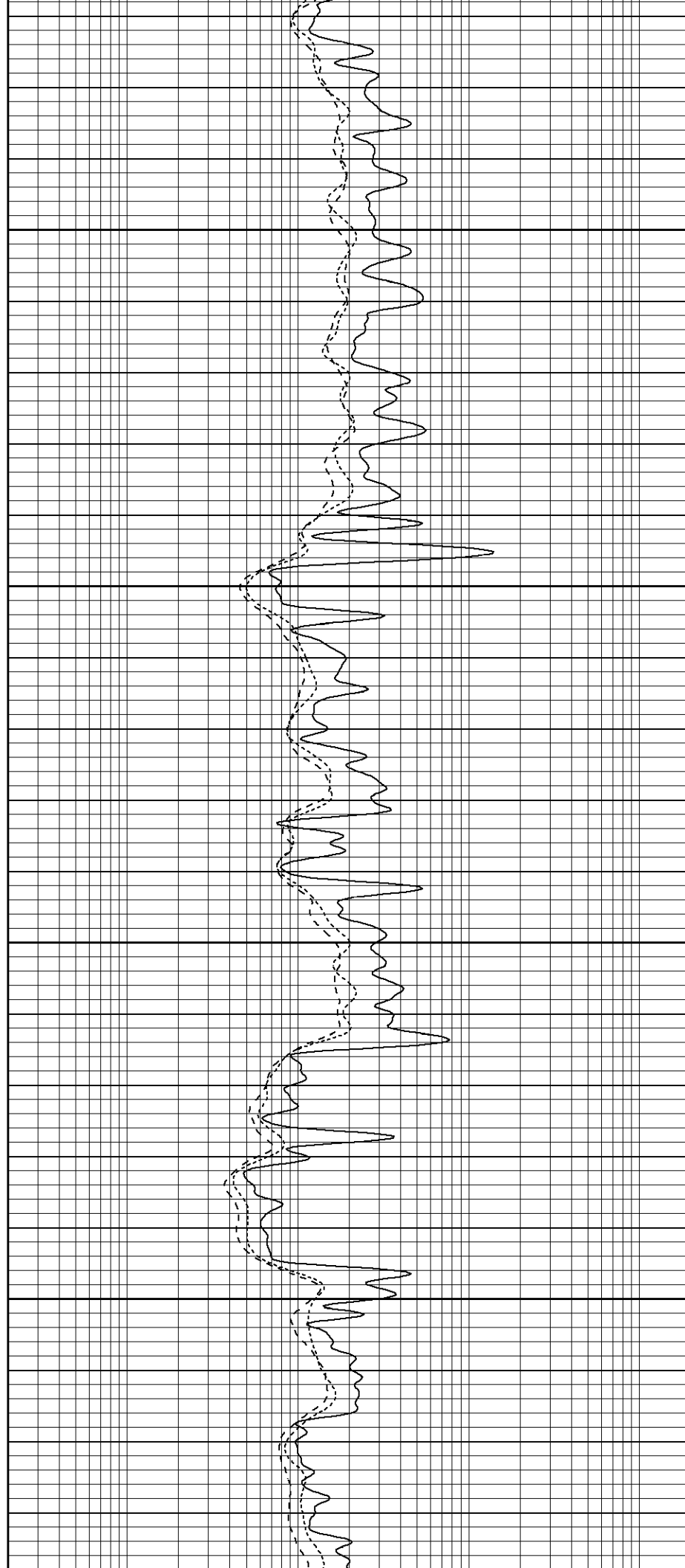


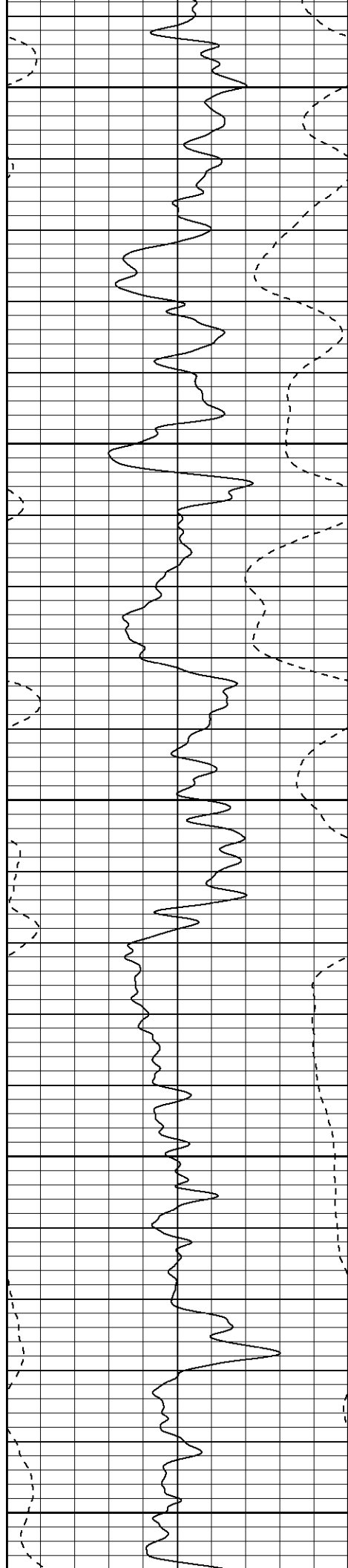
1750

1800

1850

1900





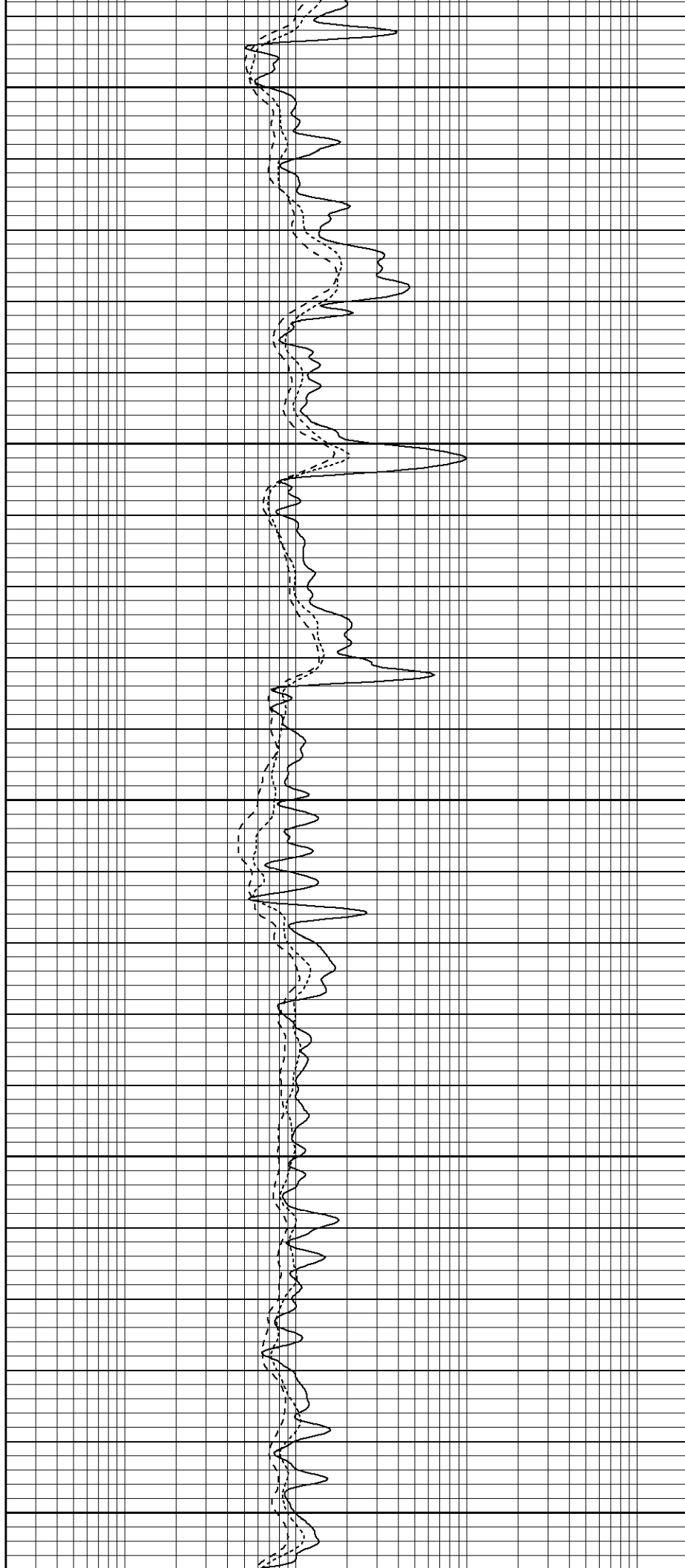
1950

2000

2050

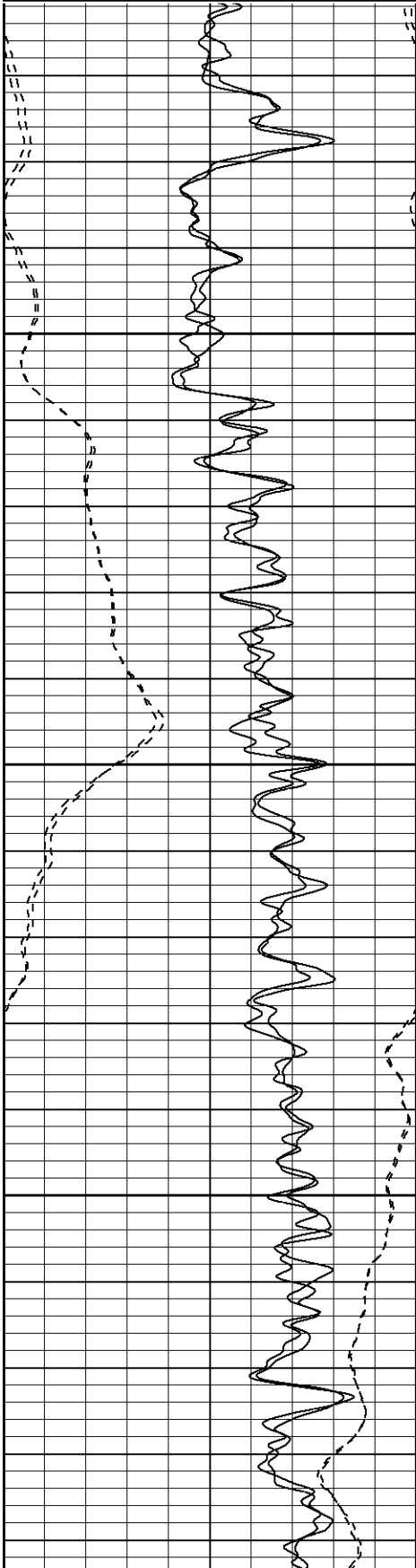
2100

2150



| | | |
|------|------------------|-----|
| 0 | GR (GAPI) | 200 |
| -100 | SP (mV) | 100 |
| 0 | GR-repeat (GAPI) | 200 |
| -100 | SP-repeat (mV) | 100 |

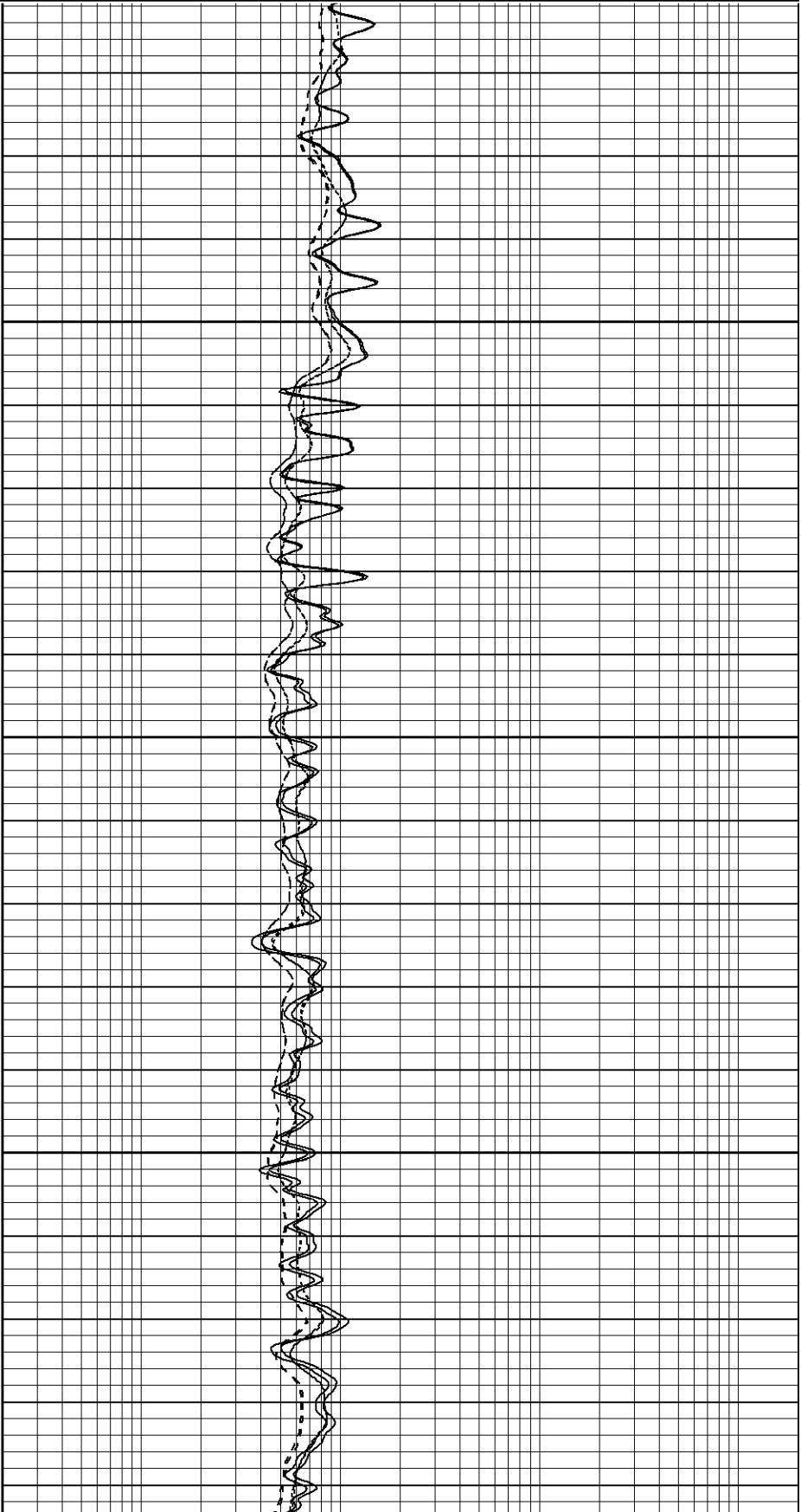
| | | |
|-----|---------------------|------|
| 0.2 | RILM (Ohm-m) | 2000 |
| 0.2 | RILD (Ohm-m) | 2000 |
| 0.2 | RLL3 (Ohm-m) | 2000 |
| 0.2 | RLL3-repeat (Ohm-m) | 2000 |
| 0.2 | RILM-repeat (Ohm-m) | 2000 |
| 0.2 | RILD-repeat (Ohm-m) | 2000 |

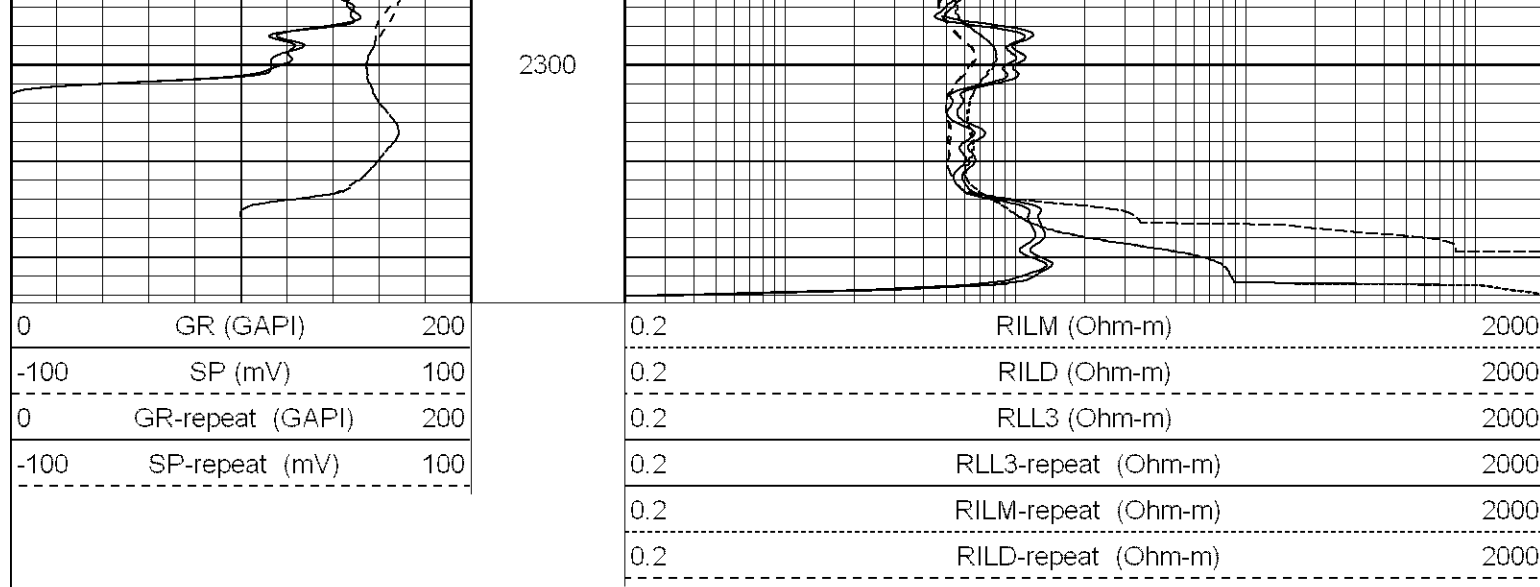


2150

2200

2250





Calibration Report

Database File: xtohr1609vx.db
 Dataset Pathname: pass2
 Dataset Creation: Sun Apr 15 22:13:05 2007 by Log Open-Cased 061129

Dual Induction Calibration Report

Serial-Model: 5375-G
 Surface Cal Performed: Fri Jan 19 08:02:09 2007
 Downhole Cal Performed: Sun Jan 21 14:02:19 2007

Surface Calibration

| Readings | | | | References | | | Results | |
|-----------|-------|-------|---|------------|---------|--------|---------|--------|
| Loop: | Air | Loop | | Air | Loop | | m | b |
| Deep | 0.001 | 0.620 | V | 0.000 | 500.000 | mmho-m | 807.659 | -1.119 |
| Medium | 0.005 | 0.743 | V | 0.000 | 550.000 | mmho-m | 744.727 | -3.505 |
| Internal: | Zero | Cal | | Zero | Cal | | m | b |
| Deep | 0.001 | 0.620 | V | 0.000 | 500.000 | mmho-m | 807.698 | -1.159 |
| Medium | 0.005 | 0.743 | V | 0.000 | 550.000 | mmho-m | 744.801 | -3.569 |

Downhole Calibration

| Readings | | | | References | | | Results | |
|-----------|-------|---------|--------|------------|---------|--------|---------|--------|
| Internal: | Zero | Cal | | Zero | Cal | | m | b |
| Deep | 0.123 | 499.901 | mmho-m | 0.039 | 500.015 | mmho-m | 1.000 | -0.084 |
| Medium | 0.245 | 549.982 | mmho-m | 0.064 | 550.009 | mmho-m | 1.000 | -0.182 |
| Shallow | 2.506 | 0.009 | V | 500.000 | 2.000 | Ohm-m | 150.000 | 0.000 |

Gamma Ray Calibration Report

Serial Number: 2001
 Tool Model: OH
 Performed: Wed Mar 28 14:54:25 2007

Calibrator Value: 1.0 GAPI

Background Reading: 0.0 cps
 Calibrator Reading: 1.0 cps

GAPI/cps

Dataset: xtohr1609vx.db: field/well/run1/pass2
Total Length: 25.08 ft
Total Weight: 390.00 lb
O.D. 4.00 in