



SUPERIOR
Black Lick, Pa.
Mercer, Pa.
Wooster, Oh.
Cleveland, Ok.
Trinidad, Co.

COMPENSATED DENSITY NEUTRON LOG

Company XTO Energy Inc.
Well Golden Eagle 21-14
Field Purgatoire River
County Las Animas State Colorado

Location: API # : 05 071 09213 00

250' FSL & 2127' FWL

SEC 21 TWP 33S RGE 67W

Permanent Datum Ground Level Elevation 7552'
Log Measured From Ground Level
Drilling Measured From Ground Level

Other Services
CDL
NEUTRON
Elevation
K.B. -----
D.F. -----
G.L. 7552'

Date	4-23-07		
Run Number	Two		
Depth Driller	2300'		
Depth Logger	2302'		
Bottom Logged Interval	2300'		
Top Log Interval	Surface Casing		
Casing Driller	8 5/8" @ 1130'		
Casing Logger	1130'		
Bit Size	7 7/8"		
Type Fluid in Hole	Water		
Density / Viscosity	///		
pH / Fluid Loss	///		
Source of Sample	///		
Rm @ Meas. Temp	///		
Rmf @ Meas. Temp	///		
Rmc @ Meas. Temp	///		
Source of Rmf / Rmc	///		
Rm @ BHT	///		
Time Circulation Stopped	4:00 P.M.		
Time Logger on Bottom	6:30 P.M.		
Maximum Recorded Temperature	101 DEG F		
Equipment Number	T0697		
Location	Trinidad		
Recorded By	M. Norton		
Witnessed By	Mr. Don Johnson		

>>> Fold Here >>>

All interpretations are opinions based on inferences from electrical or other measurements and we cannot and do not guarantee the accuracy or correctness of any interpretation, and we shall not, except in the case of gross or willful negligence on our part, be liable or responsible for any loss, costs, damages, or expenses incurred or sustained by anyone resulting from any interpretation made by any of our officers, agents or employees. These interpretations are also subject to our general terms and conditions set out in our current Price Schedule.

Comments

Density Neutron Porosity Presented On Sandstone Matrix.

ABHV Calculated For 5 1/2" Casing

Well Directions:

Two miles past Weston turn right, second left at compressor, second drive thru location.



SUPERIOR

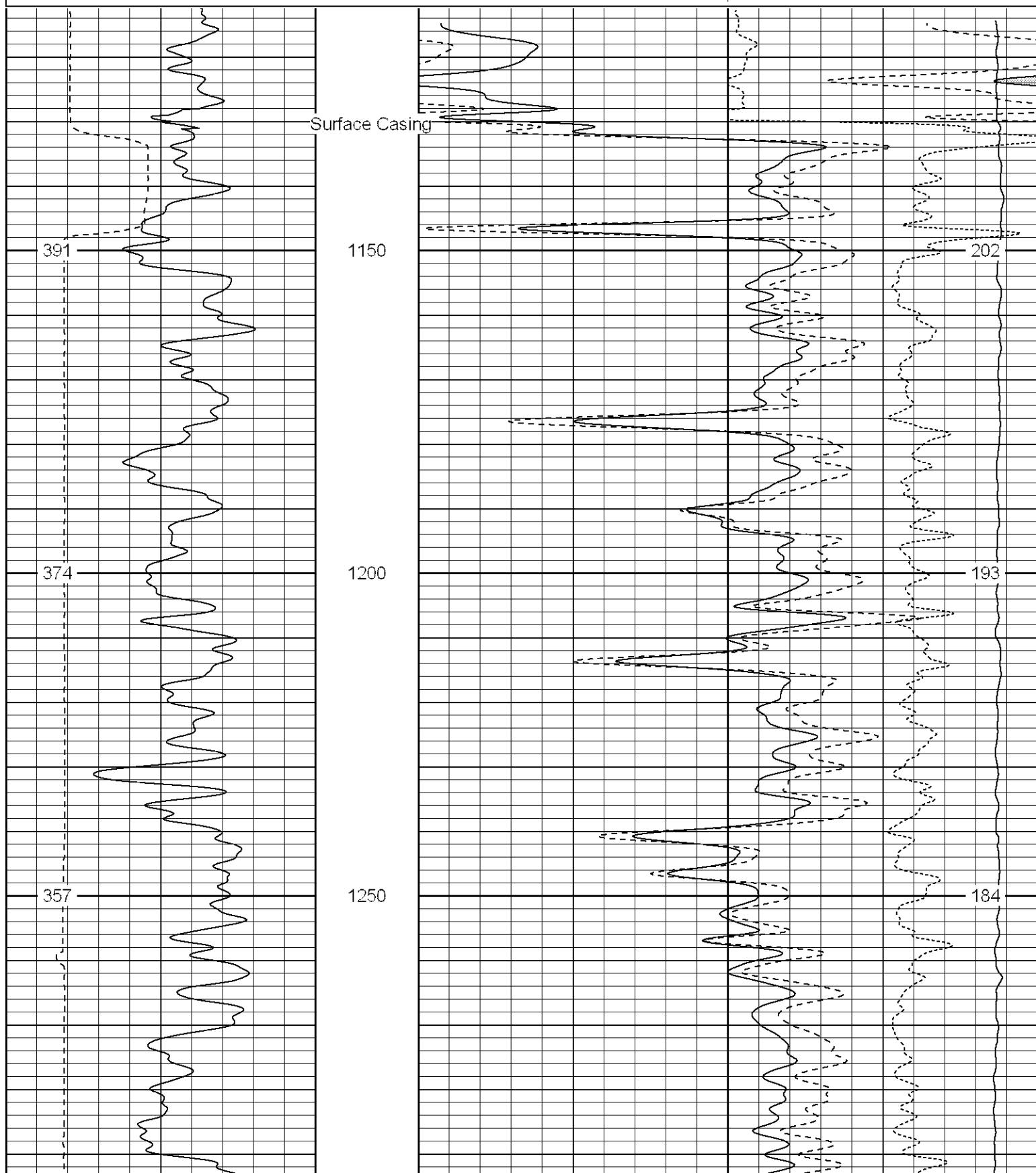
Black Lick, Pa.
Mercer, Pa.
Wooster, Oh.
Cleveland, Ok.
Trinidad, Co.

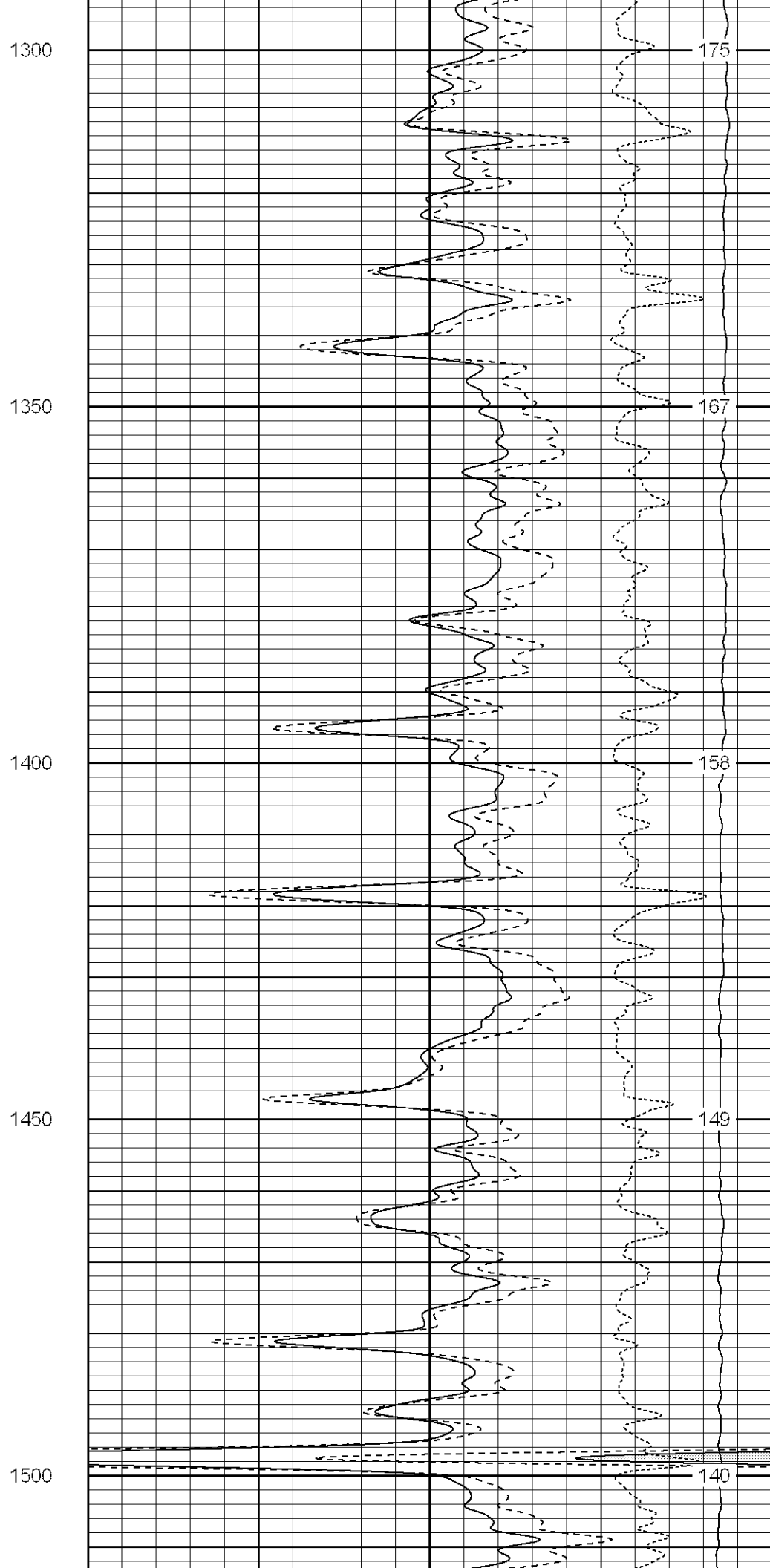
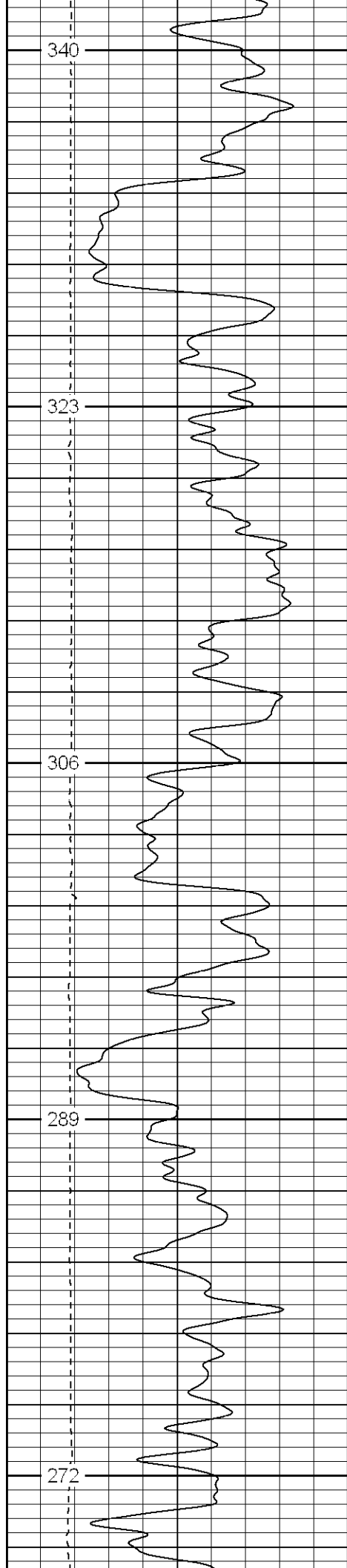
Main Pass

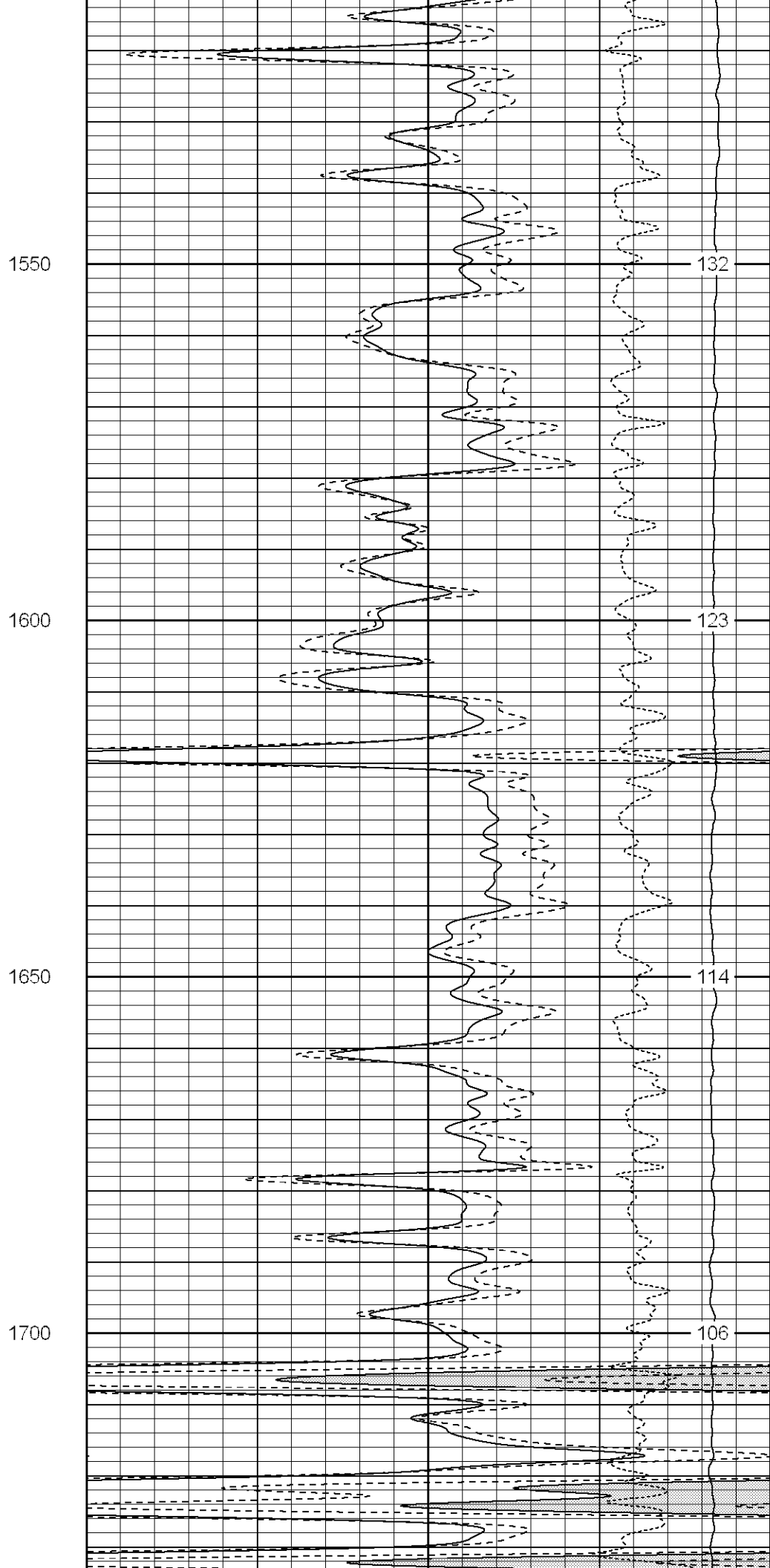
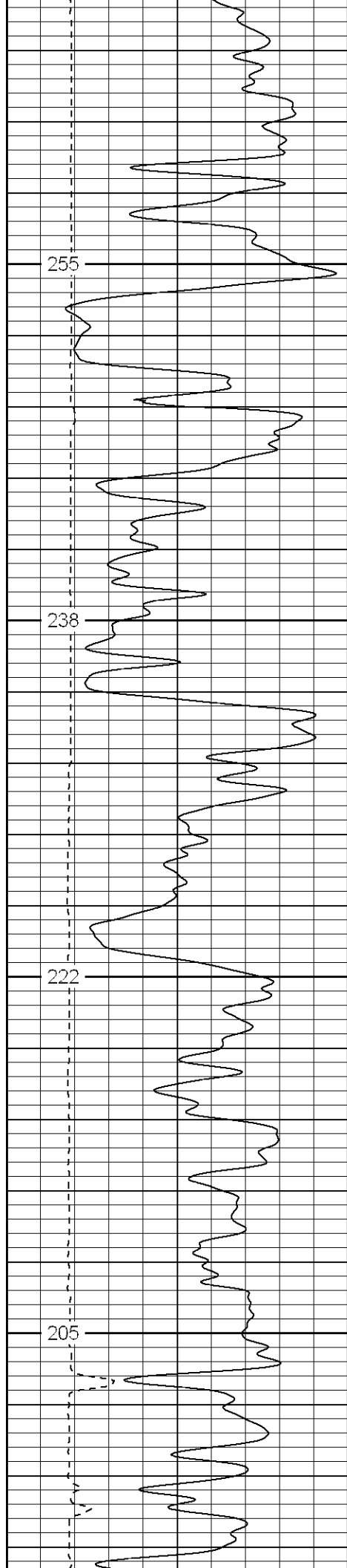
Database File: xtoge2114.db
Dataset Pathname: pass4.1
Presentation Format: cdl
Dataset Creation: Mon Apr 23 19:35:10 2007 by Calc Open-Cased 061129
Charted by: Depth in Feet scaled 1:240

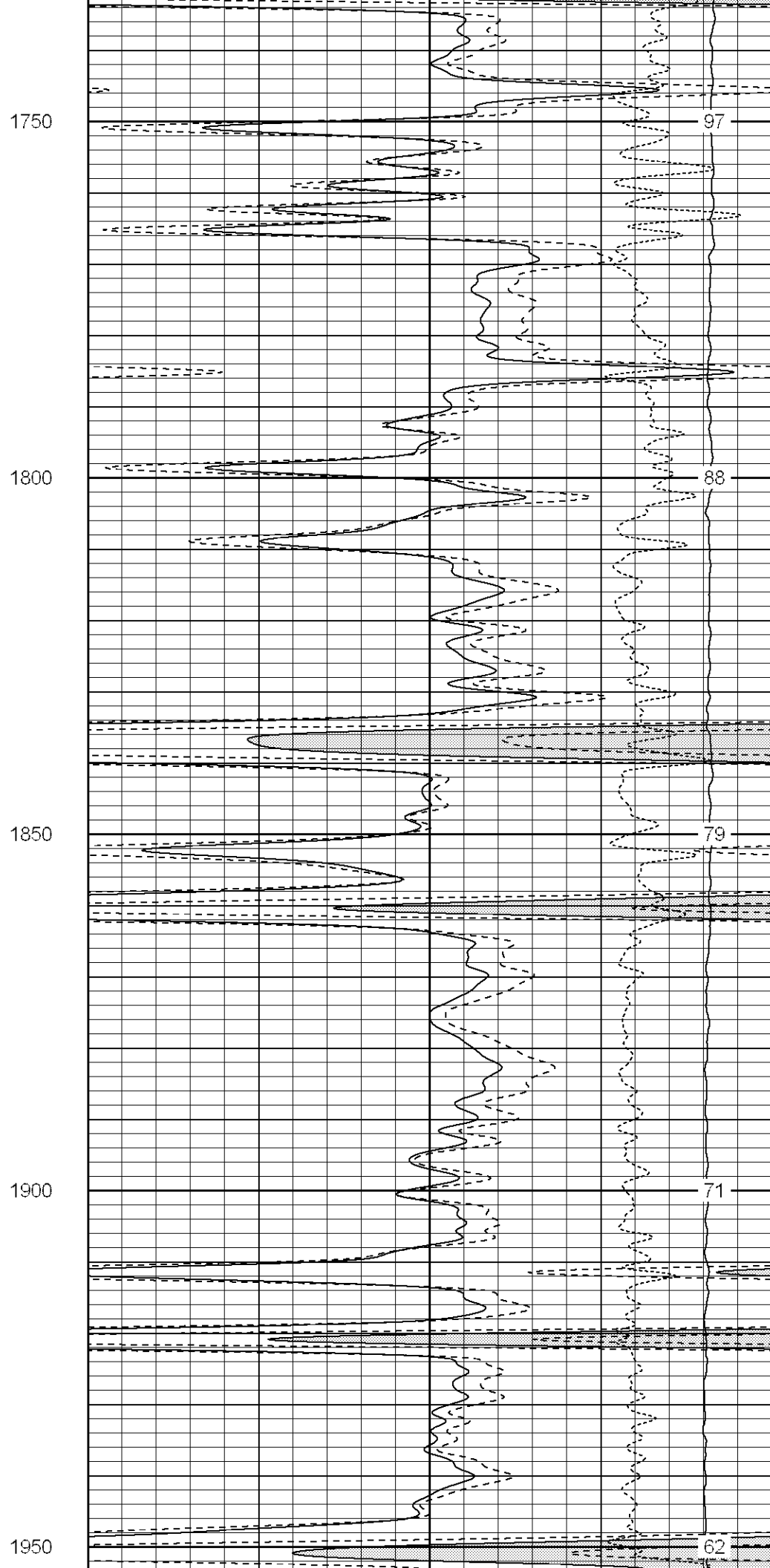
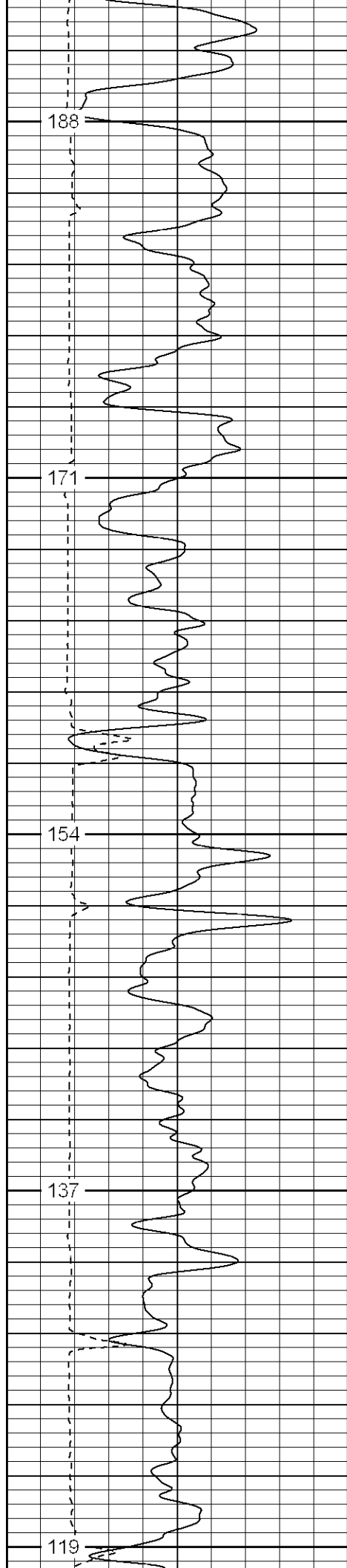
0	GR (GAPI)	200
6	DCAL (in)	16

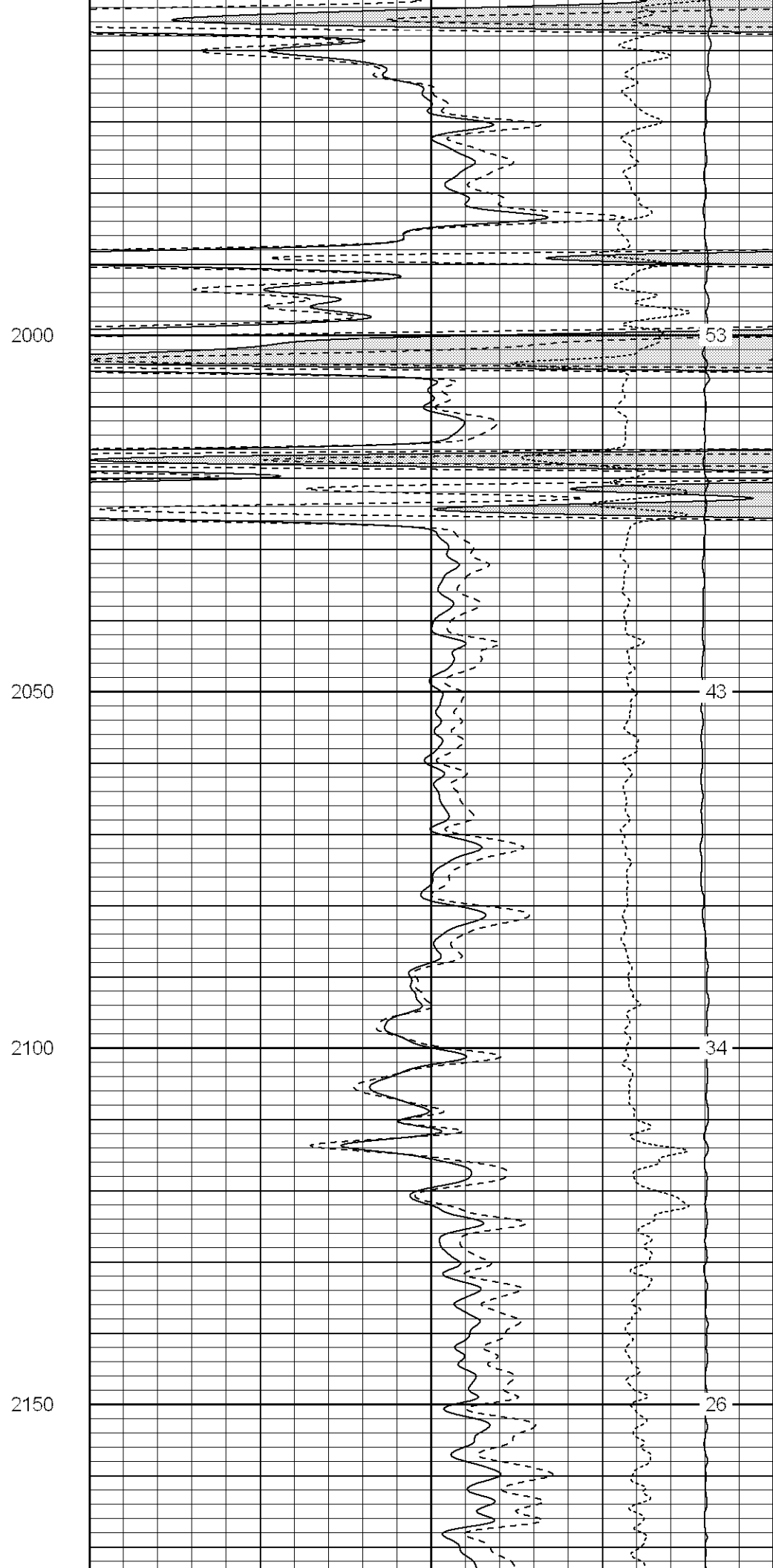
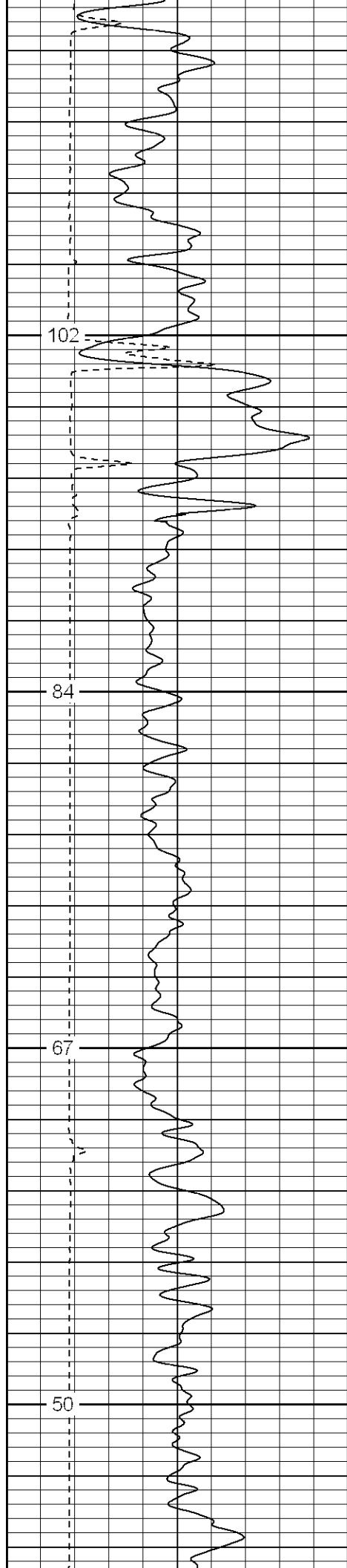
1	RHOB (g/cc)	2
30	DPOR (pu)	-10
-0.5	RHOC (g/cc)	0.5
4000	LTEN (lb)	0

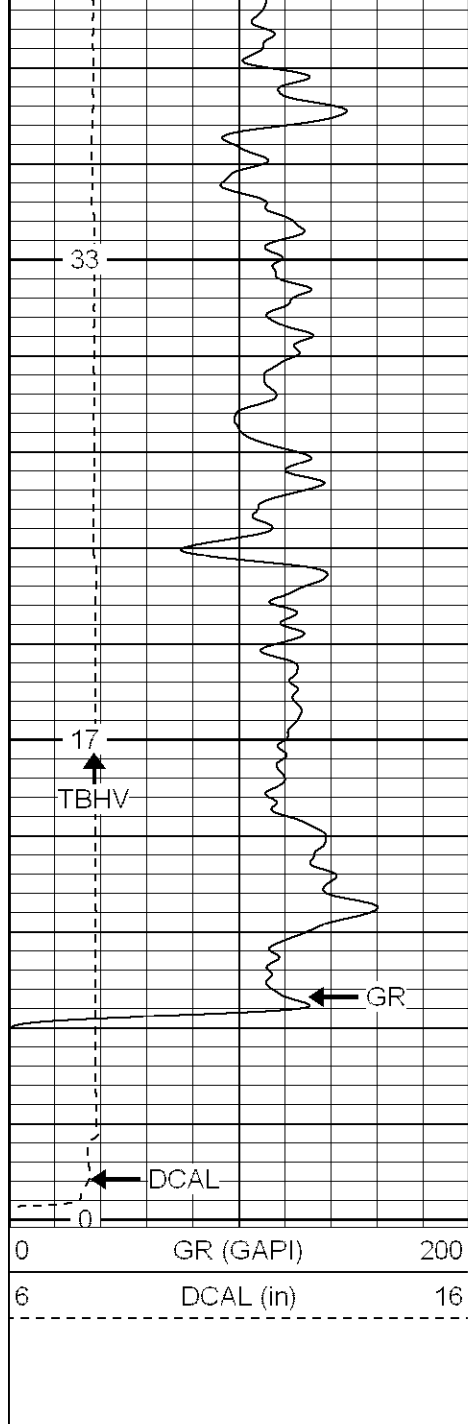








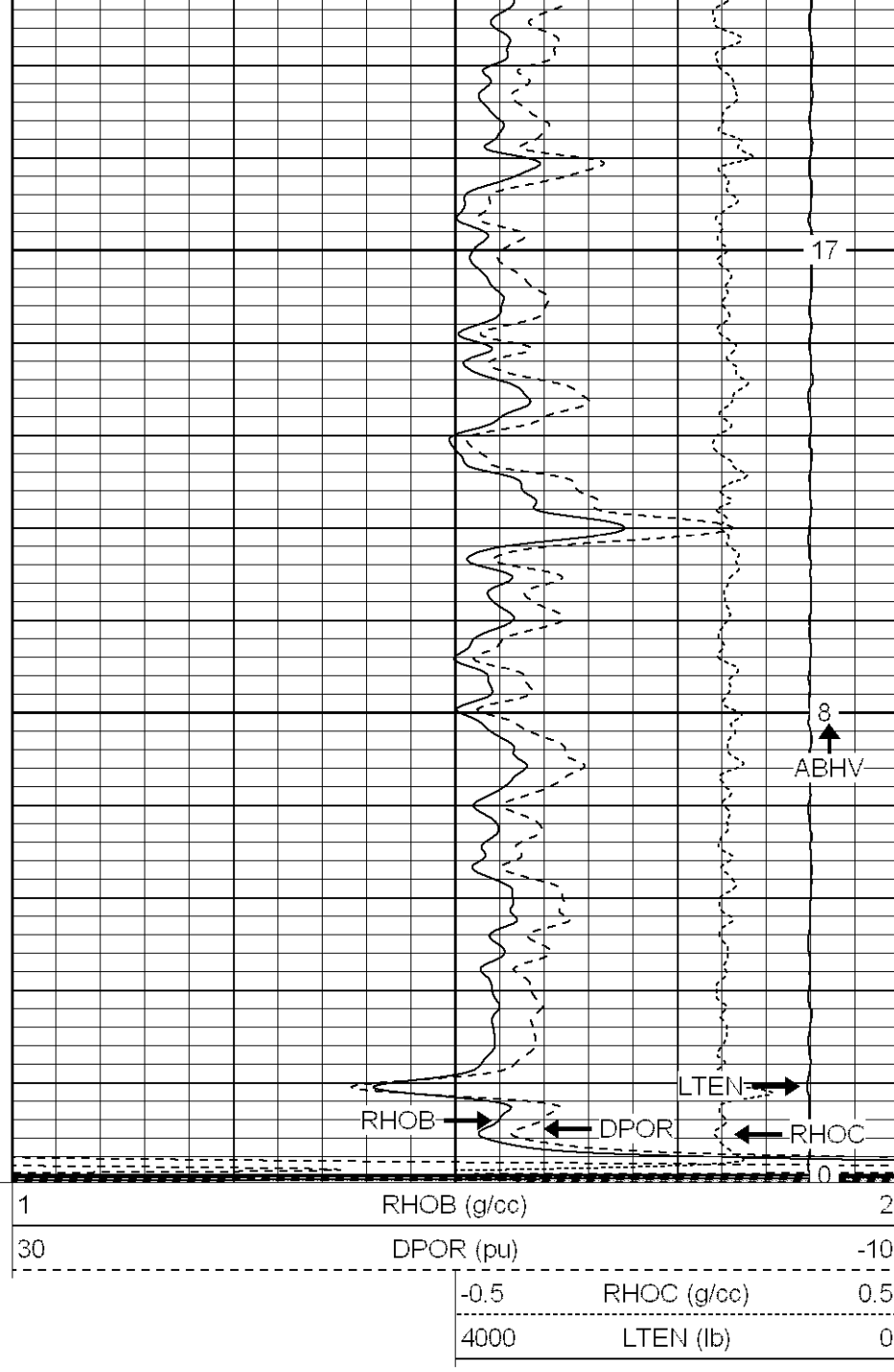




2200

2250

2300



SUPERIOR

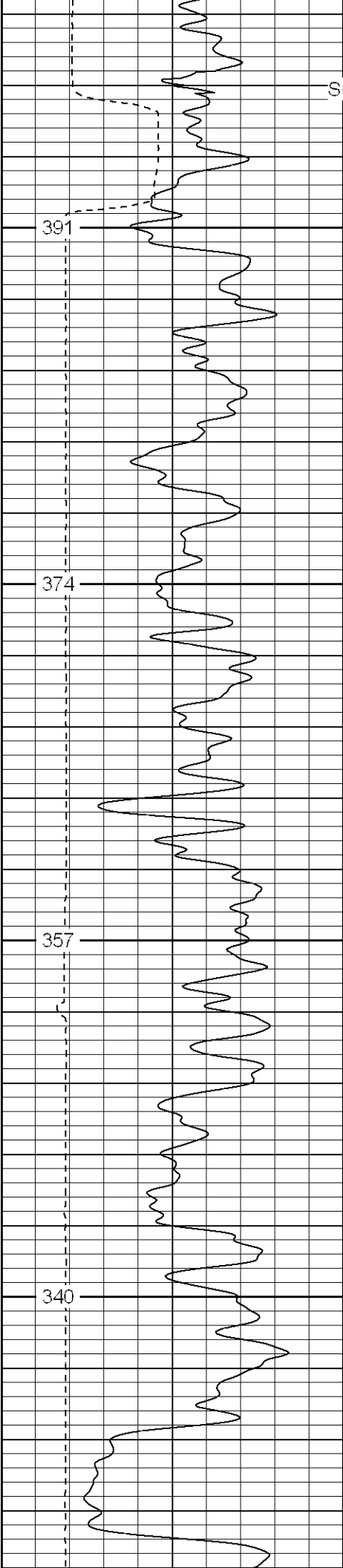
Black Lick, Pa.
Mercer, Pa.
Wooster, Oh.
Cleveland, Ok.
Trinidad, Co.

Main Pass

Database File: xtoge2114.db
Dataset Pathname: pass4.1
Presentation Format: cdnl
Dataset Creation: Mon Apr 23 19:35:10 2007 by Calc Open-Cased 061129
Charted by: Depth in Feet scaled 1:240

0	GR (GAPI)	200
6	DCAL (in)	16

30	NPOR (pu)	-10
30	DPOR (pu)	-10
-0.5	RHOC (g/cc)	0.5
4000	LTEN (lb)	0



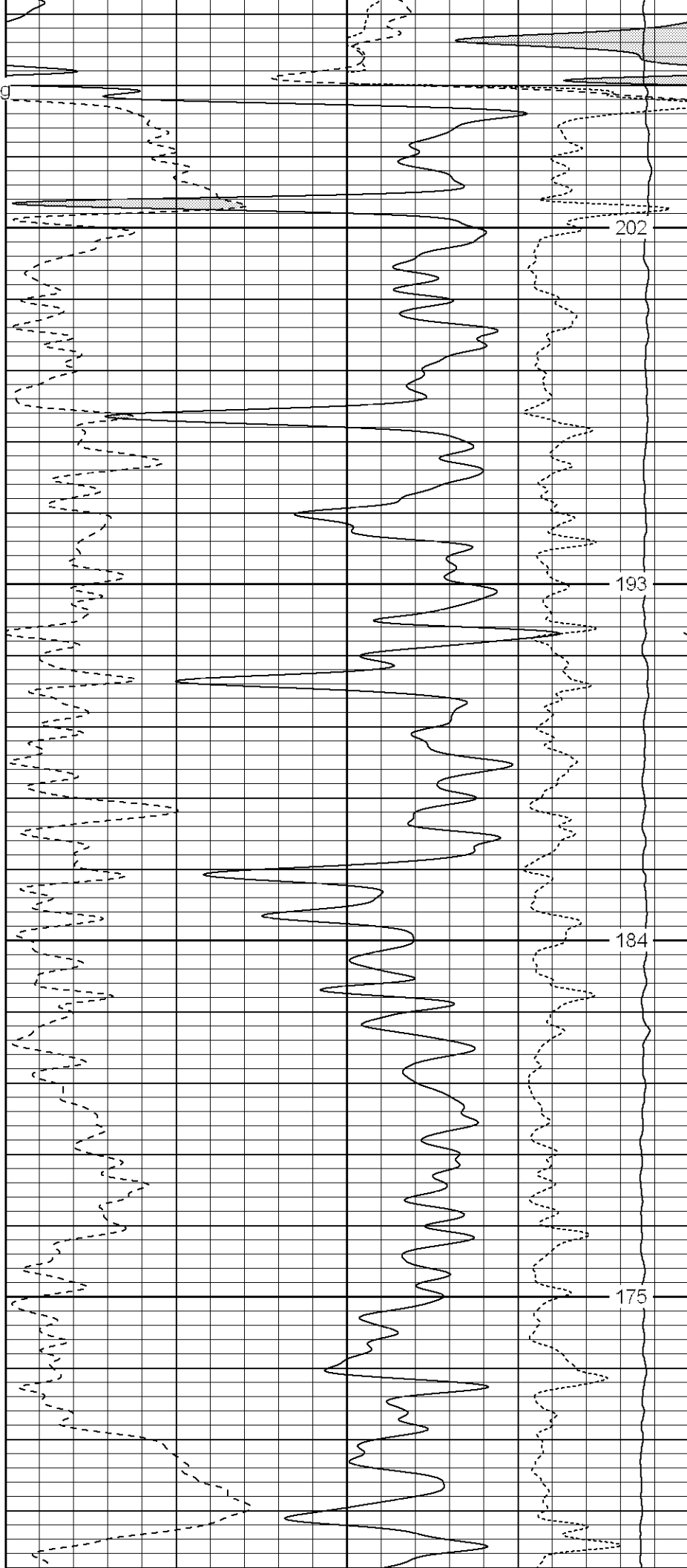
Surface Casing

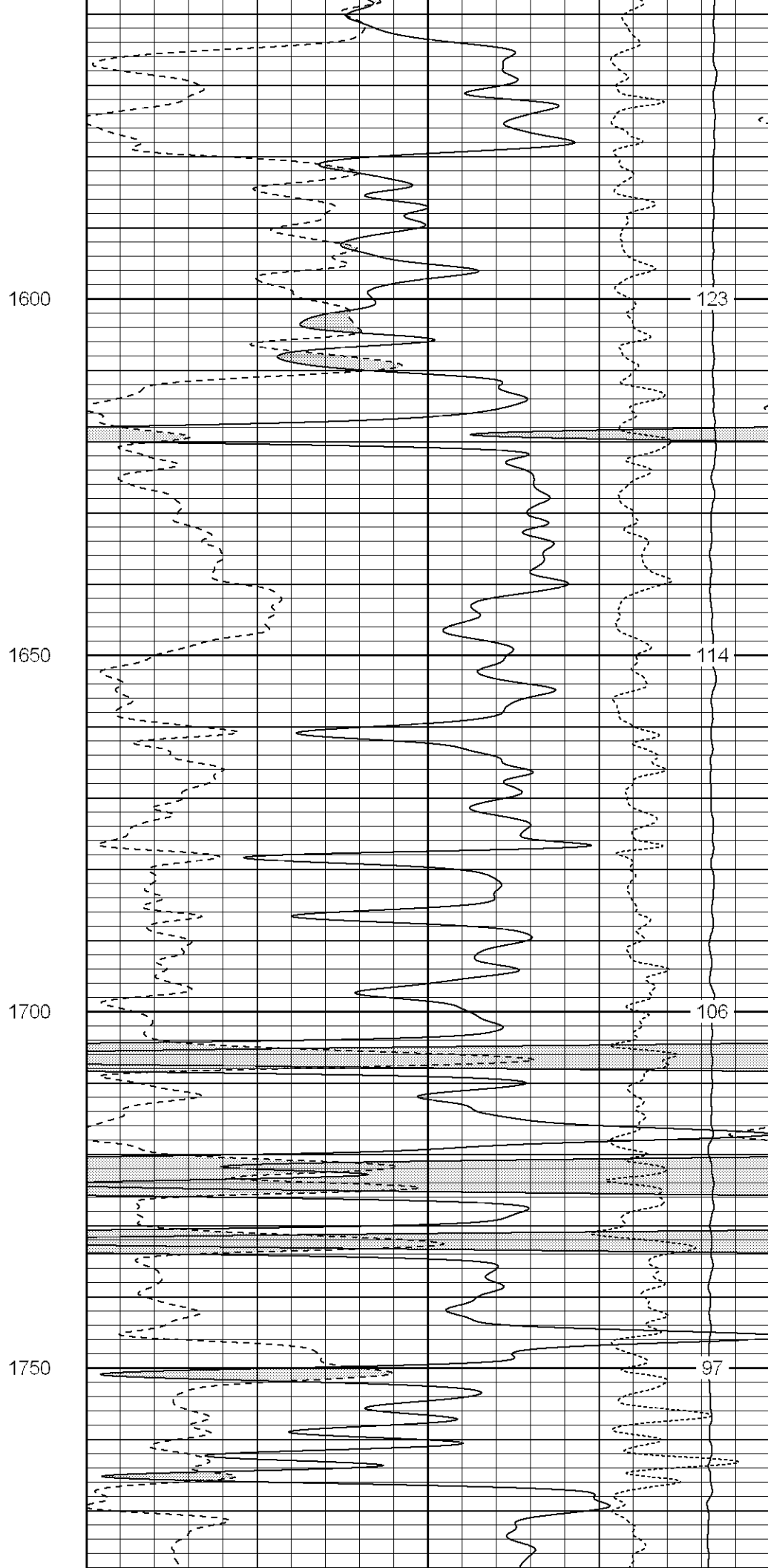
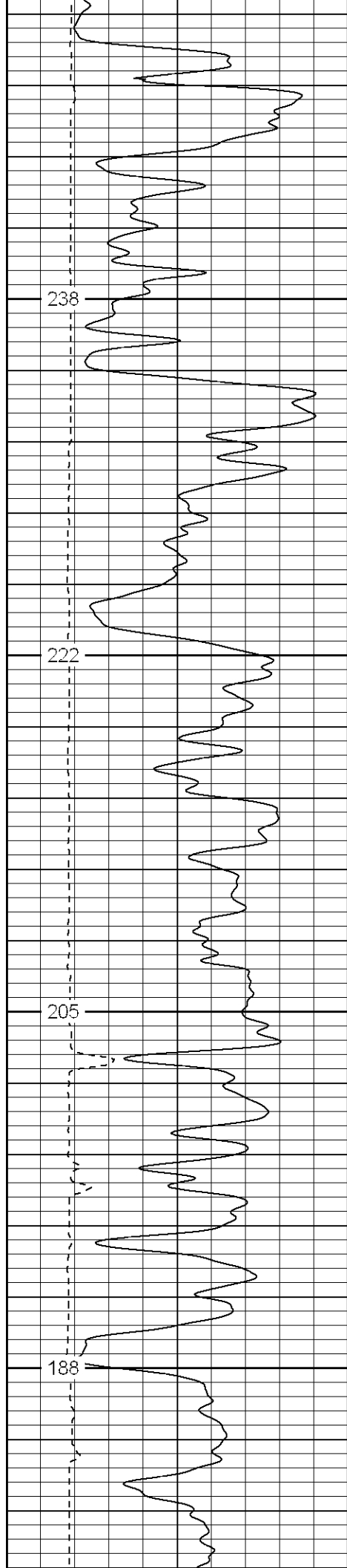
1150

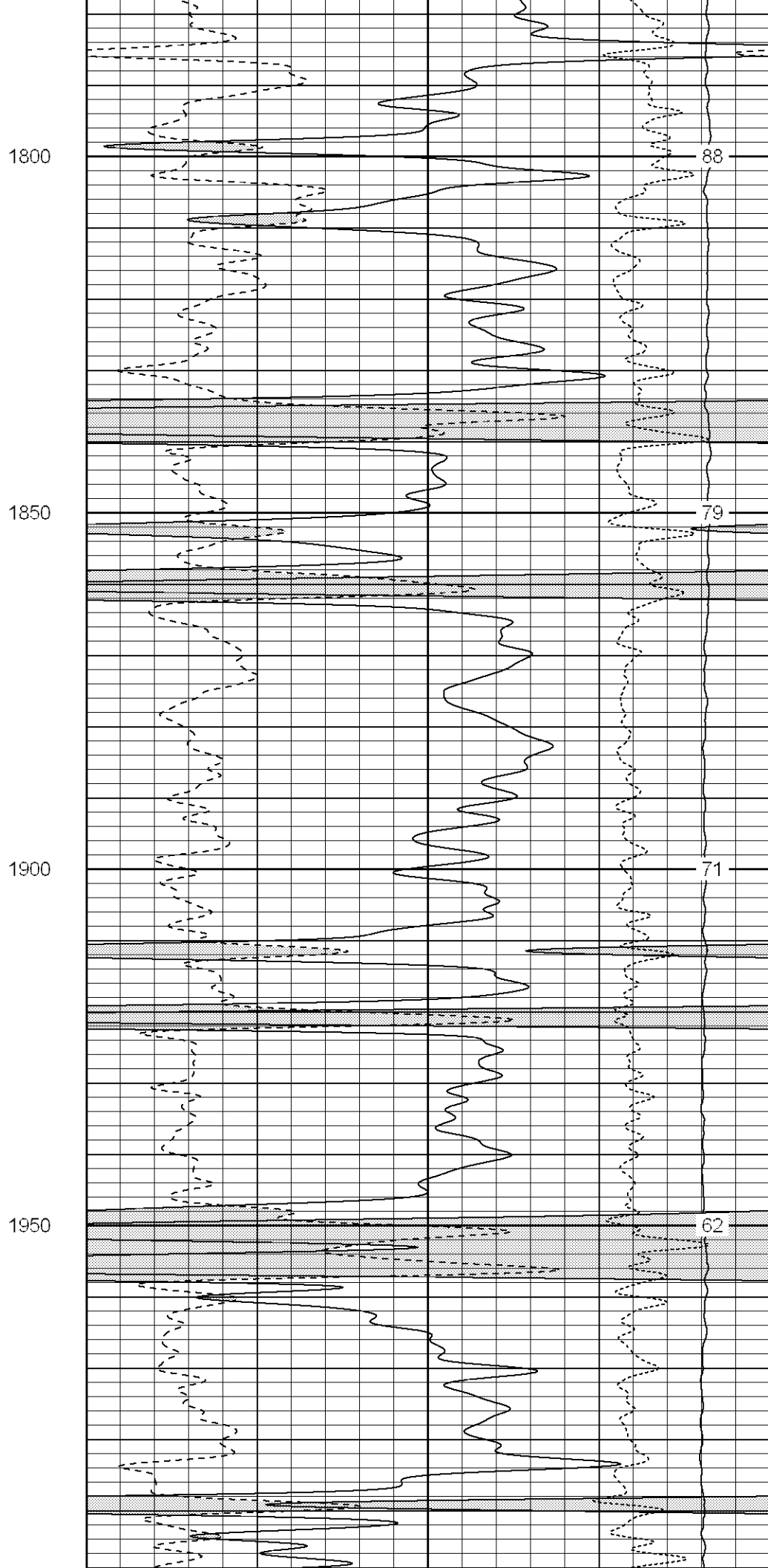
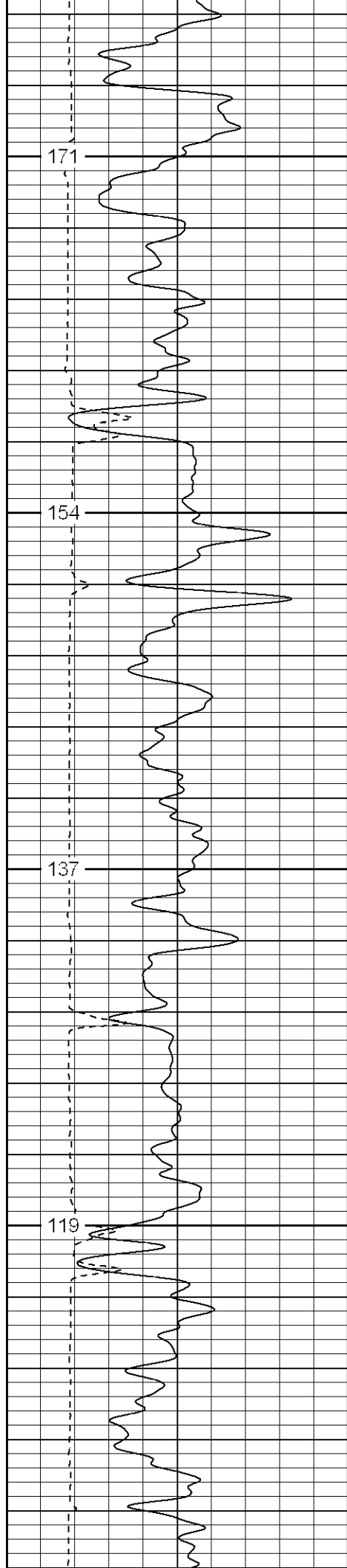
1200

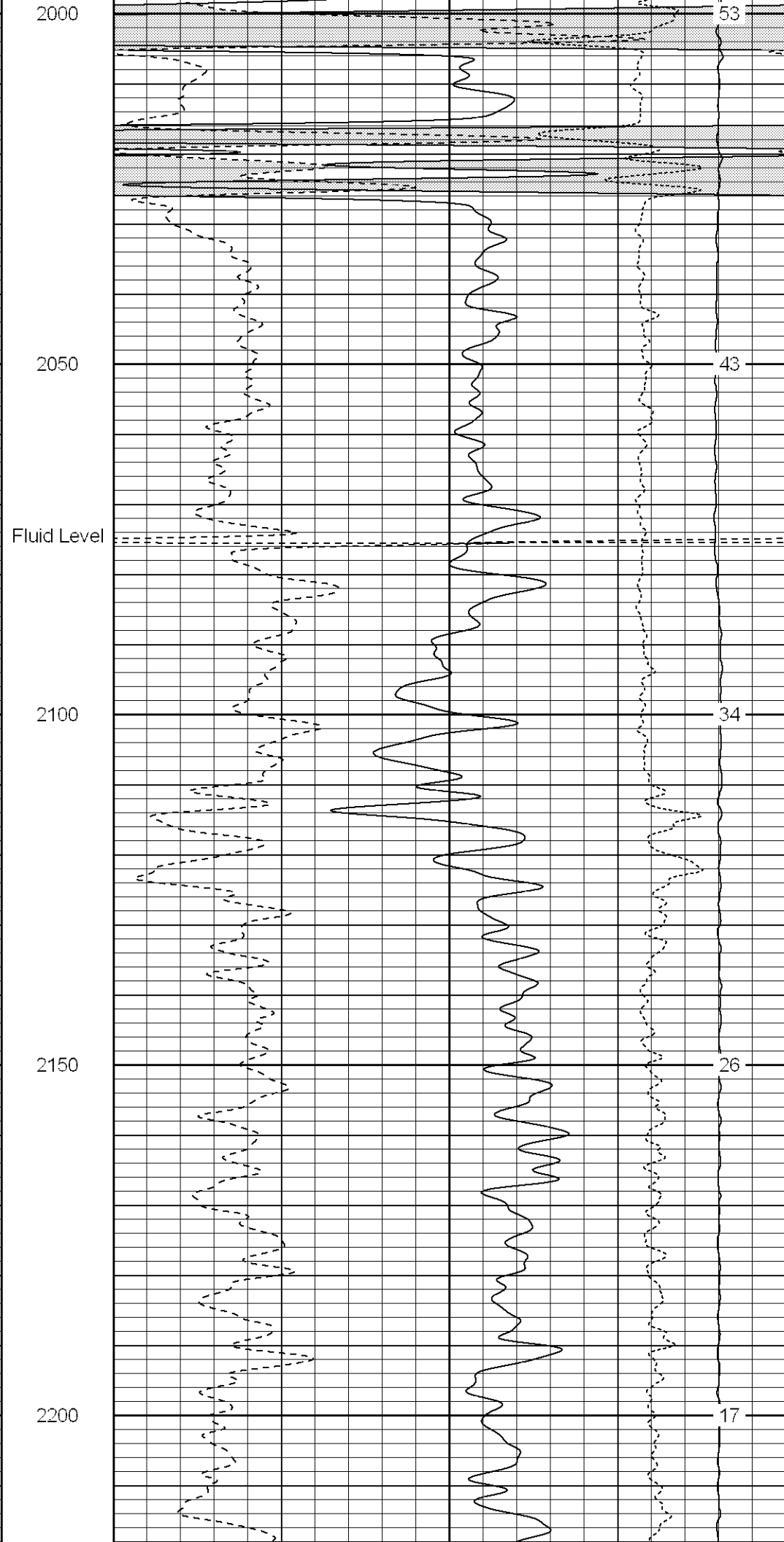
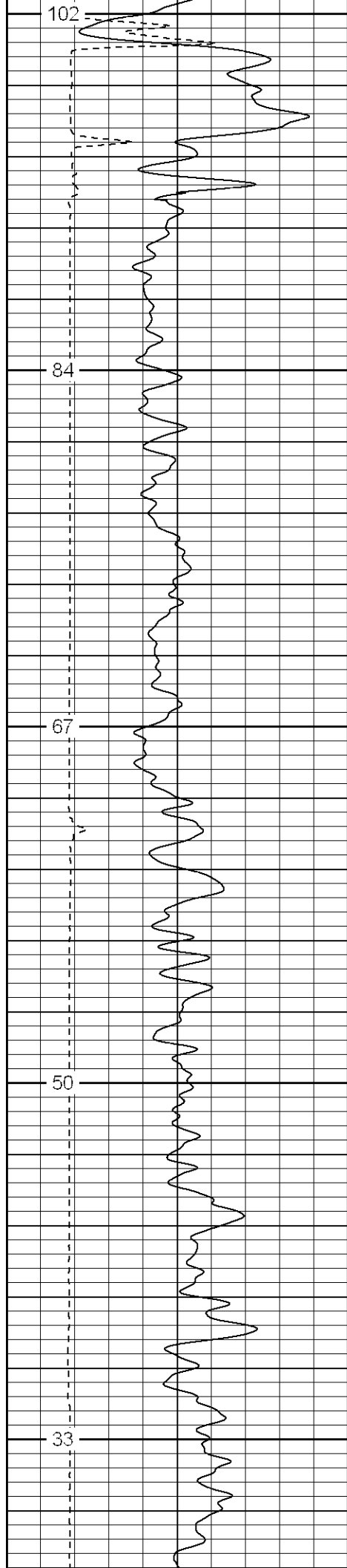
1250

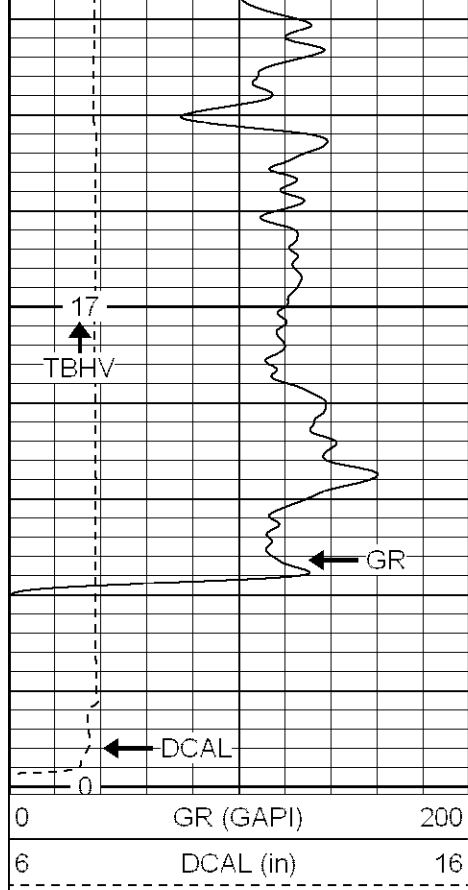
1300





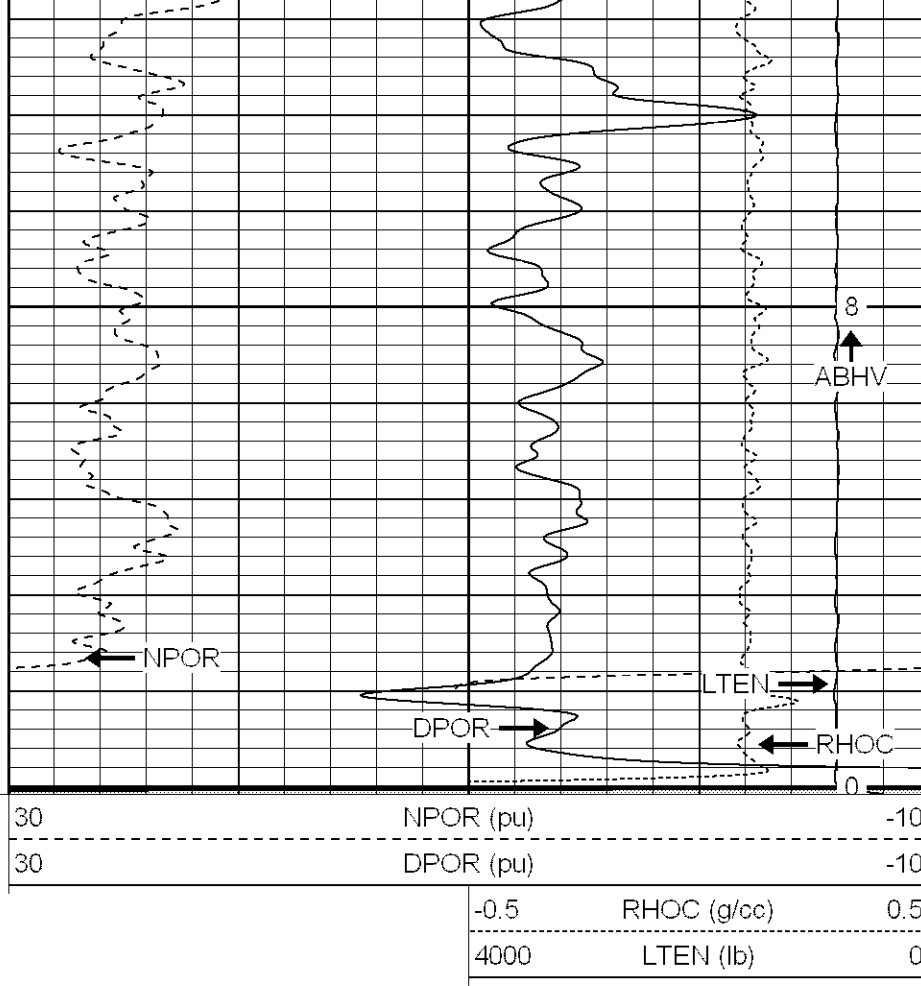






2250

2300



SUPERIOR

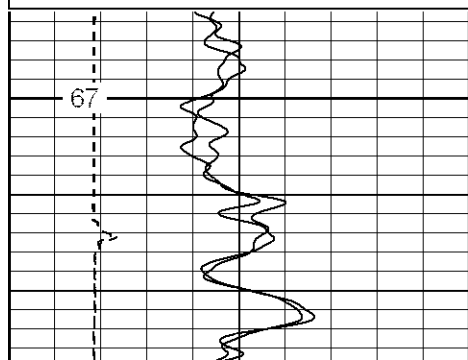
Black Lick, Pa.
Mercer, Pa.
Wooster, Oh.
Cleveland, Ok.
Trinidad, Co.

Repeat Section

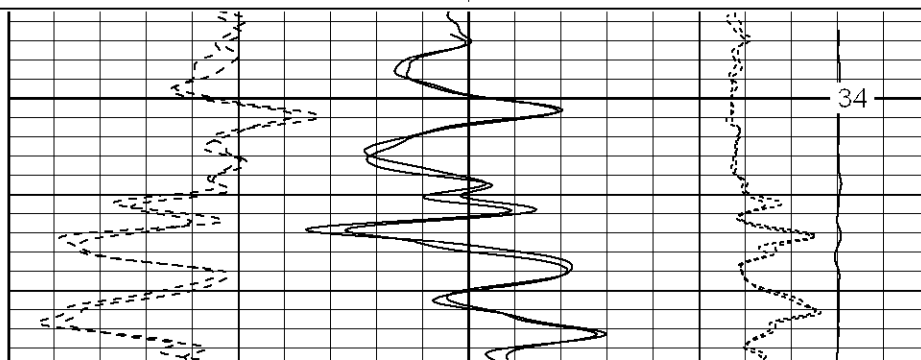
Database File: xtoge2114.db
Dataset Pathname: pass3.1
Presentation Format: cdnl
Dataset Creation: Mon Apr 23 19:13:45 2007 by Calc Open-Cased 061129
Charted by: Depth in Feet scaled 1:240

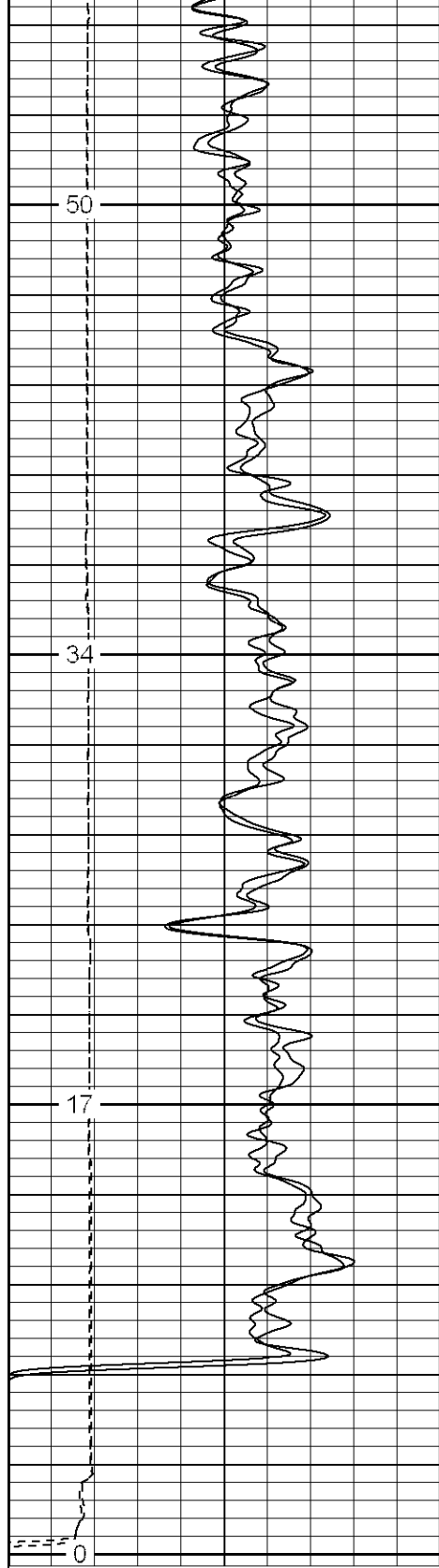
0	GR (GAPI)	200
6	DCAL (in)	16
0	GR-repeat (GAPI)	200
6	DCAL-repeat (in)	16

30	NPOR (pu)	-10
30	DPOR (pu)	-10
30	NPOR-repeat (pu)	-10
30	DPOR-repeat (pu)	-10
-0.5	RHOC (g/cc)	0.5
4000	LTEN (lb)	0
-0.5	RHOC-repeat (g/cc)	0.5



2100





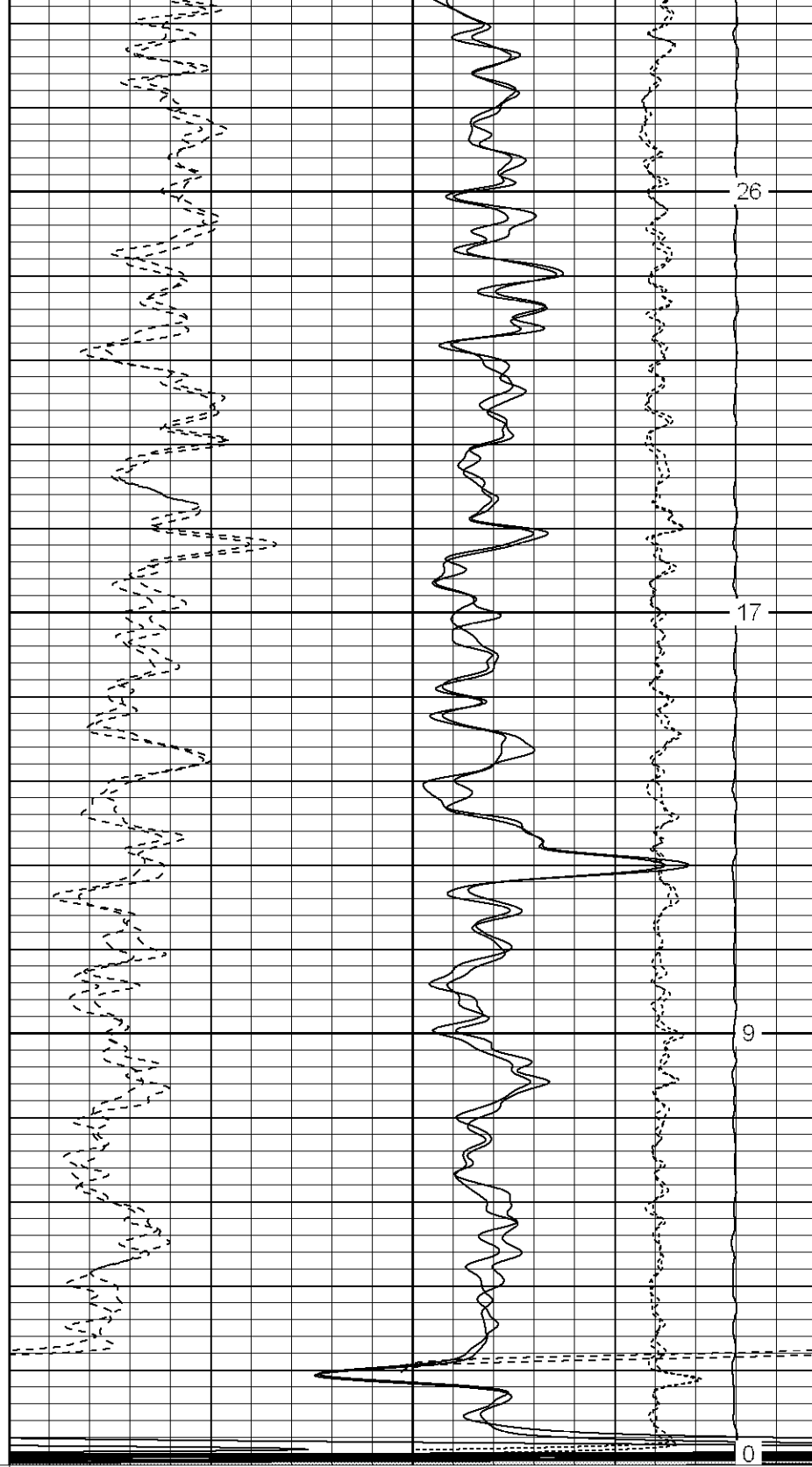
0	GR (GAPI)	200
6	DCAL (in)	16
0	GR-repeat (GAPI)	200
6	DCAL-repeat (in)	16

2150

2200

2250

2300



30	NPOR (pu)	-10
30	DPOR (pu)	-10
30	NPOR-repeat (pu)	-10
30	DPOR-repeat (pu)	-10

-0.5	RHOC (g/cc)	0.5
4000	LTEN (lb)	0
-0.5	RHOC-repeat (g/cc)	0.5



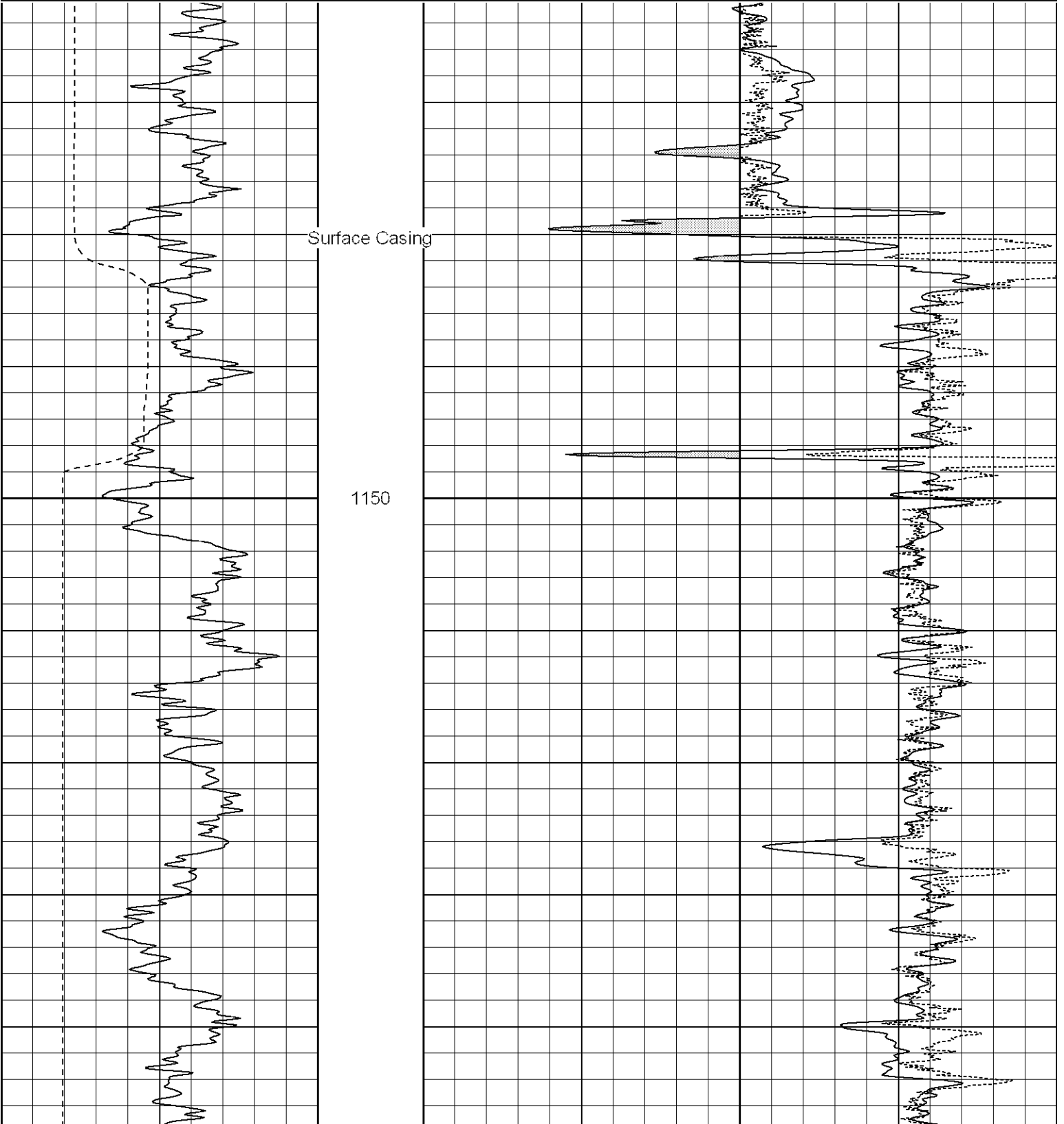
SUPERIOR
Black Lick, Pa.
Mercer, Pa.
Wooster, Oh.
Cleveland, Ok.
Trinidad, Co.

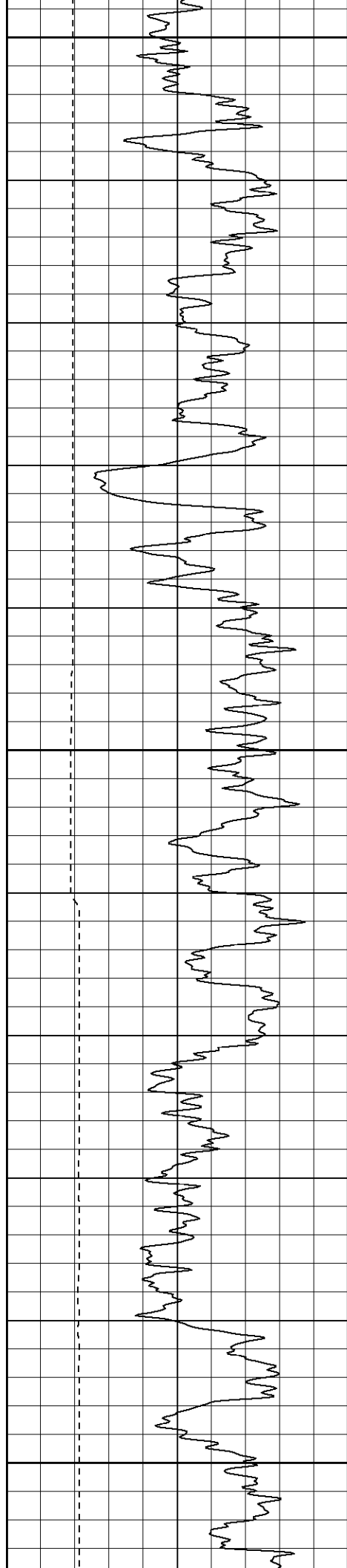
High Resolution Pass

Database File: xtoge2114.db
Dataset Pathname: pass4.2
Presentation Format: cdlhr
Dataset Creation: Tue Apr 24 07:09:34 2007 by Calc Open-Cased 061129
Charted by: Depth in Feet scaled 1:120

0 GR (GAPI) 200
6 DCAL (in) 16

1 RHOB (g/cc) 3
-0.5 RHOC (g/cc) 0.5

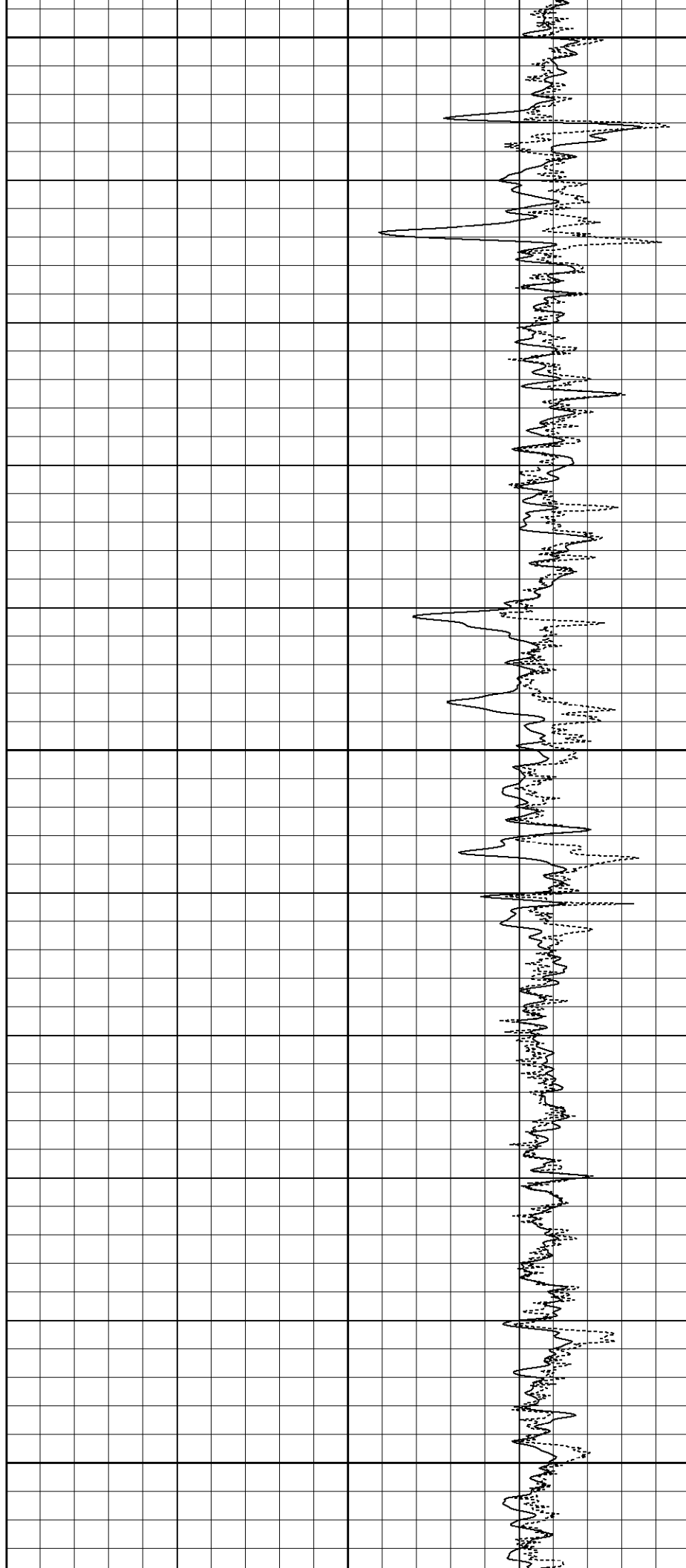


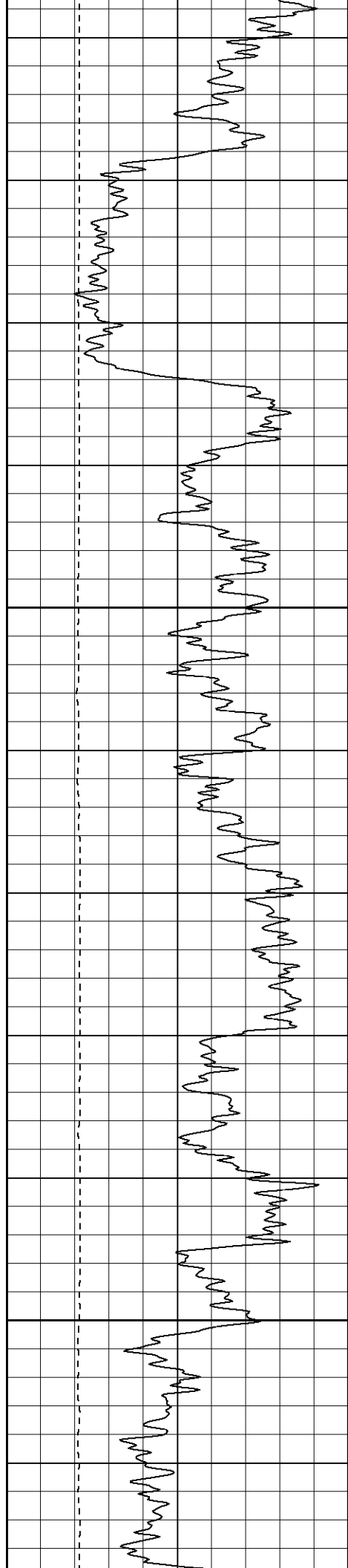


1200

1250

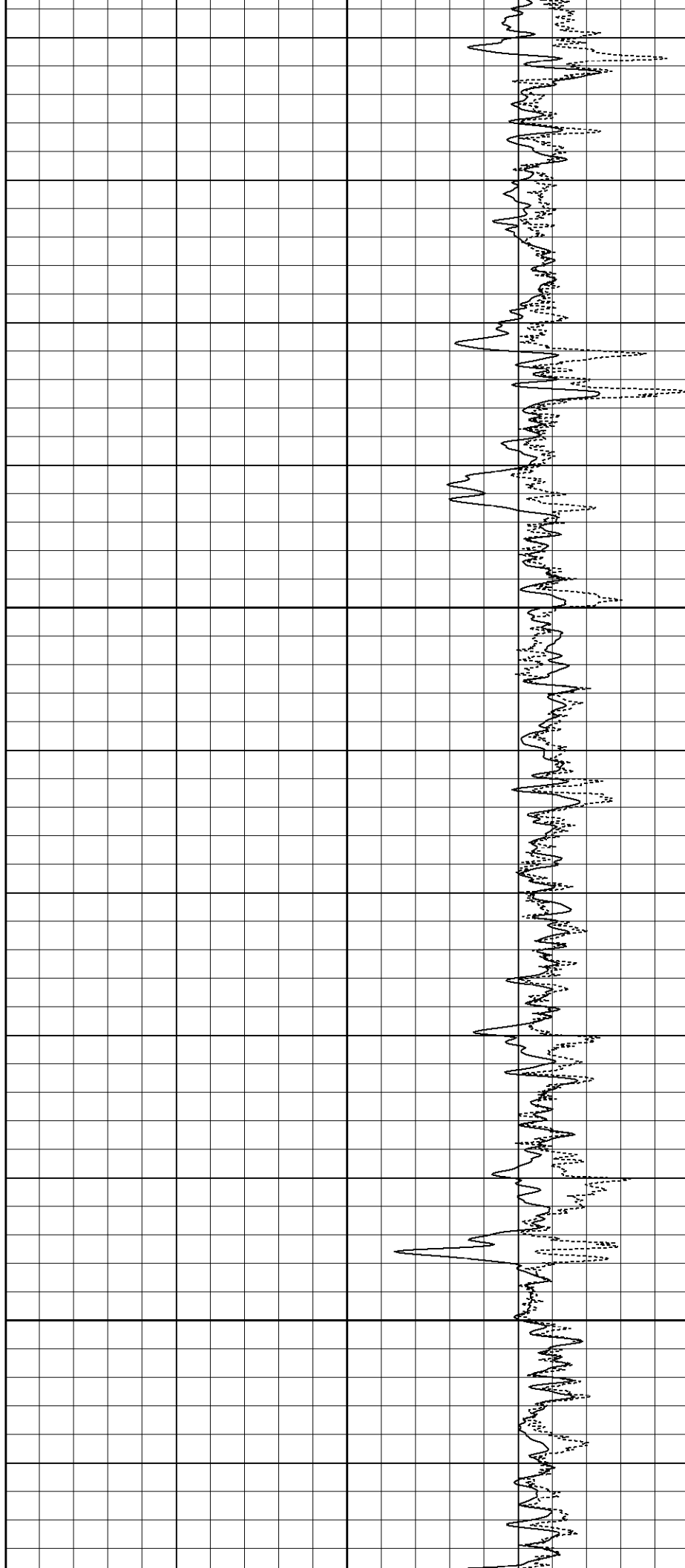
1300

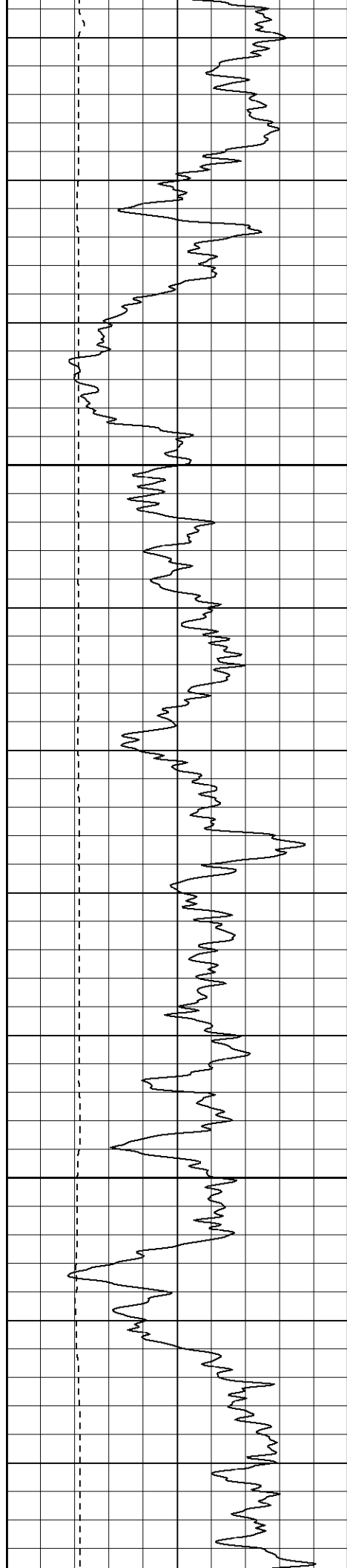




1350

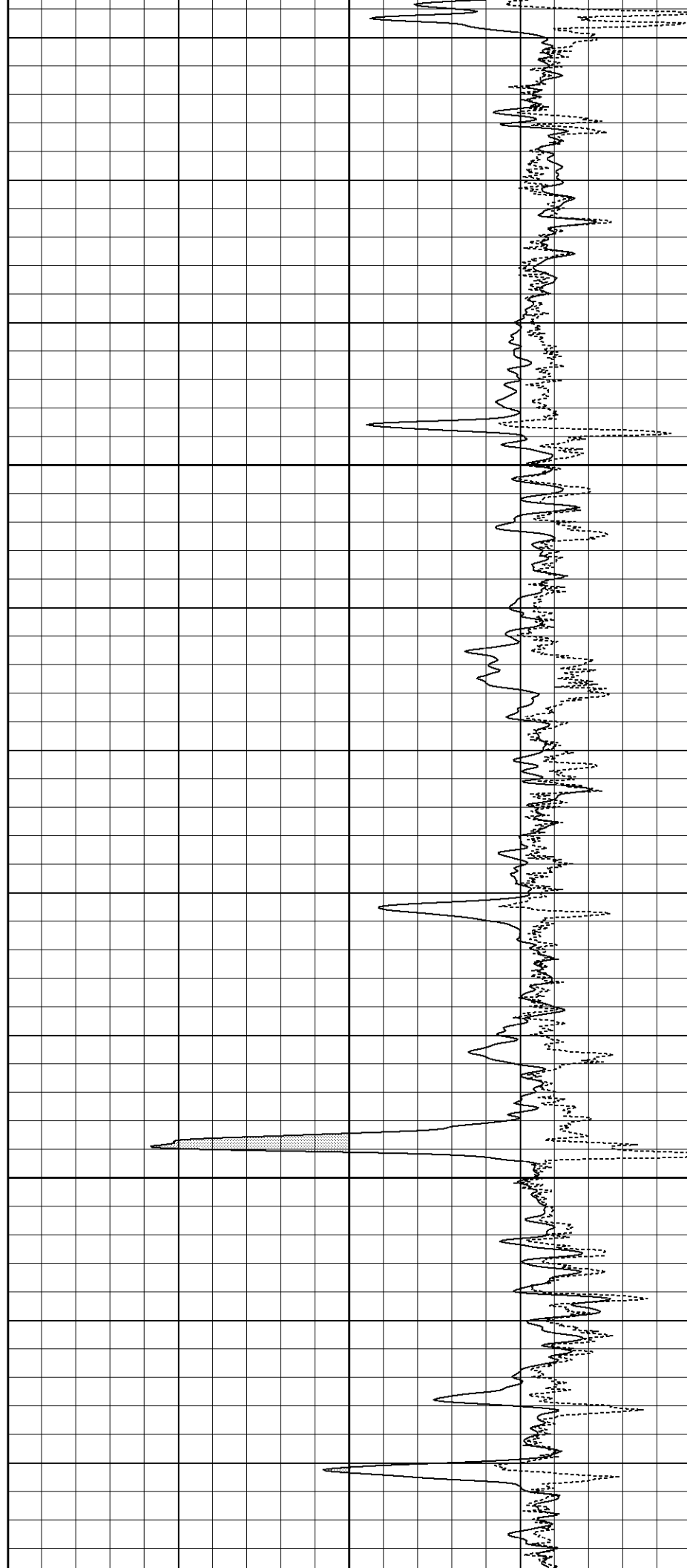
1400

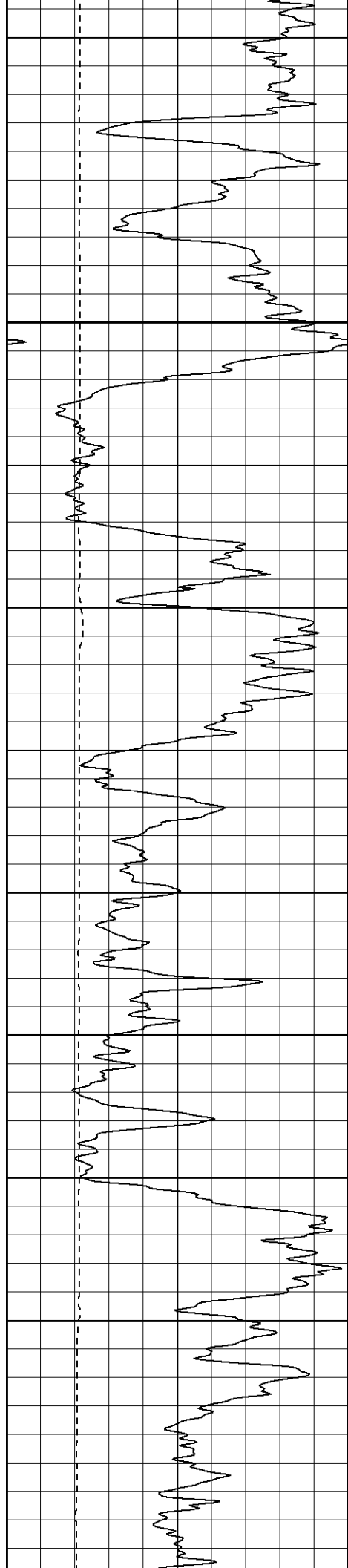




1450

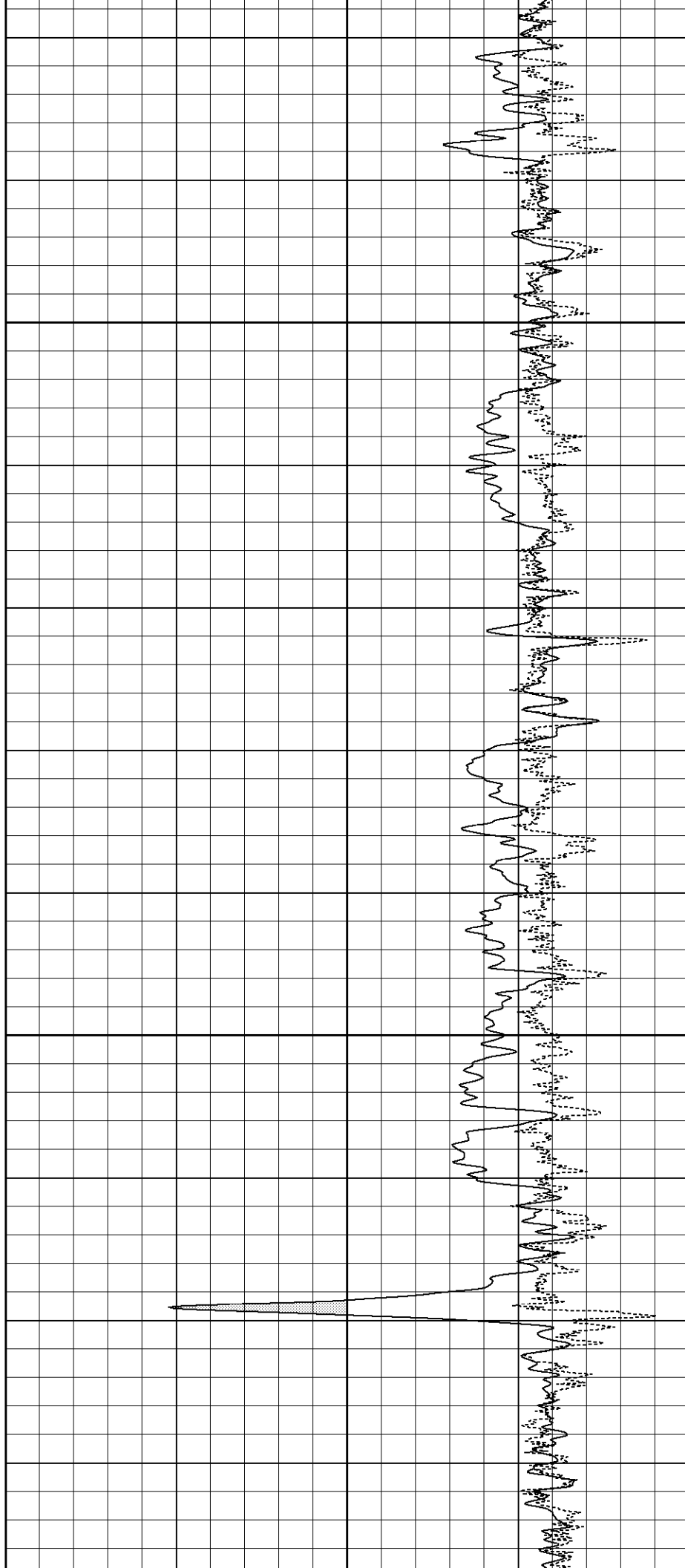
1500

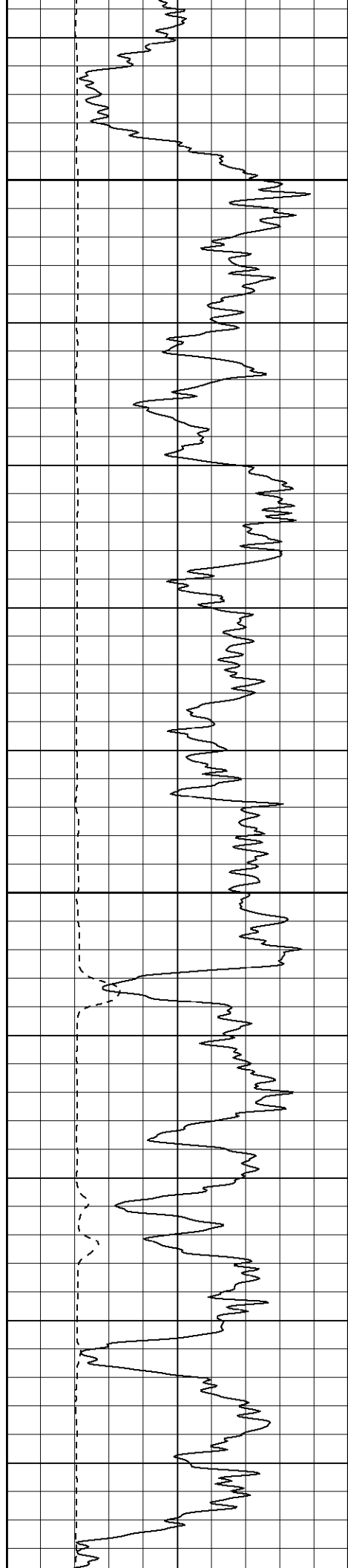




1550

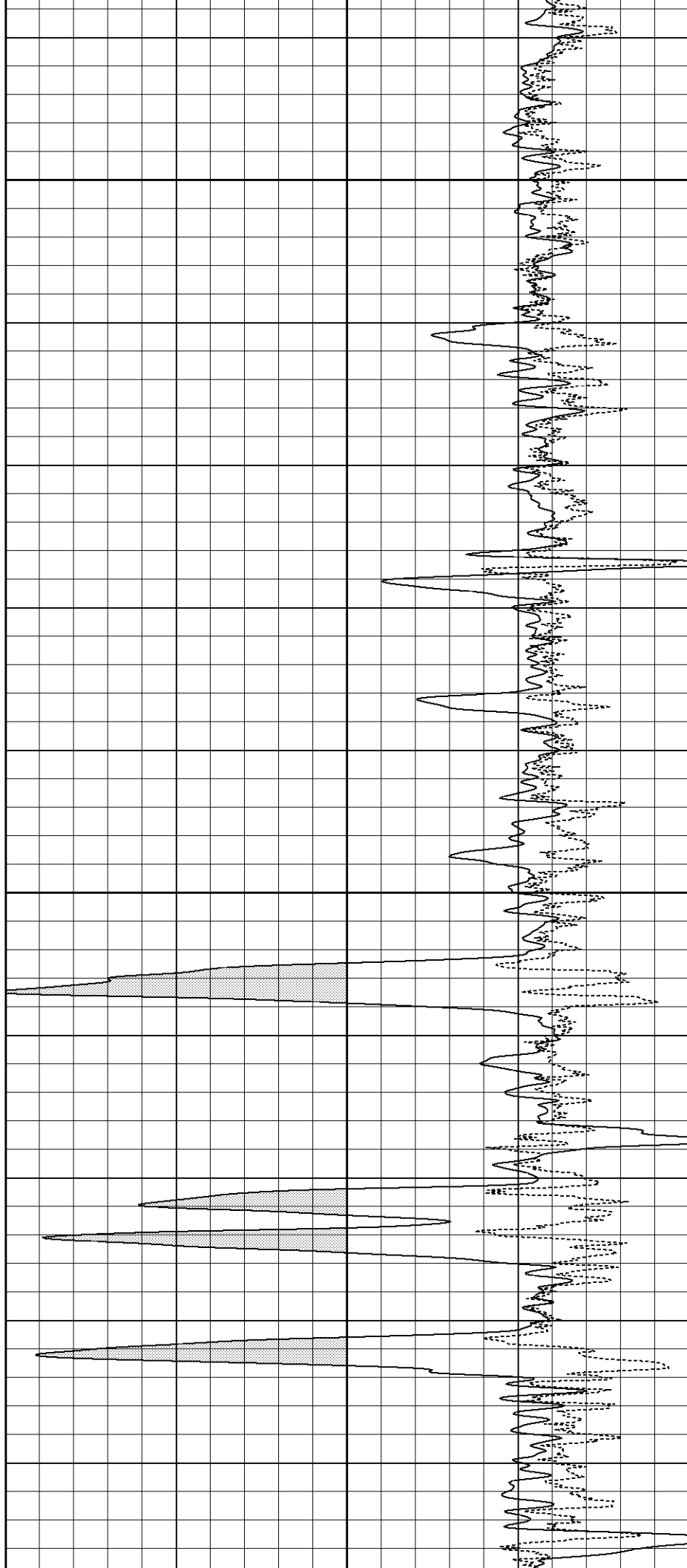
1600





1650

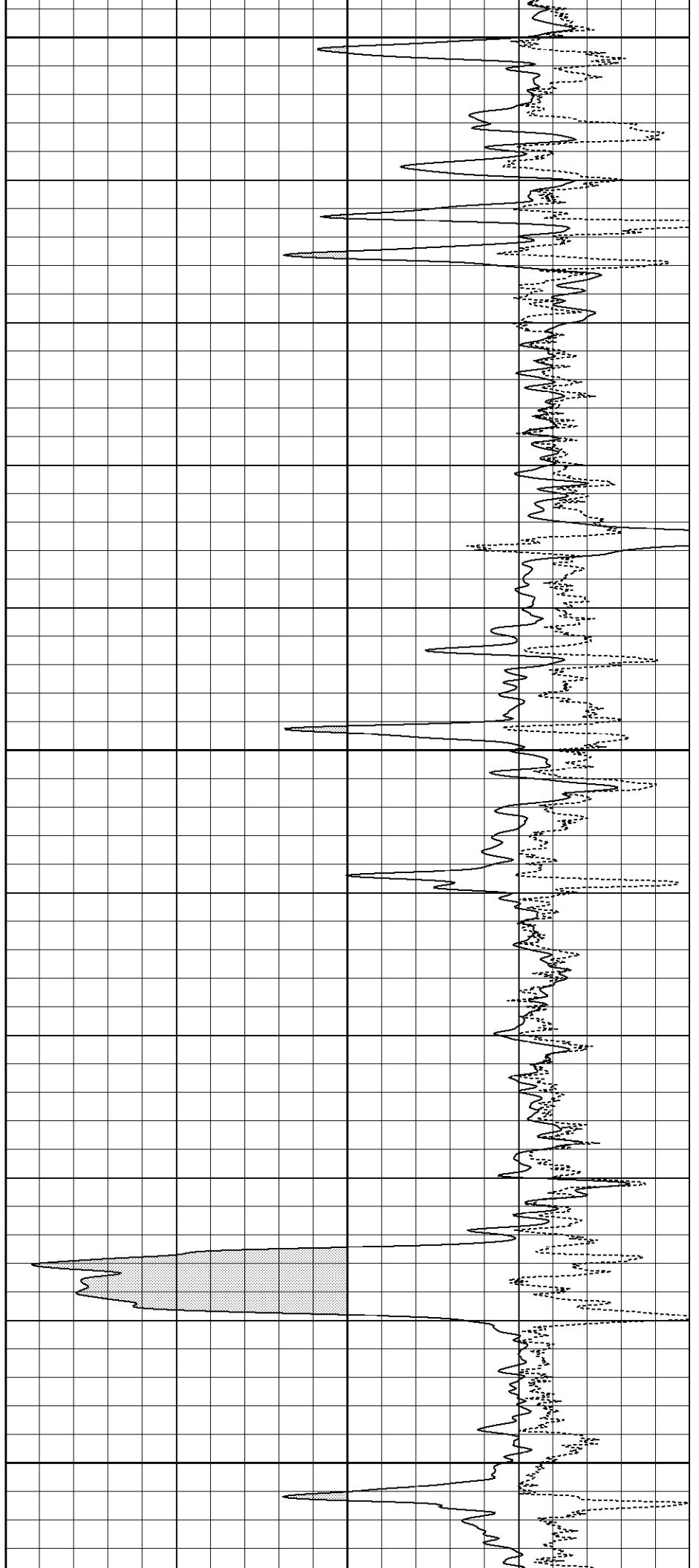
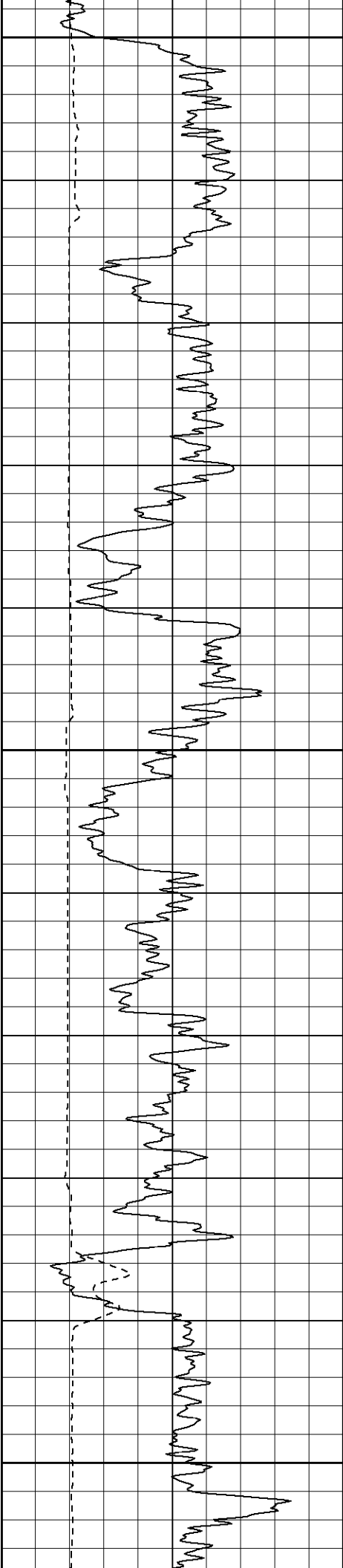
1700

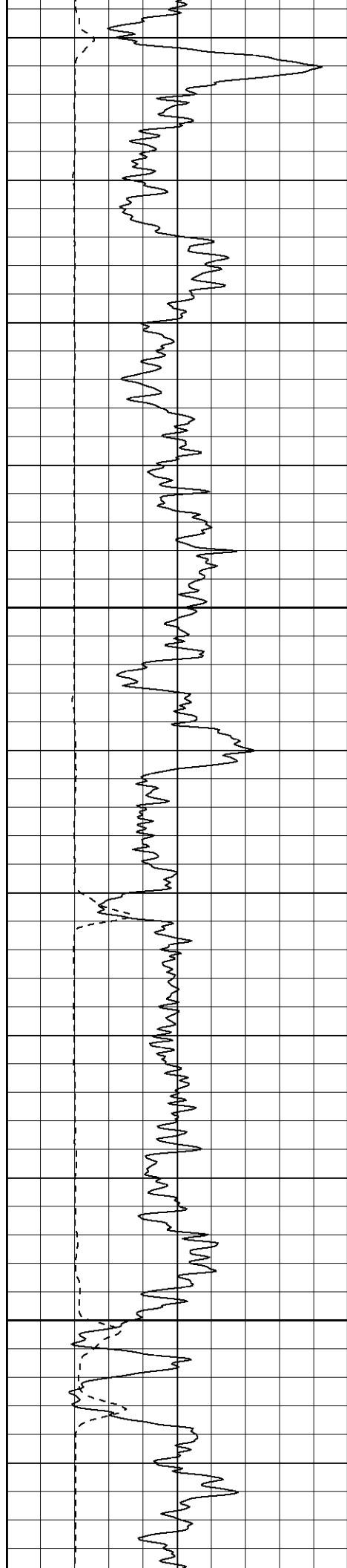


1750

1800

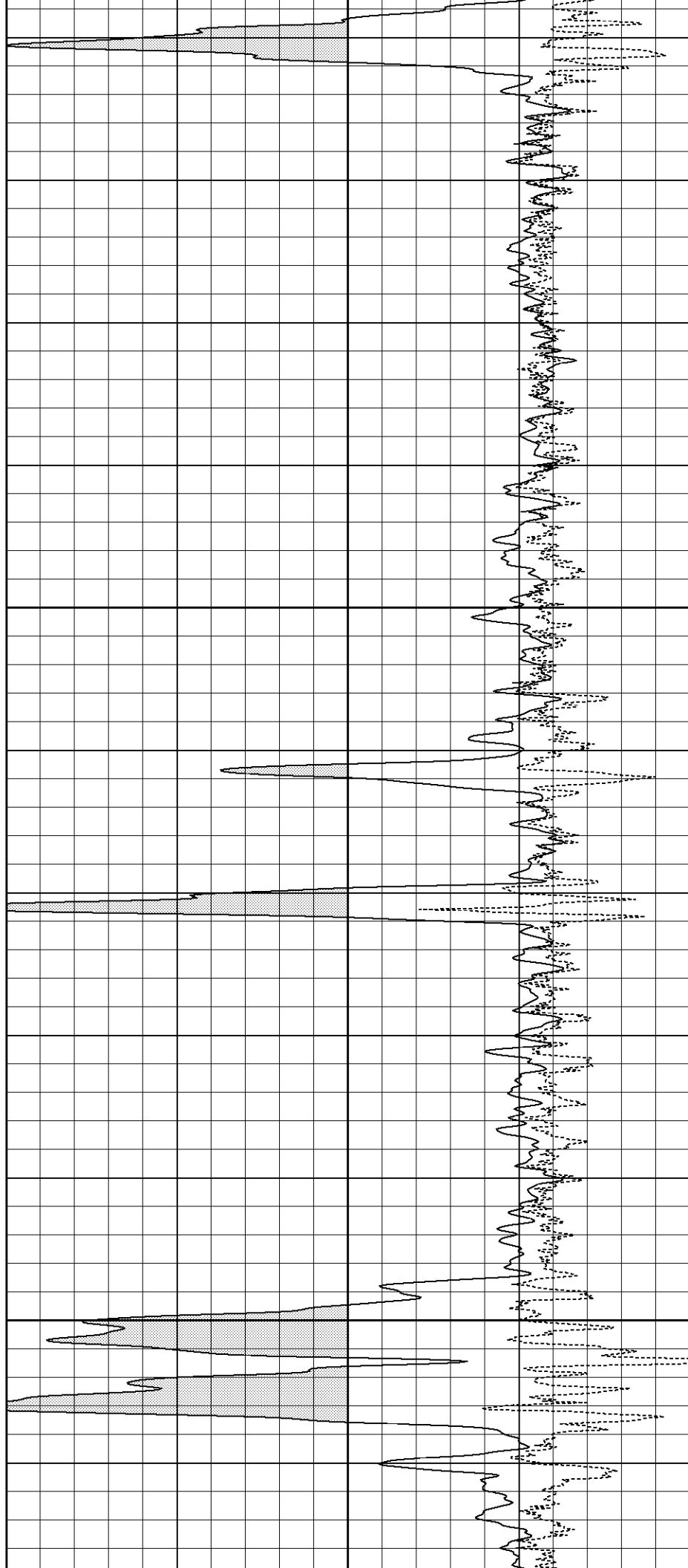
1850

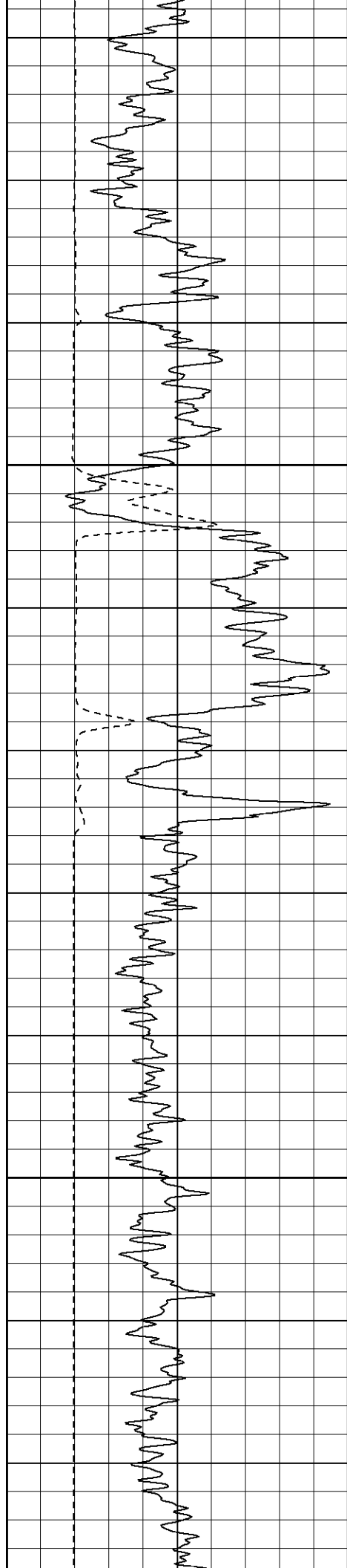




1900

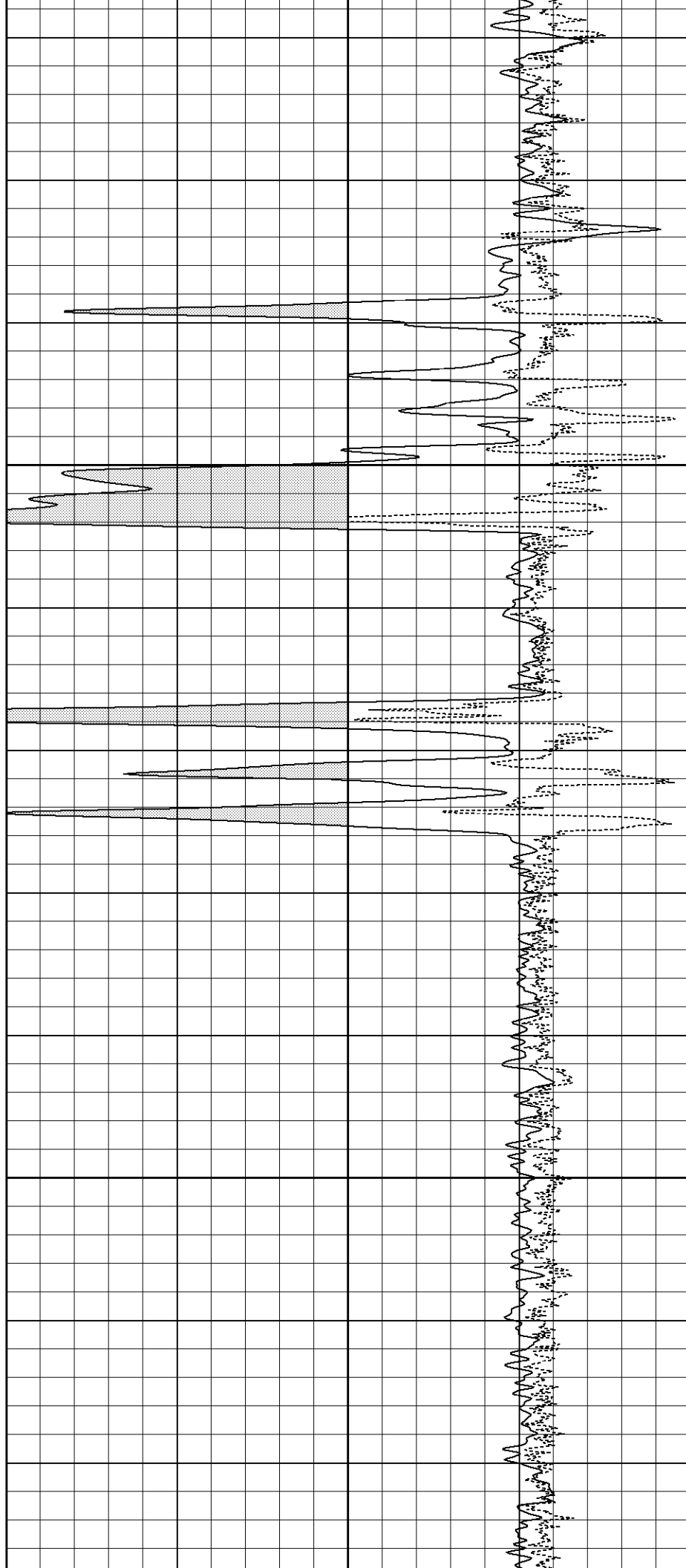
1950

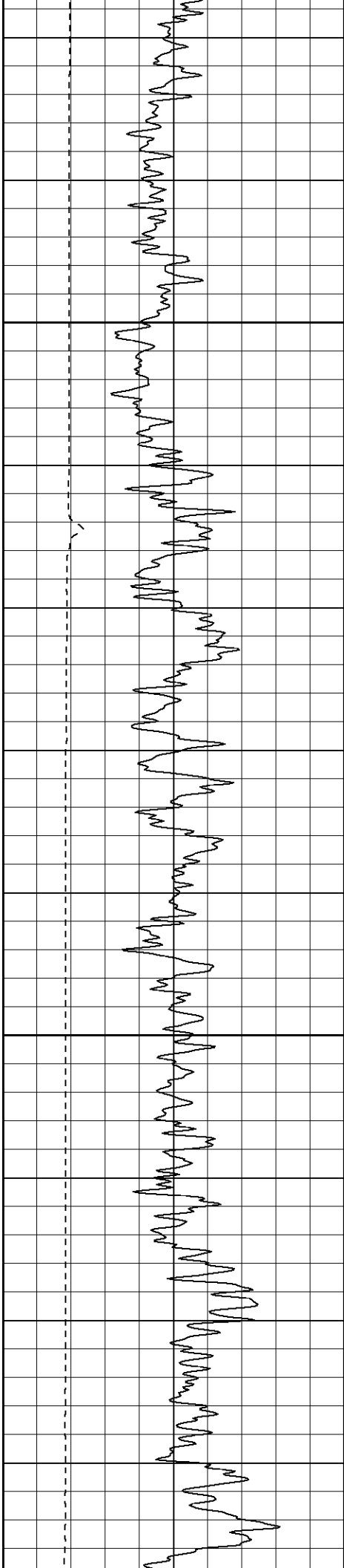




2000

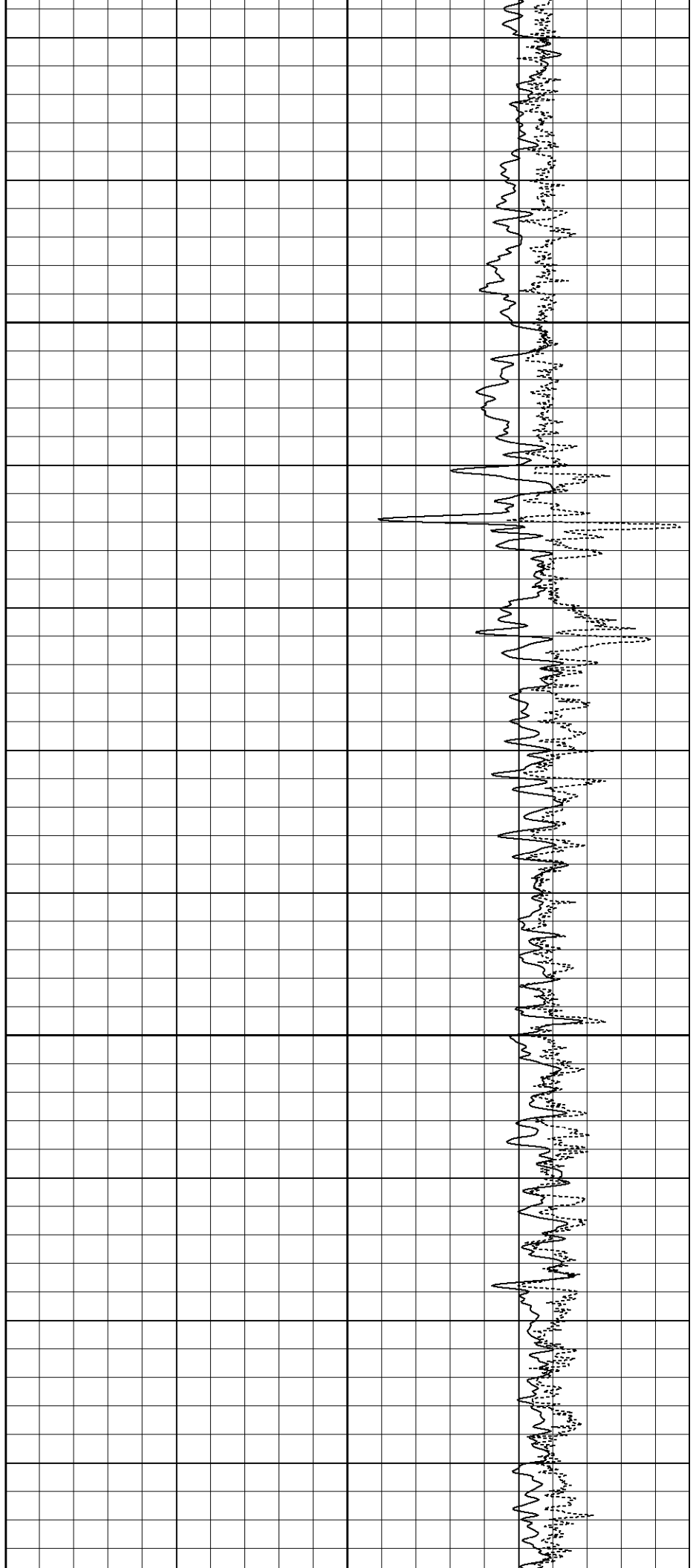
2050

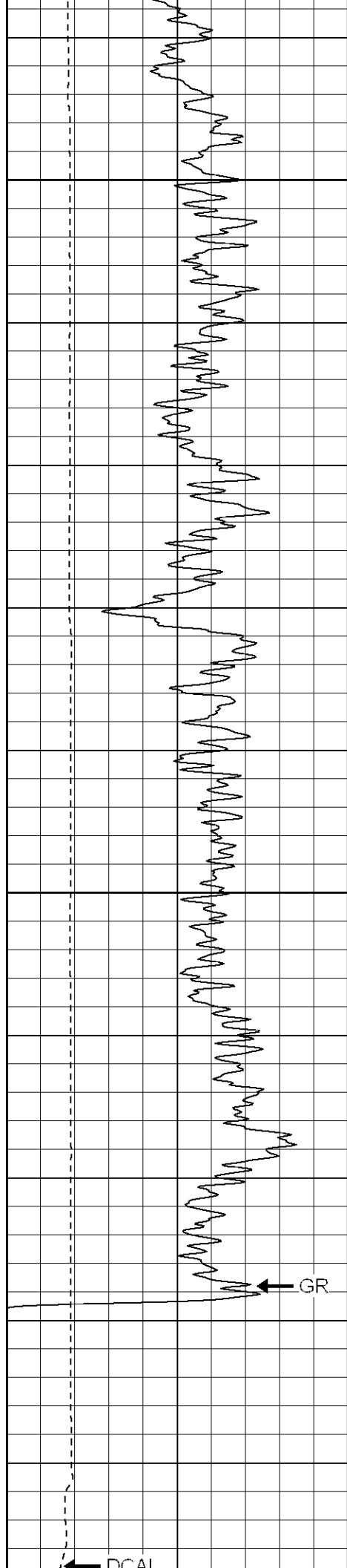




2100

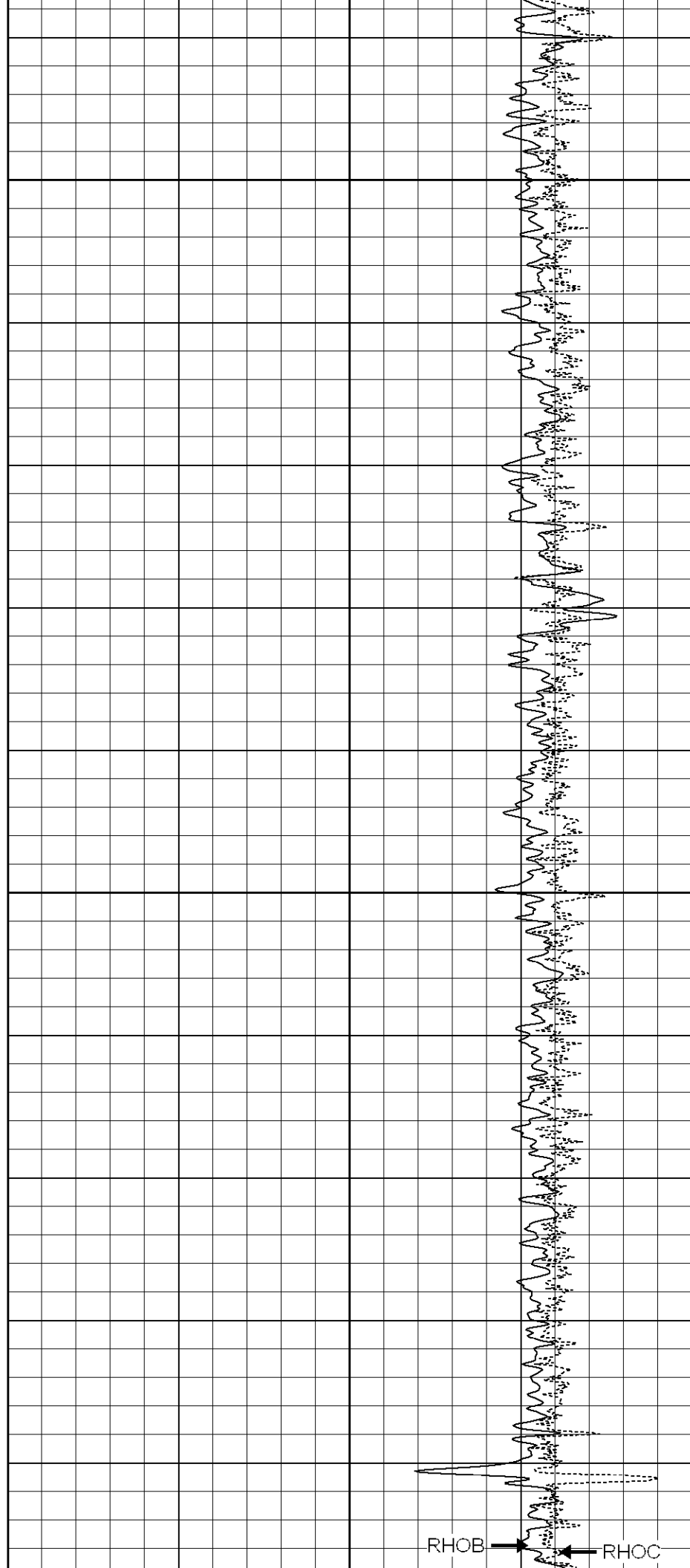
2150



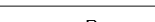


2200

2250



RHOB RHOC

Sensor	Offset (ft)	Schematic	Description	Len (ft)	OD (in)	Wt (lb)
NEU	12.44		None	0.75	1.50	5.00
			NEU-G (5145) Gearhart Epithermal	5.75	3.50	85.00

