

Company: FOREST OIL CORPORATION

Well: SOUTH HOLYOKE SWD 1B-25-7-45

Field: SOUTH HOLYOKE

County: PHILLIPS State: COLORADO

CEMENT BOND
GAMMA RAY CCL LOG

County: PHILLIPS

Field: SOUTH HOLYOKE

Location: NE NE

Well: SOUTH HOLYOKE SWD 1B-25-

Company: FOREST OIL CORPORATION

LOCATION

NE NE

225' FSL & 227' FEL

Elev.: K.B. 3762 ft

G.L. 3757 ft

D.F. 3759 ft

Permanent Datum: _____

Log Measured From: KELLY BUSHING

Drilling Measured From: KELLY BUSHING

GROUND LEVEL

Elev.: 3757 ft

5.0 ft above Perm. Datum

API Serial No. 05-096-06169-0C

Section 25

Township 7N

Range 45W

PVT DATA			
Oil Density	Run 1	Run 2	Run 3
Water Salinity			
Gas Gravity			
Bo			
Bw			
1/Bq			
Bubble Point Pressure			
Bubble Point Temperature			
Solution GOR			
Maximum Deviation			
CEMENTING DATA			
Primary/Squeeze	Primary		
Casing String No			
Lead Cement Type			
Volume			
Density			
Water Loss			
Additives			
Tail Cement Type			
Volume			
Density			
Water Loss			
Additives			
Expected Cement Top			
Logging Date			
Run Number			
Depth Driller			
Schlumberger Depth			
Bottom Log Interval			
Top Log Interval			
Casing Fluid Type			
Salinity			
Density			
Fluid Level			
BIT/CASING/TUBING STRING			
Bit Size			
From			
To			
Casing/Tubing Size			
Weight			
Grade			
From			
To			
Maximum Recorded Temperatures			
Logger On Bottom			
Unit Number	Location		
Recorded By			
Witnessed By			

Logging Date23-Jan-2008

Run Number1

Depth Driller4207 ft

Schlumberger Depth4154 ft

Bottom Log Interval4154 ft

Top Log Interval100 ft

Casing Fluid TypeWATER

Salinity

Density

Fluid Level10 ft

BIT/CASING/TUBING STRING

Bit Size7.875 in

From

To

Casing/Tubing Size5.500 in

Weight17 lbm/ft

Grade

From

To

Maximum Recorded Temperatures147 degF

Logger On Bottom23-Jan-2008

Unit Number318

LocationFT MORGAN CO

Recorded ByHARLING

Witnessed ByGOWARD

Logging Date			
Run Number			
Depth Driller			
Schlumberger Depth			
Bottom Log Interval			
Top Log Interval			
Casing Fluid Type			
Salinity			
Density			
Fluid Level			
BIT/CASING/TUBING STRING			
Bit Size			
From			
To			
Casing/Tubing Size			
Weight			
Grade			
From			
To			
Maximum Recorded Temperatures			
Logger On Bottom			
Unit Number	Location		
Recorded By			
Witnessed By			

THE USE OF AND RELIANCE UPON THIS RECORDED-DATA BY THE HEREIN NAMED COMPANY (AND ANY OF ITS AFFILIATES, PARTNERS, REPRESENTATIVES, AGENTS, CONSULTANTS AND EMPLOYEES) IS SUBJECT TO THE TERMS AND CONDITIONS AGREED UPON BETWEEN SCHLUMBERGER AND THE COMPANY, INCLUDING: (a) RESTRICTIONS ON USE OF THE RECORDED-DATA; (b) DISCLAIMERS AND WAIVERS OF WARRANTIES AND REPRESENTATIONS REGARDING COMPANY'S USE OF AND RELIANCE UPON THE RECORDED-DATA; AND (c) CUSTOMER'S FULL AND SOLE RESPONSIBILITY FOR ANY INFERENCE DRAWN OR DECISION MADE IN CONNECTION WITH THE USE OF THIS RECORDED-DATA.

PSPT-A/B
PSC-A
PSPT-A 1876

PSTC
PBMS-A
10k_Sapphire_Mano
RTD_Thermometer
GR
CCL
PBMS

GR 28.0
Well_Temp 24.9
Manometer 24.8
CCL 24.2
PBMS PSTC 23.4

SCMT-CB
SCMC-CA 8213
SECH-CA 8211
CMIR-AG
SCMS-CB 8258
SCMX-CA 8213
AH-278
TTG-C

23.4

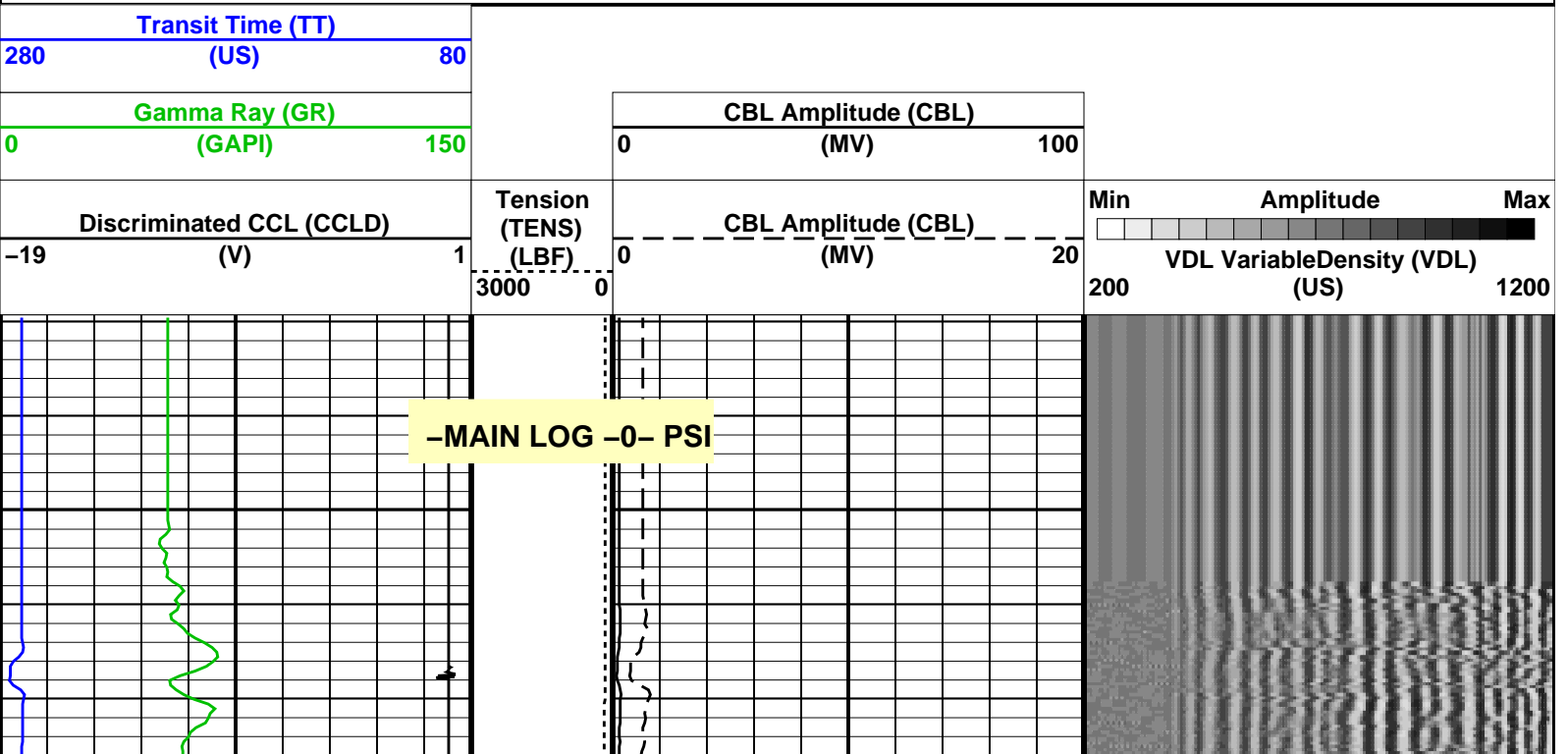
DT 14.3
CBL5 DTSC 12.8
CBL3 11.8
MAP 11.3
AUX 10.3

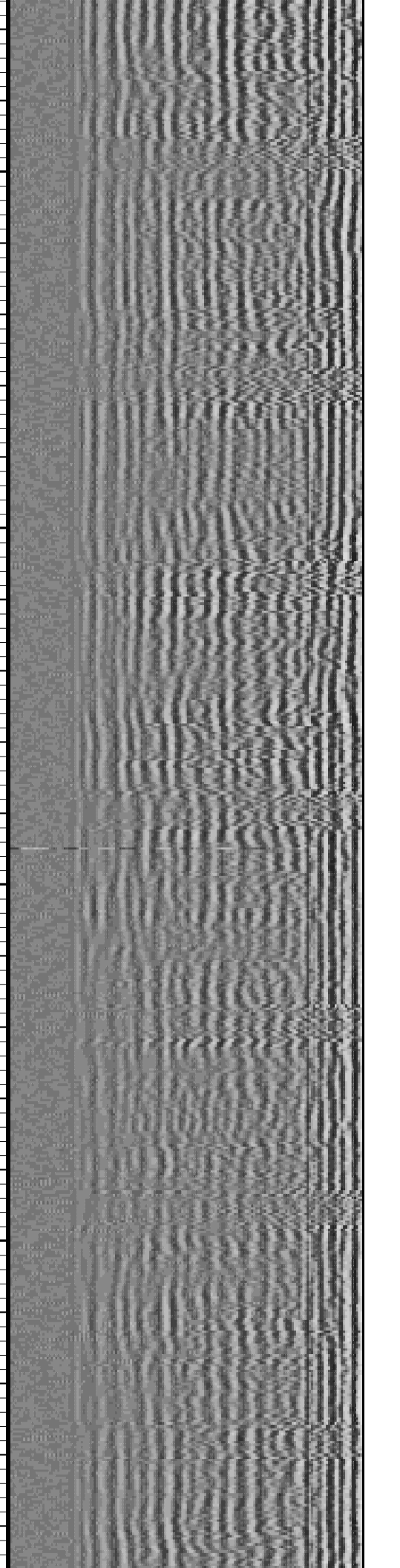
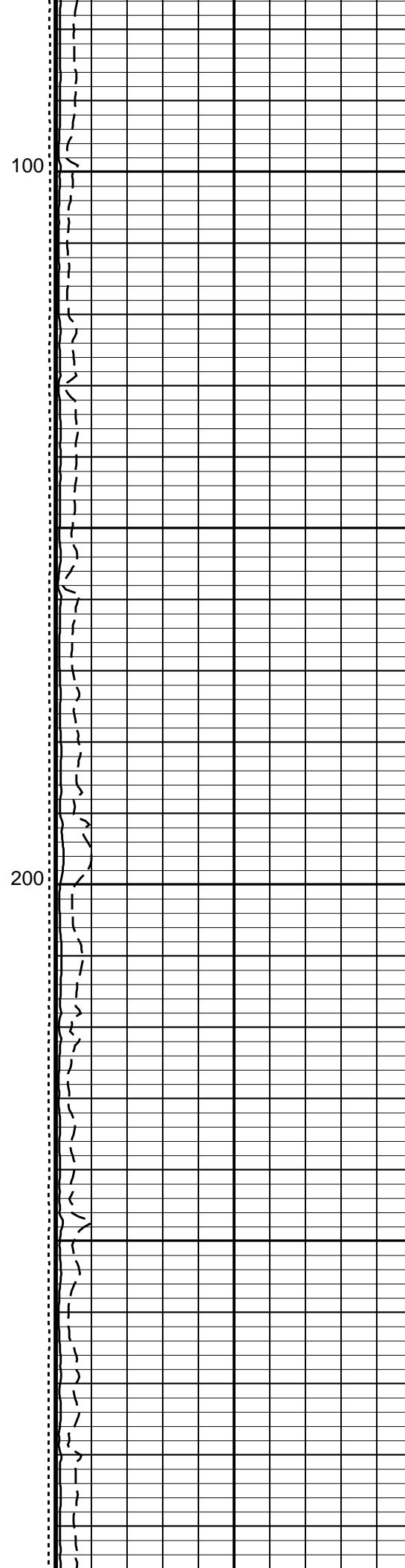
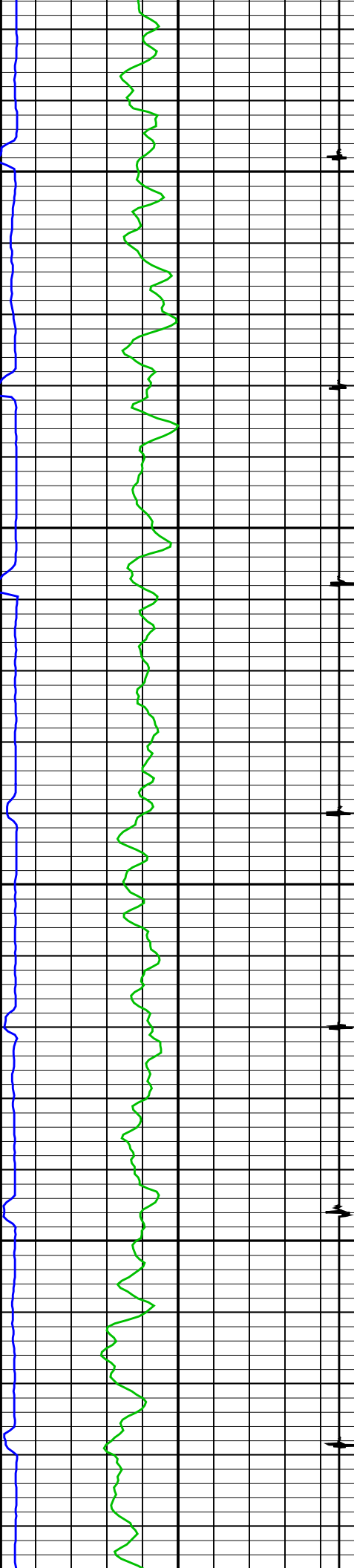
HV
Tension SCMT 0.0
TOOL ZERO

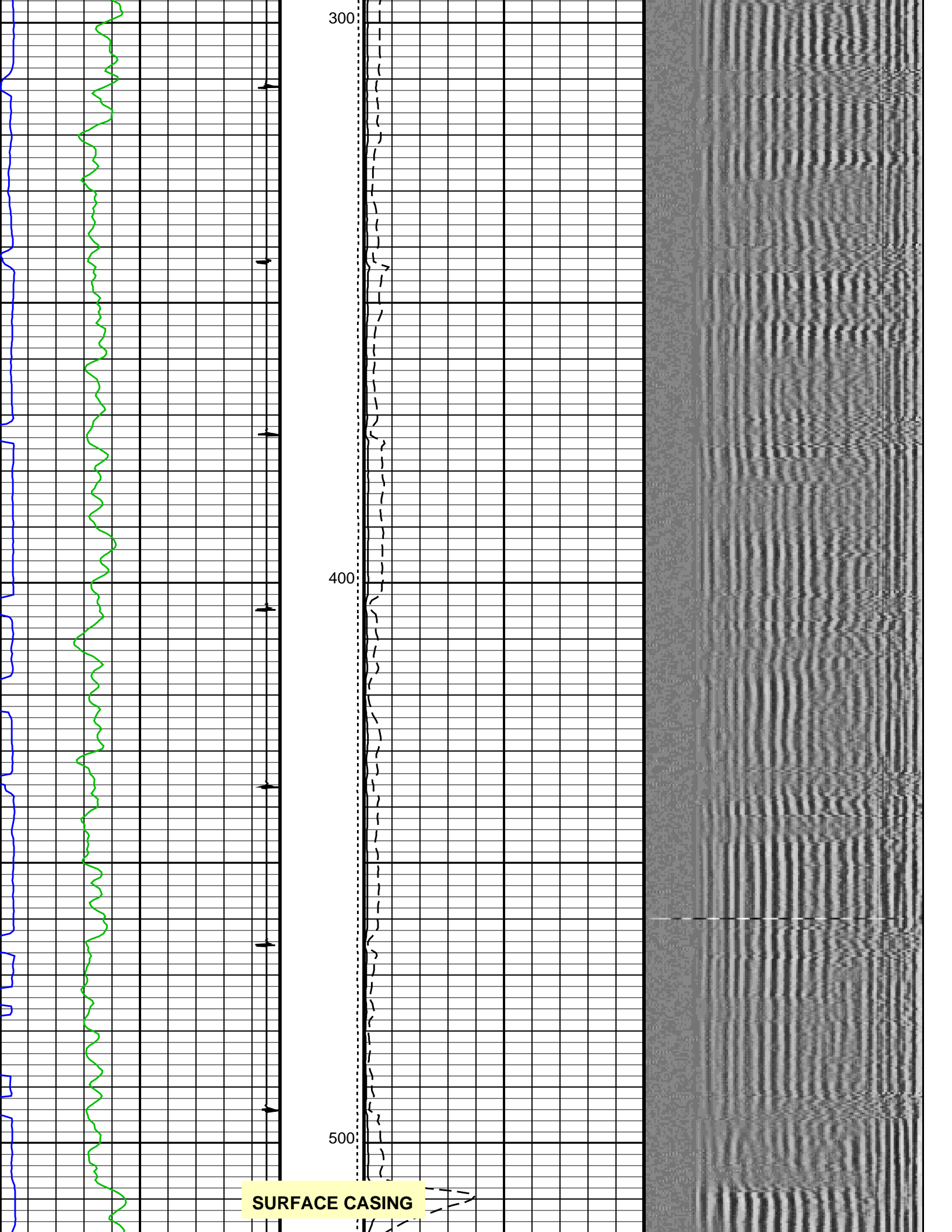
MAXIMUM STRING DIAMETER 1.69 IN
MEASUREMENTS RELATIVE TO TOOL ZERO
ALL LENGTHS IN FEET

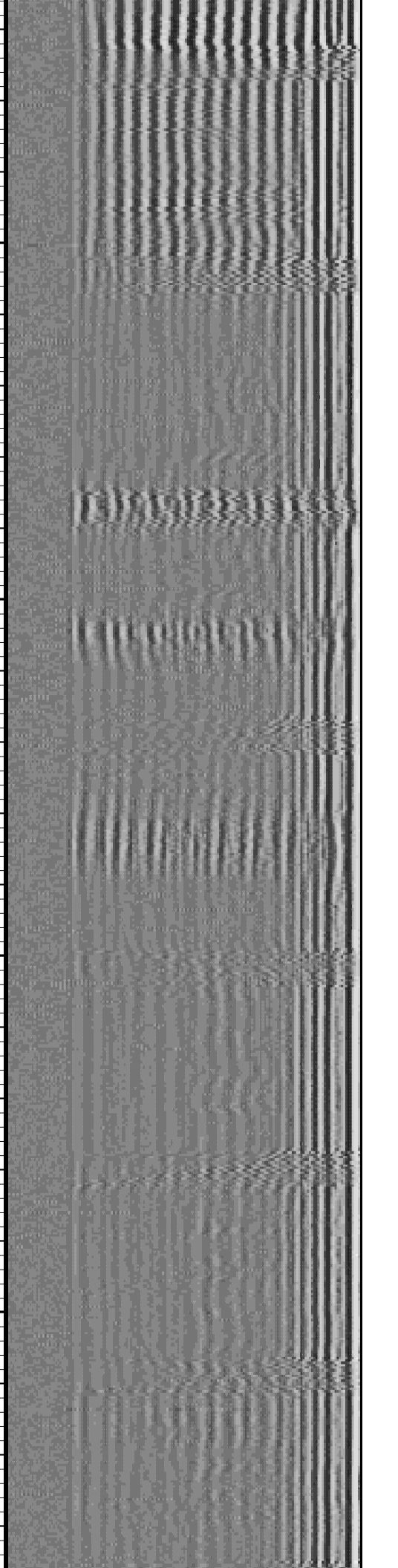
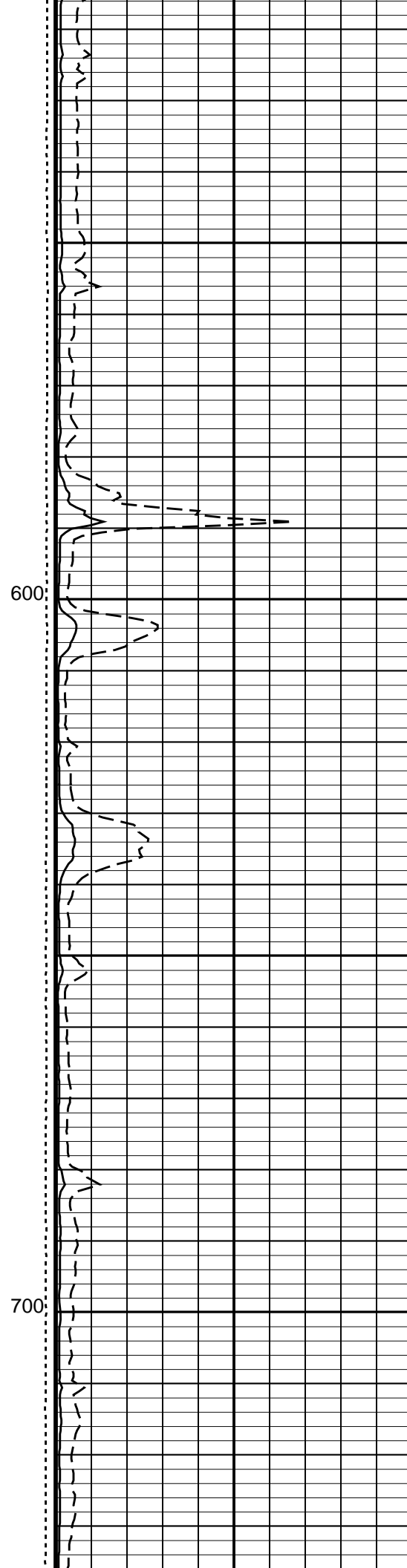
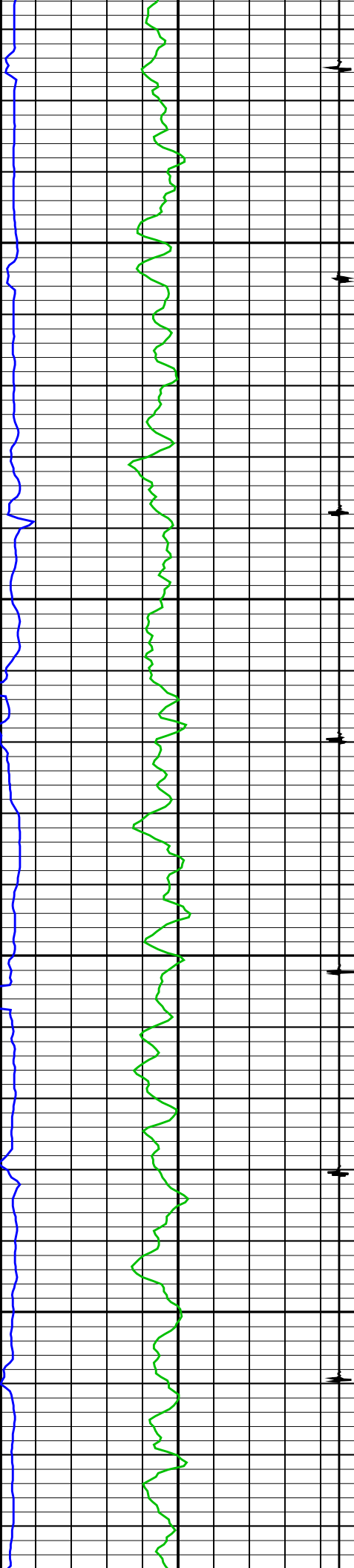
Input DLIS Files						
DEFAULT	SCMT_PSP_002LUP	FN:1	PRODUCER	23-Jan-2008 07:40	4176.0 FT	45.5 FT
Output DLIS Files						
DEFAULT	SCMT_PSP_004PUP	FN:3	PRODUCER	23-Jan-2008 08:48	4179.5 FT	29.0 FT

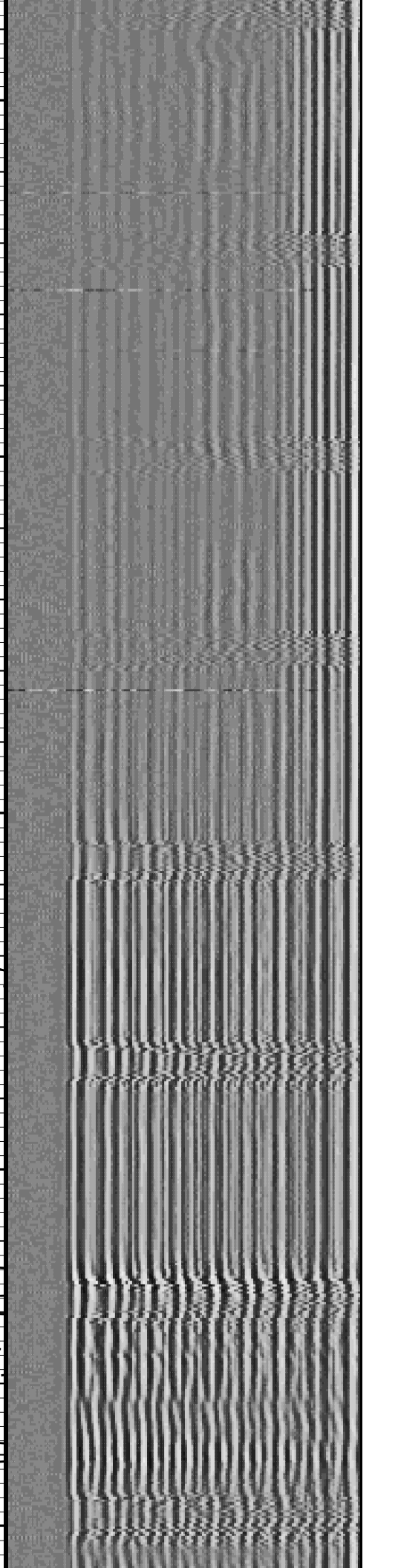
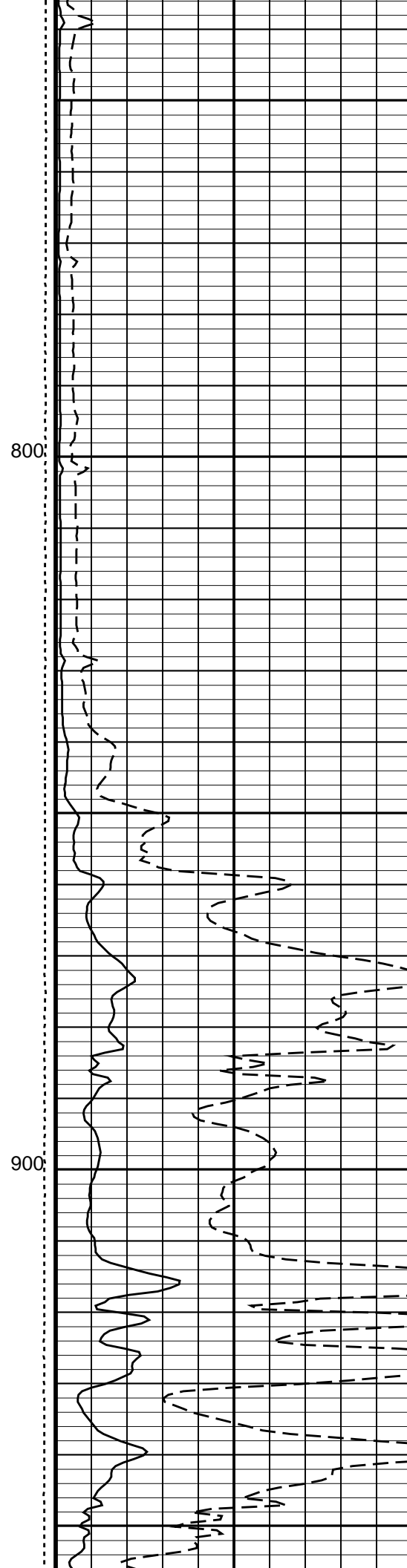
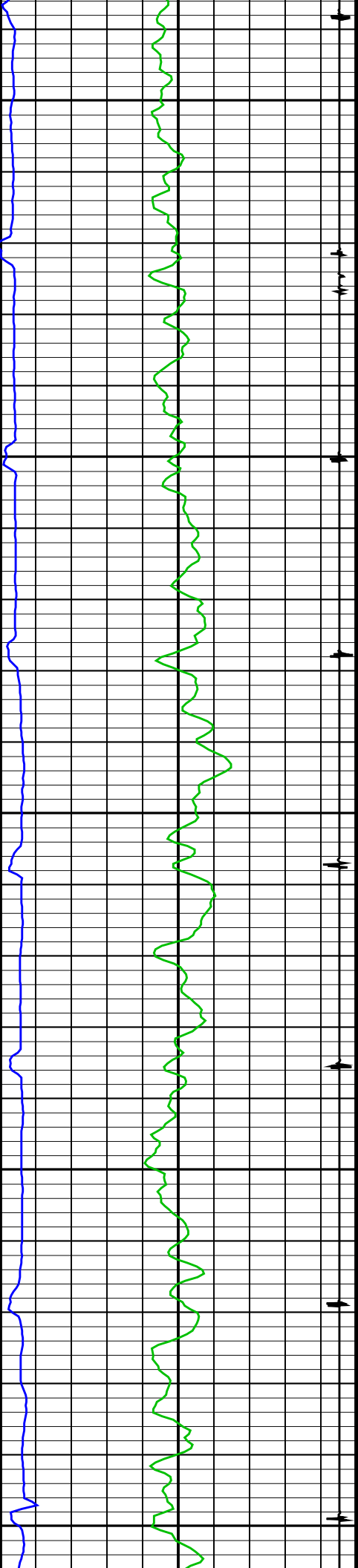
OP System Version: 15C0-309			
MCM			
SCMT-CB	SRPC-3320-FEB_2007_b	PSPT-A/B	SRPC-3292-Q1_2007_b

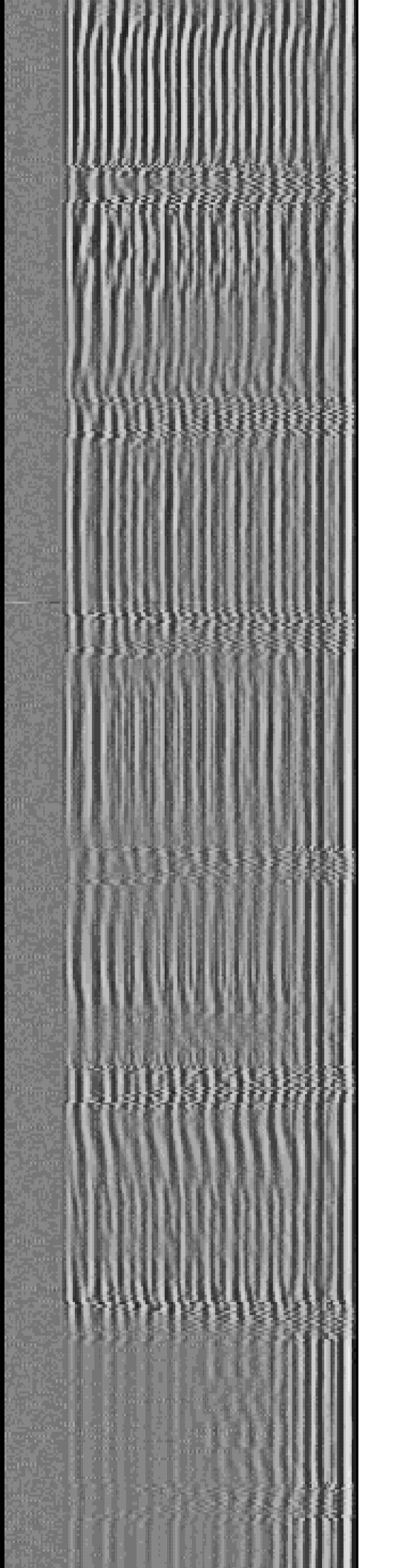
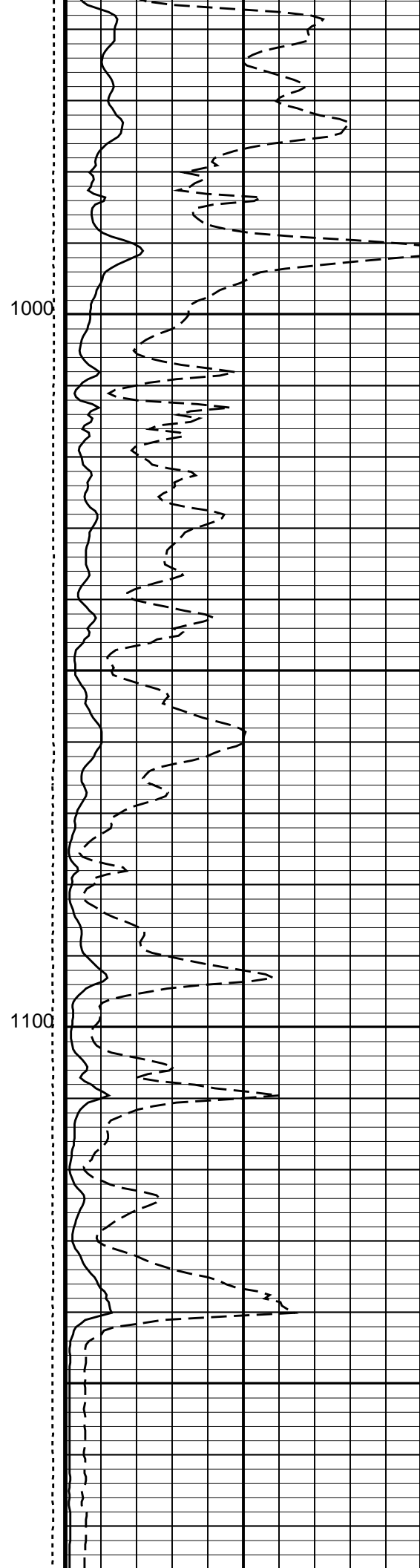
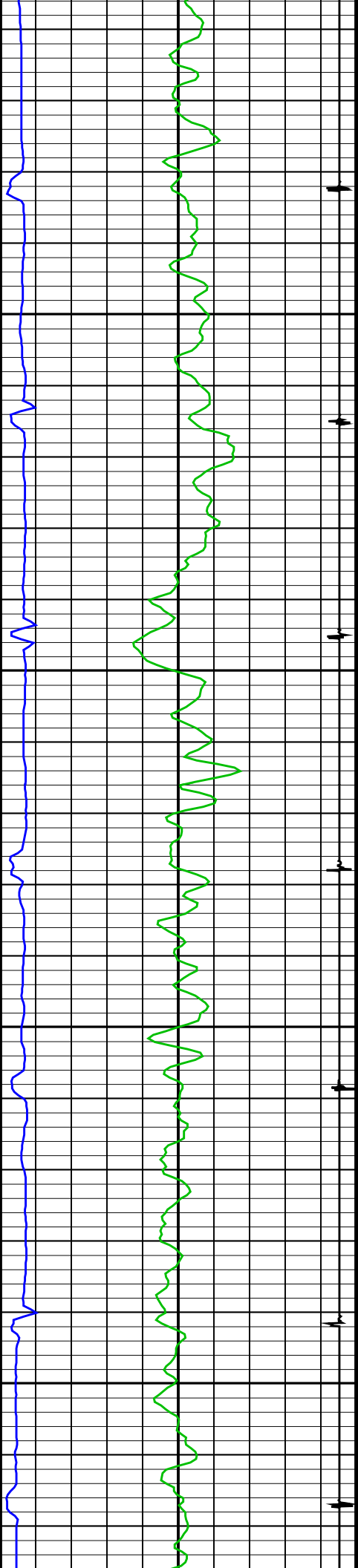


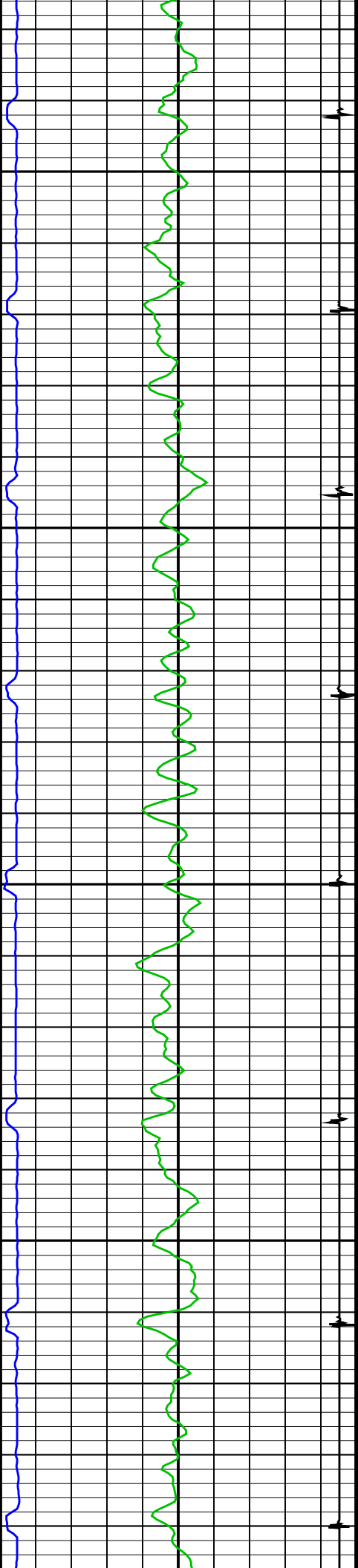






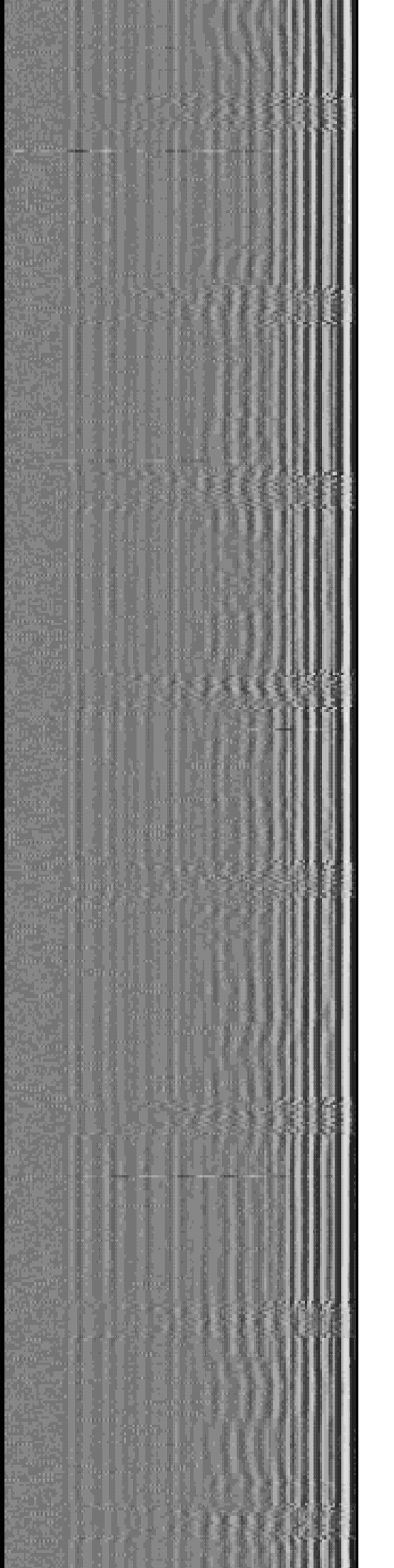
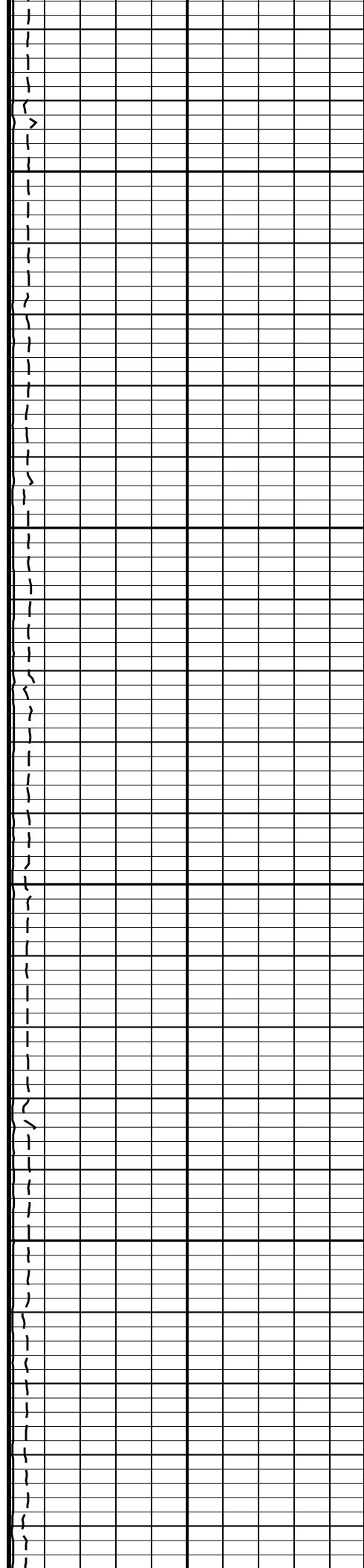


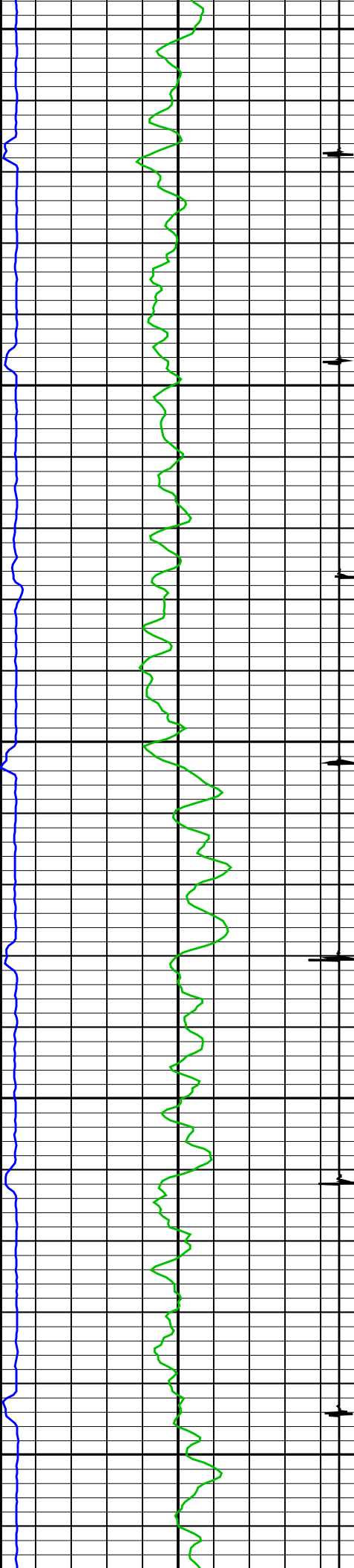




1200

1300

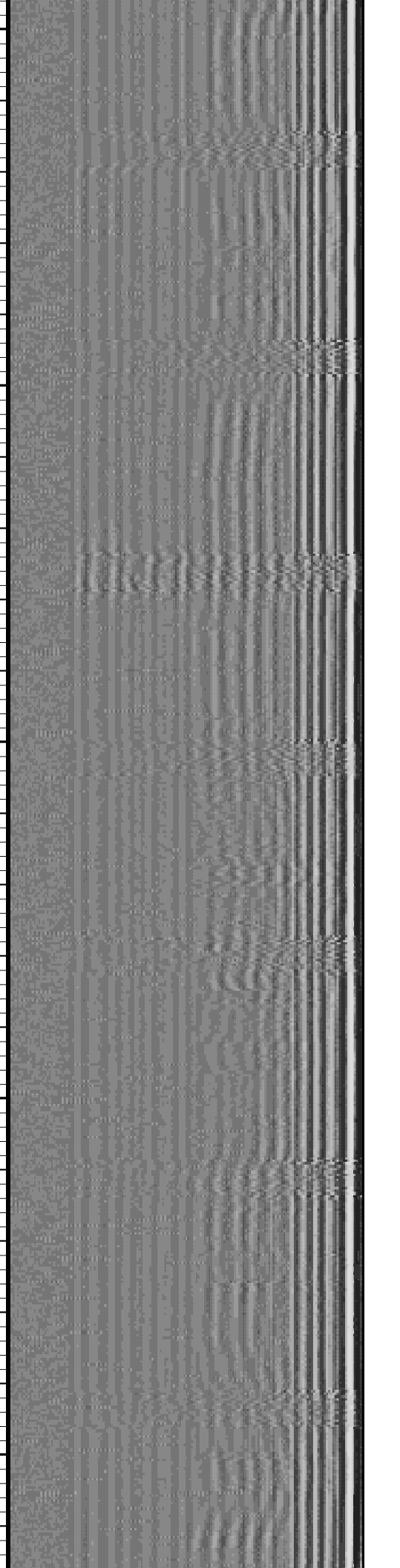
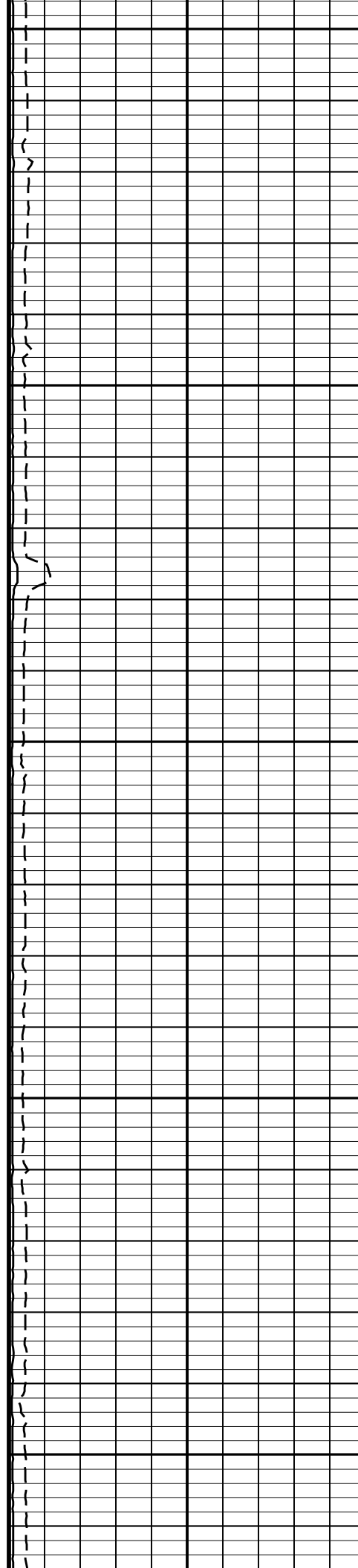


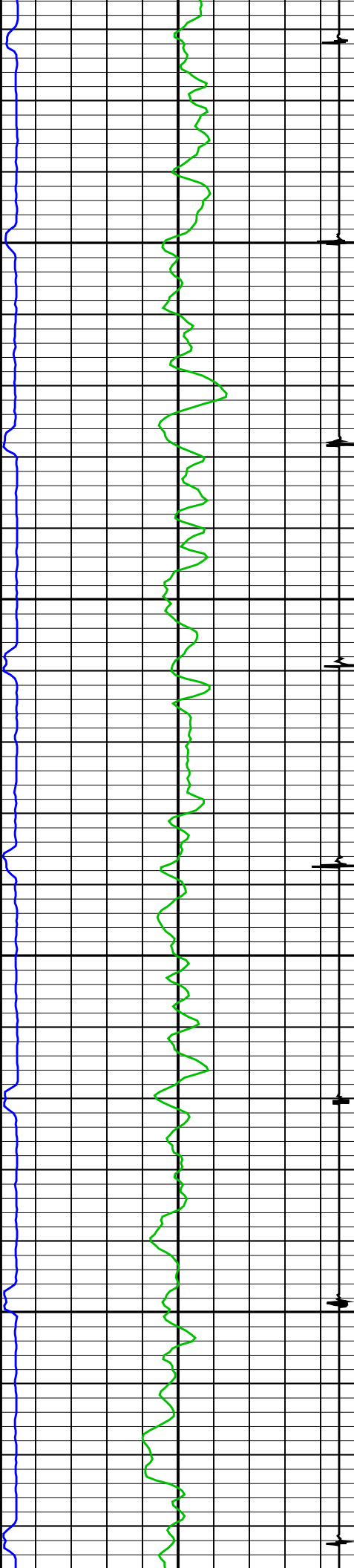


1400

1500

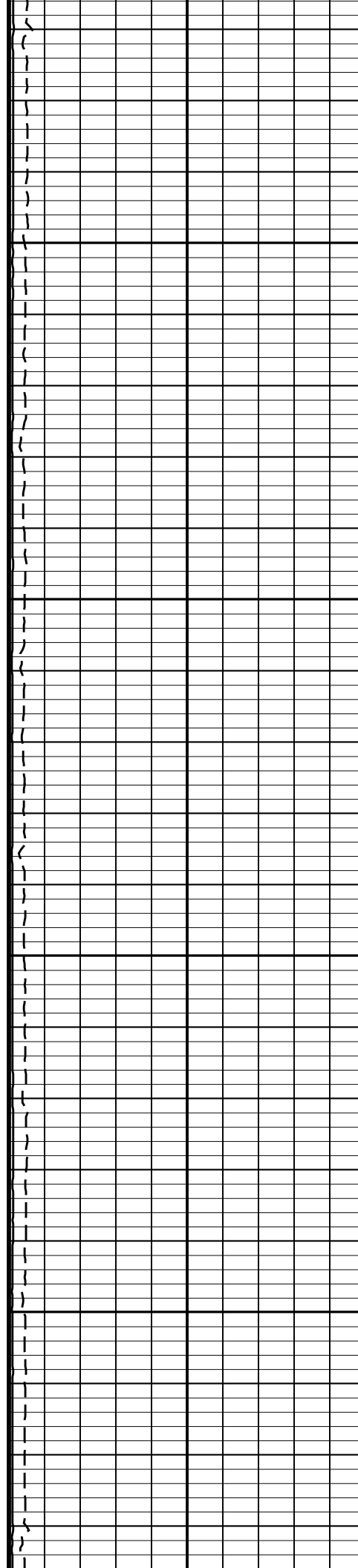
1600

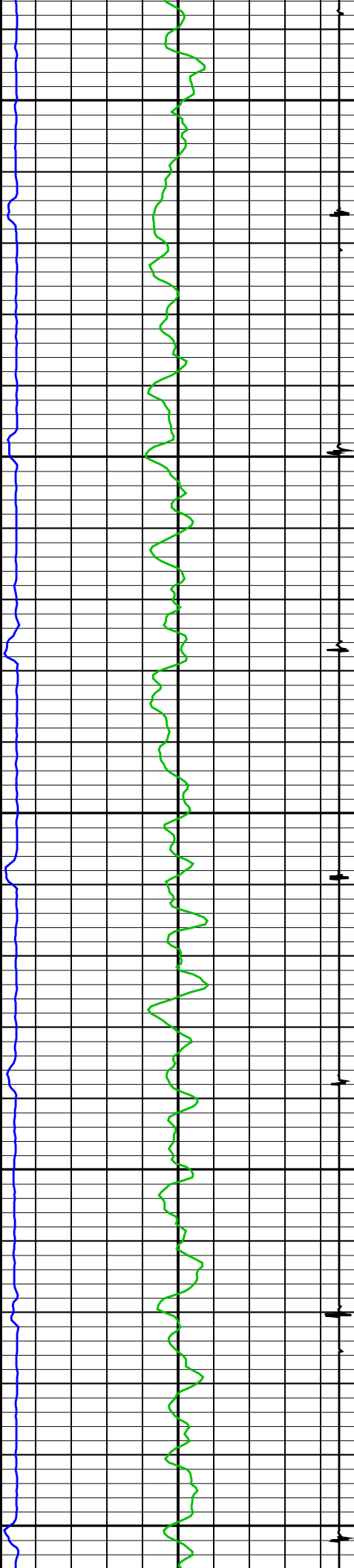




1700

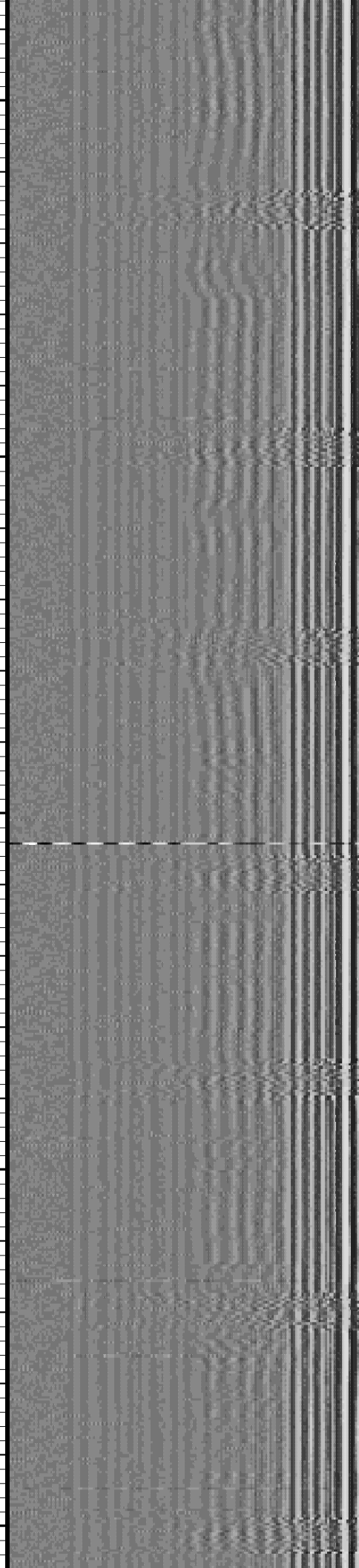
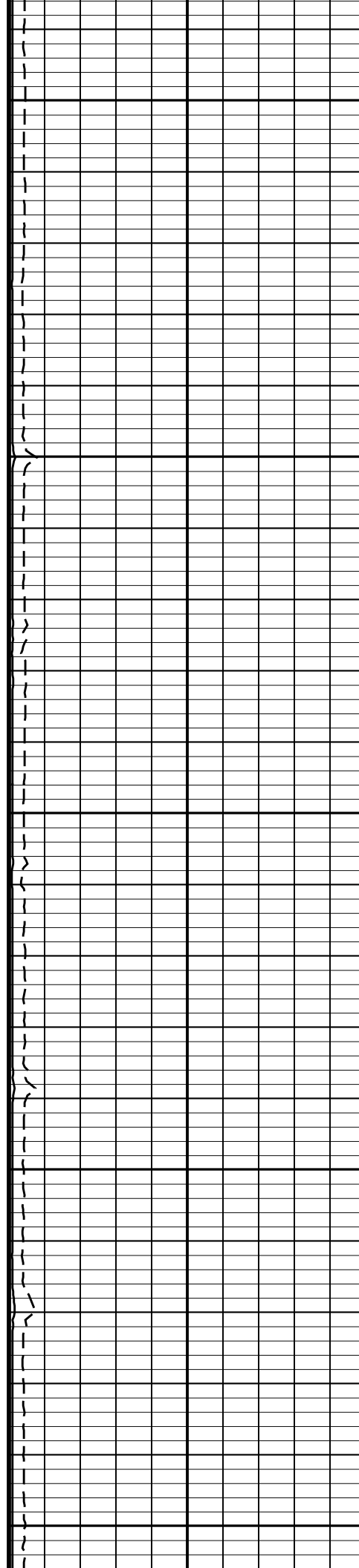
1800

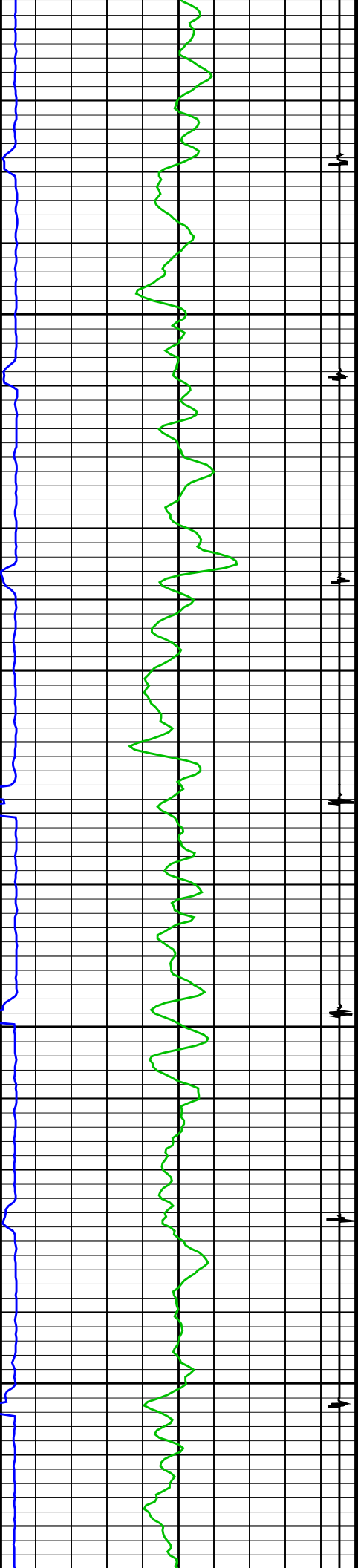




1900

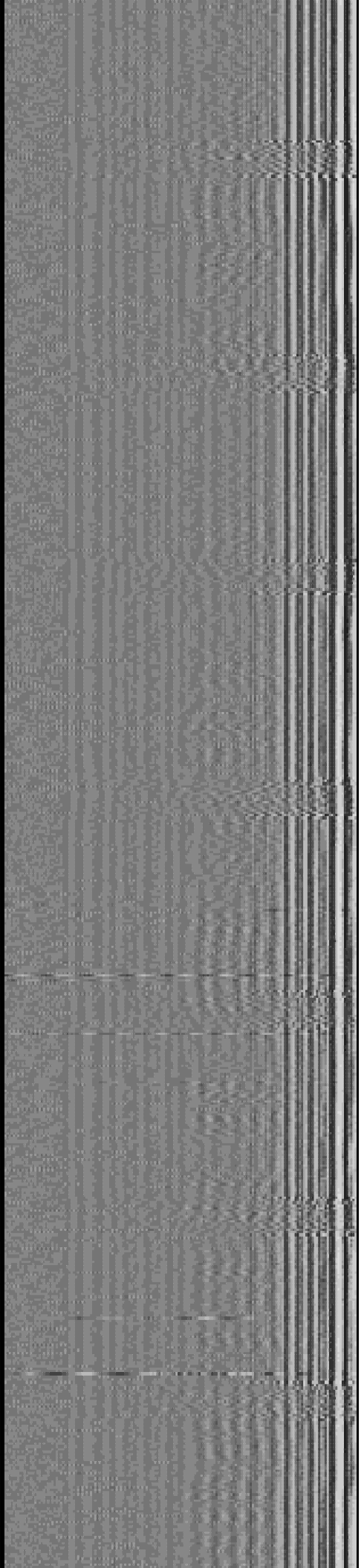
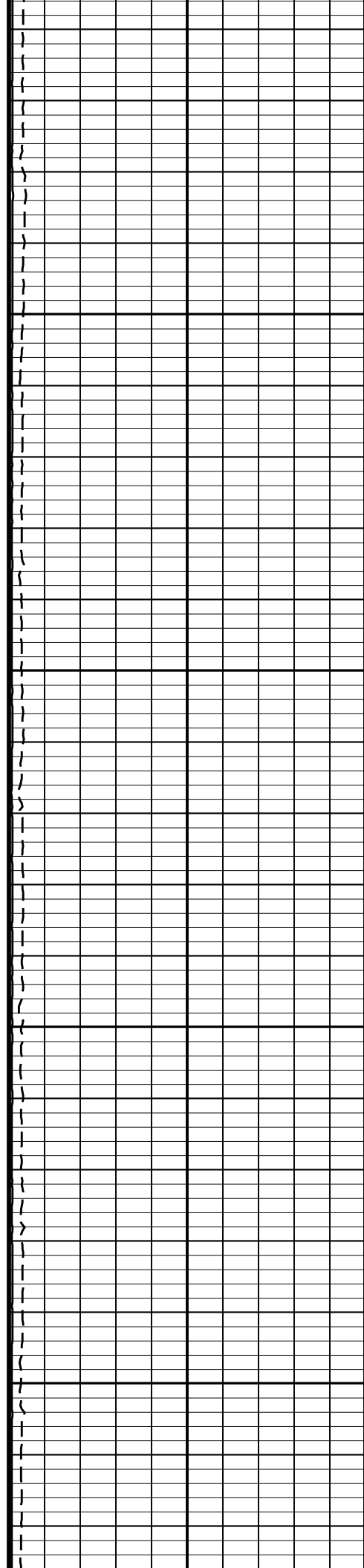
2000

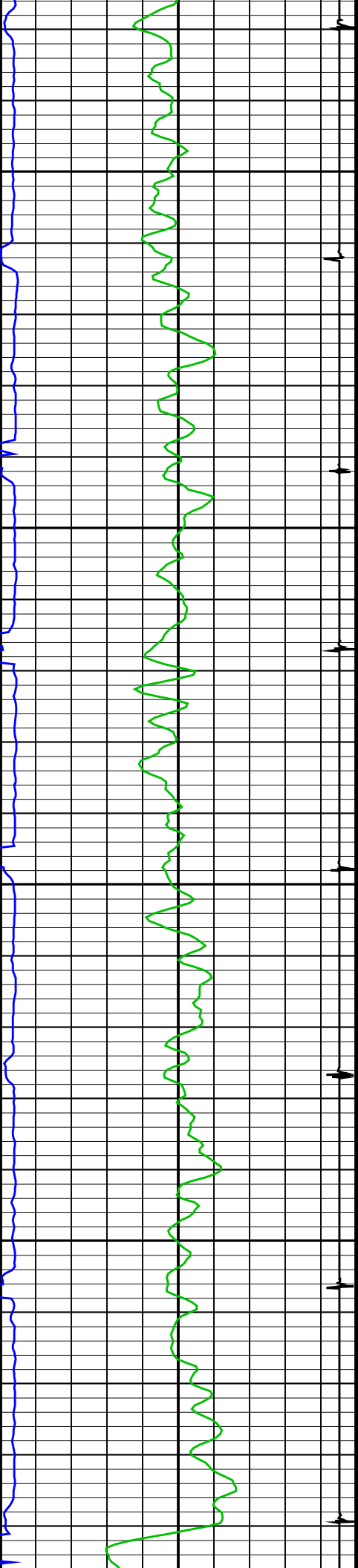




2100

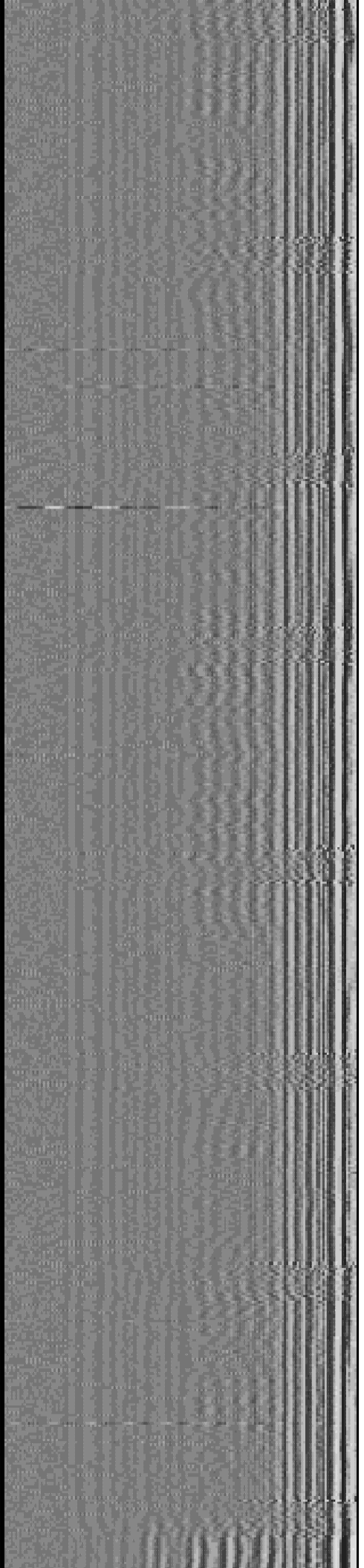
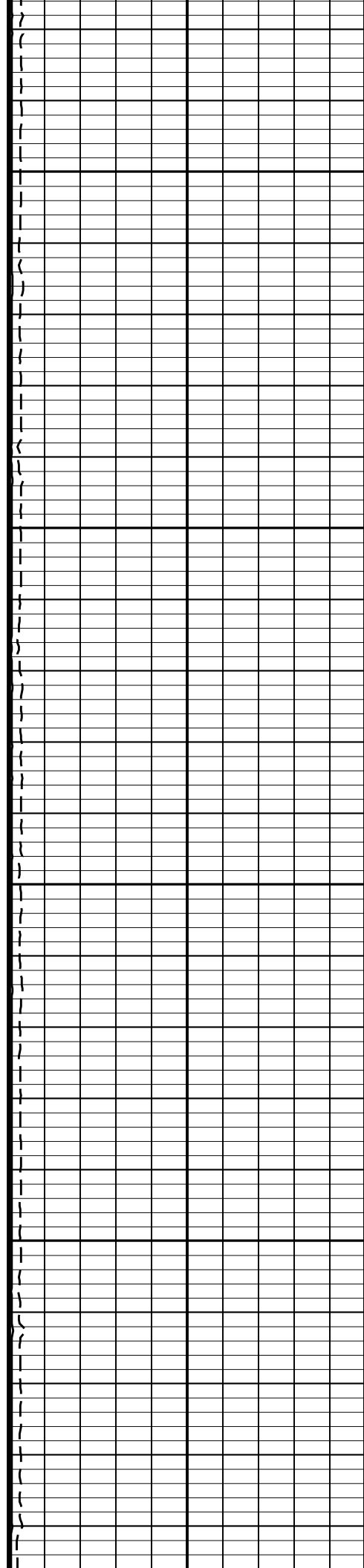
2200

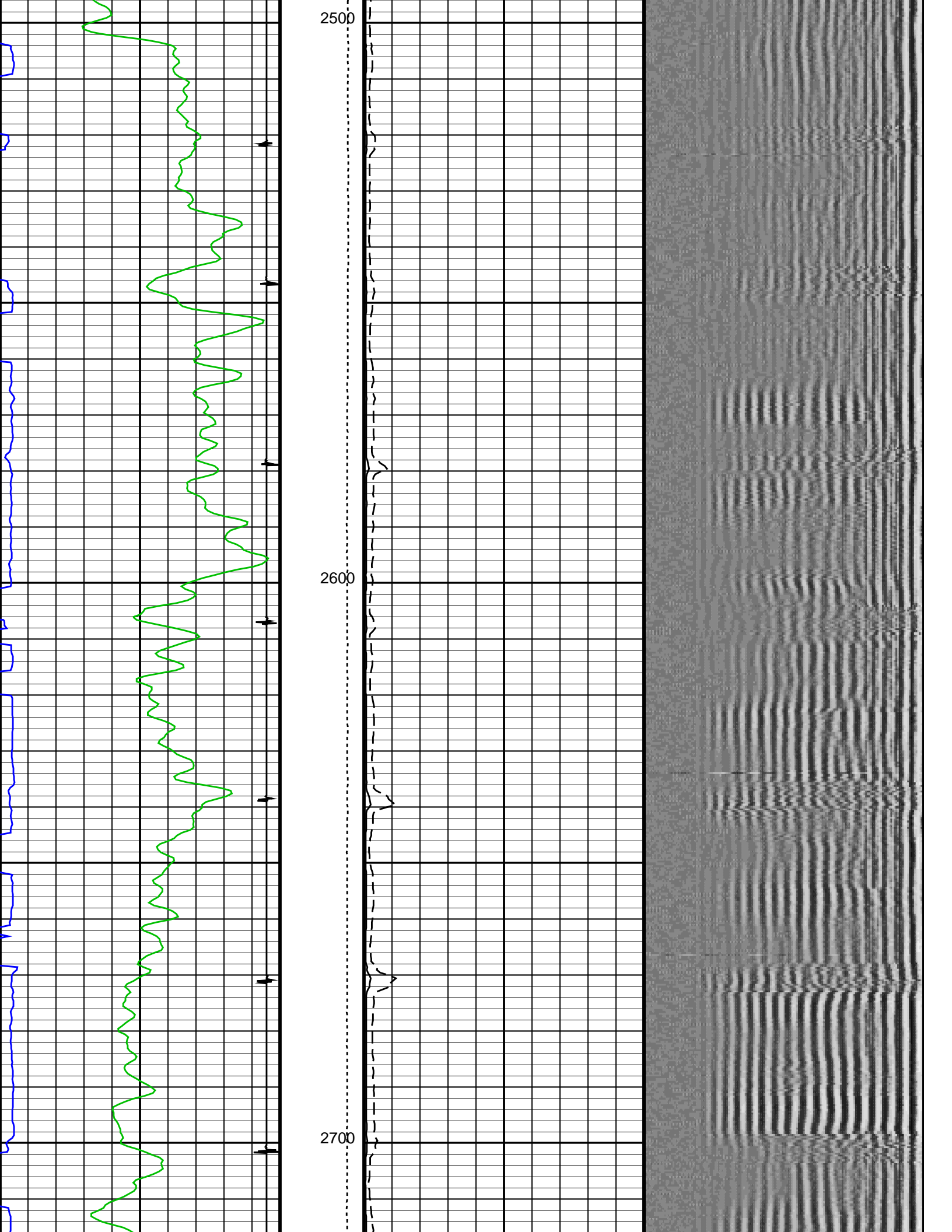


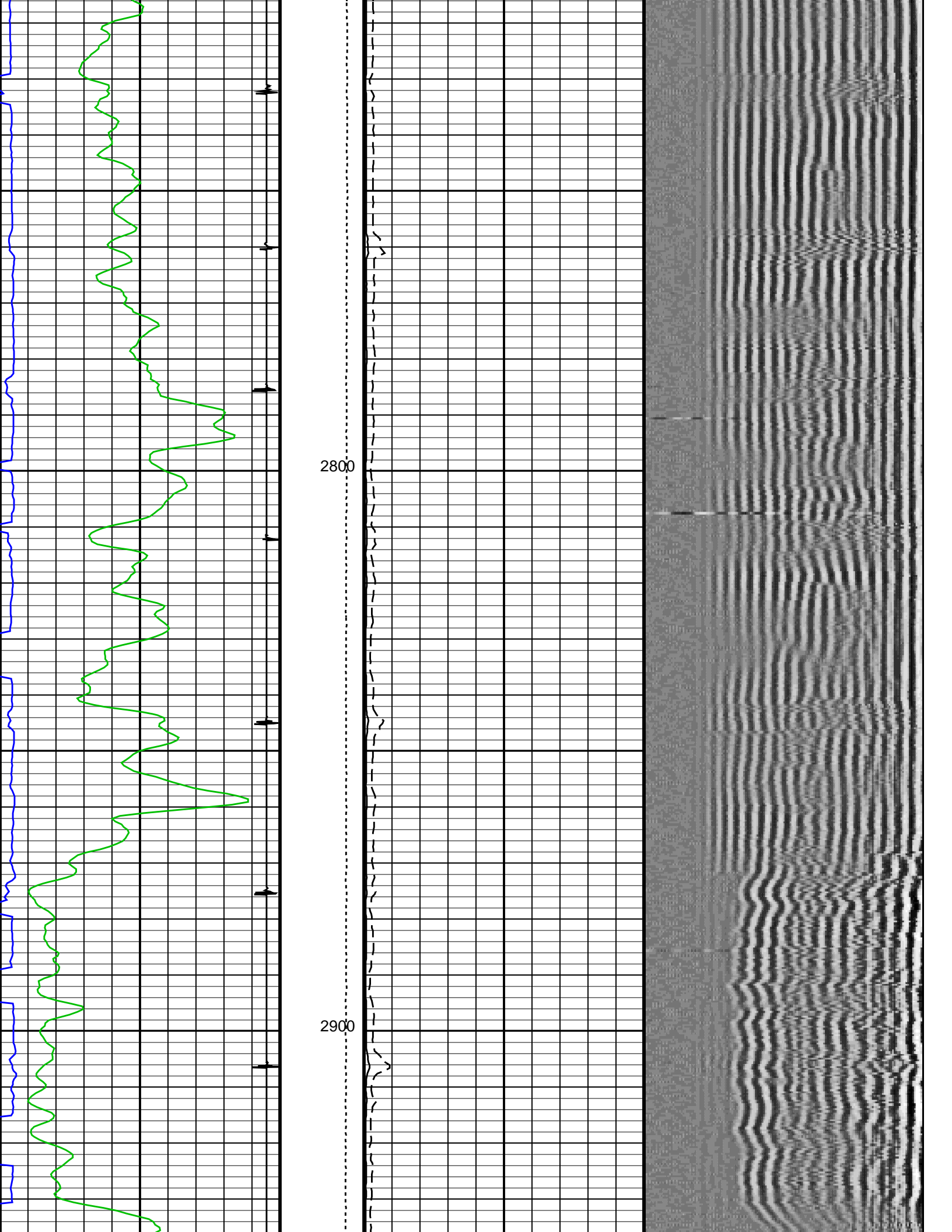


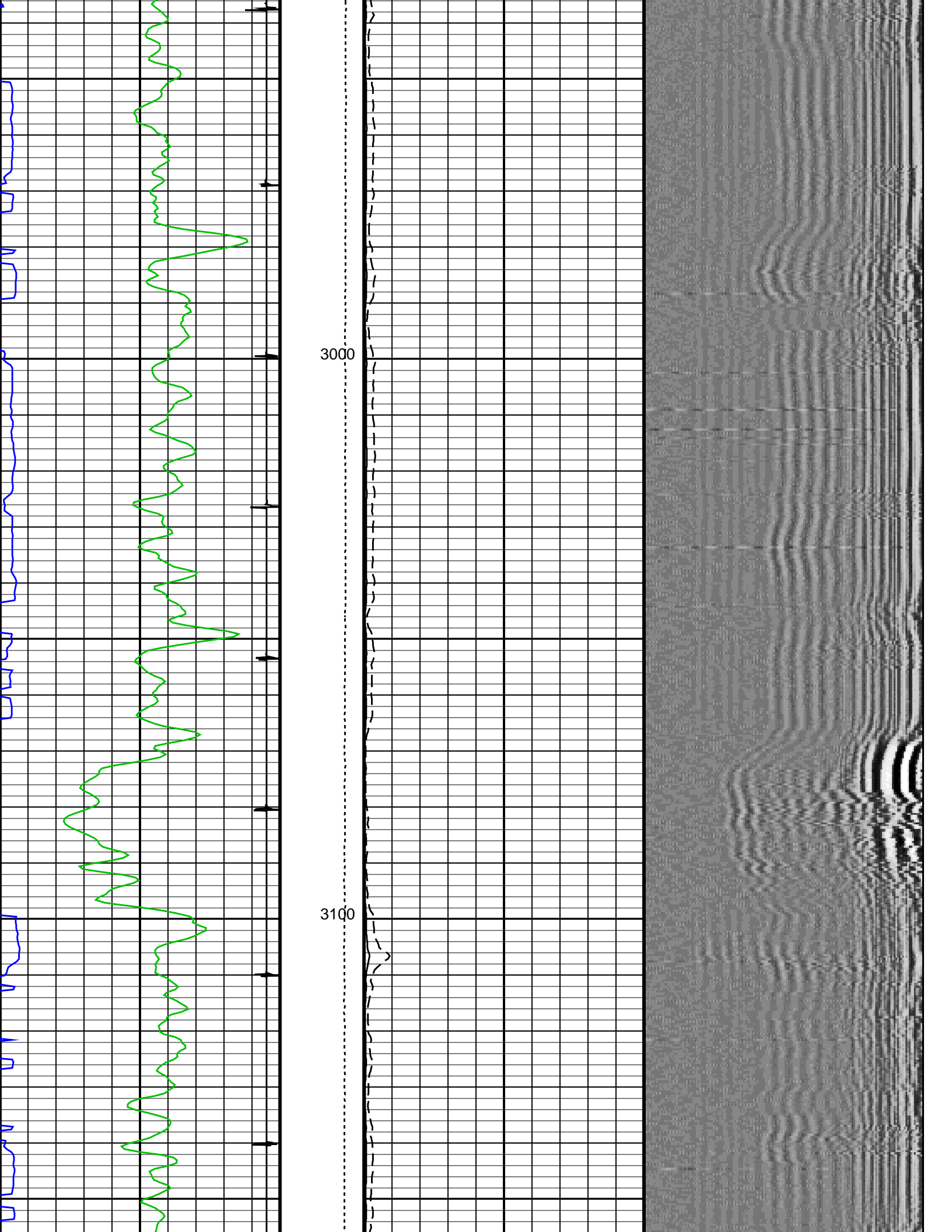
2300

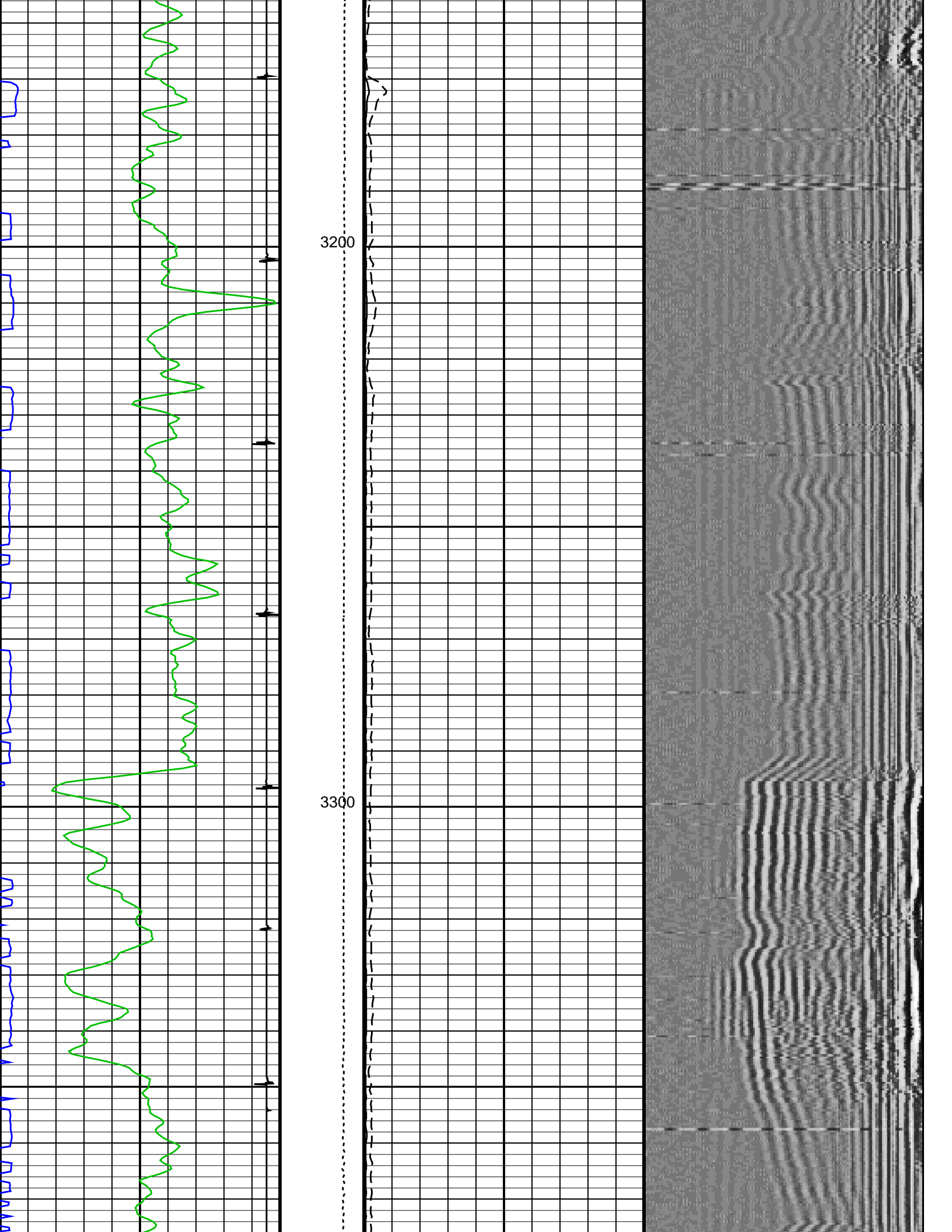
2400

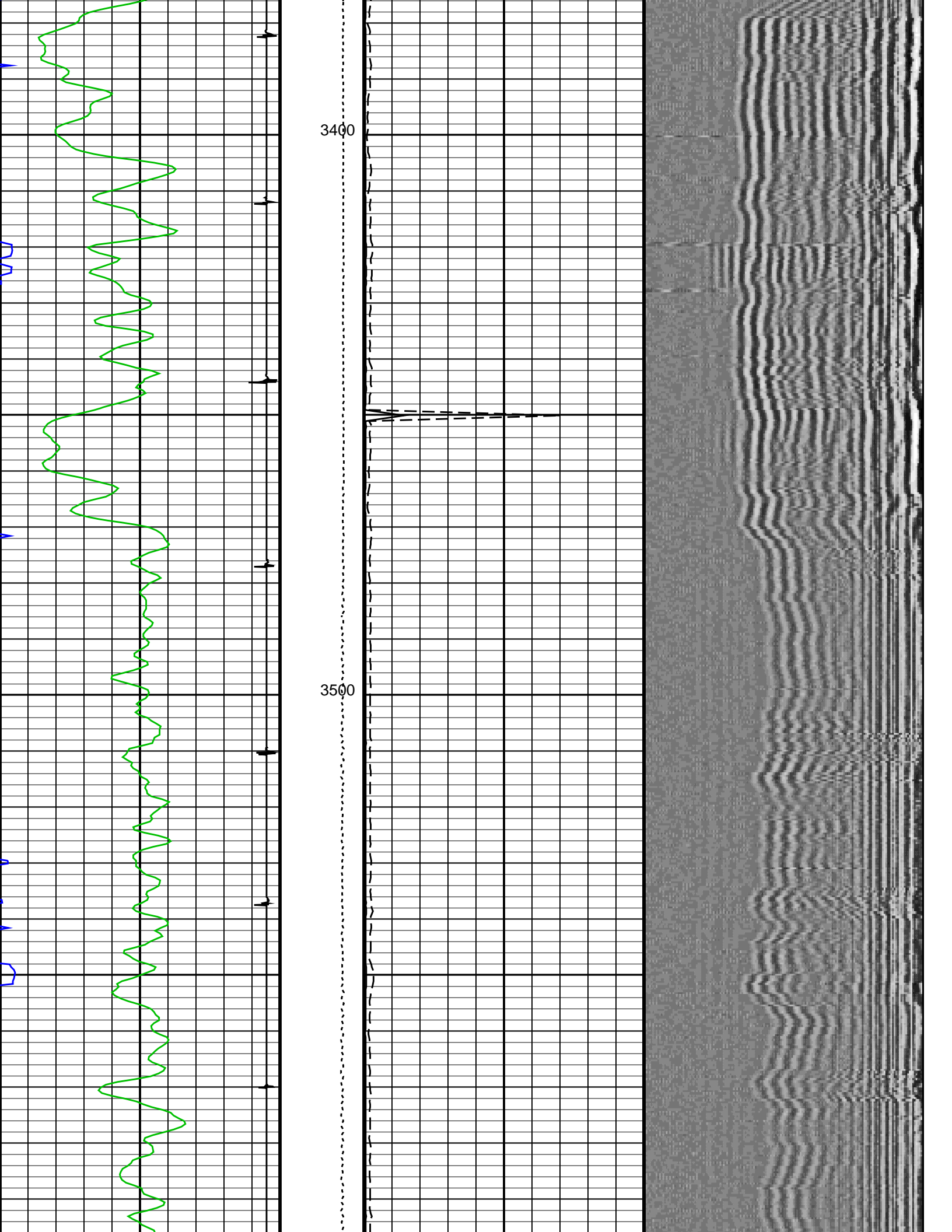


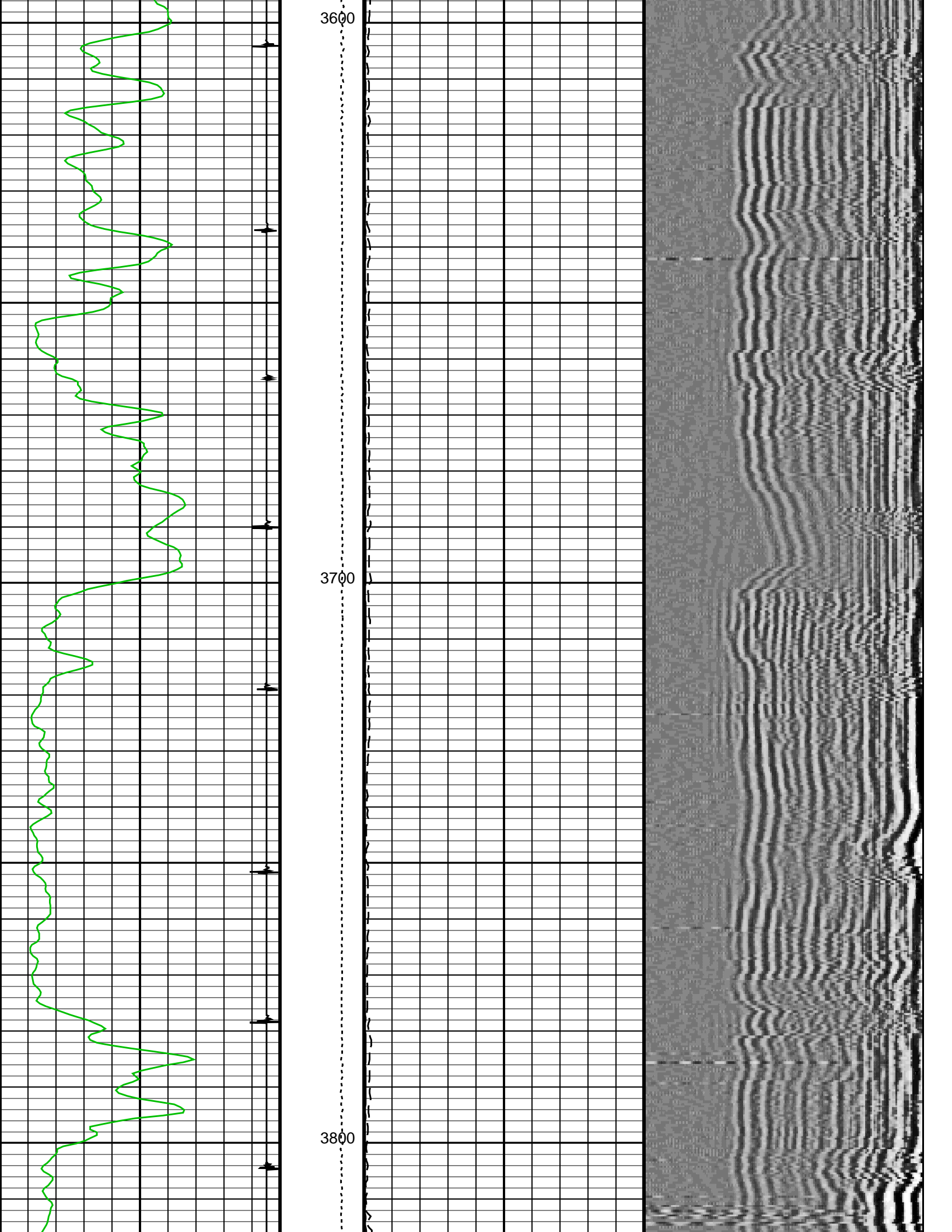


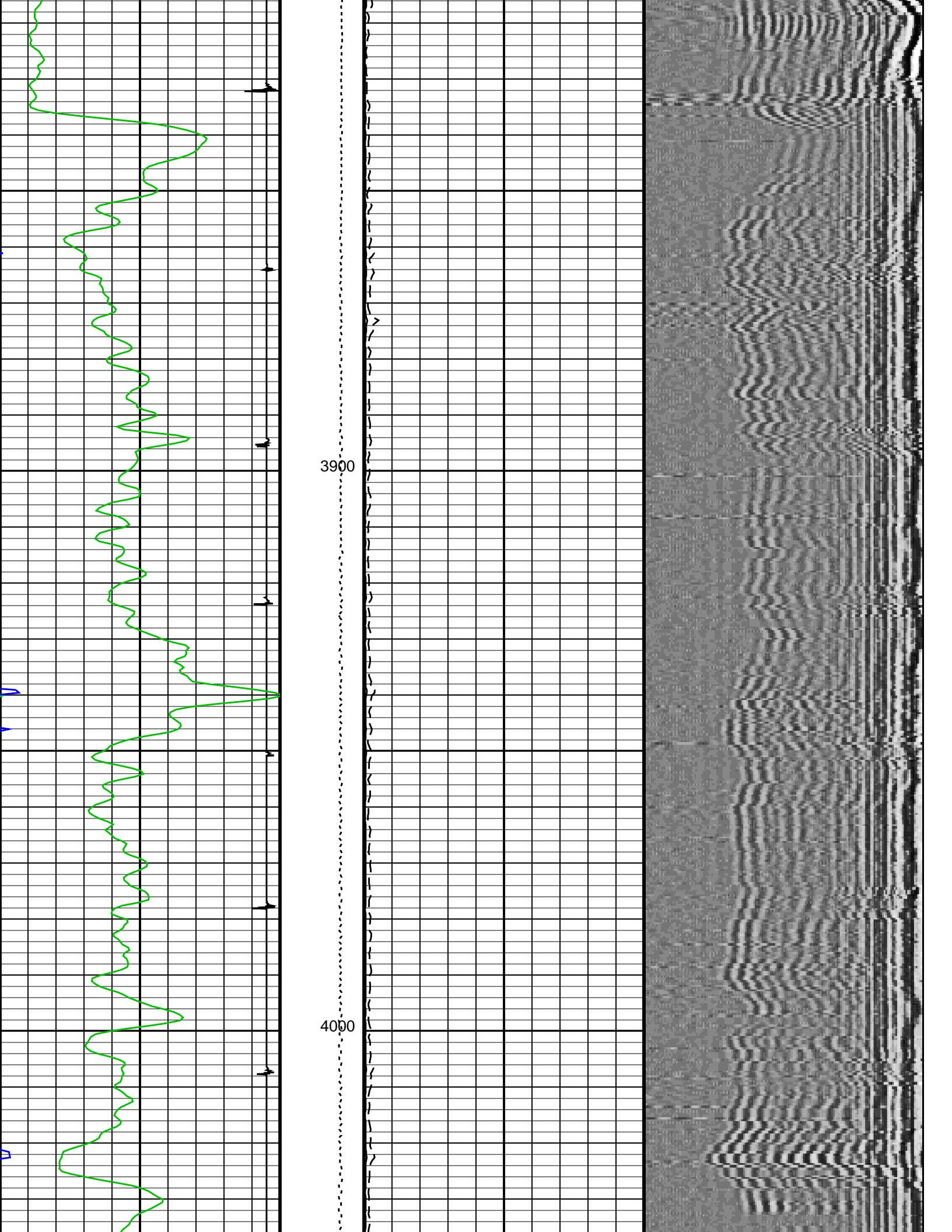


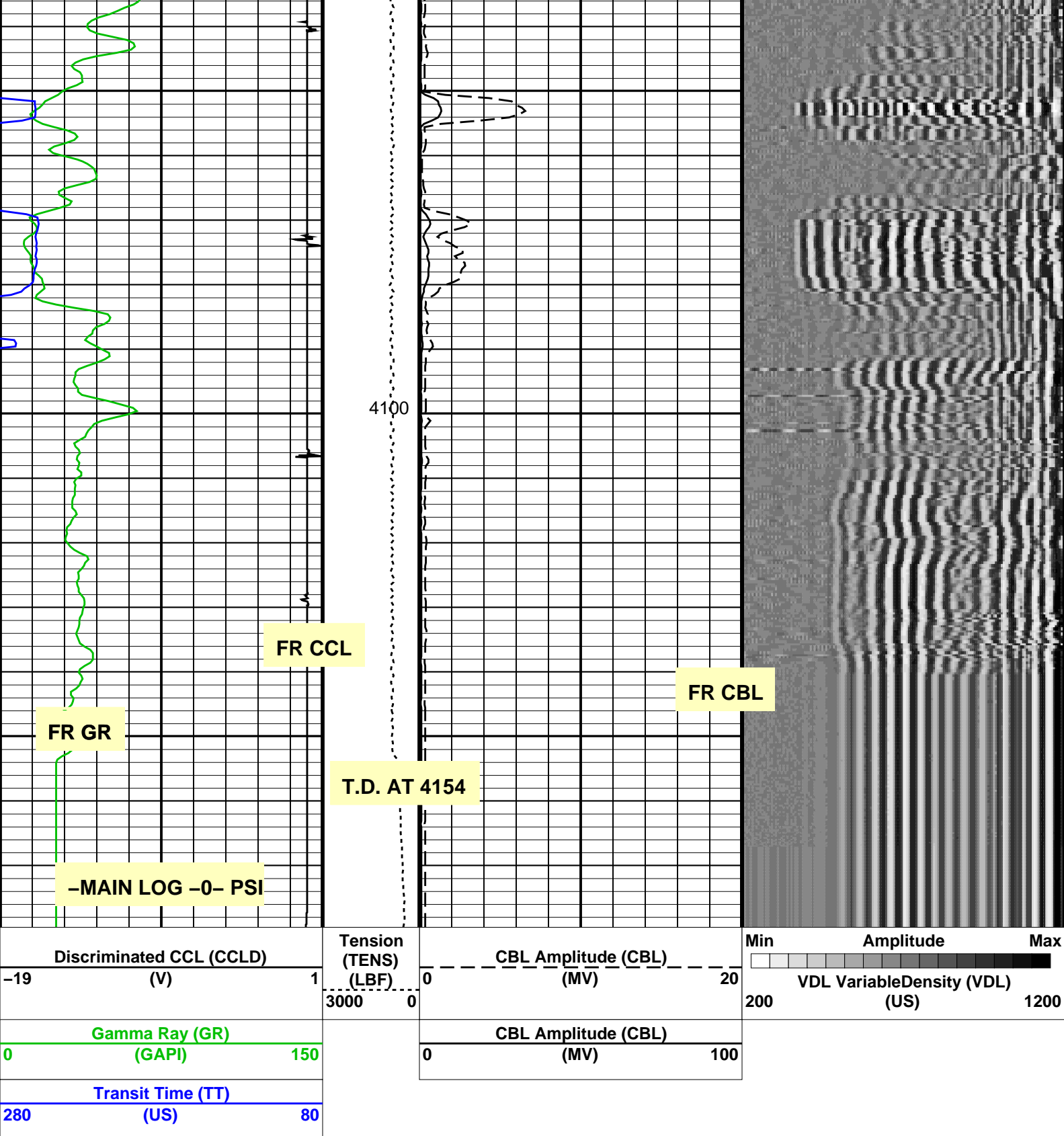












Parameters

DLIS Name	Description	Value	
SCMT-CB: Slim Cement Mapping Tool, 1-11/16 OD			
BILI	Bond Index Level for Zone Isolation	0.8	
BISS	Bond Index Source Selection for BIQL	BI	
CB3D	SCMT CBL 3 ft Peak Detection Mode	PEAK	
CB3G	SCMT CBL 3 ft Peak Detection T0_Delay and Noise Gate	243.301	US
CB3T	SCMT CBL 3 ft Fixed Threshold Level	20	MV
CB5D	SCMT CBL 5 ft Peak Detection Mode	PEAK	
CB5G	SCMT CBL 5 ft Peak Detection T0_Delay and Noise Gate	357.301	US
CB5T	SCMT CBL 5 ft Fixed Threshold Level	20	MV
CBLG	CBL Gate Width	40	US
CBRA	CBL LQC Reference Amplitude in Free Pipe	71	MV

CMCF	CBL Cement Type Compensation Factor	0.232233	
CMTC	SCMT Slow Channel Multiplexer Mode	SCAN	
CMTM	SCMT Operating Mode	LOG	
CMTF	SCMT Tool position on CAN	3	
CSCS	SCMT Slow Channel Index	VCC	
CTHI	Casing Thickness	0.306128	IN
DTF	Delta-T Fluid	205	US/F
FATT	Acoustic Attenuation due to Fluid	0	DB/F
FCF	CBL Fluid Compensation Factor	1	
GOBO	Good Bond	2.61181	MV
MAPD	SCMT MAP Peak Detection Mode	PEAK	
MAPG	SCMT MAP Peak Detection T0_Delay and Noise Gate	186.301	US
MAPT	SCMT MAP Fixed Threshold Level	30	MV
MATT	Maximum Attenuation	9.2241	DB/F
MCCF	MAP Cement Type Compensation Factor	0.395476	
MCI	Minimum Cemented Interval for Isolation	4.75	FT
MMSA	MAP Minimum Sonic Amplitude	7.25817	MV
MSA	Minimum Sonic Amplitude	1.14383	MV
PEDE	Peak Detection On/Off Switch in Playback	OFF	
RBC	Relative Bearing Correction Allow/Disallow	ALLOW	
VDLG	VDL Manual Gain	5	
ZCMT	Acoustic Impedance of Cement	4	MRAY
PSPT-A/B: Production Services Logging Platform			
BHS	Borehole Status	OPEN	
BHT	Bottom Hole Temperature (used in calculations)	147	DEGF
CSID	Casing Size I.D.	4.892	IN
GCSE	Generalized Caliper Selection	BS	
GDEV	Average Angular Deviation of Borehole from Normal	0	DEG
GGRD	Geothermal Gradient	0.01	DF/F
GRSE	Generalized Mud Resistivity Selection	CHART_GEN_9	
GTSE	Generalized Temperature Selection	LINEAR_ESTIMATE	
ISSBAR	Barite Mud Switch	NOBARITE	
MATR	Rock Matrix for Neutron Porosity Corrections	LIMESTONE	
PBPO	PBMS Tool position on CAN	2	
PCCG	PBMS CCL Gain	DB36	
PSTP	PSTC Tool Position on CAN Bus	1	
SHT	Surface Hole Temperature	68	DEGF
System and Miscellaneous			
ALTDPC	Name of alternate depth channel	SpeedCorrectedDepth	
BS	Bit Size	7.875	IN
BSAL	Borehole Salinity	-50000.00	PPM
CSIZ	Current Casing Size	5.500	IN
CWEI	Casing Weight	17.00	LB/F
DFD	Drilling Fluid Density	-50000.00	LB/G
DO	Depth Offset for Playback	3.5	FT
FLEV	Fluid Level	10.00	FT
MST	Mud Sample Temperature	-50000.00	DEGF
PBVSADP	Use alternate depth channel for playback	NO	
PP	Playback Processing	RECOMPUTE	
RMFS	Resistivity of Mud Filtrate Sample	-50000.0000	OHMM
RW	Resistivity of Connate Water	1.0000	OHMM
TD	Total Depth	-50000	FT
TDD	Total Depth - Driller	4207.00	FT
TDL	Total Depth - Logger	4154.00	FT
TWS	Temperature of Connate Water Sample	100.00	DEGF

Format: CBL_VDL Vertical Scale: 5" per 100' Graphics File Created: 23-Jan-2008 08:48

OP System Version: 15C0-309

MCM

SCMT-CB SRPC-3320-FEB_2007_b PSPT-A/B SRPC-3292-Q1_2007_b

Input DLIS Files

DEFAULT SCMT_PSP_002LUP FN:1 PRODUCER 23-Jan-2008 07:40 4176.0 FT 45.5 FT

Output DLIS Files

DEFAULT SCMT_PSP_004PUP FN:3 PRODUCER 23-Jan-2008 08:48

Company: **FOREST OIL CORPORATION**

Schlumberger

Well: **SOUTH HOLYOKE SWD 1B-25-7-45**

Field: **SOUTH HOLYOKE**

County: **PHILLIPS**

State: **COLORADO**

State:

COLORADO

CEMENT BOND
GAMMA RAY CCL LOG