

Company XTO Energy Inc.		Company XTO Energy Inc.	
Well Golden Eagle 20-04		Well Golden Eagle 20-04	
Field Purgatoire River		Field Purgatoire River	
County Las Animas		County Las Animas	
State Colorado		State Colorado	
Location:		API # : 05 071 08599 00	
SEC 20 TWP 33S RGE 67W		DIL	
Permanent Datum		Ground Level	Elevation 7697'
Log Measured From		Ground Level	
Drilling Measured From		Ground Level	
Elevation		K.B. --- D.F. --- G.L. 7697'	
Date	12-04-05		
Run Number	Two		
Depth Driller	1205'		
Depth Logger	1056'		
Bottom Logged Interval	1053'		
Top Log Interval	12.75 Conductor		
Casing Driller	12.75 @ 20'		
Casing Logger	18'		
Bit Size	1 1/2"		
Type Fluid in Hole	Water		
Density / Viscosity	///		
pH / Fluid Loss	///		
Source of Sample	///		
Rm @ Meas. Temp	///		
Rmf @ Meas. Temp	///		
Rmc @ Meas. Temp	///		
Source of Rmf / Rmc	///		
Rm @ BHT	///		
Time Circulation Stopped	11:15 A.M.		
Time Logger on Bottom	1:25 P.M.		
Maximum Recorded Temperature	82 DEG F		
Equipment Number	T720		
Location	Trinidad		
Recorded By	R. Taylor		
Witnessed By	Mr. Don Johnson		

<<< Fold Here >>>

All interpretations are opinions based on inferences from electrical or other measurements and we cannot and do not guarantee the accuracy or correctness of any interpretation, and we shall not, except in the case of gross or willful negligence on our part, be liable or responsible for any loss, costs, damages, or expenses incurred or sustained by anyone resulting from any interpretation made by any of our officers, agents or employees. These interpretations are also subject to our general terms and conditions set out in our current Price Schedule.

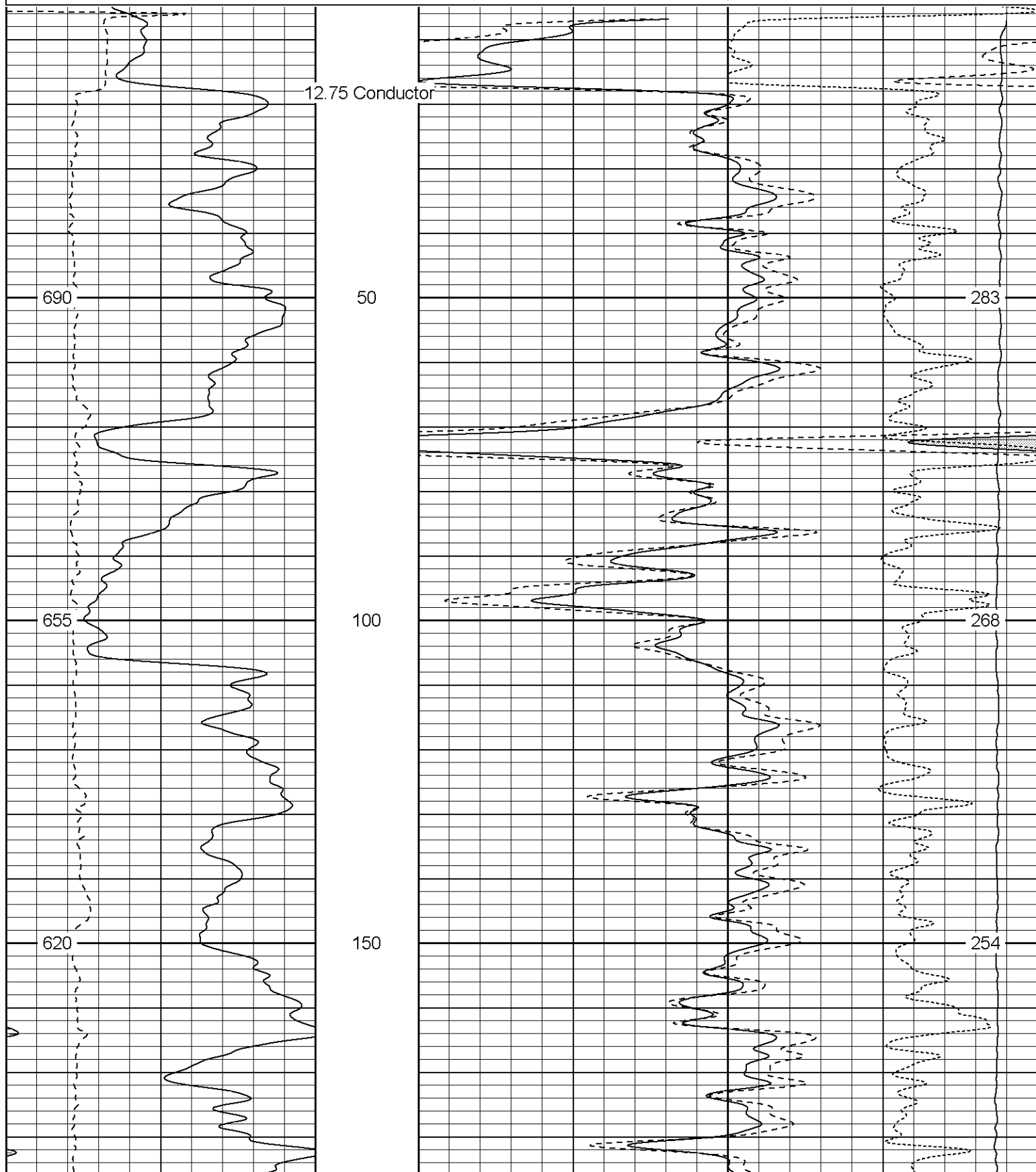
Comments

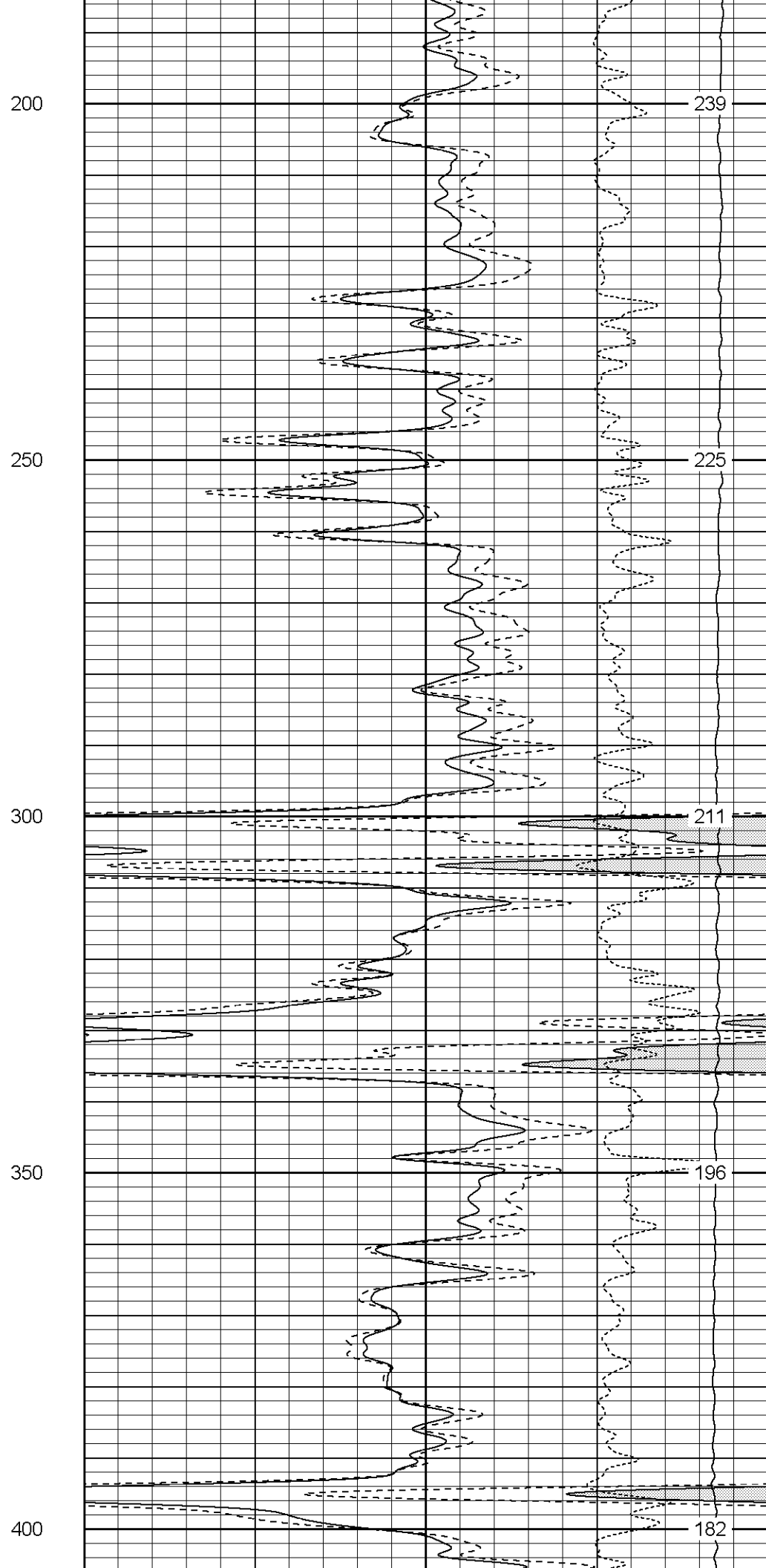
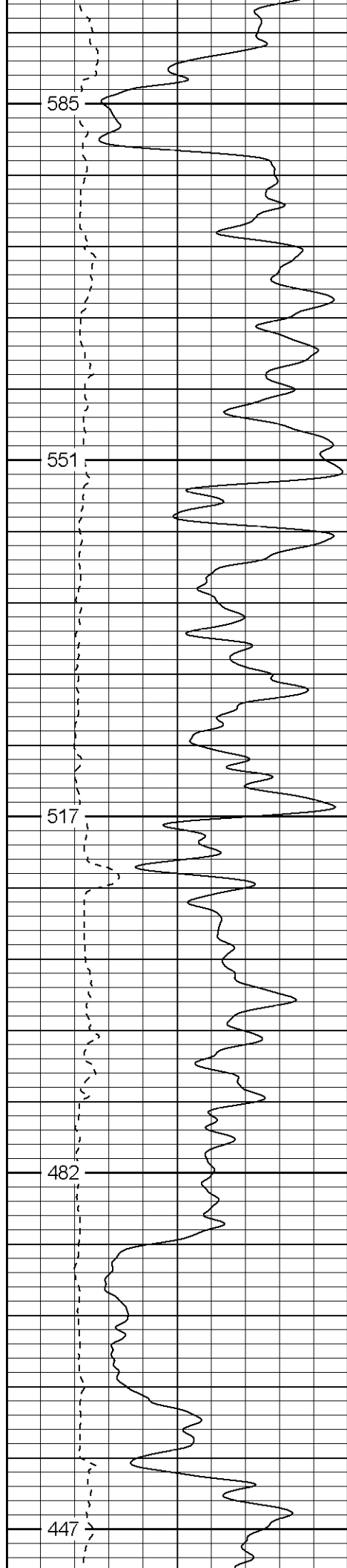
No Repeat Section Ran Due To Hole Conditions.  
ABHV Calculated For 8.625" Casing.  
Well Directions:

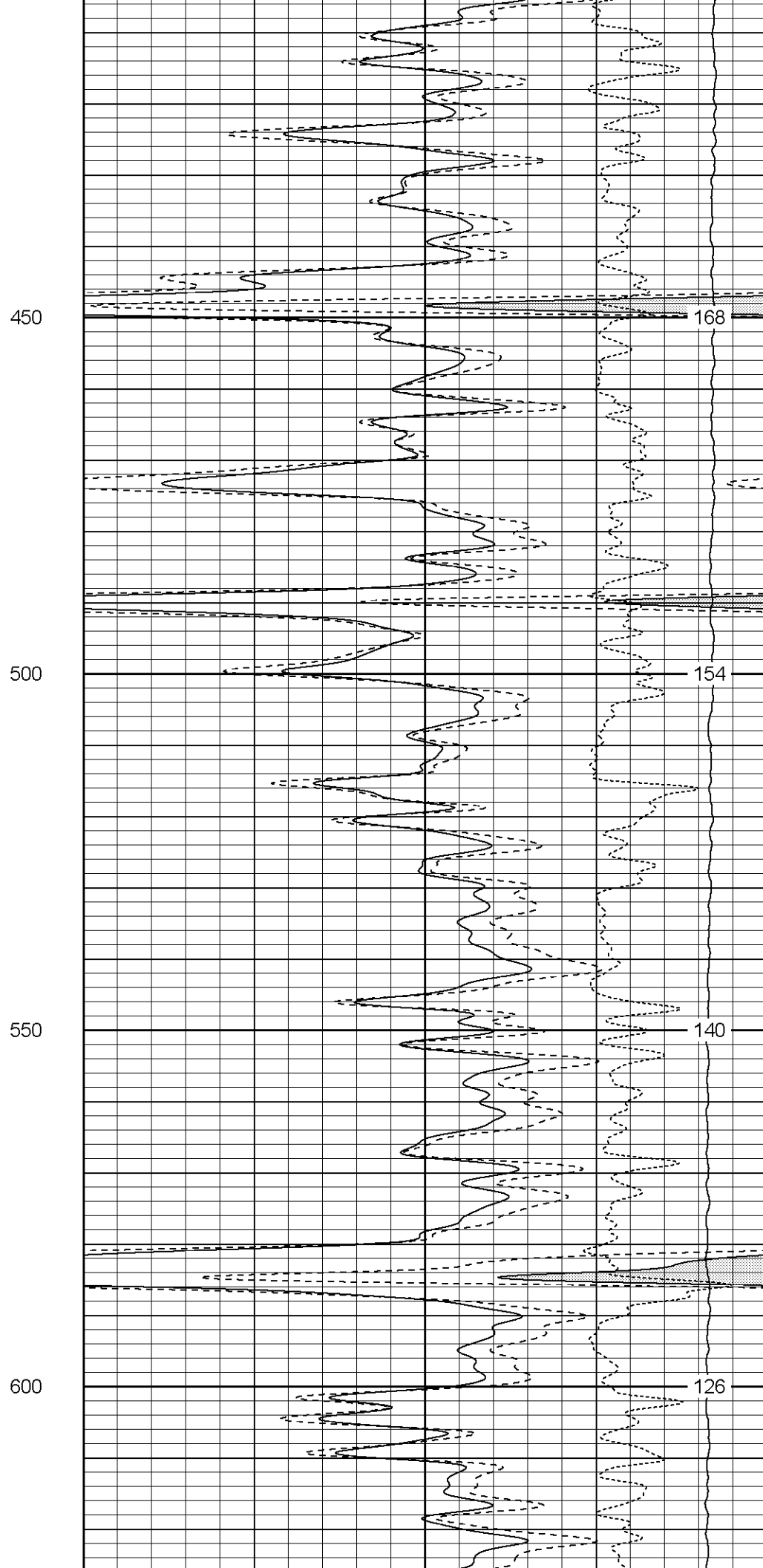
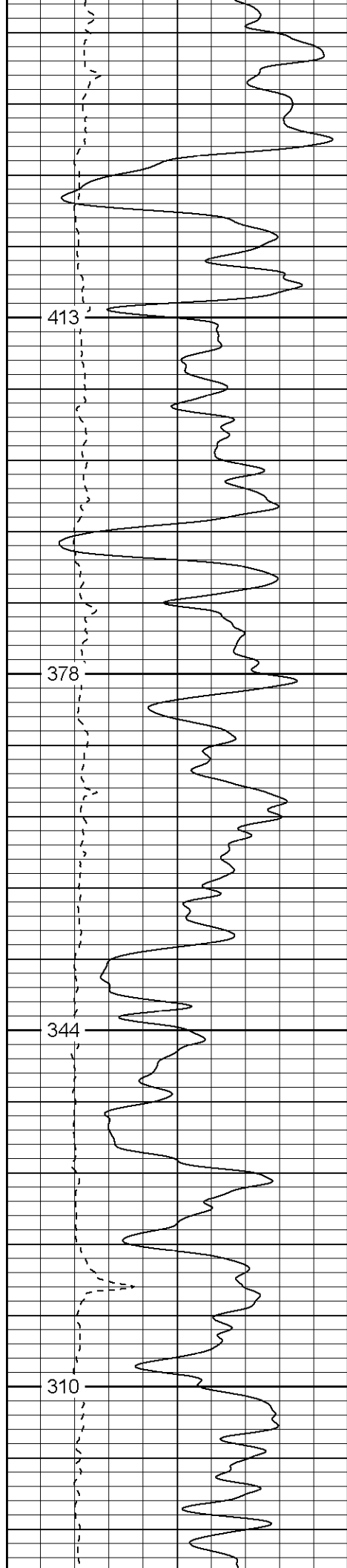
4 Miles Past Weston On Hwy 12. Right thru Gate. Stay On Main Rd To T. Left, Stay Left Up Hill To Location

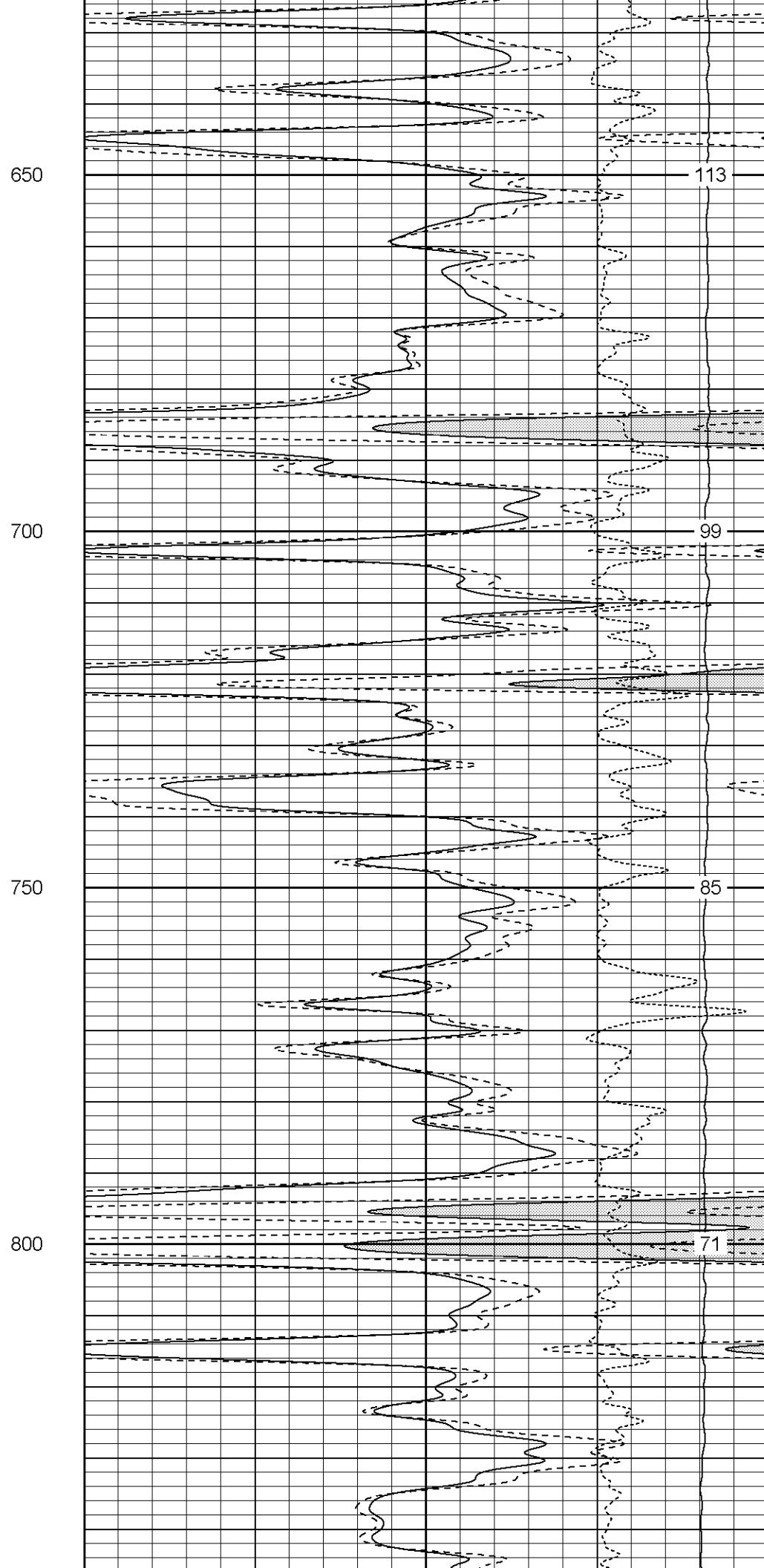
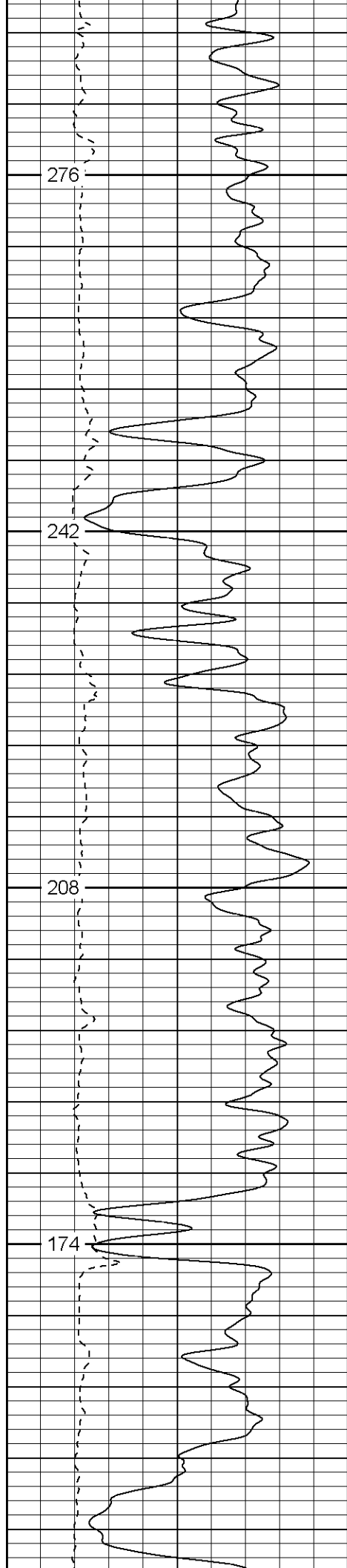
Database File: xtoge2004120405.db  
Dataset Pathname: pass3.4  
Presentation Format: cdl  
Dataset Creation: Mon Dec 05 08:27:20 2005 by Calc Warrior 7.0 STD Ope  
Charted by: Depth in Feet scaled 1:240

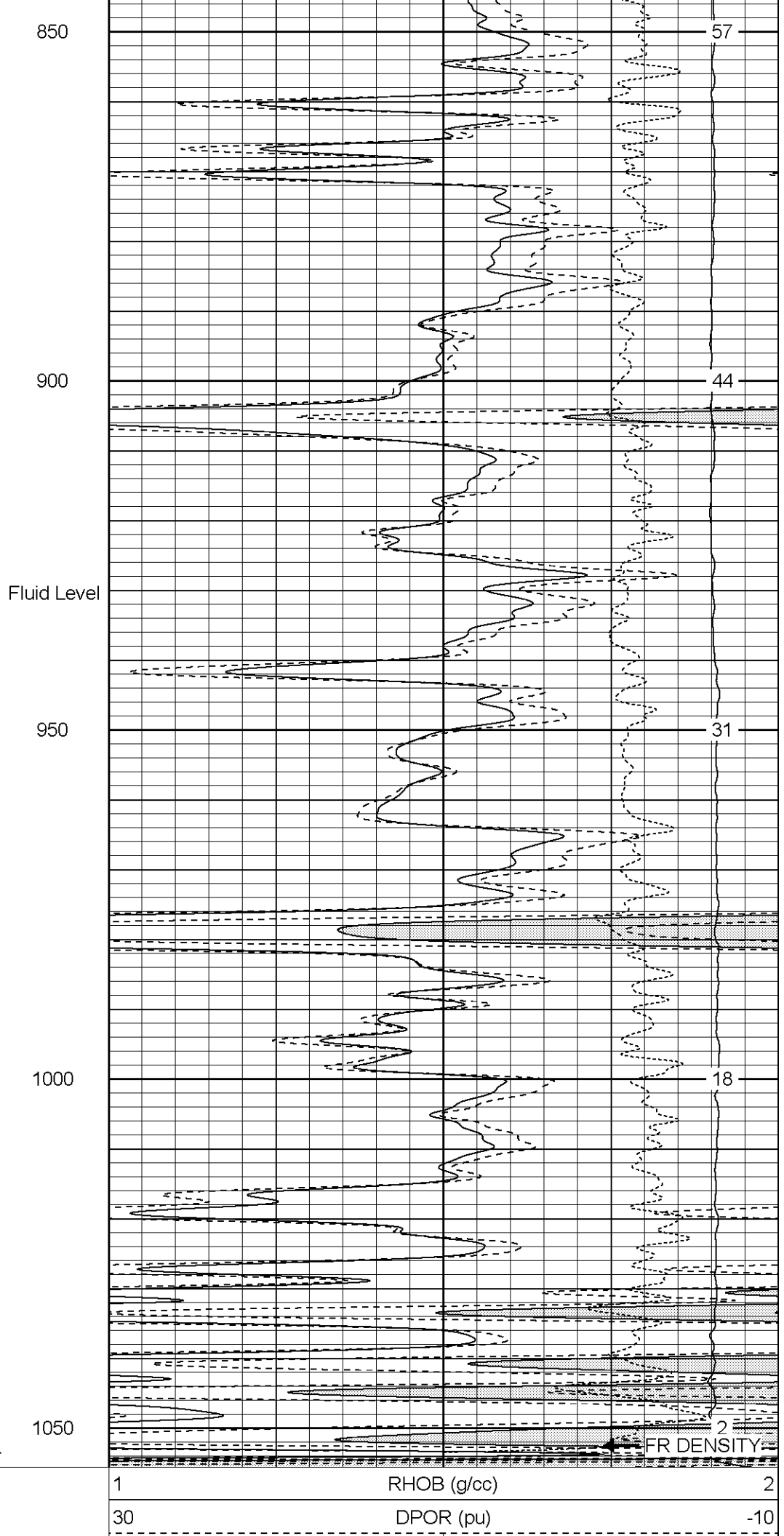
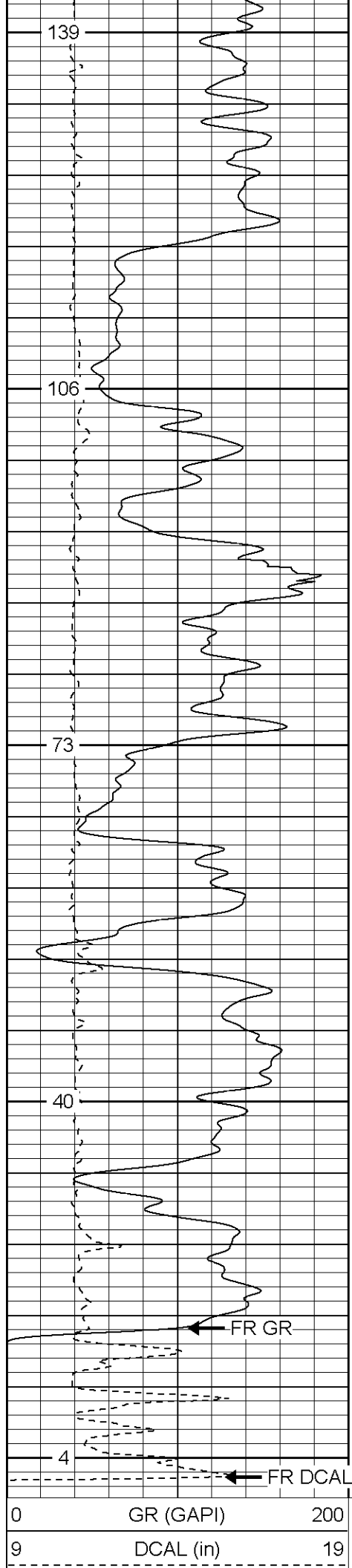
0	GR (GAPI)	200	1	RHOB (g/cc)	2
9	DCAL (in)	19	30	DPOR (pu)	-10
			-0.5	RHOC (g/cc)	0.5
			4000	LTEN (lb)	0











-0.5	RHOC (g/cc)	0.5
4000	LTEN (lb)	0

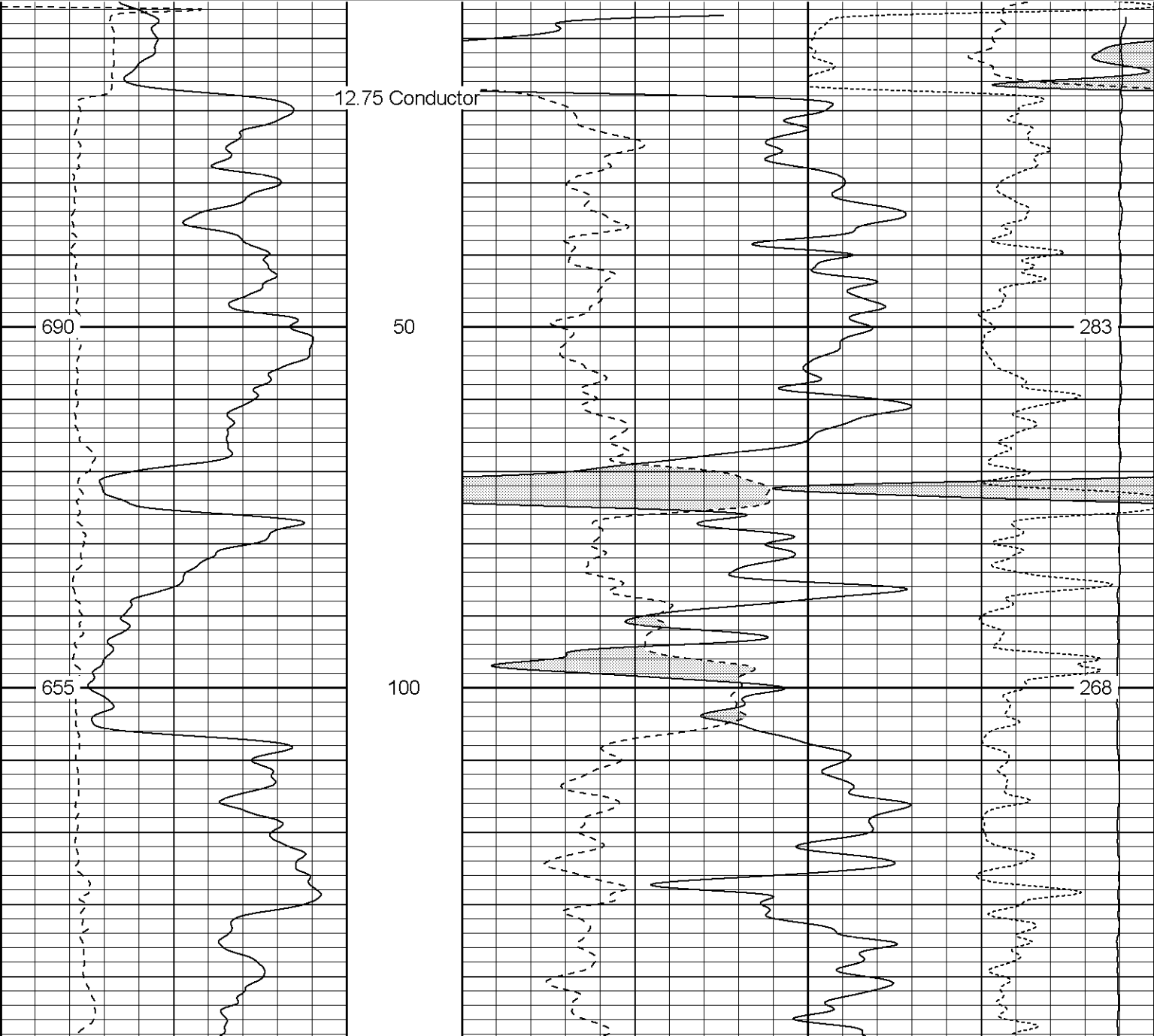
Patterson

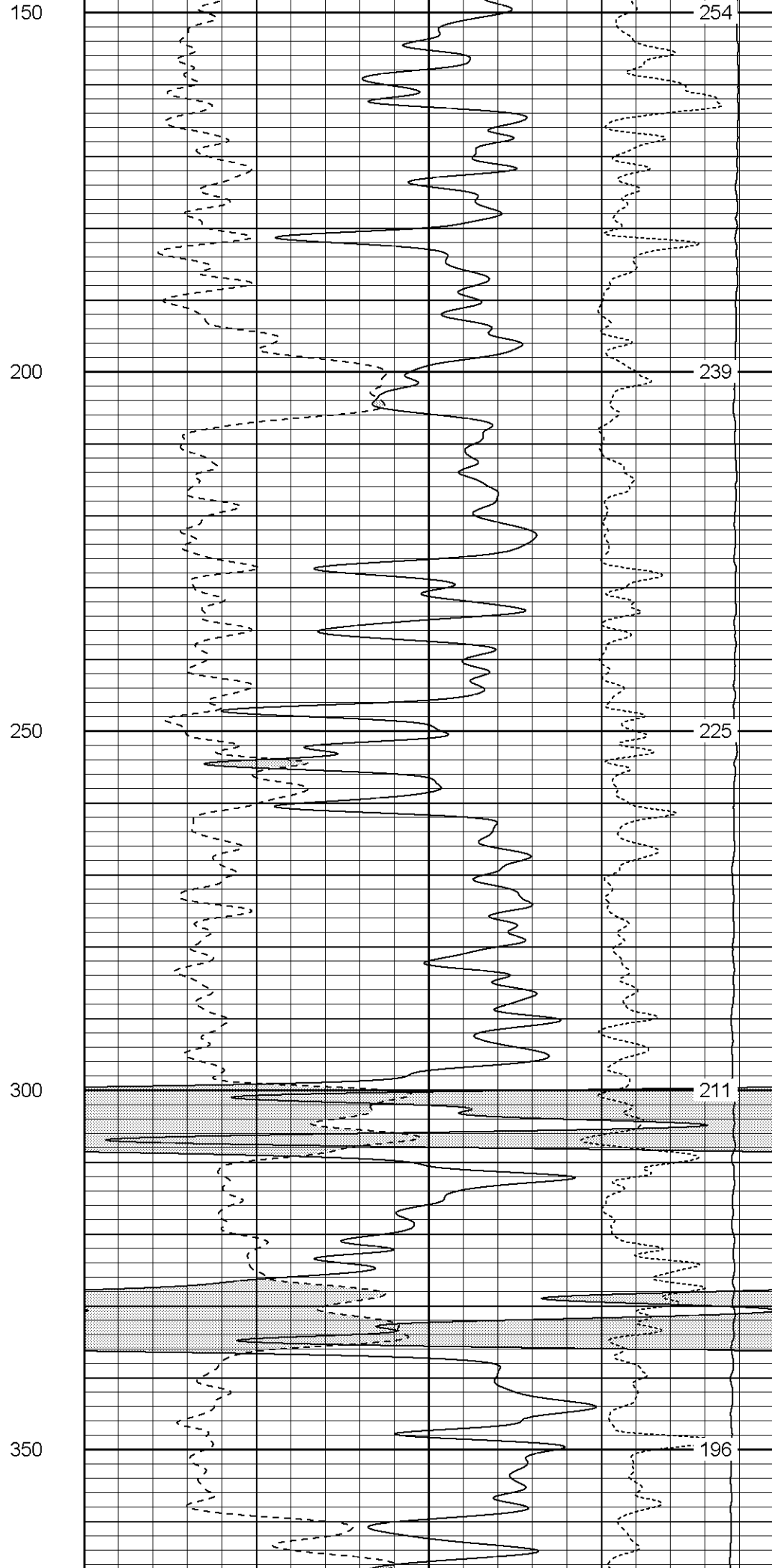
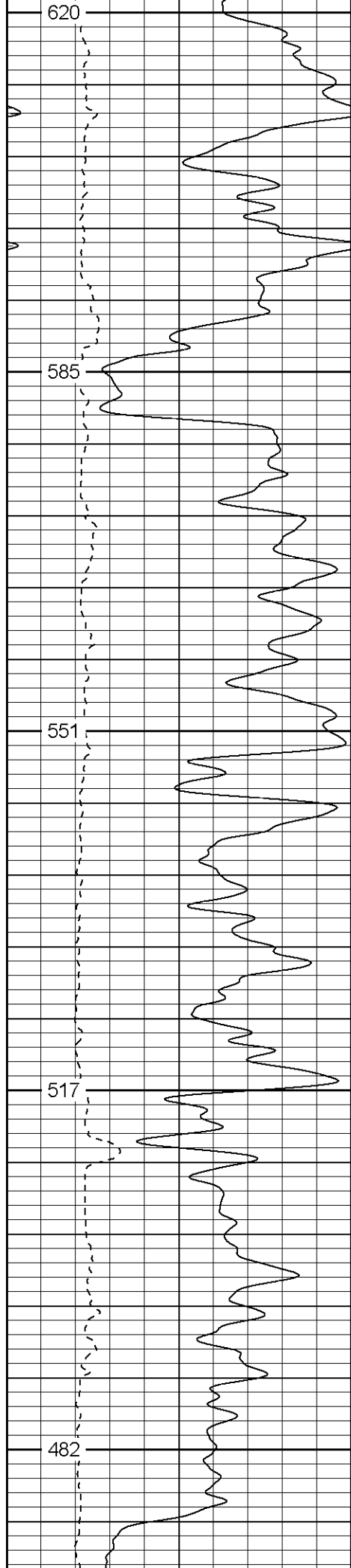
Main Pass

Database File:
Dataset Pathname:
Presentation Format:
Dataset Creation:
Charted by:

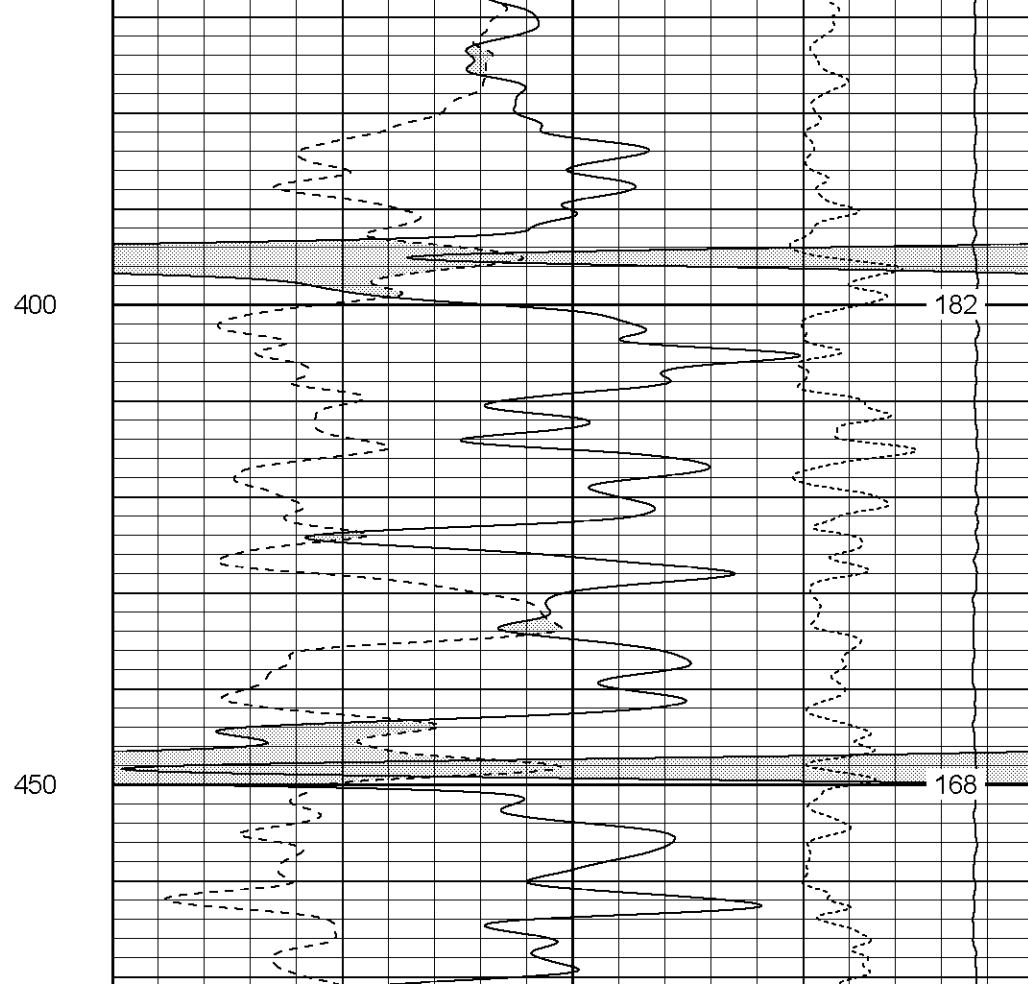
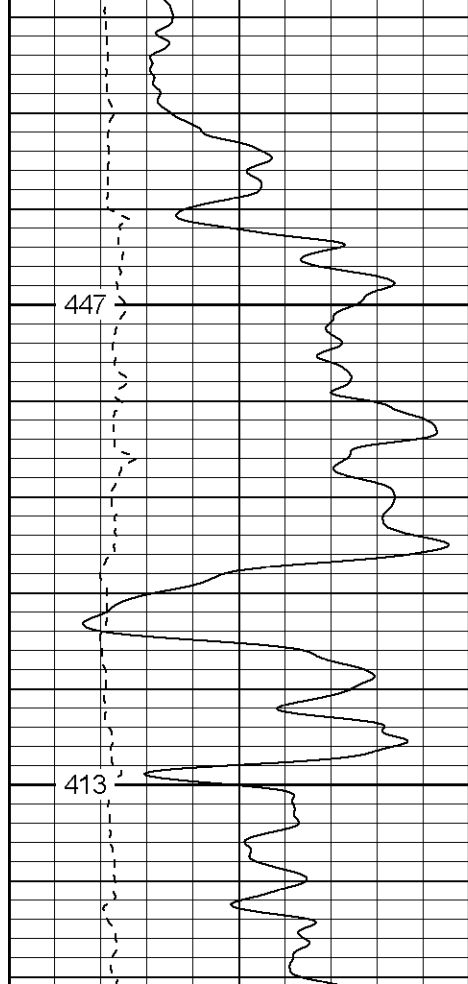
xtoge2004120405.db
pass3.4
cdnl
Mon Dec 05 08:27:20 2005 by Calc Warrior 7.0 STD Ope
Depth in Feet scaled 1:240

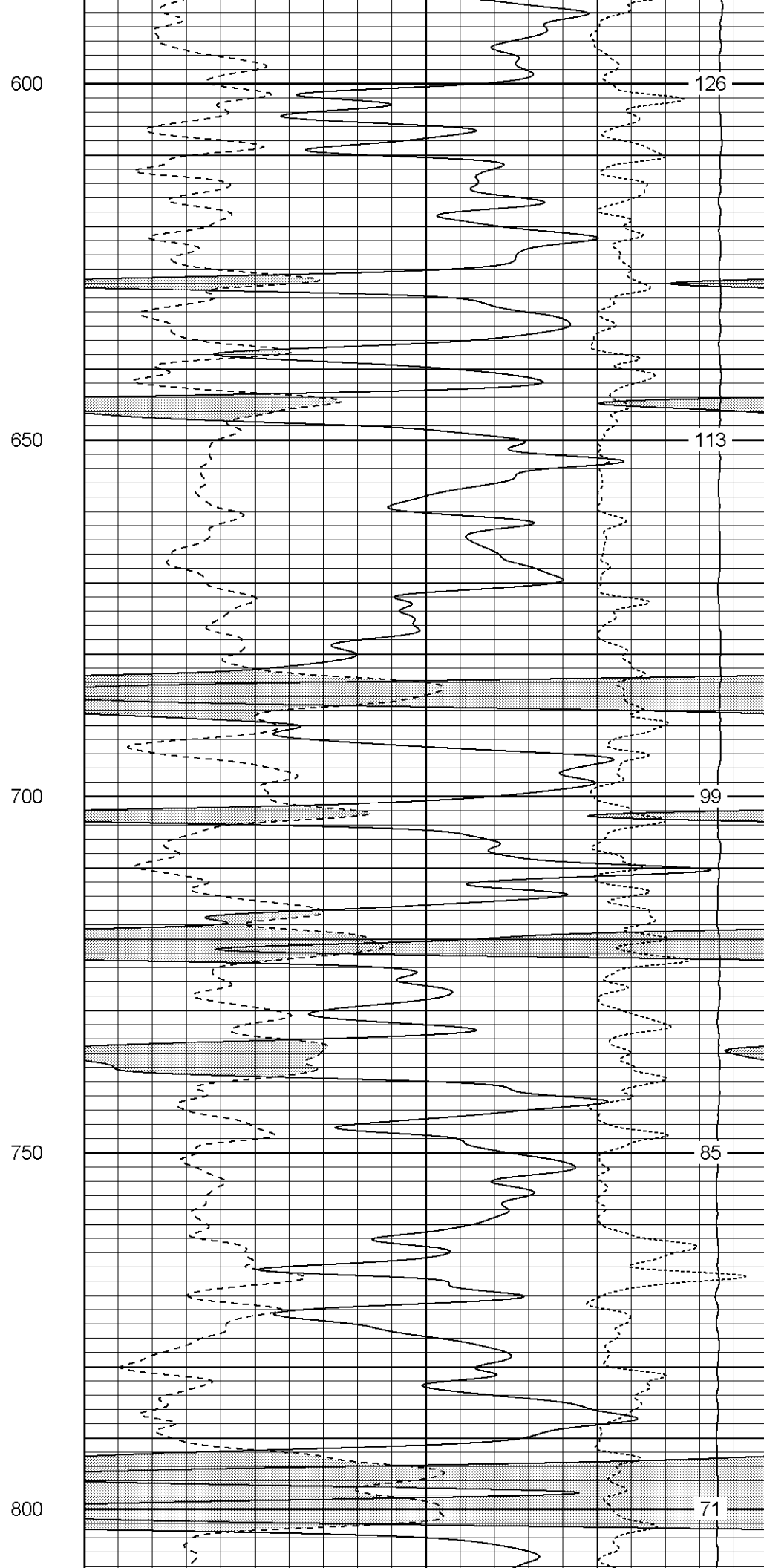
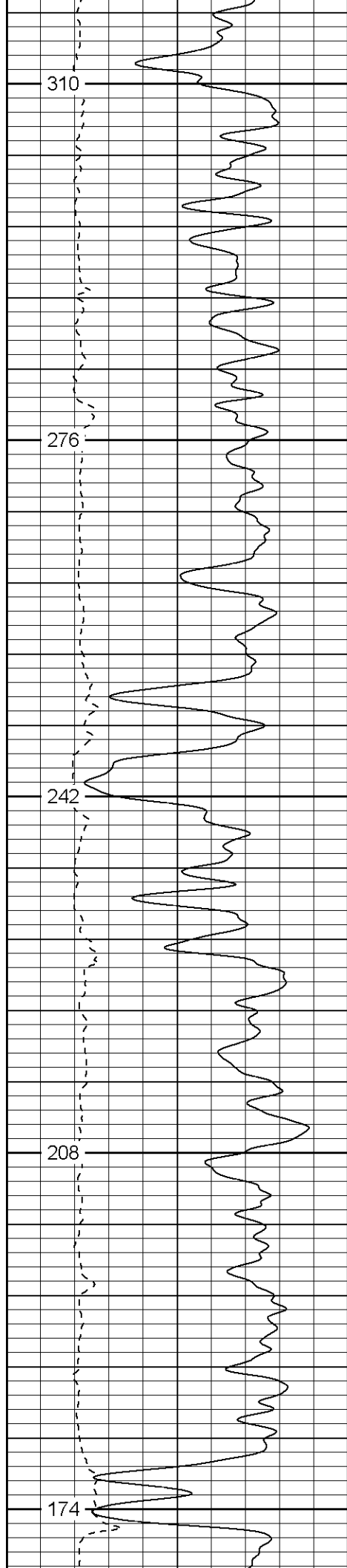
0	GR (GAPI)	200	30	NPOR (pu)	-10	
9	DCAL (in)	19	30	DPOR (pu)	-10	
				-0.5	RHOC (g/cc)	0.5
				5000	LTEN (lb)	0

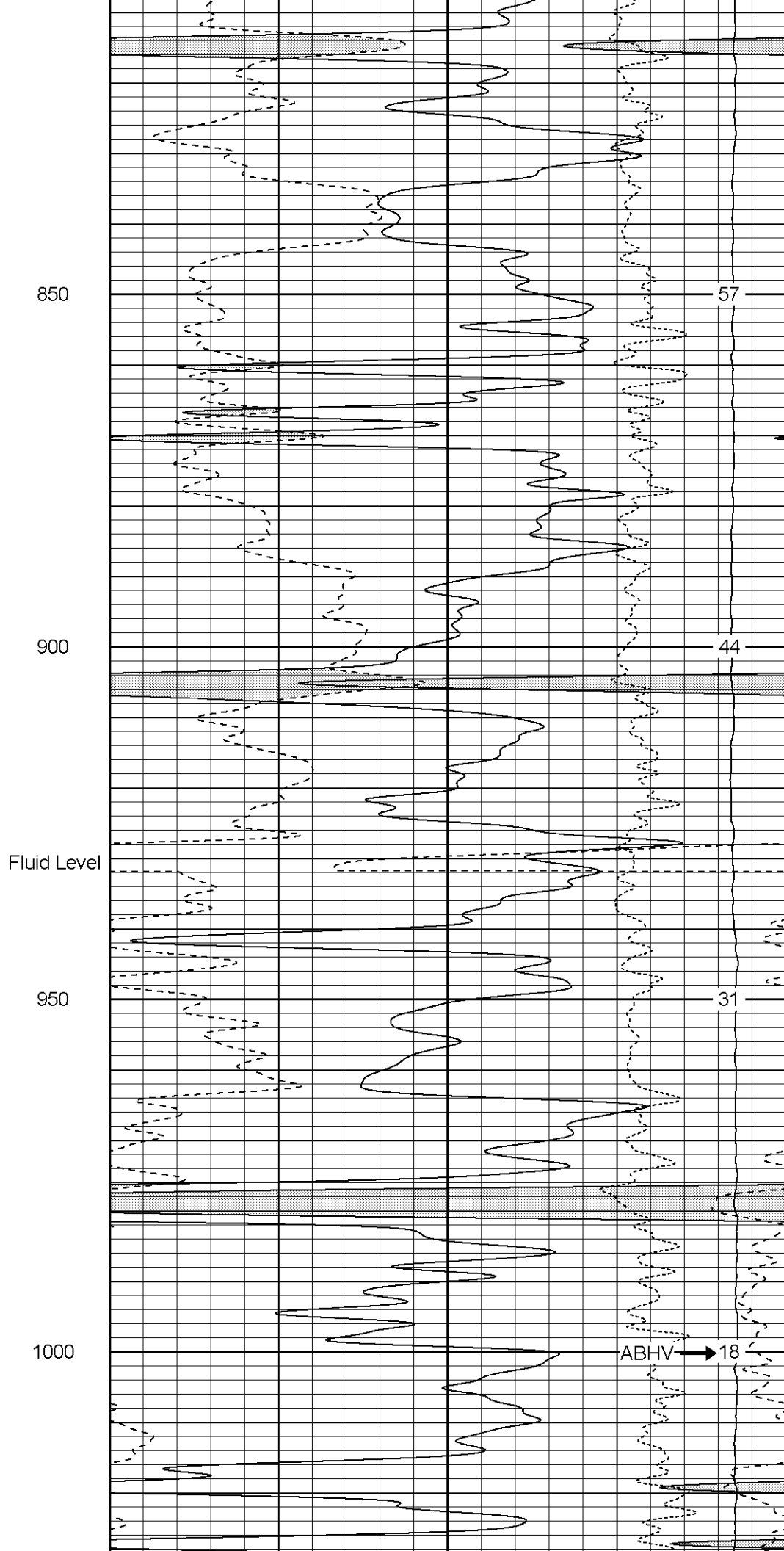
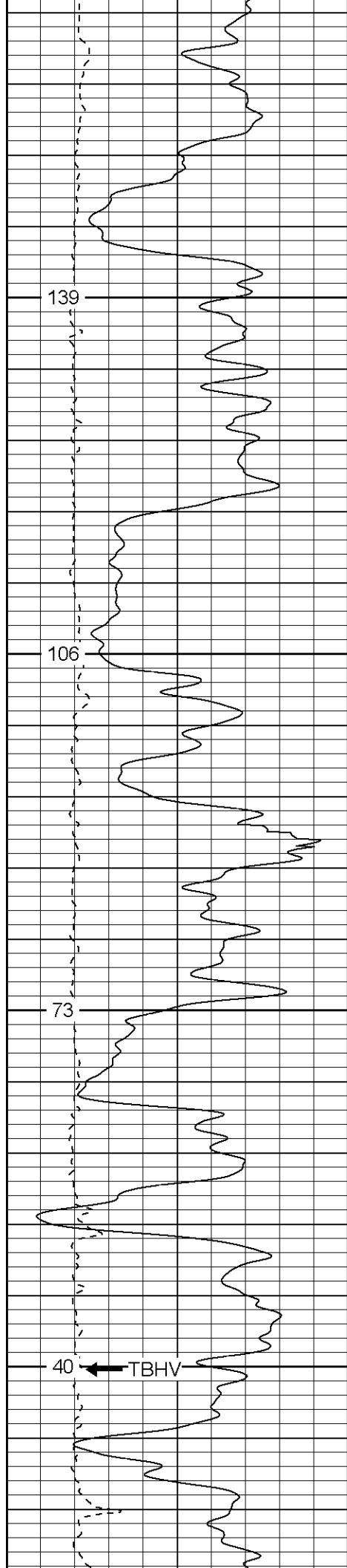


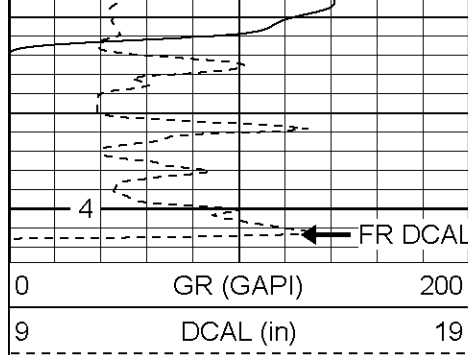




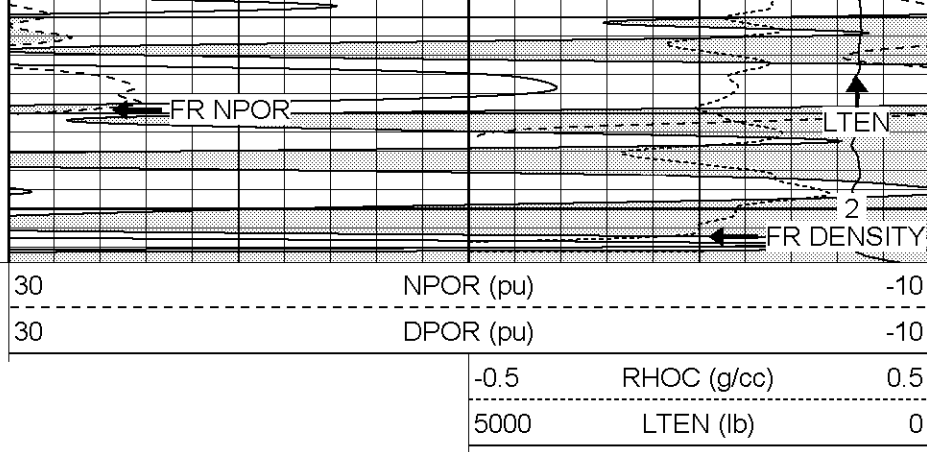








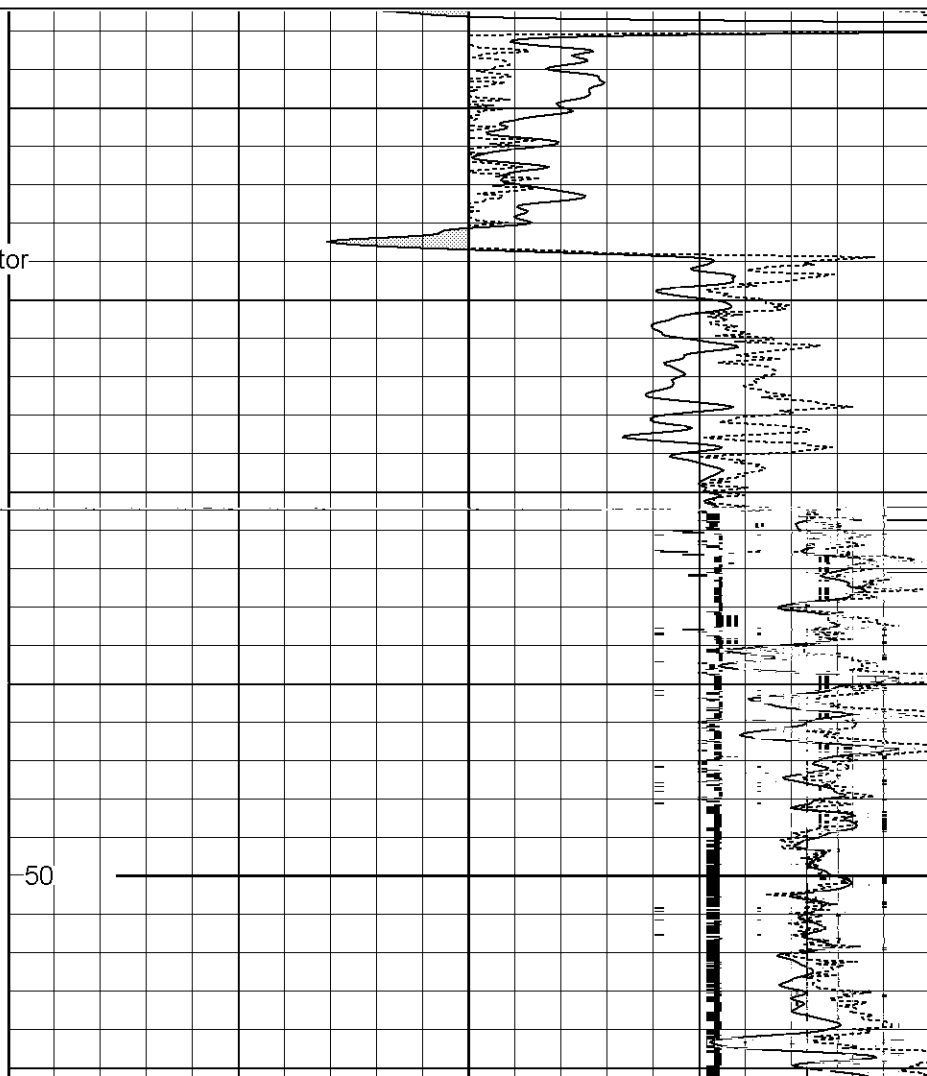
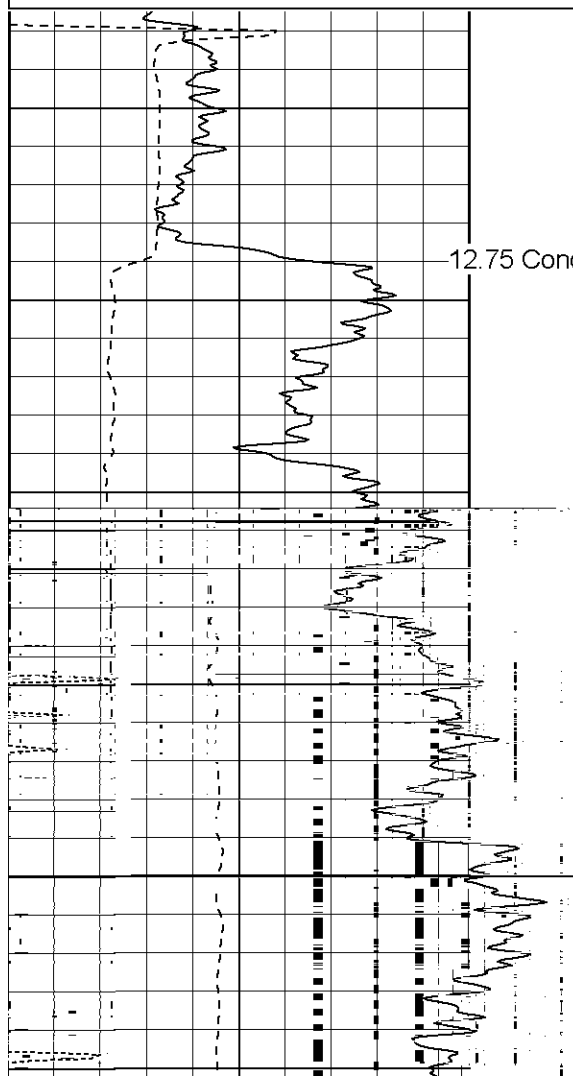
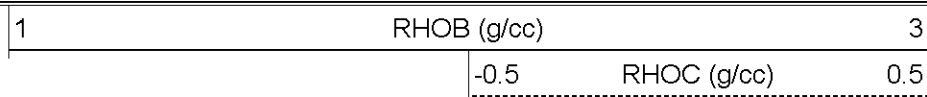
1050

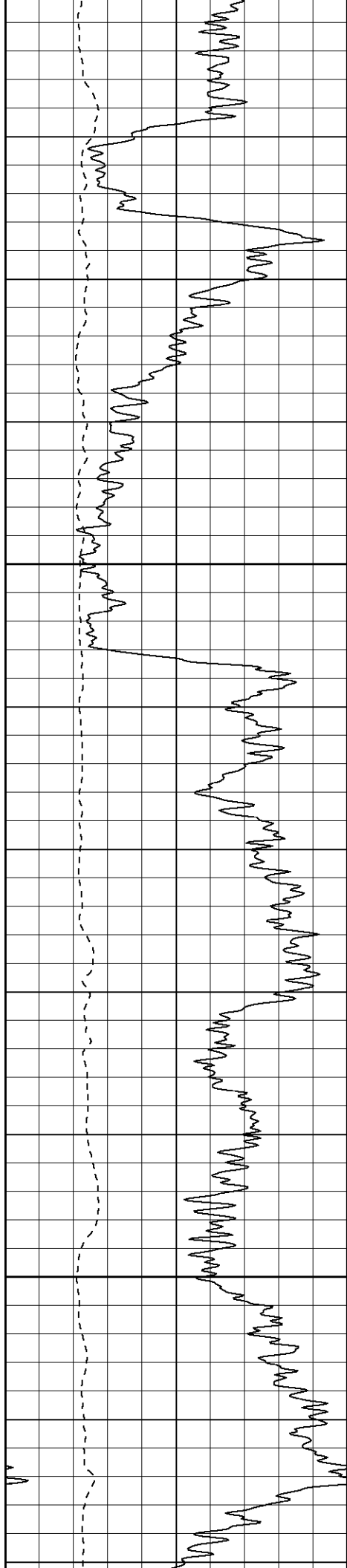


**Patterson**

# High Resolution Pass

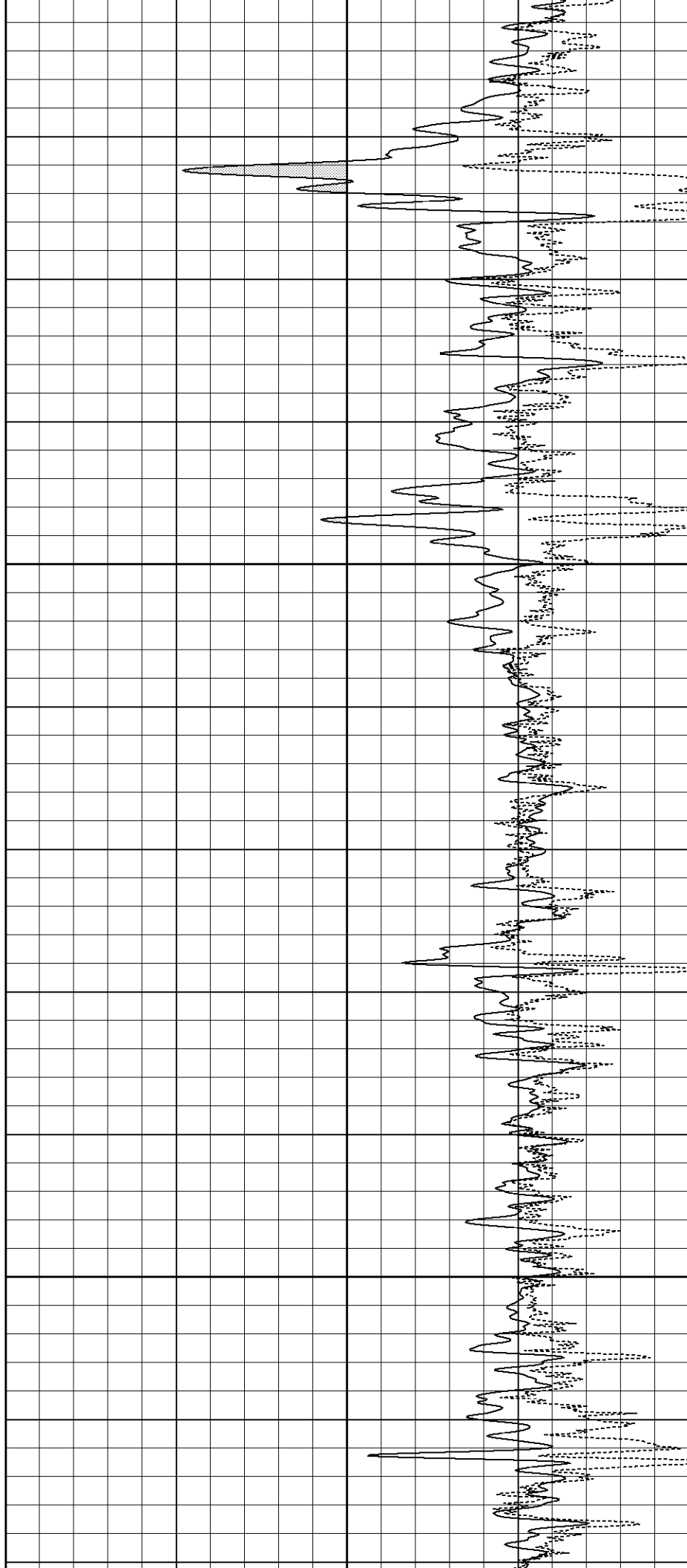
Database File: xtoge2004120405.db  
 Dataset Pathname: pass3.5  
 Presentation Format: cdlhr  
 Dataset Creation: Mon Dec 05 08:42:41 2005 by Calc Warrior 7.0 STD Ope  
 Charted by: Depth in Feet scaled 1:120

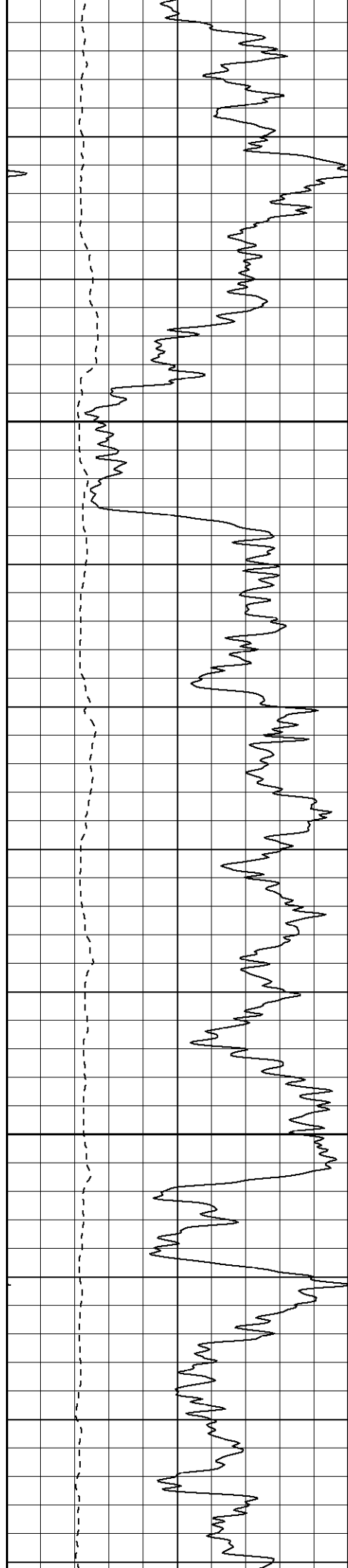




100

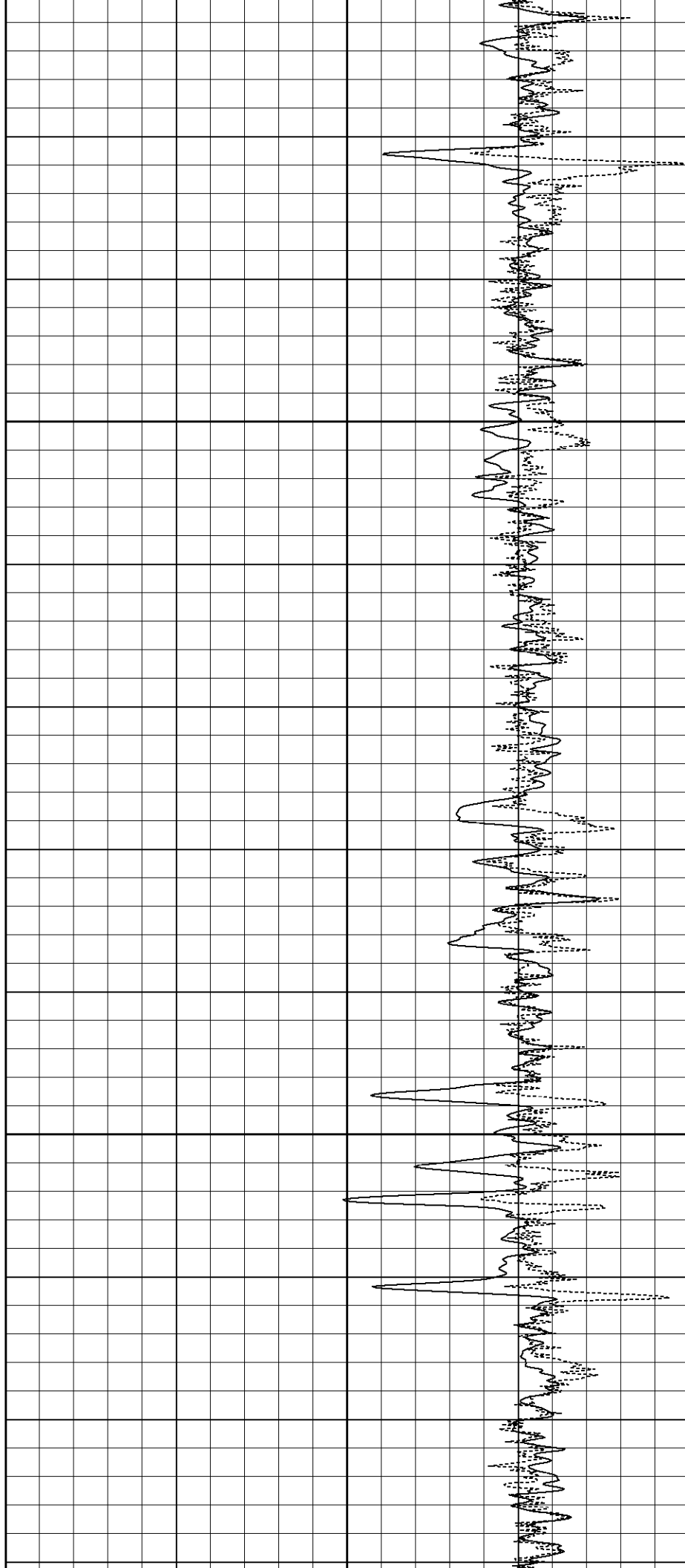
150

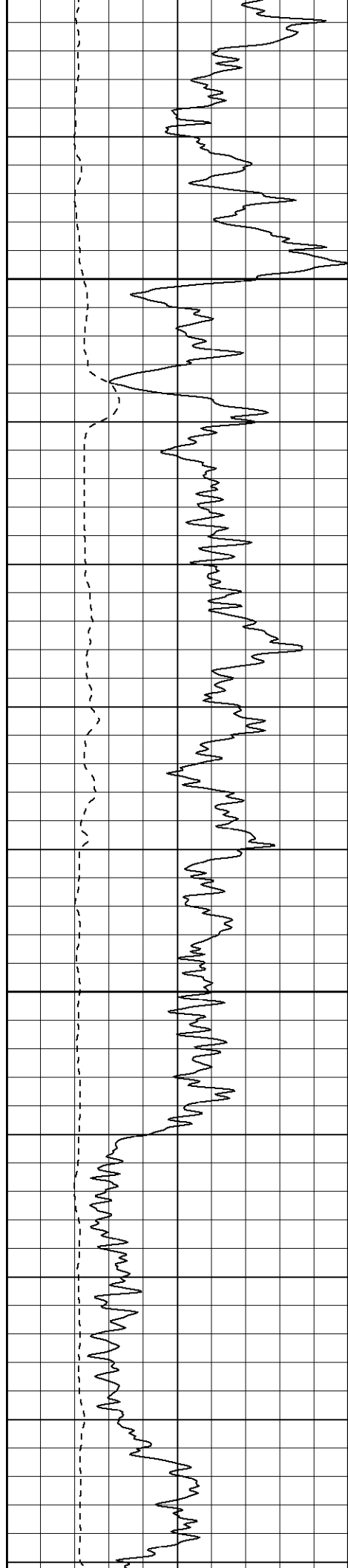




200

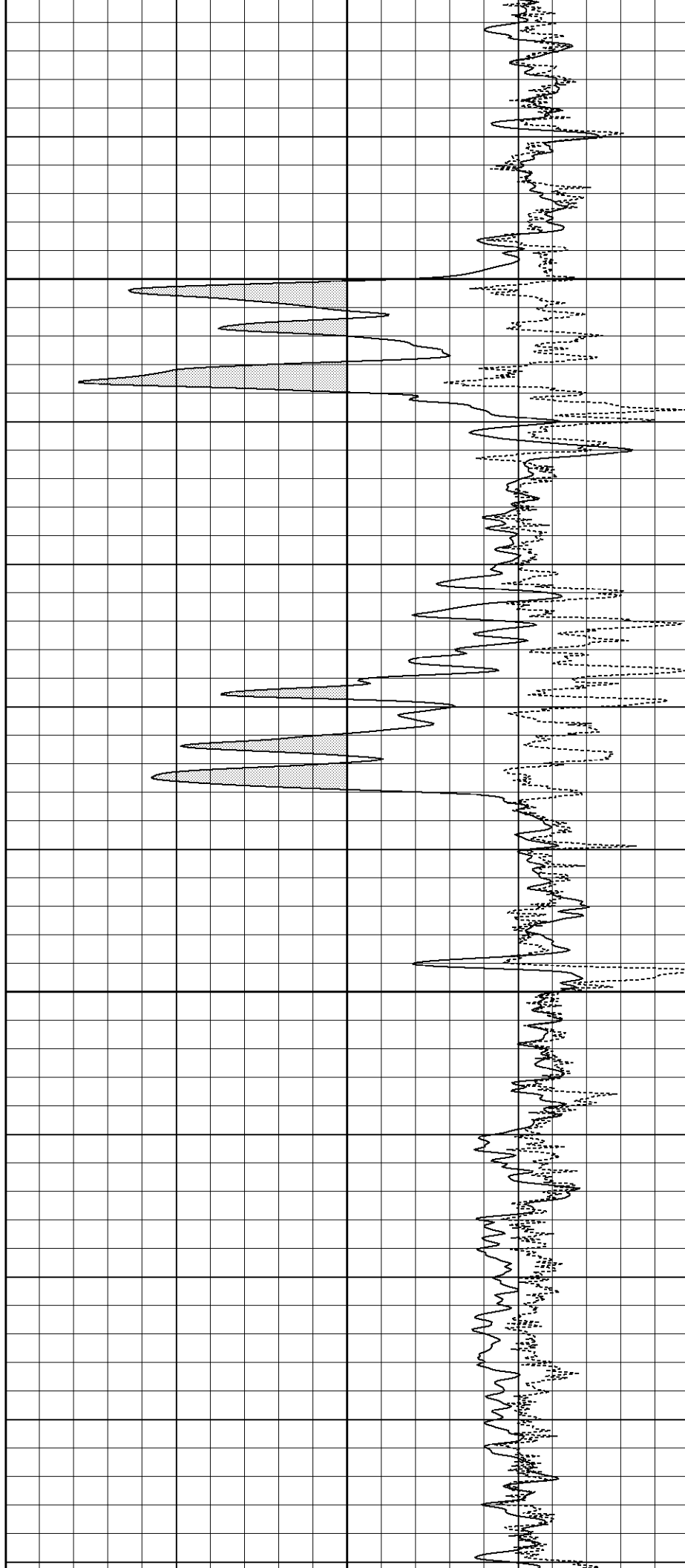
250

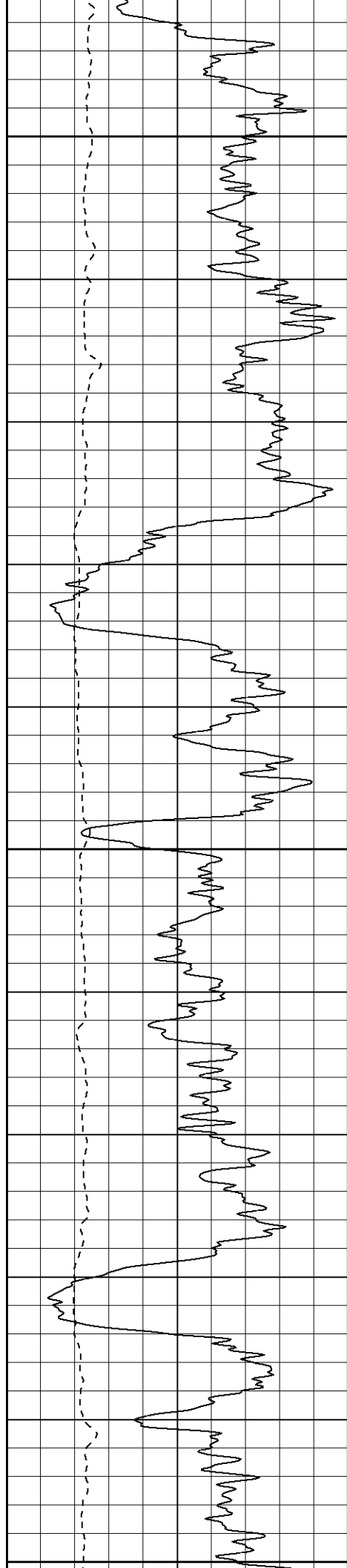




300

350

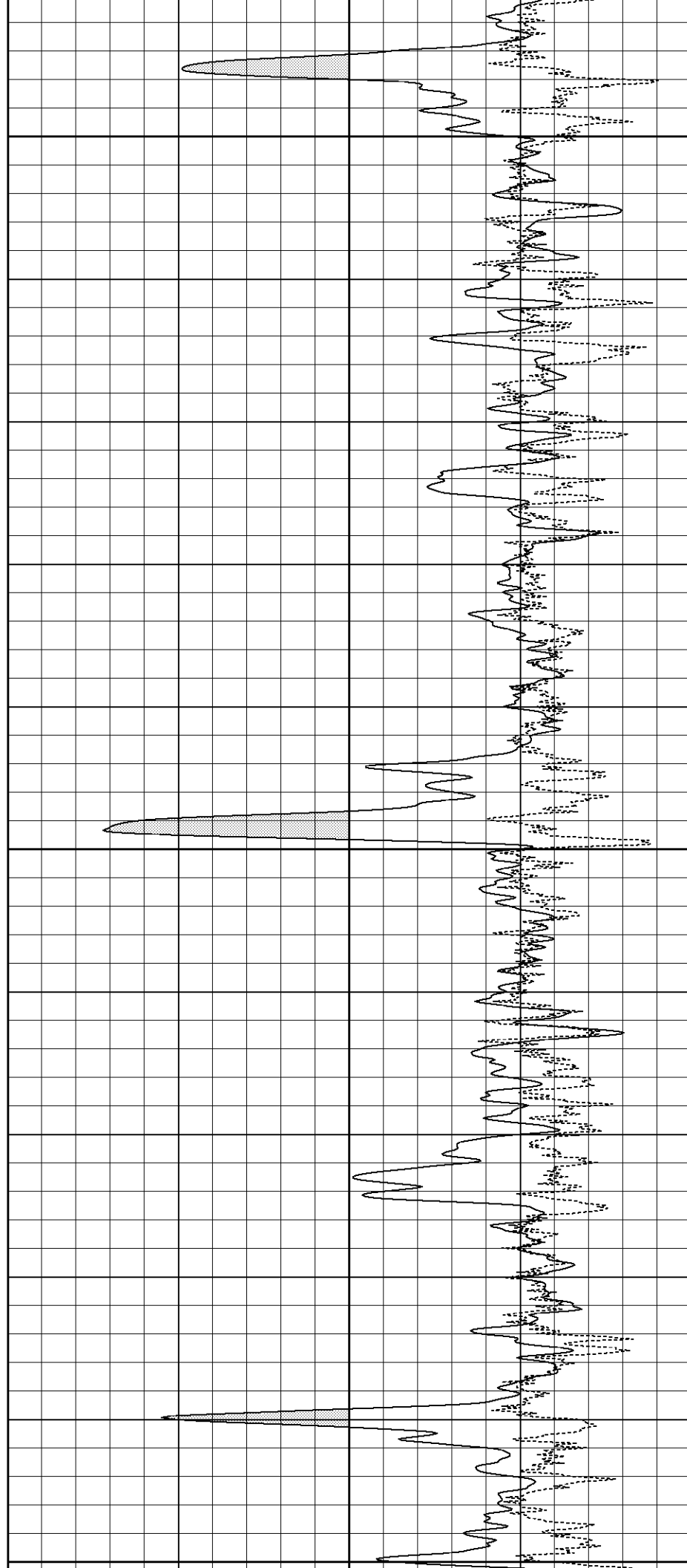




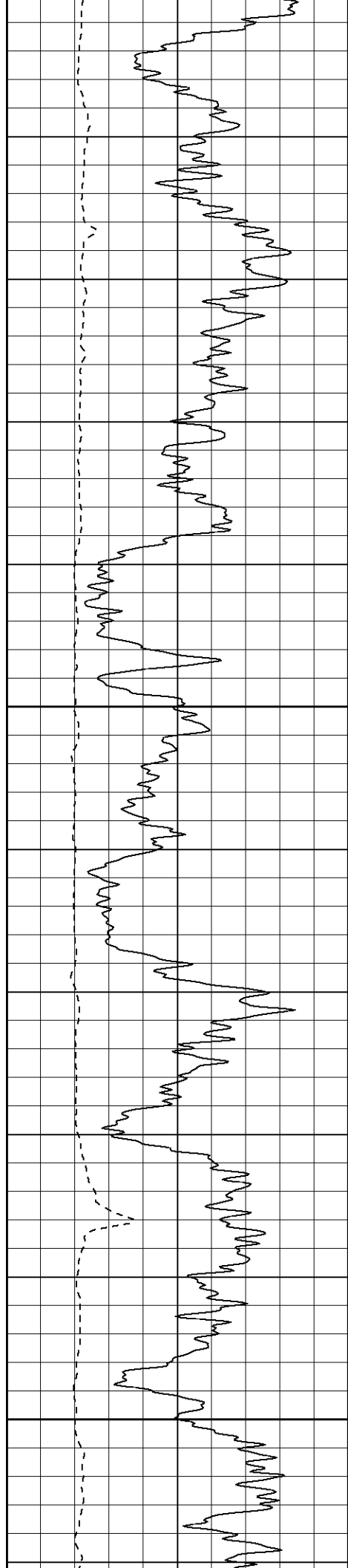
400

450

500

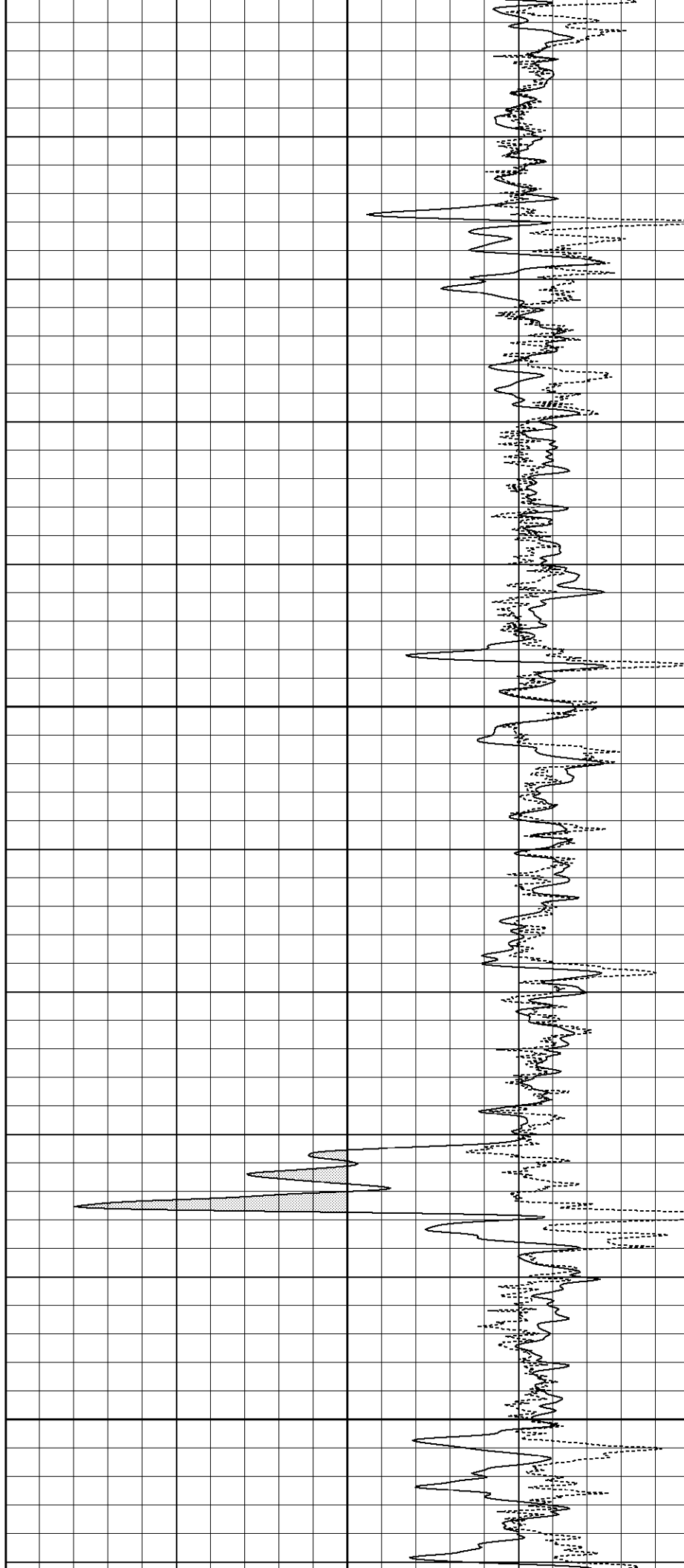


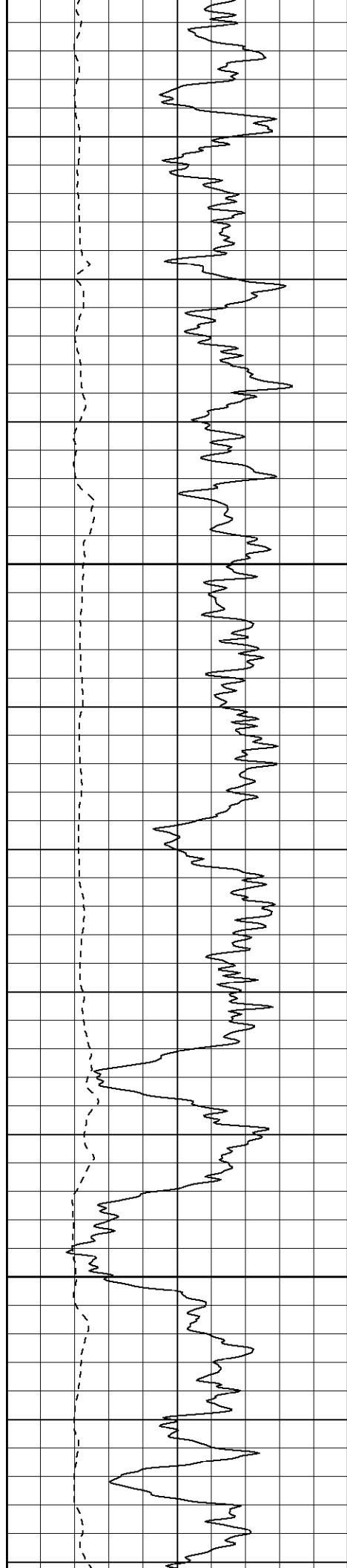




550

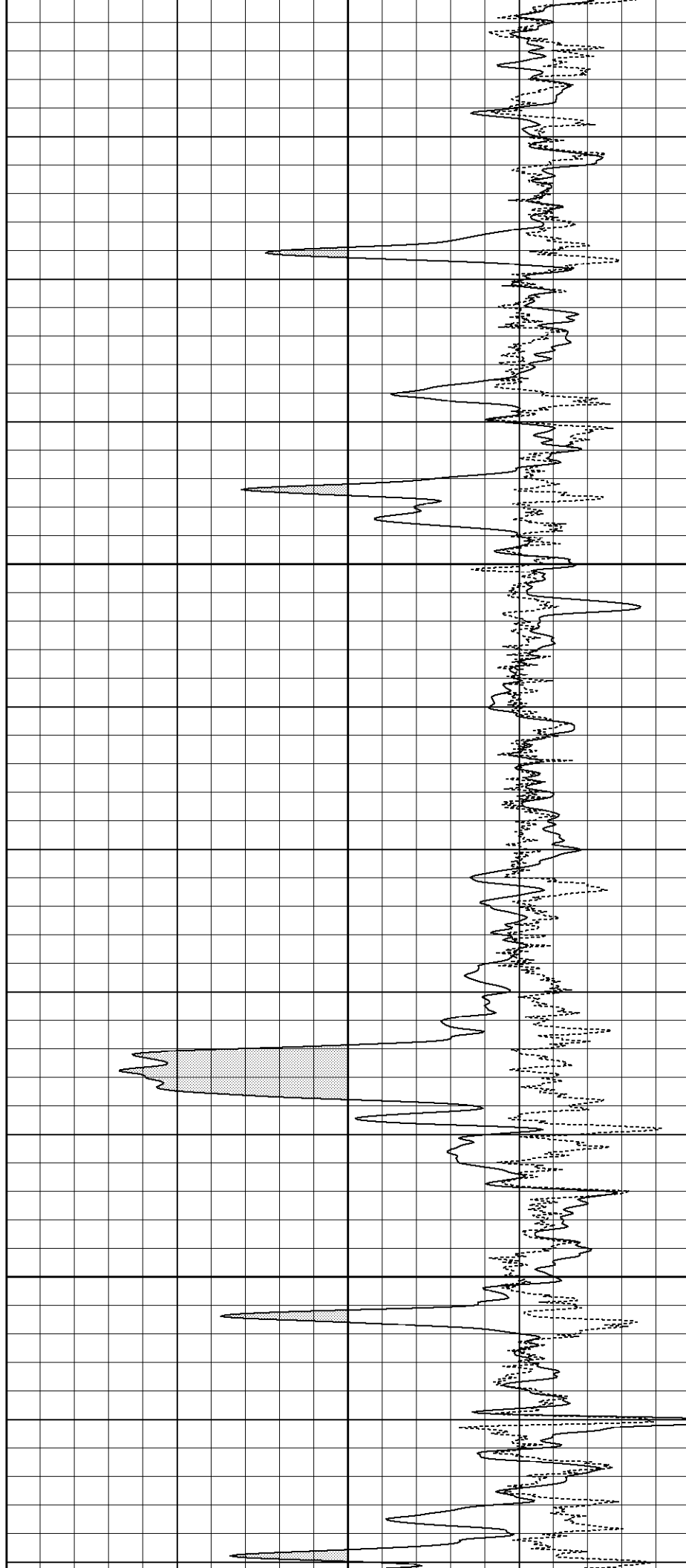
600

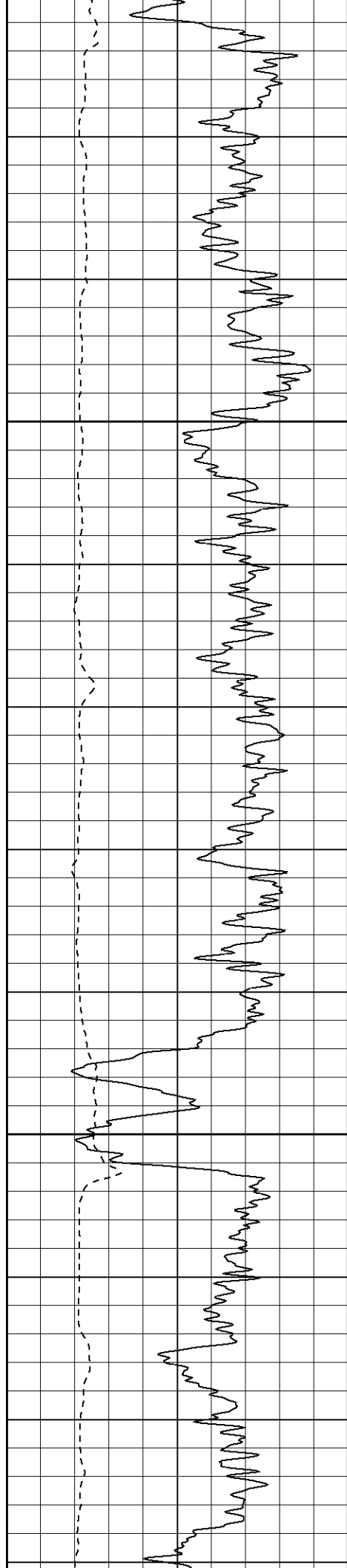




650

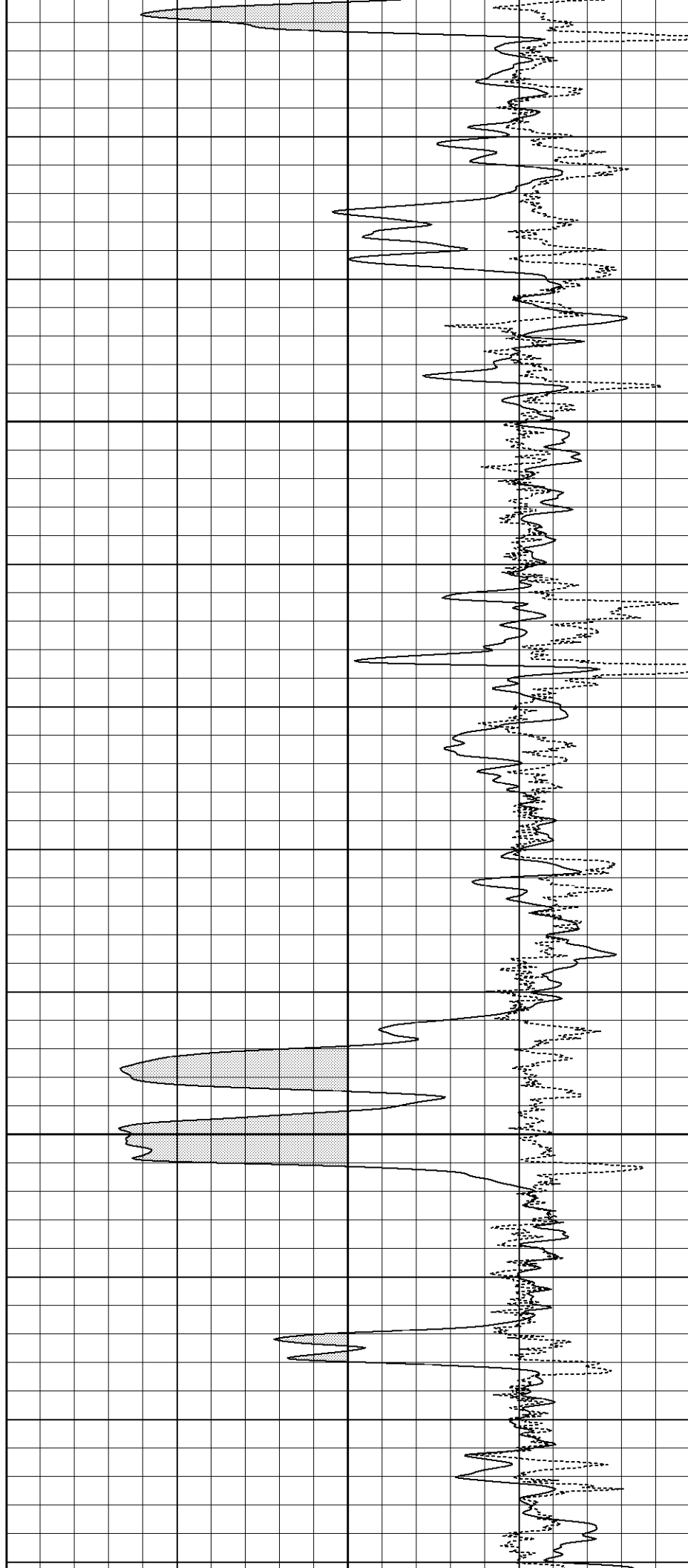
700

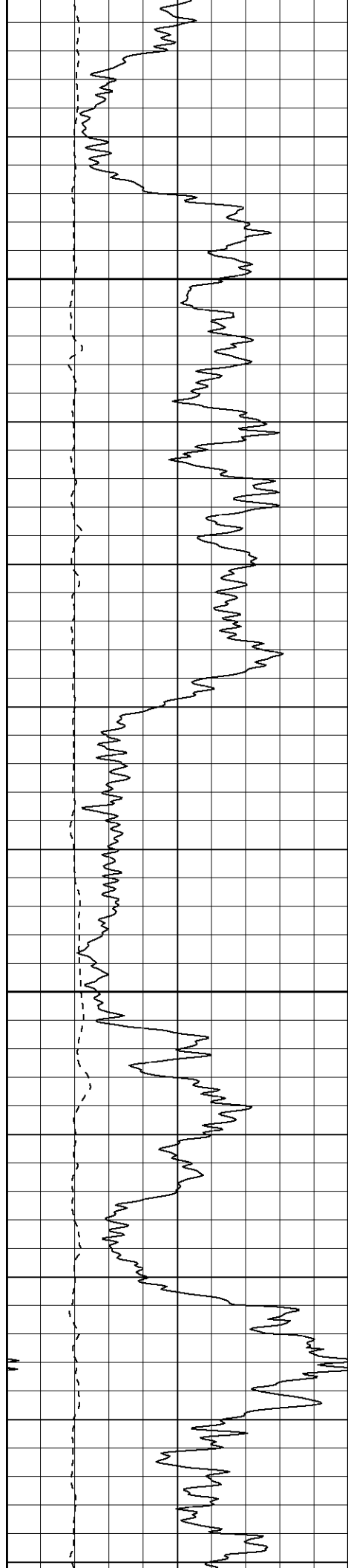




750

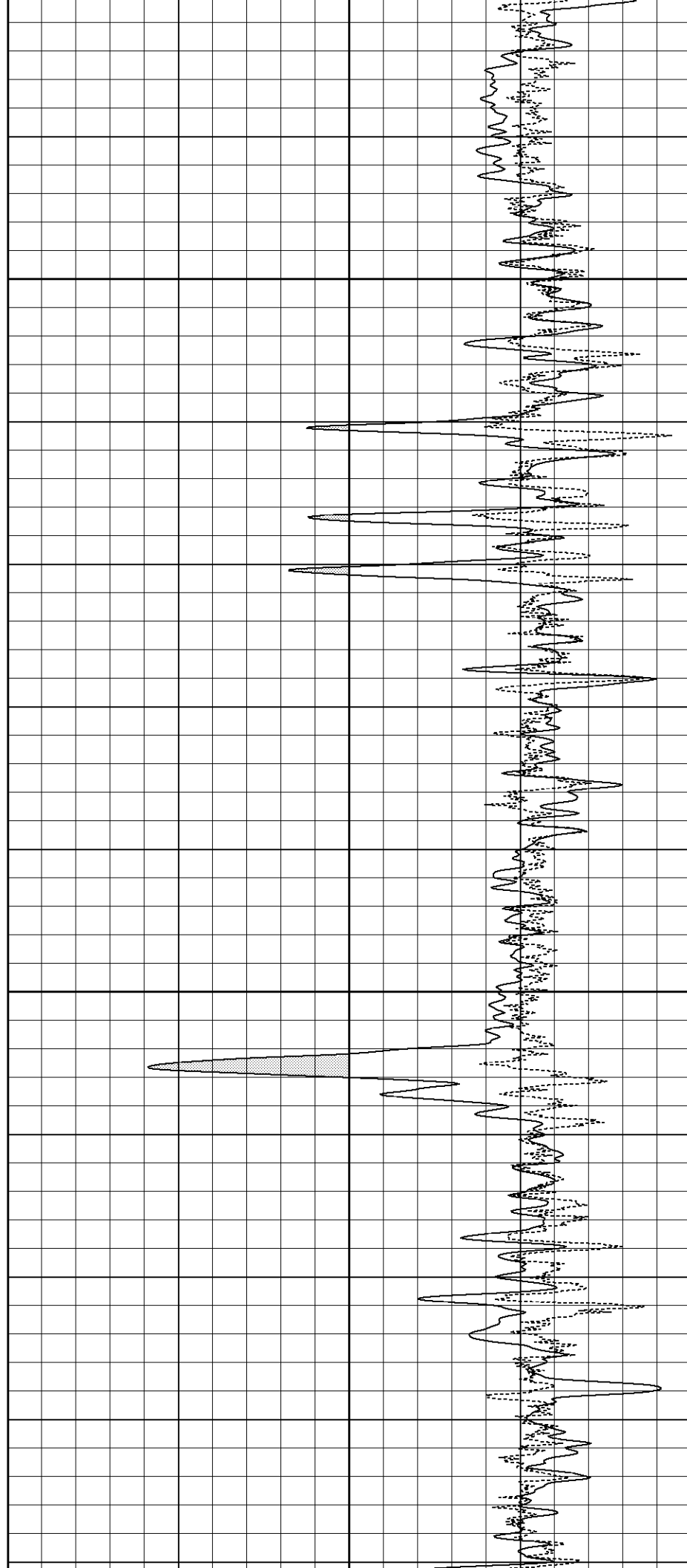
800

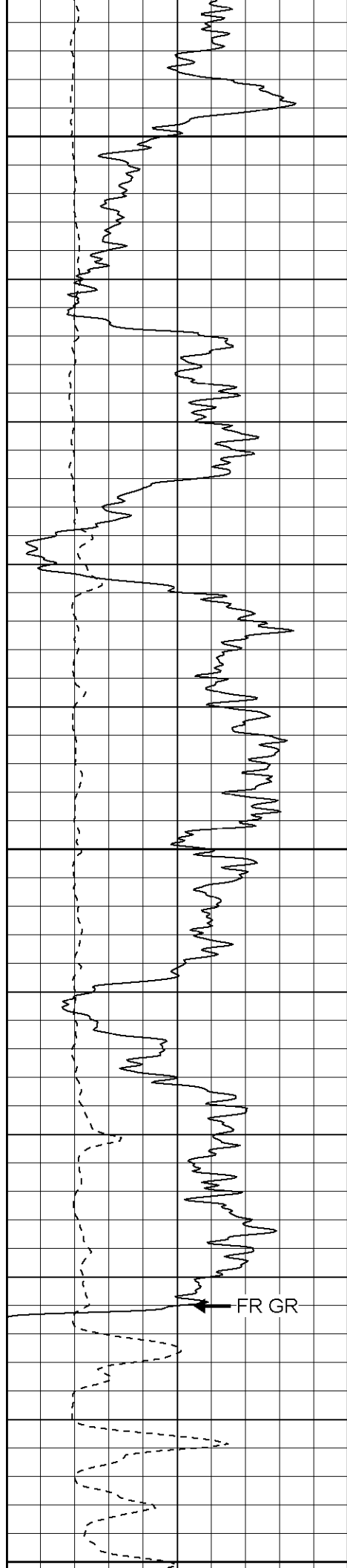




850

900

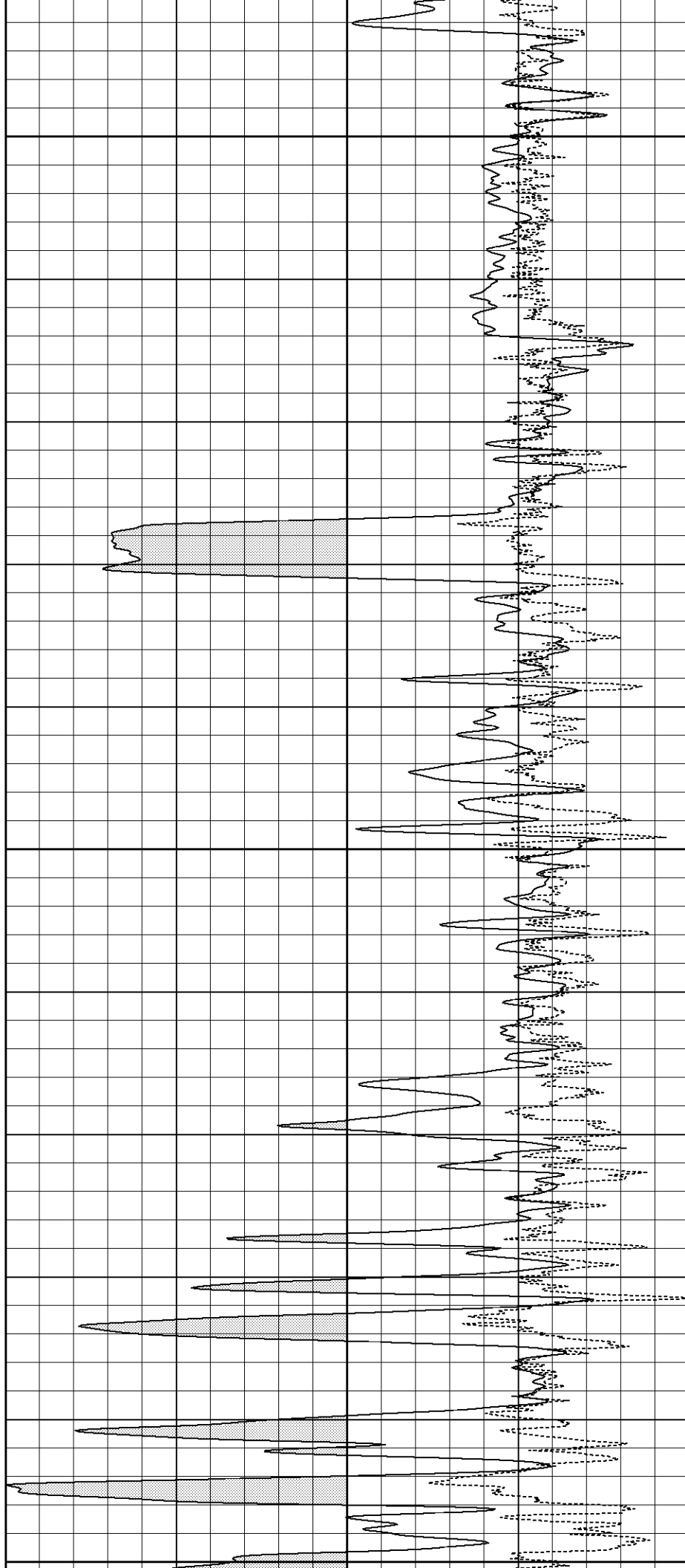


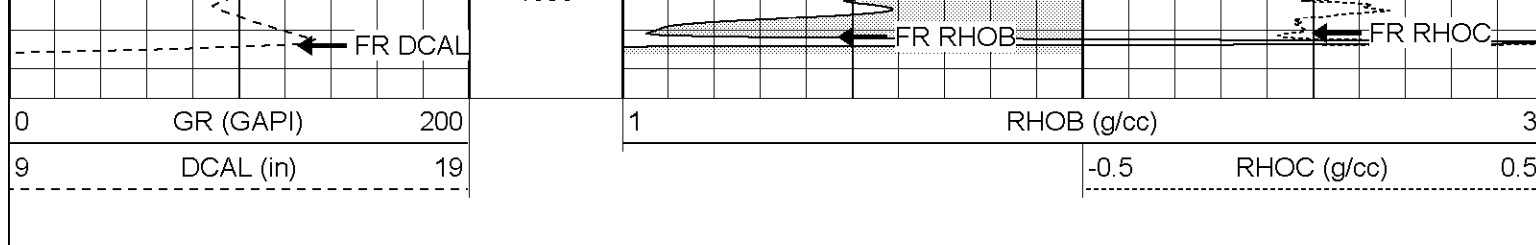


950

1000

1050





### Compensated Density Calibration Report

Serial-Model: 2388-G  
 Source / Verifier: csv-j12 / blocks  
 Master Calibration Performed: Tue Nov 08 14:12:56 2005

#### Master Calibration

	Density		Far Detector	Near Detector	
Magnesium	1.710	g/cc	845.20	472.83	cps
Aluminum	2.590	g/cc	191.56	329.04	cps
Spine Angle = 76.27			Density/Spine Ratio = 0.576		
	Size		Reading		
Small Ring	8.00	in	1.59	V	
Large Ring	14.00	in	4.61	V	

### Gamma Ray Calibration Report

Serial Number: 2388OH  
 Tool Model: D  
 Performed: Sat Nov 12 19:16:37 2005

Calibrator Value: 170.0 GAPI

Background Reading: 55.0 cps  
 Calibrator Reading: 201.0 cps

Sensitivity: 0.9000 GAPI/cps

### Neutron Calibration Report

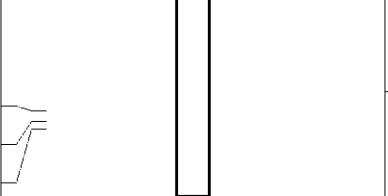
Serial Number: 5138  
 Tool Model: G  
 Performed: Wed Nov 02 08:17:22 2005

Calibrator Value: 1 NAPI

Calibrator Reading: 1 cps

Sensitivity: 1 NAPI/cps

Sensor	Offset (ft)	Schematic	Description	Len (ft)	OD (in)	Wt (lb)
CHD	15.92		None	0.75	1.50	5.00
NEU	14.12		NEU-G (5138) Gearhart Epithermal	5.75	3.50	85.00
GR	8.92		GR-D (2388OH) Gearhart	2.50	3.63	74.00

LSD	2.83		CDL-G (2388) Gearhart	6.92	4.00	201.00
DCAL	2.50					
SSD	2.25					

Dataset: /field/well/run1/\_plots/\_jobs\_/cdl

Total Length: 15.92 ft

Total Weight: 365.00 lb

O.D. 4.00 in