



**SUPERIOR**  
Black Lick, Pa.  
Mercer, Pa.  
Wooster, Oh.  
Cleveland, Ok.  
Trinidad, Co.

## CEMENT BOND LOG

Company XTO Energy Inc.  
Well Apache Canyon 30-05-34  
Field Purgatorie River  
County Las Animas  
State CO

Company XTO Energy Inc.  
Well Apache Canyon 30-05-34  
Field Purgatorie River  
County Las Animas State CO

Location: API #: 05 071 09285 00

2192' FNL & 1007' FWL

SEC 30 TWP 34S RGE 67W

Permanent Datum Ground Level Elevation 8040'  
Log Measured From Ground Level  
Drilling Measured From Ground Level

Other Services  
Pressure  
Control  
Elevation  
K.B. -----  
D.F. -----  
G.L. 8040'

Date	7-30-07	One			
Run Number		2485'			
Depth Driller		2407'			
Bottom Logged Interval		2405'			
Top Log Interval		Surface			
Open Hole Size		7 7/8			
Type Fluid		Water			
Density / Viscosity		///			
Max. Recorded Temp.		107F			
Estimated Cement Top		96'			
Time Well Ready		ROA			
Time Logger on Bottom		2:00PM			
Equipment Number		T0698			
Location		Trinidad			
Recorded By		J. Sisneros			
Witnessed By		Mr Terry Maxwell			
Run Number	Bit	From	To	Size	Weight
					From
					To
Casing Record					
Surface String		Size		Wgt/Ft	Top
Prot. String		8 5/8"			Bottom
Production String		5.5"			496'
Liner					

<<< Fold Here >>>

All interpretations are opinions based on inferences from electrical or other measurements and we cannot and do not guarantee the accuracy or correctness of any interpretation, and we shall not, except in the case of gross or willful negligence on our part, be liable or responsible for any loss, costs, damages, or expenses incurred or sustained by anyone resulting from any interpretation made by any of our officers, agents or employees. These interpretations are also subject to our general terms and conditions set out in our current Price Schedule.

### Comments

Lower Bosque Entrance, stay on main rd. past camp ground, drive thru gate, second left,  
drive thru one location, at Y stay left, 2nd drive through location



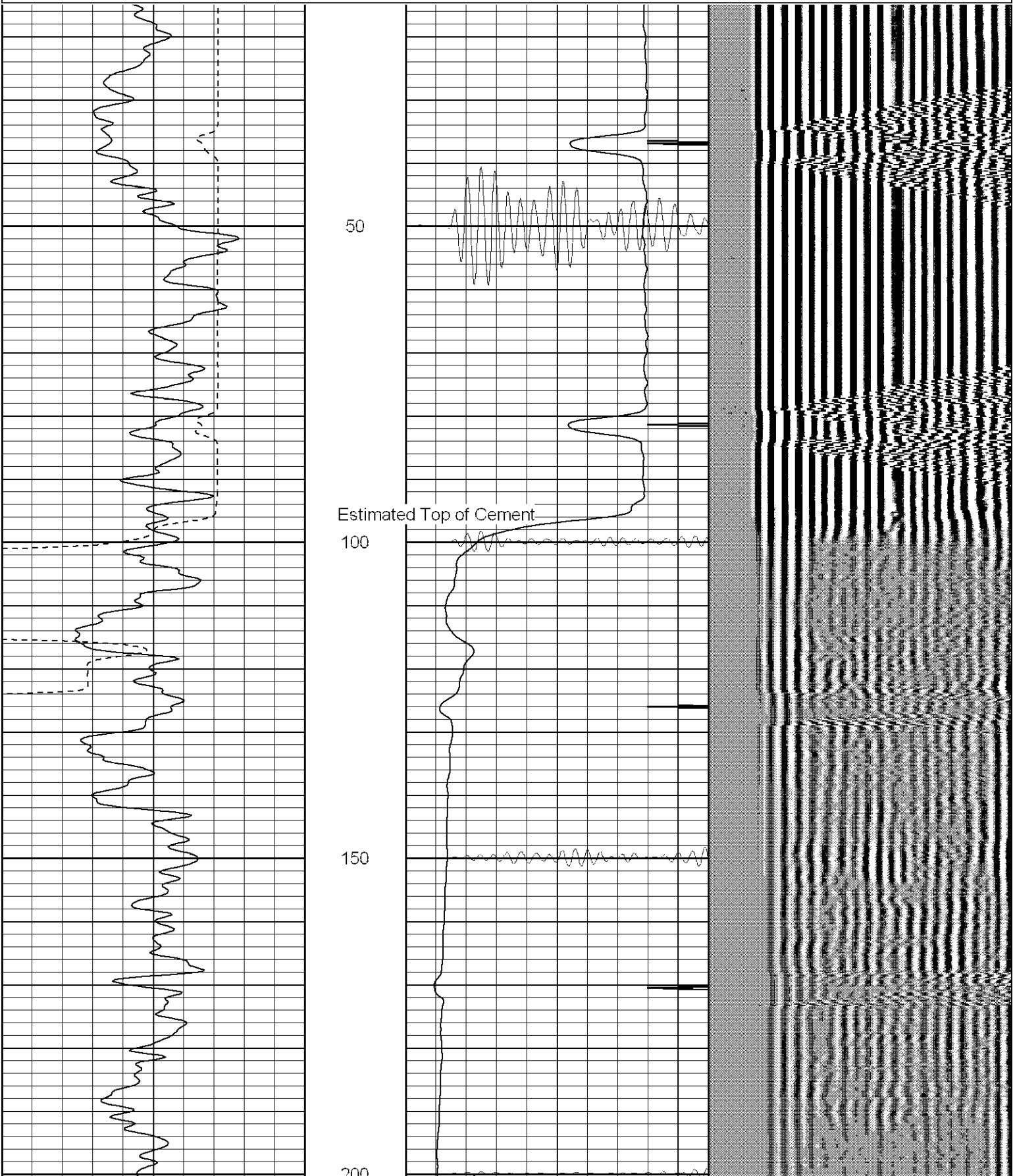
**SUPERIOR**

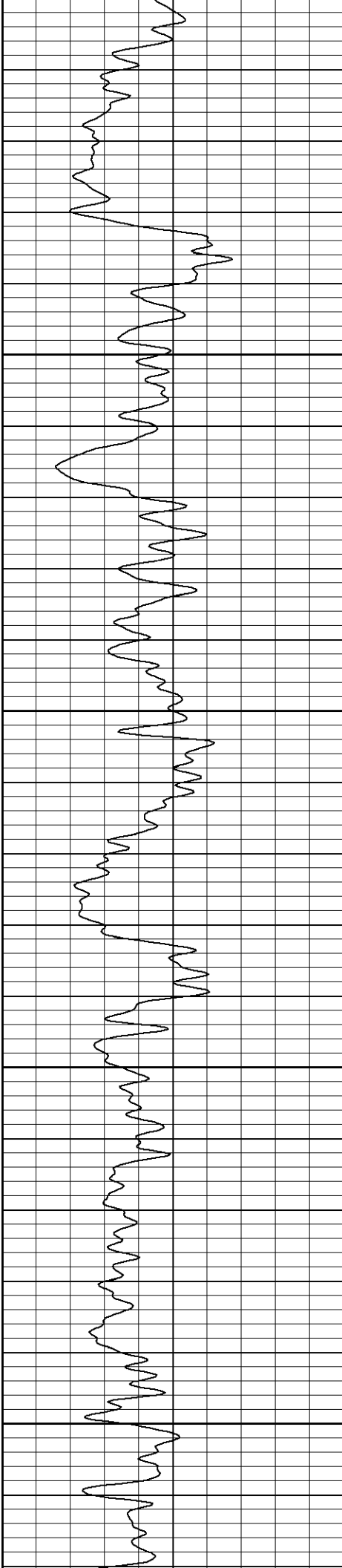
Black Lick, Pa.  
Mercer, Pa.  
Wooster, Oh.  
Cleveland, Ok.  
Trinidad, Co.

# Main Pass (1000PSI)

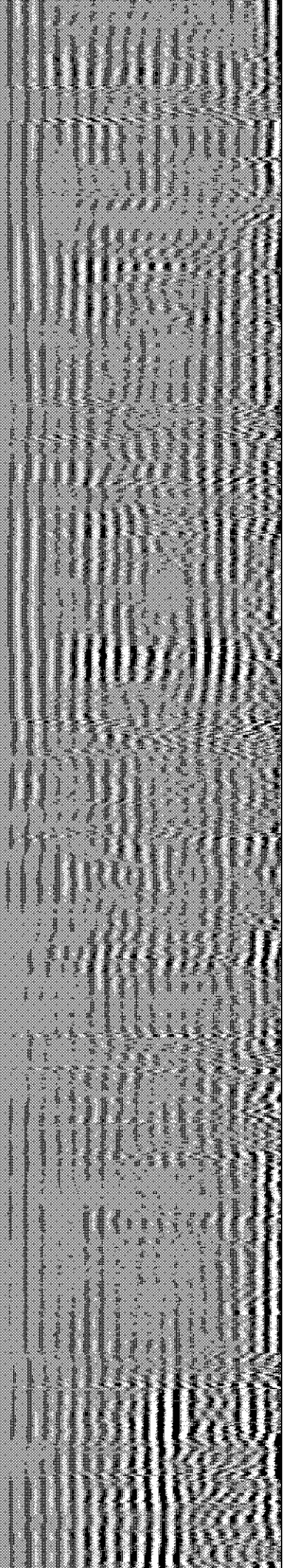
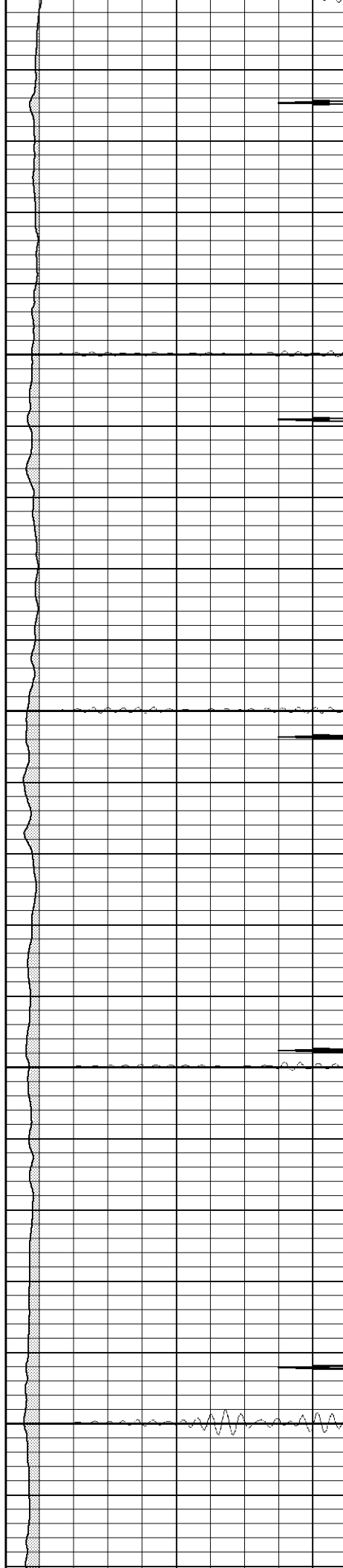
Database File: ac30053473007b.db  
Dataset Pathname: pass4  
Presentation Format: cblrt  
Dataset Creation: Tue Jul 31 07:11:42 2007  
Charted by: Depth in Feet scaled 1:240

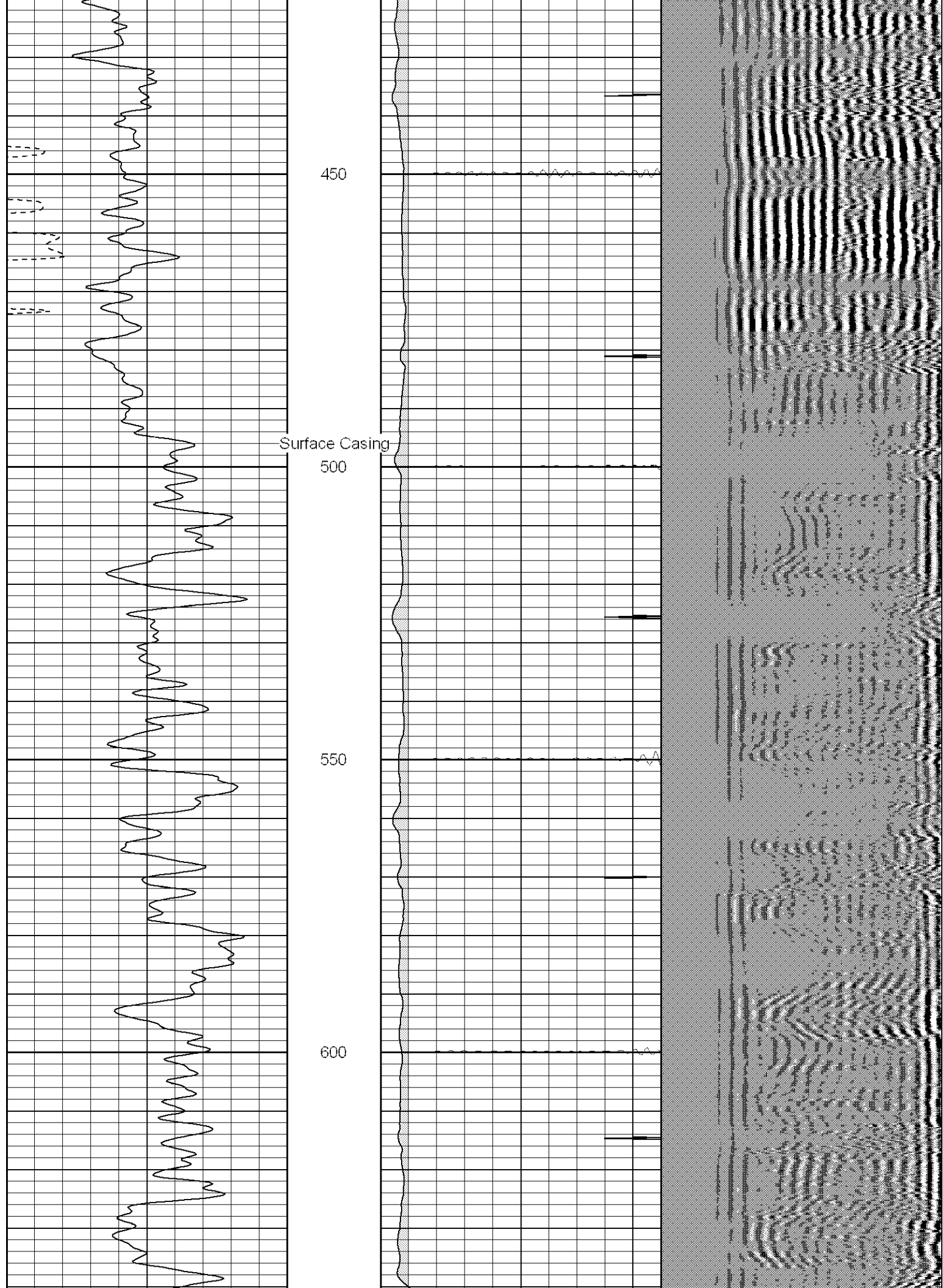
0	GR (GAPI)	200	0	AMP3 (mV)	100	200	Variable Density	1200
400	TT3 (usec)	200	18	CCL	-2			
-----			200	CBL5	1200			

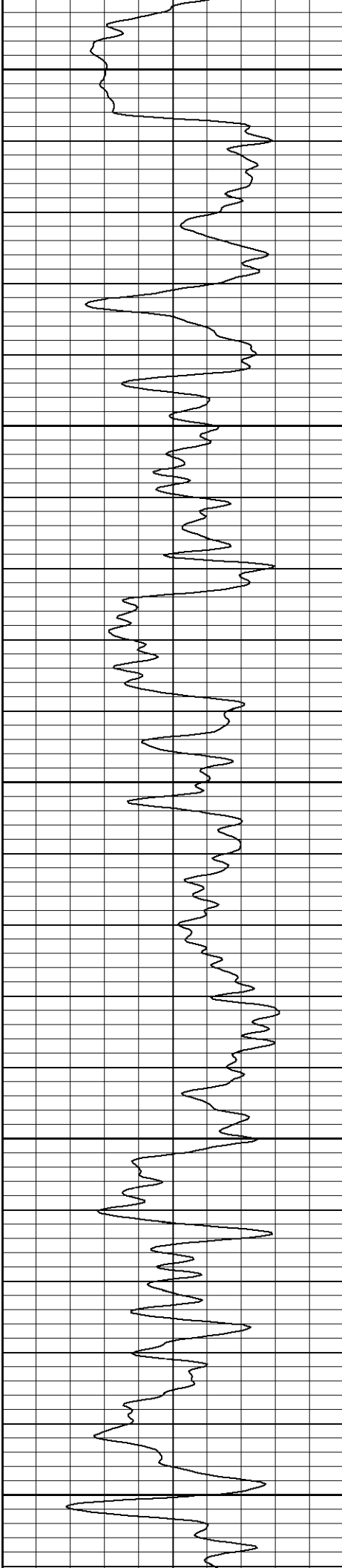




200  
250  
300  
350  
400







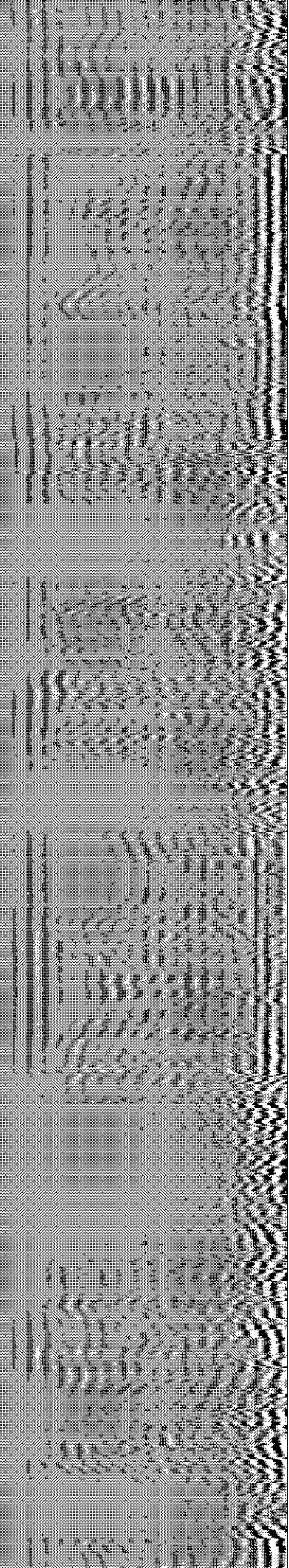
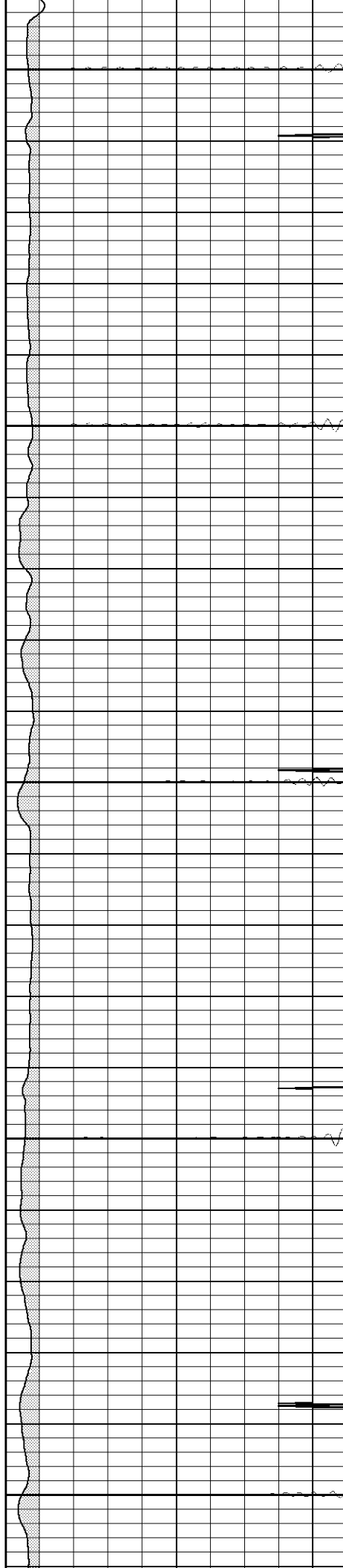
650

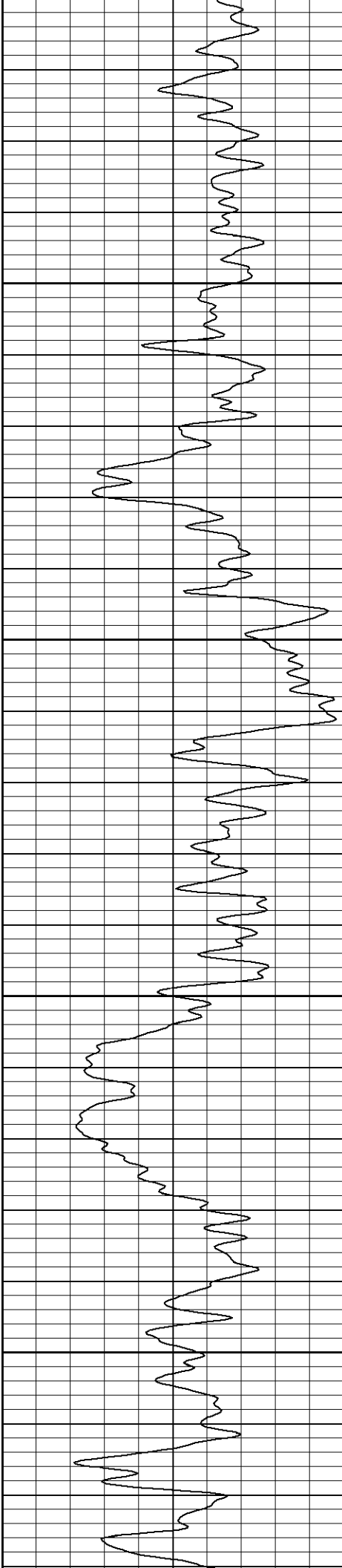
700

750

800

850



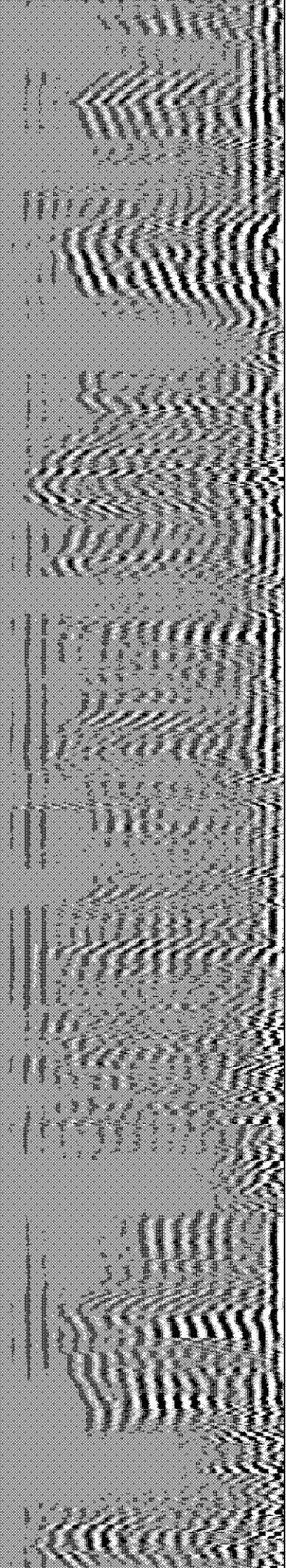
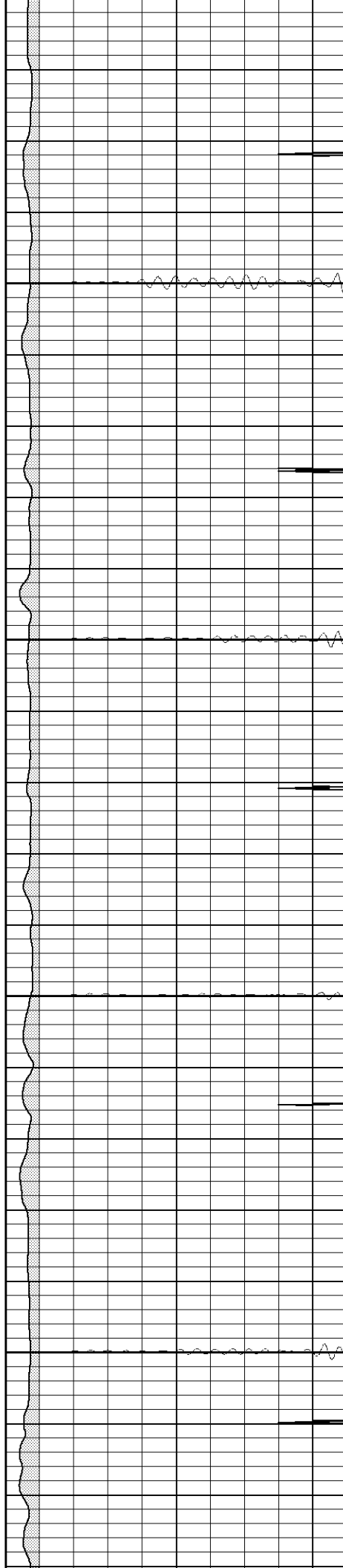


900

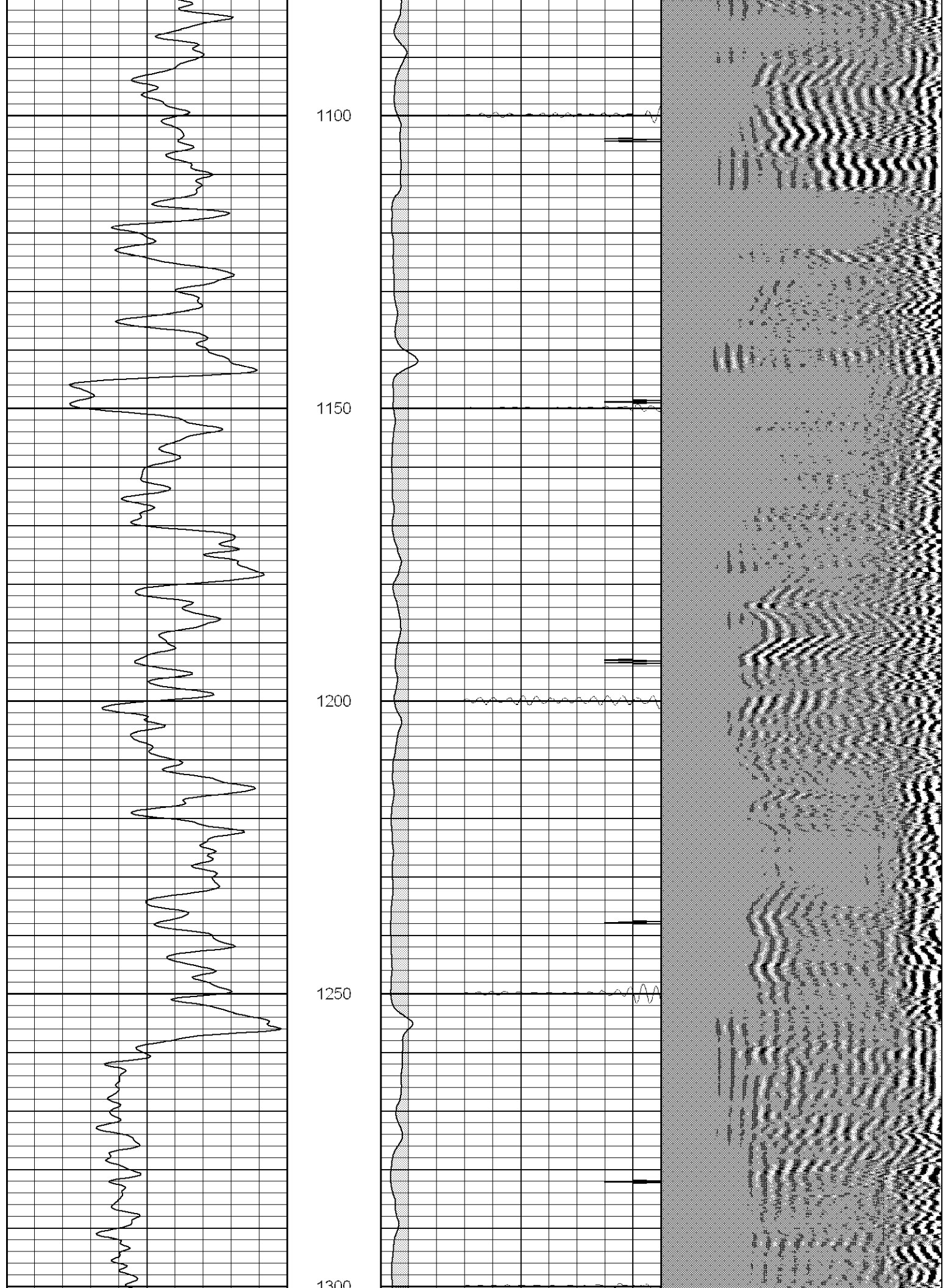
950

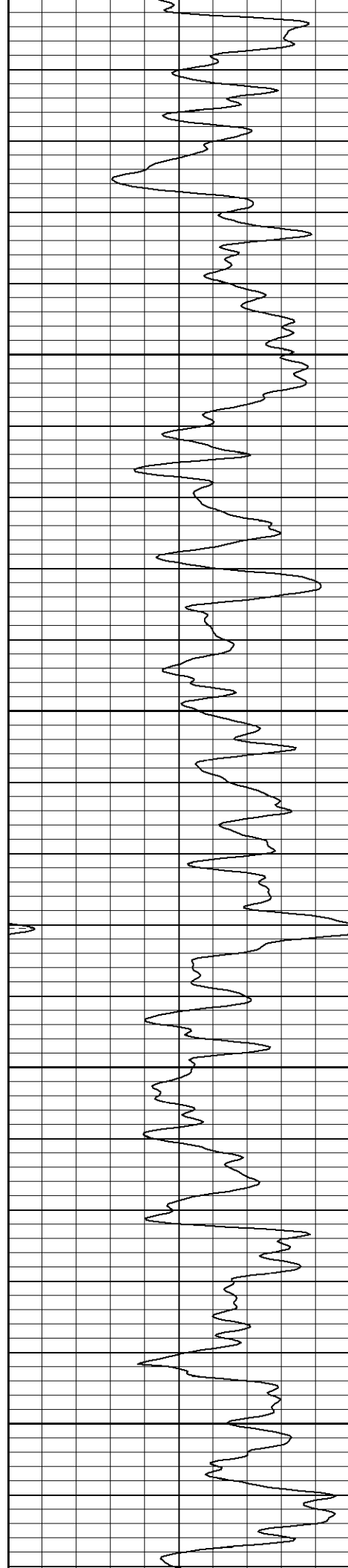
1000

1050

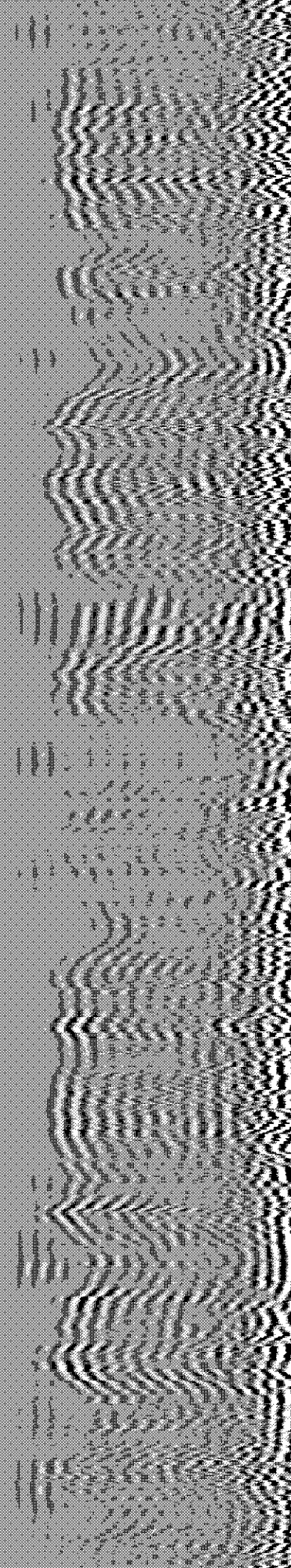
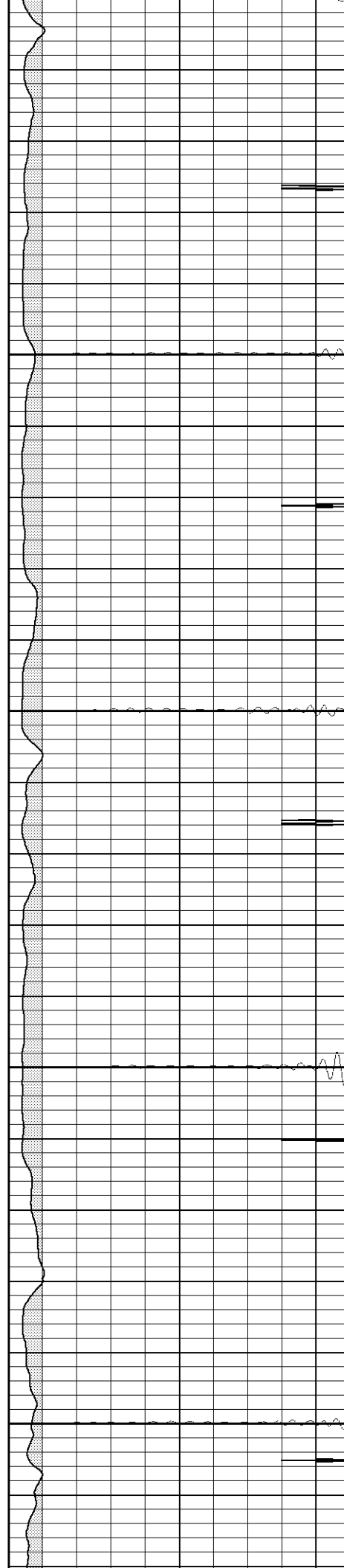




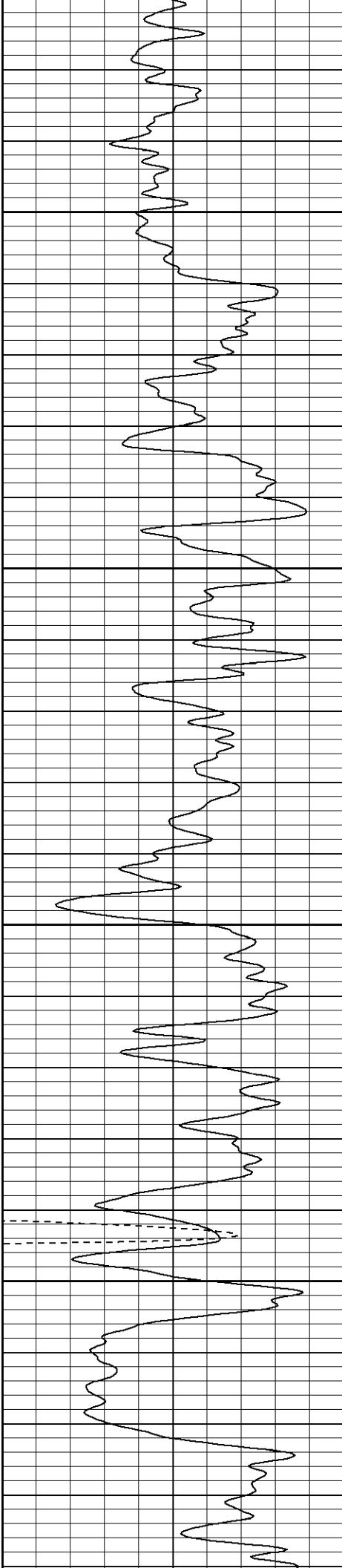




1500  
1350  
1400  
1450  
1500





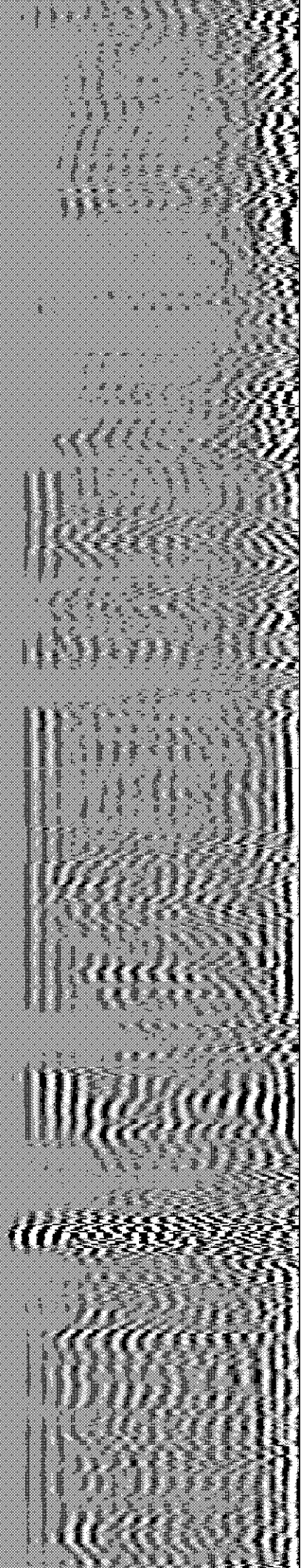
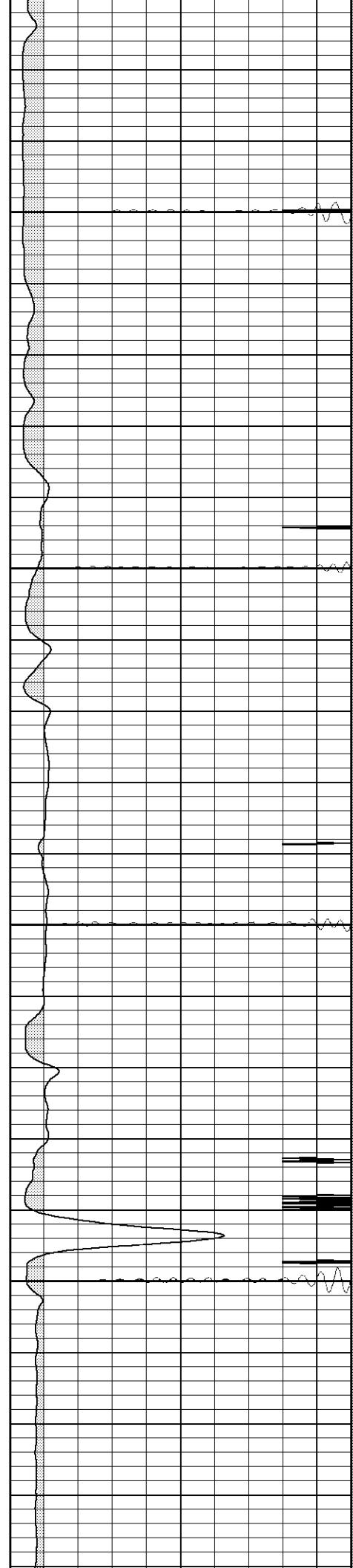


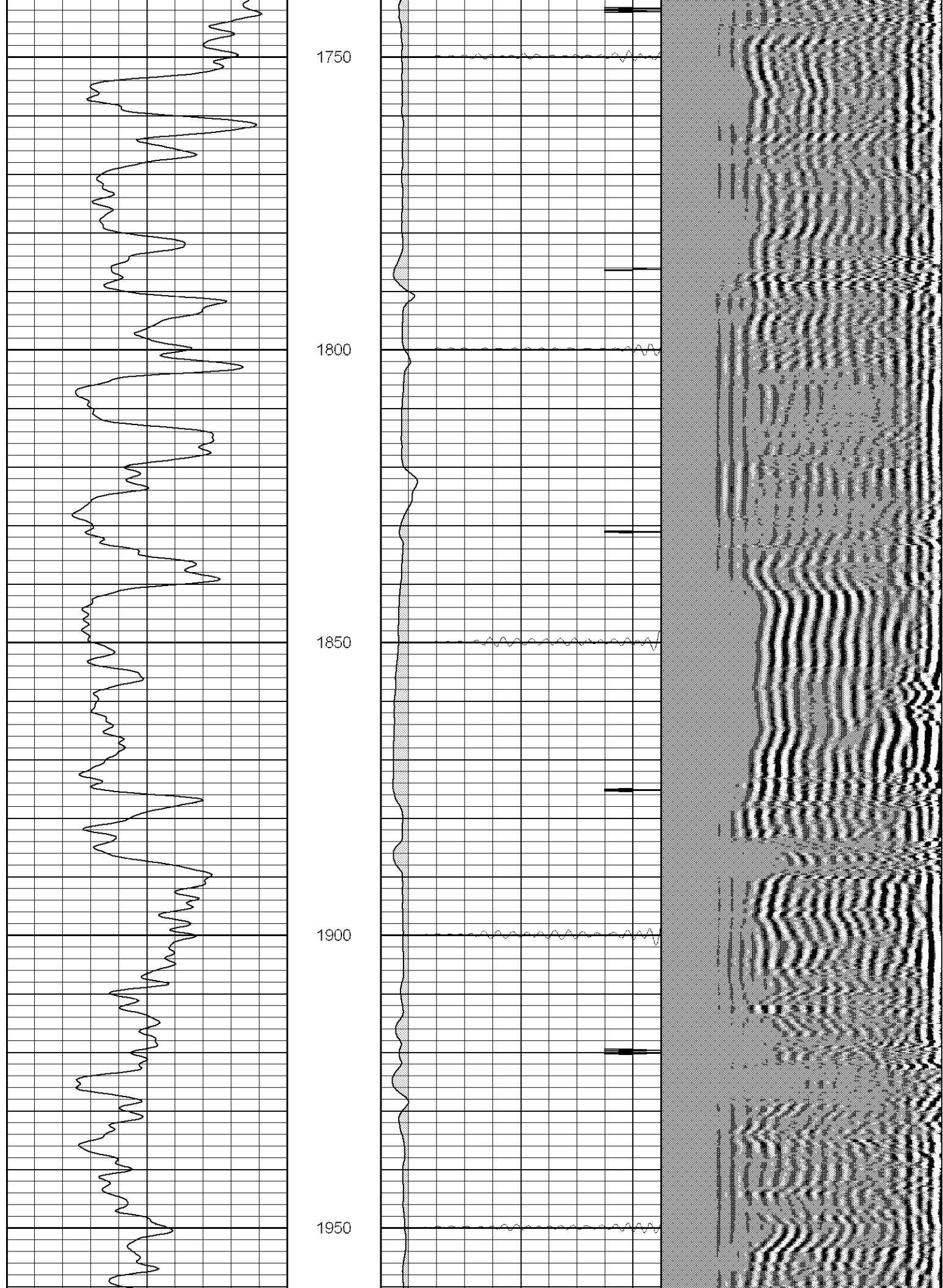
1550

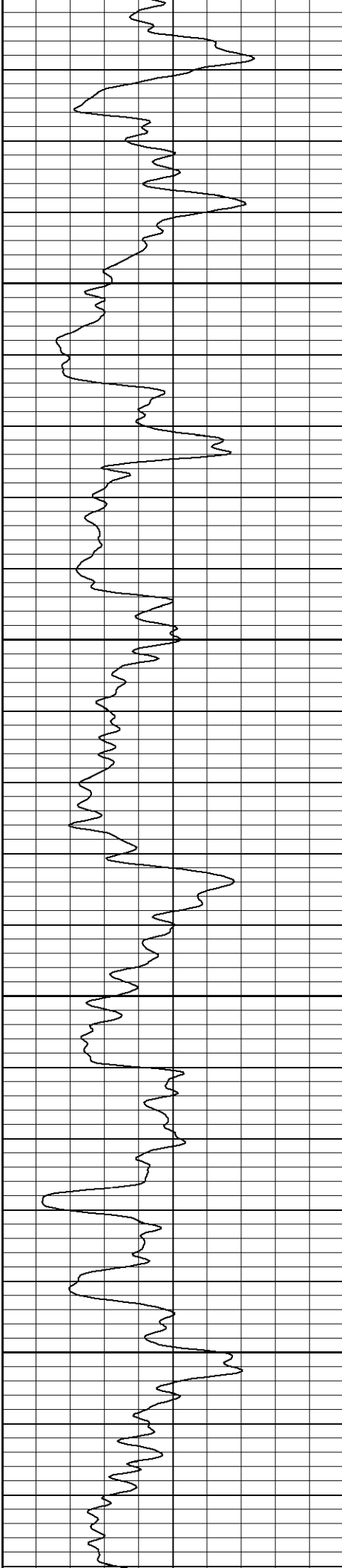
1600

1650

1700





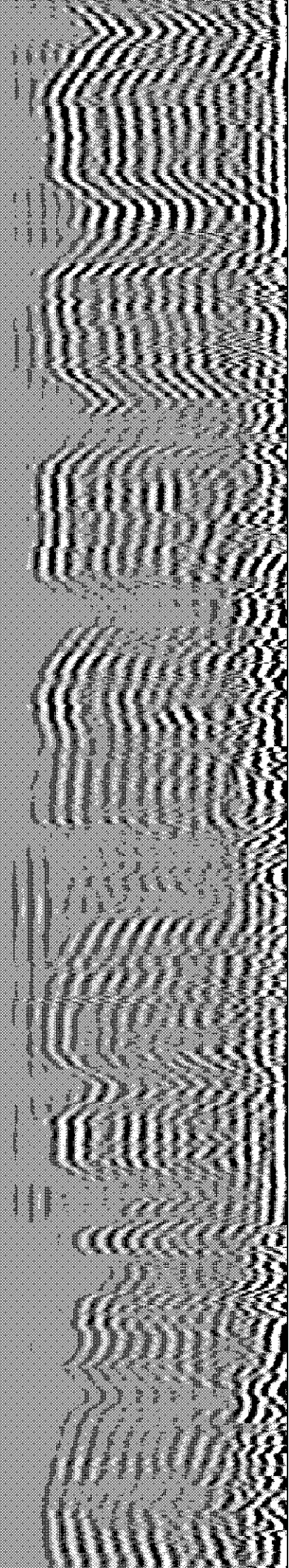


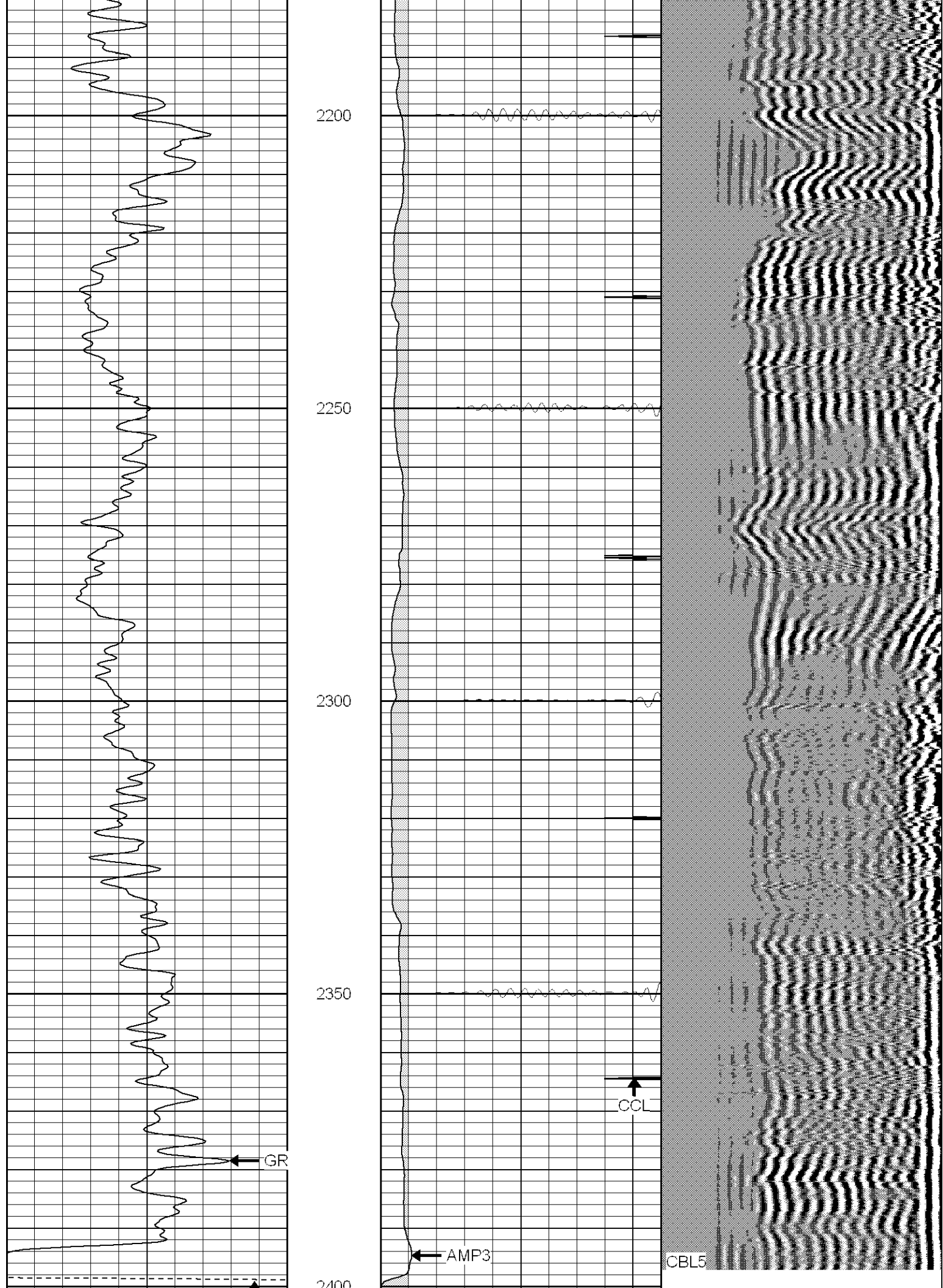
2000

2050

2100

2150





2400								
TT3								
0	GR (GAPI)	200	0	AMP3 (mV)	100	200	Variable Density	1200
400	TT3 (usec)	200	18	CCL	-2			
			200	CBL5	1200			



**SUPERIOR**

WELL SERVICES

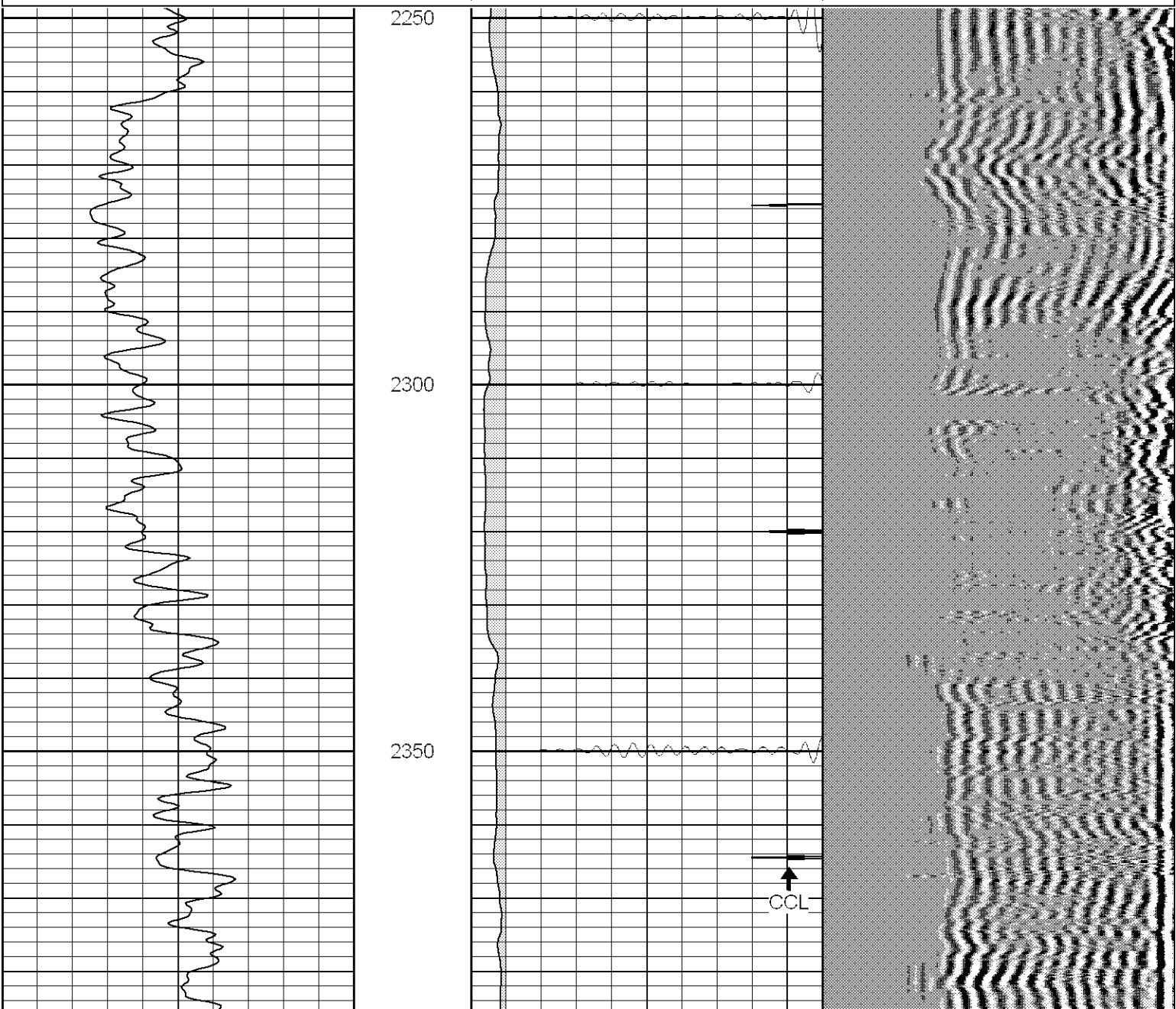
**SUPERIOR**

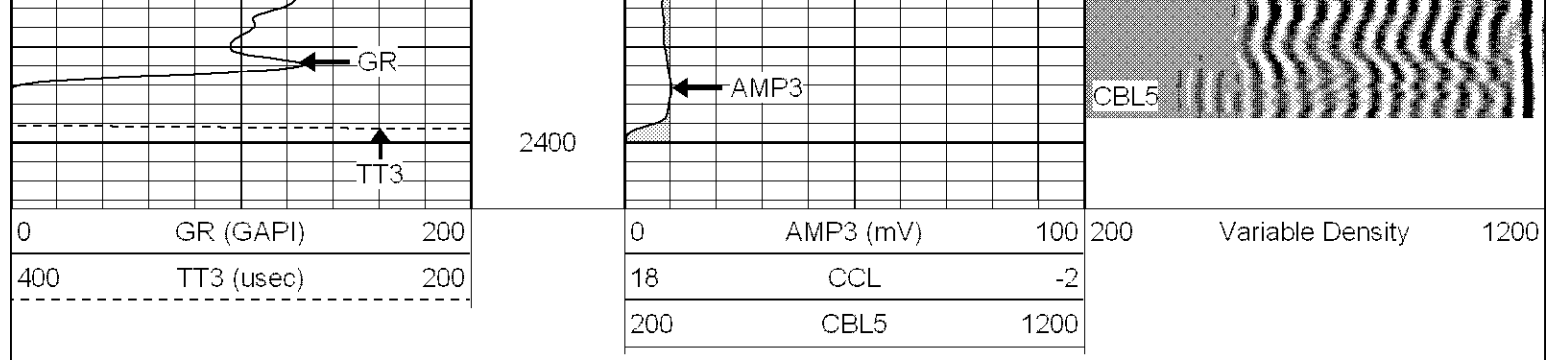
Black Lick, Pa.  
Mercer, Pa.  
Wooster, Oh.  
Cleveland, Ok.  
Trinidad, Co.

# Repeat Section (0PSI)

Database File: ac30053473007b.db  
Dataset Pathname: pass1  
Presentation Format: cblrt  
Dataset Creation: Mon Jul 30 13:59:45 2007 by Log Open-Cased 070508  
Charted by: Depth in Feet scaled 1:240

0			0			200		
GR (GAPI)			AMP3 (mV)			Variable Density		
200			100			1200		
400			18					
TT3 (usec)			CCL					
			-2					
			200					
			CBL5					
			1200					





### Calibration Report

Database File: ac30053473007b.db  
 Dataset Pathname: pass1  
 Dataset Creation: Mon Jul 30 13:59:45 2007 by Log Open-Cased 070508

### Cement Bond Log Calibration Report

Serial Number: Titan6  
 Tool Model: T6  
 Performed: Wed Jul 25 10:45:02 2007

Depth: 734.977 ft  
 Casing Diameter: 5.5 in

3' Spacing 5' Spacing

Signal Zero: 0 mV  
 Calibrated Amplitude: 85 mV  
 Reading at Signal Zero: 0.0194092 V  
 Reading in Free Pipe: 0.75 V

Gain: 116.344  
 Offset: 0.5

42.9451  
 -0.890144

### Gamma Ray Calibration Report

Serial Number: Titan6  
 Tool Model: T6  
 Performed: Tue Jul 24 11:46:21 2007

Calibrator Value: 1.0 GAPI

Background Reading: 0.0 cps  
 Calibrator Reading: 1.0 cps

Sensitivity: 1.2000 GAPI/cps

Sensor	Offset (ft)	Schematic	Description	Len (ft)	OD (in)	Wt (lb)
GR	13.64		CHD-None (0)	0.75	1.50	5.00
			GR-T6 (Titan6)	2.52	2.25	25.00
WVF5	9.49					
WVF3	8.49		CBL-T6 (Titan6)	7.23	2.44	110.00
			Titan 6			
			CENT-X (1)	3.00	1.69	25.00
CCL	0.83		CCL-T5 (Titan5)	2.15	2.75	15.00



