

BRAN-DEX

GAMMA RAY-C.C.L.
CEMENT BOND-V.D.L.

WIRELINE SERVICES

Company ENCANA ENERGY RESOURCES INC.				Company ENCANA ENERGY RESOURCES INC.			
Well BARCLAY-CRISMAN#4-6-20				Well BARCLAY-CRISMAN#4-6-20			
Field WATTENBERG				Field WATTENBERG			
County WELD				County WELD			
State COLORADO				State COLORADO			
Location:				API # : 05-123-22351-00			
SHL:700FSL&2213FWL				Other Services			
BHL:1314FSL&2213FWL				Elevation			
NW/NNW				K.B. 4939			
SEC 20 TWP 3N RGE 65W				D.F. 4938			
Permanent Datum				G.L. 4927			
Log Measured From				K.B.			
Drilling Measured From				G.L. 4927			
Date OCT -26-2004							
Run Number ONE							
Depth Driller 8080							
Depth Logger 8080							
Bottom Logged Interval 8077							
Top Log Interval 6560							
Open Hole Size							
Type Fluid WATER							
Density / Viscosity							
Max. Recorded Temp. 237							
Estimated Cement Top 6710							
Time Well Ready							
Time Logger on Bottom							
Equipment Number #12							
Location							
Recorded By STERLING GARDNER							
Witnessed By CECIL CLARK							
Borehole Record				Tubing Record			
Run Number Bit From To Size Weight From To							

<<< Fold Here >>>

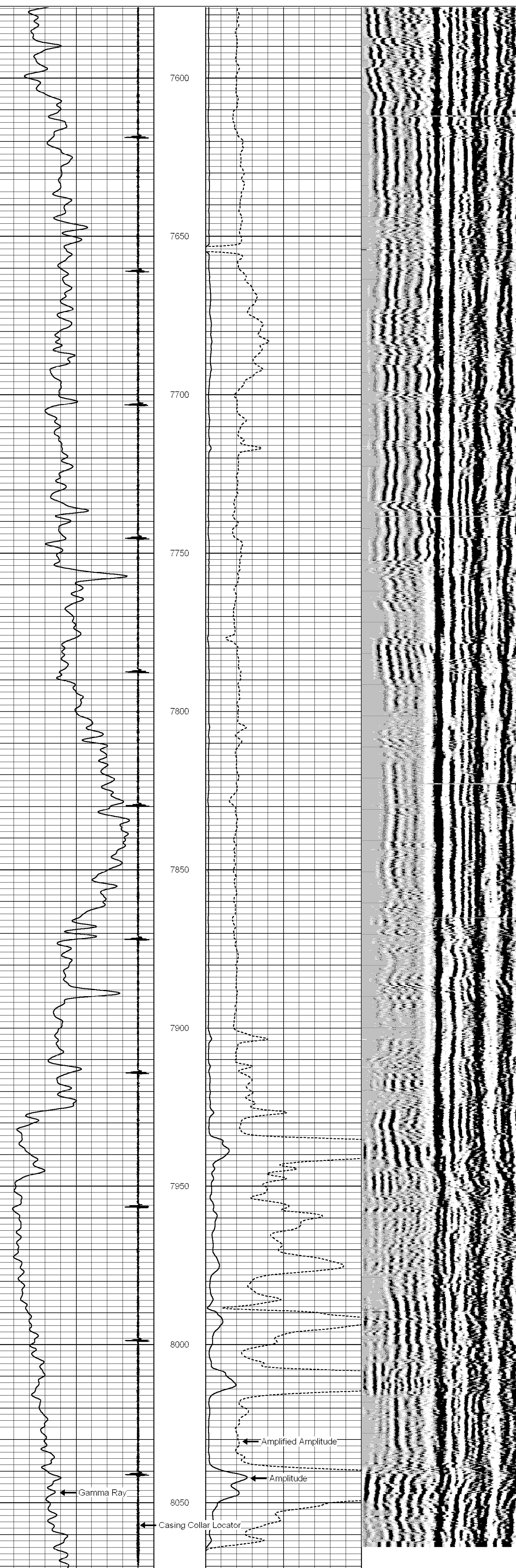
All interpretations are opinions based on inferences from electrical or other measurements and we cannot and do not guarantee the accuracy or correctness of any interpretation, and we shall not, except in the case of gross or willful negligence on our part, be liable or responsible for any loss, costs, damages, or expenses incurred or sustained by anyone resulting from any interpretation made by any of our officers, agents or employees. These interpretations are also subject to our general terms and conditions set out in our current Price Schedule.

Comments

CORRECTED 6' UPHOLE TO CORRELATE.

Database File: crisman.db
Dataset Pathname: pass1
Presentation Format: cbl35
Dataset Creation: Tue Oct 26 11:19:47 2004 by Log Warrior 7.0 Standar
Charted by: Depth in Feet scaled 1:240

9	Collar Locator	-1	0	Amplified Amplitude (mV)	10	300	Variable Density	1200
0	Gamma Ray	250	0	Amplitude (mV)	100			



9	Collar Locator	-1	0	Amplified Amplitude (mV)	10	300	Variable Density	1200
0	Gamma Ray	250	0	Amplitude (mV)	100			