

**Patterson**

DUAL  
INDUCTION  
LOG

Company XTO Energy, Inc.		Company XTO Energy, Inc.	
Well Hill Ranch 35-08		Well Hill Ranch 35-08	
Field Purgatoire River		Field Purgatoire River	
County Las Animas		County Las Animas	
State CO		State CO	
Location: API # : 05 071 08795 00		Other Services CDL NEUTRON	
SEC 35 TWP 34S RGE 67W		Elevation	
Permanent Datum		Ground Level	
Log Measured From		Ground Level	
Drilling Measured From		Ground Level	
2613' FNL & 985' FEL		K.B. ----- D.F. ----- G.L. 7873'	
Date 9-07-06			
Run Number One			
Depth Driller 2485'			
Depth Logger 2485'			
Bottom Logged Interval 2483'			
Top Log Interval		Surface Casing	
Casing Driller 8 5/8" @ 320'			
Casing Logger 320'			
Bit Size 7 7/8"			
Type Fluid in Hole Water			
Density / Viscosity			
pH / Fluid Loss			
Source of Sample			
Rm @ Meas. Temp			
Rmf @ Meas. Temp			
Rmc @ Meas. Temp			
Source of Rmf / Rmc			
Rm @ BHT			
Time Circulation Stopped			
Time Logger on Bottom			
Maximum Recorded Temperature			
Equipment Number			
Location			
Recorded By			
Witnessed By			

<<< Fold Here >>>

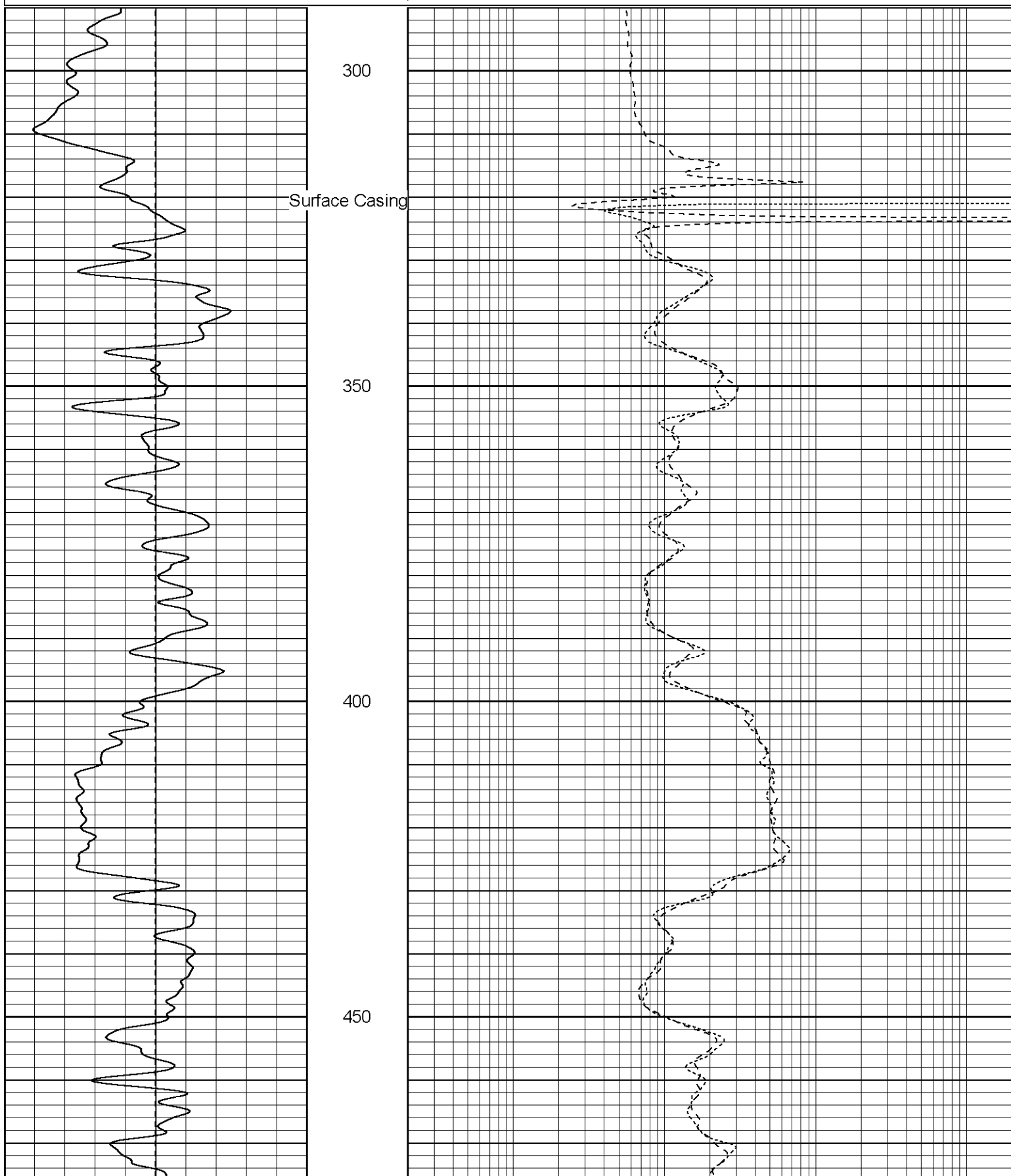
All interpretations are opinions based on inferences from electrical or other measurements and we cannot and do not guarantee the accuracy or correctness of any interpretation, and we shall not, except in the case of gross or willful negligence on our part, be liable or responsible for any loss, costs, damages, or expenses incurred or sustained by anyone resulting from any interpretation made by any of our officers, agents or employees. These interpretations are also subject to our general terms and conditions set out in our current Price Schedule.

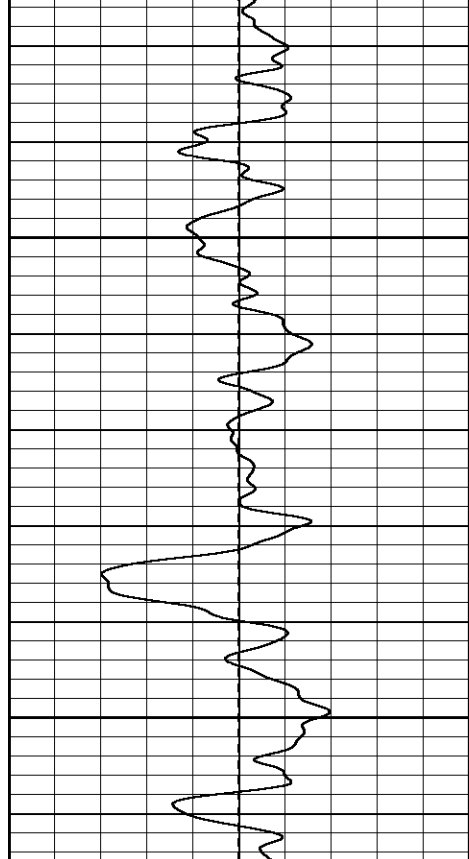
Comments
Well Directions: Lorencito up XTO hill fourth right to location.

Database File: xtohr3508.db  
Dataset Pathname: pass2.1  
Presentation Format: dil  
Dataset Creation: Thu Sep 07 05:28:18 2006 by Calc Warrior 7.0 STD Ope  
Charted by: Depth in Feet scaled 1:240

0	GR (GAPI)	200
-100	SP (mV)	100

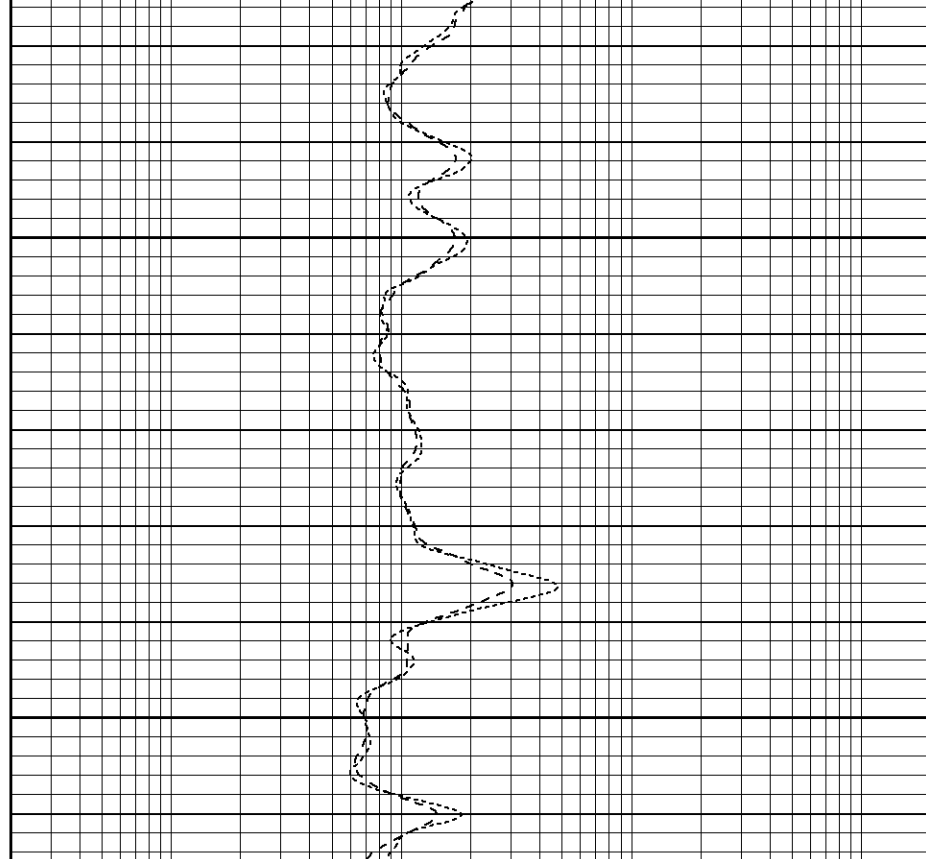
0.2	RILM (Ohm-m)	2000
0.2	RILD (Ohm-m)	2000
0.2	RLL3 (Ohm-m)	2000

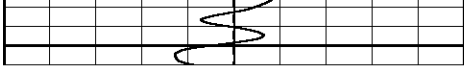




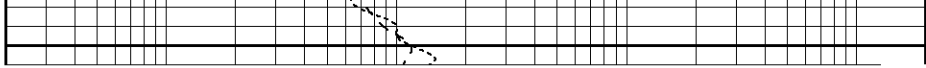
500

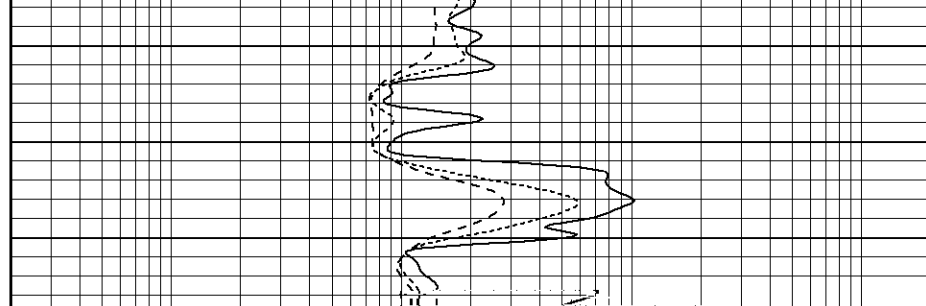
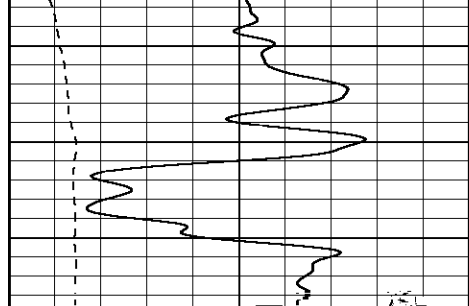
550

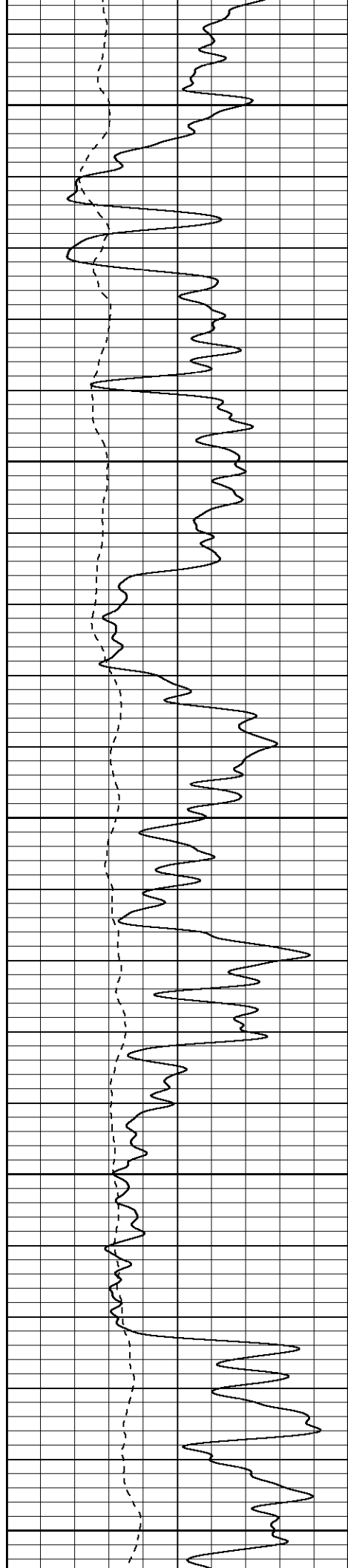




700







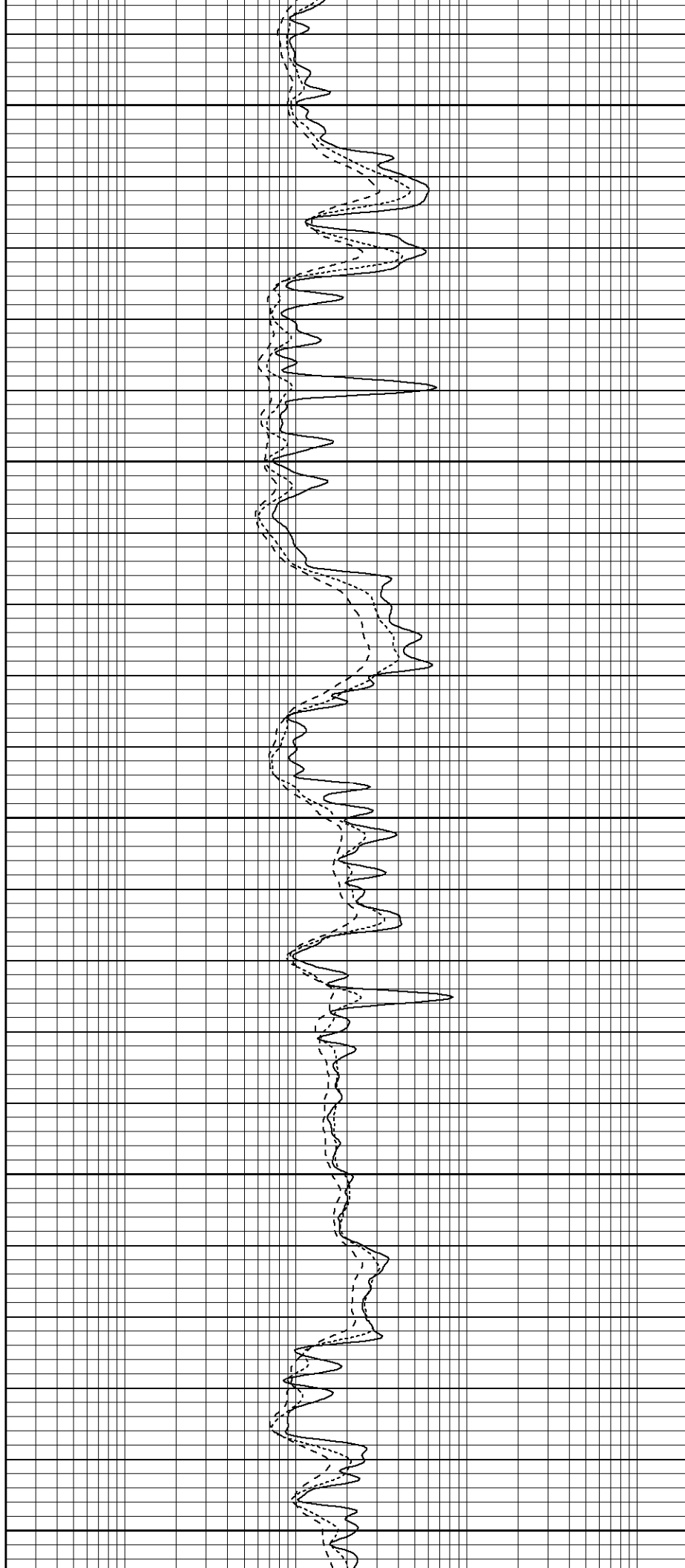
1150

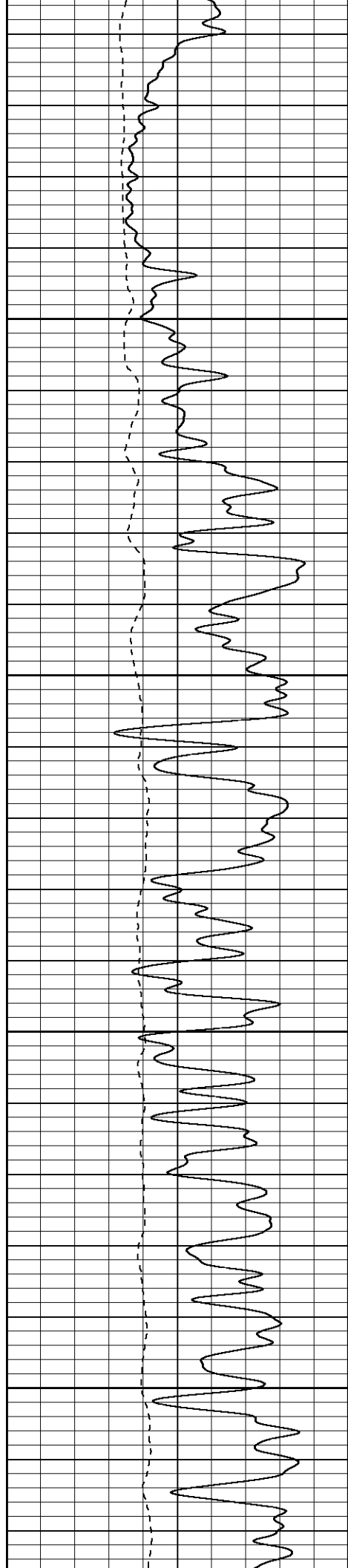
1200

1250

1300

1350



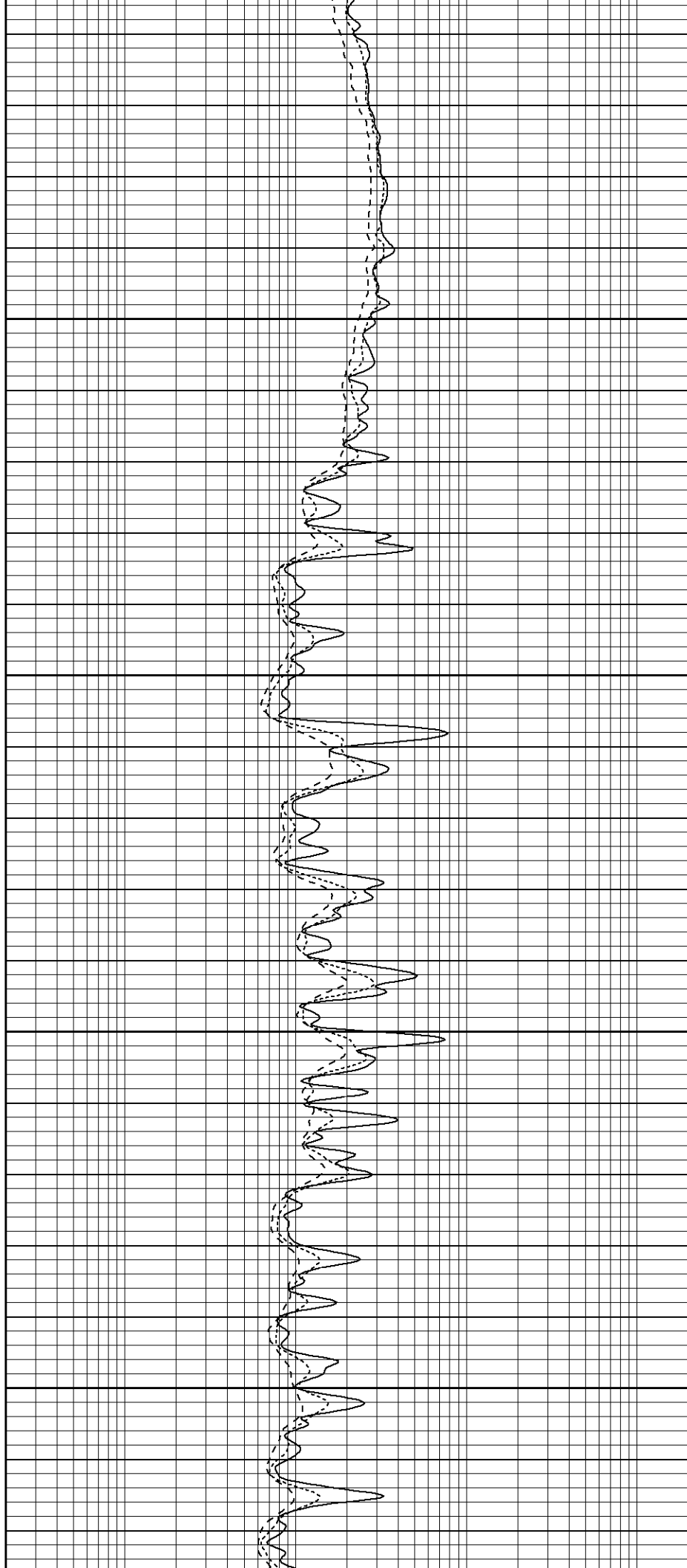


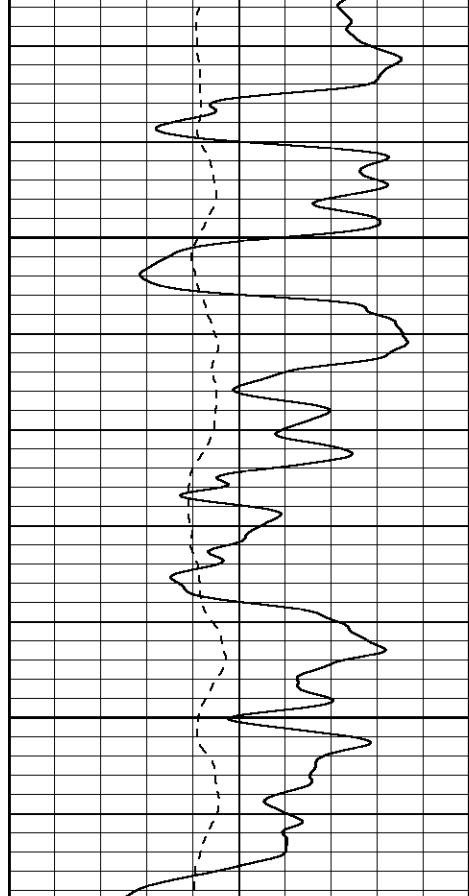
1400

1450

1500

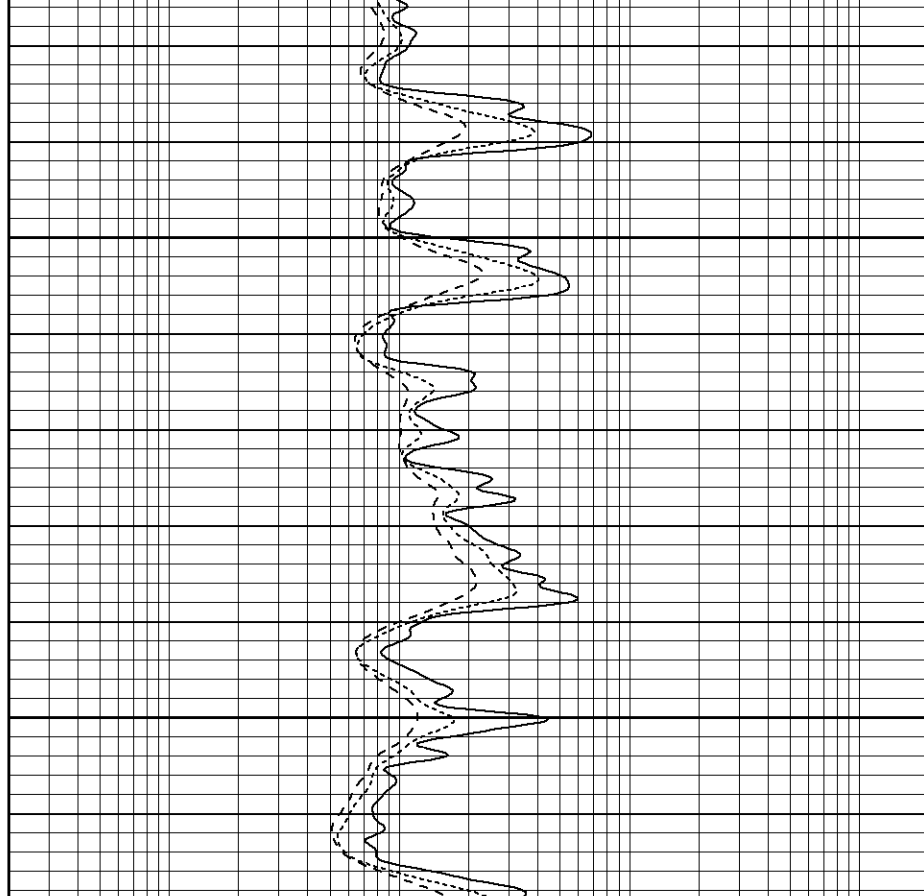
1550



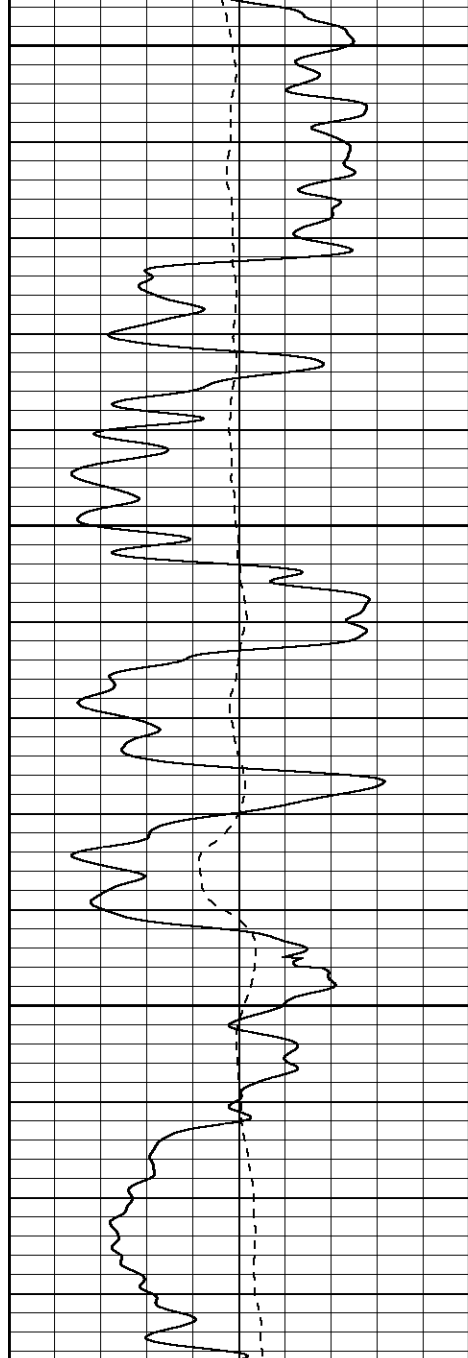


1600

1650



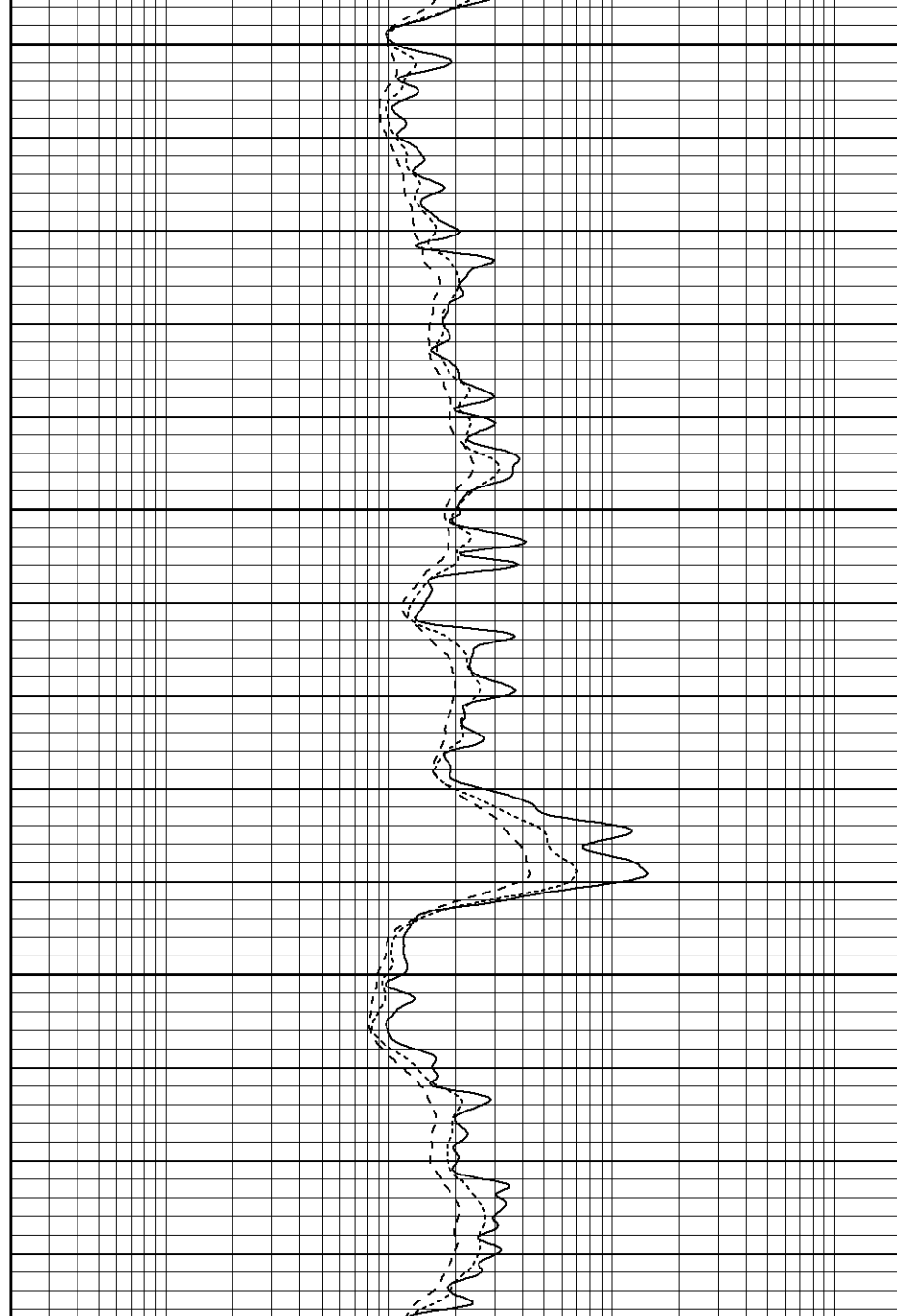


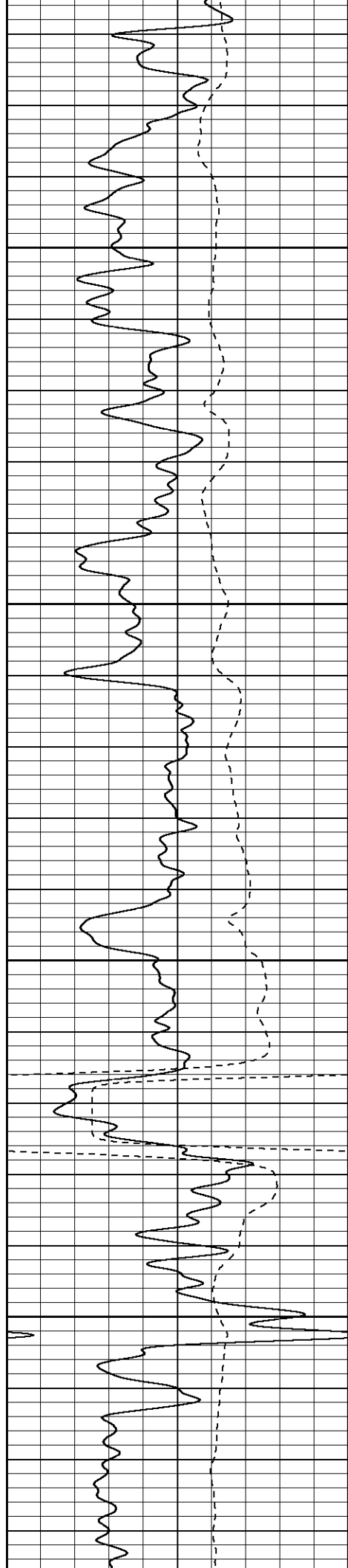


1800

1850

1900



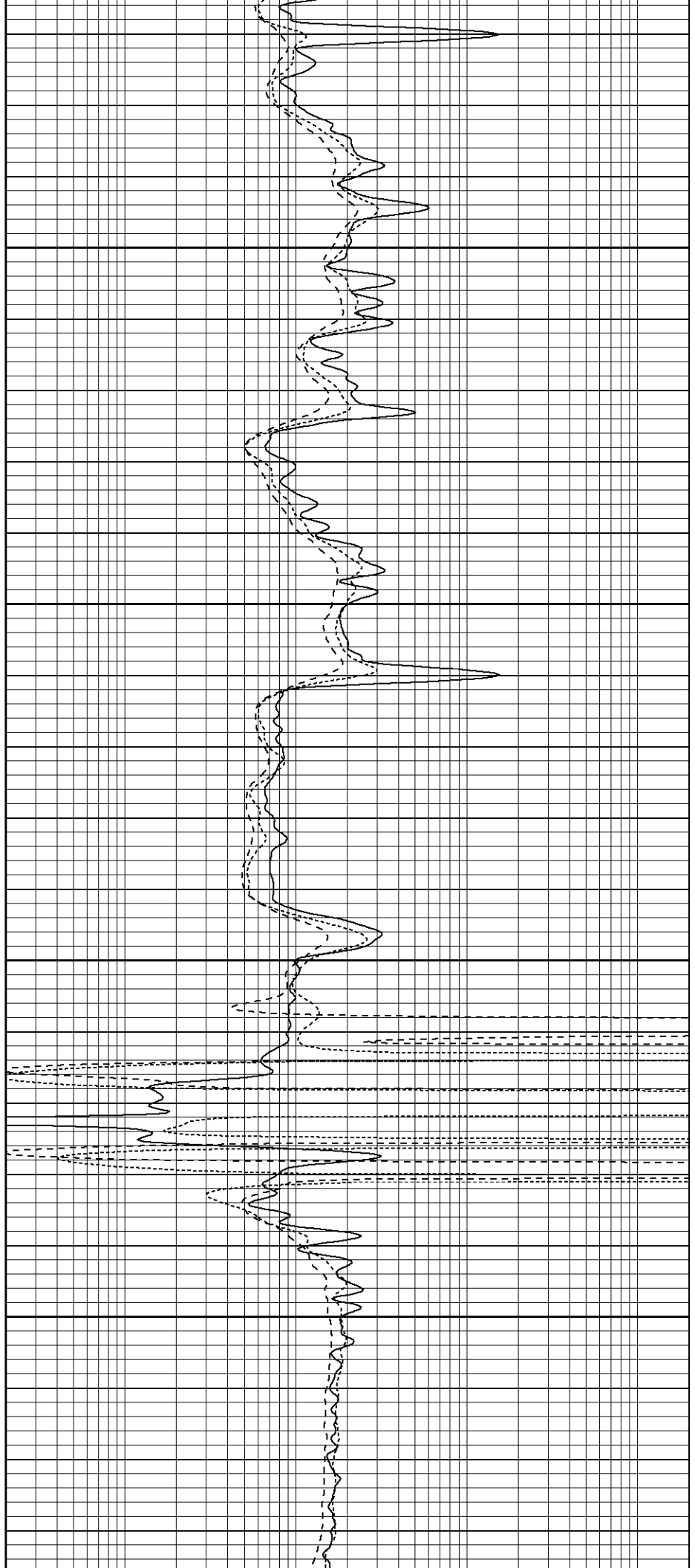


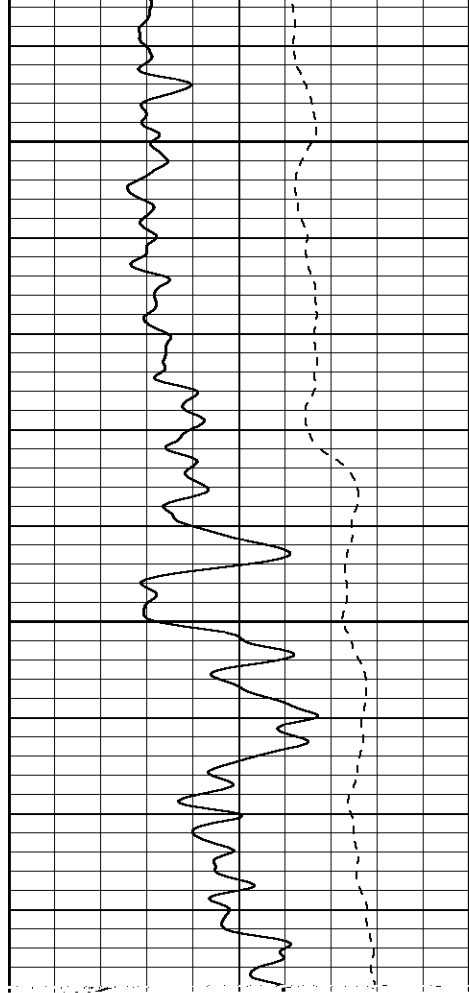
2050

2100

2150

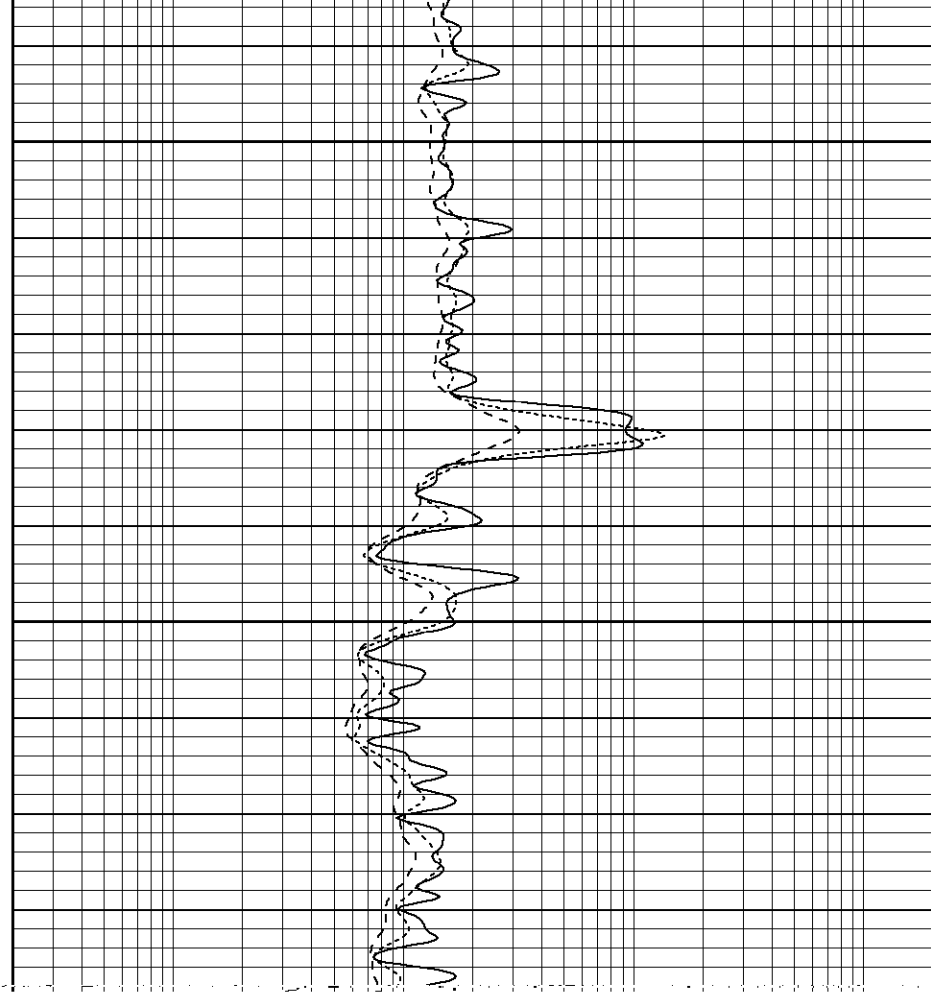
2200

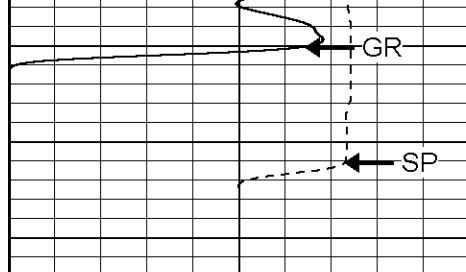




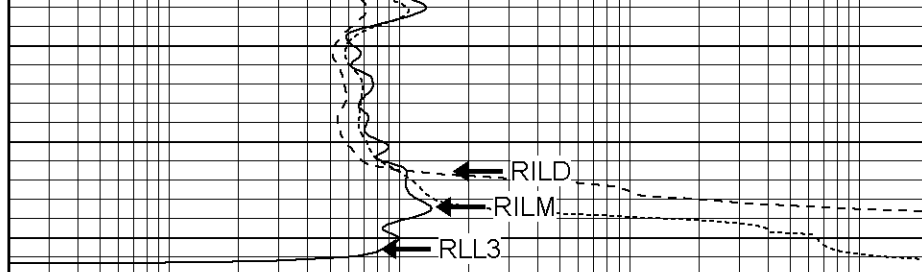
2250

2300





0	GR (GAPI)	200
-100	SP (mV)	100



0.2	RILM (Ohm-m)	2000
0.2	RILD (Ohm-m)	2000
0.2	RLL3 (Ohm-m)	2000

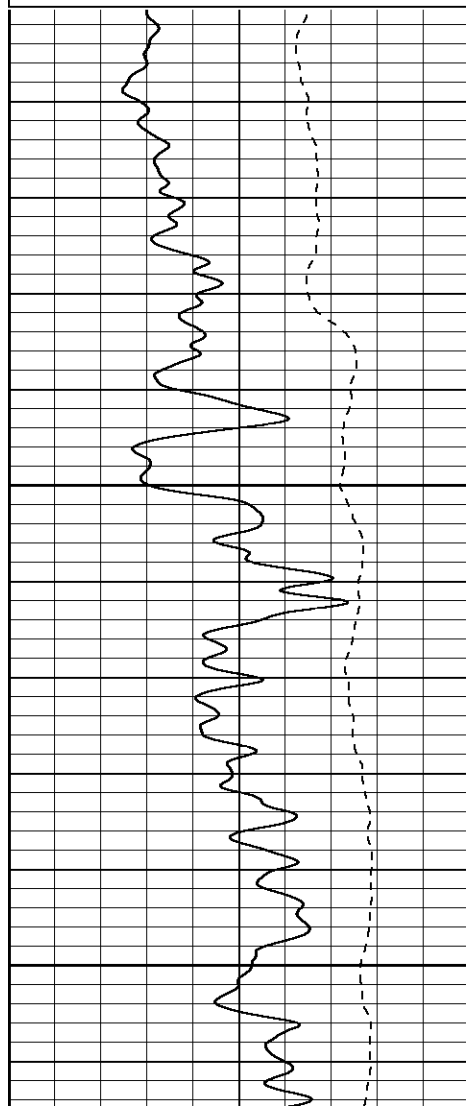
**Patterson**

## Repeat Section

Database File: xtohr3508.db  
 Dataset Pathname: pass1.1  
 Presentation Format: dil  
 Dataset Creation: Thu Sep 07 05:27:38 2006 by Calc Warrior 7.0 STD Ope  
 Charted by: Depth in Feet scaled 1:240

0	GR (GAPI)	200
-100	SP (mV)	100

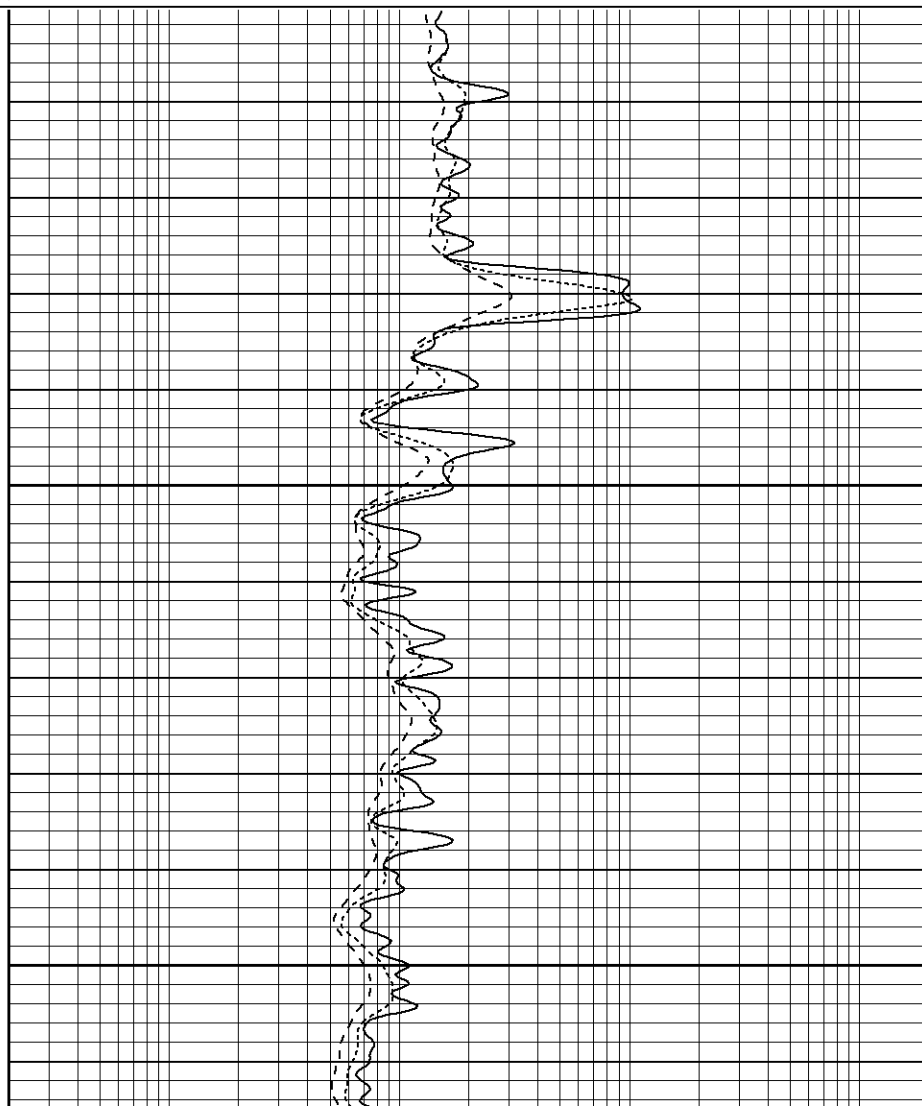
0.2	RILM (Ohm-m)	2000
0.2	RILD (Ohm-m)	2000
0.2	RLL3 (Ohm-m)	2000

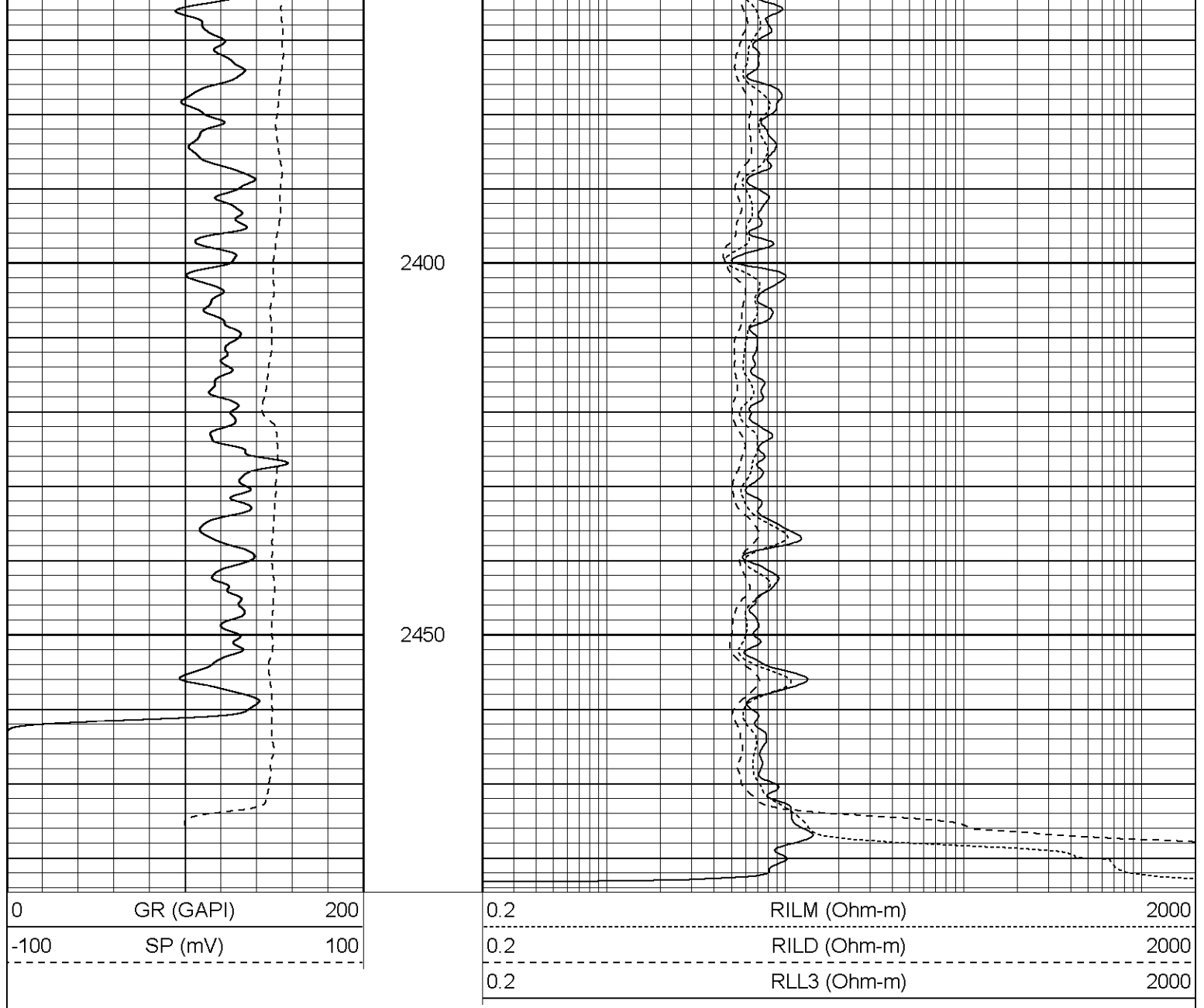


2200

2300

2350





### Dual Induction Calibration Report

Serial-Model: 5375-G  
 Surface Cal Performed: Mon Aug 14 08:21:41 2006  
 Downhole Cal Performed: Wed Aug 16 20:35:44 2006

#### Surface Calibration


Loop:	Readings			References			Results	
	Air	Loop		Air	Loop		m	b
Deep	0.012	0.633	V	0.000	500.000	mmho-m	804.288	-9.342
Medium	0.016	0.752	V	0.000	550.000	mmho-m	747.433	-11.697
Internal:	Zero	Cal		Zero	Cal		m	b
Deep	0.012	0.636	V	0.000	500.000	mmho-m	800.610	-9.578
Medium	0.016	0.752	V	0.000	550.000	mmho-m	747.389	-12.066

#### Downhole Calibration

Readings References Results

Internal:	Zero	Cal		Zero	Cal		m	b
Deep	1.512	503.799	mmho-m	0.280	500.000	mmho-m	0.995	-1.224
Medium	0.922	551.464	mmho-m	0.370	550.000	mmho-m	0.998	-0.550
Shallow	2.522	0.024	V	500.000	2.000	Ohm-m	145.000	-2.750

Gamma Ray Calibration Report			
Serial Number:	2001		
Tool Model:	OH		
Performed:	Wed Aug 30 14:48:29 2006		
Calibrator Value:	1.0	GAPI	
Background Reading:	0.0	cps	
Calibrator Reading:	1.0	cps	
Sensitivity:	0.1800	GAPI/cps	

Sensor	Offset (ft)	Schematic	Description	Len (ft)	OD (in)	Wt (lb)
CHD	25.08		None	0.75	1.50	5.00
GR	22.83		GR-OH (2001) SIE	3.50	3.25	40.00
CILD SP	10.60 10.60		DIL-G (5375) Gearhart	20.83	4.00	345.00
CILM	6.89					
RLL3	1.70					
Dataset: /field/well/run1/_plots/_jobs_/dil Total Length: 25.08 ft Total Weight: 390.00 lb O.D. 4.00 in						