

EOG RESOURCES, INC.

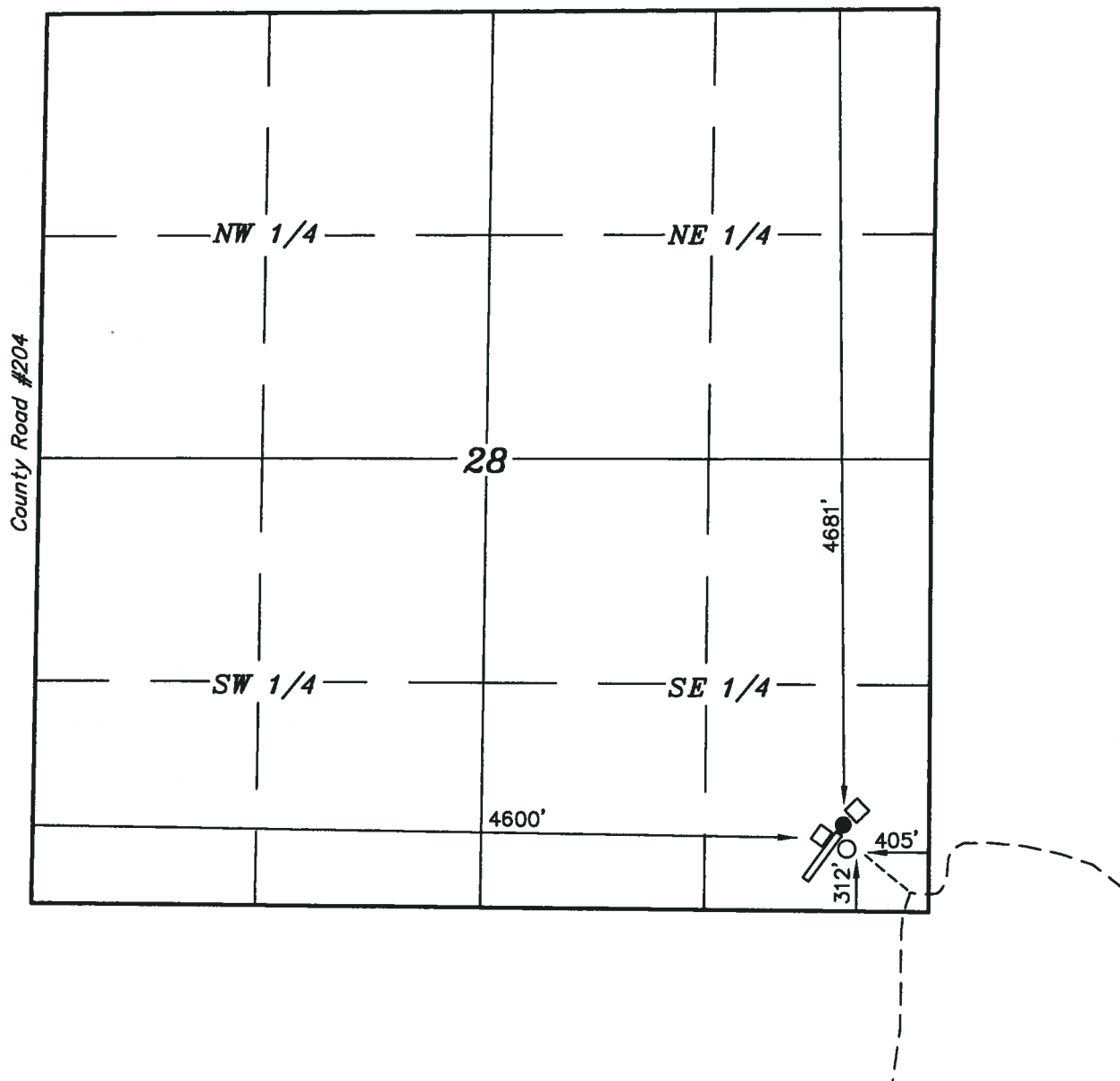
PLOT PLAN FOR TANK BATTERY

FOX CREEK #05-28H
SECTION 28, T12N, R63W, 6th P.M.
SE 1/4 SE 1/4



SCALE: 1" = 1000'
DATE: 01-13-10
DRAWN BY: D.R.B.

Separator ● Well Head □ Meter Building
 Access ◇ ECD ○ Production Tanks



ACCESS: PROCEED WESTERLY ON COUNTY ROAD 136.5 NEAR THE SOUTH 1/4 CORNER OF SECTION 27, T12N, R63W, 6th P.M. AND PROCEED WESTERLY APPROXIMATELY 0.5 MILES THEN PROCEED NORTHWEST APPROXIMATELY 0.1 MILES TO THE FOX CREEK #05-28H PAD.

UINTAH ENGINEERING & LAND SURVEYING
85 So. 200 East * Vernal, Utah 84078 * (435) 789-1017