

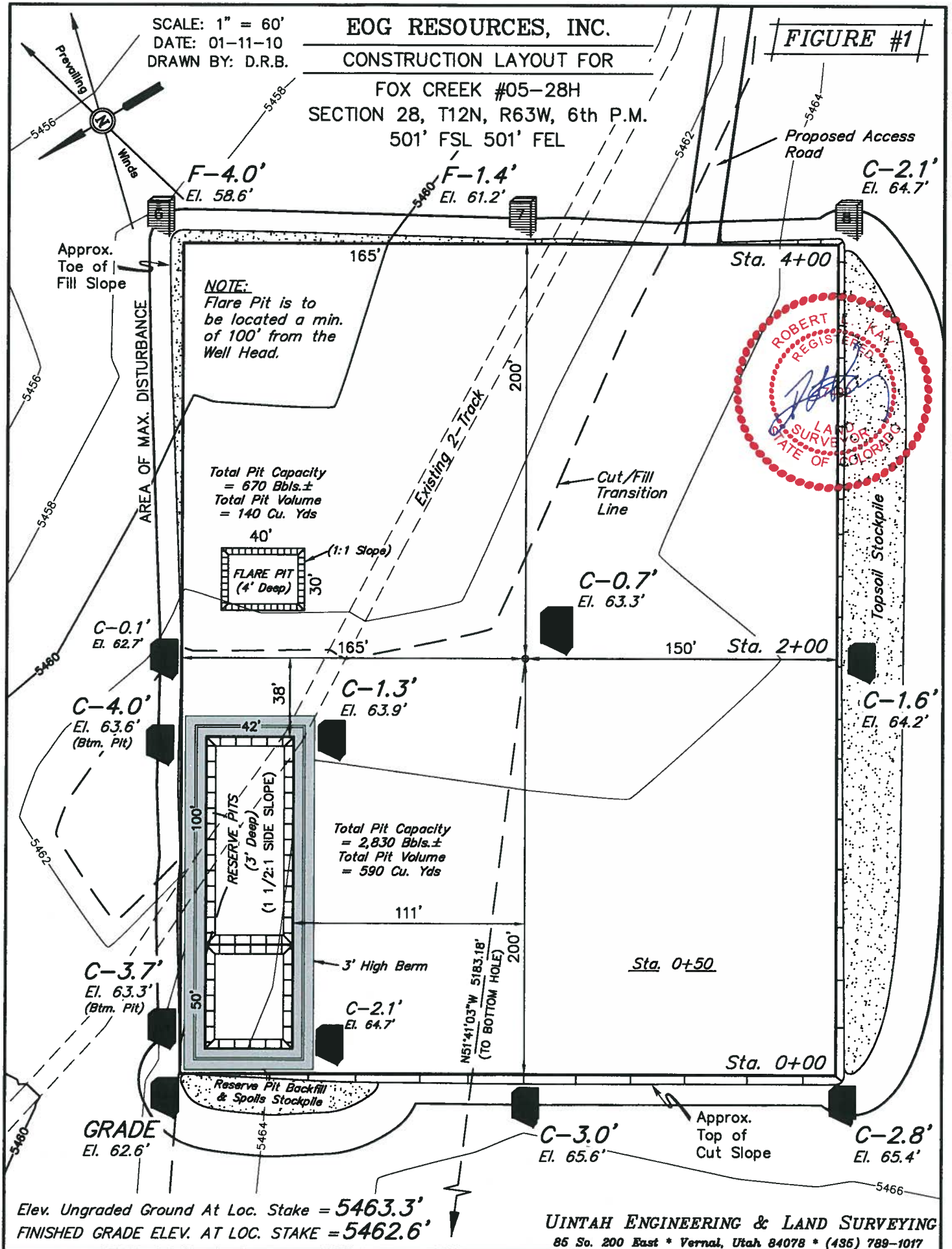
SCALE: 1" = 60'
DATE: 01-11-10
DRAWN BY: D.R.B.

EOG RESOURCES, INC.

CONSTRUCTION LAYOUT FOR

FOX CREEK #05-28H
SECTION 28, T12N, R63W, 6th P.M.
501' FSL 501' FEL

FIGURE #1



1" = 40'
X-Section
Scale
1" = 100'

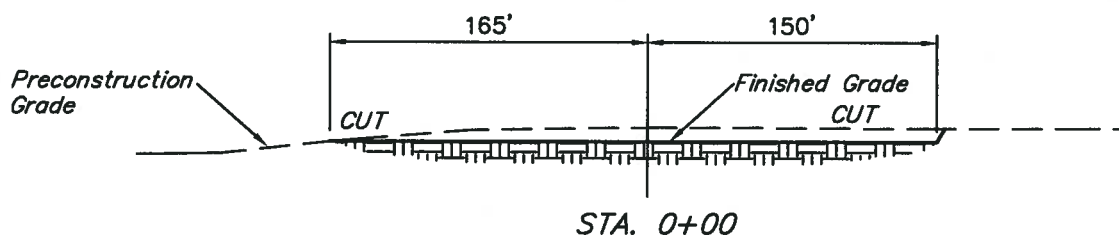
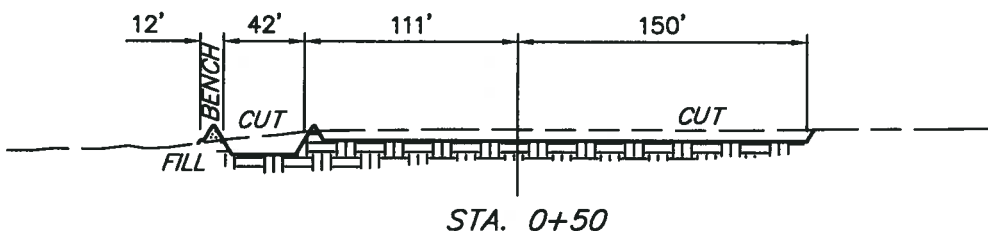
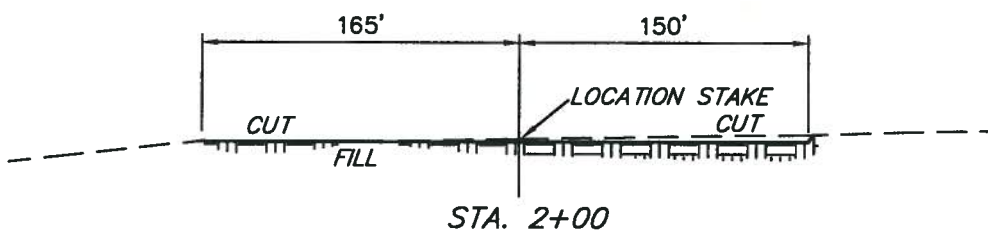
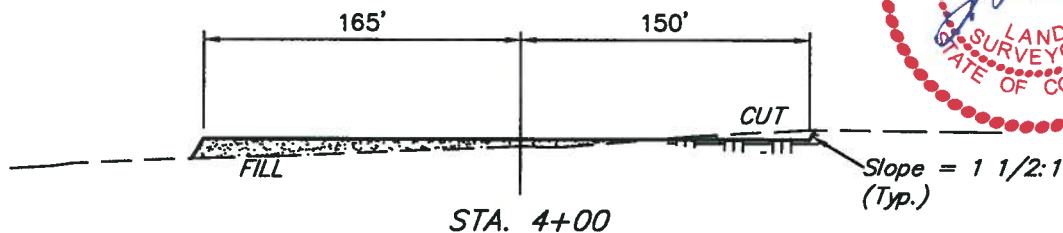
DATE: 01-11-10
DRAWN BY: D.R.B.

EOG RESOURCES, INC.

CONSTRUCTION LAYOUT CROSS SECTION FOR

FOX CREEK #05-28H
SECTION 28, T12N, R63W, 6th P.M.
501' FSL 501' FEL

FIGURE #2



NOTE:

Topsoil should not be Stripped Below Finished Grade on Substructure Area.

APPROXIMATE ACREAGES
WELL SITE DISTURBANCE = ± 3.752 ACRES
ACCESS ROAD DISTURBANCE = ± 0.221 ACRES
TOTAL = ± 3.973 ACRES

* NOTE:
FILL QUANTITY INCLUDES 5% FOR COMPACTION

APPROXIMATE YARDAGES

(6") Topsoil Stripping = 2,450 Cu. Yds.
Remaining Location = 3,870 Cu. Yds.
TOTAL CUT = 6,320 CU.YDS.
FILL = 3,570 CU.YDS.

EXCESS MATERIAL = 2,750 Cu. Yds.
Topsoil & Pit Backfill = 2,750 Cu. Yds.
(1/2 Pit Vol.)
EXCESS UNBALANCE = 0 Cu. Yds.
(After Interim Rehabilitation)

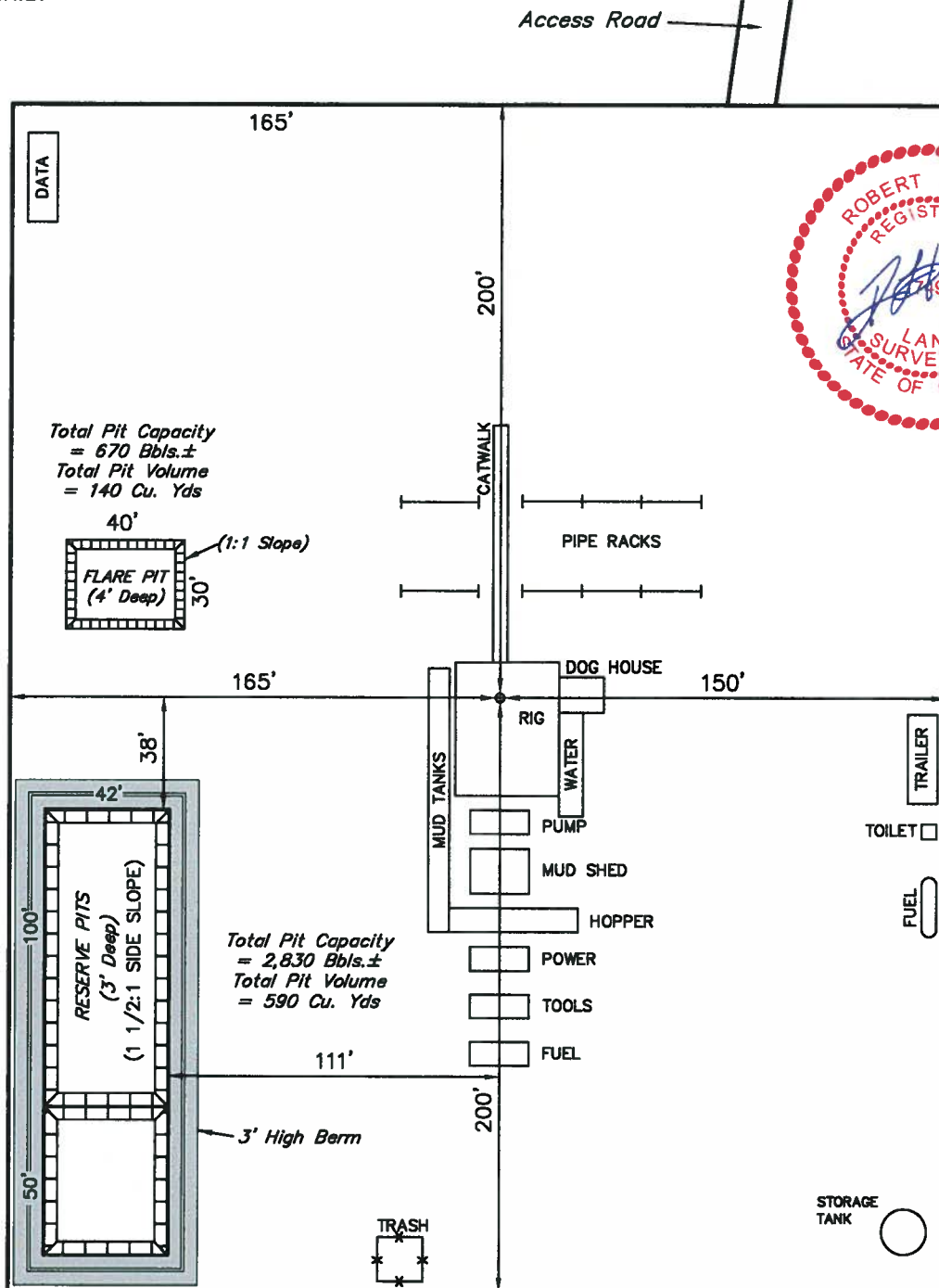
UINTAH ENGINEERING & LAND SURVEYING
85 So. 200 East * Vernal, Utah 84078 * (435) 789-1017



SCALE: 1" = 60'
DATE: 01-11-10
DRAWN BY: D.R.B.

EOG RESOURCES, INC.
TYPICAL RIG LAYOUT FOR
FOX CREEK #05-28H
SECTION 28, T12N, R63W, 6th P.M.
501' FSL 501' FEL

FIGURE #3





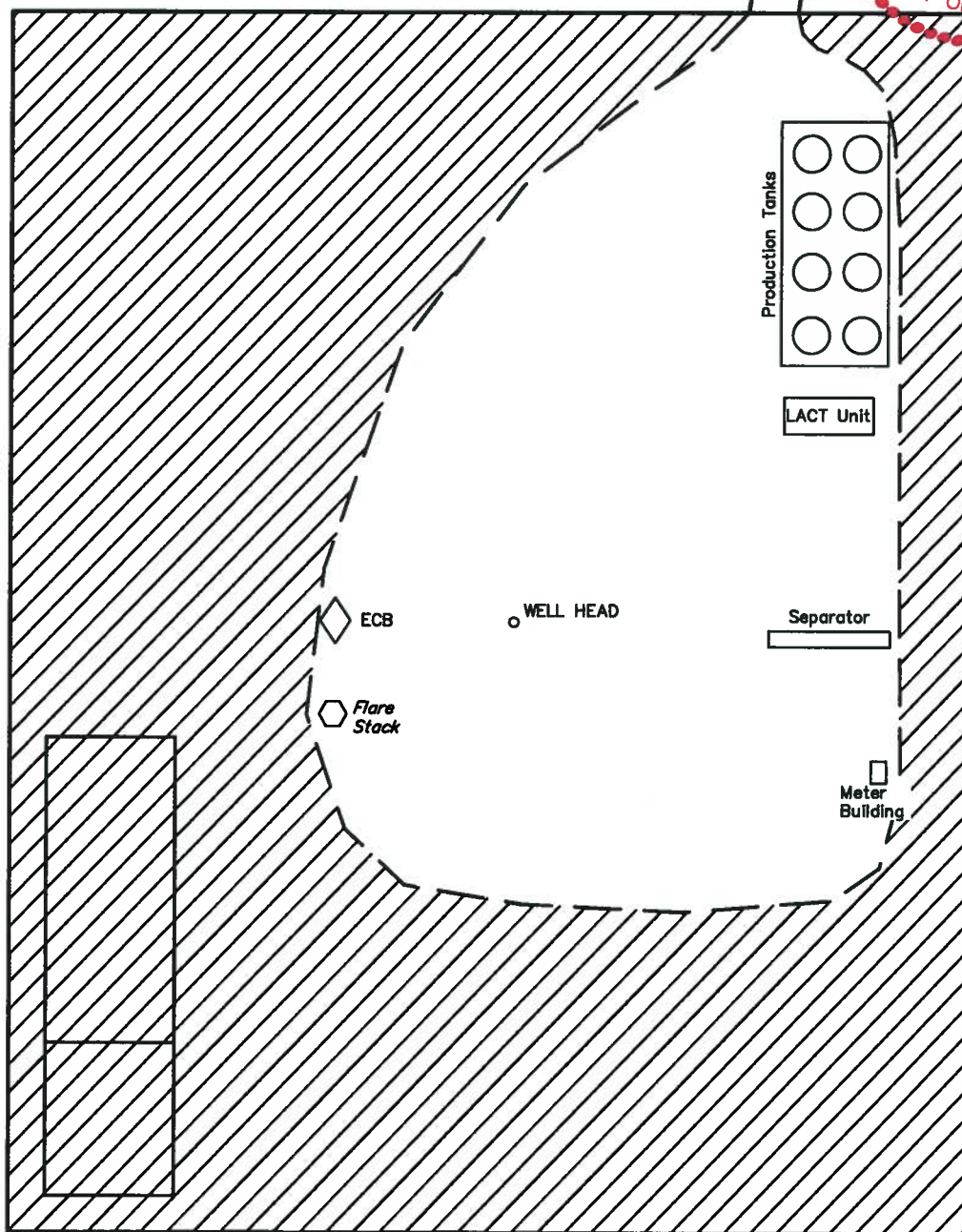
SCALE: 1" = 60'
DATE: 01-11-10
DRAWN BY: D.R.B.

EOG RESOURCES, INC.
RECLAMATION DIAGRAM FOR
FOX CREEK #05-28H
SECTION 28, T12N, R63W, 6th P.M.
501' FSL 501' FEL

FIGURE #4



Access Road



APPROXIMATE ACREAGES
UN-RECLAIMED AREA = ± 1.024 ACRES



RE-HABBED AREA

UINTAH ENGINEERING & LAND SURVEYING
85 So. 200 East * Vernal, Utah 84078 * (435) 789-1017