

EOG RESOURCES, INC.

FOX CREEK #05-28H

LOCATED IN WELD COUNTY, COLORADO

SECTION 28, T12N, R63W, 6th P.M.

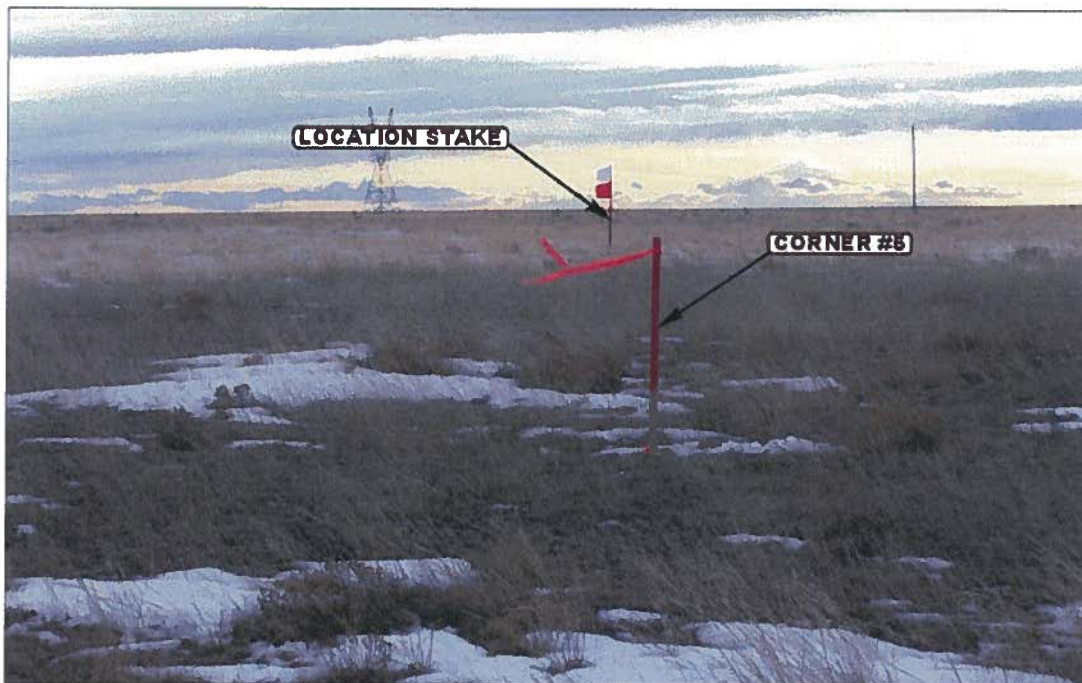


PHOTO: VIEW FROM CORNER #5 TO LOCATION STAKE

CAMERA ANGLE: SOUTHWESTERLY



PHOTO: VIEW FROM BEGINNING OF PROPOSED ACCESS

CAMERA ANGLE: NORTHWESTERLY



- Since 1964 -

**U
E
L
S**

Uintah Engineering & Land Surveying

85 South 200 East Vernal, Utah 84078
435-789-1017 FAX (435) 789-1813

LOCATION PHOTOS

01
MONTH

11
DAY

10
YEAR

PHOTO

P 1

TAKEN BY: G.S.

DRAWN BY: J.H.

REVISED: 00-00-00

EOG RESOURCES, INC.

FOX CREEK #05-28H

LOCATED IN WELD COUNTY, COLORADO

SECTION 28, T12N, R63W, 6th P.M.



PHOTO: VIEW OF LOCATION STAKE

CAMERA ANGLE: NORTHERLY

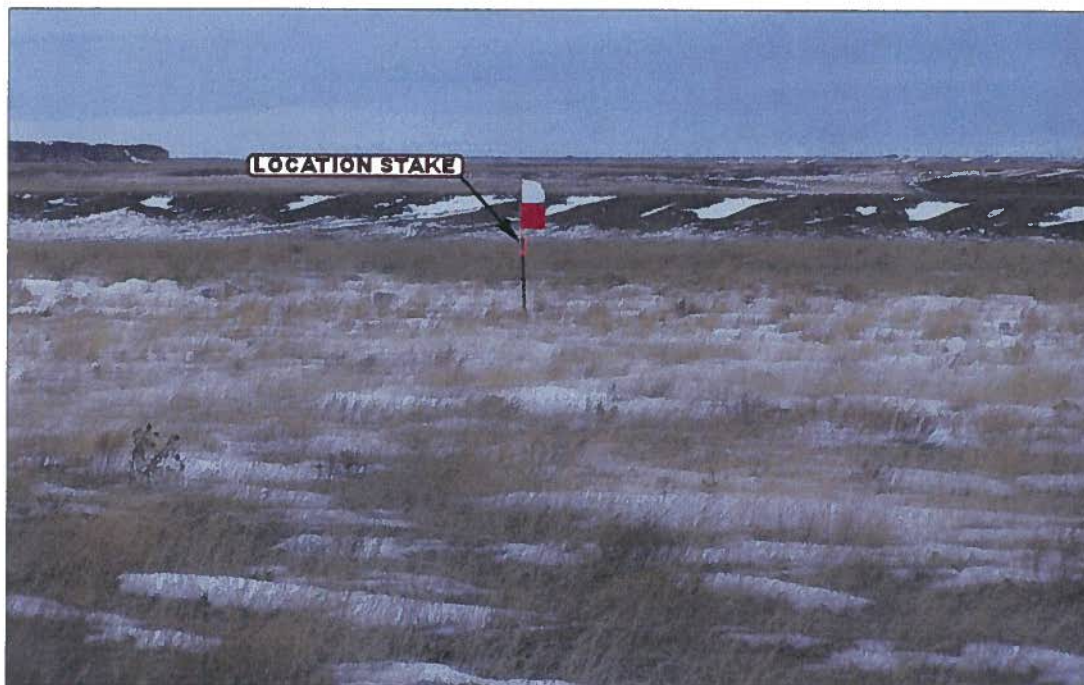


PHOTO: VIEW OF LOCATION STAKE

CAMERA ANGLE: EASTERLY



- Since 1964 -

UELS

Uintah Engineering & Land Surveying
85 South 200 East Vernal, Utah 84078
435-789-1017 FAX (435) 789-1813

LOCATION PHOTOS

01 11 10
MONTH DAY YEAR

TAKEN BY: G.S.

DRAWN BY: J.H.

REVISED: 00-00-00

PHOTO

P 2