

BLANCO

Geological Services LLC

Scale 1:240 (5"=100') Imperial

Well Name: Volvo 12-02

Location: SW/NW Sec. 2 T32S R66W

Licence Number: 05-071-08205-00

Spud Date: 12/10/04

Surface Coordinates: 1884' FNL 827' FWL
37.289185 -104.755997

Las Animas County

Region: Purgatoire River

Drilling Completed: 12/17/04

Bottom Hole Coordinates:

Ground Elevation (ft): 7198'

K.B. Elevation (ft): 7202'

Logged Interval (ft): 405' To: 1905'

Total Depth (ft): 1905'

Formation: Raton/Vermejo/Trinidad

Type of Drilling Fluid: Air

Printed by STRIP.LOG from WellSight Systems 1-800-447-1534 www.WellSight.com

OPERATOR

Company: Pioneer Natrual Resources, Inc.

Address: 1401 17th Street Suite 1200
Denver CO 80202

GEOLOGIST

Name: Kyle Welty

Company: BLANCO Geological Services LLC

Address: 806 Robinson
Trinidad CO 81020
(719) 846-3364

Rig

Pense #9

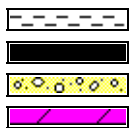
Comments

8 5/8" #24 Surface Casing set to 350 ft

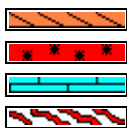
ROCK TYPES



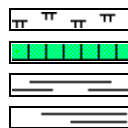
Anhy
Bent
Brec
Cht



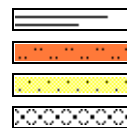
Clyst
Coal
Congl
Dol



Gyp
Igne
Lmst
Meta



Mrlst
Salt
Shale
Shcol



Shgy
Sltst
Ss
Till

ACCESSORIES

MINERAL

Anhy
 Arggrn
 Arg
 Bent
 Bit
 Brecfrag
 Calc
 Carb
 Chtdk
 Chtlt
 Dol
 Feldspar
 Ferrpel
 Ferr
 Glau

Gyp
 Hvymin
 Kaol
 Marl
 Minxl
 Nodule
 Phos
 Pyr
 Salt
 Sandy
 Silt
 Sil
 Sulphur
 Tuff

FOSSIL

Algae
 Amph
 Belm
 Bioclst
 Brach
 Bryozoa
 Cephal
 Coral
 Crin
 Echin
 Fish
 Foram
 Fossil
 Gastro
 Oolite

Ostra
 Pelec
 Pellet
 Pisolite
 Plant
 Strom

STRINGER

Anhy
 Arg
 Bent
 Coal
 Dol
 Gyp
 Ls
 Mrst

Sltstrg
 Ssstrg

TEXTURE

Boundst
 Chalky
 Cryxln
 Earthy
 Finexln
 Grainst
 Lithogr
 Microxln
 Mudst
 Packst
 Wackest

OTHER SYMBOLS

POROSITY TYPE

Earthy
 Fenest
 Fracture
 Inter
 Moldic
 Organic
 Pinpoint

Vuggy

SORTING

Well
 Moderate
 Poor

ROUNDING

Rounded
 Subrnd
 Subang
 Angular

Spotted
 Ques
 Dead

INTERVALS

Core
 Dst
 Srfcsg

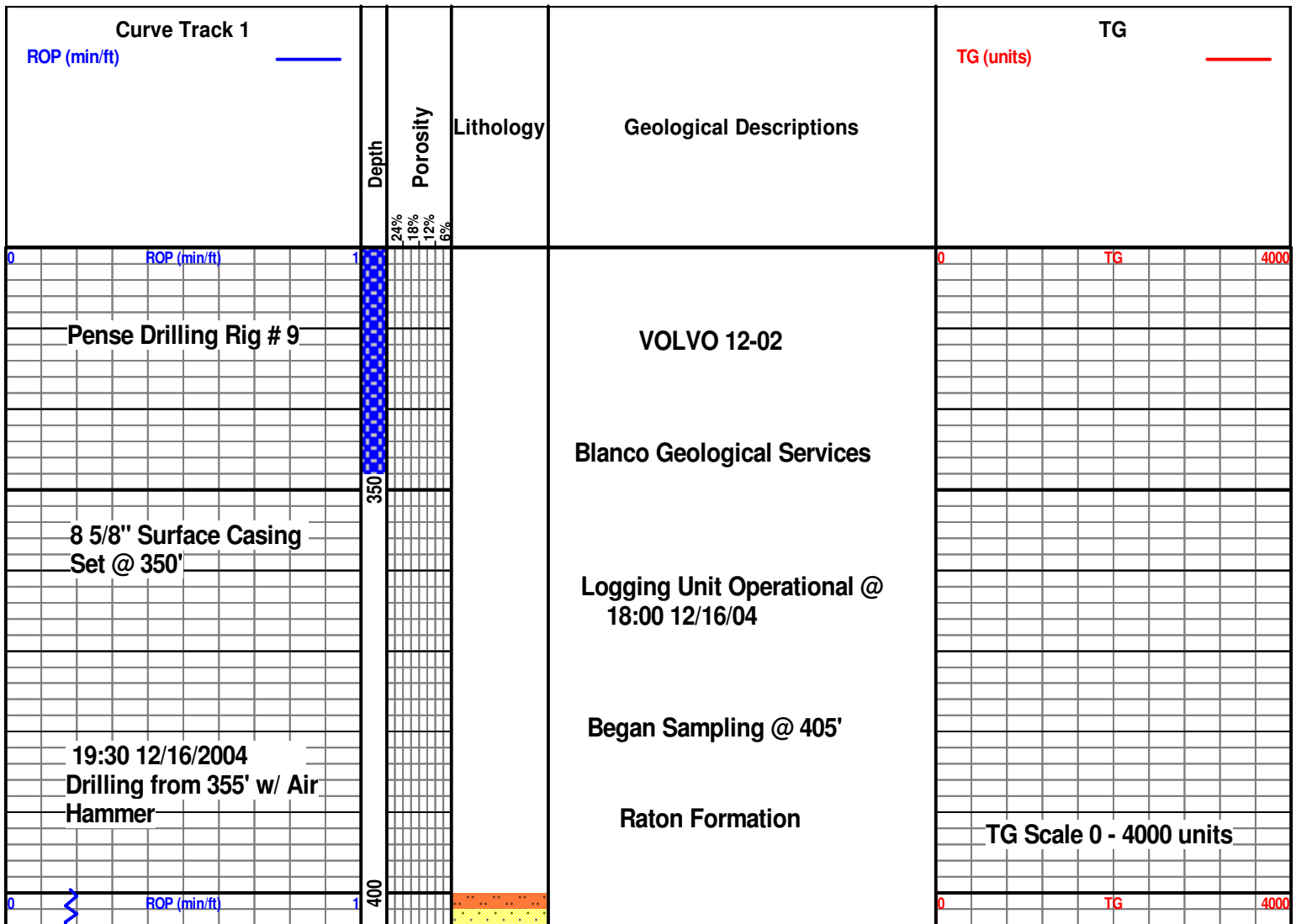
Cv-v
 Cv-c

EVENTS

Rft
 Sidewall
 Srfcsg

OIL SHOWS

Even



20:00 @ 427'

450

500

550

600

ROP (min/ft)

SILTSTONE grey tan, soft, sub platy, smooth, bright w/
SANDSTONE Interbedded

COAL black, vitreous, hard, well cleated, conchoidal fracture

SILTSTONE brown, soft, sub platy, smooth, bright w/
SANDSTONE Interbedded

COAL black, vitreous, hard, well cleated, conchoidal fracture

SANDSTONE grey, fg, sub angular-sub rounded, well
sorted, well consolidated, mod calcareous, ARGILLACEOUS
Matrix

COAL black, vitreous, hard, well cleated, conchoidal fracture

COAL black, vitreous, hard, well cleated, conchoidal
fracture, PYRITE

SANDSTONE grey tan , fg, sub angular-sub rounded, well
sorted, well consolidated, weakly calcareous w/ SHALE
Interbedded

SHALE grey tan, hard, sub platy - sub blocky, gritty,
pearly, sandy

COAL black, vitreous, hard, well cleated, conchoidal
fracture, PYRITE

COAL black, vitreous, hard, well cleated, conchoidal
fracture, PYRITE

TG

4000

