



SUPERIOR
Black Lick, Pa.
Mercer, Pa.
Wooster, Oh.
Cleveland, Ok.
Trinidad, Co.

DUAL INDUCTION LOG

Company	XTO Energy Inc.		
Well	Apache Canyon 05-09V		
Field	Purgatoire River		
County	Las Animas	State	Colorado
Location:	API # : 05 071 09127 00		Other Services CDL NEUTRON
SEC 5 TWP 34S RGE 67W		Elevation	
Permanent Datum	Ground Level	Elevation	7406'
Log Measured From	Ground Level		
Drilling Measured From	Ground Level	K.B. ----- D.F. ----- G.L. 7406'	
Date	7-09-07		
Run Number	One		
Depth Driller	2005'		
Depth Logger	1999'		
Bottom Logged Interval	1997'		
Top Log Interval	Surface Casing		
Casing Driller	8 5/8" @ 496'		
Casing Logger	496'		
Bit Size	7 7/8"		
Type Fluid in Hole	Water		
Density / Viscosity	///		
pH / Fluid Loss	///		
Source of Sample	///		
Rm @ Meas. Temp	///		
Rmf @ Meas. Temp	///		
Rmc @ Meas. Temp	///		
Source of Rmf / Rmc	///		
Rm @ BHT	///		
Time Circulation Stopped	12:30 P.M.		
Time Logger on Bottom	3:10 P.M.		
Maximum Recorded Temperature	100 DEG F		
Equipment Number	T697		
Location	Trinidad		
Recorded By	M. Norton		
Witnessed By	Mr. Joe Smith		

<<< Fold Here >>>

All interpretations are opinions based on inferences from electrical or other measurements and we cannot and do not guarantee the accuracy or correctness of any interpretation, and we shall not, except in the case of gross or willful negligence on our part, be liable or responsible for any loss, costs, damages, or expenses incurred or sustained by anyone resulting from any interpretation made by any of our officers, agents or employees. These interpretations are also subject to our general terms and conditions set out in our current Price Schedule.

Comments

Well Directions:

First Bosque entrance just before Weston, turn right on Alomsito canyon, stay on main road thru gate, at windmill stay right, first left to location.



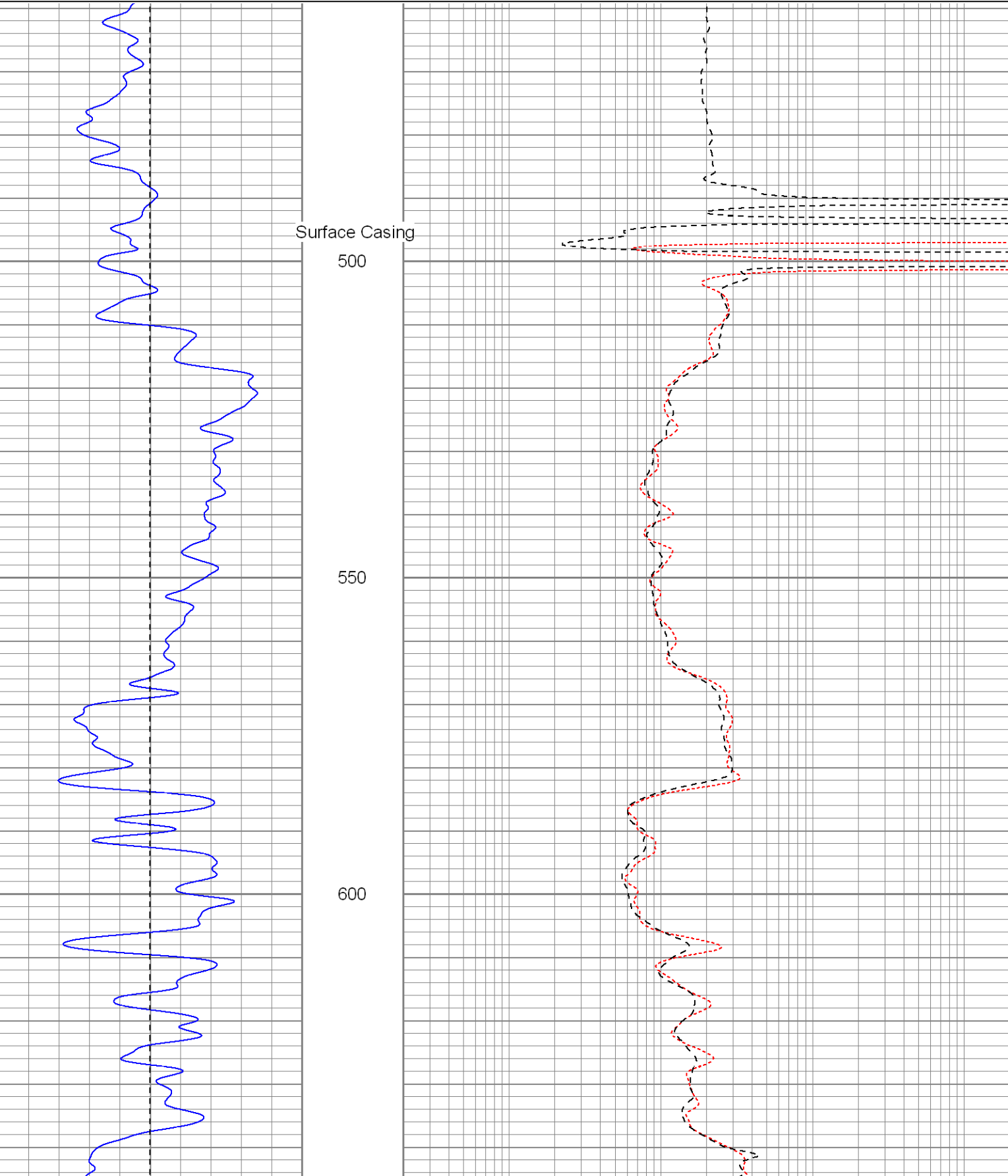
SUPERIOR
Black Lick, Pa.
Mercer, Pa.
Wooster, Oh.
Cleveland, Ok.
Trinidad, Co.

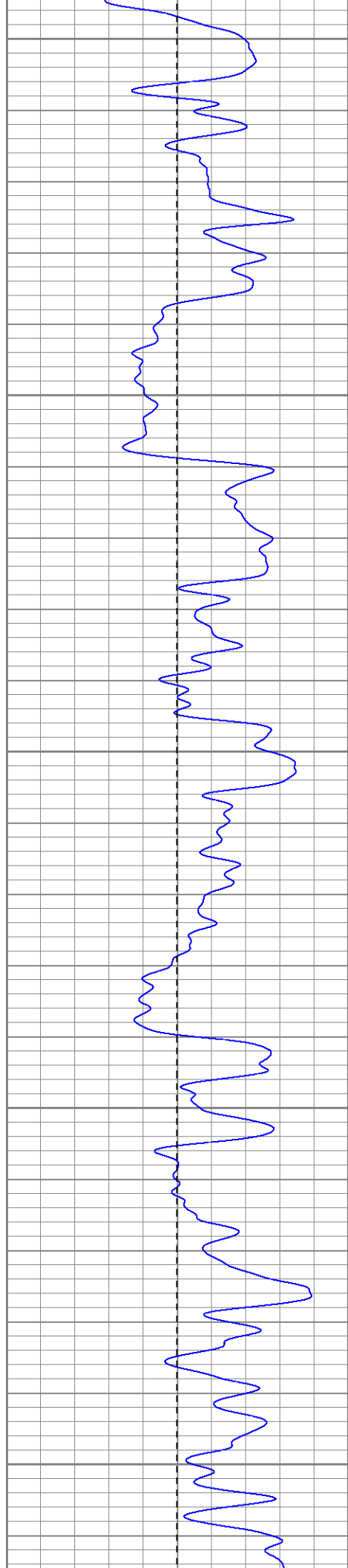
Main Pass

Database File: xtoac0509v.db
Dataset Pathname: pass2.1
Presentation Format: dil
Dataset Creation: Mon Jul 09 16:23:13 2007 by Calc Open-Cased 061129
Charted by: Depth in Feet scaled 1:240

0	GR (GAPI)	200
-100	SP (mV)	100

0.2	RILM (Ohm-m)	2000
0.2	RILD (Ohm-m)	2000
0.2	RLL3 (Ohm-m)	2000





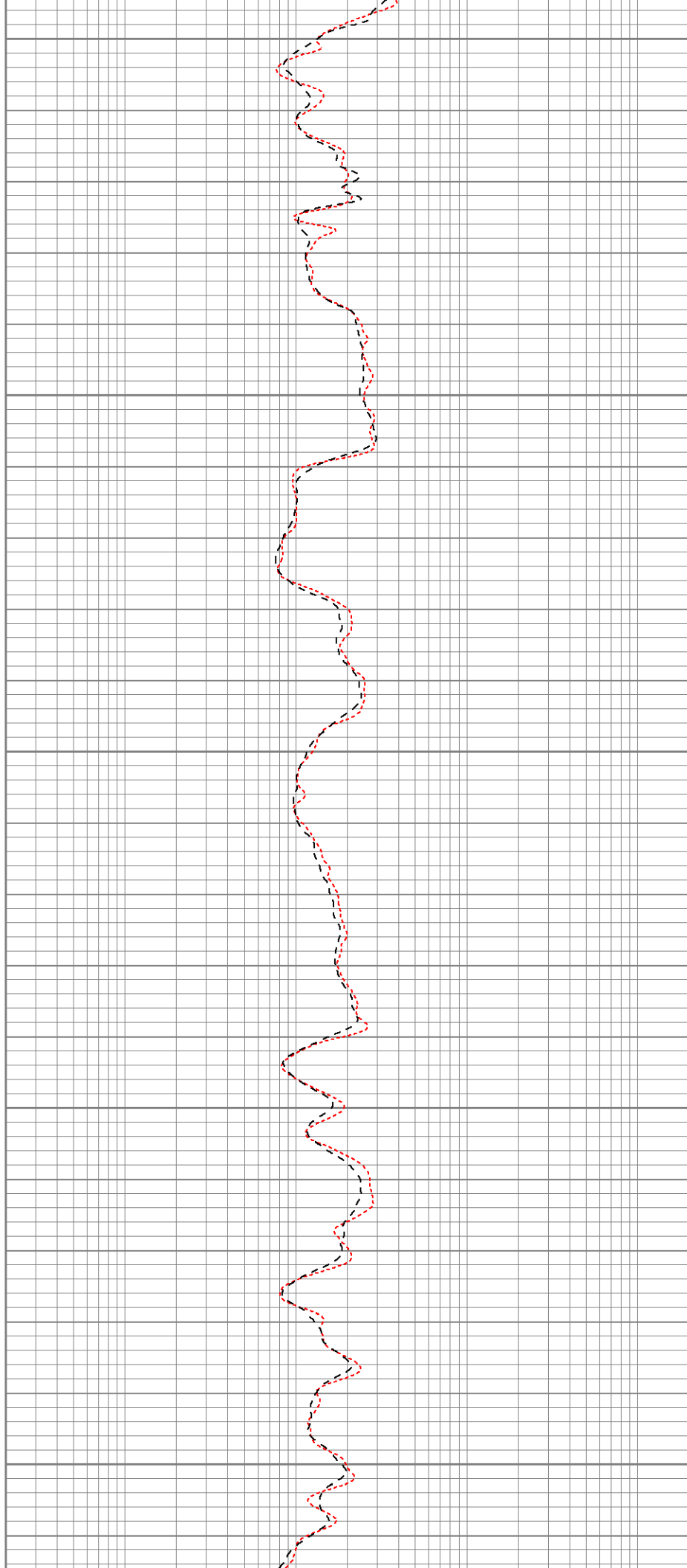
650

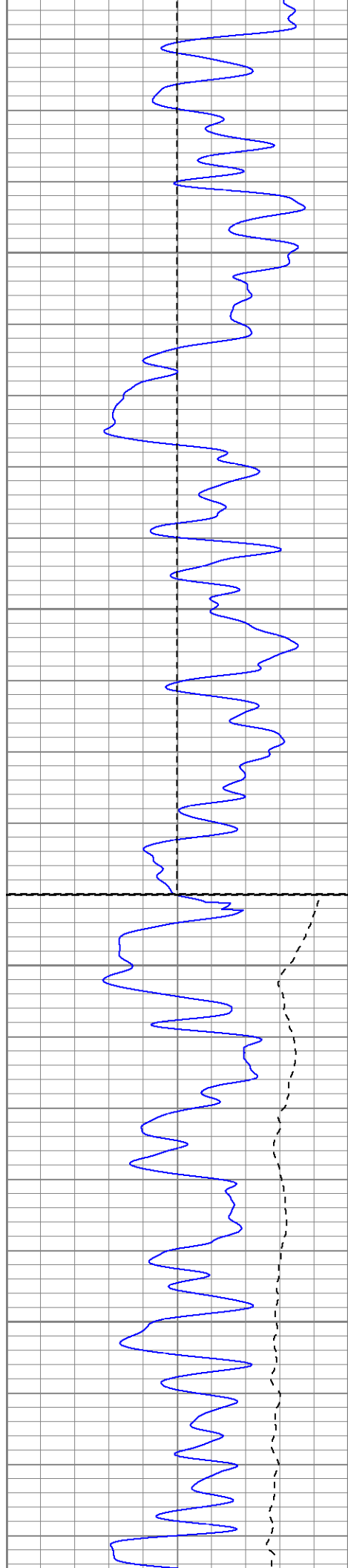
700

750

800

850





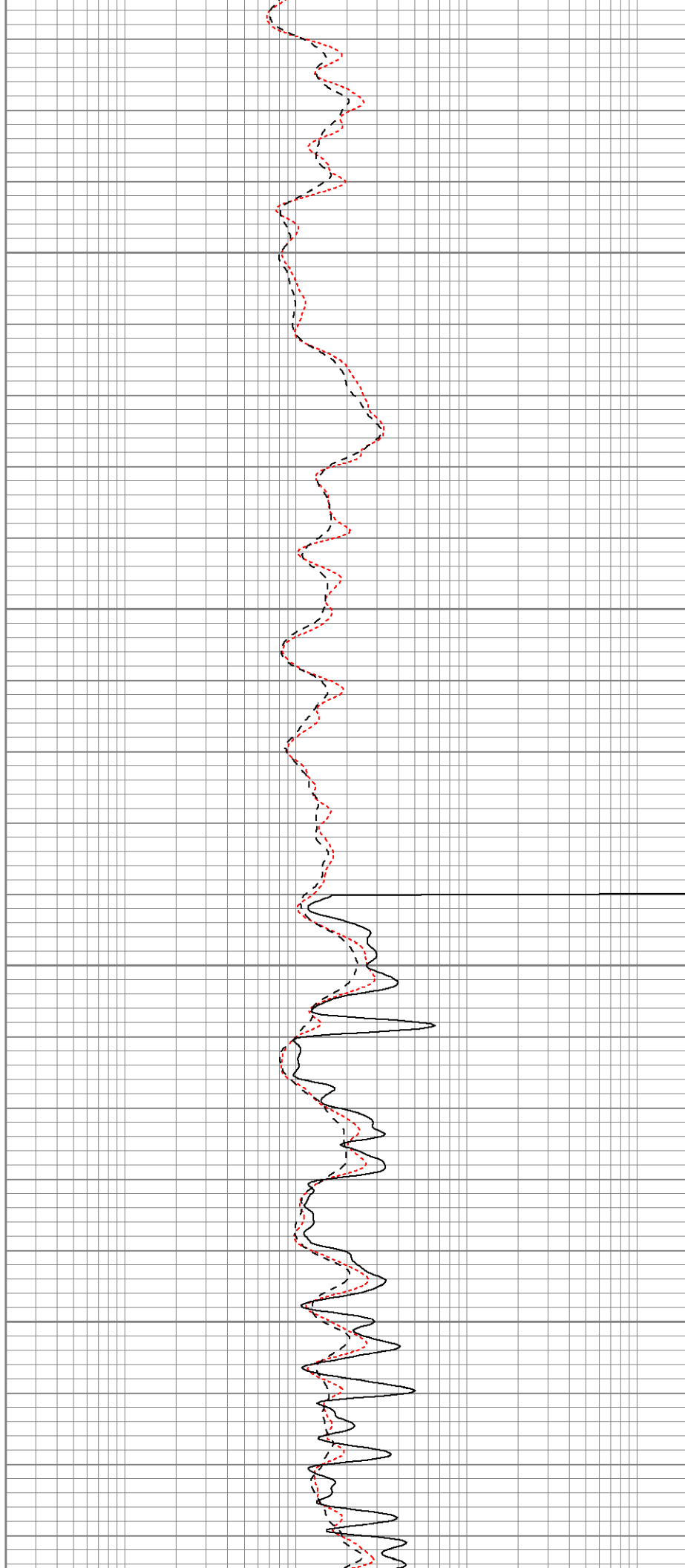
900

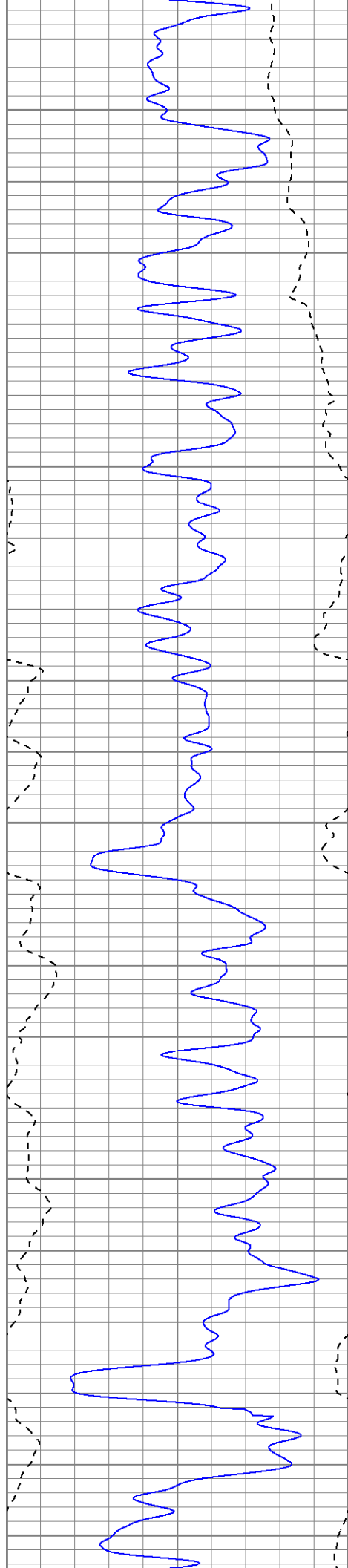
950

Fluid Level

1000

1050





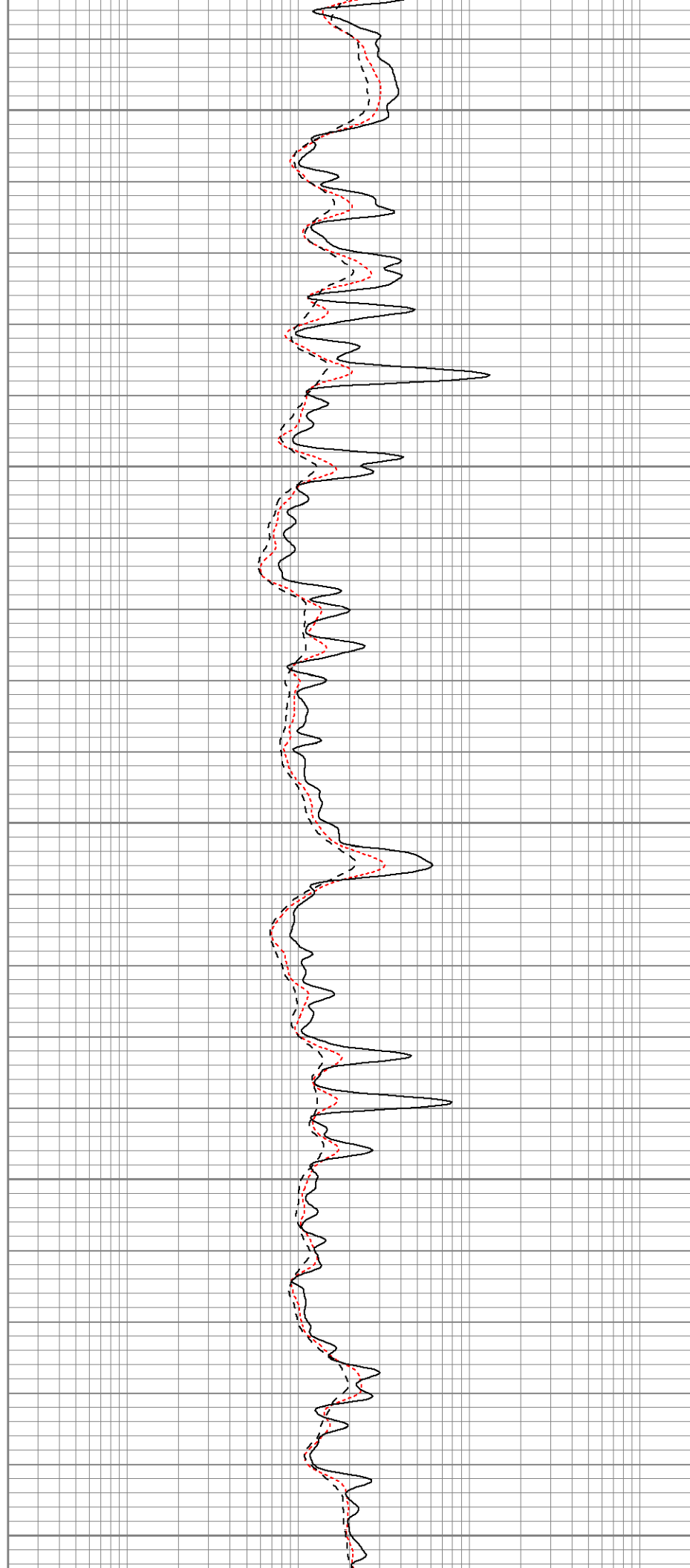
1100

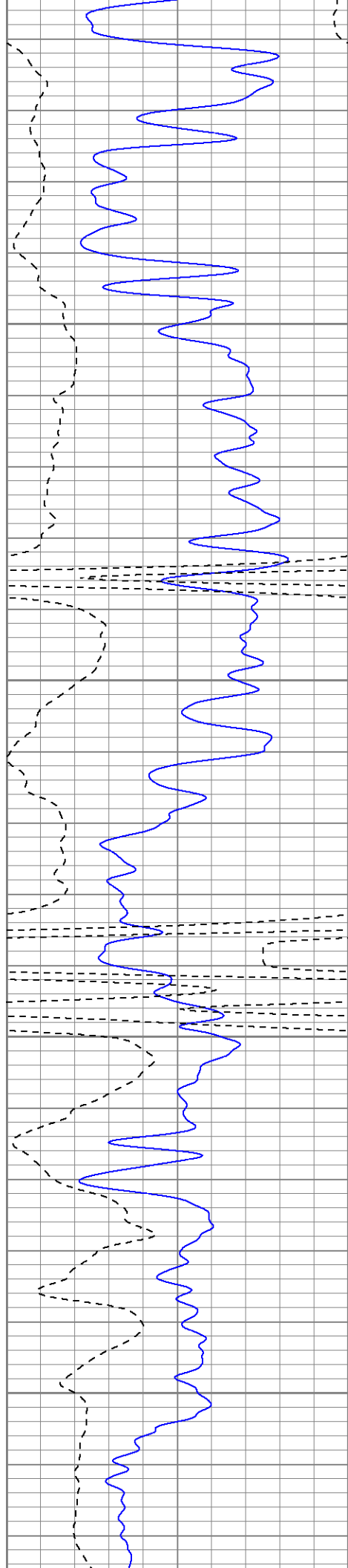
1150

1200

1250

1300



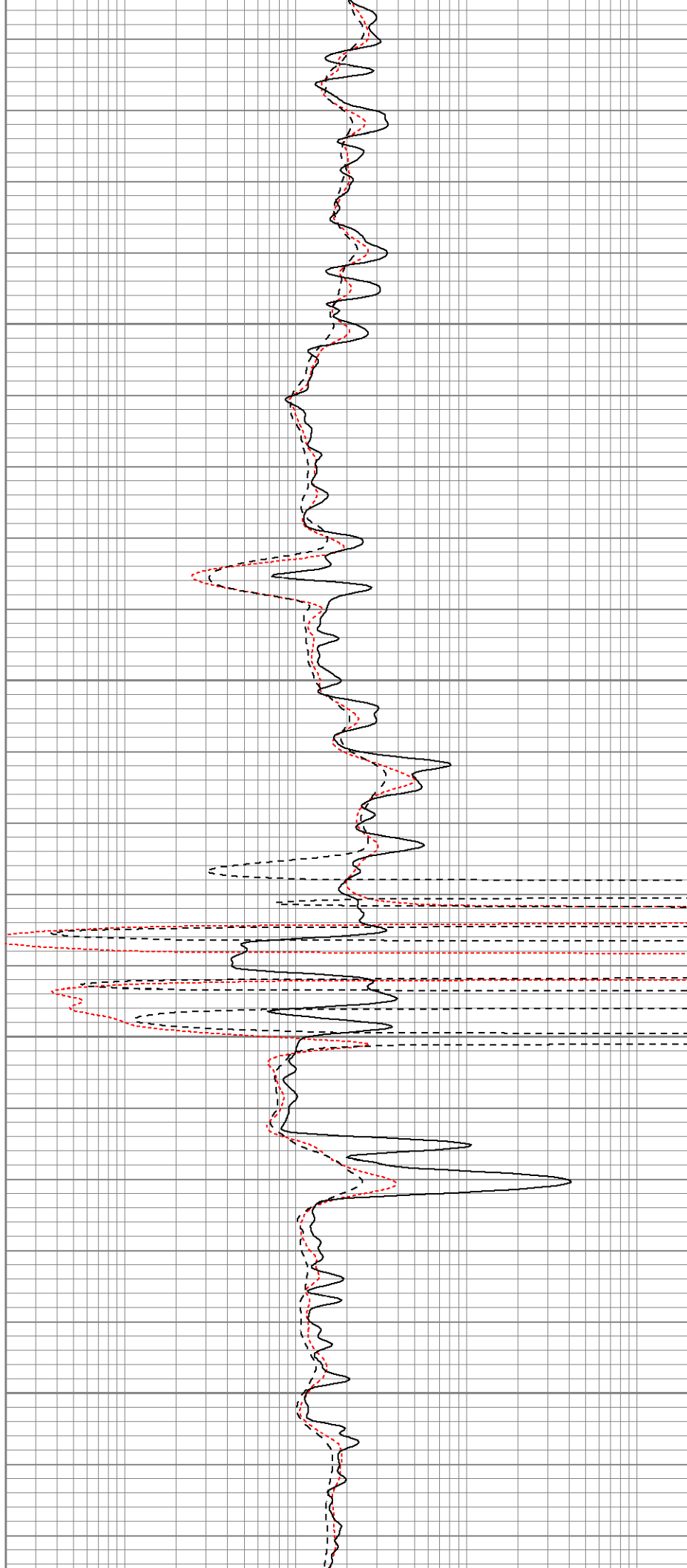


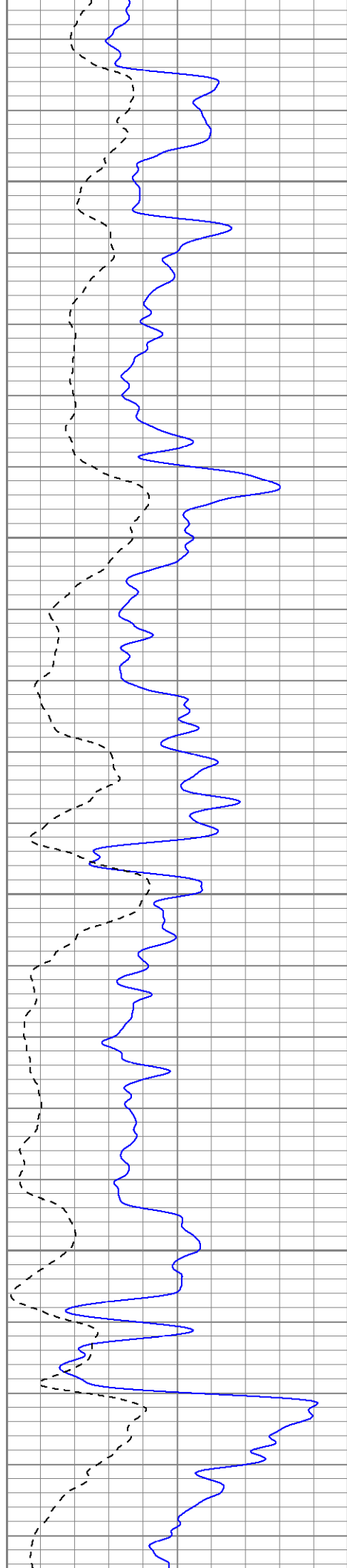
1350

1400

1450

1500



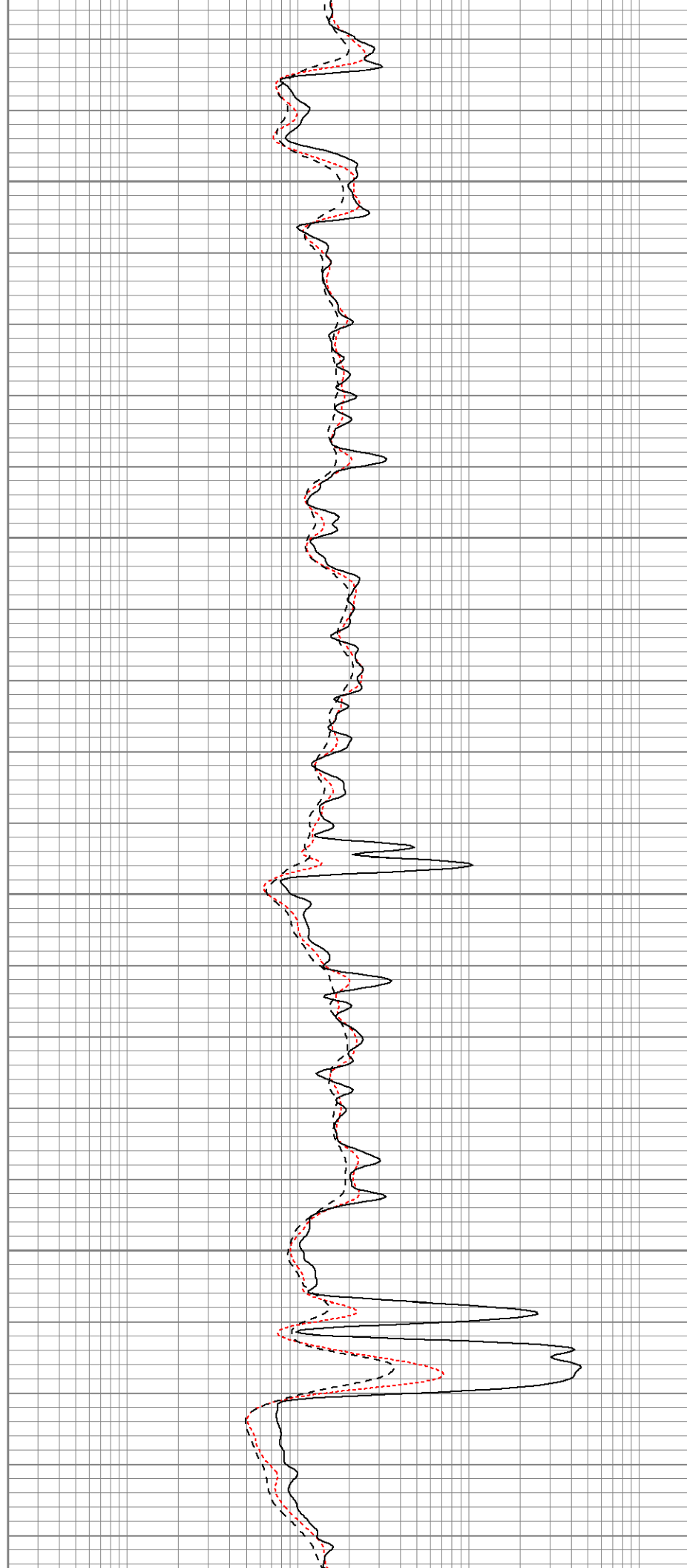


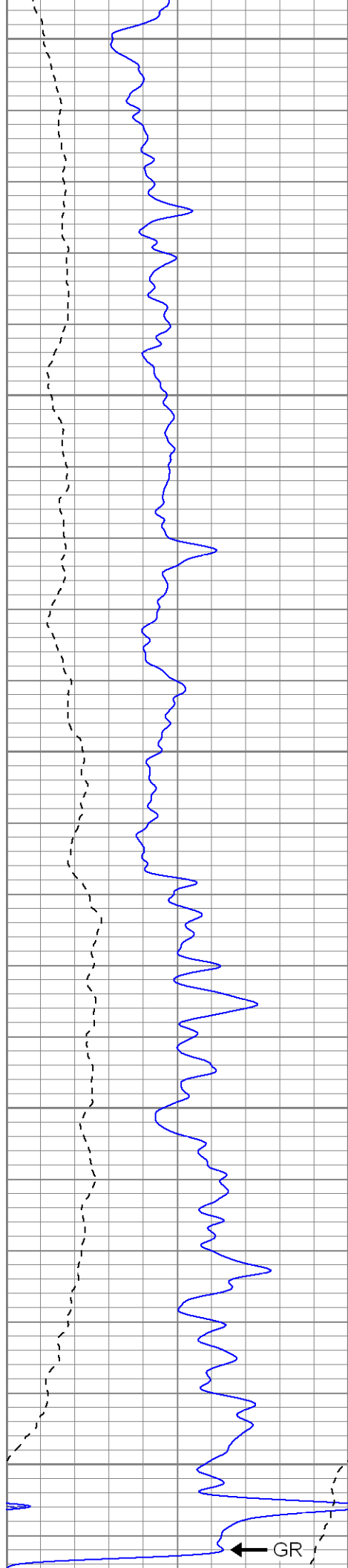
1550

1600

1650

1700





1750

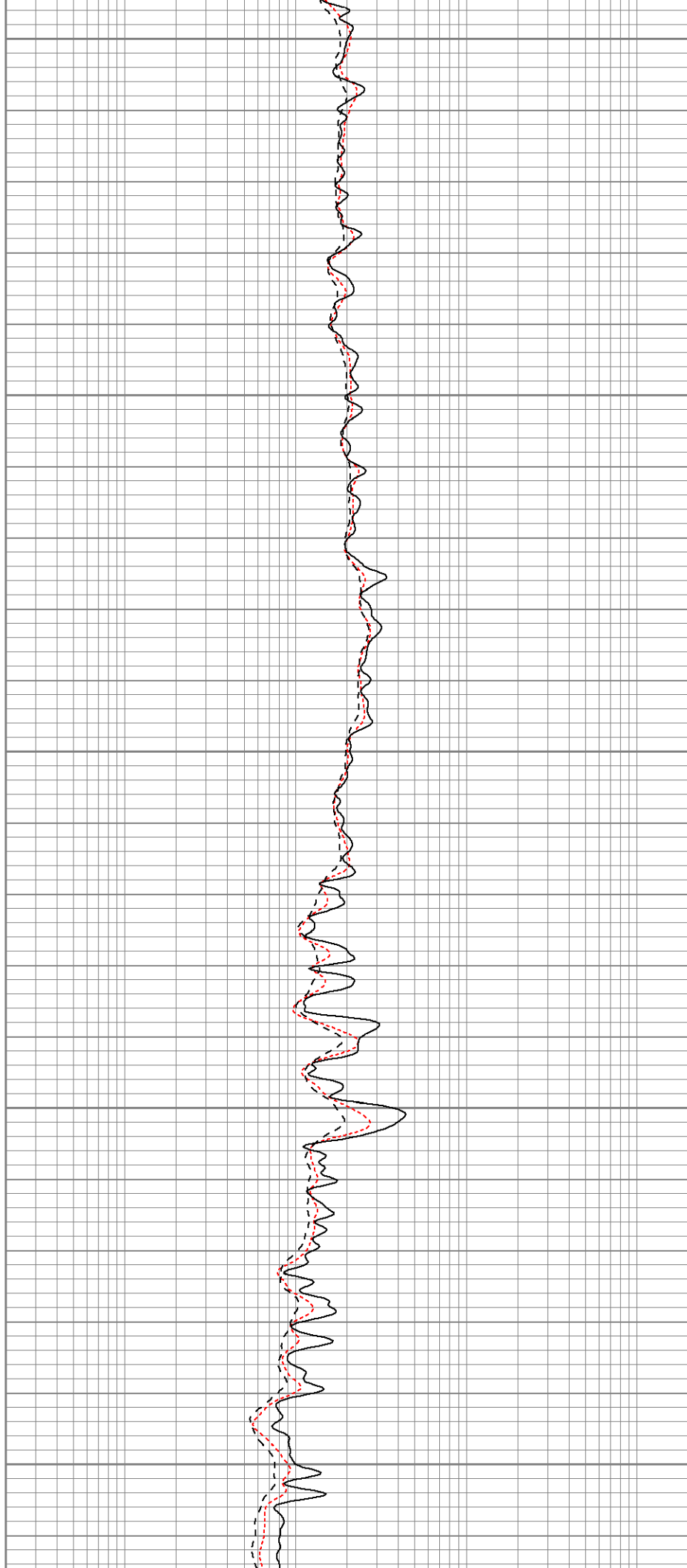
1800

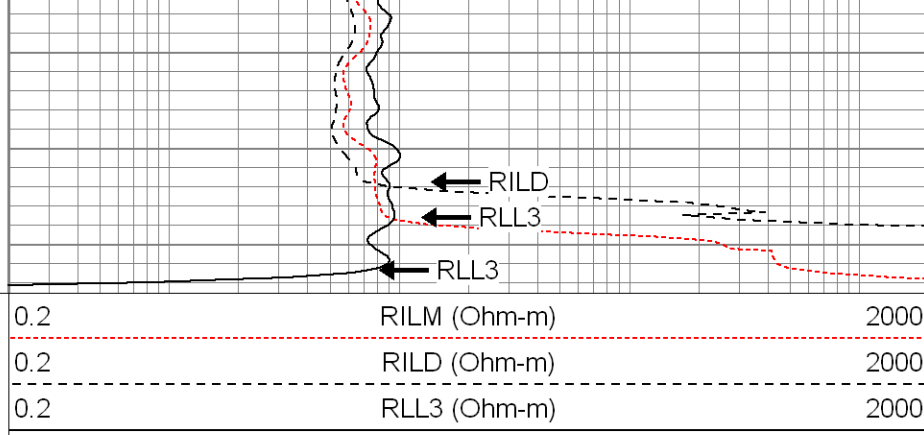
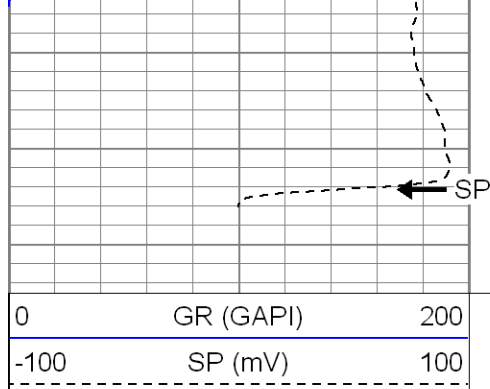
1850

1900

1950

← GR





SUPERIOR

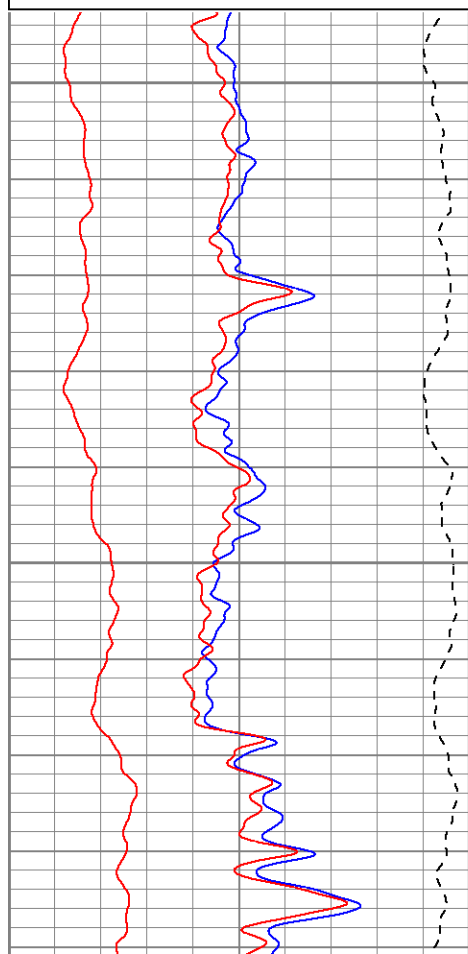
Black Lick, Pa.
Meroer, Pa.
Wooster, Oh.
Cleveland, Ok.
Trinidad, Co.

Repeat Section

Database File: xtoac0509v.db
Dataset Pathname: pass1.1
Presentation Format: dil
Dataset Creation: Mon Jul 09 16:21:09 2007 by Calc Open-Cased 061129
Charted by: Depth in Feet scaled 1:240

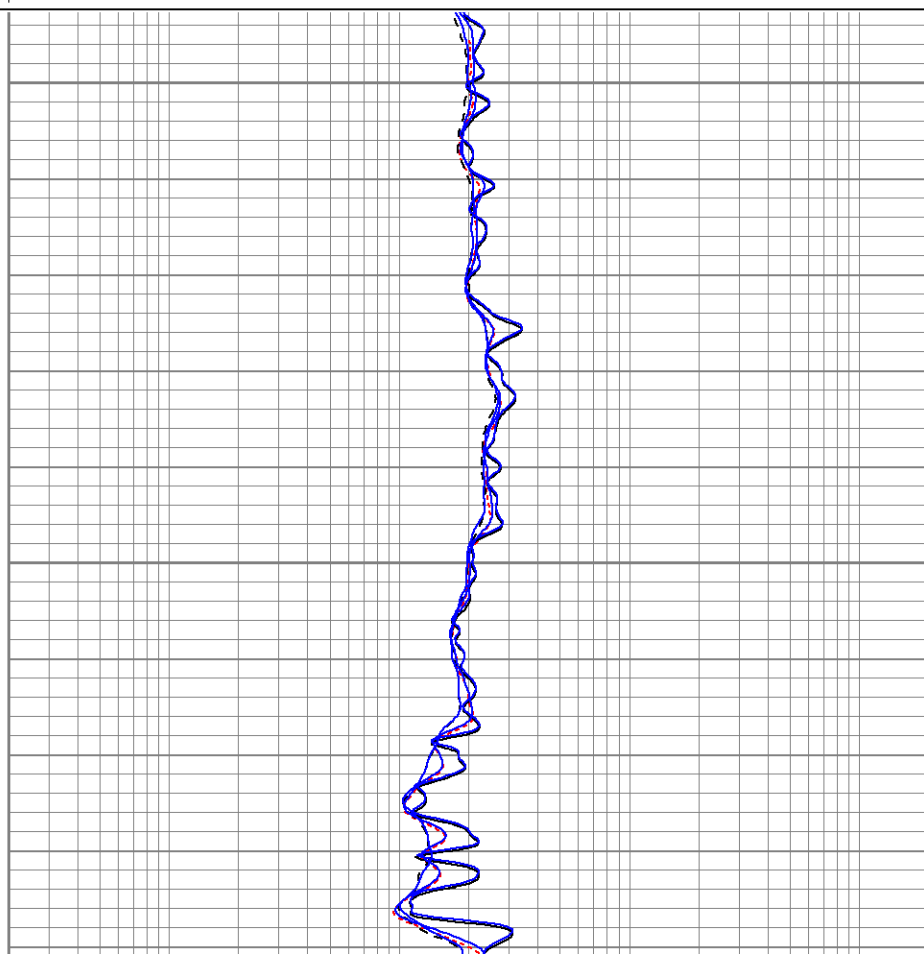
0	GR (GAPI)	200
-100	SP (mV)	100
0	GR-repeat (GAPI)	200
-100	SP-repeat (mV)	100

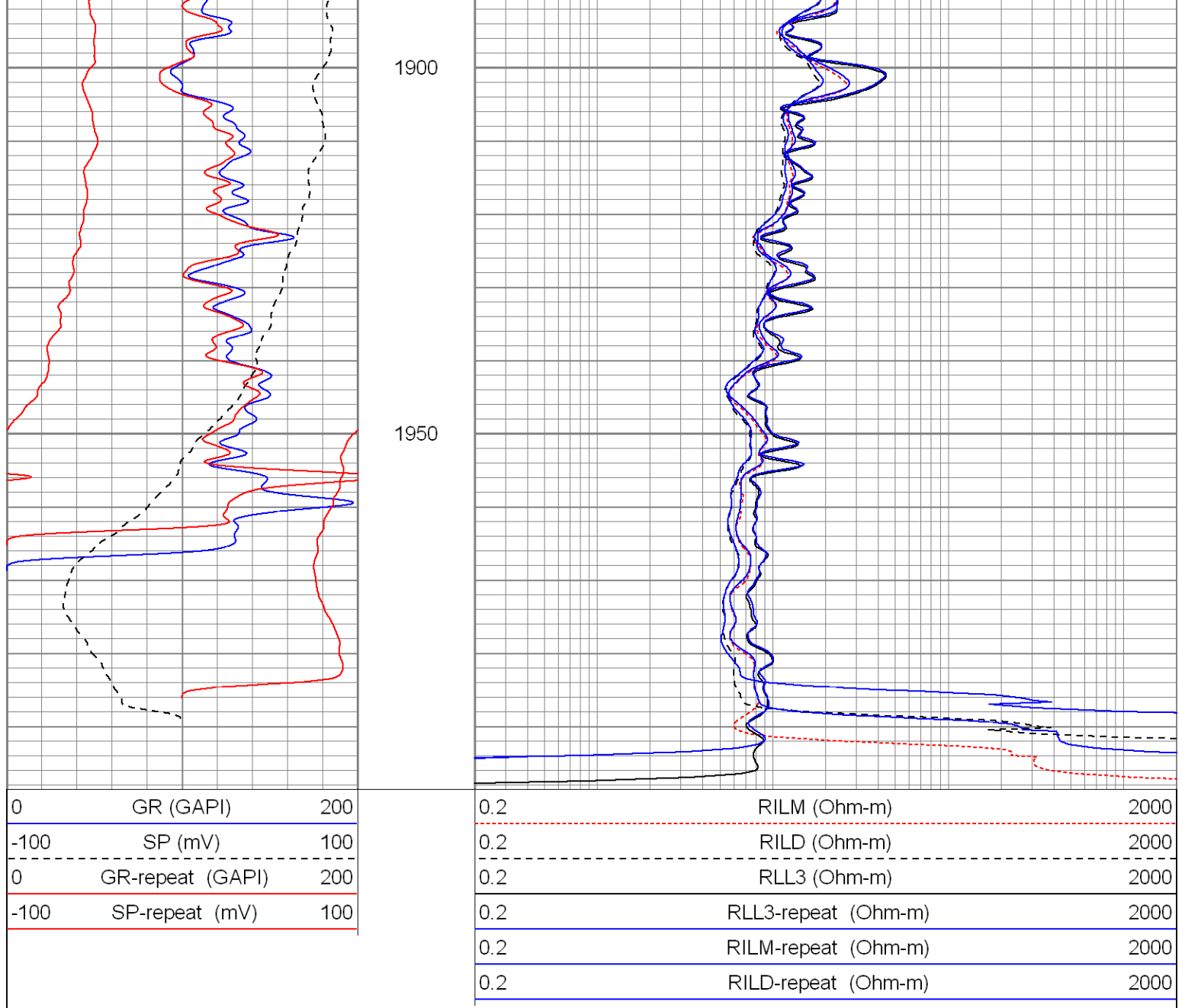
0.2	RILM (Ohm-m)	2000
0.2	RILD (Ohm-m)	2000
0.2	RLL3 (Ohm-m)	2000
0.2	RLL3-repeat (Ohm-m)	2000
0.2	RILM-repeat (Ohm-m)	2000
0.2	RILD-repeat (Ohm-m)	2000



1800

1850





Calibration Report								
Database File:		xtoac0509v.db						
Dataset Pathname:		pass2						
Dataset Creation:		Mon Jul 09 15:20:39 2007 by Log Open-Cased 061129						
Dual Induction Calibration Report								
Serial-Model:		5375-G						
Surface Cal Performed:		Thu Jul 05 11:35:02 2007						
Downhole Cal Performed:		Thu Jul 05 11:35:16 2007						
Surface Calibration								
		Readings			References		Results	
Loop:	Air	Loop		Air	Loop		m	b
Deep	0.001	0.620	V	0.000	500.000	mmho-m	807.659	-1.119
Medium	0.005	0.743	V	0.000	550.000	mmho-m	744.727	-3.505
Internal:	Zero	Cal		Zero	Cal		m	b
Deep	0.001	0.620	V	0.000	500.000	mmho-m	807.698	-1.159
Medium	0.005	0.743	V	0.000	550.000	mmho-m	744.727	-3.505

Medium	0.005	0.743	V	0.000	550.000	mmho-m	744.801	-3.569
Downhole Calibration								
			Readings		References		Results	
Internal:	Zero	Cal		Zero	Cal		m	b
Deep	0.123	499.901	mmho-m	0.039	500.015	mmho-m	1.000	-0.084
Medium	0.245	549.982	mmho-m	0.064	550.009	mmho-m	1.000	-0.182
Shallow	2.506	0.009	V	500.000	2.000	Ohm-m	105.000	0.000

Compensated Density Calibration Report

Serial-Model:	2118-poilex
Source / Verifier:	/
Master Calibration Performed:	Mon May 14 16:51:32 2007


Master Calibration						
			Density	Far Detector		Near Detector
Magnesium	1.710	g/cc		665.94	685.05	cps
Aluminum	2.590	g/cc		149.68	463.33	cps
Spine Angle = 75.32			Density/Spine Ratio = 0.570			
			Size	Reading		
Small Ring	7.85	in		4.20	V	
Large Ring	14.00	in		9.25	V	

Gamma Ray Calibration Report

Serial Number:	2001	
Tool Model:	OH	
Performed:	Tue May 29 19:51:06 2007	
Calibrator Value:	1.0	GAPI
Background Reading:	0.0	cps
Calibrator Reading:	1.0	cps
Sensitivity:	0.1700	GAPI/cps

Neutron Calibration Report

Serial Number:	5145	
Tool Model:	G	
Performed:	Mon Apr 23 18:30:25 2007	
Calibrator Value:	1200	NAPI
Calibrator Reading:	1700	cps
Sensitivity:	1	NAPI/cps

Sensor	Offset (ft)	Schematic	Description	Len (ft)	OD (in)	Wt (lb)
NEU	37.19		None	0.75	1.50	5.00
			NEU-G (5145) Gearhart Epithermal	5.75	3.50	85.00

