



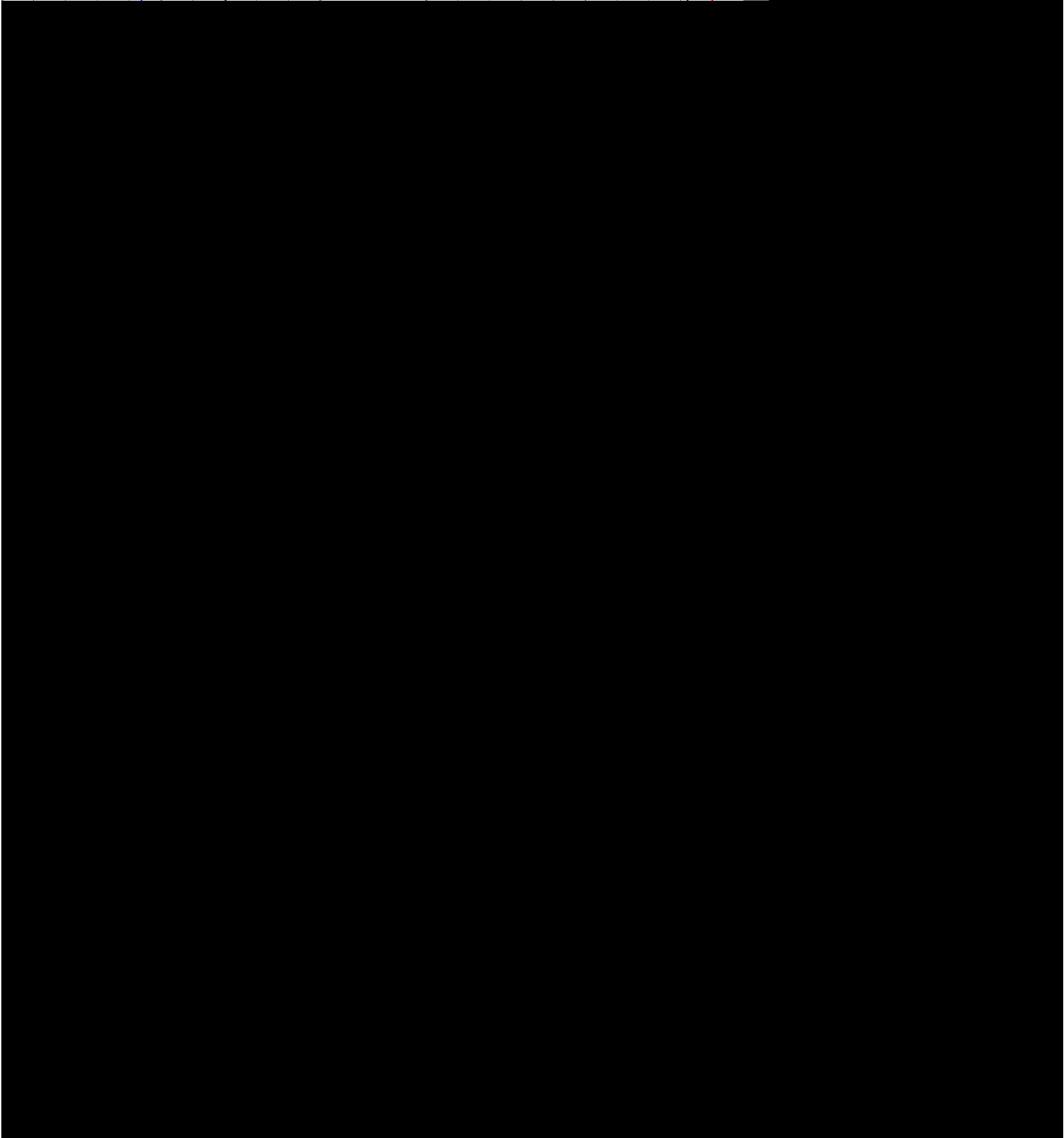
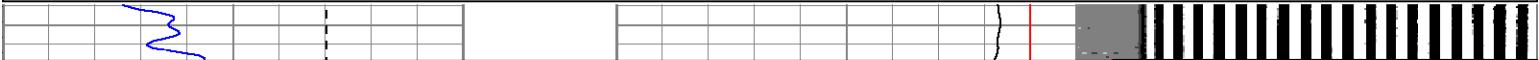
SUPERIOR
Black Lick
Mercer, KY
Wooster, OH
Cleveland, OH
Trinidad, CO

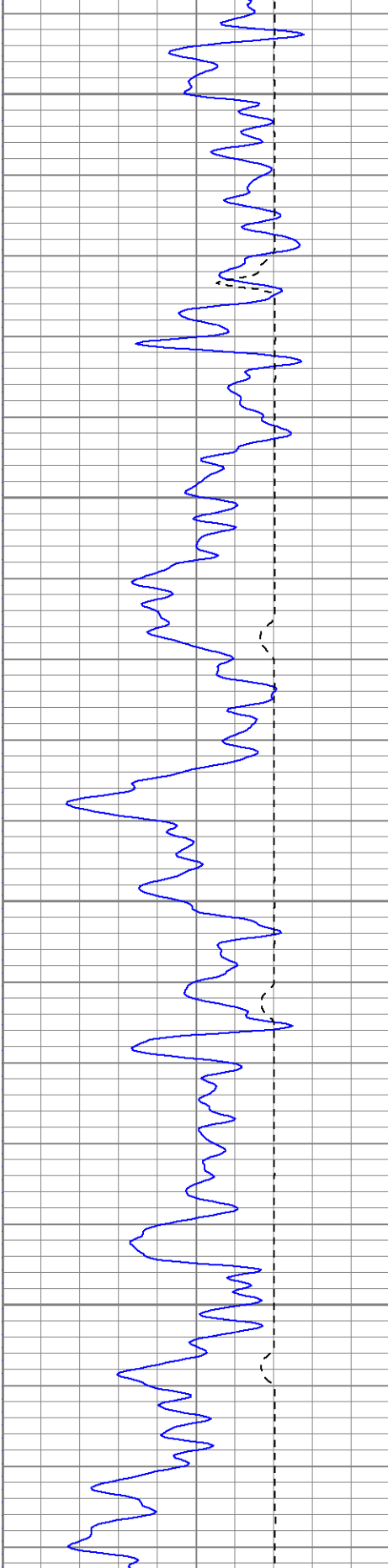
Company XTO Energy, Inc.
Well Apache Canyon 18-13
Field Purgatoire River
County Las Animas
State CO

Company		Permanent D
Well		Log Measure
Field		Drilling Meas
County		
Location		
Date		
Run Number		
Depth Driller		
Depth Logger		
Bottom Logged Interval		
Top Log Interval		
Open Hole Size		
Type Fluid		
Density / Viscosity		
Max. Recorded Temp.		
Estimated Cement Top		
Time Well Ready		
Time Logger on Bottom		
Equipment Number		
Location		
Recorded By		
Witnessed By		
Borehole Record		
Run Number	Bit	Fracture
Casing Record		Size
Surface String		8 5/8
Prot. String		
Production String		5 1/2
Liner		

Database File: ac181311306b.db
Dataset Pathname: pass2
Presentation Format: cblrt
Dataset Creation: Fri Nov 03 11:45:30 2006 by Log Open-Cased 060407
Charted by: Depth in Feet scaled 1:240

0	GR (GAPI)	200	0	AMP3 (mV)	100	200	Variable Density	1200
200	GR (GAPI)	400	18	CCL	-2			
400	TT3 (usec)	200	200	CBL5	1200			



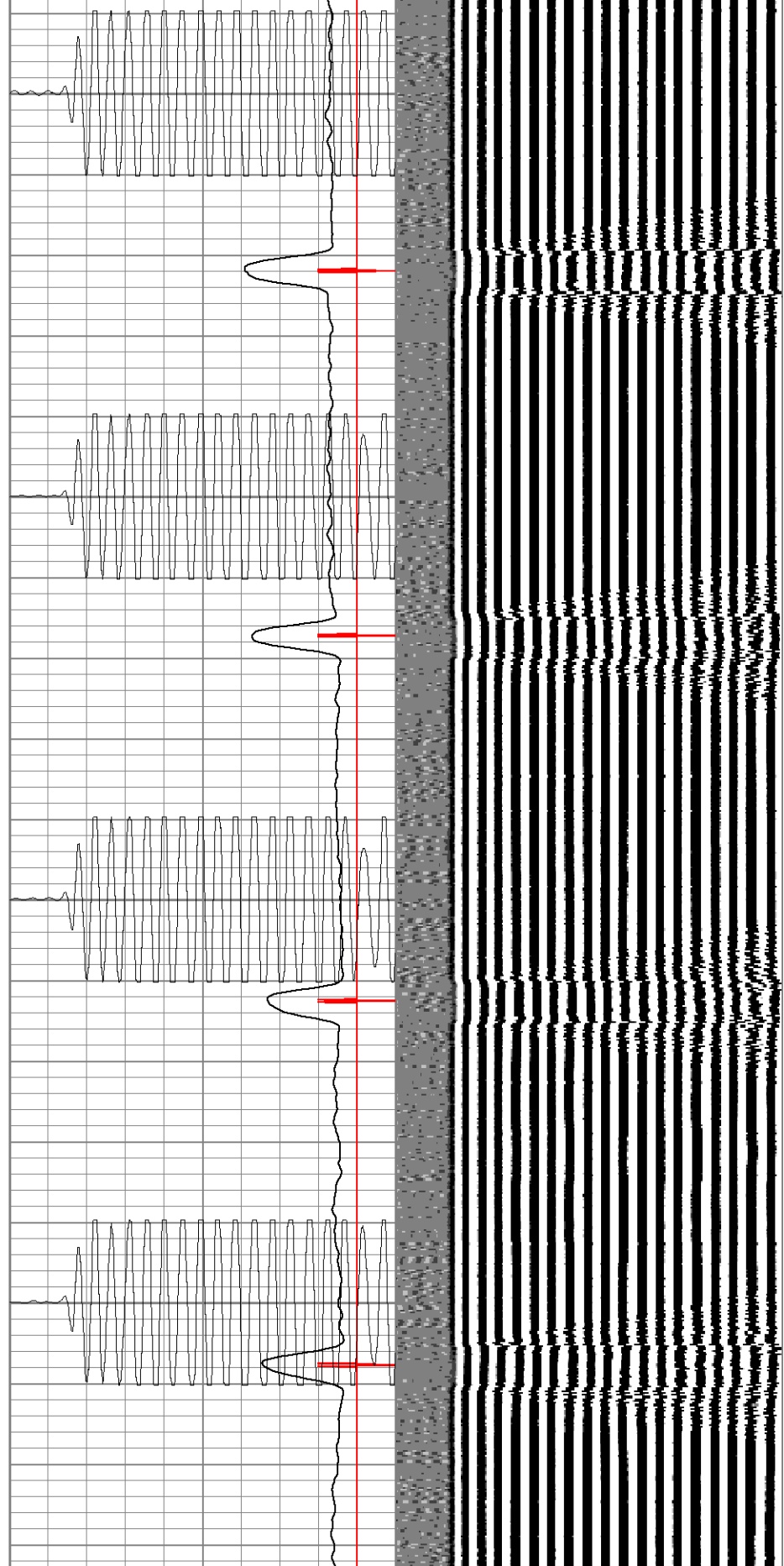


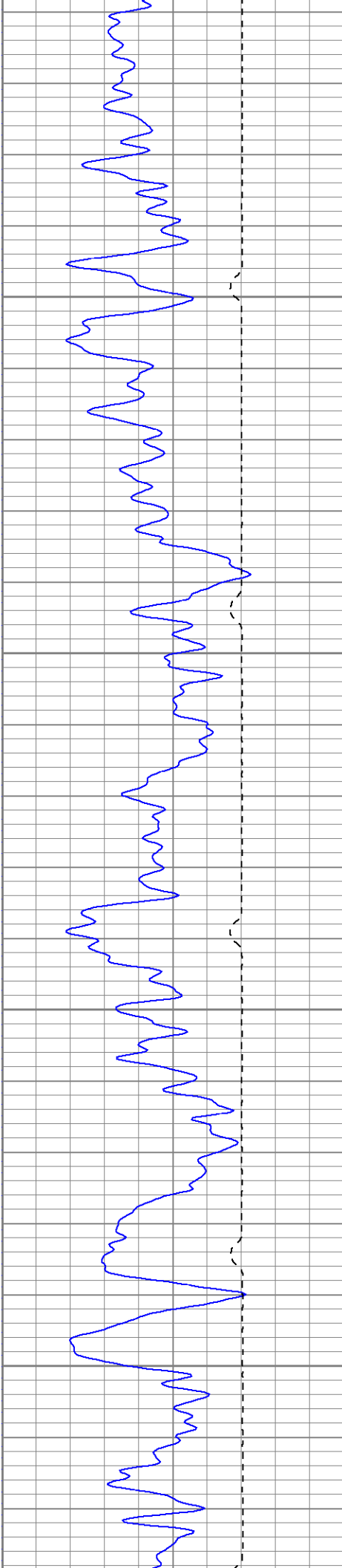
200

250

300

350



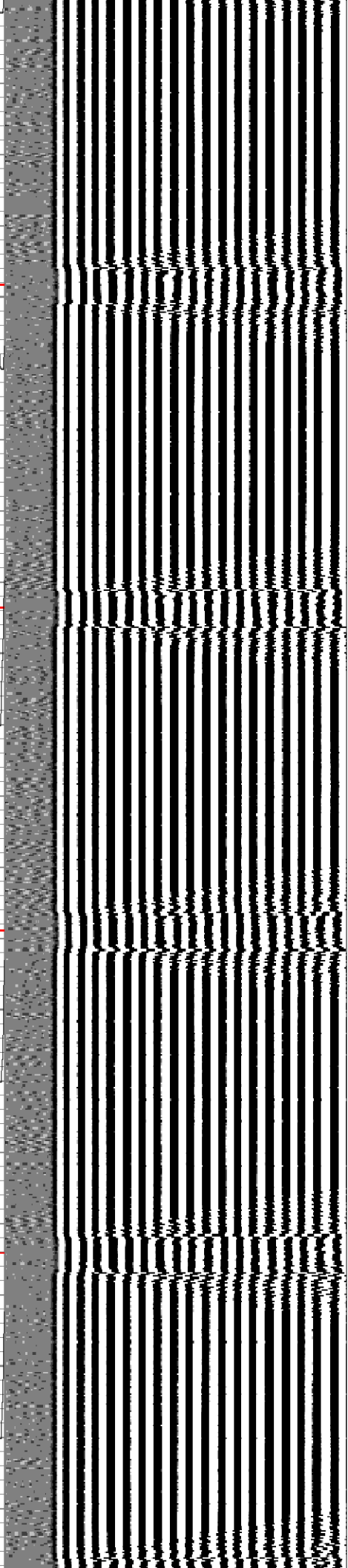


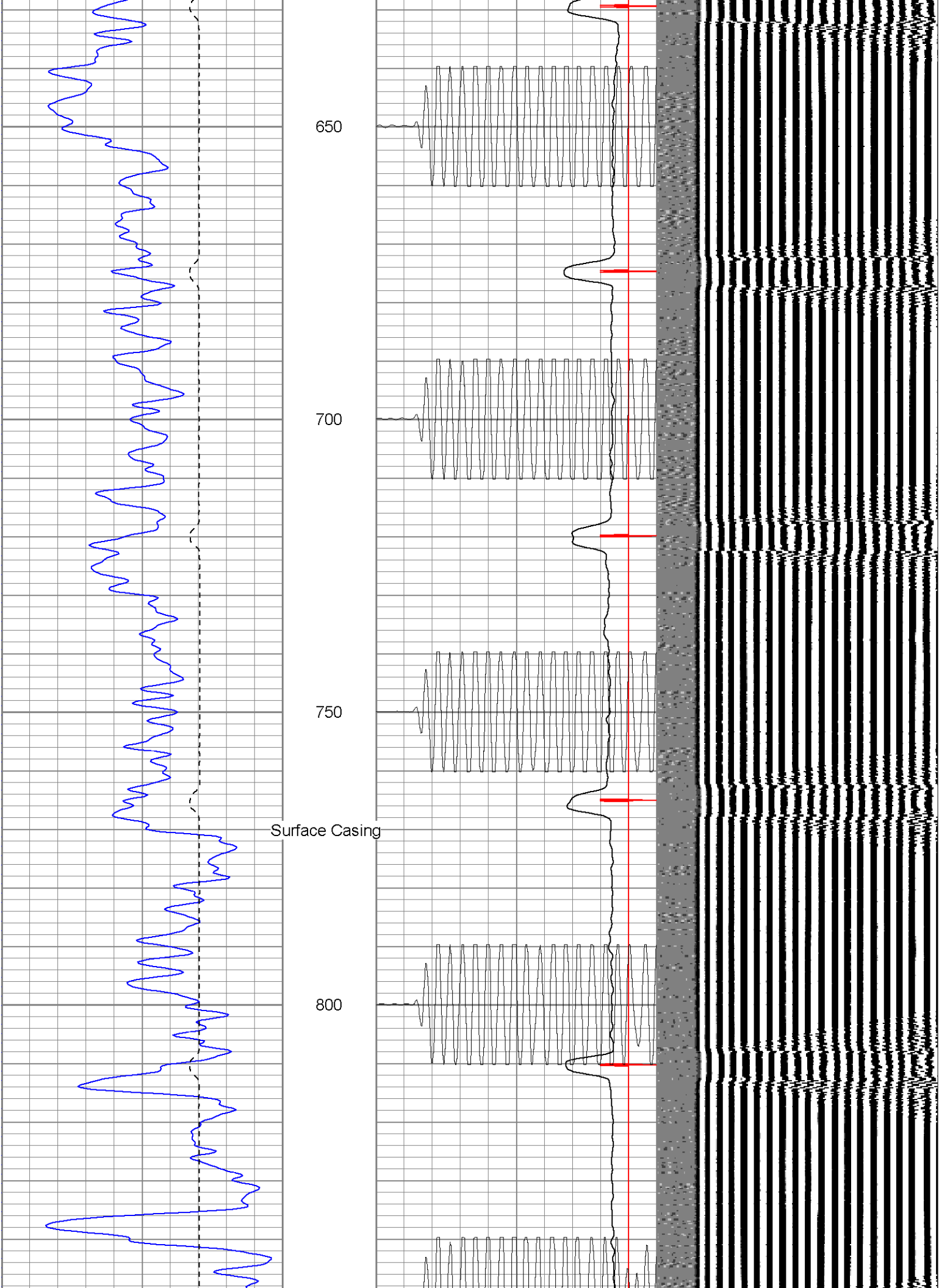
450

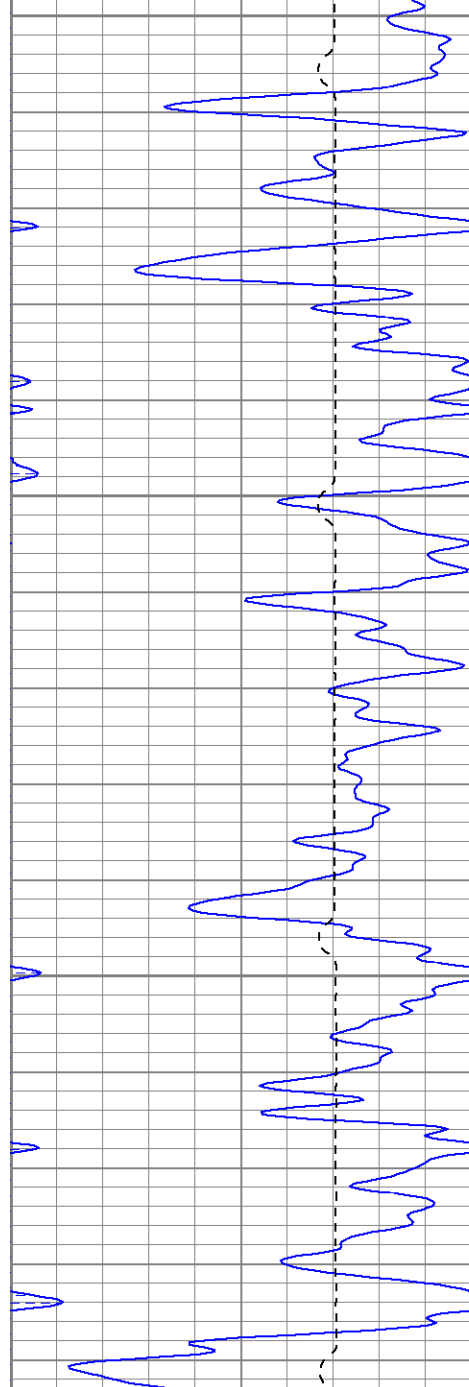
500

550

600



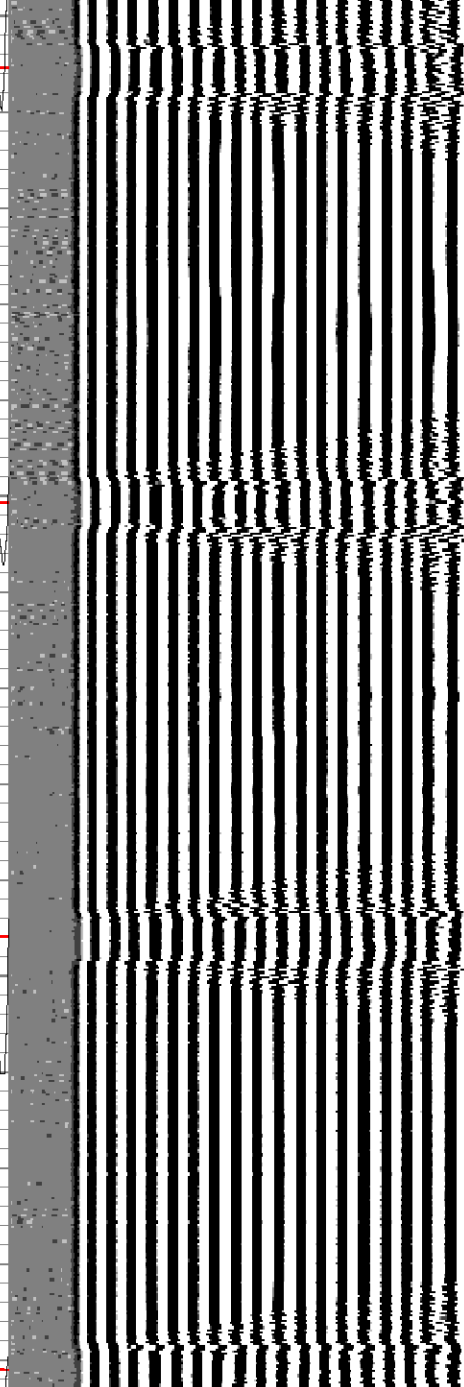
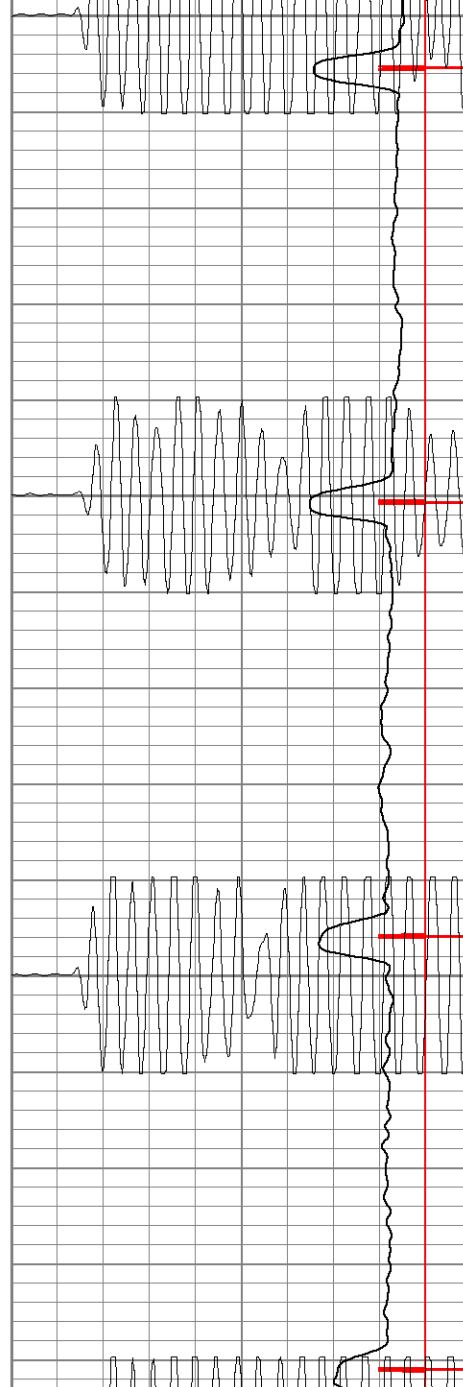


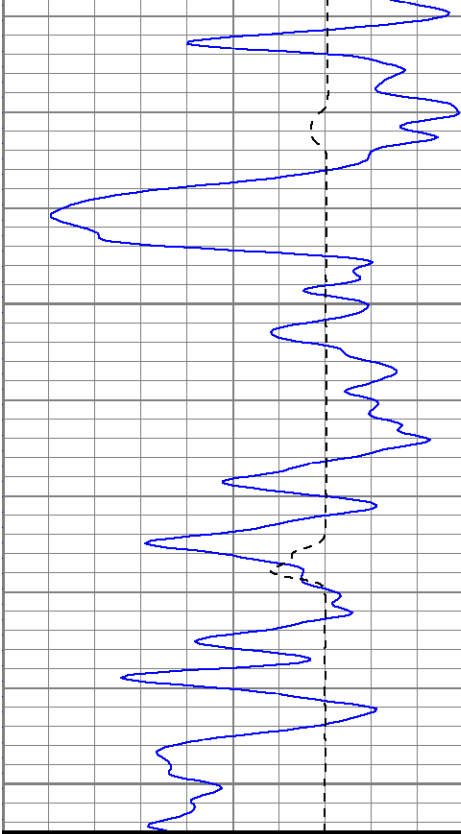


850

900

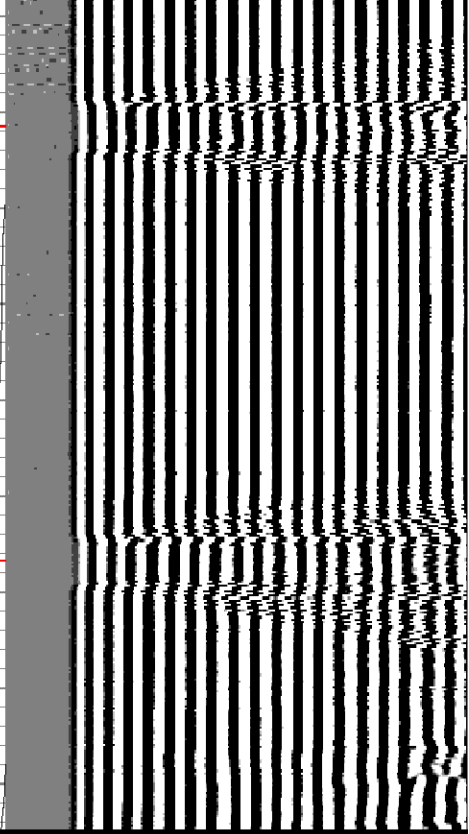
950

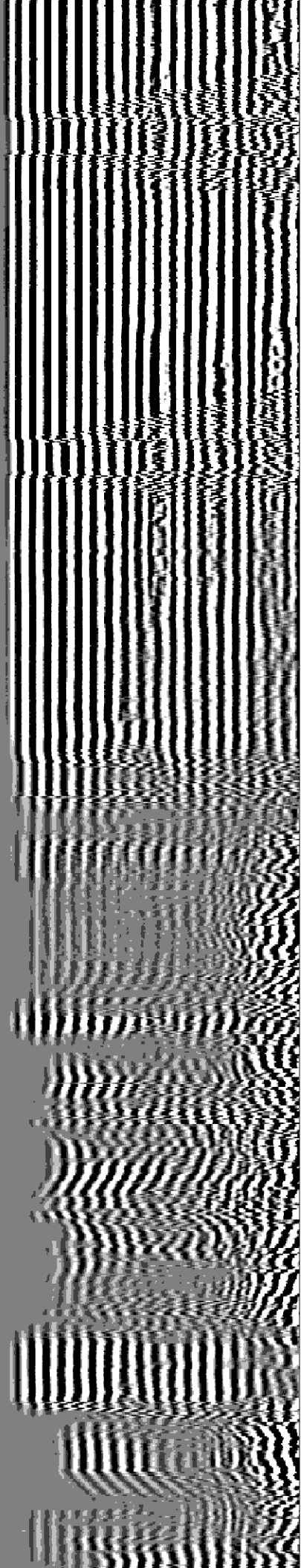
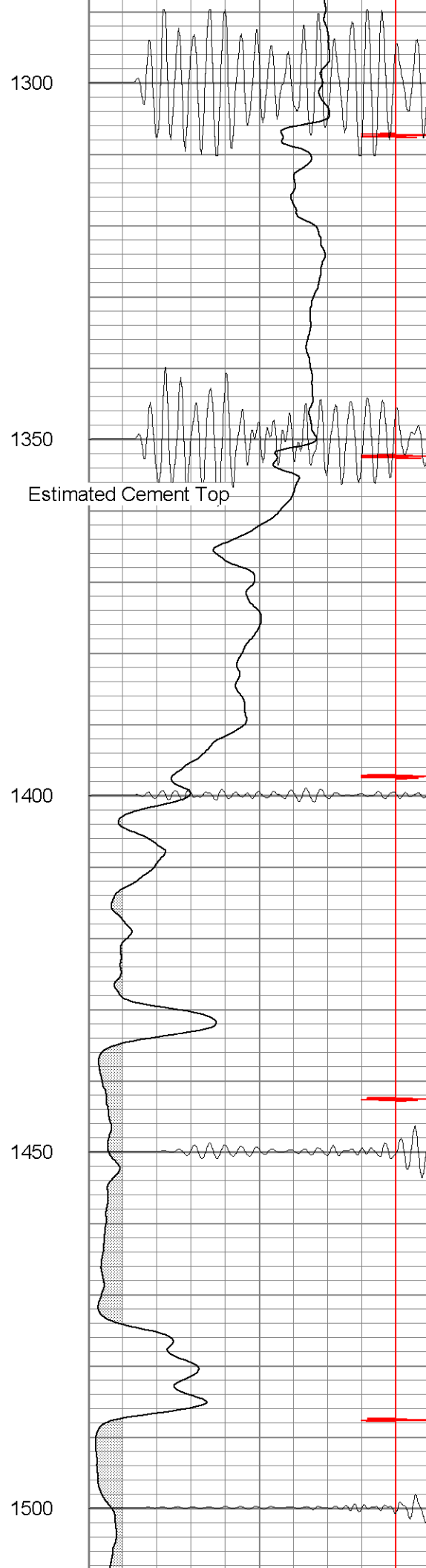
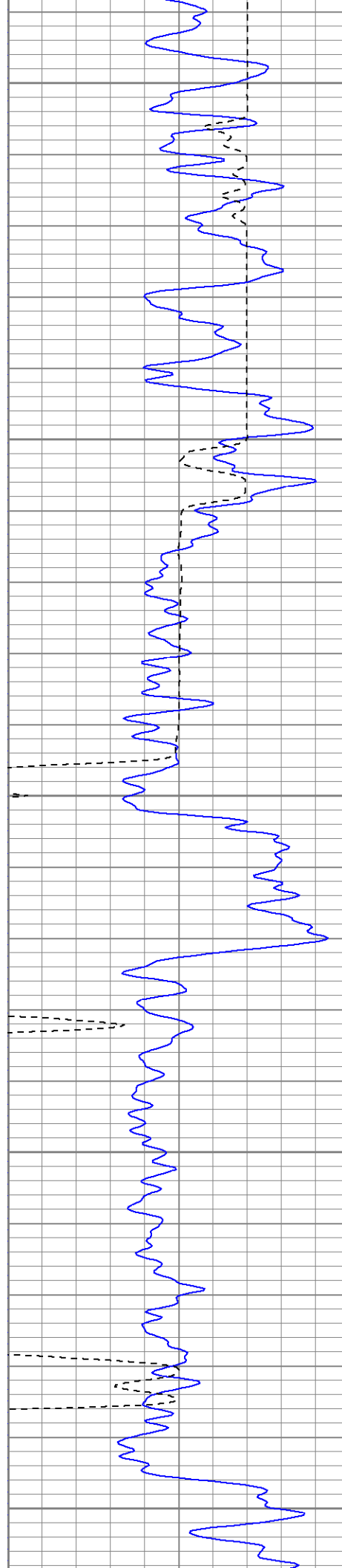


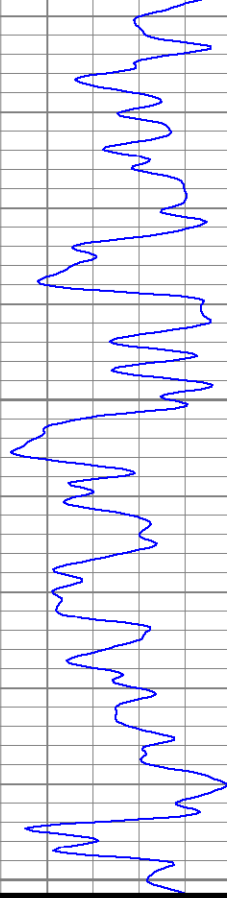


1100

1150

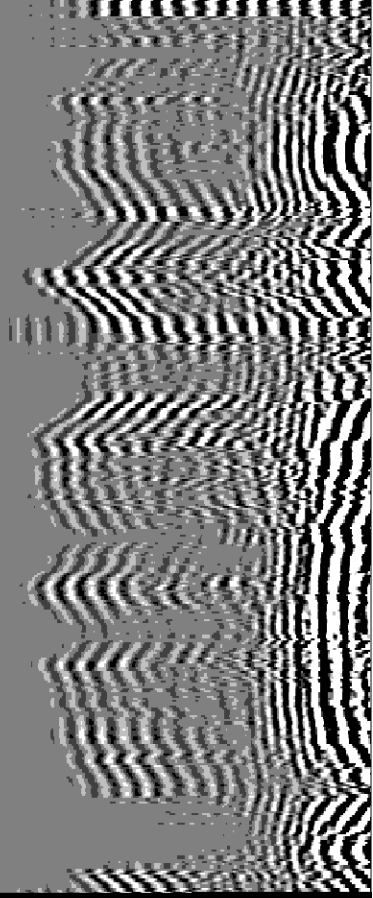
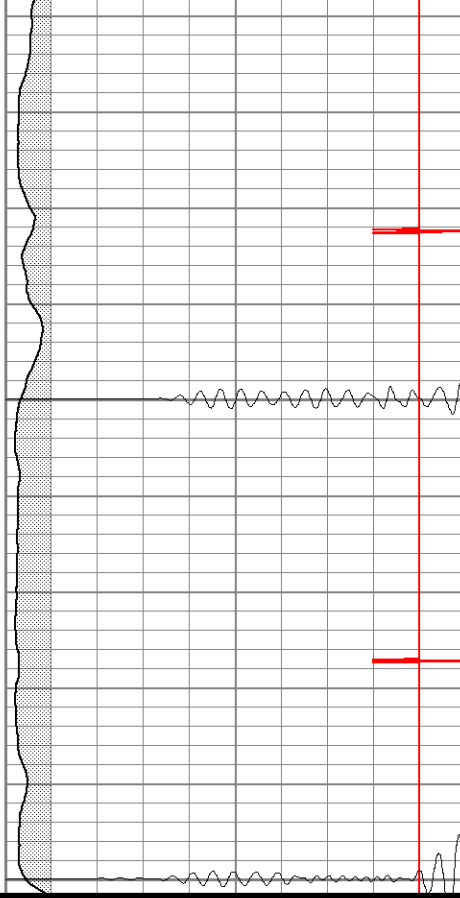


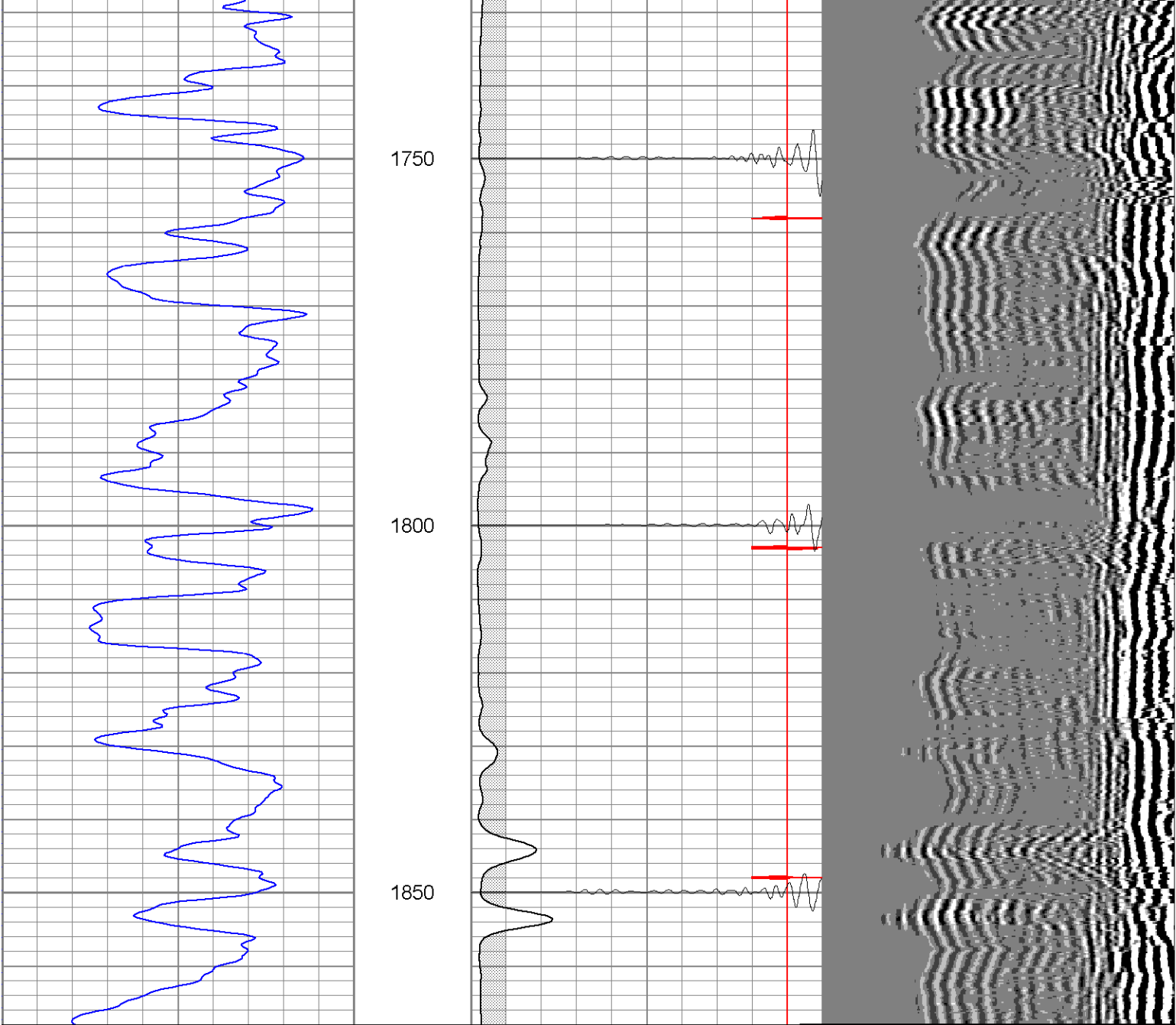


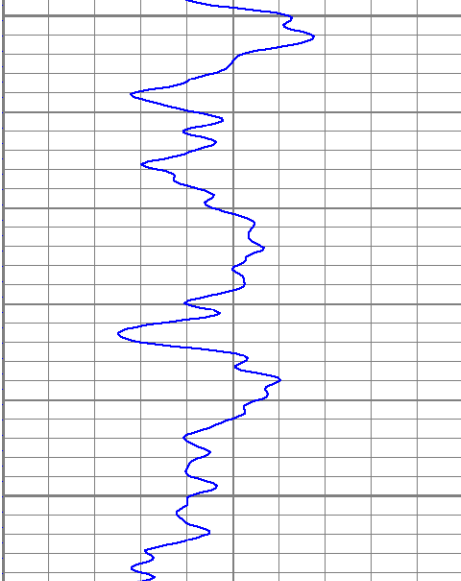


1550

1600

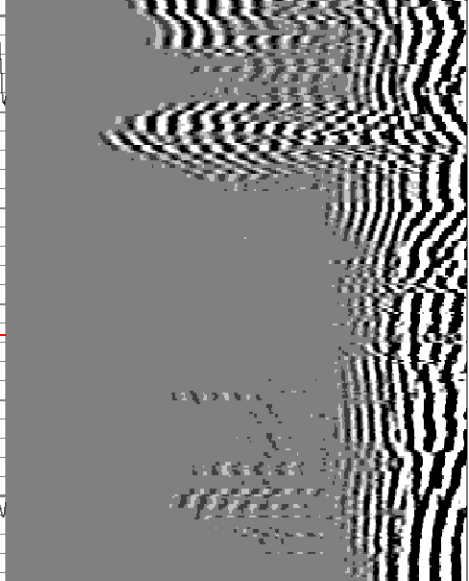
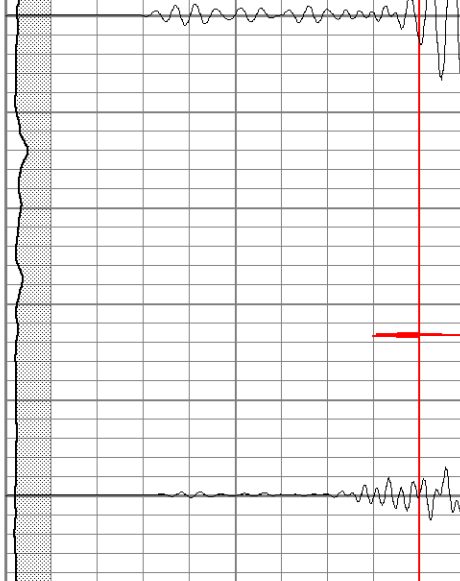


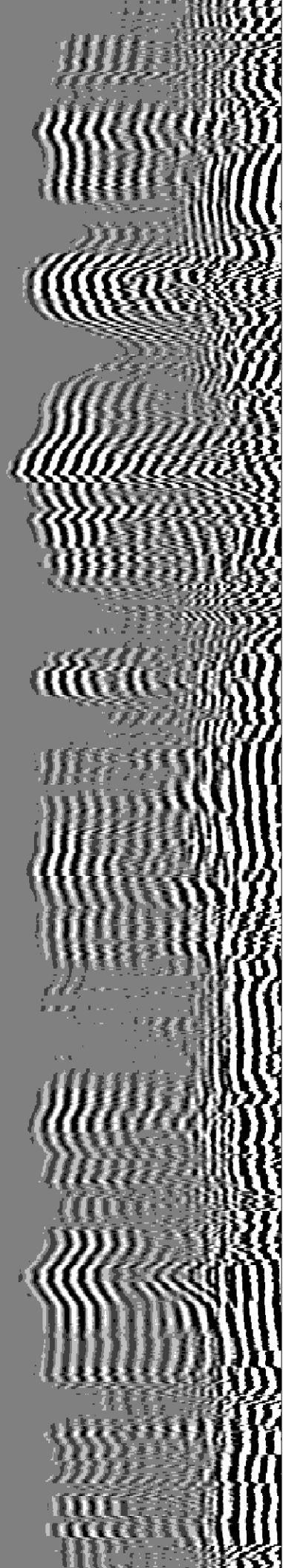
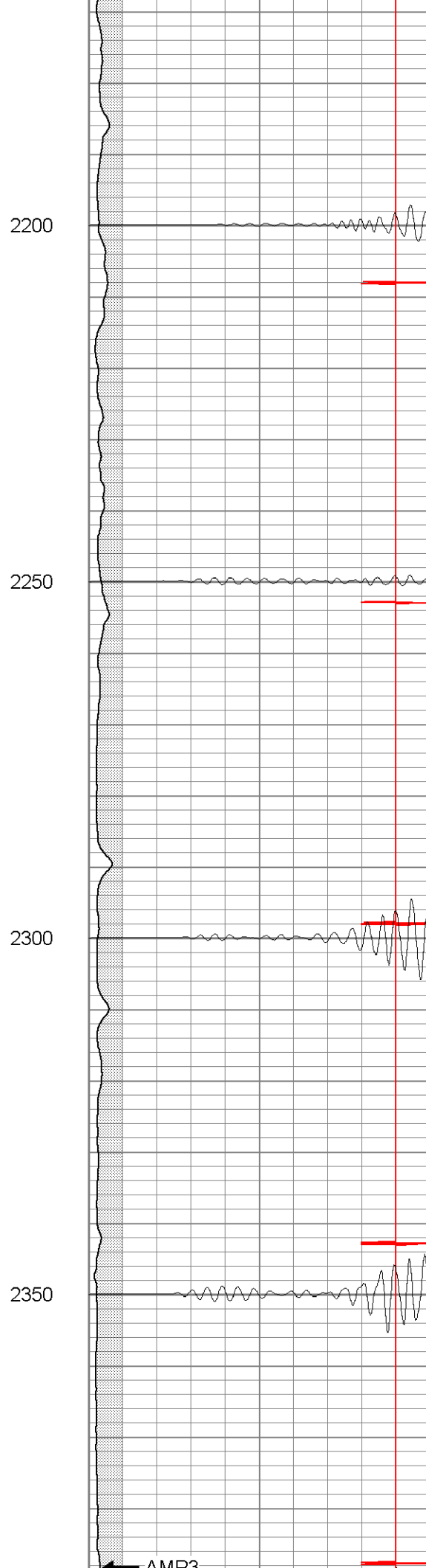
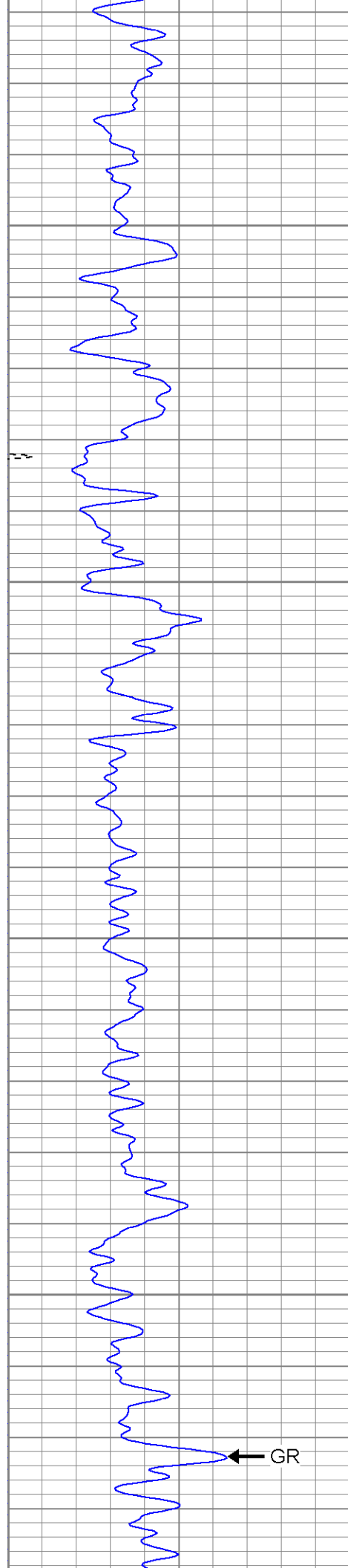


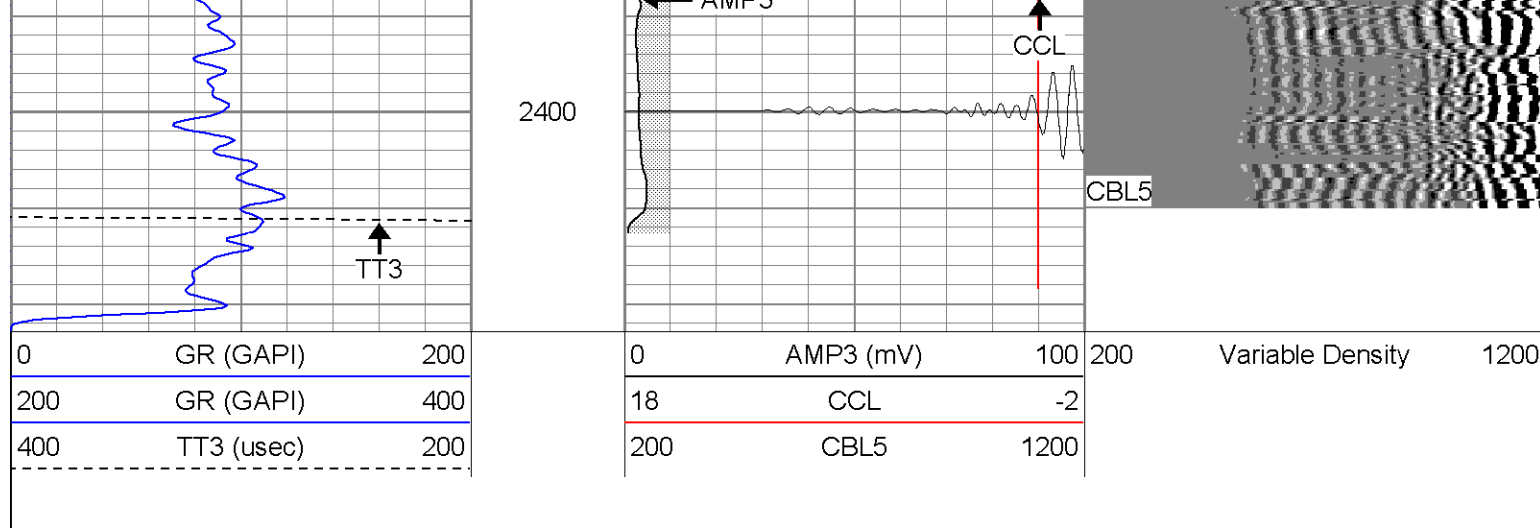



1950

2000









SUPERIOR
WELL SERVICES

Black Lick, Pa.
Mercer, Pa.
Wooster, Oh.
Cleveland, Ok.
Trinidad, Co.

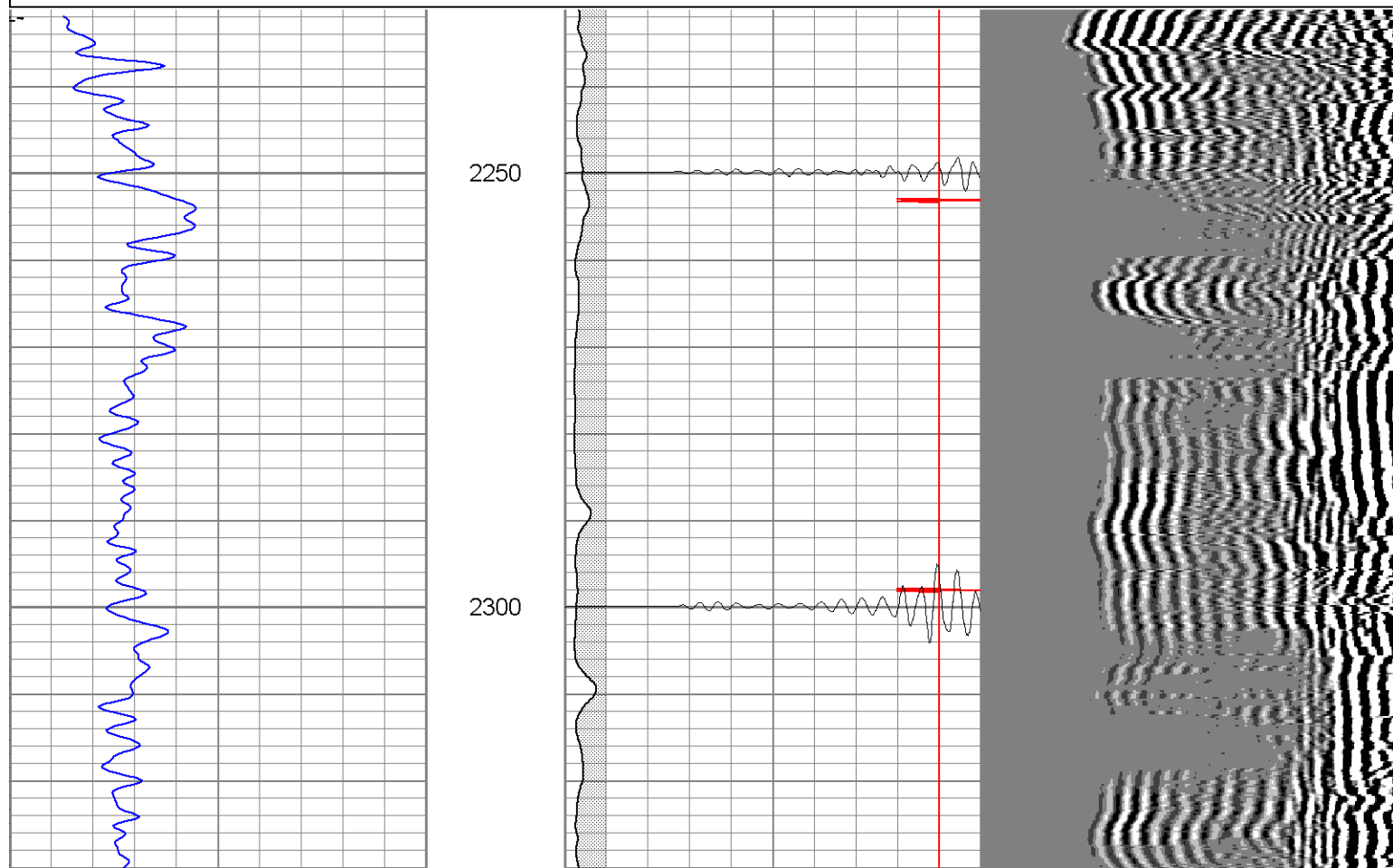
Repeat Section

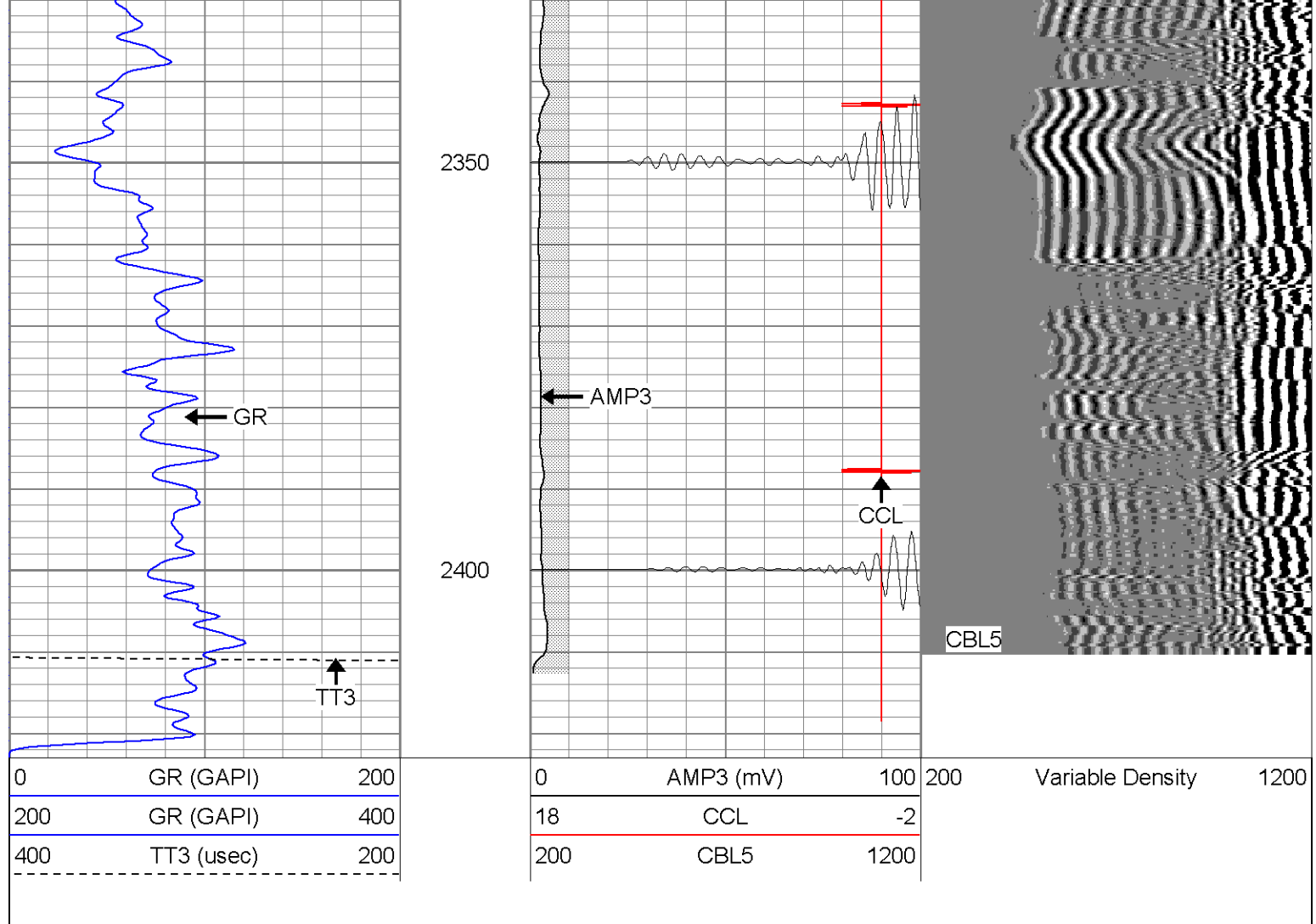
Database File: ac181311306b.db
 Dataset Pathname: pass1
 Presentation Format: cblrt
 Dataset Creation: Fri Nov 03 11:38:48 2006 by Log Open-Cased 060407
 Charted by: Depth in Feet scaled 1:240

0	GR (GAPI)	200
200	GR (GAPI)	400
400	TT3 (usec)	200

0	AMP3 (mV)	100
18	CCL	-2
200	CBL5	1200

200	Variable Density	1200
-----	------------------	------





Calibration Report

Database File: ac181311306b.db
 Dataset Pathname: pass1
 Dataset Creation: Fri Nov 03 11:38:48 2006 by Log Open-Cased 060407

Gamma Ray Calibration Report

Serial Number: Titan2.75
 Tool Model: 2.75
 Performed: Fri Nov 03 07:30:36 2006

Calibrator Value: 200.0 GAPI

Background Reading: 40.0 cps
 Calibrator Reading: 240.0 cps

Sensitivity: 1.1000 GAPI/cps

Cement Bond Log Calibration Report

Serial Number: Titan4
 Tool Model: 4
 Performed: Fri Nov 03 09:53:10 2006

Depth: 1054.62 ft
 Casing Diameter: 5.5 in

	3' Spacing	5' Spacing	
Signal Zero:	0	1	mV
Calibrated Amplitude:	85	85	mV

V
V

51.3306
0.263125

Sensor	Offset (ft)	Schematic	Description	Len (ft)	OD (in)	Wt (lb)
CHD	20.38		CHD-None (0)	0.75	1.50	5.00
CENT	19.63		CENT-X (2)	3.00	1.69	25.00
WVF5	12.82		CBL-4 (Titan4)	8.15	2.25	110.00
WVF3	11.82					
CENT	8.48		CENT-X (1)	3.00	1.69	25.00
CCL	4.27		CCL-2.75 (Titan2.75)	1.71	2.75	15.00
GR	1.42		GR-2.75 (Titan2.75) Two Point	3.77	2.75	25.00
Dataset: ac181311306b.db: field/well/run1/pass1 Total Length: 20.38 ft Total Weight: 205.00 lb O.D. 2.75 in						