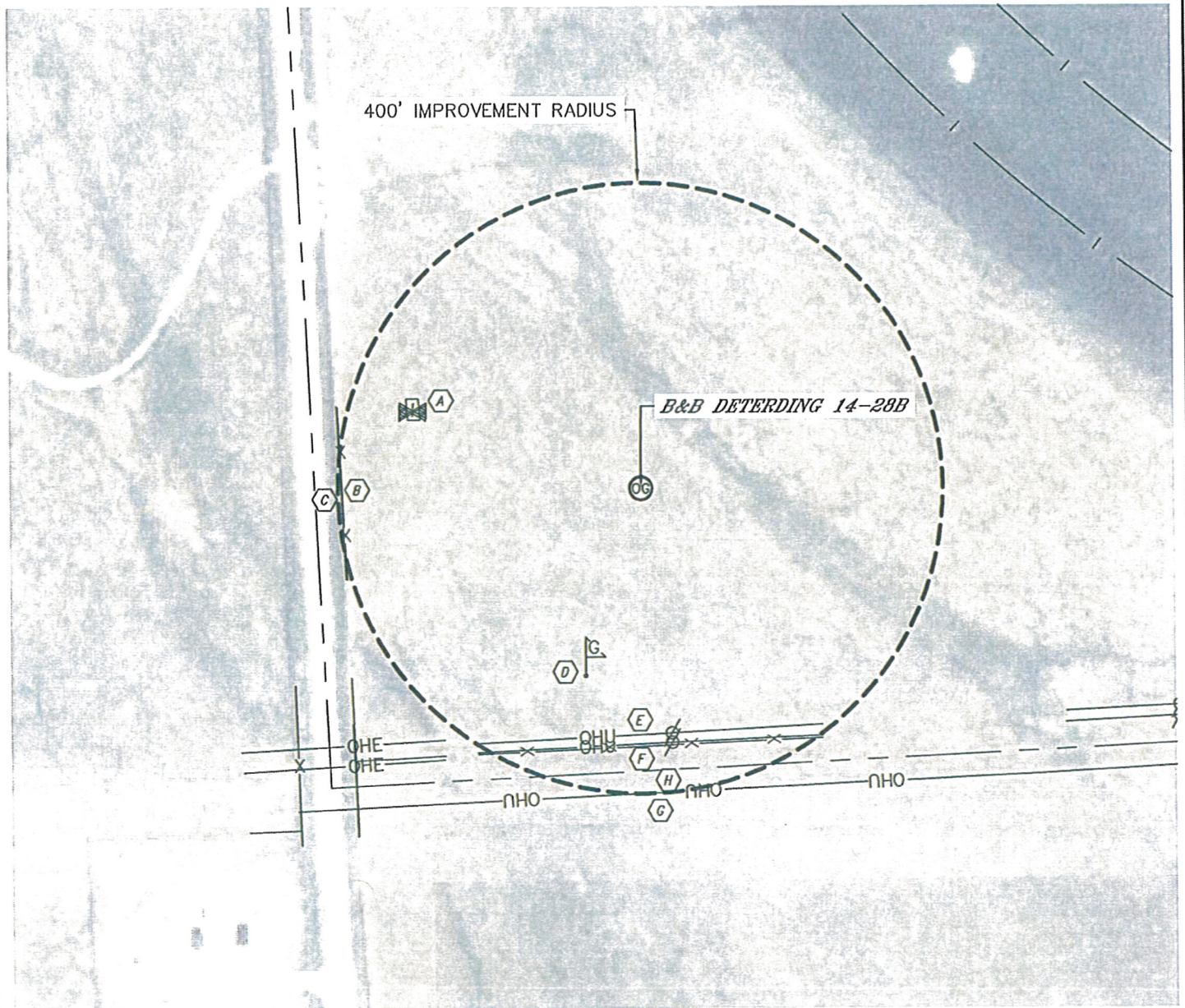


LOCATION DRAWING

SECTION: 28
TOWNSHIP: 1S
RANGE: 44W



IMPROVEMENTS:

- (A) GAS VALVE 317' NORTHWEST
- (B) FENCE 394' WEST
- (C) OVERHEAD UTILITY 395' WEST
- (D) GAS MARKER 256' SOUTHWEST
- (E) OVERHEAD UTILITY 322' SOUTH
- (F) FENCE 338' SOUTH
- (G) OVERHEAD UTILITY 399' SOUTH
- (H) PROPERTY LINE 370' SOUTH

