

Patterson

CEMENT BOND
GAMMA RAY

CompanyXTO Energy Inc.
Well Apache Canyon 35-05
Field Vermejo Coal
County Las Animas
State CO

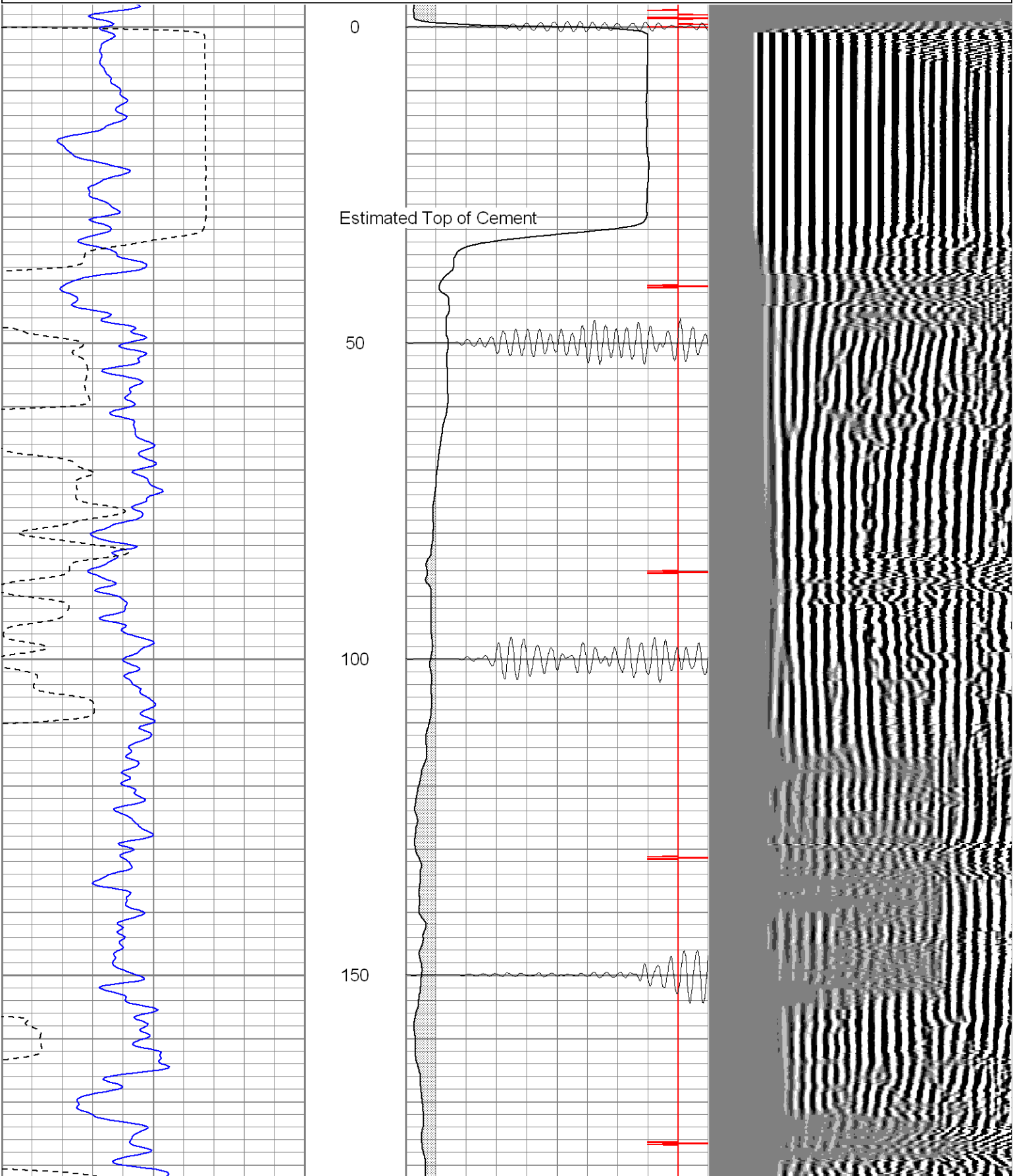
Company XTO Energy Inc.
Well Apache Canyon 35-05
Field Vermejo Coal
County Las Animas State CO

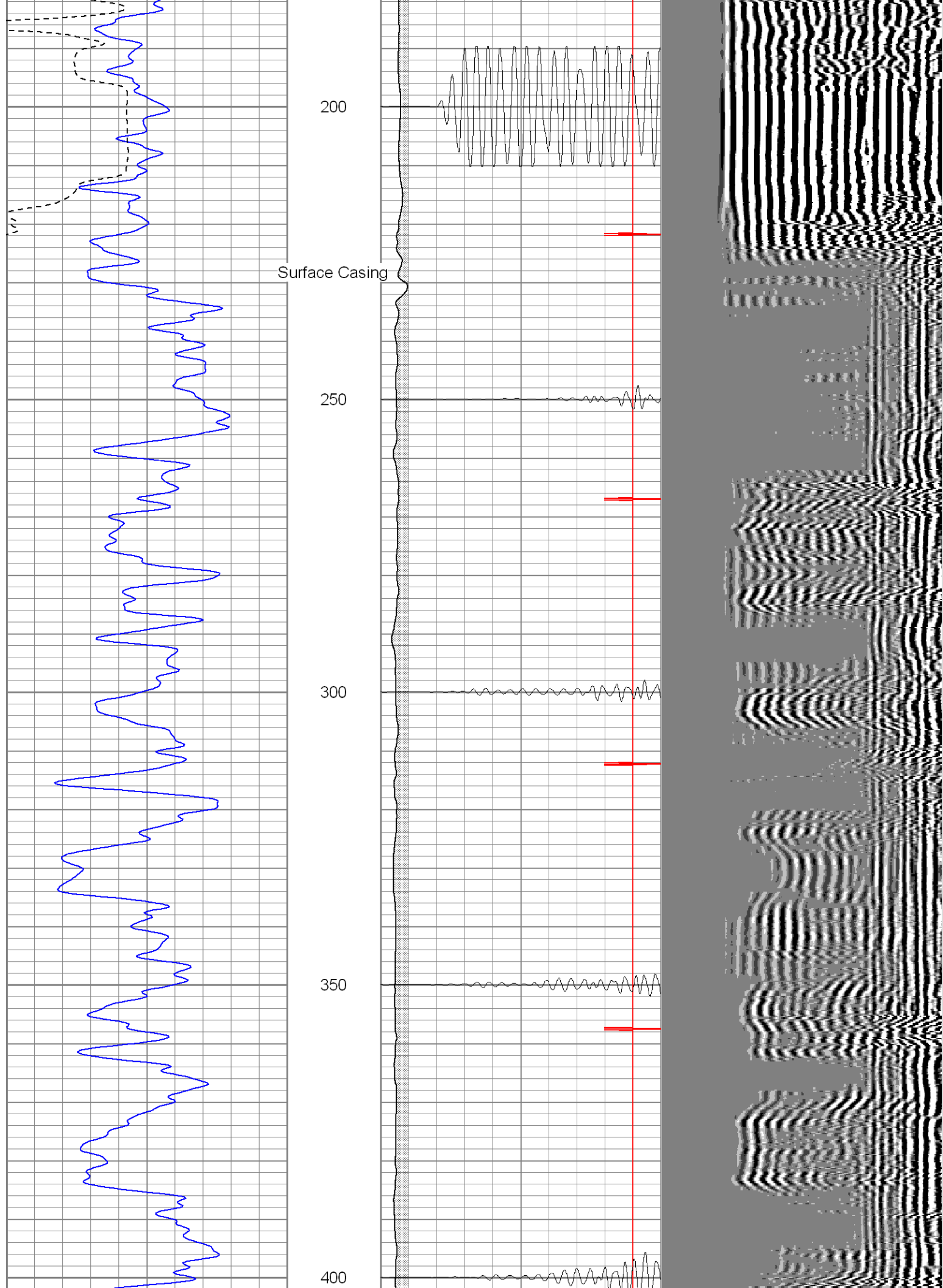
Location:	API # : 05 071 08542				Other Services
	1791' FNL & 787' FWL				
	SEC 35 TWP 33S RGE 67W				
	Permanent Datum	Ground Level	Elevation	7109'	
	Log Measured From	Ground Level		K.B. 7109'	
	Drilling Measured From	Ground Level		D.F. 7109'	
				G.L. 7109'	

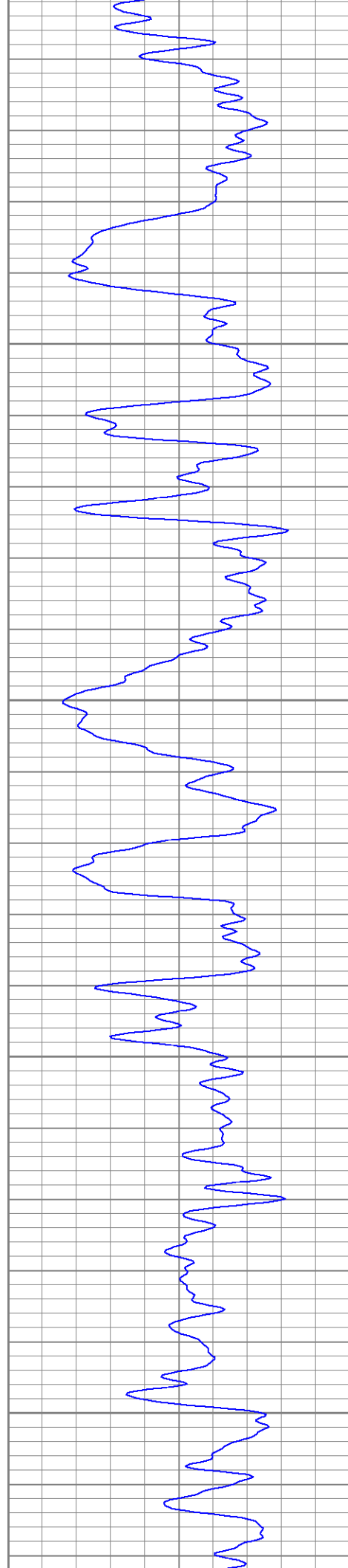
Date	1/5/06									
Run Number	one									
Depth Driller	1825'									
Depth Logger	1727'									
Bottom Logged Interval	1723'									
Top Log Interval	Surf.									
Open Hole Size	7 7/8"									
Type Fluid	Water									
Density / Viscosity	///									
Max. Recorded Temp.	///									
Estimated Cement Top	30'									
Time Well Ready	8:10									
Time Logger on Bottom	8:15									
Equipment Number	T244									
Location	Trinidad									
Recorded By	Morley									
Witnessed By	Mr. Olmstead									
Borehole Record					Tubing Record					
Run Number	Bit	From	To	Size	Weight	From	To			
Casing Record		Size		Wgt/Ft		Top	Bottom			
Surface String		8 5/8"				00	228'			
Prot. String										
Production String		5 1/2"				00	NA			
Liner										

Database File: ac35-05b010506.db
Dataset Pathname: pass3
Presentation Format: cblrt
Dataset Creation: Thu Jan 05 08:22:10 2006 by Log Warrior 7.0 STD Cas
Charted by: Depth in Feet scaled 1:240

0	GR (GAPI)	200	0	AMP3 (mV)	100	200	Variable Density	1200
400	TT3 (usec)	200	18	CCL	-2			
			200	CBL5	1200			





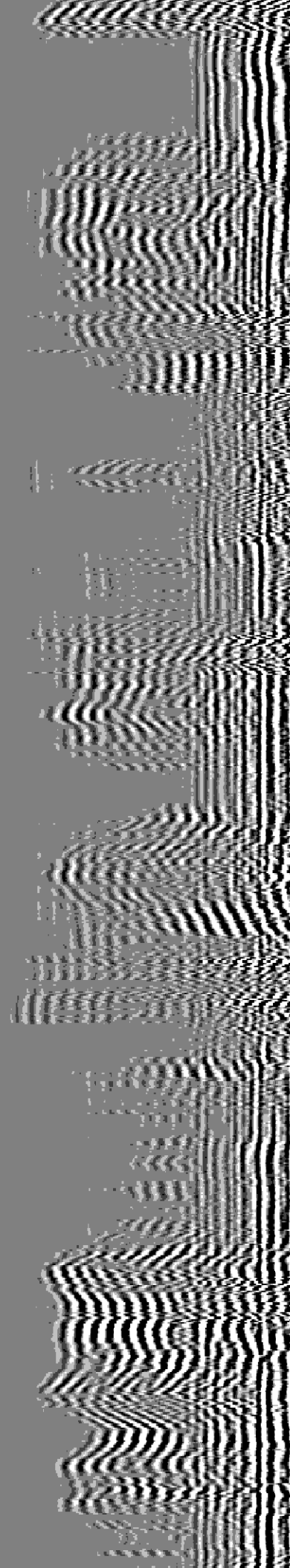
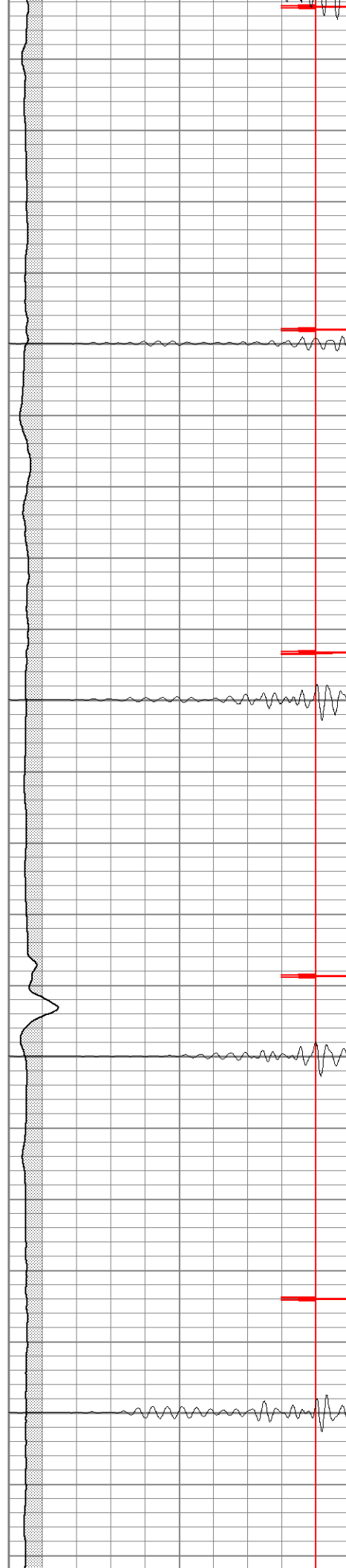


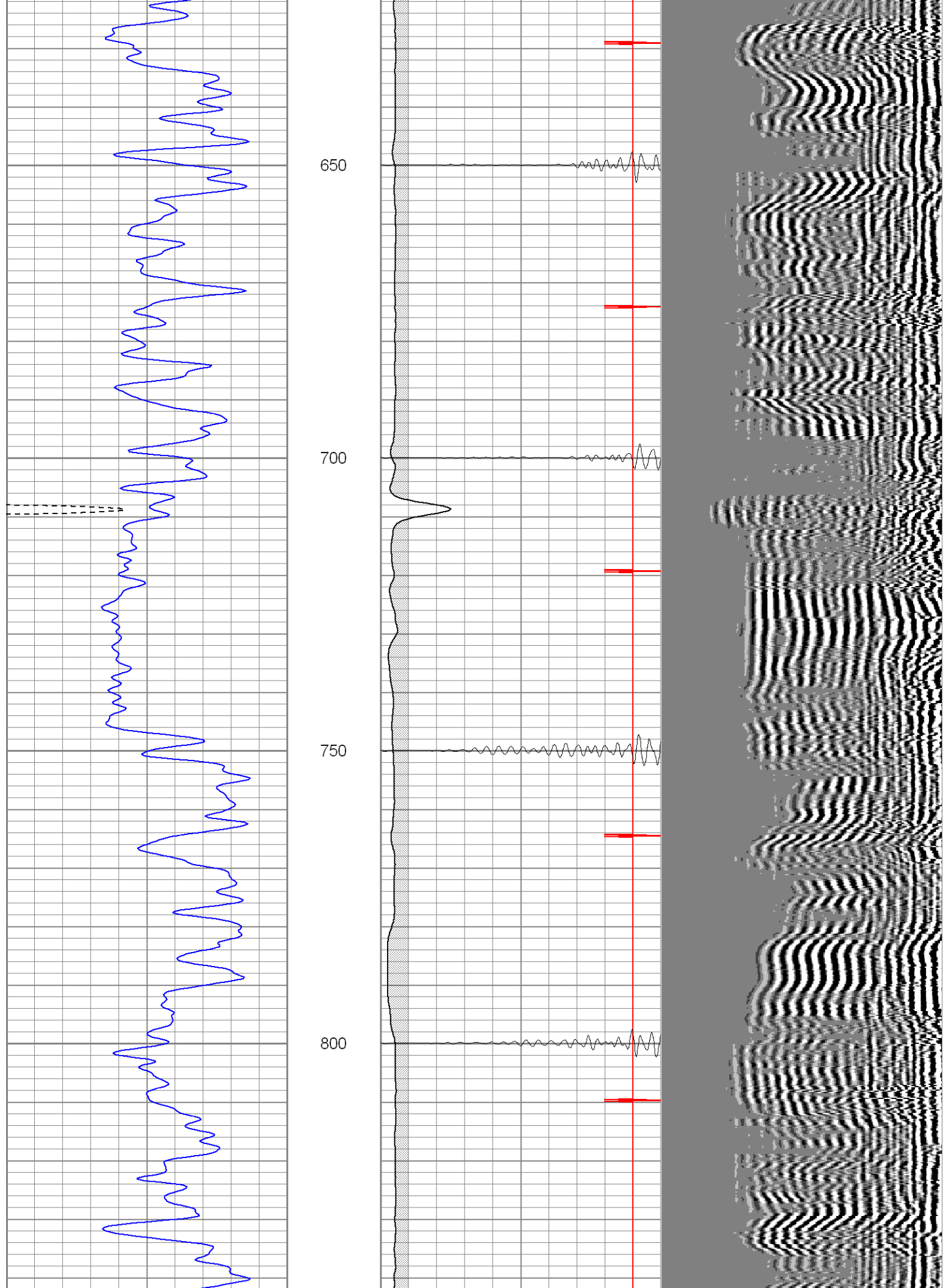
450

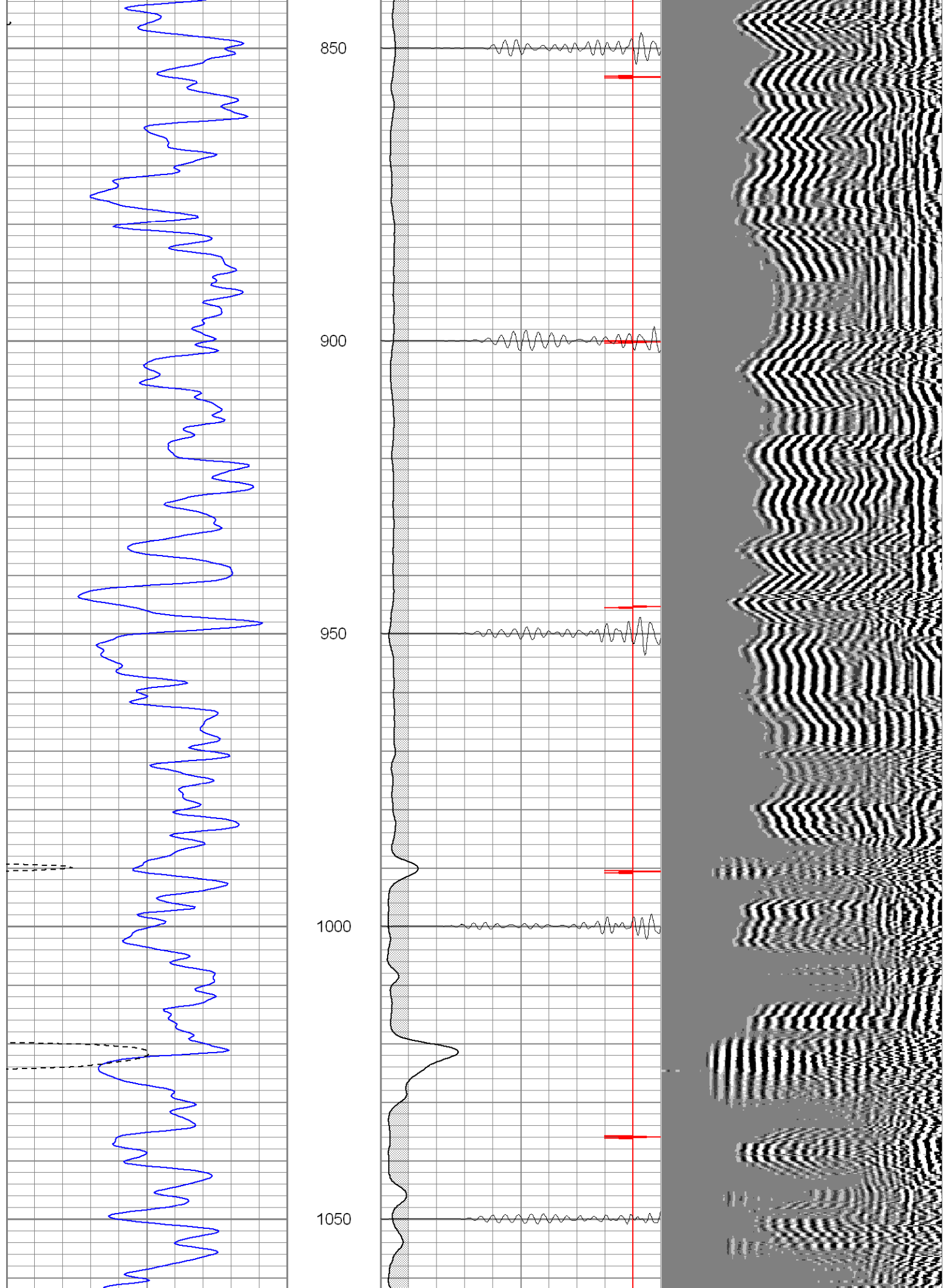
500

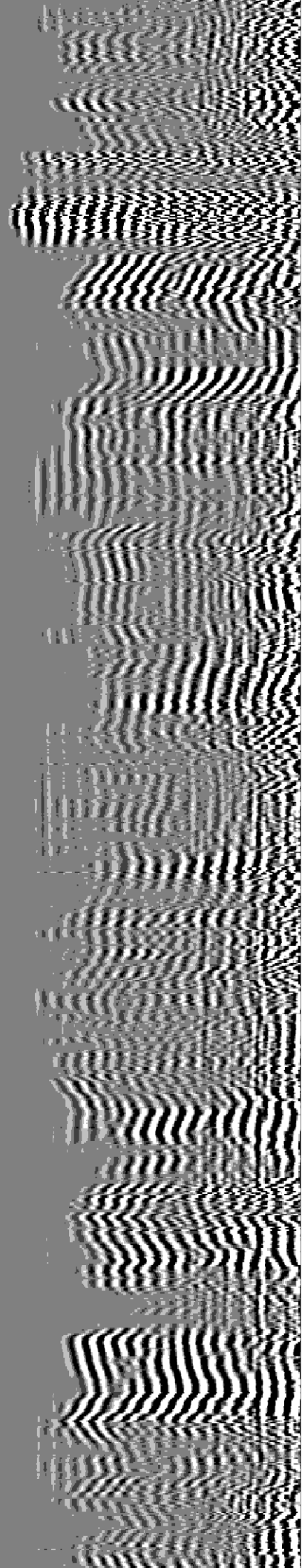
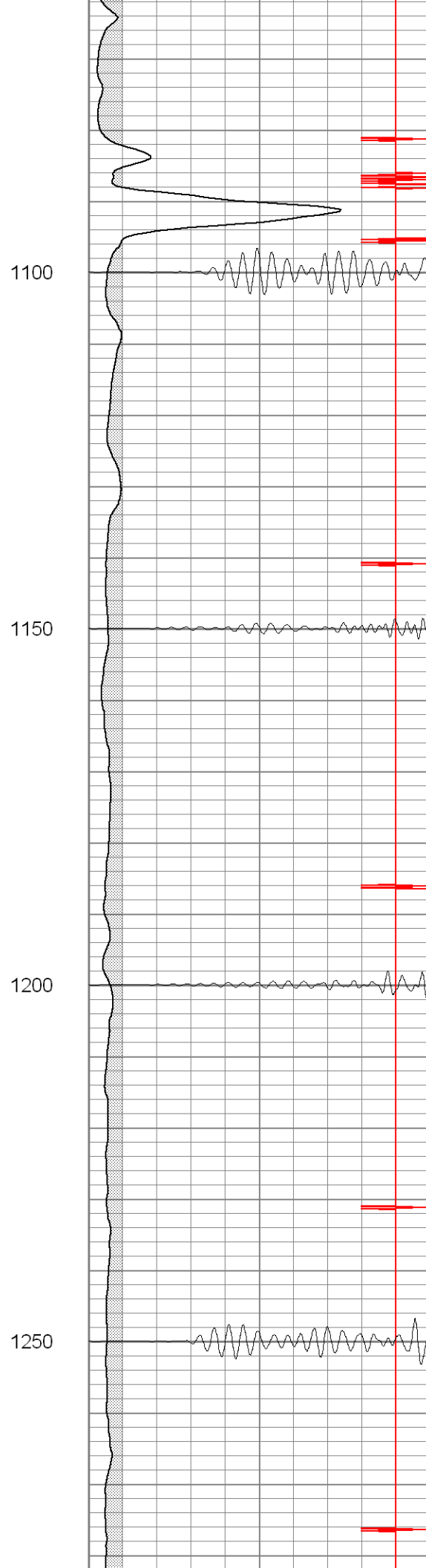
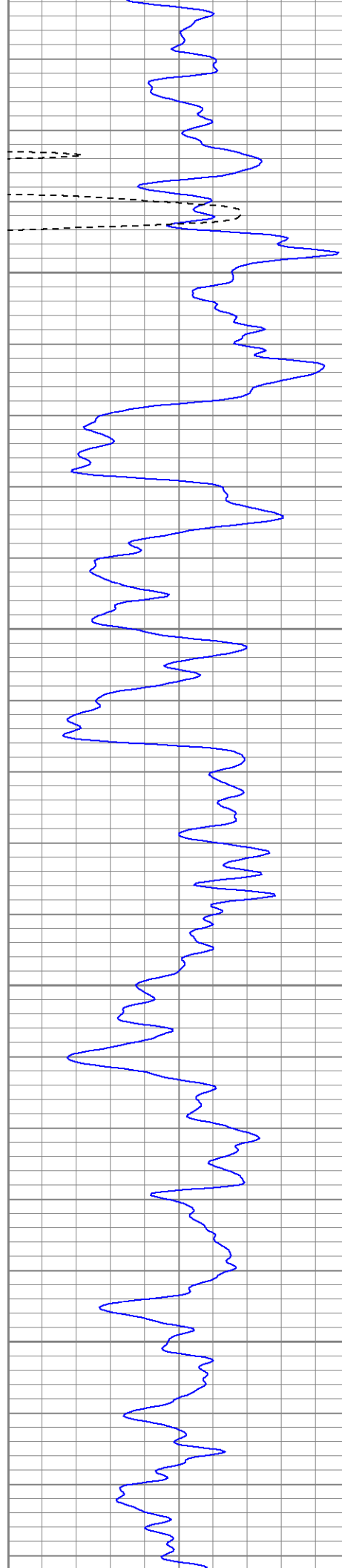
550

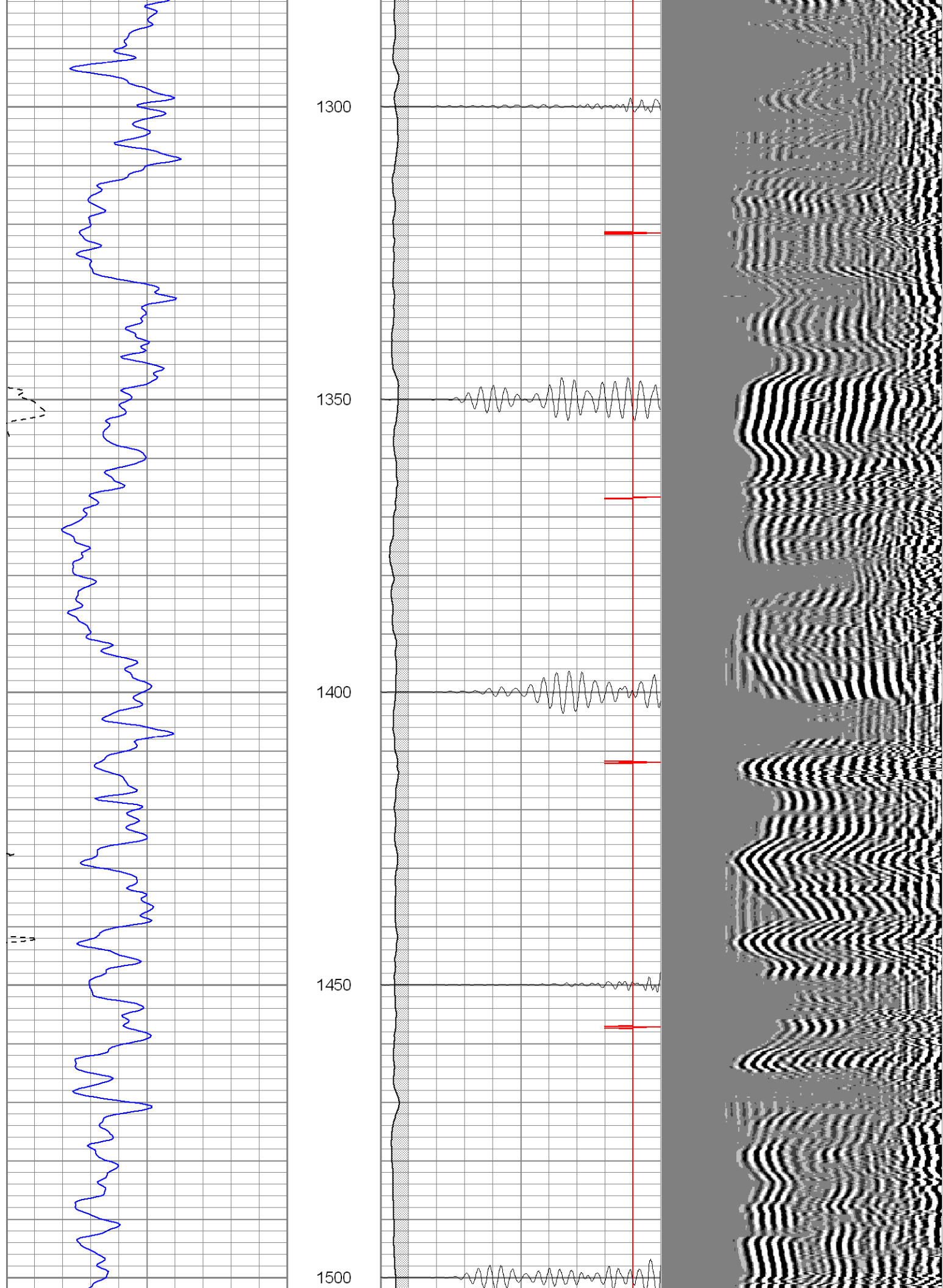
600

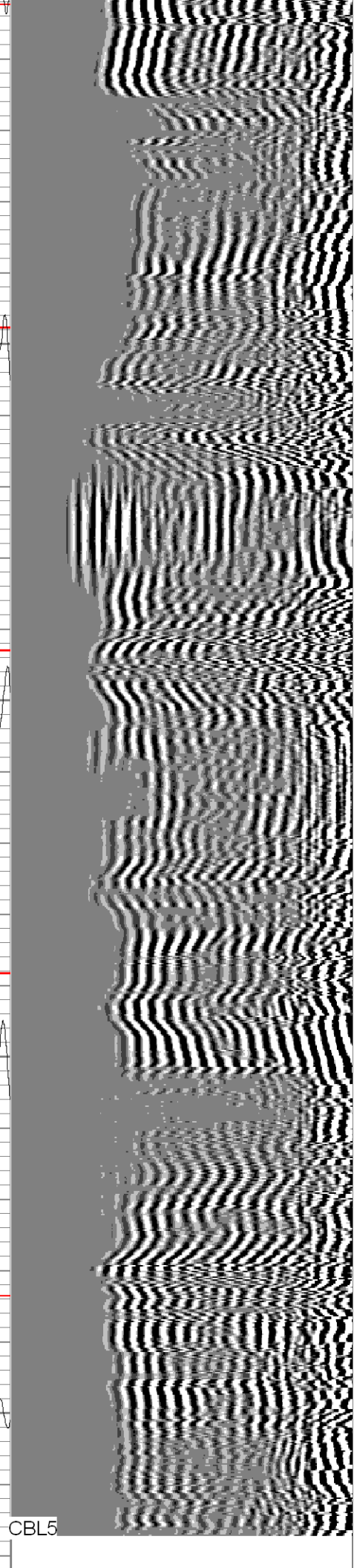
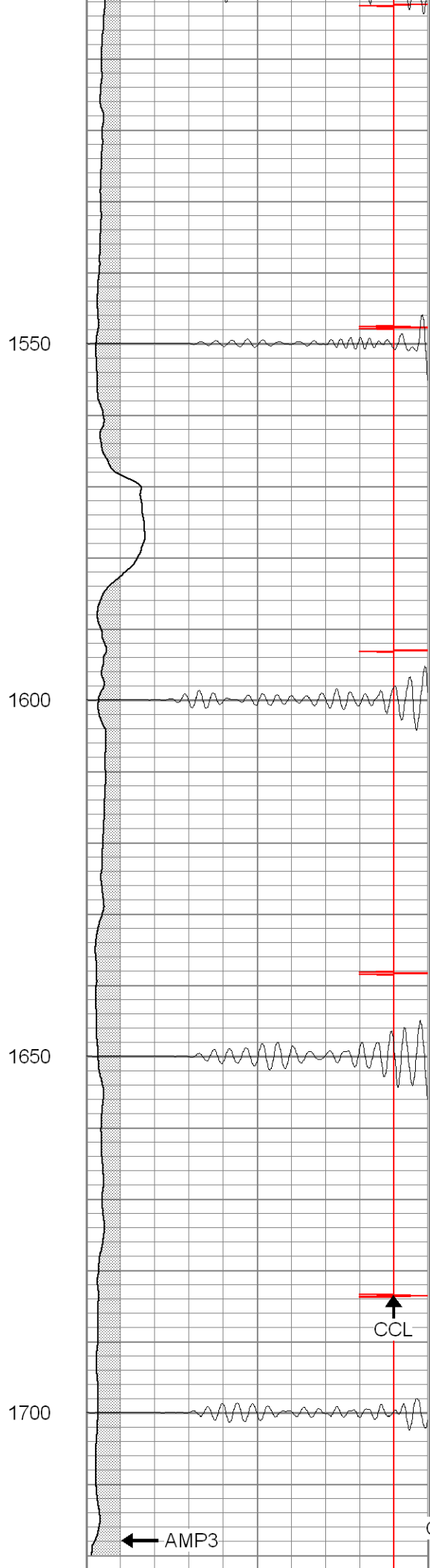
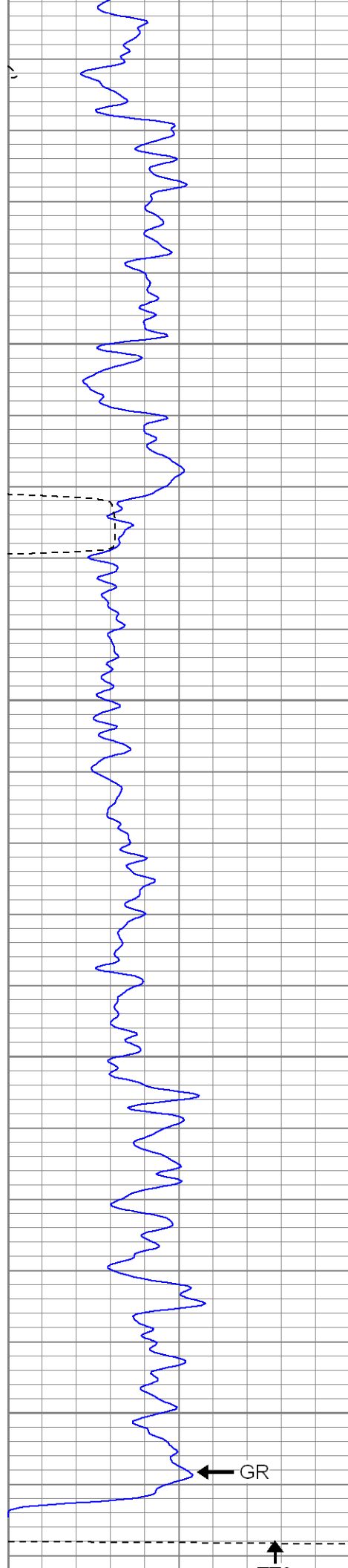












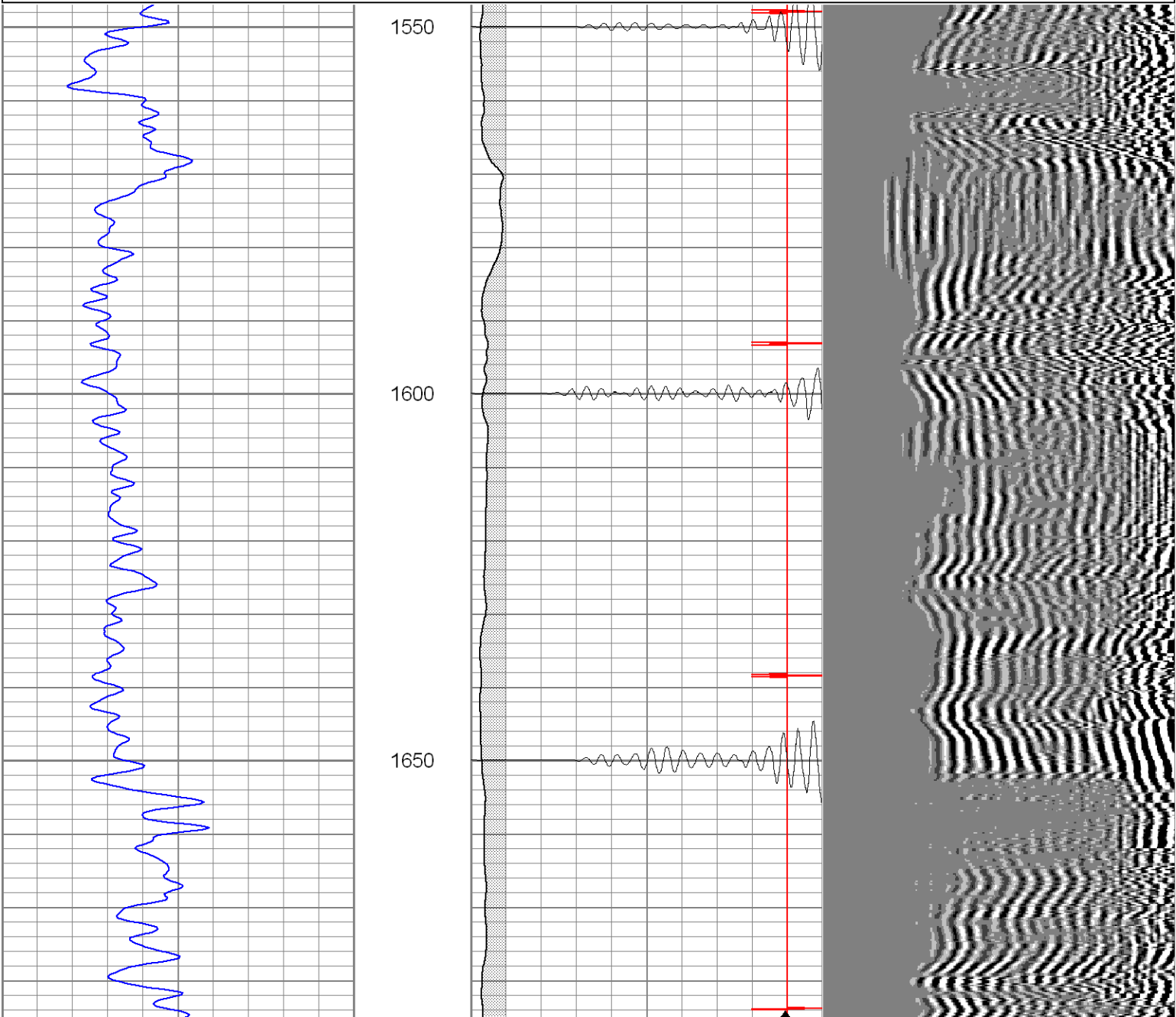
TT3								
0	GR (GAPI)	200	0	AMP3 (mV)	100	200	Variable Density	1200
400	TT3 (usec)	200	18	CCL	-2			
			200	CBL5	1200			

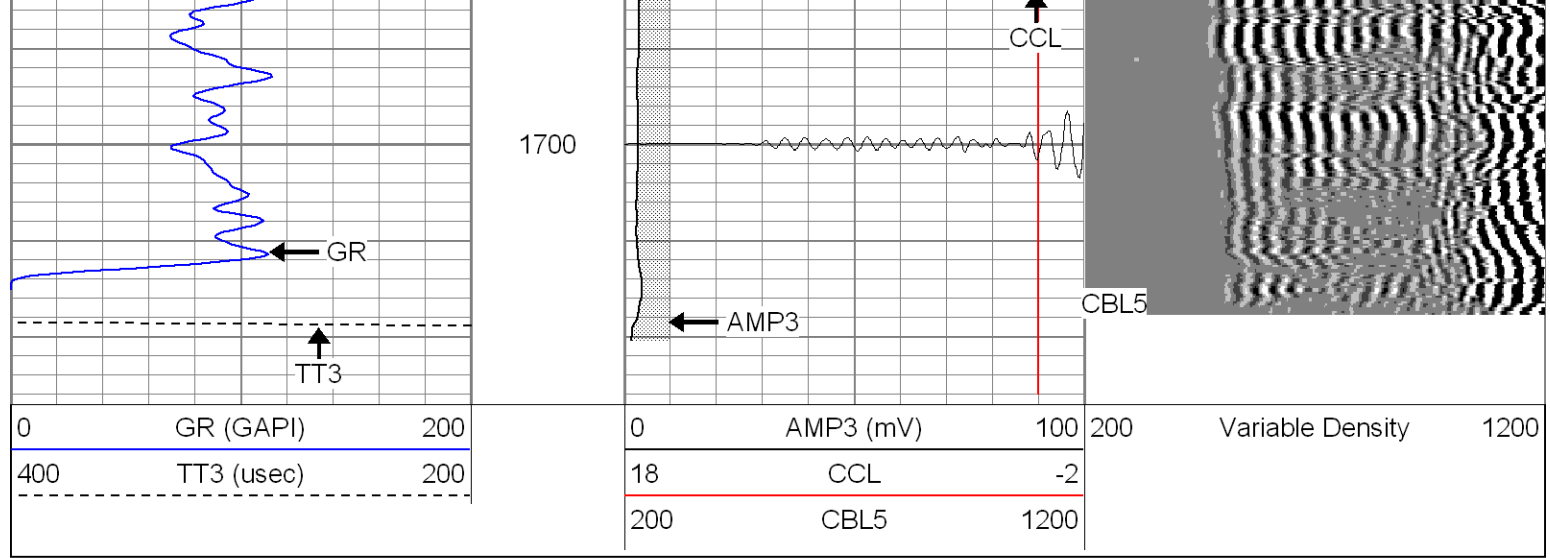
Patterson

Repeat Section

Database File: ac35-05b010506.db
Dataset Pathname: pass1.1
Presentation Format: cblrt
Dataset Creation: Thu Jan 05 08:19:19 2006 by Calc Warrior 7.0 STD Cas
Charted by: Depth in Feet scaled 1:240

GR (GAPI)			AMP3 (mV)			Variable Density		
0		200	0		100	200		1200
400	TT3 (usec)	200	18	CCL	-2			
			200	CBL5	1200			





Cement Bond Log Calibration Report				
Serial Number:	Titan5			
Tool Model:	2			
Performed:	Wed Jan 04 09:12:51 2006			
Depth:	0	ft		
Casing Diameter:	0	in		
	3' Spacing	5' Spacing		
Signal Zero:	0	0	mV	
Calibrated Amplitude:	85	85	mV	
Reading at Signal Zero:	-0.02	0	V	
Reading in Free Pipe:	1	0.9	V	
Gain:	83.3333	94.4444		
Offset:	1.66667	0		

Gamma Ray Calibration Report				
Serial Number:	Titan5			
Tool Model:	T2			
Performed:	Tue Dec 27 12:56:41 2005			
Calibrator Value:	1.0	GAPI		
Background Reading:	0.0	cps		
Calibrator Reading:	1.0	cps		
Sensitivity:	1.2000	GAPI/cps		