



**SUPERIOR**  
Black Lick, Pa.  
Mercer, Pa.  
Wooster, Oh.  
Cleveland, Ok.  
Trinidad, Co.

## CEMENT BOND LOG

Company XTO Energy Inc.  
Well Golden Eagle 18-15  
Field Purgatorie River  
County Las Animas  
State CO

Company XTO Energy Inc.

Well Golden Eagle 18-15

Field Purgatorie River

County Las Animas State CO

Location: API #: 05 071 08799 00

448' FSL & 1746' FEL

SEC 18 TWP 33S RGE 67W

Permanent Datum Ground Level Elevation 7441'  
Log Measured From Ground Level  
Drilling Measured From Ground Level

Elevation  
K.B. -----  
D.F. -----  
G.L. 7441

Date 6-4-07

Run Number Three

Depth Driller 2250'

Depth Logger 1126'

Bottom Logged Interval 1124'

Top Log Interval Surface

Open Hole Size 7 7/8"

Type Fluid Water

Density / Viscosity ///

Max. Recorded Temp. ///

Estimated Cement Top 956'

Time Well Ready ROA

Time Logger on Bottom 8:30AM

Equipment Number T0698

Location Trinidad

Recorded By J. Sisneros

Witnessed By Mr. Mike Polley

Run Number

Bit From To

Size Weight From To

Size Wgt/Ft Top Bottom

Surface String 8 5/8"

Prot. String

Production String 5.5"

Liner

<<< Fold Here >>>

All interpretations are opinions based on inferences from electrical or other measurements and we cannot and do not guarantee the accuracy or correctness of any interpretation, and we shall not, except in the case of gross or willful negligence on our part, be liable or responsible for any loss, costs, damages, or expenses incurred or sustained by anyone resulting from any interpretation made by any of our officers, agents or employees. These interpretations are also subject to our general terms and conditions set out in our current Price Schedule.

### Comments

Rancho Escondido, left at TEE PEE, dead end on location



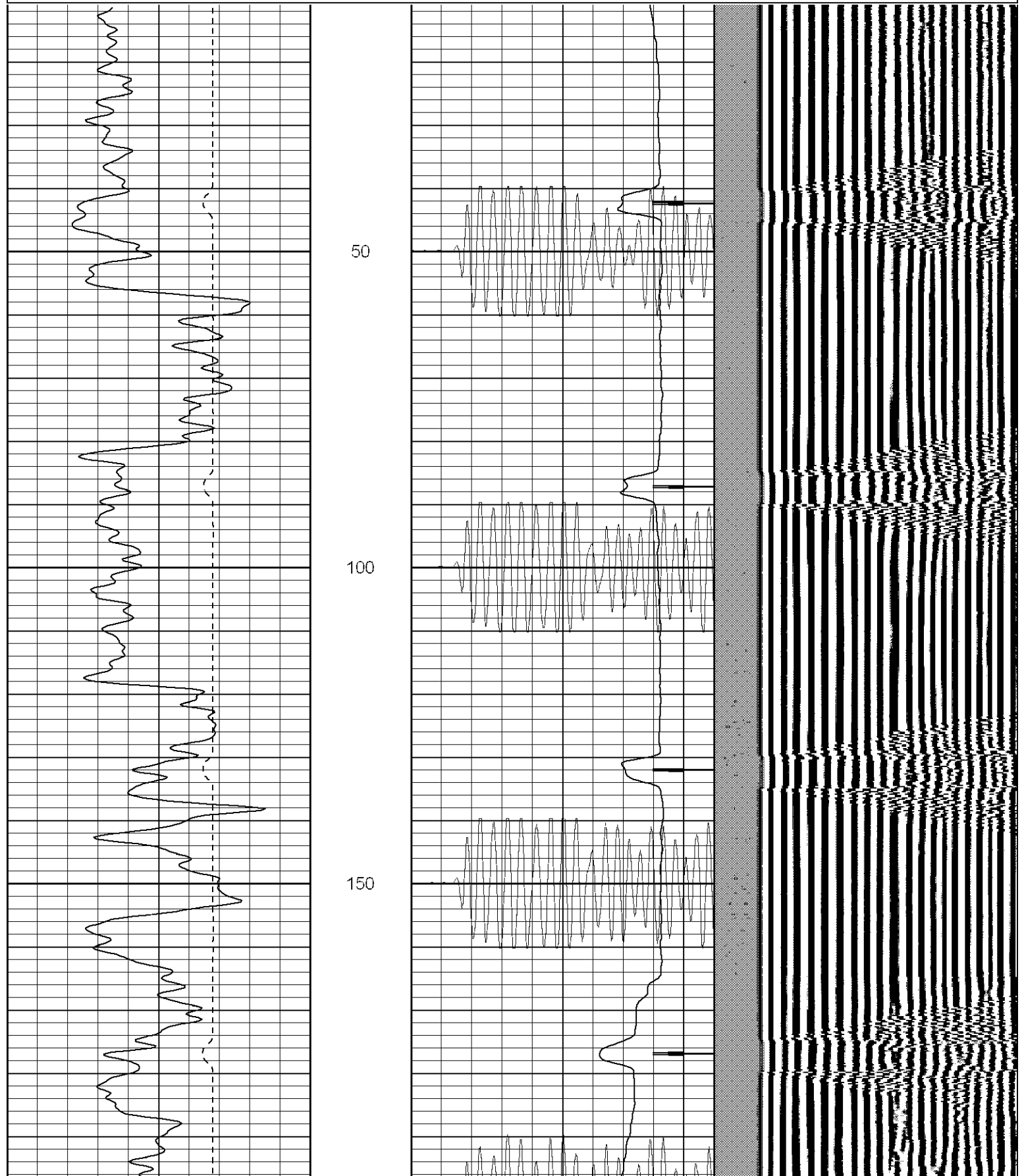
**SUPERIOR**

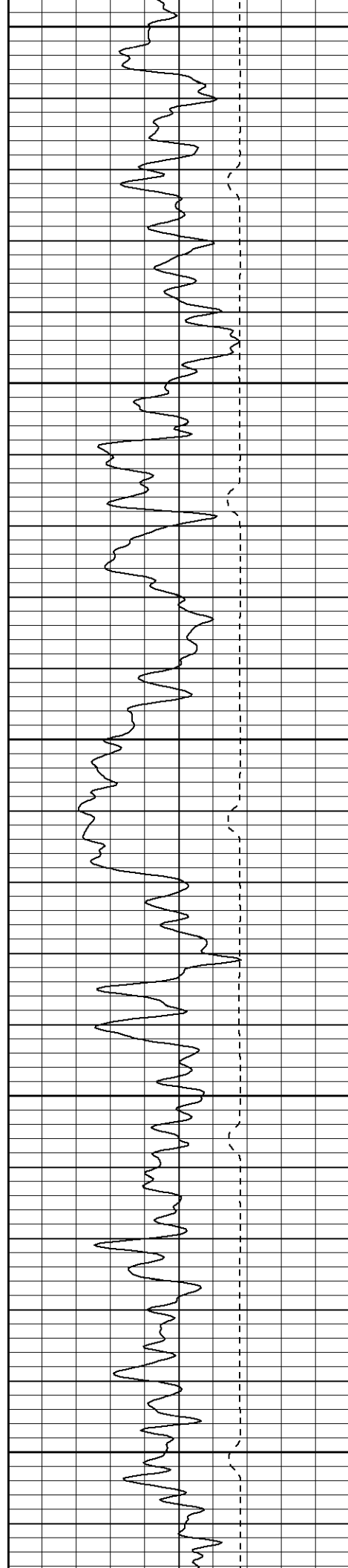
Black Lick, Pa.  
Mercer, Pa.  
Wooster, Oh.  
Cleveland, Ok.  
Trinidad, Co.

# Main Pass

Database File: ge18156407b.db  
Dataset Pathname: pass2.1  
Presentation Format: cblrt  
Dataset Creation: Mon Jun 04 09:17:56 2007 by Calc Open-Cased 061129  
Charted by: Depth in Feet scaled 1:240

0	GR (GAPI)	200	0	AMP3 (mV)	100	200	Variable Density	1200
400	TT3 (usec)	200	18	CCL	-2			
-----			200	CBL5	1200			





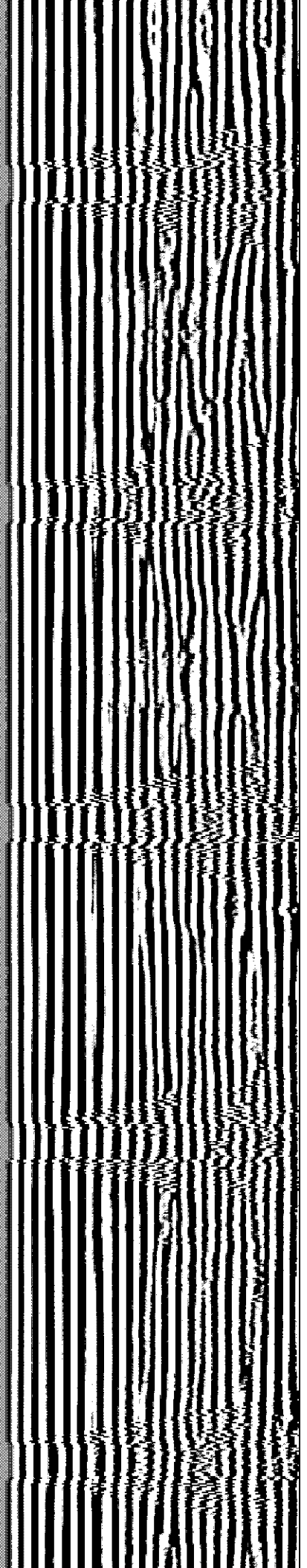
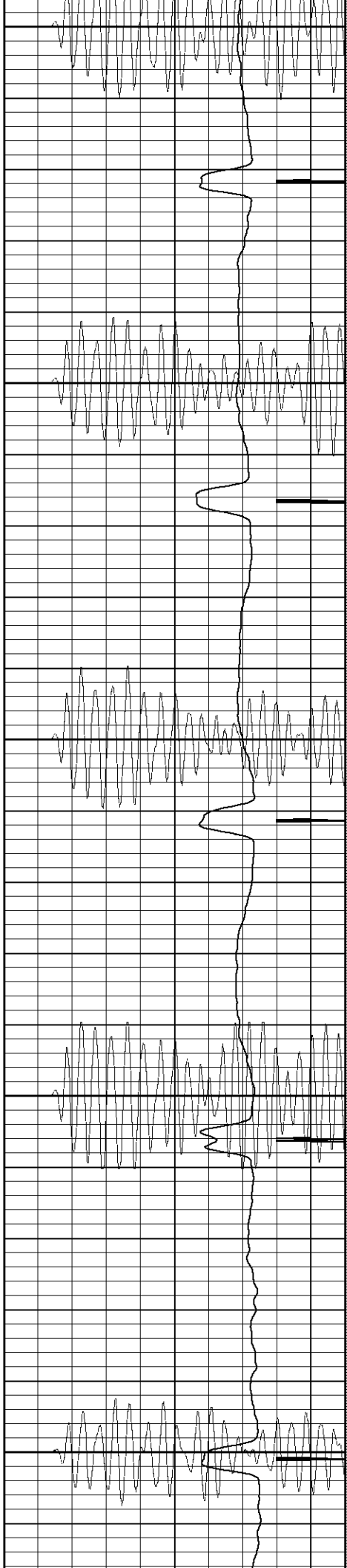
200

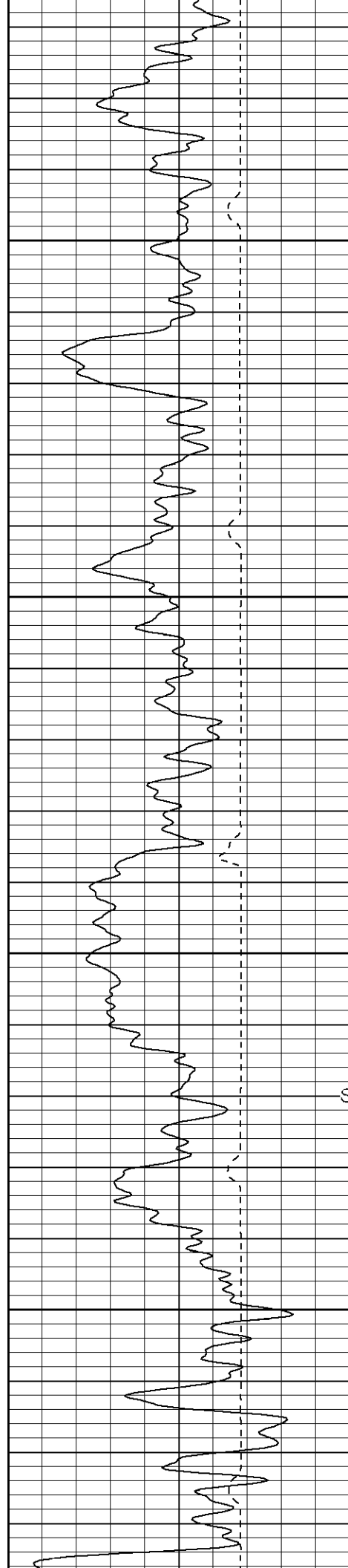
250

300

350

400





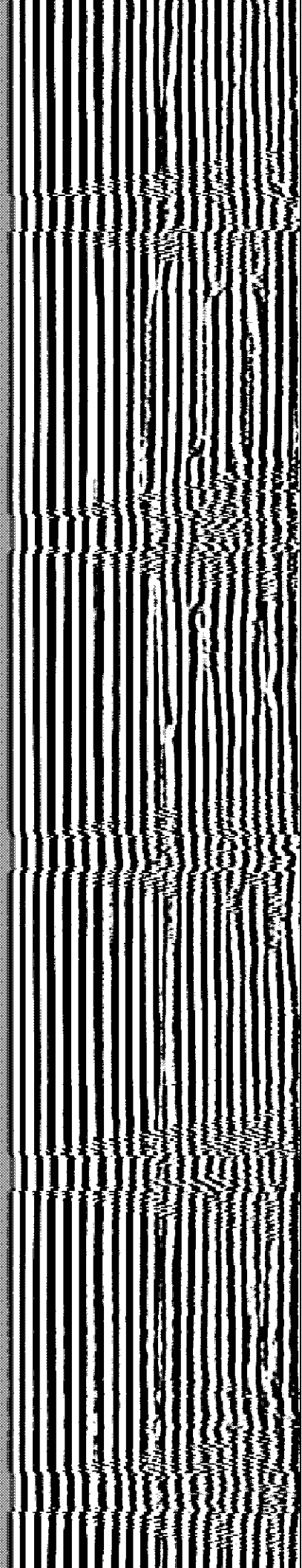
450

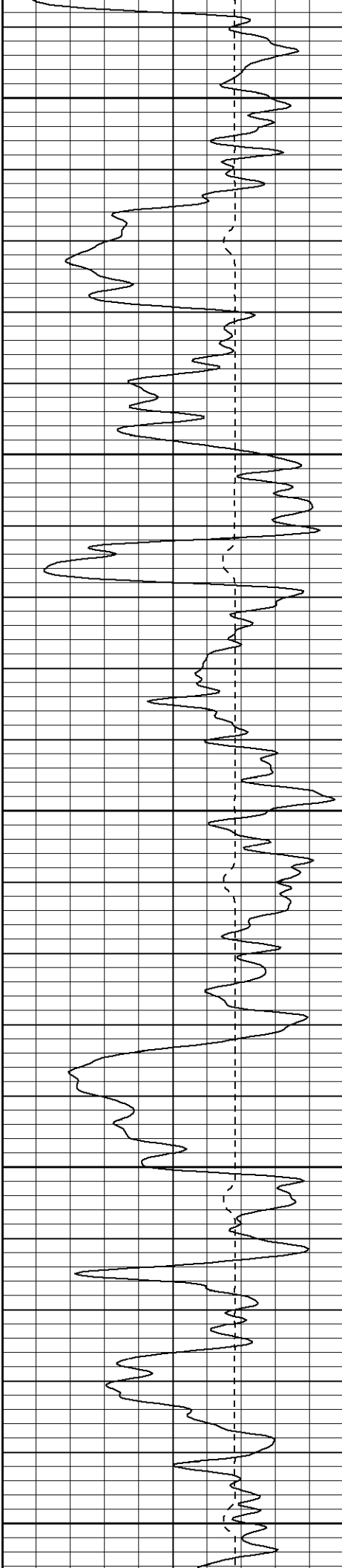
500

550

Surface Casing

600





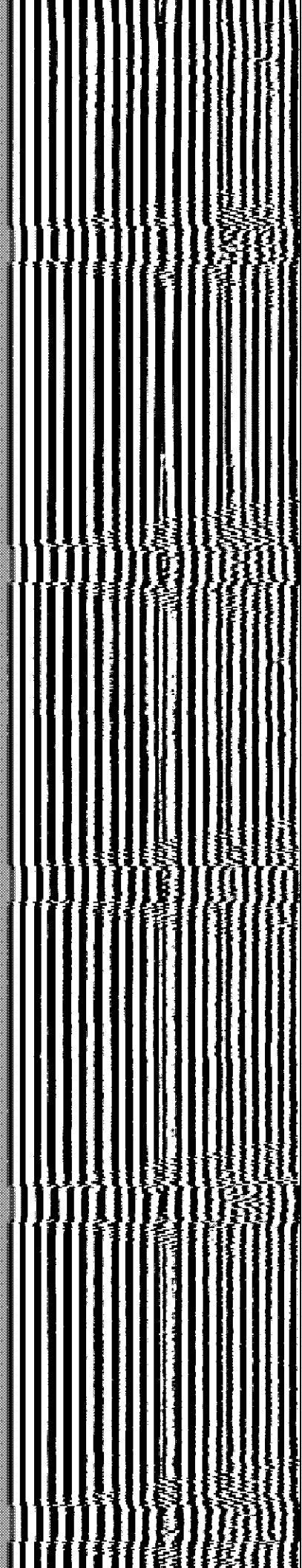
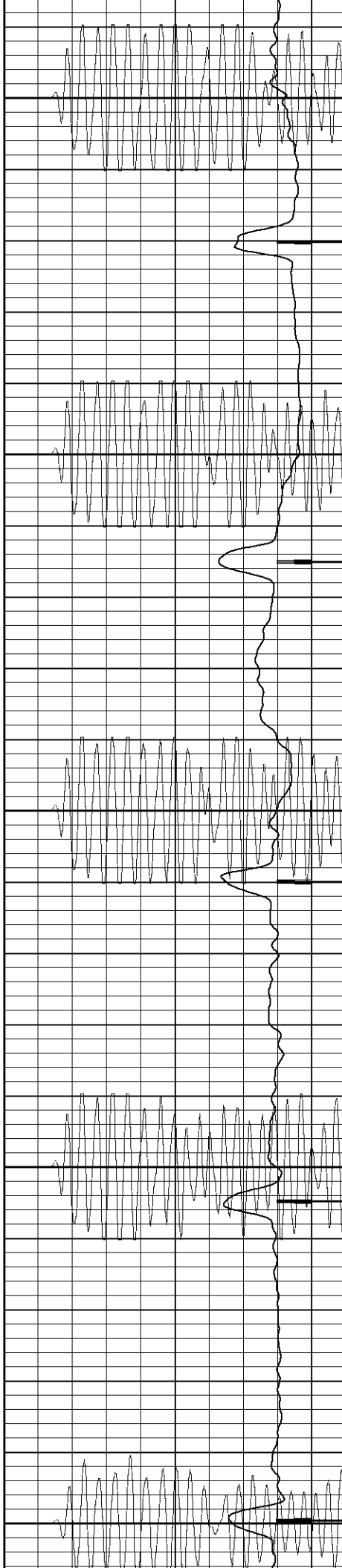
650

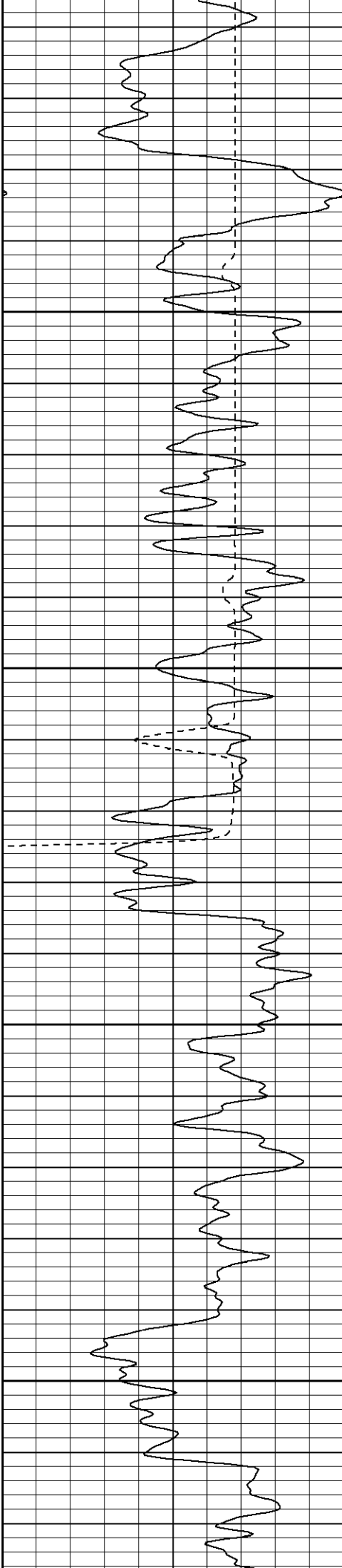
700

750

800

850





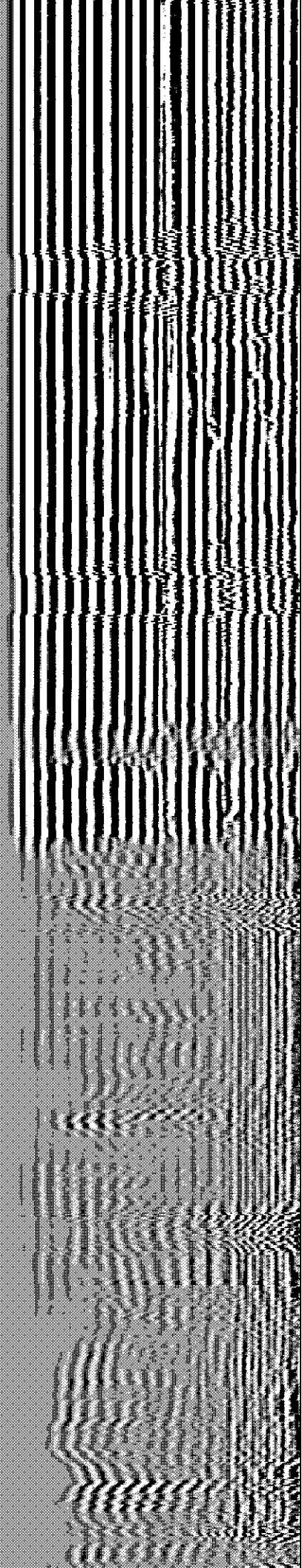
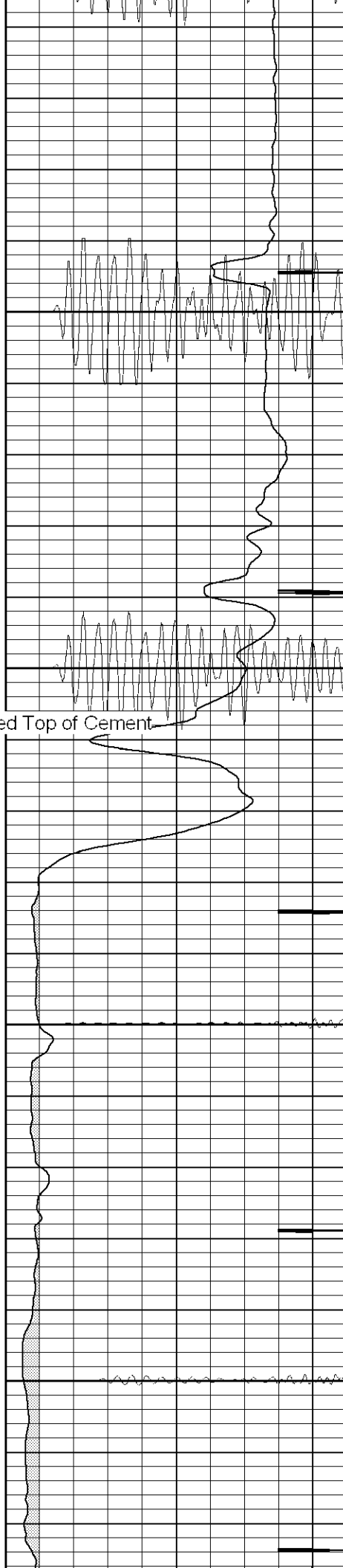
900

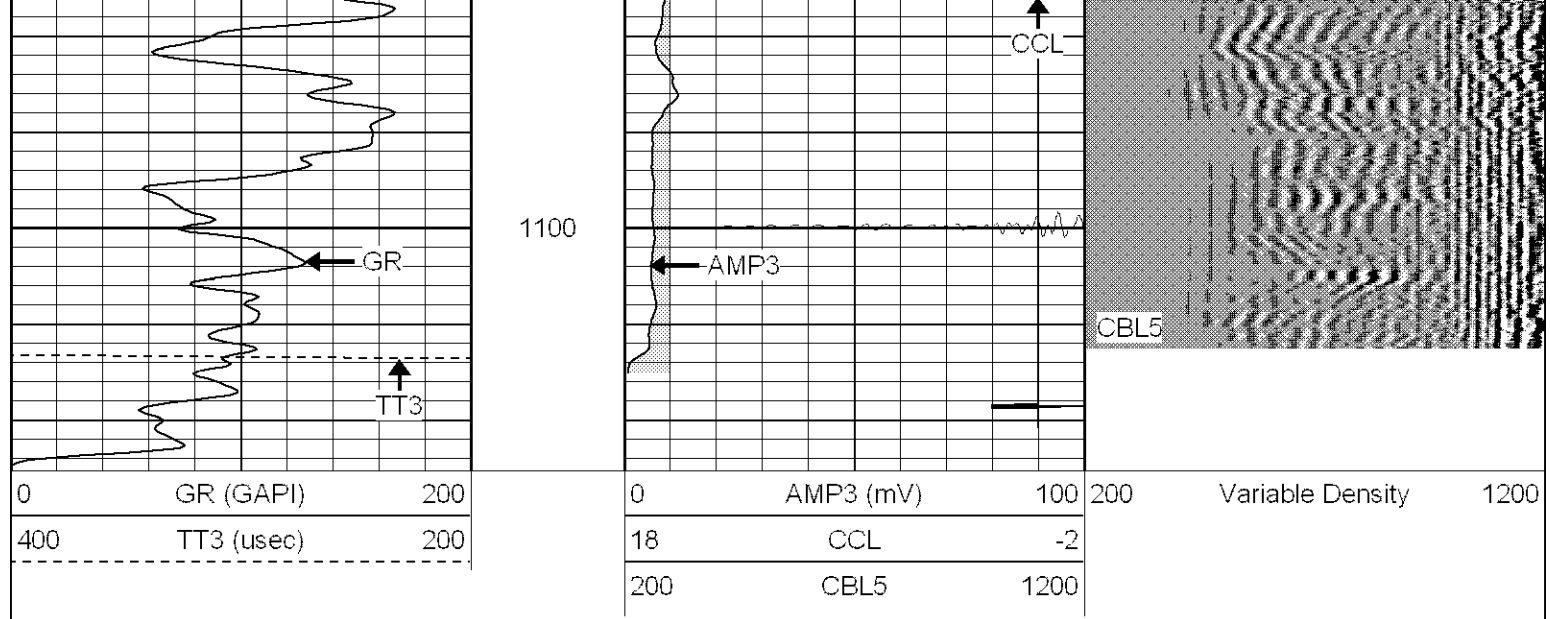
950

Estimated Top of Cement

1000

1050





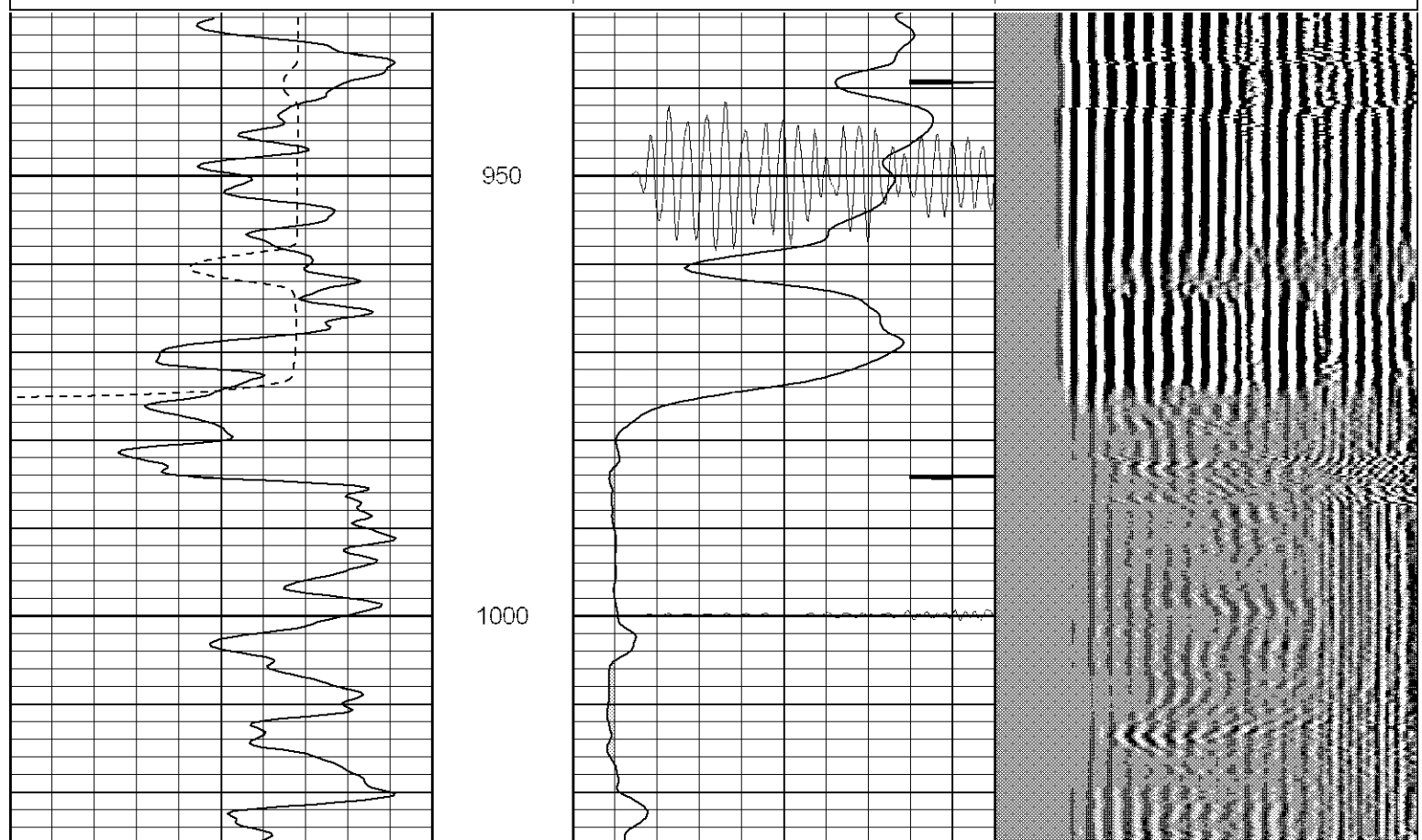
**SUPERIOR**

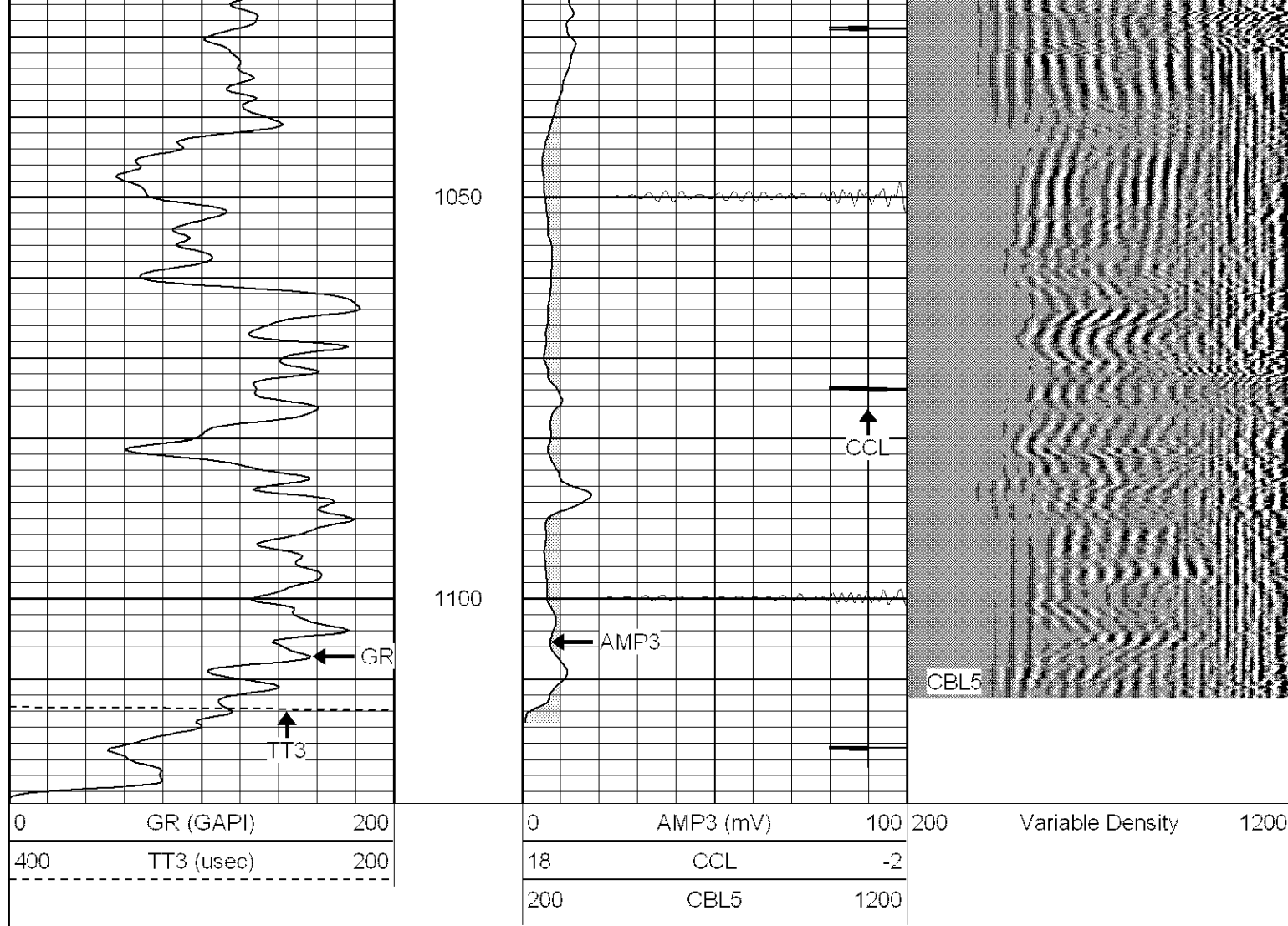
Black Lick, Pa.  
 Mercer, Pa.  
 Wooster, Oh.  
 Cleveland, Ok.  
 Trinidad, Co.

# Repeat Section

Database File: ge18156407b.db  
 Dataset Pathname: pass1  
 Presentation Format: cblrt  
 Dataset Creation: Mon Jun 04 08:34:03 2007 by Log Open-Cased 061129  
 Charted by: Depth in Feet scaled 1:240

0	GR (GAPI)	200	0	AMP3 (mV)	100	200	Variable Density	1200
400	TT3 (usec)	200	18	CCL	-2			
			200	CBL5	1200			





### Calibration Report

Database File: ge18156407b.db  
 Dataset Pathname: pass1  
 Dataset Creation: Mon Jun 04 08:34:03 2007 by Log Open-Cased 061129

### Gamma Ray Calibration Report

Serial Number: 2.75  
 Tool Model: T3  
 Performed: Mon May 07 12:22:29 2007

Calibrator Value: 1.0 GAPI

Background Reading: 0.0 cps  
 Calibrator Reading: 1.0 cps

Sensitivity: 1.1500 GAPI/cps

### Cement Bond Log Calibration Report

Serial Number: Titan4  
 Tool Model: T4  
 Performed: Tue May 29 09:38:35 2007

Depth: 74.8132 ft  
 Casing Diameter: 5.5 in

3' Spacing 5' Spacing

Signal Zero: 0 0 mV



Calibrated Amplitude:	85	71.921	mV
Reading at Signal Zero:	0.0239014	0.020166	V
Reading in Free Pipe:	1.35	1.63755	V
Gain:	64.0978	44.4675	
Offset:	1	-0.896733	

Sensor	Offset (ft)	Schematic	Description	Len (ft)	OD (in)	Wt (lb)
			CHD-None (0)	0.75	1.50	5.00
			CENT-X (2)	3.00	1.69	25.00
WVF5	12.82					
WVF3	11.82		CBL-T4 (Titan4)	8.15	2.25	110.00
			CENT-X (1)	3.00	1.69	25.00
CCL	4.27		CCL-T3 (2.75)	1.71	2.75	15.00
GR	1.42		GR-T3 (2.75)	3.77	2.75	25.00
Dataset: ge18156407b.db: field/well/run1/pass1 Total Length: 20.38 ft Total Weight: 205.00 lb O.D. 2.75 in						