

# CEMENT BOND GAMMA RAY

Company El Paso E&P Company, L.P.

Well VPR"C"-142

Field Purgatorie River

County Las Animas State CO

Location: AP| #: 05 071 09062 00

1366' FNL &amp; 1586' FWL

SEC 6	TWP 35S	RGE 66W
-------	---------	---------

Permanent Datum	Ground Level	Elevation	7373
Log Measured From	Ground Level		

Drilling Measured From Ground Level

Elevation

K.B. \_\_\_\_\_

D.F. \_\_\_\_\_

G.L. 7373'

Drilling Measured From Ground

	1/30/07
--	---------

one	
1000	

1835

1831'	
-------	--

Suff.	7 7 10"
-------	---------

1.10	
water	

	///
--	-----

	1201
	201

	ROA
--	-----

m	2:20
---	------

	1244
--	------

Illinda	
Worley	

--	--

### Whole Record

	11011	10
--	-------	----



Size	$\nu$
1	1
2	2
3	3
4	4
5	5
6	6
7	7
8	8
9	9
10	10
11	11
12	12
13	13
14	14
15	15
16	16
17	17
18	18
19	19
20	20
21	21
22	22
23	23
24	24
25	25
26	26
27	27
28	28
29	29
30	30
31	31
32	32
33	33
34	34
35	35
36	36
37	37
38	38
39	39
40	40
41	41
42	42
43	43
44	44
45	45
46	46
47	47
48	48
49	49
50	50
51	51
52	52
53	53
54	54
55	55
56	56
57	57
58	58
59	59
60	60
61	61
62	62
63	63
64	64
65	65
66	66
67	67
68	68
69	69
70	70
71	71
72	72
73	73
74	74
75	75
76	76
77	77
78	78
79	79
80	80
81	81
82	82
83	83
84	84
85	85
86	86
87	87
88	88
89	89
90	90
91	91
92	92
93	93
94	94
95	95
96	96
97	97
98	98
99	99
100	100

8 5/8"	
--------	--

5 1/2"


[illegible]


[illegible]

All interpretations are opinions based on inferences from electrical or other measurements and we cannot and do not guarantee the accuracy or correctness of any interpretation, and we shall not, except in the case of gross or willful negligence on our part, be liable or responsible for any loss, costs, damages, or expenses incurred or sustained by anyone resulting from any interpretation made by any of our officers, agents or employees. These interpretations are also subject to our general terms and conditions set out in our current Price Schedule.

---

Comments

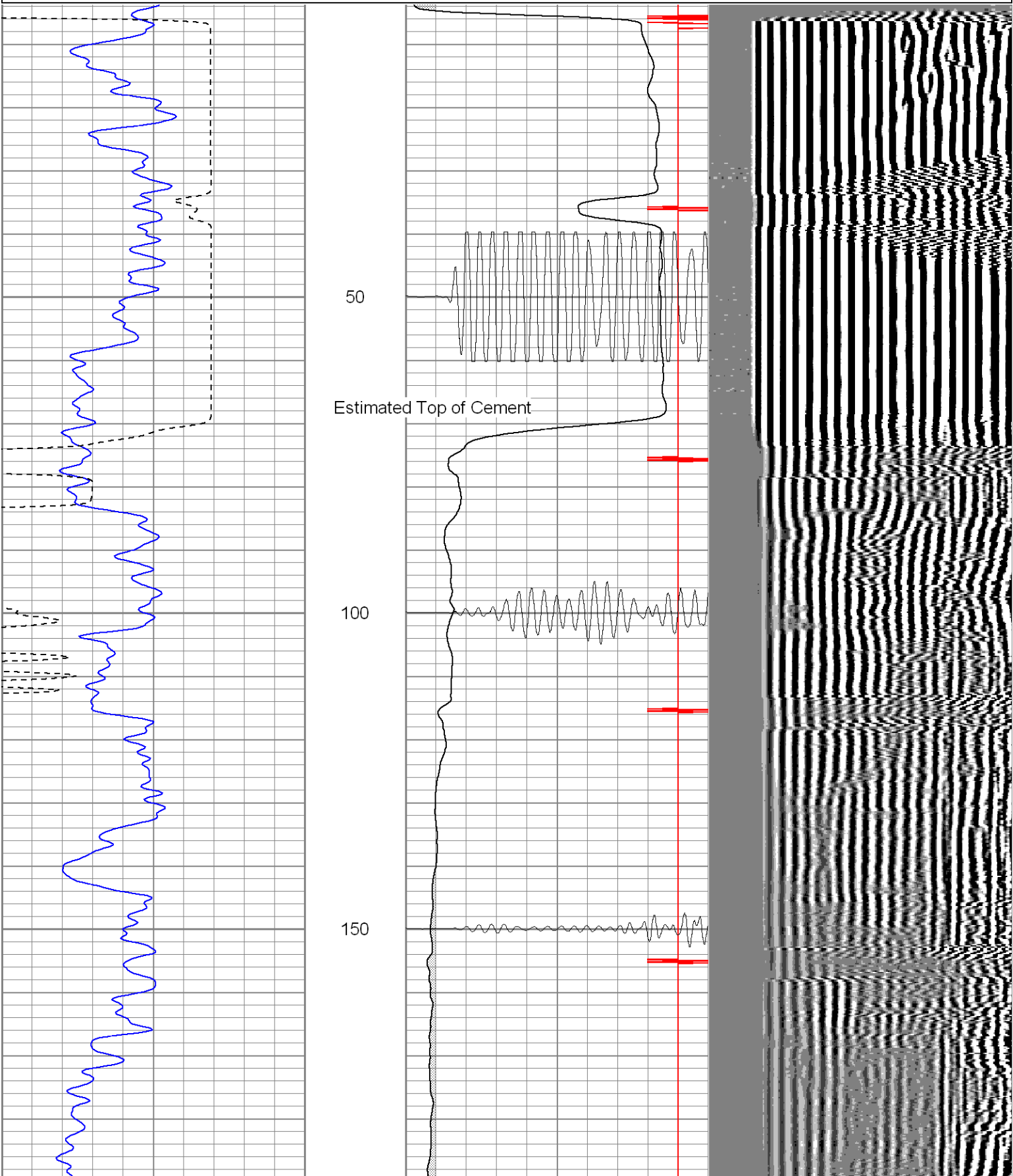
Lorencito Gate, at Y stay right, 1st right to location.

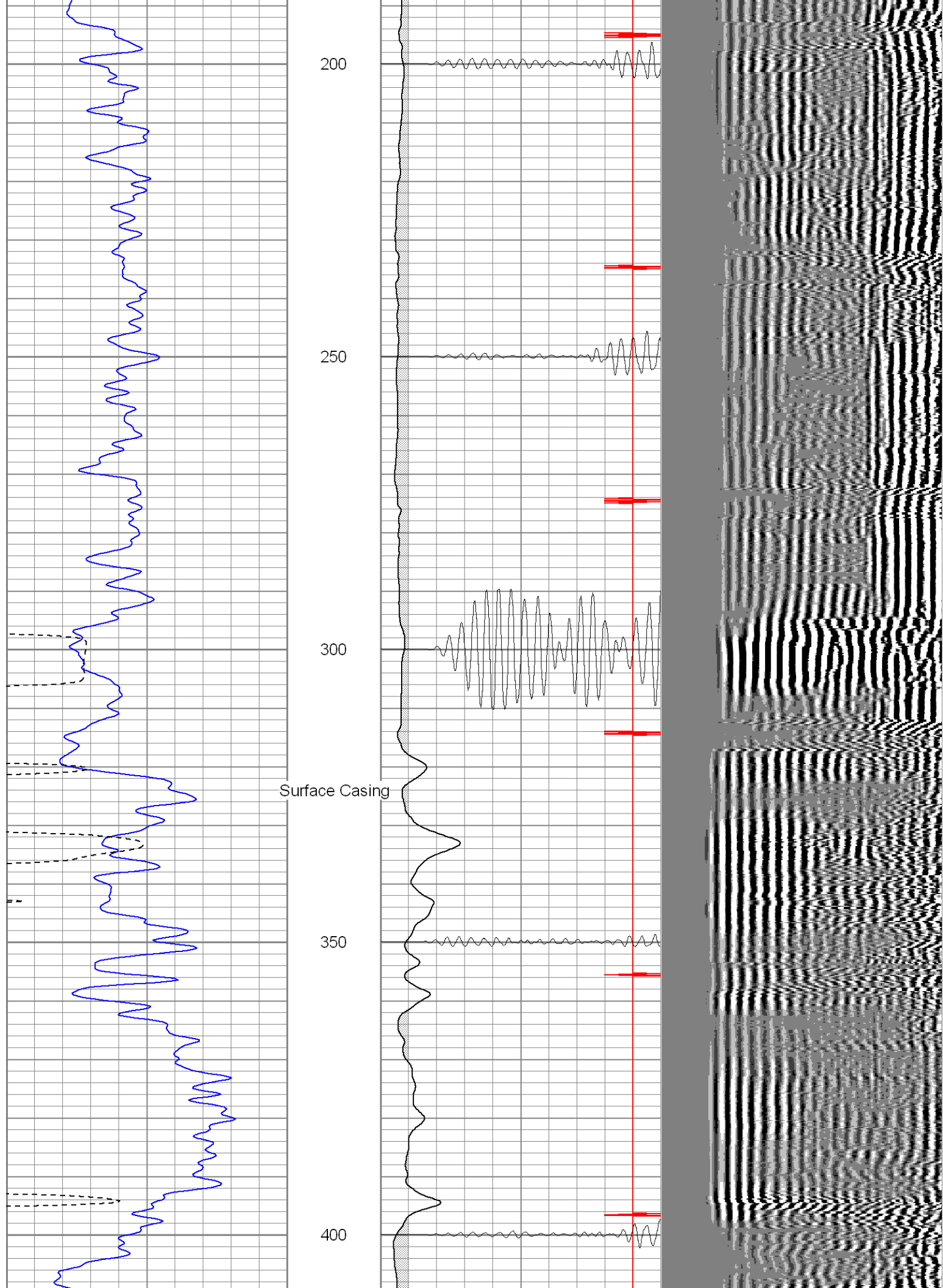


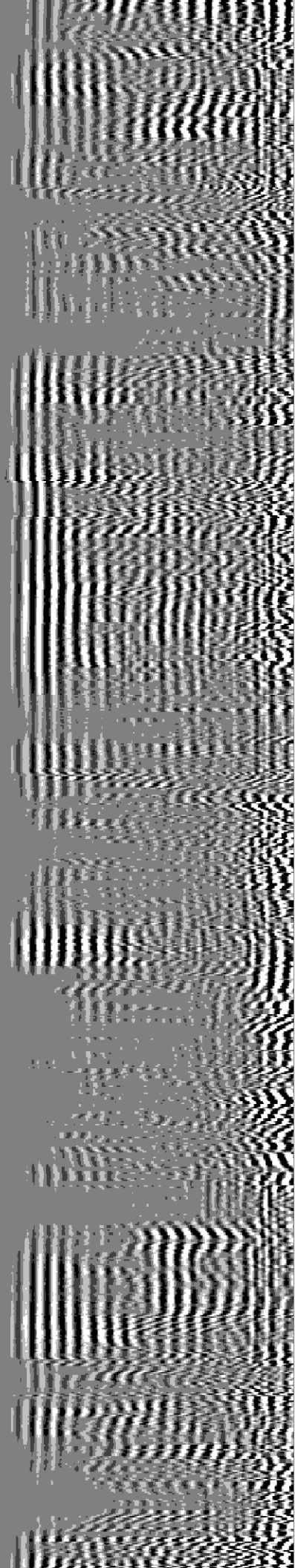
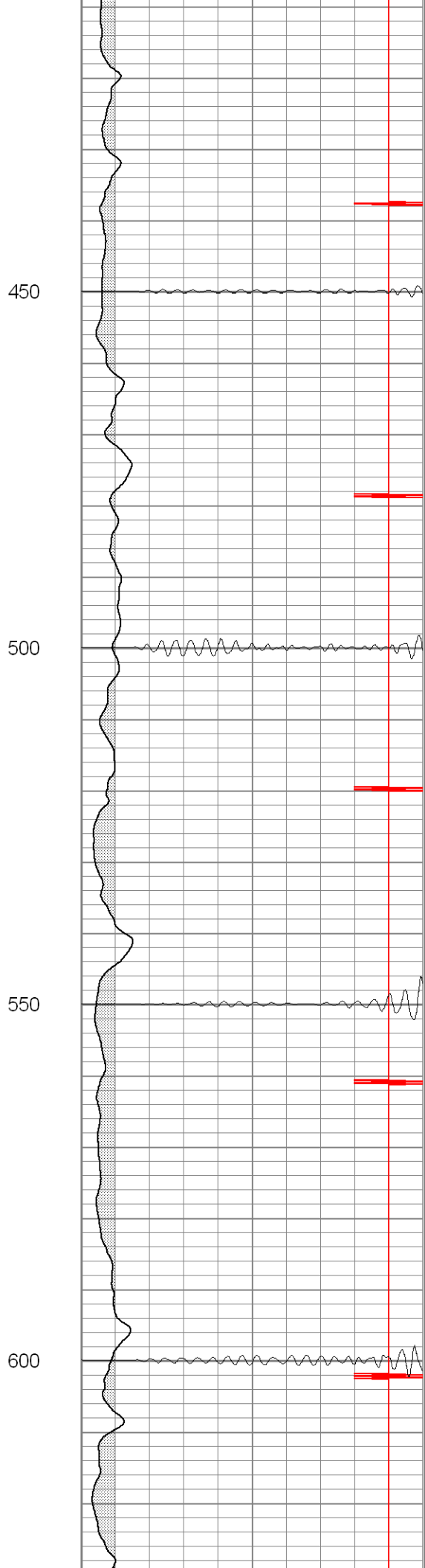
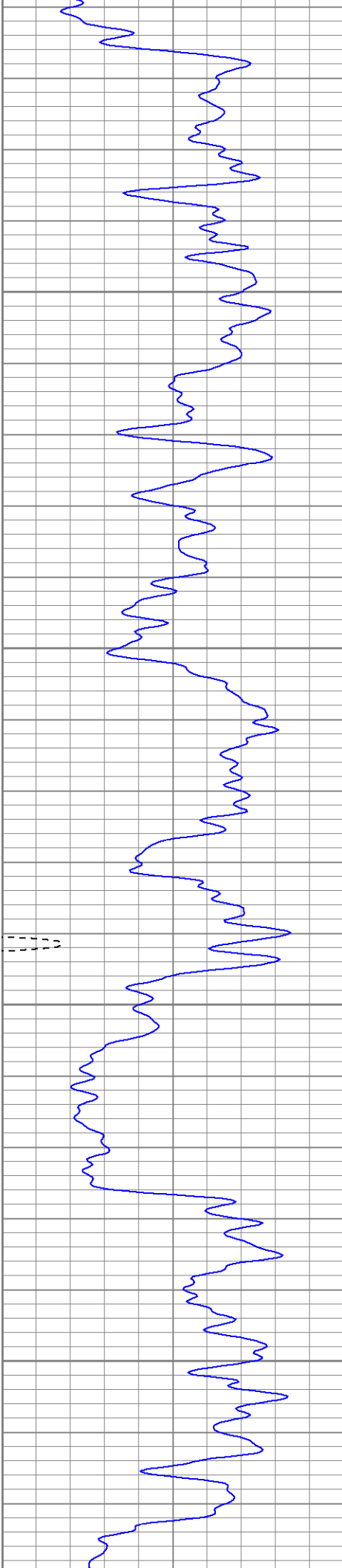
Black Lick, Pa.  
Mercer, Pa.  
Wooster, Oh.  
Cleveland, Ok.  
Trinidad, Co.

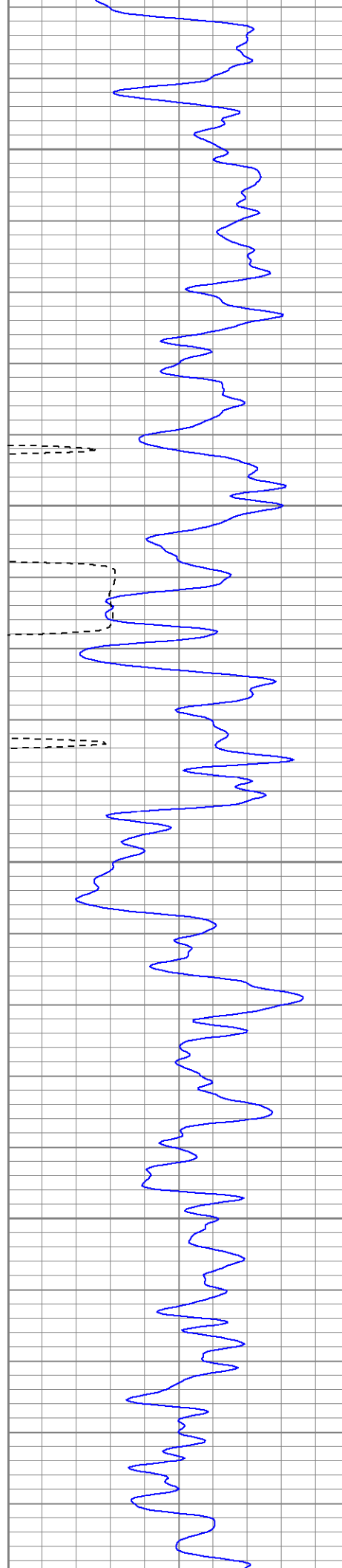
# Main Pass

0	GR (GAPI)	200	0	AMP3 (mV)	100	200	Variable Density	1200
400	TT3 (usec)	200	18	CCL	-2			
			200	CBL5	1200			









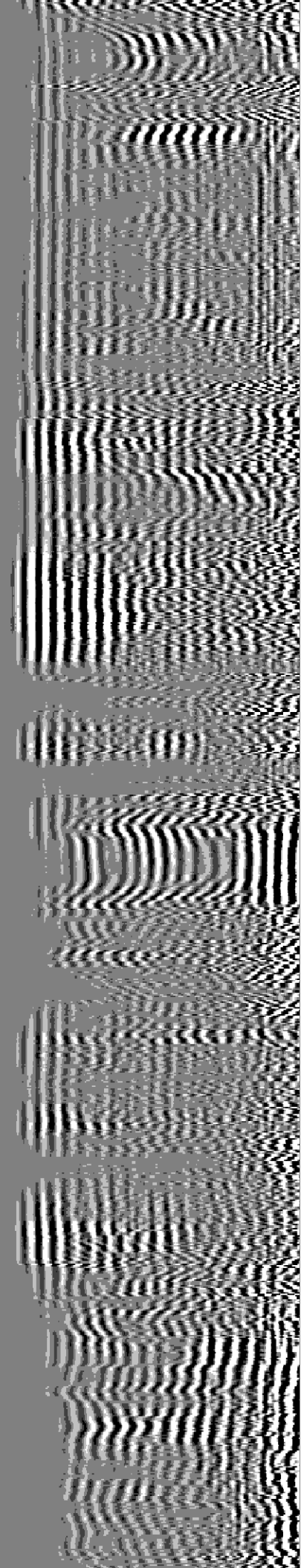
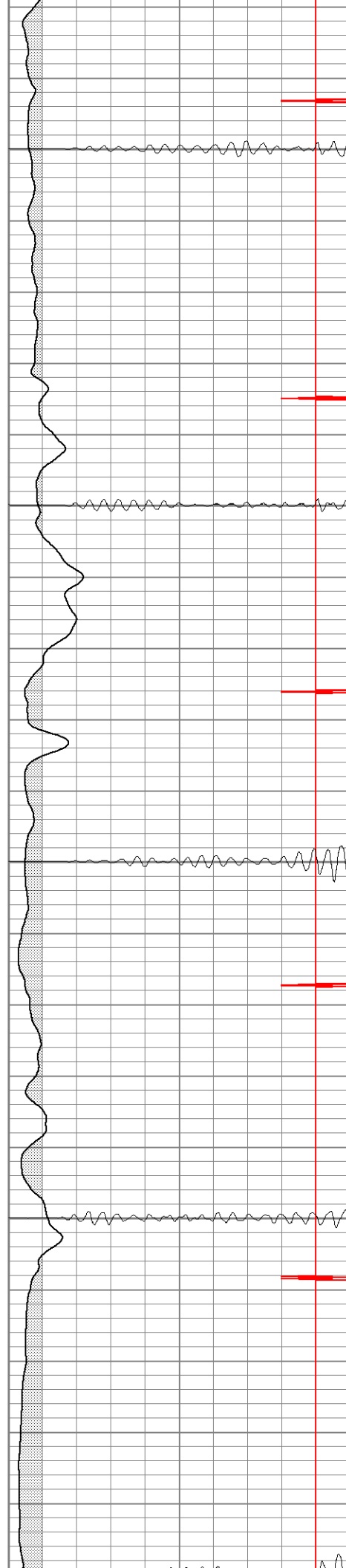
650

700

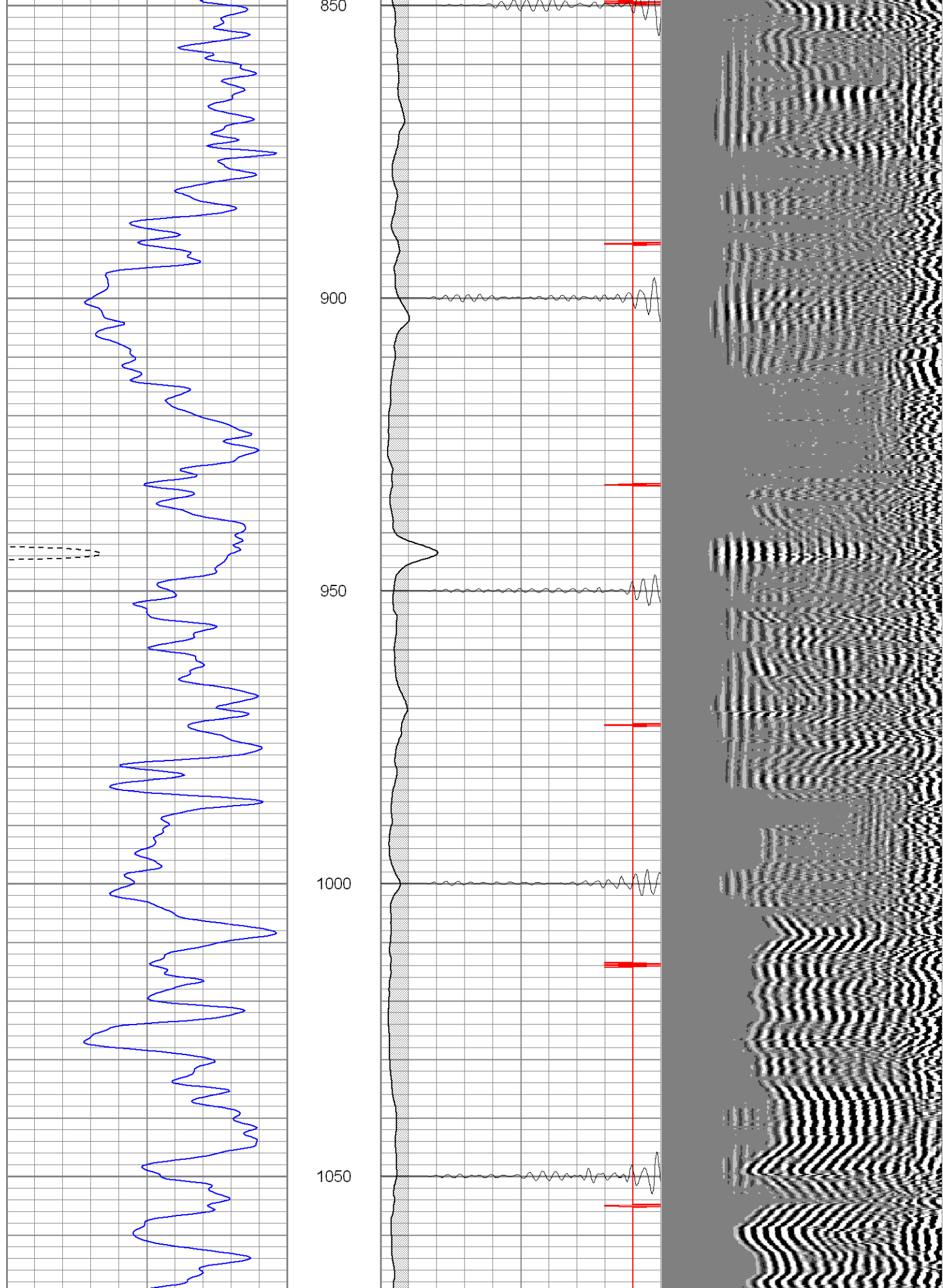
750

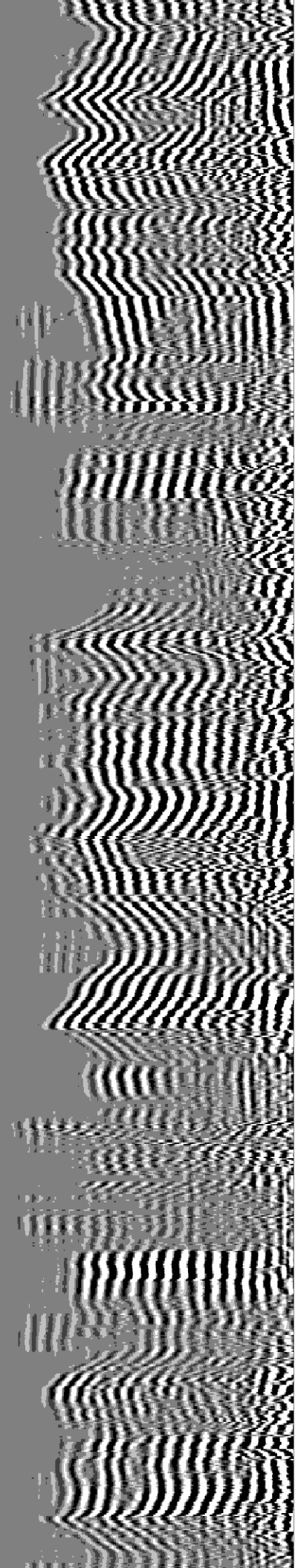
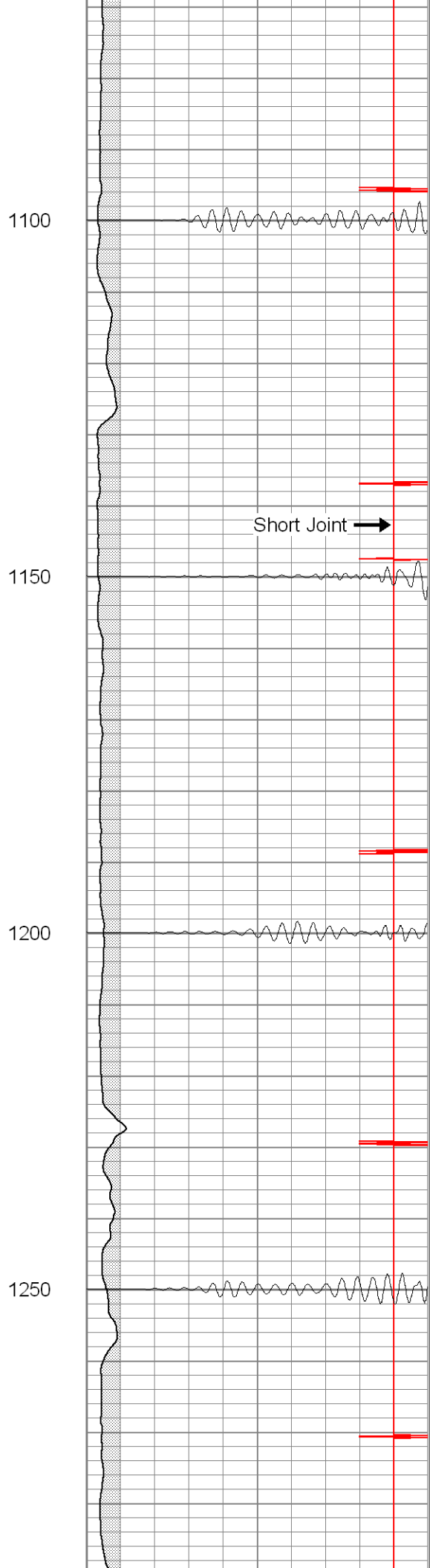
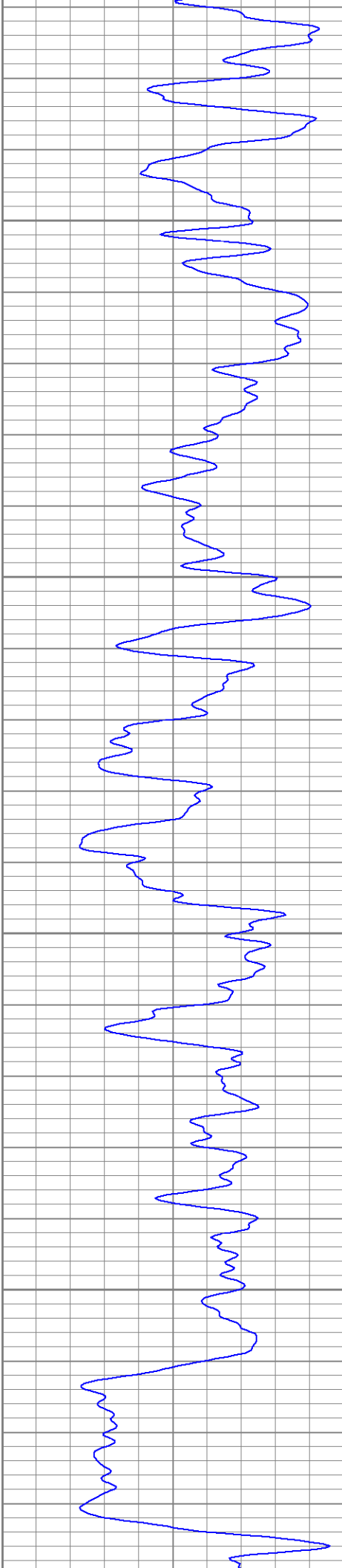
800

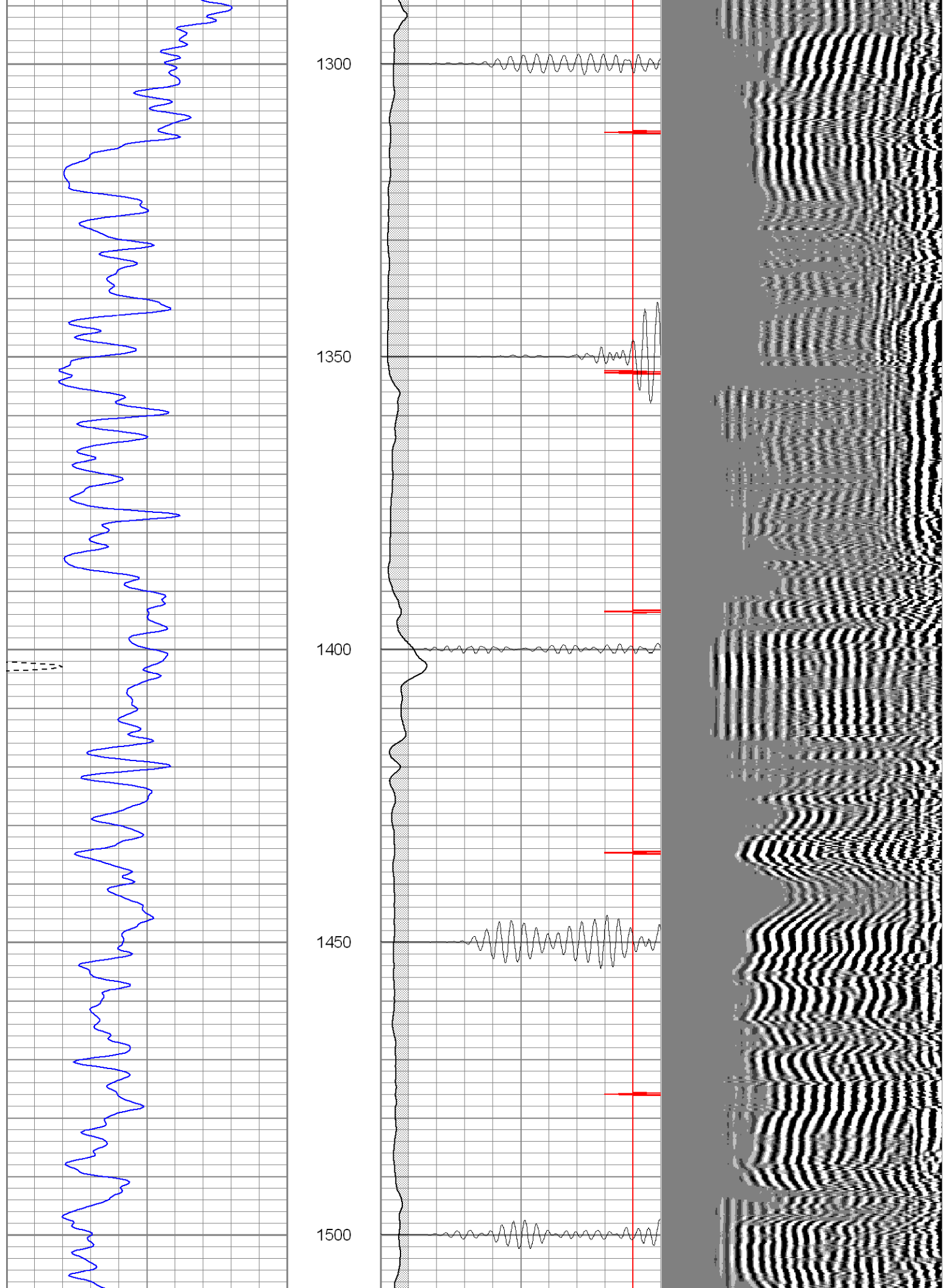
850



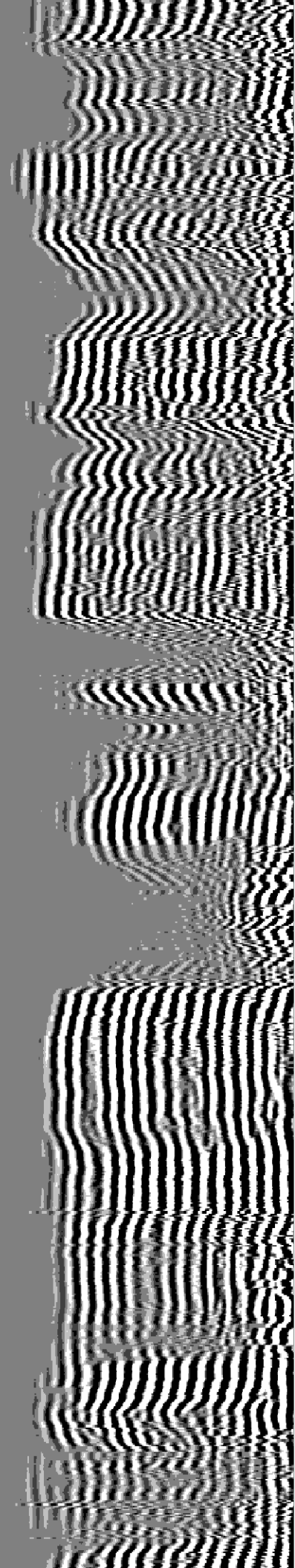
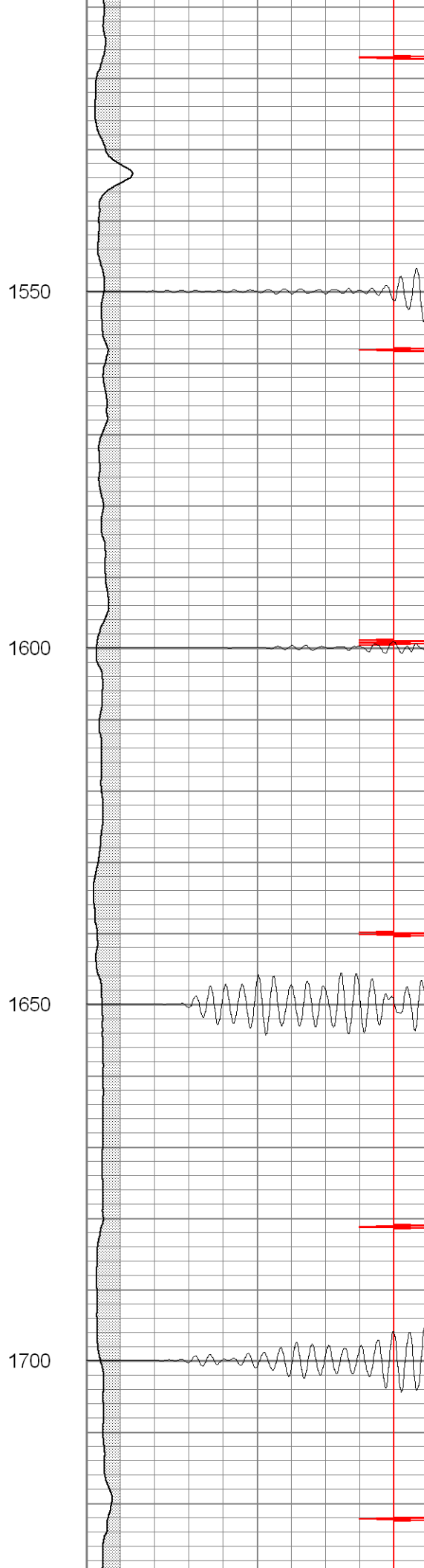
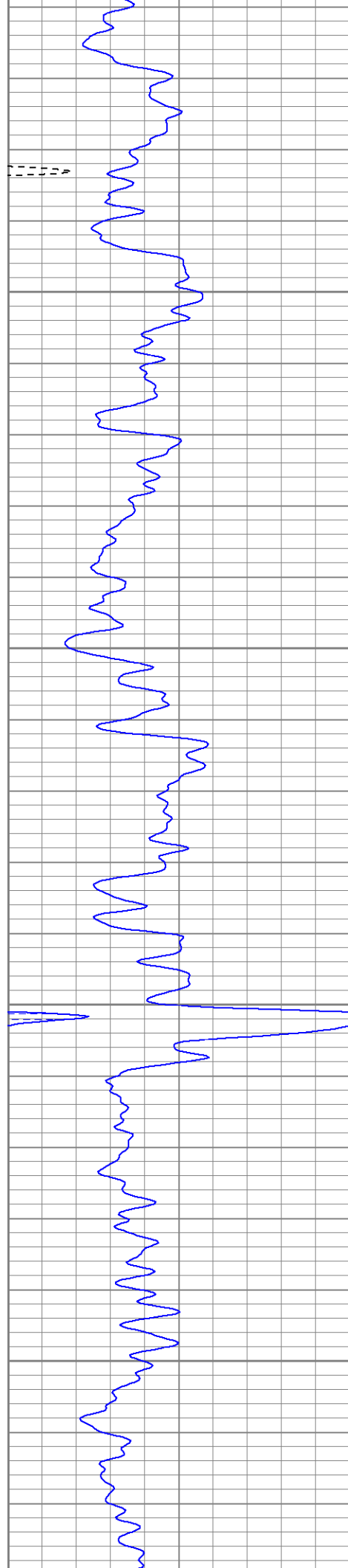


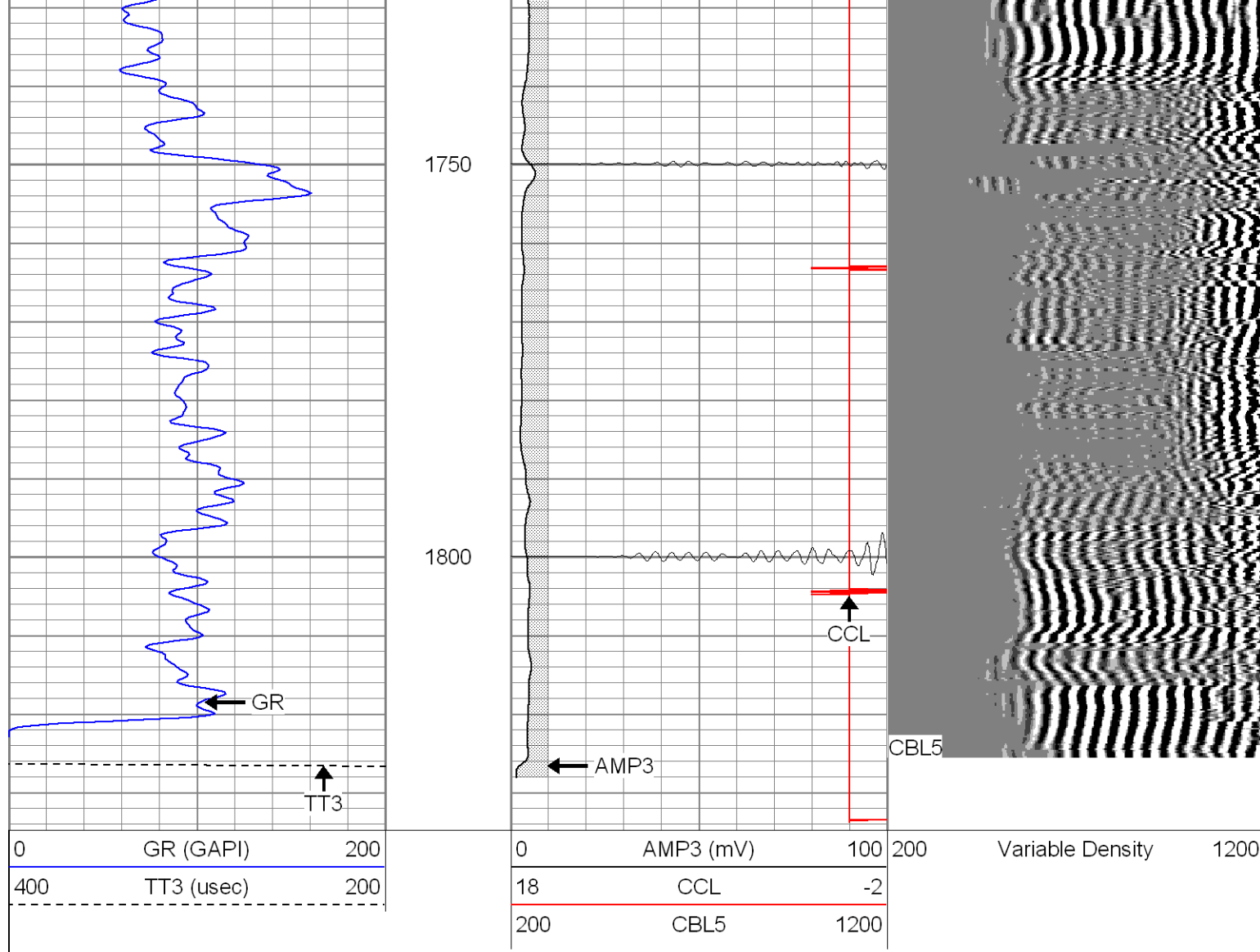










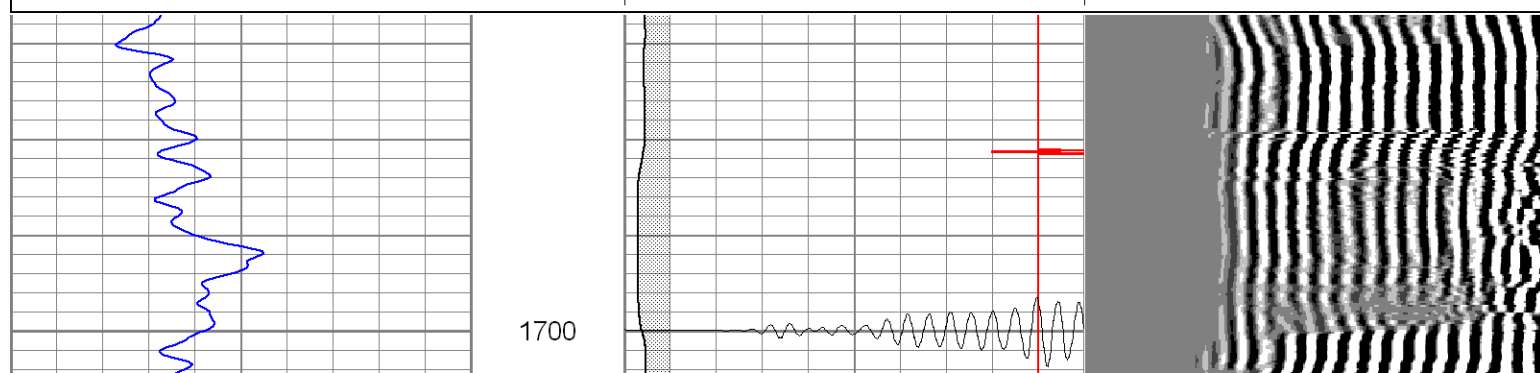
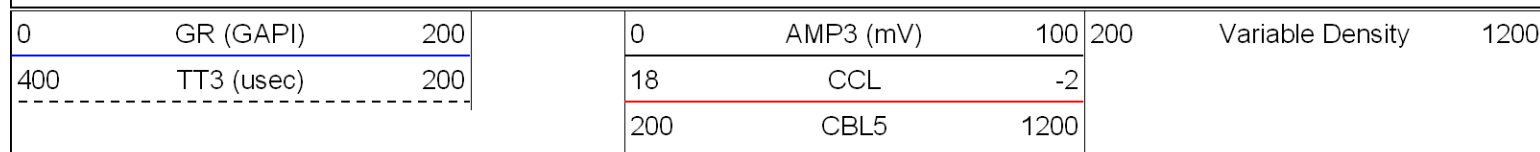


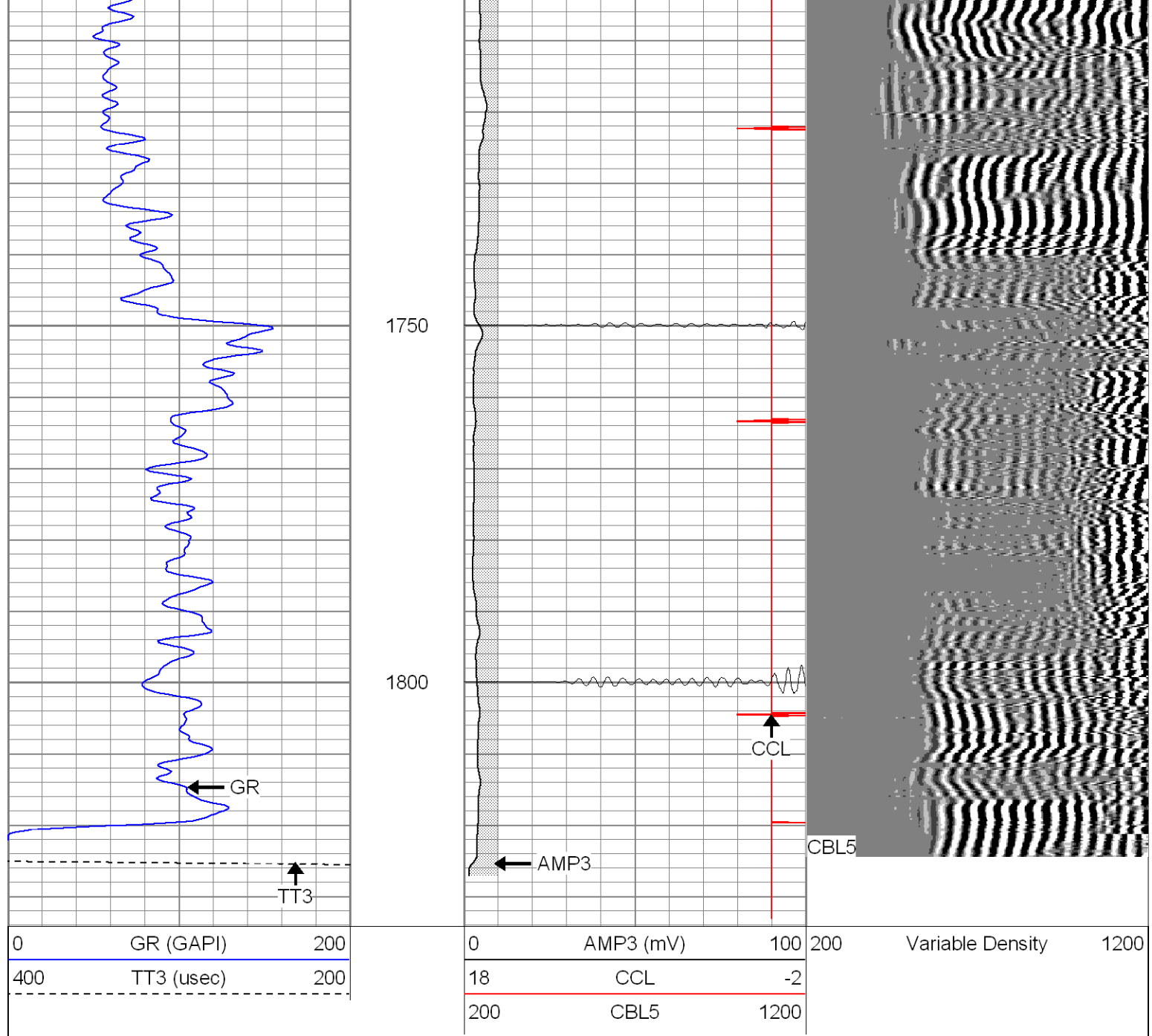
**SUPERIOR**

Black Lick, Pa.  
Mercer, Pa.  
Wooster, Oh.  
Cleveland, Ok.  
Trinidad, Co.

# Repeat Section

Database File: vprc142b13007.db  
Dataset Pathname: pass1  
Presentation Format: cblrt  
Dataset Creation: Tue Jan 30 14:17:07 2007 by Log Warrior 7.0 STD Cas  
Charted by: Depth in Feet scaled 1:240





### Cement Bond Log Calibration Report

Serial Number:	Titan5		
Tool Model:	2		
Performed:	Mon Jan 29 08:49:30 2007		
Depth:	210.983	ft	
Casing Diameter:	5.5	in	
	3' Spacing	5' Spacing	
Signal Zero:	0	0	mV
Calibrated Amplitude:	85	85	mV
Reading at Signal Zero:	-0.02	0.00866699	V
Reading in Free Pipe:	1.11	1.2	V
Gain:	75.2212	71.3486	
Offset:	1.50442	-0.618378	

### Gamma Ray Calibration Report

Serial Number:	Titan5
Tool Model:	T2
Performed:	Mon Nov 20 09:53:51 2006

Calibrator Value:	1.0	GAPI
-------------------	-----	------

Background Reading:	0.0	cps
---------------------	-----	-----

Calibrator Reading:	1.0	cps
---------------------	-----	-----

Sensitivity:	1.2500	GAPI/cps
--------------	--------	----------