

Company:	Orr Energy, LLC
Well:	South 6-23D
Field:	Wattenberg
County:	Weld

County: Weld	
Field: Wattenberg	
Location: NESW Sec. 6, T5N, R66W	
Well: South 6-23D	
Company: Orr Energy, LLC	
<div>Platform Express</div> <div>Directional Survey</div> <div>True Vertical Depth</div>	
<div> <div> <div>NESW Sec. 6, T5N, R66W</div> <div>SURF: 2613' FNL X 2657' FWL</div> <div>BHL: 1779' FSL X 2039' FWL (Actual)</div> </div> <div> <div>Permanent Datum: _____</div> <div>Log Measured From: _____</div> <div>Drilling Measured From: _____</div> </div> <div> <div>Ground Level _____</div> <div>Kelly Bushing _____</div> <div>Kelly Bushing _____</div> </div> </div>	
<div> <div> <div>API Serial No.</div> <div>05-123-25983-000C</div> </div> <div> <div>Section</div> <div>6</div> </div> <div> <div>Township</div> <div>5N</div> </div> <div> <div>Range</div> <div>66W</div> </div> </div>	
<div> <div> <div>Elev.: _____</div> <div>K.B. 4811 ft</div> <div>G.L. 4795 ft</div> <div>D.F. 4810 ft</div> </div> <div> <div>Elev.: _____</div> <div>16.0 ft above Perm. Datum</div> </div> </div>	
<div> <div>*****</div> <div> <div>Correlation</div> </div> </div>	

County: Weld	
Field: Wattenberg	
Location: NESW Sec. 6, T5N, R66W	
Well: South 6-23D	
Company: Orr Energy, LLC	
<div>Platform Express</div> <div>Directional Survey</div> <div>True Vertical Depth</div>	
<div> <div> <div>NESW Sec. 6, T5N, R66W</div> <div>SURF: 2613' FNL X 2657' FWL</div> <div>BHL: 1779' FSL X 2039' FWL (Actual)</div> </div> <div> <div>Permanent Datum: _____</div> <div>Log Measured From: _____</div> <div>Drilling Measured From: _____</div> </div> <div> <div>Ground Level _____</div> <div>Kelly Bushing _____</div> <div>Kelly Bushing _____</div> </div> </div>	
<div> <div> <div>API Serial No.</div> <div>05-123-25983-000C</div> </div> <div> <div>Section</div> <div>6</div> </div> <div> <div>Township</div> <div>5N</div> </div> <div> <div>Range</div> <div>66W</div> </div> </div>	
<div> <div> <div>Elev.: _____</div> <div>K.B. 4811 ft</div> <div>G.L. 4795 ft</div> <div>D.F. 4810 ft</div> </div> <div> <div>Elev.: _____</div> <div>16.0 ft above Perm. Datum</div> </div> </div>	
<div> <div>*****</div> <div> <div>Correlation</div> </div> </div>	

[illegible]

DEPTH SUMMARY LISTING

Date Created: 28-NOV-2007 19:44:15

Depth System Equipment

Depth Measuring Device		Tension Device		Logging Cable	
Type:	IDW-B	Type:	CMTD-B/A	Type:	7-39P-LXS
Serial Number:	3713	Serial Number:	1223	Serial Number:	6029
Calibration Date:	07-May-2007	Calibration Date:	6-Nov-2007	Length:	17075.00 FT
Calibrator Serial Number:	1	Calibrator Serial Number:	100513	Conveyance Method:	Wireline
Calibration Cable Type:	7-39P-LXS	Calibration Gain:	0.81	Rig Type:	LAND
Wheel Correction 1:	-3	Calibration Offset:	2579.82		
Wheel Correction 2:	-2				

Depth Control Parameters

Log Sequence:	First Log In the Well
Rig Up Length At Surface:	0.00 FT
Rig Up Length At Bottom:	0.00 FT
Rig Up Length Correction:	0.00 FT
Stretch Correction:	12.00 FT
Tool Zero Check At Surface:	0.00 FT

Depth Control Remarks

1. All Schlumberger depth policy procedures applied
2. This is the primary depth reference
- 3.
- 4.
- 5.
- 6.

DISCLAIMER

THE USE OF AND RELIANCE UPON THIS RECORDED-DATA BY THE HEREIN NAMED COMPANY (AND ANY OF ITS AFFILIATES, PARTNERS, REPRESENTATIVES, AGENTS, CONSULTANTS AND EMPLOYEES) IS SUBJECT TO THE TERMS AND CONDITIONS AGREED UPON BETWEEN SCHLUMBERGER AND THE COMPANY, INCLUDING: (a) RESTRICTIONS ON USE OF THE RECORDED-DATA; (b) DISCLAIMERS AND WAIVERS OF WARRANTIES AND REPRESENTATIONS REGARDING COMPANY'S USE OF AND RELIANCE UPON THE RECORDED-DATA; AND (c) CUSTOMER'S FULL AND SOLE RESPONSIBILITY FOR ANY INFERENCE DRAWN OR DECISION MADE IN CONNECTION WITH THE USE OF THIS RECORDED-DATA.

OTHER SERVICES1 OS1: OS2: OS3: OS4: OS5:	OTHER SERVICES2 OS1: OS2: OS3: OS4: OS5:
REMARKS: RUN NUMBER 1	REMARKS: RUN NUMBER 2
This is first run in hole	
Tool run as per tool sketch	
Matrix is noted on porosity log	

Rig: Ensign 7					
Crew: Tim Ludgate & Mark Hoffman					
<div style="text-align: center;">RUN 1</div> <div> <div>SERVICE ORDER #:</div> <div>PROGRAM VERSION:</div> <div>FLUID LEVEL:</div> </div> <div> <div>11911893</div> <div>15C0-309</div> </div>			<div style="text-align: center;">RUN 2</div> <div> <div>SERVICE ORDER #:</div> <div>PROGRAM VERSION:</div> <div>FLUID LEVEL:</div> </div>		
LOGGED INTERVAL	START	STOP	LOGGED INTERVAL	START	STOP

EQUIPMENT DESCRIPTION					
RUN 1			RUN 2		
SURFACE EQUIPMENT					
GSR-U/Y 390 NCT-B CNB-AB NCS-VB	WITM (DTS)-A				
DOWNHOLE EQUIPMENT					
LEH-QT LEH-QT					51.6
DTC-H ECH-KC DTCH0-A 8980 DTCH1-A	CTEM TelStatus ToolStatu		— 47.7 — 45.6		48.6
AH-4NM AH-4NM					45.6
GPIT-C GPIC-C GPIH-B					41.6
HILTB-FTB HGNSD-B 863 HMCA HGNH NLS-KL NSR-F HACCZ 452 HCNT HGR HRCC-B 1873 HRMS-B 1847 HRGD-B 1938 GLS-VJ MCFL Device HILT Nucl. LS HILT Nucl. SS HILT Nucl. BS AIT-H 236 AHIS-BA 236 AHRM-A NPV-N	HGNS HTEM HMCA HGNS Gamm HGNS Neut HGNS Neut HGNS sens HRCC cart MCFL		— 37.6 — 36.9 31.1 30.6 28.2 24.2 18.8		37.6

HILT cali
HRDD-LS
HRDD-SS
HRDD-BS

18.3
17.9

Induction
Temperatu
Power Sup

7.9

SP SENSOR
GPIT HV DF
HTEN HMAS
Accelerom
Mud Resis
Tension

0.1

0.0

TOOL ZERO

MAXIMUM STRING DIAMETER 4.63 IN
MEASUREMENTS RELATIVE TO TOOL ZERO
ALL LENGTHS IN FEET

Production String

(in) (ft)
OD ID MD

Well Schematic

(ft) (in)
MD OD ID

Casing String

0.0 8.625 8.097

Casing String

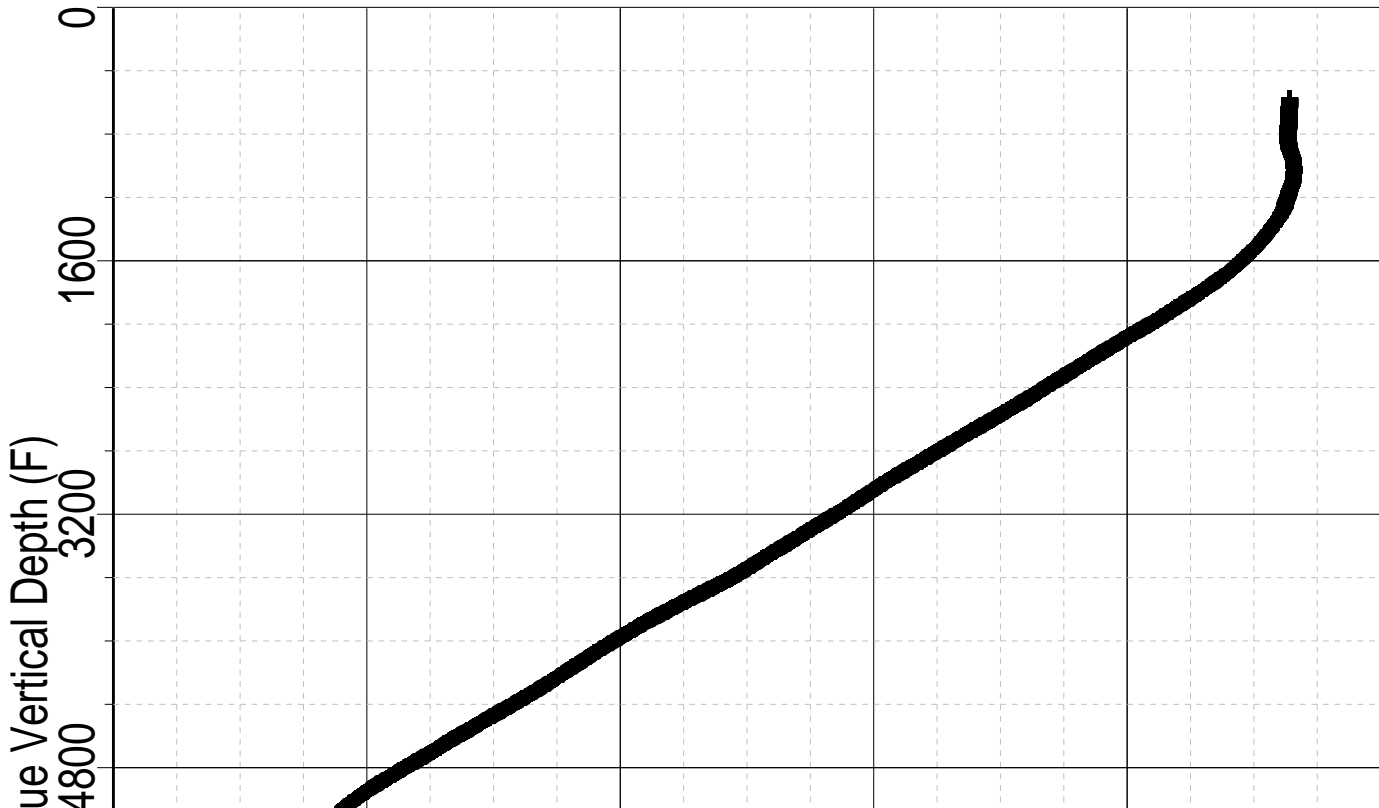
833.0 8.625 8.097
833.0 7.875

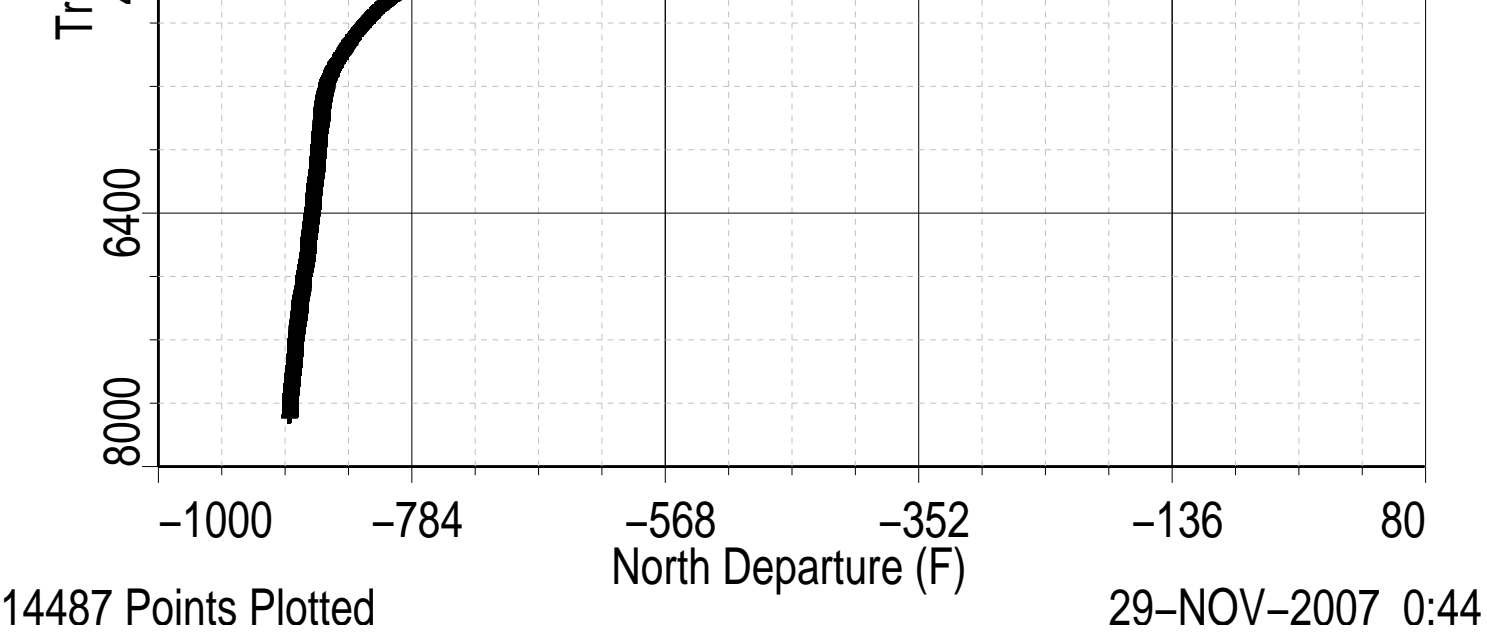
Casing Shoe
Borehole Segment

[illegible]

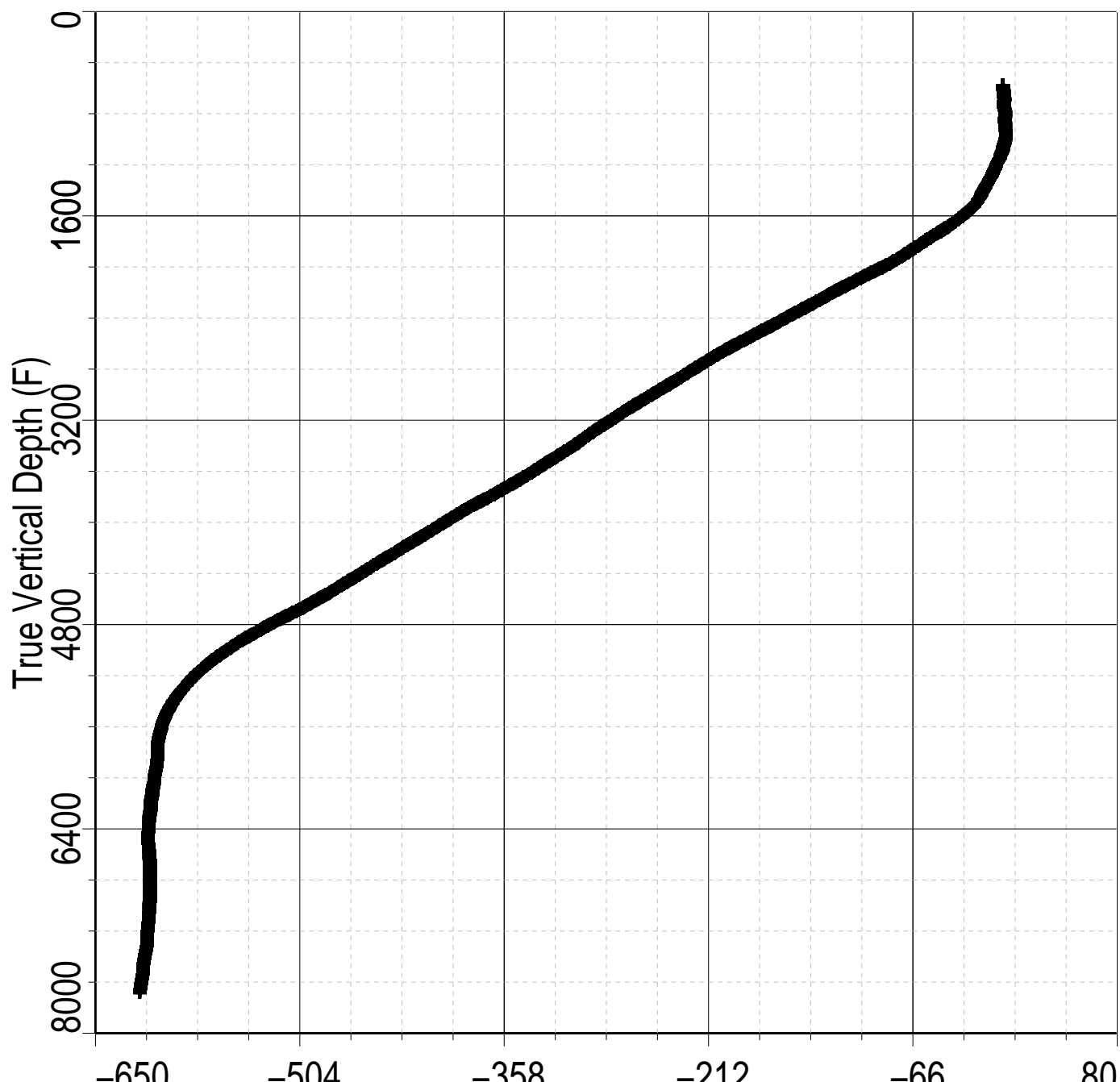
All depths are driller's depths

Index: 7813.0 – 566.0 FT

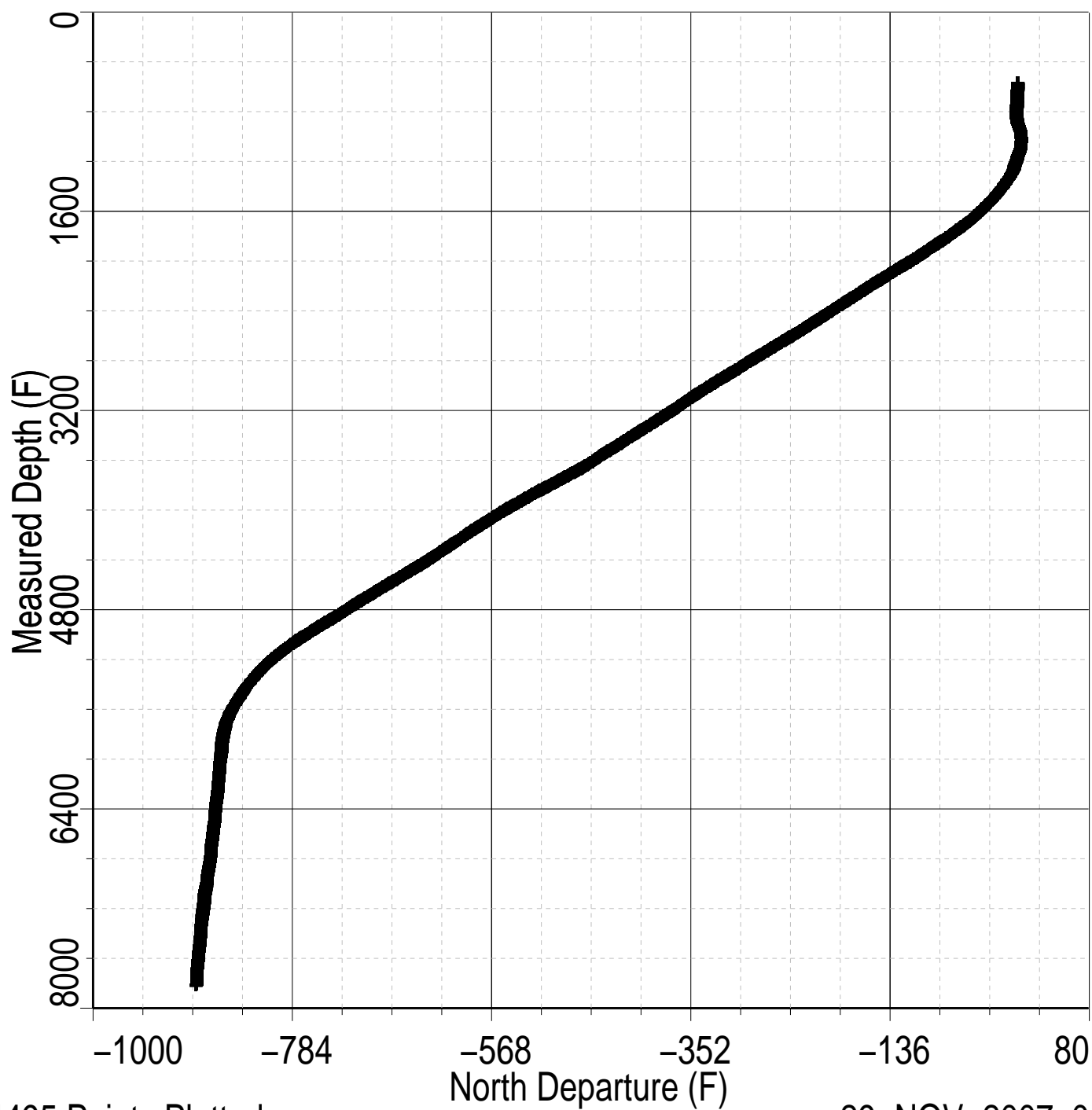




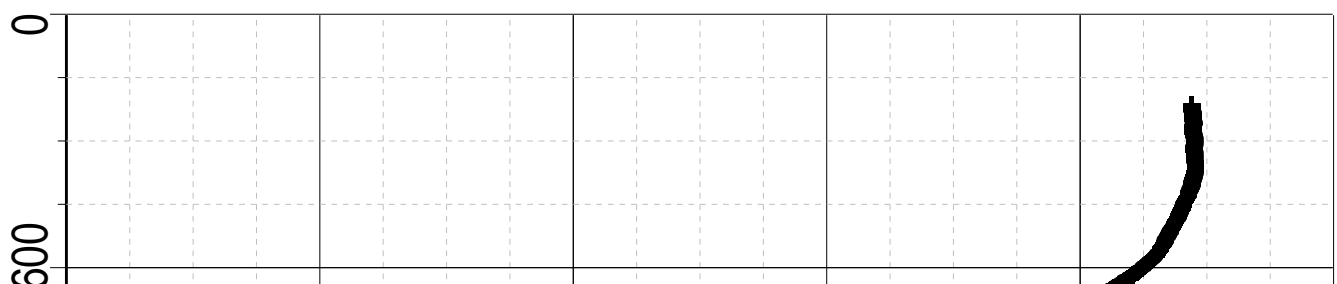
Index: 7813.0 – 566.0 FT

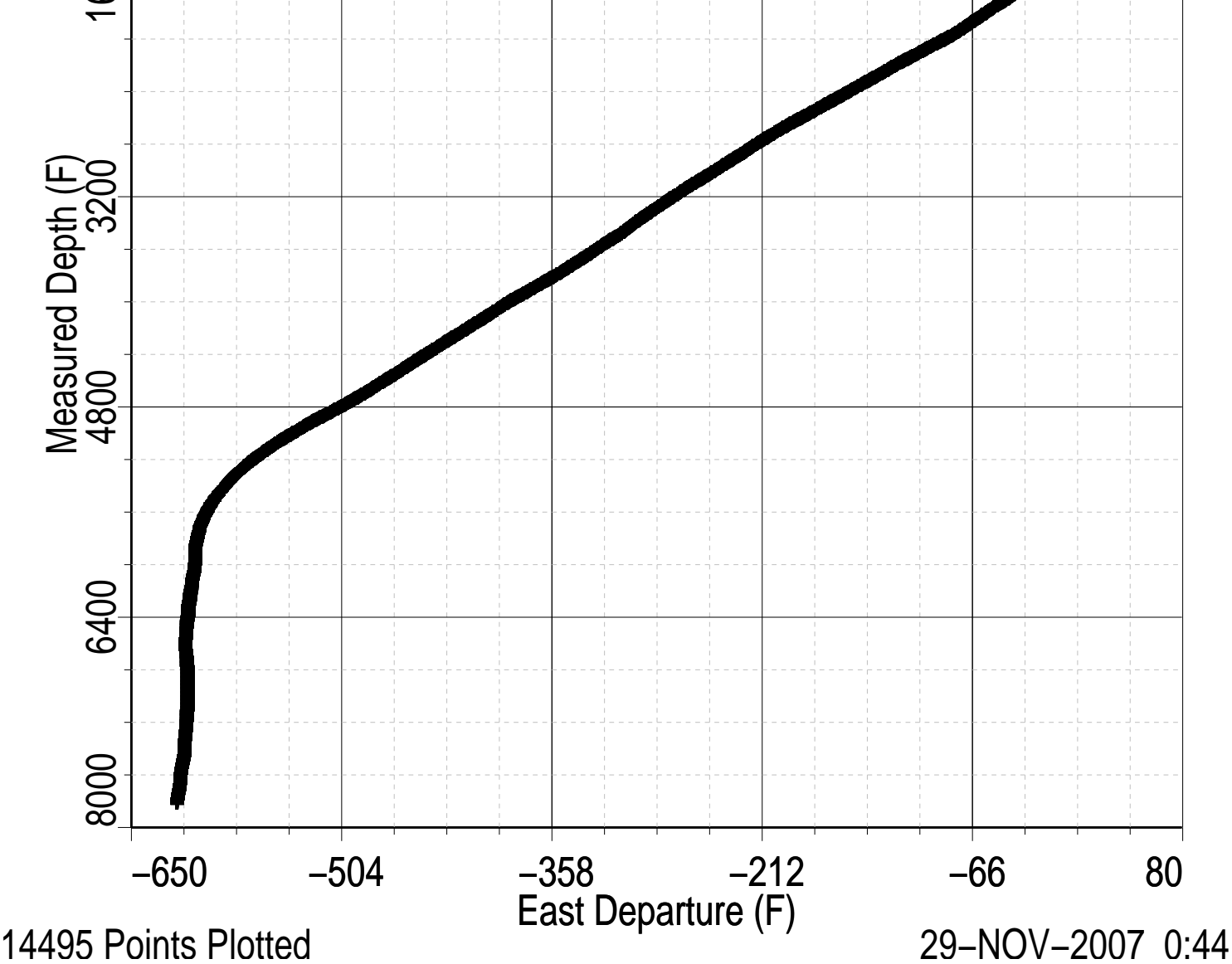


Index: 7813.0 – 566.0 FT

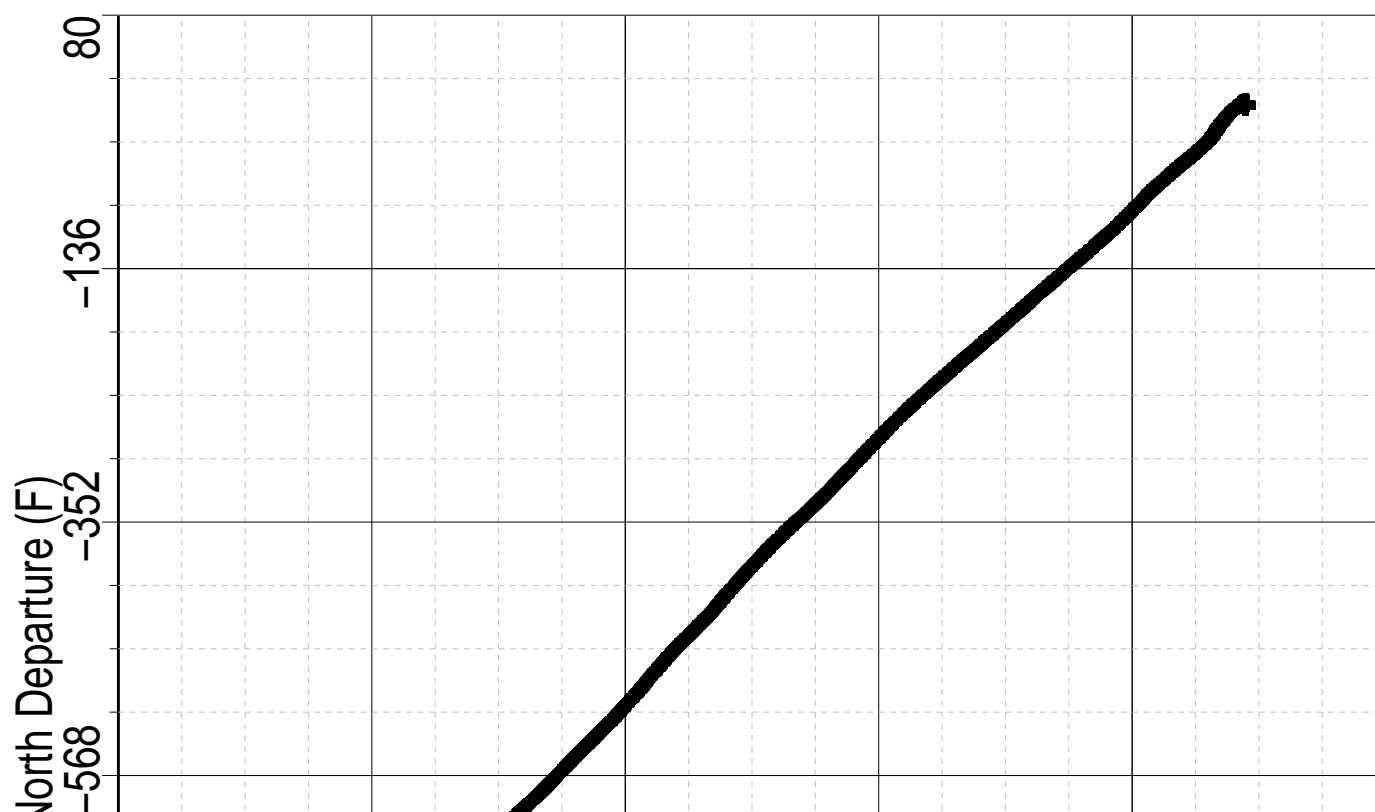


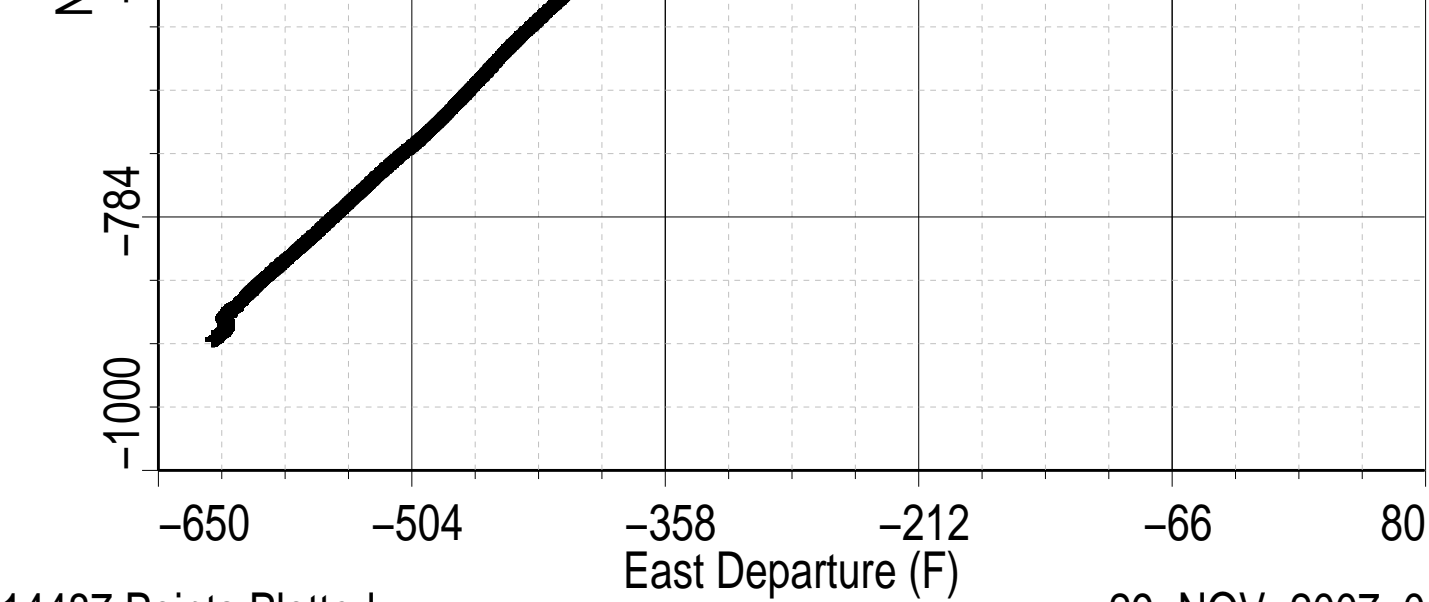
Index: 7813.0 – 566.0 FT





Index: 7813.0 – 566.0 FT





14487 Points Plotted

29-NOV-2007 0:44

Company: **Orr Energy, LLC**

Schlumberger

Well: **South 6-23D**

Field: **Wattenberg**

County: **Weld**

State: **Colorado**

Platform Express
Directional Survey
True Vertical Depth