

Patterson

**DUAL
INDUCTION
LOG**

Company XTO Energy Inc.		Company XTO Energy Inc.	
Well Apache Canyon 23-16		Well Apache Canyon 23-16	
Field Purgatoire River		Field Purgatoire River	
County Las Animas		County Las Animas	
State Colorado		State Colorado	
Location: API # : 05 071 08686 00		Other Services CDL NEUTRON	
SEC 23 TWP 34S RGE 68W		Elevation	
Permanent Datum	Ground Level	Elevation	7704'
Log Measured From	Ground Level		
Drilling Measured From	Ground Level		
Date 3-06-06			
Run Number	One		
Depth Driller	1738'		
Depth Logger	1735'		
Bottom Logged Interval	1733'		
Top Log Interval	Surface Casing		
Casing Driller	8 5/8" @ 226'		
Casing Logger	228'		
Bit Size	7 7/8"		
Type Fluid in Hole	Water		
Density / Viscosity	///		
pH / Fluid Loss	///		
Source of Sample	///		
Rm @ Meas. Temp	///		
Rmf @ Meas. Temp	///		
Rmc @ Meas. Temp	///		
Source of Rmf / Rmc	///		
Rm @ BHT	///		
Time Circulation Stopped	2.00 P.M.		
Time Logger on Bottom	3.45 P.M.		
Maximum Recorded Temperature	87 DEG F		
Equipment Number	T720		
Location	Trinidad		
Recorded By	M. Norton		
Witnessed By	Mr. Don Johnson		

<<< Fold Here >>>

All interpretations are opinions based on inferences from electrical or other measurements and we cannot and do not guarantee the accuracy or correctness of any interpretation, and we shall not, except in the case of gross or willful negligence on our part, be liable or responsible for any loss, costs, damages, or expenses incurred or sustained by anyone resulting from any interpretation made by any of our officers, agents or employees. These interpretations are also subject to our general terms and conditions set out in our current Price Schedule.

Comments

Well Directions:
First Bosque Entrance, Stay On Main Road Thru Green Gate,
Second Left, To Y Stay Right Drive Thru Location, Dead End On Location.

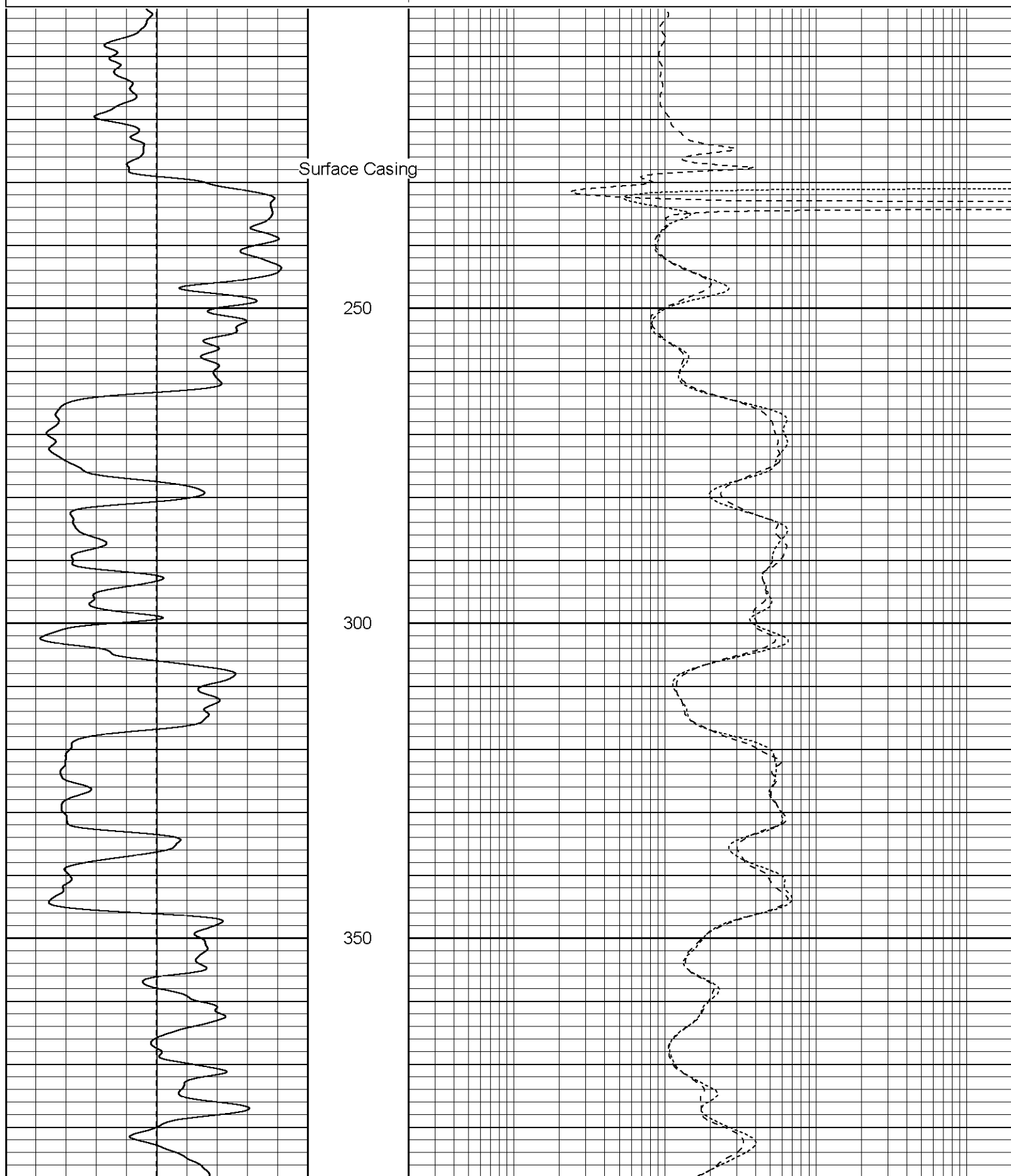
Patterson

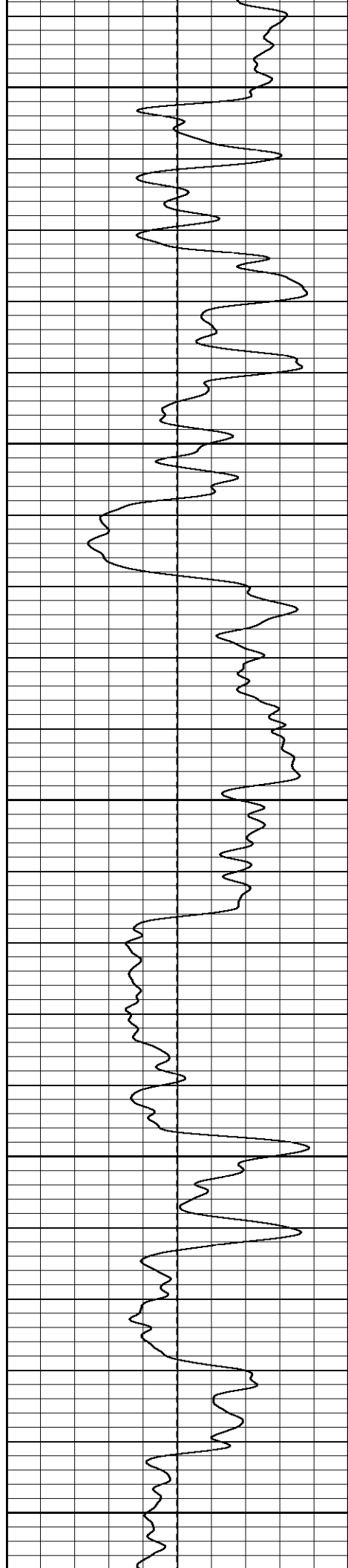
Main Pass

Database File: xtoac2316.db
Dataset Pathname: pass2.1
Presentation Format: dil
Dataset Creation: Mon Mar 06 17:47:03 2006 by Calc Warrior 7.0 STD Ope
Charted by: Depth in Feet scaled 1:240

0	GR (GAPI)	200
-100	SP (mV)	100

0.2	RILM (Ohm-m)	2000
0.2	RILD (Ohm-m)	2000
0.2	RLL3 (Ohm-m)	2000





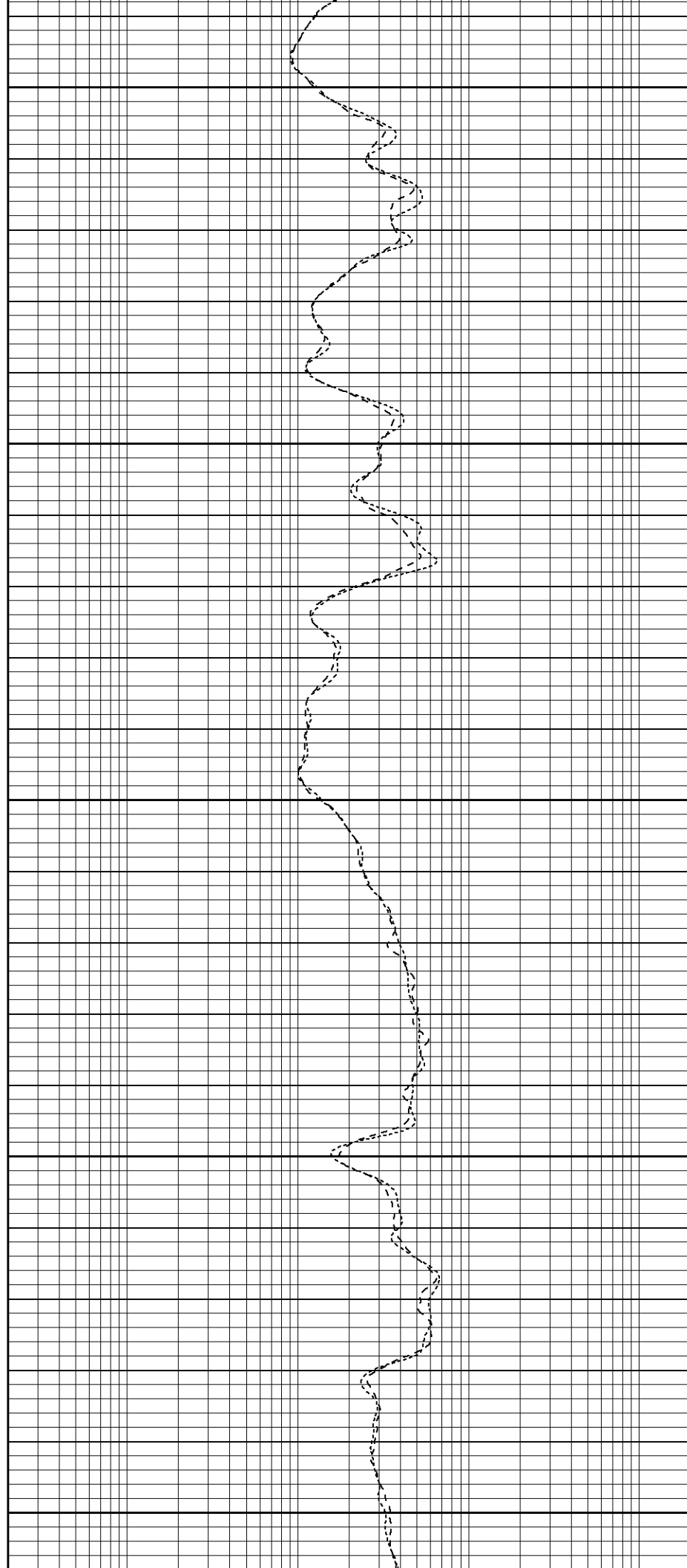
400

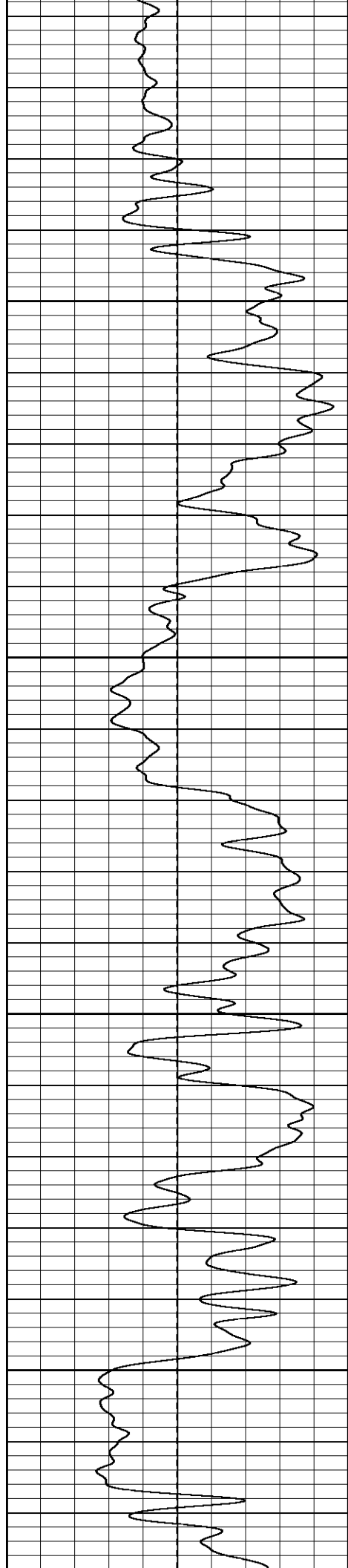
450

500

550

600



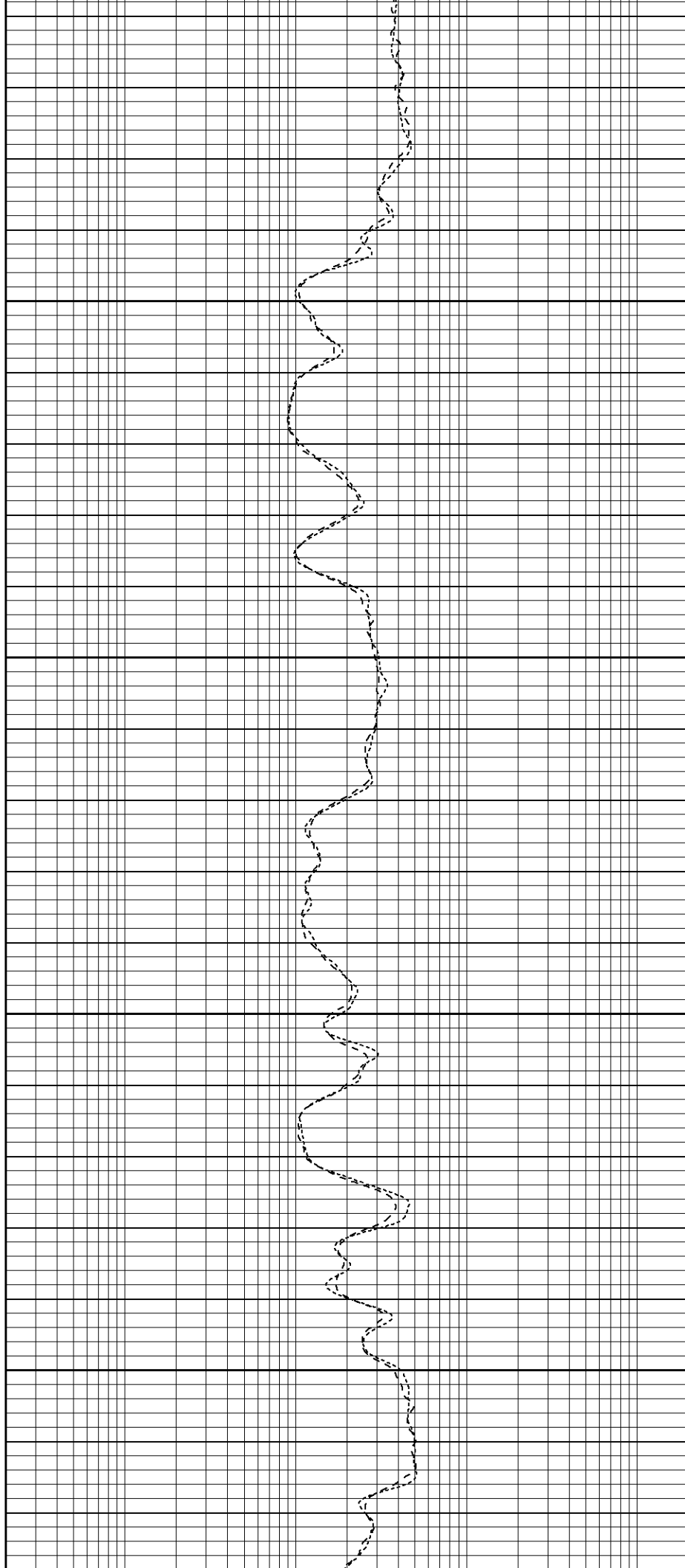


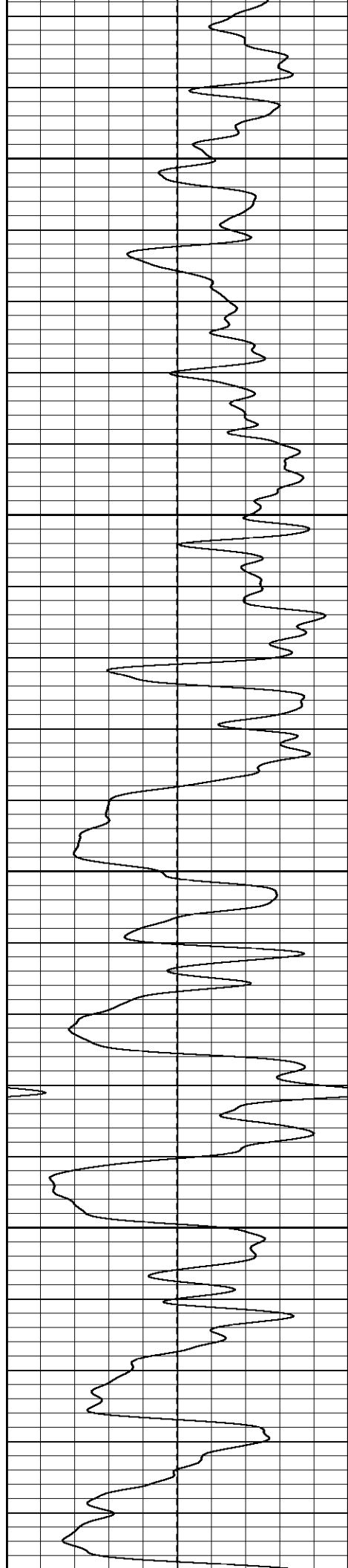
650

700

750

800



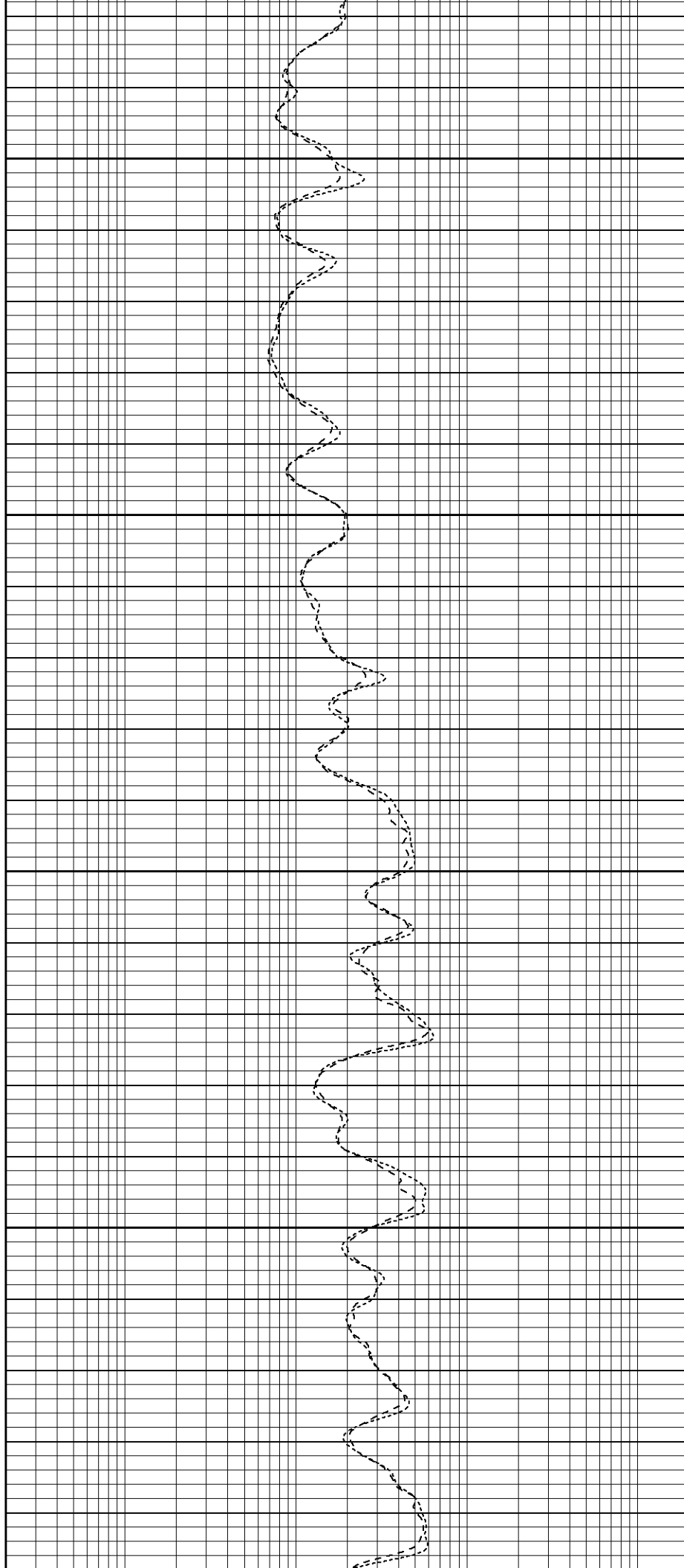


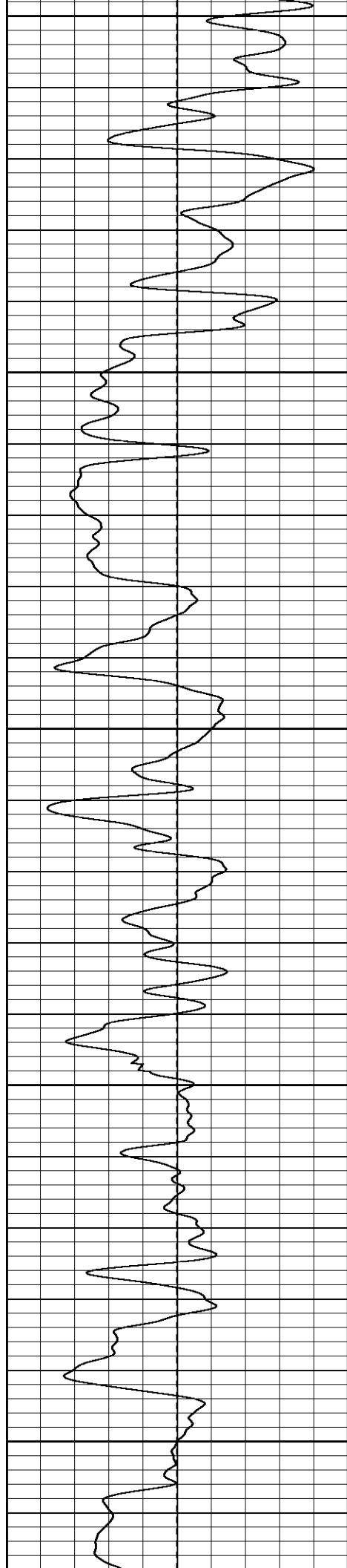
850

900

950

1000





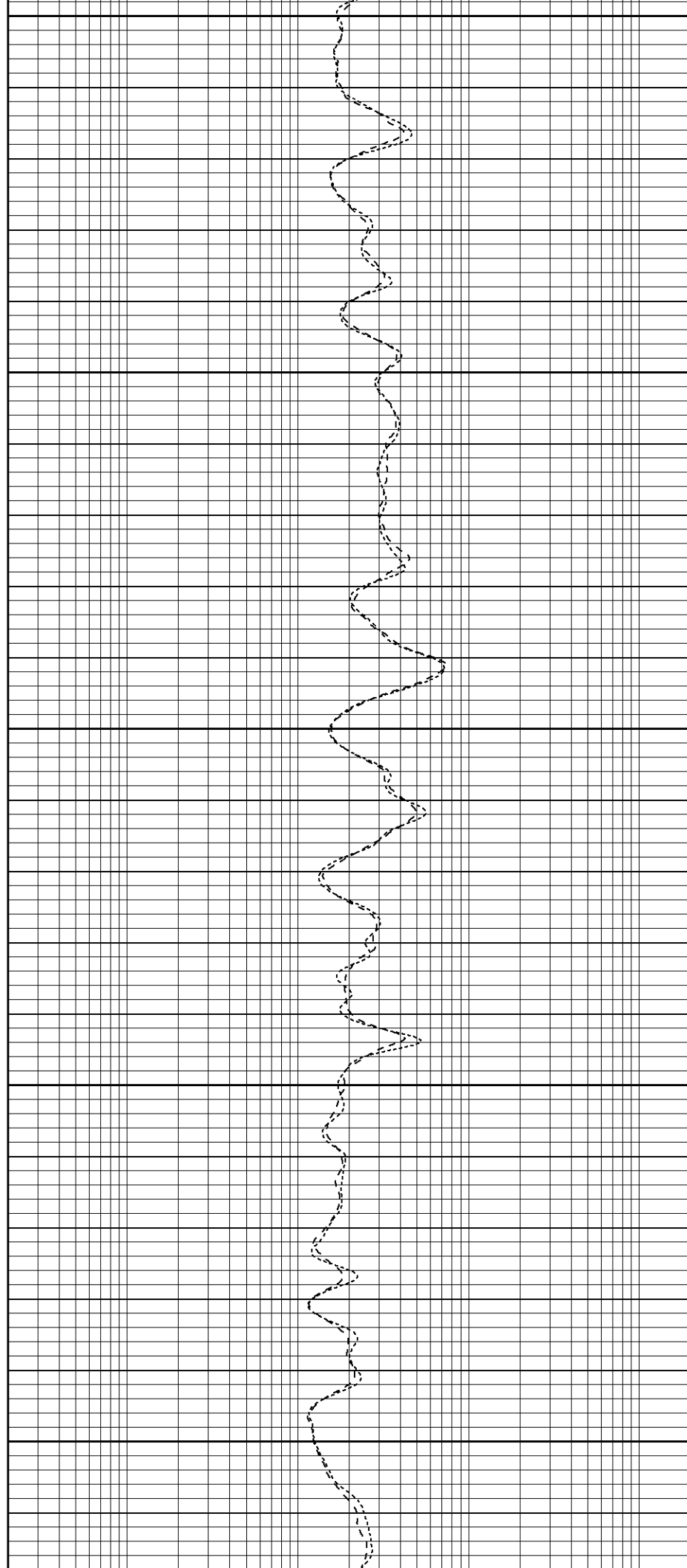
1050

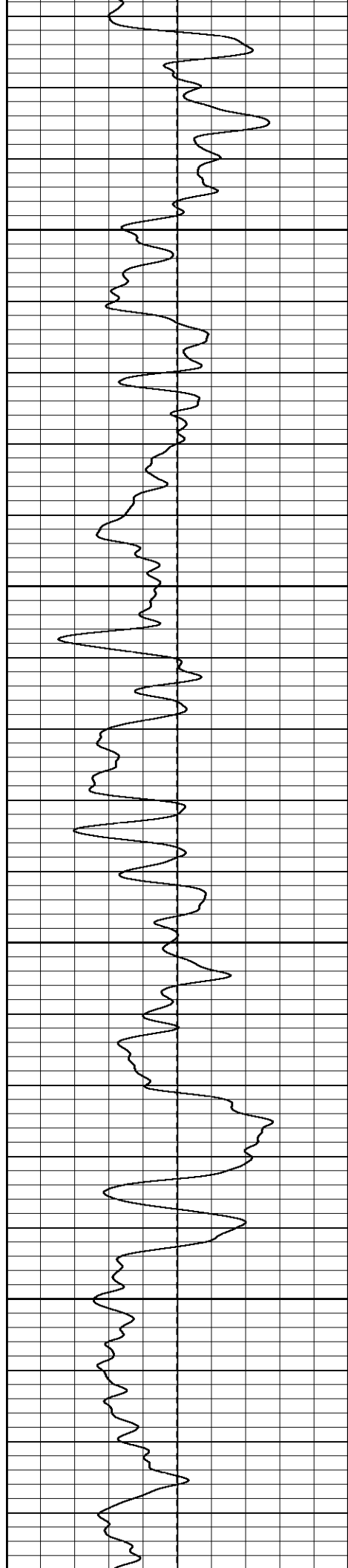
1100

1150

1200

1250



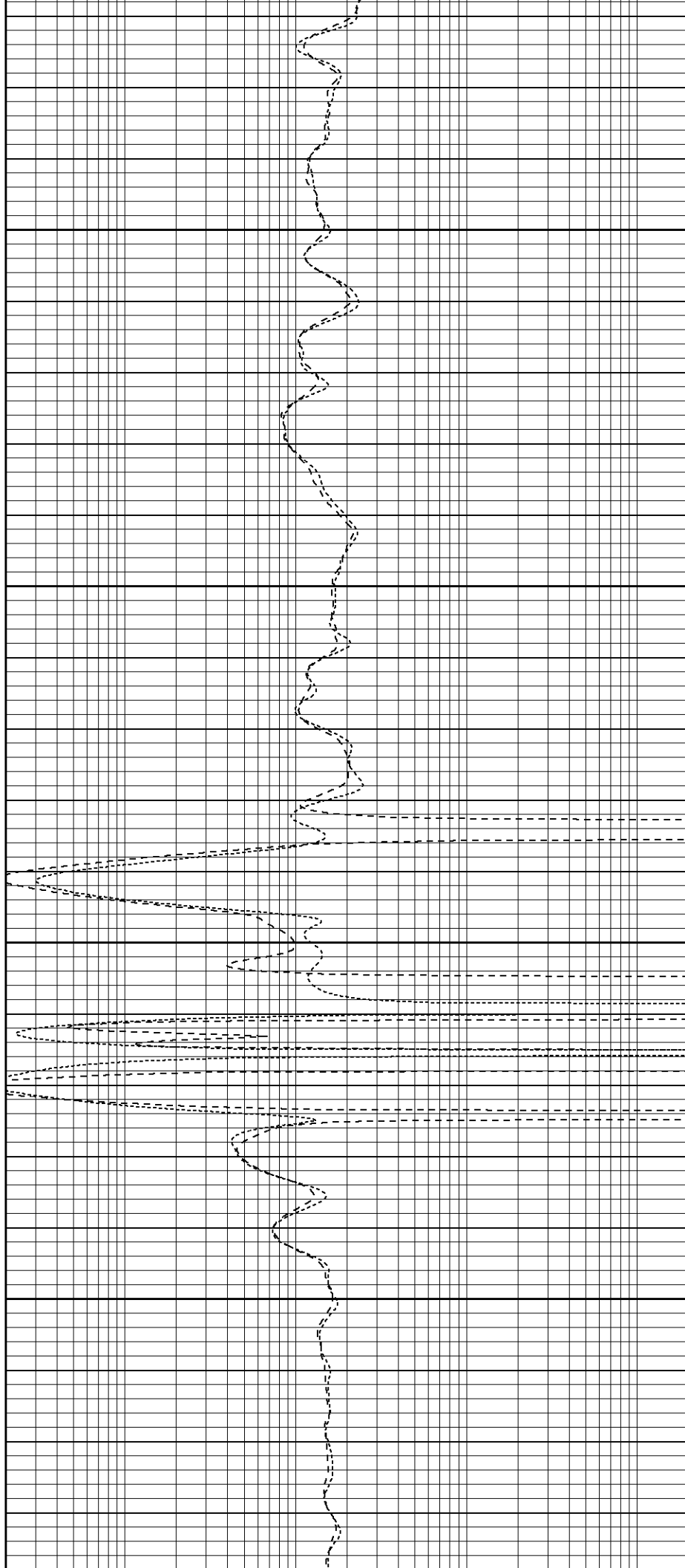


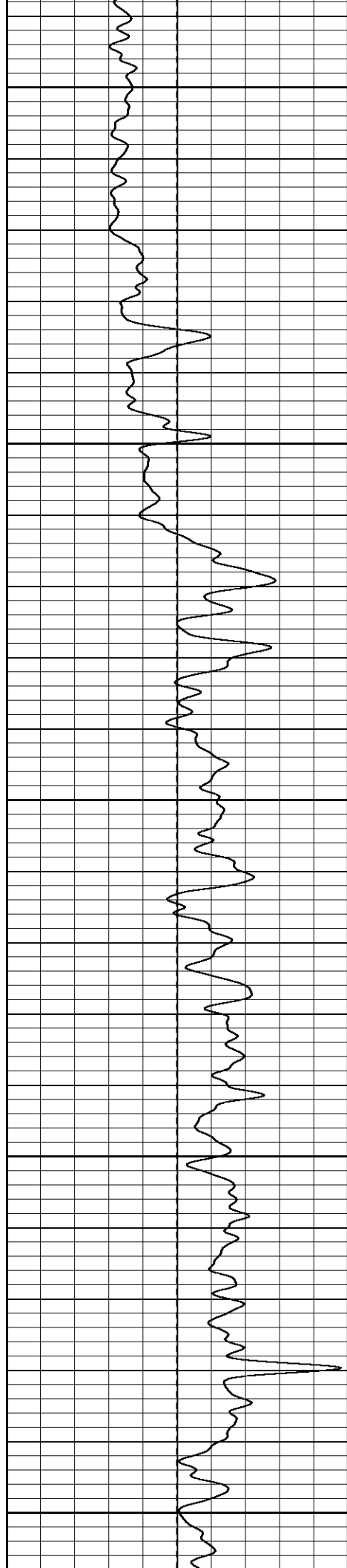
1300

1350

1400

1450





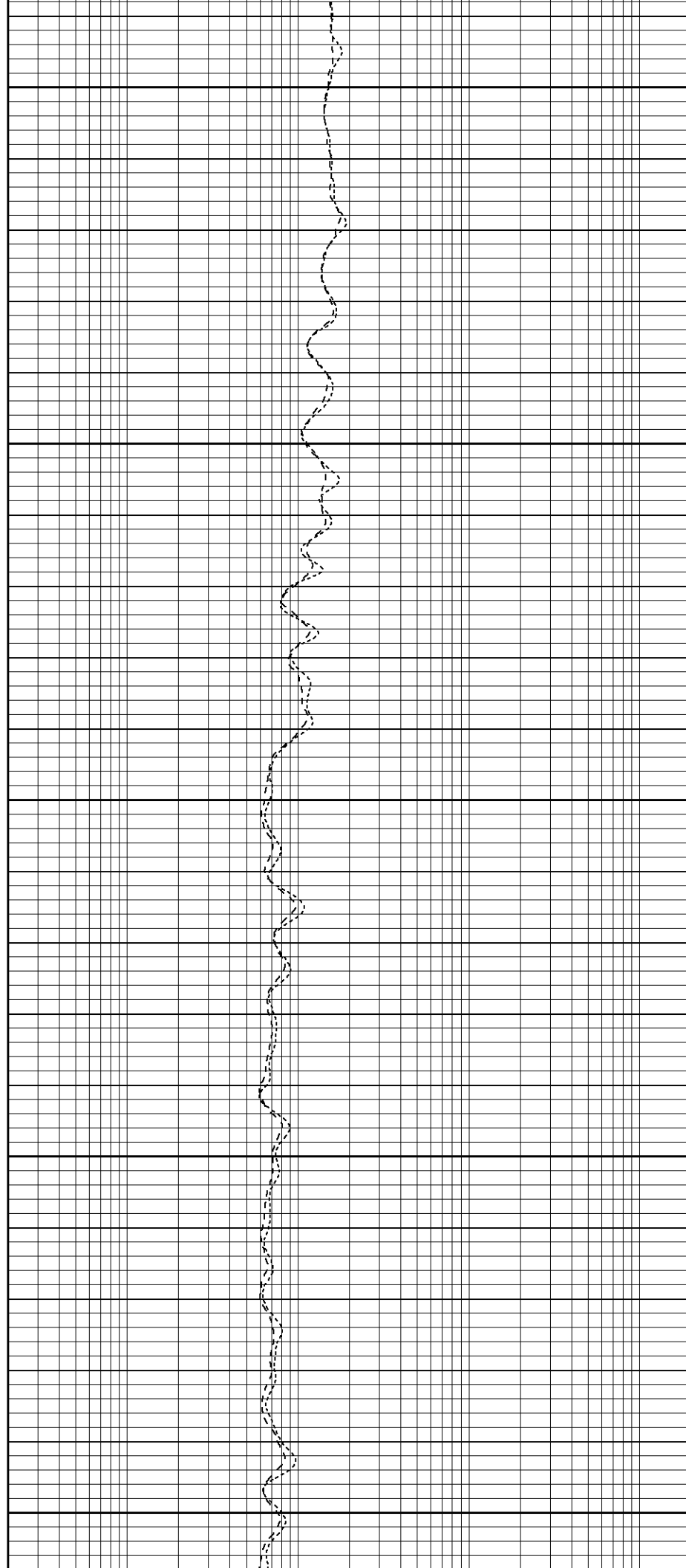
1500

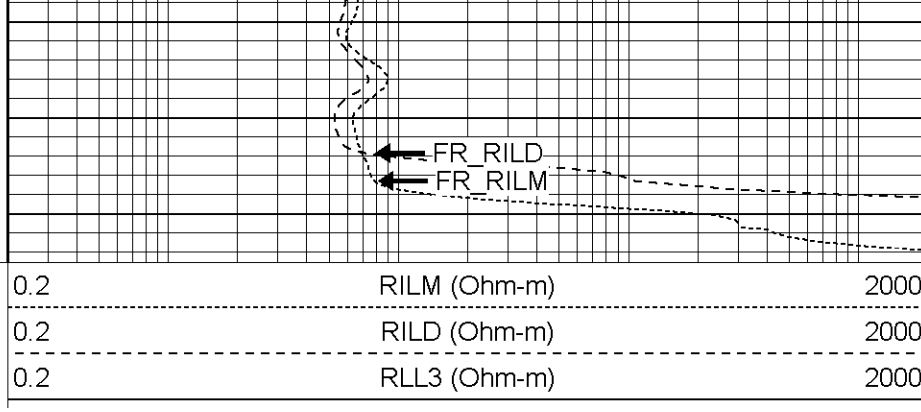
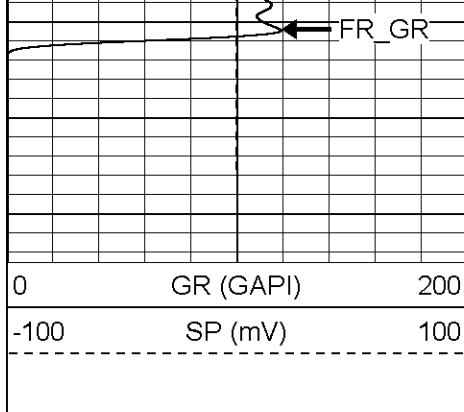
1550

1600

1650

1700

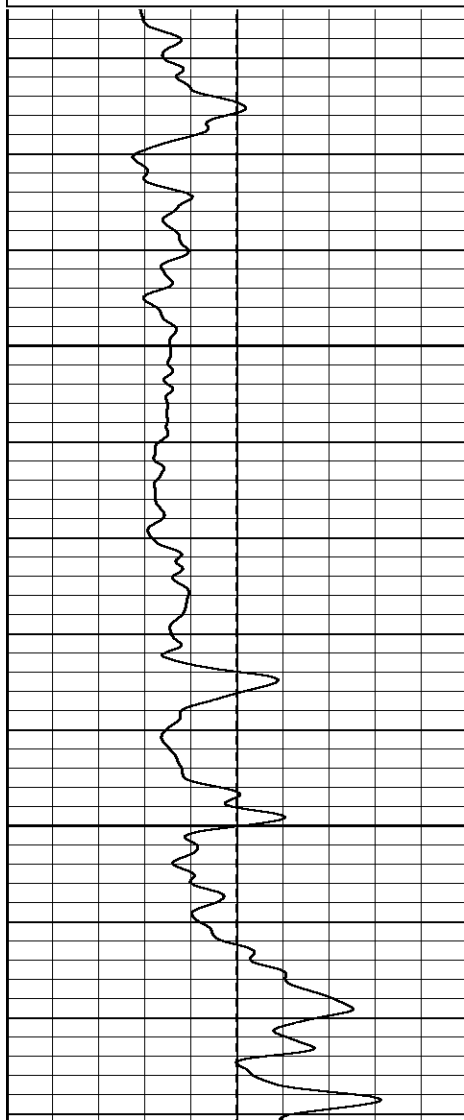
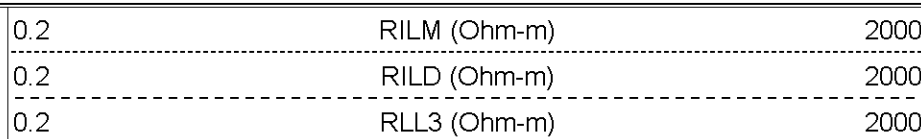
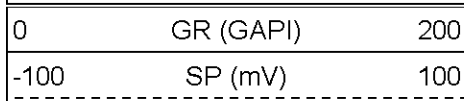




Patterson

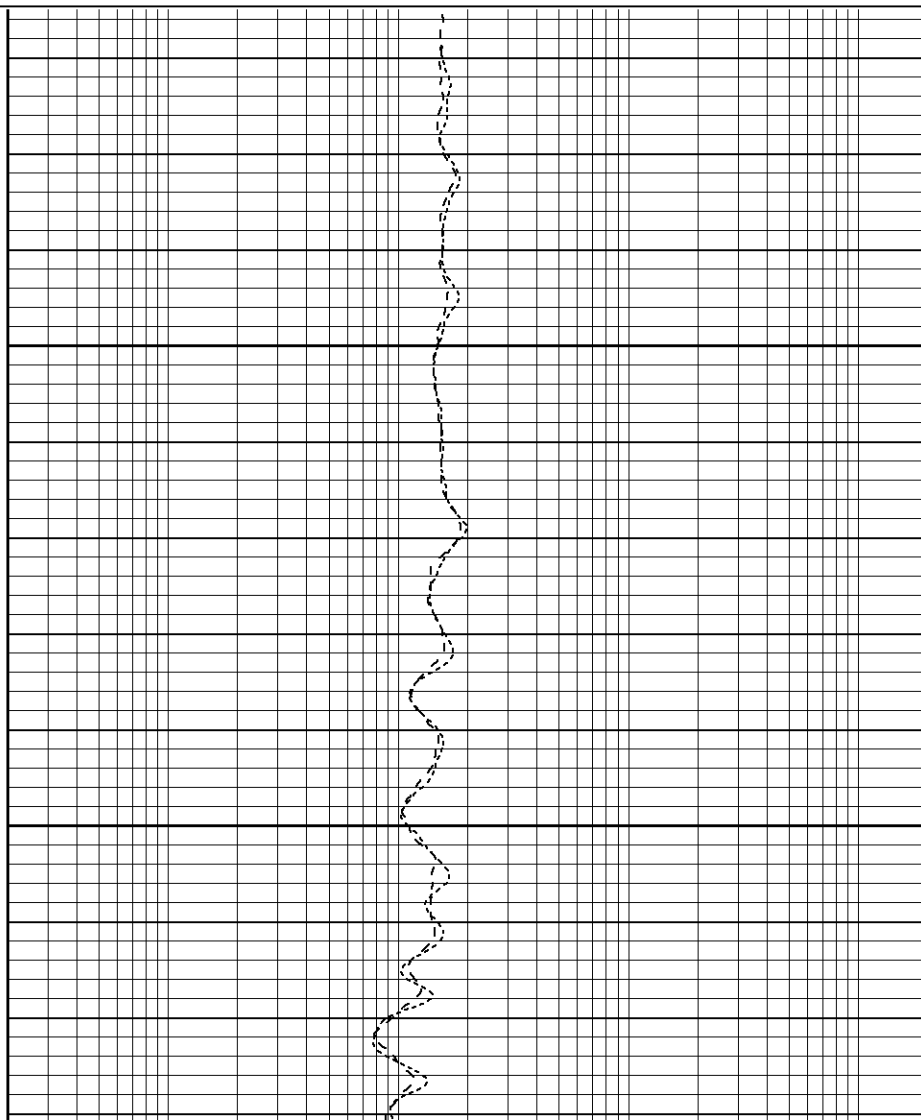
Repeat Section

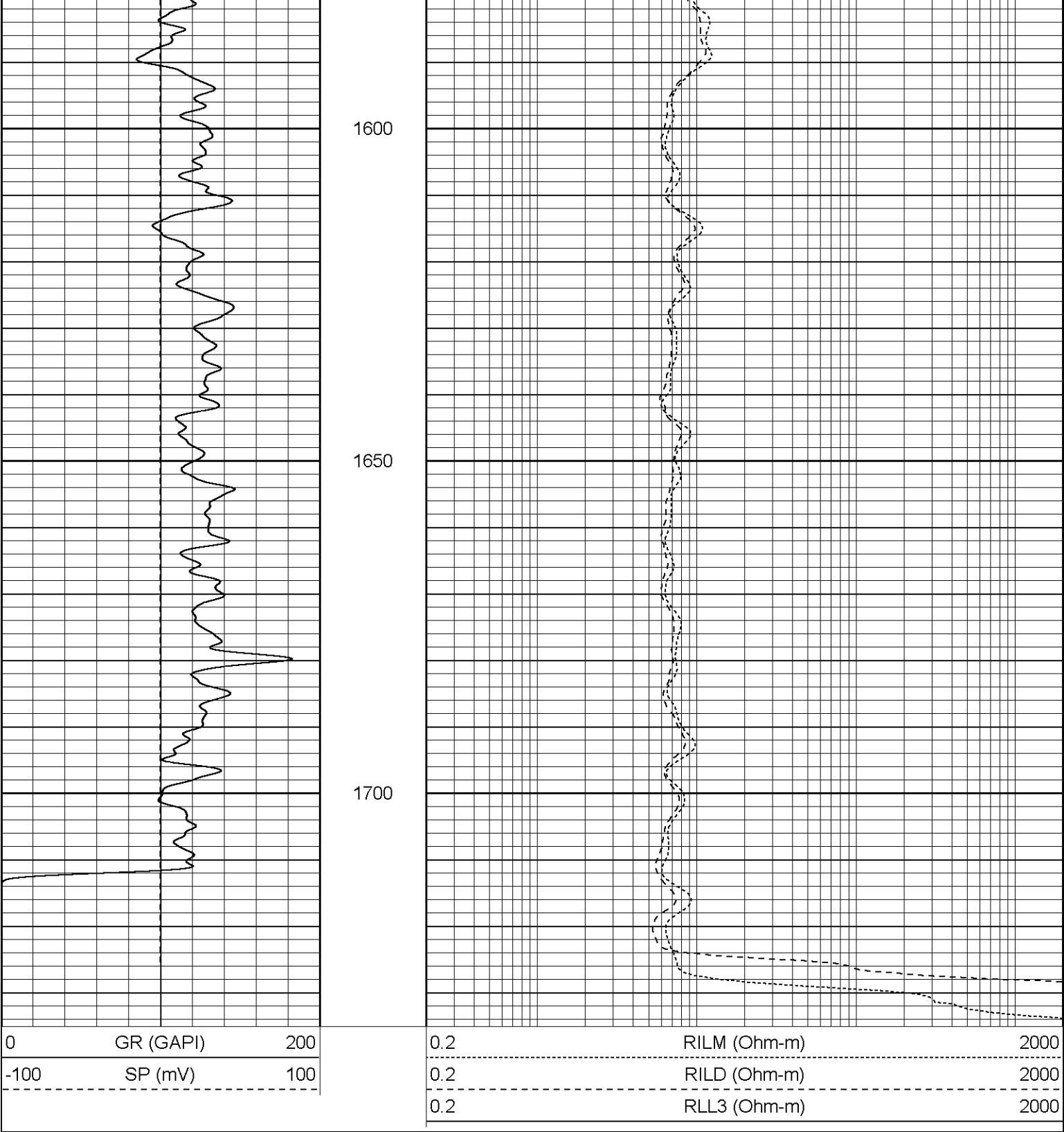
Database File: xtoac2316.db
 Dataset Pathname: pass1.1
 Presentation Format: dil
 Dataset Creation: Mon Mar 06 17:48:44 2006 by Calc Warrior 7.0 STD Ope
 Charted by: Depth in Feet scaled 1:240



1500

1550

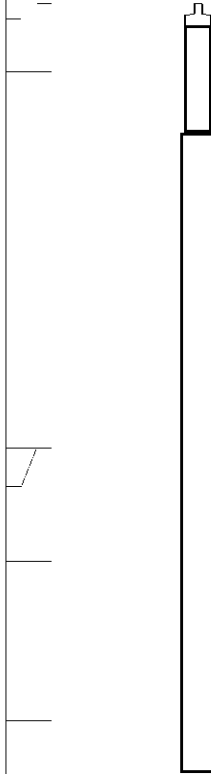




Dual Induction Calibration Report								
Serial-Model:			5375-G					
Surface Cal Performed:			Mon Feb 13 13:52:53 2006					
Downhole Cal Performed:			Tue Feb 14 23:23:54 2006					
Surface Calibration								
Readings			References			Results		
Loop:	Air	Loop		Air	Loop		m	b
Deep	0.000	0.633	V	0.000	500.000	mmho-m	789.538	0.000
Multi	0.000	0.750	V	0.000	500.000	mmho-m	789.538	0.000

Medium	-0.010	0.752	V	0.000	550.000	mmho-m	722.258	7.223
Internal:	Zero	Cal		Zero	Cal		m	b
Deep	0.012	0.636	V	0.000	500.000	mmho-m	800.610	-9.578
Medium	0.016	0.752	V	0.000	550.000	mmho-m	747.389	-12.066
Downhole Calibration								
	Readings			References			Results	
Internal:	Zero	Cal		Zero	Cal		m	b
Deep	1.512	503.799	mmho-m	0.280	502.577	mmho-m	1.000	-1.232
Medium	0.922	551.464	mmho-m	0.370	550.401	mmho-m	0.999	-0.551
Shallow	2.522	0.024	V	500.000	2.000	Ohm-m	199.331	-3.000

Gamma Ray Calibration Report								
Serial Number:	2001							
Tool Model:	OH							
Performed:	Tue Feb 14 10:15:47 2006							
Calibrator Value:	1.0			GAPI				
Background Reading:	0.0			cps				
Calibrator Reading:	1.0			cps				
Sensitivity:	0.2000			GAPI/cps				

Sensor	Offset (ft)	Schematic	Description	Len (ft)	OD (in)	Wt (lb)	
CHD	25.08		None	0.75	1.50	5.00	
GR	22.83		GR-OH (2001) SIE	3.50	3.25	40.00	
CILD SP	10.60 10.60		DIL-G (5375) Gearhart	20.83	4.00	345.00	
CILM	6.89						
RLL3	1.70						
Dataset:			/field/well/run1/_plots/_jobs_/dil				
Total Length:			25.08 ft				
Total Weight:			390.00 lb				
O.D.			4.00 in				