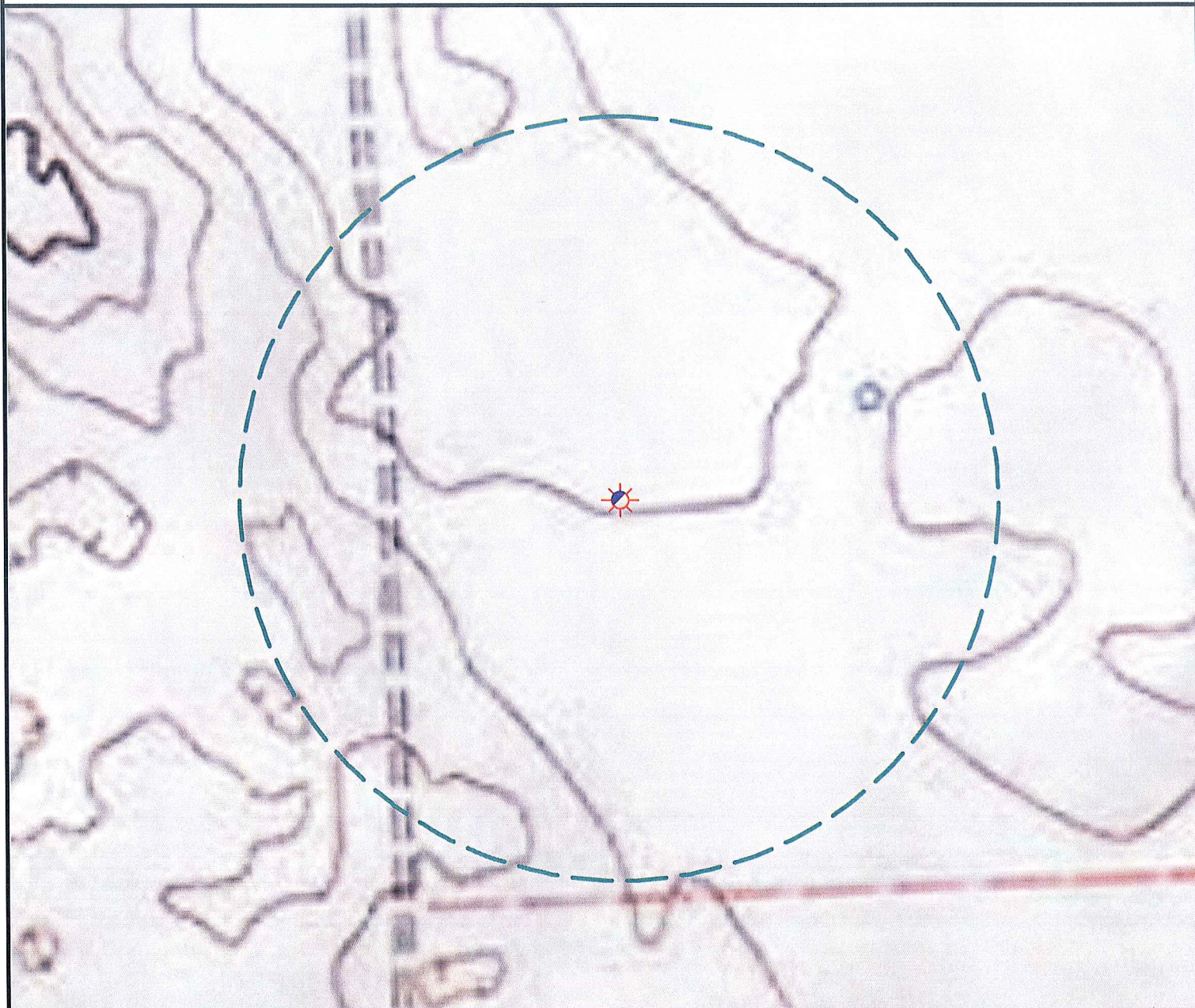


# Hydrology Map



There are no surface waters within a 1000' radius of the proposed oil & gas location.



## Legend

- |  |                      |  |                       |
|--|----------------------|--|-----------------------|
|  | Proposed Well        |  | Building/Residence    |
|  | Existing Well        |  | Oil & Gas Equipment   |
|  | Water Well           |  | Water Body            |
|  | Pedestal             |  | Utility Box           |
|  | CattleGuard/Gate     |  | Railroad              |
|  | Bridge               |  | Fence                 |
|  | ECD                  |  | Overhead Power Line   |
|  | 1000' Radius         |  | Pipeline              |
|  | Facilities Enclosure |  | Access Road           |
|  |                      |  | Ditch/Canal           |
|  |                      |  | Concrete Walled Ditch |

## 1000ft Radius Map of Surface Water and Riparian Areas

### KERBS L&C 17-05

Surface Location: T1S R45W S17

Field Date: 12/11/2009  
 Drawing Date: 12/19/2009  
 Drafter: JMK  
 Checked By: MPS

Prepared for:  
 Rosetta Resources  
 Operating LP  
 717 Texas Avenue, Ste. 2800  
 Houston, TX 77002



Use our resources to find yours!  
[www.petro-fs.com](http://www.petro-fs.com)

1801 W. 13th Ave Denver, CO 80204 (303) 928-7128  
 111 E. Third Street Suite 207 Rifle, CO 81650 (970) 625-4740