



SUPERIOR
WELL SERVICES
Black Lick, Pa.
Mercer, Pa.
Wooster, Oh.
Cleveland, Ok.
Trinidad, Co.

CEMENT BOND LOG

Company XTO Energy Inc.
Well Hill Ranch 25-14
Field Purgatoire River
County Las Animas State Colorado

Location: API # : 05 071 09340 00

224' FSL & 1674 FWL'

SEC 25 TWP 34S RGE 67W

Permanent Datum Ground Level Elevation 7660'
Log Measured From Ground Level
Drilling Measured From Ground Level

Other Services
Elevation
K.B. -----
D.F. -----
G.L. 7660'

Date 9-06-07

Run Number	One		
Depth Driller	2350'		
Depth Logger	2214'		
Bottom Logged Interval	2212'		
Top Log Interval	Surface		
Open Hole Size	7 7/8"		
Type Fluid	Water		
Density / Viscosity	///		
Max. Recorded Temp.	124 DEG F		
Estimated Cement Top	Surface		
Time Well Ready	ROA		
Time Logger on Bottom	12:45 P.M.		
Equipment Number	T697		
Location	Trinidad		
Recorded By	M. Norton		
Witnessed By			

Borehole Record				Tubing Record			
Run Number	Bit	From	To	Size	Weight	From	To
Casing Record	Size			Wgt/Ft		Top	Bottom
Surface String	8 5/8"					00	493'
Prot. String							
Production String	5 1/2"					00	N/A
Liner							

<<< Fold Here >>>

All interpretations are opinions based on inferences from electrical or other measurements and we cannot and do not guarantee the accuracy or correctness of any interpretation, and we shall not, except in the case of gross or willful negligence on our part, be liable or responsible for any loss, costs, damages, or expenses incurred or sustained by anyone resulting from any interpretation made by any of our officers, agents or employees. These interpretations are also subject to our general terms and conditions set out in our current Price Schedule.

Comments

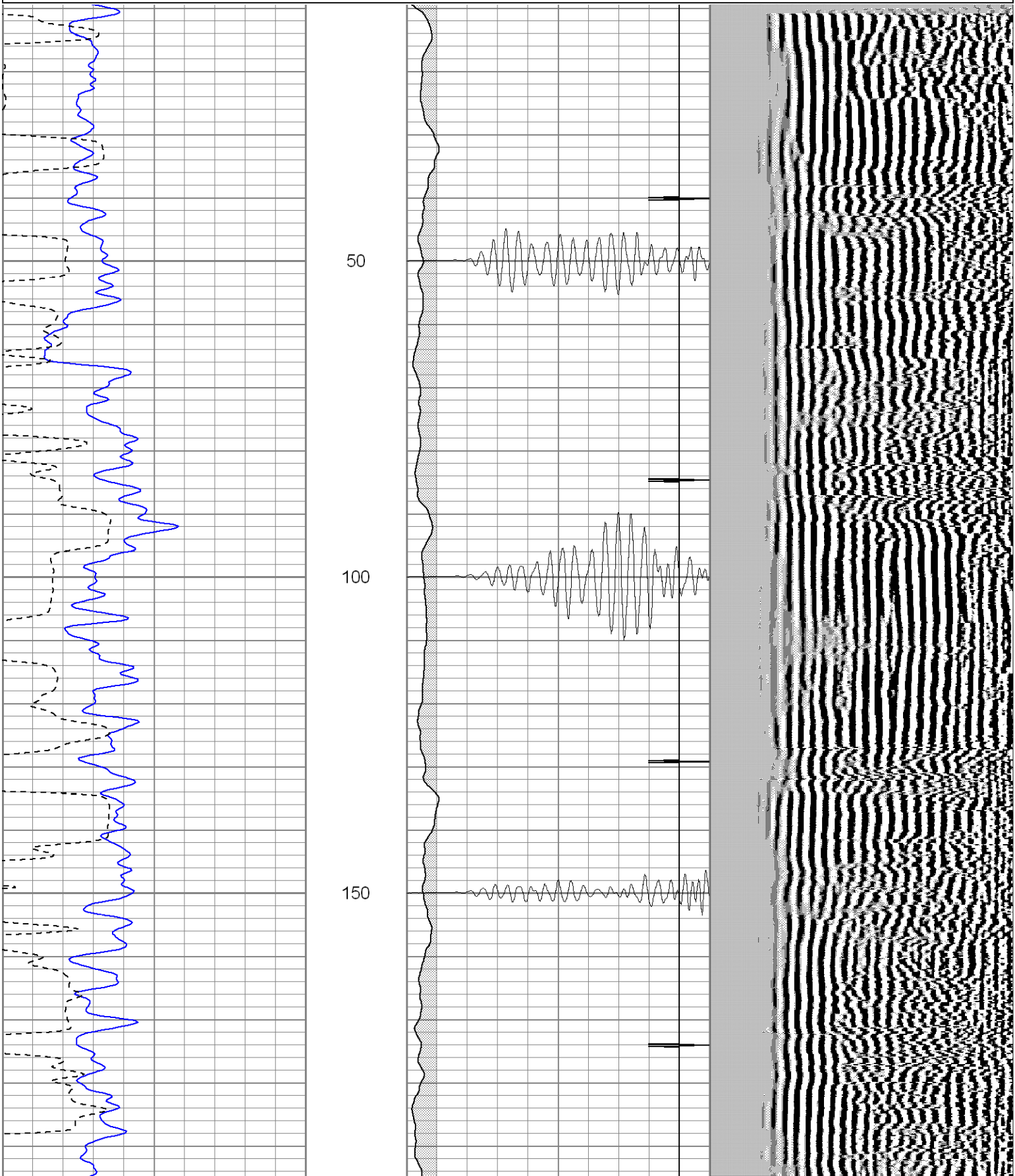
Well Directions:
Lorencito to XTO hill, third right to location.

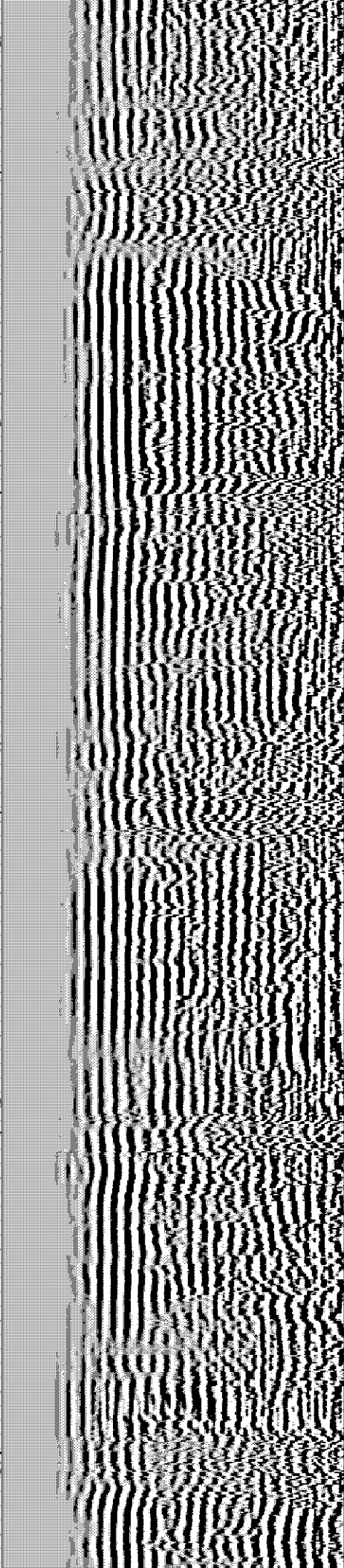
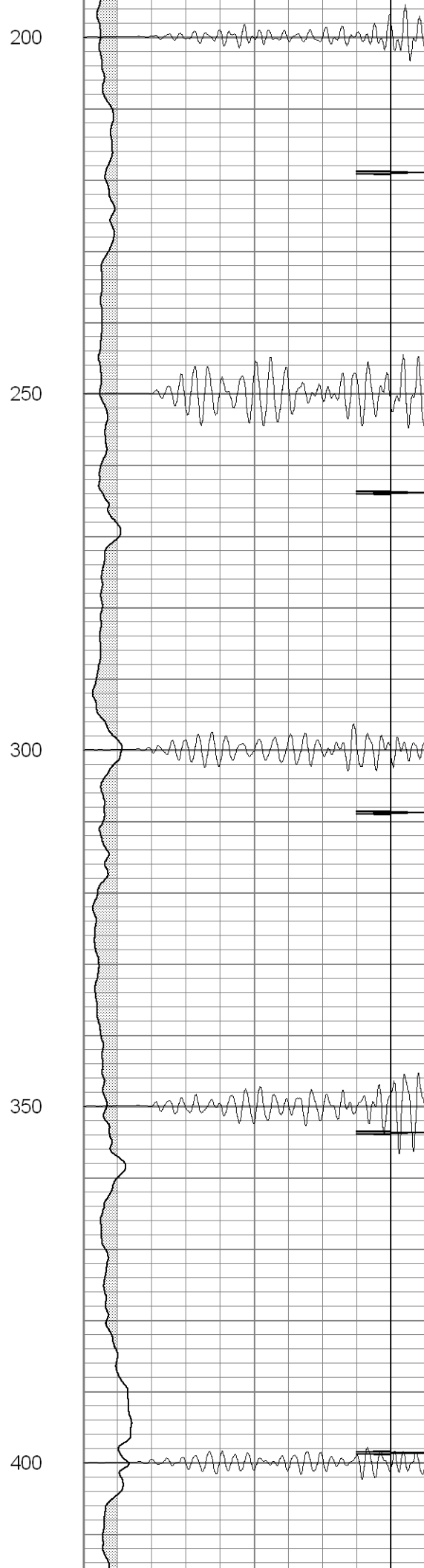
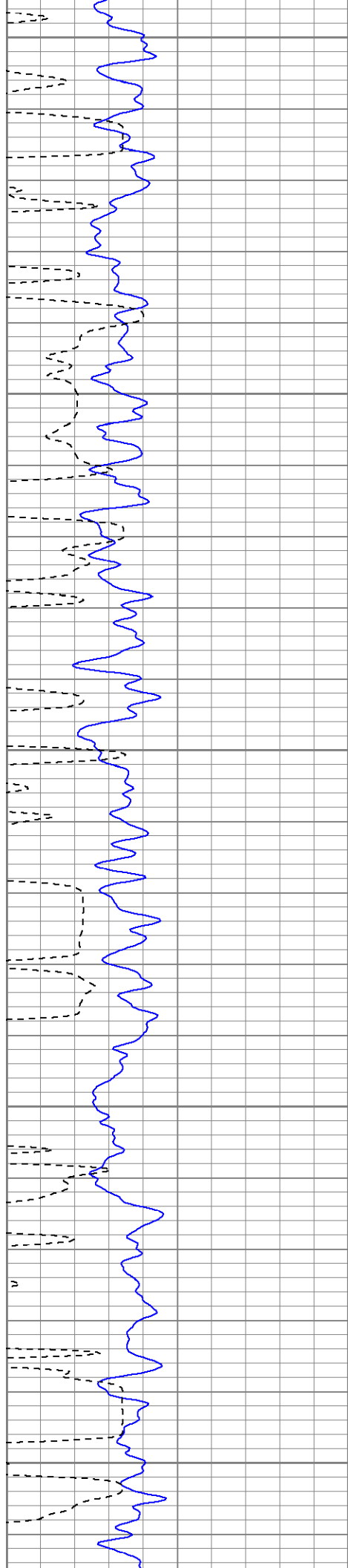


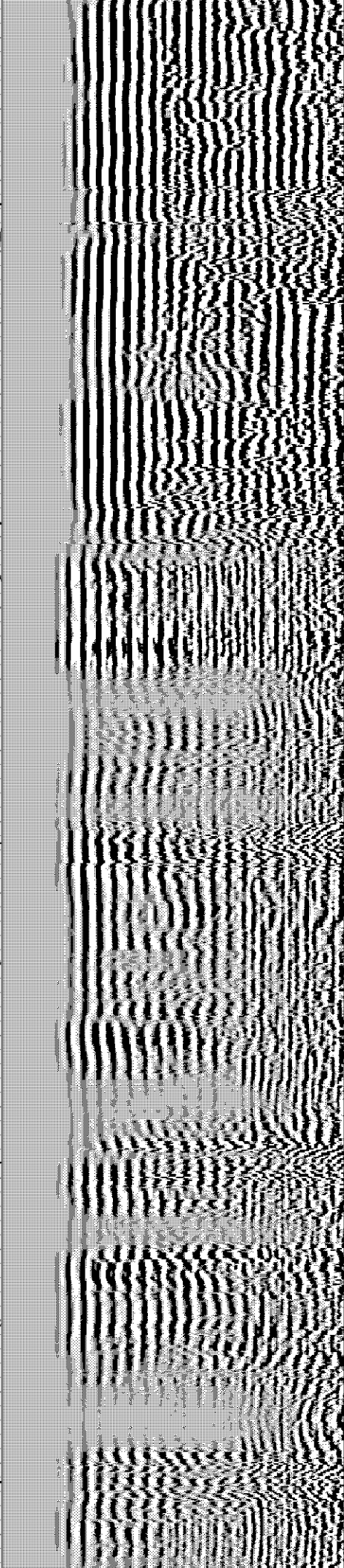
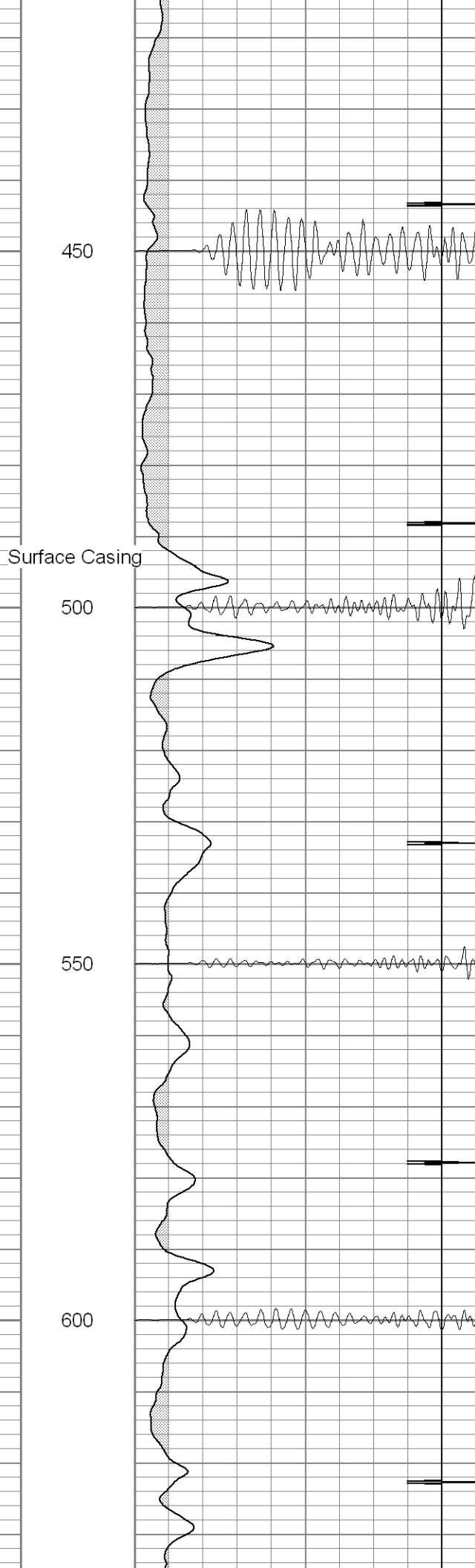
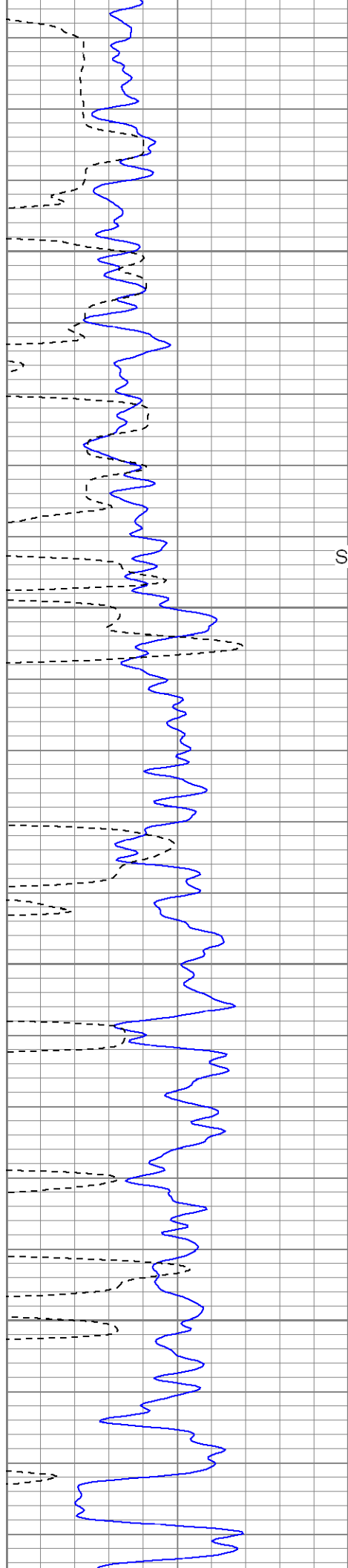
SUPERIOR
Black Lick, Pa.
Mercer, Pa.
Wooster, Oh.
Cleveland, Ok.
Trinidad, Co.

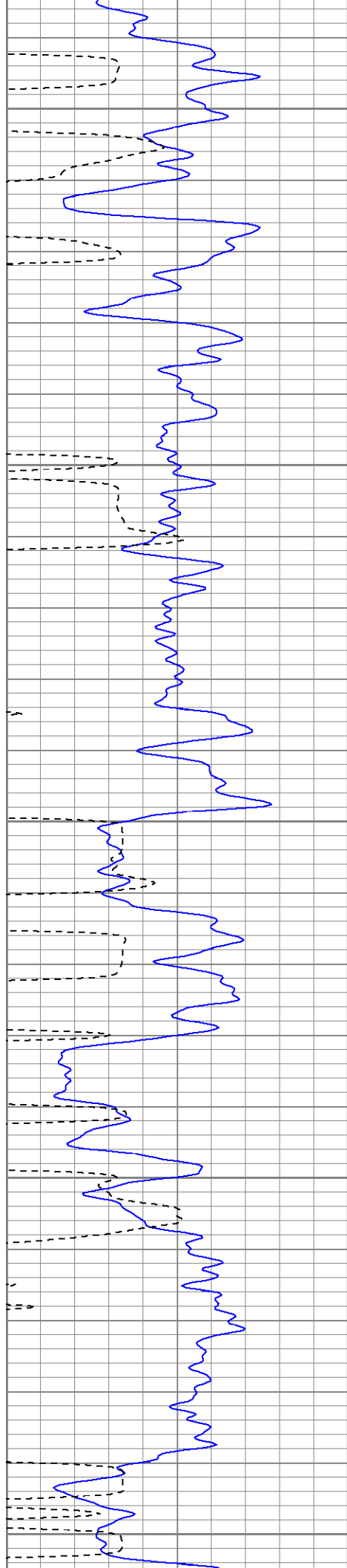
Main Pass

0	GR (GAPI)	200	0	AMP3 (mV)	100	200	Variable Density	1200
400	TT3 (usec)	200	18	CCL	-2			
			200	CBL5	1200			









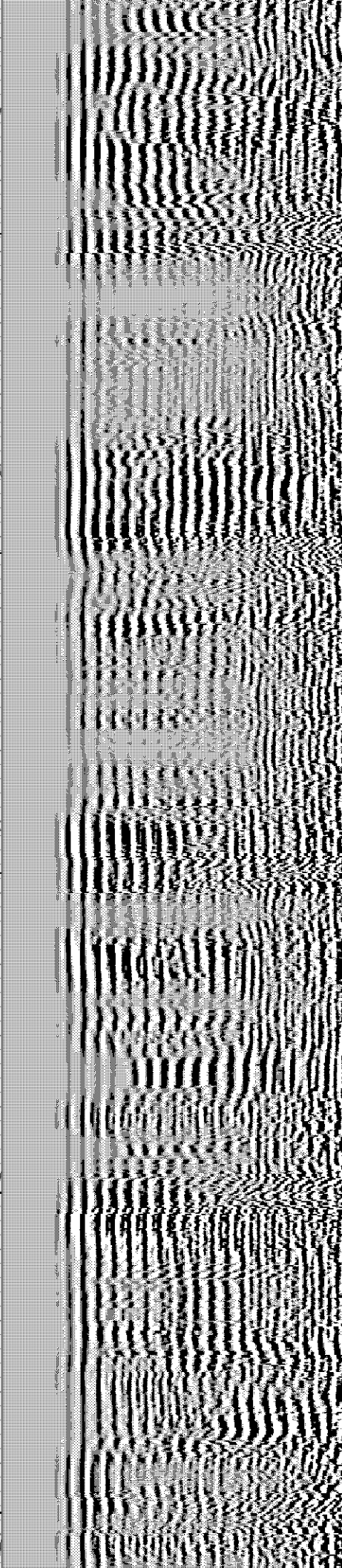
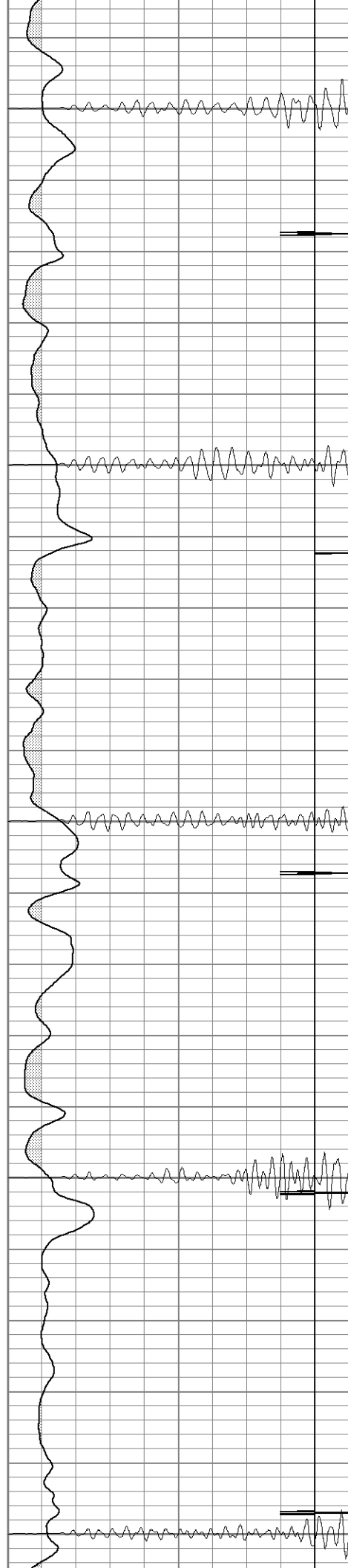
650

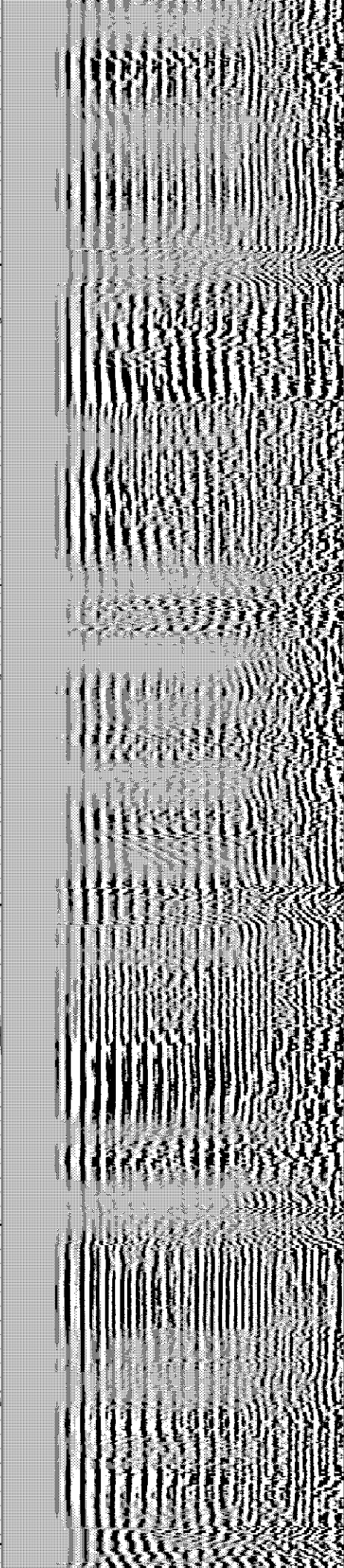
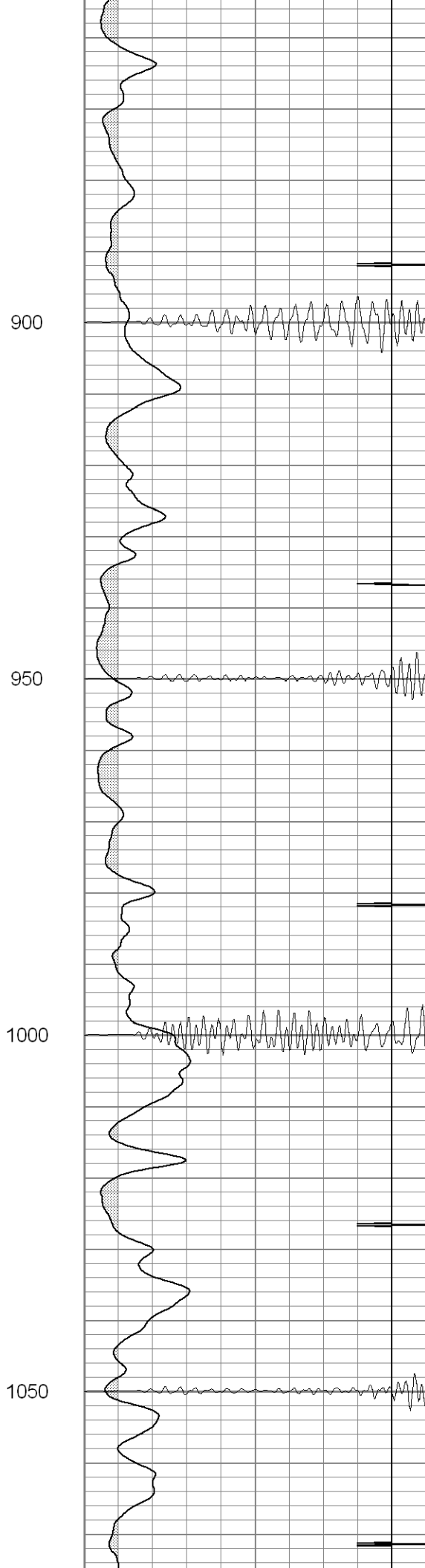
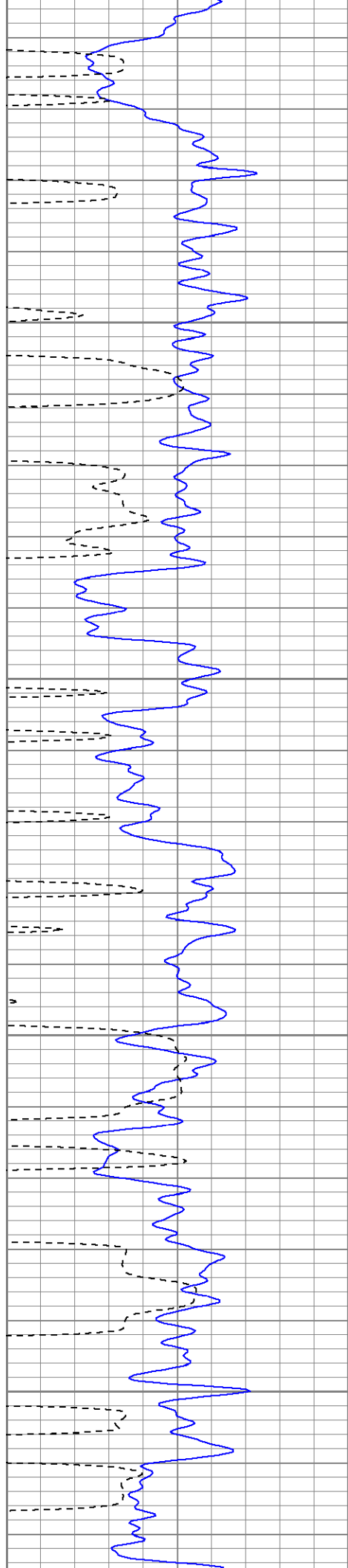
700

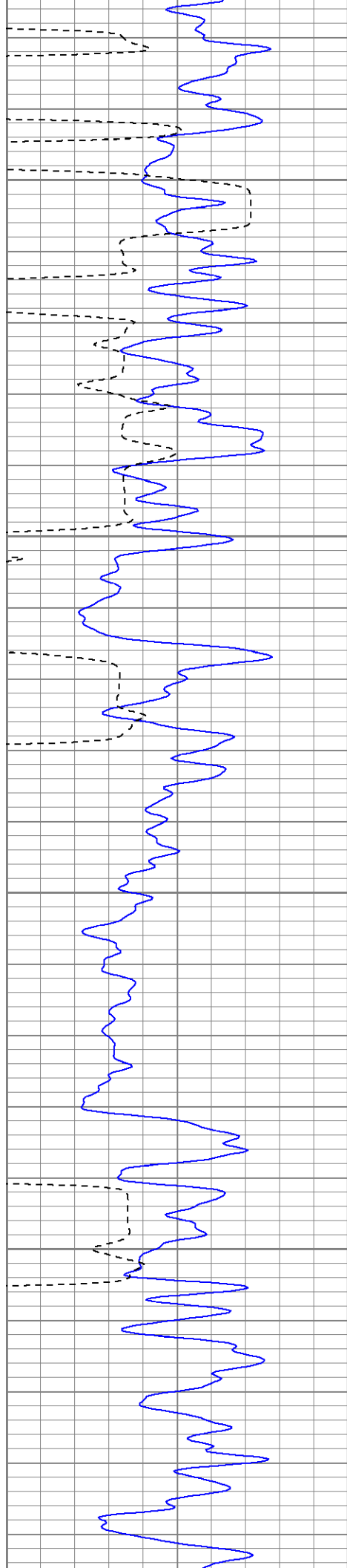
750

800

850





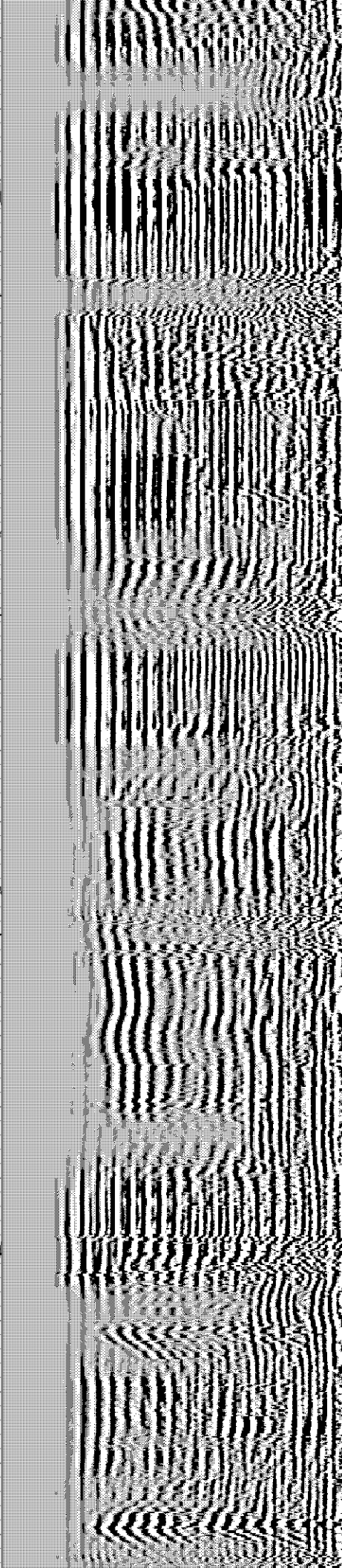
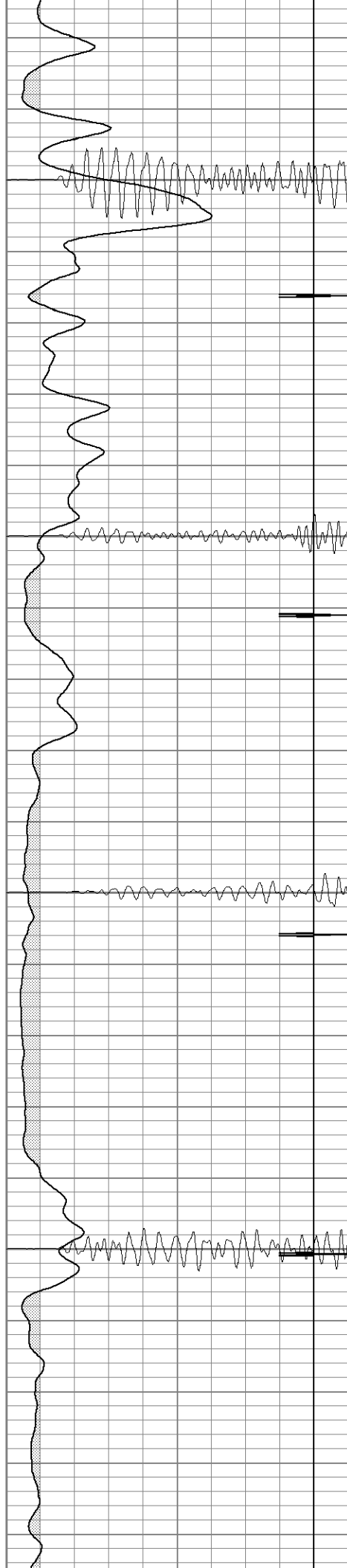


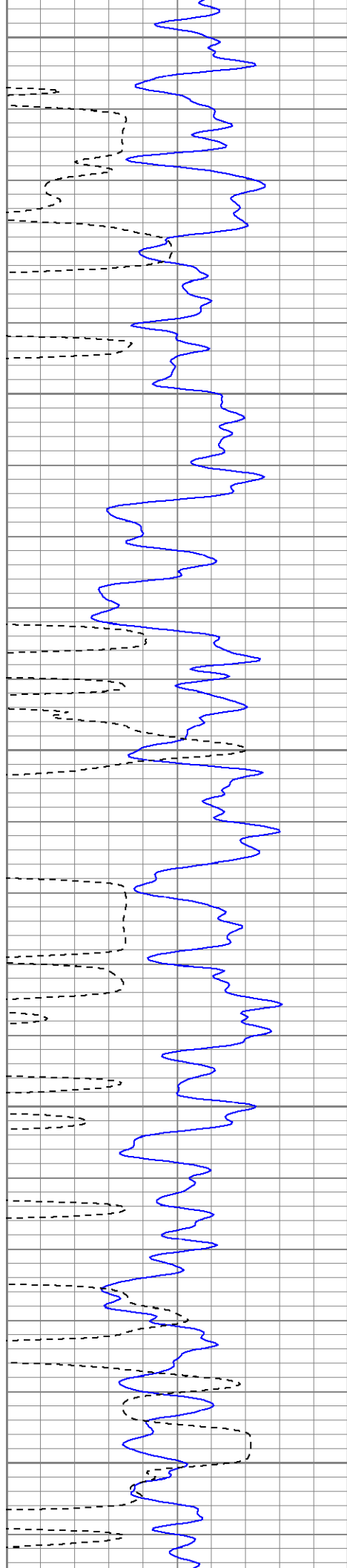
1100

1150

1200

1250





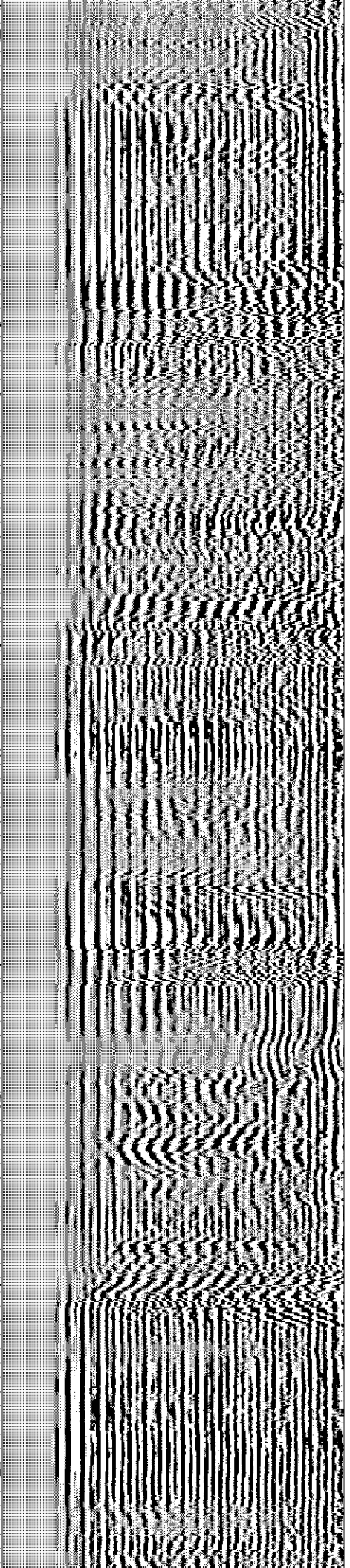
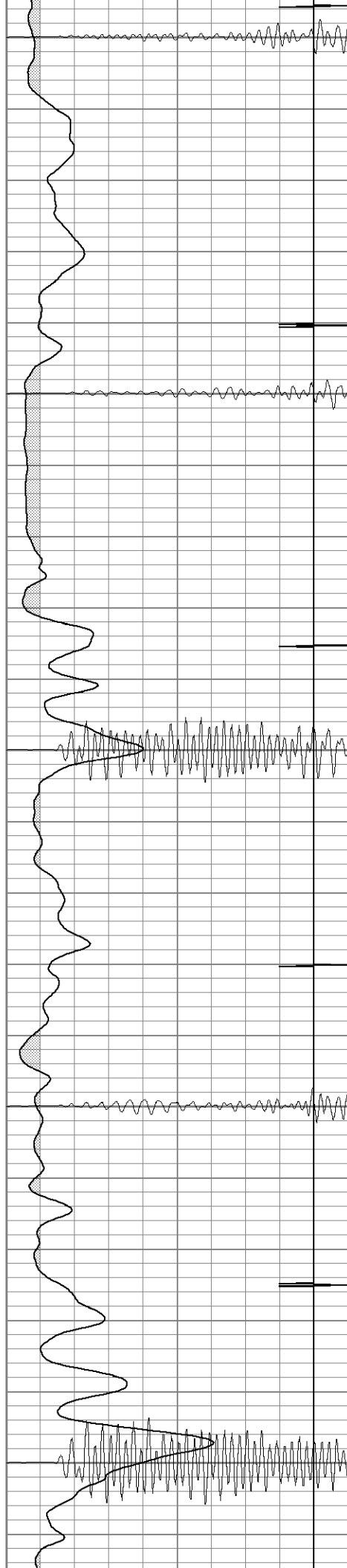
1300

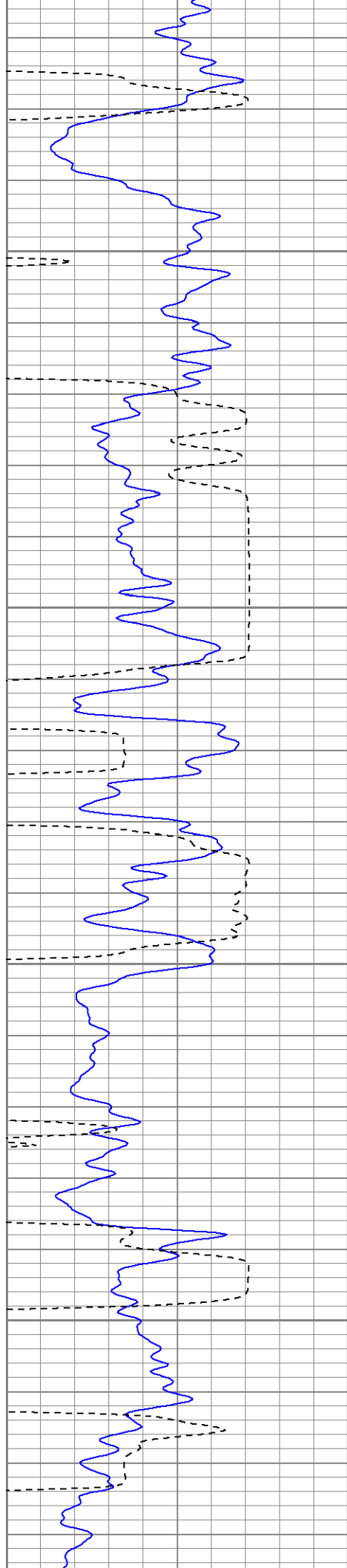
1350

1400

1450

1500



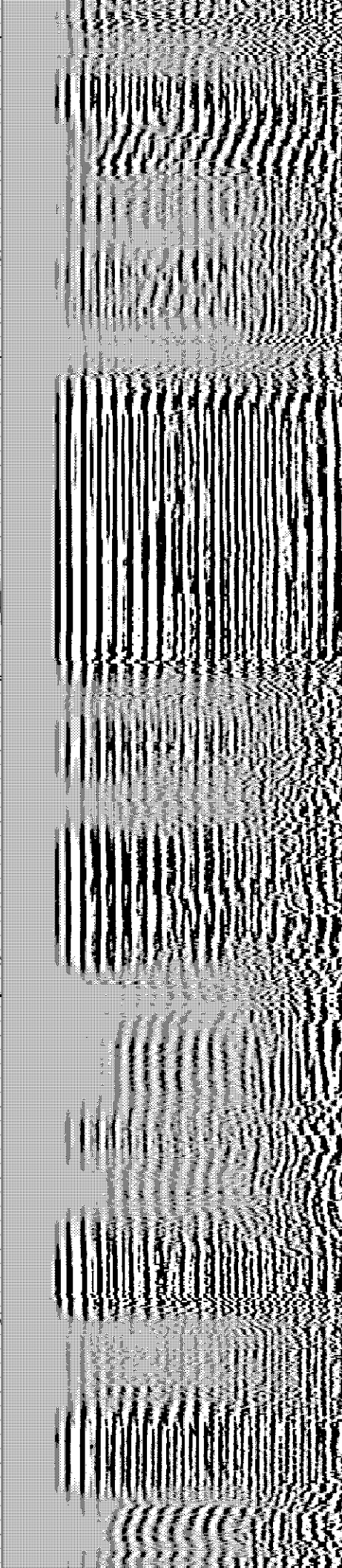
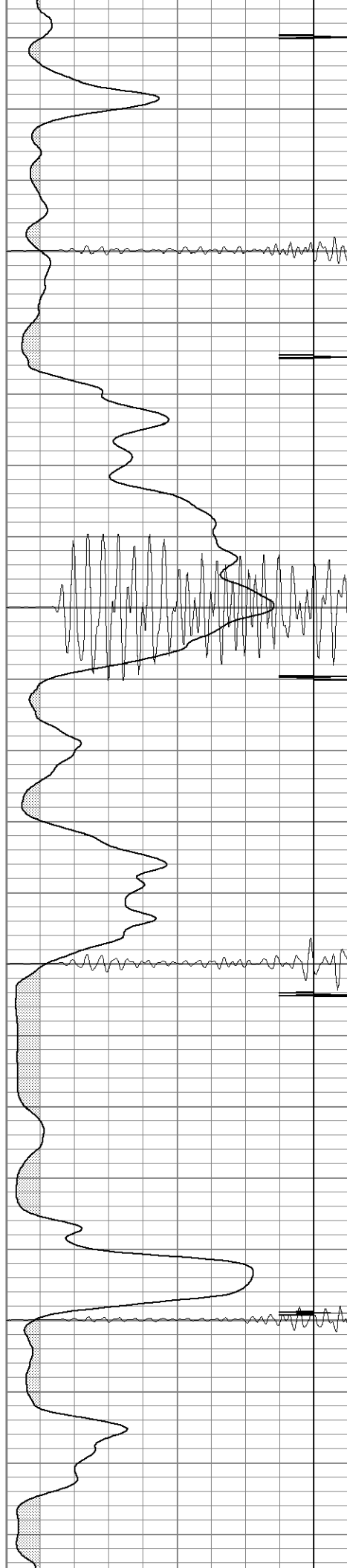


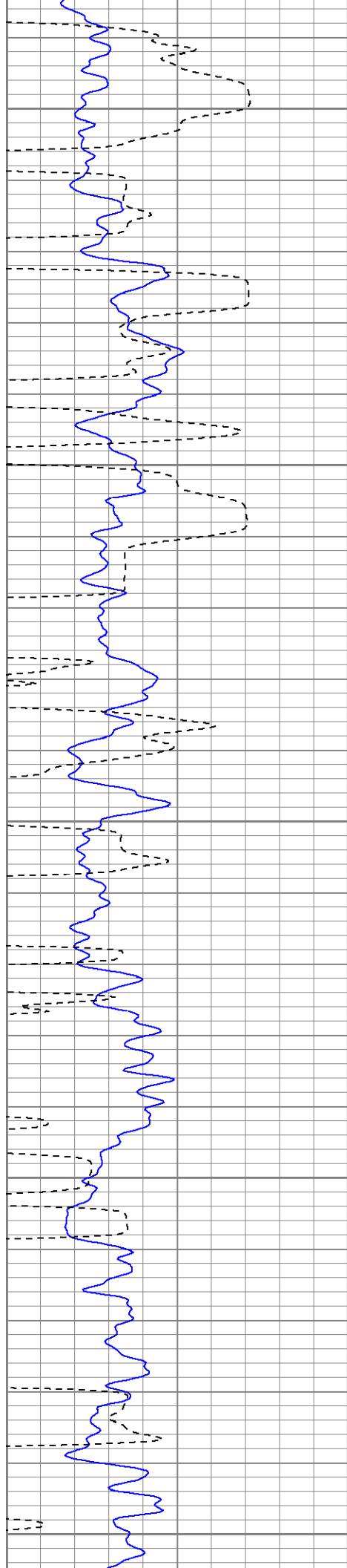
1550

1600

1650

1700





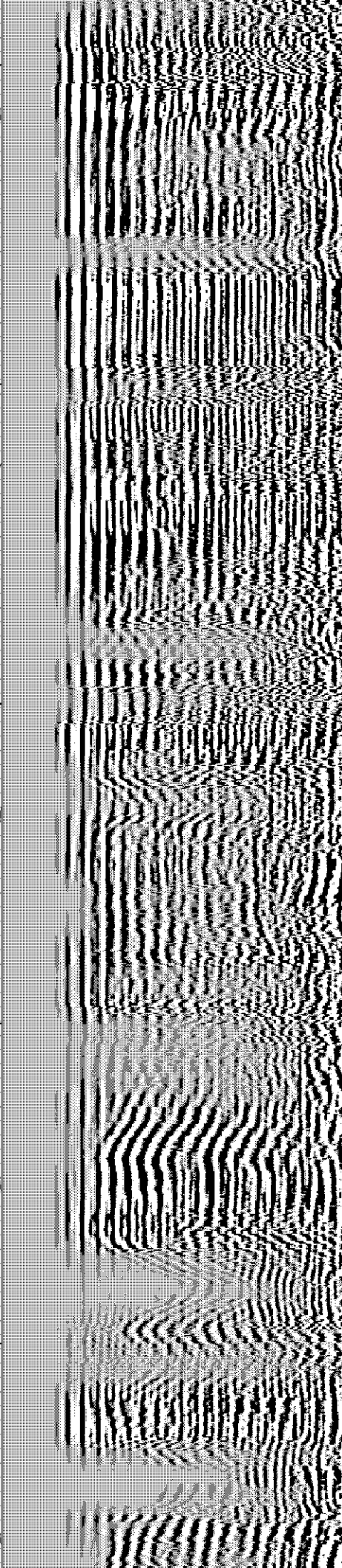
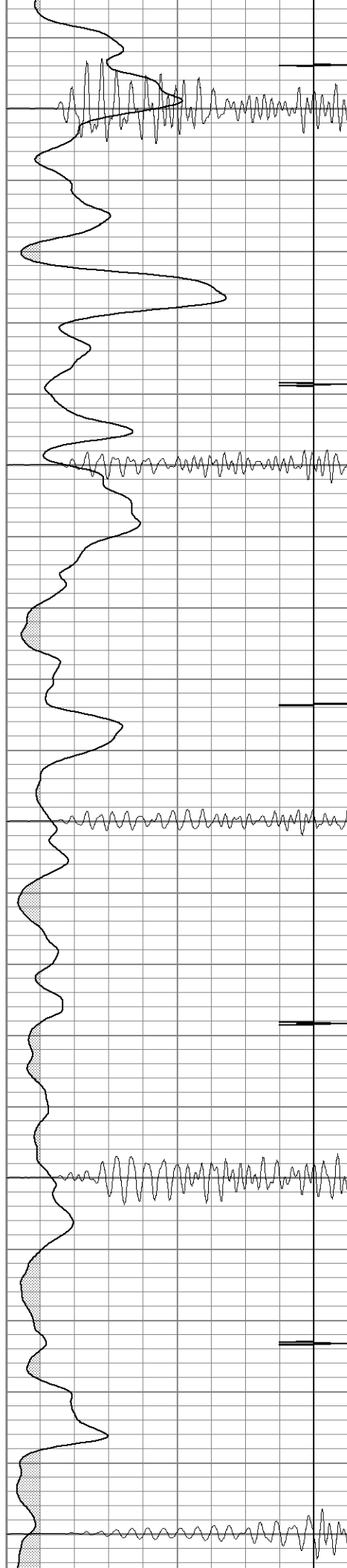
1750

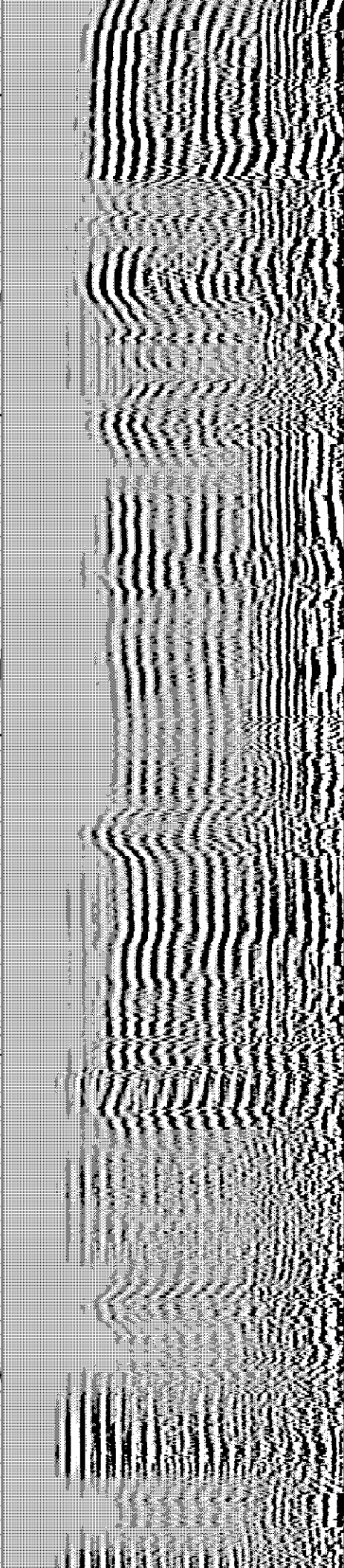
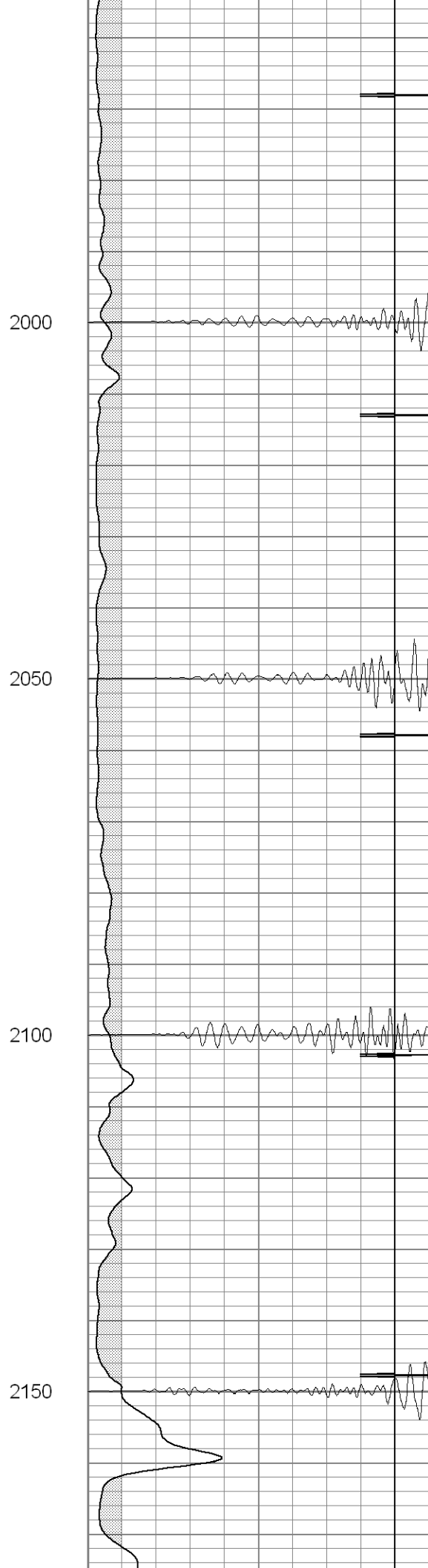
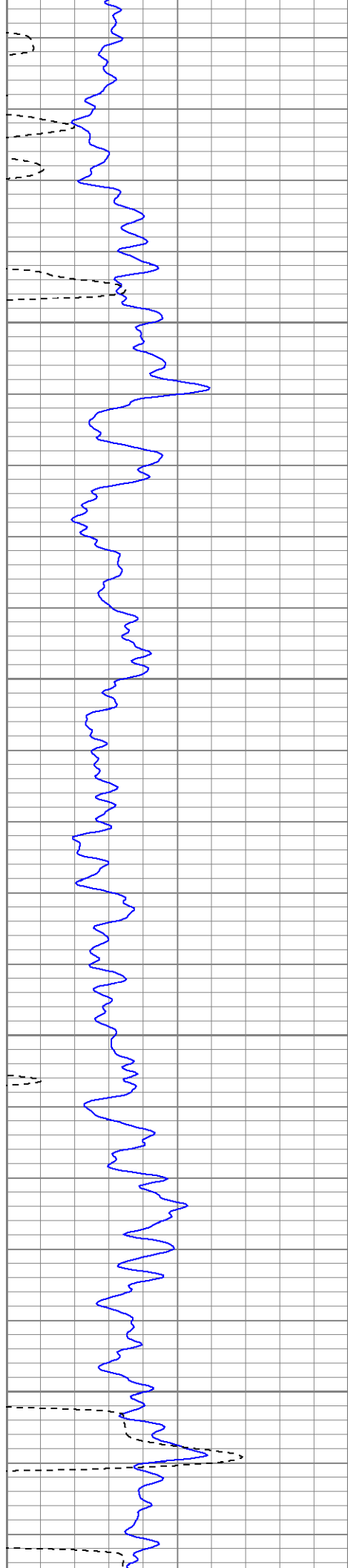
1800

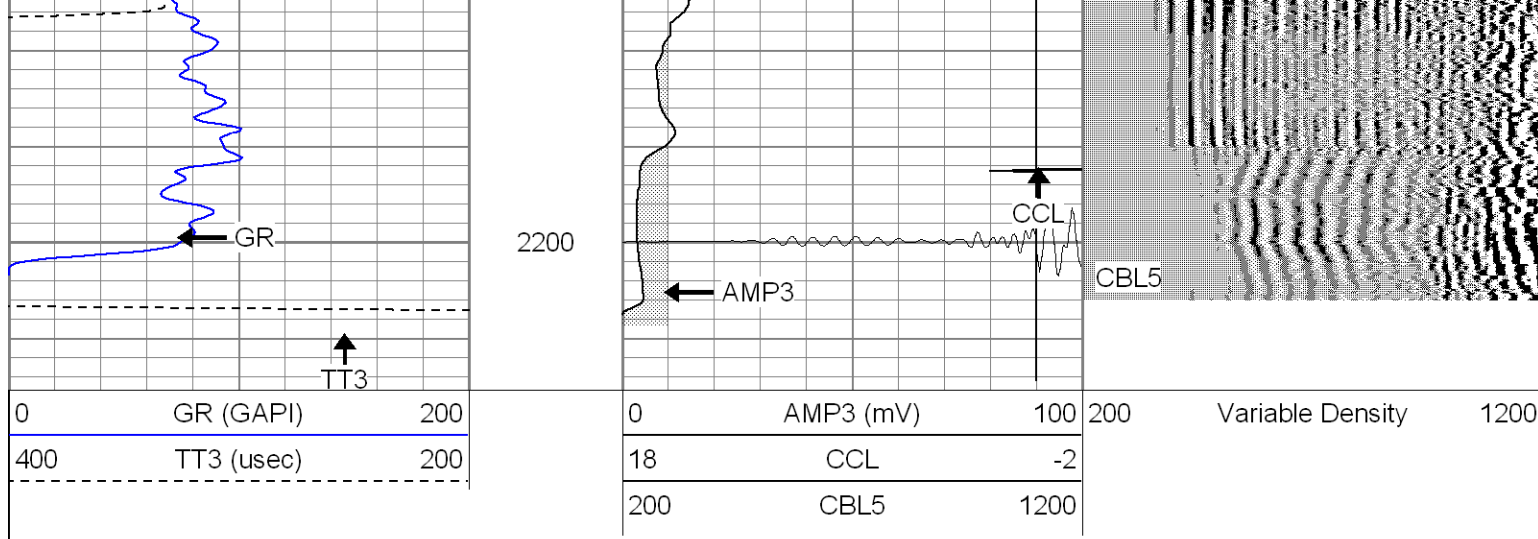
1850

1900

1950





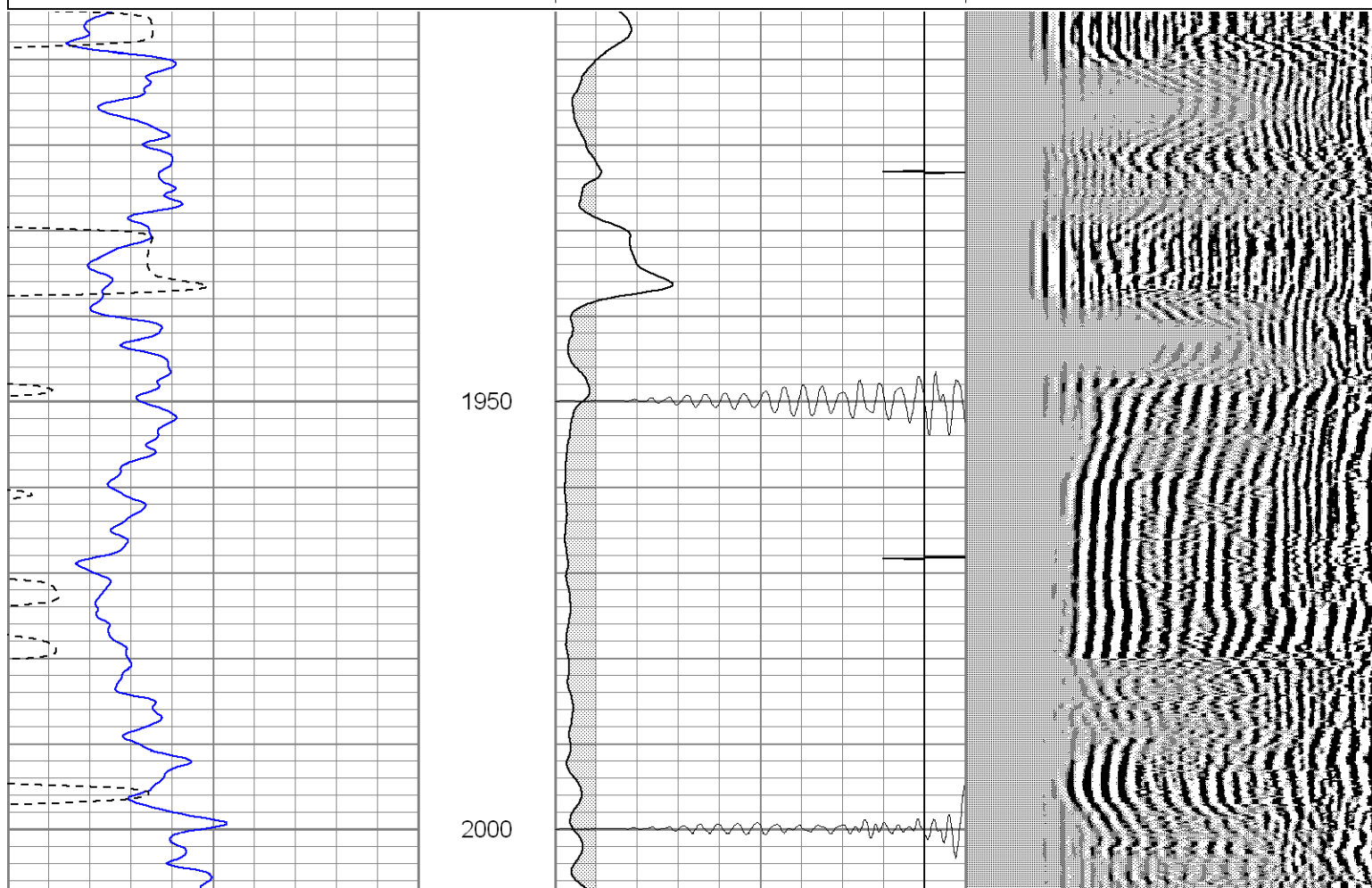
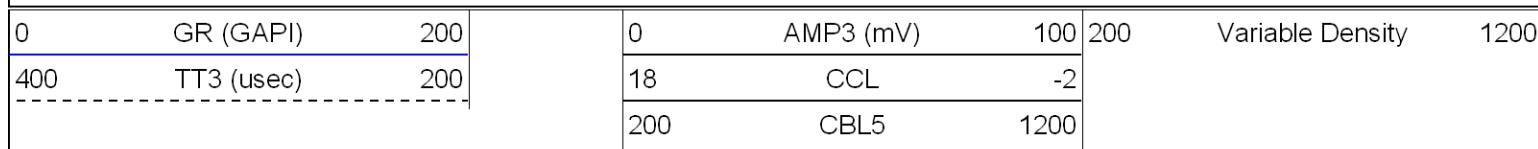


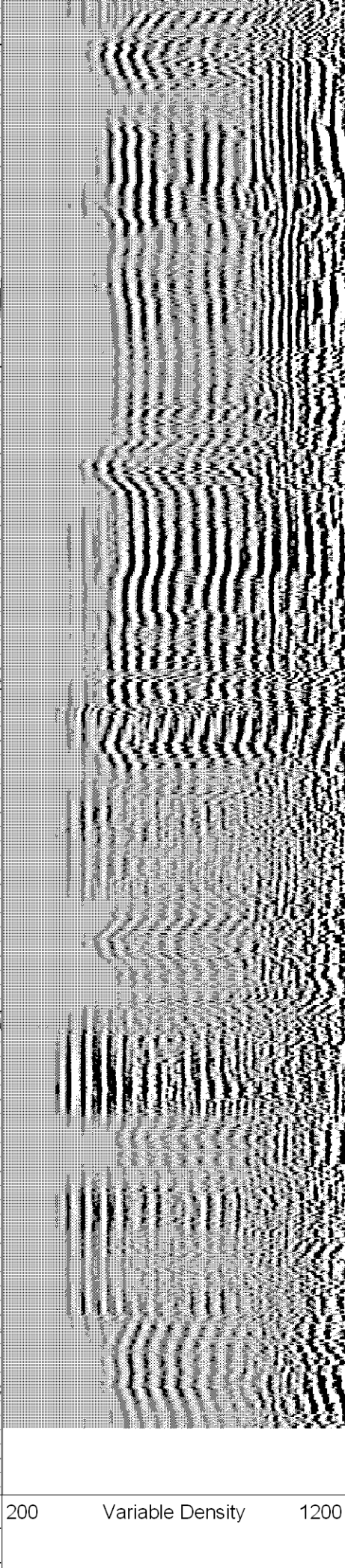
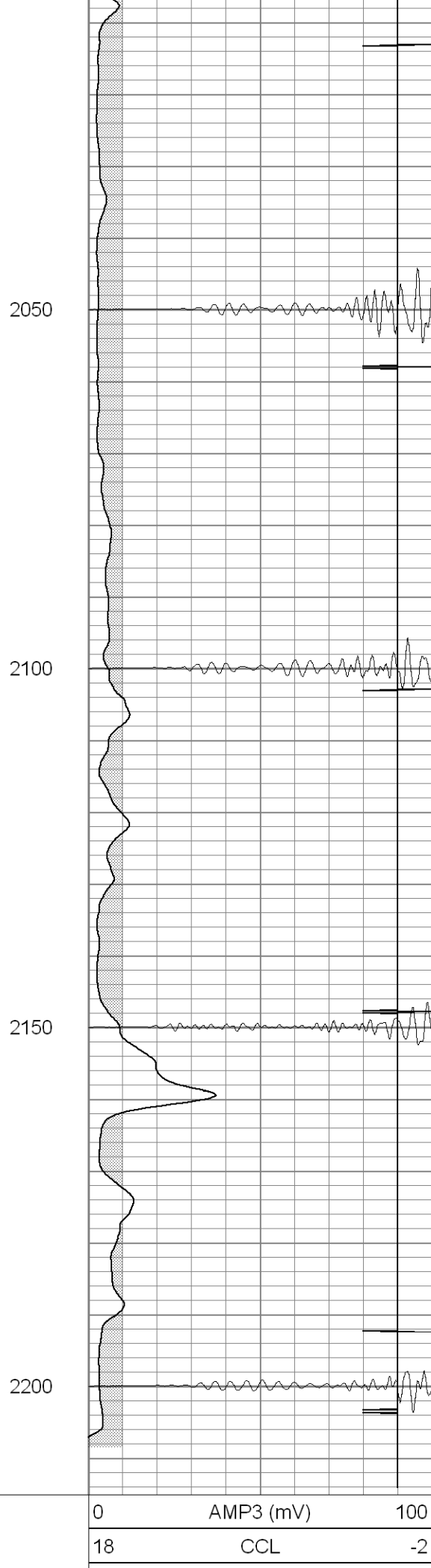
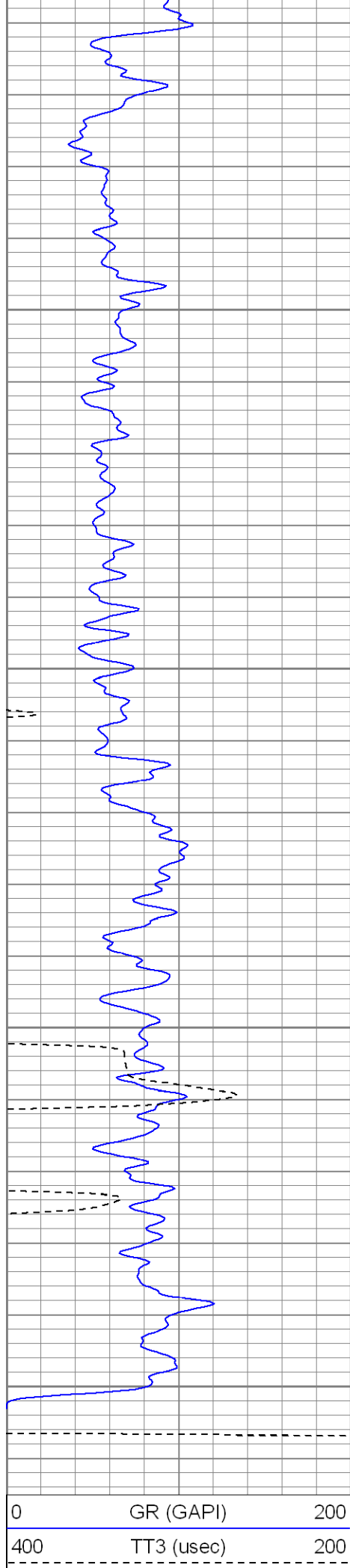
SUPERIOR

Black Lick, Pa.
Mercer, Pa.
Wooster, Oh.
Cleveland, Ok.
Trinidad, Co.

Repeat Section

Database File: xtohr2514-090607b.db
Dataset Pathname: pass2
Presentation Format: cblrt
Dataset Creation: Thu Sep 06 12:49:02 2007 by Log Open-Cased 061129
Charted by: Depth in Feet scaled 1:240





Calibration Report

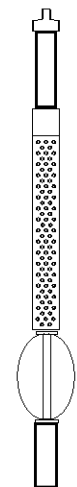
Database File: xtohr2514-090607b.db
 Dataset Pathname: pass5
 Dataset Creation: Tue Sep 04 15:44:23 2007 by Log Open-Cased 061129

Cement Bond Log Calibration Report

Serial Number:	Titan5		
Tool Model:	T5		
Performed:	Thu Sep 06 10:34:40 2007		
Depth:	0	ft	
Casing Diameter:	0	in	
	3' Spacing	5' Spacing	
Signal Zero:	0	0	mV
Calibrated Amplitude:	85	85	mV
Reading at Signal Zero:	0.01	0.01	V
Reading in Free Pipe:	1.1	1.25	V
Gain:	77.9817	68.5484	
Offset:	-0.779817	-0.685484	

Gamma Ray Calibration Report

Serial Number:	Titan5	
Tool Model:	T5	
Performed:	Tue Sep 04 15:44:27 2007	
Calibrator Value:	1.0	GAPI
Background Reading:	0.0	cps
Calibrator Reading:	1.0	cps
Sensitivity:	1.0000	GAPI/cps

Sensor	Offset (ft)	Schematic	Description	Len (ft)	OD (in)	Wt (lb)	
GR	13.64		None	0.75	1.50	5.00	
			GR-T5 (Titan5)	2.52	2.44	25.00	
WVF5	9.49		CBL-T5 (Titan5)	7.23	2.25	110.00	
WVF3	8.49						
CCL	0.83		X	3.00	1.69	25.00	
			CCL-T5 (Titan5)	2.15	2.75	15.00	
			Long				

Dataset: xtohr2514-090607b.db: field/well/run1/pass3
 Total Length: 15.66 ft
 Total Weight: 180.00 lb
 O.D.: 2.75 in