

Company										Company									
Well										Well									
Field										Field									
County										County									
State										State									
Location										Location									
1321' FNL & 1402' FEL										1321' FNL & 1402' FEL									
NN/NE										NN/NE									
Sec- 7, Twp-3N, Rge- 65W										Sec- 7, Twp-3N, Rge- 65W									
GL										GL									
KB										KB									
Elevation										Elevation									
4998										4998									
Elevation										Elevation									
K.B. 501.4										K.B. 501.4									
D.F. 501.3										D.F. 501.3									
G.L. 4998										G.L. 4998									
Date										Date									
February 2, 2005										February 2, 2005									
Run Number										Run Number									
5006										5006									
Depth Differ										Depth Differ									
7997										7997									
Bottom Logged Interval										Bottom Logged Interval									
3000										3000									
Top Log Interval										Top Log Interval									
3000										3000									
Casing Differ										Casing Differ									
683										683									
Casing Logger										Casing Logger									
N/A Logged										N/A Logged									
BH Size										BH Size									
7.75"										7.75"									
Polymer Gel										Polymer Gel									
6.3 / 65										6.3 / 65									
Type Fluid in Hole										Type Fluid in Hole									
Density / Viscosity										Density / Viscosity									
pH / Fluid Loss										pH / Fluid Loss									
9.0 / 8.4										9.0 / 8.4									
Source of Sample										Source of Sample									
Mud pit										Mud pit									
Rmt @ Mass Temp										Rmt @ Mass Temp									
3.72 @ 69°F										3.72 @ 69°F									
Rmt @ Mass Temp										Rmt @ Mass Temp									
2.83 @ 69°F										2.83 @ 69°F									
Source of Rmt / Rmt										Source of Rmt / Rmt									
4.51 @ 69°F										4.51 @ 69°F									
Measure / Calc										Measure / Calc									
1.10@ 217 °F										1.10@ 217 °F									
Rmt @ BHT										Rmt @ BHT									
1000										1000									
Time Circulation Stopped										Time Circulation Stopped									
11:00										11:00									
Time Logger on Bottom										Time Logger on Bottom									
202 degF										202 degF									
Maximum Recorded Temperature										Maximum Recorded Temperature									
Equipment Number										Equipment Number									
4078										4078									
Location										Location									
Bighorn, CO										Bighorn, CO									
Recorded By										Recorded By									
Jim Harris										Jim Harris									
Witnessed By										Witnessed By									
Date										Date									
Soustenau										Soustenau									

<<< Fold Here >>>

All interpretations are opinions based on inferences from electrical or other measurements and we cannot and do not guarantee the accuracy or interpretation, and we shall not, except in the case of gross or willful negligence on our part, be liable or responsible for any loss, costs, damages, or sustained by anyone resulting from any interpretation made by any of our officers, agents or employees. These interpretations are also subject to conditions set out in our current Price Schedule.

Comments

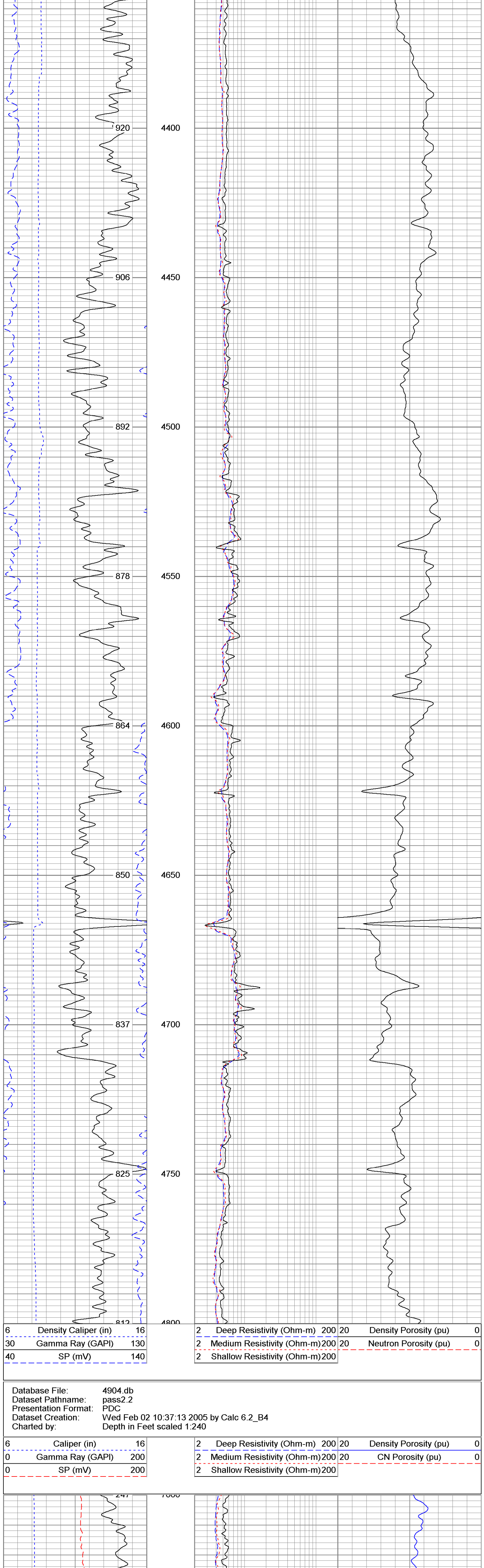
Annular volume calculated for 4.5" casing  
Caza Rig 17  
Thank you for using Phoenix Surveys!!  
API #: 05-123-22645-00  
  
No repeat due to hole conditions

Comments

Annular volume calculated for 4.5" casing  
Caza Rig 17  
Thank you for using Phoenix Surveys!!  
API #: 05-123-22645-00

No repeat due to hole conditions

Database File: 4904.db	Density Porosity (pu)	0
Dataset Pathname: pass2	Neutron Porosity (pu)	0
Presentation Format: PDC1		
Dataset Creation: Wed Feb 02 10:09:47 2005 by Log 6.2_B4		
Charted by: Depth in Feet scaled 1:240		



Database File: 4904.db	Density Porosity (pu)	0
Dataset Pathname: pass2.2	CN Porosity (pu)	0
Presentation Format: PDC		
Dataset Creation: Wed Feb 02 10:37:13 2005 by Calc 6.2_B4		
Charted by: Depth in Feet scaled 1:240		

