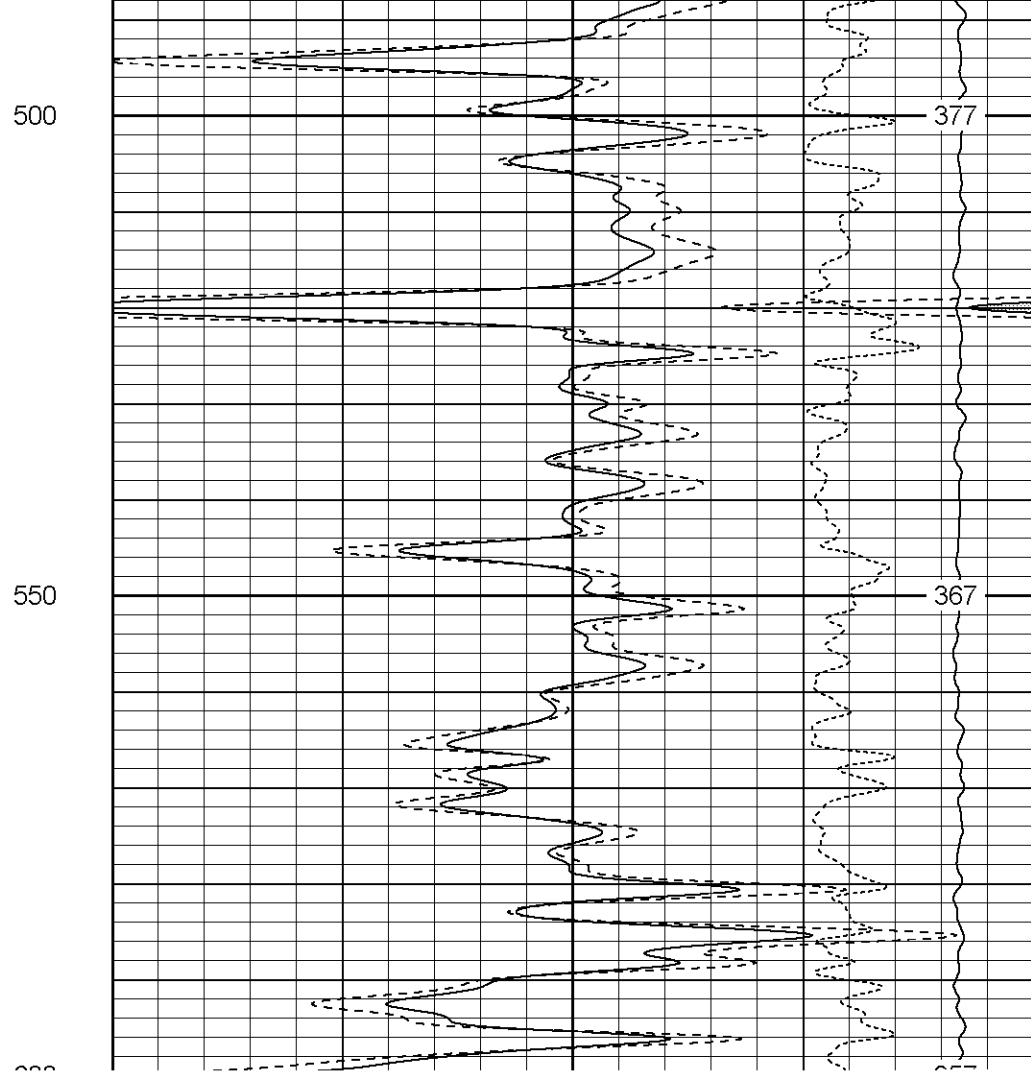
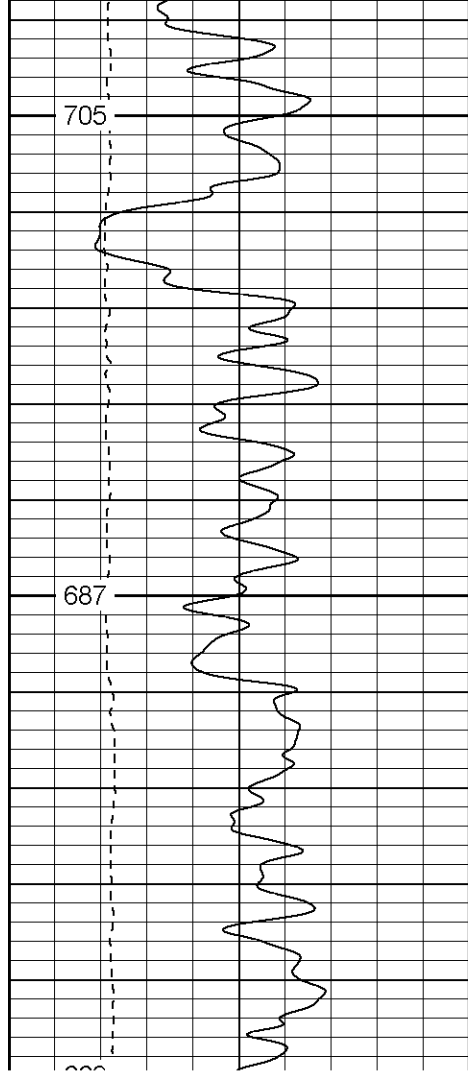
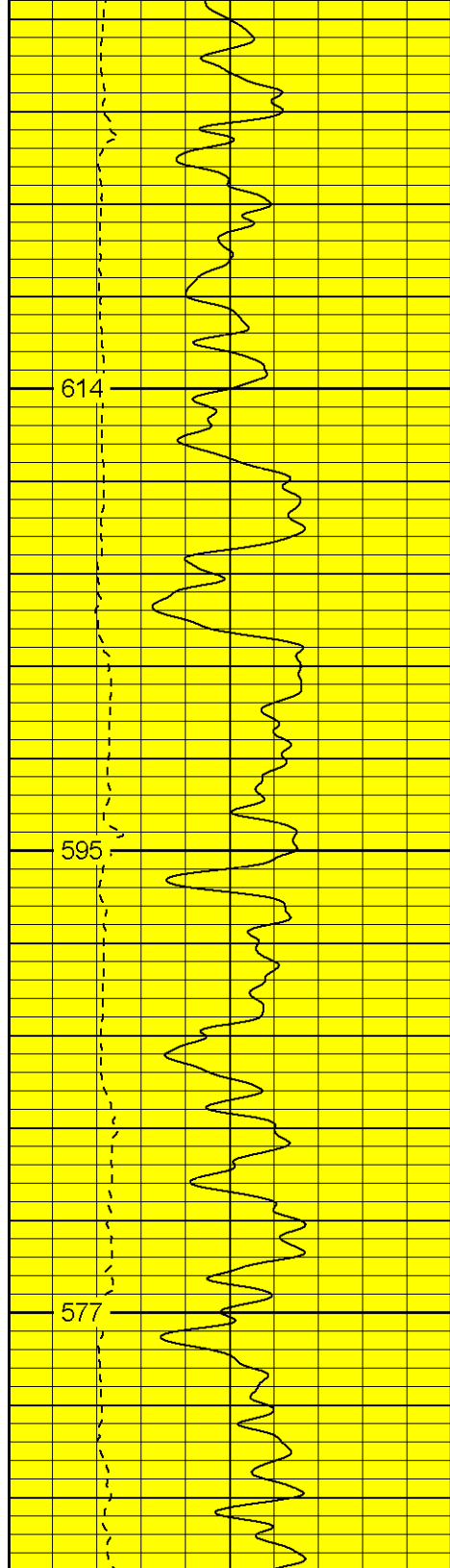


Company	XTO Energy, Inc.
Well	Hill Ranch 35-05
Field	Purgatoire River
County	Las Animas

Date	
Run Number	
Depth Driller	
Depth Logger	
Bottom Logged	
Top Log Interva	
Casing Driller	
Casing Logger	
Bit Size	
Type Fluid in Hc	
Density / Viscosi	
pH / Fluid Loss	
Source of Samp	
Rm @ Meas. Tc	
Rmf @ Meas. Tc	
Rmc @ Meas. T	
Source of Rmf /	
Rm @ BHT	
Time Circulation	
Time Logger on	
Maximum Recor	
Equipment Num	
Location	
Recorded By	
Witnessed By	

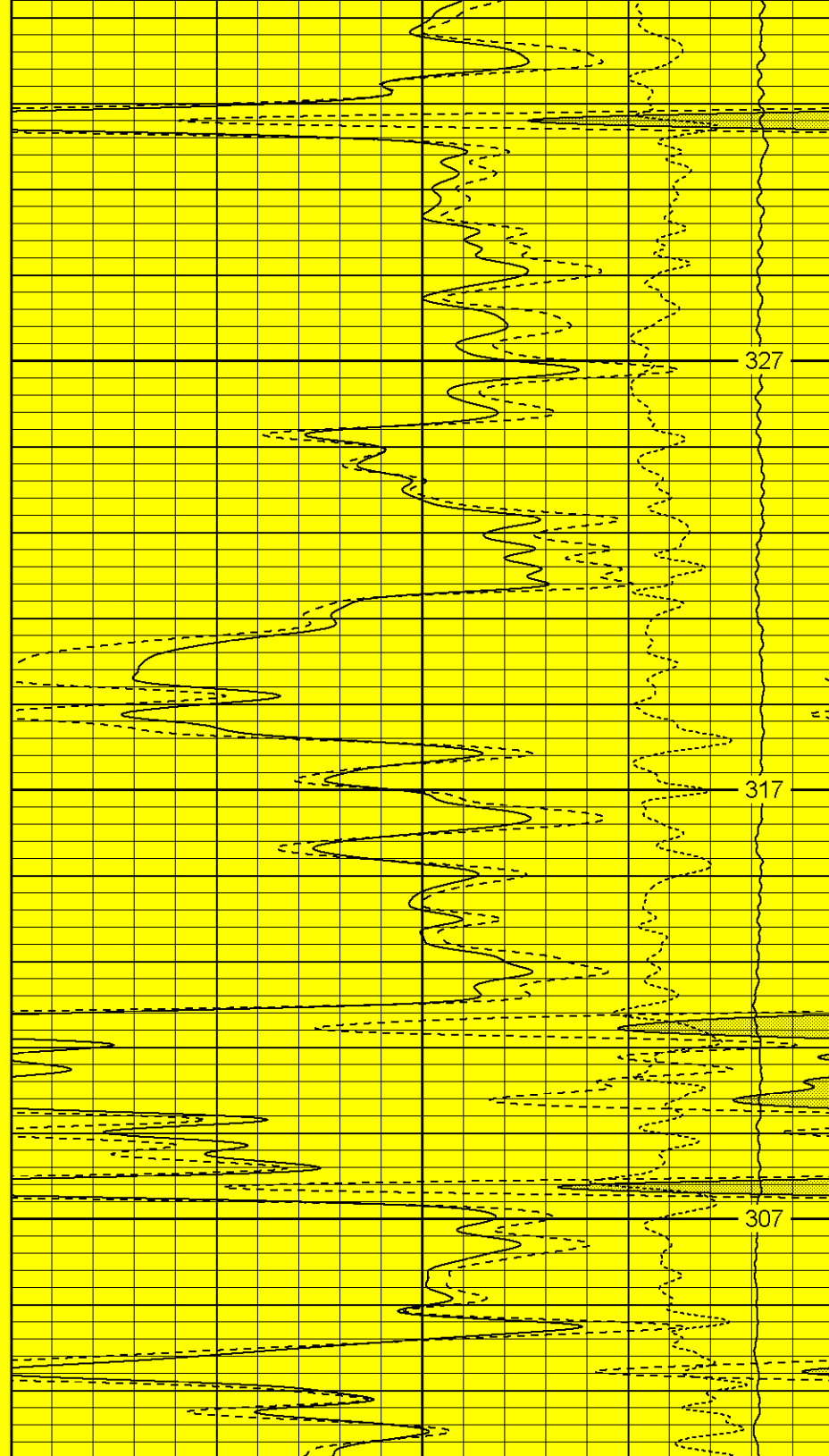


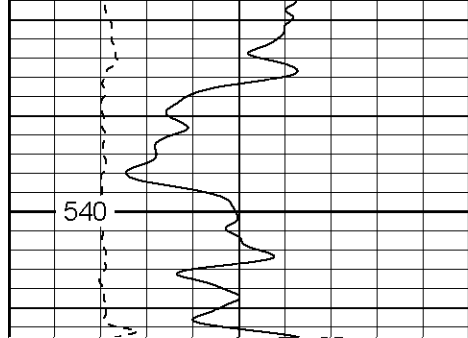


750

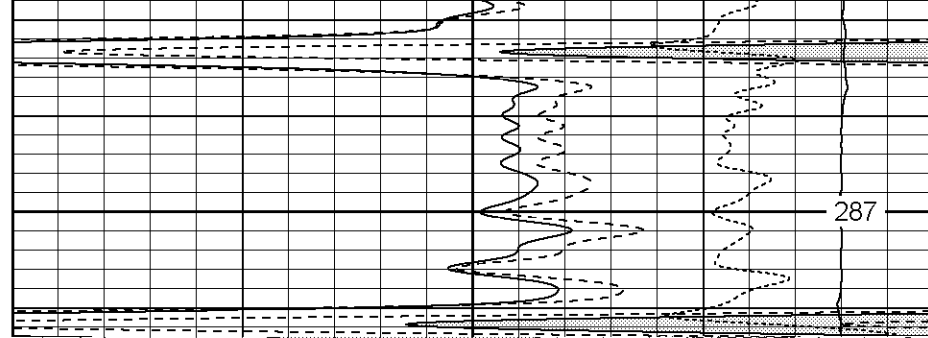
800

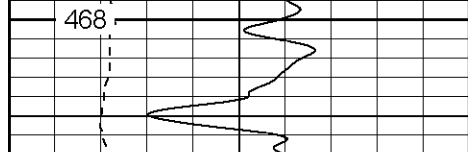
850



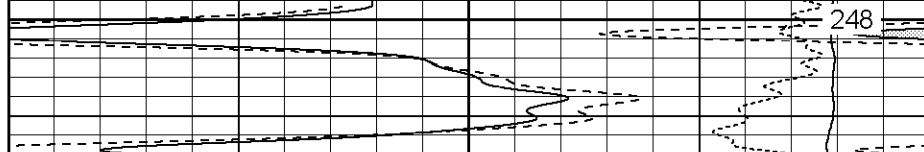


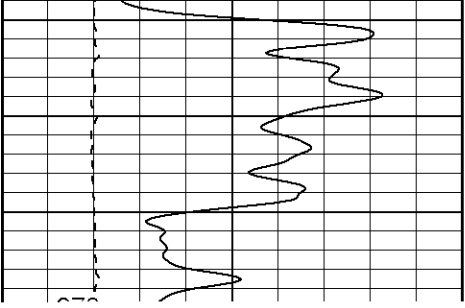
950



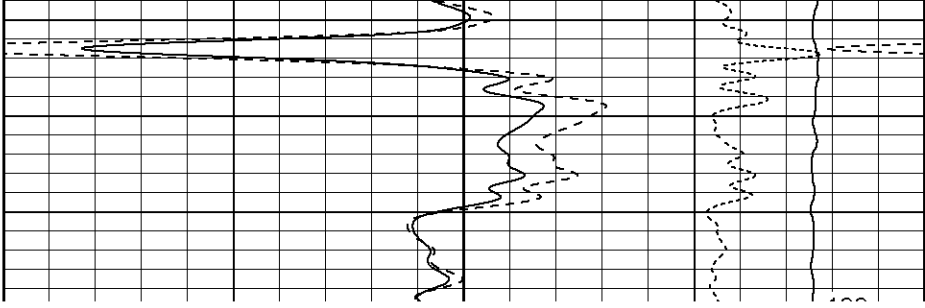


1150

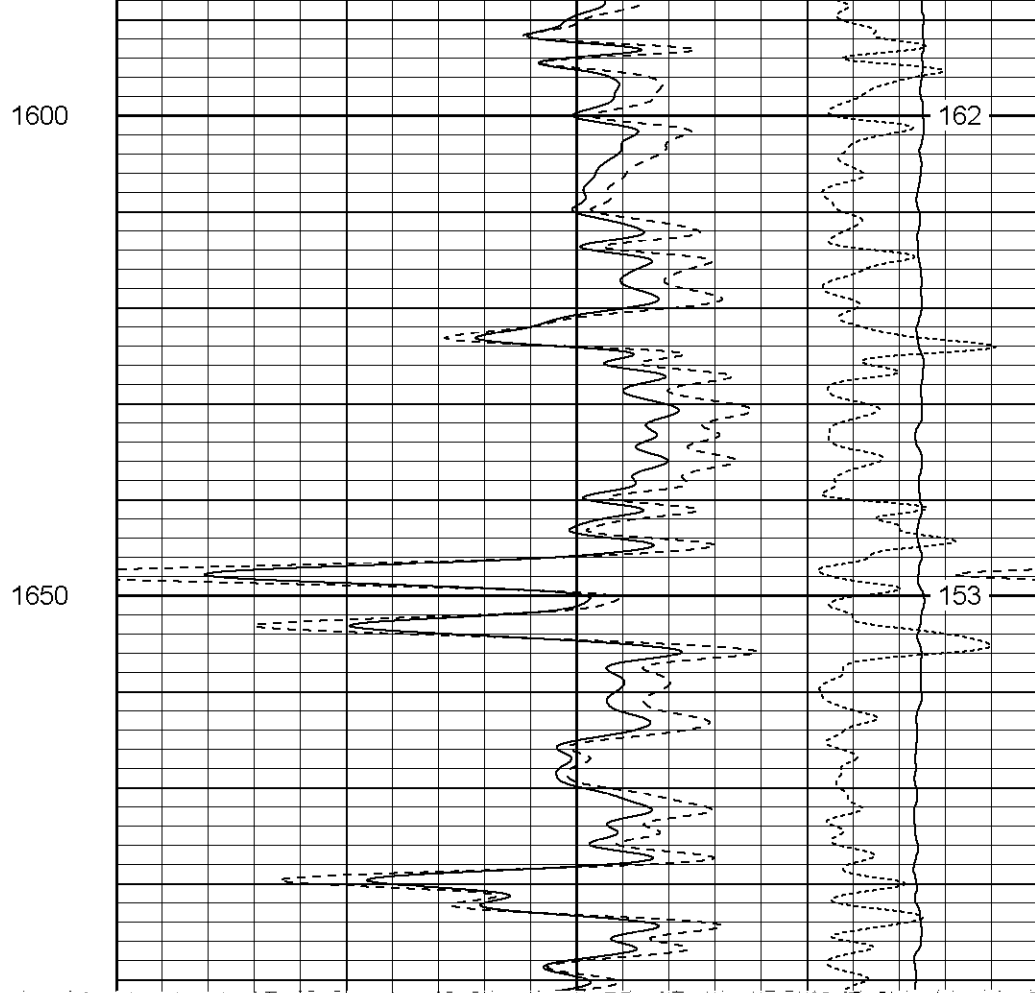
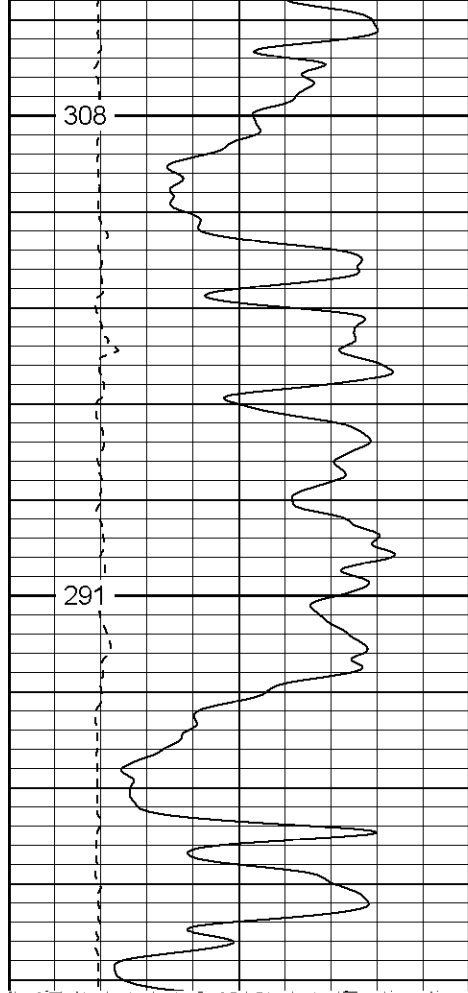


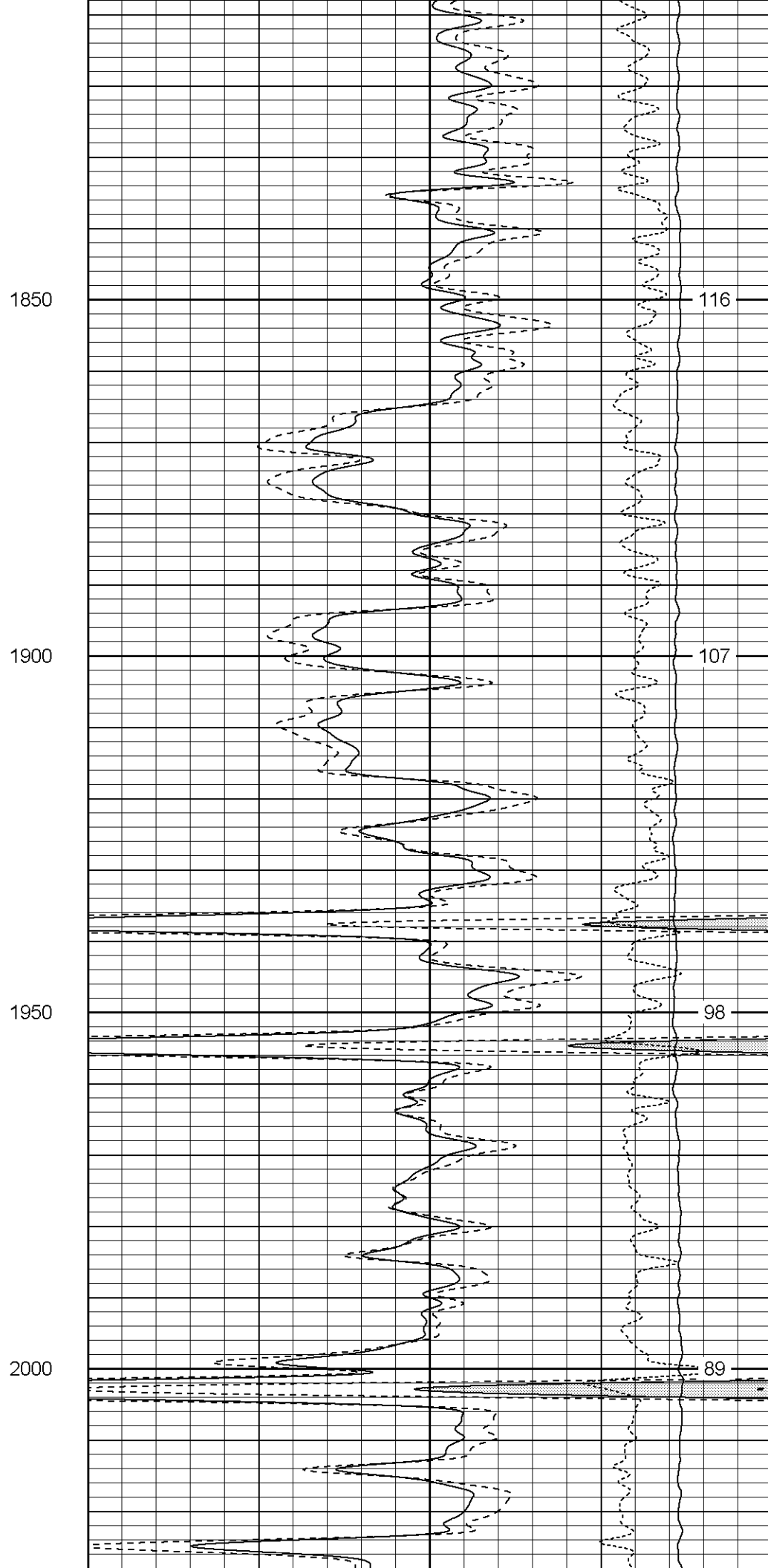
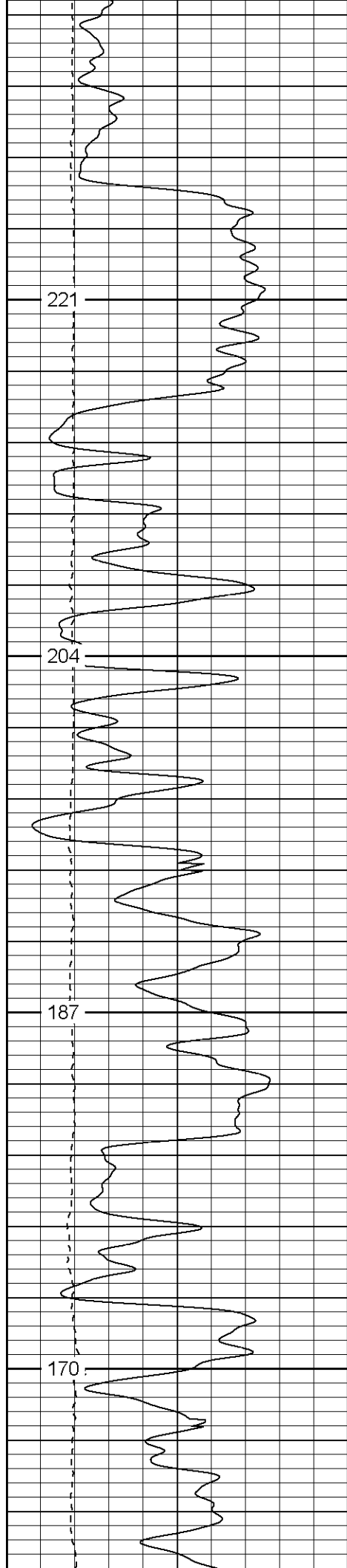


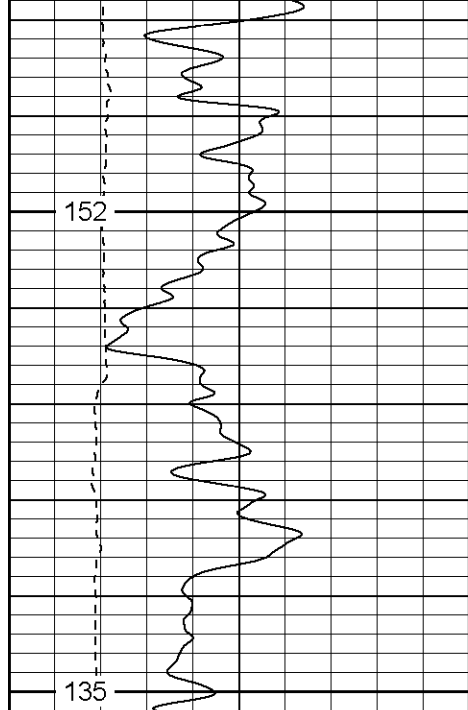
4.33



4.33

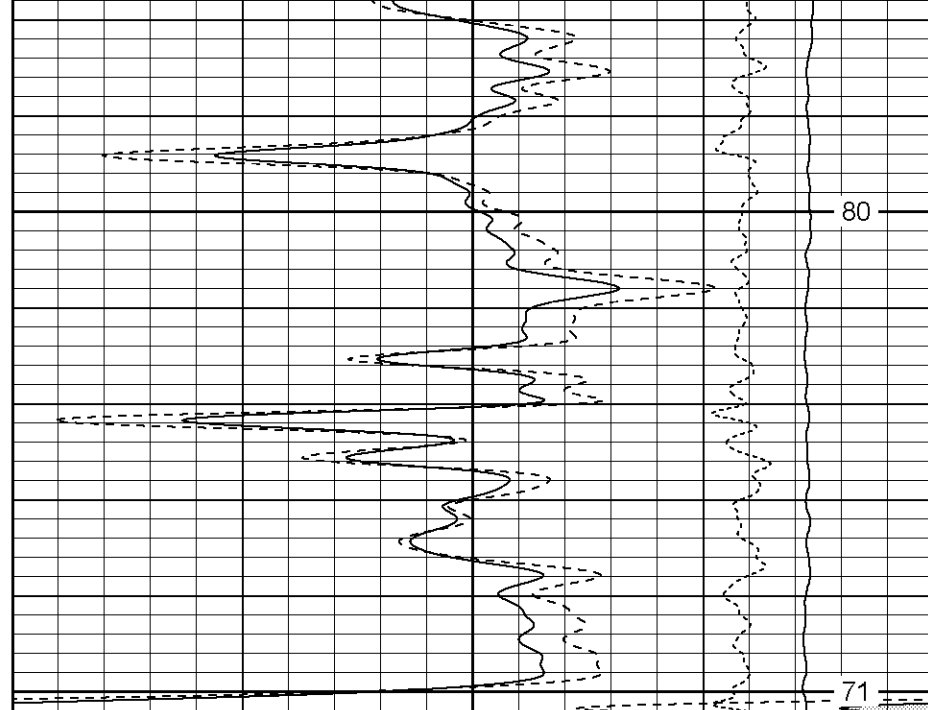


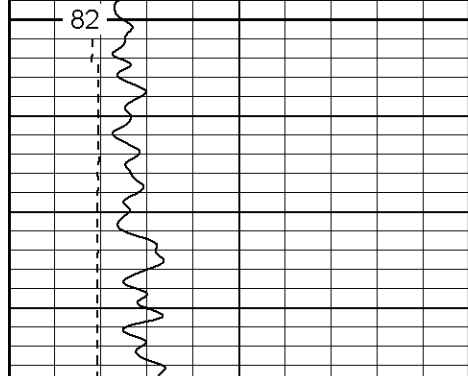




2050

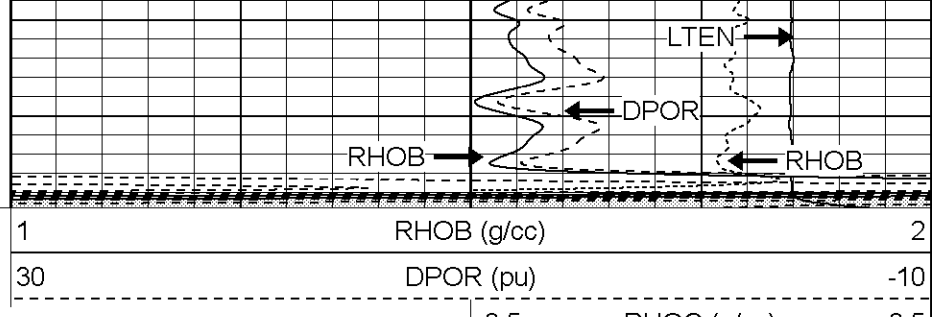
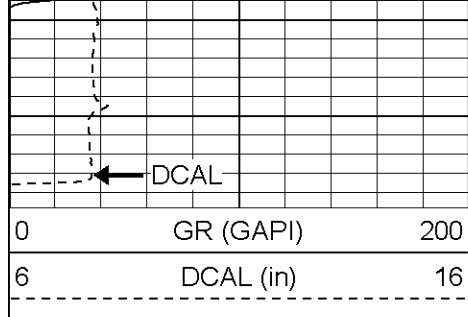
2100

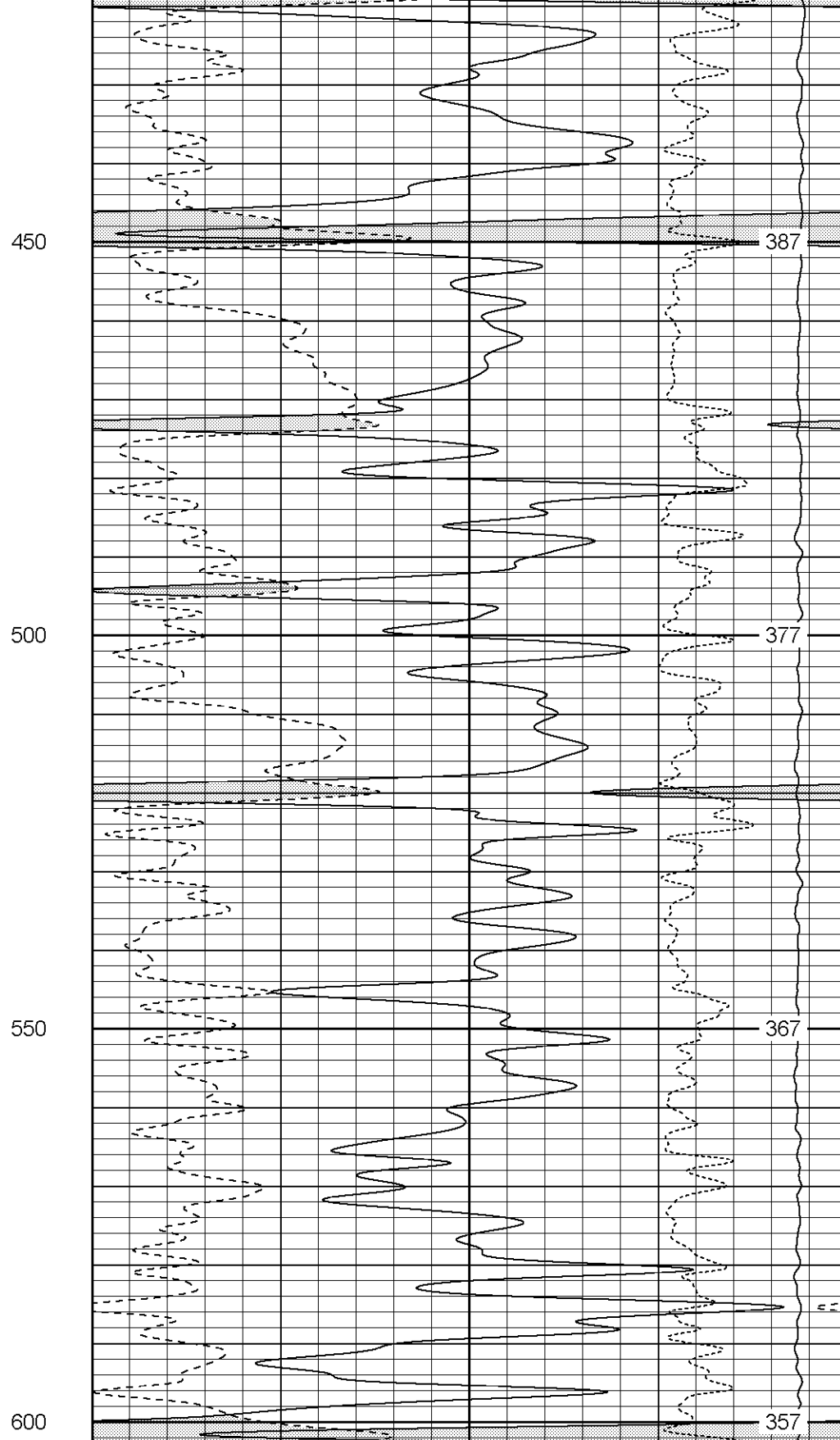
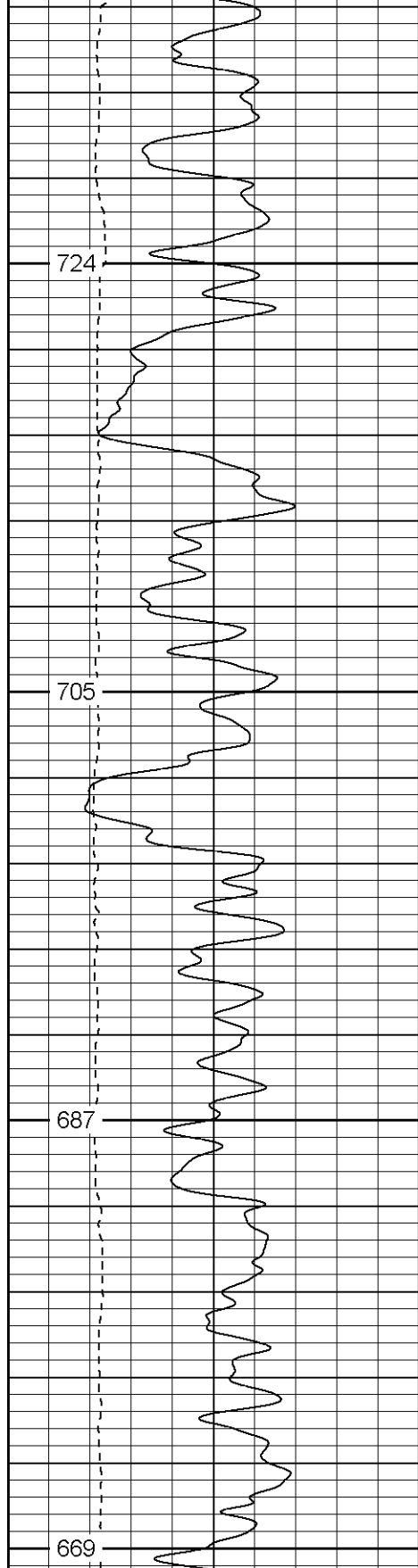


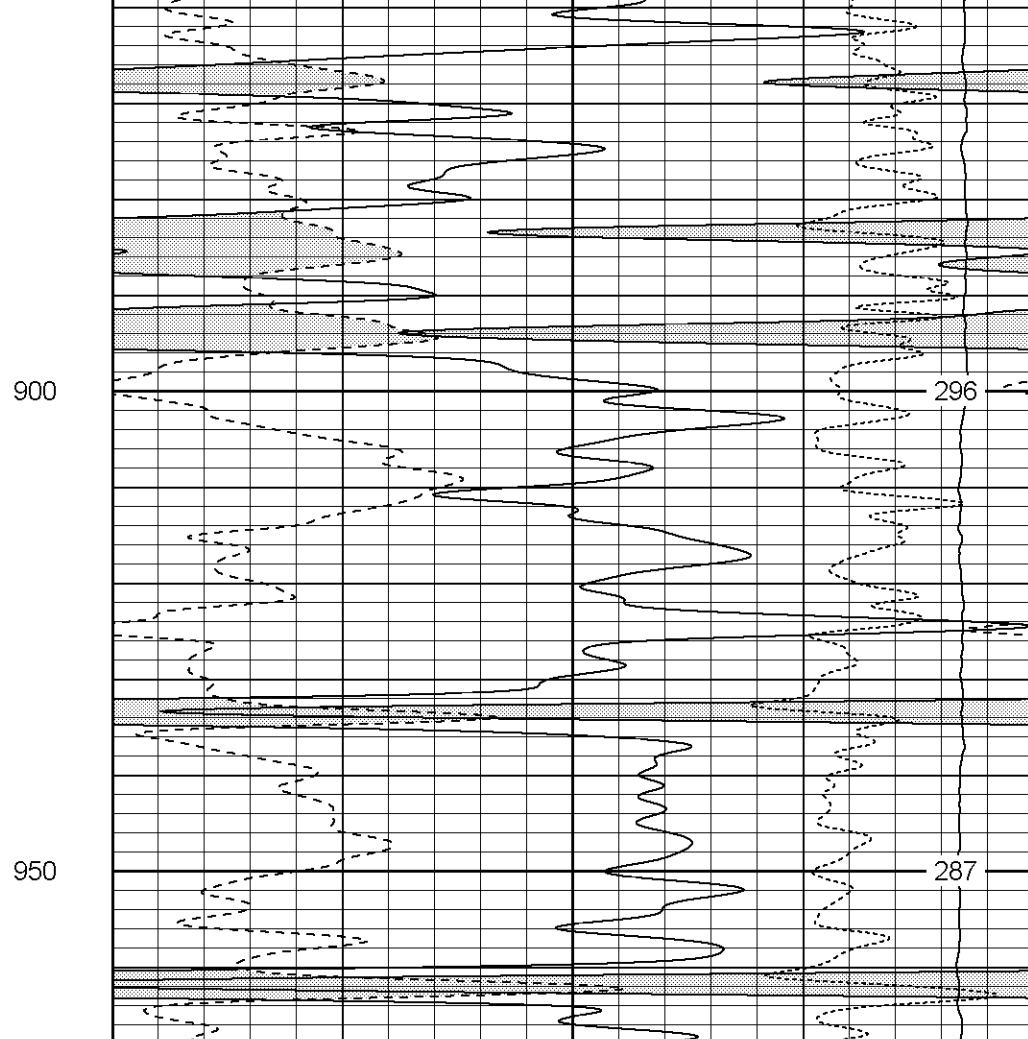
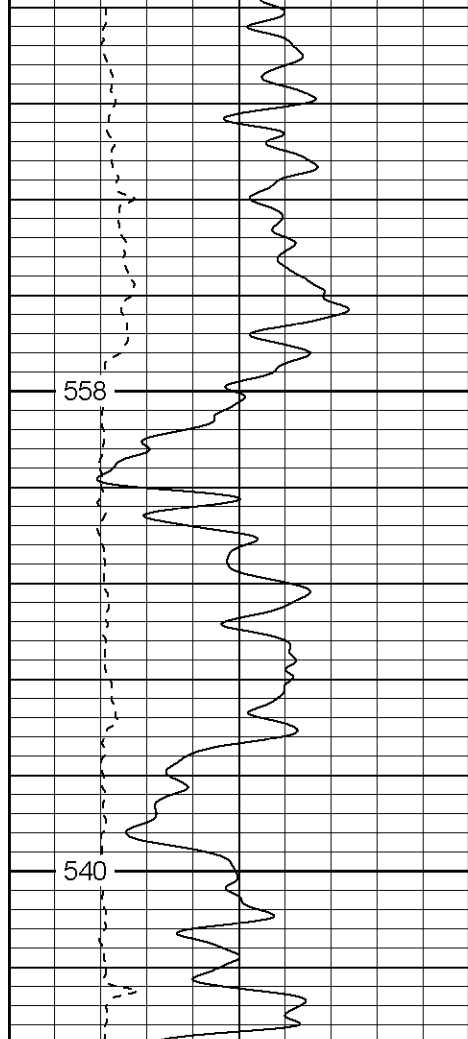


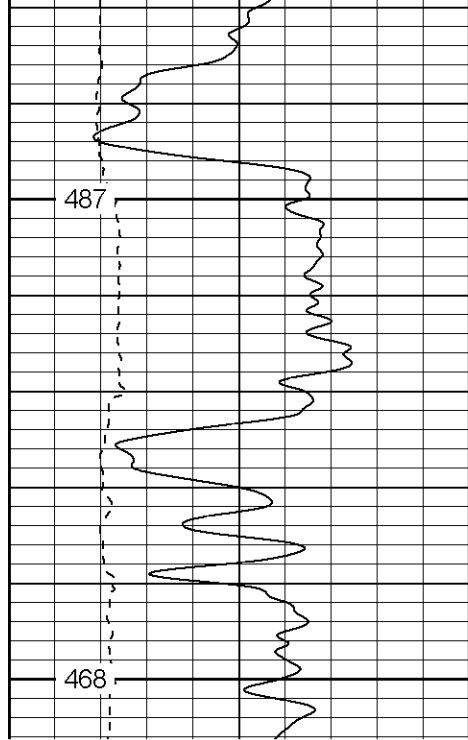
2250





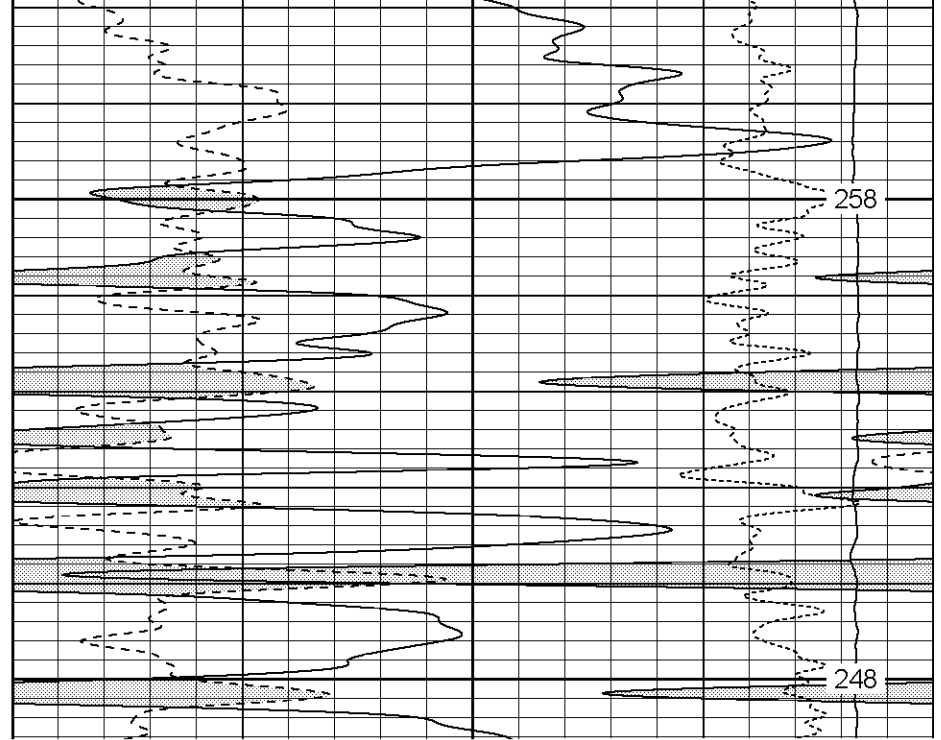


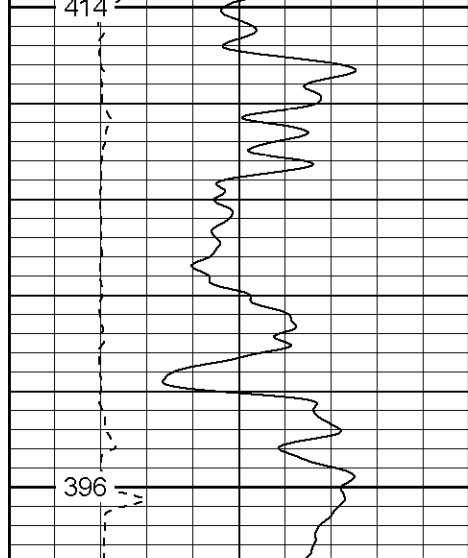




1100

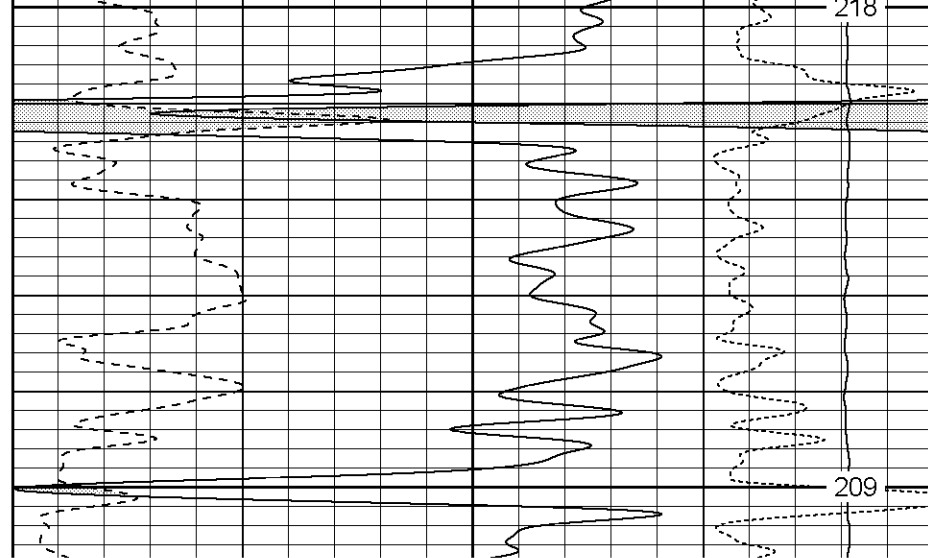
1150

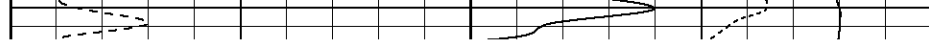
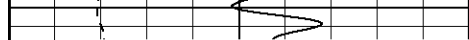


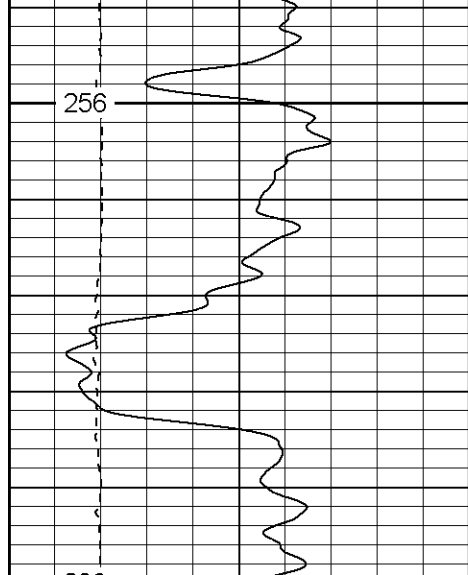


1300

1350

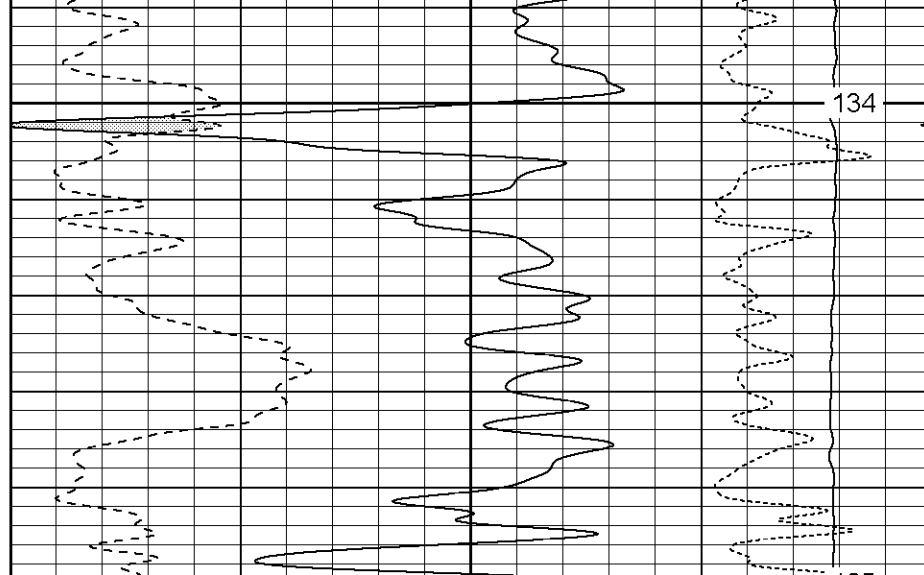


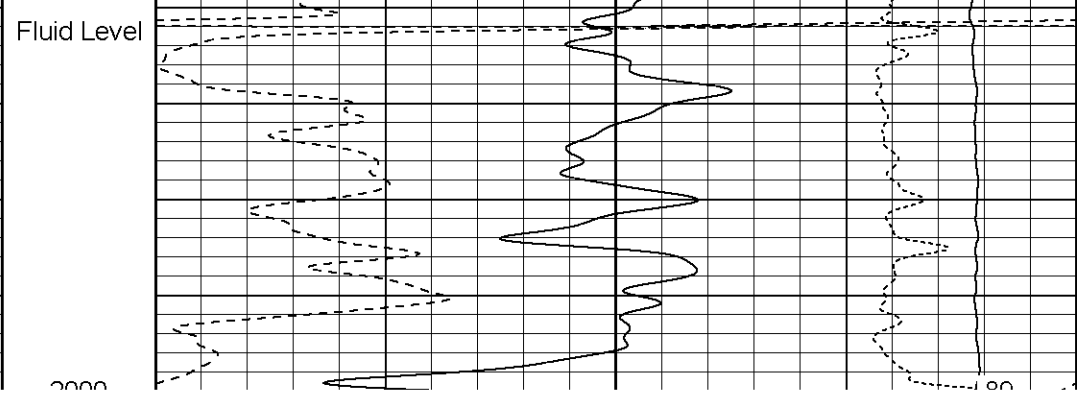
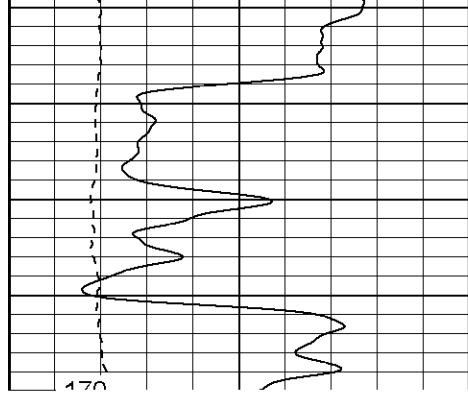


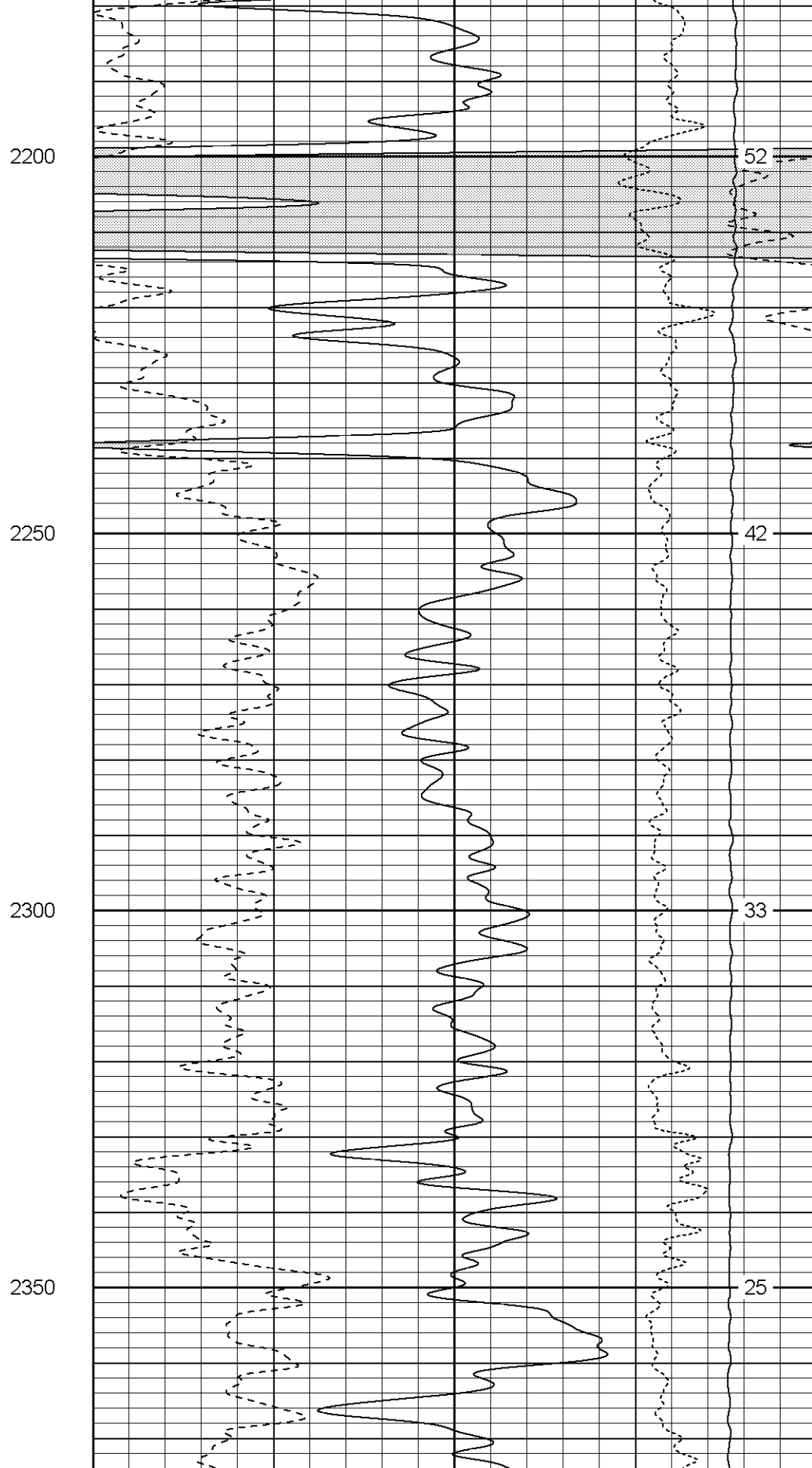
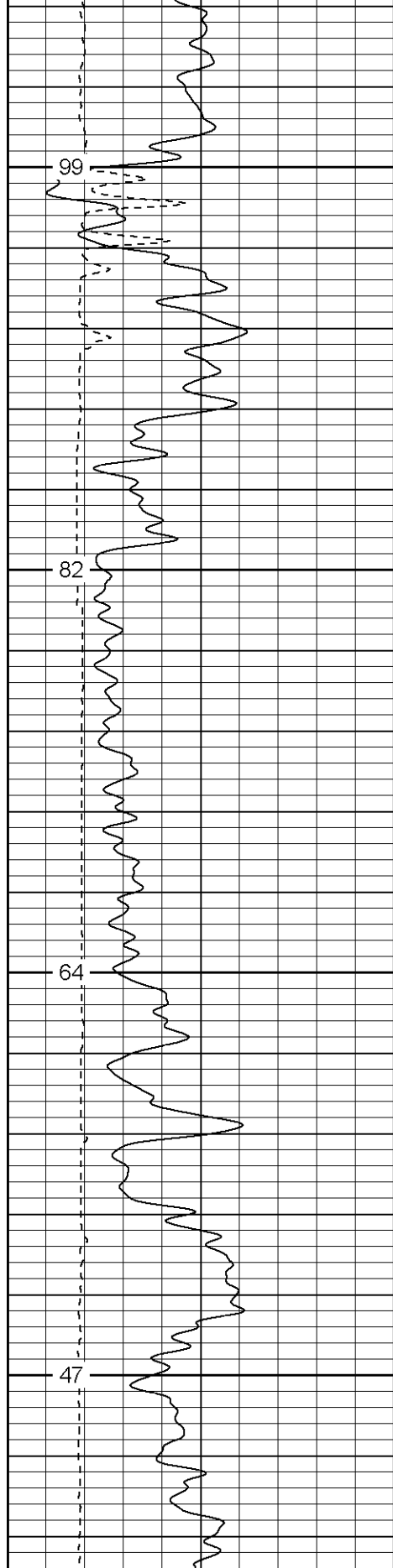


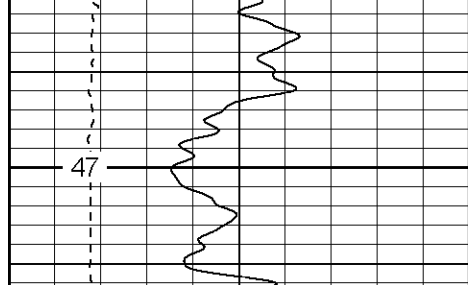
1750

133

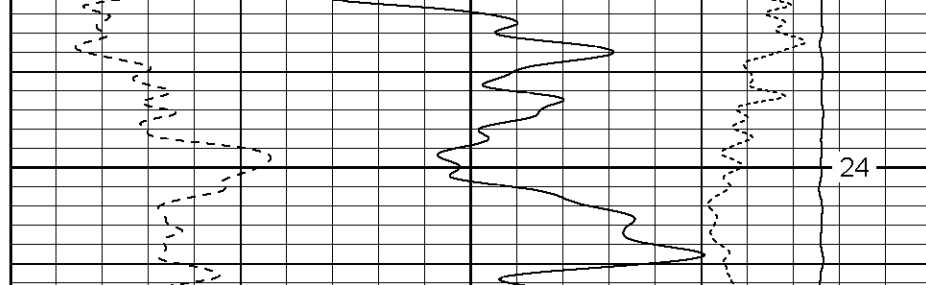


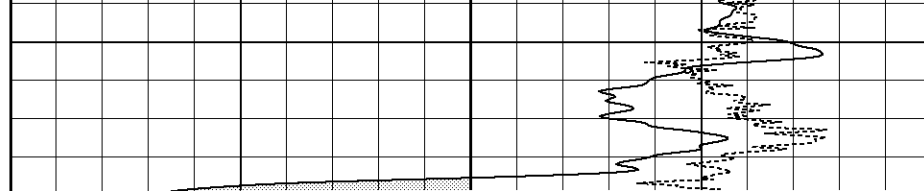
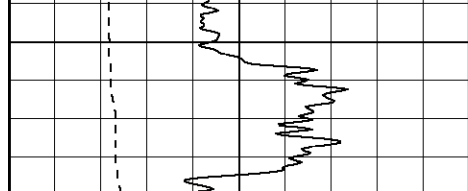


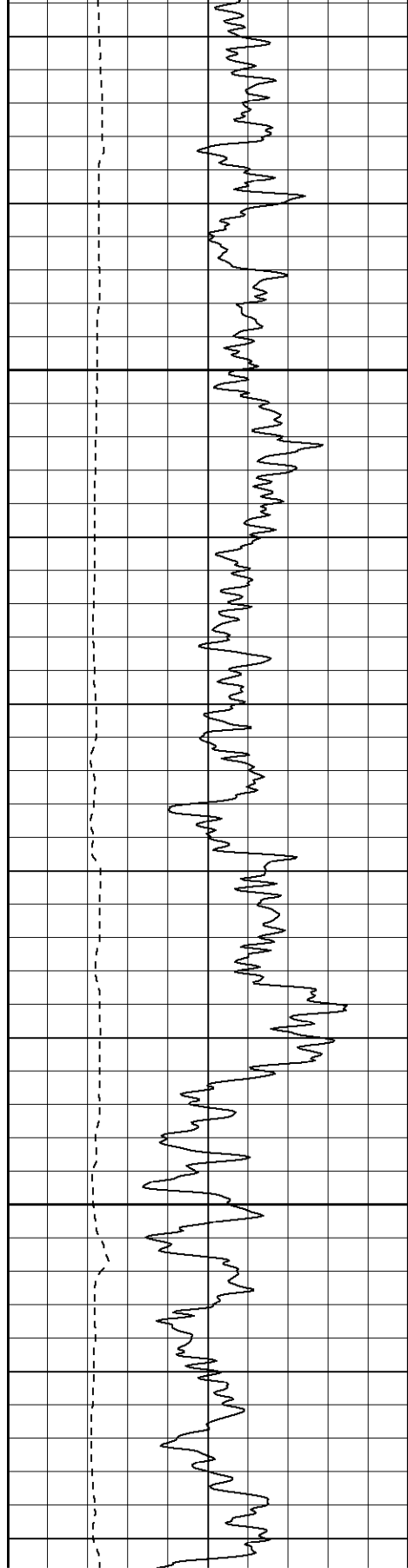




2350

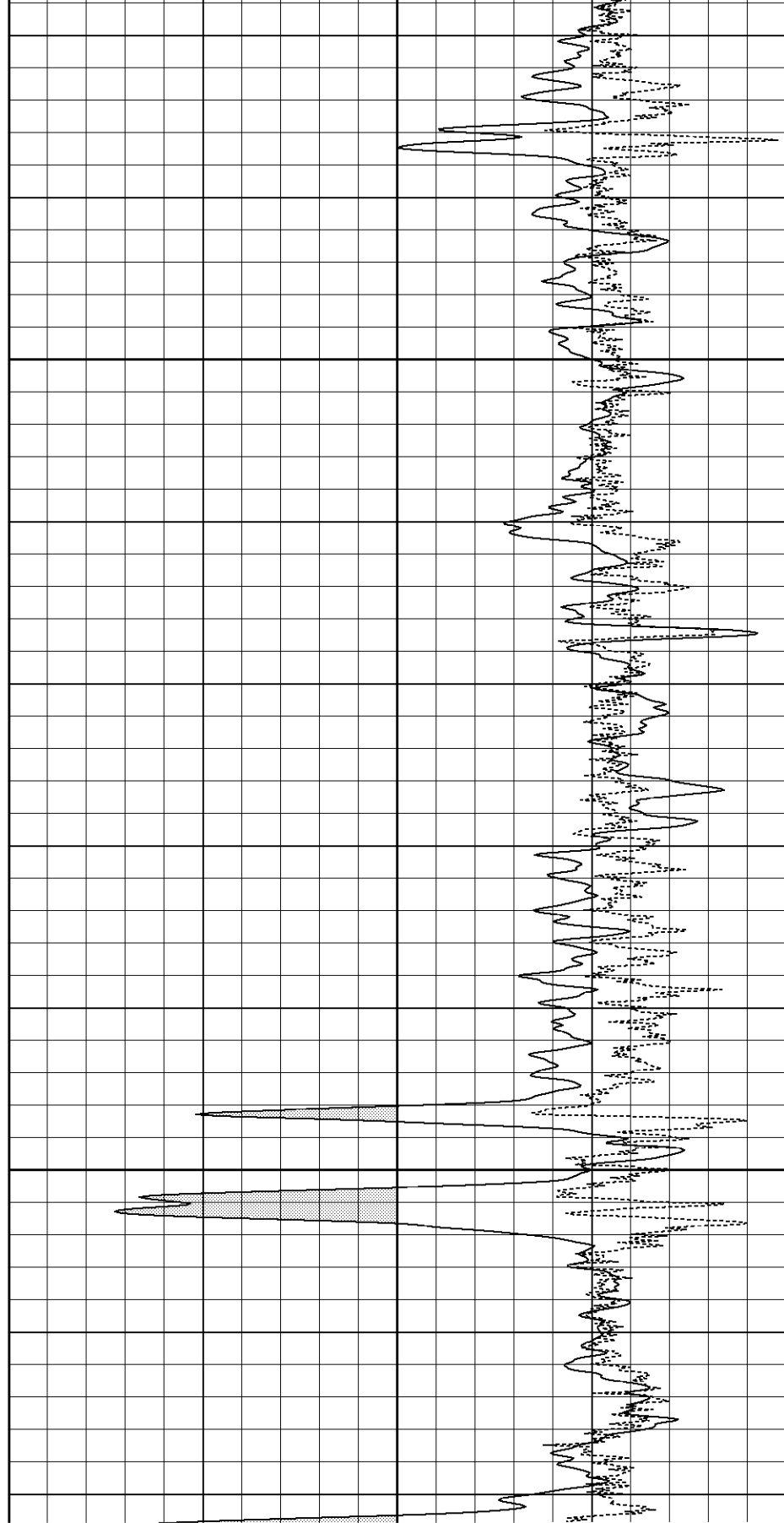


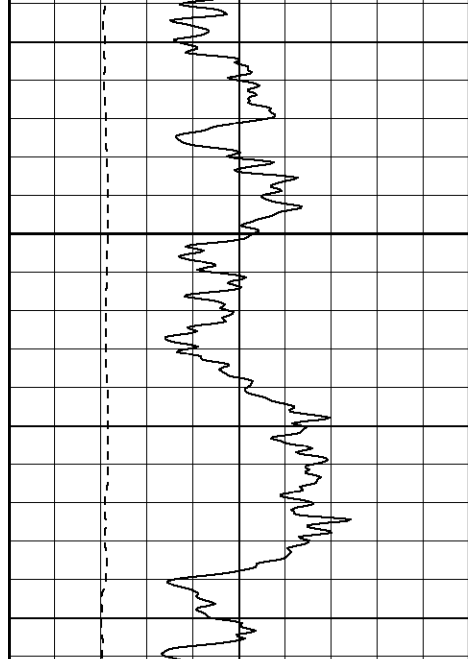




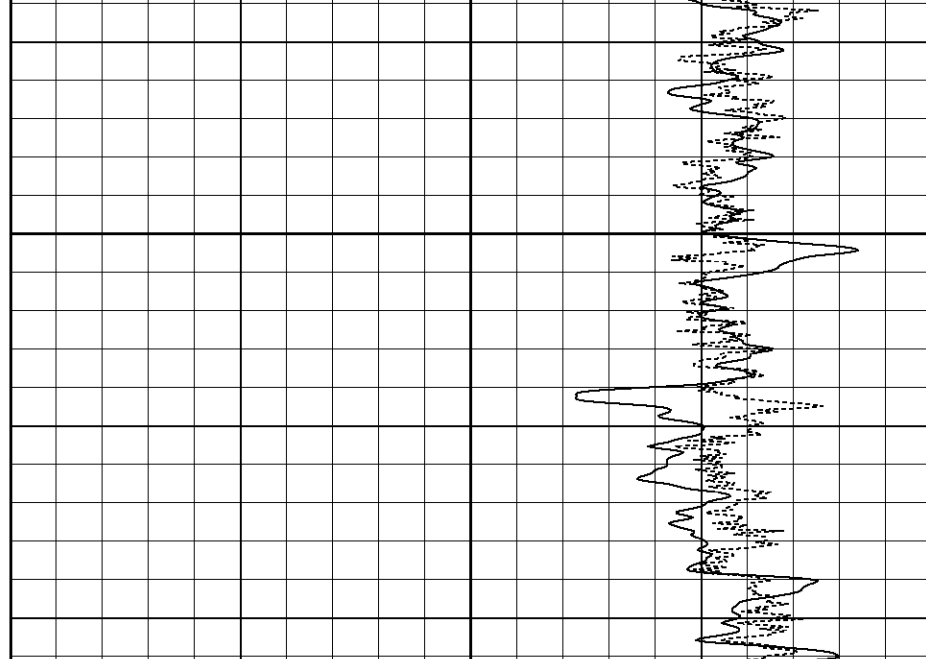
650

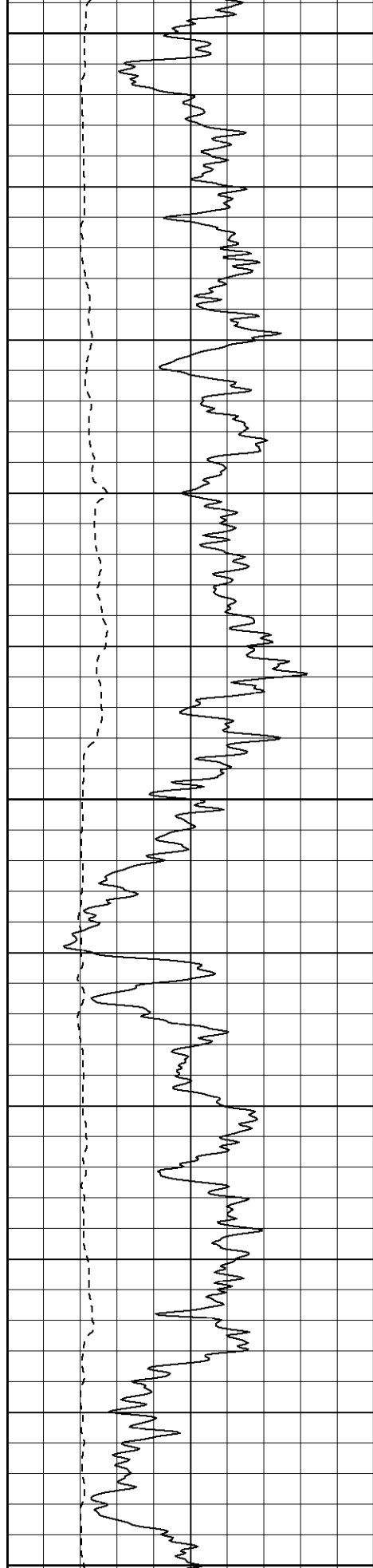
700





750

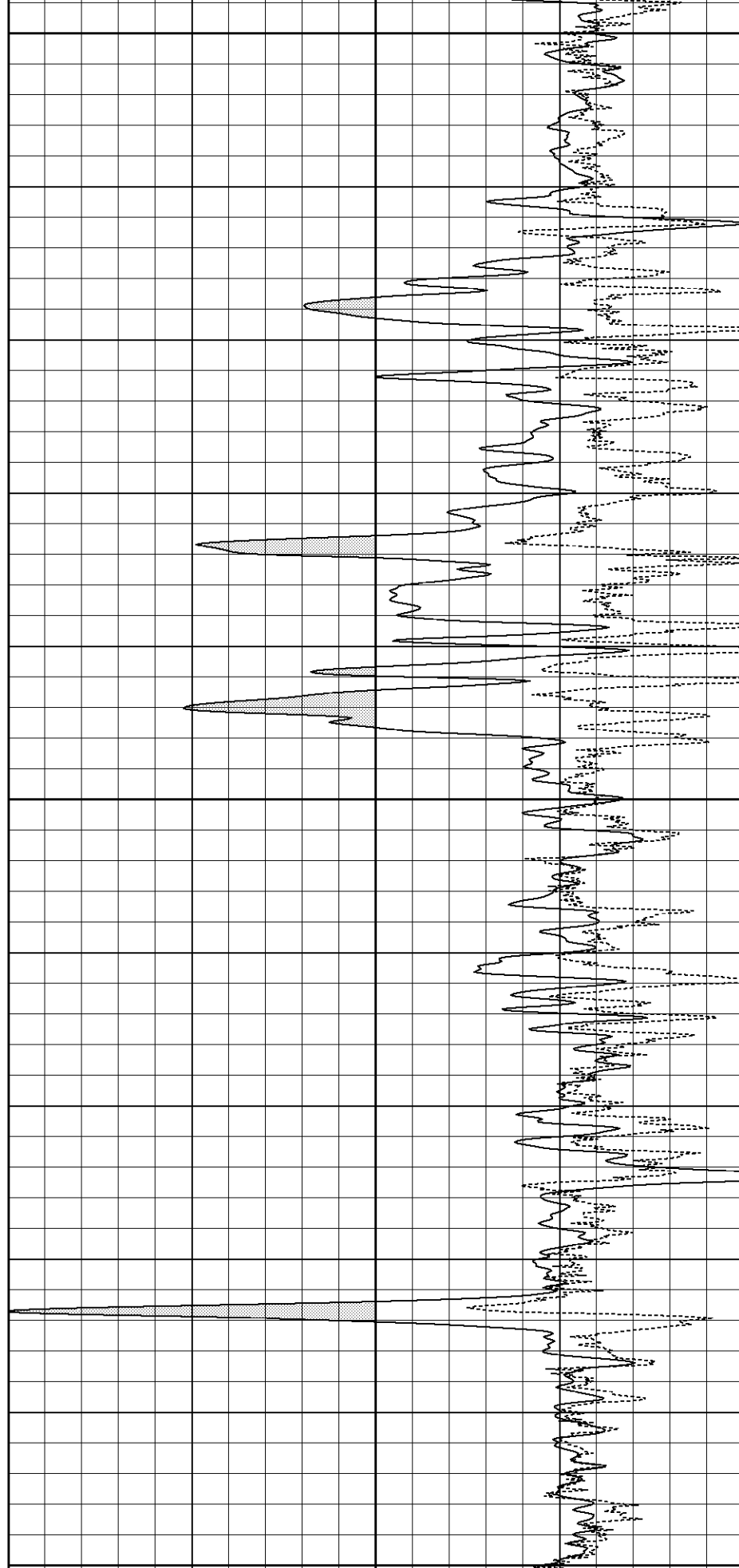


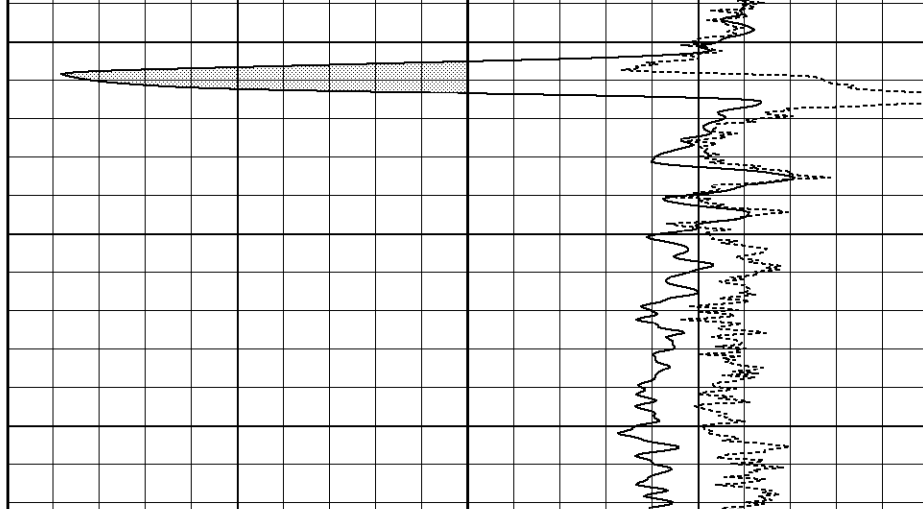
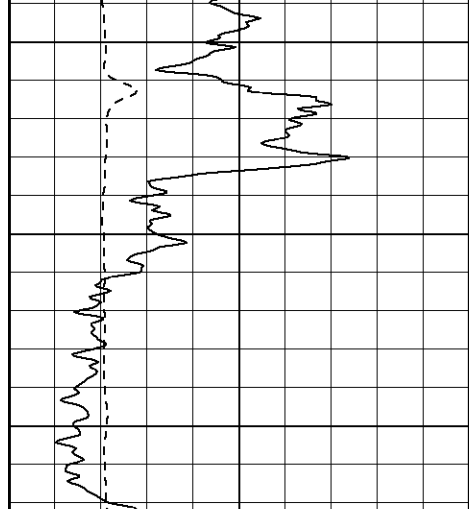


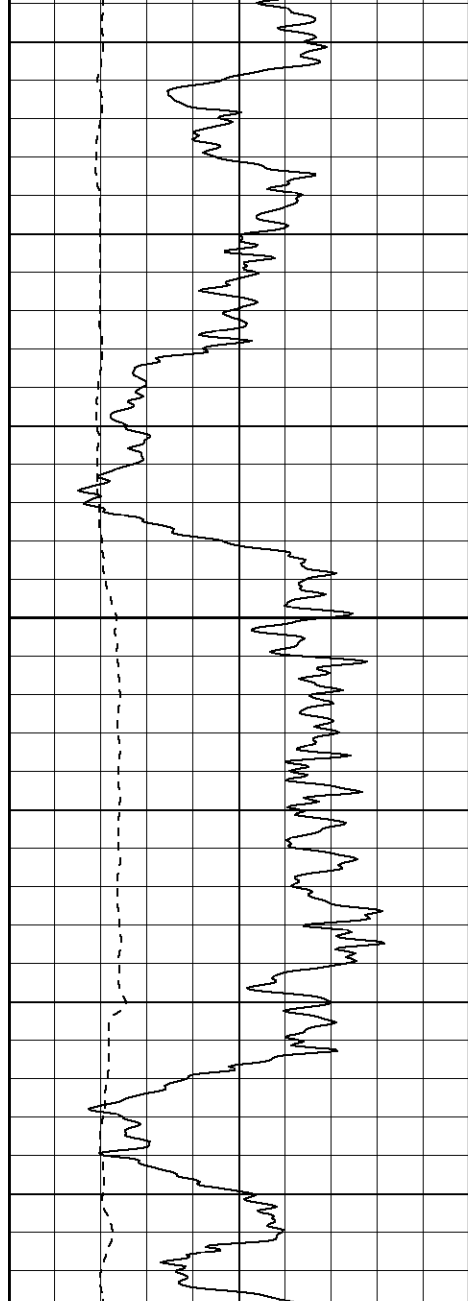
850

900

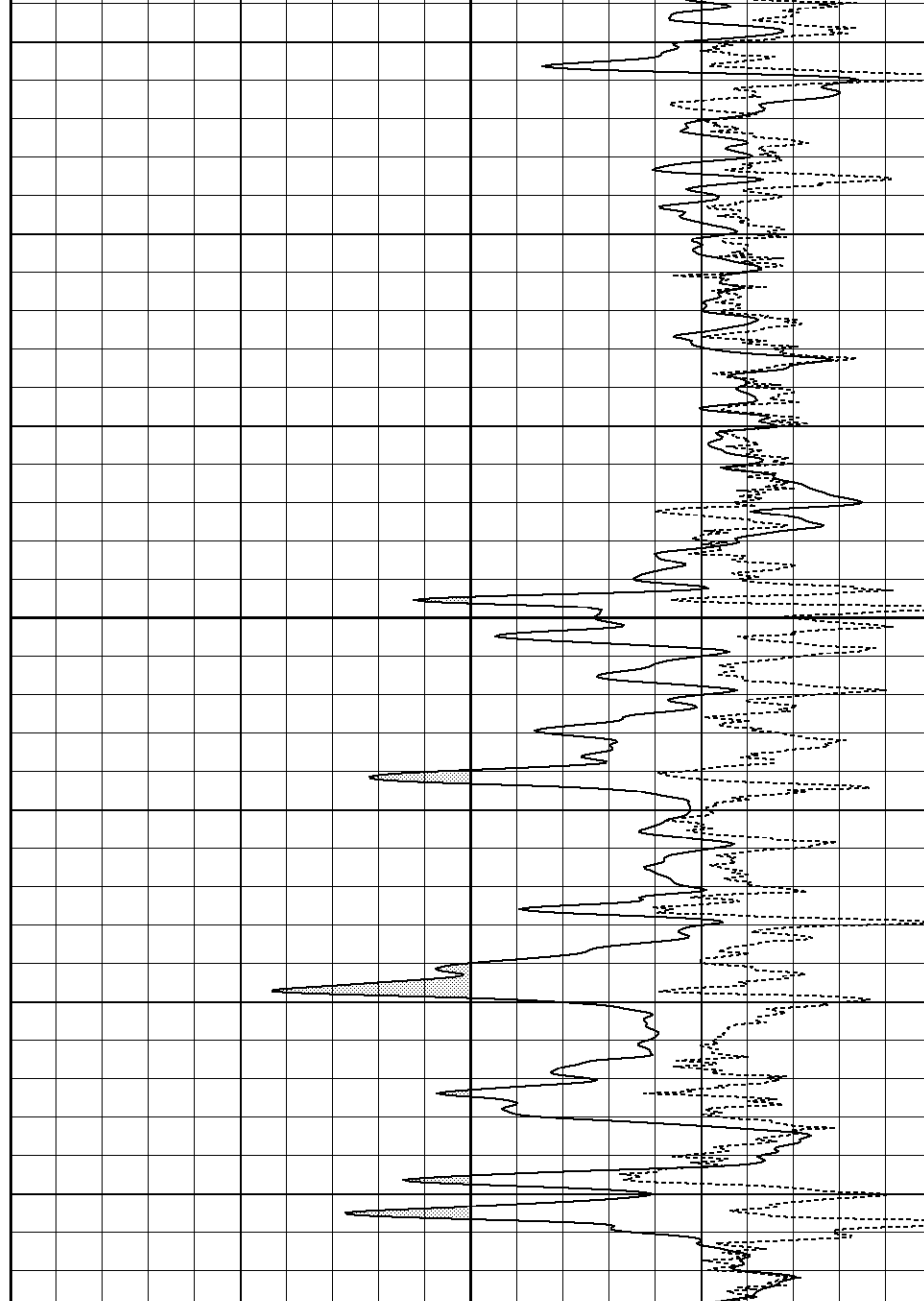
950

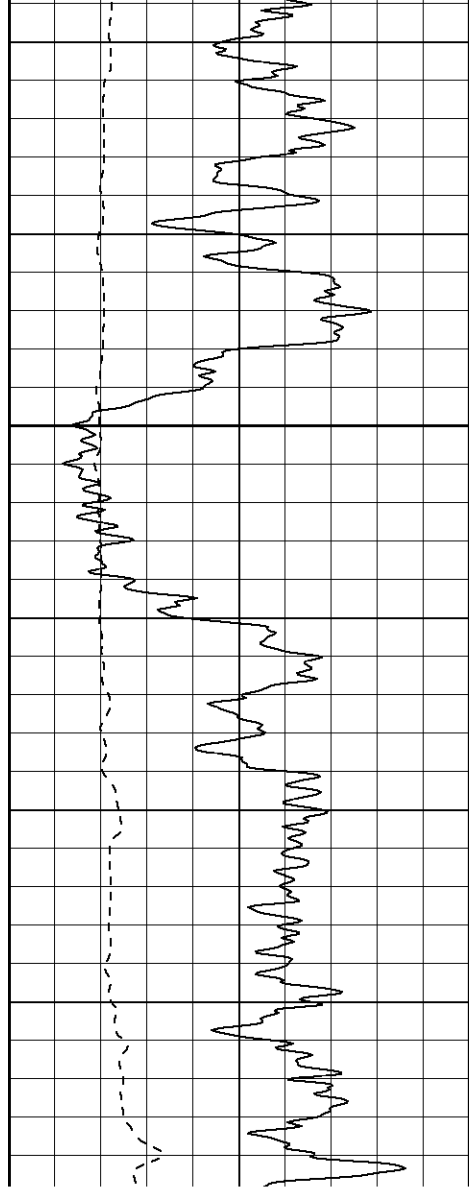




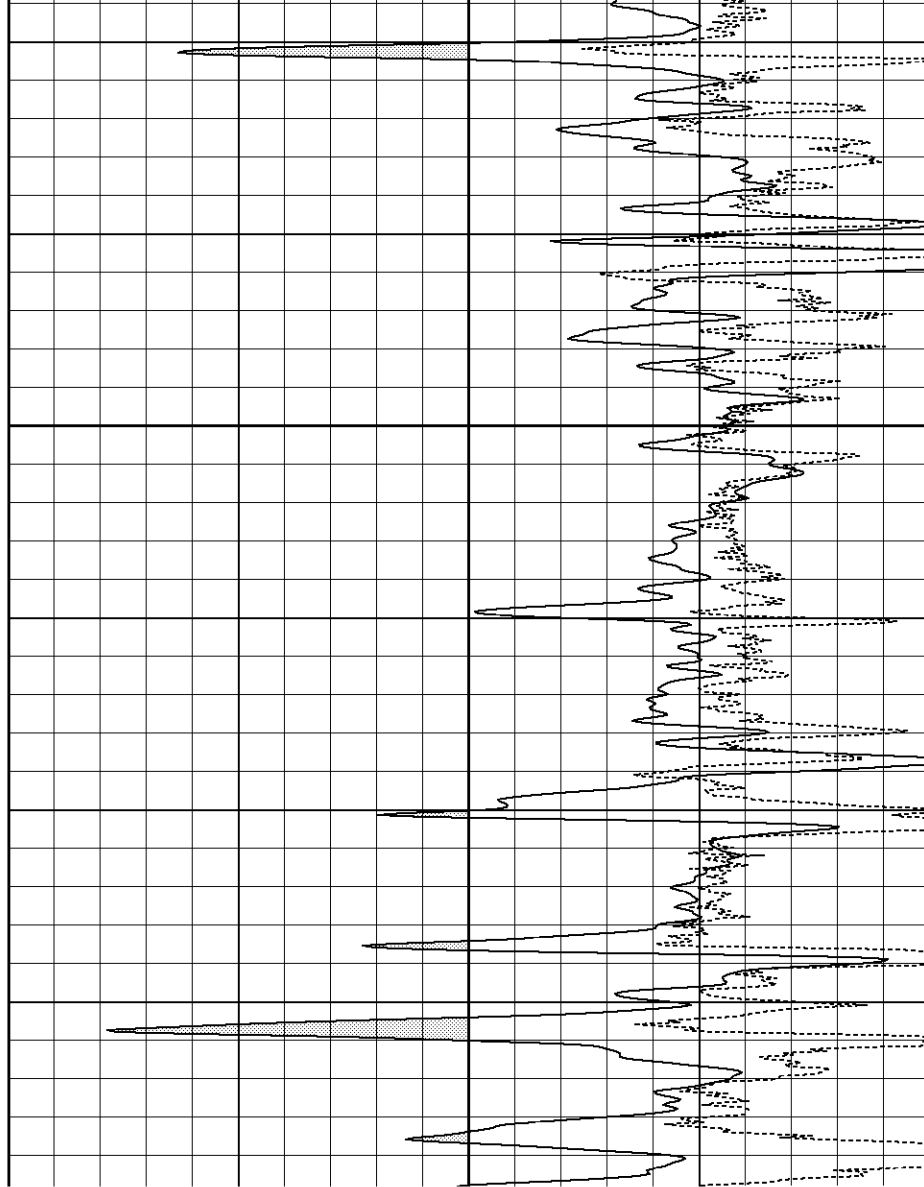


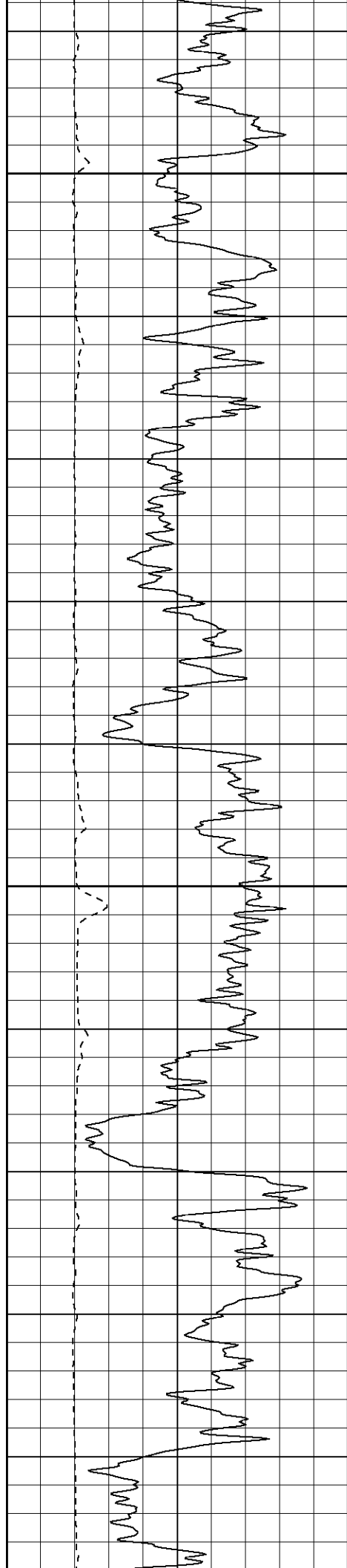
1100





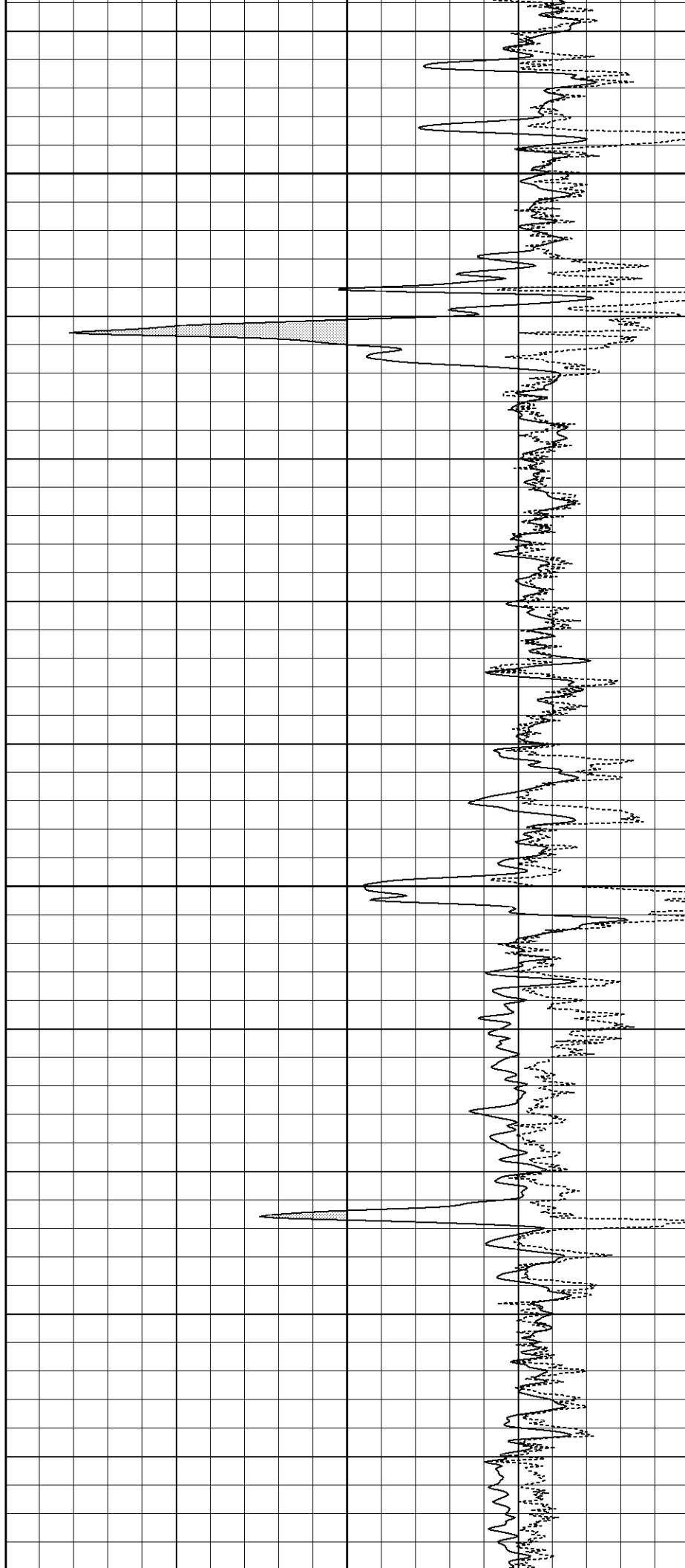
1200

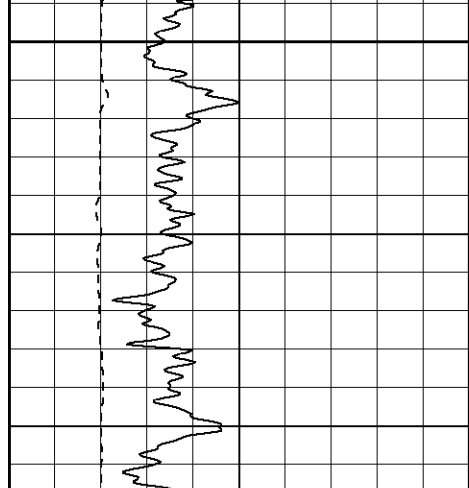




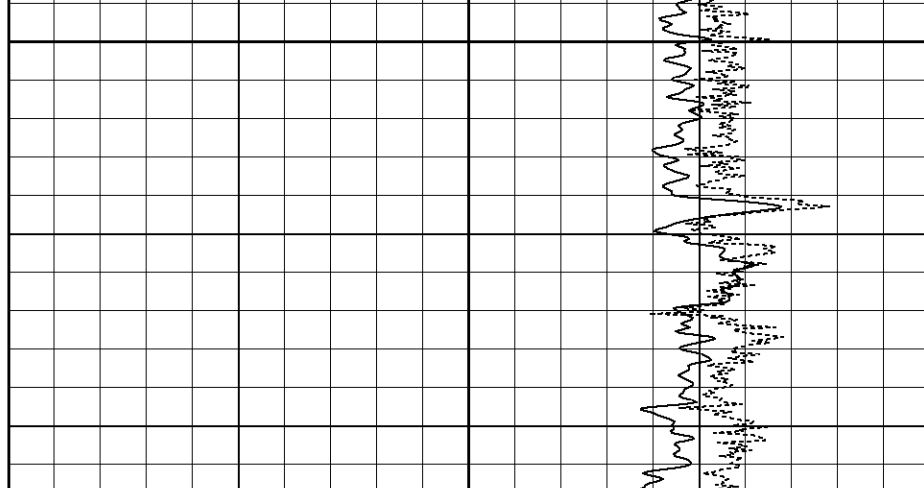
1300

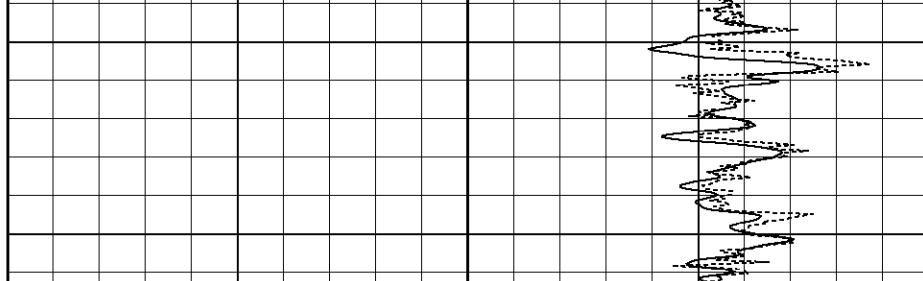
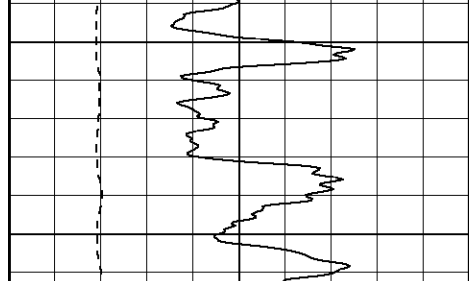
1350

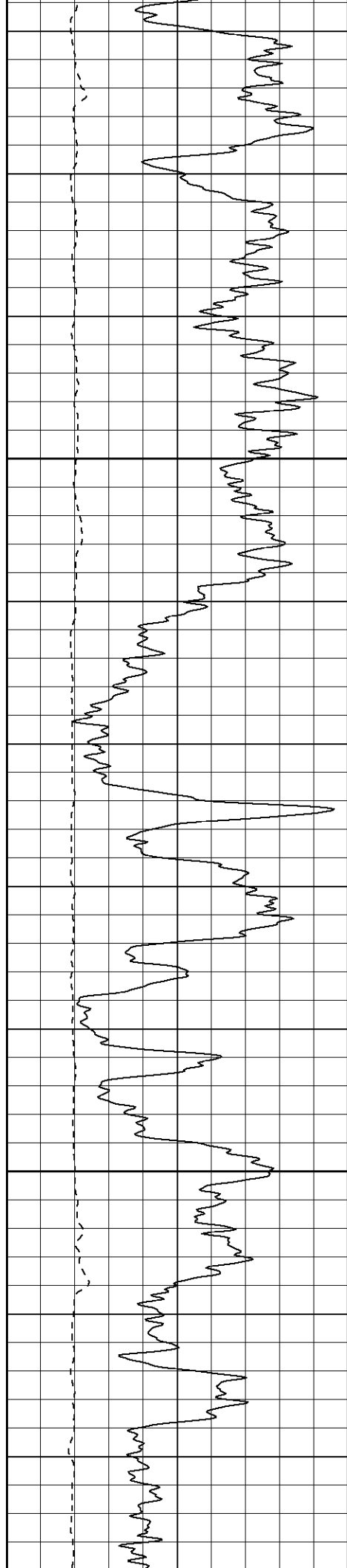




1400

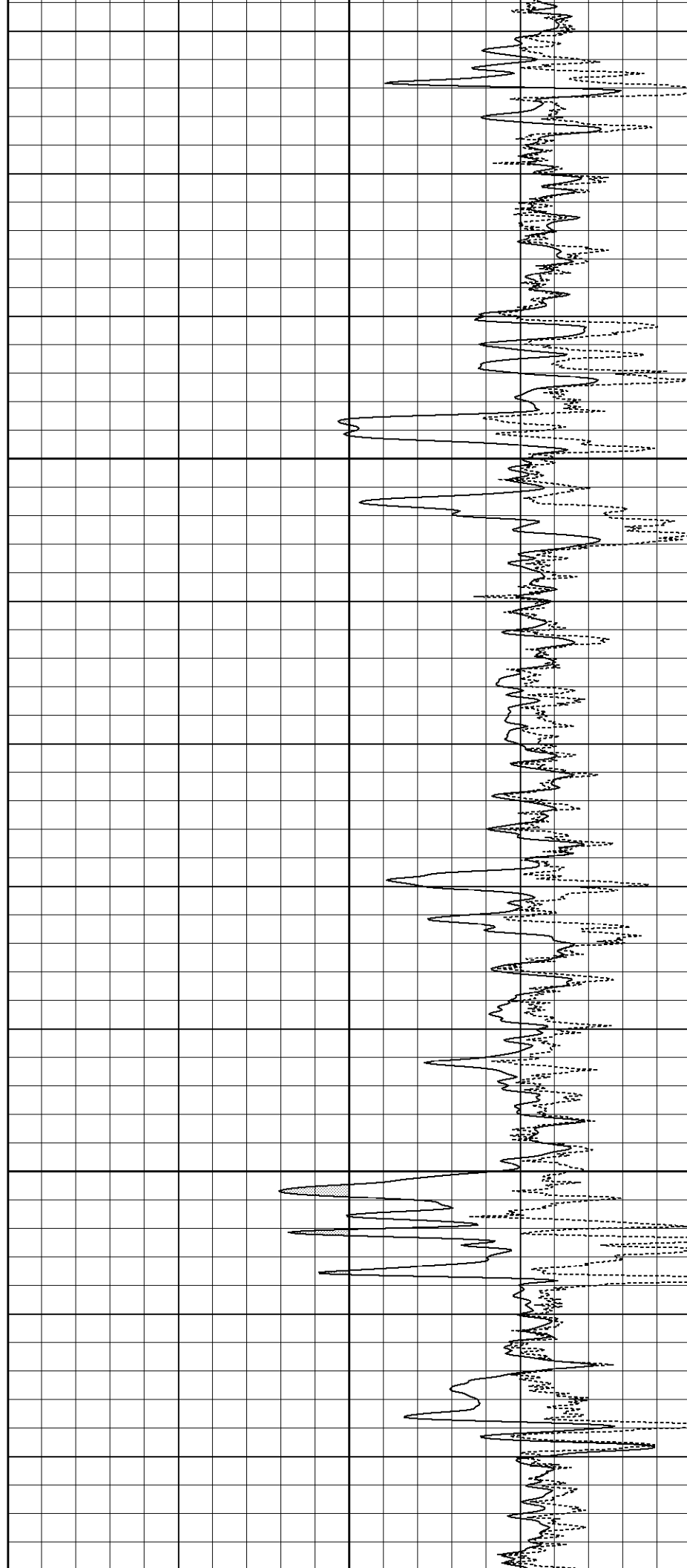


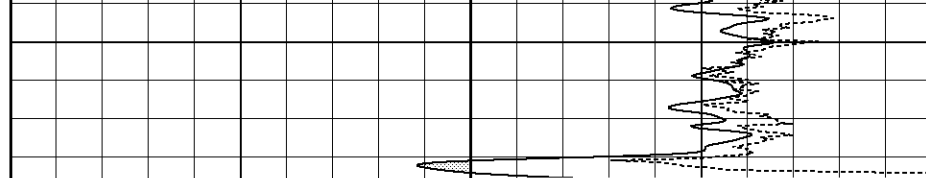
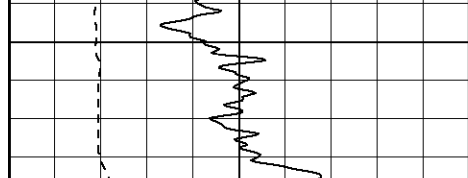


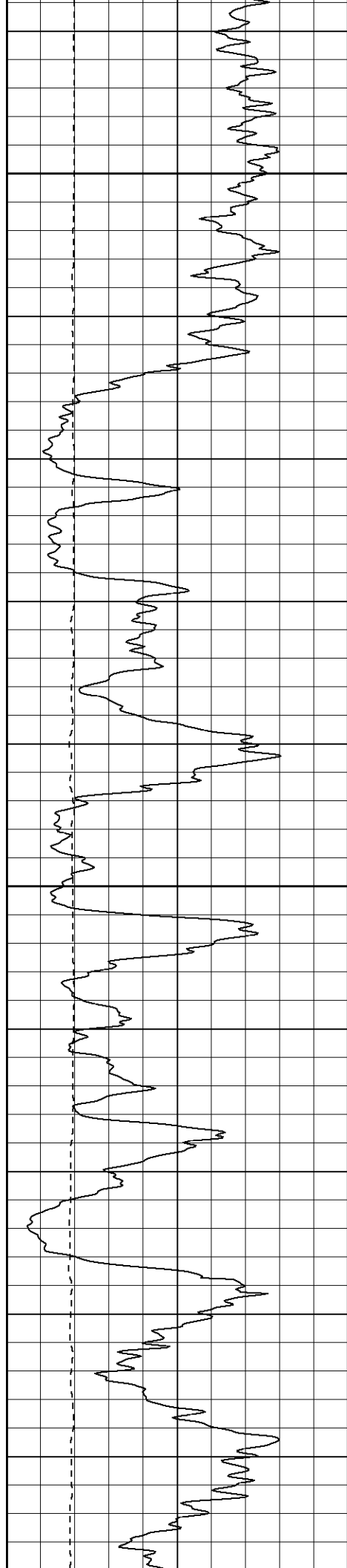


1650

1700

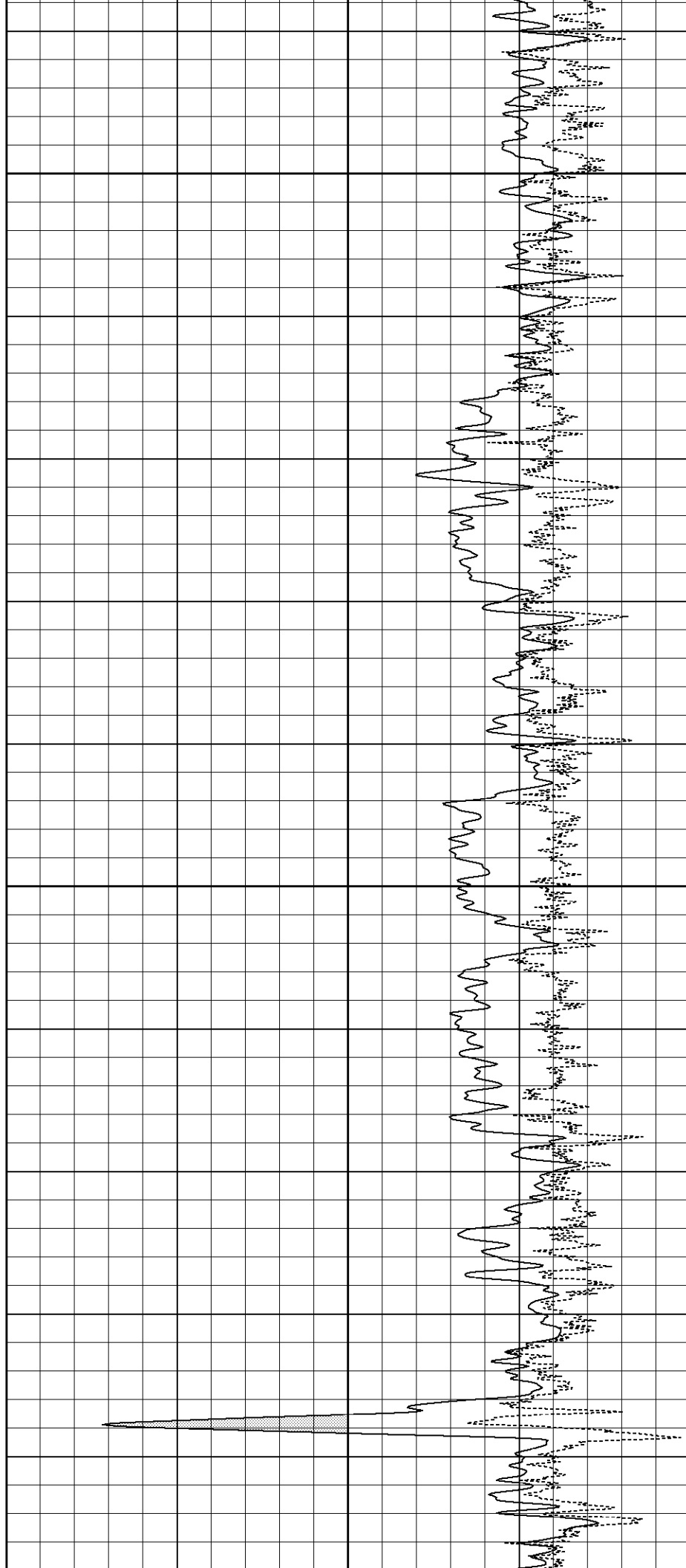


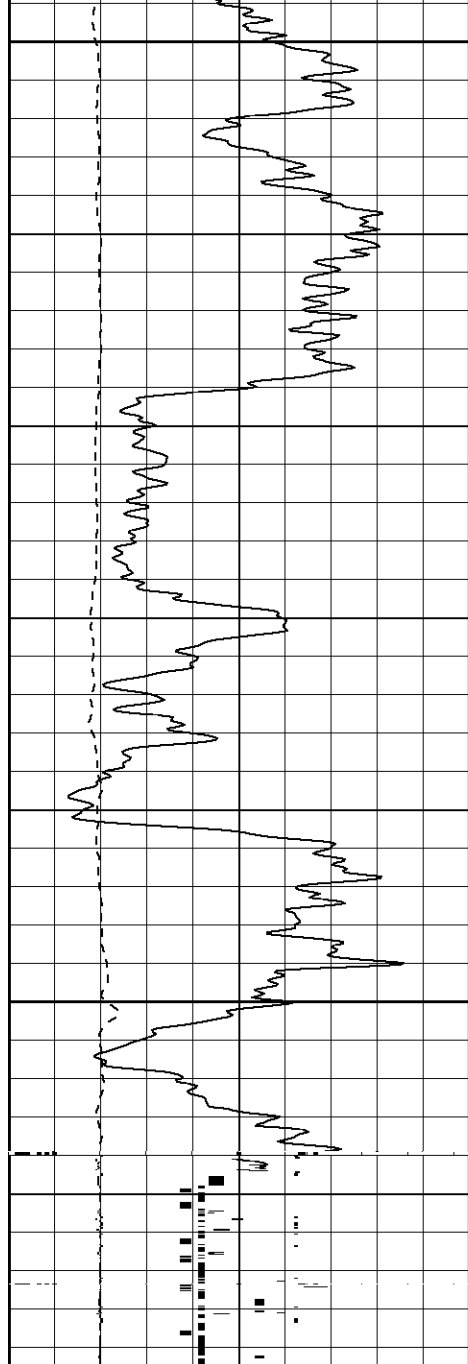




1850

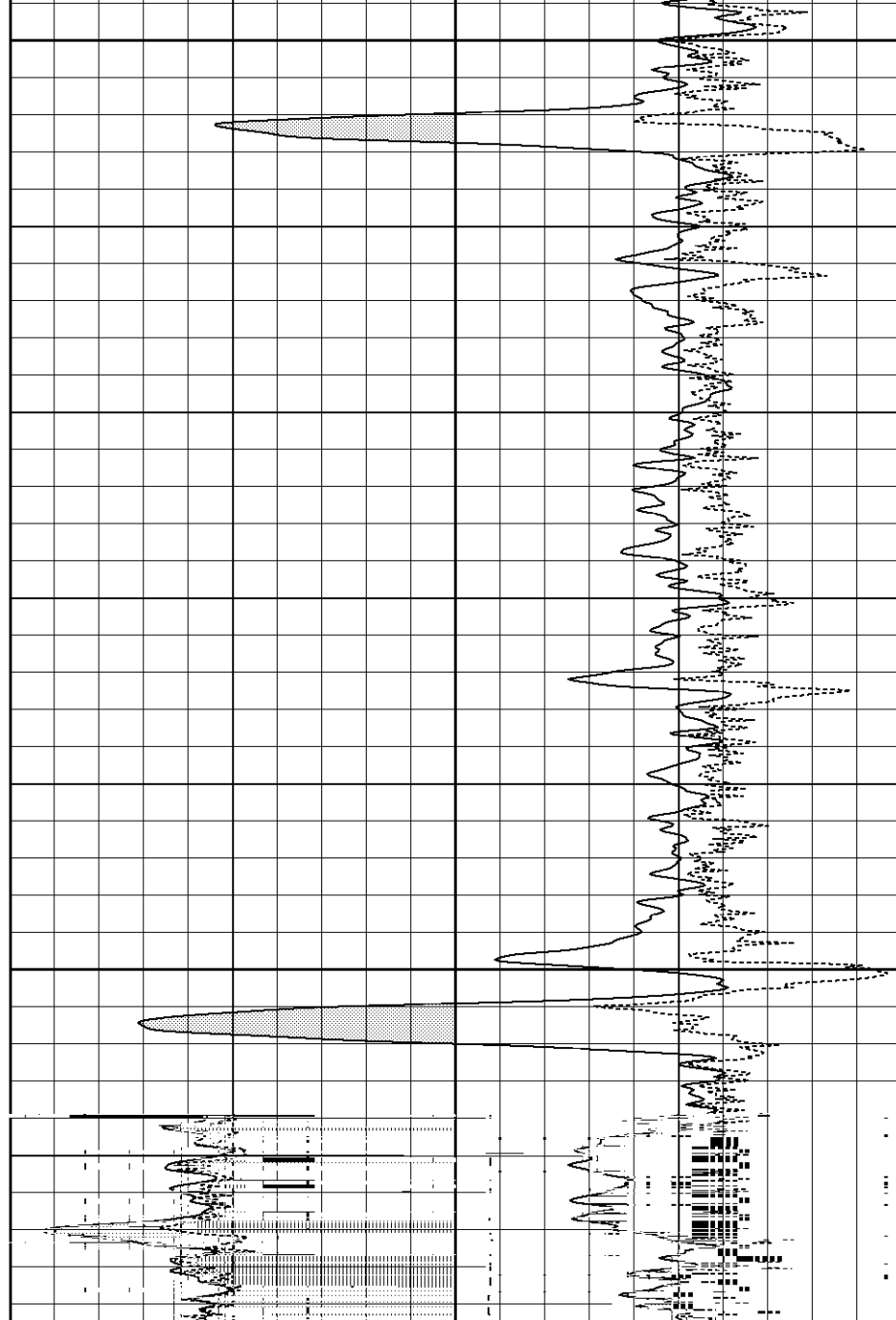
1900

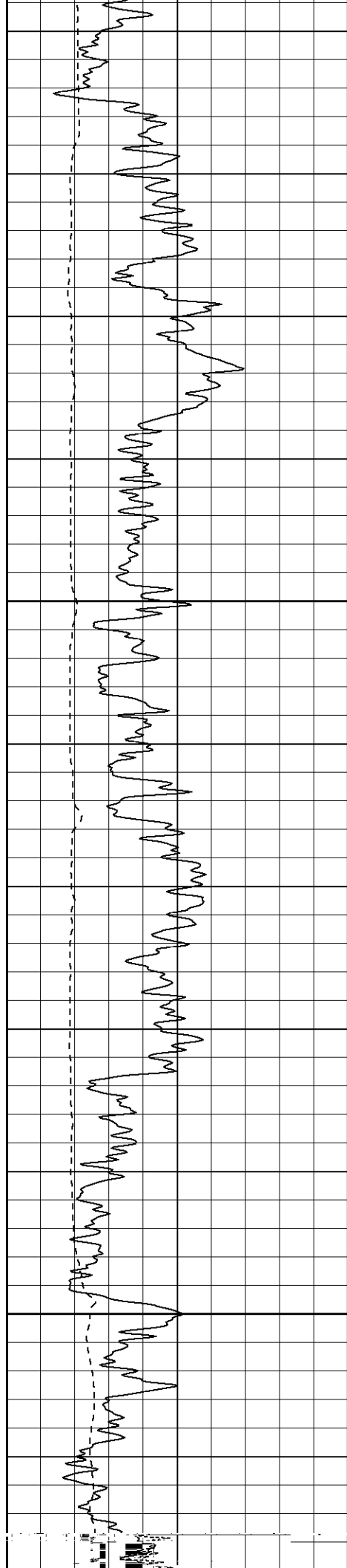




1950

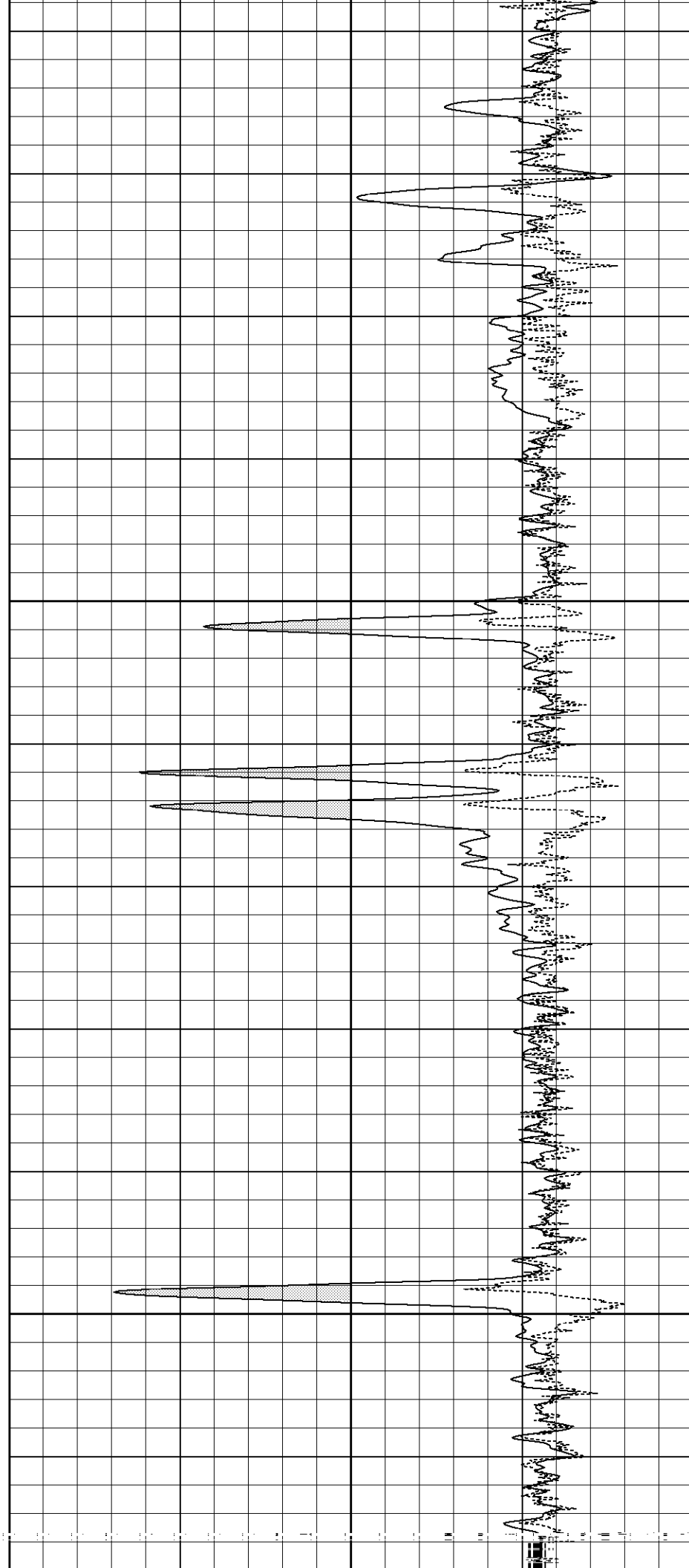
2000

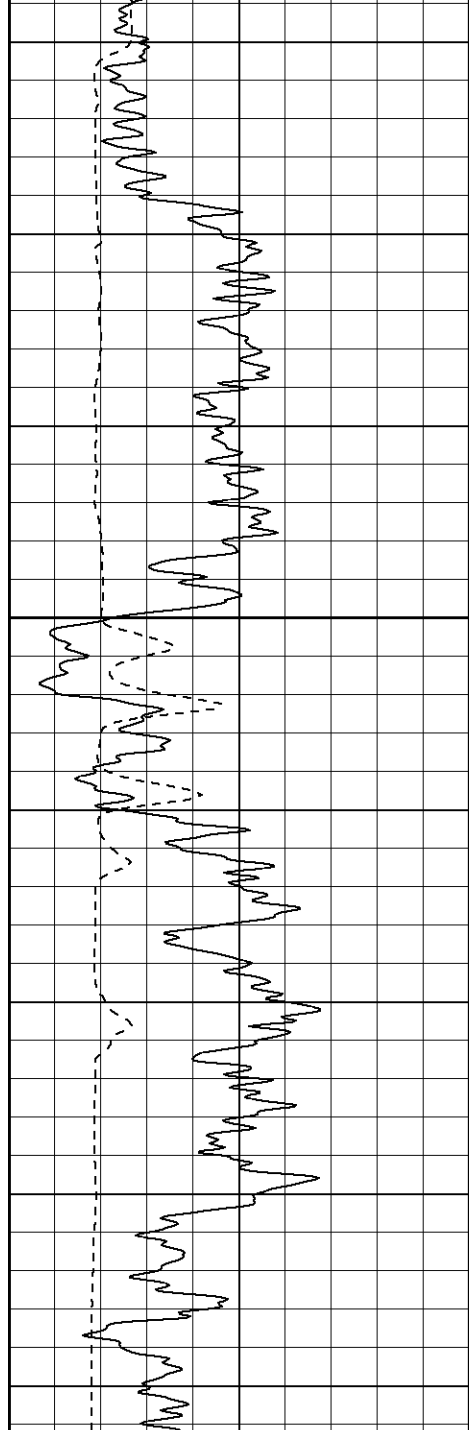




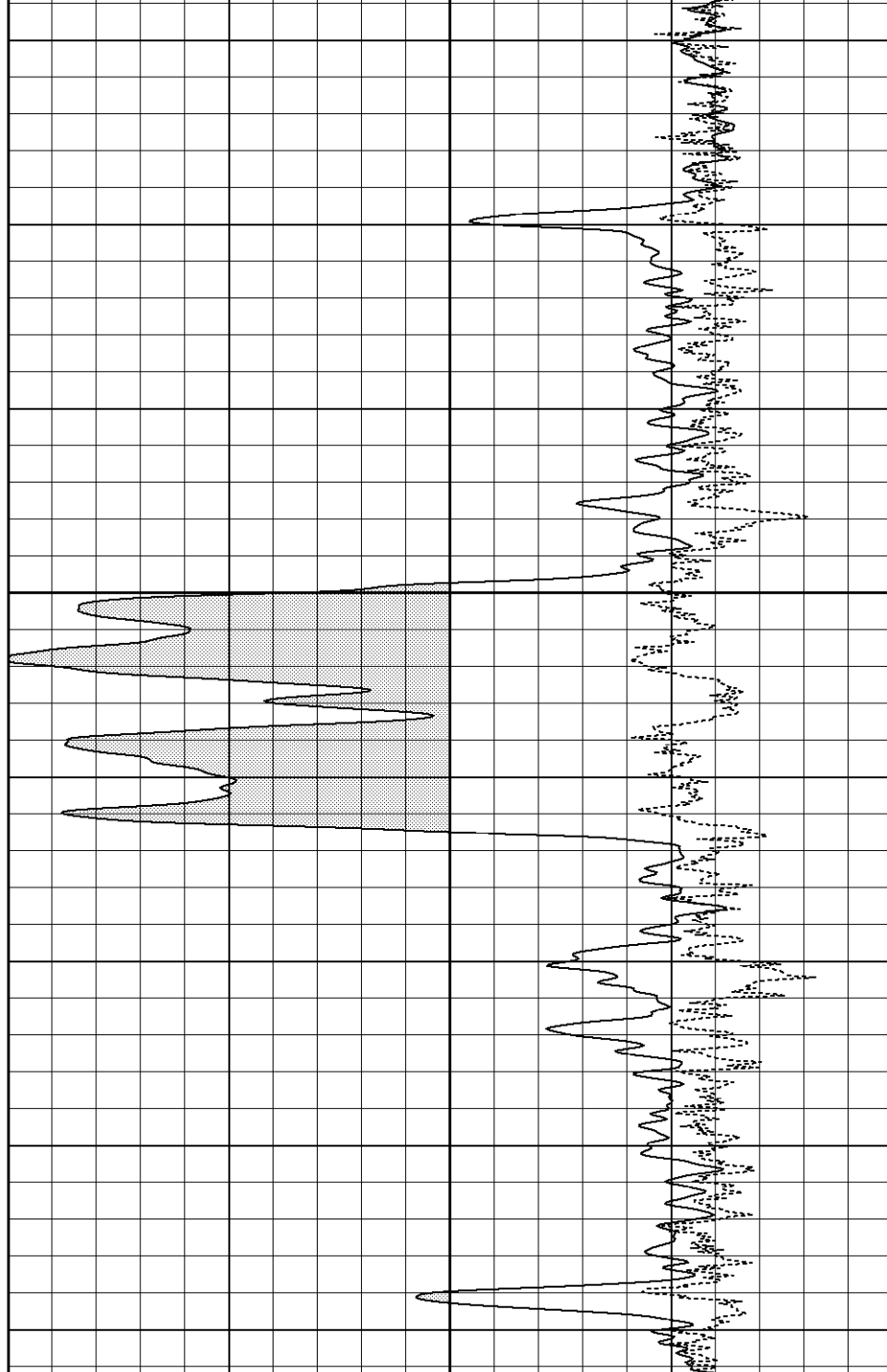
2100

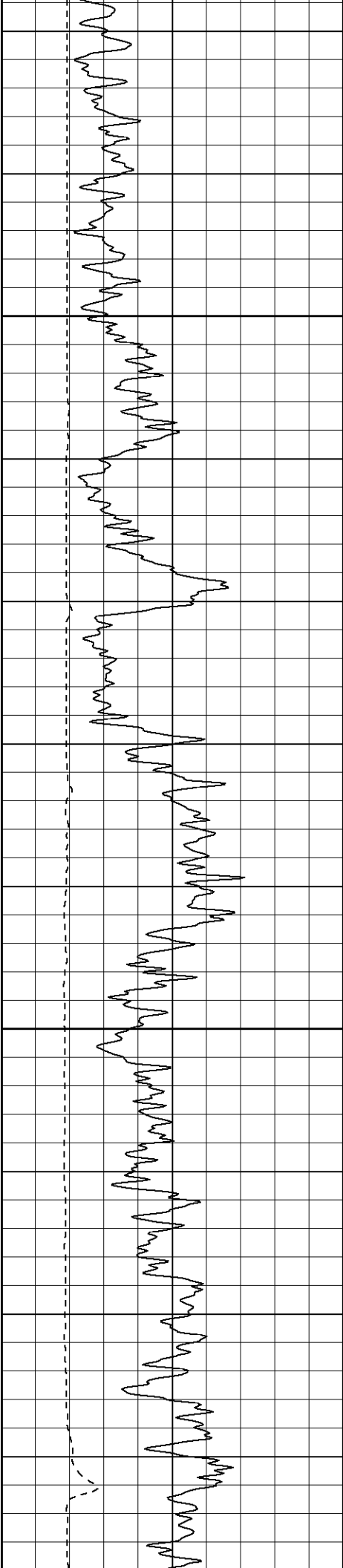
2150





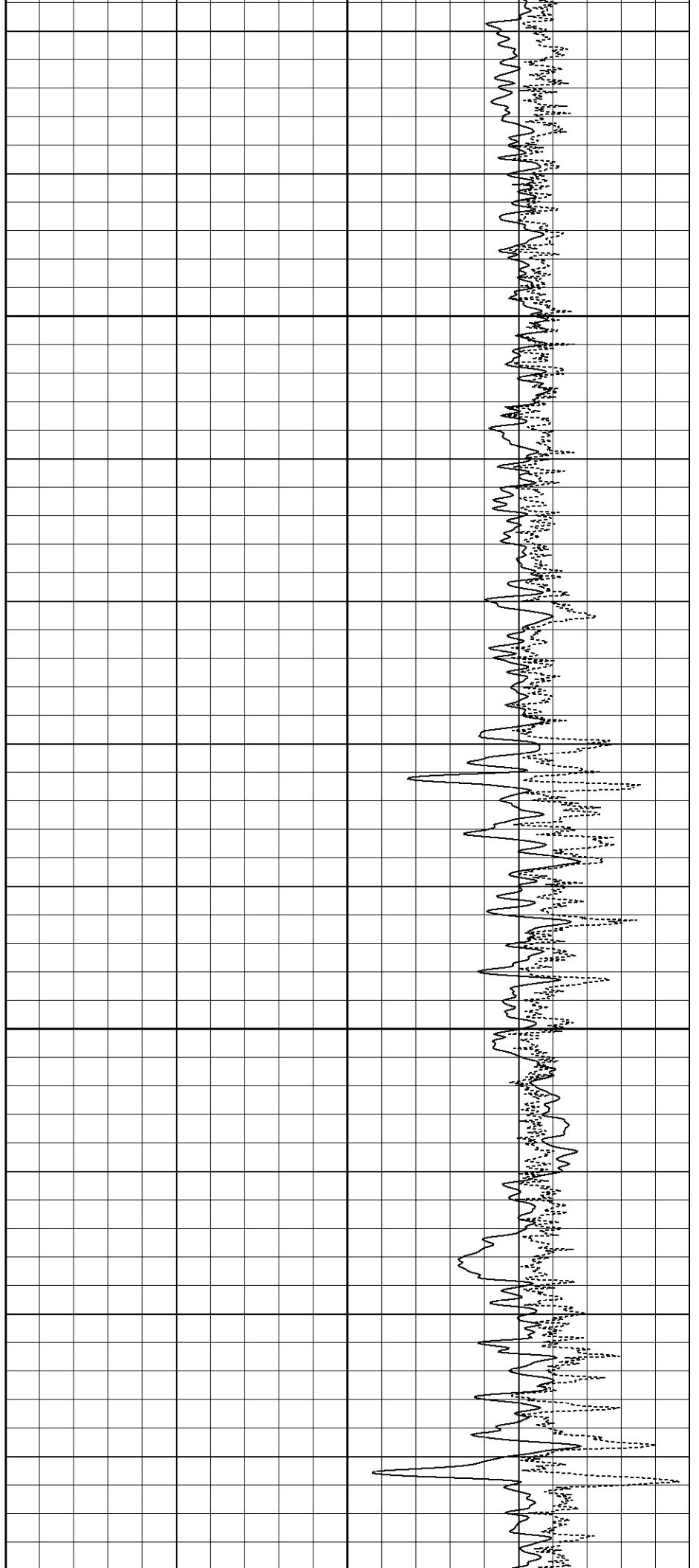
2200

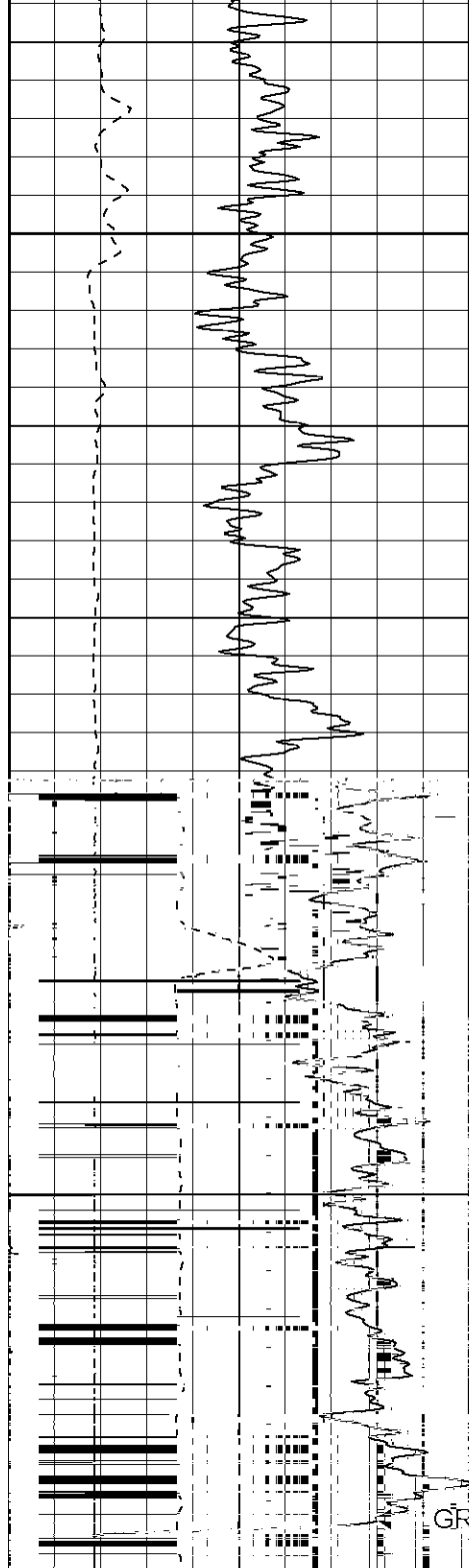




2300

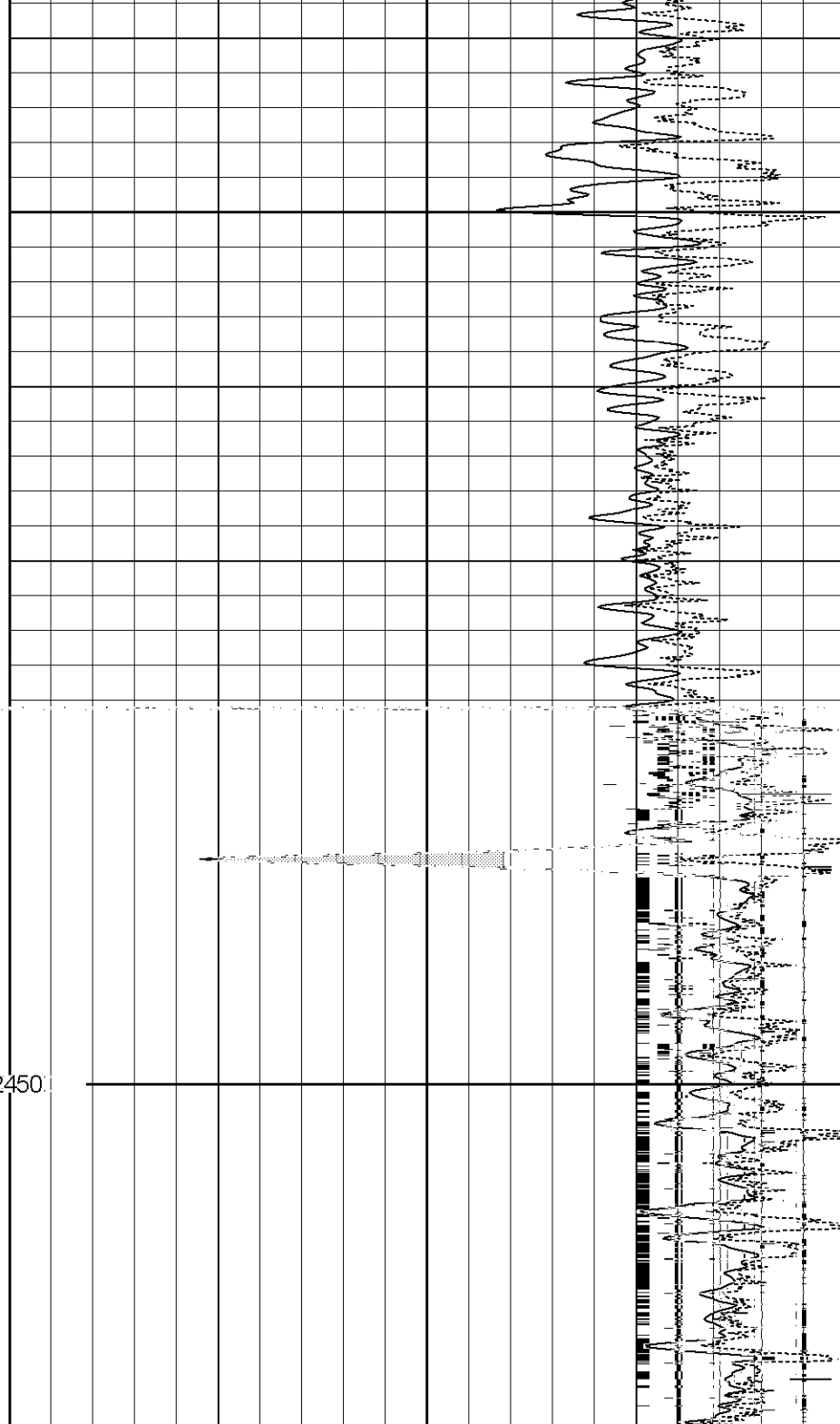
2350





2400

2450



Compensated Density Calibration Report

Serial-Model: 2118-poilex
 Source / Verifier: /
 Master Calibration Performed: Mon Aug 07 13:43:23 2006

Master Calibration

	Density		Far Detector	Near Detector	
Magnesium	1.710	g/cc	696.00	681.00	cps
Aluminum	2.590	g/cc	158.00	466.00	cps
Spine Angle = 75.65			Density/Spine Ratio = 0.575		
	Size		Reading		
Small Ring	7.85	in	4.40	V	
Large Ring	14.00	in	9.25	V	

Gamma Ray Calibration Report

Serial Number: 2118
 Tool Model: poilex
 Performed: Mon Aug 07 09:28:39 2006

Calibrator Value: 1.0 GAPI

Background Reading: 0.0 cps
 Calibrator Reading: 1.0 cps

Sensitivity: 0.7000 GAPI/cps

Total Length:	14.54 ft
Total Weight:	326.00 lb
O.D.	4.00 in