

COMPANY ENCANA OIL & GAS (USA) INC. WELL SHIDELER 30-14B (E30E) FIELD MAMM CREEK CNTY GARFIELD STATE CO										COMPANY ENCANA OIL & GAS (USA) INC. WELL SHIDELER 30-14B(E30E) FIELD MAMM CREEK COUNTY GARFIELD STATE COLORADO														
PERM. DATUM GROUND LEVEL LOG MEASURED FROM K.B. 22 FT. ABOVE PERMANENT DATUM DRILLING MEASURED FROM KELLY BUSHING										ELEV. 6648' ELEV.: K.B. 6670' D.F. 6669' G.L. 6648'														
DATE	06-DEC-2007									API#	05-045-11907													
RUN NO.	ONE																							
DEPTH DRILLER	8260'																							
DEPTH LOGGER	8210'																							
BTM. LOG INTERVAL	8204'																							
TOP LOG INTERVAL	4000'																							
OPEN HOLE SIZE	7.875																							
TYPE FLUID	WATER																							
DENS.	8.3									N/A														
MAX. REC. TEMP.	N/A																							
EST. CEMENT TOP	5030'																							
TIME WELL READY	ROA																							
TIME LOGGER ON BTM.	SEE LOG																							
EQUIP. NO.	14087																							
LOCATION	GRAND JUNCTION																							
RECORDED BY	BRUCE MILLER																							
WITNESSED BY	GARY STAPLETON																							
BOREHOLE RECORD										TUBING RECORD														
RUN NO.	BIT	FROM	TO	SIZE	WGT.	FROM	TO																	
TWO	12.25		1074'																					
THREE	7.875	1074'	8260'																					
CASING RECORD	SIZE	WT/FT	GRADE	TYPE JOINT	TOP										BOTTOM									
SURFACE STRING																								
PROT. STRING	9.625"	36#			SURF										1074'									
PROD. STRING	4.500"	11.6	I-80		SURF										8256'									
LINER																								
SEE REMARKS																								

All interpretations of log data are opinions based on inferences from electrical or other measurements. We do not guarantee the accuracy or correctness of any interpretation or recommendation and we shall not be liable or responsible for any loss, cost, damages or expenses incurred or sustained by anyone resulting from any interpretation or recommendation made by any of our employees or agents.

REMARKS		Rig: NABORS M-16		Service Order # 142233	
LOG WAS RAN ON WIRELINE DEPTH USING 22' K.B.					
LOGGED W/O PSI. @ SURFACE. WELL BORE FOUIDS WERE MOSTLY MUD FROM DRILLING.					
MARKER JOINTS WHERE FOUND @ 6105' - 6126' AND 7097'-7118'.					
TOOL INDICATES WELL IS DEVIATED. TOOL PICKED UP EXTRA NOISE ON BOTTOM OF HOLE.					
YOUR CREW TODAY IS:KENNY FAVORITE AND SHAWN KAISER.					
THANK YOU FOR CHOOSING WEATHERFORD WIRELINE SERVICES GRND. JUNC. (970)-263-8501					
		EQUIPMENT DATA			
Bit Size	7.875	Run No.	Tool Type	Tool No.	Other
Well Status	NEW DRILL	ONE	CENA	116	
Surface Pressure		ONE	CTBA	228	
Shut In	Flowing	ONE	GRBA	229	
0 PSI.		ONE	CENB	258	
		ONE	SBTA	248	
		ONE	BOTTOM CENT.	103	

DEPTH SCALE: 5":100'

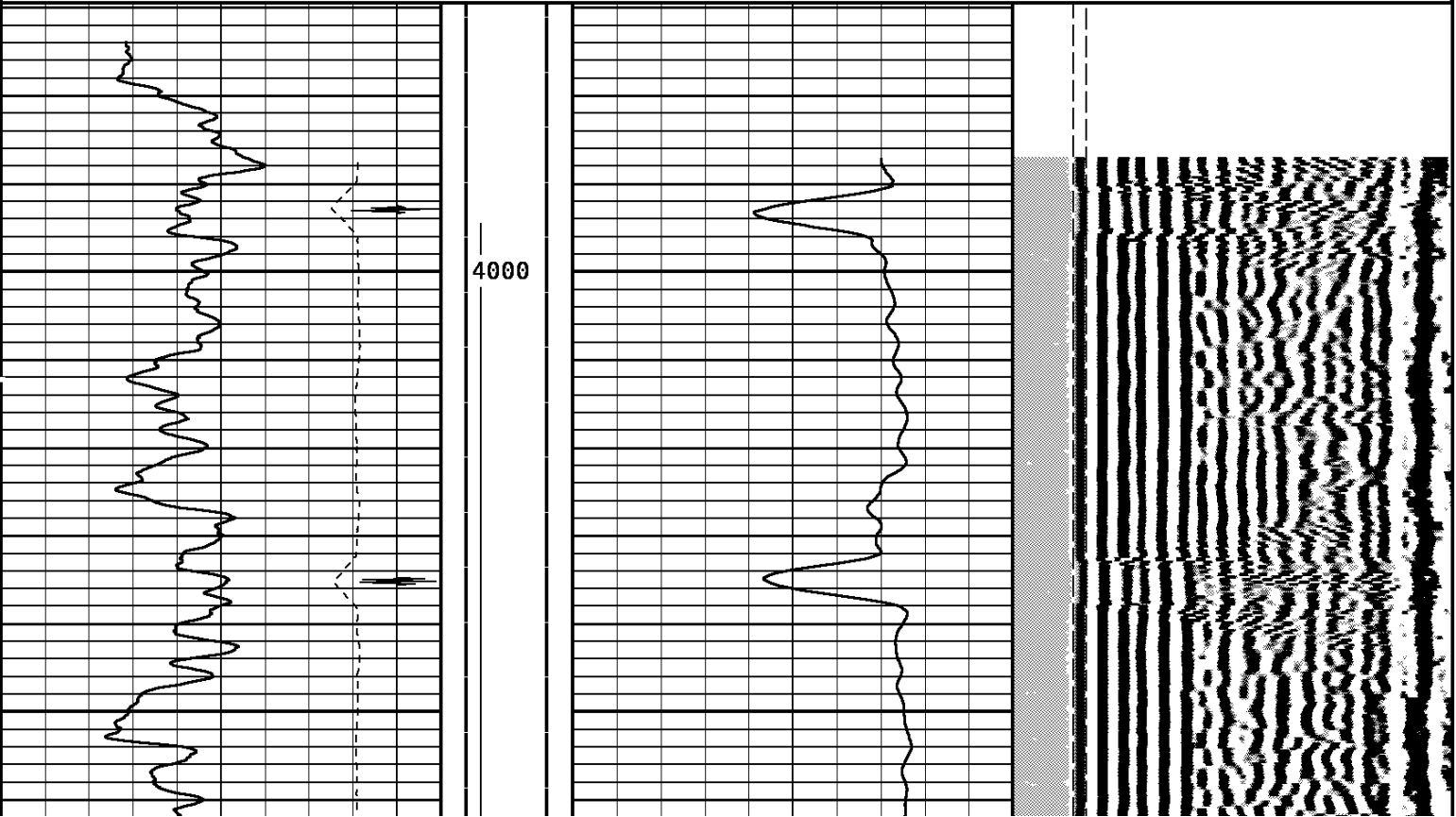
VERSION: 70914123R"

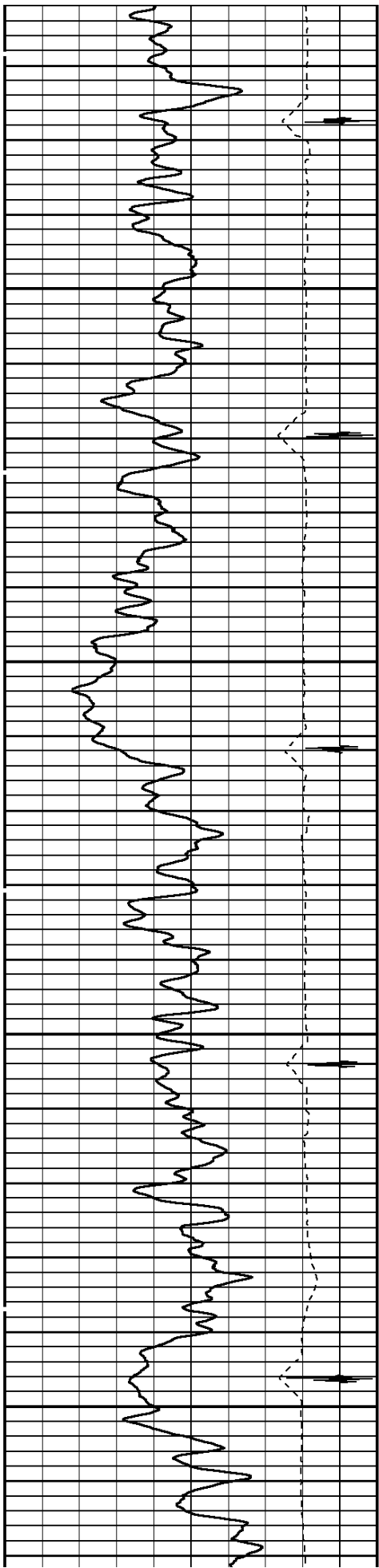
MAIN PASS

142233 SBTMAIN

FINISH DEPTH: 3993.2 Feet DIRECTION: UP DATE: 12/06/2007 TIME: 09:57 MODE: ORIGINAL

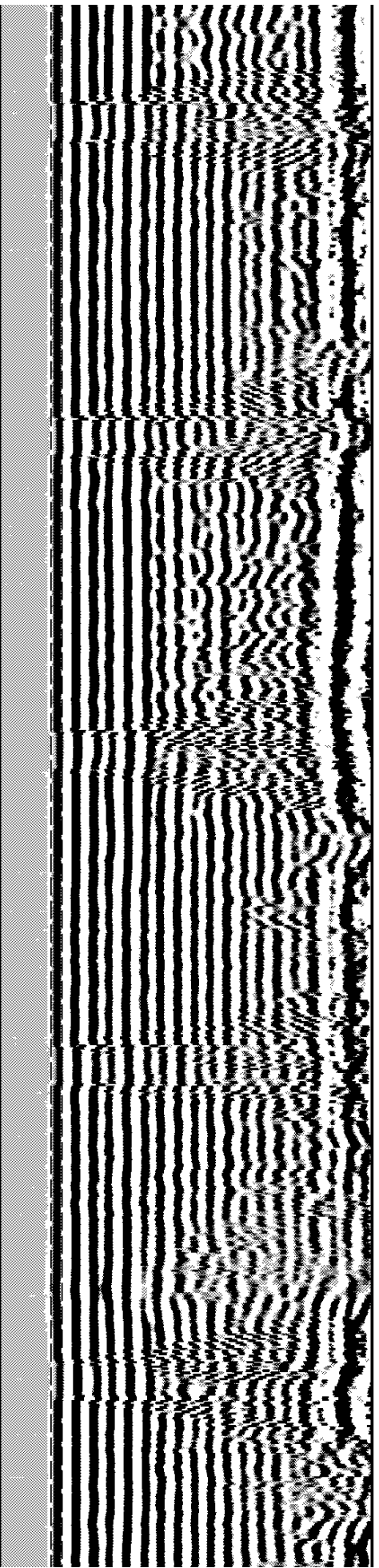
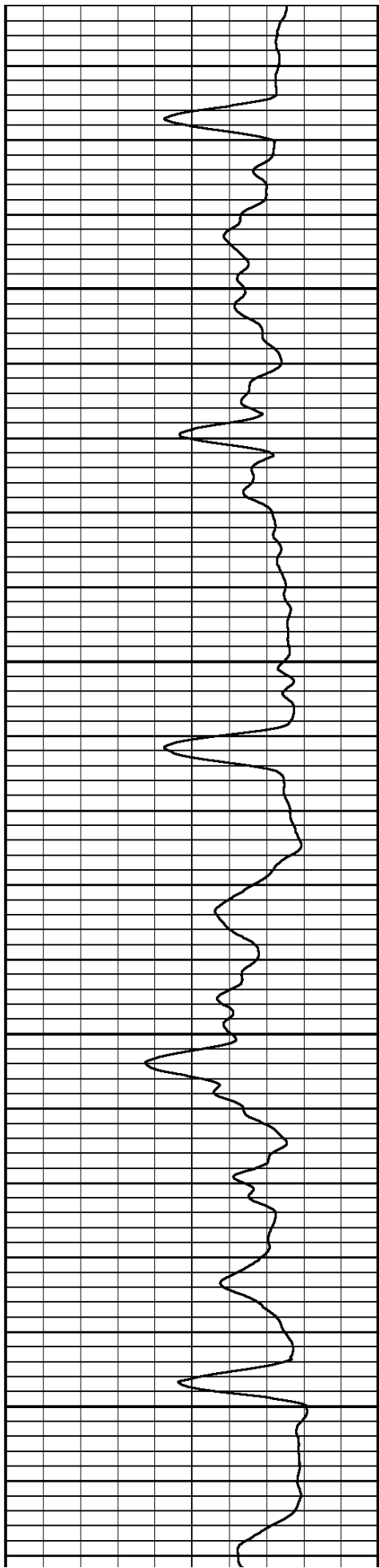
COLLAR LOCATOR			FREE PIPE GATE		
-9000	Millivolts	990	200	Microseconds	1200
GAMMA RAY			FREE PIPE GATE		
0	API	150	200	Microseconds	1200
TRAVEL TIME 3FT			VARIABLE DENSITY 5FT		
310	Microseconds	210	200	Microseconds	1200
TENSION			AMPLITUDE 3FT		
0	2200	0	0	Millivolts	100

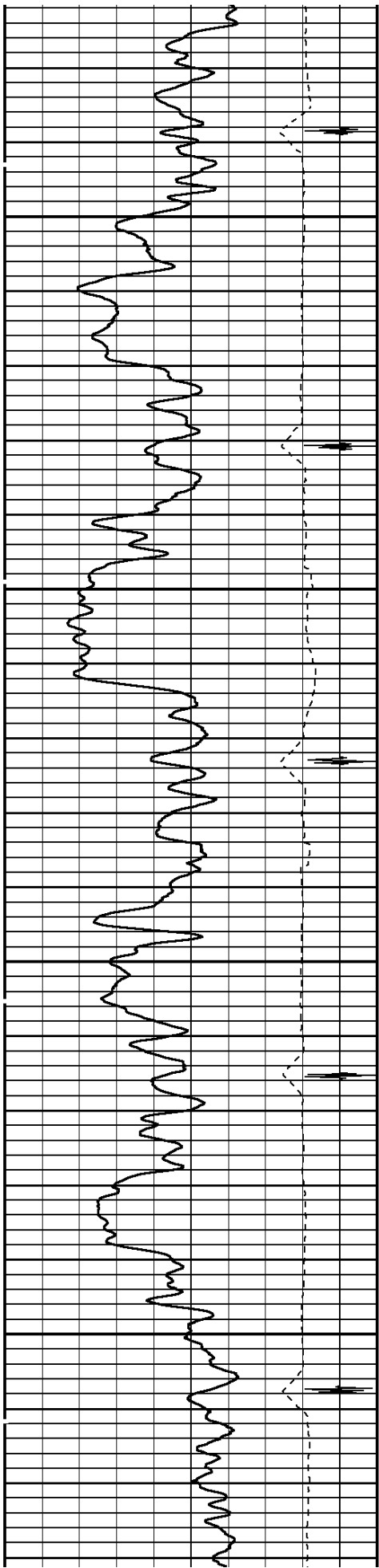




4100

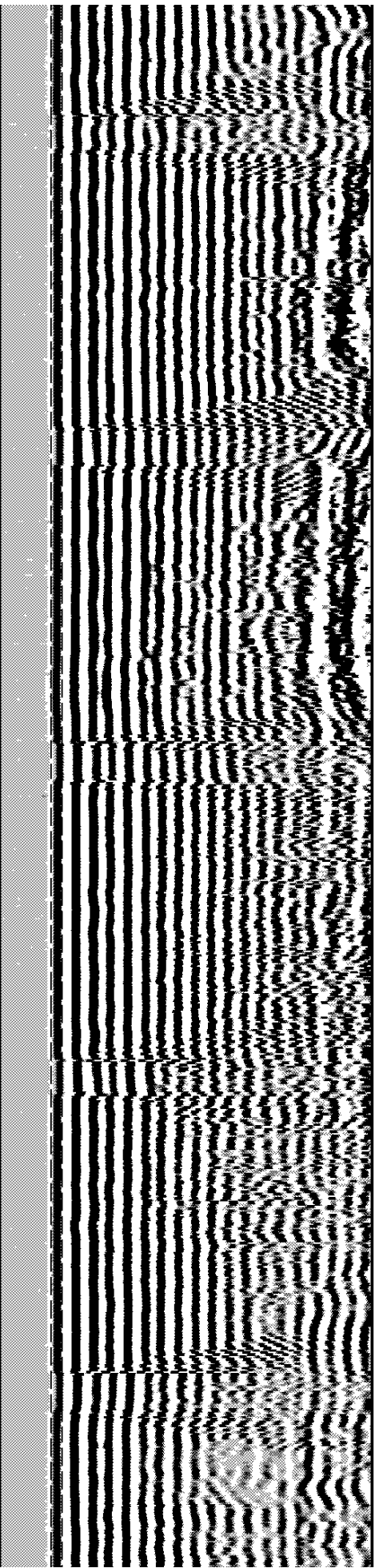
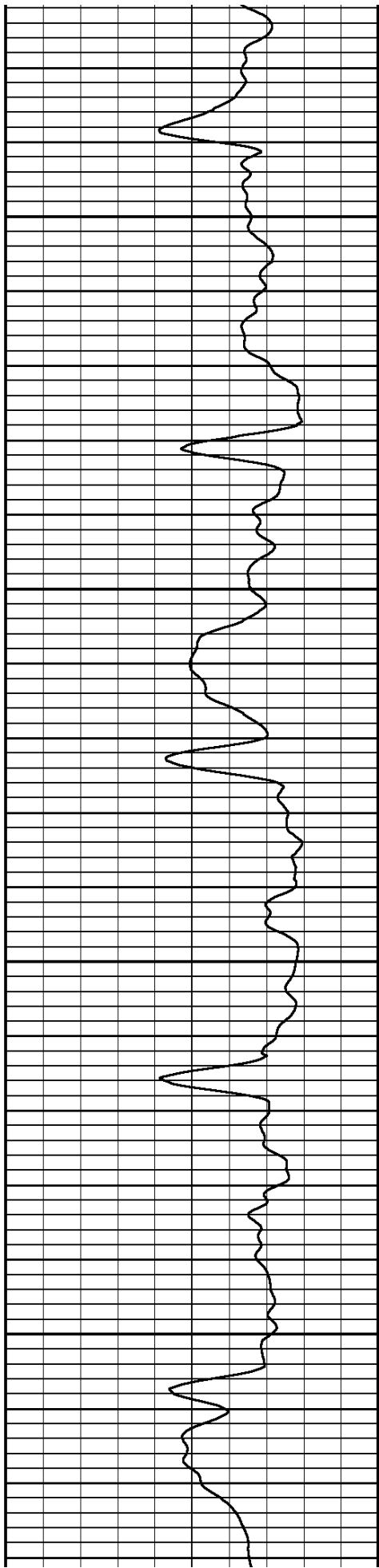
4200

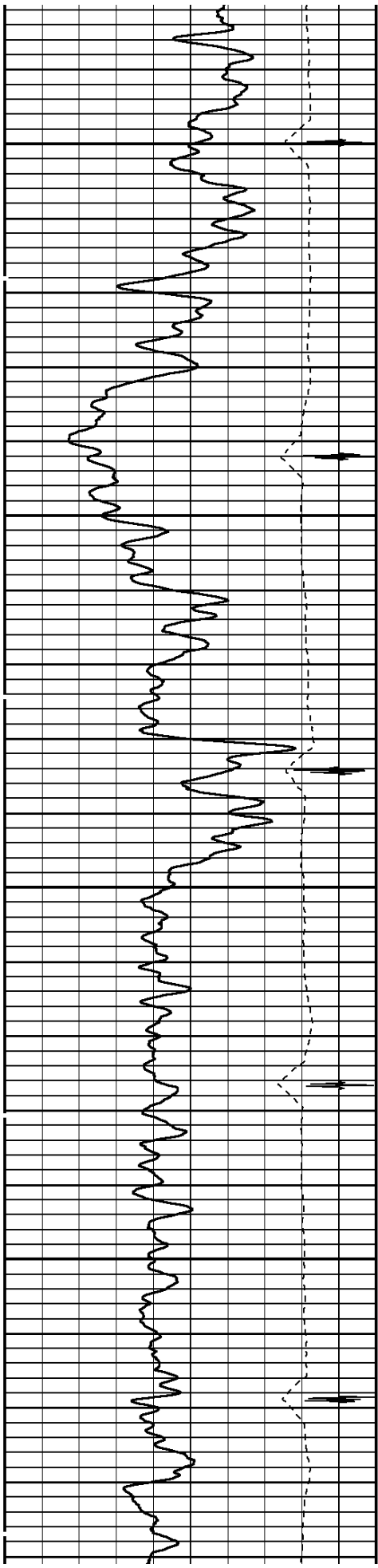




4300

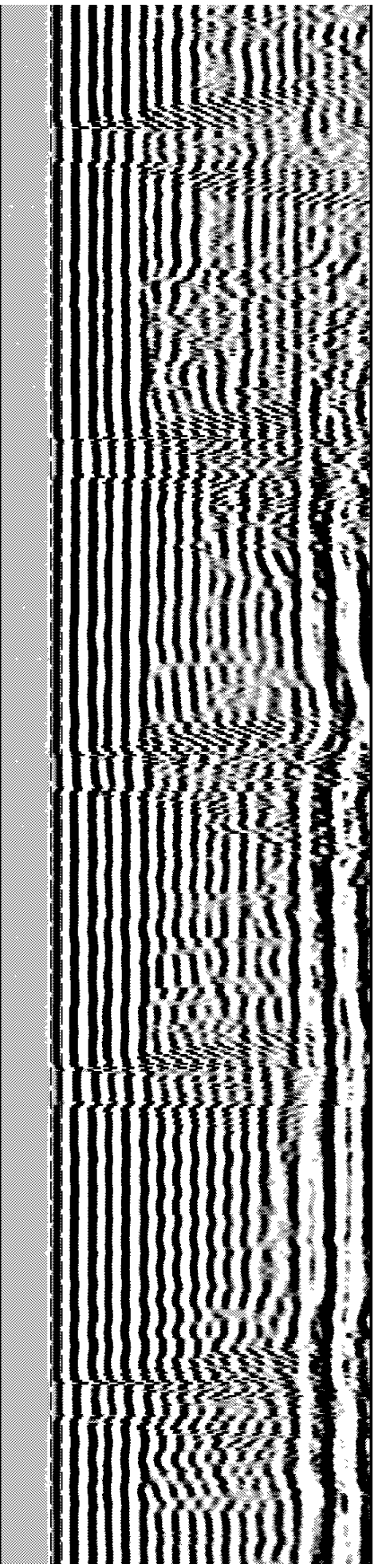
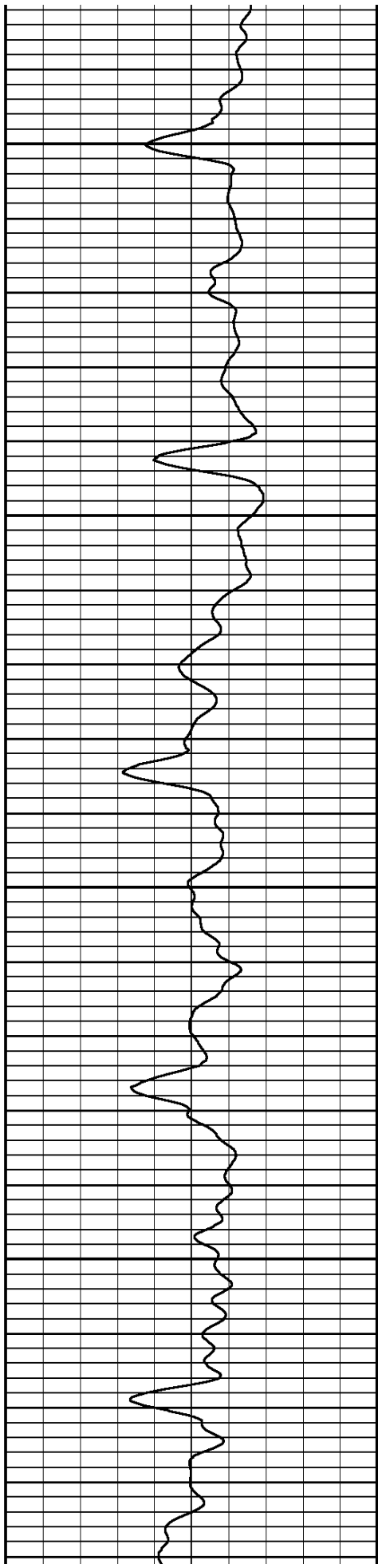
4400

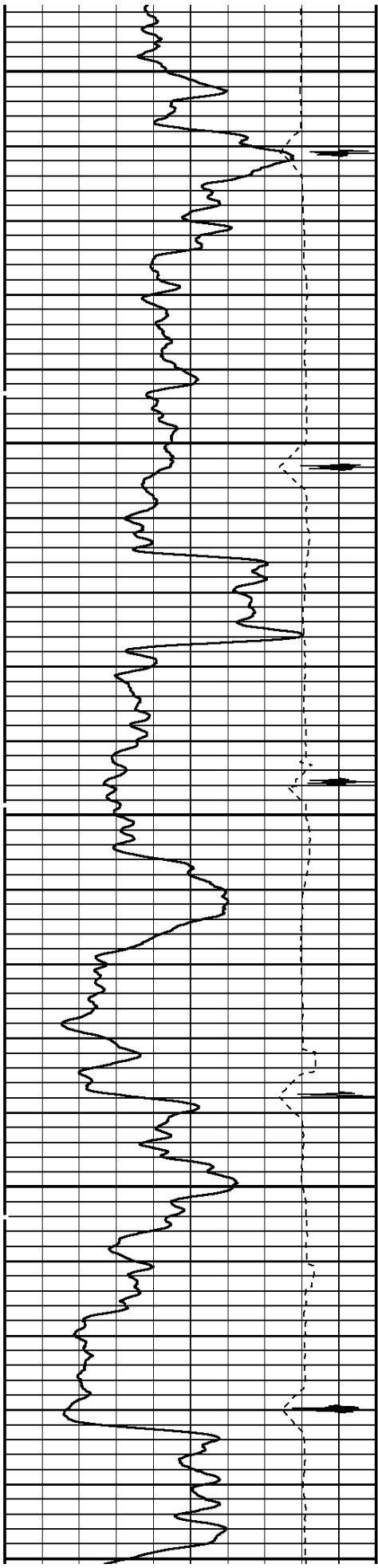




4500

4600

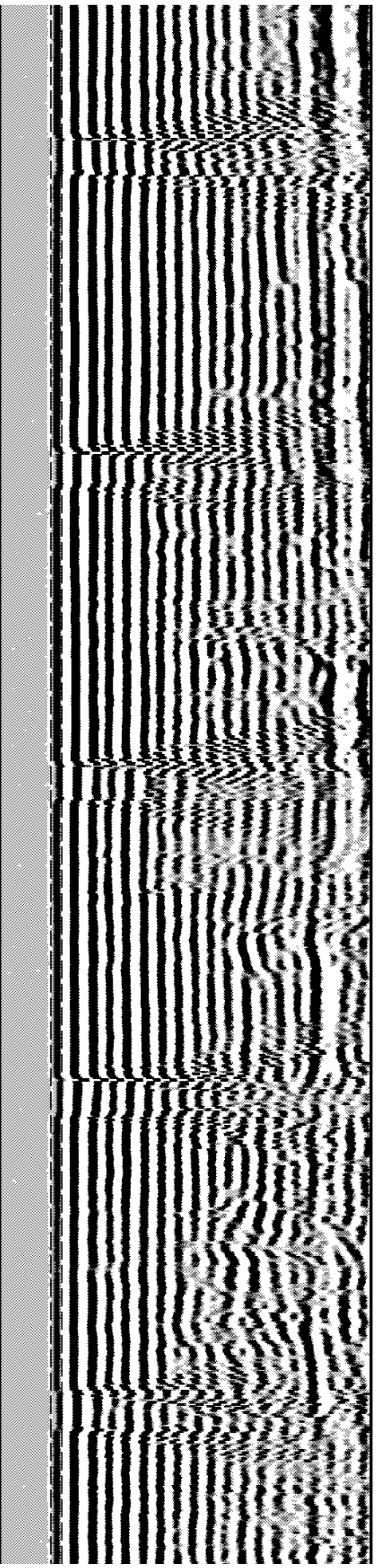
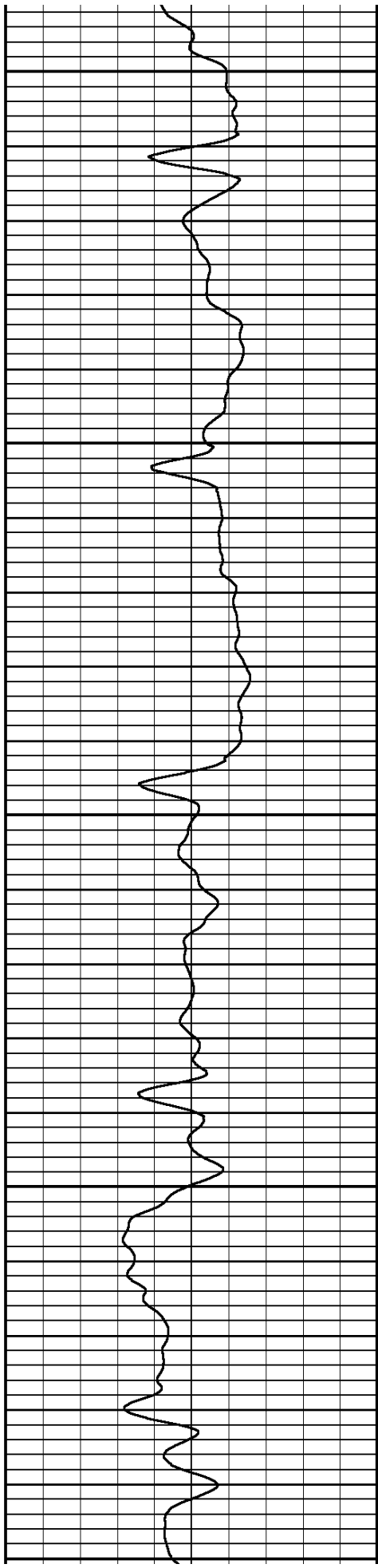


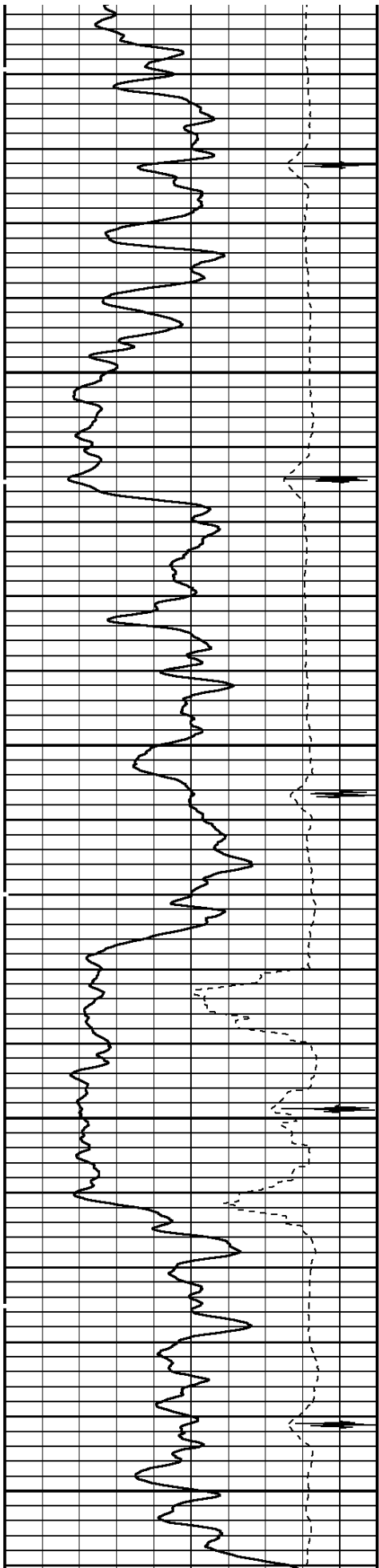


4700

4800

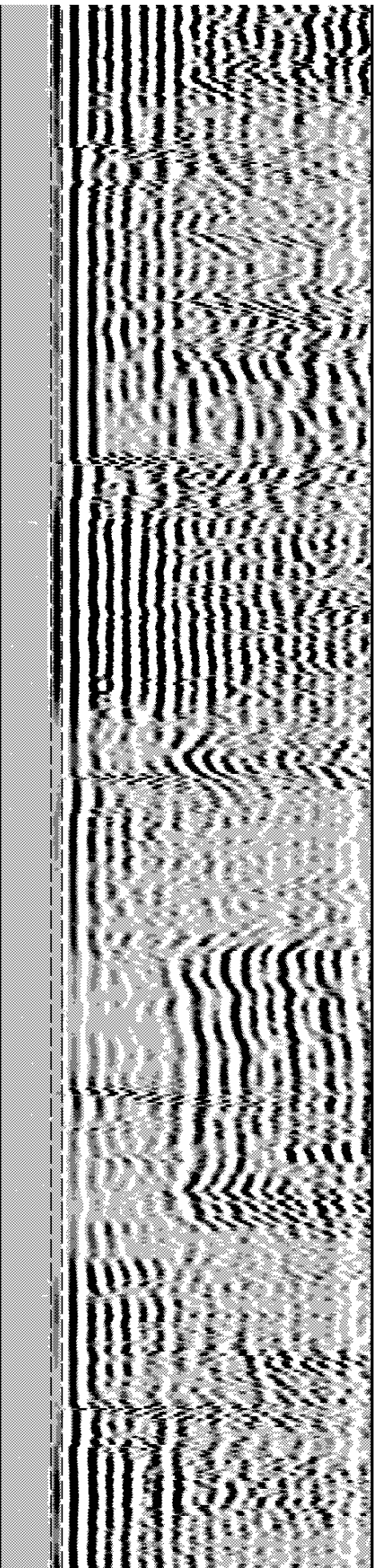
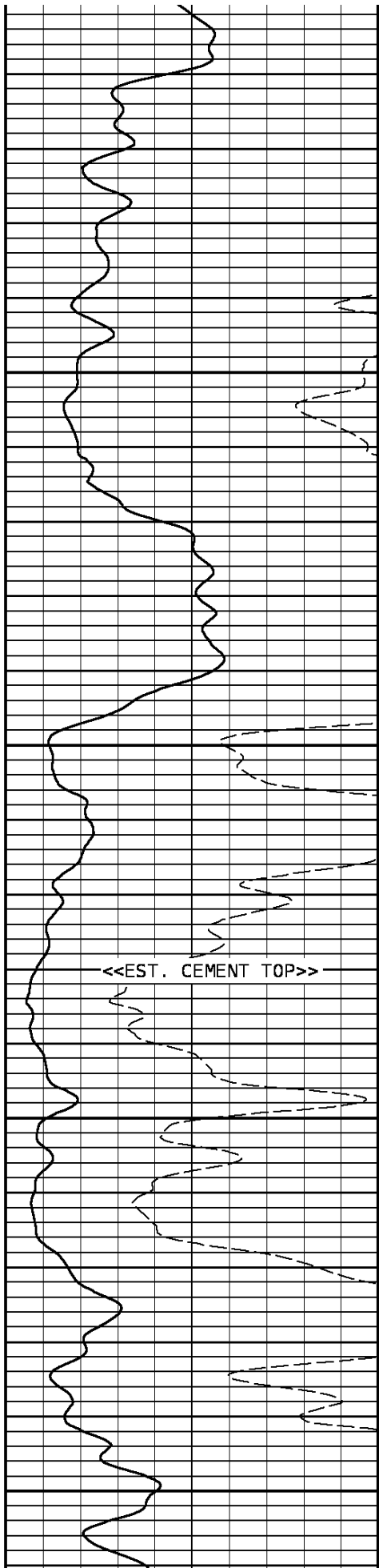
4900

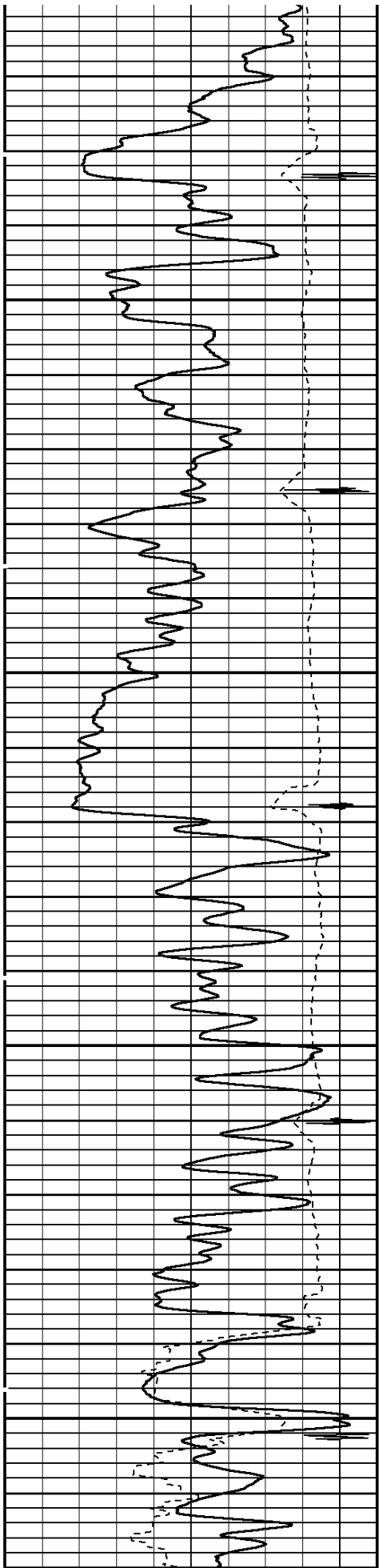




5000

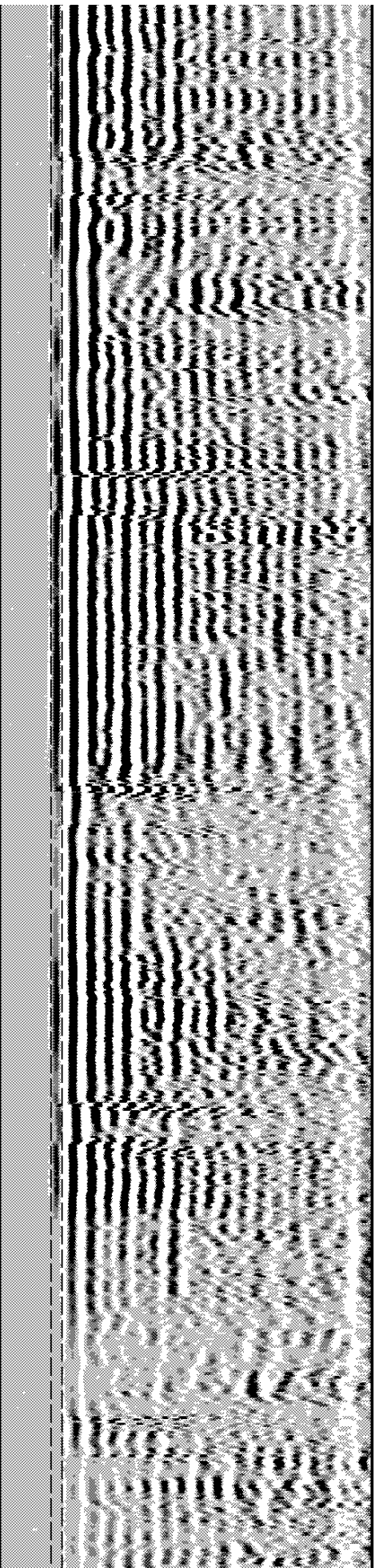
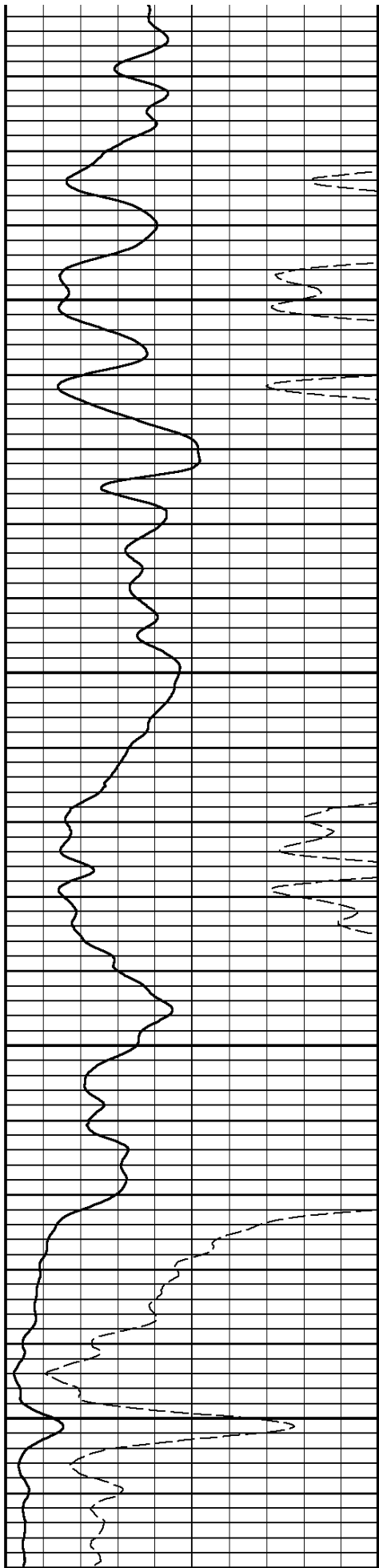
5100

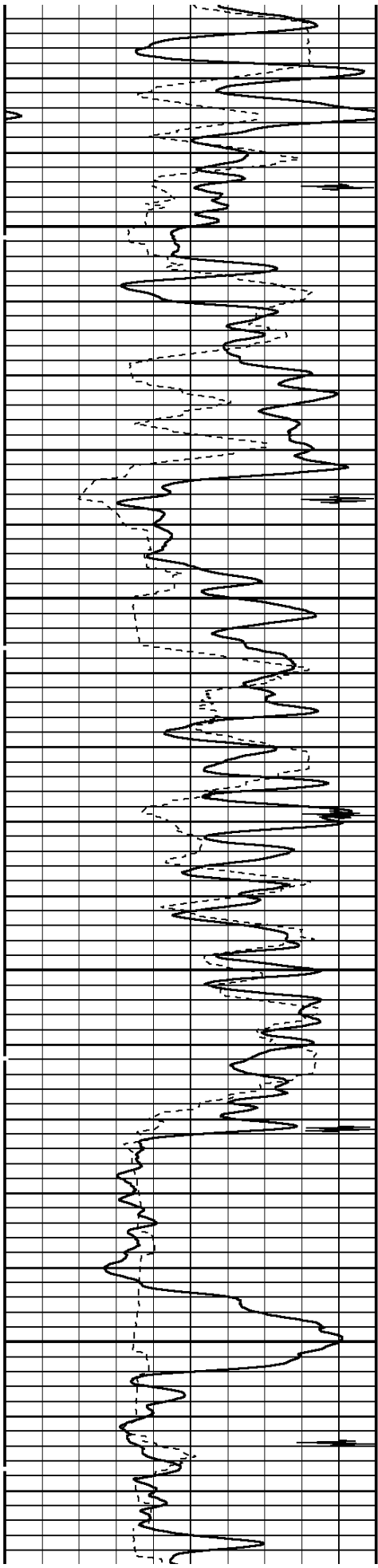




5200

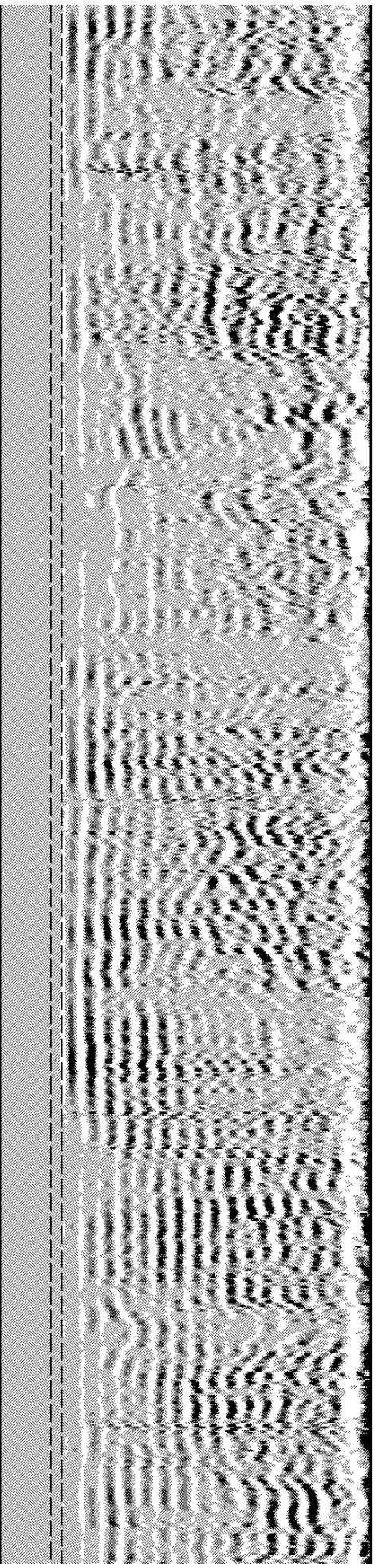
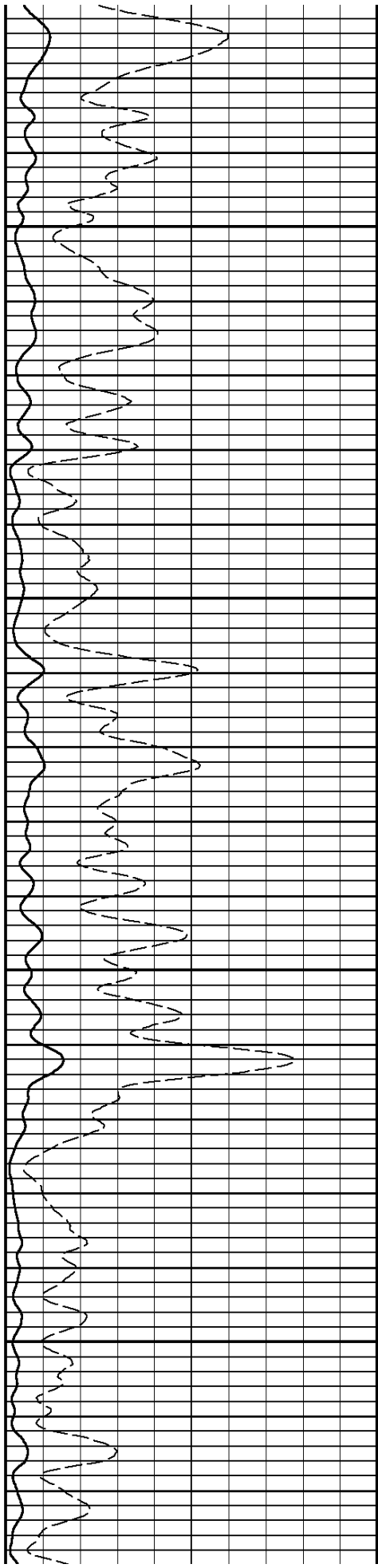
5300

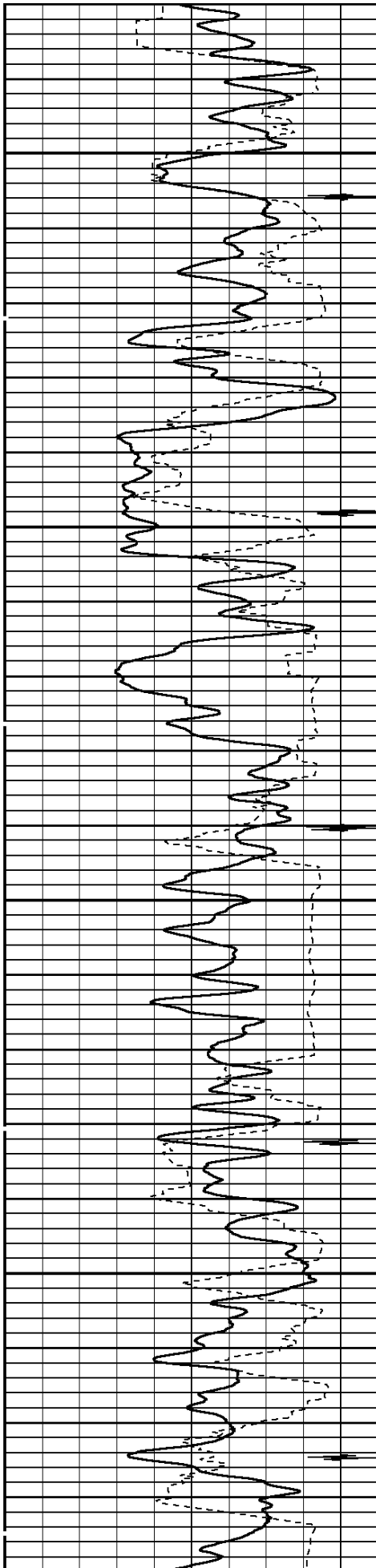




5400

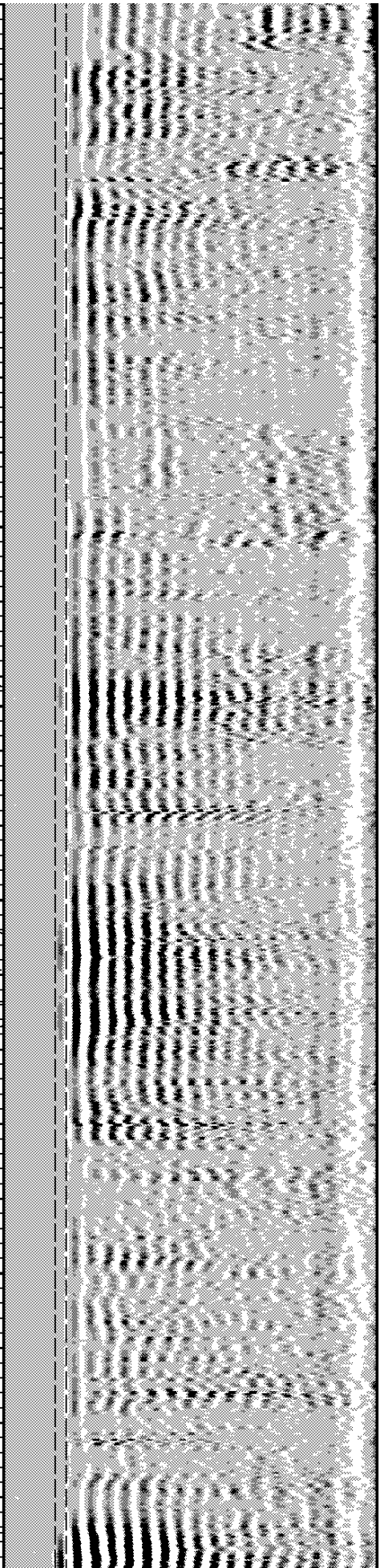
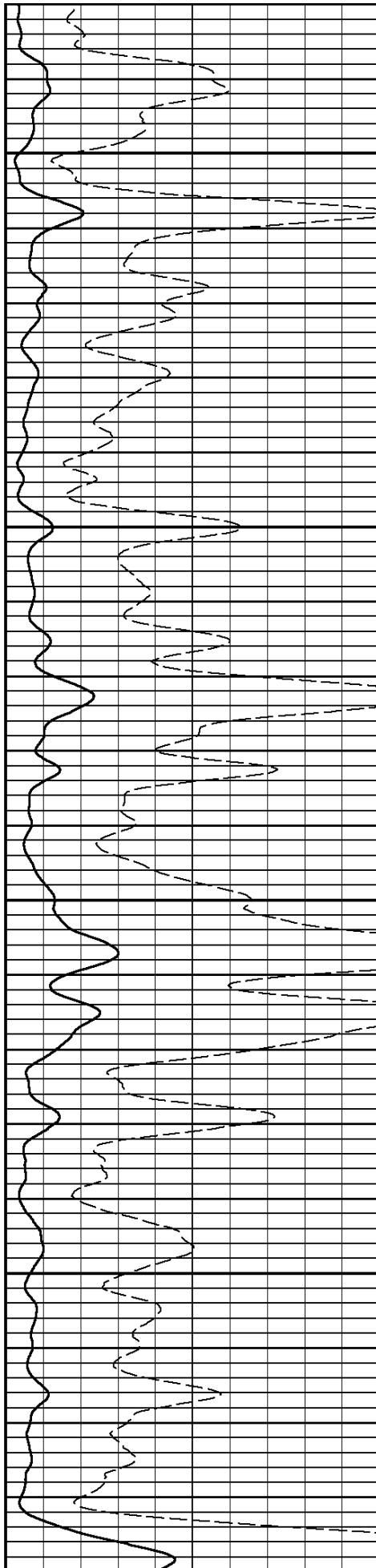
5500

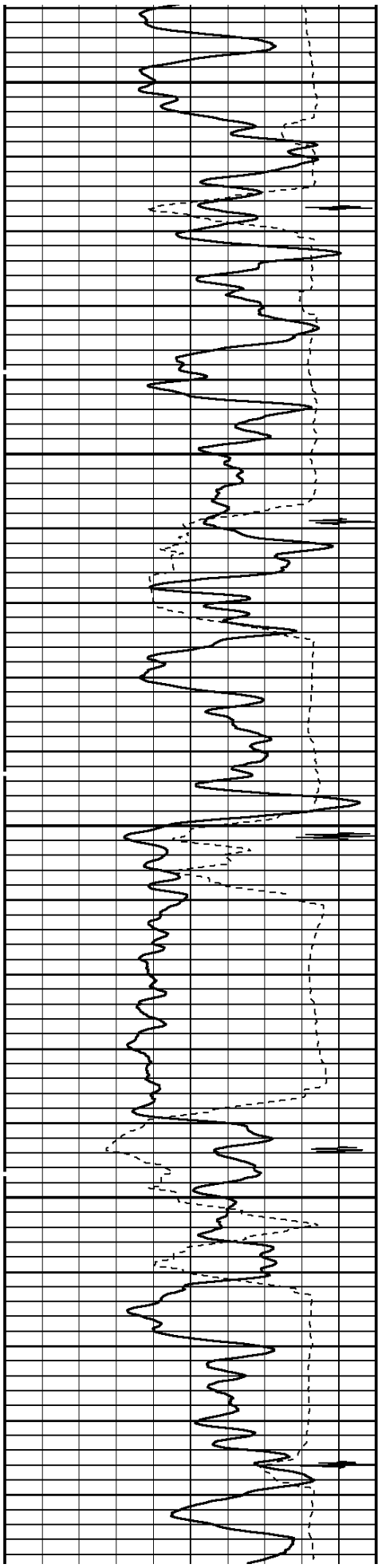




5600

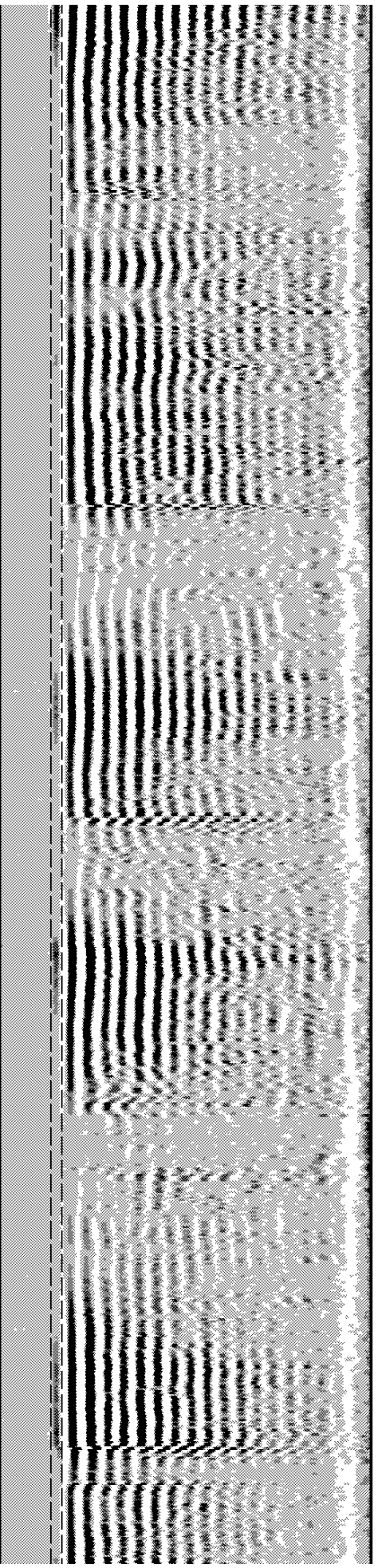
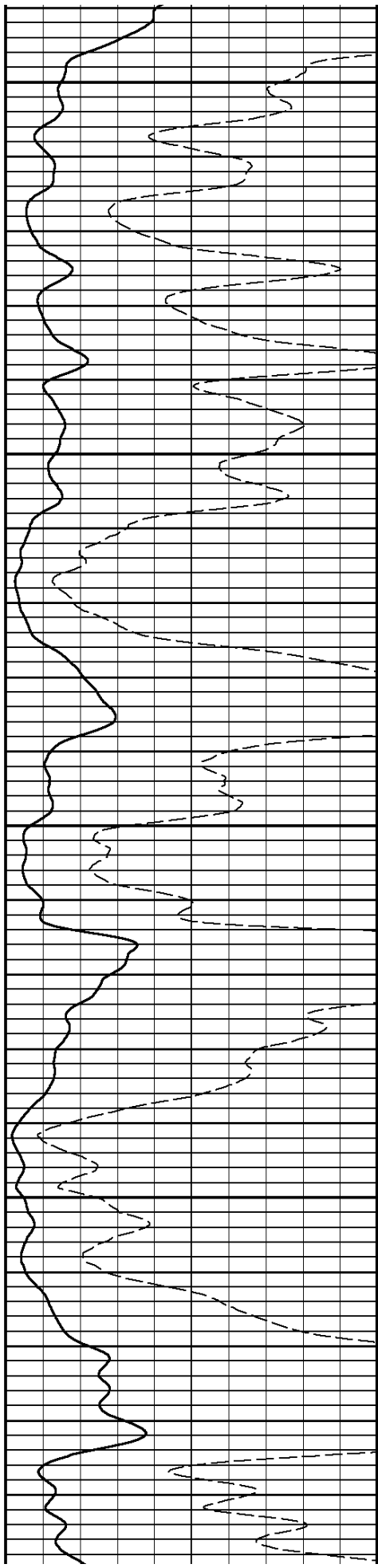
5700

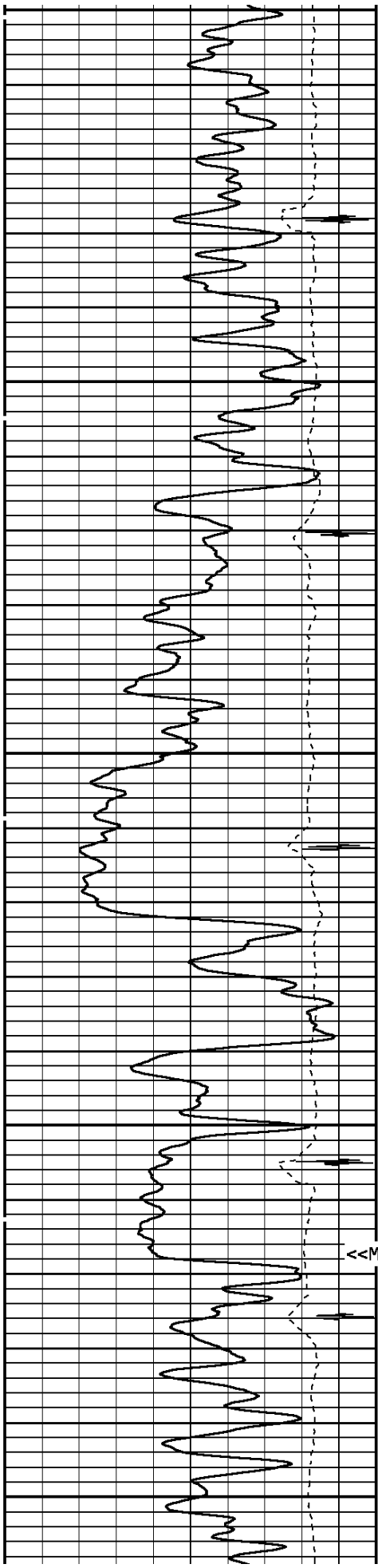




5800

5900

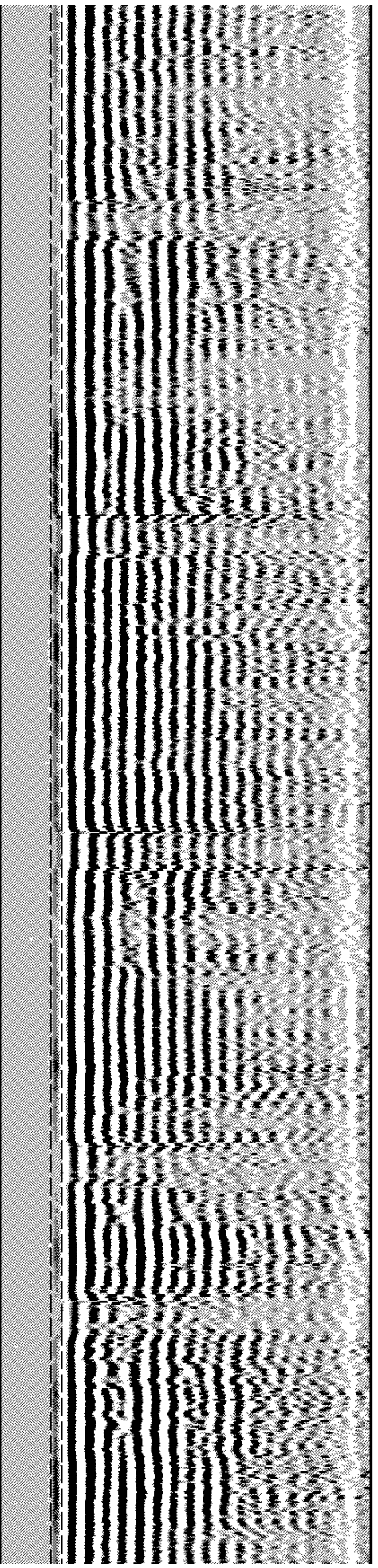
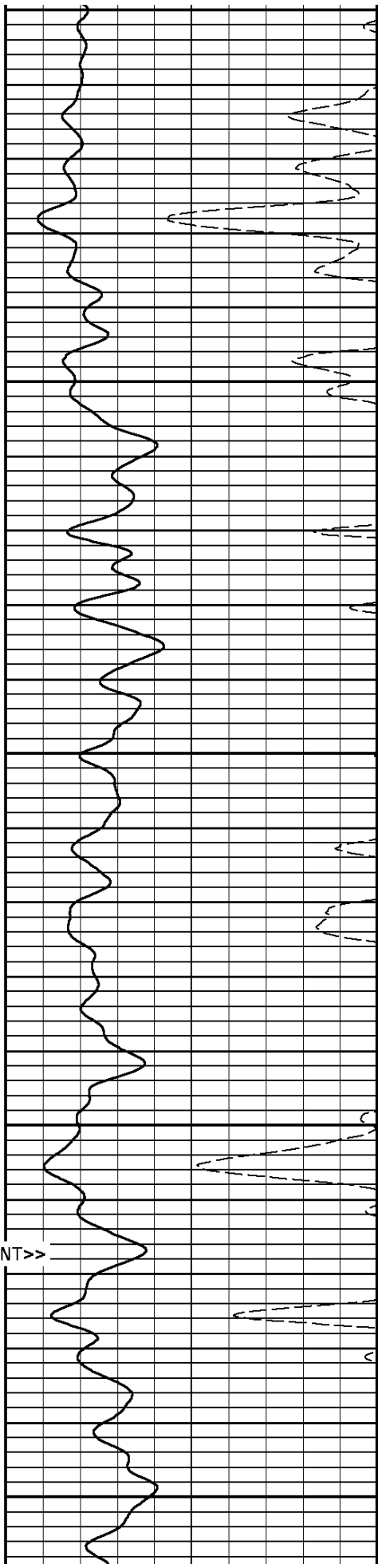


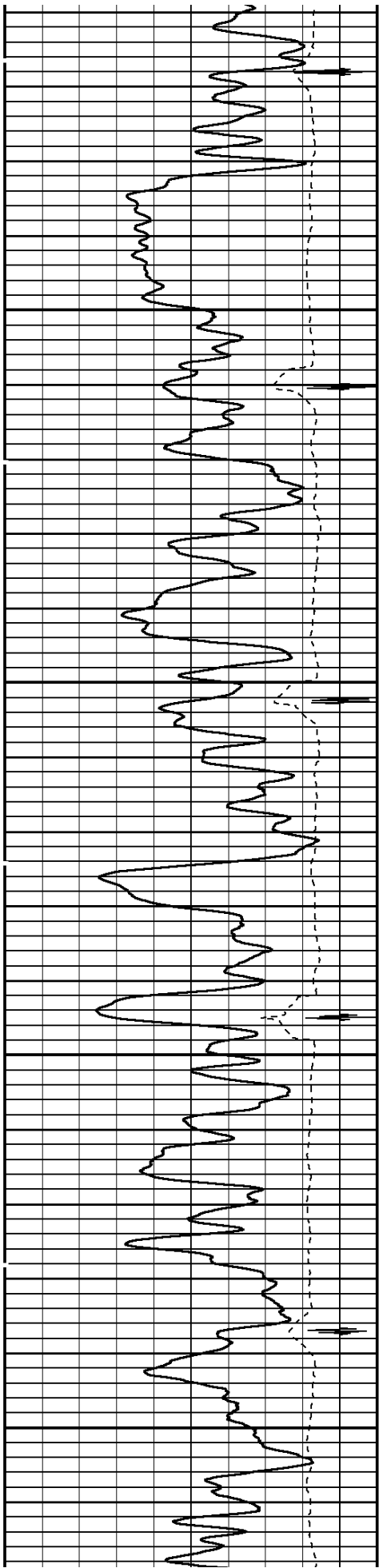


6000

6100

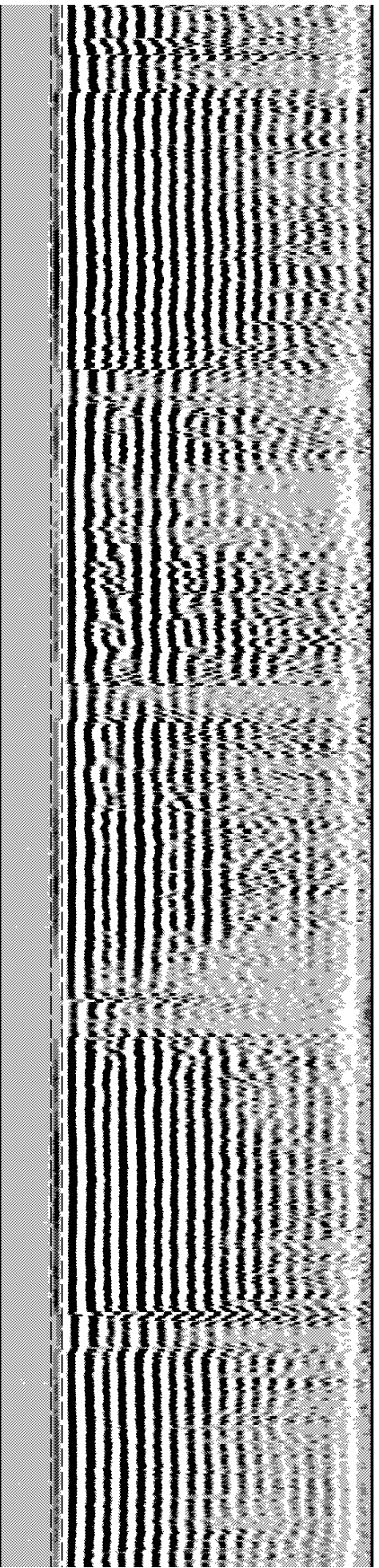
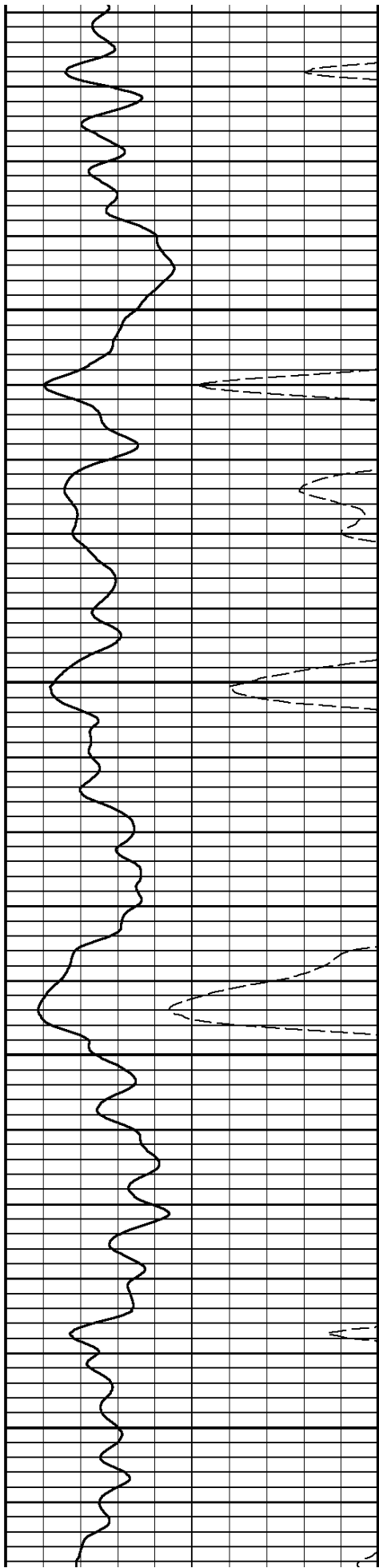
<<MARKER JOINT>>

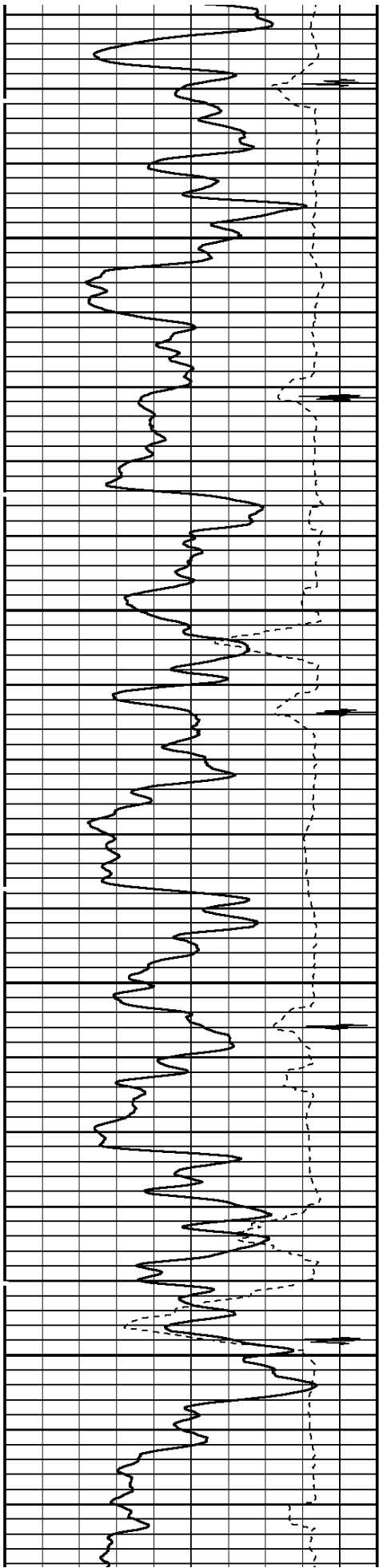




6200

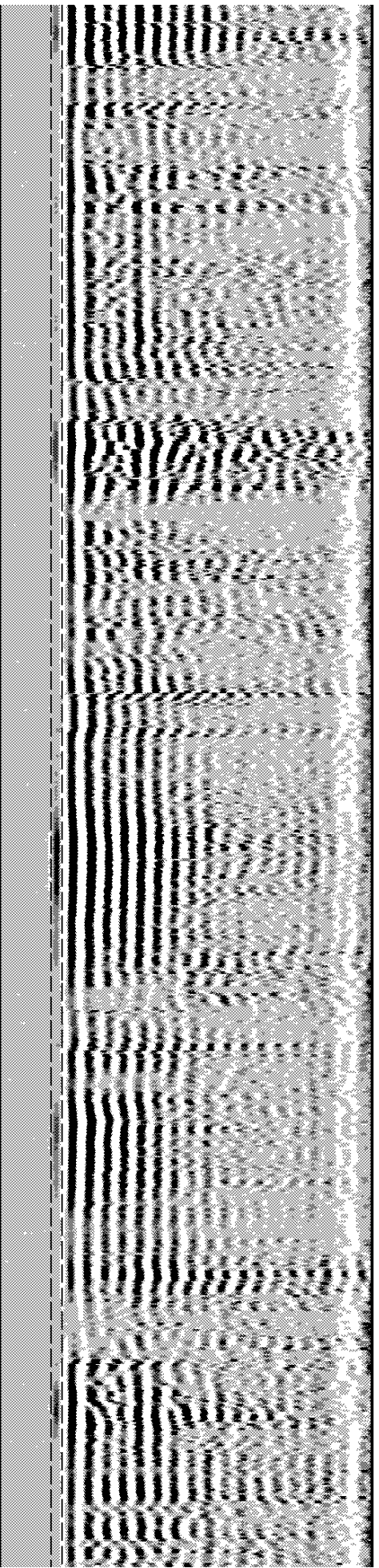
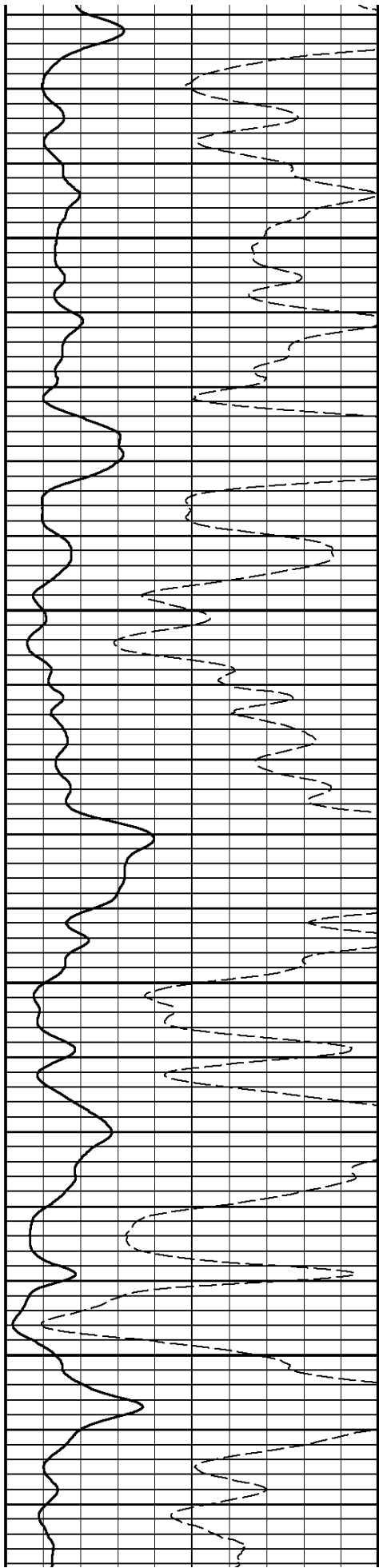
6300

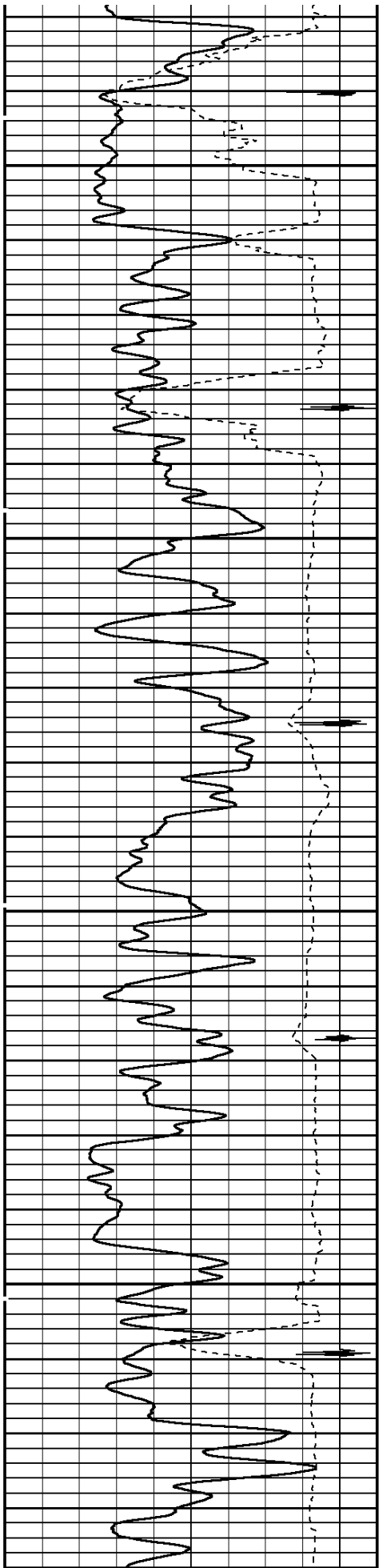




6400

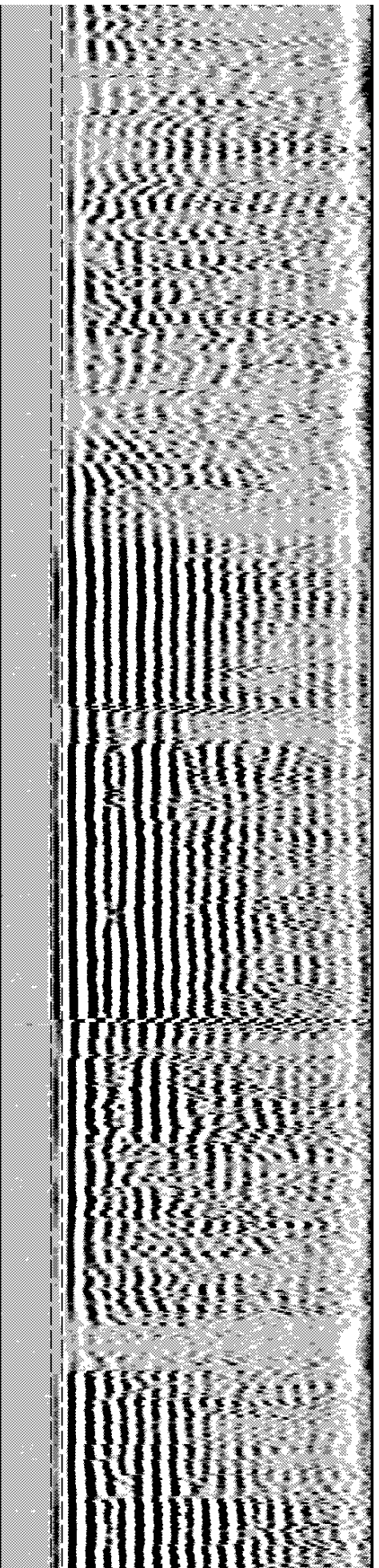
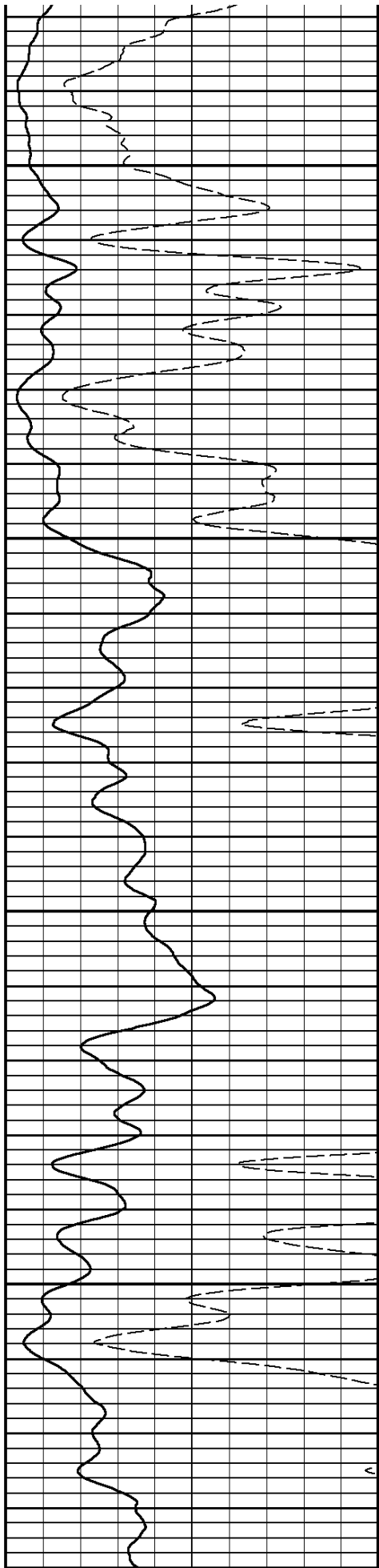
6500

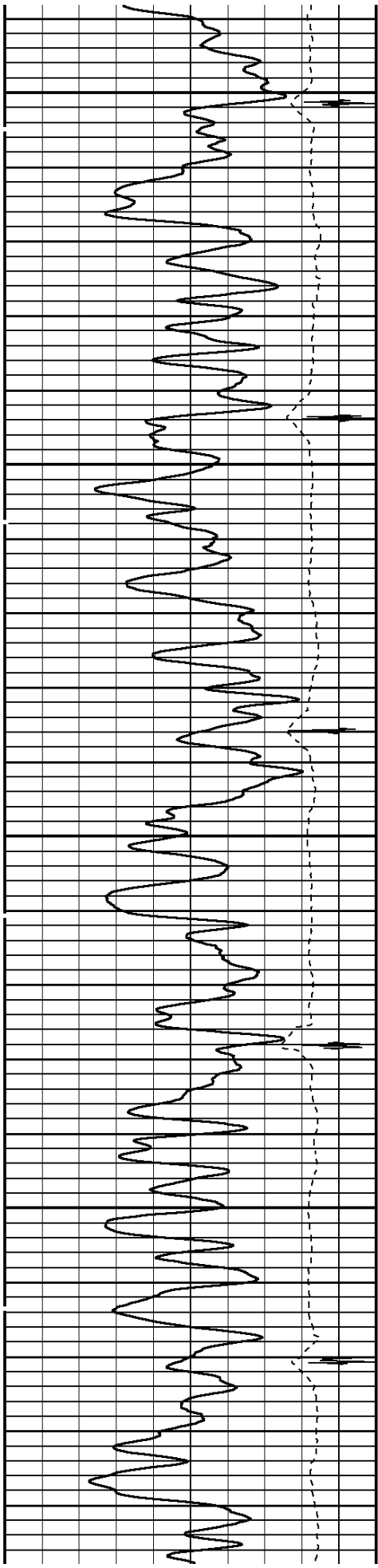




6600

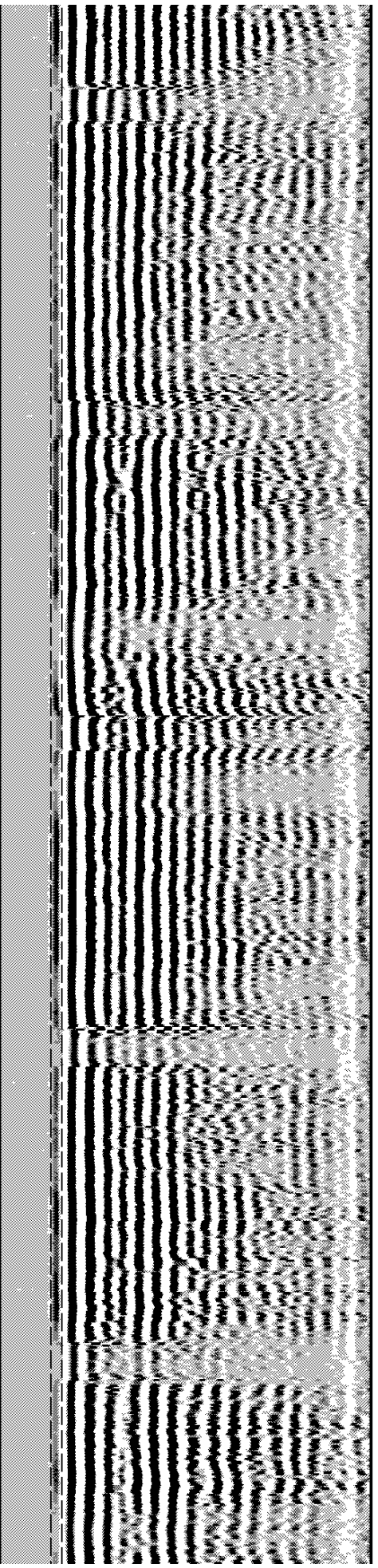
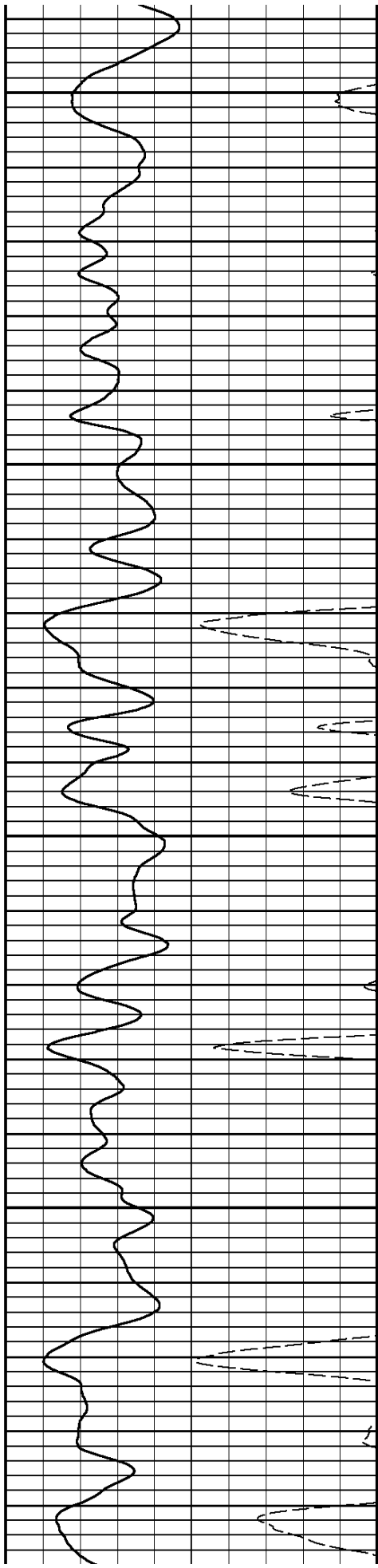
6700

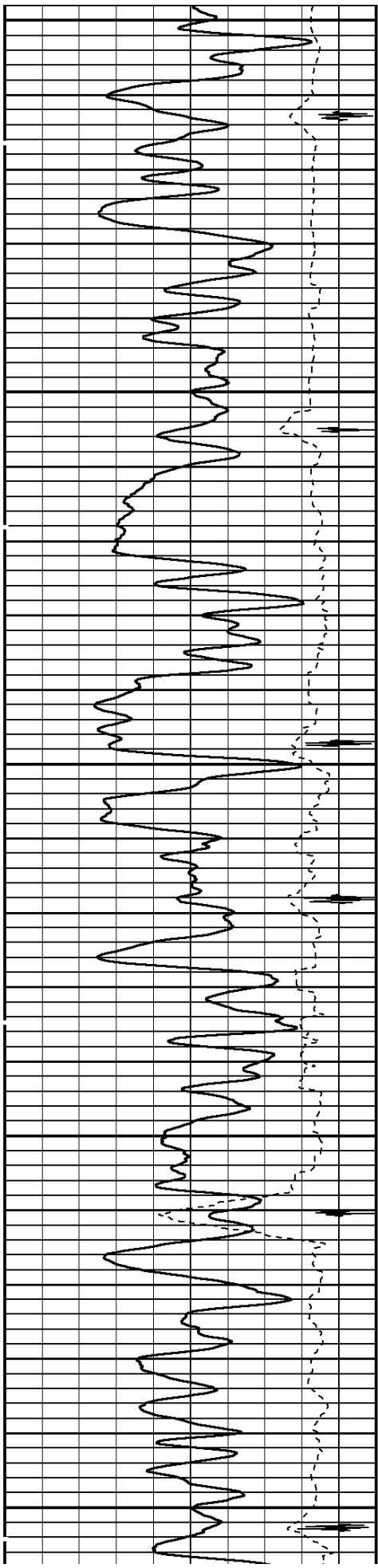




6800

6900

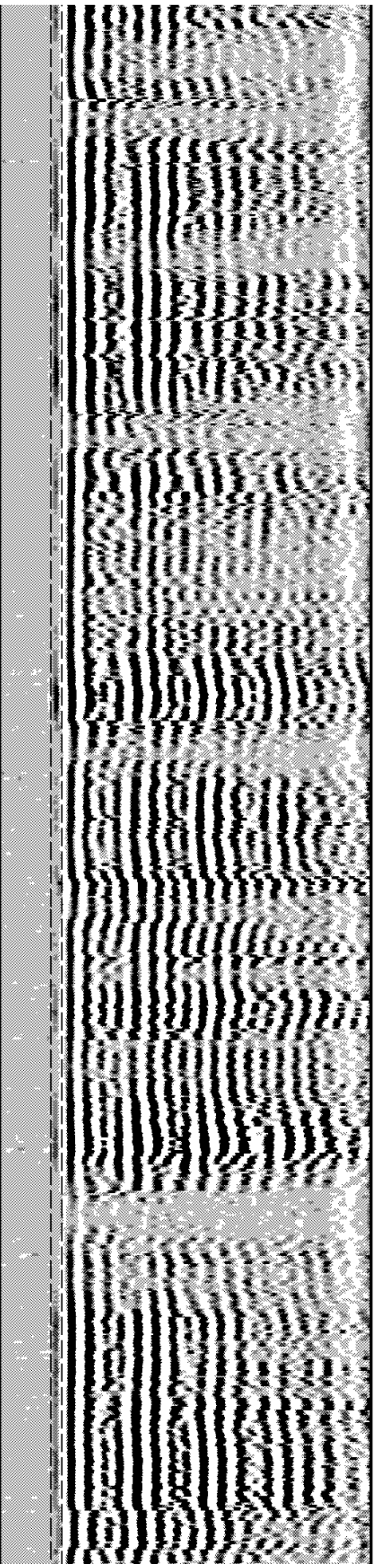
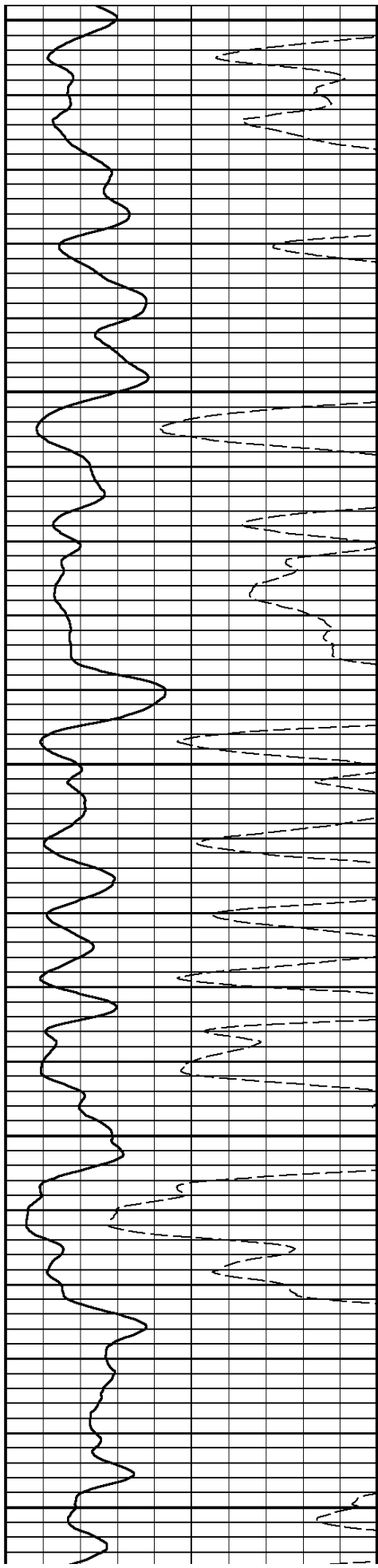


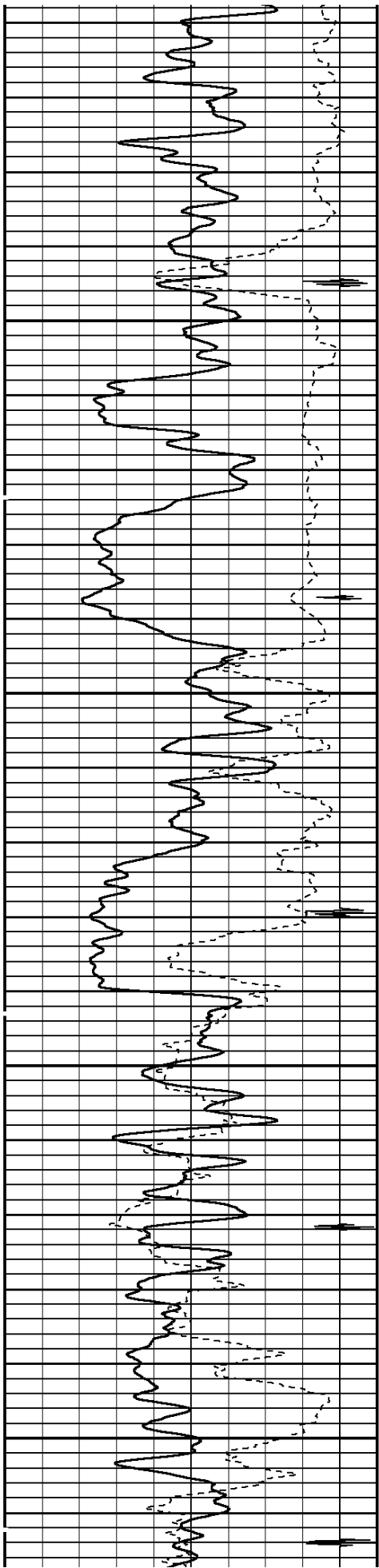


7000

7100

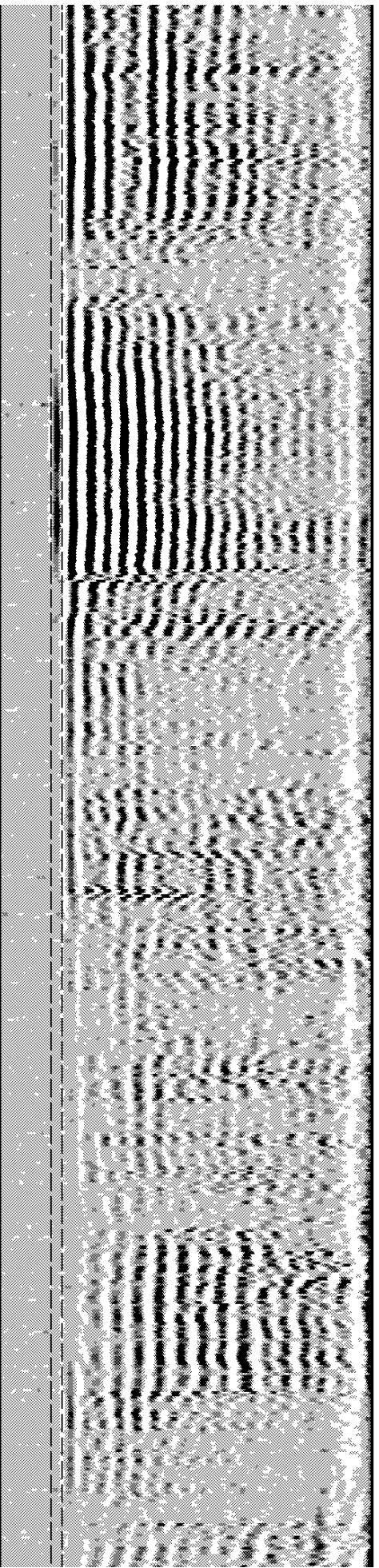
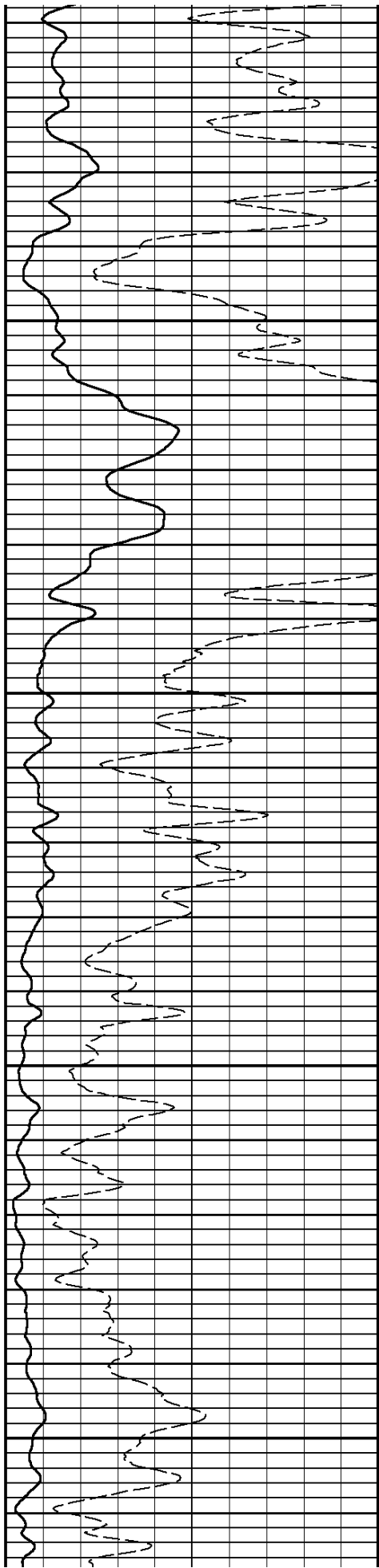
7200

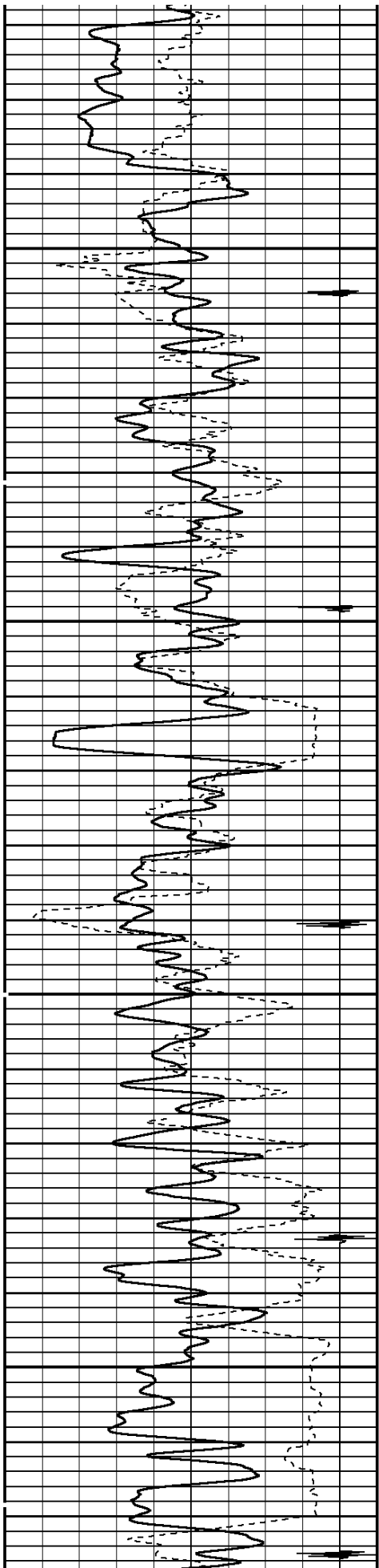




7300

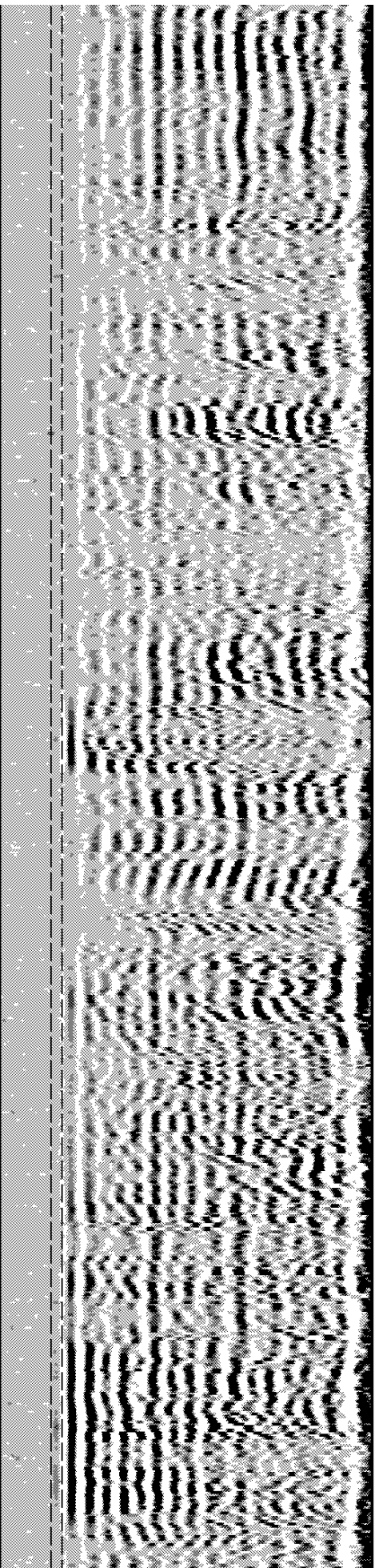
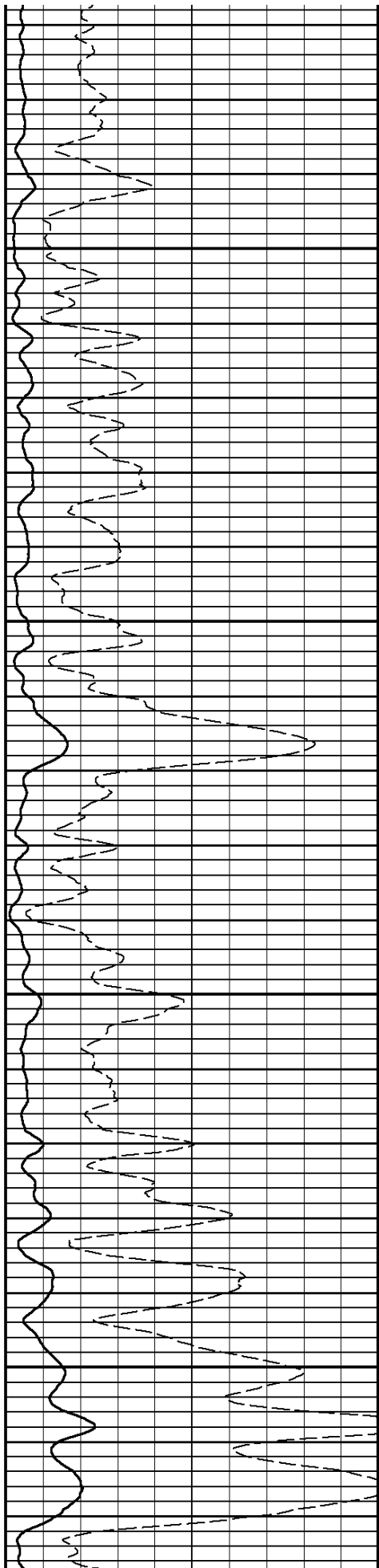
7400

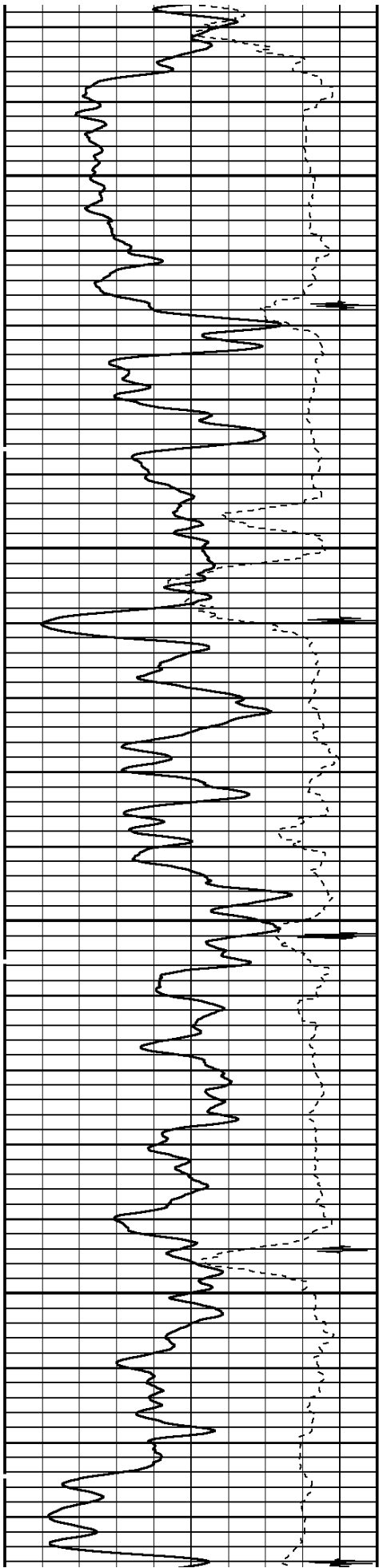




7500

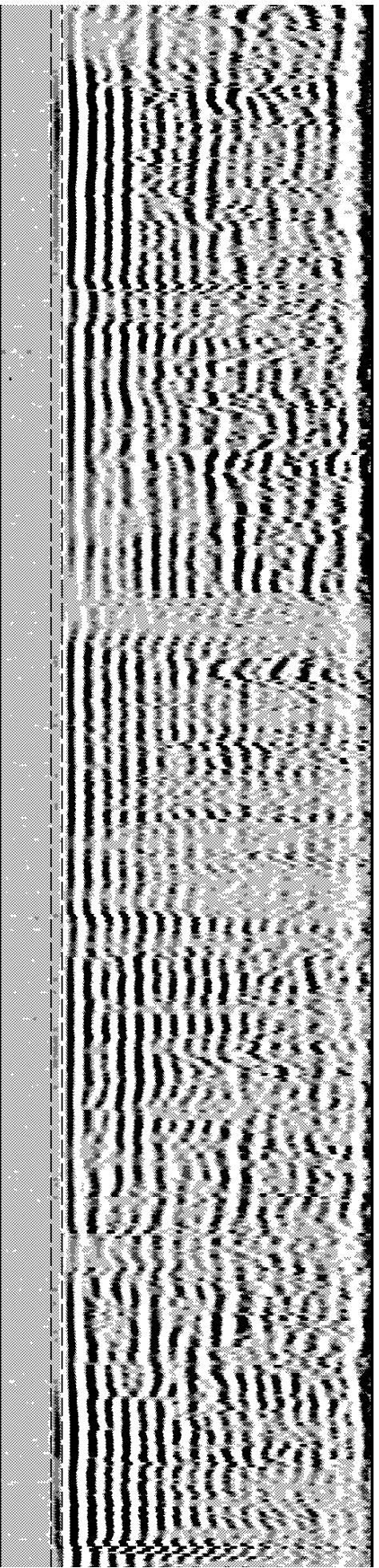
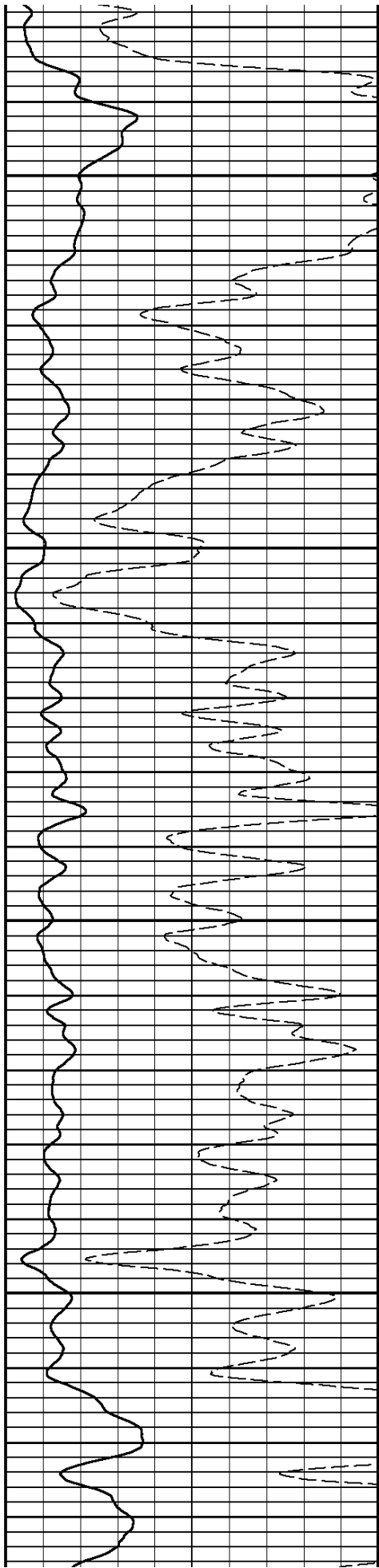
7600

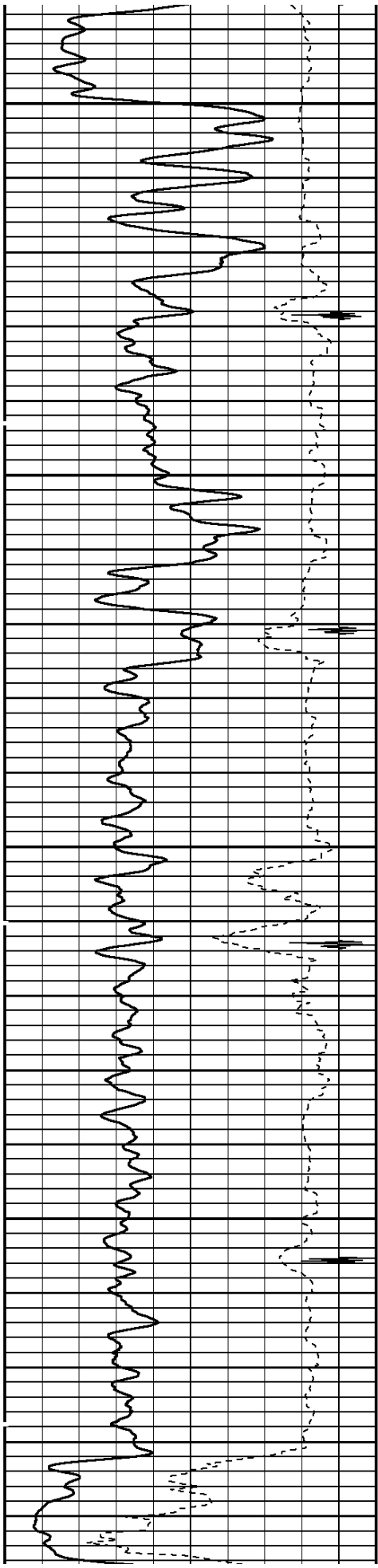




7700

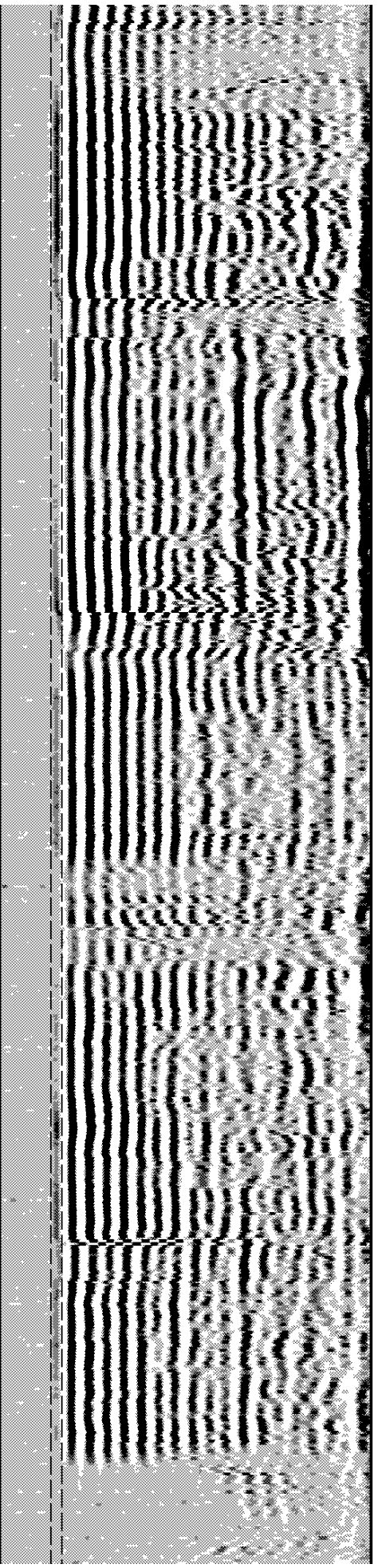
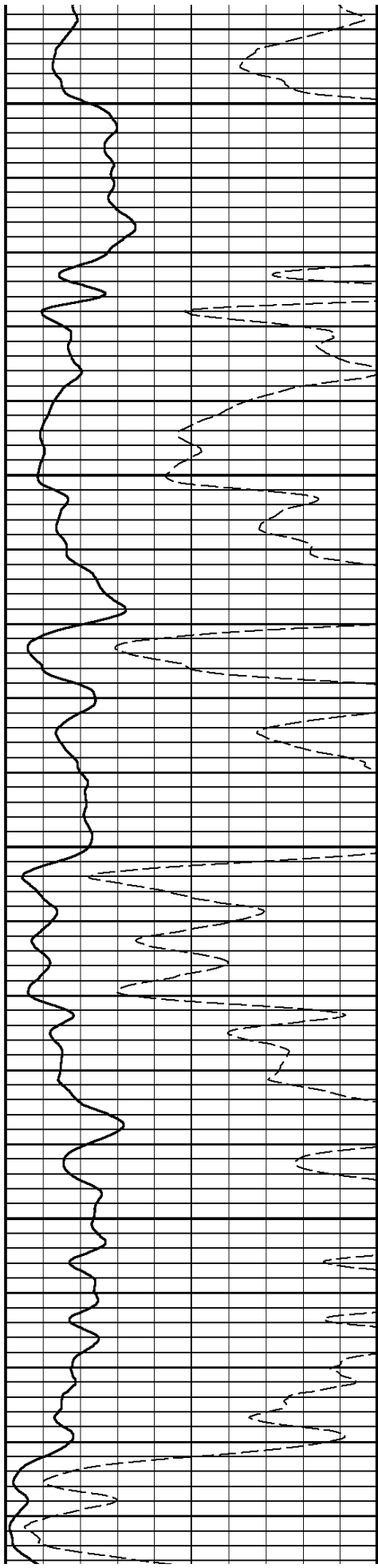
7800

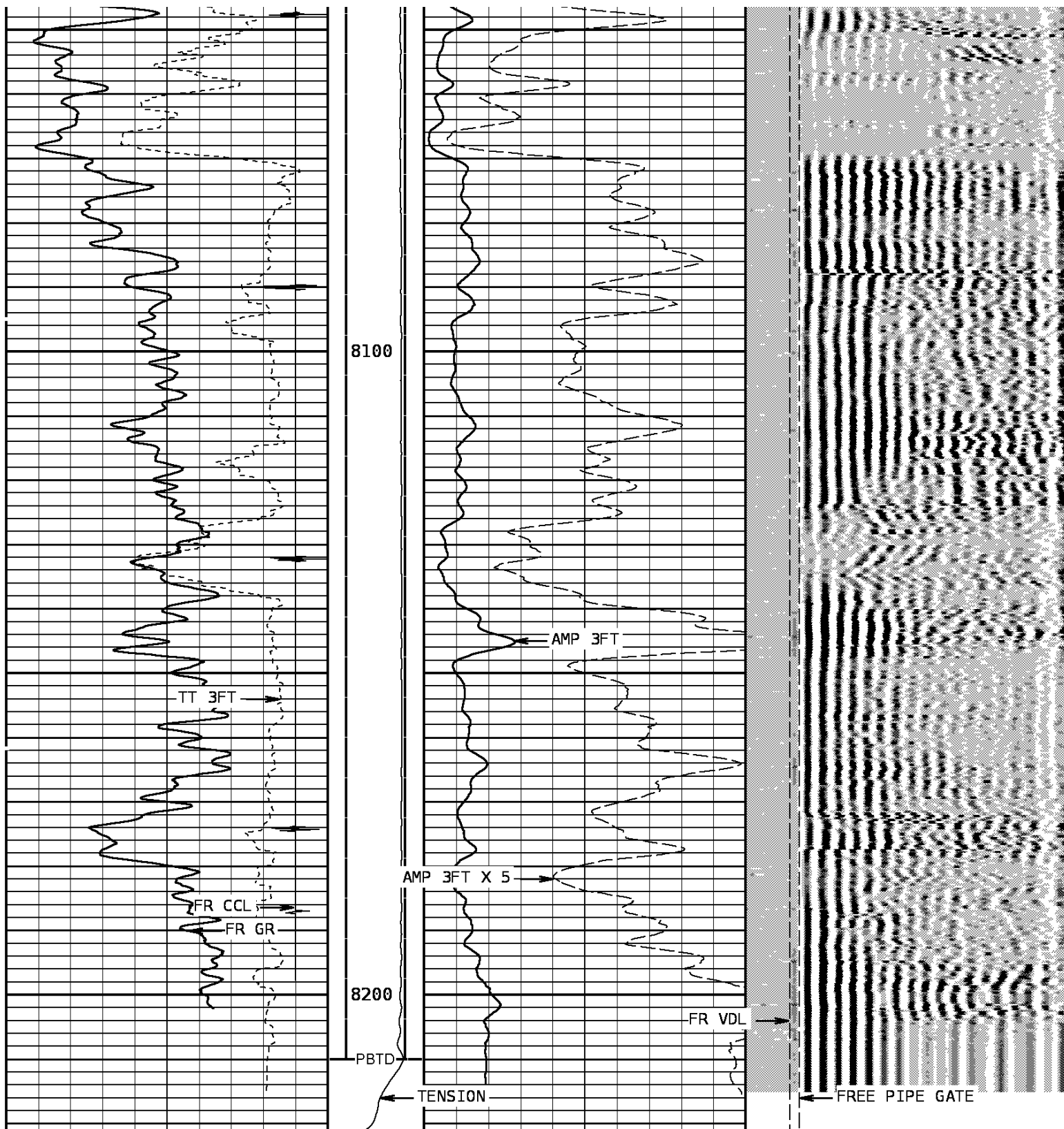




7900

8000





TRAVEL TIME 3FT			TENSION		AMPLITUDE 3FT		VARIABLE DENSITY 5FT			
310	Microseconds	210			0	2200	0	Millivolts	100	200
GAMMA RAY					AMPLITUDE 3FT X5		FREE PIPE GATE			
0	API	150			0	Millivolts	20	200	Microseconds	1200
COLLAR LOCATOR							FREE PIPE GATE			
0000	Millivolts	000					200	Microseconds	1200	

-9000	MILLIVOLTS	990	200	MICROSECONDS	1200
-------	------------	-----	-----	--------------	------

START DEPTH: 8221.5 DIRECTION: UP DATE: 12/06/2007 TIME: 09:50 MODE: ORIGINAL

142233 SBTMAIN

MAIN PASS

DEPTH SCALE: 5":100'

VERSION: **70914123R"**

SYSTEM CONSTANTS

NAME	DESCRIPTION	VALUE	UNITS
CSIZ	Casing Size	4.500	Inches
CWEI	Casing Weight	11.60	Pounds/Foot
AMNS	Min Ampl 100% Bond	1	Millivolts
AMXS	Max Ampl 0% Bond	81	Millivolts
CCL0	Ccl Offset	0	
CCS	Cement Cmpr Strength	1200.0	PSI
CVEL	Casing Velocity	56.5	Microsec/Foot
DTF	DT Fluid	200.0	Microsec/Foot
MATT	Maximum Attenuation	12.00	Decibels/Foot
SWAN	Sheave Wheel Angle	0.00	Degrees
TTC	TT Correction	0	Microseconds
TTFE	Fast Formation TT	43.5	Microsec/Foot

DEPTH SCALE: 5":100'

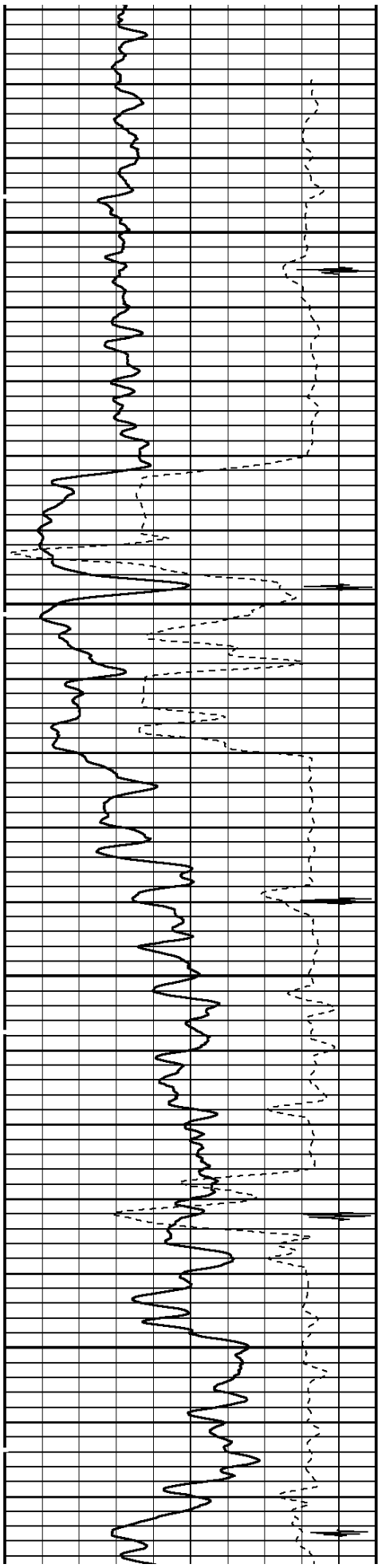
VERSION: 70914123R"

REPEAT PASS

142233 SBTREPEAT

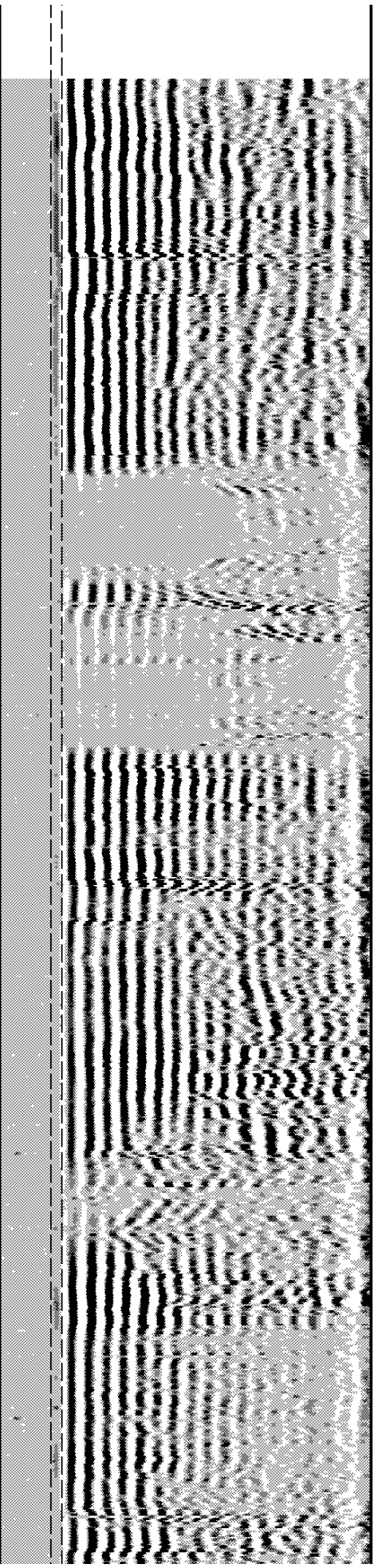
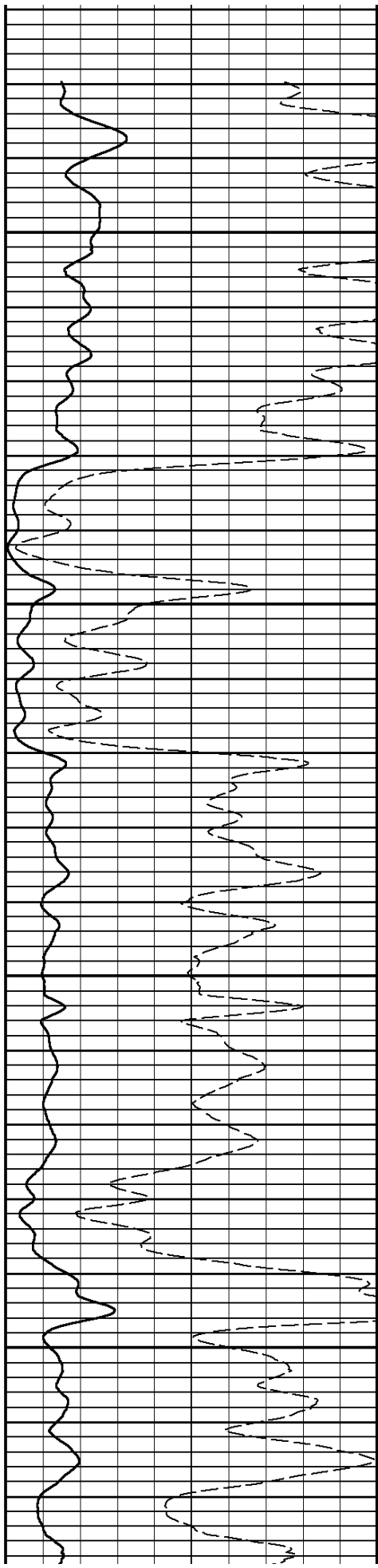
FINISH DEPTH: **7985.6** Feet DIRECTION: **UP** DATE: **12/06/2007** TIME: **10:03** MODE: **ORIGINAL**

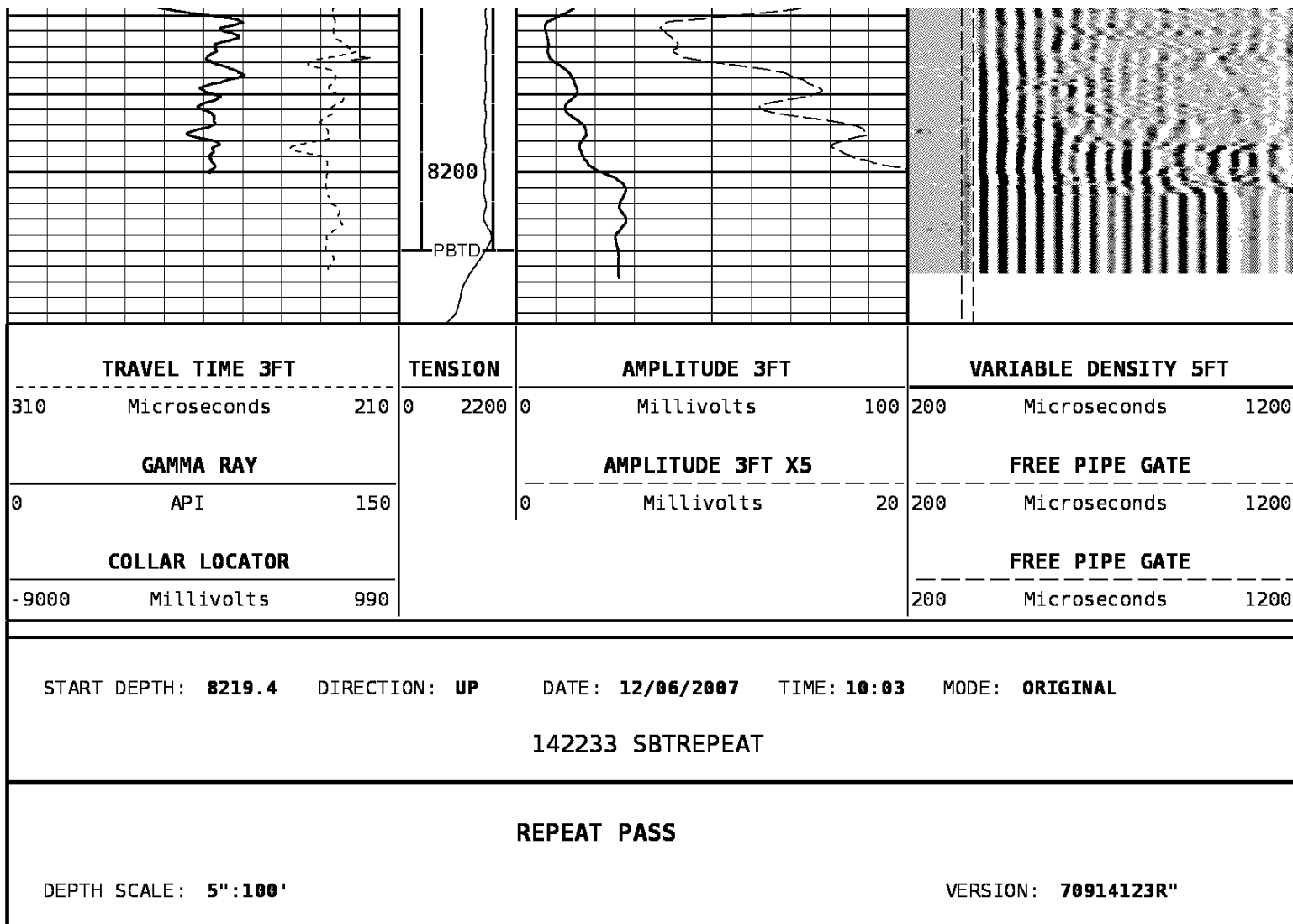
[illegible]



8000

8100





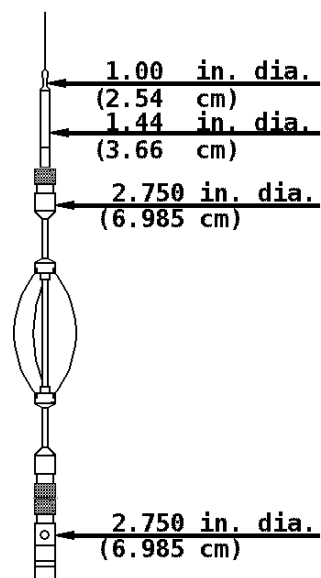
1 to 17 Adaptor Head

Weight 2.2 LB.
Length 2.54
Max. Diameter 1.44 IN.

Total Stack Weight 223.0 LBS. in air
Total Stack Length 27.83 FT.

Slim Hole Centralizer

Weight 15 lbs
Length 2.49 FT.
Max. Diameter 2.750 IN.



Collar Locator

Weight 39.8 LBS.
Length 3.40 FT.
Max. Diameter 2.75 IN.

Slim Hole Gamma Ray

Weight 39.8 LBS.
Length 4.71 FT.
Max. Diameter 2.750 IN.

Slim Hole Centralizer

Weight 22 LBS.
Length 3.08 FT.
Max. Diameter 2.750 IN.

Sector Bond

Weight 89.2 LBS>
Length 10.32 FT.
Max. Diameter 2.750 IN.

Slim Hole Centralizer

Weight 15.0 LBS.

CCL 23.57 FT.

2.750 in. dia.
(6.985 cm)

GR 19.97 FT.

2.750 in. dia.
(6.985 cm)

2.750 in. dia.
(6.985 cm)

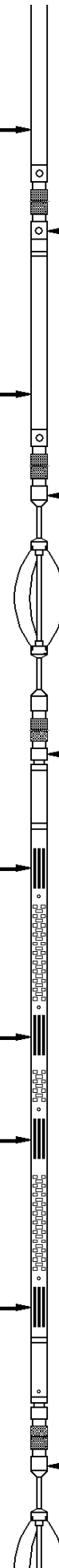
SBT/CBL Tx 8.75 FT.

SBT Rx 7.77 FT.

3' Rx 7.28 FT.

5' Rx 6.28 FT.

2.750 in. dia.
(6.985 cm)



Length 2.82 FT.
Max. Diameter 2.750 IN.



Tool Zero

COMPANY ENCANA OIL & GAS (USA) INC.

WELL SHIDELER 30-14B(E30E)

FIELD MAMM CREEK

COUNTY GARFIELD STATE COLORADO



Weatherford®