



SUPERIOR
Black Lick, Pa.
Mercer, Pa.
Wooster, Oh.
Cleveland, Ok.
Trinidad, Co.

DUAL INDUCTION LOG

Company XTO Energy Inc.
Well Hill Ranch 36-02
Field Purgatoire River
County Las Animas State Colorado

Location: API # : 05 071 09197 00

843' FNL & 1489' FEL

SEC 36 TWP 34S RGE 67W

Permanent Datum Ground Level Elevation 7789'
Log Measured From Ground Level
Drilling Measured From Ground Level

Other Services
CDL
NEUTRON
Elevation
K.B. -----
D.F. -----
G.L. 7789'

Date 3-27-07

Run Number One

Depth Driller 2420'

Depth Logger 2406'

Bottom Logged Interval 2404'

Top Log Interval Surface Casing

Casing Driller 8 5/8" @ 479'

Casing Logger 482'

Bit Size 7 7/8"

Type Fluid in Hole Water

Density / Viscosity ///

pH / Fluid Loss ///

Source of Sample ///

Rm @ Meas. Temp ///

Rmf @ Meas. Temp ///

Rmc @ Meas. Temp ///

Source of Rmf / Rmc ///

Rm @ BHT ///

Time Circulation Stopped 4:15 A.M.

Time Logger on Bottom 8:30 A.M.

Maximum Recorded Temperature 102 DEG F

Equipment Number T0697

Location Trinidad

Recorded By M. Norton

Witnessed By Mr. Don Johnson

>>> Fold Here >>>

All interpretations are opinions based on inferences from electrical or other measurements and we cannot and do not guarantee the accuracy or correctness of any interpretation, and we shall not, except in the case of gross or willful negligence on our part, be liable or responsible for any loss, costs, damages, or expenses incurred or sustained by anyone resulting from any interpretation made by any of our officers, agents or employees. These interpretations are also subject to our general terms and conditions set out in our current Price Schedule.

Comments

Well Directions:

Lorencito to XTO hill, go up hill three miles location on right side of road.

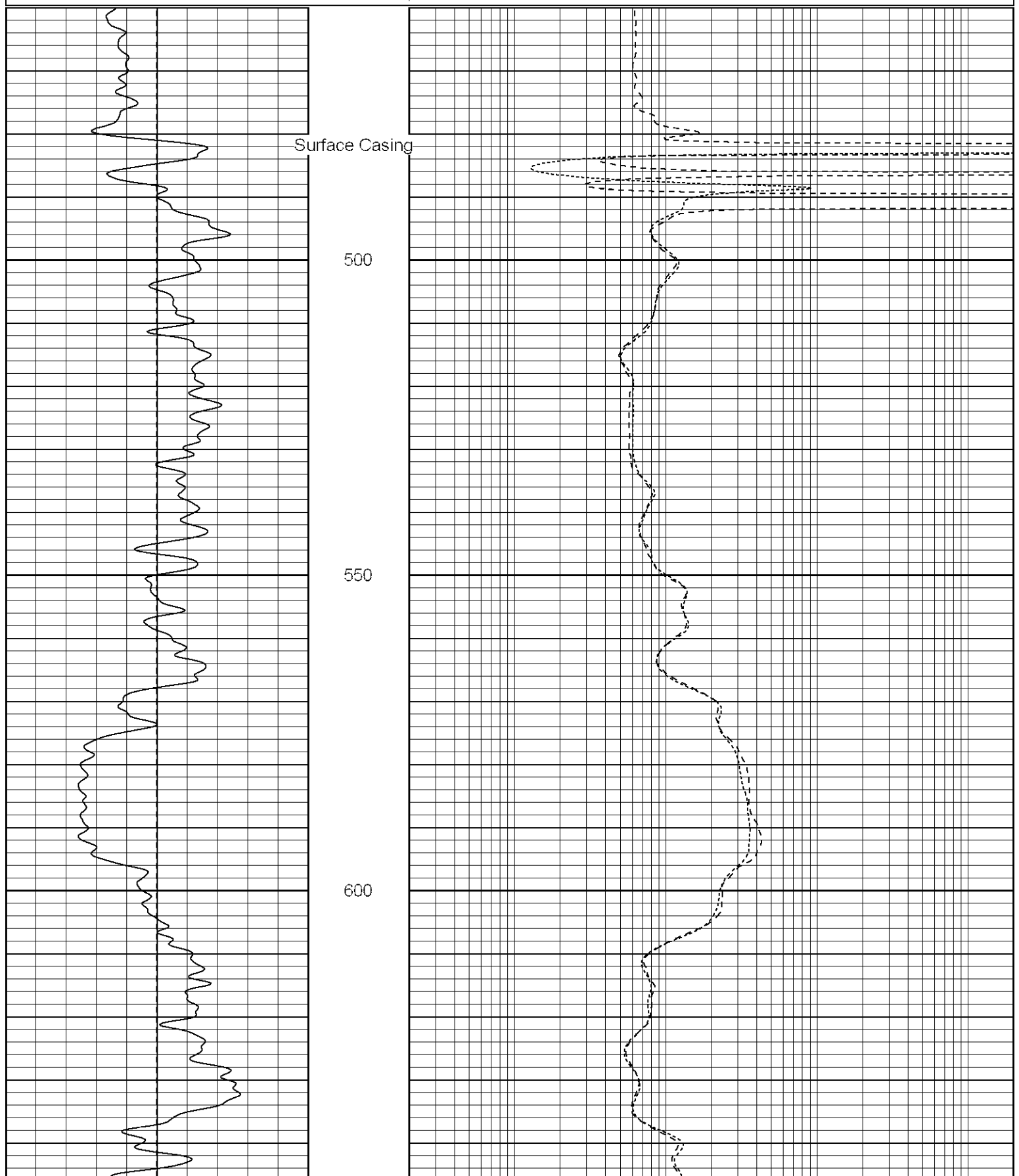


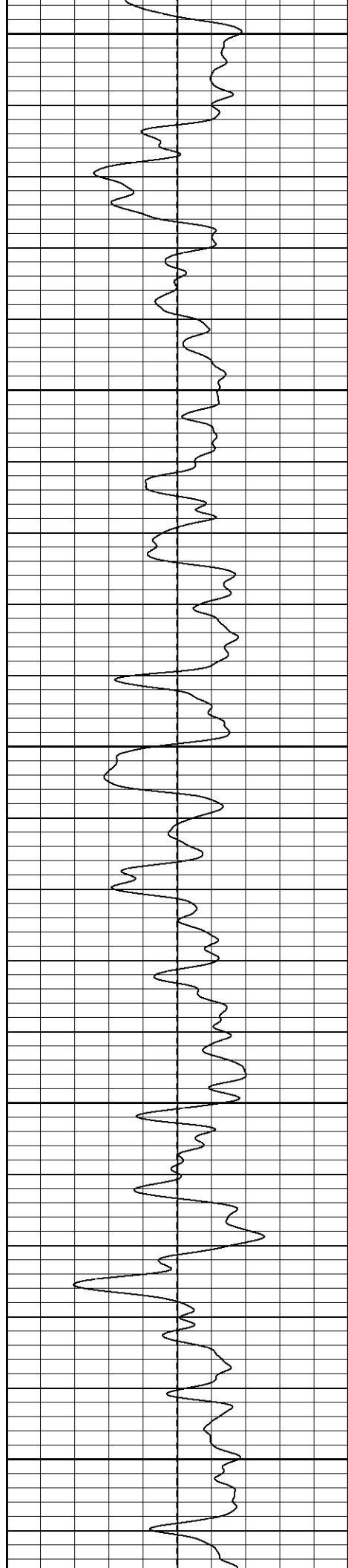
SUPERIOR
Black Lick, Pa.
Mercer, Pa.
Wooster, Oh.
Cleveland, Ok.
Trinidad, Co.

Main Pass

Database File: xtohr3602.db
Dataset Pathname: pass2.1
Presentation Format: dil
Dataset Creation: Tue Mar 27 10:42:40 2007 by Calc Open-Cased 061129
Charted by: Depth in Feet scaled 1:240

0	GR (GAPI)	200	0.2	RILM (Ohm-m)	2000
-100	SP (mV)	100	0.2	RILD (Ohm-m)	2000
			0.2	RLL3 (Ohm-m)	2000





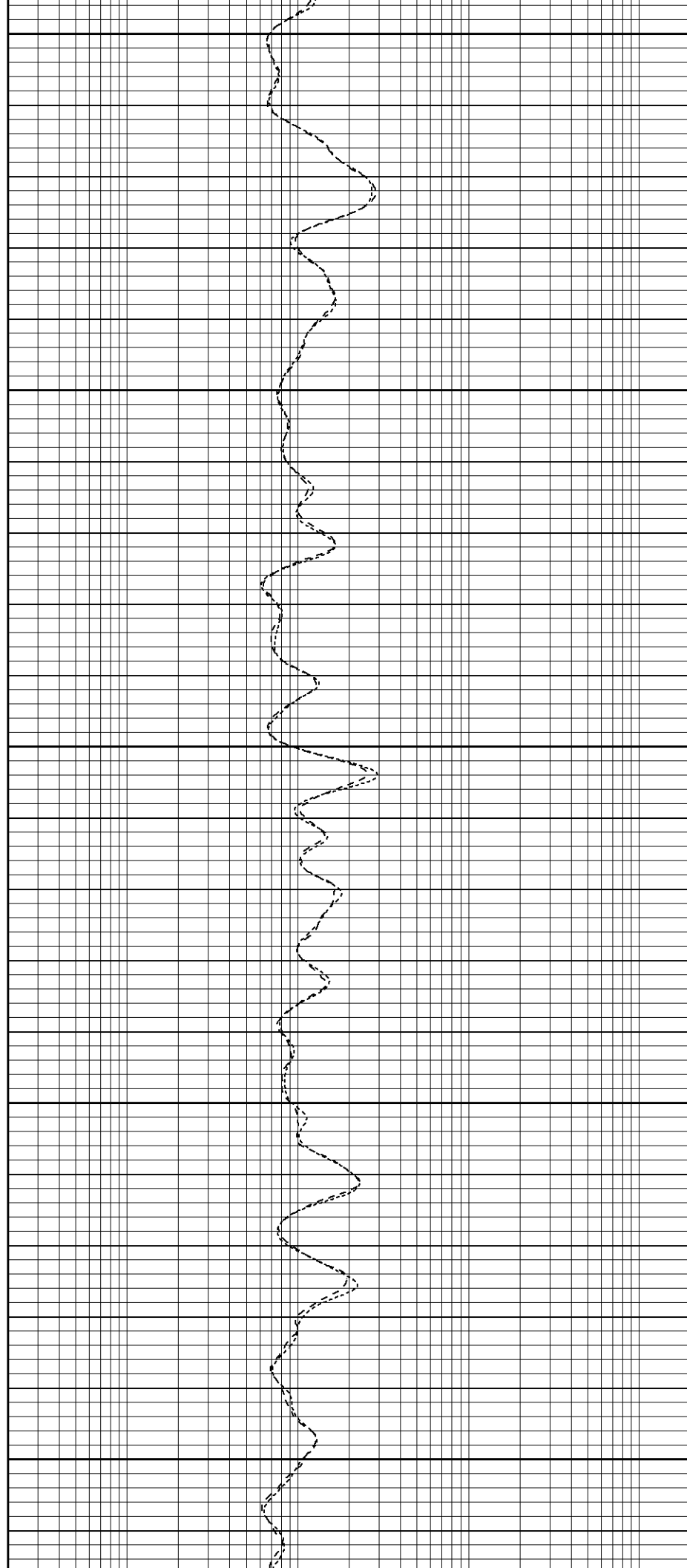
650

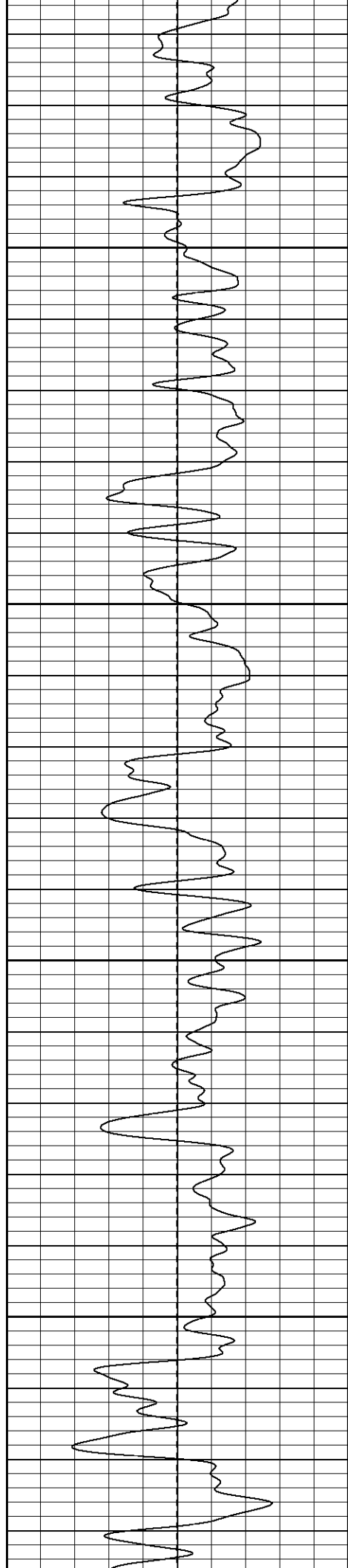
700

750

800

850



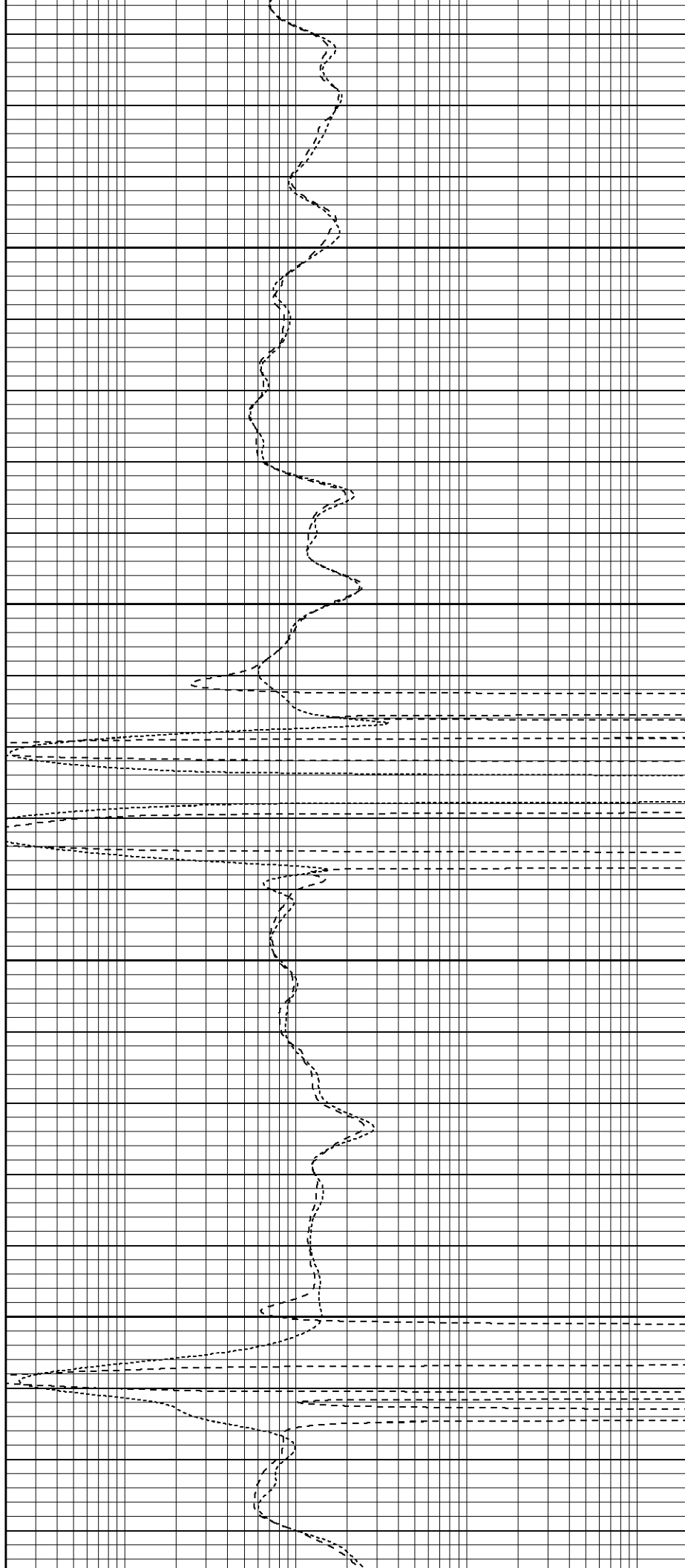


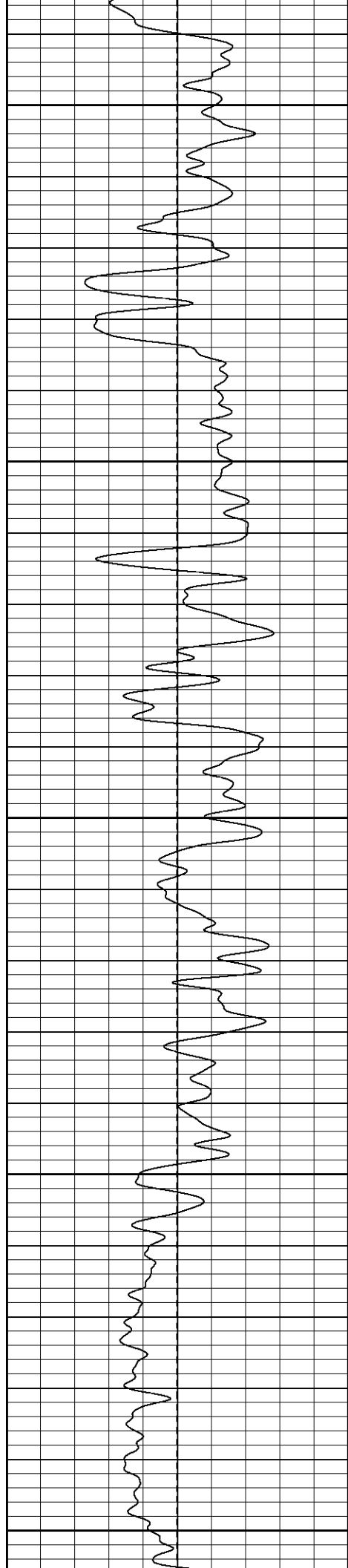
900

950

1000

1050





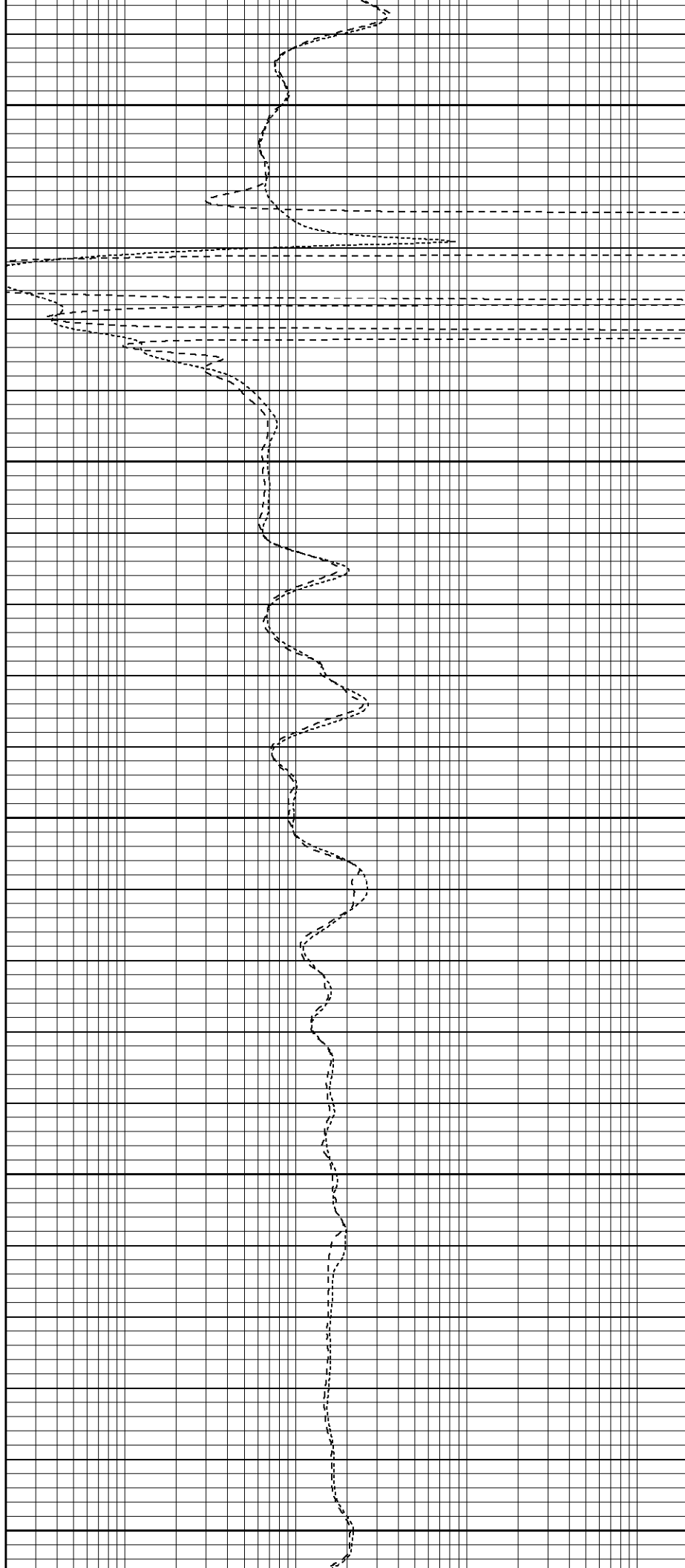
1100

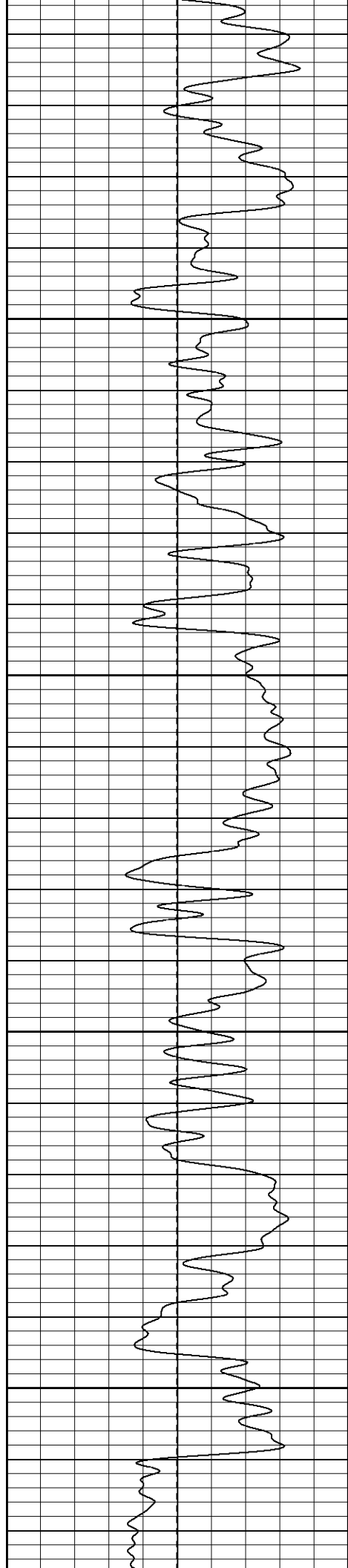
1150

1200

1250

1300



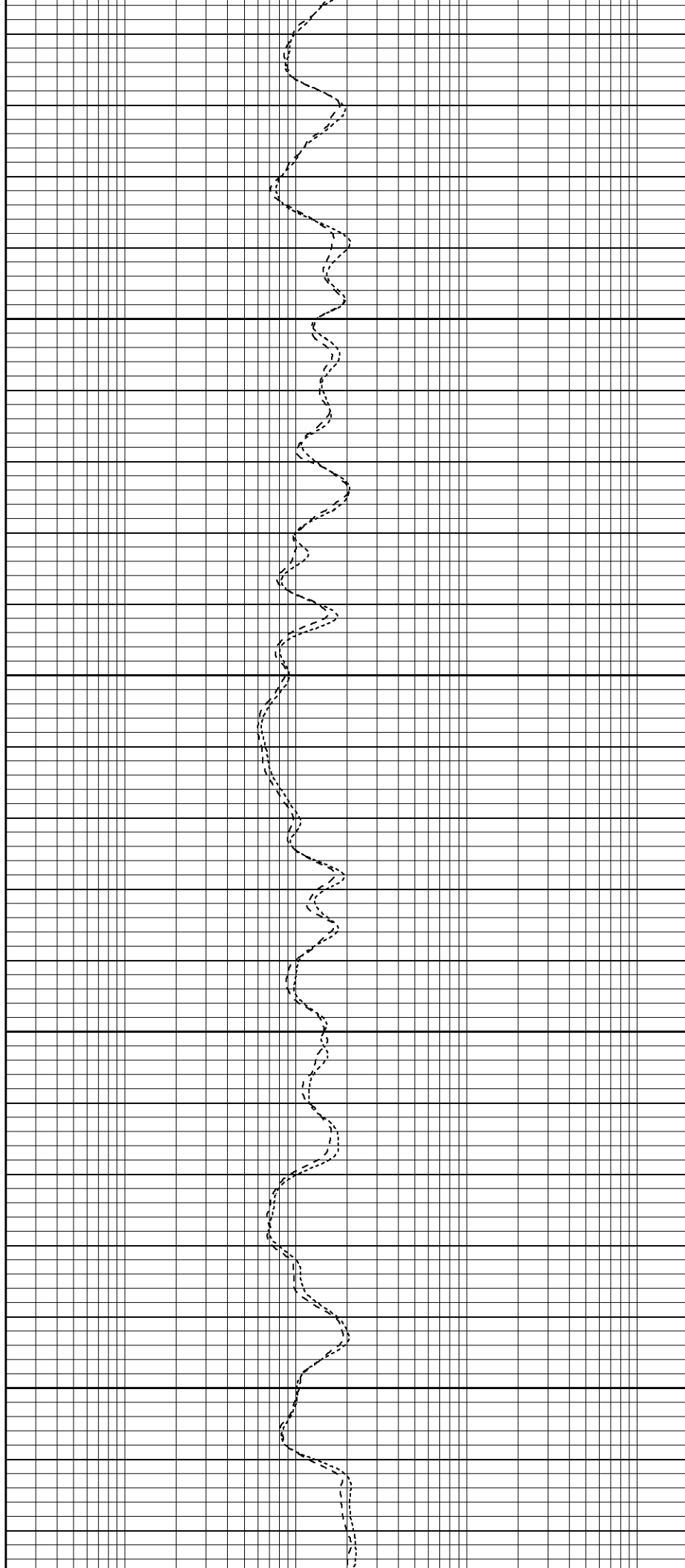


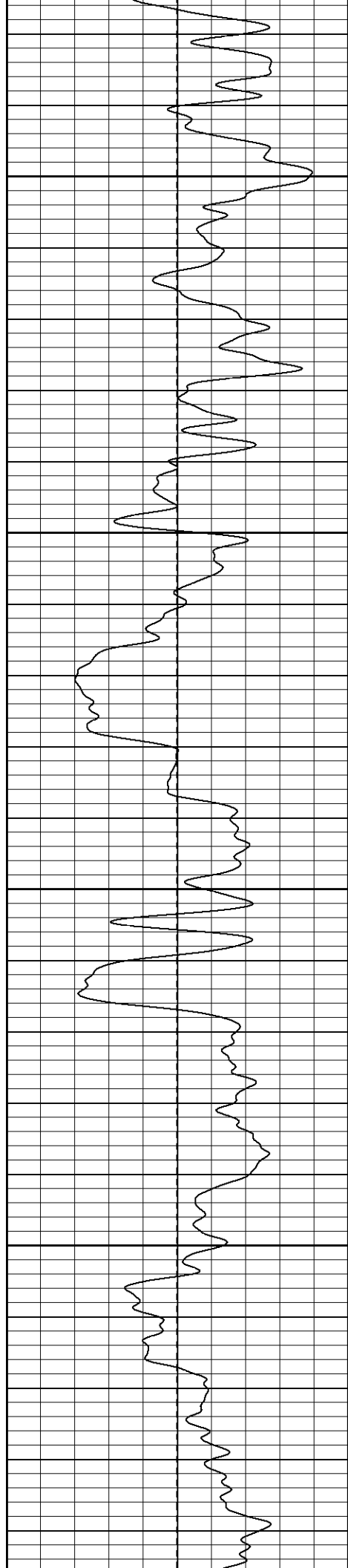
1350

1400

1450

1500



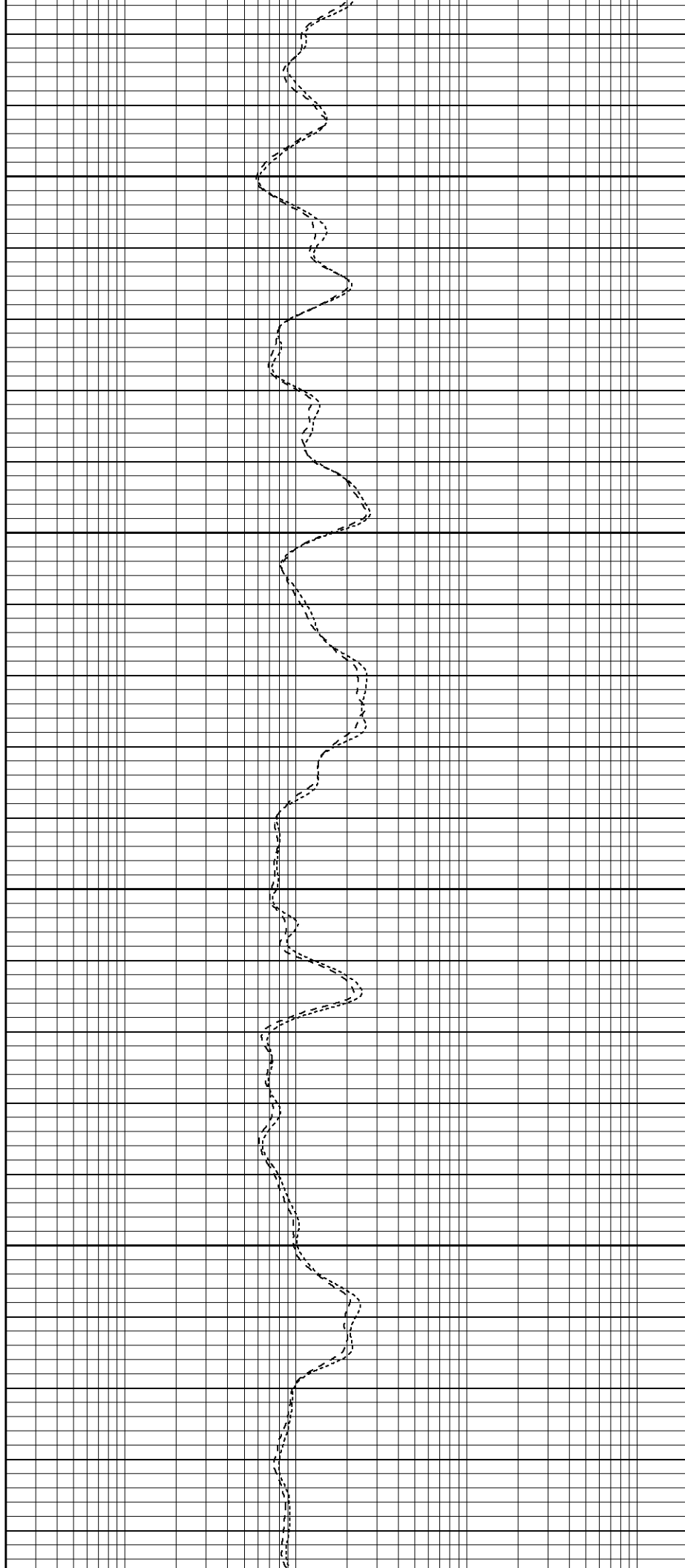


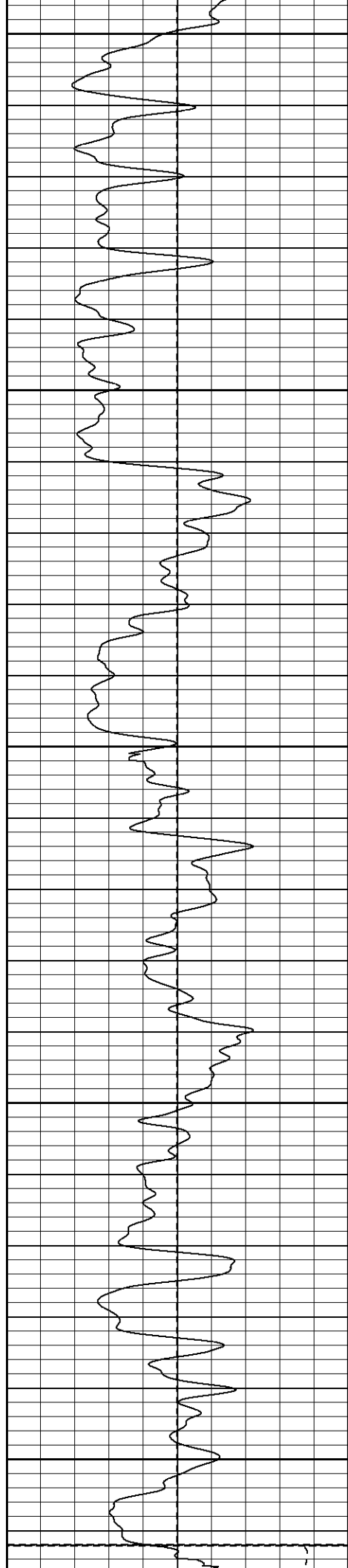
1550

1600

1650

1700





1750

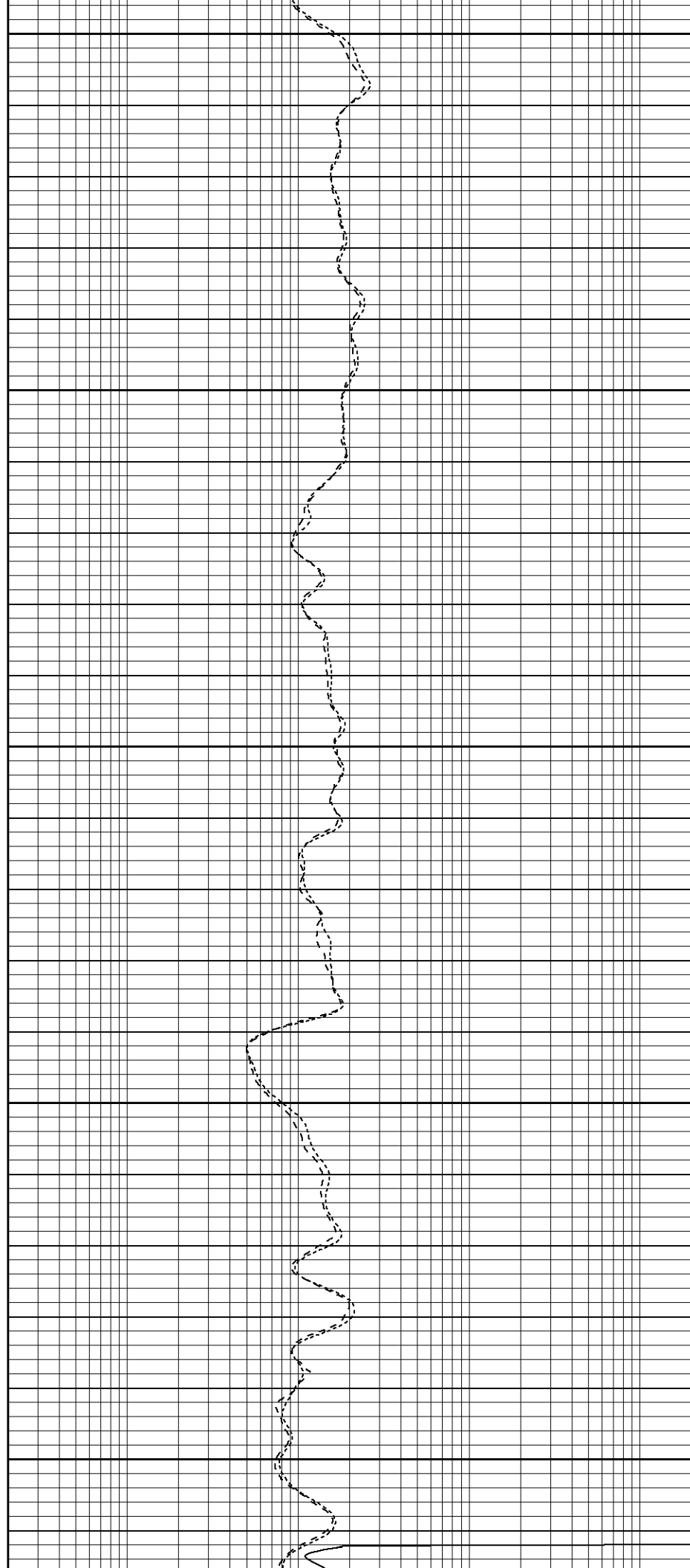
1800

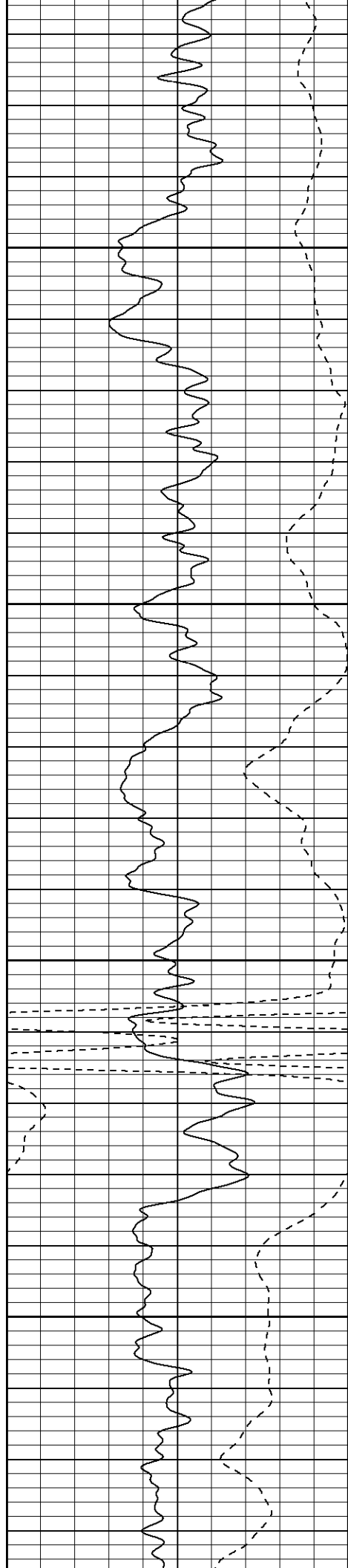
1850

1900

1950

Fluid Level



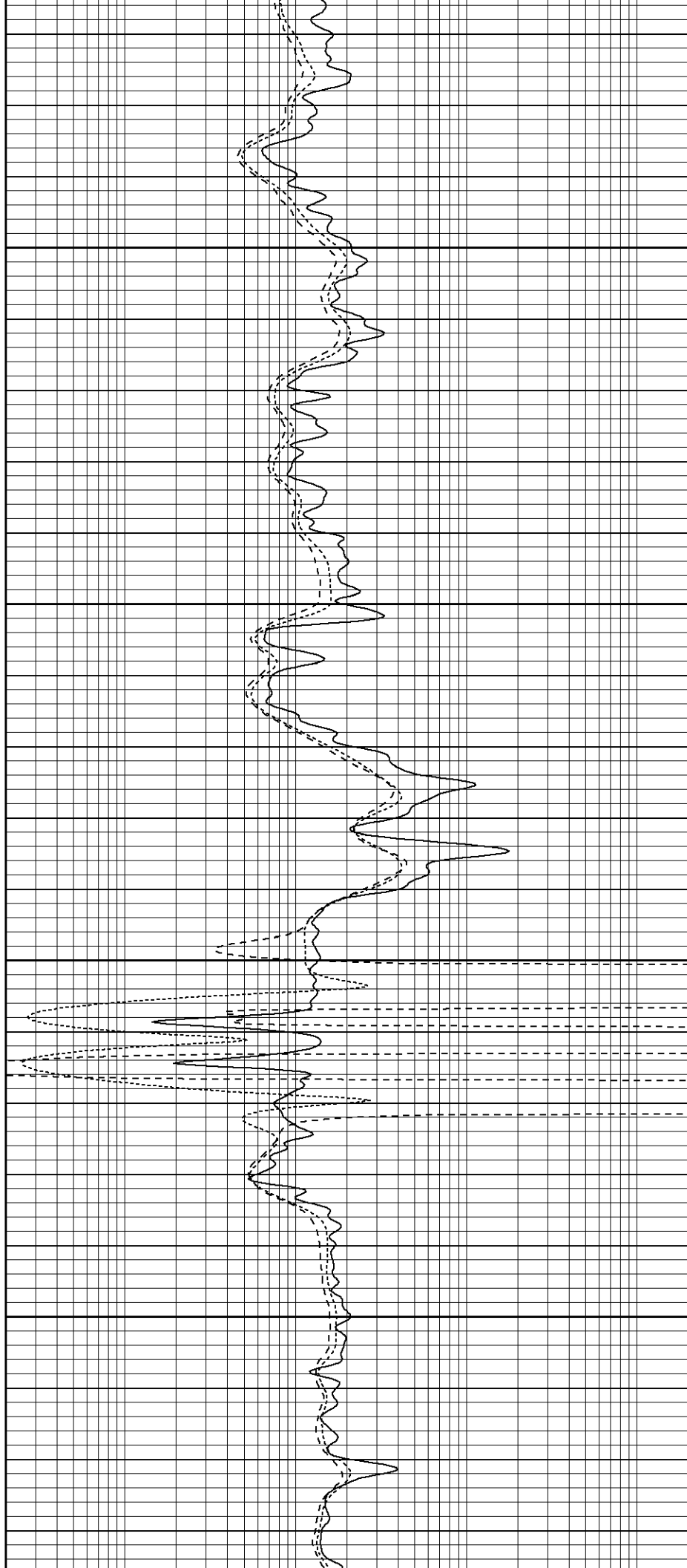


2000

2050

2100

2150





2200

2250

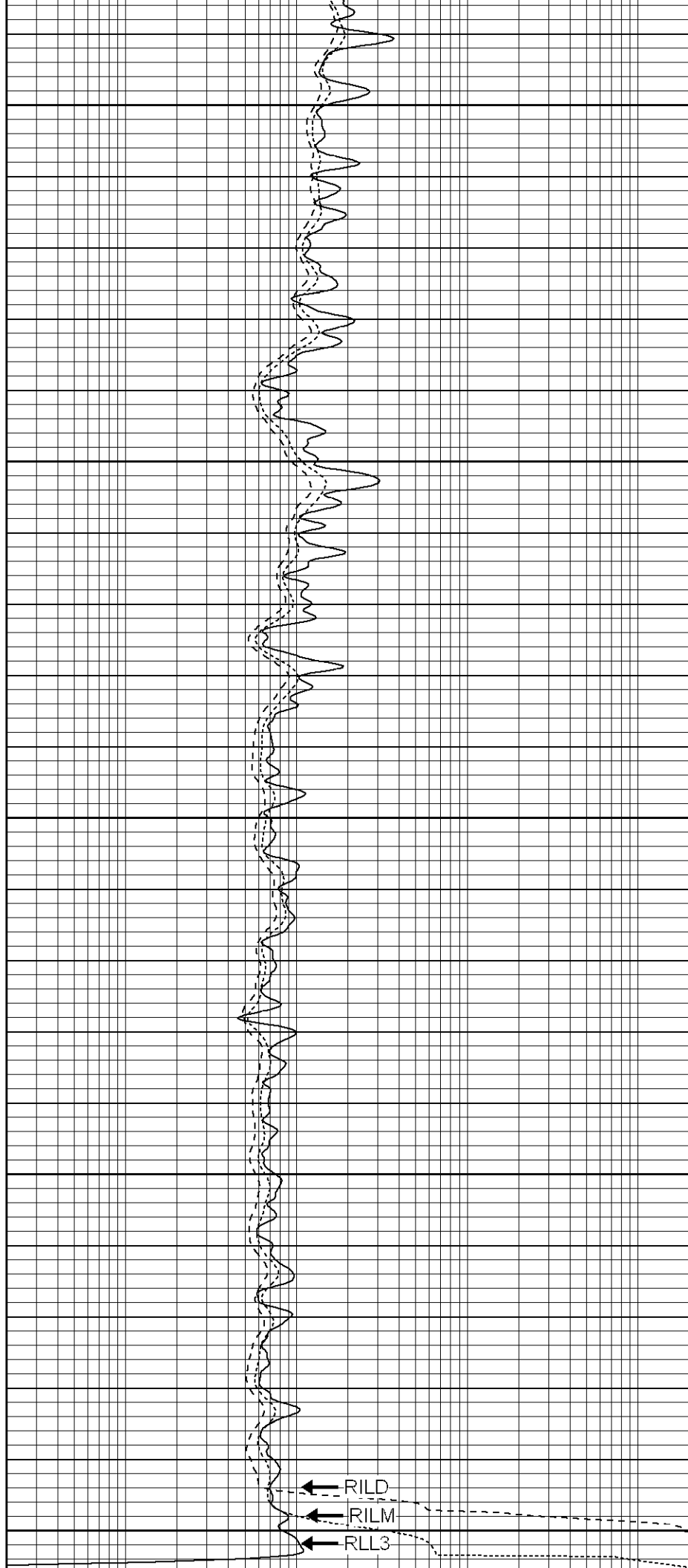
2300

2350

GR

SP

2400



RILD

RILM

RLL3

0	GR (GAPI)	200
-100	SP (mV)	100
<hr/>		

0.2	RILM (Ohm-m)	2000
0.2	RILD (Ohm-m)	2000
0.2	RLL3 (Ohm-m)	2000
<hr/>		



SUPERIOR

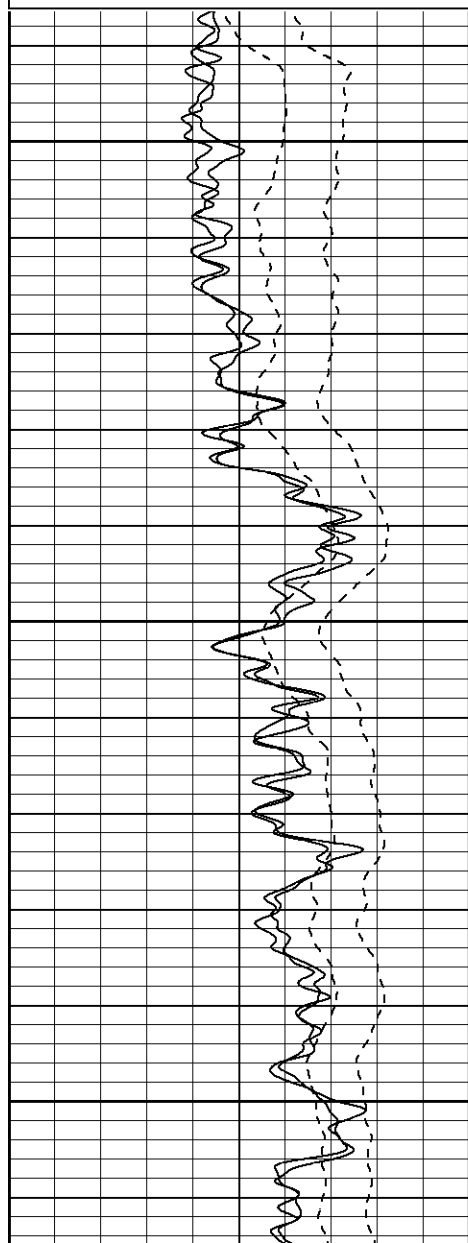
Black Lick, Pa.
Mercer, Pa.
Wooster, Oh.
Cleveland, Ok.
Trinidad, Co.

Repeat Section

Database File: xtohr3602.db
Dataset Pathname: pass1.1
Presentation Format: dil
Dataset Creation: Tue Mar 27 10:41:39 2007 by Calc Open-Cased 061129
Charted by: Depth in Feet scaled 1:240

0	GR (GAPI)	200
-100	SP (mV)	100
<hr/>		
0	GR-repeat (GAPI)	200
-100	SP-repeat (mV)	100
<hr/>		

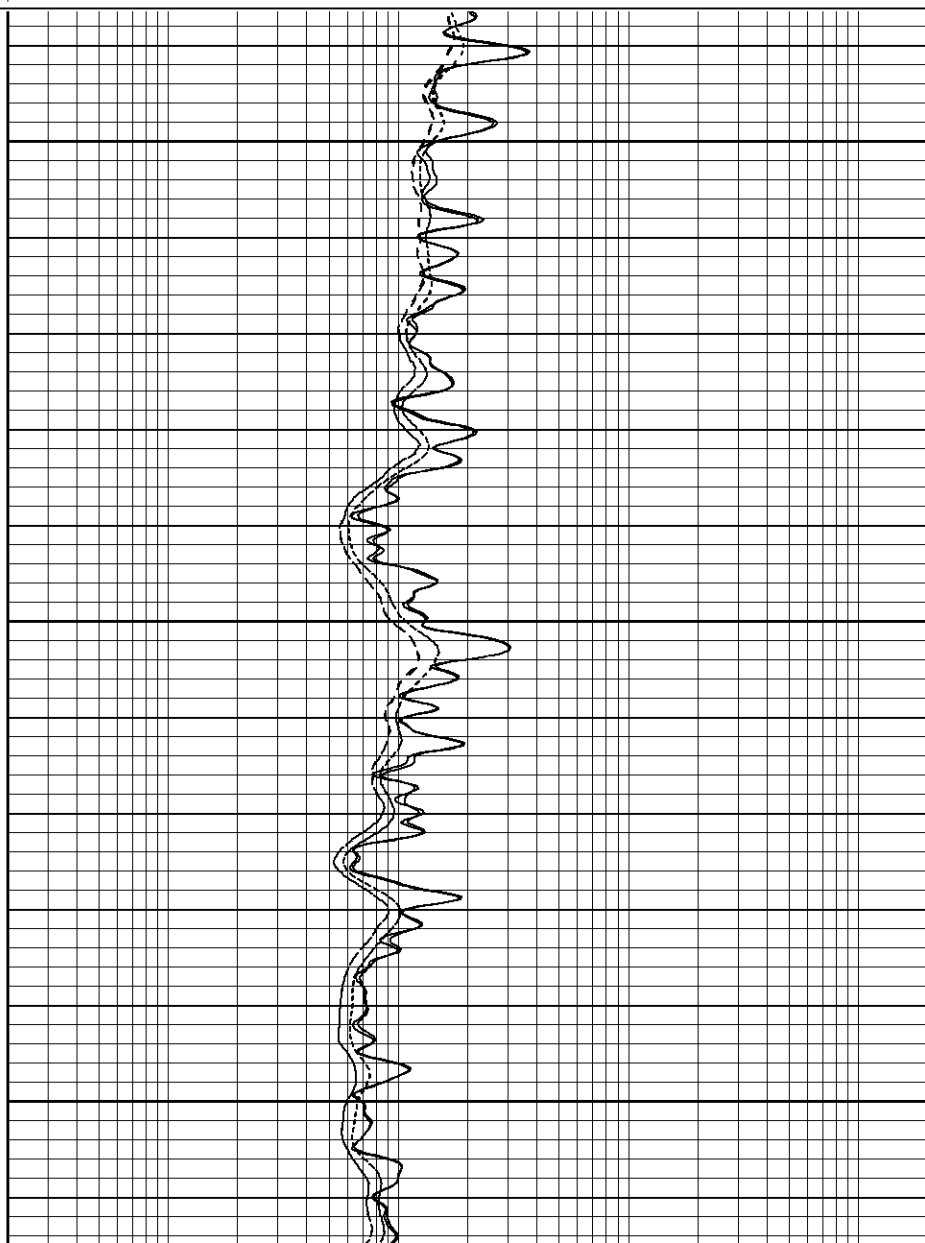
0.2	RILM (Ohm-m)	2000
0.2	RILD (Ohm-m)	2000
0.2	RLL3 (Ohm-m)	2000
0.2	RLL3-repeat (Ohm-m)	2000
0.2	RILM-repeat (Ohm-m)	2000
0.2	RILD-repeat (Ohm-m)	2000
<hr/>		

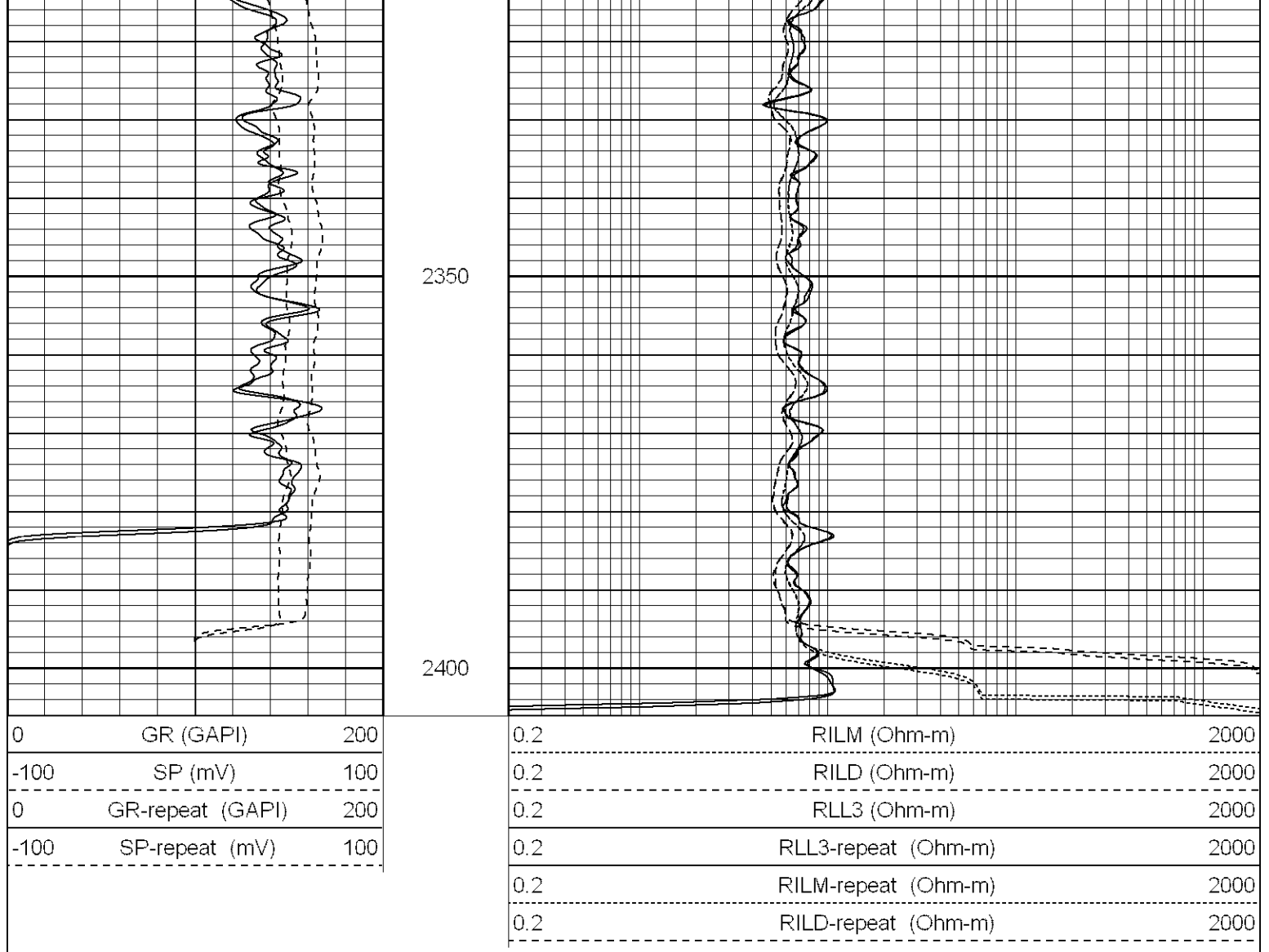


2200

2250

2300





Calibration Report

Database File: xtohr3602.db
 Dataset Pathname: pass2
 Dataset Creation: Tue Mar 27 08:50:28 2007 by Log Open-Cased 061129

Dual Induction Calibration Report

Serial-Model: 5375-G
 Surface Cal Performed: Fri Jan 19 08:02:09 2007
 Downhole Cal Performed: Sun Jan 21 14:02:19 2007

Surface Calibration

Loop:	Readings			References			Results	
	Air	Loop		Air	Loop		m	b
Deep	0.001	0.620	V	0.000	500.000	mmho-m	807.659	-1.119
Medium	0.005	0.743	V	0.000	550.000	mmho-m	744.727	-3.505
Internal:	Zero	Cal		Zero	Cal		m	b
Deep	0.001	0.620	V	0.000	500.000	mmho-m	807.698	-1.159
Medium	0.005	0.743	V	0.000	550.000	mmho-m	744.801	-3.569

Downhole Calibration



Readings

References

Results

Internal:	Zero	Cal		Zero	Cal		m	b
Deep	0.123	499.901	mmho-m	0.039	500.015	mmho-m	1.000	-0.084
Medium	0.245	549.982	mmho-m	0.064	550.009	mmho-m	1.000	-0.182
Shallow	2.506	0.009	V	500.000	2.000	Ohm-m	150.000	0.000

Gamma Ray Calibration Report			
Serial Number:	2001		
Tool Model:	OH		
Performed:	Fri Mar 16 09:38:15 2007		
Calibrator Value:	1.0	GAPI	
Background Reading:	0.0	cps	
Calibrator Reading:	1.0	cps	
Sensitivity:	0.1700	GAPI/cps	

Sensor	Offset (ft)	Schematic	Description	Len (ft)	OD (in)	Wt (lb)
GR	22.83		None	0.75	1.50	5.00
			GR-OH (2001) SIE	3.50	3.25	40.00
CILD SP	10.60 10.60		DIL-G (5375) Gearhart	20.83	4.00	345.00
CILM	6.89					
RLL3	1.70					

Dataset:	xtohr3602.db: field/well/run1/pass2
Total Length:	25.08 ft
Total Weight:	390.00 lb
O.D.	4.00 in