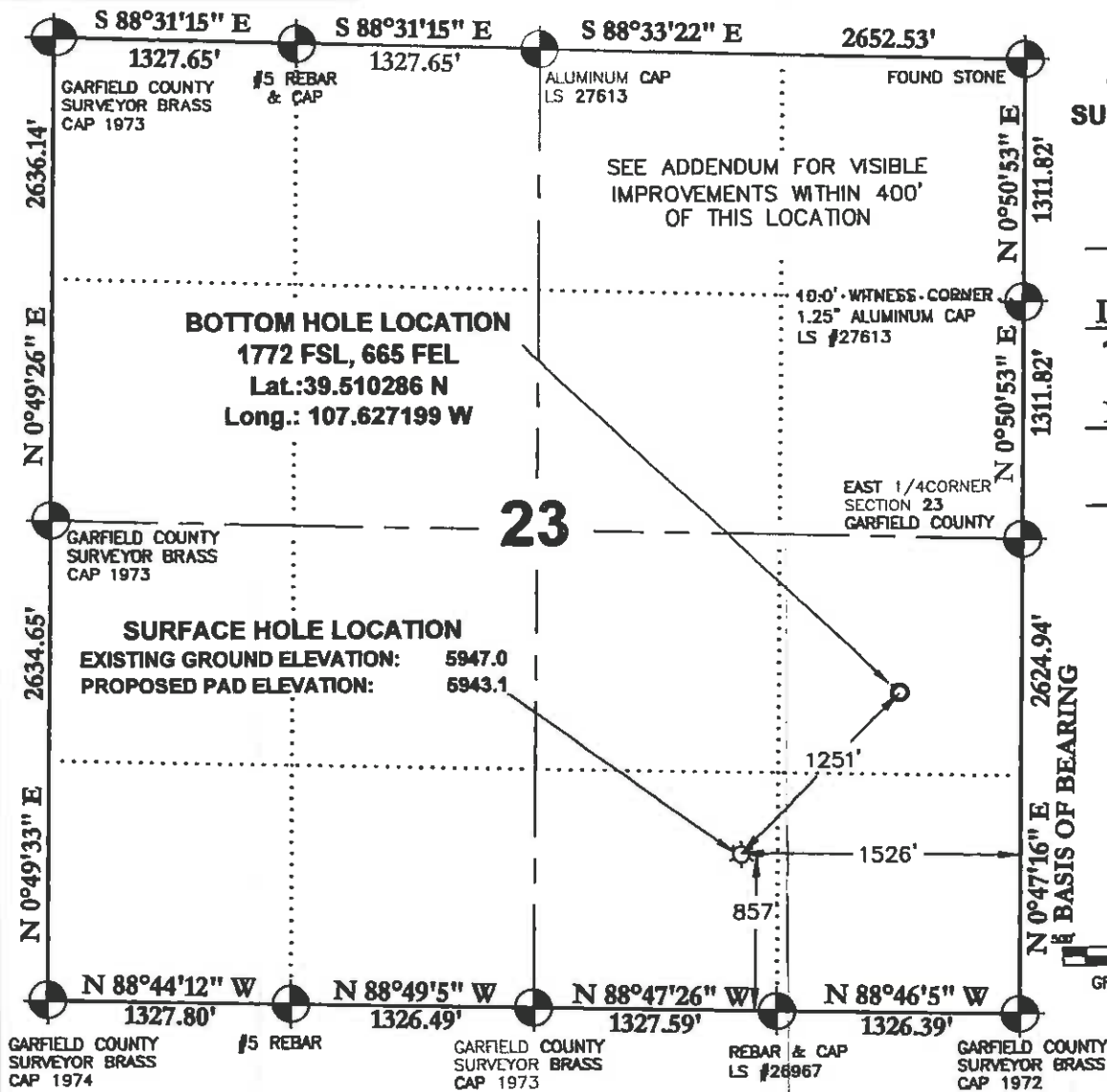
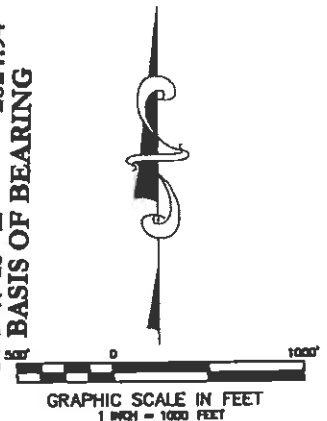


WERNER
43B-23-692
SURFACE LOCATION
 857 FSL
 1526 FEL

LATITUDE
39.507771 N
LONGITUDE
107.630220 W
NORTHING
1616880.8
EASTING
2399006.5



SURVEYORS STATEMENT:

I, JAMES A. KALMON, A REGISTERED LAND SURVEYOR IN THE STATE OF COLORADO DO HEREBY CERTIFY THAT THE SURVEY SHOWN HEREON WAS PREPARED UNDER MY DIRECT SUPERVISION AND CHECKING THAT THIS MAP IS A TRUE REPRESENTATION THEREOF.

[Signature]
 38050
 1-15-10

JAMES A. KALMON, COLORADO REGISTRATION NO. 38050
 FOR AND ON BEHALF OF ECLIPSE SURVEYING, INC.

LEGEND:

- FIELD LOCATED SECTION MONUMENTS AS DESCRIBED
- SURFACE HOLE LOCATION
- BOTTOM HOLE LOCATION
- CALCULATED SECTION CORNER LOCATION

NOTES:

- 1) ELEVATIONS BASED ON N.A. V.D. 1988
- 2) LATITUDES AND LONGITUDES ARE BASE ON NAD 83, COLORADO CENTRAL ZONE.
- 3) WELL MEASURED 90° FROM SECTION LINES.
- 4) THE BASIS OF BEARING IS FROM GPS OBSERVATION RESULTING IN THE BEARING BETWEEN THE FOUND MONUMENTS AS SHOWN.
- 5) ELEVATION MASK SET TO 15°
- 6) PDOP SET TO 6



ECLIPSE
surveying

111 E. THIRD ST., SUITE 208, RIFLE, CO 81650
 (970) 625-3048

REV. DATE: 01/15/10
 SURVEY DATE: 10/08/09
 RELEASE DATE: 10/21/09
 SCALE: 1" = 1000'
 SHEET: 1 of 7
 PROJECT #: WERNER

Bill Barrett Corporation

SW¹/₄SE¹/₄, SECTION 23
 T. 6 S., R. 92 W. of the 6th. P.M.
 GARFIELD COUNTY, COLORADO