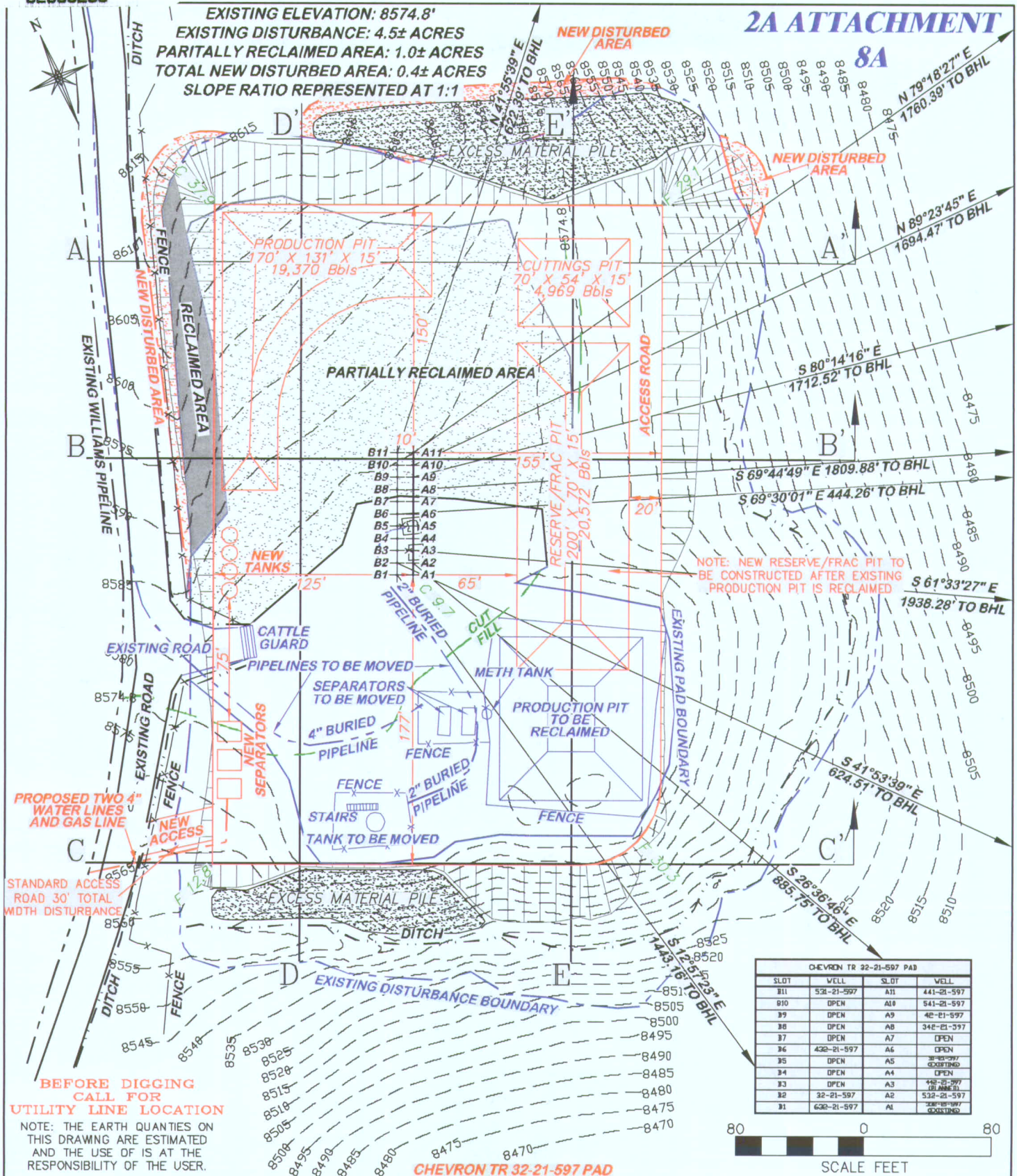




2095275 Construction Layout Drawings

1 of 4



BEFORE DIGGING
CALL FOR
UTILITY LINE LOCATION

NOTE: THE EARTH QUANTITIES ON
THIS DRAWING ARE ESTIMATED
AND THE USE OF IS AT THE
RESPONSIBILITY OF THE USER.



RIFFIN & ASSOCIATES, INC.

1414 ELK ST., ROCK SPRINGS, WY 82901

(307) 382-5028

DRAWN: 2/24/06

SCALE: 1" = 80'

REVISED: 1/21/10 - MMM

DRG JOB No. 12855

MISC. REVISIONS

EXHIBIT 2 - SHEET 1 OF 2

CONSTRUCTION LAYOUT DRAWING 1 OF 4

WILLIAMS PRODUCTION RMT COMPANY

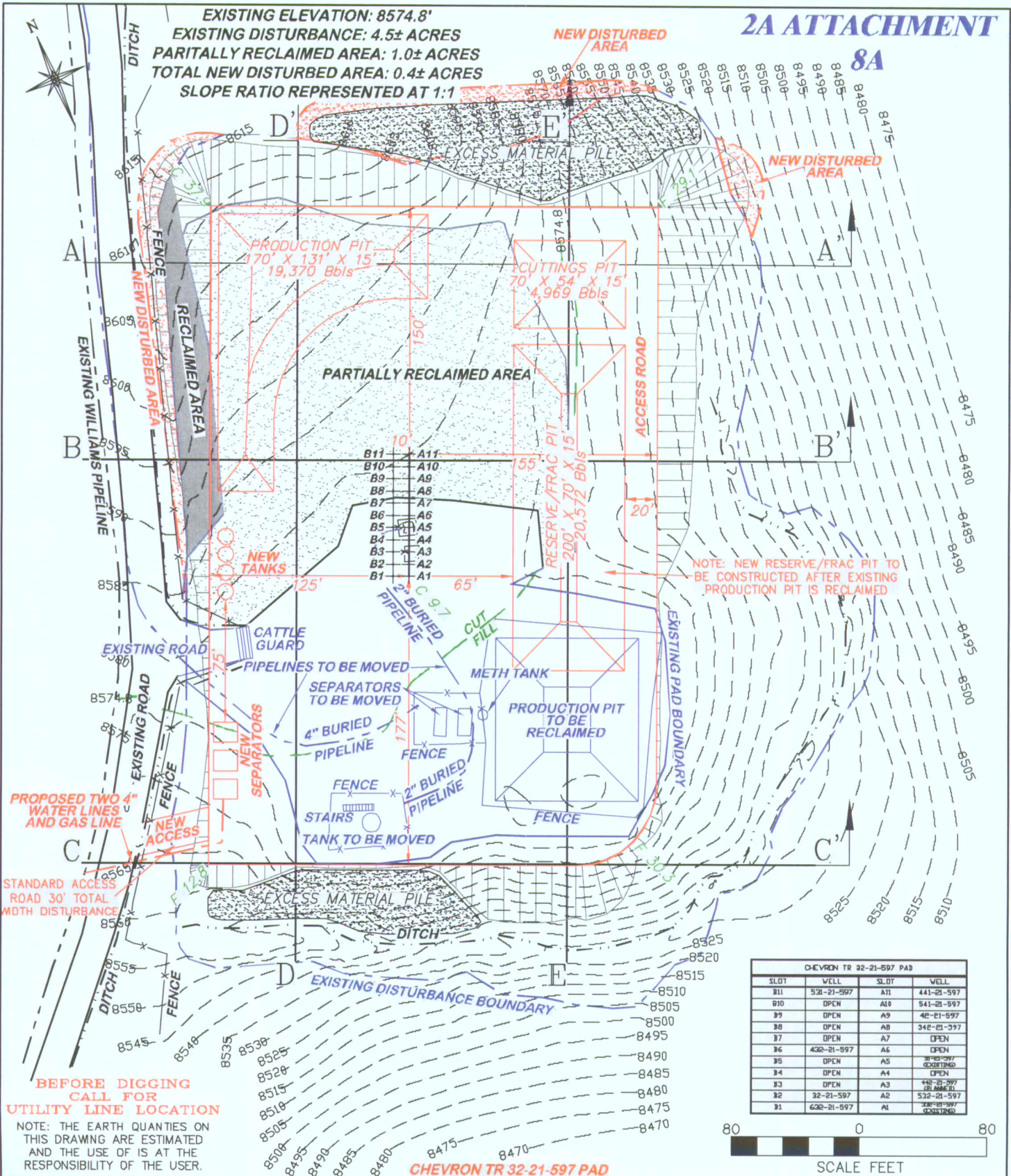
CHEVRON TR 31, 32, 42, 332, 342, 432, 441, 442, 531, 532, 541,
632-21-597

SWNE, SWNE, SECTION 36, T5S, R97W, 6th P.M., 6th P.M.

ESTIMATED EARTHWORK (ALL PITS INCLUDED)

ITEM	CUT	FILL	TOPSOIL	EXCESS
PAD	21076 CY	5349 CY	2088 CY	13639 CY
PIT	9339 CY			9339 CY
TOTALS	30415 CY	5349 CY	2088 CY	22978 CY

EXISTING ELEVATION: 8574.8'
 EXISTING DISTURBANCE: 4.5± ACRES
 PARTIALLY RECLAIMED AREA: 1.0± ACRES
 TOTAL NEW DISTURBED AREA: 0.4± ACRES
 SLOPE RATIO REPRESENTED AT 1:1



RIFFIN & ASSOCIATES, INC.

1414 ELK ST., ROCK SPRINGS, WY 82901

(307) 362-5028

DRAWN: 2/24/06

SCALE: 1" = 80'

REVISED: 1/21/10 - MMM

DRG JOB No. 12855

MISC. REVISIONS

EXHIBIT 2 - SHEET 2 OF 2

CONSTRUCTION LAYOUT DRAWING 2 OF 4

WILLIAMS PRODUCTION RMT COMPANY

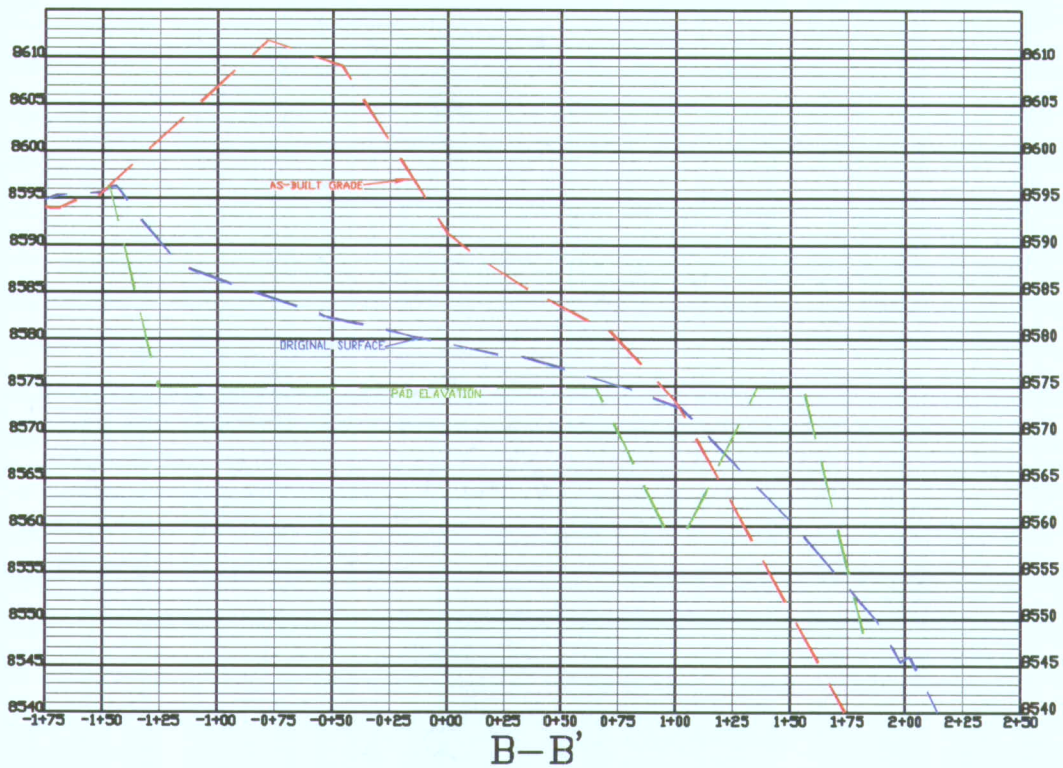
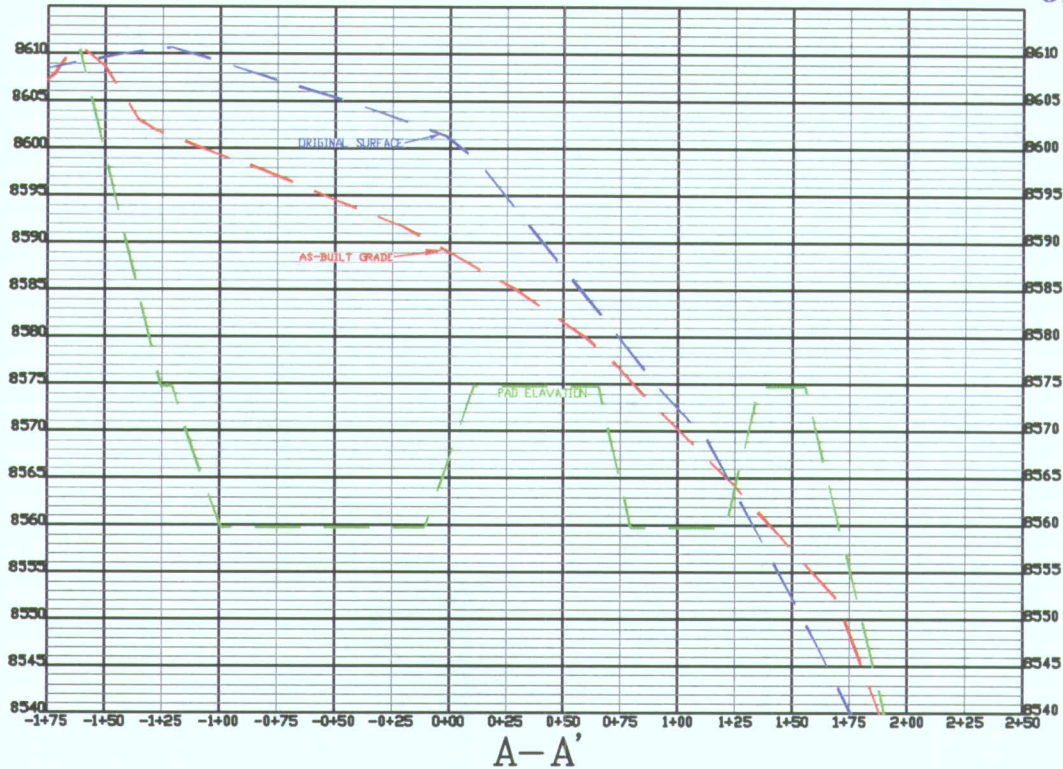
CHEVRON TR 31, 32, 42, 332, 342, 432, 441, 442, 531, 532, 541, 632-21-597

SWNE, SWNE, SECTION 36, T5S, R97W, 6th P.M., 6th P.M.

ESTIMATED EARTHWORK (ALL PITS INCLUDED)

ITEM	CUT	FILL	TOPSOIL	EXCESS
PAD	21076 CY	5349 CY	2088 CY	13639 CY
PIT	9339 CY			9339 CY
TOTALS	30415 CY	5349 CY	2088 CY	22978 CY

2A ATTACHMENT 8B



CHEVRON TR 32-21-597 PAD

DRG RIFFIN & ASSOCIATES, INC.
(307) 362-5028 1414 ELK ST., ROCK SPRINGS, WY 82901

DRAWN: 12/23/09 - MMM

HORZ. 1" = 80' VERT. 1" = 20'

REVISED: 1/20/10 - MMM

DRG JOB No. 12855

MISC. REVISIONS

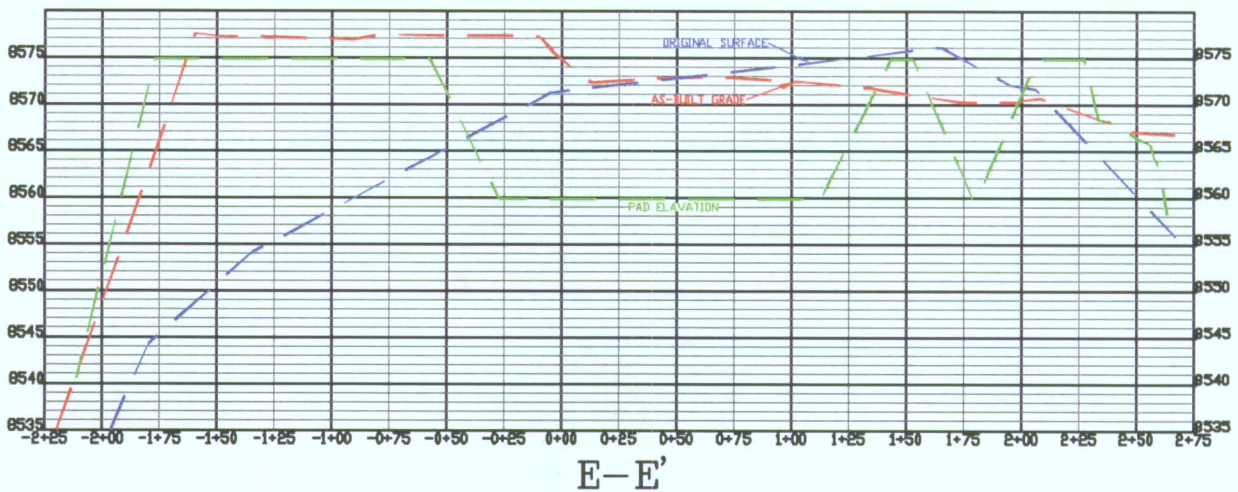
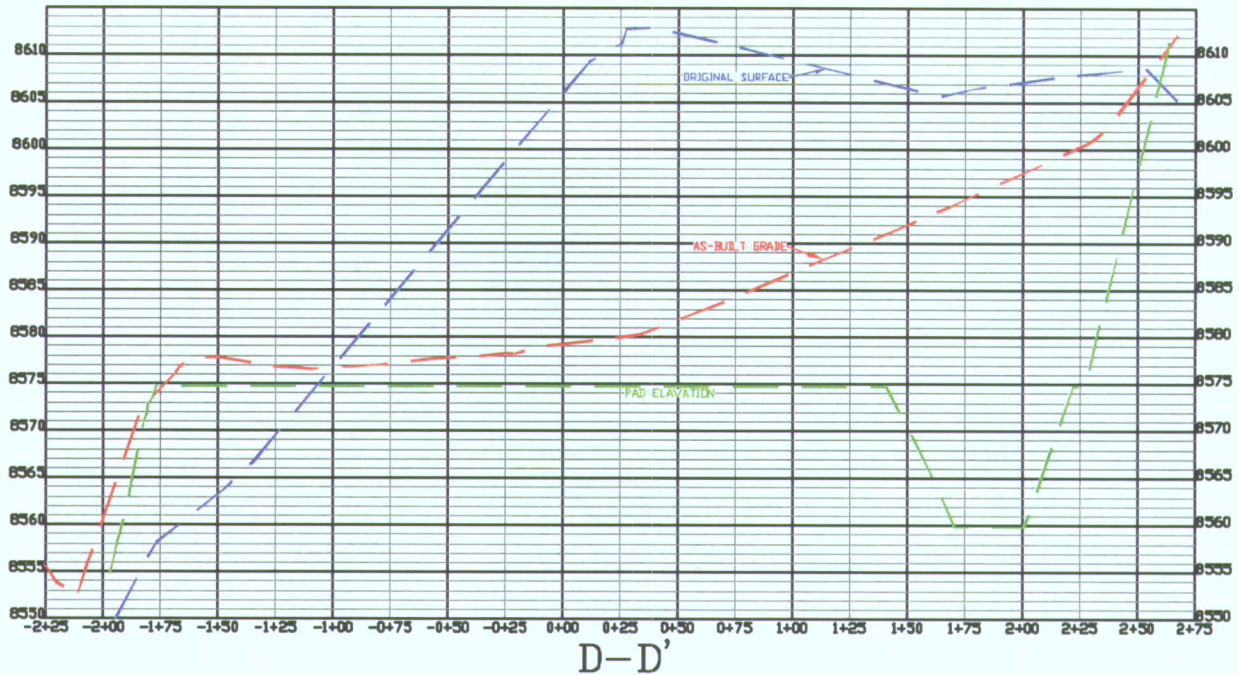
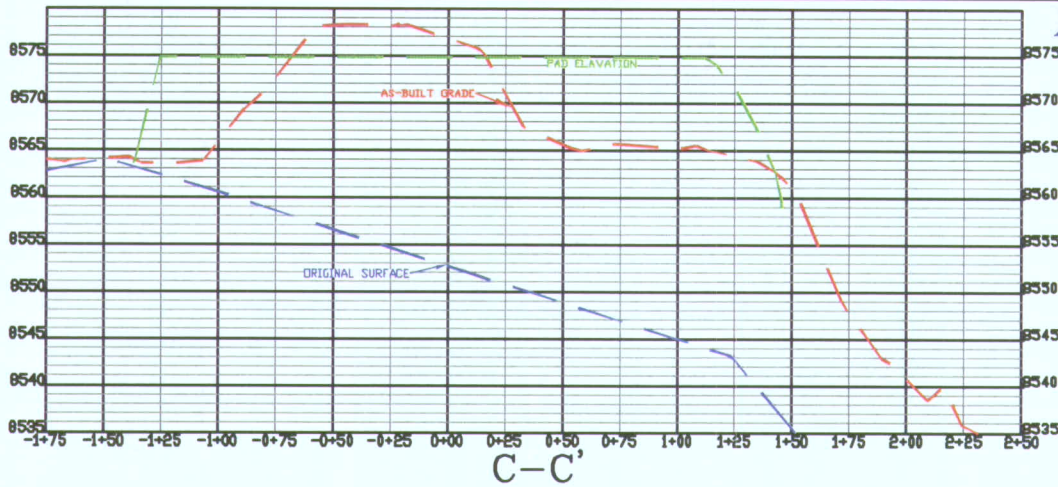
EXHIBIT 3 - SHEET 1 OF 2

CONSTRUCTION LAYOUT DRAWING 3 OF 4

WILLIAMS PRODUCTION RMT COMPANY
CHEVRON TR 31, 32, 42, 332, 342, 432, 441, 442,
531, 532, 541, 632-21-597
SWNE, SWNE, SECTION 36, T5S, R97W, 6th P.M.,
6th P.M.

EXISTING ELEVATION: 8574.8'

2A ATTACHMENT 8B



CHEVRON TR 32-21-597 PAD

DRG RIFFIN & ASSOCIATES, INC.
(307) 362-5028 1414 ELK ST., ROCK SPRINGS, WY 82901

CONSTRUCTION LAYOUT DRAWING 4 OF 4
WILLIAMS PRODUCTION RMT COMPANY
CHEVRON TR 31, 32, 42, 332, 342, 432, 441, 442,
531, 532, 541, 632-21-597
SWNE, SWNE, SECTION 36, T5S, R97W, 6th P.M.,
6th P.M.

EXISTING ELEVATION: 8574.8'

DRAWN: 12/23/09 - MMM

HORZ. 1" = 80' VERT. 1" = 20'

REVISED: 1/20/10 - MMM

DRG JOB No. 12855

MISC. REVISIONS

EXHIBIT 3 - SHEET 2 OF 2