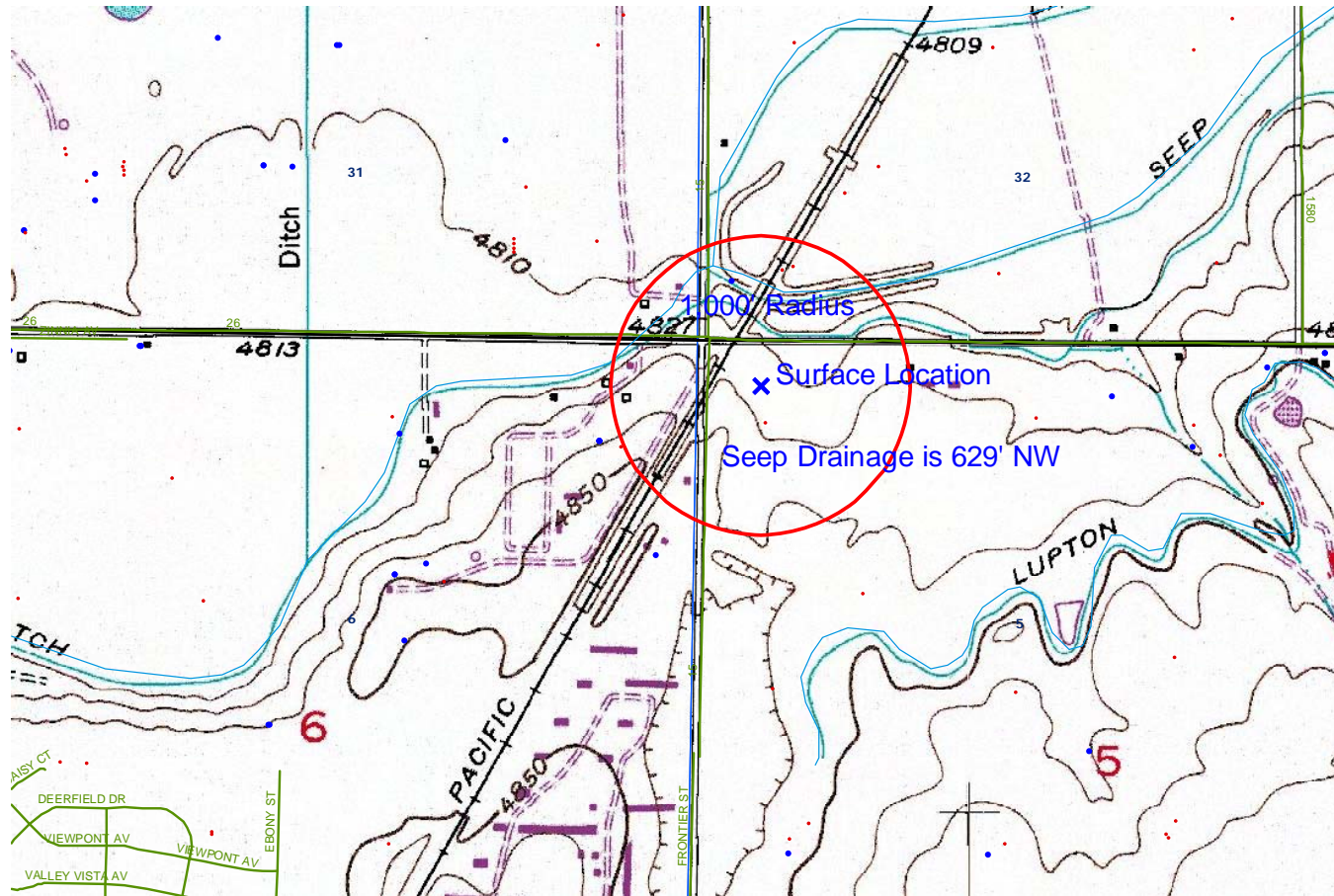


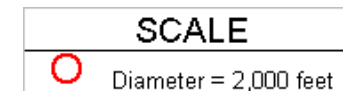
VOGL 31-5

TOPO

HYDROLOGY MAP-A



TOWNSHIP 2 NORTH, RANGE 67 WEST



### LEGEND A

#### WATER RESOURCES

- Water Wells
- Lakes
- Major Rivers
- Streams
- 300-Foot Stream Buffers

### LEGEND B

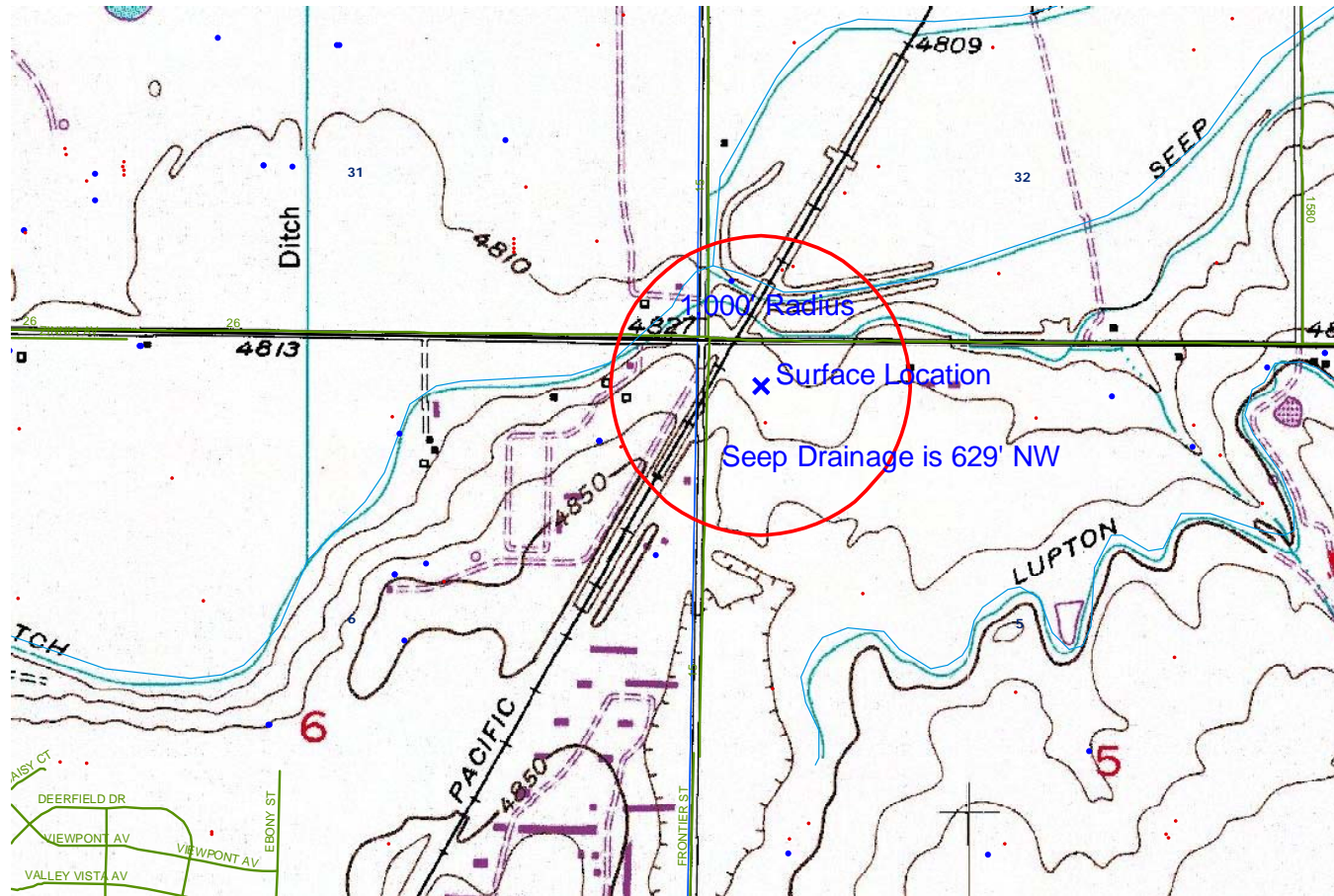
#### 1200-SEARIES WILDLIFE AREAS

- RSO Areas
- RSO\_Osprey\_Curren
- SWH Areas
- State Wildlife Areas

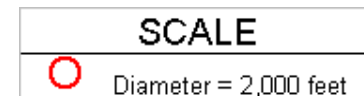
VOGL 31-5

TOPO

HYDROLOGY MAP-B



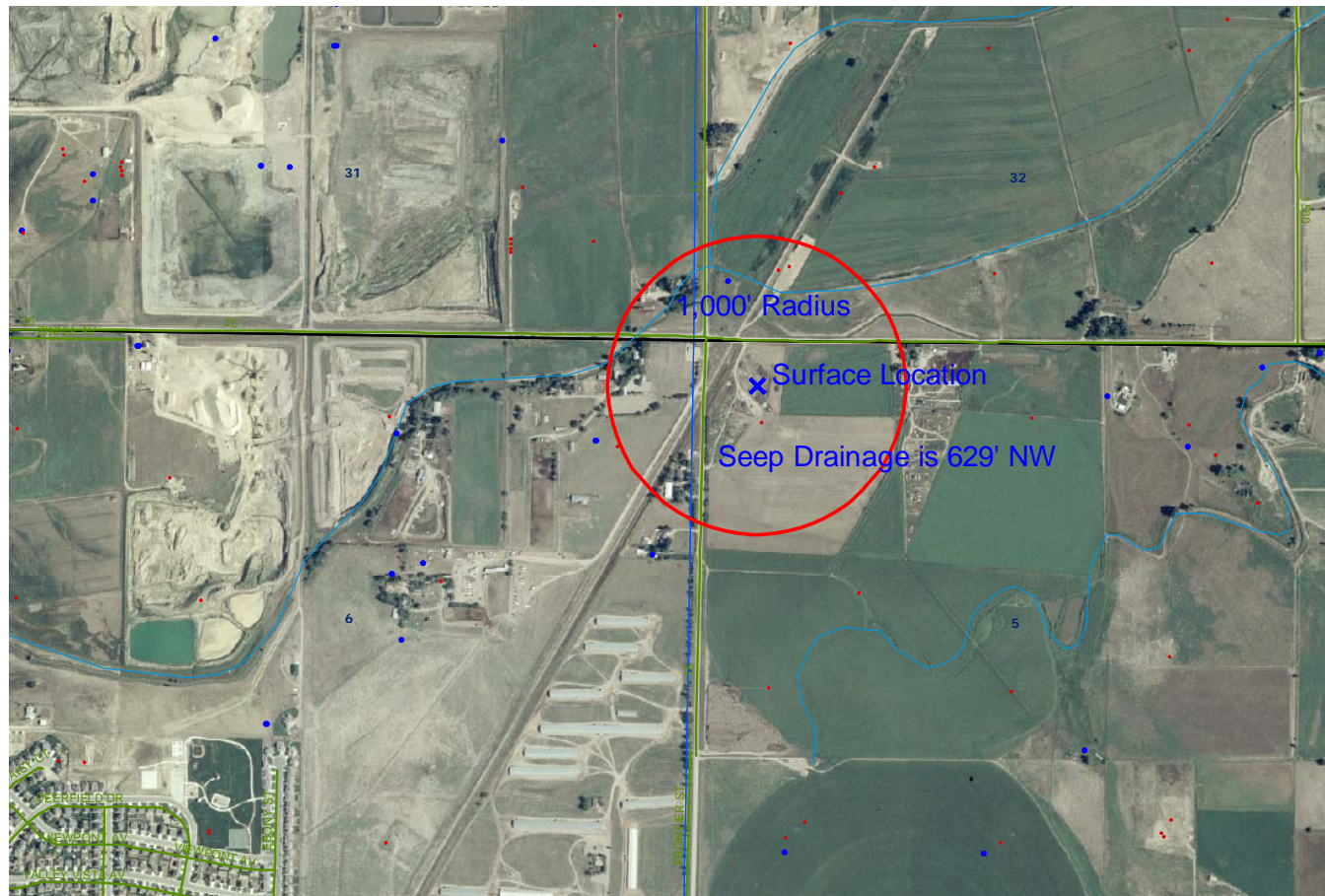
TOWNSHIP 2 NORTH, RANGE 67 WEST



LEGEND A
WATER RESOURCES
Water Wells
Lakes
Major Rivers
Streams
300-Foot Stream Buffers


LEGEND B
1200-SEARIES WILDLIFE AREAS
RSO Areas
RSO_Osprey_Curren
SWH Areas
State Wildlife Areas





TOWNSHIP 2 NORTH, RANGE 67 WEST

SCALE

 Diameter = 2,000 feet

## LEGEND A

## WATER RESOURCES

-  Water Wells
-  Lakes
-  Major Rivers
-  Streams
-  300-Foot Stream Buffers

## LEGEND B


## 1200-SEARIES WILDLIFE AREAS

-  RSO Areas
-  RSO\_Osprey\_Curren
-  SWH Areas
-  State Wildlife Areas



TOWNSHIP 2 NORTH, RANGE 67 WEST

SCALE

 Diameter = 2,000 feet

## LEGEND A

## WATER RESOURCES

-  Water Wells
-  Lakes
-  Major Rivers
-  Streams
-  300-Foot Stream Buffers

## LEGEND B

## 1200-SEARIES WILDLIFE AREAS

-  RSO Areas
-  RSO\_Osprey\_Curren
-  SWH Areas
-  State Wildlife Areas