
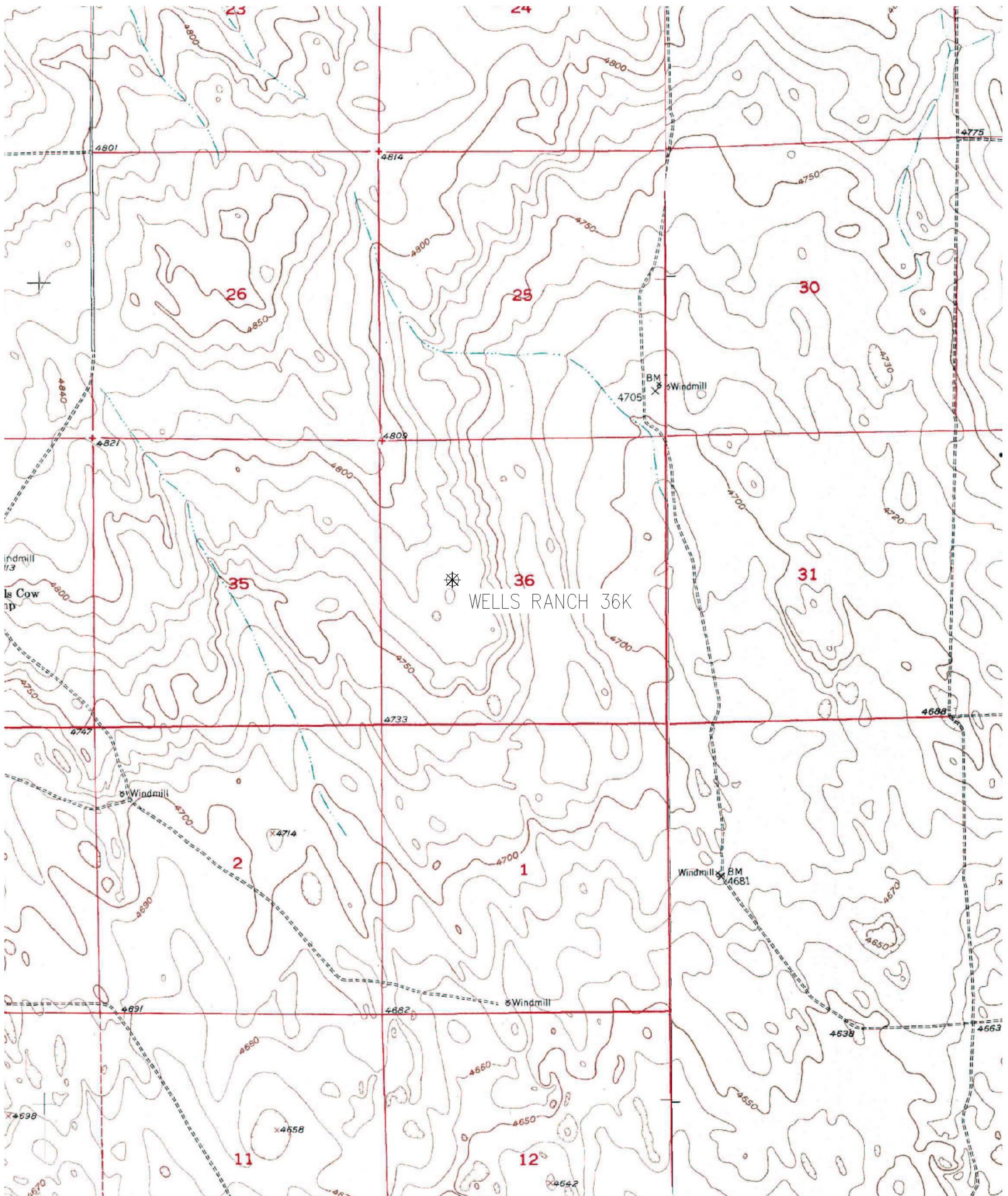


## WELL LOCATION ON USGS QUAD



# ASELINE

engineering corporation

920 9TH AVENUE  
GREELEY, CO. 80631  
PH (970) 353-7600  
FAX (970) 353-7601

LEGEND

✱ PROPOSED WELL (SURFACE UNLESS NOTED)

← PROPOSED ACCESS LOCATION

SURFACE LOCATION: SENW SECTION 36, T6N, R63W, 6TH P.M. WELD COUNTY, CO

DATE: 6/19/2008

FIELD DATE: 6-18-2008

|            |                 |
|------------|-----------------|
| WELL NAME: | WELLS RANCH 36K |
|------------|-----------------|

SHEET #: TOPO

