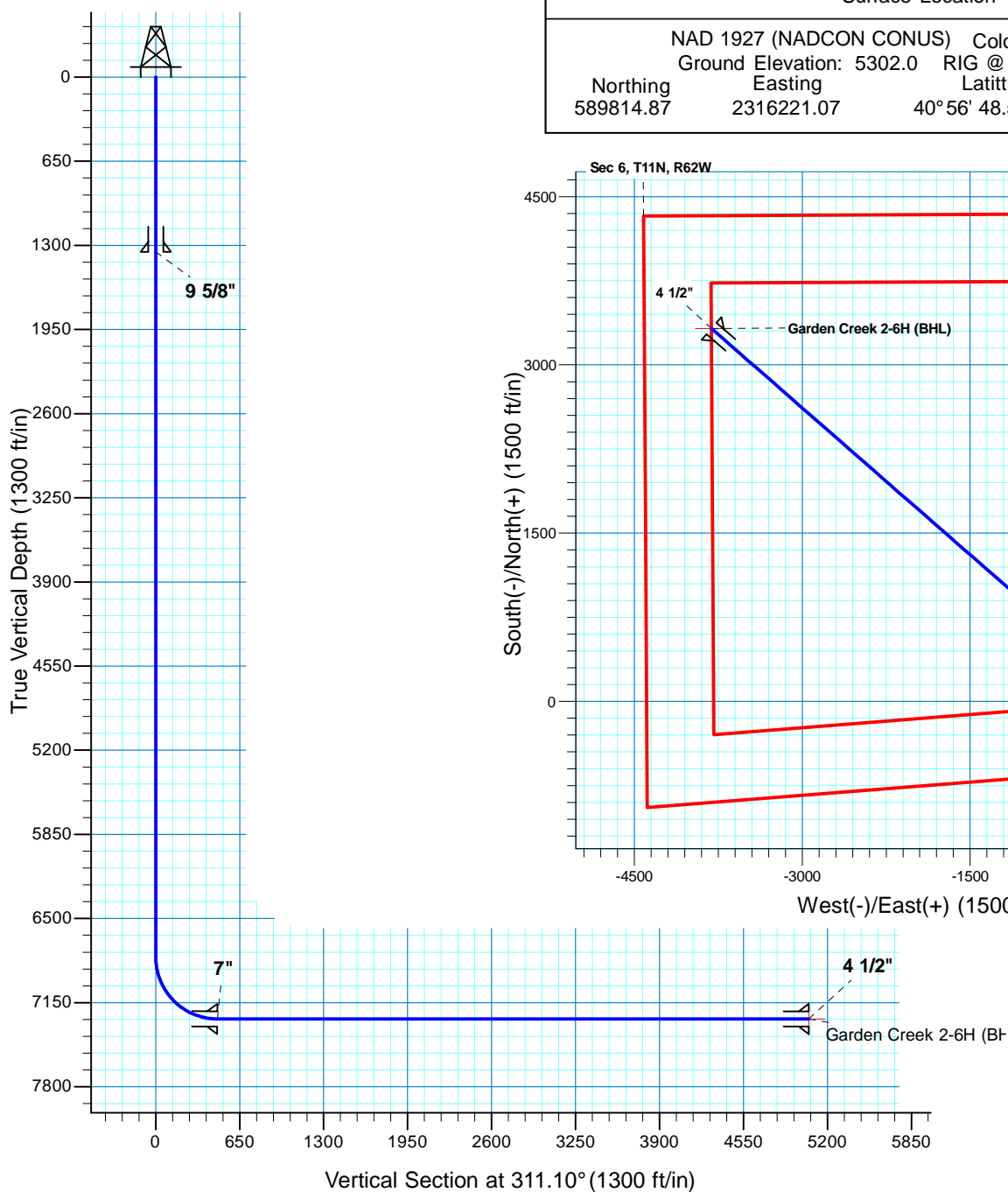


Garden Creek 2-6H

Section 6 T11N R62W
Weld County, CO



Surface Location			
NAD 1927 (NADCON CONUS) Colorado North 501			
Ground Elevation: 5302.0 RIG @ 5319.0ft (TBD)			
Northing	Easting	Latitude	Longitude
589814.87	2316221.07	40° 56' 48.592 N	104° 21' 19.310 W

T M
 Azimuths to True North
 Magnetic North: 8.84°
 Magnetic Field
 Strength: 53624.9nT
 Dip Angle: 67.62°
 Date: 1/8/2010
 Model: IGRF200510

Project: DJ - Hereford Ranch
 Site: Garden Creek 2-6H
 Well: Garden Creek 2-6H
 Plan: APD

SECTION DETAILS										
Sec	MD	Inc	Azi	TVD	+N/-S	+E/-W	DLeg	TFace	VSec	Target
1	0.0	0.00	0.00	0.0	0.0	0.0	0.00	0.00	0.0	
2	6798.5	0.00	0.00	6798.5	0.0	0.0	0.00	0.00	0.0	
3	7548.5	90.00	311.10	7276.0	313.9	-359.8	12.00	311.10	477.5	
4	12127.1	90.00	311.10	7276.0	3323.9	-3809.8	0.00	0.00	5056.0	Garden Creek 2-6H (BHL)
TARGET DETAILS										
Name	TVD	+N/-S	+E/-W	Northing	Easting	Latitude	Longitude	Shape		
Garden Creek 2-6H (BHL)	7276.0	3323.9	-3809.8	593089.33	2312368.67	40° 57' 21.431 N	104° 22' 8.962 W	Point		