



# Berry Petroleum Company

1999 Broadway St., Suite 3700  
Denver, CO 80202

Ph: (303) 825-3344  
Fax: (303) 825-3350

[www.bry.com](http://www.bry.com)

January 14, 2010

Walter Jones  
Chevron U.S.A. Inc.  
11111 S. Wilcrest  
Room N-1045  
Houston, TX 77099

RE: 30 Day Notice Requirement (Rule 305 and 306)  
Re-file 8 wells from L35 pad location  
NWSW Sec. 35 5S 96W  
Garfield County, Colorado

Dear Mr. Jones:

Please be advised that Berry Petroleum Company will be re-filing eight (8) well permits with the Colorado Oil and Gas Conservation Commission to be drilled from the above referenced pad. Chevron previously approved this pad by letter dated December 29, 2008.

The enclosed notification, pursuant to Rule 305 and 306, is required as part of the permitting process. Also attached are plats for your review. If applicable, please sign and date where indicated and return to my attention.

Please contact the undersigned if you have any questions.

Thank you for your assistance in this matter.

Very truly yours,

Jerry L. Gonzalez  
Senior Landman  
303-999-4207

:enclosures

cc: Janni Keidel  
Land Well Files

**NOTICE REQUIREMENTS (RULE 305)**  
**L35 596 Pad**

**Re: Well Name – Chevron 35-14D, 35-16D, 35-15D, 35-13D, 35-12D, 35-11D, 35-10D, 35-9D – Section 35 5S 96W, Garfield County, CO**

In accordance with the Colorado Oil and Gas Conservation Commission for Notices of Oil and Gas Operations, Rule 305, the following information is required to be provided:

- Operations on the above referenced wells are estimated to commence March 1, 2010
- The operator will be: Berry Petroleum Company  
1999 Broadway, Suite # 3700  
Denver, Colorado 80202  
(303) 999-4400
- You may contact: Jerry L. Gonzalez, Senior Landman at (303) 999-4207, if you have any questions regarding this notice.
- **Chevron 35-14D**  
The legal description of the lands upon which operations will be conducted are:  
SHL: 1544' FSL and 560' FWL, Sec. 35, T5S, R96W  
BHL: 1820' FSL and 660' FWL, Sec. 35, T5S, R96W  
Garfield County, Colorado.
- **Chevron 35-16D**  
The legal description of the lands upon which operations will be conducted are:  
SHL: 1535' FSL and 548' FWL, Sec. 35, T5S, R96W  
BHL: 2460' FSL and 660' FWL, Sec. 35, T5S, R96W  
Garfield County, Colorado.
- **Chevron 35-15D**  
The legal description of the lands upon which operations will be conducted are:  
SHL: 1526' FSL and 536' FWL, Sec. 35, T5S, R96W  
BHL: 2140' FSL and 515' FWL, Sec. 35, T5S, R96W  
Garfield County, Colorado.

Page 2

Chevron 35-14D, 35-16D, 35-15D, 35-13D,  
35-12D, 35-11D, 35-10D and 35-9D

NWSW Sec. 35 5S 96W

Chevron U.S.A. Inc.

January 14, 2010

- **Chevron 35-13D**  
The legal description of the lands upon which operations will be conducted are:  
SHL: 1517' FSL and 524' FWL, Sec.35, T5S, R96W,  
BHL: 1500' FSL and 660' FWL, Sec.35, T5S, R96W,  
Garfield County, Colorado.
- **Chevron 35-12D**  
The legal description of the lands upon which operations will be conducted are:  
SHL: 1508' FSL and 512' FWL, Sec.35, T5S, R96W  
BHL: 1180' FSL and 660' FWL, Sec.35, T5S, R96W  
Garfield County, Colorado.
- **Chevron 35-11D**  
The legal description of the lands upon which operations will be conducted are:  
SHL: 1499' FSL and 500' FWL, Sec. 35, T5S, R96W  
BHL: 860' FSL and 725' FWL, Sec. 35, T5S, R96W  
Garfield County, Colorado.
- **Chevron 35-10D**  
The legal description of the lands upon which operations will be conducted are:  
SHL: 1490' FSL and 488' FWL, Sec. 35, T5S, R96W  
BHL: 540' FSL and 710' FWL, Sec. 35, T5S, R96W  
Garfield County, Colorado.
- **Chevron 35-9D**  
The legal description of the lands upon which operations will be conducted are:  
SHL: 1481' FSL and 476' FWL, Sec. 35, T5S, R96W  
BHL: 220' FSL and 610' FWL, Sec. 35, T5S, R96W  
Garfield County, Colorado.

Page 3

Chevron 35-14D, 35-16D, 35-15D, 35-13D,  
35-12D, 35-11D, 35-10D and 35-9D

NWSW Sec. 35 5S 96W

Chevron U.S.A. Inc.

January 14, 2010

- The surface owner has the responsibility for notifying any affected tenant of the proposed operations.
- A brochure describing surface owner rights is available upon request from:  
Colorado Oil and Gas Conservation Commission  
1120 Lincoln Street  
Suite 801  
Denver, Co 80203

By signing below, the surface owner waives the above notification requirements of Rule 305.

Chevron U.S.A. Inc.

By: \_\_\_\_\_

Printed Name: \_\_\_\_\_

Title: \_\_\_\_\_

Date: \_\_\_\_\_



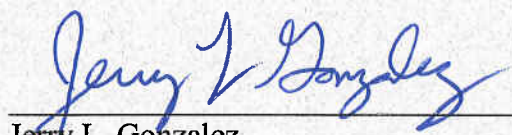
**SURFACE OWNER CONSULTATION (RULE 306)**  
L35 596 Pad

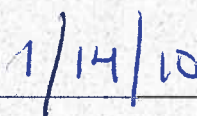
Berry Petroleum Company confirms that the Surface Owner Consultation requirements of Rule 306 have been completed or waived for the following proposed well locations.

**Well Names – Chevron 35-14D, 35-16D, 35-15D, 35-13D, 35-12D, 35-11D, 35-10D, 35-9D, will be drilled from approved well pad located in the NWSW of Section 35 Township 5 South, Range 96 West, Garfield County, Colorado.**

Road Description: Existing roadway use and new construction as required for access was previously agreed upon by all parties.

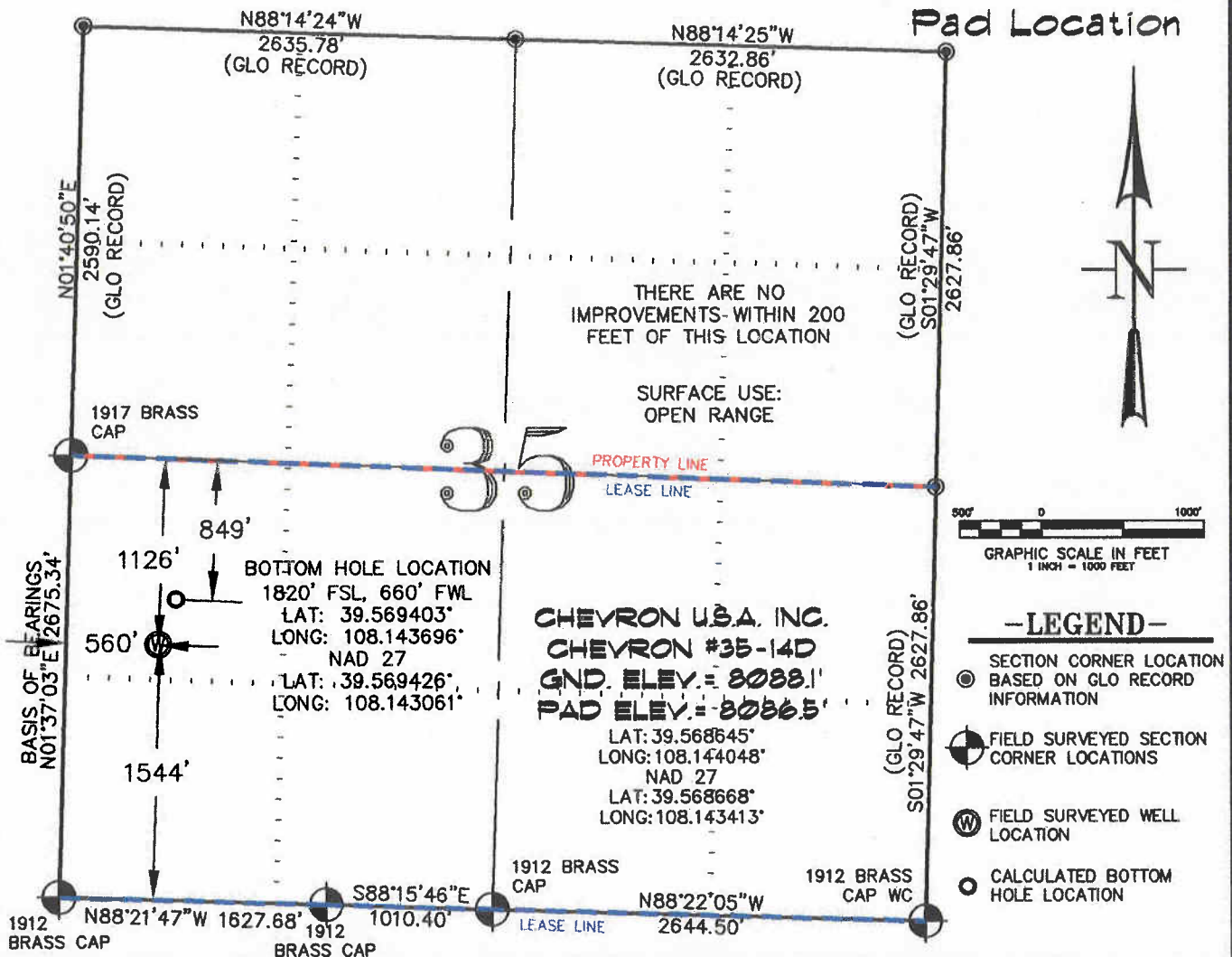
Berry Petroleum Company

  
\_\_\_\_\_  
Jerry L. Gonzalez  
Senior Landman

  
\_\_\_\_\_  
Date

## Chevron L35-596

## Pad Location



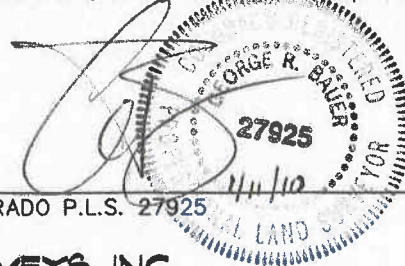
THIS WELL LOCATION PLAT WAS PREPARED FOR BERRY PETROLEUM COMPANY TO LOCATE THE CHEVRON #35-14D WELL, 1544 FEET FROM THE SOUTH LINE AND 560 FEET FROM THE WEST LINE IN THE NW1/4 SW1/4 OF SECTION 35, T. 5 S., R. 96 W. OF THE 6TH P.M. GARFIELD COUNTY, COLORADO.

## REFERENCE NOTES

- 1) T. 5 S., R. 96 W., 6TH P.M. GLO PLAT.
- 2) U.S.G.S. QUAD: CIRCLE DOT GULCH, CO
- 3) ELEVATIONS BASED ON N.A.V.D. 1988
- 4) LATITUDES AND LONGITUDES ARE BASED ON  
NAD 83, COLORADO CENTRAL ZONE.
- 5) GPS OPERATOR ROBERT WOOD, OBSERVED  
A PDOP OF 3.7.
- 6) ALL GPS OBSERVATIONS ARE IN COMPLIANCE  
WITH COGCC RULE NO. 215.
- 7) SURFACE AND BOTTOM HOLE LOCATIONS  
ARE MEASURED 90' FROM SECTION LINES.

## SURVEYOR'S CERTIFICATE

I, George R. Bauer: a Professional Land Surveyor in the State of Colorado do hereby certify that this Survey was made under my direct supervision, and that this Plat represents said Survey.



COLORADO P.L.S. 27925



**CONSTRUCTION SURVEYS, INC.**

0012 SUNRISE BLYD.

SILT, CO 81652

(970)876-5753

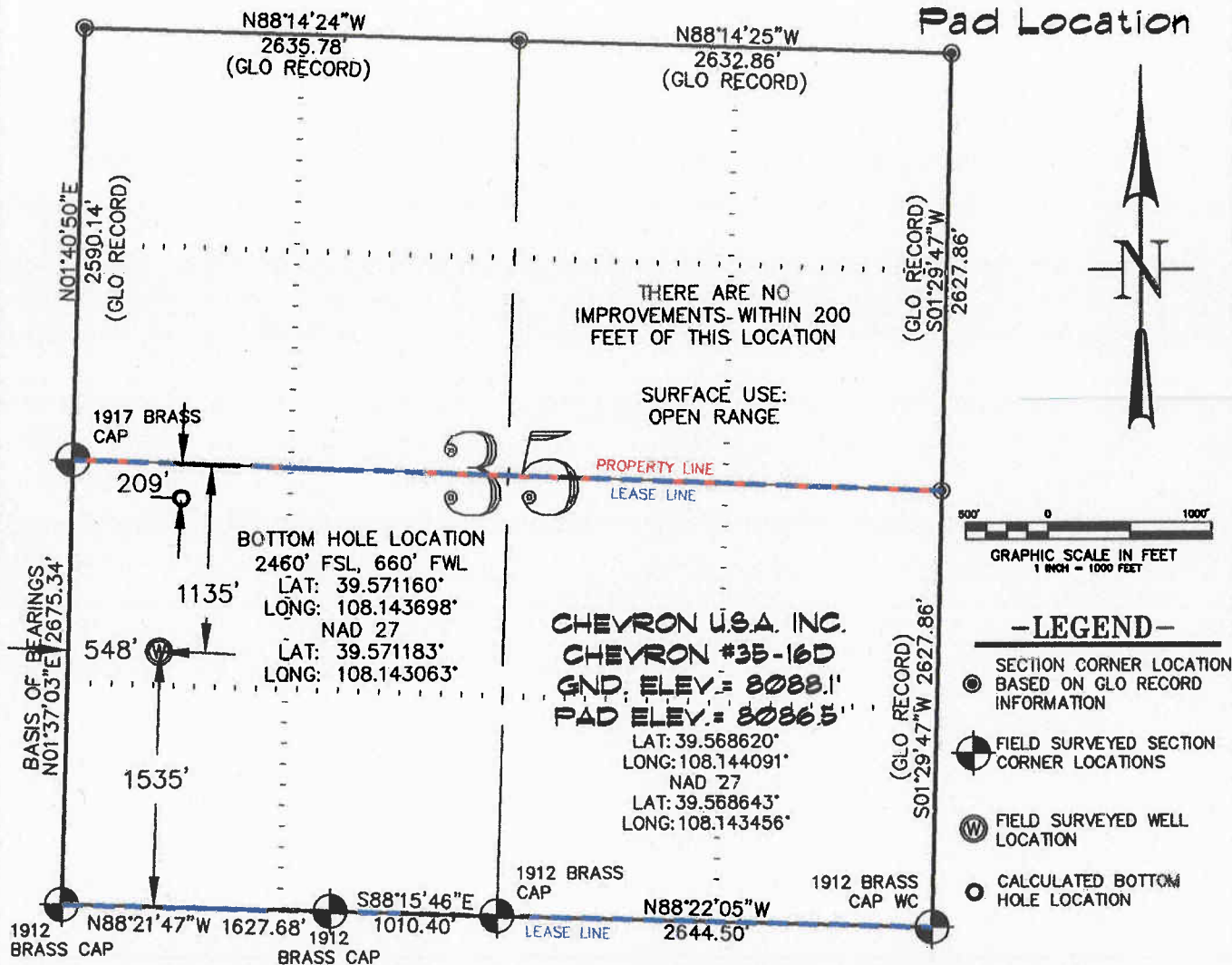
VIEW: 1F

SURVEYED: 06/12/07	SCALE: 1" = 1000'
DRAFTED: 01/07/10	DWG: BERRY/CHEVRON L35-596
CHECKED: 01/11/10	SHEET: 1 of 11



SEC. 35, T. 5 S., R. 96 W. OF THE 6TH P.M. Chevron L35-596

Pad Location



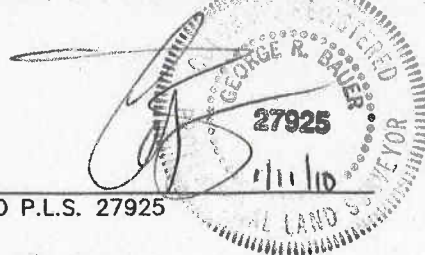
THIS WELL LOCATION PLAT WAS PREPARED FOR BERRY PETROLEUM COMPANY TO LOCATE THE CHEVRON #35-16D WELL, 1535 FEET FROM THE SOUTH LINE AND 548 FEET FROM THE WEST LINE IN THE NW1/4 SW1/4 OF SECTION 35, T. 5 S., R. 96 W. OF THE 6TH P.M. GARFIELD COUNTY, COLORADO.

REFERENCE NOTES

- 1) T. 5 S., R. 96 W., 6TH P.M. GLO PLAT.
- 2) U.S.G.S. QUAD: CIRCLE DOT GULCH, CO
- 3) ELEVATIONS BASED ON N.A.V.D. 1988
- 4) LATITUDES AND LONGITUDES ARE BASED ON NAD 83, COLORADO CENTRAL ZONE.
- 5) GPS OPERATOR ROBERT WOOD, OBSERVED A PDOP OF 3.7.
- 6) ALL GPS OBSERVATIONS ARE IN COMPLIANCE WITH COGCC RULE NO. 215.
- 7) SURFACE AND BOTTOM HOLE LOCATIONS ARE MEASURED 90° FROM SECTION LINES.

SURVEYOR'S CERTIFICATE

I, George R. Bauer: a Professional Land Surveyor in the State of Colorado do hereby certify that this Survey was made under my direct supervision, and that this Plat represents said Survey.



COLORADO P.L.S. 27925



CONSTRUCTION SURVEYS, INC.

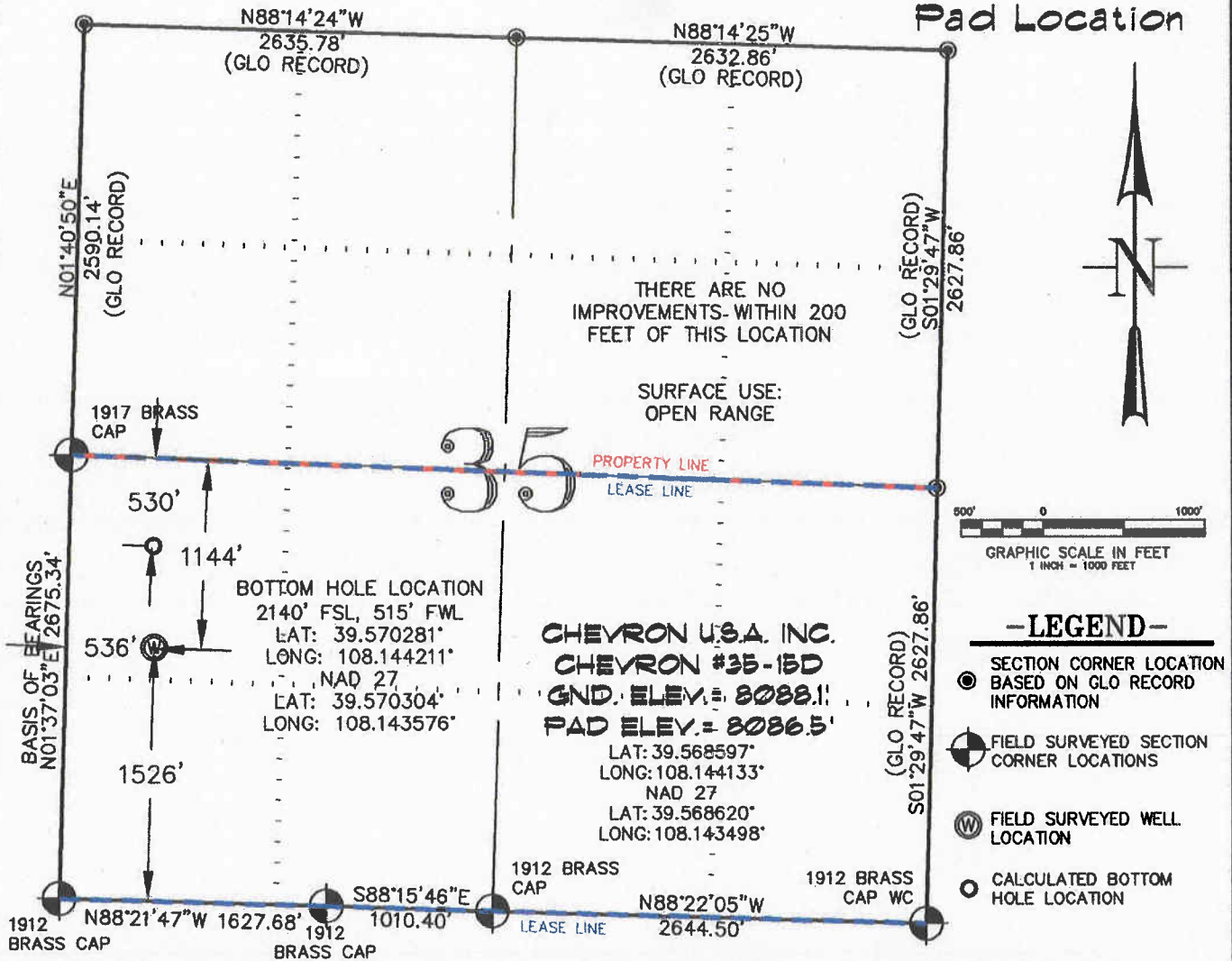
0012 SUNRISE BLVD.  
SILT, CO 81652  
(970)876-5753

VIEW: 1H

SURVEYED: 06/12/07	SCALE: 1" = 1000'
DRAFTED: 01/07/10	DWG: BERRY/CHEVRON L35-596
CHECKED: 01/11/10	SHEET: 1 of 11

SEC. 35, T. 5 S., R. 96 W. OF THE 6TH P.M. Chevron L35-596

Pad Location



THIS WELL LOCATION PLAT WAS PREPARED FOR BERRY PETROLEUM COMPANY TO LOCATE THE CHEVRON #35-15D WELL, 1526 FEET FROM THE SOUTH LINE AND 536 FEET FROM THE WEST LINE IN THE NW1/4 SW1/4 OF SECTION 35, T. 5 S., R. 96 W. OF THE 6TH P.M. GARFIELD COUNTY, COLORADO.

REFERENCE NOTES

- 1) T. 5 S., R. 96 W., 6TH P.M. GLO PLAT.
- 2) U.S.G.S. QUAD: CIRCLE DOT GULCH, CO
- 3) ELEVATIONS BASED ON N.A.V.D. 1988
- 4) LATITUDES AND LONGITUDES ARE BASED ON NAD 83, COLORADO CENTRAL ZONE.
- 5) GPS OPERATOR ROBERT WOOD, OBSERVED A PDOP OF 3.7.
- 6) ALL GPS OBSERVATIONS ARE IN COMPLIANCE WITH COGCC RULE NO. 215.
- 7) SURFACE AND BOTTOM HOLE LOCATIONS ARE MEASURED 90° FROM SECTION LINES.

SURVEYOR'S CERTIFICATE

I, George R. Bauer: a Professional Land Surveyor in the State of Colorado do hereby certify that this Survey was made under my direct supervision, and that this Plat represents said Survey.

COLORADO P.L.S. 27925



CONSTRUCTION SURVEYS, INC.  
2012 SUNRISE BLVD.  
SILT, CO 81652  
(970)876-5753

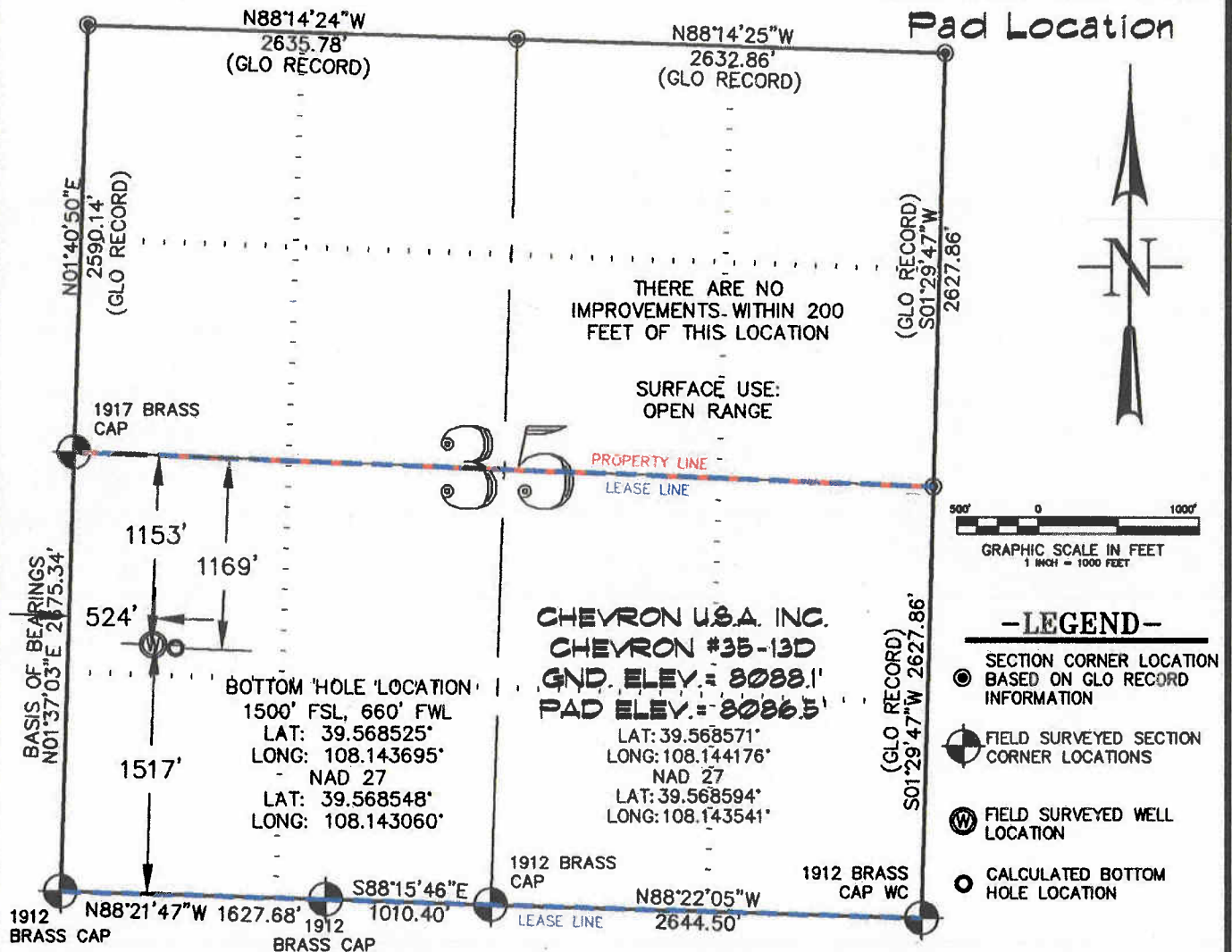
VIEW: 1G

SURVEYED: 06/12/07	SCALE: 1" = 1000'
DRAFTED: 01/07/10	DWG: BERRY/CHEVRON L35-596
CHECKED: 01/11/10	SHEET: 1 of 11



Chevron L35-596

### Pad Location



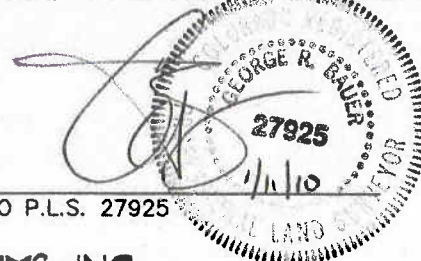
THIS WELL LOCATION PLAT WAS PREPARED FOR BERRY PETROLEUM COMPANY TO LOCATE THE CHEVRON #35-13D WELL, 1517 FEET FROM THE SOUTH LINE AND 524 FEET FROM THE WEST LINE IN THE NW1/4 SW1/4 OF SECTION 35, T. 5 S., R. 96 W. OF THE 6TH P.M. GARFIELD COUNTY, COLORADO.

## REFERENCE NOTES

- 1) T. 5 S., R. 96 W., 6TH P.M. GLO PLAT.
- 2) U.S.G.S. QUAD: CIRCLE DOT GULCH, CO
- 3) ELEVATIONS BASED ON N.A.V.D. 1988
- 4) LATITUDES AND LONGITUDES ARE BASED ON  
NAD 83, COLORADO CENTRAL ZONE.
- 5) GPS OPERATOR ROBERT WOOD, OBSERVED  
A PDOP OF 3.7.
- 6) ALL GPS OBSERVATIONS ARE IN COMPLIANCE  
WITH COGCC RULE NO. 215.
- 7) SURFACE AND BOTTOM HOLE LOCATIONS  
ARE MEASURED 90° FROM SECTION LINES.

## SURVEYOR'S CERTIFICATE

I, George R. Bauer: a Professional Land Surveyor in the State of Colorado do hereby certify that this Survey was made under my direct supervision, and that this ~~Figure~~ represents said Survey.



COLORADO P.L.S. 27925



CONSTRUCTION SURVEYS, INC.  
0012 SUNRISE BLVD.  
SILT, CO 81652  
(970) 876-5753

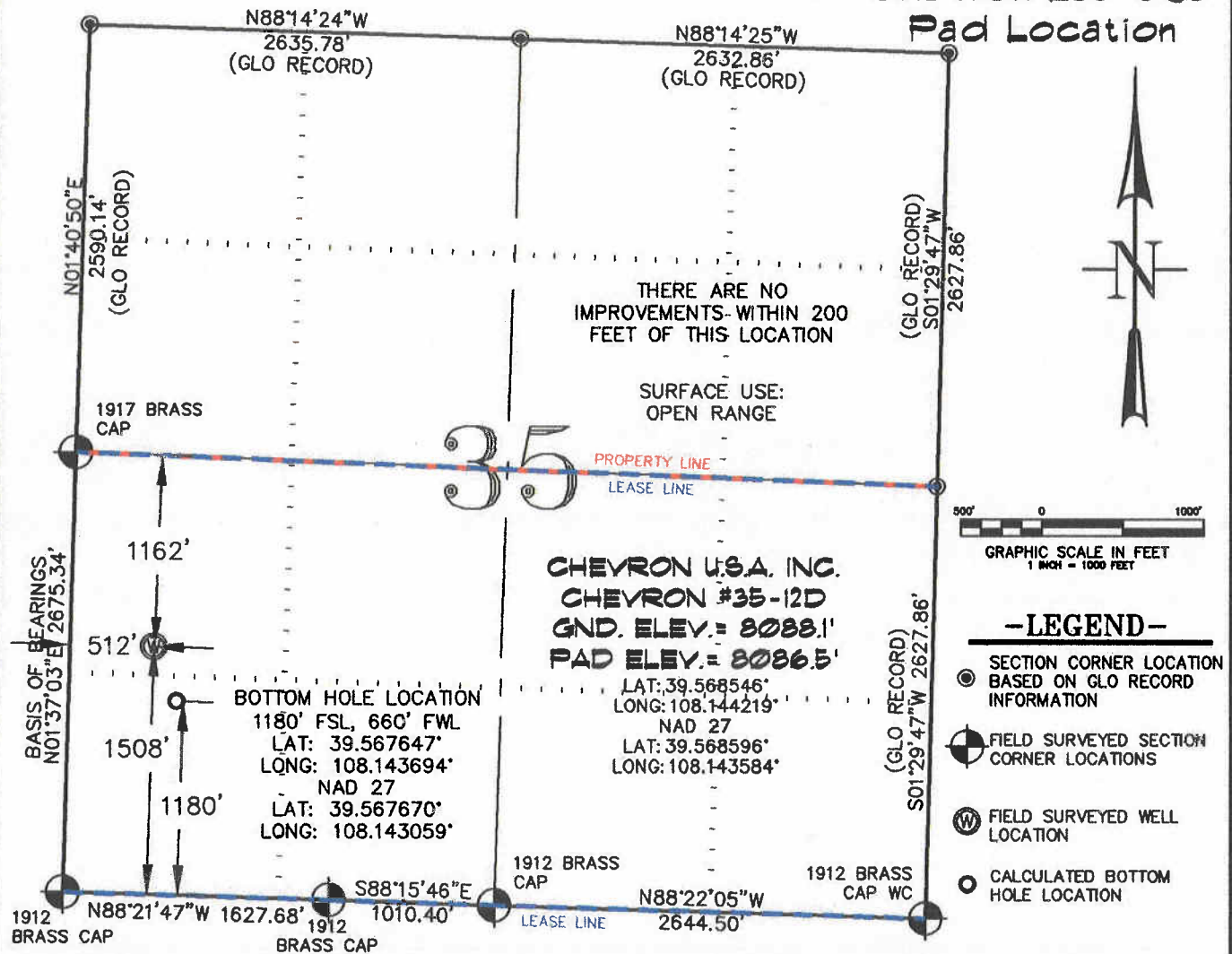
SURVEYED: 0
DRAFTED: 0
CHECKED: 0

VIEW: 1E

SURVEYED: 06/12/07	SCALE: 1" = 1000'
DRAFTED: 01/07/10	DWG. BERRY/CHEVRON L35-596
CHECKED: 01/11/10	SHEET: 1 of 11

SEC. 35, T. 5 S., R. 96 W. OF THE 6TH P.M. Chevron L35-596

Pad Location



-LEGEND-

- SECTION CORNER LOCATION BASED ON GLO RECORD INFORMATION
- FIELD SURVEYED SECTION CORNER LOCATIONS
- FIELD SURVEYED WELL LOCATION
- CALCULATED BOTTOM HOLE LOCATION

THIS WELL LOCATION PLAT WAS PREPARED FOR BERRY PETROLEUM COMPANY TO LOCATE THE CHEVRON #35-12D WELL, 1508 FEET FROM THE SOUTH LINE AND 512 FEET FROM THE WEST LINE IN THE NW1/4 SW1/4 OF SECTION 35, T. 5 S., R. 96 W. OF THE 6TH P.M. GARFIELD COUNTY, COLORADO.

REFERENCE NOTES

- 1) T. 5 S., R. 96 W., 6TH P.M. GLO PLAT.
- 2) U.S.G.S. QUAD: CIRCLE DOT GULCH, CO
- 3) ELEVATIONS BASED ON N.A.V.D. 1988
- 4) LATITUDES AND LONGITUDES ARE BASED ON NAD 83, COLORADO CENTRAL ZONE.
- 5) GPS OPERATOR ROBERT WOOD, OBSERVED A PDOP OF 3.7.
- 6) ALL GPS OBSERVATIONS ARE IN COMPLIANCE WITH COGCC RULE NO. 215.
- 7) SURFACE AND BOTTOM HOLE LOCATIONS ARE MEASURED 90° FROM SECTION LINES.

SURVEYOR'S CERTIFICATE

I, George R. Bauer: a Professional Land Surveyor in the State of Colorado do hereby certify that this Survey was made under my direct supervision, and that this Plat represents said Survey.



COLORADO P.L.S. 27925



CONSTRUCTION SURVEYS, INC.  
0012 SUNRISE BLVD.  
SILT, CO 81652  
(970)876-5753

VIEW: 1D

SURVEYED: 06/12/07	SCALE: 1" = 1000'
DRAFTED: 01/07/10	DWG: BERRY/CHEVRON L35-596
CHECKED: 01/11/10	SHEET: 1 of 11



## Chevron L35-596



- SECTION CORNER LOCATION  
BASED ON GLO RECORD  
INFORMATION
- FIELD SURVEYED SECTION  
CORNER LOCATIONS
- FIELD SURVEYED WELL  
LOCATION
- CALCULATED BOTTOM  
HOLE LOCATION

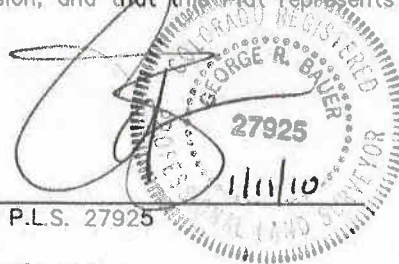
THIS WELL LOCATION PLAT WAS PREPARED FOR BERRY PETROLEUM COMPANY TO LOCATE THE CHEVRON #35-11D WELL, 1499 FEET FROM THE SOUTH LINE AND 500 FEET FROM THE WEST LINE IN THE NW1/4 SW1/4 OF SECTION 35, T. 5 S., R. 96 W. OF THE 6TH P.M. GARFIELD COUNTY, COLORADO.

## REFERENCE NOTES

- 1) T. 5 S., R. 96 W., 6TH P.M. GLO PLAT.
- 2) U.S.G.S. QUAD: CIRCLE DOT GULCH, CO
- 3) ELEVATIONS BASED ON N.A.V.D. 1988
- 4) LATITUDES AND LONGITUDES ARE BASED ON NAD 83, COLORADO CENTRAL ZONE.
- 5) GPS OPERATOR ROBERT WOOD, OBSERVED A PDOP OF 3.7.
- 6) ALL GPS OBSERVATIONS ARE IN COMPLIANCE WITH COGCC RULE NO. 215.
- 7) SURFACE AND BOTTOM HOLE LOCATIONS ARE MEASURED 90° FROM SECTION LINES.

## SURVEYOR'S CERTIFICATE

I, George R. Bauer: a Professional Land Surveyor in the State of Colorado do hereby certify that this Survey was made under my direct supervision, and that this plat represents said Survey.



COLORADO P.L.S. 27925



CONSTRUCTION SURVEYS, INC.  
0012 SUNRISE BLVD.  
SILT, CO 81652  
(970)876-5753

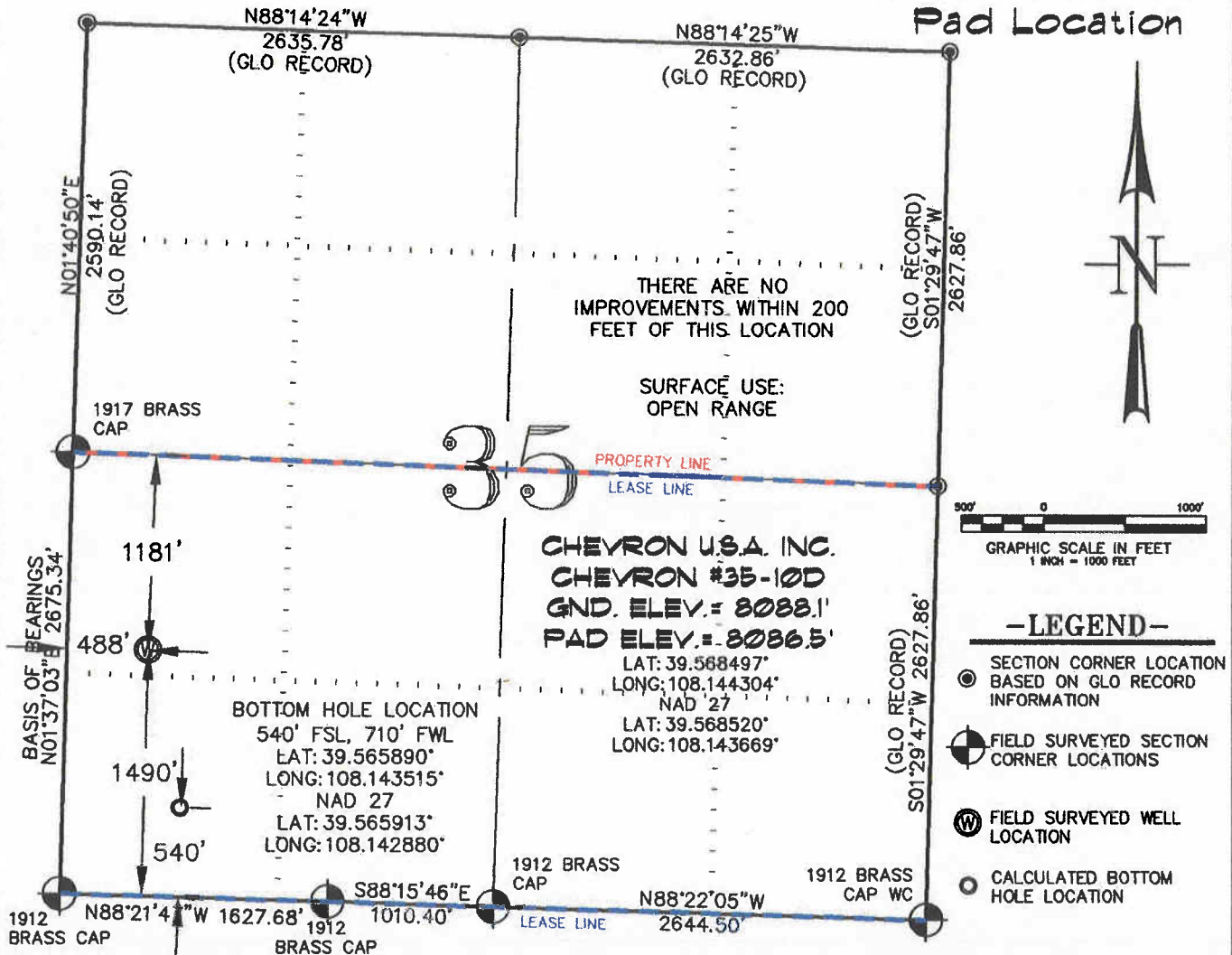
SURVEYED: 00
DRAFTED: 00
CHECKED: 00

VIEW: 1C

SURVEYED: 06/12/07	SCALE: 1" = 1000'
DRAFTED: 01/07/10	DWG: BERRY/CHEVRON L35--596
CHECKED: 01/11/10	SHEET: 1 of 11



SEC. 35, T. 5 S., R. 96 W. OF THE 6TH P.M. Chevron L35-596  
Pad Location



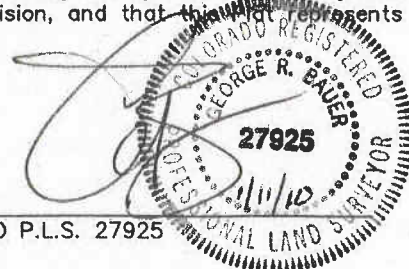
THIS WELL LOCATION PLAT WAS PREPARED FOR BERRY PETROLEUM COMPANY TO LOCATE THE CHEVRON #35-10D WELL, 1490 FEET FROM THE SOUTH LINE AND 488 FEET FROM THE WEST LINE IN THE NW1/4 SW1/4 OF SECTION 35, T. 5 S., R. 96 W. OF THE 6TH P.M. GARFIELD COUNTY, COLORADO.

REFERENCE NOTES

- 1) T. 5 S., R. 96 W., 6TH P.M. GLO PLAT.
- 2) U.S.G.S. QUAD: CIRCLE DOT GULCH, CO
- 3) ELEVATIONS BASED ON N.A.V.D. 1988
- 4) LATITUDES AND LONGITUDES ARE BASED ON NAD 83, COLORADO CENTRAL ZONE.
- 5) GPS OPERATOR ROBERT WOOD, OBSERVED A PDOP OF 3.7.
- 6) ALL GPS OBSERVATIONS ARE IN COMPLIANCE WITH COGCC RULE NO. 215.
- 7) SURFACE AND BOTTOM HOLE LOCATIONS ARE MEASURED 90° FROM SECTION LINES.

SURVEYOR'S CERTIFICATE

I, George R. Bauer: a Professional Land Surveyor in the State of Colorado do hereby certify that this Survey was made under my direct supervision, and that this plat represents said Survey.



COLORADO P.L.S. 27925

VIEW: 1B

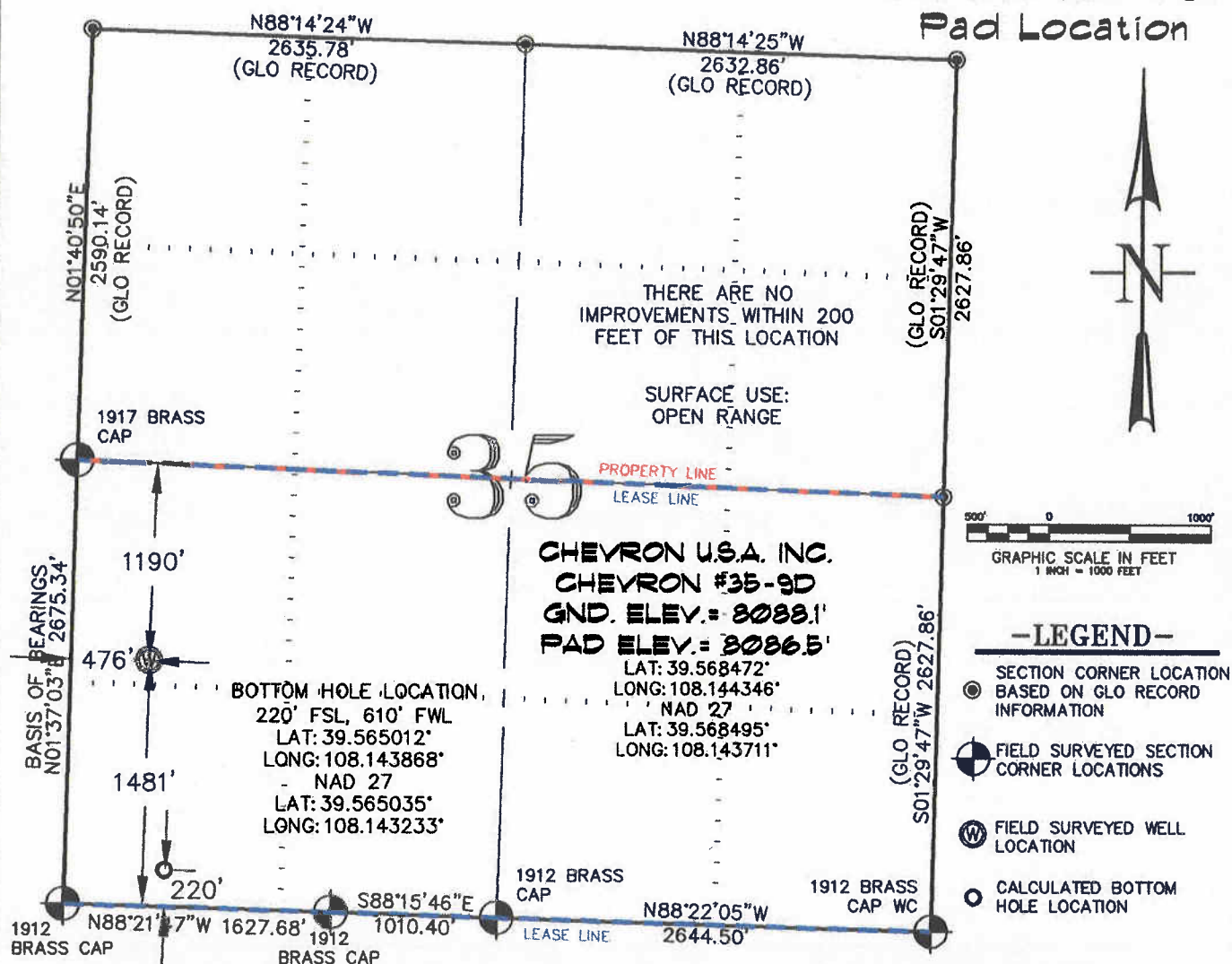


CONSTRUCTION SURVEYS, INC.  
0012 SUNRISE BLVD.  
SILT, CO 81652  
(970)876-5753

SURVEYED: 06/12/07	SCALE: 1" = 1000'
DRAFTED: 01/07/10	DWG: BERRY/CHEVRON L35-596
CHECKED: 01/11/10	SHEET: 1 of 11

Chevron L35-596

### Pad Location



THIS WELL LOCATION PLAT WAS PREPARED FOR BERRY PETROLEUM COMPANY TO LOCATE THE CHEVRON #35-9D WELL, 1481 FEET FROM THE SOUTH LINE AND 476 FEET FROM THE WEST LINE IN THE NW1/4 SW1/4 OF SECTION 35, T. 5 S., R. 96 W. OF THE 6TH P.M. GARFIELD COUNTY, COLORADO.

## REFERENCE NOTES

- 1) T. 5 S., R. 96 W., 6TH P.M. GLO PLAT.
- 2) U.S.G.S. QUAD: CIRCLE DOT GULCH, CO
- 3) ELEVATIONS BASED ON N.A.V.D. 1988
- 4) LATITUDES AND LONGITUDES ARE BASED ON NAD 83, COLORADO CENTRAL ZONE.
- 5) GPS OPERATOR ROBERT WOOD, OBSERVED A PDOP OF 3.7.
- 6) ALL GPS OBSERVATIONS ARE IN COMPLIANCE WITH COGCC RULE NO. 215.
- 7) SURFACE AND BOTTOM HOLE LOCATIONS ARE MEASURED 90° FROM SECTION LINES.

## SURVEYOR'S CERTIFICATE

I, George R. Bauer: a Professional Land Surveyor in the State of Colorado do hereby certify that this Survey was made under my direct supervision, and that this Plat represents said Survey.



COLORADO P.L.S. 27925



CONSTRUCTION SURVEYS, INC.  
0012 SUNRISE BLVD.  
SILT, CO 81652  
(970)876-5753

SURVEYED: 0
DRAFTED: 0
CHECKED: 0

VIEW: 1A

SURVEYED: 06/12/07	SCALE: 1" = 1000'
DRAFTED: 01/07/10	DWG: BERRY/CHEVRON L35-596
CHECKED: 01/11/10	SHEET: 1 of 11