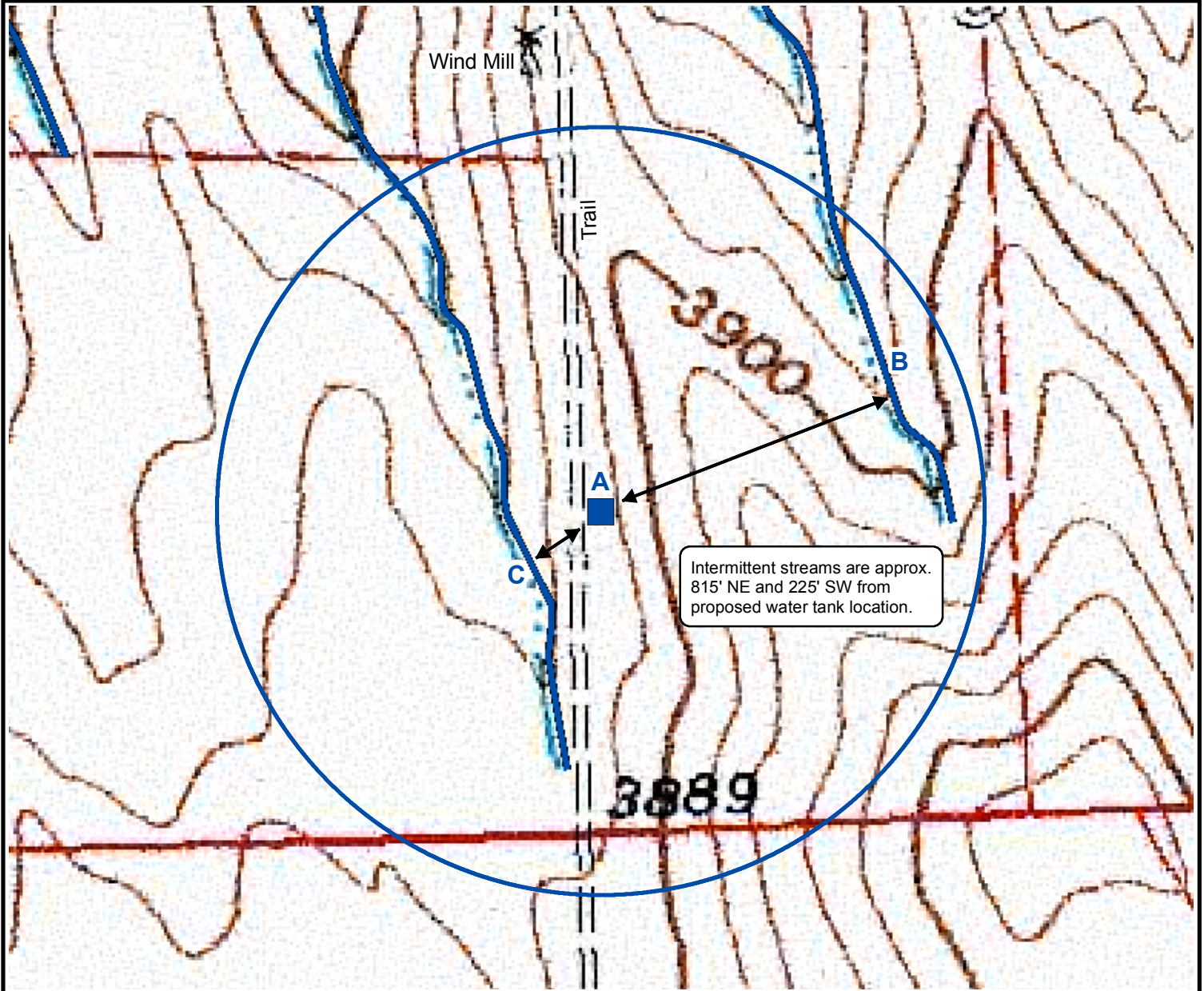
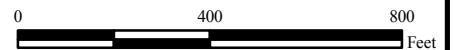


# Hydrology Map



- A. Proposed water tank
- B. Intermittent stream is approx. 815' NE.
- C. Intermittent stream is approx. 225' SW.



Legend	
<span style="color: blue;">■</span>	Proposed Water Tank for Fix & Witte 02-13
<span style="color: blue;">○</span>	1,000 Ft. Radius
<span style="color: blue;">▨</span>	Standing Bodies of Water
<span style="color: blue;">—</span>	Riparian Features

**1000Ft Radius Map**  
**FIX & WITTE 02-13**  
**Water Tank**

Surface Location: T1S R45W S2



Field Date: 11/06/09  
 Drawing Date: 01/08/10  
 Scale: 1" = 400'  
 Drafter: SC  
 Checked By: SH

USDA/NRCS, 2002  
 US Census Bureau, 2008