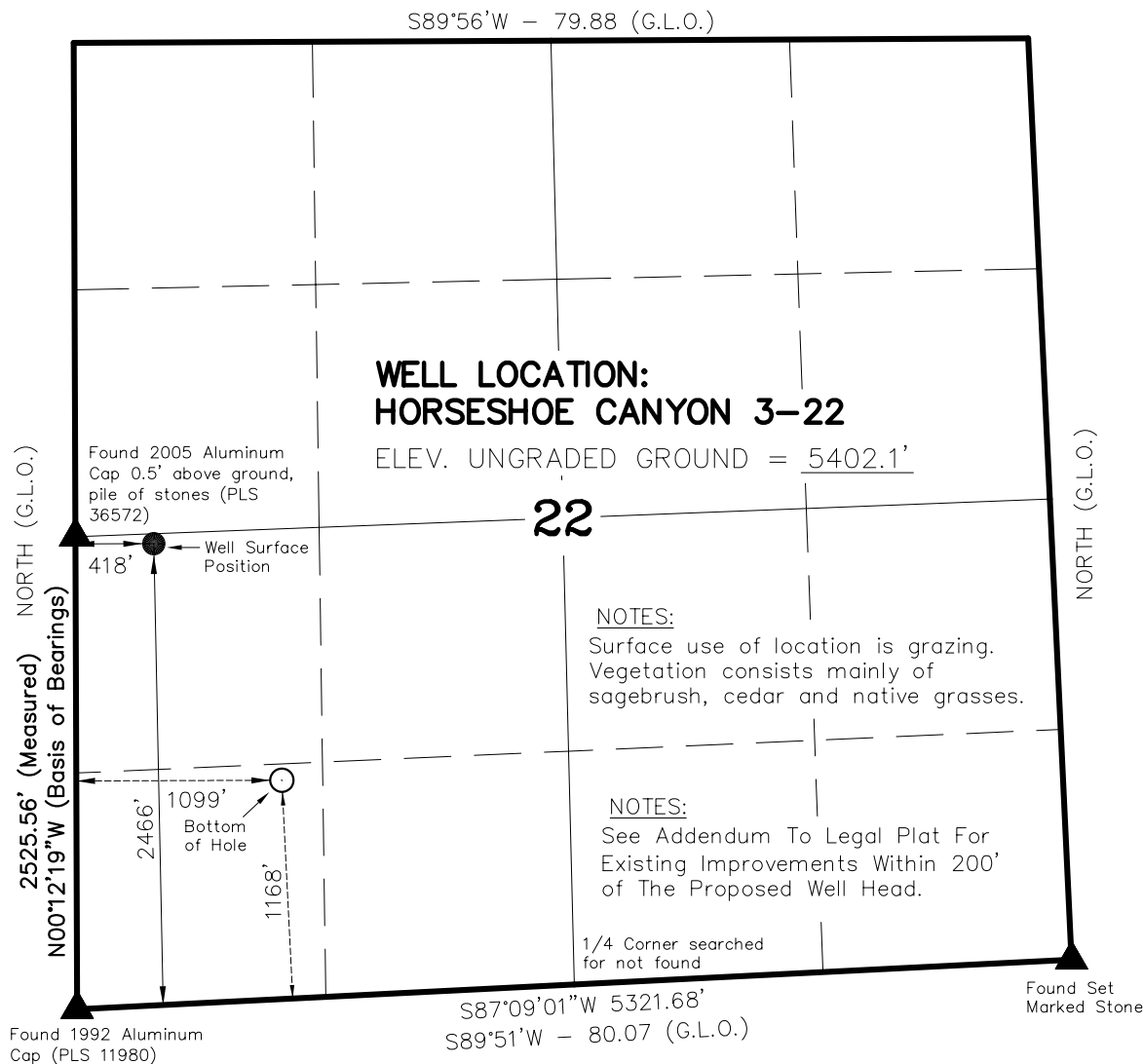


T9S, R97W, 6th P.M.

BLACK HILLS PLATEAU PRODUCTION

WELL LOCATION, HORSESHOE CANYON 3-22,  
LOCATED AS SHOWN IN THE SW 1/4 SW 1/4  
OF SECTION 22, T9S, R97W, 6th P.M.  
MESA COUNTY, COLORADO.



**WELL LOCATION:  
HORSESHOE CANYON 3-22**

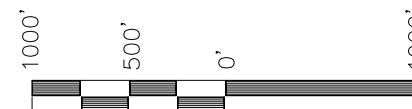
ELEV. UNGRADED GROUND = 5402.1'

**NOTES:**

Surface use of location is grazing.  
Vegetation consists mainly of  
sagebrush, cedar and native grasses.

**NOTES:**

See Addendum To Legal Plat For  
Existing Improvements Within 200'  
of The Proposed Well Head.



S C A L E

**NOTES:**

1. Well footages are measured at right angles to the Section Lines.
2. The Bottom of hole bears S28°26'24"E 1438' from the Surface Position.
3. Bearings are based on Global Positioning Satellite observations.
4. The Well Surface Location Bears S84°57'17"E 420.00' from the West 1/4 Corner of Section 22.
5. BASIS OF ELEVATION IS TRI-STATION VABM GNAT LOCATED IN THE SE 1/4 SE 1/4 OF SECTION 28, T9S, R97W, 6th P.M. THE ELEVATION OF THIS TRI-STATION IS SHOWN ON THE MESA 7.5 MIN. QUADRANGLE AS BEING 6031'.

THIS IS TO CERTIFY THAT THE ABOVE PLAT WAS  
PREPARED FROM FIELD NOTES OF ACTUAL SURVEYS  
MADE BY ME OR UNDER MY SUPERVISION, AND THAT  
THE SAME ARE TRUE AND CORRECT TO THE BEST OF  
MY KNOWLEDGE AND BELIEF.

REGISTERED LAND SURVEYOR  
REGISTRATION NO. 37982  
STATE OF COLORADO

**TIMBERLINE LAND SURVEYING, INC.**

38 WEST 100 NORTH. - VERNAL, UTAH 84078  
(435) 789-1365

DATE SURVEYED: 01-19-07	SURVEYED BY: B.J.S.	SHEET <b>2a</b> OF 11
DATE DRAWN: 02-09-07	DRAWN BY: M.W.W.	
SCALE: 1" = 1000'	Date Last Revised: 06-21-07 B.J.S.	

▲ = SECTION CORNERS LOCATED

**HORSESHOE CANYON 3-22  
(Bottom Hole) NAD 83**  
LATITUDE = 39.25512°N  
(39° 15' 18.43"N)  
LONGITUDE = 108.21015°W  
(108° 12' 36.54"W)

**HORSESHOE CANYON 3-22  
(Surface Position) NAD 83**  
LATITUDE = 39.25859°N  
(39° 15' 30.93"N)  
LONGITUDE = 108.21257°W  
(108° 12' 45.25"W)  
Operator: Brock Slaugh / PDOP = 3.1