

Steil Surveying Services, LLC

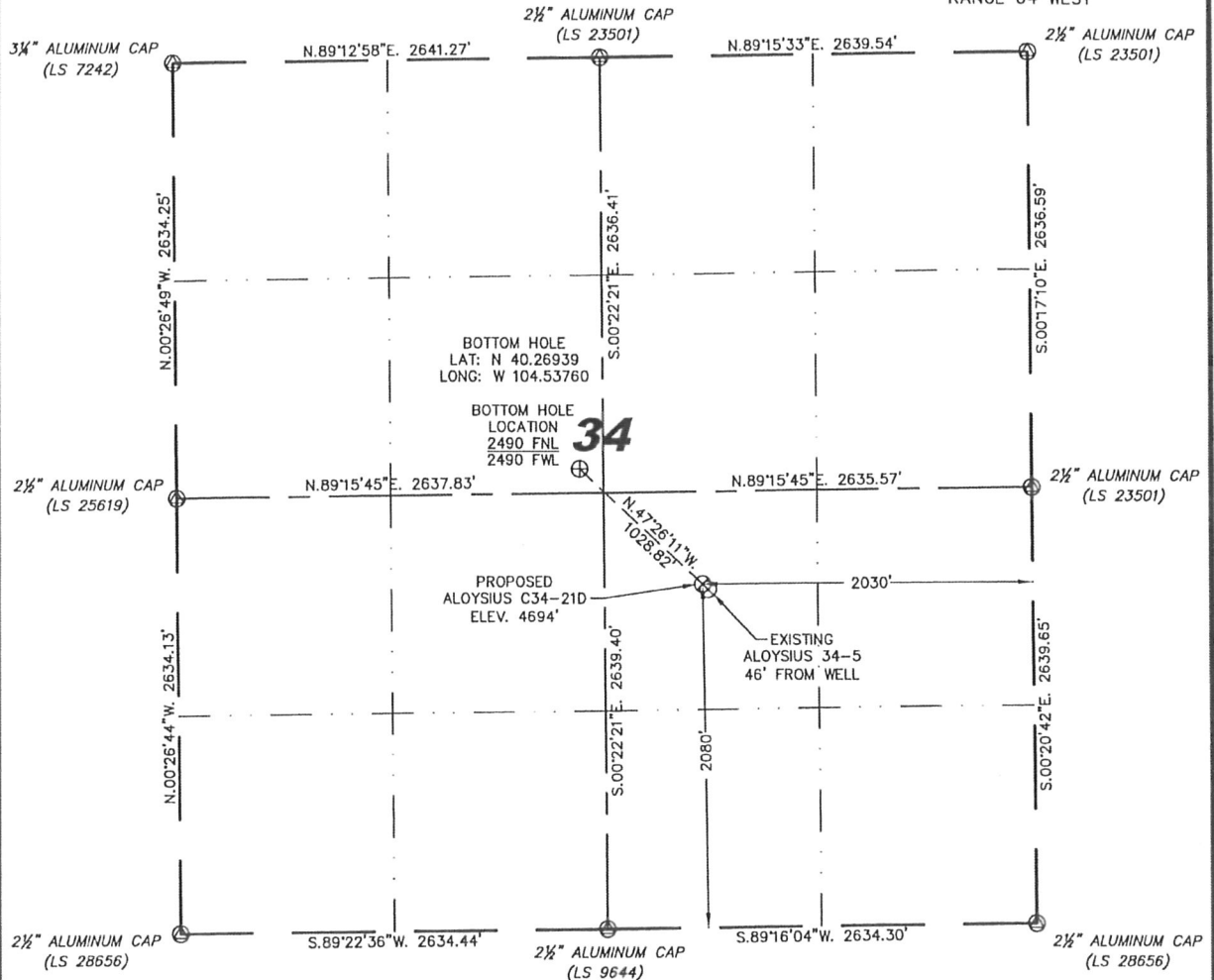
1102 West 19th Street P.O. BOX 2073

Cheyenne, Wyoming 82009

WELL LOCATION CERTIFICATE

THIS MAP DOES NOT REPRESENT A BOUNDARY SURVEY

SECTION 34
TOWNSHIP 4 NORTH
RANGE 64 WEST



0 1000

Scale: 1" = 1000'

IN ACCORDANCE WITH A REQUEST FROM ERIK VAN DECAR - NOBLE ENERGY INC, STEIL SURVEYING SERVICES, LLC HAS DETERMINED THE LOCATION OF THE ALOYSIUS C34-21D WELL TO BE 2080' FSL, 2030' FEL, AS MEASURED AT NINETY (90) DEGREES FROM THE SECTION LINES, SECTION 34, TOWNSHIP 4 NORTH, RANGE 64 WEST, 6TH PRINCIPLE MERIDIAN, WELD COUNTY, COLORADO.

I HEREBY CERTIFY THAT THIS WELL LOCATION CERTIFICATE WAS PREPARED BY ME, OR UNDER MY DIRECT SUPERVISION, THAT THE FIELD WORK WAS COMPLETED ON 09/16/2009, FOR AND ON BEHALF OF NOBLE ENERGY INC, THAT IT IS NOT A LAND SURVEY PLAT OR AN IMPROVEMENT SURVEY PLAT, AND THAT IT IS NOT TO BE RELIED UPON FOR ESTABLISHMENT OF FENCE, BUILDING, OR OTHER FUTURE IMPROVEMENT LINES.

NOTES:

- 1) BASIS OF BEARINGS FOR THIS MAP ARE BASED UPON GPS OBSERVATIONS MADE ON 09/15/2009 BETWEEN MONUMENTS LOCATED AT THE SOUTHEAST SECTION CORNER AND THE NORTHEAST SECTION CORNER OF SAID SECTION AND WITH ALL BEARINGS SHOWN HEREON RELATIVE THERETO.
- 2) ELEVATIONS ARE BASED UPON NGS OPUS SOLUTION NAVD 88 DATUM.
- 3) THE NEAREST EXISTING WELL IS: ALOYSIUS 34-5, 46' SOUTHEAST.
- 4) SEE VISIBLE IMPROVEMENTS EXHIBIT FOR ALL IMPROVEMENTS WITHIN 400'.
- 5) THE LOCATION FALLS IN CROP LAND.

LATITUDE & LONGITUDE (NAD 83 SURFACE HOLE):
LATITUDE: N 40.26746°
LONGITUDE: W 104.53491°
PDOP: 2.1
QUARTER-QUARTER: NW/4SE/4
NEAREST PROPERTY LINE: 559' TO THE NORTH

LEGEND

- ⊙ FOUND SURVEY MONUMENT PER MONUMENT RECORD - EXCEPTIONS NOTED.
- (C) CALCULATED DIMENSION

NOTICE: According to Colorado law you MUST commence any legal action based upon any defect in this W.L.C. within three years after you first discover such defect. In no event may any action based upon any defect in this W.L.C. be commenced more than ten years from this date of the certification shown herein.

David C. Holmes
Professional Land Surveyor Registration No. 32828
State of Colorado

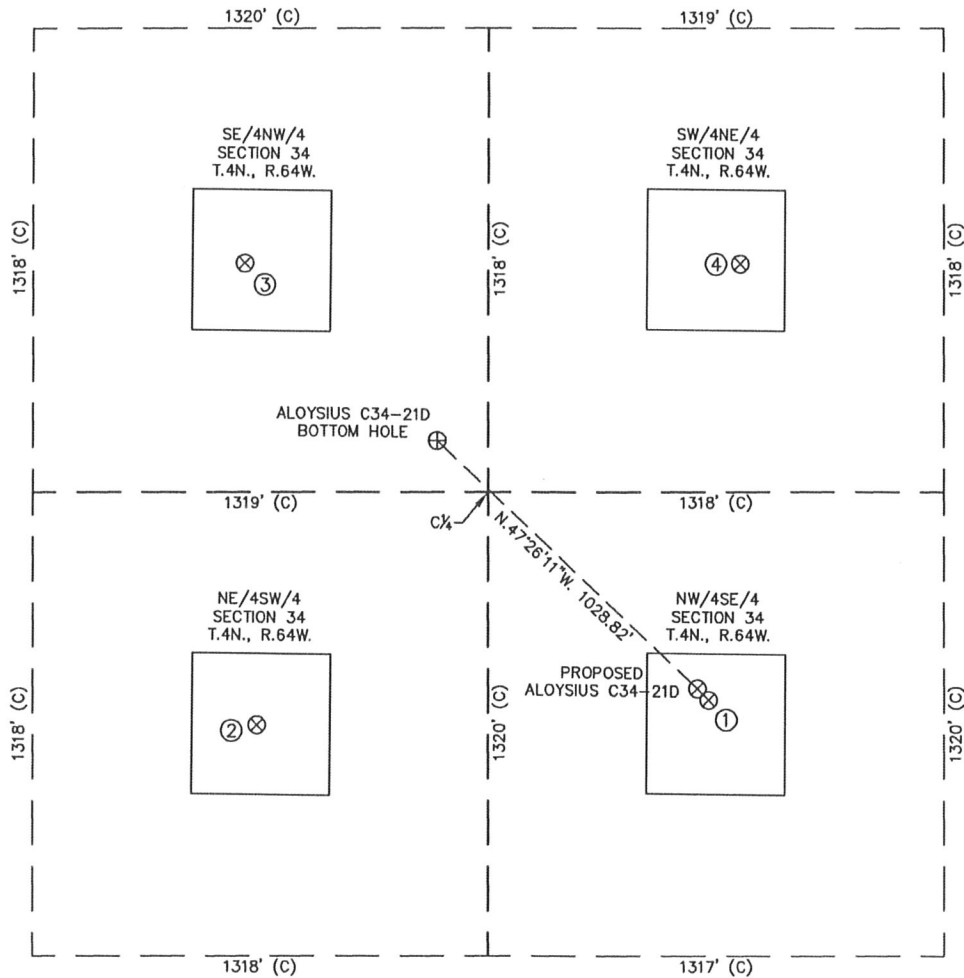
JOB #: 09086



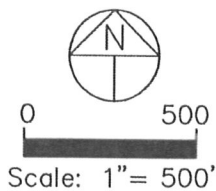
Completed 09/18/2009

SITE SKETCH - ALOYSIUS C34-21D

SECTION 34
TOWNSHIP 4 NORTH
RANGE 64 WEST



| ① | ② | ③ | ④ |
|---|--|---|--|
| ALOYSIUS 34-5 NW/SE SEC. 34 2047' FSL 1997' FEL EL 4694' N 40.26737 W 104.53479 PDOP 2.5 | ALOYSIUS C34-11 NE/SW SEC. 34 1975' FSL 1967' FWL EL 4695' N 40.26717 W 104.53948 PDOP 3.5 | ALOYSIUS 34-4 SE/NW SEC. 34 1986' FNL 1931' FWL EL 4692' N 40.27077 W 104.53959 PDOP 2.7 | POLLACK HADDIX 34-1 SW/NE SEC. 34 1989' FNL 1906' FEL EL 4690' N 40.27077 W 104.53444 PDOP 1.9 |



- NOTES:
- 1) THIS SKETCH DOES NOT REPRESENT A BOUNDARY SURVEY.
 - 2) THE DATUM FOR THE LATITUDES AND LONGITUDES ON THIS SKETCH IS NAD83.