

Denver Division- Colorado

**DJ - Hereford Ranch
CRITTER CREEK 9-15H
9-15H
Original Wellbore**

Plan: APD Directional Plan

Standard Planning Report

13 December, 2009

EOG Resources Inc

Planning Report

Database: EDM
Company: Denver Division- Colorado
Project: DJ - Hereford Ranch
Site: CRITTER CREEK 9-15H
Well: 9-15H
Wellbore: Original Wellbore
Design: APD Directional Plan

Local Co-ordinate Reference: Well 9-15H
TVD Reference: RIG @ 5243.00ft (TBD)
MD Reference: RIG @ 5243.00ft (TBD)
North Reference: True
Survey Calculation Method: Minimum Curvature

Project DJ - Hereford Ranch, Weld County

Map System: US State Plane 1927 (Exact solution)
Geo Datum: NAD 1927 (NADCON CONUS)
Map Zone: Colorado North 501

System Datum: Mean Sea Level

Site CRITTER CREEK 9-15H

Site Position:
From: Map
Position Uncertainty: 0.00 ft
Northing: 578,630.48 ft
Eastng: 2,300,890.93 ft
Slot Radius: "
Latitude: 40° 54' 59.999 N
Longitude: 104° 24' 40.847 W
Grid Convergence: 0.70 deg

Well 9-15H

Well Position +N/-S 0.00 ft
Well Position +E/-W 0.00 ft
Position Uncertainty 0.00 ft
Northing: 578,630.48 ft
Eastng: 2,300,890.93 ft
Wellhead Elevation: ft
Latitude: 40° 54' 59.999 N
Longitude: 104° 24' 40.847 W
Ground Level: 5,226.00 ft

Wellbore Original Wellbore

Magnetics	Model Name	Sample Date	Declination (deg)	Dip Angle (deg)	Field Strength (nT)
	IGRF200510	12/13/2009	8.88	67.58	53,611

Design APD Directional Plan

Audit Notes:

Version:
Phase: PROTOTYPE
Tie On Depth: 0.00

Vertical Section:	Depth From (TVD) (ft)	+N/-S (ft)	+E/-W (ft)	Direction (deg)
	0.00	0.00	0.00	319.83

Plan Sections

Measured Depth (ft)	Inclination (deg)	Azimuth (deg)	Vertical Depth (ft)	+N/-S (ft)	+E/-W (ft)	Dogleg Rate (?/100ft)	Bulld Rate (?/100ft)	Turn Rate (?/100ft)	TFO (deg)	Target
0.00	0.00	0.00	0.00	0.00	0.00	0.00	0.00	0.00	0.00	
6,802.50	0.00	0.00	6,802.50	0.00	0.00	0.00	0.00	0.00	0.00	KOP (CC 9-15H)
7,552.56	90.00	315.64	7,280.00	341.41	-333.83	12.00	12.00	0.00	-44.36	ICP (CC 9-15H)
10,919.84	90.00	315.64	7,280.00	2,749.00	-2,688.00	0.00	0.00	0.00	0.00	TARGET 1 (CC 9-1
11,665.53	90.00	334.29	7,280.00	3,356.87	-3,114.21	2.50	0.00	2.50	90.00	
12,522.89	90.00	334.29	7,280.00	4,129.33	-3,486.21	0.00	0.00	0.00	0.00	BHL (CC 9-15H)

EOG Resources Inc

Planning Report

Database: EDM
Company: Denver Division- Colorado
Project: DJ - Hereford Ranch
Site: CRITTER CREEK 9-15H
Well: 9-15H
Wellbore: Original Wellbore
Design: APD Directional Plan

Local Co-ordinate Reference: Well 9-15H
TVD Reference: RIG @ 5243.00ft (TBD)
MD Reference: RIG @ 5243.00ft (TBD)
North Reference: True
Survey Calculation Method: Minimum Curvature

Planned Survey

Measured Depth (ft)	Inclination (deg)	Azimuth (deg)	Vertical Depth (ft)	+N/-S (ft)	+E/-W (ft)	Vertical Section (ft)	Dogleg Rate (?/100ft)	Build Rate (?/100ft)	Turn Rate (?/100ft)
0.00	0.00	0.00	0.00	0.00	0.00	0.00	0.00	0.00	0.00
1,350.00	0.00	0.00	1,350.00	0.00	0.00	0.00	0.00	0.00	0.00
Surf. Casing									
6,802.50	0.00	0.00	6,802.50	0.00	0.00	0.00	0.00	0.00	0.00
KOP (CC 9-15H)									
7,552.56	90.00	315.64	7,280.00	341.41	-333.83	476.23	12.00	12.00	0.00
Intermed. Casing - ICP (CC 9-15H)									
10,919.84	90.00	315.64	7,280.00	2,749.00	-2,688.00	3,834.53	0.00	0.00	0.00
TARGET 1 (CC 9-15H)									
11,665.53	90.00	334.29	7,280.00	3,356.87	-3,114.21	4,573.96	2.50	0.00	2.50
12,522.89	90.00	334.29	7,280.00	4,129.33	-3,486.21	5,404.17	0.00	0.00	0.00
BHL (CC 9-15H)									

Targets

Target Name - hit/miss target - Shape	Dip Angle (deg)	Dip Dir. (deg)	TVD (ft)	+N/-S (ft)	+E/-W (ft)	Northing (ft)	Easting (ft)	Latitude	Longitude
KOP (CC 9-15H) - plan hits target center - Point	0.00	0.00	6,802.50	0.00	0.00	578,630.48	2,300,890.93	40° 54' 59.999 N	104° 24' 40.847 W
ICP (CC 9-15H) - plan hits target center - Point	0.00	0.00	7,280.00	341.41	-333.83	578,967.76	2,300,552.93	40° 55' 3.372 N	104° 24' 45.195 W
TARGET 1 (CC 9-15H) - plan hits target center - Point	0.00	0.00	7,280.00	2,749.00	-2,688.00	581,346.26	2,298,169.39	40° 55' 27.159 N	104° 25' 15.861 W
BHL (CC 9-15H) - plan hits target center - Point	0.00	0.00	7,280.00	4,129.33	-3,486.21	582,716.68	2,297,354.29	40° 55' 40.797 N	104° 25' 26.262 W

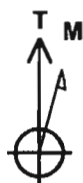
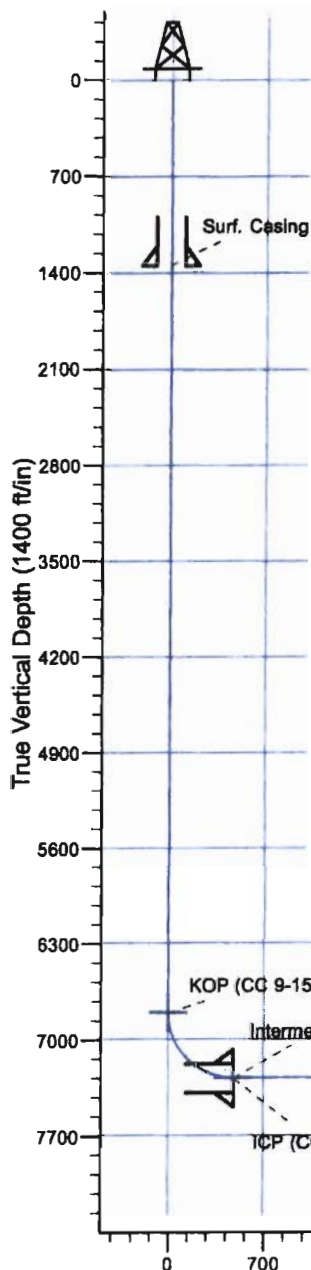
Casing Points

Measured Depth (ft)	Vertical Depth (ft)	Name	Casing Diameter (")	Hole Diameter (")
1,350.00	1,350.00	Surf. Casing	9-5/8	13-1/2
7,552.56	7,280.00	Intermed. Casing	7	8-3/4
12,522.89	7,280.00	Prod. Liner	4-1/2	6-1/4

CRITTER CREEK 9-15H

SEC. 15-T11N-R63W

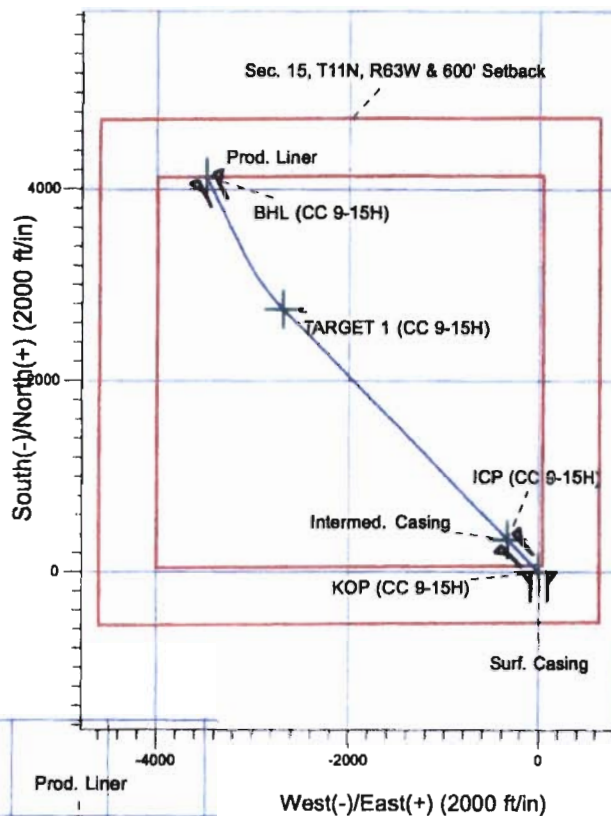
WELD COUNTY, CO



Azimuths to True North
Magnetic North: 8.88°
Magnetic Field
Strength: 53810.6nT
Dip Angle: 67.58°
Date: 12/13/2009
Model: IGRF200510

Vertical Section at 319.83deg (1400 ft/in)

Surface Location			
NAD 1927 (NADCON CONUS) Colorado North 501			
Ground Elevation: 5226.00 RIG @ 5243.00ft (TBD)			
Northing	Easting	Latitude	Longitude
578630.48	2300890.93	40° 54' 59.999 N	104° 24' 40.847 W



Project: DJ - Hereford Ranch
Site: CRITTER CREEK 9-15H
Well: 9-15H
Plan: APD Directional Plan

SECTION DETAILS

Sec	MD	Inc	Azi	TVD	+N/-S	+E/-W	DLeg	TFace	VSec	Target
1	0.00	0.00	0.00	0.00	0.00	0.00	0.00	0.00	0.00	
2	6802.50	0.00	0.00	6802.50	0.00	0.00	0.00	0.00	0.00	KOP (CC 9-15H)
3	7552.56	90.00	315.64	7280.00	341.41	-333.83	12.00	-44.36	476.23	ICP (CC 9-15H)
4	10919.84	90.00	315.64	7280.00	2749.00	-2688.00	0.00	0.00	3834.53	TARGET 1 (CC 9-15H)
5	11665.53	90.00	334.29	7280.00	3356.87	-3114.21	2.50	90.00	4573.96	
6	12522.89	90.00	334.29	7280.00	4129.33	-3486.21	0.00	0.00	5404.17	BHL (CC 9-15H)

TARGET DETAILS

Name	TVD	+N/-S	+E/-W	Northng	Easting	Latitude	Longitude	Shape
KOP (CC 9-15H)	6802.50	0.00	0.00	578630.48	2300890.93	40° 54' 59.999 N	104° 24' 40.847 W	Point
BHL (CC 9-15H)	7280.00	4129.33	-3486.21	582716.68	2297354.29	40° 55' 40.797 N	104° 25' 26.262 W	Point
ICP (CC 9-15H)	7280.00	341.41	-333.83	578967.76	2300552.93	40° 55' 3.372 N	104° 24' 45.195 W	Point
TARGET 1 (CC 9-15H)	7280.00	2749.00	-2688.00	581346.26	2298169.39	40° 55' 27.159 N	104° 25' 15.861 W	Point