

# EOG RESOURCES, INC.

T11N, R63W, 6th P.M.

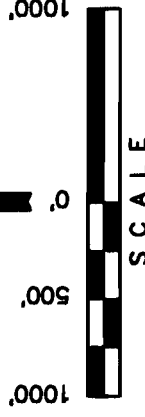
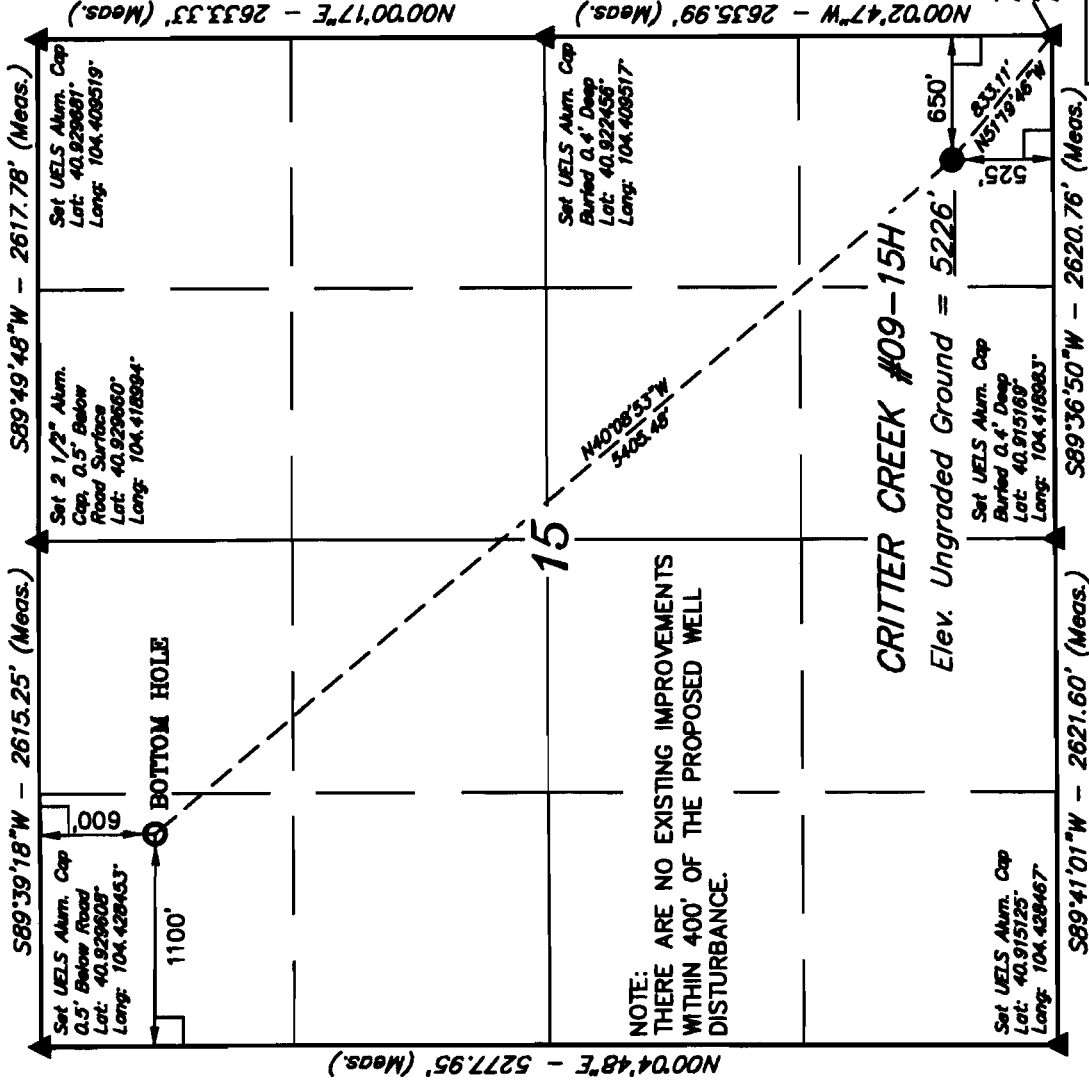
Well location, CRITTER CREEK #09-15H, located as shown in the SE 1/4 SE 1/4 of Section 15, T11N, R63W, 6th P.M., Weld County, Colorado.

## BASIS OF ELEVATION

SPOT ELEVATION AT THE NORTHEAST CORNER OF SECTION 15, T11N, R63W, 6th P.M. TAKEN FROM THE HEREFORD, QUADRANGLE, COLORADO, WELD COUNTY, 7.5 MINUTE QUAD (TOPOGRAPHIC MAP) PUBLISHED BY THE UNITED STATES DEPARTMENT OF THE INTERIOR, GEOLOGICAL SURVEY. SAID ELEVATION IS MARKED AS BEING 5352 FEET.

## BASIS OF BEARINGS

BASIS OF BEARINGS IS A G.P.S. OBSERVATION.



## CERTIFICATE

THIS IS TO CERTIFY THAT THE ABOVE PLATS WERE PREPARED FROM FIELD NOTES OF ACTUAL SURVEYS MADE BY A REGISTERED LAND SURVEYOR UNDER MY SUPERVISION AND THAT THE SAME ARE TRUE AND CORRECT TO THE BEST OF MY KNOWLEDGE AND BELIEF.

REGISTERED LAND SURVEYOR  
STATE OF COLORADO  
J. L. [Signature]  
104.408508

## UTAH ENGINEERING & LAND SURVEYING

85 SOUTH 200 EAST - VERNAL, UTAH 84078  
(435) 789-1017

SCALE	1" = 1000'	DATE SURVEYED:	11-18-09	DATE DRAWN:	12-06-09
PARTY	A.F. K.D. D.R.B.	REFERENCES	G.L.O. PLAT		
WEATHER	COLD	FILE			
					EOG RESOURCES, INC.

## LEGEND:

- = 90° SYMBOL
- = PROPOSED WELL HEAD.
- ▲ = SECTION CORNERS LOCATED.

PDOP = 1.9	
NAD 83 (TARGET BOTTOM HOLE)	NAD 83 (SURFACE LOCATION)
LATITUDE = 40°55'40.73" (40.927961)	LATITUDE = 40°54'59.94" (40.918650)
LONGITUDE = 104°25'28.11" (104.424475)	LONGITUDE = 104°24'42.89" (104.411858)
NAD 27 (TARGET BOTTOM HOLE)	NAD 27 (SURFACE LOCATION)
LATITUDE = 40°55'40.80" (40.928000)	LATITUDE = 40°54'40.00" (40.916667)
LONGITUDE = 104°25'28.26" (104.423961)	LONGITUDE = 104°24'40.85" (104.411347)
STATE PLANE NAD 83 (COLORADO NORTH)	STATE PLANE NAD 83 (COLORADO NORTH)
TARGET BOTTOM HOLE:	SURFACE LOCATION:
N: 1582716.754	N: 1578632.478
E: 3287204.867	E: 3300741.548
STATE PLANE NAD 27 (COLORADO NORTH)	STATE PLANE NAD 27 (COLORADO NORTH)
TARGET BOTTOM HOLE:	SURFACE LOCATION:
N: 582716.683	N: 578630.476
E: 2287354.295	E: 2300890.933