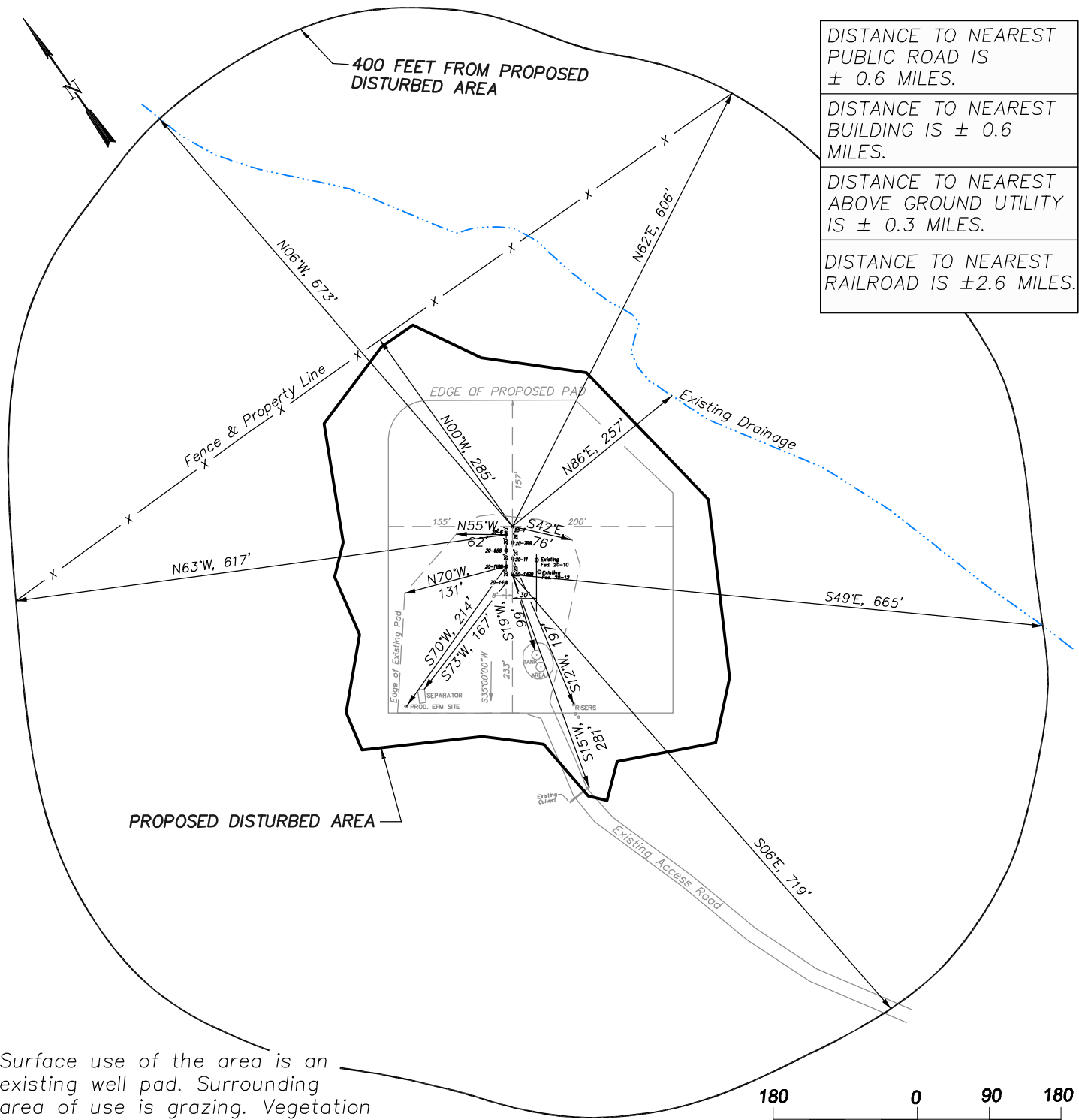
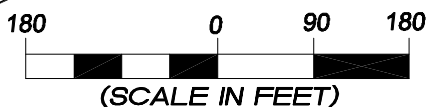


**EnCana Oil & Gas (USA) Inc.**  
**ADDENDUM TO LEGAL PLATS FOR**  
**PN-20 Well Pad**  
**SE1/4 SW1/4, SECTION 20, T 7 S, R 95 W, 6th P.M.**

DISTANCE TO NEAREST PUBLIC ROAD IS ± 0.6 MILES.  
DISTANCE TO NEAREST BUILDING IS ± 0.6 MILES.  
DISTANCE TO NEAREST ABOVE GROUND UTILITY IS ± 0.3 MILES.  
DISTANCE TO NEAREST RAILROAD IS ±2.6 MILES.



Surface use of the area is an existing well pad. Surrounding area of use is grazing. Vegetation consists mainly of sage brush, oak brush and native grasses.



906 Main Street  
Evanston, Wyoming 82930  
Phone No. (307) 789-4545

<b>Addendum</b>		<b>Scale: 1" = 180'</b>	<b>SHEET</b> <b>1i</b> <b>OF 10</b>
<b>Project No.</b>	<b>05-04-73</b>	<b>Date Surveyed: 6/03/08</b>	
<b>Date Drawn:</b>	<b>8/31/09</b>	<b>Latest Revision Date: 1/18/10</b>	

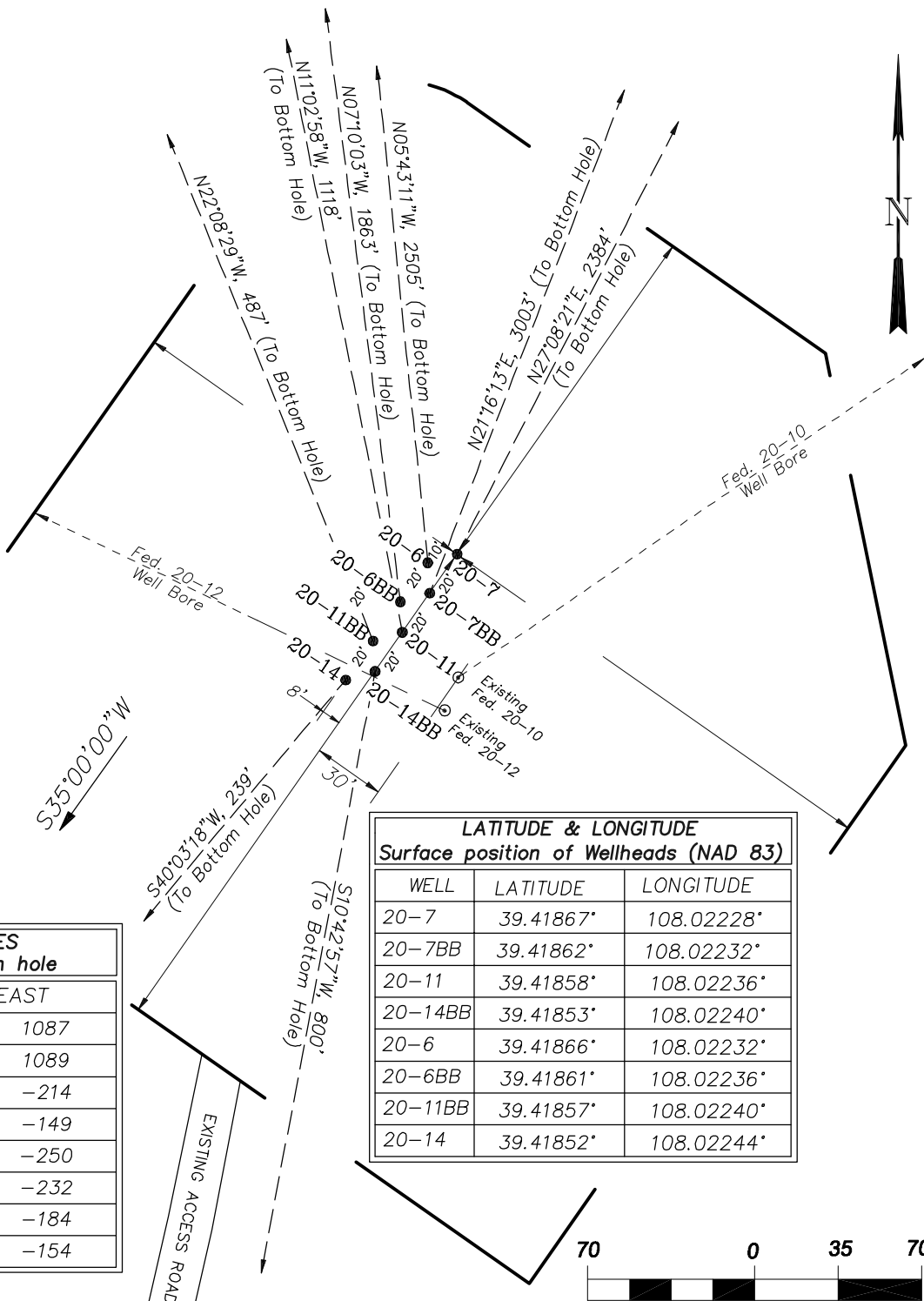
**EnCana Oil & Gas (USA) Inc.**  
**Well Pad (PN-20)**  
**Section 20, T7S, R95W, 6th P.M.**  
**WELL PAD INTERFERENCE PLAT**

**TOP HOLE FOOTAGES**

FED. GARDNER 20-7 (PN-20)  
 1083' FSL & 2187' FWL  
 FED. GARDNER 20-7BB (PN-20)  
 1066' FSL & 2175' FWL  
 FED. 20-11 (PN-20)  
 1050' FSL & 2163' FWL  
 FED. 20-14BB (PN-20)  
 1034' FSL & 2151' FWL  
 FED. GARDNER 20-6 (PN-20)  
 1079' FSL & 2174' FWL  
 FED. GARDNER 20-6BB (PN-20)  
 1063' FSL & 2163' FWL  
 FED. 20-11BB (PN-20)  
 1047' FSL & 2151' FWL  
 FED. 20-14 (PN-20)  
 1031' FSL & 2139' FWL

**BOTTOM HOLE FOOTAGES**

FED. GARDNER 20-7 (PN-20)  
 2180' FNL & 1980' FEL SEC. 20  
 FED. GARDNER 20-7BB (PN-20)  
 1520' FNL & 1980' FEL SEC. 20  
 FED. 20-11 (PN-20)  
 2150' FSL & 1980' FWL SEC. 20  
 FED. 20-14BB (PN-20)  
 250' FSL & 1980' FWL SEC. 20  
 FED. GARDNER 20-6 (PN-20)  
 1810' FNL & 1980' FWL SEC. 20  
 FED. GARDNER 20-6BB (PN-20)  
 2470' FNL & 1980' FWL SEC. 20  
 FED. 20-11BB (PN-20)  
 1500' FSL & 1980' FWL SEC. 20  
 FED. 20-14 (PN-20)  
 850' FSL & 1980' FWL SEC. 20



RELATIVE COORDINATES From top hole to bottom hole		
WELL	NORTH	EAST
20-7	2122	1087
20-7BB	2798	1089
20-11	1097	-214
20-14BB	-786	-149
20-6	2493	-250
20-6BB	1848	-232
20-11BB	451	-184
20-14	-183	-154

LATITUDE & LONGITUDE Surface position of Wellheads (NAD 83)		
WELL	LATITUDE	LONGITUDE
20-7	39.41867°	108.02228°
20-7BB	39.41862°	108.02232°
20-11	39.41858°	108.02236°
20-14BB	39.41853°	108.02240°
20-6	39.41866°	108.02232°
20-6BB	39.41861°	108.02236°
20-11BB	39.41857°	108.02240°
20-14	39.41852°	108.02244°



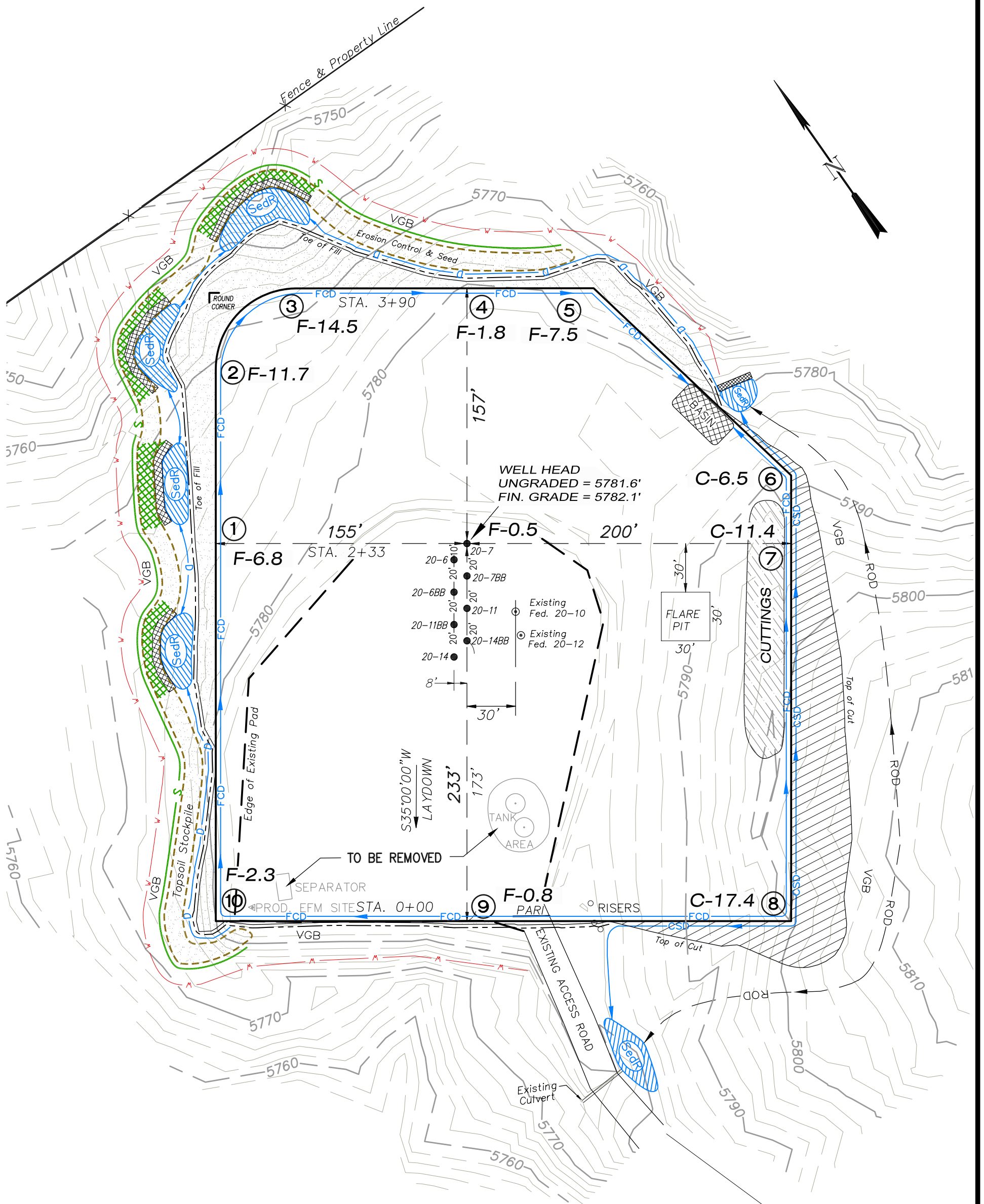
906 Main Street  
 Evanston, Wyoming 82930  
 Phone No. (307) 789-4545

<b>Interference Plat</b>	<b>Scale: 1" = 70'</b>	<b>SHEET</b> <b>2</b> <b>OF 10</b>
Project No. 05-04-73	Date Surveyed: 6/03/08	
Date Drawn: 8/31/09	Latest Revision Date: 1/18/10	

# EnCana Oil & Gas (USA) Inc.

## PN-20 Well Pad

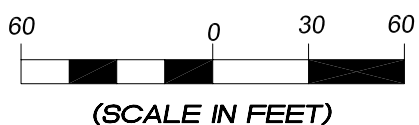
SE1/4 SW1/4, SECTION 20, T 7S, R 95 W, 6th P.M.



Total Surface Disturbance = 4.93 Acres  
(See Sheet 4 for Details)

- NOTES:
- (1) Slope Track and/or Terrace all Slopes and Piles
  - (2) Erosion Control & Seed Topsoil
  - (3) Erosion Control & Seed Outside
  - (4) Slope away from Substructure Areas 1% to 3% to Flow Control

- LEGEND
- SLASH
  - ST = SEDIMENT TRAP
  - SedR = SEDIMENT RESERVOIR
  - R.O.D. = RUN-ON DIVERSION
  - PERIMETER CONTROL (WATTLES)
  - CSD = CUT SLOPE DIVERSION (BERM TOE OF CUT SLOPE)
  - D = FILL DIVERSION TO SEDIMENT TRAP
  - VGB = VEGETATION BUFFER (UNDISTURBED LAND INSIDE PC)
  - FCD = FLOW CONTROL DITCH
  - PARI = PAD/ACCESS ROAD INTERFACE
  - LEVEL SPREADER
  - TOE BERM (PLACED AT TOE OF ALL FILL SLOPES/STOCKPILES)
  - TOPSOIL BERM
  - SEED, ECB & FLEX
  - SEED



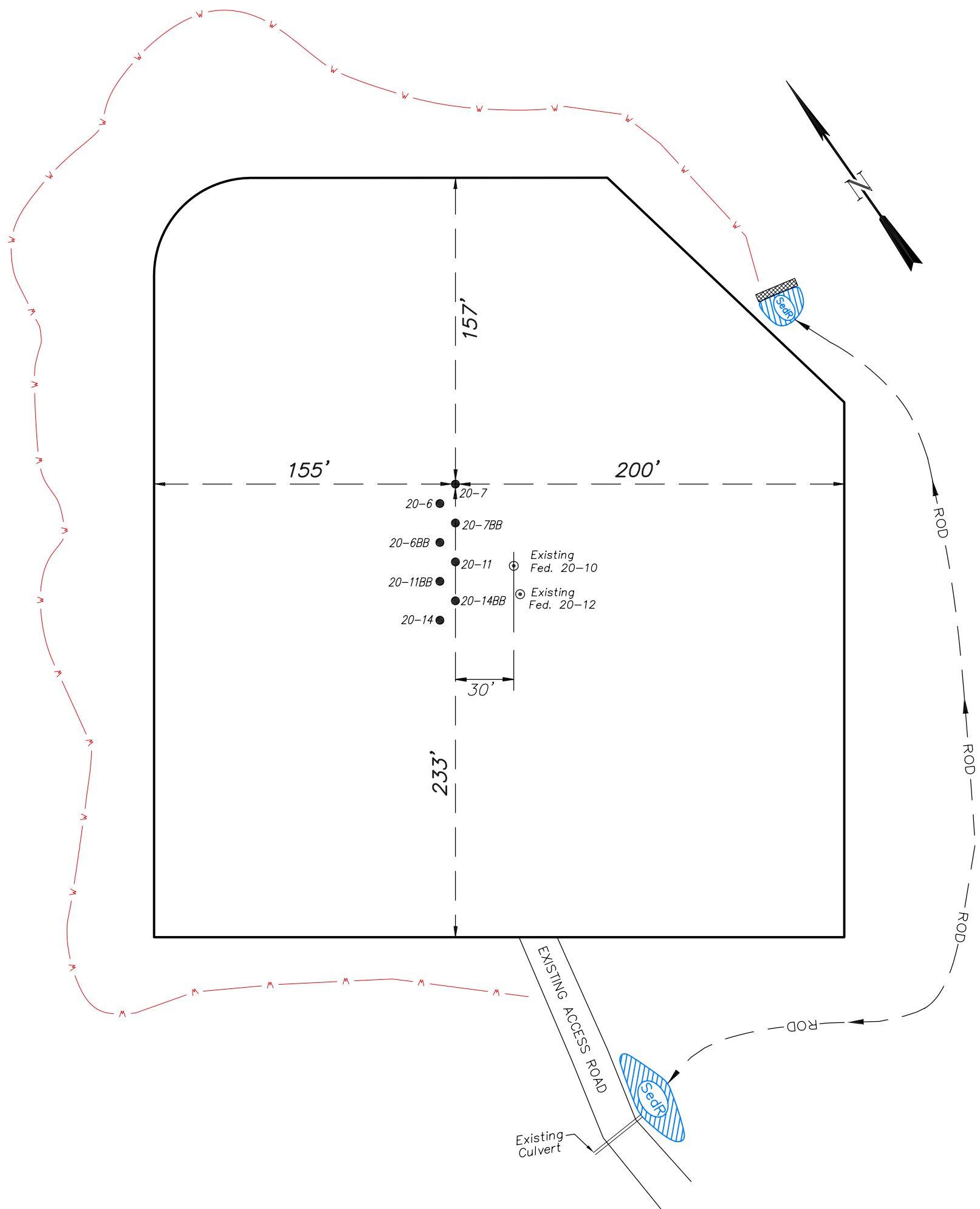
906 Main Street  
Evanston, Wyoming 82930  
Phone No. (307) 789-4545

Well Pad Layout		Scale: 1" = 60'	SHEET
Project No.	05-04-73	Date Surveyed:	6/03/08
Date Drawn:	8/31/09	Latest Revision Date:	1/18/10
			3 OF 10

**EnCana Oil & Gas (USA) Inc.**  
**PN-20 Well Pad**

SE1/4 SW1/4, SECTION 20, T 7S, R 95 W, 6th P.M.

**PRE-CONSTRUCTION PLAT**



Total Surface Disturbance = 4.93 Acres  
 (See Sheet 4 for Details)

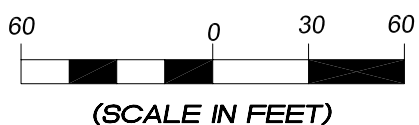
- NOTES:
- (1) Slope Track and/or Terrace all Slopes and Piles
  - (2) Erosion Control & Seed Topsoil
  - (3) Erosion Control & Seed Outside
  - (4) Slope away from Substructure Areas 1% to 3% to Flow Control

- LEGEND**
- SLASH
  - SEDIMENT TRAP
  - SedR = SEDIMENT RESERVOIR
  - R.O.D. = RUN-ON DIVERSION
  - PERIMETER CONTROL (WATTLES)
  - CSD = CUT SLOPE DIVERSION (BERM TOE OF CUT SLOPE)
  - D = FILL DIVERSION TO SEDIMENT TRAP
  - VGB = VEGETATION BUFFER (UNDISTURBED LAND INSIDE PC)
  - FCD = FLOW CONTROL DITCH
  - PARI = PAD/ACCESS ROAD INTERFACE
  - LEVEL SPREADER
  - TOE BERM (PLACED AT TOE OF ALL FILL SLOPES/STOCKPILES)
  - TOPSOIL BERM
  - SEED, ECB & FLEX
  - SEED

PRE-CONSTRUCTION PHASE COMPLETE,  
 AUTHORIZATION TO CONTINUE  
 CONSTRUCTION.  
 SIGNATURE: \_\_\_\_\_



906 Main Street  
 Evanston, Wyoming 82930  
 Phone No. (307) 789-4545

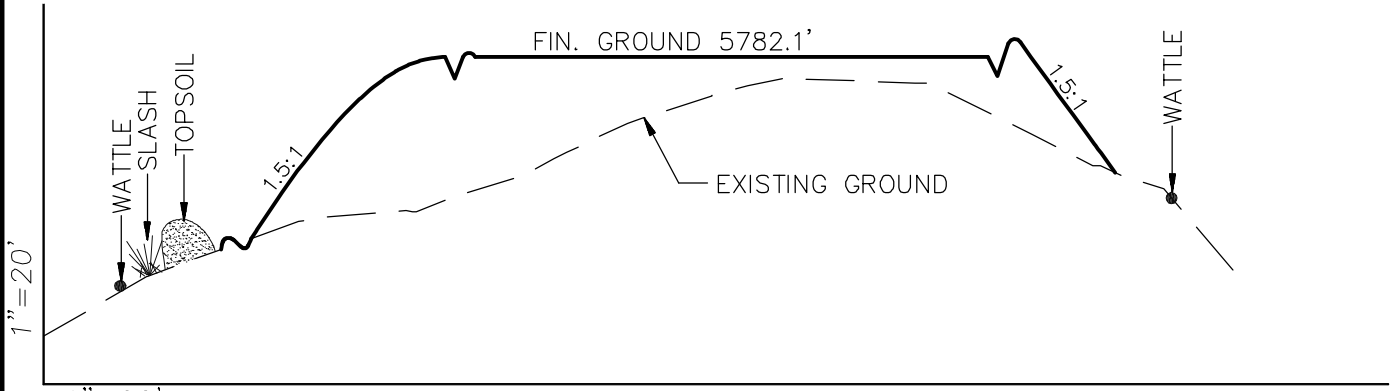


<b>Pre-Construction</b>		<b>Scale: 1" = 60'</b>	<b>SHEET</b> <b>3a</b> <b>OF 10</b>
Project No.	05-04-73	Date Surveyed: 6/03/08	
Date Drawn:	8/31/09	Latest Revision Date: 1/18/10	

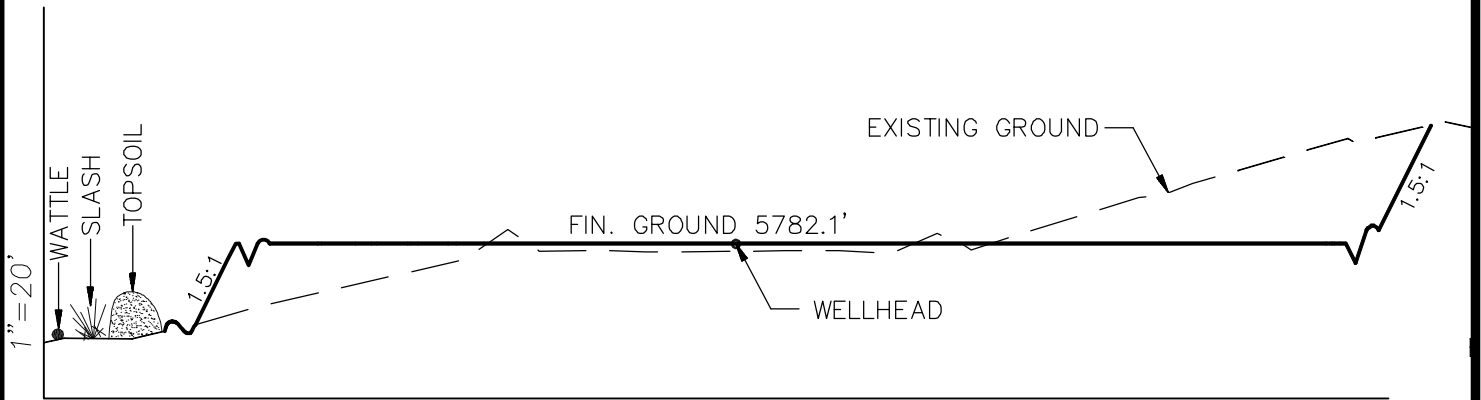
# EnCana Oil & Gas (USA) Inc.

## Well Pad (PN-20)

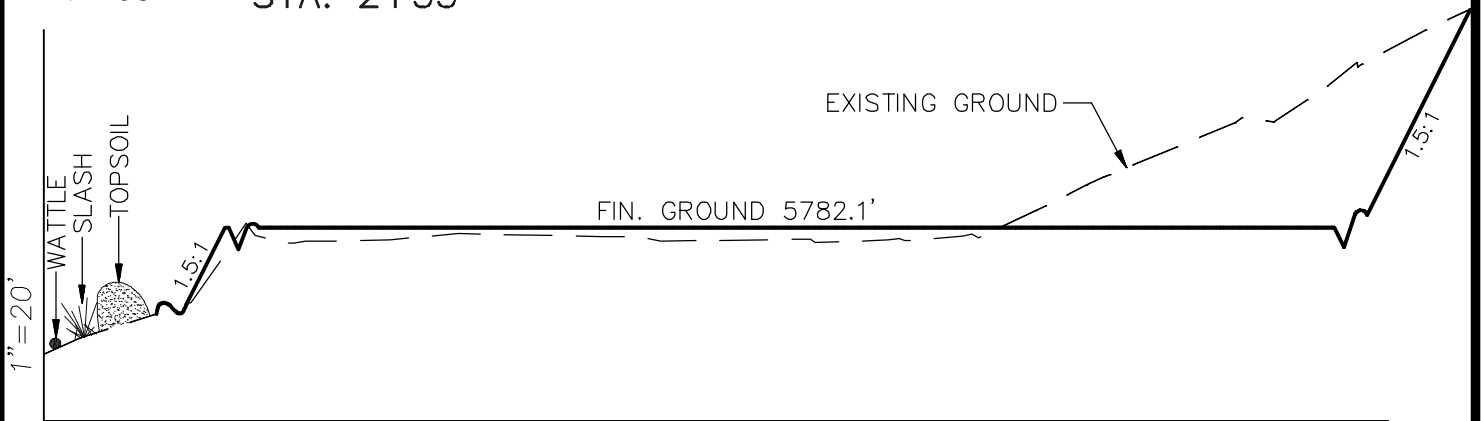
### CROSS SECTIONS



STA. 3+90



STA. 2+33



STA. 0+00

**NOTE:**  
THE EXCESS MATERIAL WILL BE USED TO CONSTRUCT WELL PAD CROWN.

#### SURFACE DISTURBANCE (IN ACRES)

Well Pad	3.0
Side Slopes	0.5
Topsoil & Waste Material	1.43
<b>TOTAL</b>	<b>4.93</b>

**NOTE:**  
ALL CUT AND FILL SLOPES ARE AT 1.5:1 UNLESS OTHERWISE NOTED.

#### EARTHWORK QUANTITIES

(in Cubic Yards w/ 0% shrink/swell)

ITEM	CUT	FILL	6" TOPSOIL EXCESS
PAD	12573	9230	Topsoil not included in Excavation 334.3
PIT	0	0	0
<b>TOTALS</b>	<b>12573</b>	<b>9230</b>	<b>2022 334.3</b>



906 Main Street  
Evanston, Wyoming 82930  
Phone No. (307) 789-4545

#### Cross Sections

Project No. **05-04-73**  
Date Drawn: **8/31/09**

#### Scale: As Shown

Date Surveyed: **6/03/08**  
Latest Revision Date: **1/18/10**

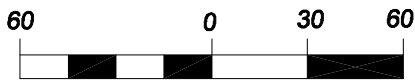
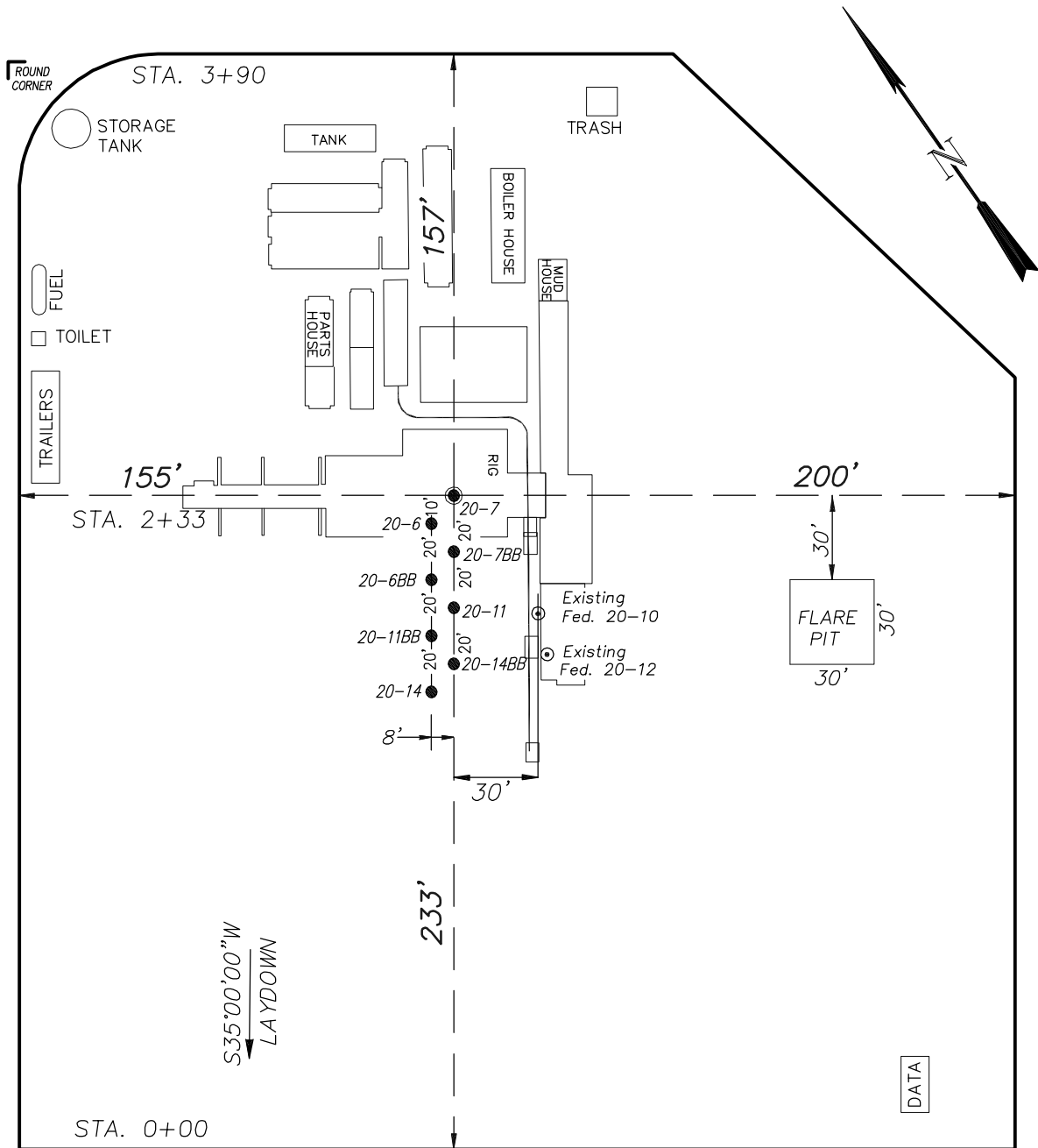
#### SHEET

**4**  
**OF 10**

# EnCana Oil & Gas (USA) Inc.

## Well Pad (PN-20)

### TYPICAL RIG LAYOUT



(SCALE IN FEET)

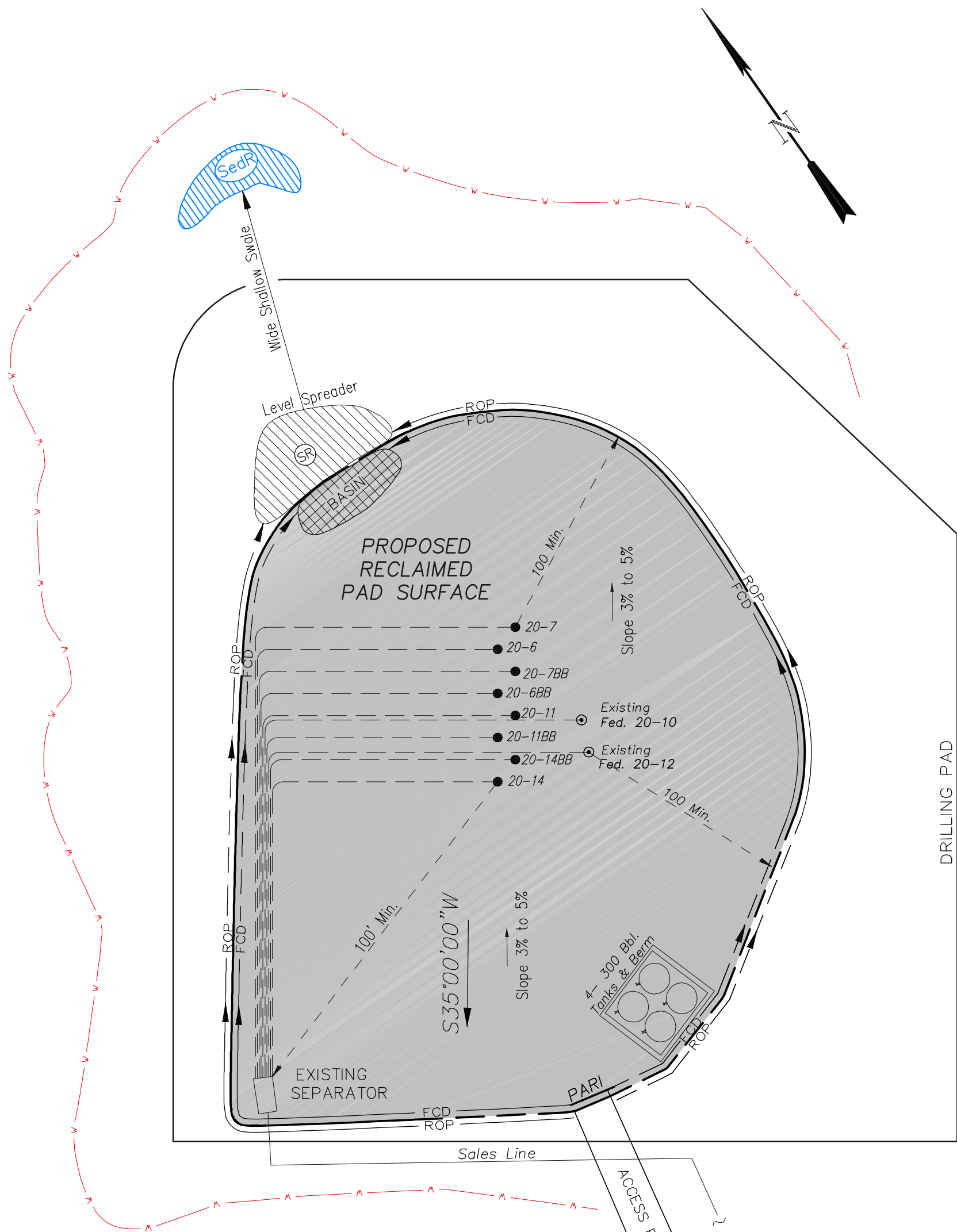


906 Main Street  
Evanston, Wyoming 82930  
Phone No. (307) 789-4545

Rig Layout		Scale: 1" = 60'	SHEET
Project No.	05-04-73	Date Surveyed:	6/03/08
Date Drawn:	8/31/09	Latest Revision Date:	1/18/10
			5
			OF 10

**EnCana Oil & Gas (USA) Inc.**  
**PN-20 Well Pad**

**PRODUCTION SCHEMATIC**



**NOTES:**

1. Set Tanks High so pad Entrance & Tan Area Can Drain to Pad Basin
2. Gravel Pad 75' from Wells & Around Tanks and Separators
3. Pad Drains to Pad Basin at a 3% to 5% slope
4. BMP Selection and Position may change Depending on Actual Conditions Encountered During the Construction Process

**NOTE:**

Actual Equipment Layout and Reclaimed Pad Surface Area May Change do to Production Requirements or Site Conditions.

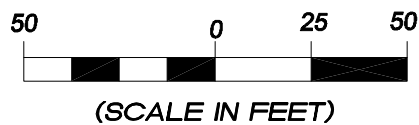
**ESTIMATED AREAS**  
RECLAIMED AREA: 3.3 ACRES  
UNRECLAIMED AREA: 1.6 ACRES

**LEGEND**

- SLASH
- ST = SEDIMENT TRAP
- SedR = SEDIMENT RESERVOIR
- R.O.D. = RUN-ON DIVERSION
- PERIMETER CONTROL (WATTLES)
- CSD = CUT SLOPE DIVERSION (BERM TOE OF CUT SLOPE)
- D = FILL DIVERSION TO SEDIMENT TRAP
- VGB = VEGETATION BUFFER (UNDISTURBED LAND INSIDE PC)
- FCD = FLOW CONTROL DITCH
- PARI = PAD/ACCESS ROAD INTERFACE
- LEVEL SPREADER
- TOE BERM (PLACED AT TOE OF ALL FILL SLOPES/STOCKPILES)
- TOPSOIL BERM
- SEED, ECB & FLEX
- SEED

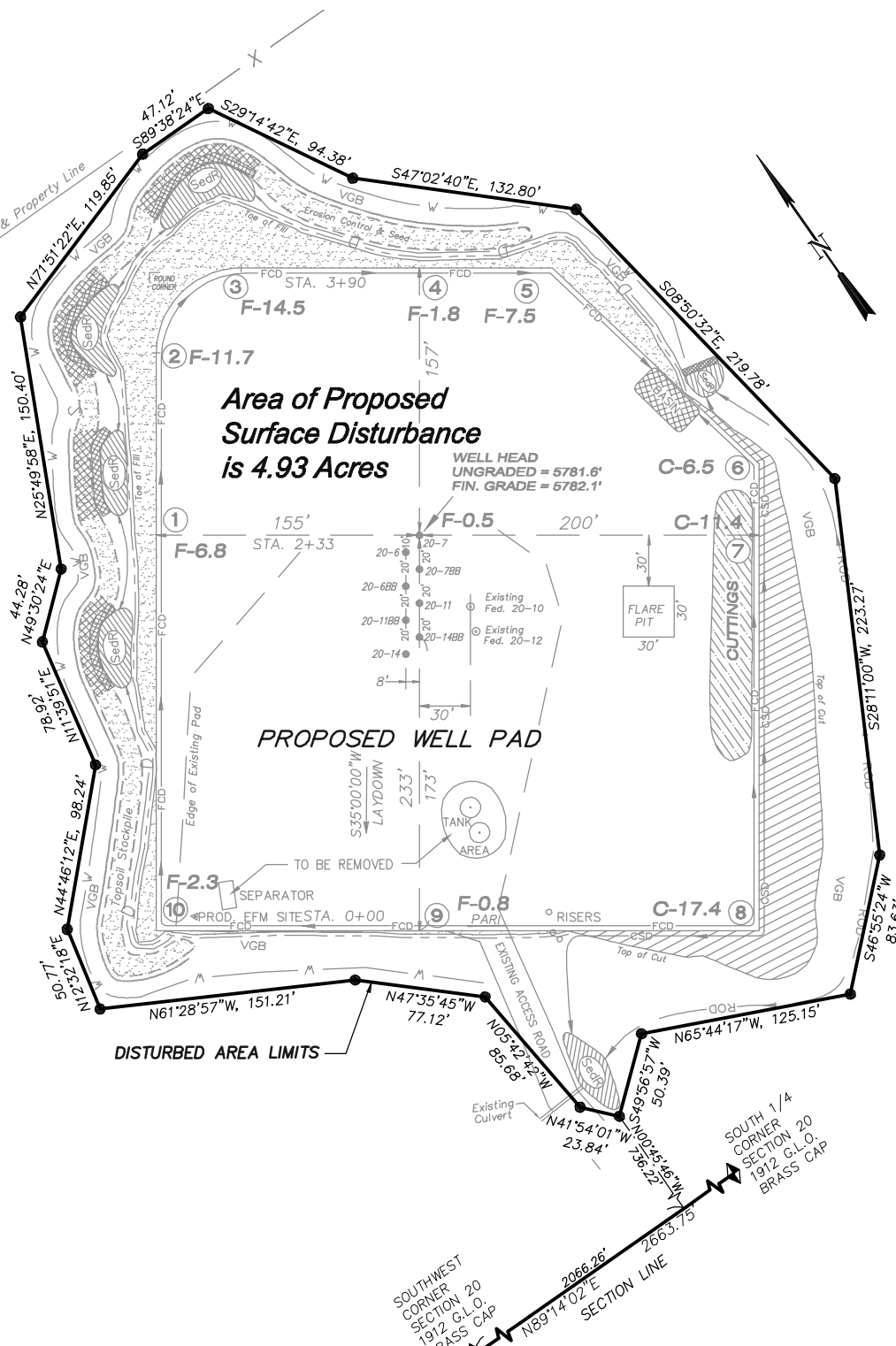


906 Main Street  
Evanston, Wyoming 82930  
Phone No. (307) 789-4545



<b>Production Schematic</b>		<b>Scale: 1" = 50'</b>	<b>SHEET</b>
Project No.	05-04-73	Date Surveyed:	6/03/08
Date Drawn:	8/31/08	Latest Revision Date:	1/18/10
			<b>6</b>
			<b>OF 10</b>

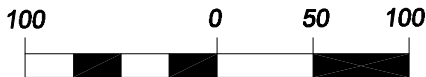
**EnCana Oil & Gas (USA) Inc.**  
**PN-20 Well Pad**  
**Section 20, T7S, R95W, 6th P.M.**  
**SURFACE DISTURBANCE AREA**



**Area of Proposed  
Surface Disturbance  
is 4.93 Acres**

**PROPOSED WELL PAD**

**DISTURBED AREA LIMITS**



(SCALE IN FEET)



906 Main Street  
 Evanston, Wyoming 82930  
 Phone No. (307) 789-4545

<b>Surface Disturbance</b>		<b>Scale: 1" = 100'</b>	<b>SHEET 7 OF 10</b>
<b>Project No.</b>	<b>05-04-73</b>	<b>Date Surveyed: 6/03/08</b>	
<b>Date Drawn:</b>	<b>8/31/09</b>	<b>Latest Revision Date: 1/18/10</b>	