

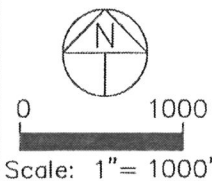
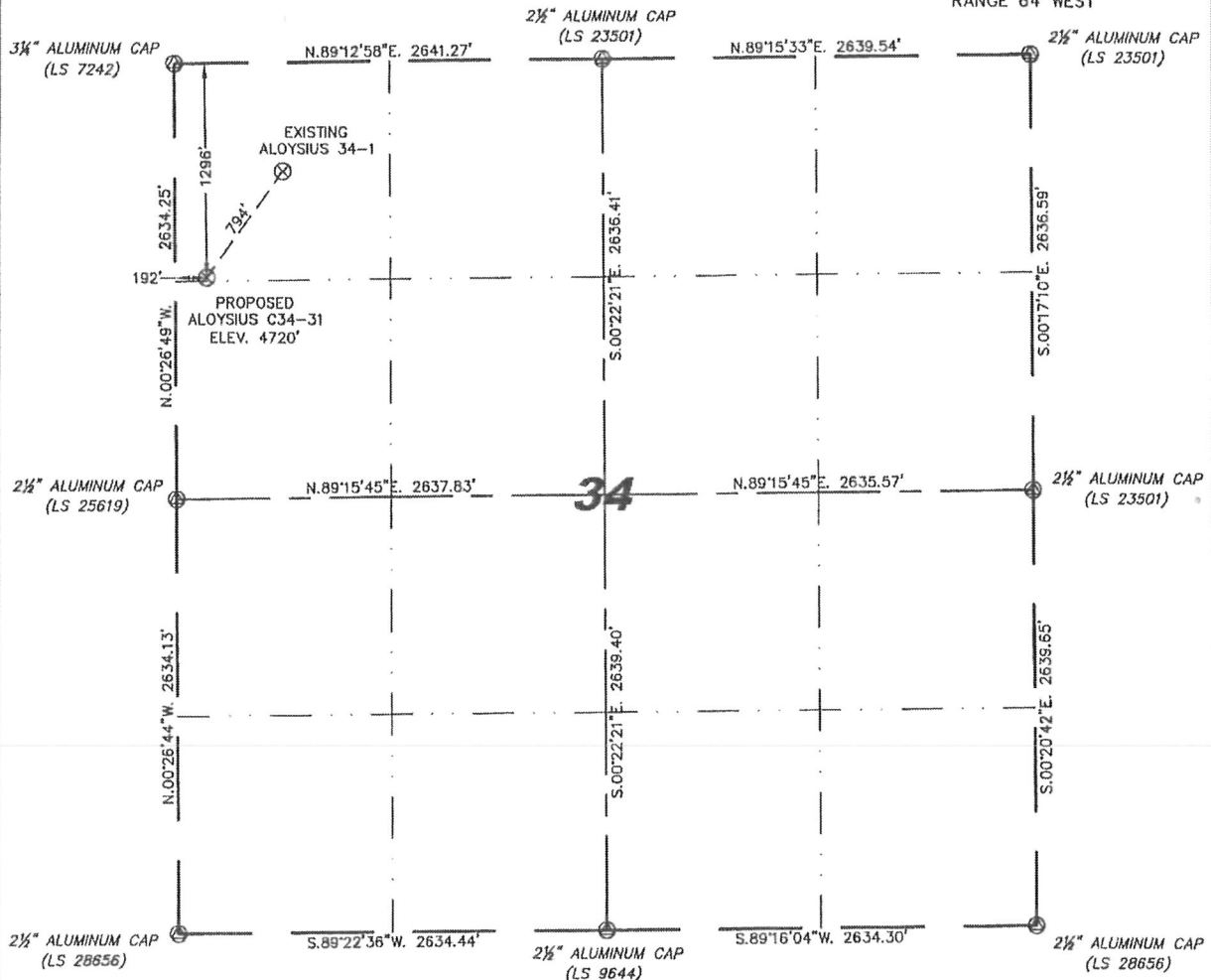
Steil Surveying Services, LLC

1102 West 19th Street P.O. BOX 2073

Cheyenne, Wyoming 82009

WELL LOCATION CERTIFICATE
THIS MAP DOES NOT REPRESENT A BOUNDARY SURVEY

SECTION 34
TOWNSHIP 4 NORTH
RANGE 64 WEST



IN ACCORDANCE WITH A REQUEST FROM ERIK VAN DECAR - NOBLE ENERGY INC., STEIL SURVEYING SERVICES, LLC HAS DETERMINED THE LOCATION OF THE ALOYSIUS C34-31 WELL TO BE 1296' FNL, 192' FWL, AS MEASURED AT NINETY (90) DEGREES FROM THE SECTION LINES, SECTION 34, TOWNSHIP 4 NORTH, RANGE 64 WEST, 6TH PRINCIPLE MERIDIAN, WELD COUNTY, COLORADO.

I HEREBY CERTIFY THAT THIS WELL LOCATION CERTIFICATE WAS PREPARED BY ME, OR UNDER MY DIRECT SUPERVISION, THAT THE FIELD WORK WAS COMPLETED ON 09/15/2009, FOR AND ON BEHALF OF NOBLE ENERGY INC., THAT IT IS NOT A LAND SURVEY PLAT OR AN IMPROVEMENT SURVEY PLAT, AND THAT IT IS NOT TO BE RELIED UPON FOR ESTABLISHMENT OF FENCE, BUILDING, OR OTHER FUTURE IMPROVEMENT LINES.

NOTES:

- 1) BASIS OF BEARINGS FOR THIS MAP ARE BASED UPON GPS OBSERVATIONS MADE ON 09/15/2009 BETWEEN MONUMENTS LOCATED AT THE SOUTHEAST SECTION CORNER AND THE NORTHEAST SECTION CORNER OF SAID SECTION AND WITH ALL BEARINGS SHOWN HEREON RELATIVE THERETO.
- 2) ELEVATIONS ARE BASED UPON NGS OPUS SOLUTION NAVD 88 DATUM.
- 3) THE NEAREST EXISTING WELL IS: ALOYSIUS 34-1, 794' NORTHEAST.
- 4) SEE VISIBLE IMPROVEMENTS EXHIBIT FOR ALL IMPROVEMENTS WITHIN 400'.
- 5) THE LOCATION FALLS IN PASTURE LAND.

LATITUDE & LONGITUDE (NAD 83 SURFACE HOLE):
LATITUDE: N 40.27265°
LONGITUDE: W 104.54582°
PDOP: 2.0
QUARTER-QUARTER: NW/4NW/4
NEAREST PROPERTY LINE: 192' TO THE WEST

LEGEND

NOTICE: According to Colorado law you MUST commence any legal action based upon any defect in this W.L.C. within three years after you first discover such defect. In no event may any action based upon any defect in this W.L.C. be commenced more than ten years from this date of the certification shown hereon.

- (A) FOUND SURVEY MONUMENT PER MONUMENT RECORD - EXCEPTIONS NOTED.
- (C) CALCULATED DIMENSION

David C. Holmes
Professional Land Surveyor Registration No. 32828
State of Colorado

JOB #: 09086

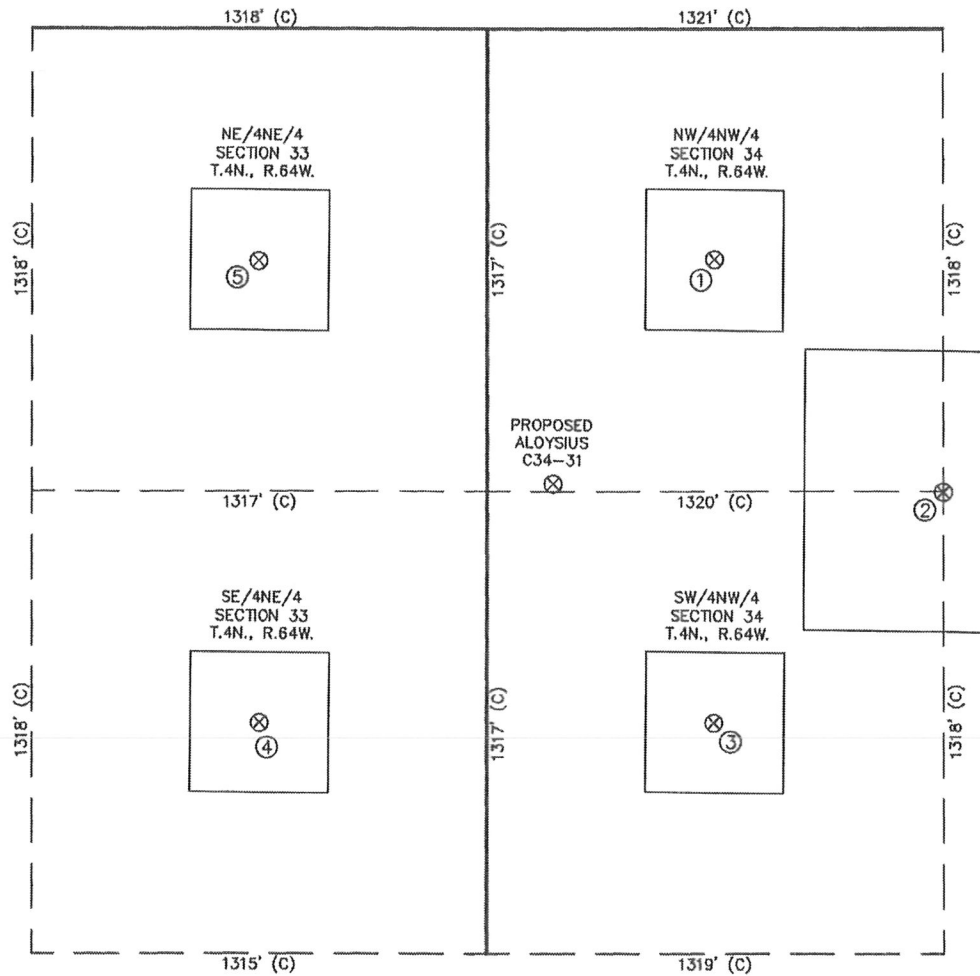


Completed 09/18/2009

Permit Zones: C/N
 Surface Csg: 600' (252 sks)
 TD/MD: 7039' (627 sks)

SITE SKETCH – ALOYSIUS C34-31

SECTION 34
 TOWNSHIP 4 NORTH
 RANGE 64 WEST



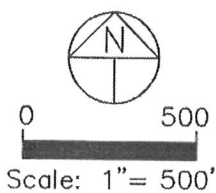
①
 ALOYSIUS 34-1
 NW/NW SEC. 34
 658' FNL
 660' FWL
 EL 4724'
 N 40.27441
 W 104.54413
 PDOP 2.5

②
 ALOYSIUS
 C34-19
 SW/NW SEC. 34
 1320' FNL
 1320' FWL
 EL 4698'
 N 40.27260
 W 104.54178
 PDOP 2.5

③
 ALOYSIUS
 C34-8
 SW/NW SEC. 34
 1978' FNL
 657' FWL
 EL 4697'
 N 40.27078
 W 104.54416
 PDOP 1.8

④
 LINDSAY
 C33-15
 SE/NE SEC. 33
 1978' FNL
 658' FEL
 EL 4709'
 N 40.27078
 W 104.54887
 PDOP 1.9

⑤
 LINDSAY
 C33-14
 NE/NE SEC. 33
 662' FNL
 662' FEL
 EL 4734'
 N 40.27439
 W 104.54887
 PDOP 1.8



NOTES:
 1) THIS SKETCH DOES NOT REPRESENT A BOUNDARY SURVEY.
 2) THE DATUM FOR THE LATITUDES AND LONGITUDES ON THIS SKETCH IS NAD83.