

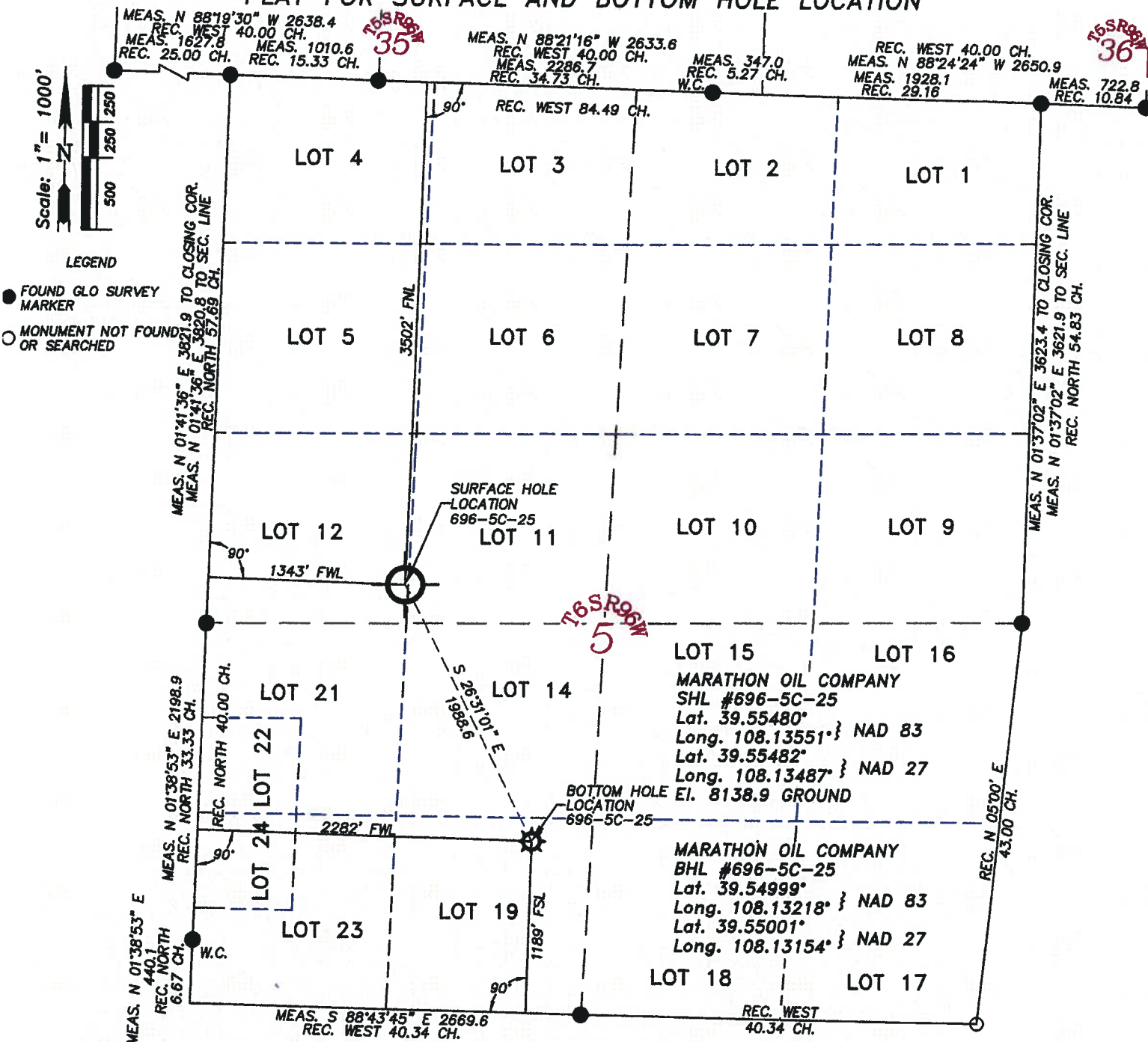
EXHIBIT "B7"
WILLIAM H. SMITH & ASSOCIATES P.C.
SURVEYING CONSULTANTS

P.O. BOX 820
 GREEN RIVER, WYOMING 82935

550 EAST 2ND NORTH
 PH. 307-875-3638
 FAX. 307-875-3640

T 6 S R 96 W

PLAT FOR SURFACE AND BOTTOM HOLE LOCATION



I, William H. Dolinar of Green River, Wyoming hereby certify that in accordance with a request from Frank Krugh for Marathon Oil Company, 5555 San Felipe, Houston, TX 77056. I and or personnel under my direction made a survey on the 28th day of September 2008, for the Surface Hole Location and Elevation of Marathon Oil Company, Well #696-5C-25 being located within Lot 12 of Section 5, and the Bottom Hole Location being located within Lot 19 of Section 5, T 6 S, R 96 W, of the 6th Principal Meridian, Garfield County, State of Colorado, as shown on the above Section Map. Surface Hole Elevation of ungraded ground = 8138.9 feet.
 Note: Basis of bearings are grid bearings based from GPS observations. Horizontal Datum based on Colorado State Plane Coordinate System Central Zone NAD 83. Vertical Datum based on NAVD 88 NGS Triangulation Station SHALE.
 NOTE: Record bearings as shown are based on the General Land Office survey, as approved on January 15, 1923.



JOB NO. 26099
 12/05/2008 CED
 PAD 596-32A/PAD596-32A PLATS.dwg

LEICA GPS GDOP OF 2.3 ON 09/28/2008
 IMPROVEMENTS: EXISTING 2-TRACK ROAD
 SURFACE USE: GRAZING: SCRUB OAK
 AND NATURAL GROUND

696-5C-25
 SHEET 1 of 1

~SEAL~