

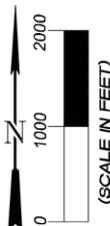


LEGEND

-  PL31SW WELL PAD
-  EXISTING ROAD



Wasatch Surveying Associates
 906 Main Street Evanston, Wyoming 82930
 Phone No. (307) 789-4545 Fax 307-789-5722



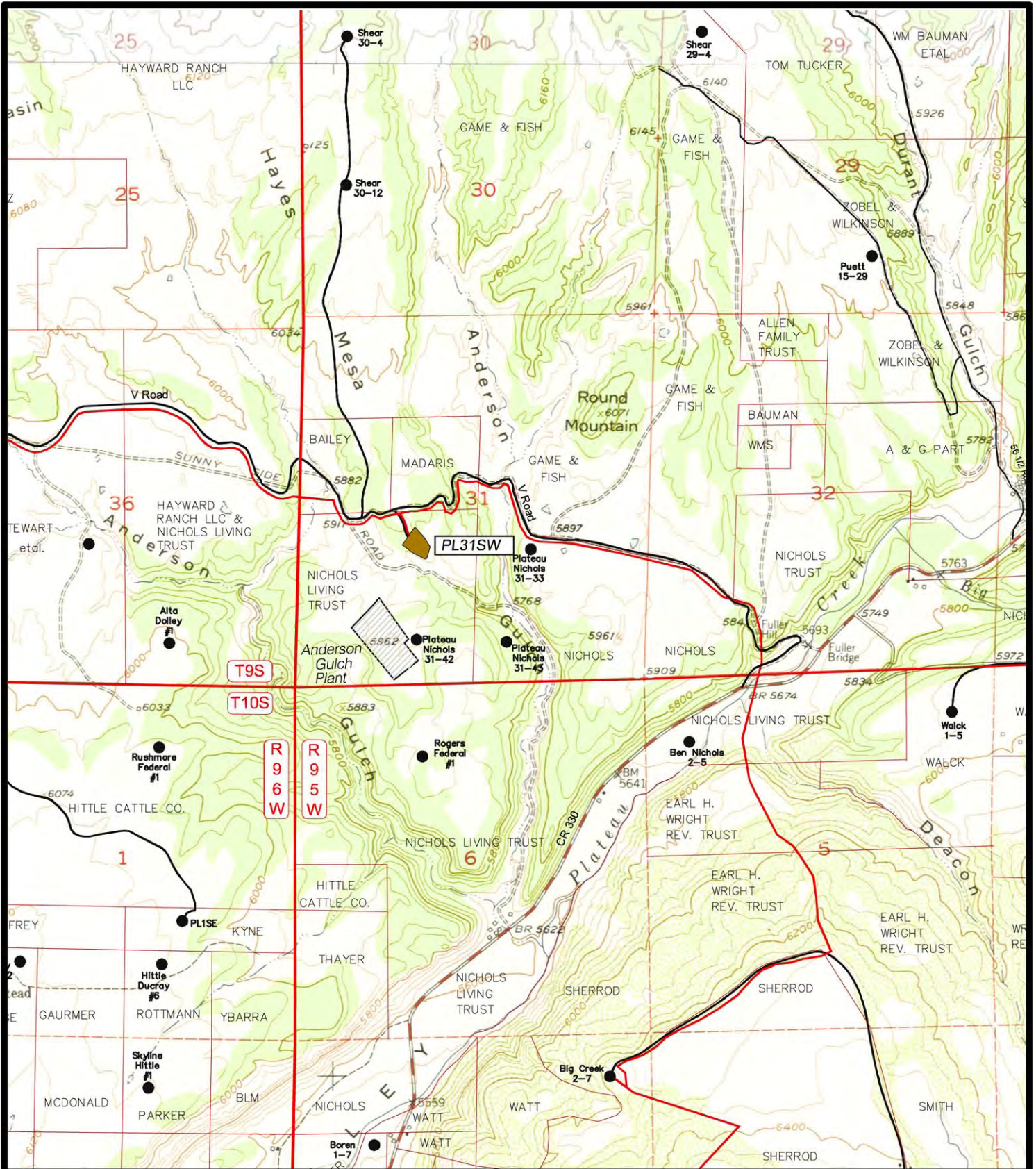
EnCana Oil & Gas (USA) Inc.

PL31SW Well Pad
 SECTION 31, T9S, R95W, 6th, P.M.
 MESA COUNTY, COLORADO




TOPO B

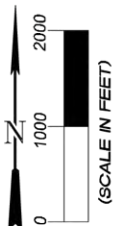
PROJECT NUMBER
09-04-42
 DATE: 11/10/09
 SCALE: 1" = 2000'

9
of 10



LEGEND

-  PL31SW WELL PAD
-  EXISTING ROAD
-  EXISTING PIPELINE



EnCana Oil & Gas (USA) Inc.

PL31SW Well Pad
SECTION 31, T9S, R95W, 6th, P.M.
MESA COUNTY, COLORADO



Wasatch Surveying Associates
906 Main Street Evanston, Wyoming 82930
Phone No. (307) 789-4545 Fax 307-789-5722

TOPO D

PROJECT NUMBER
09-04-42
DATE: 11/10/09
SCALE: 1" = 2000'

10
of 10