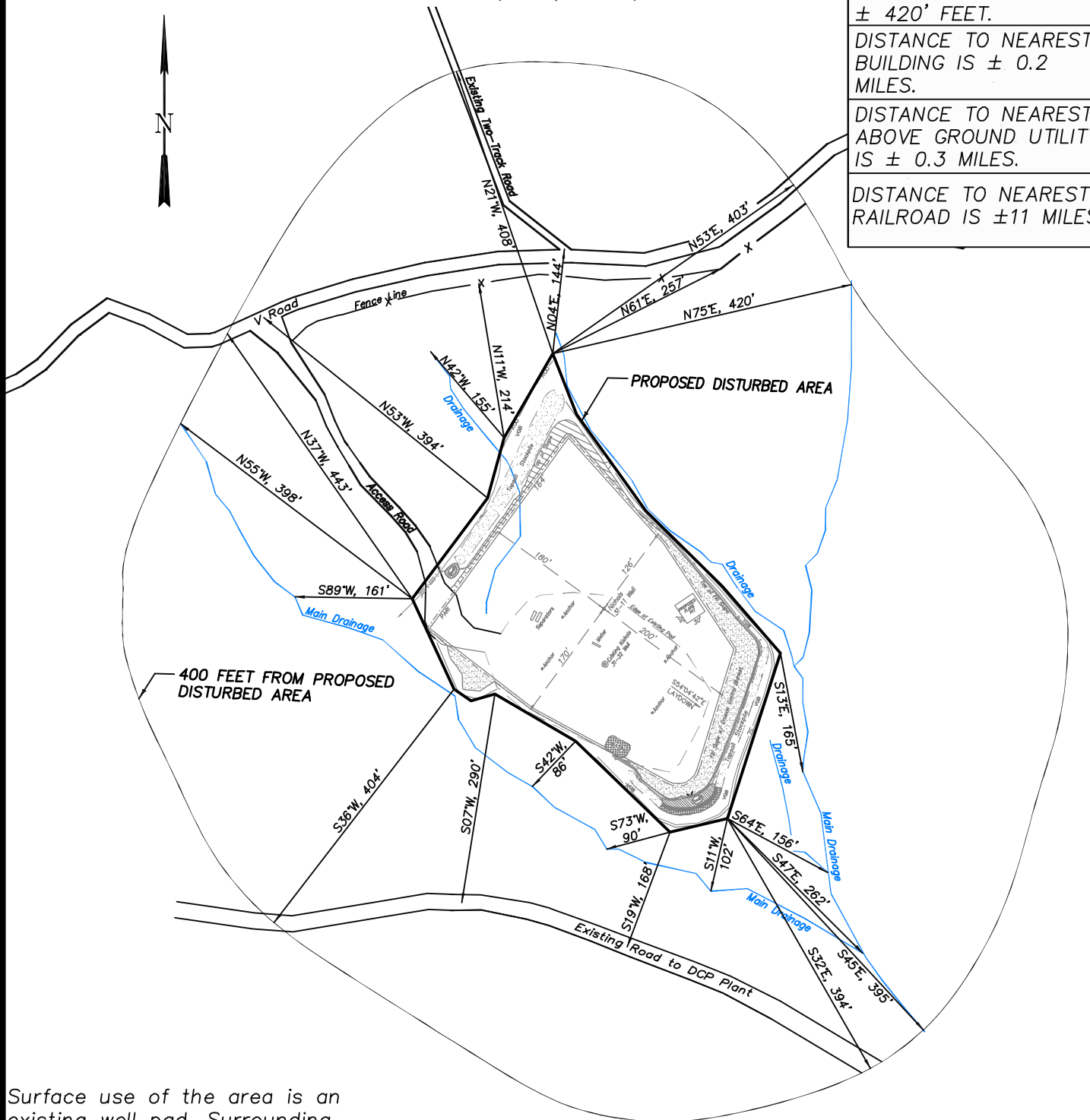


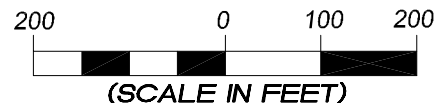
EnCana Oil & Gas (USA) Inc.
ADDENDUM TO LEGAL PLATS FOR
PL31SW Well Pad

SECTION 31, T9S, R95W, 6th P.M.

DISTANCE TO NEAREST PUBLIC ROAD IS ± 420' FEET.
DISTANCE TO NEAREST BUILDING IS ± 0.2 MILES.
DISTANCE TO NEAREST ABOVE GROUND UTILITY IS ± 0.3 MILES.
DISTANCE TO NEAREST RAILROAD IS ± 11 MILES.



Surface use of the area is an existing well pad. Surrounding area of use is grazing. Vegetation consists mainly of sage brush, oak brush and native grasses.



906 Main Street
 Evanston, Wyoming 82930
 Phone No. (307) 789-4545

Addendum		Scale: 1" = 200'	SHEET 1a OF 10
Project No.	09-04-42	Date Surveyed: 10/21/09	
Date Drawn:	11/10/09	Latest Revision Date:	

EnCana Oil & Gas (USA) Inc.
Well Pad PL31SW
Section 31, T9S, R95W, 6th P.M.
WELL PAD INTERFERENCE PLAT

RELATIVE COORDINATES From top hole to bottom hole		
WELL	NORTH	EAST
31-11	0	0

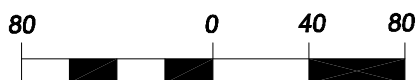
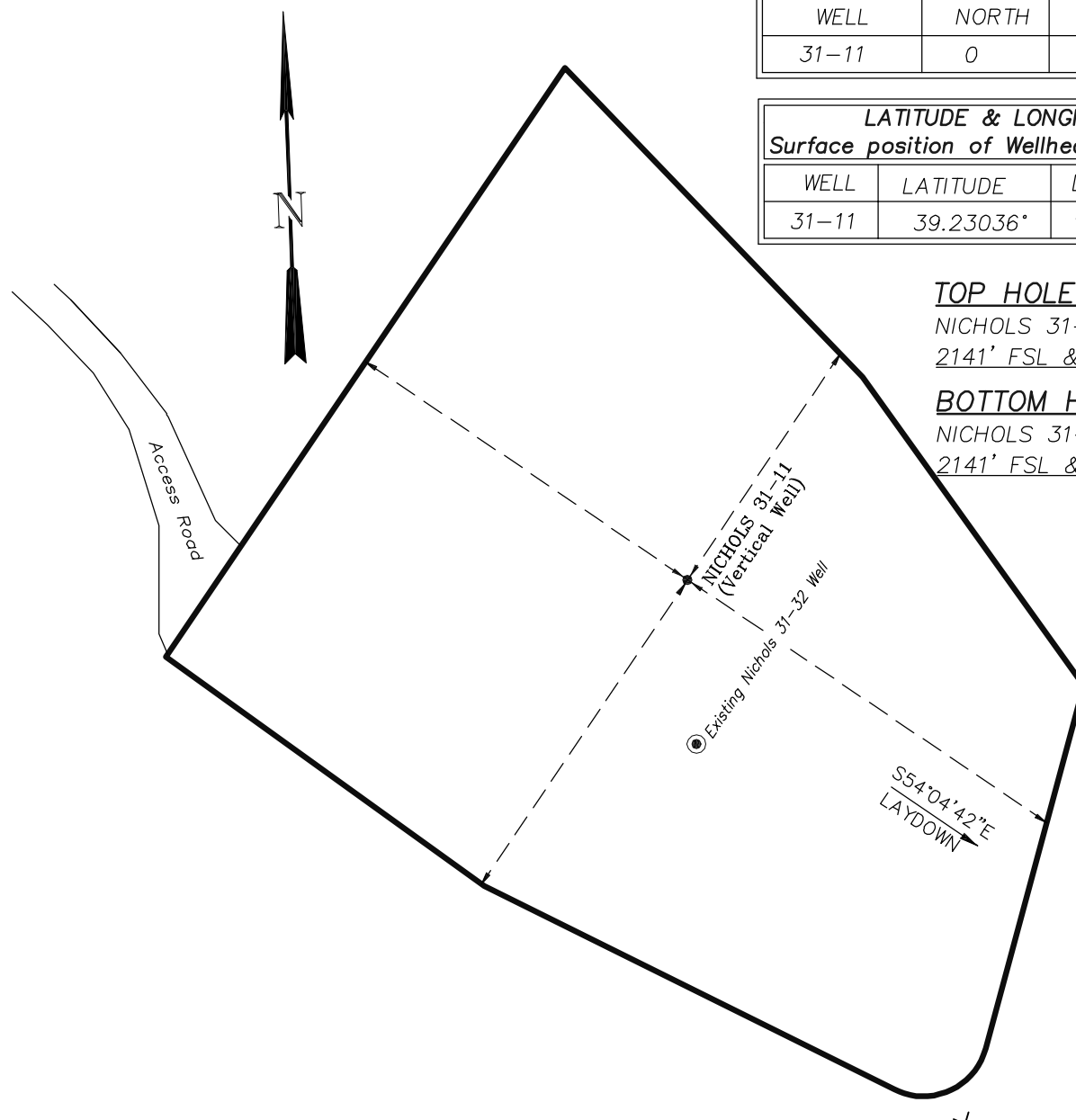
LATITUDE & LONGITUDE Surface position of Wellheads (NAD 83)		
WELL	LATITUDE	LONGITUDE
31-11	39.23036°	108.03774°

TOP HOLE FOOTAGES

NICHOLS 31-11 (PL31SW)
 2141' FSL & 1786' FWL

BOTTOM HOLE FOOTAGES

NICHOLS 31-11 (PL31SW)
 2141' FSL & 1786' FWL



(SCALE IN FEET)

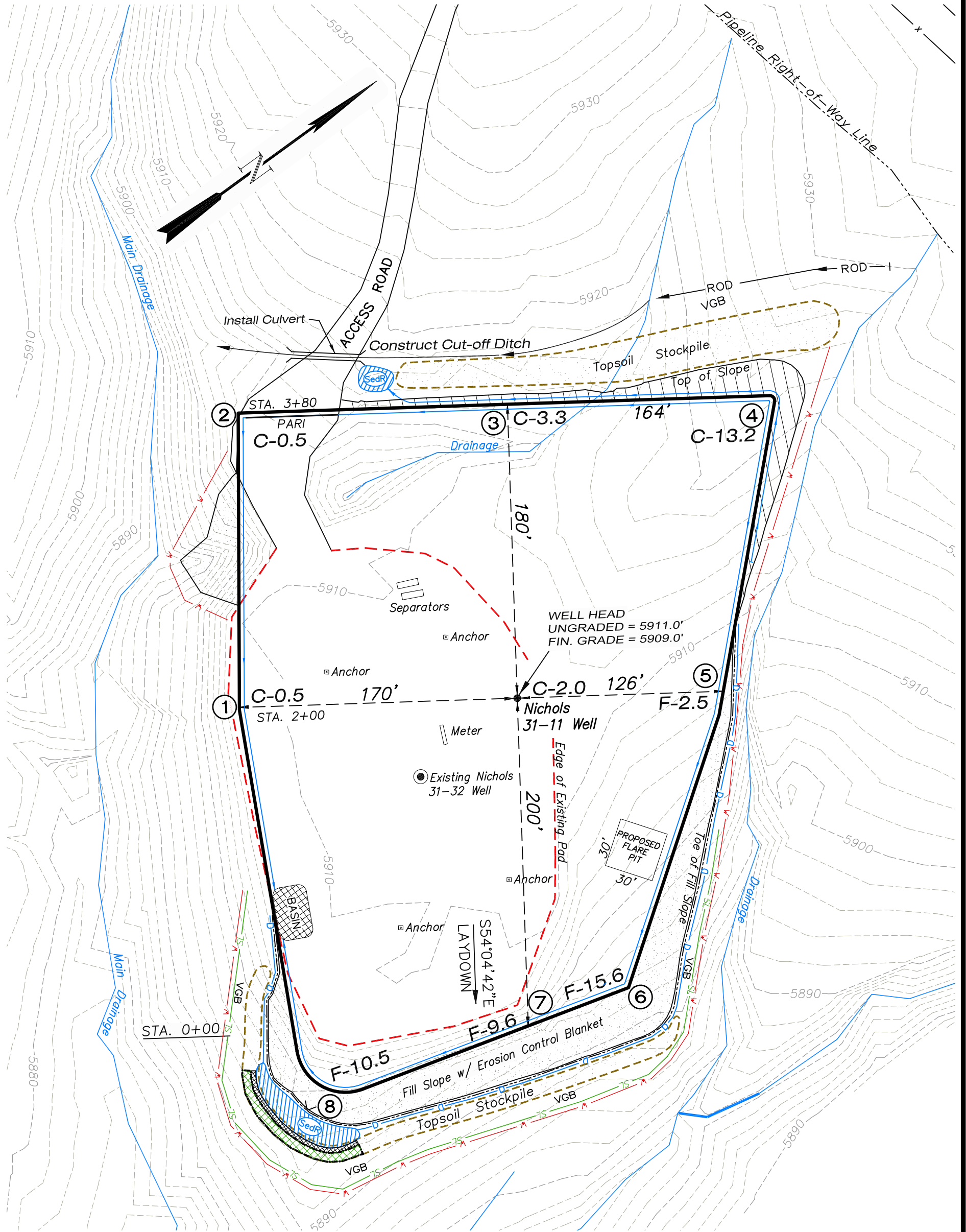


906 Main Street
 Evanston, Wyoming 82930
 Phone No. (307) 789-4545

Interference Plat		Scale: 1" = 80'	SHEET 2 OF 10
Project No.	09-04-42	Date Surveyed:	
Date Drawn:	11/10/09	Latest Revision Date:	

EnCana Oil & Gas (USA) Inc.
PL31SW Well Pad

NE1/4 SW1/4, SECTION 31, T9S, R95W, 6th P.M.
WELL PAD LAYOUT



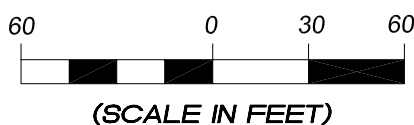
Total Surface Disturbance = 3.73 Acres
(See Sheet 4 for Details)

- NOTES:
- (1) Slope Track and/or Terrace all Slopes and Piles
 - (2) Erosion Control & Seed Topsoil
 - (3) Erosion Control & Seed Outside
 - (4) Slope away from Substructure Areas 1% to 3% to Flow Control

- LEGEND
- SLASH
 - ST = SEDIMENT TRAP
 - SR = SEDIMENT RESERVOIR
 - R.O.D. = RUN-ON DIVERSION
 - PERIMETER CONTROL (WATTLES)
 - CSD = CUT SLOPE DIVERSION (BERM TOE OF CUT SLOPE)
 - D = FILL DIVERSION TO SEDIMENT TRAP
 - VGB = VEGETATION BUFFER (UNDISTURBED LAND INSIDE PC)
 - FCD = FLOW CONTROL DITCH
 - PARI = PAD/ACCESS ROAD INTERFACE
 - LEVEL SPREADER
 - TOE BERM (PLACED AT TOE OF ALL FILL SLOPES/STOCKPILES)
 - TOPSOIL BERM
 - SEED, ECB & FLEX
 - SEED



906 Main Street
Evanston, Wyoming 82930
Phone No. (307) 789-4545



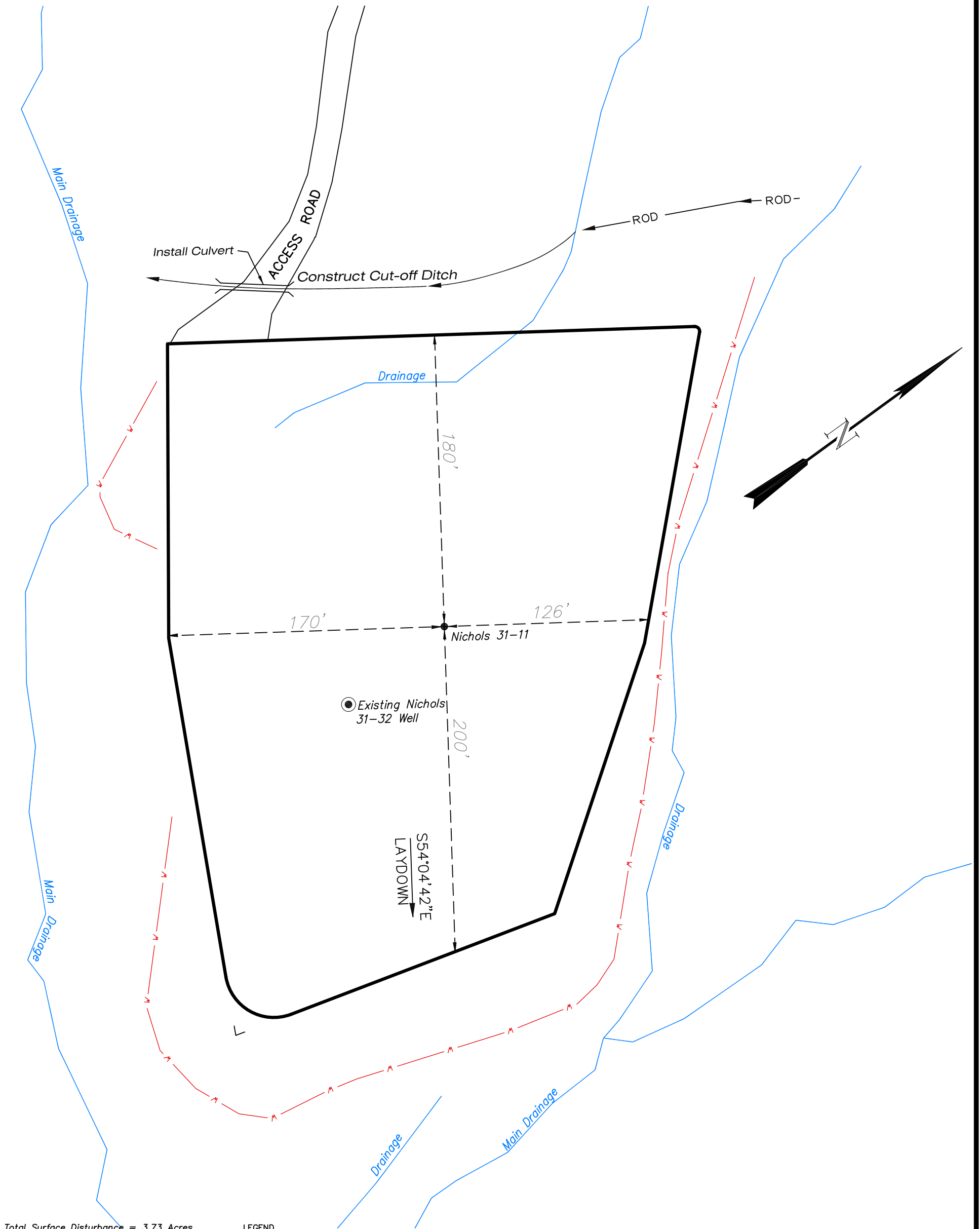
Well Pad Layout		Scale: 1" = 60'	SHEET 3 OF 10
Project No.	09-04-42	Date Surveyed: 10/21/09	
Date Drawn: 11/10/09		Latest Revision Date:	

EnCana Oil & Gas (USA) Inc.

PL31SW Well Pad

NE1/4 SW1/4, SECTION 31, T9S, R95W, 6th P.M.

PRE-CONSTRUCTION PLAT



Total Surface Disturbance = 3.73 Acres
(See Sheet 4 for Details)

- NOTES:
- (1) Slope Track and/or Terrace all Slopes and Piles
 - (2) Erosion Control & Seed Topsoil
 - (3) Erosion Control & Seed Outside
 - (4) Slope away from Substructure Areas 1% to 3% to Flow Control

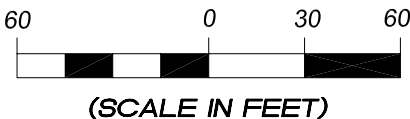
- LEGEND
- SLASH
 - ST = SEDIMENT TRAP
 - SR = SEDIMENT RESERVOIR
 - R.O.D. = RUN-ON DIVERSION
 - PERIMETER CONTROL (WATTLES)
 - CSD = CUT SLOPE DIVERSION (BERM TOE OF CUT SLOPE)
 - D = FILL DIVERSION TO SEDIMENT TRAP
 - VCB = VEGETATION BUFFER (UNDISTURBED LAND INSIDE PC)
 - FCD = FLOW CONTROL DITCH
 - PARI = PAD/ACCESS ROAD INTERFACE
 - LEVEL SPREADER
 - TOE BERM (PLACED AT TOE OF ALL FILL SLOPES/STOCKPILES)
 - TOPSOIL BERM
 - SEED, ECB & FLEX
 - SEED

PRE-CONSTRUCTION PHASE COMPLETE,
AUTHORIZATION TO CONTINUE
CONSTRUCTION.

SIGNATURE: _____



906 Main Street
Evanston, Wyoming 82930
Phone No. (307) 789-4545

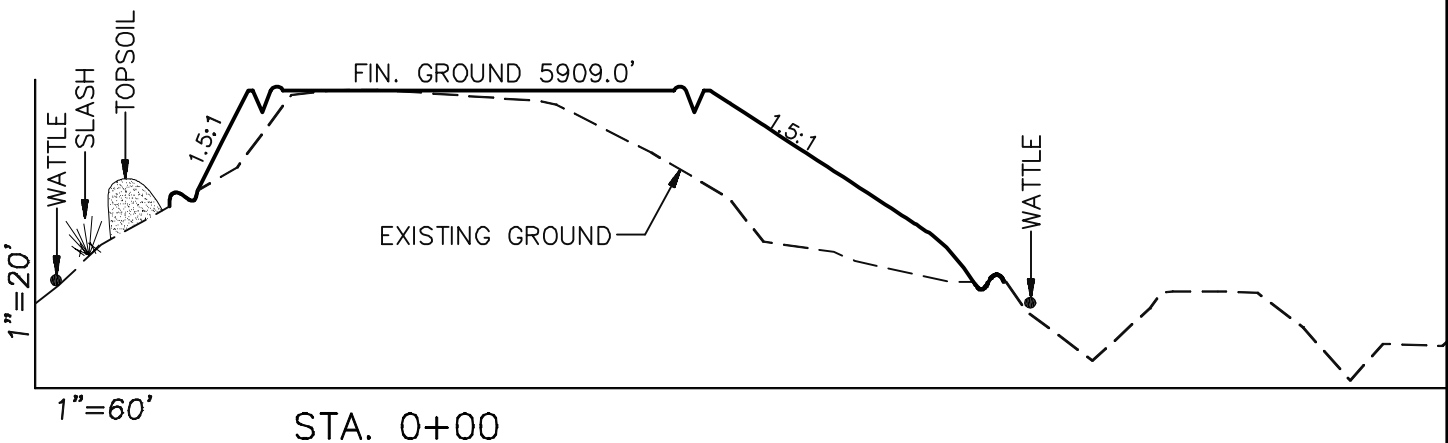
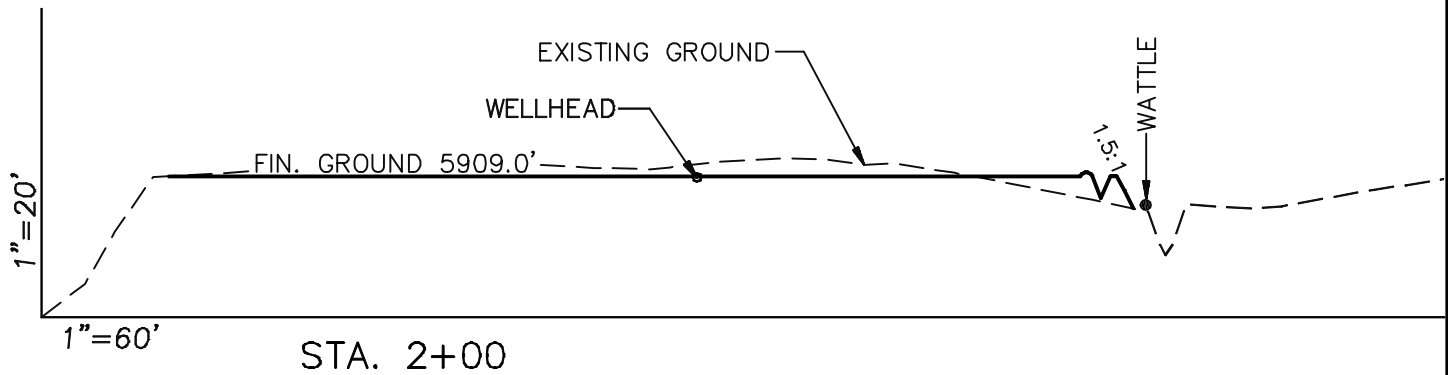
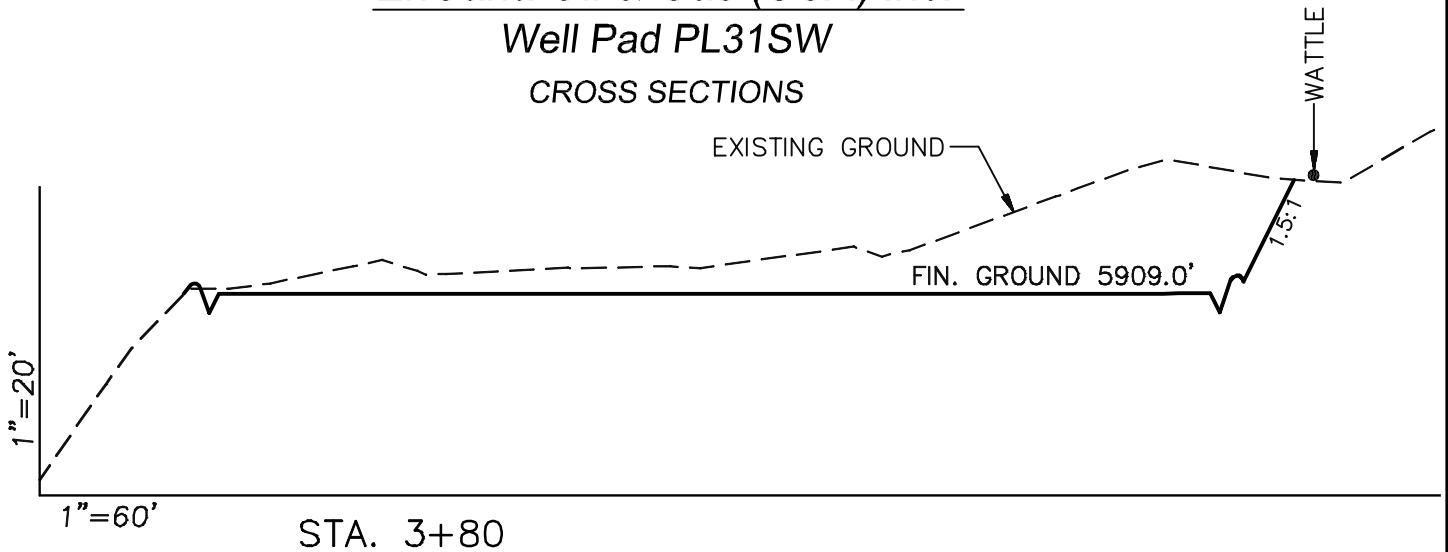


Pre-Construction		Scale: 1" = 60'	SHEET 3a OF 10
Project No.	09-04-42	Date Surveyed: 10/21/09	
Date Drawn: 11/10/09		Latest Revision Date:	

EnCana Oil & Gas (USA) Inc.

Well Pad PL31SW

CROSS SECTIONS



SURFACE DISTURBANCE (IN ACRES)

Well Pad	2.5
Side Slopes	0.4
Topsoil & Waste Material	0.83
TOTAL	3.73

NOTE:
ALL CUT AND FILL
SLOPES ARE AT 1.5:1
UNLESS OTHERWISE
NOTED.

EARTHWORK QUANTITIES

(in Cubic Yards w/ 0% shrink/swell)

ITEM	CUT	FILL	6" TOPSOIL	EXCESS
PAD	6600	6600	Topsoil not included in Excavation	0
PIT	0	0		0
TOTALS	6600	6600	1950	0

Cross Sections

Project No. 09-04-42
Date Drawn: 11/10/09

Scale: As Shown

Date Surveyed: 10/21/09
Latest Revision Date:

SHEET

4

OF 10

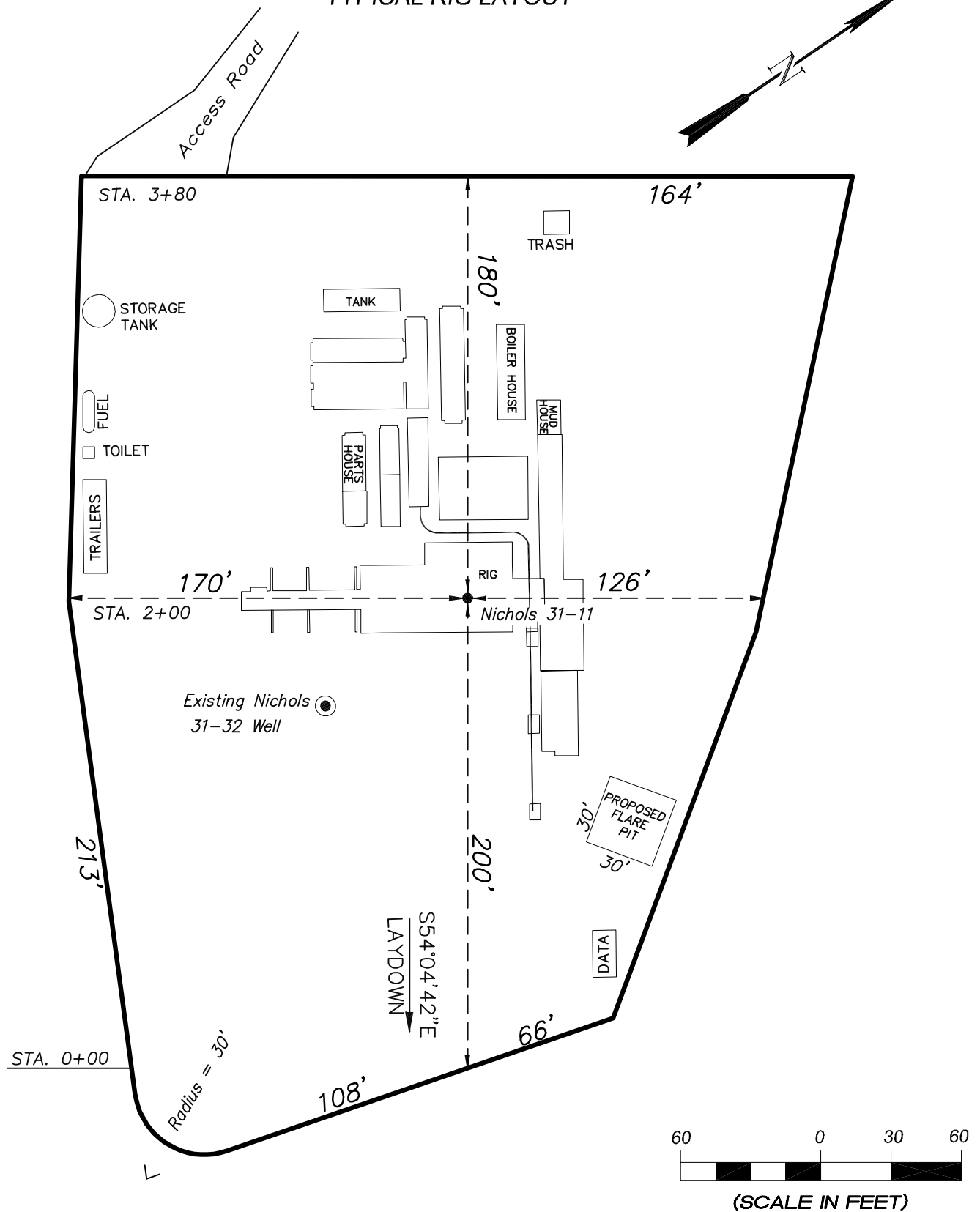


906 Main Street
Evanston, Wyoming 82930
Phone No. (307) 789-4545

EnCana Oil & Gas (USA) Inc.

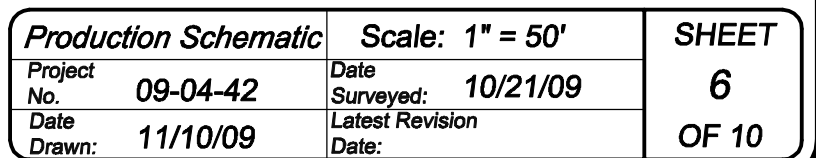
Well Pad PL31SW

TYPICAL RIG LAYOUT



Rig Layout		Scale: 1" = 60'	SHEET
Project No.	09-04-42	Date Surveyed:	10/21/09
Date	11/10/09	Latest Revision	
Drawn:		Date:	
			5
			OF 10

A diagram of a double-headed arrow pointing left and right. In the center of the arrow, there is a symbol consisting of two parallel, slightly curved lines with arrowheads at both ends, representing a double-headed arrow or a range.

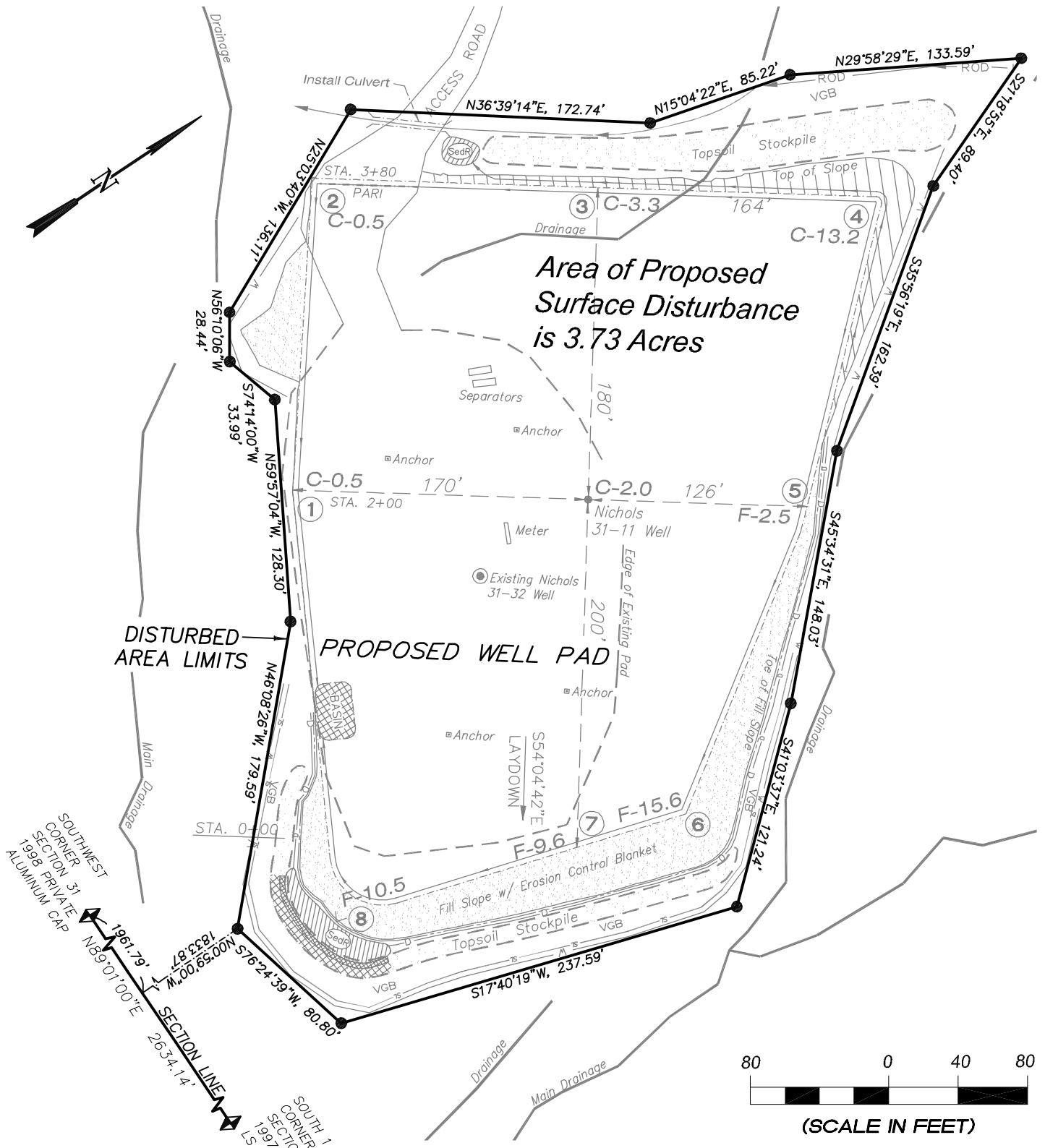


EnCana Oil & Gas (USA) Inc.

Well Pad PL31SW

Section 31, T9S, R95W, 6th P.M.

SURFACE DISTURBANCE AREA



Surface Disturbance		Scale: 1" = 80'	SHEET 7 OF 10
Project No.	09-04-42	Date Surveyed: 10/21/09	
Date Drawn:	11/10/09	Latest Revision Date:	